

Data Path : Z:\svoasrv\HPCHEM1\BNA\_G\Data\BG091324\  
 Data File : BG062838.D  
 Acq On : 15 Sep 2024 9:05  
 Operator : JU/RC  
 Sample : P3997-05  
 Misc :  
 ALS Vial : 26 Sample Multiplier: 1

Instrument :  
 BNA\_G  
 ClientSampleId :  
 COAX1

Integration Parameters: LSCINT.P

Integrator: RTE  
 Smoothing : OFF Filtering: 5  
 Sampling : 1 Min Area: 0.1 % of largest Peak  
 Start Thrs: 0.2 Max Peaks: 100  
 Stop Thrs : 0 Peak Location: TOP

If leading or trailing edge < 100 prefer < Baseline drop else tangent >  
 Peak separation: 5

Method : Z:\svoasrv\HPCHEM1\BNA\_G\Methods\SFAM-EPA-BG090924.MA.M  
 Title : SVOA CALIBRATION

Signal : TIC: BG062838.D\data.ms

peak #	R.T. min	first scan	max scan	last scan	PK TY	peak height	corr. area	corr. % max.	% of total
1	3.360	42	46	51	rVB	9924	15277	0.62%	0.084%
2	3.430	57	58	63	rVB5	2387	2574	0.10%	0.014%
3	3.771	111	116	126	rBV	44931	75979	3.06%	0.417%
4	4.106	169	173	177	rBV3	3297	4206	0.17%	0.023%
5	6.879	640	645	650	rBV2	3816	5242	0.21%	0.029%
6	7.020	662	669	671	rBV2	3137	5427	0.22%	0.030%
7	7.067	671	677	685	rVB	57242	100953	4.07%	0.554%
8	7.232	699	705	716	rBB	142592	238985	9.64%	1.312%
9	7.432	732	739	751	rBV	173132	301963	12.18%	1.658%
10	7.902	812	819	826	rBV	149100	259775	10.48%	1.427%
11	7.960	826	829	835	rVB4	6846	9599	0.39%	0.053%
12	8.601	932	938	947	rBV	173555	294251	11.87%	1.616%
13	8.718	954	958	963	rVB2	3124	5403	0.22%	0.030%
14	9.053	1008	1015	1025	rBV	212123	358973	14.48%	1.971%
15	9.776	1130	1138	1149	rVB	169552	299445	12.08%	1.644%
16	10.317	1223	1230	1241	rBV	269392	465444	18.77%	2.556%
17	10.693	1286	1294	1302	rBV	218822	389733	15.72%	2.140%
18	10.822	1310	1316	1328	rBV	214340	387738	15.64%	2.129%
19	11.221	1381	1384	1388	rBV2	4044	4854	0.20%	0.027%
20	11.280	1388	1394	1399	rVV2	4121	6898	0.28%	0.038%
21	11.345	1402	1405	1407	rVB2	2064	2592	0.10%	0.014%
22	11.433	1414	1420	1424	rBV2	3475	4946	0.20%	0.027%
23	11.750	1468	1474	1480	rVB3	4259	6993	0.28%	0.038%
24	12.173	1542	1546	1552	rVB2	1894	2862	0.12%	0.016%
25	12.273	1560	1563	1570	rVB3	3763	6468	0.26%	0.036%
26	13.930	1838	1845	1853	rBV	564989	826906	33.35%	4.541%
27	14.224	1887	1895	1903	rBV	606535	969104	39.08%	5.322%
28	14.529	1940	1947	1953	rBV	447259	672870	27.13%	3.695%
29	14.729	1974	1981	1993	rBV	60058	107305	4.33%	0.589%
30	15.522	2107	2116	2124	rBV	926544	1382041	55.73%	7.590%
31	15.640	2129	2136	2147	rBV	288920	446232	18.00%	2.451%
32	15.757	2154	2156	2160	rVB3	2479	3257	0.13%	0.018%
33	16.274	2240	2244	2246	rBV2	2016	2899	0.12%	0.016%
34	16.357	2255	2258	2262	rBV2	5612	7205	0.29%	0.040%
35	16.415	2264	2268	2274	rVB5	7117	12691	0.51%	0.070%
36	16.480	2274	2279	2283	rBV3	7853	9477	0.38%	0.052%

Data Path : Z:\svoasrv\HPCHEM1\BNA\_G\Data\BG091324\  
 Data File : BG062838.D  
 Acq On : 15 Sep 2024 9:05  
 Operator : JU/RC  
 Sample : P3997-05  
 Misc :  
 ALS Vial : 26 Sample Multiplier: 1

Instrument :  
 BNA\_G  
 ClientSampleId :  
 COAX1

Integration Parameters: LSCINT.P

Integrator: RTE  
 Smoothing : OFF Filtering: 5  
 Sampling : 1 Min Area: 0.1 % of largest Peak  
 Start Thrs: 0.2 Max Peaks: 100  
 Stop Thrs : 0 Peak Location: TOP

If leading or trailing edge < 100 prefer < Baseline drop else tangent >  
 Peak separation: 5

Method : Z:\svoasrv\HPCHEM1\BNA\_G\Methods\SFAM-EPA-BG090924.MA.M  
 Title : SVOA CALIBRATION

37	16.521	2283	2286	2289	rVB2	3655	3605	0.15%	0.020%
38	16.674	2308	2312	2318	rBV2	3359	5906	0.24%	0.032%
39	16.744	2318	2324	2327	rBV3	5893	8391	0.34%	0.046%
40	16.815	2334	2336	2341	rVB3	2481	3650	0.15%	0.020%
41	17.273	2407	2414	2422	rBV	694885	1002754	40.44%	5.507%
42	17.373	2424	2431	2442	rVV	1219009	1783768	71.93%	9.796%
43	17.661	2475	2480	2485	rVB2	1381	2934	0.12%	0.016%
44	18.066	2543	2549	2552	rBV4	2627	4182	0.17%	0.023%
45	18.160	2563	2565	2569	rBV4	2345	3609	0.15%	0.020%
46	18.507	2620	2624	2631	rBV3	2241	3972	0.16%	0.022%
47	19.224	2741	2746	2751	rBV	17206	24702	1.00%	0.136%
48	19.300	2754	2759	2763	rVV2	16626	22855	0.92%	0.126%
49	19.594	2805	2809	2811	rBV2	5440	6556	0.26%	0.036%
50	19.664	2814	2821	2828	rBV	1663963	2332356	94.06%	12.809%
51	19.952	2864	2870	2873	rVV5	3653	6281	0.25%	0.034%
52	20.129	2897	2900	2902	rBV3	3591	3146	0.13%	0.017%
53	20.422	2948	2950	2955	rBV6	2089	2600	0.10%	0.014%
54	20.634	2981	2986	2988	rBV6	5045	5503	0.22%	0.030%
55	20.681	2992	2994	2996	rBV3	3415	3334	0.13%	0.018%
56	20.892	3026	3030	3032	rBV4	2755	4248	0.17%	0.023%
57	20.939	3036	3038	3040	rBV2	2583	3391	0.14%	0.019%
58	21.004	3047	3049	3050	rBV2	3442	2582	0.10%	0.014%
59	21.186	3078	3080	3084	rVB4	4273	4642	0.19%	0.025%
60	21.274	3093	3095	3100	rBV5	3724	4371	0.18%	0.024%
61	21.415	3117	3119	3122	rBV3	3141	2917	0.12%	0.016%
62	21.521	3129	3137	3145	rBV2	811574	1297911	52.34%	7.128%
63	21.744	3174	3175	3178	rVB3	4460	2943	0.12%	0.016%
64	22.643	3325	3328	3335	rVB6	16233	28692	1.16%	0.158%
65	22.943	3376	3379	3380	rBV3	6789	6346	0.26%	0.035%
66	23.513	3474	3476	3478	rBV3	4768	2524	0.10%	0.014%
67	23.707	3505	3509	3514	rVB4	10054	19380	0.78%	0.106%
68	23.836	3529	3531	3532	rBV2	3799	3056	0.12%	0.017%
69	24.183	3588	3590	3592	rBV3	4312	3794	0.15%	0.021%
70	24.259	3602	3603	3605	rBV2	3851	2913	0.12%	0.016%
71	24.377	3611	3623	3637	rBV	953631	2479733	100.00%	13.618%
72	24.582	3647	3658	3671	rVB	515194	1384268	55.82%	7.602%
73	24.970	3722	3724	3725	rBV2	3088	2539	0.10%	0.014%
74	25.793	3862	3864	3865	rBV2	3603	2566	0.10%	0.014%
75	26.921	4053	4056	4057	rBV3	6835	5976	0.24%	0.033%
76	27.914	4223	4225	4227	rBV3	3743	2517	0.10%	0.014%

Data Path : Z:\svoasrv\HPCHEM1\BNA\_G\Data\BG091324\  
Data File : BG062838.D  
Acq On : 15 Sep 2024 9:05  
Operator : JU/RC  
Sample : P3997-05  
Misc :  
ALS Vial : 26 Sample Multiplier: 1

Instrument :  
BNA\_G  
ClientSampleId :  
C0AX1

Integration Parameters: LSCINT.P  
Integrator: RTE  
Smoothing : OFF Filtering: 5  
Sampling : 1 Min Area: 0.1 % of largest Peak  
Start Thrs: 0.2 Max Peaks: 100  
Stop Thrs : 0 Peak Location: TOP

If leading or trailing edge < 100 prefer < Baseline drop else tangent >  
Peak separation: 5

Method : Z:\svoasrv\HPCHEM1\BNA\_G\Methods\SFAM-EPA-BG090924.MA.M  
Title : SVOA CALIBRATION

77	28.554	4332	4334	4336	rVB3	4975	3842	0.15%	0.021%
78	28.907	4392	4394	4395	rBV2	3447	2526	0.10%	0.014%
79	30.904	4732	4734	4735	rBV2	3850	2742	0.11%	0.015%
80	30.998	4748	4750	4752	rBV3	3329	3573	0.14%	0.020%
81	31.157	4776	4777	4779	rBV2	3902	2569	0.10%	0.014%

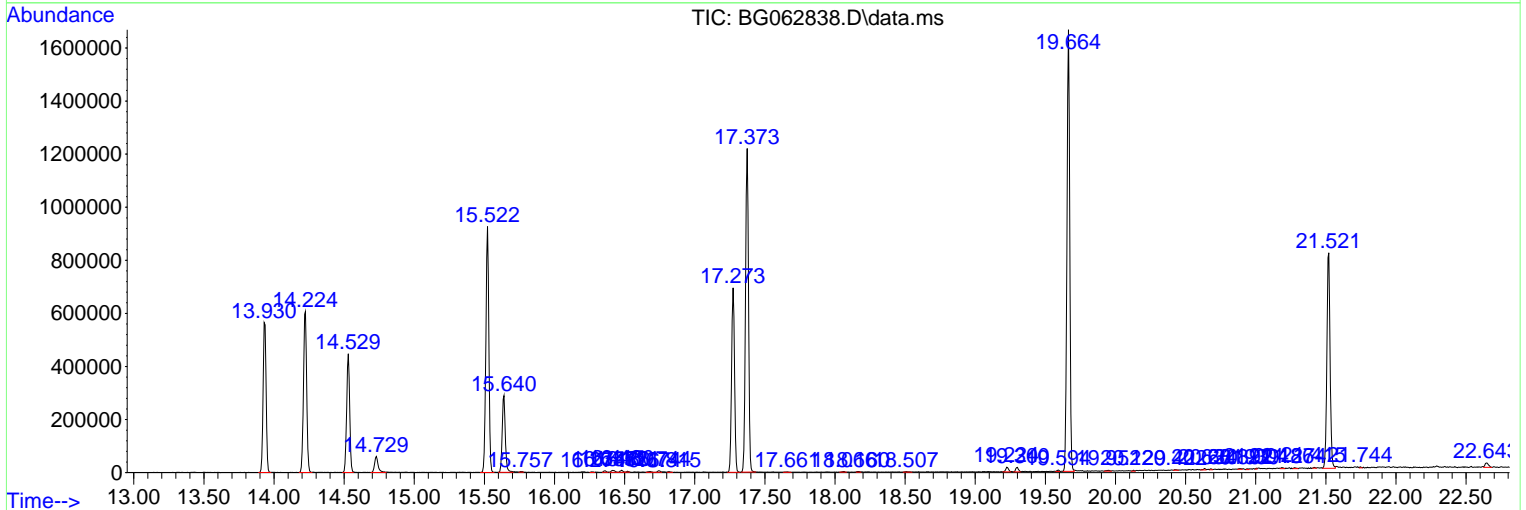
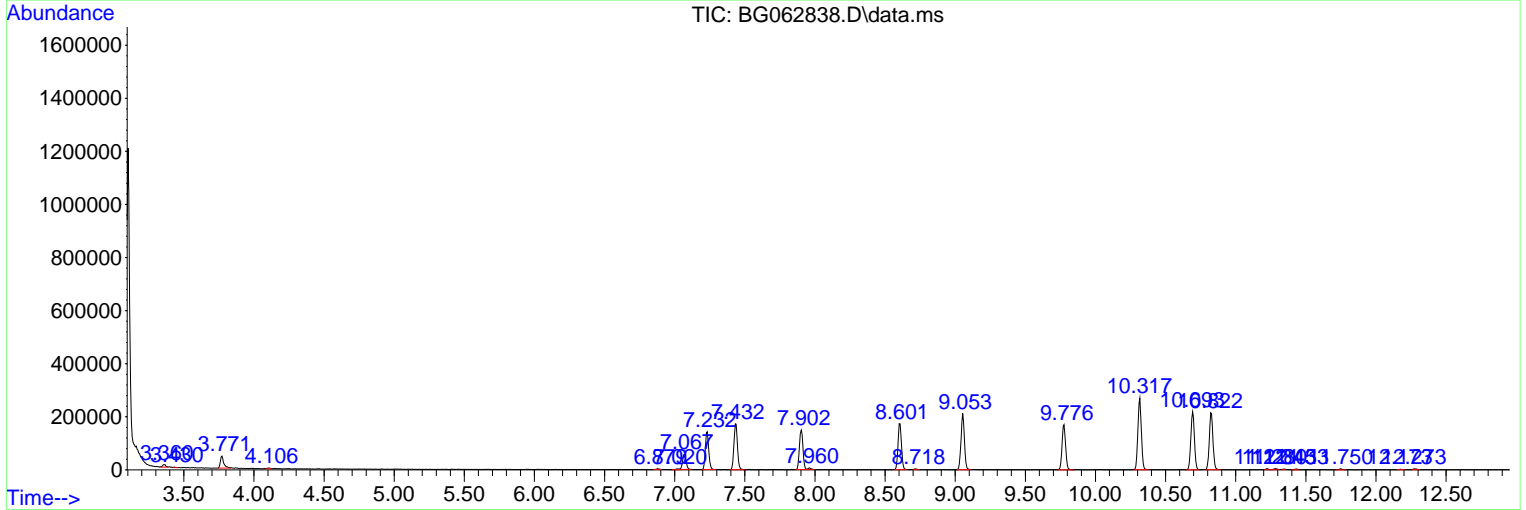
Sum of corrected areas: 18209232

Data Path : Z:\svoasrv\HPCHEM1\BNA\_G\Data\BG091324\  
 Data File : BG062838.D  
 Acq On : 15 Sep 2024 9:05  
 Operator : JU/RC  
 Sample : P3997-05  
 Misc :  
 ALS Vial : 26 Sample Multiplier: 1

Instrument :  
 BNA\_G  
 ClientSampleId :  
 C0AX1

Quant Method : Z:\svoasrv\HPCHEM1\BNA\_G\Methods\SFAM-EPA-BG090924.MA.M  
 Quant Title : SVOA CALIBRATION

TIC Library : C:\DATABASE\NIST20.L  
 TIC Integration Parameters: LSCINT.P



Library Search Compound Report

Data Path : Z:\svoasrv\HPCHEM1\BNA\_G\Data\BG091324\  
Data File : BG062838.D  
Acq On : 15 Sep 2024 9:05  
Operator : JU/RC  
Sample : P3997-05  
Misc :  
ALS Vial : 26 Sample Multiplier: 1

Instrument :  
BNA\_G  
ClientSampleId :  
C0AX1

Quant Method : Z:\svoasrv\HPCHEM1\BNA\_G\Methods\SFAM-EPA-BG090924.MA.M  
Quant Title : SVOA CALIBRATION

TIC Library : C:\DATABASE\NIST20.L  
TIC Integration Parameters: LSCINT.P

No Library Search Compounds Detected

\*\*\*\*\*

Data Path : Z:\svoasrv\HPCHEM1\BNA\_G\Data\BG091324\  
Data File : BG062838.D  
Acq On : 15 Sep 2024 9:05  
Operator : JU/RC  
Sample : P3997-05  
Misc :  
ALS Vial : 26 Sample Multiplier: 1

Instrument :  
BNA\_G  
ClientSampleId :  
C0AX1

Quant Method : Z:\svoasrv\HPCHEM1\BNA\_G\Methods\SFAM-EPA-BG090924.MA.M  
Quant Title : SVOA CALIBRATION

TIC Library : C:\DATABASE\NIST20.L  
TIC Integration Parameters: LSCINT.P

TIC Top Hit name	RT	EstConc	Units	Response	--Internal Standard--			
					#	RT	Resp	Conc

---