

Data Path : Z:\svoasrv\HPCHEM1\BNA_G\Data\BG091324\
 Data File : BG062851.D
 Acq On : 15 Sep 2024 18:13
 Operator : JU/RC
 Sample : P3952-21
 Misc :
 ALS Vial : 40 Sample Multiplier: 1

Instrument :
 BNA_G
 ClientSampleId :
 COB46

Integration Parameters: LSCINT.P

Integrator: RTE
 Smoothing : OFF Filtering: 5
 Sampling : 1 Min Area: 0.1 % of largest Peak
 Start Thrs: 0.2 Max Peaks: 100
 Stop Thrs : 0 Peak Location: TOP

If leading or trailing edge < 100 prefer < Baseline drop else tangent >
 Peak separation: 5

Method : Z:\svoasrv\HPCHEM1\BNA_G\Methods\SFAM-EPA-BG090924.MA.M
 Title : SVOA CALIBRATION

Signal : TIC: BG062851.D\data.ms

peak #	R.T. min	first scan	max scan	last scan	PK TY	peak height	corr. area	corr. % max.	% of total
1	3.334	37	42	44	rBV4	10986	16656	0.77%	0.101%
2	3.358	44	46	59	rVB4	11372	23004	1.06%	0.139%
3	3.769	112	116	125	rBV	44516	75998	3.50%	0.460%
4	4.098	168	172	177	rVB5	2345	3821	0.18%	0.023%
5	4.539	243	247	252	rBV5	2857	5520	0.25%	0.033%
6	4.633	258	263	269	rVB4	12790	21353	0.98%	0.129%
7	7.065	672	677	684	rBV	45818	76970	3.54%	0.466%
8	7.230	699	705	715	rBV	127797	209695	9.65%	1.270%
9	7.435	732	740	749	rVB2	155067	262829	12.10%	1.592%
10	7.900	813	819	826	rBV	132447	225491	10.38%	1.366%
11	8.605	932	939	947	rBV	143471	237001	10.91%	1.436%
12	9.051	1008	1015	1024	rBV	176497	310148	14.28%	1.879%
13	9.492	1084	1090	1092	rVB3	1762	2275	0.10%	0.014%
14	9.774	1130	1138	1150	rBV	154083	271504	12.50%	1.645%
15	10.314	1222	1230	1240	rBV	253967	444318	20.45%	2.691%
16	10.690	1287	1294	1302	rVB	186710	328333	15.11%	1.989%
17	10.825	1308	1317	1332	rBV	163111	299156	13.77%	1.812%
18	12.277	1559	1564	1574	rBV2	3060	5714	0.26%	0.035%
19	13.934	1839	1846	1856	rBV	516254	738255	33.99%	4.472%
20	14.222	1887	1895	1902	rBV	567046	853536	39.29%	5.170%
21	14.527	1941	1947	1954	rVB	379922	561581	25.85%	3.402%
22	14.727	1976	1981	1993	rBV2	45477	79086	3.64%	0.479%
23	14.874	2001	2006	2011	rVB2	3472	5838	0.27%	0.035%
24	14.962	2013	2021	2032	rBV	285515	469944	21.63%	2.847%
25	15.520	2109	2116	2130	rBV	797841	1194473	54.99%	7.235%
26	15.638	2130	2136	2147	rVV	272632	403084	18.56%	2.442%
27	15.767	2155	2158	2162	rVB2	3282	3676	0.17%	0.022%
28	15.884	2172	2178	2187	rBV	101590	148135	6.82%	0.897%
29	16.025	2196	2202	2206	rBV2	2122	2895	0.13%	0.018%
30	16.448	2266	2274	2282	rBV	24630	37685	1.73%	0.228%
31	17.271	2408	2414	2424	rBV	533373	814241	37.48%	4.932%
32	17.371	2424	2431	2442	rBV	1029635	1516021	69.79%	9.183%
33	17.553	2459	2462	2466	rVB3	2371	2732	0.13%	0.017%
34	18.164	2561	2566	2572	rBV3	25139	37671	1.73%	0.228%
35	18.234	2576	2578	2581	rVV4	2820	3008	0.14%	0.018%
36	18.469	2613	2618	2622	rBV6	5687	9585	0.44%	0.058%

Data Path : Z:\svoasrv\HPCHEM1\BNA_G\Data\BG091324\
 Data File : BG062851.D
 Acq On : 15 Sep 2024 18:13
 Operator : JU/RC
 Sample : P3952-21
 Misc :
 ALS Vial : 40 Sample Multiplier: 1

Instrument :
 BNA_G
 ClientSampleId :
 COB46

Integration Parameters: LSCINT.P

Integrator: RTE
 Smoothing : OFF Filtering: 5
 Sampling : 1 Min Area: 0.1 % of largest Peak
 Start Thrs: 0.2 Max Peaks: 100
 Stop Thrs : 0 Peak Location: TOP

If leading or trailing edge < 100 prefer < Baseline drop else tangent >
 Peak separation: 5

Method : Z:\svoasrv\HPCHEM1\BNA_G\Methods\SFAM-EPA-BG090924.MA.M
 Title : SVOA CALIBRATION

37	18.652	2646	2649	2655	rVB4	3625	5846	0.27%	0.035%
38	18.757	2660	2667	2668	rVV4	1695	3063	0.14%	0.019%
39	18.881	2685	2688	2693	rBV6	2699	5167	0.24%	0.031%
40	19.016	2706	2711	2715	rBV3	12773	19484	0.90%	0.118%
41	19.098	2722	2725	2728	rBV3	2132	2601	0.12%	0.016%
42	19.227	2743	2747	2751	rBV2	17398	23899	1.10%	0.145%
43	19.298	2754	2759	2766	rBV2	17217	25948	1.19%	0.157%
44	19.351	2766	2768	2770	rBV3	3196	2273	0.10%	0.014%
45	19.439	2780	2783	2789	rBV7	6969	10184	0.47%	0.062%
46	19.586	2804	2808	2812	rBV6	6114	9205	0.42%	0.056%
47	19.662	2815	2821	2831	rVV	1435747	2035145	93.69%	12.327%
48	19.897	2857	2861	2866	rVB5	3357	4838	0.22%	0.029%
49	20.079	2891	2892	2895	rVB3	3810	2618	0.12%	0.016%
50	20.303	2928	2930	2933	rVV4	3117	3114	0.14%	0.019%
51	20.344	2935	2937	2938	rBV2	3772	2226	0.10%	0.013%
52	20.549	2971	2972	2974	rBV2	3636	2436	0.11%	0.015%
53	20.632	2984	2986	2991	rVB4	7580	9103	0.42%	0.055%
54	20.890	3028	3030	3033	rBV4	4847	5387	0.25%	0.033%
55	20.961	3041	3042	3044	rBV2	3231	2412	0.11%	0.015%
56	21.096	3063	3065	3067	rVB3	4277	3027	0.14%	0.018%
57	21.190	3077	3081	3088	rBV8	19379	45680	2.10%	0.277%
58	21.260	3091	3093	3095	rVB3	4067	3038	0.14%	0.018%
59	21.519	3130	3137	3146	rBV2	675101	1049777	48.33%	6.359%
60	22.001	3216	3219	3220	rBV3	10674	11519	0.53%	0.070%
61	22.400	3286	3287	3288	rBV	4100	2442	0.11%	0.015%
62	22.870	3366	3367	3369	rBV2	4268	3735	0.17%	0.023%
63	22.952	3377	3381	3388	rVB9	8324	16231	0.75%	0.098%
64	23.135	3407	3412	3417	rVB6	11169	20454	0.94%	0.124%
65	23.705	3505	3509	3511	rBV5	9866	14045	0.65%	0.085%
66	23.893	3536	3541	3546	rBV7	12049	27336	1.26%	0.166%
67	24.374	3612	3623	3637	rBV	828571	2172241	100.00%	13.158%
68	24.580	3649	3658	3672	rVB	424925	1154669	53.16%	6.994%
69	25.661	3836	3842	3849	rVB9	13302	34606	1.59%	0.210%
70	25.761	3858	3859	3861	rBV2	4833	4400	0.20%	0.027%
71	26.049	3906	3908	3911	rBV3	4348	4496	0.21%	0.027%
72	26.202	3932	3934	3937	rBV4	4642	2933	0.14%	0.018%
73	26.777	4026	4032	4034	rBV7	10383	20709	0.95%	0.125%
74	27.541	4160	4162	4165	rBV4	3762	3344	0.15%	0.020%
75	27.576	4167	4168	4171	rBV3	3807	4298	0.20%	0.026%
76	28.352	4298	4300	4302	rBV3	3201	3441	0.16%	0.021%

Data Path : Z:\svoasrv\HPCHEM1\BNA_G\Data\BG091324\
Data File : BG062851.D
Acq On : 15 Sep 2024 18:13
Operator : JU/RC
Sample : P3952-21
Misc :
ALS Vial : 40 Sample Multiplier: 1

Instrument :
BNA_G
ClientSampleId :
C0B46

Integration Parameters: LSCINT.P
Integrator: RTE
Smoothing : OFF Filtering: 5
Sampling : 1 Min Area: 0.1 % of largest Peak
Start Thrs: 0.2 Max Peaks: 100
Stop Thrs : 0 Peak Location: TOP

If leading or trailing edge < 100 prefer < Baseline drop else tangent >
Peak separation: 5

Method : Z:\svoasrv\HPCHEM1\BNA_G\Methods\SFAM-EPA-BG090924.MA.M
Title : SVOA CALIBRATION

77	28.440	4311	4315	4319	rBV7	6685	12549	0.58%	0.076%
78	28.622	4345	4346	4348	rBV2	3200	2842	0.13%	0.017%
79	29.039	4416	4417	4420	rBV2	3806	3199	0.15%	0.019%
80	31.096	4766	4767	4770	rBV3	3434	3754	0.17%	0.023%
81	31.678	4864	4866	4870	rVV5	4793	3627	0.17%	0.022%
82	31.725	4872	4874	4877	rVB3	4806	4804	0.22%	0.029%

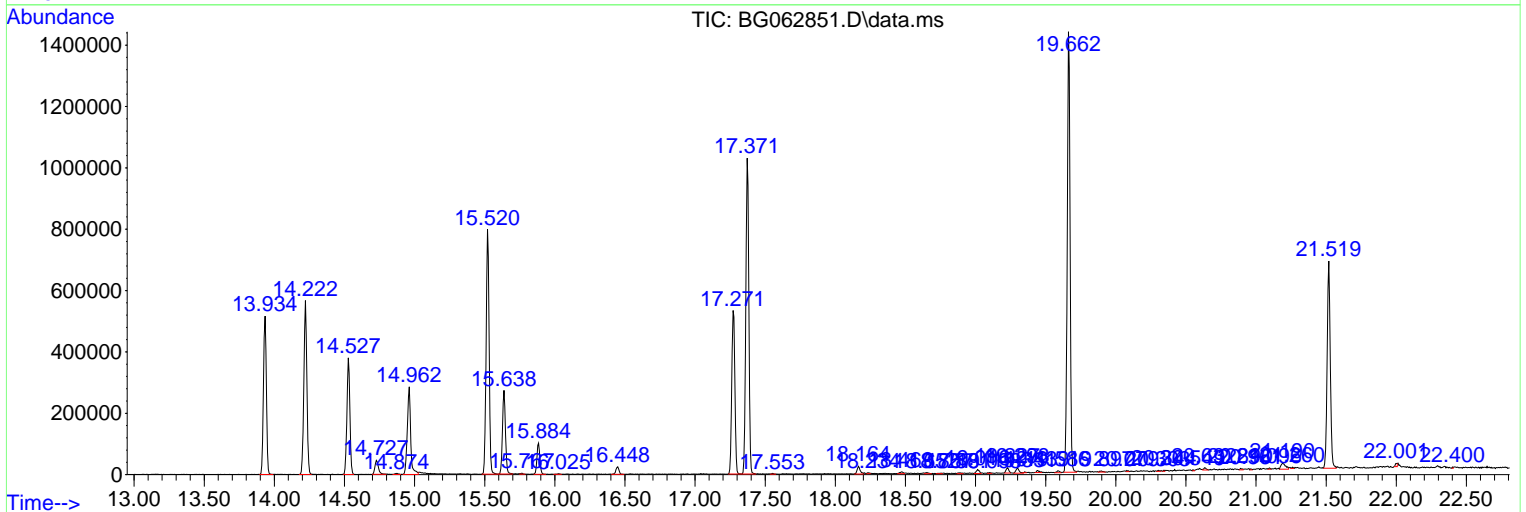
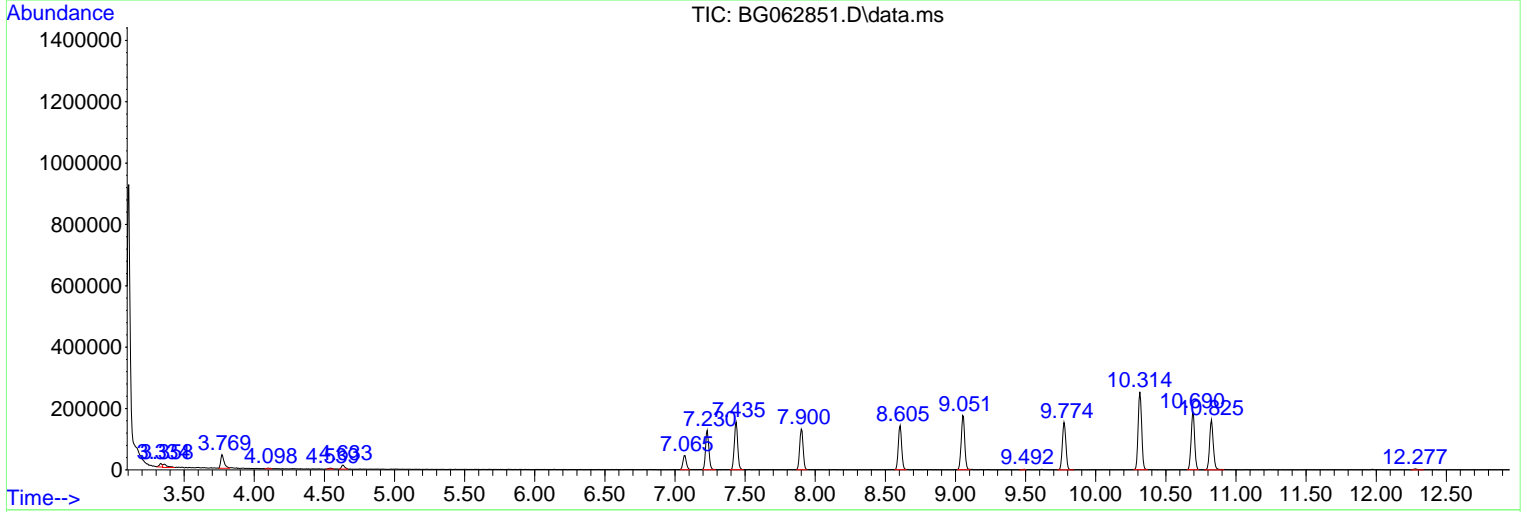
Sum of corrected areas: 16509377

Data Path : Z:\svoasrv\HPCHEM1\BNA_G\Data\BG091324\
 Data File : BG062851.D
 Acq On : 15 Sep 2024 18:13
 Operator : JU/RC
 Sample : P3952-21
 Misc :
 ALS Vial : 40 Sample Multiplier: 1

Instrument :
 BNA_G
 ClientSampleId :
 C0B46

Quant Method : Z:\svoasrv\HPCHEM1\BNA_G\Methods\SFAM-EPA-BG090924.MA.M
 Quant Title : SVOA CALIBRATION

TIC Library : C:\DATABASE\NIST20.L
 TIC Integration Parameters: LSCINT.P



Data Path : Z:\svoasrv\HPCHEM1\BNA_G\Data\BG091324\
 Data File : BG062851.D
 Acq On : 15 Sep 2024 18:13
 Operator : JU/RC
 Sample : P3952-21
 Misc :
 ALS Vial : 40 Sample Multiplier: 1

Instrument :
 BNA_G
 ClientSampleId :
 C0B46

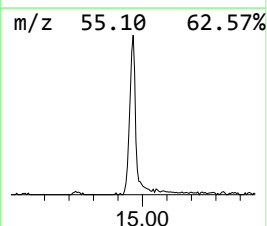
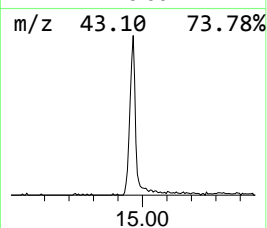
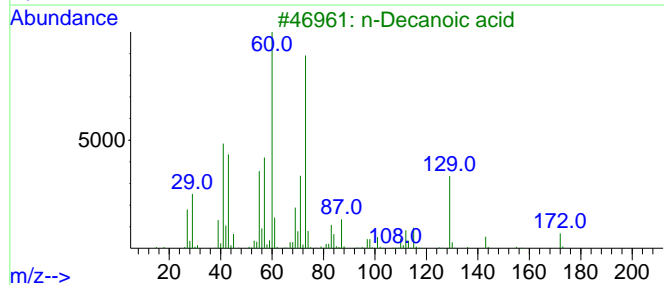
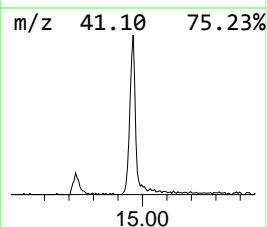
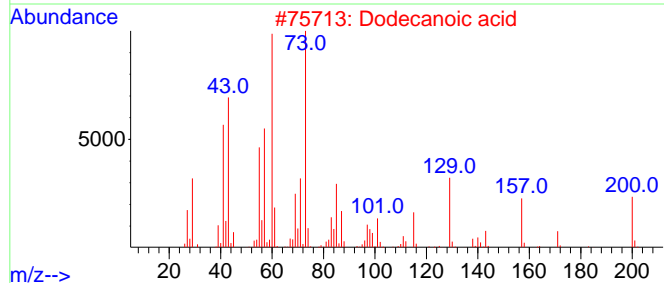
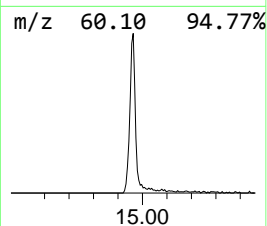
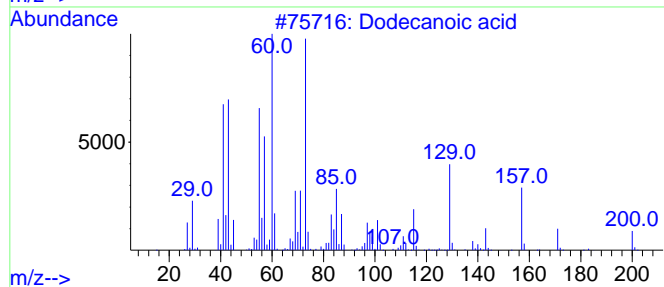
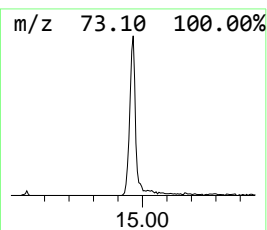
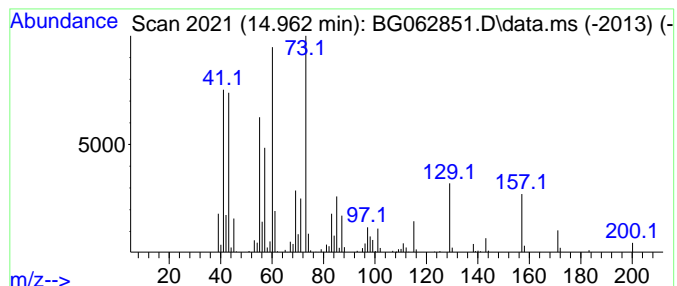
Quant Method : Z:\svoasrv\HPCHEM1\BNA_G\Methods\SFAM-EPA-BG090924.MA.M
 Quant Title : SVOA CALIBRATION

TIC Library : C:\DATABASE\NIST20.L
 TIC Integration Parameters: LSCINT.P

 Peak Number 1 Dodecanoic acid Concentration Rank 1

R.T.	EstConc	Area	Relative to ISTD	R.T.
14.962	16.74 ng/ul	469944	Acenaphthene-d10	14.527

Hit#	of	5	Tentative ID	MW	MolForm	CAS#	Qual
1			Dodecanoic acid	200	C12H24O2	000143-07-7	98
2			Dodecanoic acid	200	C12H24O2	000143-07-7	91
3			n-Decanoic acid	172	C10H20O2	000334-48-5	76
4			n-Decanoic acid	172	C10H20O2	000334-48-5	76
5			Undecanoic acid	186	C11H22O2	000112-37-8	72



Data Path : Z:\svoasrv\HPCHEM1\BNA_G\Data\BG091324\
 Data File : BG062851.D
 Acq On : 15 Sep 2024 18:13
 Operator : JU/RC
 Sample : P3952-21
 Misc :
 ALS Vial : 40 Sample Multiplier: 1

Instrument :
 BNA_G
 ClientSampleId :
 C0B46

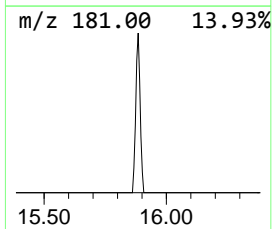
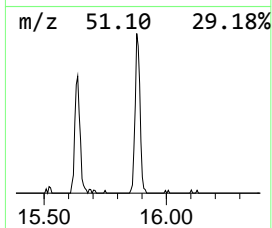
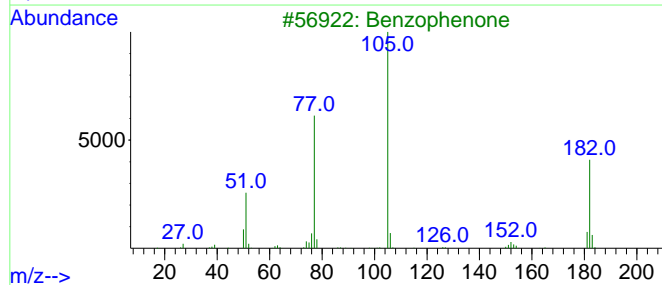
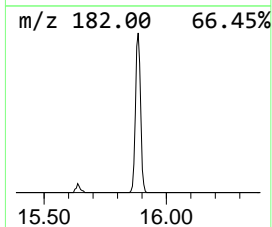
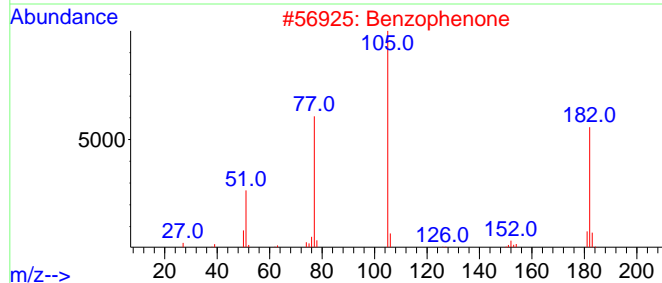
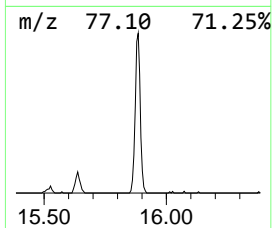
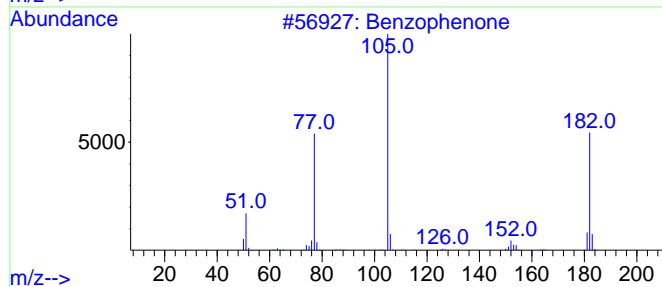
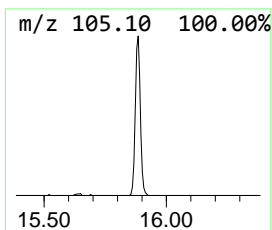
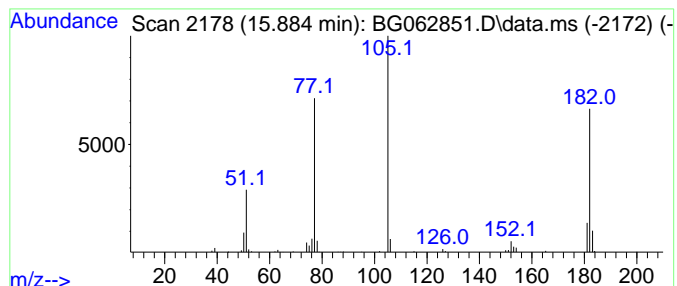
Quant Method : Z:\svoasrv\HPCHEM1\BNA_G\Methods\SFAM-EPA-BG090924.MA.M
 Quant Title : SVOA CALIBRATION

TIC Library : C:\DATABASE\NIST20.L
 TIC Integration Parameters: LSCINT.P

 Peak Number 2 Benzophenone Concentration Rank 2

R.T.	EstConc	Area	Relative to ISTD	R.T.
15.884	5.28 ng/ul	148135	Acenaphthene-d10	14.527

Hit#	of	5	Tentative ID	MW	MolForm	CAS#	Qual
1			Benzophenone	182	C13H10O	000119-61-9	97
2			Benzophenone	182	C13H10O	000119-61-9	96
3			Benzophenone	182	C13H10O	000119-61-9	93
4			Benzophenone	182	C13H10O	000119-61-9	91
5			Azobenzene	182	C12H10N2	000103-33-3	72



Data Path : Z:\svoasrv\HPCHEM1\BNA_G\Data\BG091324\
Data File : BG062851.D
Acq On : 15 Sep 2024 18:13
Operator : JU/RC
Sample : P3952-21
Misc :
ALS Vial : 40 Sample Multiplier: 1

Instrument :
BNA_G
ClientSampleId :
C0B46

Quant Method : Z:\svoasrv\HPCHEM1\BNA_G\Methods\SFAM-EPA-BG090924.MA.M
Quant Title : SVOA CALIBRATION

TIC Library : C:\DATABASE\NIST20.L
TIC Integration Parameters: LSCINT.P

TIC Top Hit name	RT	EstConc	Units	Response	--Internal Standard--			
					#	RT	Resp	Conc
Dodecanoic acid	14.962	16.7	ng/ul	469944	3	14.527	561581	20.0
Benzophenone	15.884	5.3	ng/ul	148135	3	14.527	561581	20.0