

Data Path : \\74.0.250.170\SVOASRV\HPCHEM1\BNA G\DATA\BG091417\
 Data File : BG028739.D
 Acq On : 14 Sep 2017 19:21
 Operator : SJ/JU
 Sample : I5216-06
 Misc :
 ALS Vial : 12 Sample Multiplier: 1

Instrument :
 BNA_G
 ClientSampleId :

Quant Time: Sep 15 07:51:20 2017
 Quant Method : Z:\HPCHEM1\BNA G\METHODS\8270-BG091217.M
 Quant Title : ASP BNA STANDARDS FOR 5 POINT CALIBRATION
 QLast Update : Tue Sep 12 16:57:11 2017
 Response via : Initial Calibration

Internal Standards	R.T.	QIon	Response	Conc	Units	Dev(Min)
1) 1,4-Dichlorobenzene-d4	8.33	152	22807	20.00	ng	0.00
21) Naphthalene-d8	11.15	136	88830	20.00	ng	0.00
38) Acenaphthene-d10	14.94	164	69444	20.00	ng	0.00
63) Phenanthrene-d10	17.69	188	235637	20.00	ng	0.00
75) Chrysene-d12	22.02	240	285439	20.00	ng	0.00
86) Perylene-d12	25.52	264	291078	20.00	ng	0.00
System Monitoring Compounds						
5) 2-Fluorophenol	5.90	112	185304	134.06	ng	0.00
7) Phenol-d6	7.48	99	211201	101.49	ng	0.00
23) Nitrobenzene-d5	9.50	82	180876	97.41	ng	0.00
41) 2,4,6-Tribromophenol	16.43	330	204550	178.09	ng	0.00
44) 2-Fluorobiphenyl	13.56	172	464521	89.19	ng	0.00
78) Terphenyl-d14	20.28	244	1242366	92.82	ng	0.00

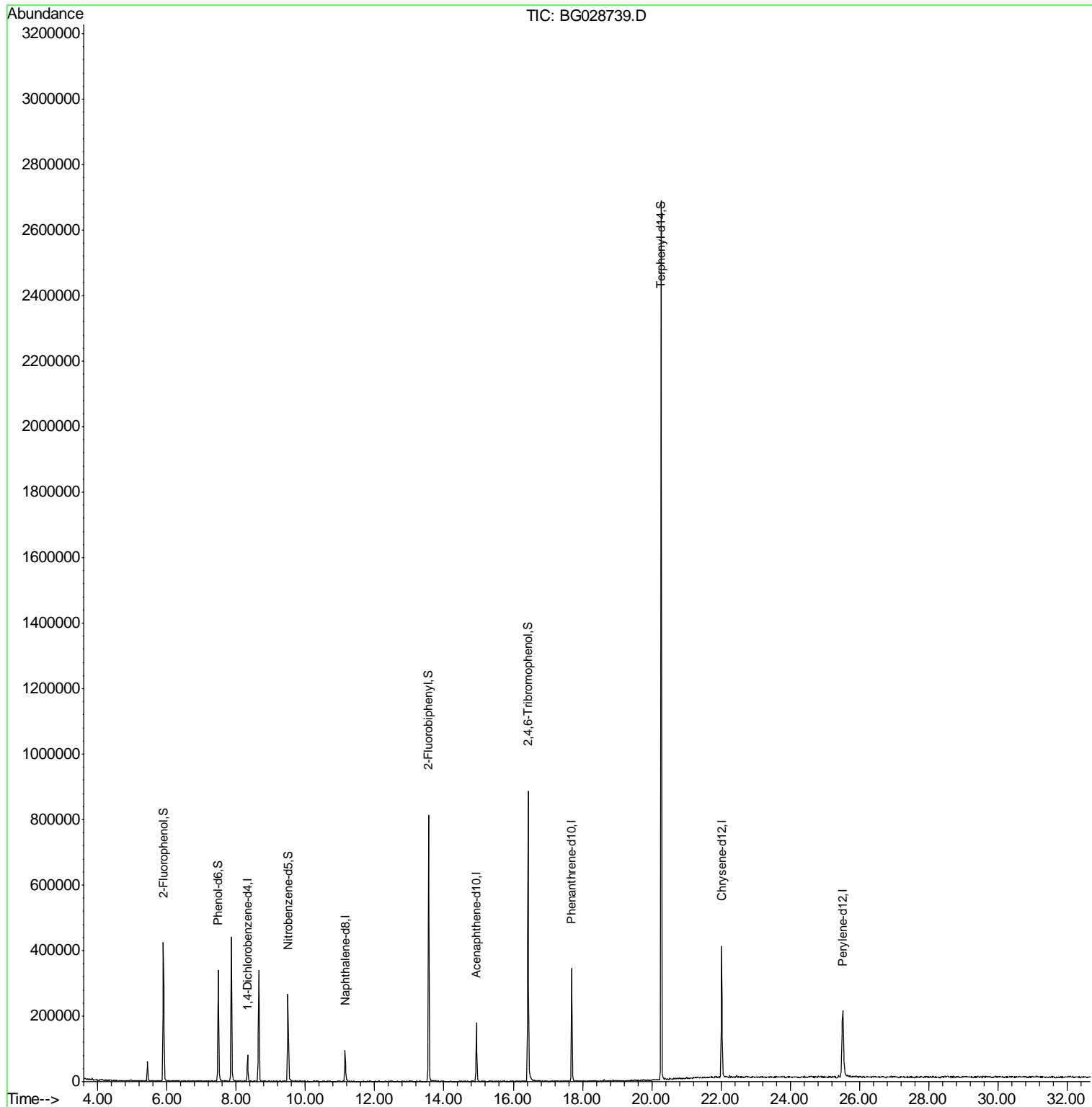
Target Compounds Qvalue

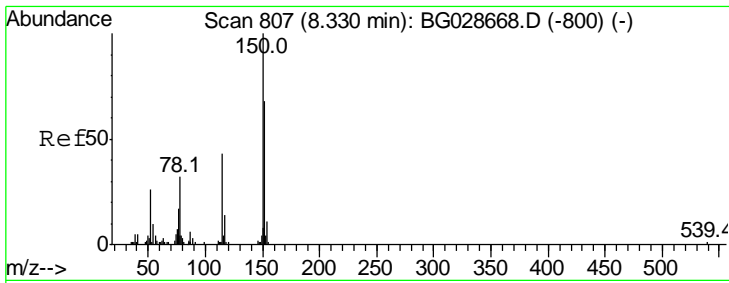
(#) = qualifier out of range (m) = manual integration (+) = signals summed

Data Path : \\74.0.250.170\SVOASRV\HPCHEM1\BNA G\DATA\BG091417\
 Data File : BG028739.D
 Acq On : 14 Sep 2017 19:21
 Operator : SJ/JU
 Sample : I5216-06
 Misc :
 ALS Vial : 12 Sample Multiplier: 1

Instrument :
 BNA_G
 ClientSampleId :

Quant Time: Sep 15 07:51:20 2017
 Quant Method : Z:\HPCHEM1\BNA G\METHODS\8270-BG091217.M
 Quant Title : ASP BNA STANDARDS FOR 5 POINT CALIBRATION
 QLast Update : Tue Sep 12 16:57:11 2017
 Response via : Initial Calibration

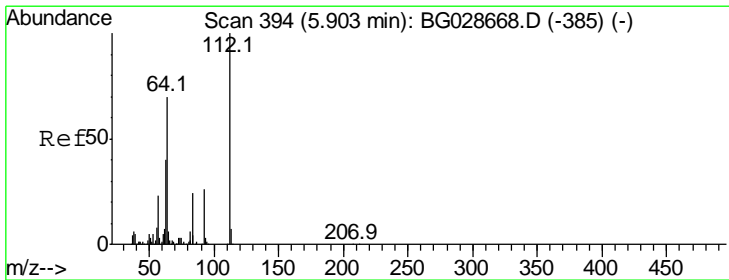
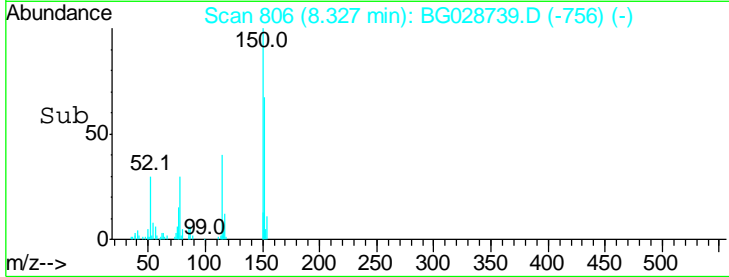
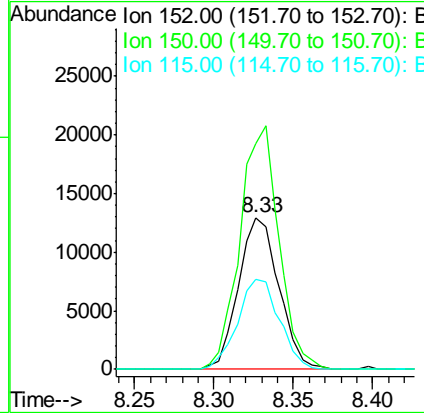
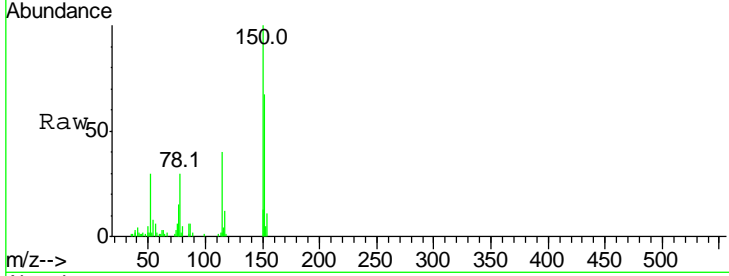




#1
 1,4-Dichlorobenzene-d4
 Concen: 20.000 ng
 RT: 8.33 min Scan# 806
 Delta R.T. -0.00 min
 Lab File: BG028739.D
 Acq: 14 Sep 2017 19:21

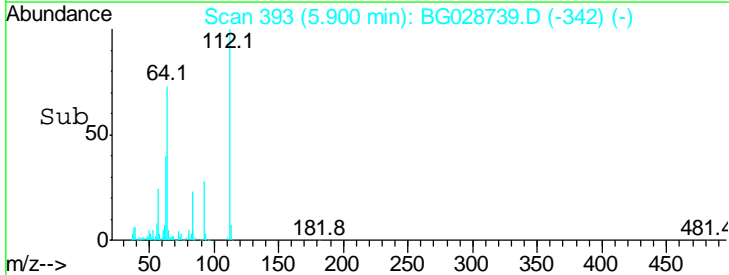
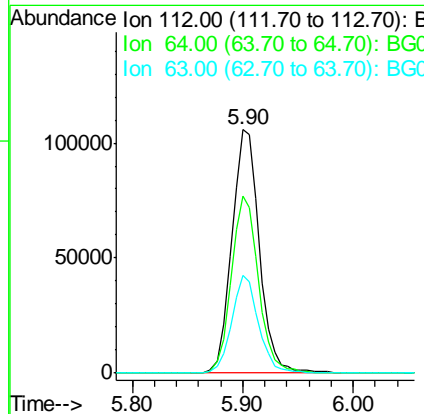
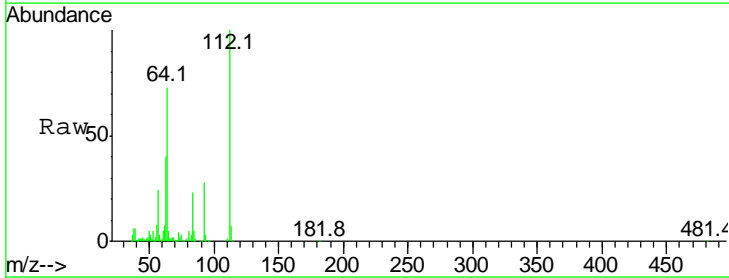
Instrument :
 BNA_G
 ClientSampled :

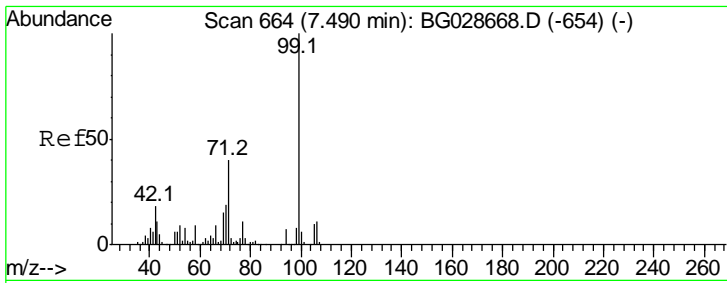
Tgt Ion	Resp	Lower	Upper
152	100		
150	148.4	114.0	171.0
115	59.3	48.1	72.1



#5
 2-Fluorophenol
 Concen: 134.064 ng
 RT: 5.90 min Scan# 393
 Delta R.T. -0.00 min
 Lab File: BG028739.D
 Acq: 14 Sep 2017 19:21

Tgt Ion	Resp	Lower	Upper
112	100		
64	72.8	61.8	92.6
63	40.4	37.2	55.8

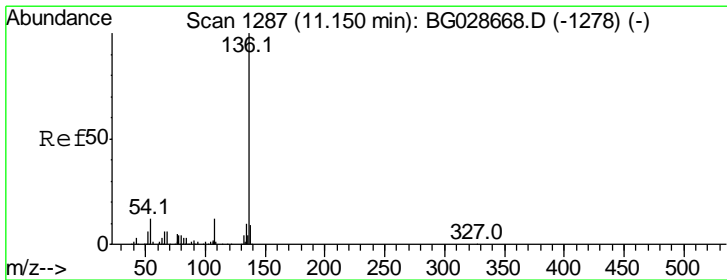
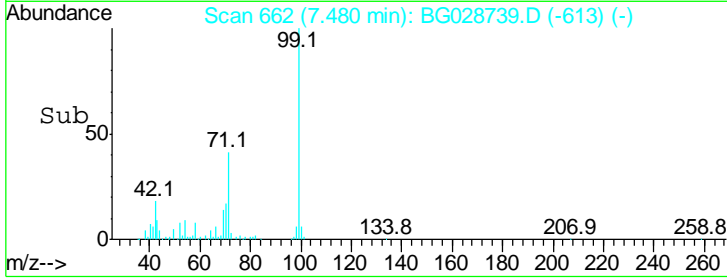
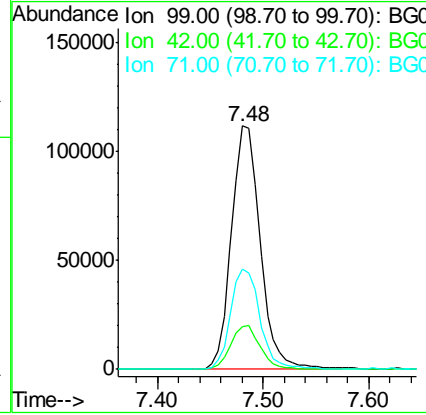
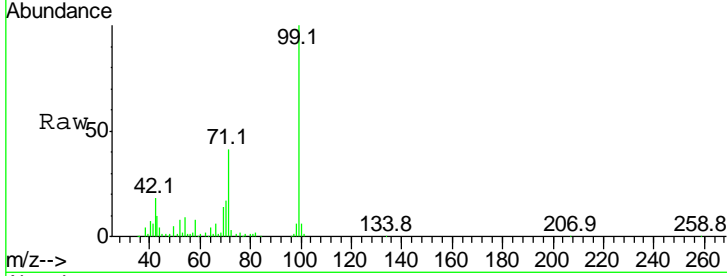




#7
 Phenol-d6
 Concen: 101.487 ng
 RT: 7.48 min Scan# 662
 Delta R.T. -0.01 min
 Lab File: BG028739.D
 Acq: 14 Sep 2017 19:21

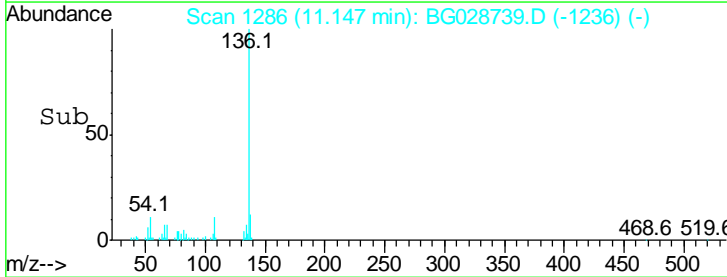
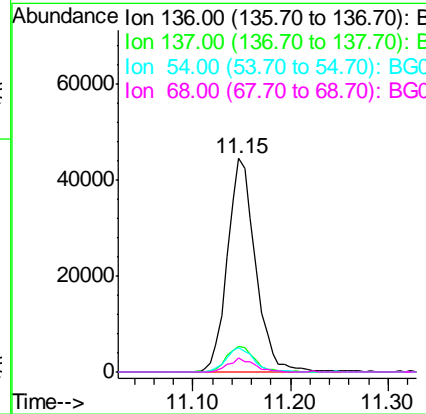
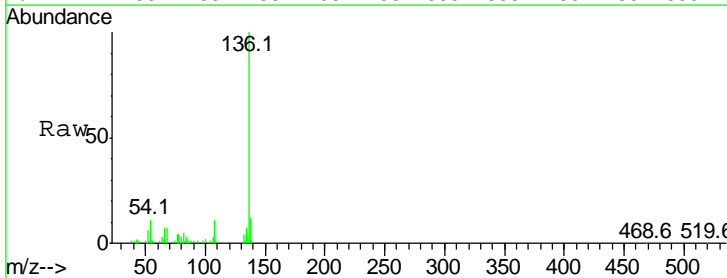
Instrument :
 BNA_G
 ClientSampled :

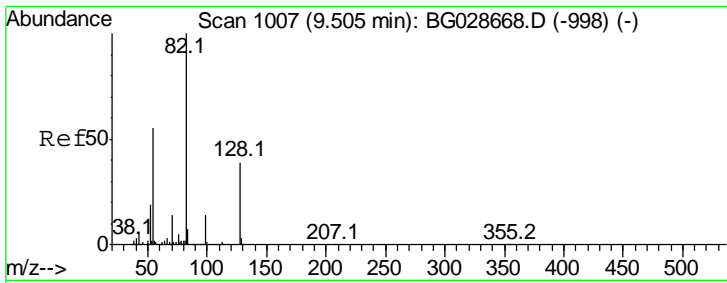
Tgt Ion	Resp	Lower	Upper
99	100		
42	17.7	20.5	30.7#
71	41.1	37.6	56.4



#21
 Naphthalene-d8
 Concen: 20.000 ng
 RT: 11.15 min Scan# 1286
 Delta R.T. -0.00 min
 Lab File: BG028739.D
 Acq: 14 Sep 2017 19:21

Tgt Ion	Resp	Lower	Upper
136	100		
137	11.9	8.9	13.3
54	11.5	9.3	13.9
68	6.7	5.1	7.7

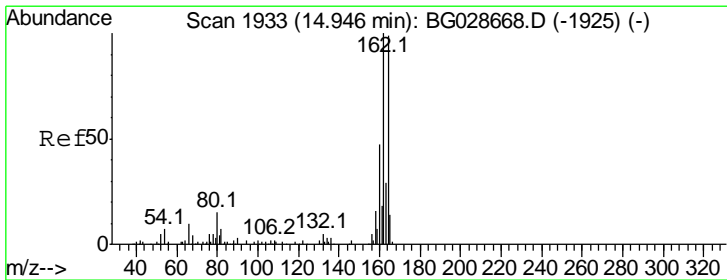
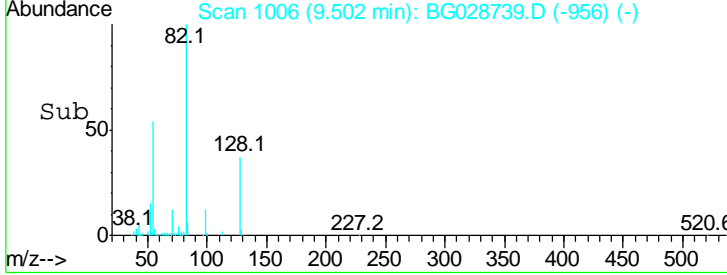
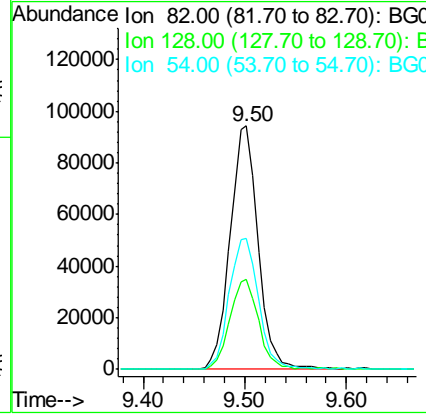
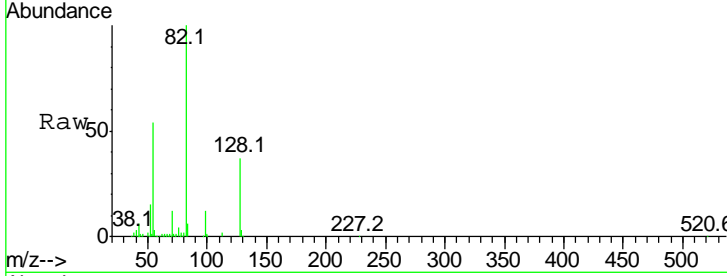




#23
 Nitrobenzene-d5
 Concen: 97.407 ng
 RT: 9.50 min Scan# 1006
 Delta R.T. -0.00 min
 Lab File: BG028739.D
 Acq: 14 Sep 2017 19:21

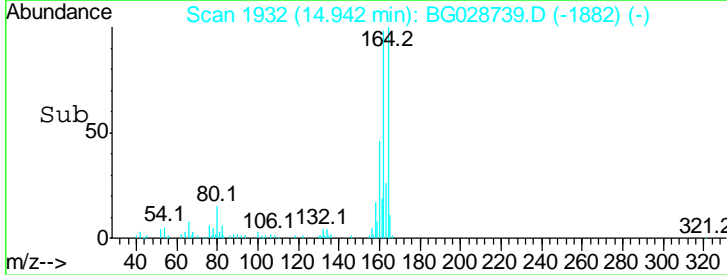
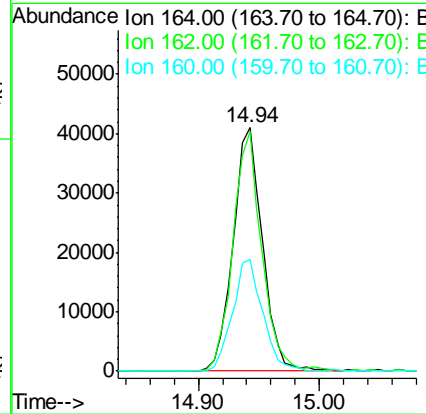
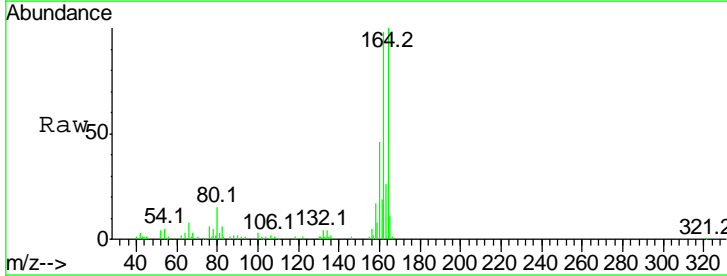
Instrument :
 BNA_G
 ClientSampled :

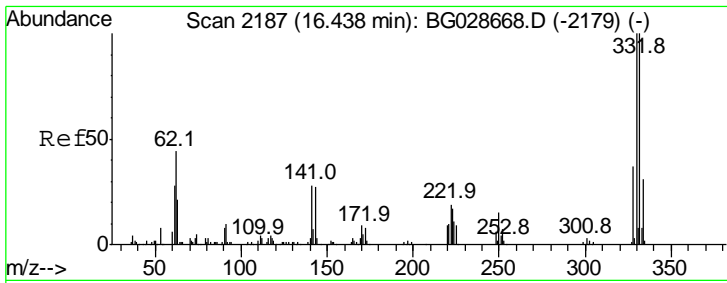
Tgt Ion	Resp	Lower	Upper
82	180876		
82	100		
128	36.9	26.4	39.6
54	53.6	49.4	74.2



#38
 Acenaphthene-d10
 Concen: 20.000 ng
 RT: 14.94 min Scan# 1932
 Delta R.T. -0.00 min
 Lab File: BG028739.D
 Acq: 14 Sep 2017 19:21

Tgt Ion	Resp	Lower	Upper
164	69444		
164	100		
162	98.3	85.1	127.7
160	45.8	34.7	52.1

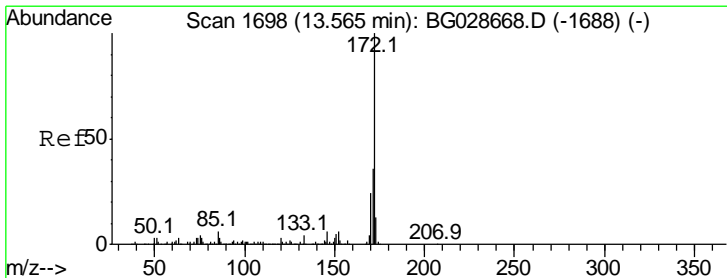
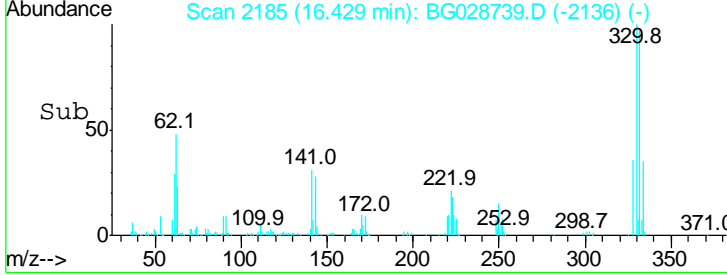
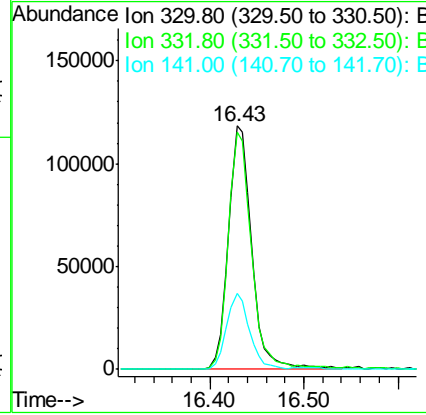
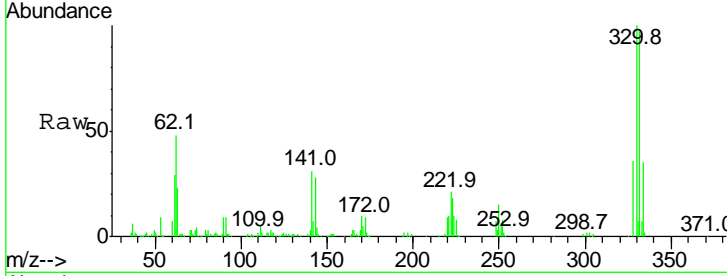




#41
 2,4,6-Tribromophenol
 Concen: 178.092 ng
 RT: 16.43 min Scan# 2185
 Delta R.T. -0.01 min
 Lab File: BG028739.D
 Acq: 14 Sep 2017 19:21

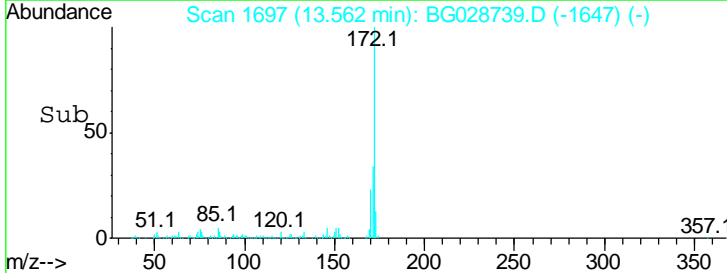
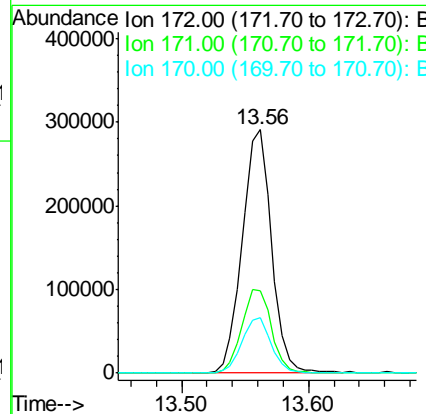
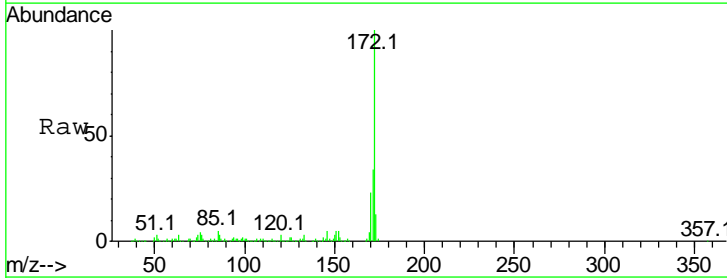
Instrument :
 BNA_G
 ClientSampled :

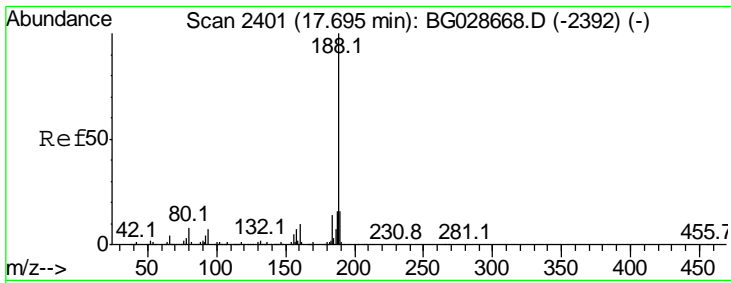
Tgt Ion	Resp	Lower	Upper
330	100		
332	97.2	77.3	115.9
141	30.9	32.1	48.1#



#44
 2-Fluorobiphenyl
 Concen: 89.195 ng
 RT: 13.56 min Scan# 1697
 Delta R.T. -0.00 min
 Lab File: BG028739.D
 Acq: 14 Sep 2017 19:21

Tgt Ion	Resp	Lower	Upper
172	100		
171	34.0	32.2	48.2
170	22.8	21.8	32.6

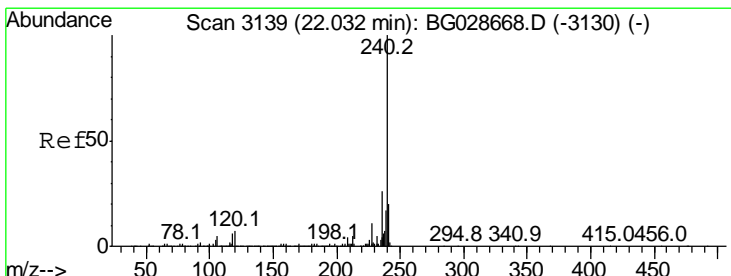
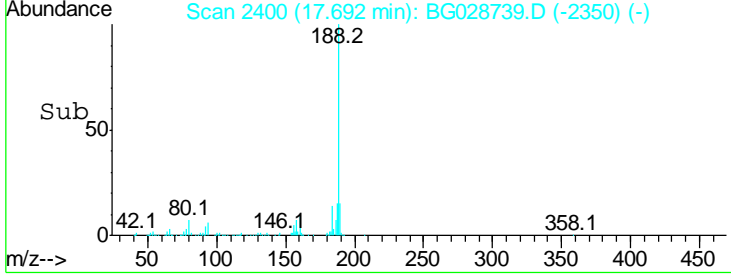
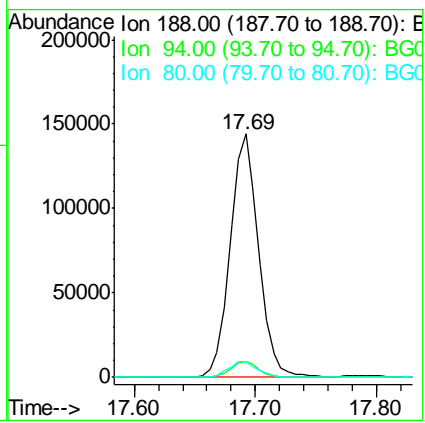
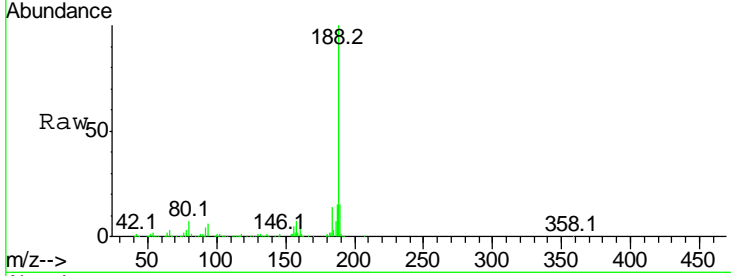




#63
 Phenanthrene-d10
 Concen: 20.000 ng
 RT: 17.69 min Scan# 2400
 Delta R.T. -0.00 min
 Lab File: BG028739.D
 Acq: 14 Sep 2017 19:21

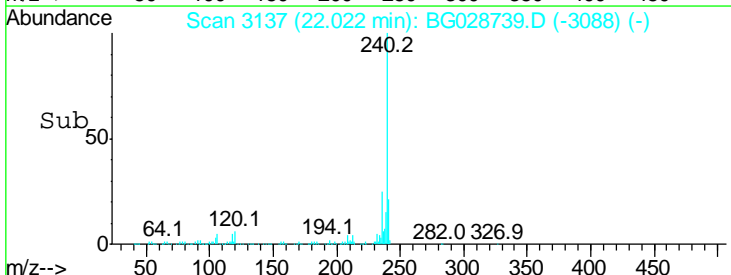
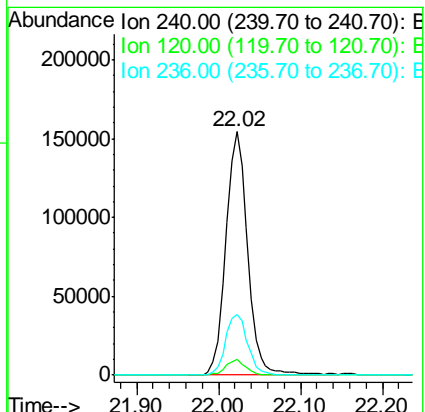
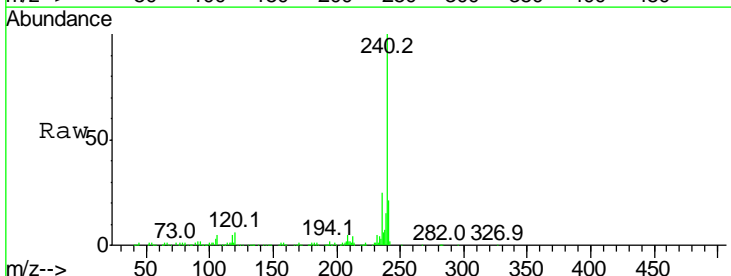
Instrument :
 BNA_G
 ClientSampled :

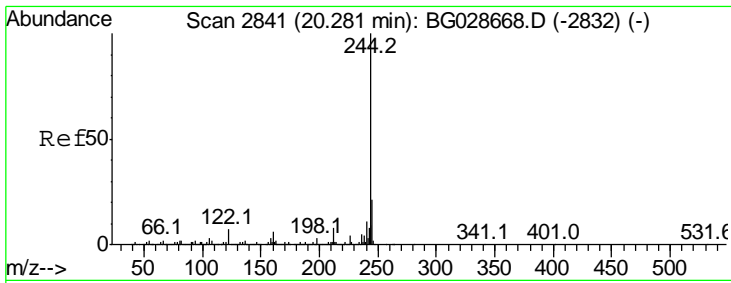
Tgt Ion	Resp	Lower	Upper
188	100		
94	6.3	5.8	8.8
80	6.5	7.5	11.3#



#75
 Chrysene-d12
 Concen: 20.000 ng
 RT: 22.02 min Scan# 3137
 Delta R.T. -0.01 min
 Lab File: BG028739.D
 Acq: 14 Sep 2017 19:21

Tgt Ion	Resp	Lower	Upper
240	100		
120	6.3	5.7	8.5
236	25.1	22.2	33.4



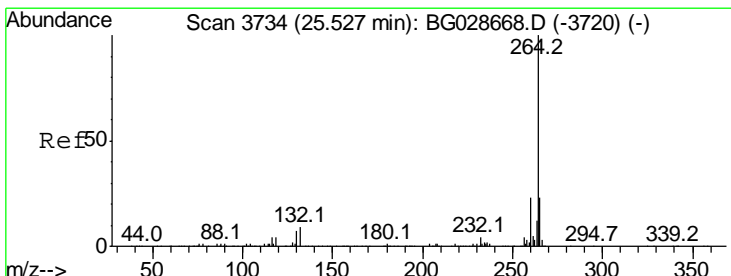
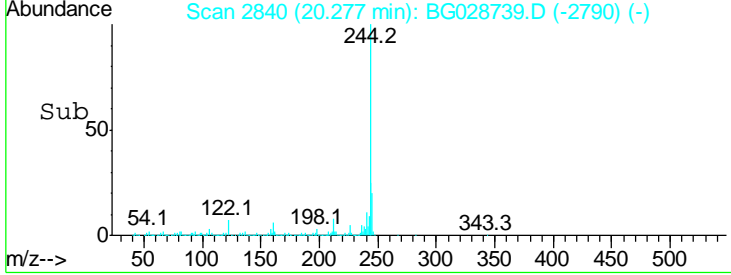
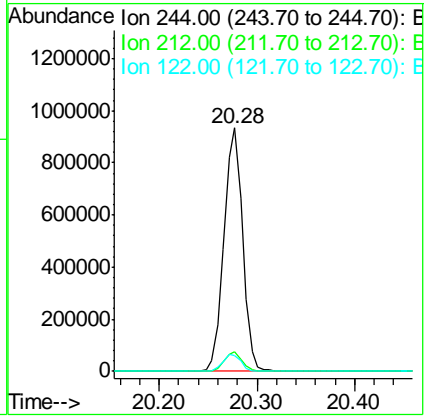
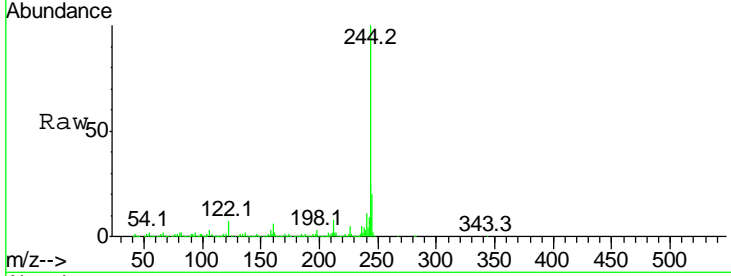


#78
 Terphenyl-d14
 Concen: 92.819 ng
 RT: 20.28 min Scan# 2840
 Delta R.T. -0.00 min
 Lab File: BG028739.D
 Acq: 14 Sep 2017 19:21

Instrument :
 BNA_G
 ClientSampled :

Tgt Ion: 244 Resp: 1242366

Ion	Ratio	Lower	Upper
244	100		
212	7.8	10.0	15.0#
122	6.7	8.6	12.8#



#86
 Perylene-d12
 Concen: 20.000 ng
 RT: 25.52 min Scan# 3733
 Delta R.T. -0.00 min
 Lab File: BG028739.D
 Acq: 14 Sep 2017 19:21

Tgt Ion: 264 Resp: 291078

Ion	Ratio	Lower	Upper
264	100		
260	24.2	21.8	32.8
265	19.9	18.2	27.4

