

Data Path : Z:\SVOASRV\HPCHEM1\BNA G\DATA\BG091719\
 Data File : BG042871.D
 Acq On : 17 Sep 2019 17:29
 Operator : HP/JU
 Sample : PB123079BL
 Misc :
 ALS Vial : 5 Sample Multiplier: 1

Instrument :
 BNA_G
 ClientSampleId :
 PB123079BL

Integration Parameters: rteint.p
 Integrator: RTE
 Smoothing : ON Filtering: 5
 Sampling : 1 Min Area: 3 % of largest Peak
 Start Thrs: 0.2 Max Peaks: 100
 Stop Thrs : 0 Peak Location: TOP

If leading or trailing edge < 100 prefer < Baseline drop else tangent >
 Peak separation: 5

Method : Z:\SVOASRV\HPCHEM1\BNA G\METHODS\8270-BG091219.M
 Title : ASP BNA STANDARDS FOR 5 POINT CALIBRATION

Signal : TIC

peak #	R.T. min	first scan	max scan	last scan	PK TY	peak height	corr. area	corr. % max.	% of total
1	3.208	14	20	30	rBV3	39915	91662	1.88%	0.427%
2	3.302	31	36	43	rVB	70193	90826	1.86%	0.423%
3	5.717	440	447	456	rBV	977324	1592078	32.69%	7.414%
4	7.309	708	718	731	rBV	1105171	1902646	39.06%	8.860%
5	7.661	771	778	787	rBV	995999	1722967	35.37%	8.023%
6	8.108	847	854	861	rBV	190801	336051	6.90%	1.565%
7	8.437	902	910	922	rBV	750321	1324158	27.19%	6.166%
8	9.277	1044	1053	1070	rBV	634388	1151681	23.65%	5.363%
9	10.916	1325	1332	1343	rVB	248246	451983	9.28%	2.105%
10	13.355	1740	1747	1759	rBV	1742959	2817271	57.84%	13.119%
11	14.730	1973	1981	1989	rBV	428578	700170	14.38%	3.260%
12	16.216	2227	2234	2248	rBV	1661958	2580545	52.98%	12.016%
13	17.474	2442	2448	2457	rVB	591564	947609	19.46%	4.413%
14	20.082	2886	2892	2897	rBV	3654266	4870600	100.00%	22.680%
15	21.751	3171	3176	3184	rVB2	523017	894933	18.37%	4.167%

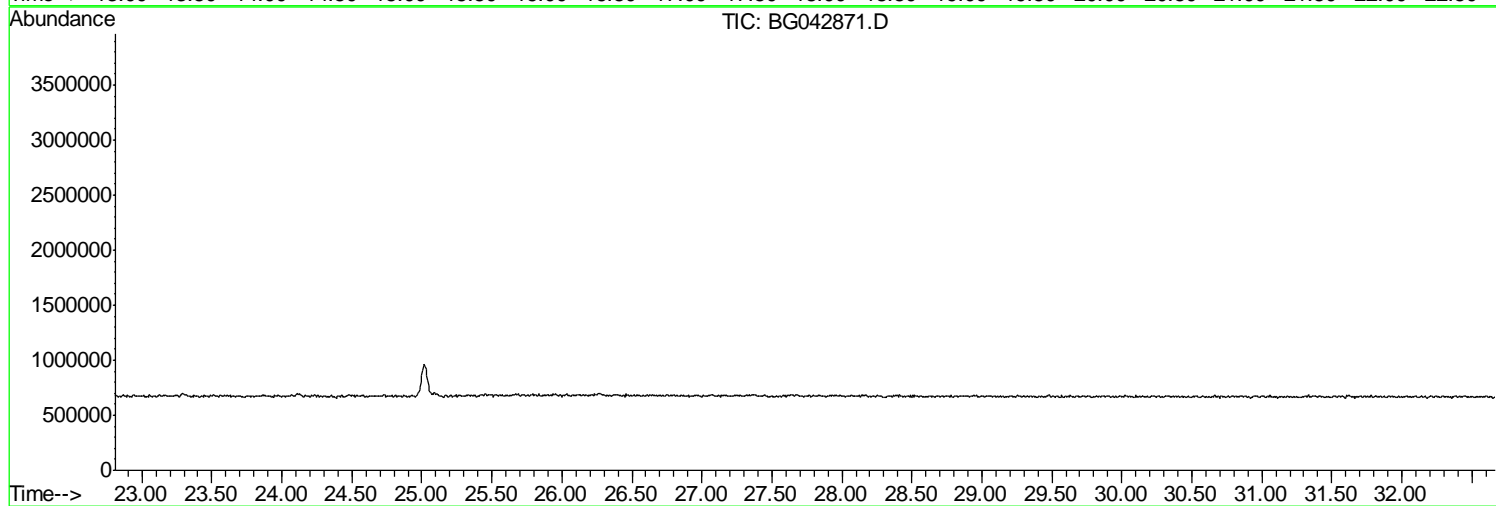
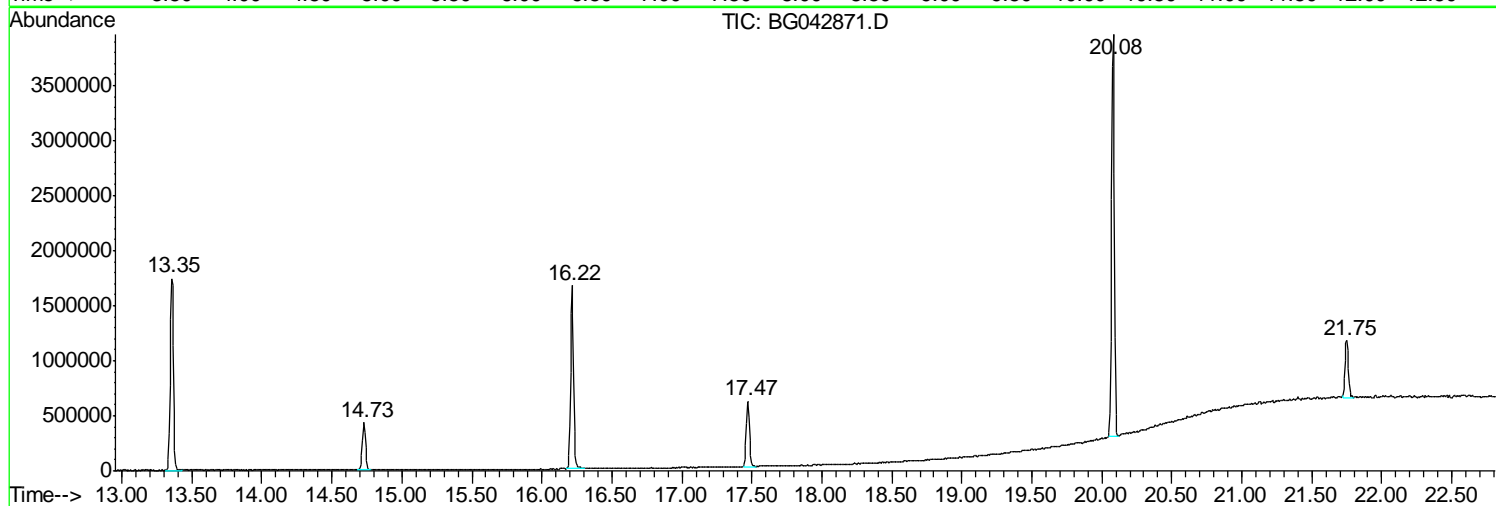
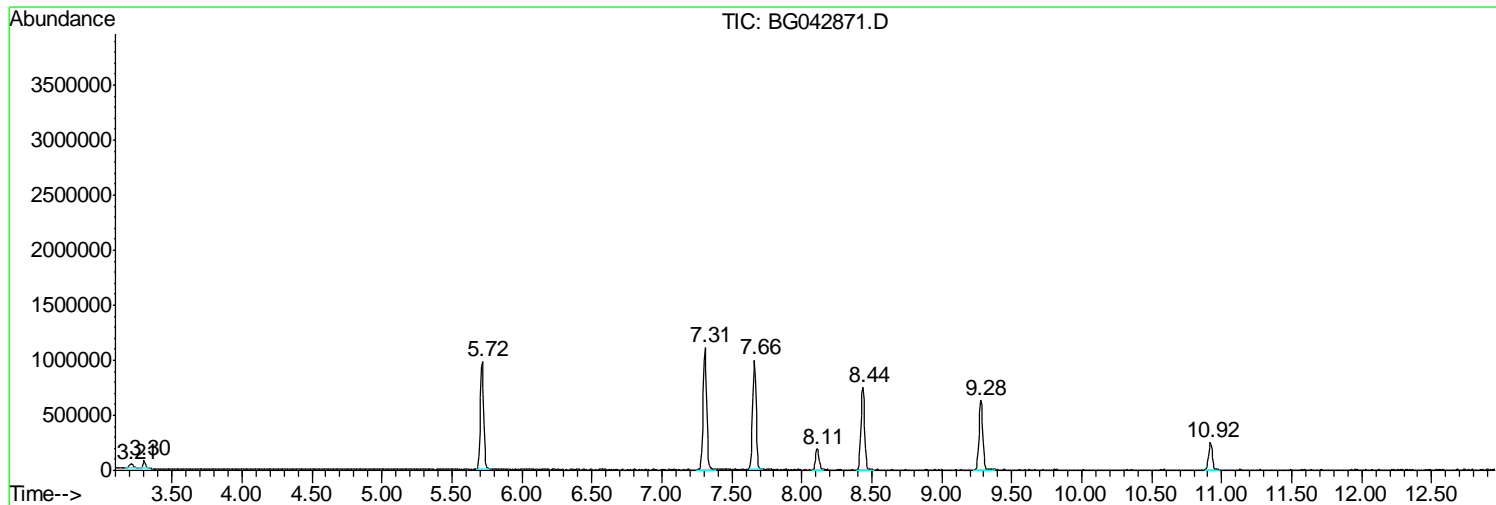
Sum of corrected areas: 21475180

Data Path : Z:\SVOASRV\HPCHEM1\BNA G\DATA\BG091719\
Data File : BG042871.D
Acq On : 17 Sep 2019 17:29
Operator : HP/JU
Sample : PB123079BL
Misc :
ALS Vial : 5 Sample Multiplier: 1

Instrument :
BNA_G
ClientSampleId :
PB123079BL

Quant Method : Z:\SVOASRV\HPCHEM1\BNA G\METHODS\8270-BG091219.M
Quant Title : ASP BNA STANDARDS FOR 5 POINT CALIBRATION

TIC Library : C:\Database\NIST11.L
TIC Integration Parameters: LSCINT.P



Data Path : Z:\SVOASRV\HPCHEM1\BNA G\DATA\BG091719\
 Data File : BG042871.D
 Acq On : 17 Sep 2019 17:29
 Operator : HP/JU
 Sample : PB123079BL
 Misc :
 ALS Vial : 5 Sample Multiplier: 1

Instrument :
 BNA_G
 ClientSampled :
 PB123079BL

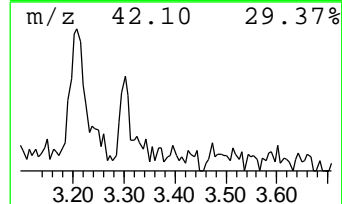
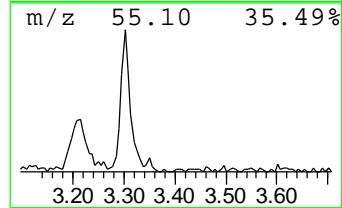
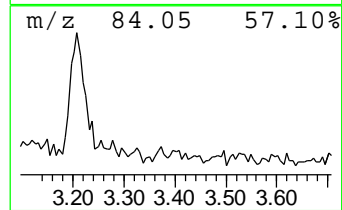
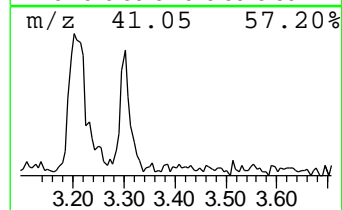
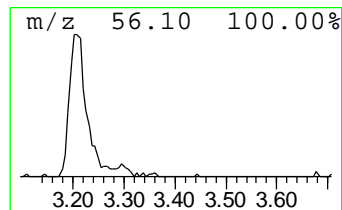
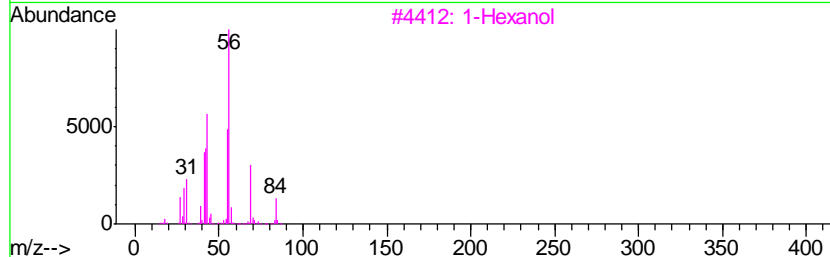
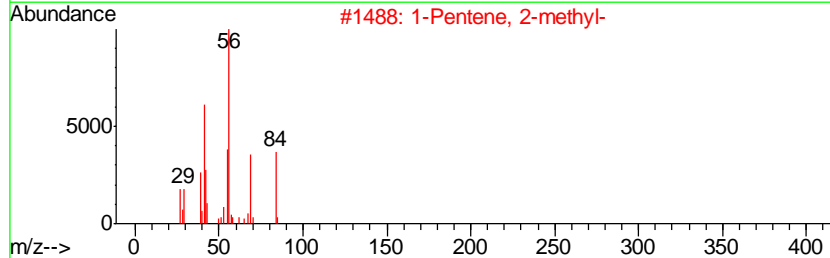
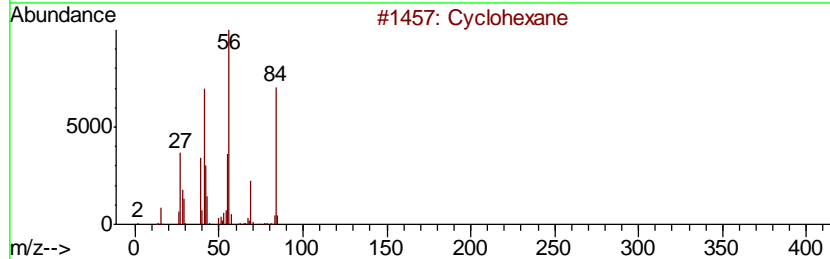
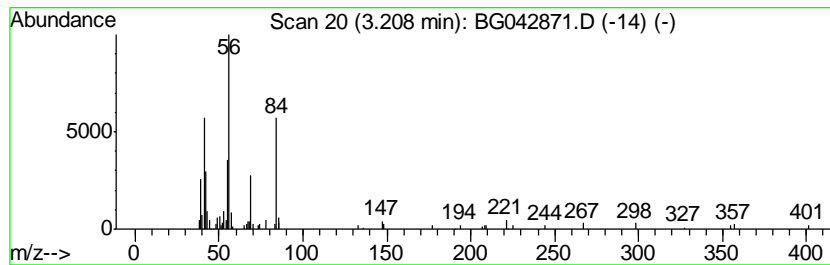
Quant Method : Z:\SVOASRV\HPCHEM1\BNA G\METHODS\8270-BG091219.M
 Quant Title : ASP BNA STANDARDS FOR 5 POINT CALIBRATION

TIC Library : C:\Database\NIST11.L
 TIC Integration Parameters: LSCINT.P

 Peak Number 1 1-Pentene, 2-methyl- Concentration Rank 3

R.T.	EstConc	Area	Relative to ISTD	R.T.
3.21	5.46 ng	91662	1,4-Dichlorobenzene-d4	8.11

Hit#	of	Tentative ID	MW	MolForm	CAS#	Qual
1	5	Cyclohexane	84	C6H12	000110-82-7	80
2		1-Pentene, 2-methyl-	84	C6H12	000763-29-1	72
3		1-Hexanol	102	C6H14O	000111-27-3	50
4		Formic acid, hexyl ester	130	C7H14O2	000629-33-4	50
5		Cyclopentane, methyl-	84	C6H12	000096-37-7	50



Data Path : Z:\SVOASRV\HPCHEM1\BNA G\DATA\BG091719\
 Data File : BG042871.D
 Acq On : 17 Sep 2019 17:29
 Operator : HP/JU
 Sample : PB123079BL
 Misc :
 ALS Vial : 5 Sample Multiplier: 1

Instrument :
 BNA_G
 ClientSampled :
 PB123079BL

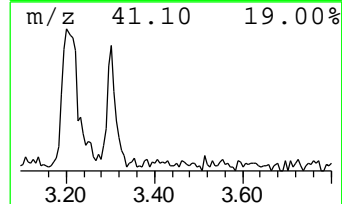
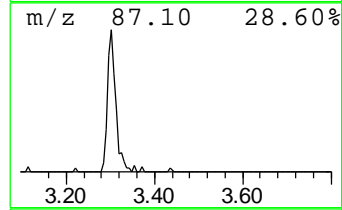
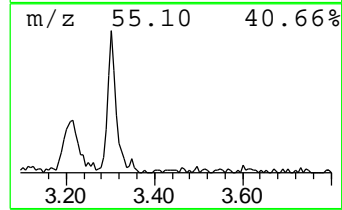
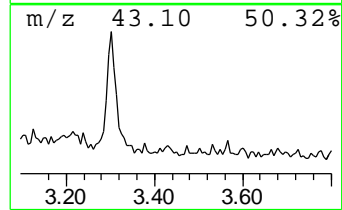
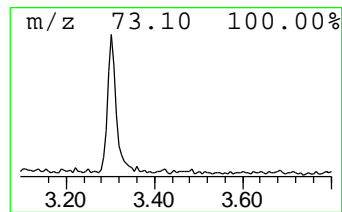
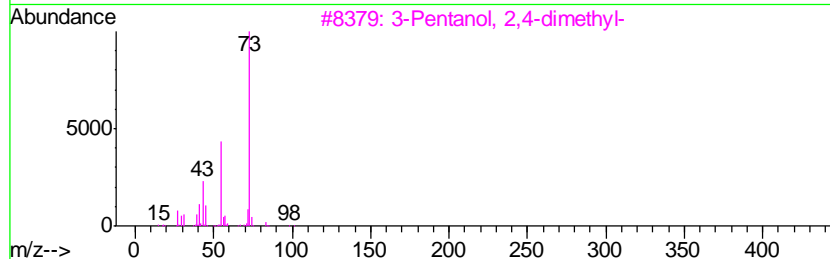
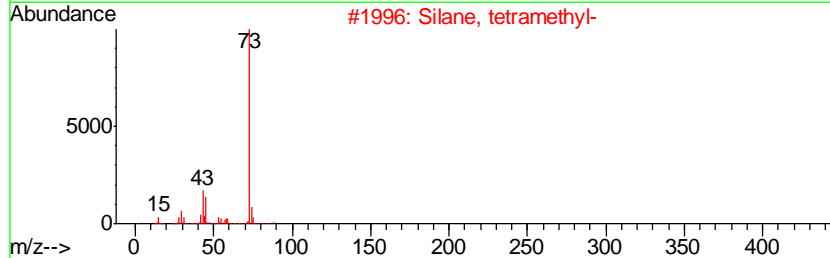
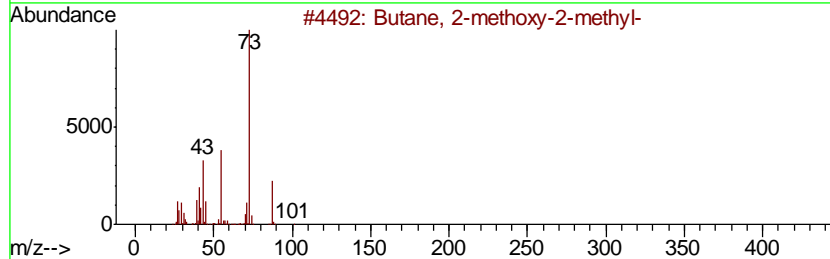
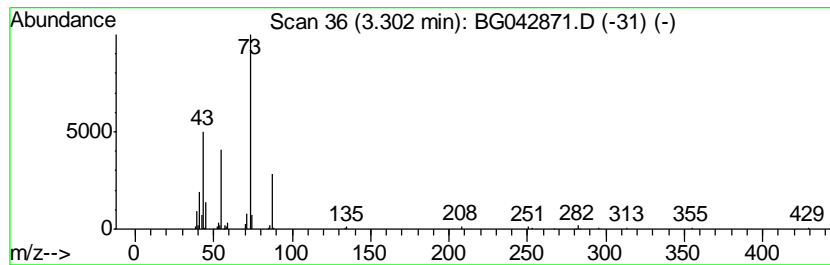
Quant Method : Z:\SVOASRV\HPCHEM1\BNA G\METHODS\8270-BG091219.M
 Quant Title : ASP BNA STANDARDS FOR 5 POINT CALIBRATION

TIC Library : C:\Database\NIST11.L
 TIC Integration Parameters: LSCINT.P

 Peak Number 2 Butane, 2-methoxy-2-methyl- Concentration Rank 4

R.T.	EstConc	Area	Relative to ISTD	R.T.
3.30	5.41 ng	90826	1,4-Dichlorobenzene-d4	8.11

Hit#	of	Tentative ID	MW	MolForm	CAS#	Qual
1	5	Butane, 2-methoxy-2-methyl-	102	C6H14O	000994-05-8	50
2		Silane, tetramethyl-	88	C4H12Si	000075-76-3	27
3		3-Pentanol, 2,4-dimethyl-	116	C7H16O	000600-36-2	23
4		2-Methyl-5-hexen-3-ol	114	C7H14O	032815-70-6	12
5		1-Propene-1-thiol	74	C3H6S	000925-89-3	9



Data Path : Z:\SVOASRV\HPCHEM1\BNA G\DATA\BG091719\
 Data File : BG042871.D
 Acq On : 17 Sep 2019 17:29
 Operator : HP/JU
 Sample : PB123079BL
 Misc :
 ALS Vial : 5 Sample Multiplier: 1

Instrument :
 BNA_G
 ClientSampleID :
 PB123079BL

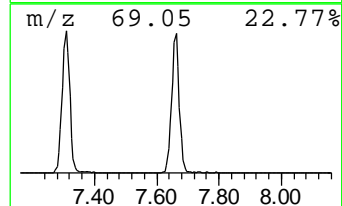
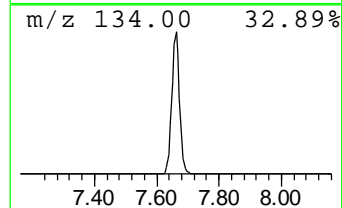
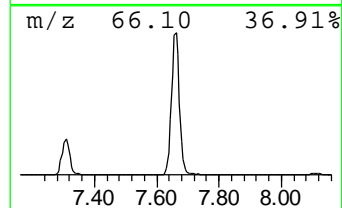
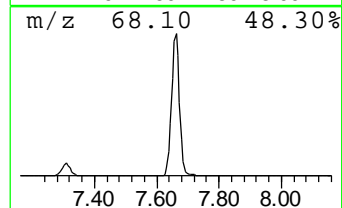
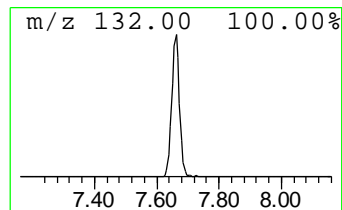
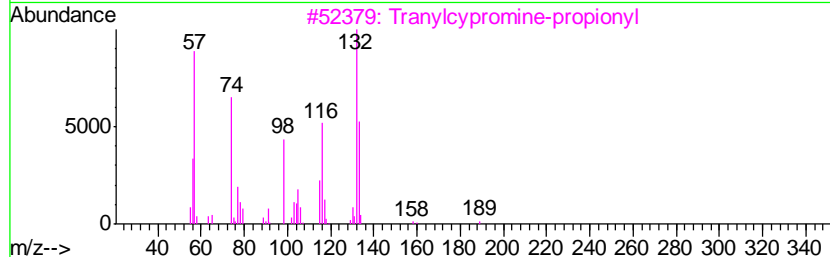
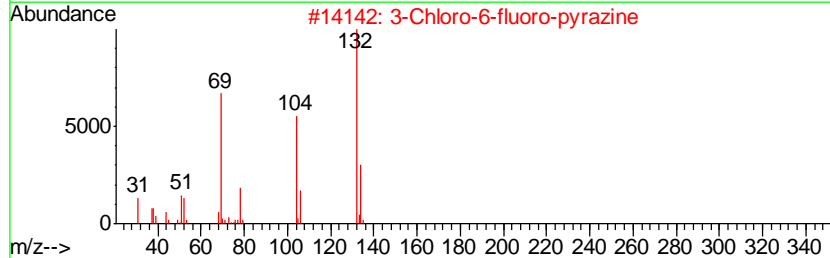
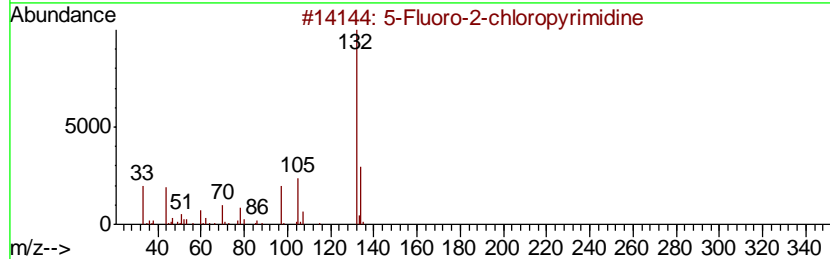
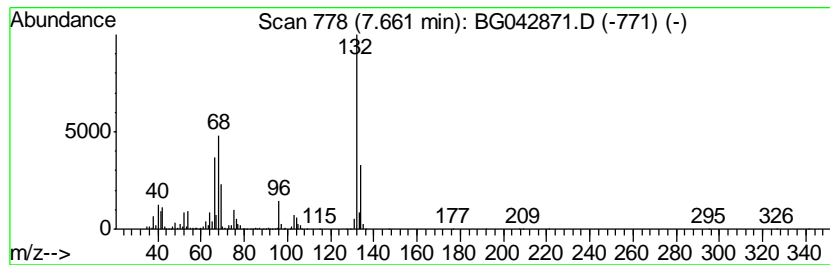
Quant Method : Z:\SVOASRV\HPCHEM1\BNA G\METHODS\8270-BG091219.M
 Quant Title : ASP BNA STANDARDS FOR 5 POINT CALIBRATION

TIC Library : C:\Database\NIST11.L
 TIC Integration Parameters: LSCINT.P

 Peak Number 3 unknown7.66 Concentration Rank 1

R.T.	EstConc	Area	Relative to ISTD	R.T.
7.66	102.54 ng	1722970	1,4-Dichlorobenzene-d4	8.11

Hit#	of	Tentative ID	MW	MolForm	CAS#	Qual
1	5	5-Fluoro-2-chloropyrimidine	132	C4H2ClFN2	062802-42-0	27
2		3-Chloro-6-fluoro-pyrazine	132	C4H2ClFN2	1000146-10-7	27
3		Tranvlcypromine-propionyl	189	C12H15NO	1000123-86-3	22
4		Cyclopropanamine, 1-phenyl-	133	C9H11N	1000351-26-2	14
5		1,3-Cyclopentanedione, 2-chloro-	132	C5H5ClO2	014203-19-1	13



Data Path : Z:\SVOASRV\HPCHEM1\BNA_G\DATA\BG091719\
Data File : BG042871.D
Acq On : 17 Sep 2019 17:29
Operator : HP/JU
Sample : PB123079BL
Misc :
ALS Vial : 5 Sample Multiplier: 1

Instrument :
BNA_G
ClientSampleId :
PB123079BL

Quant Method : Z:\SVOASRV\HPCHEM1\BNA_G\METHODS\8270-BG091219.M
Quant Title : ASP BNA STANDARDS FOR 5 POINT CALIBRATION

TIC Library : C:\Database\NIST11.L
TIC Integration Parameters: LSCINT.P

TIC Top Hit name	RT	EstConc	Units	Response	--Internal Standard--			
					#	RT	Resp	Conc
1-Pentene, 2-methyl-	3.21	5.5	ng	91662	1	8.11	336051	20.0
Butane, 2-methoxy...	3.30	5.4	ng	90826	1	8.11	336051	20.0
unknown7.66	7.66	102.5	ng	1722970	1	8.11	336051	20.0