

Data Path : Z:\SVOASRV\HPCHEM1\BNA G\DATA\BG091720\  
 Data File : BG046666.D  
 Acq On : 17 Sep 2020 18:30  
 Operator : CG/JU  
 Sample : L4038-13  
 Misc :  
 ALS Vial : 6 Sample Multiplier: 1

Instrument :  
 BNA\_G  
 ClientSampleId :  
 FIELD-BLANK

Integration Parameters: rteint.p  
 Integrator: RTE  
 Smoothing : ON Filtering: 5  
 Sampling : 1 Min Area: 3 % of largest Peak  
 Start Thrs: 0.2 Max Peaks: 100  
 Stop Thrs : 0 Peak Location: TOP

If leading or trailing edge < 100 prefer < Baseline drop else tangent >  
 Peak separation: 5

Method : Z:\SVOASRV\HPCHEM1\BNA G\METHODS\8270-BG082520.M  
 Title : ASP BNA STANDARDS FOR 5 POINT CALIBRATION

Signal : TIC

peak #	R.T. min	first scan	max scan	last scan	PK TY	peak height	corr. area	corr. % max.	% of total
1	3.118	3	5	19	rVB	129673	174671	3.14%	1.034%
2	5.509	405	412	427	rBV	368895	606108	10.88%	3.588%
3	7.095	675	682	699	rBV	214532	417858	7.50%	2.474%
4	7.924	816	823	832	rVB	140526	245592	4.41%	1.454%
5	9.075	1011	1019	1034	rBV	499986	949547	17.04%	5.622%
6	10.721	1291	1299	1320	rBV	186710	378951	6.80%	2.244%
7	13.176	1709	1717	1730	rBV	1482954	2422040	43.47%	14.339%
8	14.551	1943	1951	1964	rBV2	379579	641642	11.52%	3.799%
9	16.044	2198	2205	2227	rBV	1272623	2089495	37.50%	12.371%
10	17.295	2412	2418	2432	rBV	567711	917422	16.47%	5.432%
11	19.916	2857	2864	2877	rBV	3999314	5571330	100.00%	32.985%
12	21.543	3134	3141	3158	rVB	676608	1132151	20.32%	6.703%
13	22.994	3379	3388	3397	rBV4	36961	93391	1.68%	0.553%
14	23.770	3513	3520	3528	rVB2	29687	67448	1.21%	0.399%
15	24.640	3657	3668	3685	rBV2	393675	1183089	21.24%	7.004%

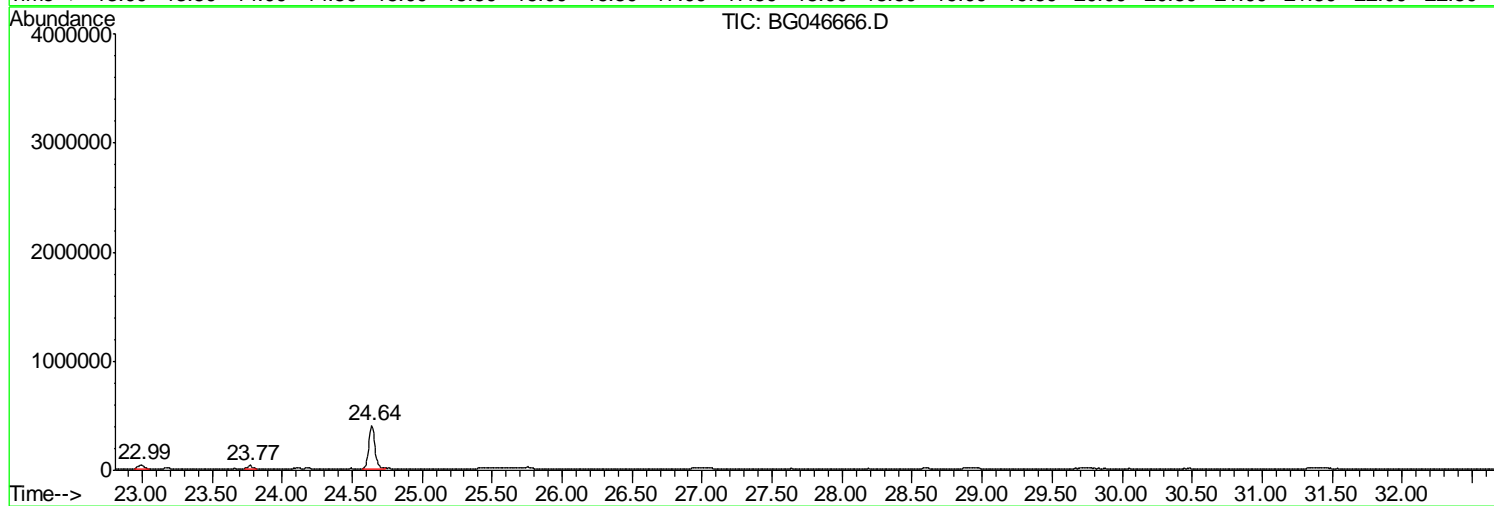
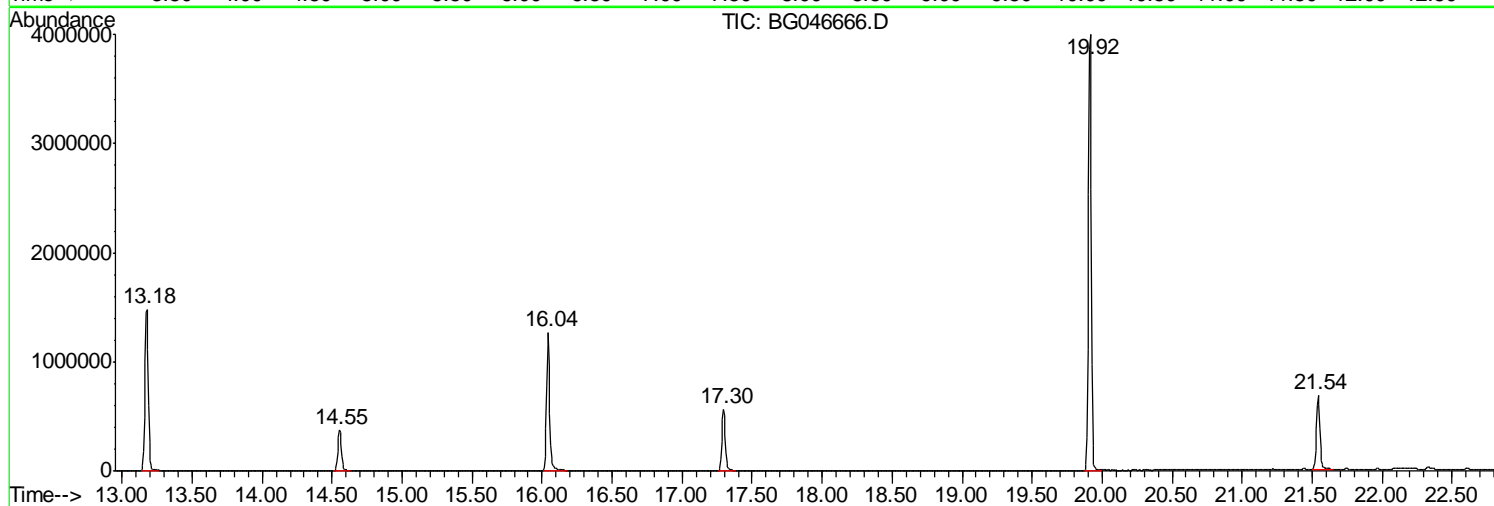
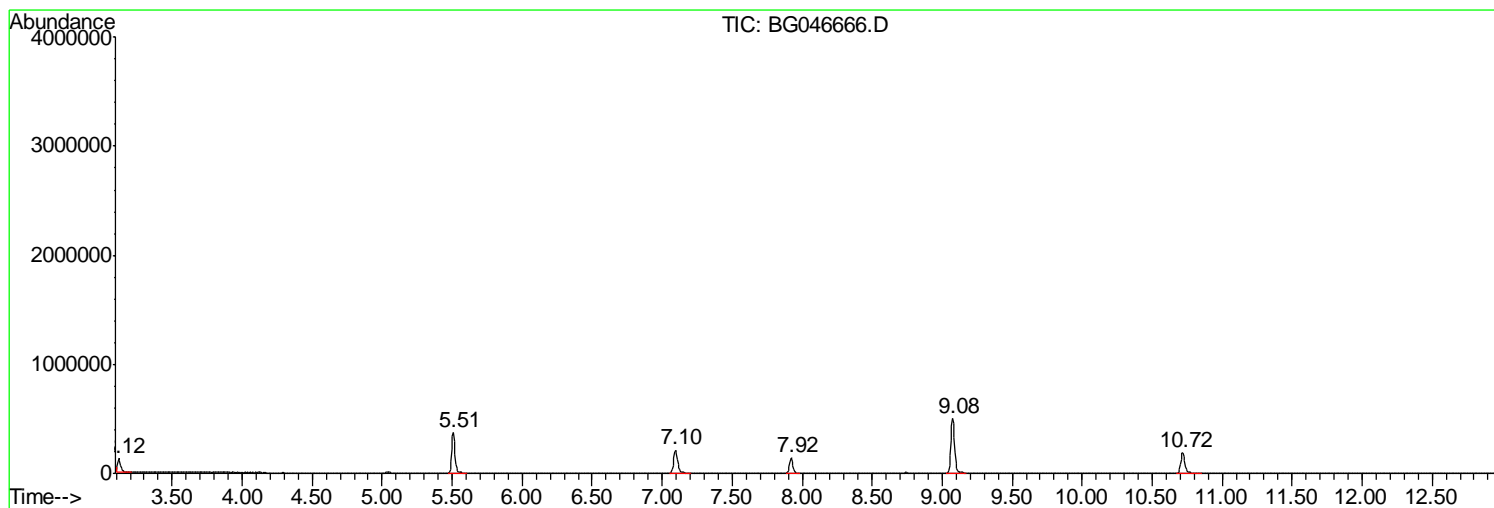
Sum of corrected areas: 16890735

Data Path : Z:\SVOASRV\HPCHEM1\BNA G\DATA\BG091720\  
Data File : BG046666.D  
Acq On : 17 Sep 2020 18:30  
Operator : CG/JU  
Sample : L4038-13  
Misc :  
ALS Vial : 6 Sample Multiplier: 1

Instrument :  
BNA\_G  
ClientSampled :  
FIELD-BLANK

Quant Method : Z:\SVOASRV\HPCHEM1\BNA G\METHODS\8270-BG082520.M  
Quant Title : ASP BNA STANDARDS FOR 5 POINT CALIBRATION

TIC Library : C:\Database\NIST11.L  
TIC Integration Parameters: LSCINT.P



Data Path : Z:\SVOASRV\HPCHEM1\BNA G\DATA\BG091720\  
 Data File : BG046666.D  
 Acq On : 17 Sep 2020 18:30  
 Operator : CG/JU  
 Sample : L4038-13  
 Misc :  
 ALS Vial : 6 Sample Multiplier: 1

Instrument :  
 BNA\_G  
 ClientSampled :  
 FIELD-BLANK

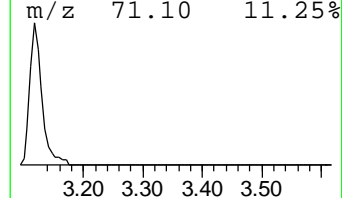
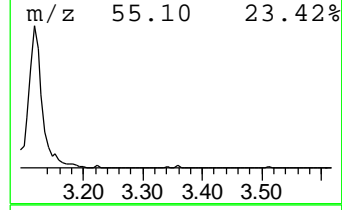
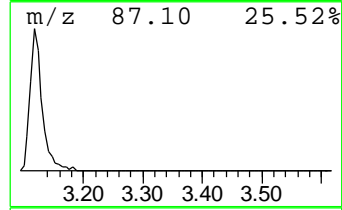
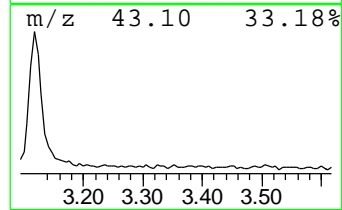
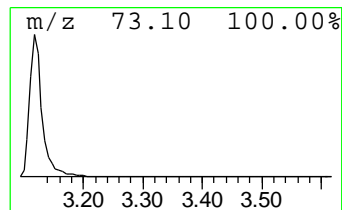
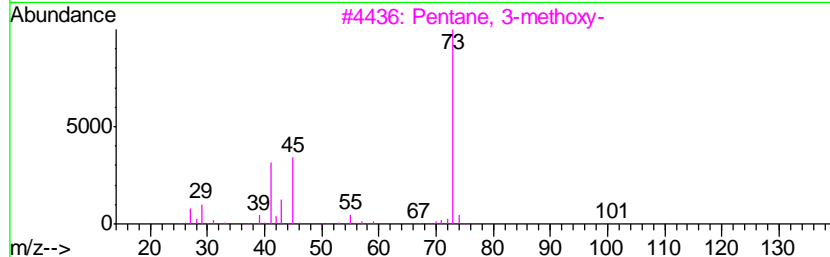
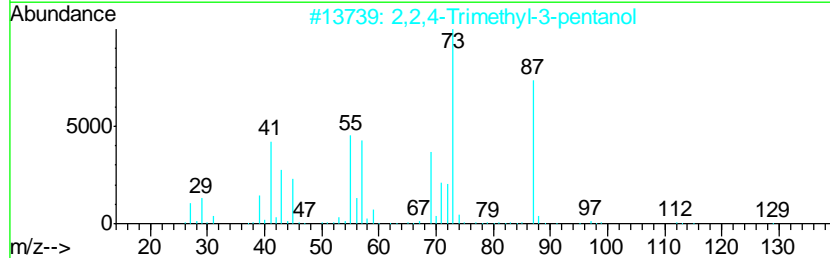
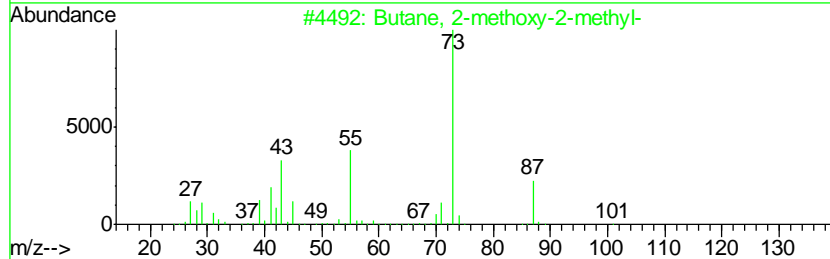
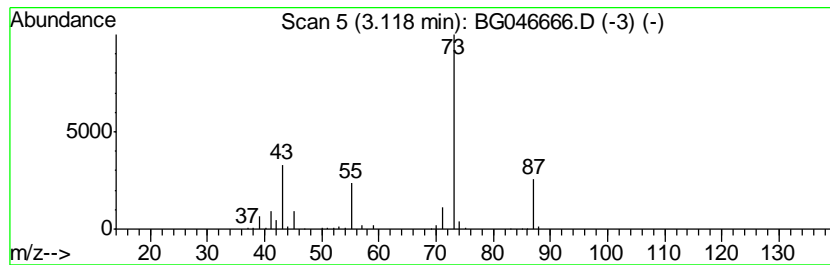
Quant Method : Z:\SVOASRV\HPCHEM1\BNA G\METHODS\8270-BG082520.M  
 Quant Title : ASP BNA STANDARDS FOR 5 POINT CALIBRATION

TIC Library : C:\Database\NIST11.L  
 TIC Integration Parameters: LSCINT.P

\*\*\*\*\*  
 Peak Number 1 Butane, 2-methoxy-2-methyl- Concentration Rank 1

R.T.	EstConc	Area	Relative to ISTD	R.T.
3.12	14.22 ng	174671	1,4-Dichlorobenzene-d4	7.92

Hit#	of	Tentative ID	MW	MolForm	CAS#	Qual
1	5	Butane, 2-methoxy-2-methyl-	102	C6H14O	000994-05-8	83
2		2,2,4-Trimethyl-3-pentanol	130	C8H18O	005162-48-1	40
3		Pentane, 3-methoxy-	102	C6H14O	036839-67-5	23
4		Acetamide, N-ethyl-	87	C4H9NO	000625-50-3	12
5		1,3-Dioxolane, 2-methyl-	88	C4H8O2	000497-26-7	9



Data Path : Z:\SVOASRV\HPCHEM1\BNA\_G\DATA\BG091720\  
Data File : BG046666.D  
Acq On : 17 Sep 2020 18:30  
Operator : CG/JU  
Sample : L4038-13  
Misc :  
ALS Vial : 6 Sample Multiplier: 1

Instrument :  
BNA\_G  
ClientSampleId :  
FIELD-BLANK

Quant Method : Z:\SVOASRV\HPCHEM1\BNA\_G\METHODS\8270-BG082520.M  
Quant Title : ASP BNA STANDARDS FOR 5 POINT CALIBRATION

TIC Library : C:\Database\NIST11.L  
TIC Integration Parameters: LSCINT.P

TIC Top Hit name	RT	EstConc	Units	Response	--Internal Standard--			
					#	RT	Resp	Conc
Butane, 2-methoxy...	3.12	14.2	ng	174671	1	7.92	245592	20.0