

Data Path : Z:\HPCHEM1\BNA G\DATA\BG091817\
 Data File : BG028808.D
 Acq On : 18 Sep 2017 23:38
 Operator : SJ/JU
 Sample : I5259-08
 Misc :
 ALS Vial : 18 Sample Multiplier: 1

Instrument :
 BNA_G
 ClientSampleId :

Quant Time: Sep 19 01:15:08 2017
 Quant Method : Z:\HPCHEM1\BNA G\METHODS\8270-BG091217.M
 Quant Title : ASP BNA STANDARDS FOR 5 POINT CALIBRATION
 QLast Update : Tue Sep 12 16:57:11 2017
 Response via : Initial Calibration

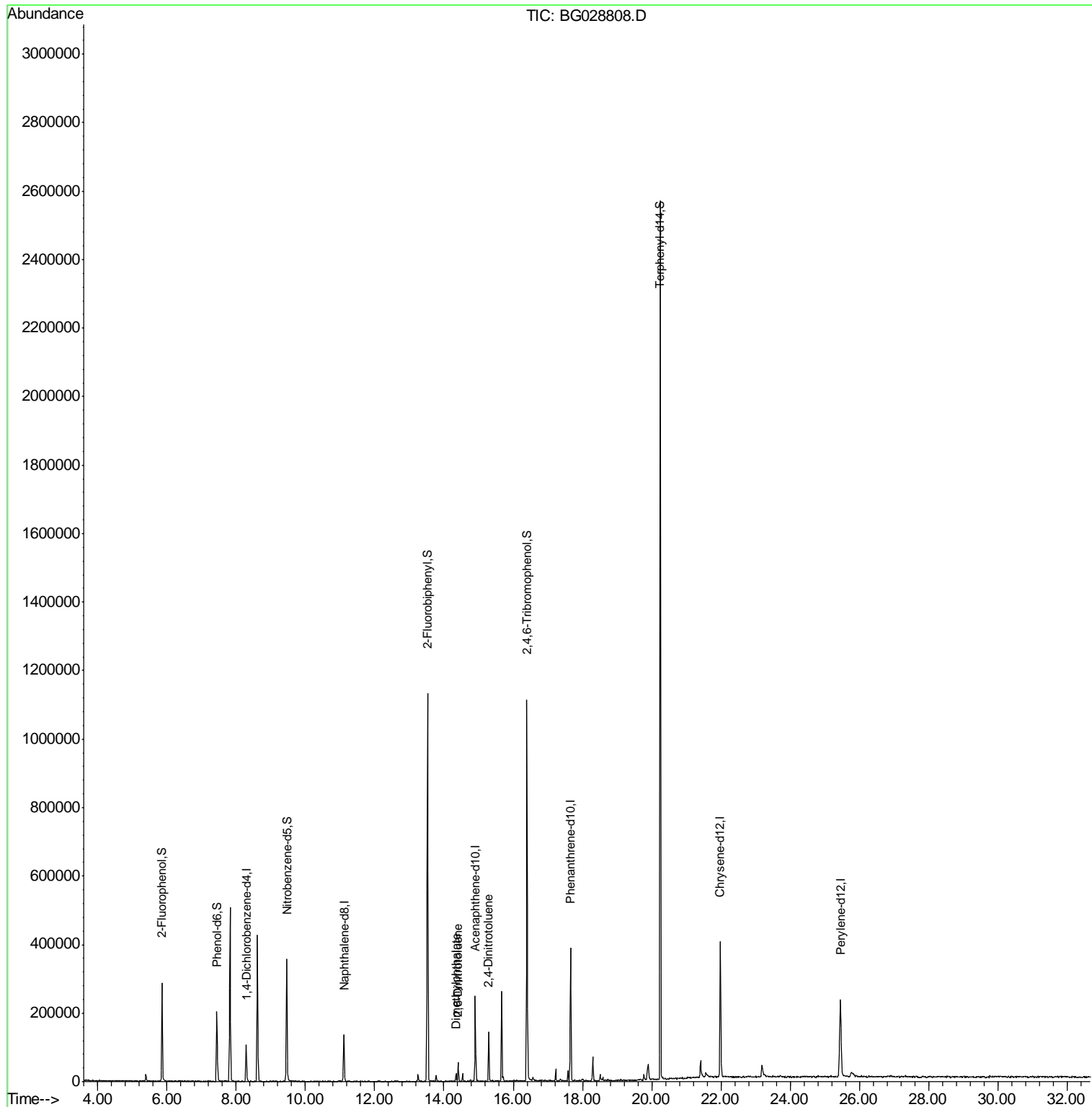
Internal Standards	R.T.	QIon	Response	Conc	Units	Dev(Min)
1) 1,4-Dichlorobenzene-d4	8.29	152	29119	20.00	ng	-0.04
21) Naphthalene-d8	11.11	136	122365	20.00	ng	-0.04
38) Acenaphthene-d10	14.91	164	94149	20.00	ng	-0.04
63) Phenanthrene-d10	17.66	188	260329	20.00	ng	-0.04
75) Chrysene-d12	21.98	240	286942	20.00	ng	-0.05
86) Perylene-d12	25.45	264	295022	20.00	ng	-0.07
System Monitoring Compounds						
5) 2-Fluorophenol	5.86	112	123986	70.26	ng	-0.04
7) Phenol-d6	7.44	99	122444	46.08	ng	-0.05
23) Nitrobenzene-d5	9.46	82	232888	91.05	ng	-0.05
41) 2,4,6-Tribromophenol	16.40	330	243023	156.07	ng	-0.04
44) 2-Fluorobiphenyl	13.53	172	622826	88.21	ng	-0.04
78) Terphenyl-d14	20.25	244	1180701	87.75	ng	-0.03
Target Compounds						
49) Dimethylphthalate	14.35	163	17509	2.22	ng	98
50) 2,6-Dinitrotoluene	14.41	165	8872	5.05	ng	# 13
56) 2,4-Dinitrotoluene	15.29	165	6520	2.64	ng	# 18

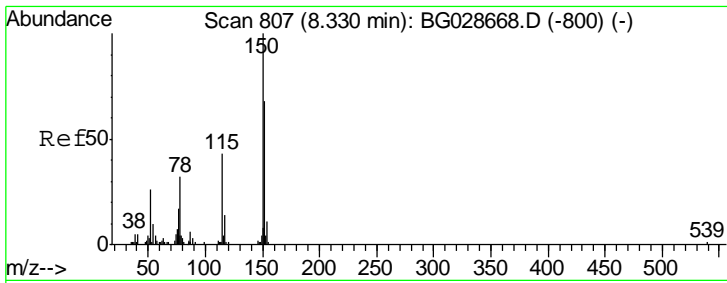
(#) = qualifier out of range (m) = manual integration (+) = signals summed

Data Path : Z:\HPCHEM1\BNA G\DATA\BG091817\
 Data File : BG028808.D
 Acq On : 18 Sep 2017 23:38
 Operator : SJ/JU
 Sample : I5259-08
 Misc :
 ALS Vial : 18 Sample Multiplier: 1

Instrument :
 BNA_G
 ClientSampled :

Quant Time: Sep 19 01:15:08 2017
 Quant Method : Z:\HPCHEM1\BNA G\METHODS\8270-BG091217.M
 Quant Title : ASP BNA STANDARDS FOR 5 POINT CALIBRATION
 QLast Update : Tue Sep 12 16:57:11 2017
 Response via : Initial Calibration

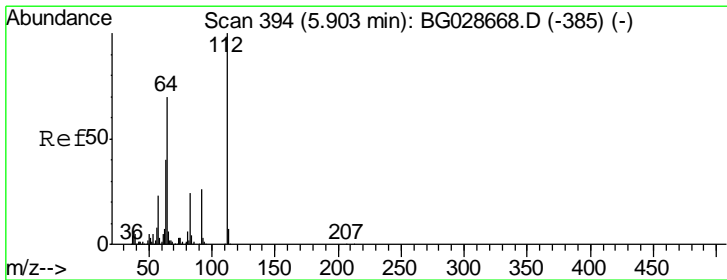
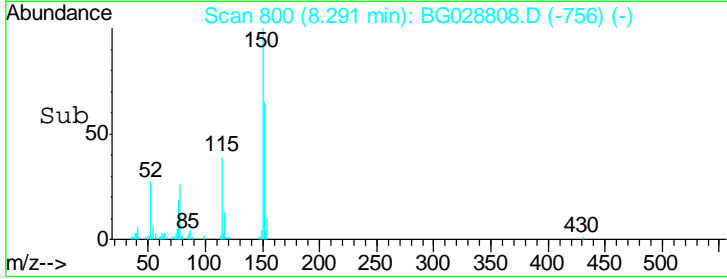
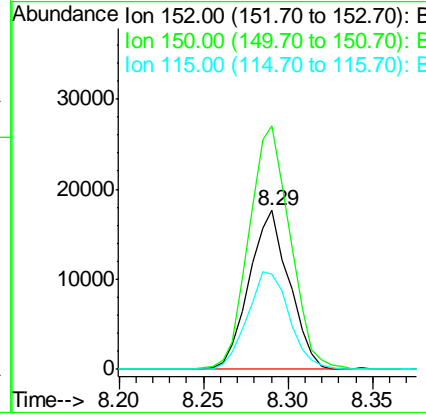
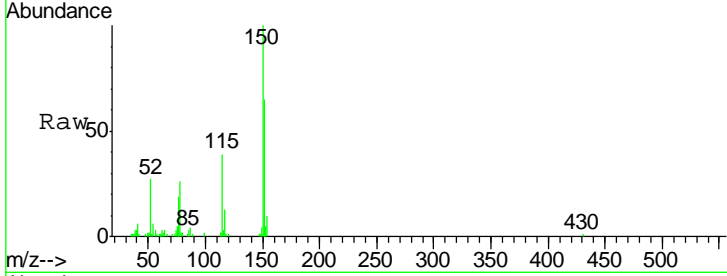




#1
 1,4-Dichlorobenzene-d4
 Concen: 20.00 ng
 RT: 8.29 min Scan# 800
 Delta R.T. -0.04 min
 Lab File: BG028808.D
 Acq: 18 Sep 2017 23:38

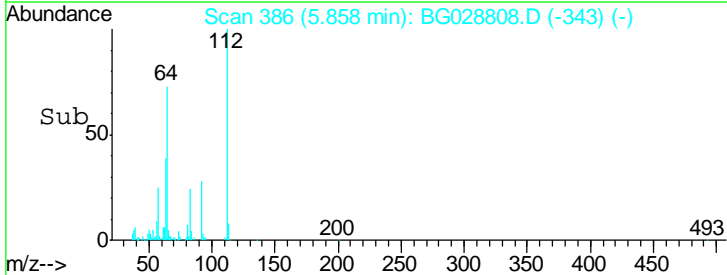
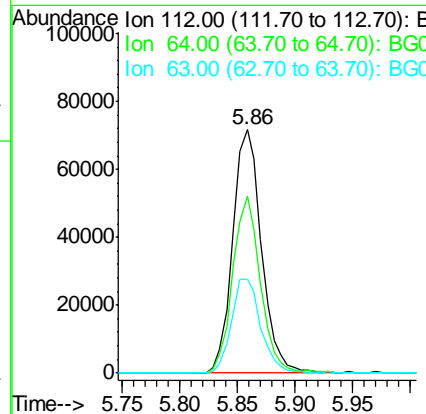
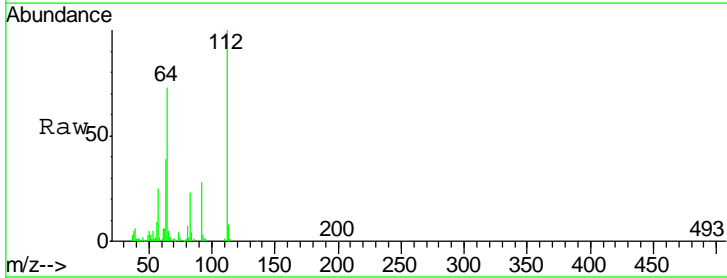
Instrument :
 BNA_G
 ClientSampled :

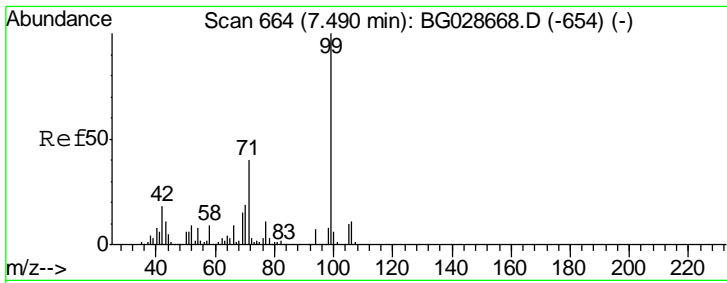
Tgt Ion	Resp	Lower	Upper
152	29119		
152	100		
150	153.2	114.0	171.0
115	60.0	48.1	72.1



#5
 2-Fluorophenol
 Concen: 70.26 ng
 RT: 5.86 min Scan# 386
 Delta R.T. -0.04 min
 Lab File: BG028808.D
 Acq: 18 Sep 2017 23:38

Tgt Ion	Resp	Lower	Upper
112	123986		
112	100		
64	72.8	61.8	92.6
63	38.6	37.2	55.8

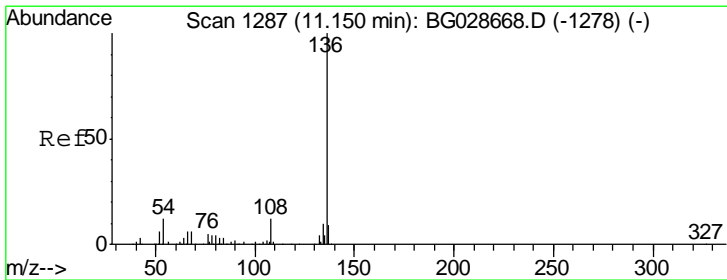
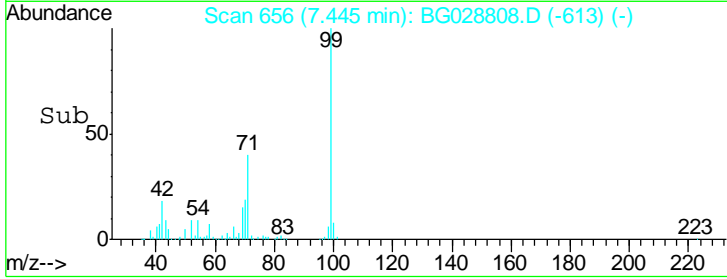
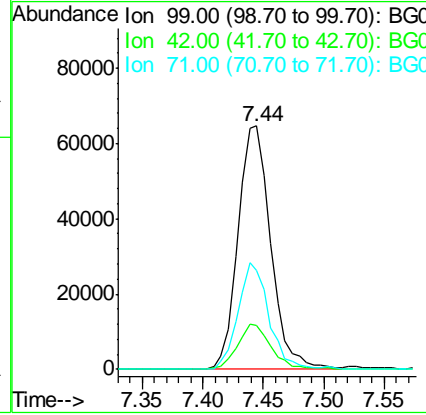
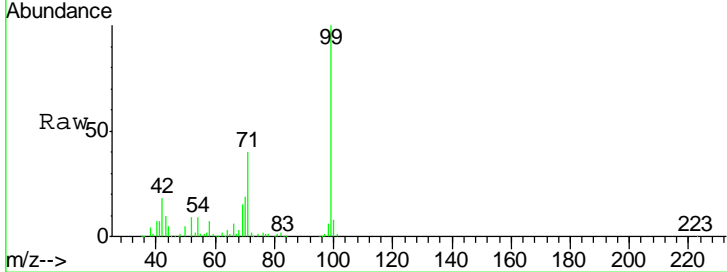




#7
 Phenol-d6
 Concen: 46.08 ng
 RT: 7.44 min Scan# 656
 Delta R.T. -0.05 min
 Lab File: BG028808.D
 Acq: 18 Sep 2017 23:38

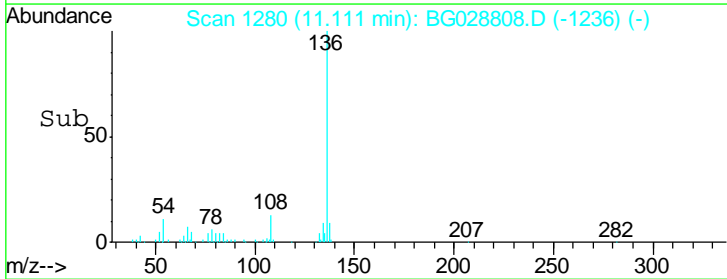
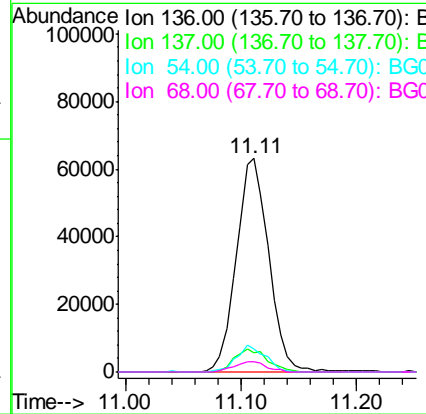
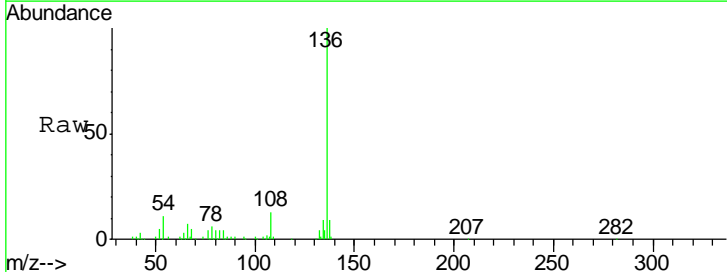
Instrument :
 BNA_G
 ClientSampled :

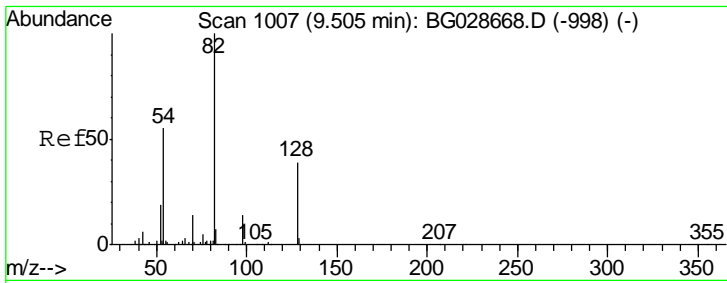
Tgt Ion	Resp	Lower	Upper
99	122444		
42	18.2	20.5	30.7#
71	40.4	37.6	56.4



#21
 Naphthalene-d8
 Concen: 20.00 ng
 RT: 11.11 min Scan# 1280
 Delta R.T. -0.04 min
 Lab File: BG028808.D
 Acq: 18 Sep 2017 23:38

Tgt Ion	Resp	Lower	Upper
136	122365		
137	8.8	8.9	13.3#
54	10.9	9.3	13.9
68	5.1	5.1	7.7#

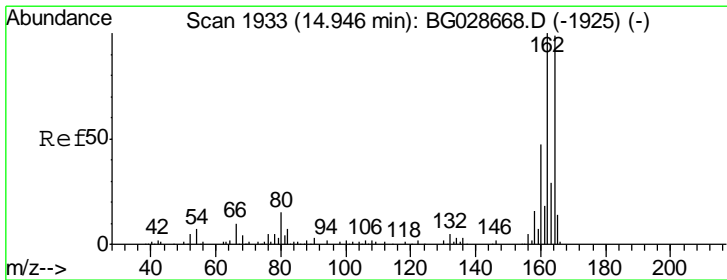
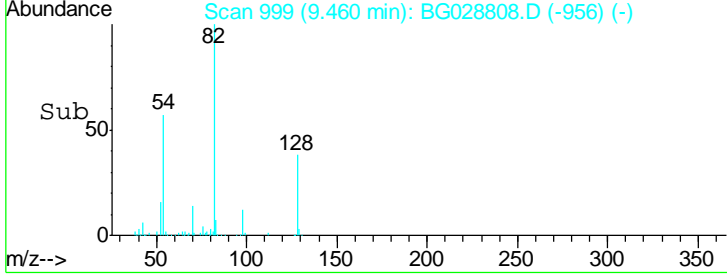
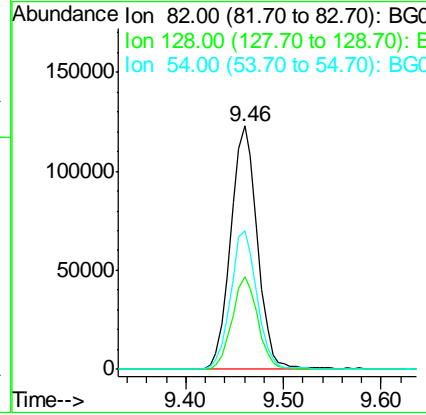
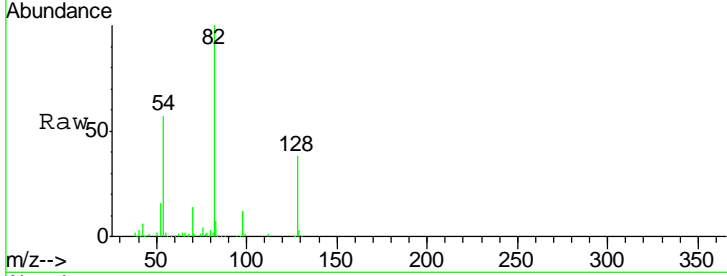




#23
 Nitrobenzene-d5
 Concen: 91.05 ng
 RT: 9.46 min Scan# 999
 Delta R.T. -0.05 min
 Lab File: BG028808.D
 Acq: 18 Sep 2017 23:38

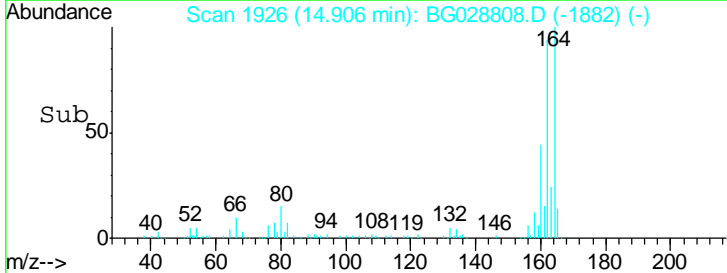
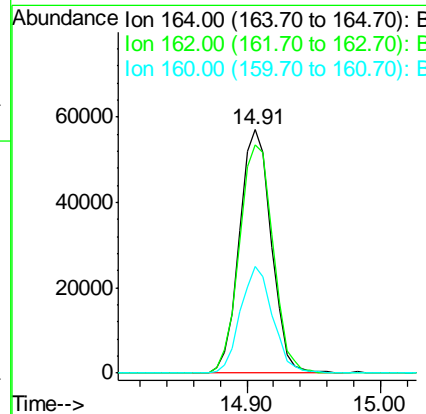
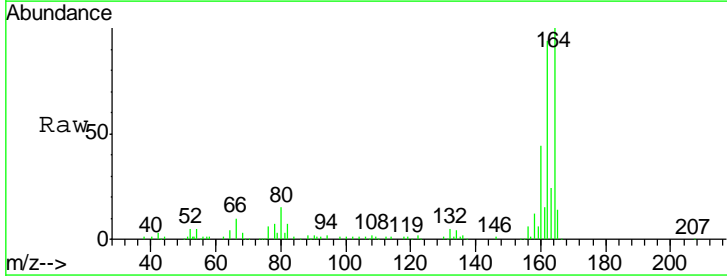
Instrument :
 BNA_G
 ClientSampled :

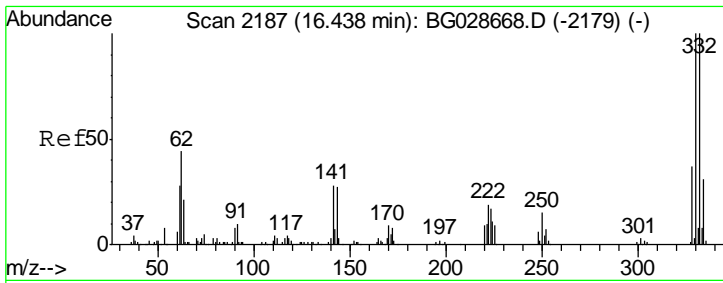
Tgt Ion	Resp	Lower	Upper
82	232888		
128	37.9	26.4	39.6
54	57.1	49.4	74.2



#38
 Acenaphthene-d10
 Concen: 20.00 ng
 RT: 14.91 min Scan# 1926
 Delta R.T. -0.04 min
 Lab File: BG028808.D
 Acq: 18 Sep 2017 23:38

Tgt Ion	Resp	Lower	Upper
164	94149		
162	93.6	85.1	127.7
160	43.9	34.7	52.1

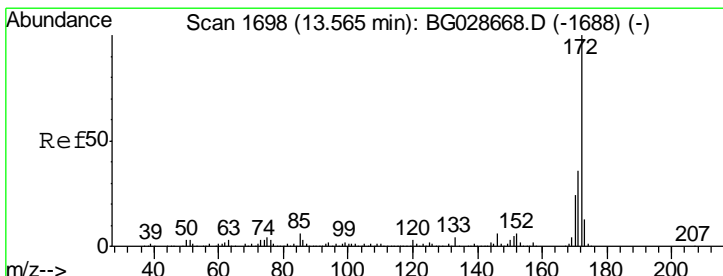
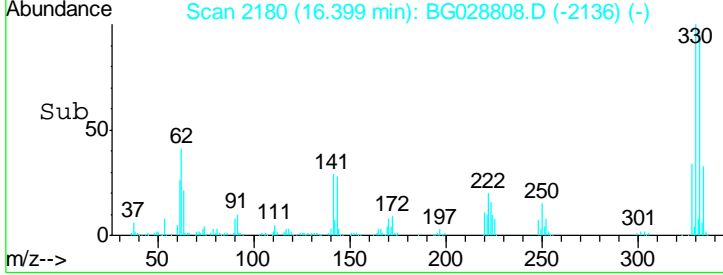
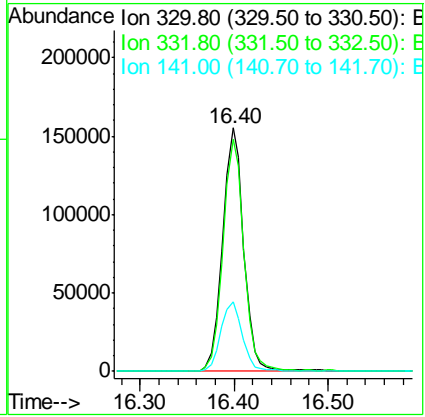
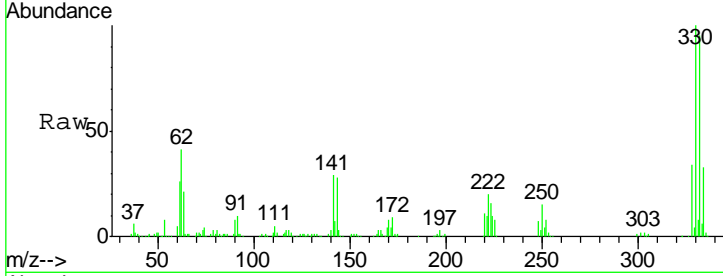




#41
 2,4,6-Tribromophenol
 Concen: 156.07 ng
 RT: 16.40 min Scan# 2180
 Delta R.T. -0.04 min
 Lab File: BG028808.D
 Acq: 18 Sep 2017 23:38

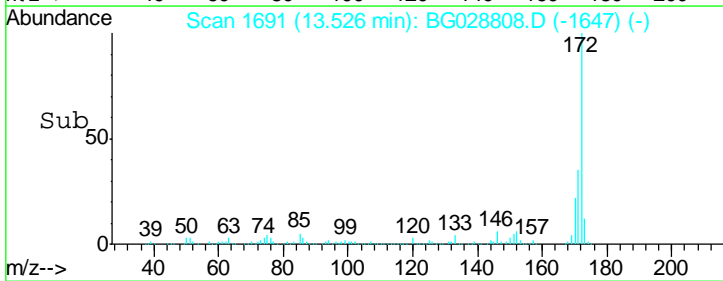
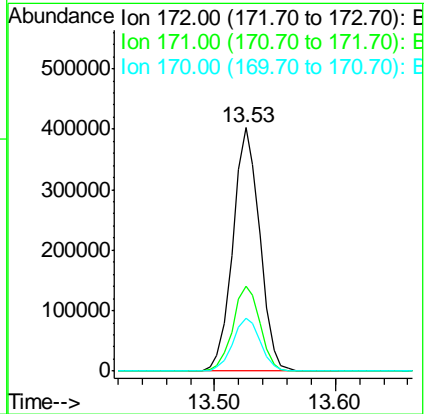
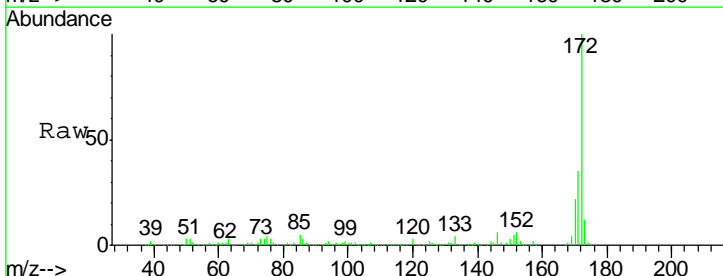
Instrument :
 BNA_G
 ClientSampled :

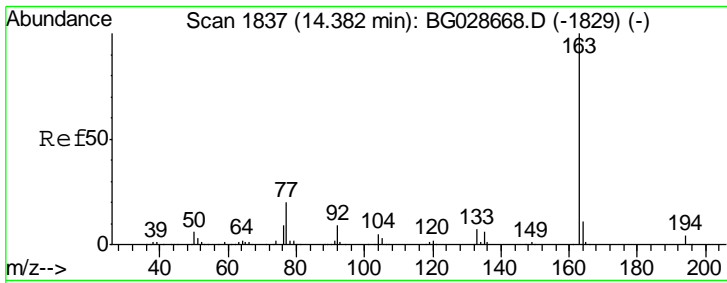
Tgt Ion	Resp	Lower	Upper
330	100		
332	94.6	77.3	115.9
141	29.3	32.1	48.1#



#44
 2-Fluorobiphenyl
 Concen: 88.21 ng
 RT: 13.53 min Scan# 1691
 Delta R.T. -0.04 min
 Lab File: BG028808.D
 Acq: 18 Sep 2017 23:38

Tgt Ion	Resp	Lower	Upper
172	100		
171	35.1	32.2	48.2
170	21.5	21.8	32.6#

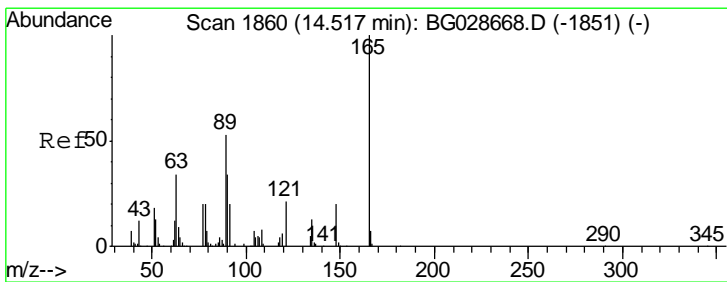
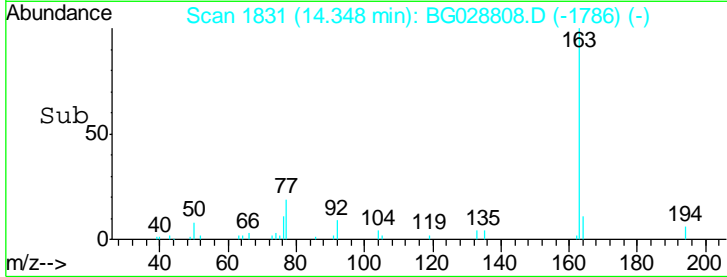
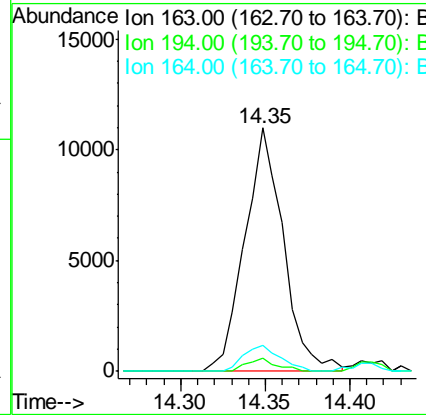
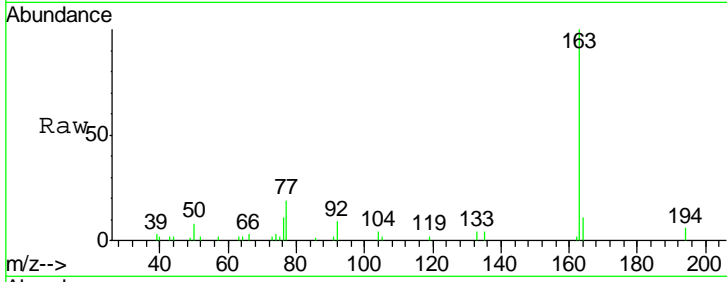




#49
 Dimethylphthalate
 Concen: 2.22 ng
 RT: 14.35 min Scan# 1831
 Delta R.T. -0.03 min
 Lab File: BG028808.D
 Acq: 18 Sep 2017 23:38

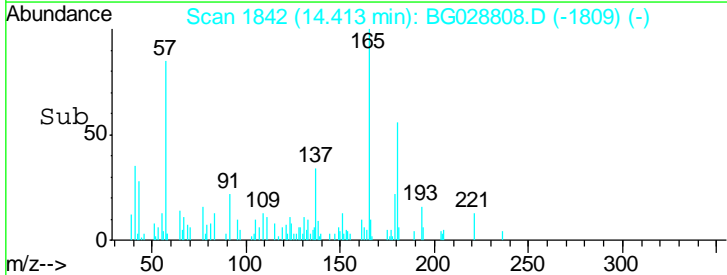
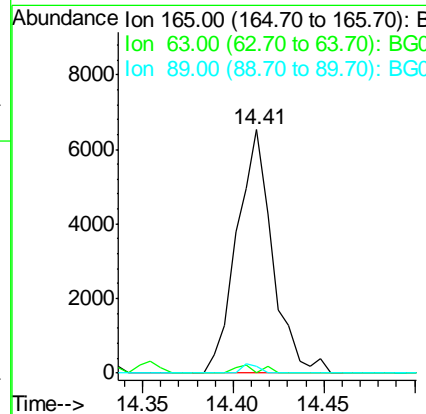
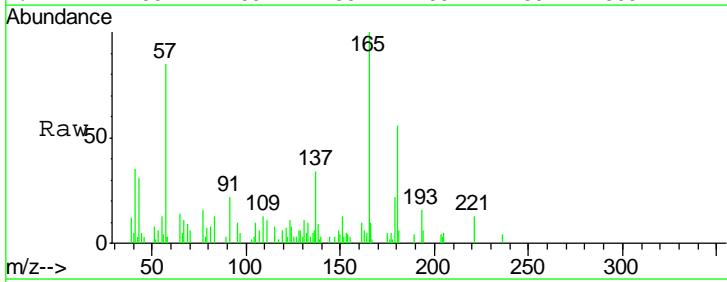
Instrument :
 BNA_G
 ClientSampled :

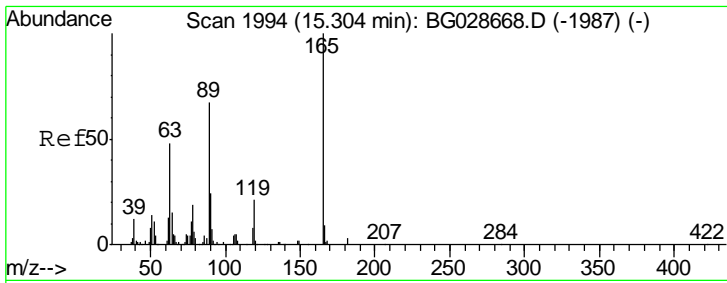
Tgt Ion	Resp	Lower	Upper
163	17509		
194	5.6	3.8	5.6
164	10.9	9.3	13.9



#50
 2,6-Dinitrotoluene
 Concen: 5.05 ng
 RT: 14.41 min Scan# 1842
 Delta R.T. -0.10 min
 Lab File: BG028808.D
 Acq: 18 Sep 2017 23:38

Tgt Ion	Resp	Lower	Upper
165	8872		
63	0.0	63.9	95.9#
89	2.7	58.6	88.0#

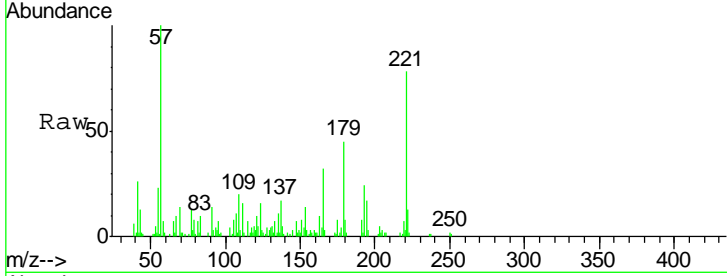




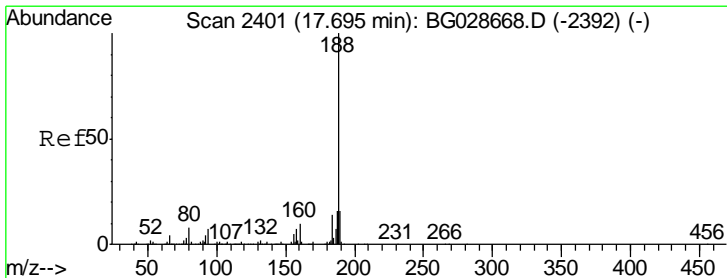
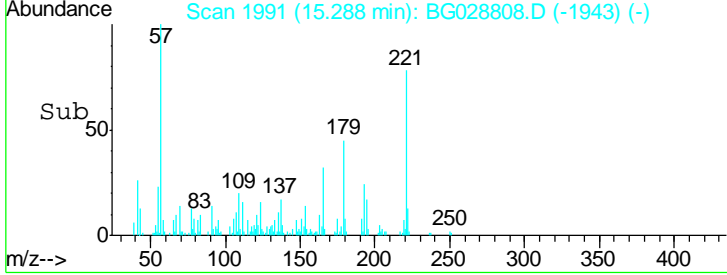
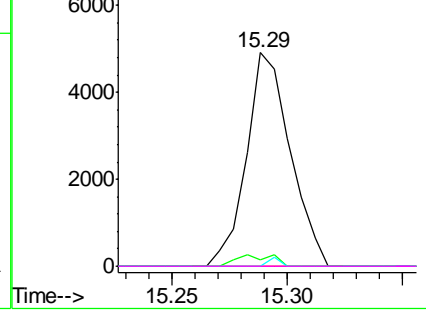
#56
 2,4-Dinitrotoluene
 Concen: 2.64 ng
 RT: 15.29 min Scan# 1991
 Delta R.T. -0.02 min
 Lab File: BG028808.D
 Acq: 18 Sep 2017 23:38

Instrument :
 BNA_G
 ClientSampled :

Tgt Ion	Resp	Lower	Upper
165	100		
63	3.1	44.0	66.0#
89	0.0	67.3	100.9#
182	0.0	3.8	5.6#

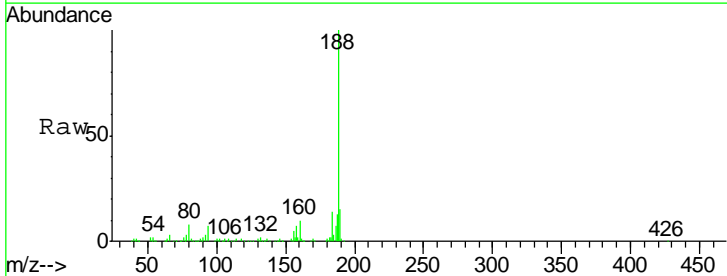


Abundance Ion 165.00 (164.70 to 165.70): E
 Ion 63.00 (62.70 to 63.70): BGC
 Ion 89.00 (88.70 to 89.70): BGC
 Ion 182.00 (181.70 to 182.70): E

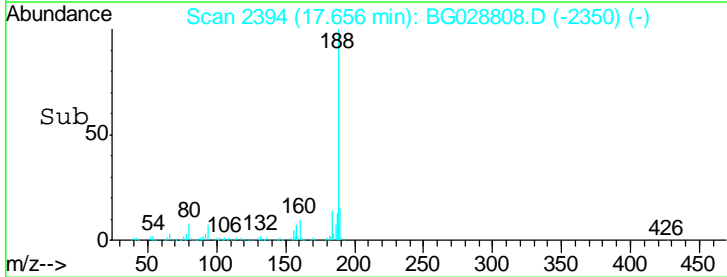
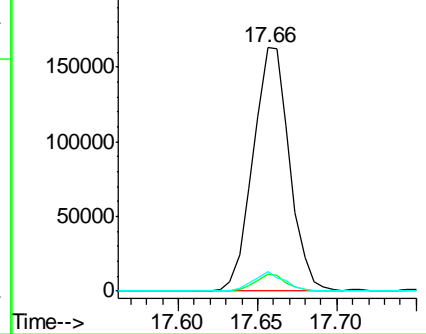


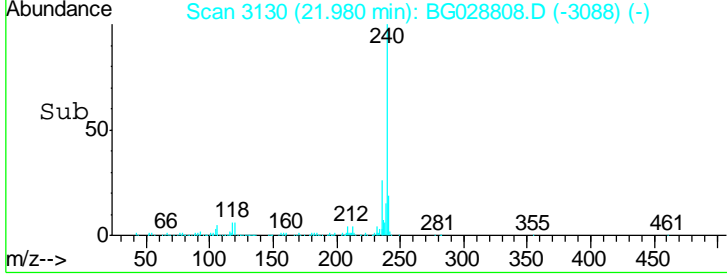
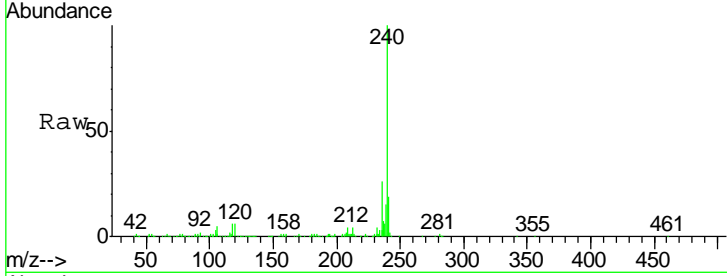
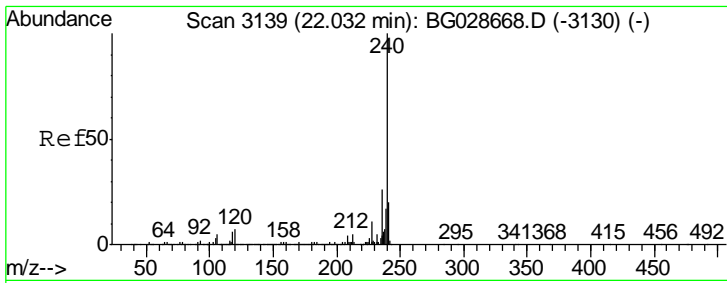
#63
 Phenanthrene-d10
 Concen: 20.00 ng
 RT: 17.66 min Scan# 2394
 Delta R.T. -0.04 min
 Lab File: BG028808.D
 Acq: 18 Sep 2017 23:38

Tgt Ion	Resp	Lower	Upper
188	100		
94	7.1	5.8	8.8
80	7.9	7.5	11.3



Abundance Ion 188.00 (187.70 to 188.70): E
 Ion 94.00 (93.70 to 94.70): BGC
 Ion 80.00 (79.70 to 80.70): BGC

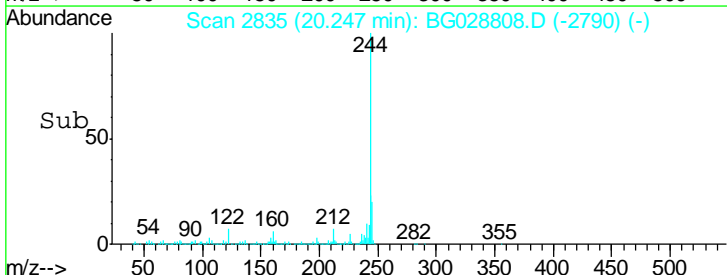
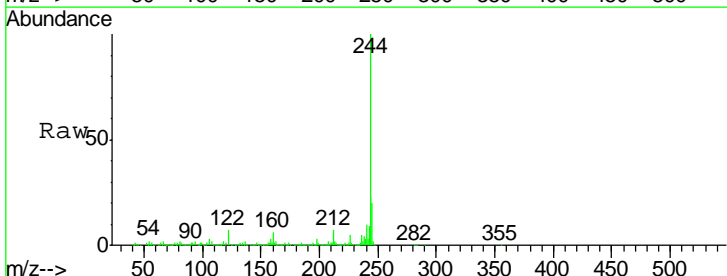
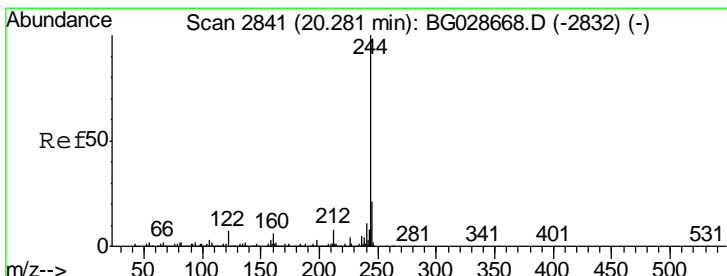
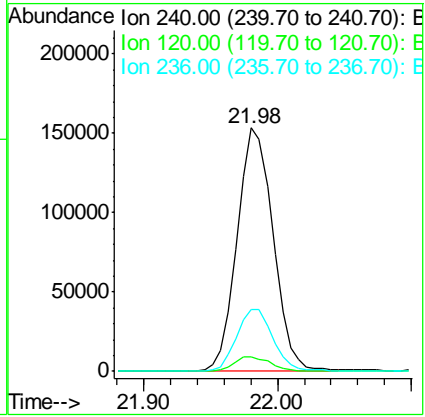




#75
 Chrysene-d12
 Concen: 20.00 ng
 RT: 21.98 min Scan# 3130
 Delta R.T. -0.05 min
 Lab File: BG028808.D
 Acq: 18 Sep 2017 23:38

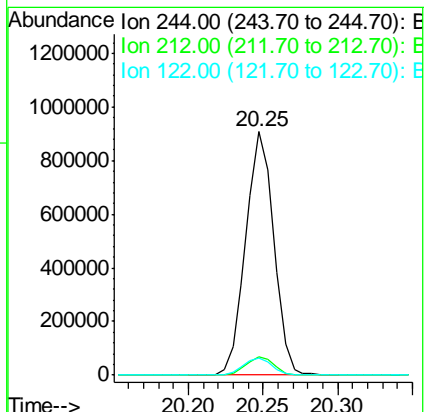
Instrument :
 BNA_G
 ClientSampled :

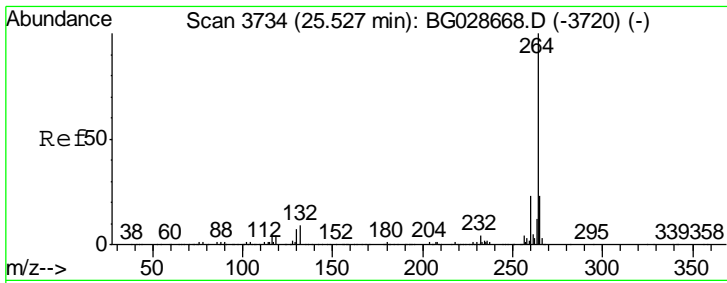
Tgt Ion	Ratio	Lower	Upper
240	100		
120	6.0	5.7	8.5
236	25.6	22.2	33.4



#78
 Terphenyl-d14
 Concen: 87.75 ng
 RT: 20.25 min Scan# 2835
 Delta R.T. -0.03 min
 Lab File: BG028808.D
 Acq: 18 Sep 2017 23:38

Tgt Ion	Ratio	Lower	Upper
244	100		
212	7.5	10.0	15.0#
122	7.2	8.6	12.8#





#86
 Perylene-d12
 Concen: 20.00 ng
 RT: 25.45 min Scan# 3721
 Delta R.T. -0.07 min
 Lab File: BG028808.D
 Acq: 18 Sep 2017 23:38

Instrument :
 BNA_G
 ClientSampled :

Tot Ion: 264 Resp: 295022

Ion	Ratio	Lower	Upper
264	100		
260	22.5	21.8	32.8
265	23.4	18.2	27.4

