

Data Path : Z:\HPCHEM1\BNA G\DATA\BG091817\
 Data File : BG028818.D
 Acq On : 19 Sep 2017 6:21
 Operator : SJ/JU
 Sample : I5265-11
 Misc :
 ALS Vial : 26 Sample Multiplier: 1

Instrument :
 BNA_G
 ClientSampleId :
 TP-17D68

Quant Time: Sep 19 08:01:29 2017
 Quant Method : Z:\HPCHEM1\BNA G\METHODS\8270-BG091217.M
 Quant Title : ASP BNA STANDARDS FOR 5 POINT CALIBRATION
 QLast Update : Tue Sep 12 16:57:11 2017
 Response via : Initial Calibration

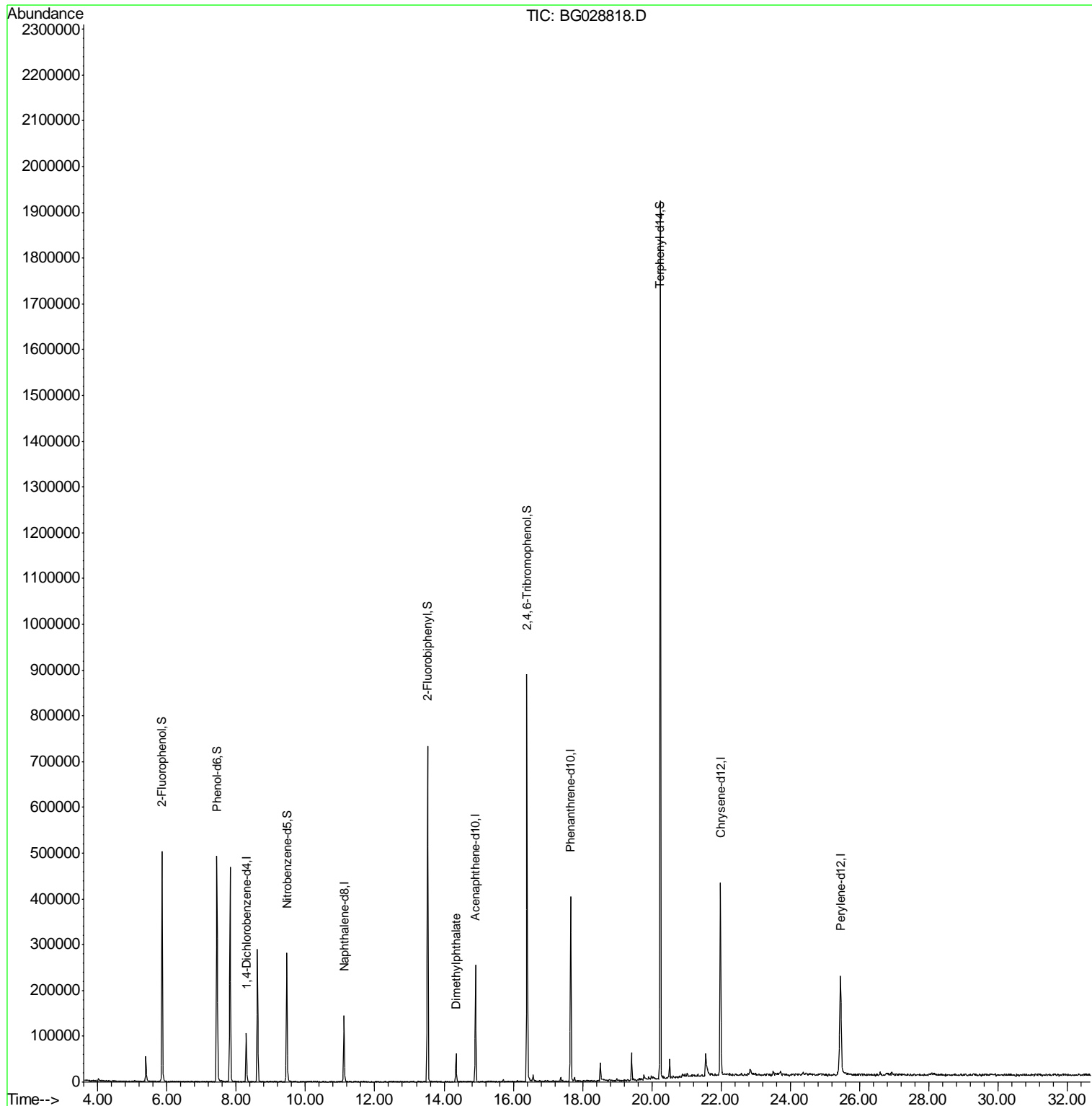
Internal Standards	R.T.	QIon	Response	Conc	Units	Dev(Min)
1) 1,4-Dichlorobenzene-d4	8.29	152	27883	20.00	ng	-0.04
21) Naphthalene-d8	11.11	136	119490	20.00	ng	-0.04
38) Acenaphthene-d10	14.91	164	92108	20.00	ng	-0.04
63) Phenanthrene-d10	17.66	188	262149	20.00	ng	-0.04
75) Chrysene-d12	21.98	240	285132	20.00	ng	-0.05
86) Perylene-d12	25.45	264	299523	20.00	ng	-0.08
System Monitoring Compounds						
5) 2-Fluorophenol	5.86	112	214365	126.86	ng	-0.05
7) Phenol-d6	7.44	99	302930	119.06	ng	-0.05
23) Nitrobenzene-d5	9.46	82	180722	72.35	ng	-0.05
41) 2,4,6-Tribromophenol	16.40	330	193622	127.10	ng	-0.04
44) 2-Fluorobiphenyl	13.53	172	408816	59.18	ng	-0.04
78) Terphenyl-d14	20.24	244	921011	68.88	ng	-0.04
Target Compounds						
49) Dimethylphthalate	14.35	163	45667	5.913	ng	Qvalue # 95

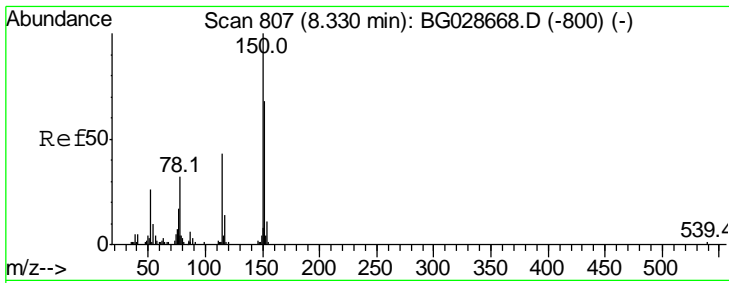
(#) = qualifier out of range (m) = manual integration (+) = signals summed

Data Path : Z:\HPCHEM1\BNA G\DATA\BG091817\
 Data File : BG028818.D
 Acq On : 19 Sep 2017 6:21
 Operator : SJ/JU
 Sample : I5265-11
 Misc :
 ALS Vial : 26 Sample Multiplier: 1

Instrument :
 BNA_G
 ClientSampleId :
 TP-17D68

Quant Time: Sep 19 08:01:29 2017
 Quant Method : Z:\HPCHEM1\BNA G\METHODS\8270-BG091217.M
 Quant Title : ASP BNA STANDARDS FOR 5 POINT CALIBRATION
 QLast Update : Tue Sep 12 16:57:11 2017
 Response via : Initial Calibration

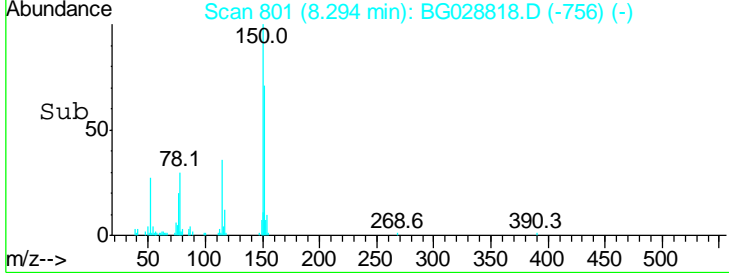
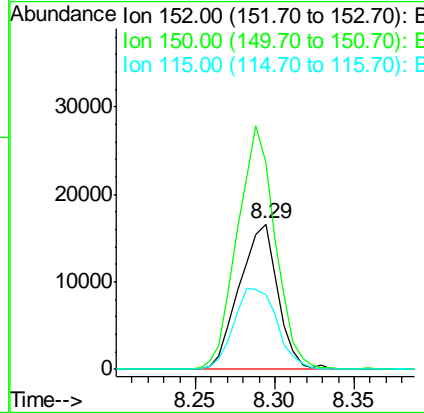
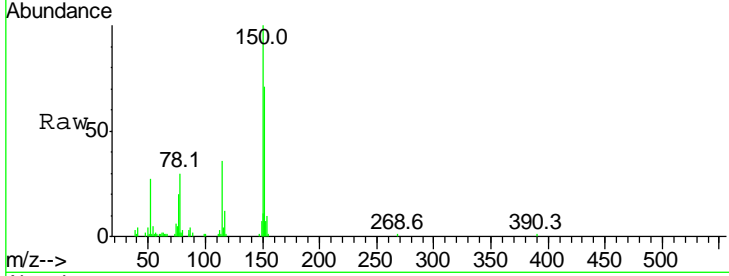




#1
 1,4-Dichlorobenzene-d4
 Concen: 20.000 ng
 RT: 8.29 min Scan# 801
 Delta R.T. -0.04 min
 Lab File: BG028818.D
 Acq: 19 Sep 2017 6:21

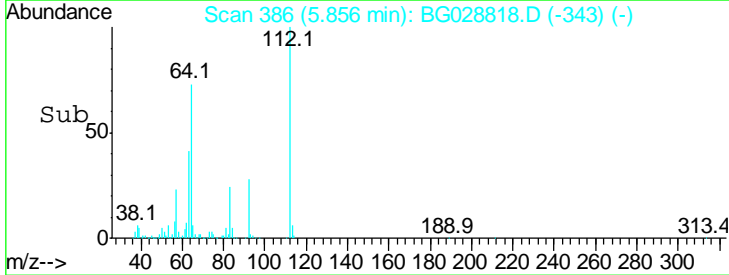
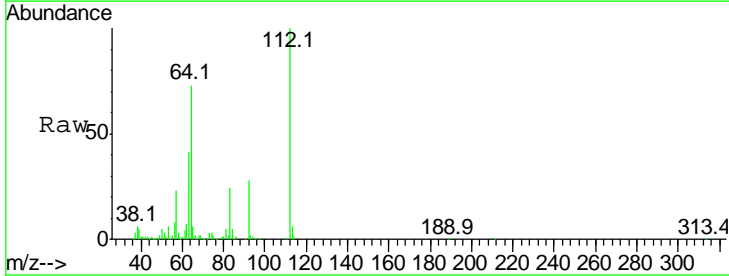
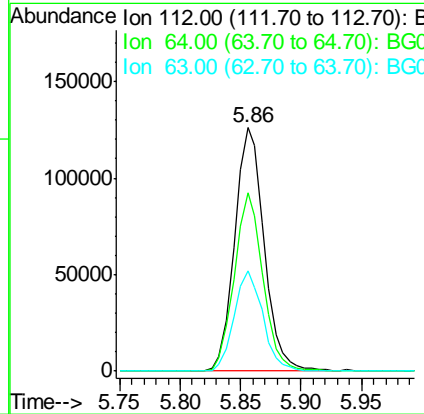
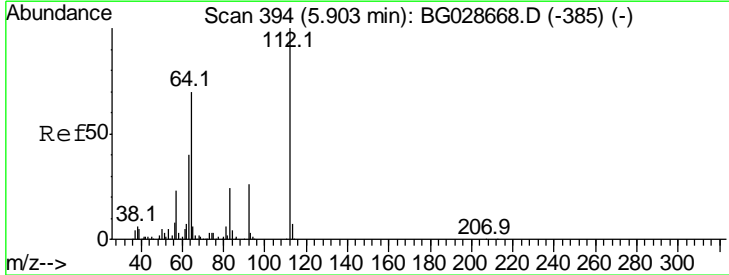
Instrument :
 BNA_G
ClientSampleId :
 TP-17D68

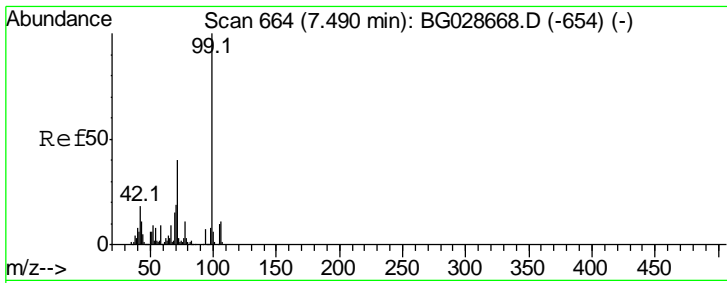
Tgt Ion	Resp	Lower	Upper
152	100		
150	141.8	114.0	171.0
115	51.5	48.1	72.1



#5
 2-Fluorophenol
 Concen: 126.856 ng
 RT: 5.86 min Scan# 386
 Delta R.T. -0.05 min
 Lab File: BG028818.D
 Acq: 19 Sep 2017 6:21

Tgt Ion	Resp	Lower	Upper
112	100		
64	73.5	61.8	92.6
63	41.3	37.2	55.8

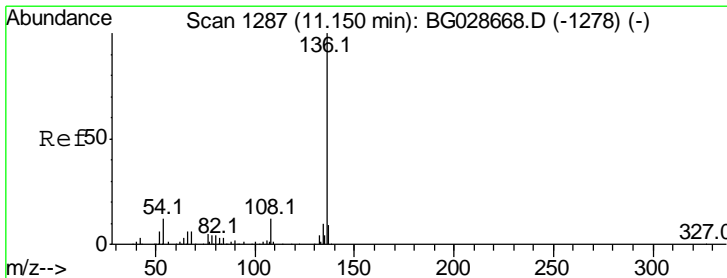
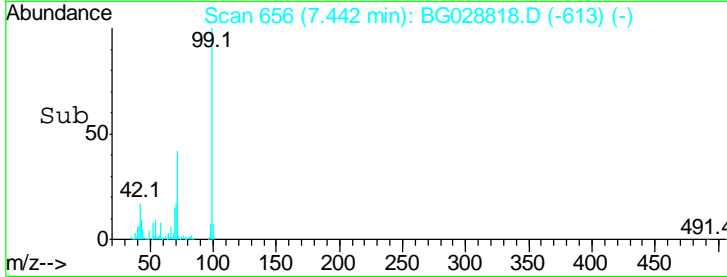
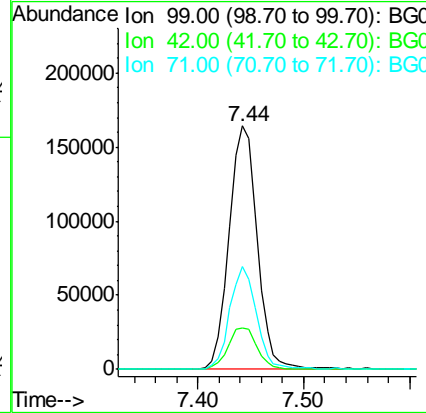
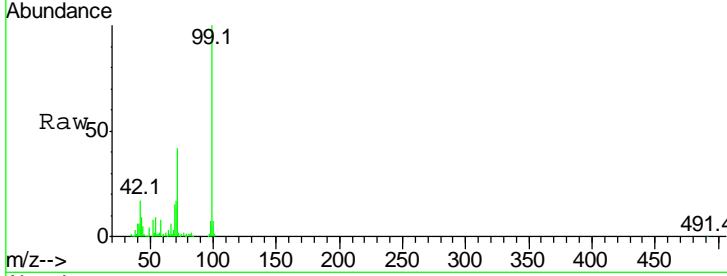




#7
 Phenol-d6
 Concen: 119.065 ng
 RT: 7.44 min Scan# 656
 Delta R.T. -0.05 min
 Lab File: BG028818.D
 Acq: 19 Sep 2017 6:21

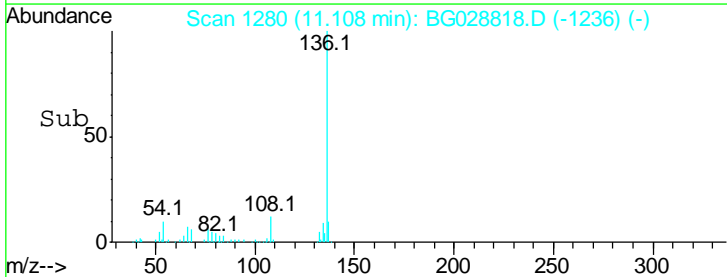
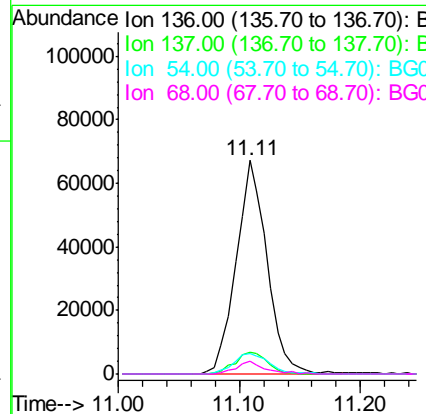
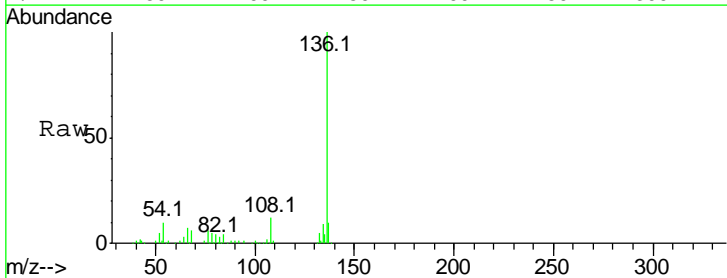
Instrument :
 BNA_G
 ClientSampled :
 TP-17D68

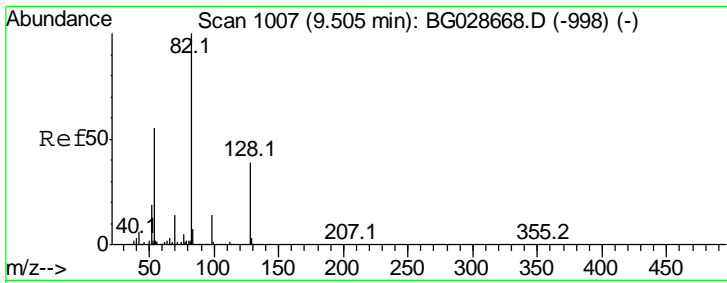
Tgt Ion	Resp	Lower	Upper
99	302930		
99	100		
42	16.8	20.5	30.7#
71	42.2	37.6	56.4



#21
 Naphthalene-d8
 Concen: 20.000 ng
 RT: 11.11 min Scan# 1280
 Delta R.T. -0.04 min
 Lab File: BG028818.D
 Acq: 19 Sep 2017 6:21

Tgt Ion	Resp	Lower	Upper
136	119490		
136	100		
137	10.1	8.9	13.3
54	9.8	9.3	13.9
68	5.9	5.1	7.7

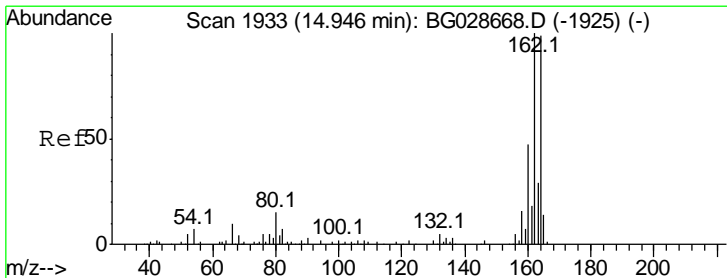
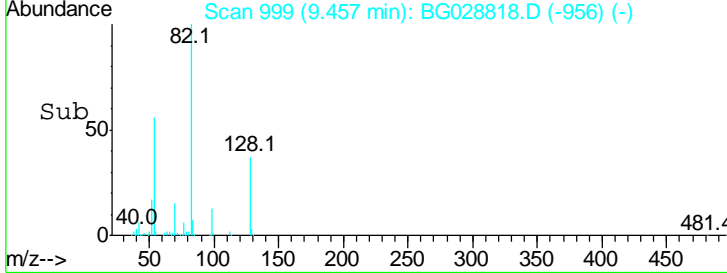
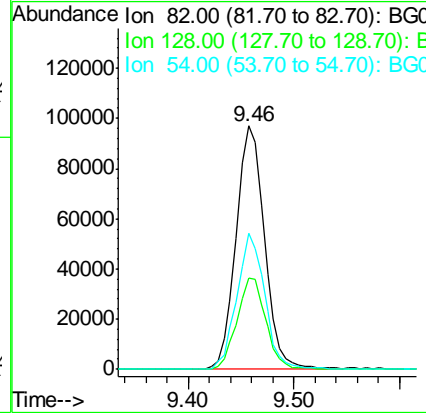
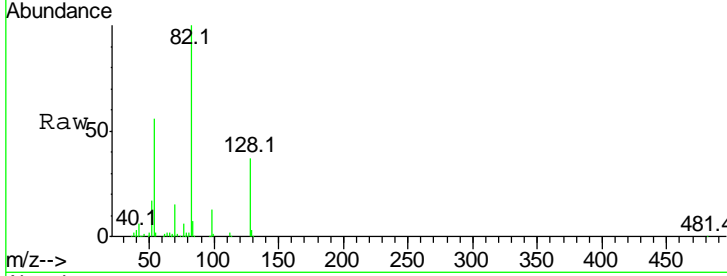




#23
 Nitrobenzene-d5
 Concen: 72.351 ng
 RT: 9.46 min Scan# 999
 Delta R.T. -0.05 min
 Lab File: BG028818.D
 Acq: 19 Sep 2017 6:21

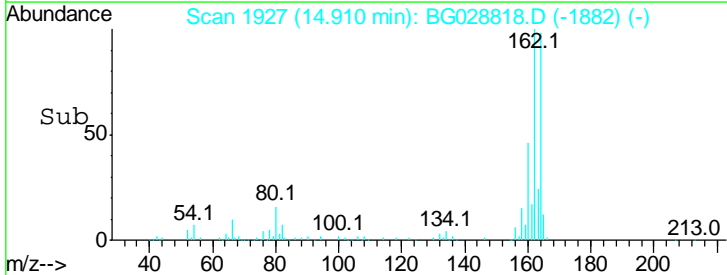
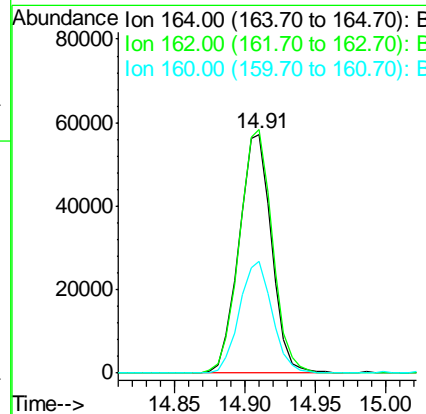
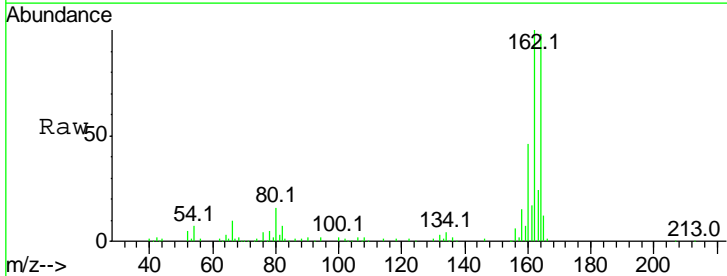
Instrument :
 BNA_G
 ClientSampled :
 TP-17D68

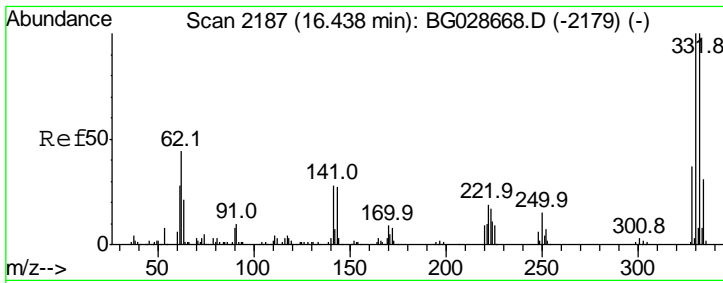
Tgt Ion	Resp	Lower	Upper
82	180722		
82	100		
128	37.5	26.4	39.6
54	55.9	49.4	74.2



#38
 Acenaphthene-d10
 Concen: 20.000 ng
 RT: 14.91 min Scan# 1927
 Delta R.T. -0.04 min
 Lab File: BG028818.D
 Acq: 19 Sep 2017 6:21

Tgt Ion	Resp	Lower	Upper
164	92108		
164	100		
162	101.9	85.1	127.7
160	47.0	34.7	52.1

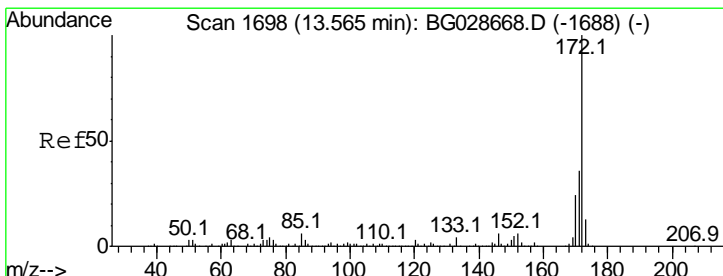
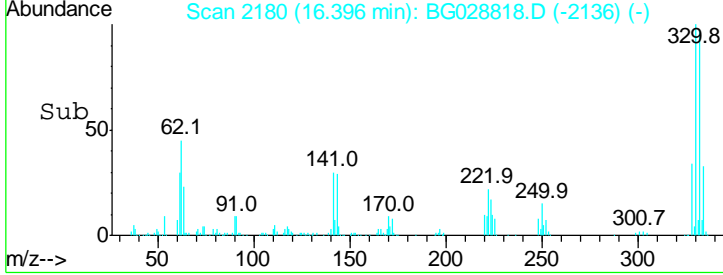
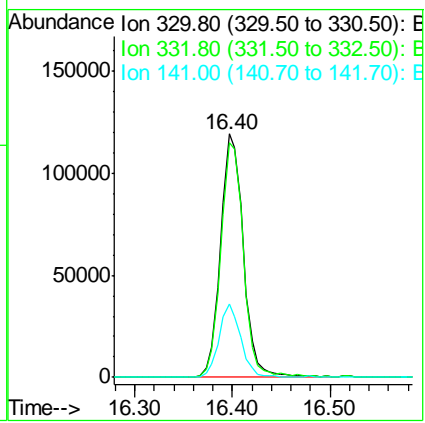
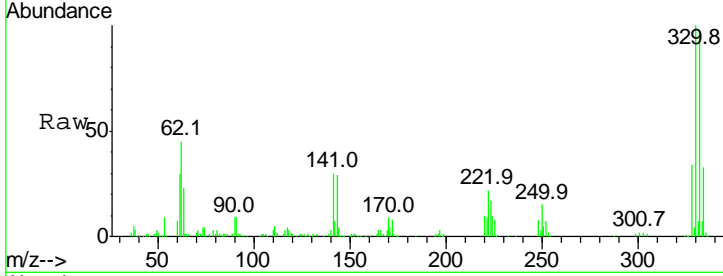




#41
 2,4,6-Tribromophenol
 Concen: 127.098 ng
 RT: 16.40 min Scan# 2180
 Delta R.T. -0.04 min
 Lab File: BG028818.D
 Acq: 19 Sep 2017 6:21

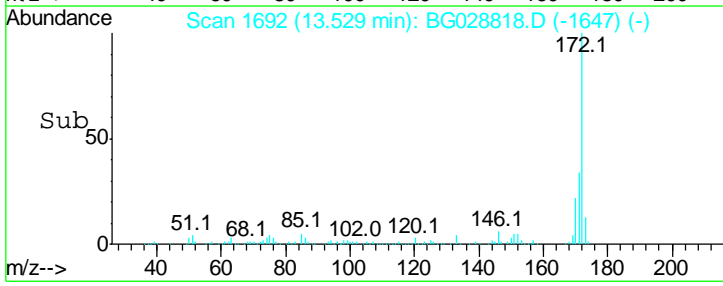
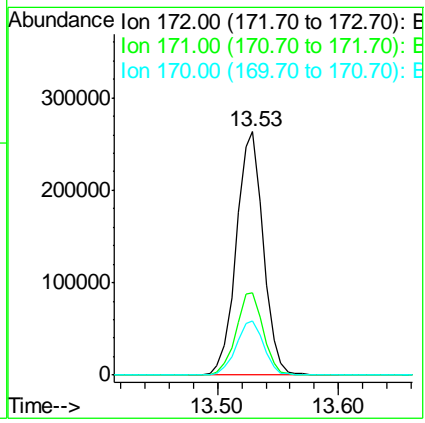
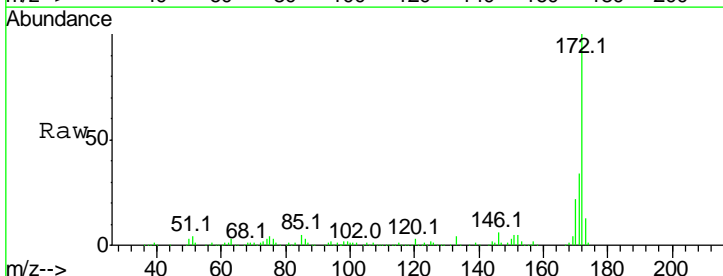
Instrument :
 BNA_G
 ClientSampled :
 TP-17D68

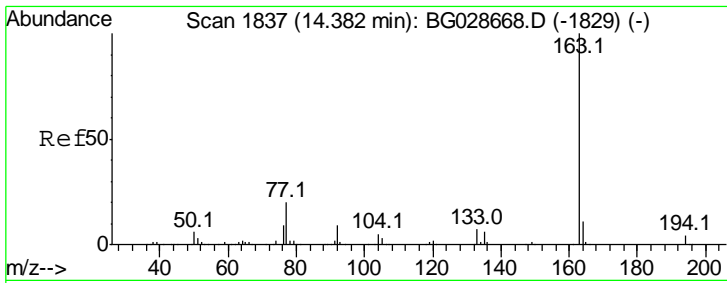
Tgt Ion	Resp	Lower	Upper
330	100		
332	96.2	77.3	115.9
141	28.9	32.1	48.1#



#44
 2-Fluorobiphenyl
 Concen: 59.183 ng
 RT: 13.53 min Scan# 1692
 Delta R.T. -0.04 min
 Lab File: BG028818.D
 Acq: 19 Sep 2017 6:21

Tgt Ion	Resp	Lower	Upper
172	100		
171	33.8	32.2	48.2
170	22.0	21.8	32.6

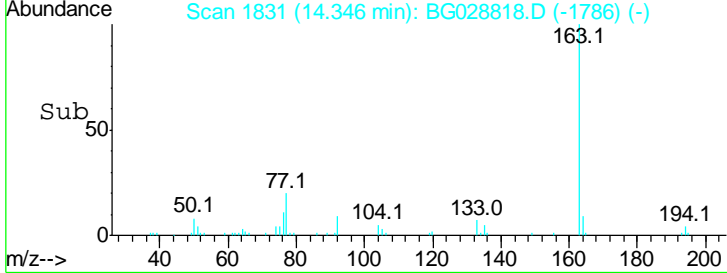
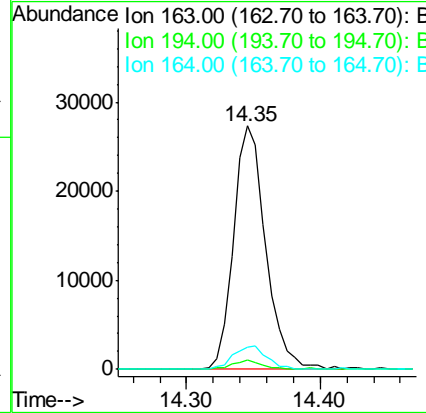
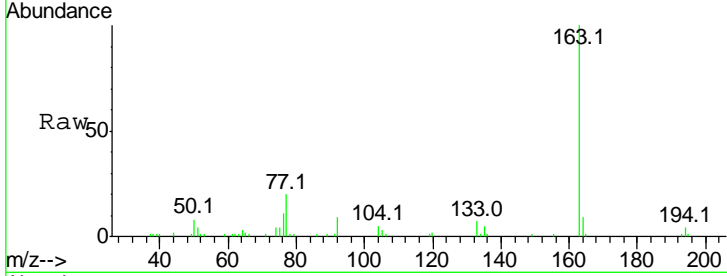




#49
 Dimethylphthalate
 Concen: 5.913 ng
 RT: 14.35 min Scan# 1831
 Delta R.T. -0.04 min
 Lab File: BG028818.D
 Acq: 19 Sep 2017 6:21

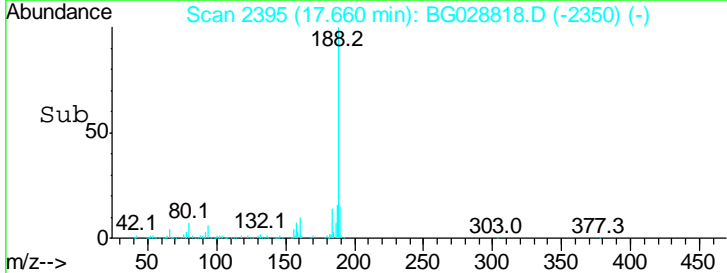
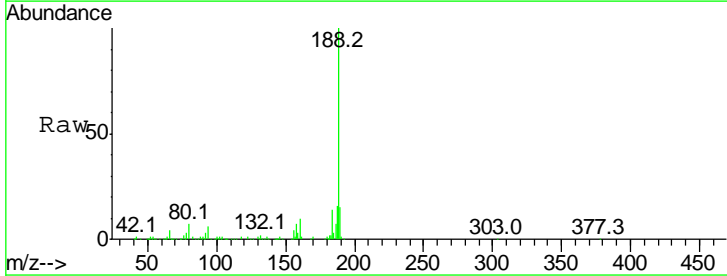
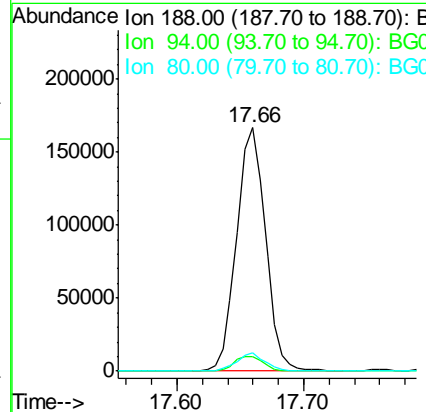
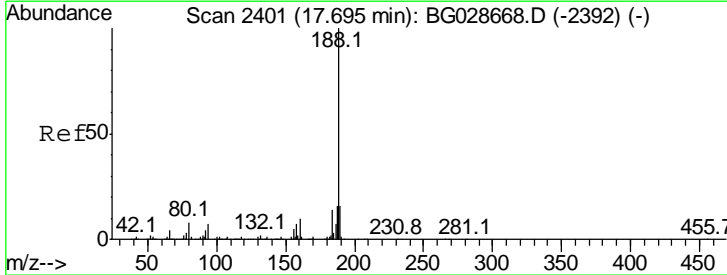
Instrument :
 BNA_G
ClientSampled :
 TP-17D68

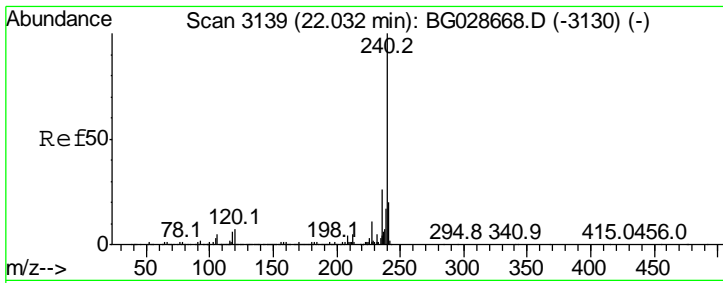
Tgt Ion	Resp	Lower	Upper
163	100		
194	3.7	3.8	5.6#
164	9.3	9.3	13.9#



#63
 Phenanthrene-d10
 Concen: 20.000 ng
 RT: 17.66 min Scan# 2395
 Delta R.T. -0.04 min
 Lab File: BG028818.D
 Acq: 19 Sep 2017 6:21

Tgt Ion	Resp	Lower	Upper
188	100		
94	6.0	5.8	8.8
80	7.5	7.5	11.3#

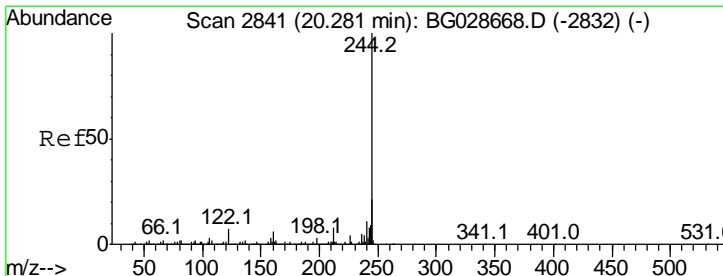
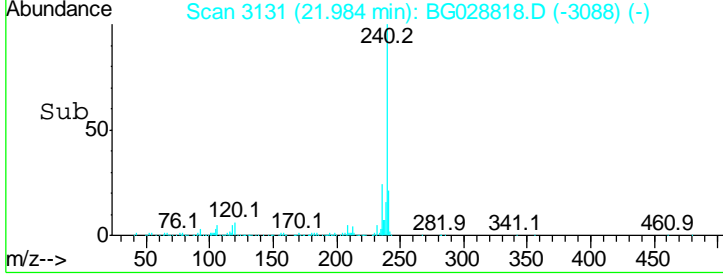
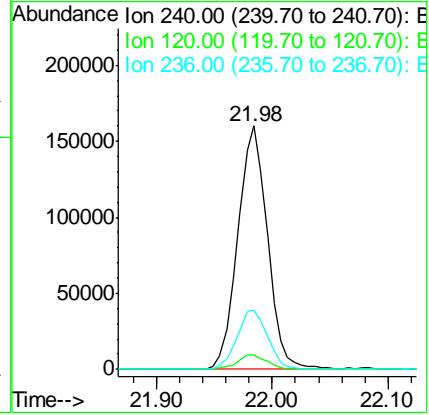
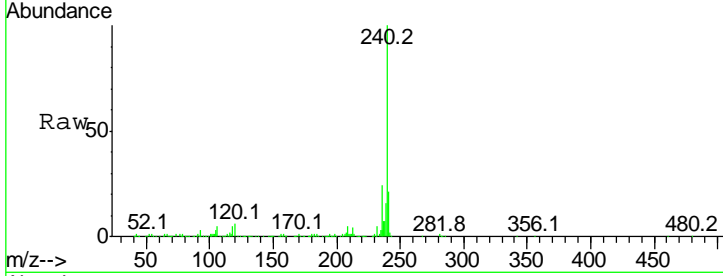




#75
 Chrysene-d12
 Concen: 20.000 ng
 RT: 21.98 min Scan# 3131
 Delta R.T. -0.05 min
 Lab File: BG028818.D
 Acq: 19 Sep 2017 6:21

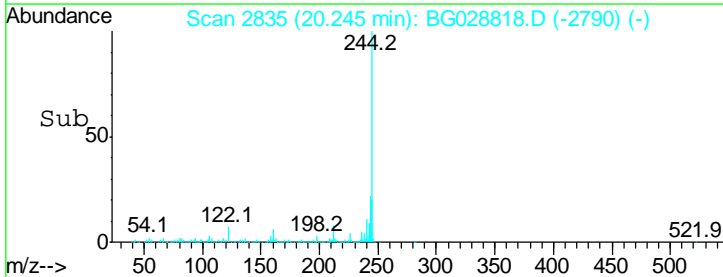
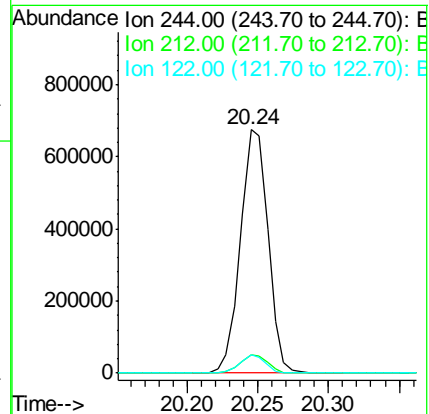
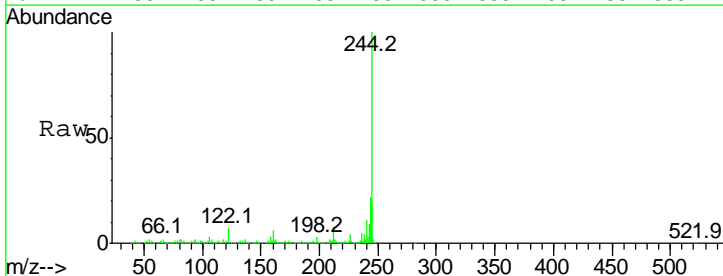
Instrument :
 BNA_G
ClientSampled :
 TP-17D68

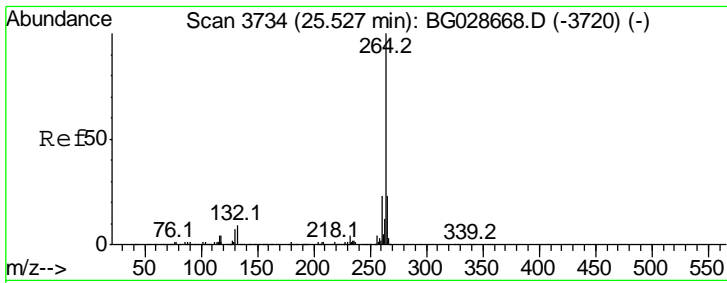
Tgt Ion	Ratio	Lower	Upper
240	100		
120	6.2	5.7	8.5
236	24.4	22.2	33.4



#78
 Terphenyl-d14
 Concen: 68.884 ng
 RT: 20.24 min Scan# 2835
 Delta R.T. -0.04 min
 Lab File: BG028818.D
 Acq: 19 Sep 2017 6:21

Tgt Ion	Ratio	Lower	Upper
244	100		
212	7.5	10.0	15.0#
122	7.3	8.6	12.8#





#86
 Perylene-d12
 Concen: 20.000 ng
 RT: 25.45 min Scan# 3721
 Delta R.T. -0.08 min
 Lab File: BG028818.D
 Acq: 19 Sep 2017 6:21

Instrument :
 BNA_G
ClientSampled :
 TP-17D68

Tot Ion	Ion	Ratio	Lower	Upper
299523	264	100		
	260	23.0	21.8	32.8
	265	22.4	18.2	27.4

