

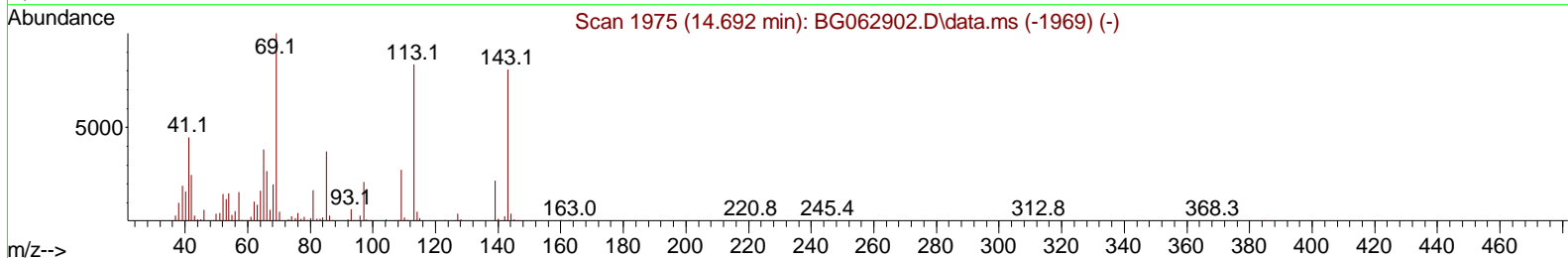
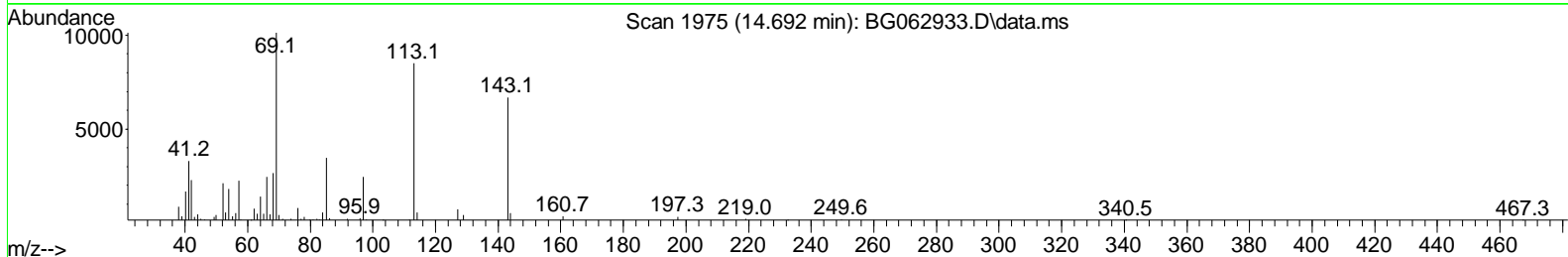
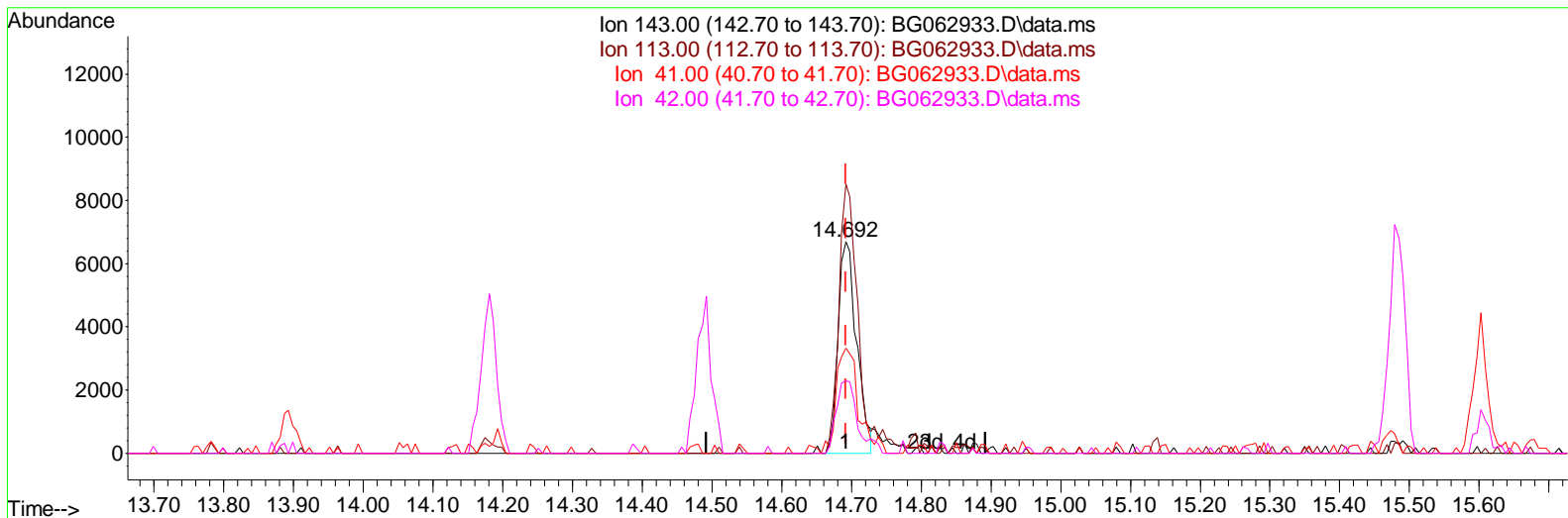
Data Path : Z:\svoasrv\HPCHEM1\BNA_G\Data\BG091824\
 Data File : BG062933.D
 Acq On : 19 Sep 2024 7:36
 Operator : JU/RC
 Sample : P3997-12
 Misc :
 ALS Vial : 25 Sample Multiplier: 1

Instrument :
 BNA_G
 ClientSampleId :
 C0AT1

Manual Integrations APPROVED

Reviewed By : Jagrut Upadhyay 09/19/2024
 Supervised By : mohammad ahmed 09/22/2024

Quant Time: Sep 19 08:10:07 2024
 Quant Method : Z:\svoasrv\HPCHEM1\BNA_G\Methods\SFAM-EPA-BG091724.MA.M
 Quant Title : SVOA CALIBRATION
 QLast Update : Wed Sep 18 00:45:18 2024
 Response via : Initial Calibration



TIC: BG062933.D\data.ms

(54) 4-Nitrophenol-d4 (S)

14.692min (-0.001) 6.34 ng/ul

response 12318

Ion	Exp%	Act%
143.00	100.00	100.00
113.00	101.50	127.12#
41.00	49.70	49.54
42.00	34.20	33.96

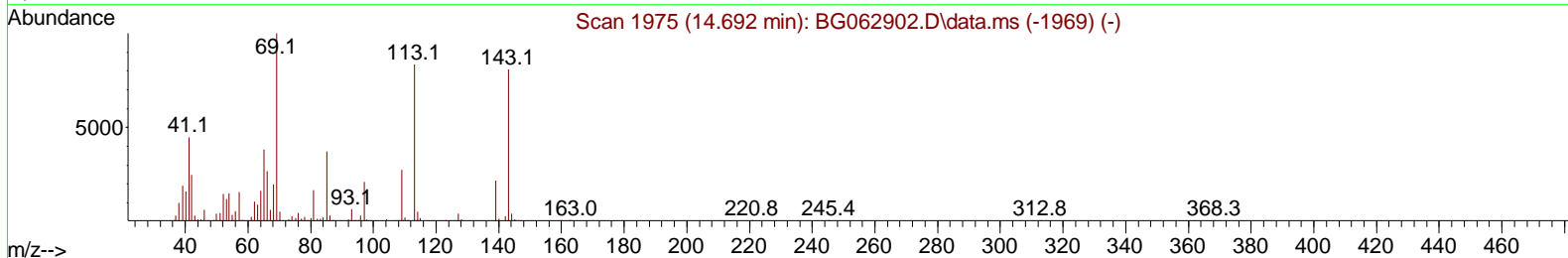
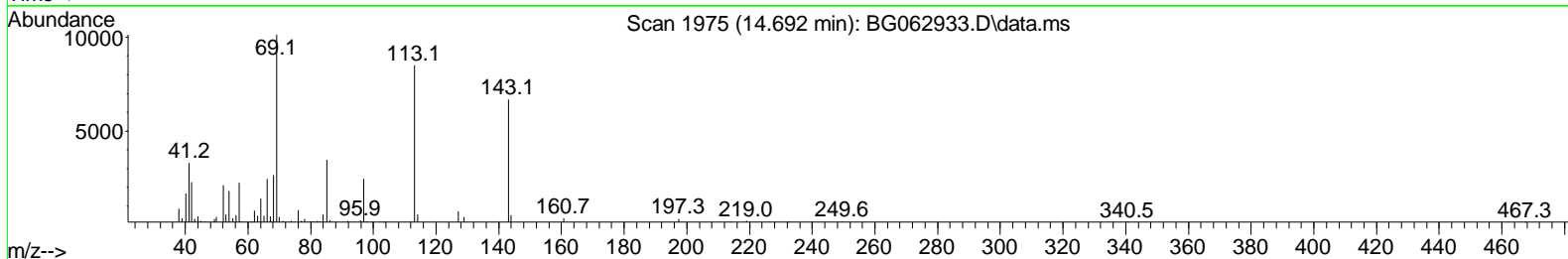
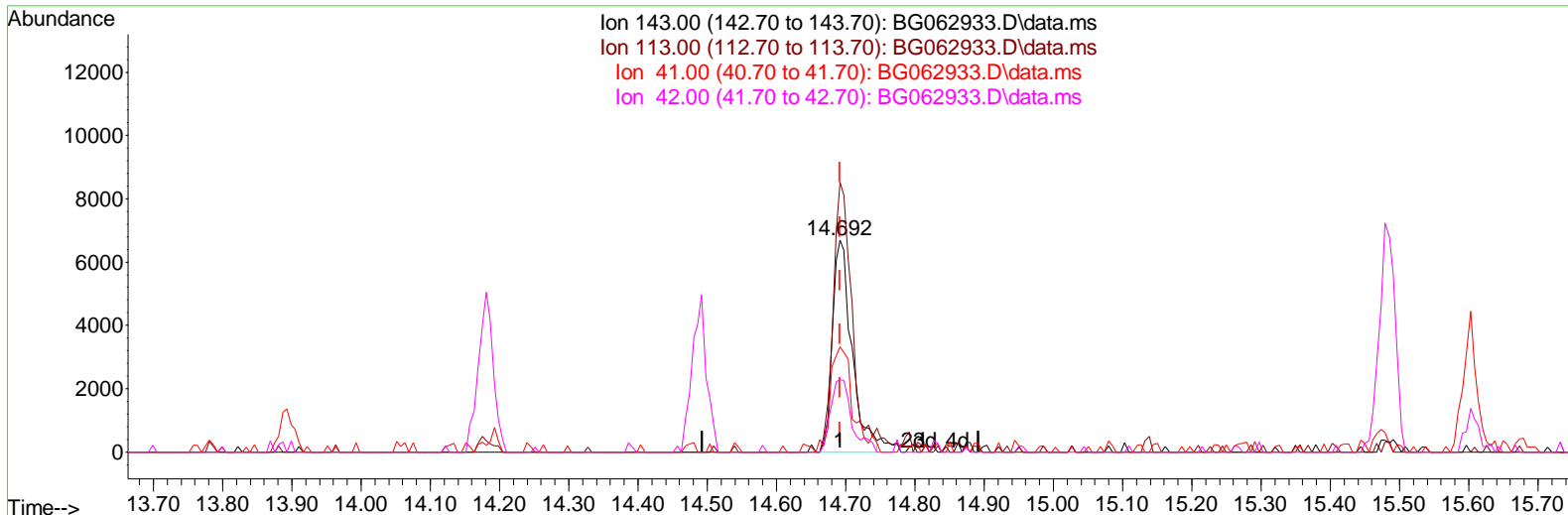
Data Path : Z:\svoasrv\HPCHEM1\BNA_G\Data\BG091824\
 Data File : BG062933.D
 Acq On : 19 Sep 2024 7:36
 Operator : JU/RC
 Sample : P3997-12
 Misc :
 ALS Vial : 25 Sample Multiplier: 1

Instrument :
 BNA_G
ClientSampleId :
 C0AT1

Manual IntegrationsAPPROVED

Reviewed By :Jagrut Upadhyay 09/19/2024
 Supervised By :mohammad ahmed 09/22/2024

Quant Time: Sep 19 08:10:07 2024
 Quant Method : Z:\svoasrv\HPCHEM1\BNA_G\Methods\SFAM-EPA-BG091724.MA.M
 Quant Title : SVOA CALIBRATION
 QLast Update : Wed Sep 18 00:45:18 2024
 Response via : Initial Calibration



TIC: BG062933.D\data.ms

(54) 4-Nitrophenol-d4 (S)

14.692min (-0.001) 6.65 ng/ul m

response 12915

Ion	Exp%	Act%
143.00	100.00	100.00
113.00	101.50	127.12#
41.00	49.70	49.54
42.00	34.20	33.96

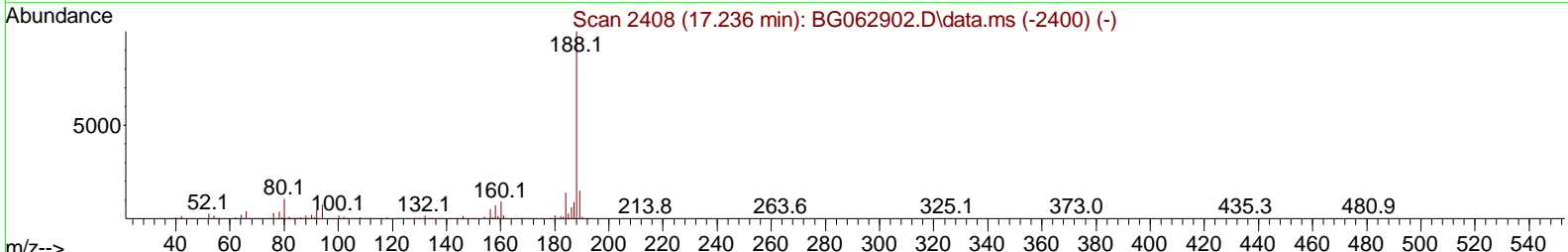
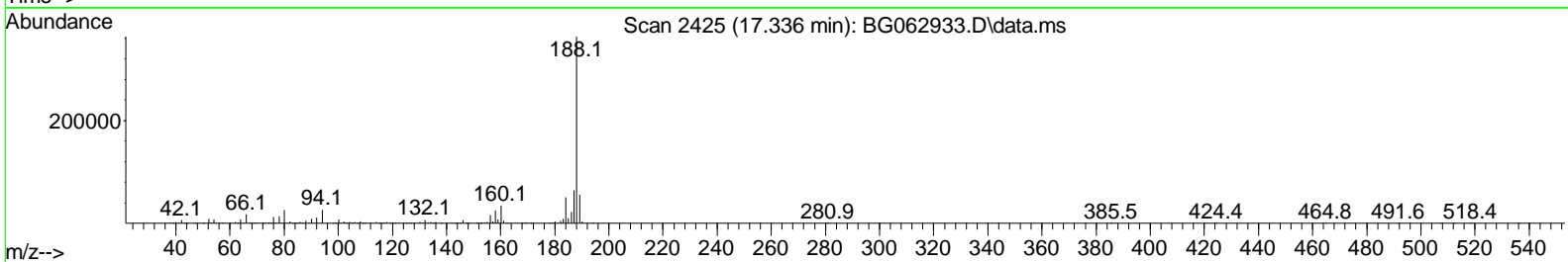
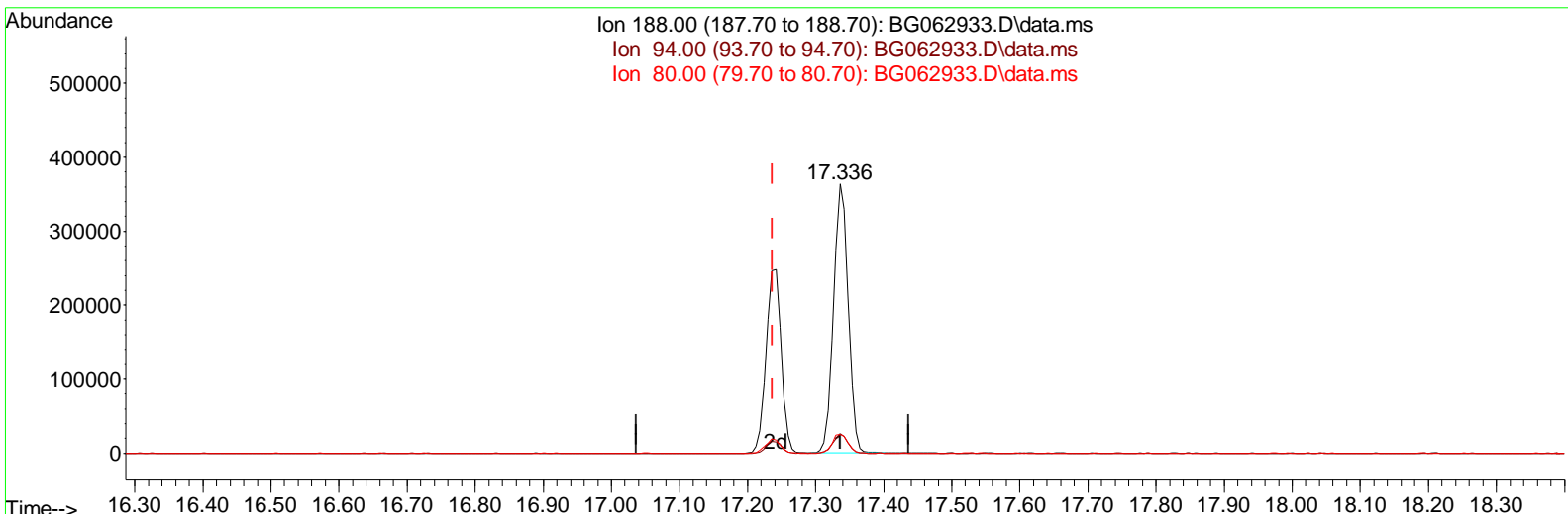
Data Path : Z:\svoasrv\HPCHEM1\BNA_G\Data\BG091824\
 Data File : BG062933.D
 Acq On : 19 Sep 2024 7:36
 Operator : JU/RC
 Sample : P3997-12
 Misc :
 ALS Vial : 25 Sample Multiplier: 1

Instrument :
 BNA_G
ClientSampleId :
 C0AT1

Manual Integrations APPROVED

Reviewed By : Jagrut Upadhyay 09/19/2024
 Supervised By : mohammad ahmed 09/22/2024

Quant Time: Sep 19 08:10:07 2024
 Quant Method : Z:\svoasrv\HPCHEM1\BNA_G\Methods\SFAM-EPA-BG091724.MA.M
 Quant Title : SVOA CALIBRATION
 QLast Update : Wed Sep 18 00:45:18 2024
 Response via : Initial Calibration



TIC: BG062933.D\data.ms

(64) Phenanthrene-d10 (I)

17.336min (+ 0.099) 20.00 ng/ul

response 541762

Ion	Exp%	Act%
188.00	100.00	100.00
94.00	8.20	7.18
80.00	8.70	7.00
0.00	0.00	0.00

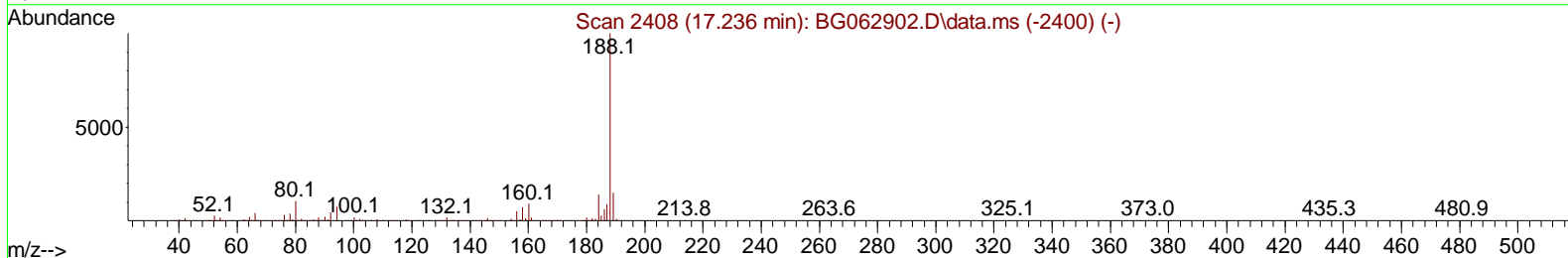
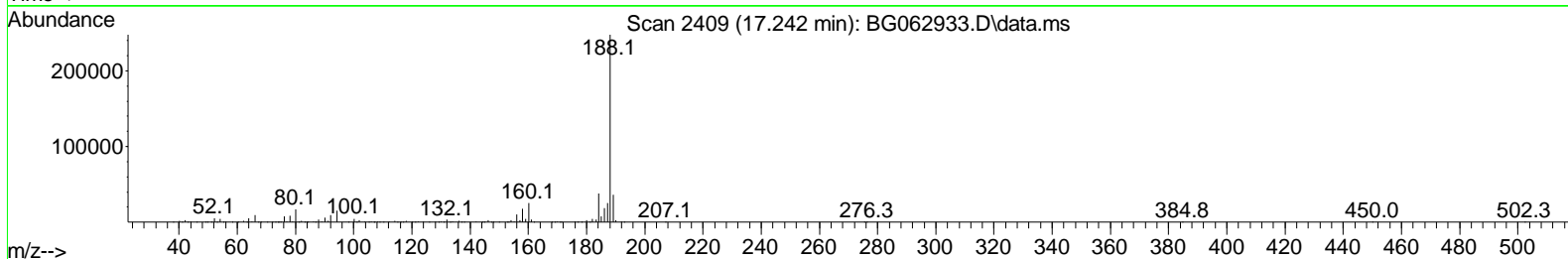
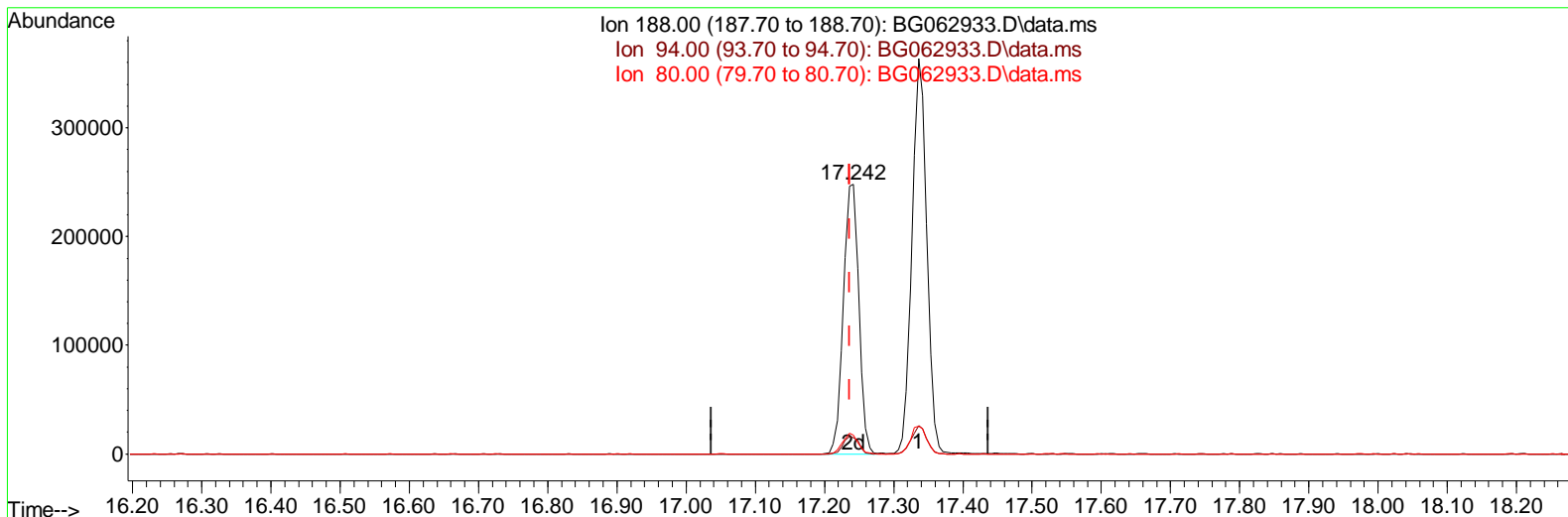
Data Path : Z:\svoasrv\HPCHEM1\BNA_G\Data\BG091824\
 Data File : BG062933.D
 Acq On : 19 Sep 2024 7: 36
 Operator : JU/RC
 Sample : P3997-12
 Misc :
 ALS Vial : 25 Sample Multiplier: 1

Instrument :
 BNA_G
ClientSampleId :
 C0AT1

Manual IntegrationsAPPROVED

Reviewed By :Jagrut Upadhyay 09/19/2024
 Supervised By :mohammad ahmed 09/22/2024

Quant Time: Sep 19 08:10:07 2024
 Quant Method : Z:\svoasrv\HPCHEM1\BNA_G\Methods\SFAM-EPA-BG091724.MA.M
 Quant Title : SVOA CALIBRATION
 QLast Update : Wed Sep 18 00:45:18 2024
 Response via : Initial Calibration



TIC: BG062933.D\data.ms

(64) Phenanthrene-d10 (I)

17.242min (+ 0.005) 20.00 ng/ul m

response 383361

Ion	Exp%	Act%
188.00	100.00	100.00
94.00	8.20	6.03#
80.00	8.70	6.97
0.00	0.00	0.00

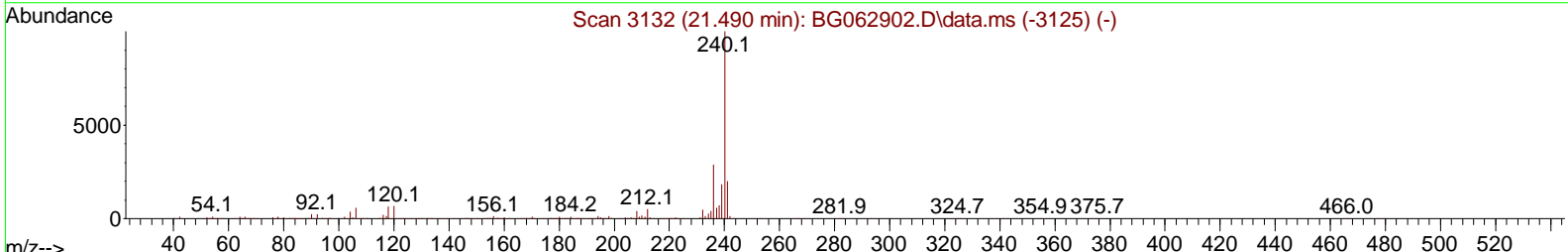
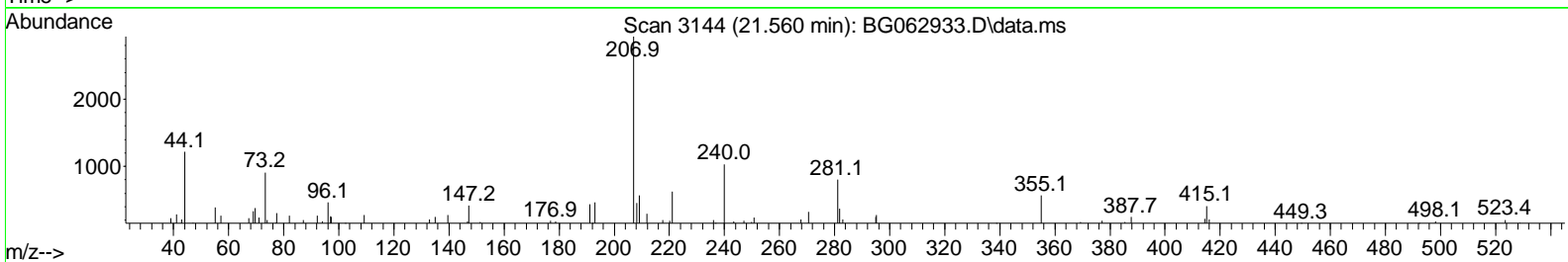
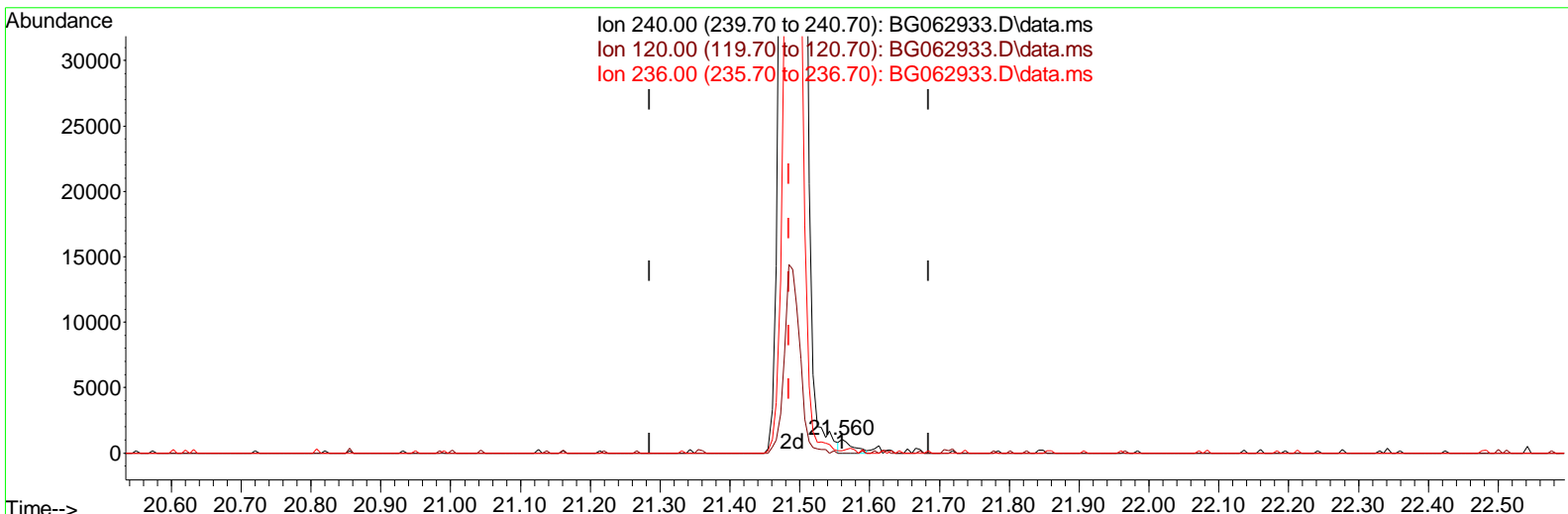
Data Path : Z:\svoasrv\HPCHEM1\BNA_G\Data\BG091824\
 Data File : BG062933.D
 Acq On : 19 Sep 2024 7:36
 Operator : JU/RC
 Sample : P3997-12
 Misc :
 ALS Vial : 25 Sample Multiplier: 1

Instrument :
 BNA_G
 ClientSampleId :
 C0AT1

Manual Integrations APPROVED

Reviewed By : Jagrut Upadhyay 09/19/2024
 Supervised By : mohammad ahmed 09/22/2024

Quant Time: Sep 19 08:11:43 2024
 Quant Method : Z:\svoasrv\HPCHEM1\BNA_G\Methods\SFAM-EPA-BG091724.MA.M
 Quant Title : SVOA CALIBRATION
 QLast Update : Wed Sep 18 00:45:18 2024
 Response via : Initial Calibration



TIC: BG062933.D\data.ms

(79) Chrysene-d12 (I)

21.560min (+ 0.075) 20.00 ng/ul

response 1296

Ion	Exp%	Act%
240.00	100.00	100.00
120.00	7.60	0.00#
236.00	26.60	33.91#
0.00	0.00	0.00

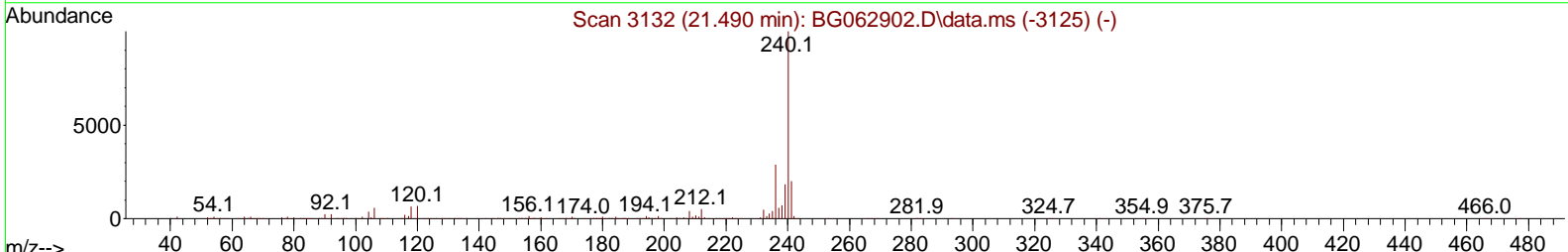
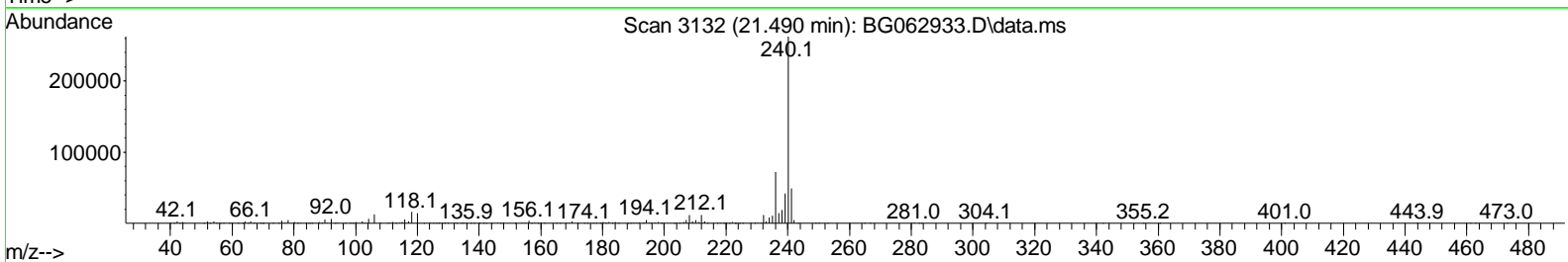
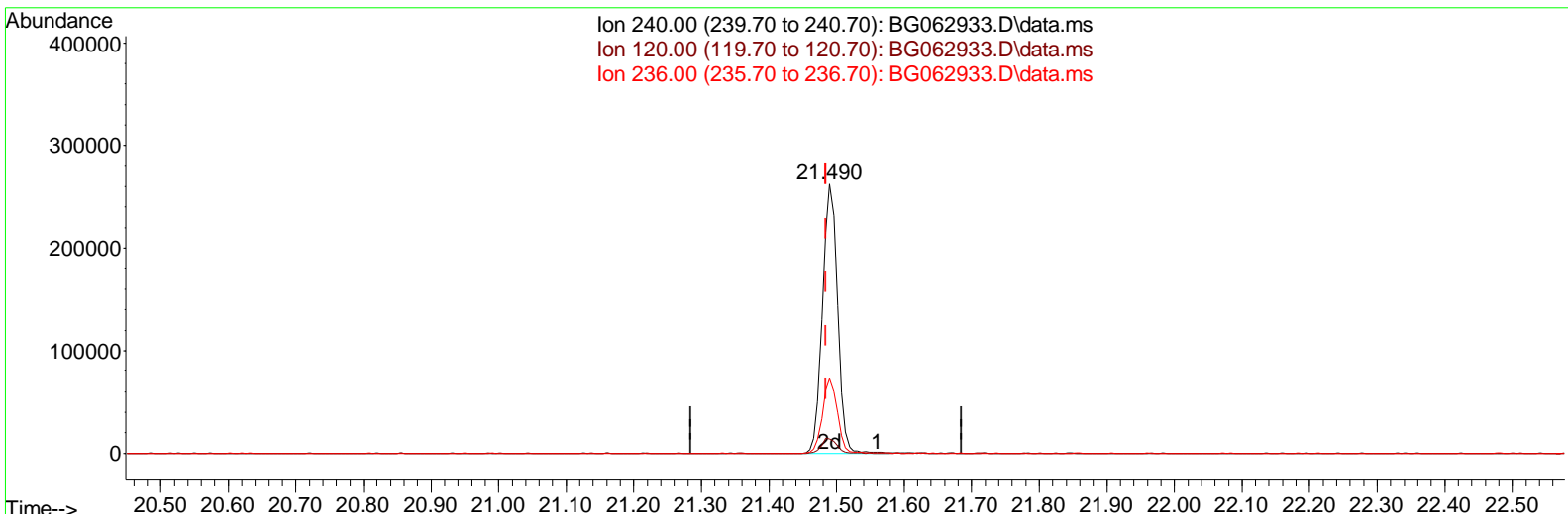
Data Path : Z:\svoasrv\HPCHEM1\BNA_G\Data\BG091824\
 Data File : BG062933.D
 Acq On : 19 Sep 2024 7:36
 Operator : JU/RC
 Sample : P3997-12
 Misc :
 ALS Vial : 25 Sample Multiplier: 1

Instrument :
 BNA_G
 ClientSampleId :
 C0AT1

Manual Integrations APPROVED

Reviewed By : Jagrut Upadhyay 09/19/2024
 Supervised By : mohammad ahmed 09/22/2024

Quant Time: Sep 19 08:11:43 2024
 Quant Method : Z:\svoasrv\HPCHEM1\BNA_G\Methods\SFAM-EPA-BG091724.MA.M
 Quant Title : SVOA CALIBRATION
 QLast Update : Wed Sep 18 00:45:18 2024
 Response via : Initial Calibration



TIC: BG062933.D\data.ms

(79) Chrysene-d12 (I)

21.490min (+ 0.005) 20.00 ng/ul m

response 404918

Ion	Exp%	Act%
240.00	100.00	100.00
120.00	7.60	5.35#
236.00	26.60	27.67
0.00	0.00	0.00

Data Path : Z:\svoasrv\HPCHEM1\BNA_G\Data\BG091824\
 Data File : BG062933.D
 Acq On : 19 Sep 2024 7:36
 Operator : JU/RC
 Sample : P3997-12
 Misc :
 ALS Vial : 25 Sample Multiplier: 1

Instrument :
 BNA_G
ClientSampleId :
 C0AT1

Manual Integrations APPROVED

Reviewed By : Jagrut Upadhyay 09/19/2024
 Supervised By : mohammad ahmed 09/22/2024

Quant Time: Sep 19 08:12:12 2024
 Quant Method : Z:\svoasrv\HPCHEM1\BNA_G\Methods\SFAM-EPA-BG091724.MA.M
 Quant Title : SVOA CALIBRATION
 QLast Update : Wed Sep 18 00:45:18 2024
 Response via : Initial Calibration

Compound	R.T.	QI on	Response	Conc	Units	Dev(Min)
Internal Standards						
1) 1,4-Dichlorobenzene-d4	7.853	152	47375	20.000	ng/ul	0.00
20) Naphthalene-d8	10.644	136	201329	20.000	ng/ul	# 0.00
38) Acenaphthene-d10	14.486	164	162946	20.000	ng/ul	0.00
64) Phenanthrene-d10	17.242	188	383361m	20.000	ng/ul	0.00
79) Chrysene-d12	21.490	240	404918m	20.000	ng/ul	0.00
88) Perylene-d12	24.533	264	467158	20.000	ng/ul	0.02
System Monitoring Compounds						
3) 1,4-Dioxane-d8	3.329	96	4446	2.749	ng/uL	0.00
4) Pyridine-d5	3.740	84	25813	5.879	ng/ul	0.00
7) Phenol-d5	7.024	99	37352	7.598	ng/ul	0.00
9) Bis-(2-Chloroethyl)eth...	7.189	67	73213	26.613	ng/ul	0.00
11) 2-Chlorophenol-d4	7.389	132	83301	25.810	ng/ul	0.00
15) 4-Methylphenol-d8	8.564	113	64295	17.854	ng/ul	0.00
21) Nitrobenzene-d5	9.010	128	43834	27.329	ng/ul	0.00
24) 2-Nitrophenol-d4	9.733	143	54619	30.017	ng/ul	0.00
28) 2,4-Dichlorophenol-d3	10.268	165	103637	27.451	ng/ul	0.00
31) 4-Chloroaniline-d4	10.779	131	103600	22.050	ng/ul	0.00
46) Dimethylphthalate-d6	13.893	166	353415	29.166	ng/ul	0.00
49) Acenaphthylene-d8	14.181	160	375236	27.726	ng/ul	0.00
54) 4-Nitrophenol-d4	14.692	143	12915m	6.651	ng/ul	0.00
60) Fluorene-d10	15.485	176	327665	29.042	ng/ul	0.00
65) 4,6-Dinitro-2-methylph...	15.602	200	64351	27.768	ng/ul	0.00
73) Anthracene-d10	17.336	188	542248	29.928	ng/ul	0.00
81) Pyrene-d10	19.633	212	697346	28.434	ng/ul	0.00
92) Benzo(a)pyrene-d12	24.328	264	755508	30.666	ng/ul	0.02

Target Compounds Qvalue

(#) = qualifier out of range (m) = manual integration (+) = signals summed

Data Path : Z:\svoasrv\HPCHEM1\BNA_G\Data\BG091824\
 Data File : BG062933.D
 Acq On : 19 Sep 2024 7: 36
 Operator : JU/RC
 Sample : P3997-12
 Misc :
 ALS Vial : 25 Sample Multiplier: 1

Instrument :
 BNA_G
 ClientSampleId :
 C0AT1

Manual Integrations APPROVED

Reviewed By :Jagrut Upadhyay 09/19/2024
 Supervised By :mohammad ahmed 09/22/2024

Quant Time: Sep 19 08:12:12 2024
 Quant Method : Z:\svoasrv\HPCHEM1\BNA_G\Methods\SFAM-EPA-BG091724.MA.M
 Quant Title : SVOA CALIBRATION
 QLast Update : Wed Sep 18 00:45:18 2024
 Response via : Initial Calibration

