

Data Path : Z:\svoasrv\HPCHEM1\BNA_G\Data\BG091824\
 Data File : BG062950.D
 Acq On : 19 Sep 2024 19:28
 Operator : JU/RC
 Sample : P3878-02MEDL 5X
 Misc :
 ALS Vial : 13 Sample Multiplier: 1

Instrument :
 BNA_G
 ClientSampleId :
 DDC46MEDL

Integration Parameters: LSCINT.P

Integrator: RTE
 Smoothing : OFF Filtering: 5
 Sampling : 1 Min Area: 0.1 % of largest Peak
 Start Thrs: 0.2 Max Peaks: 100
 Stop Thrs : 0 Peak Location: TOP

If leading or trailing edge < 100 prefer < Baseline drop else tangent >
 Peak separation: 5

Method : Z:\svoasrv\HPCHEM1\BNA_G\Methods\SFAM-EPA-BG091724.MA.M
 Title : SVOA CALIBRATION

Signal : TIC: BG062950.D\data.ms

peak #	R.T. min	first scan	max scan	last scan	PK TY	peak height	corr. area	corr. % max.	% of total
1	4.815	292	294	296	rBV2	3617	3450	0.26%	0.040%
2	4.974	320	321	325	rVB4	5834	3875	0.30%	0.044%
3	5.121	342	346	348	rBV3	2832	3951	0.30%	0.045%
4	5.244	365	367	371	rVB4	4740	5113	0.39%	0.059%
5	5.321	375	380	382	rBV3	6012	9144	0.70%	0.105%
6	5.385	390	391	394	rVB2	4629	4030	0.31%	0.046%
7	5.421	394	397	398	rBV2	2738	3224	0.25%	0.037%
8	5.456	399	403	407	rVB2	9675	13246	1.01%	0.152%
9	5.520	407	414	415	rBV3	7483	11117	0.85%	0.127%
10	5.732	446	450	451	rBV2	4568	4733	0.36%	0.054%
11	5.826	463	466	470	rBV3	6073	8576	0.65%	0.098%
12	5.885	471	476	484	rVB2	62392	97131	7.41%	1.114%
13	5.996	492	495	497	rVB3	4126	4035	0.31%	0.046%
14	6.043	501	503	506	rBV2	4334	3831	0.29%	0.044%
15	6.143	514	520	525	rBV6	10599	21666	1.65%	0.248%
16	6.202	528	530	533	rVB3	4928	4276	0.33%	0.049%
17	6.261	535	540	546	rVB4	8019	17626	1.34%	0.202%
18	6.355	552	556	557	rBV3	10424	14311	1.09%	0.164%
19	6.419	563	567	573	rBV3	17362	27483	2.10%	0.315%
20	6.466	573	575	576	rBV2	6210	3674	0.28%	0.042%
21	6.507	578	582	585	rBV3	10400	16966	1.29%	0.195%
22	6.684	608	612	617	rVB5	9249	17980	1.37%	0.206%
23	6.742	617	622	623	rBV4	7449	11346	0.87%	0.130%
24	6.819	631	635	637	rBV3	9806	13947	1.06%	0.160%
25	6.913	647	651	654	rBV2	25964	38545	2.94%	0.442%
26	6.954	654	658	663	rVV3	26955	43020	3.28%	0.493%
27	7.025	663	670	676	rVV5	60180	118833	9.07%	1.363%
28	7.083	676	680	685	rVB2	20733	32132	2.45%	0.368%
29	7.130	685	688	692	rVB5	7385	10646	0.81%	0.122%
30	7.189	692	698	703	rBV2	23568	41694	3.18%	0.478%
31	7.383	726	731	740	rVB7	36534	82013	6.26%	0.940%
32	7.489	743	749	759	rVB2	135362	281609	21.49%	3.229%
33	7.853	805	811	818	rBV2	149475	284381	21.70%	3.261%
34	7.918	818	822	828	rVV	51994	83679	6.38%	0.960%
35	7.970	828	831	837	rVB3	18082	30243	2.31%	0.347%
36	8.076	840	849	853	rBV4	20296	47994	3.66%	0.550%

Data Path : Z:\svoasrv\HPCHEM1\BNA_G\Data\BG091824\
 Data File : BG062950.D
 Acq On : 19 Sep 2024 19:28
 Operator : JU/RC
 Sample : P3878-02MEDL 5X
 Misc :
 ALS Vial : 13 Sample Multiplier: 1

Instrument :
 BNA_G
 ClientSampleId :
 DDC46MEDL

Integration Parameters: LSCINT.P

Integrator: RTE
 Smoothing : OFF
 Sampling : 1
 Start Thrs : 0.2
 Stop Thrs : 0

Filtering: 5
 Min Area: 0.1 % of largest Peak
 Max Peaks: 100
 Peak Location: TOP

If leading or trailing edge < 100 prefer < Baseline drop else tangent >
 Peak separation: 5

Method : Z:\svoasrv\HPCHEM1\BNA_G\Methods\SFAM-EPA-BG091724.MA.M
 Title : SVOA CALIBRATION

37	8.282	881	884	889	rBV7	7706	14307	1.09%	0.164%
38	8.393	899	903	909	rVB6	21667	43079	3.29%	0.494%
39	8.517	917	924	927	rBV6	27805	68678	5.24%	0.788%
40	8.623	938	942	947	rBV3	20250	33301	2.54%	0.382%
41	8.728	959	960	964	rVB4	4738	3618	0.28%	0.041%
42	8.805	970	973	978	rBV4	13415	23456	1.79%	0.269%
43	9.087	1016	1021	1029	rVB	120968	187406	14.30%	2.149%
44	9.733	1124	1131	1135	rBV7	29015	58857	4.49%	0.675%
45	10.003	1174	1177	1182	rBV6	10422	11338	0.87%	0.130%
46	10.050	1182	1185	1186	rBV2	7299	6966	0.53%	0.080%
47	10.180	1205	1207	1212	rVB4	8713	12369	0.94%	0.142%
48	10.268	1219	1222	1229	rVB4	31141	59647	4.55%	0.684%
49	10.338	1230	1234	1239	rBV5	15248	21484	1.64%	0.246%
50	10.468	1254	1256	1260	rVB5	4422	3506	0.27%	0.040%
51	10.644	1275	1286	1292	rBV	215723	467639	35.68%	5.362%
52	10.767	1302	1307	1313	rBV5	43300	102461	7.82%	1.175%
53	11.026	1346	1351	1359	rVB2	54938	81626	6.23%	0.936%
54	11.267	1388	1392	1396	rBV5	7929	10721	0.82%	0.123%
55	11.490	1425	1430	1432	rBV6	8521	14088	1.07%	0.162%
56	11.549	1435	1440	1441	rBV2	7328	10774	0.82%	0.124%
57	11.672	1458	1461	1466	rBV4	20197	33034	2.52%	0.379%
58	11.743	1469	1473	1478	rVB2	53747	84582	6.45%	0.970%
59	11.907	1497	1501	1513	rVB3	29733	51863	3.96%	0.595%
60	12.072	1523	1529	1532	rBV3	46392	78324	5.98%	0.898%
61	12.318	1566	1571	1578	rVB2	59448	105864	8.08%	1.214%
62	12.677	1629	1632	1633	rBV3	4529	4264	0.33%	0.049%
63	13.317	1737	1741	1748	rVB2	52932	81013	6.18%	0.929%
64	13.411	1754	1757	1759	rBV4	5263	6391	0.49%	0.073%
65	13.517	1772	1775	1776	rBV3	6431	6908	0.53%	0.079%
66	13.746	1811	1814	1820	rBV4	21545	31900	2.43%	0.366%
67	13.893	1836	1839	1845	rVB	66443	92579	7.06%	1.062%
68	14.122	1874	1878	1881	rBV4	24129	30208	2.30%	0.346%
69	14.181	1884	1888	1893	rVB	56142	83673	6.38%	0.959%
70	14.298	1904	1908	1910	rBV4	8850	10721	0.82%	0.123%
71	14.392	1920	1924	1929	rVB	128860	170267	12.99%	1.952%
72	14.486	1935	1940	1948	rVB	321560	505851	38.60%	5.801%
73	14.633	1961	1965	1972	rVB2	79846	118193	9.02%	1.355%
74	14.704	1972	1977	1985	rBV9	30959	64809	4.94%	0.743%
75	14.933	2014	2016	2017	rBV2	9409	9323	0.71%	0.107%
76	15.250	2066	2070	2077	rVB2	71748	114712	8.75%	1.315%

Data Path : Z:\svoasrv\HPCHEM1\BNA_G\Data\BG091824\
 Data File : BG062950.D
 Acq On : 19 Sep 2024 19:28
 Operator : JU/RC
 Sample : P3878-02MEDL 5X
 Misc :
 ALS Vial : 13 Sample Multiplier: 1

Instrument :
 BNA_G
 ClientSampleId :
 DDC46MEDL

Integration Parameters: LSCINT.P
 Integrator: RTE
 Smoothing : OFF Filtering: 5
 Sampling : 1 Min Area: 0.1 % of largest Peak
 Start Thrs: 0.2 Max Peaks: 100
 Stop Thrs : 0 Peak Location: TOP

If leading or trailing edge < 100 prefer < Baseline drop else tangent >
 Peak separation: 5

Method : Z:\svoasrv\HPCHEM1\BNA_G\Methods\SFAM-EPA-BG091724.MA.M
 Title : SVOA CALIBRATION

77	15.479	2105	2109	2116	rVB2	90934	144401	11.02%	1.656%
78	15.849	2168	2172	2178	rVB3	40929	61226	4.67%	0.702%
79	16.126	2215	2219	2228	rVB8	30413	51261	3.91%	0.588%
80	16.208	2230	2233	2236	rBV2	58706	73529	5.61%	0.843%
81	16.889	2344	2349	2358	rBV	826148	1310640	100.00%	15.029%
82	17.001	2366	2368	2374	rVB2	43239	44911	3.43%	0.515%
83	17.236	2403	2408	2417	rBV	421686	638260	48.70%	7.319%
84	17.336	2421	2425	2430	rVB2	116288	162591	12.41%	1.864%
85	17.741	2490	2494	2499	rVB3	47369	64745	4.94%	0.742%
86	17.912	2521	2523	2527	rBV4	13299	15654	1.19%	0.180%
87	19.175	2735	2738	2743	rBV6	18183	31351	2.39%	0.360%
88	19.633	2811	2816	2822	rBV	134305	199355	15.21%	2.286%
89	21.490	3126	3132	3141	rBV	472510	747306	57.02%	8.569%
90	24.528	3641	3649	3663	rVB	300103	836085	63.79%	9.587%

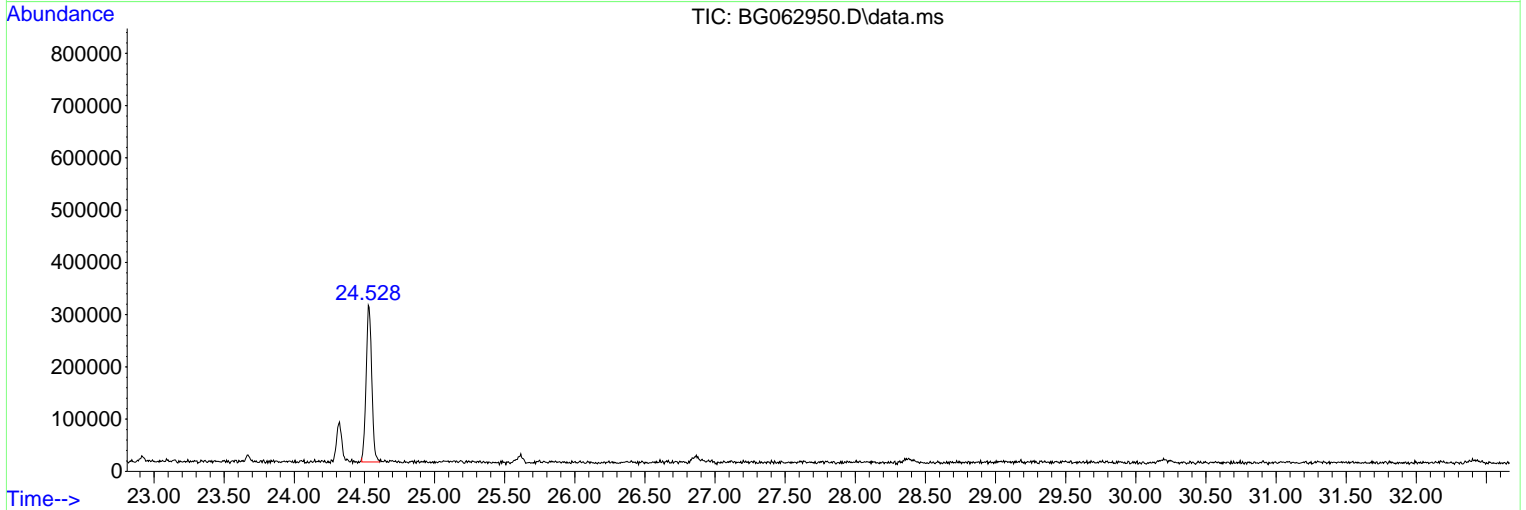
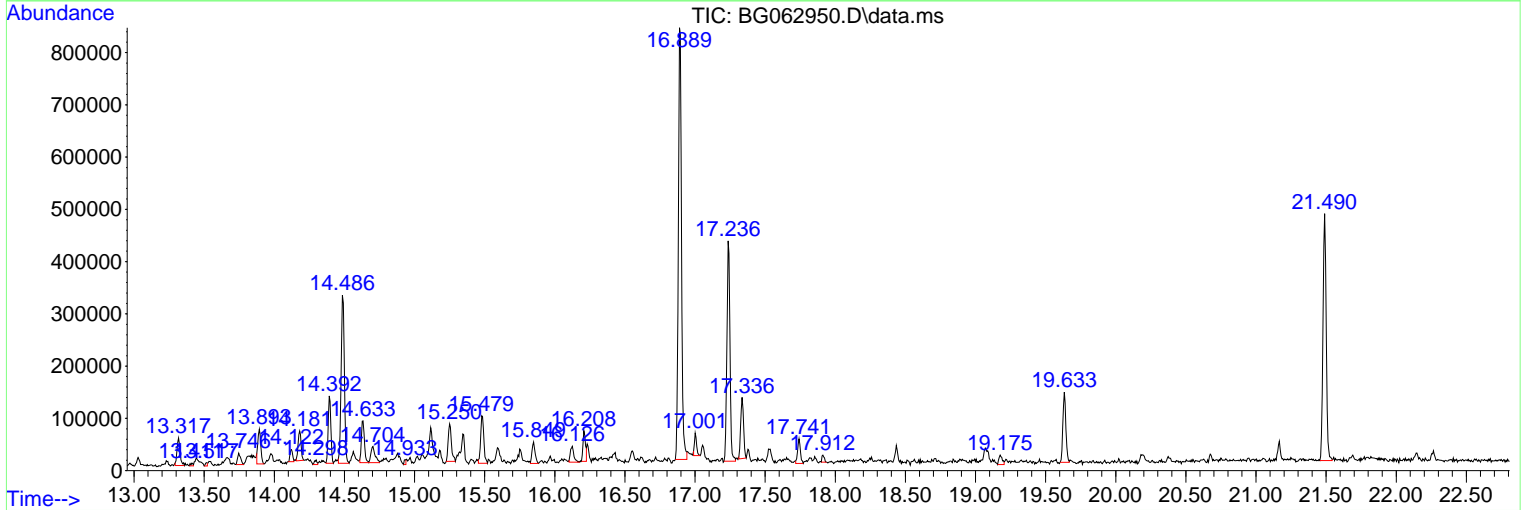
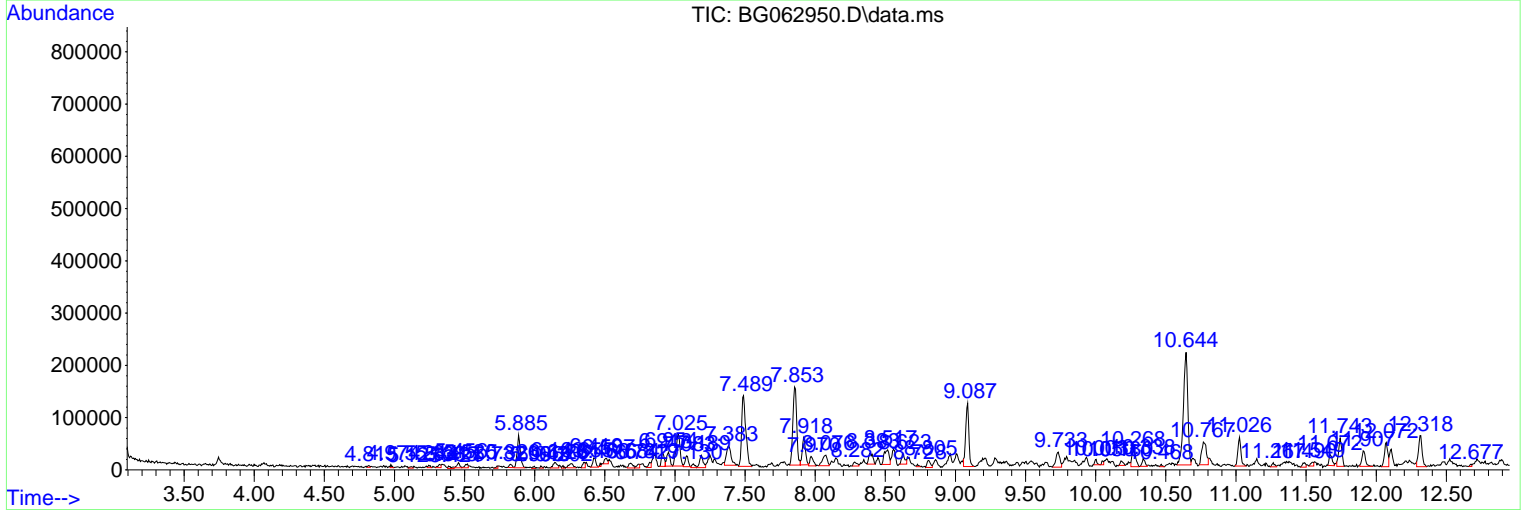
Sum of corrected areas: 8720635

Data Path : Z:\svoasrv\HPCHEM1\BNA_G\Data\BG091824\
 Data File : BG062950.D
 Acq On : 19 Sep 2024 19:28
 Operator : JU/RC
 Sample : P3878-02MEDL 5X
 Misc :
 ALS Vial : 13 Sample Multiplier: 1

Instrument :
 BNA_G
ClientSampleId :
 DDC46MEDL

Quant Method : Z:\svoasrv\HPCHEM1\BNA_G\Methods\SFAM-EPA-BG091724.MA.M
 Quant Title : SVOA CALIBRATION

TIC Library : C:\DATABASE\NIST20.L
 TIC Integration Parameters: LSCINT.P



Data Path : Z:\svoasrv\HPCHEM1\BNA_G\Data\BG091824\
 Data File : BG062950.D
 Acq On : 19 Sep 2024 19:28
 Operator : JU/RC
 Sample : P3878-02MEDL 5X
 Misc :
 ALS Vial : 13 Sample Multiplier: 1

Instrument :
 BNA_G
 ClientSampleId :
 DDC46MEDL

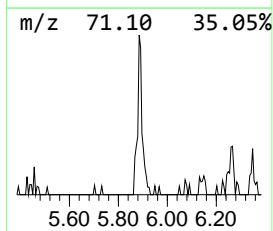
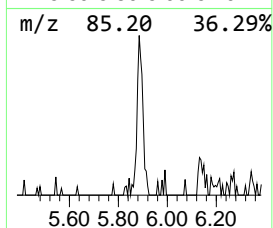
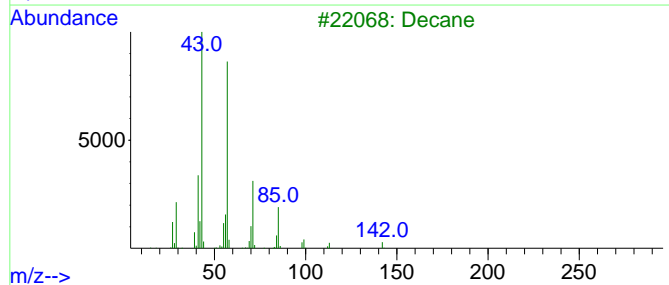
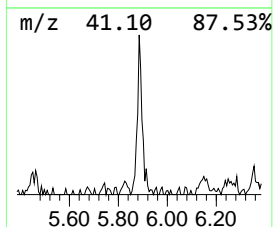
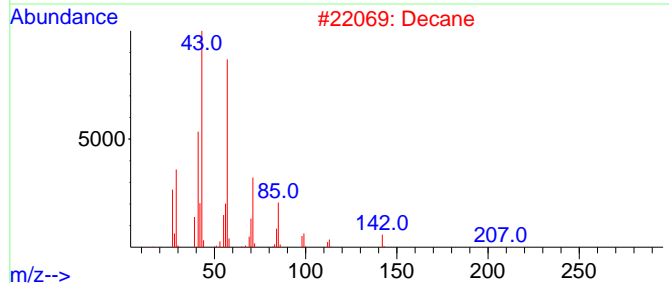
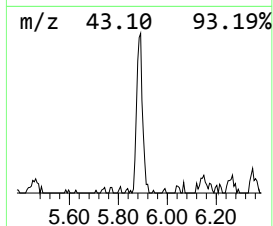
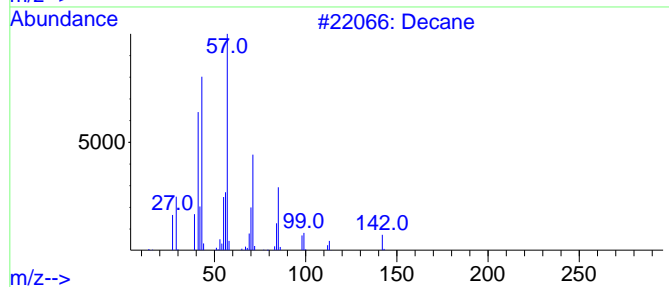
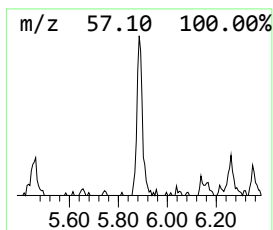
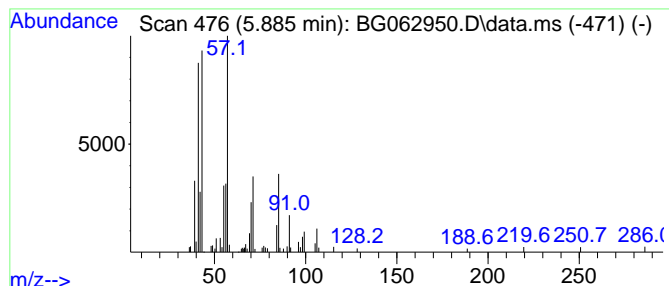
Quant Method : Z:\svoasrv\HPCHEM1\BNA_G\Methods\SFAM-EPA-BG091724.MA.M
 Quant Title : SVOA CALIBRATION

TIC Library : C:\DATABASE\NIST20.L
 TIC Integration Parameters: LSCINT.P

 Peak Number 1 (DEL) Alkane: Straight-Chai... Concentration Rank 3

R.T.	EstConc	Area	Relative to ISTD	R.T.
5.885	6.83 ng/ul	97131	1,4-Dichlorobenzene-d4	7.859

Hit#	of	5	Tentative ID	MW	MolForm	CAS#	Qual
1			Decane	142	C10H22	000124-18-5	72
2			Decane	142	C10H22	000124-18-5	59
3			Decane	142	C10H22	000124-18-5	50
4			Hexadecane, 3-methyl-	240	C17H36	006418-43-5	50
5			Tridecane, 3-methyl-	198	C14H30	006418-41-3	50



Data Path : Z:\svoasrv\HPCHEM1\BNA_G\Data\BG091824\
 Data File : BG062950.D
 Acq On : 19 Sep 2024 19:28
 Operator : JU/RC
 Sample : P3878-02MEDL 5X
 Misc :
 ALS Vial : 13 Sample Multiplier: 1

Instrument :
 BNA_G
 ClientSampleId :
 DDC46MEDL

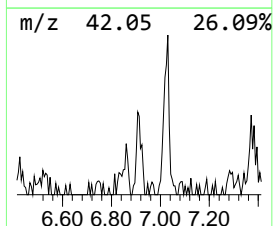
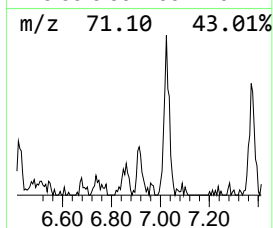
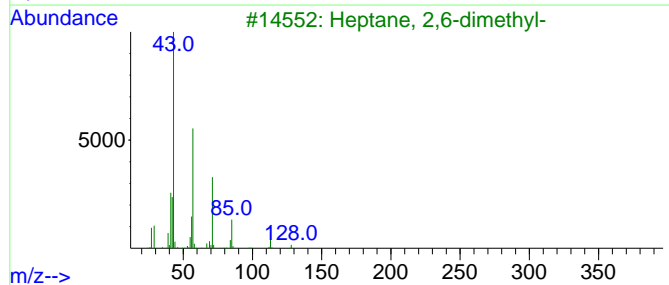
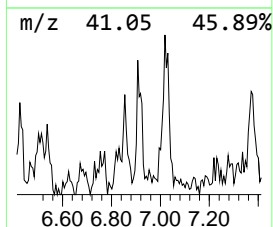
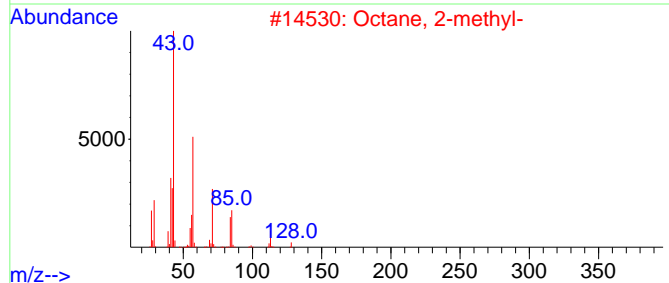
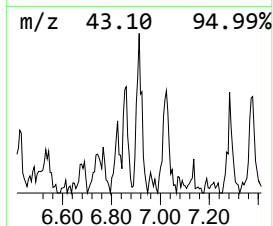
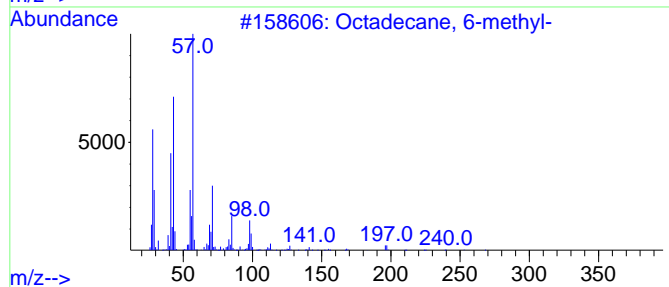
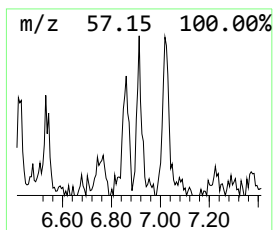
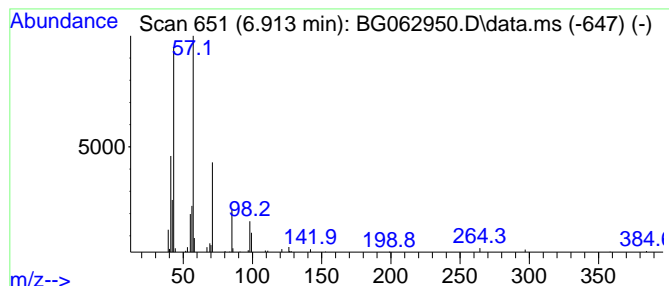
Quant Method : Z:\svoasrv\HPCHEM1\BNA_G\Methods\SFAM-EPA-BG091724.MA.M
 Quant Title : SVOA CALIBRATION

TIC Library : C:\DATABASE\NIST20.L
 TIC Integration Parameters: LSCINT.P

 Peak Number 2 (DEL) Alkane: Straight-Chai... Concentration Rank 15

R.T.	EstConc	Area	Relative to ISTD	R.T.
6.913	2.71 ng/ul	38545	1,4-Dichlorobenzene-d4	7.859

Hit#	of 5	Tentative ID	MW	MolForm	CAS#	Qual
1		Octadecane, 6-methyl-	268	C19H40	010544-96-4	59
2		Octane, 2-methyl-	128	C9H20	003221-61-2	59
3		Heptane, 2,6-dimethyl-	128	C9H20	001072-05-5	53
4		Heptane, 3,4-dimethyl-	128	C9H20	000922-28-1	53
5		Dodecane, 3-methyl-	184	C13H28	017312-57-1	53



Data Path : Z:\svoasrv\HPCHEM1\BNA_G\Data\BG091824\
 Data File : BG062950.D
 Acq On : 19 Sep 2024 19:28
 Operator : JU/RC
 Sample : P3878-02MEDL 5X
 Misc :
 ALS Vial : 13 Sample Multiplier: 1

Instrument :
 BNA_G
 ClientSampleId :
 DDC46MEDL

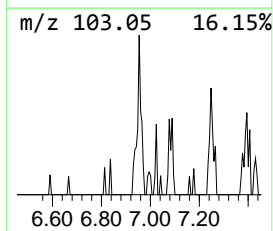
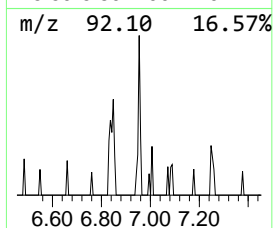
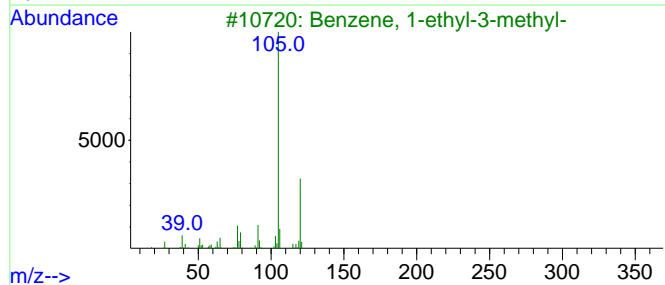
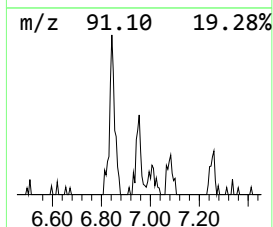
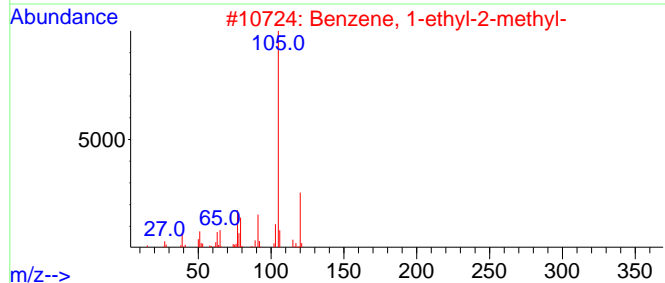
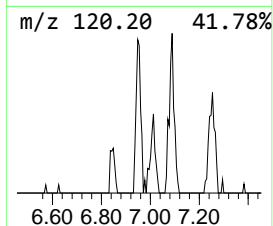
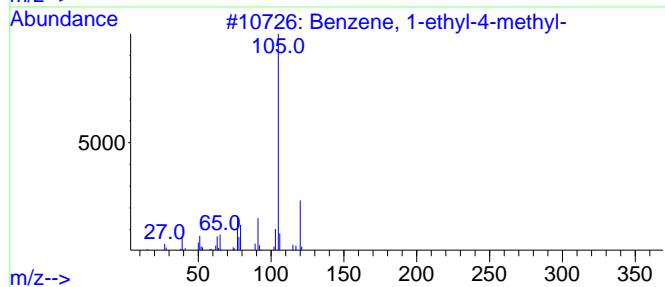
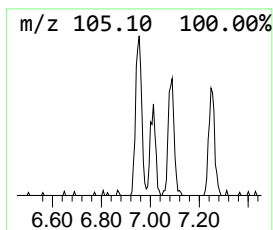
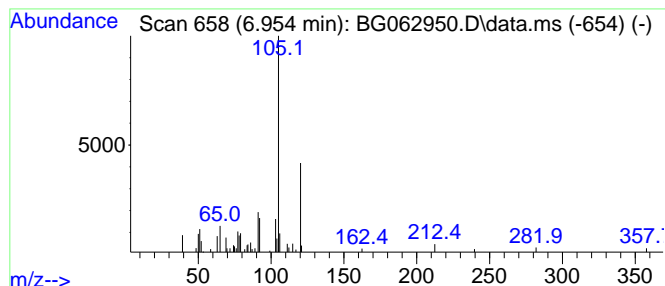
Quant Method : Z:\svoasrv\HPCHEM1\BNA_G\Methods\SFAM-EPA-BG091724.MA.M
 Quant Title : SVOA CALIBRATION

TIC Library : C:\DATABASE\NIST20.L
 TIC Integration Parameters: LSCINT.P

 Peak Number 3 Benzene, 1-ethyl-4-methyl- Concentration Rank 14

R.T.	EstConc	Area	Relative to ISTD	R.T.
6.954	3.03 ng/ul	43020	1,4-Dichlorobenzene-d4	7.859

Hit#	of	5	Tentative ID	MW	MolForm	CAS#	Qual
1			Benzene, 1-ethyl-4-methyl-	120	C9H12	000622-96-8	74
2			Benzene, 1-ethyl-2-methyl-	120	C9H12	000611-14-3	72
3			Benzene, 1-ethyl-3-methyl-	120	C9H12	000620-14-4	72
4			Benzene, (1-methylethyl)-	120	C9H12	000098-82-8	72
5			Benzene, 1,2,3-trimethyl-	120	C9H12	000526-73-8	72



Data Path : Z:\svoasrv\HPCHEM1\BNA_G\Data\BG091824\
 Data File : BG062950.D
 Acq On : 19 Sep 2024 19:28
 Operator : JU/RC
 Sample : P3878-02MEDL 5X
 Misc :
 ALS Vial : 13 Sample Multiplier: 1

Instrument :
 BNA_G
 ClientSampleId :
 DDC46MEDL

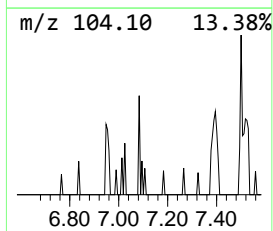
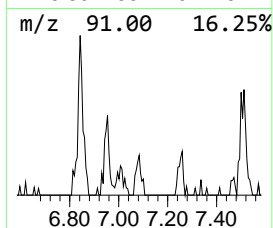
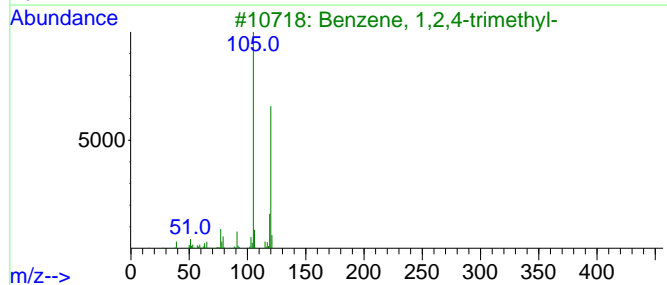
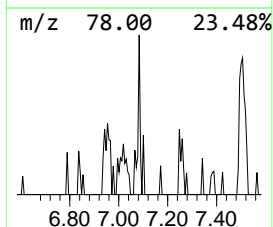
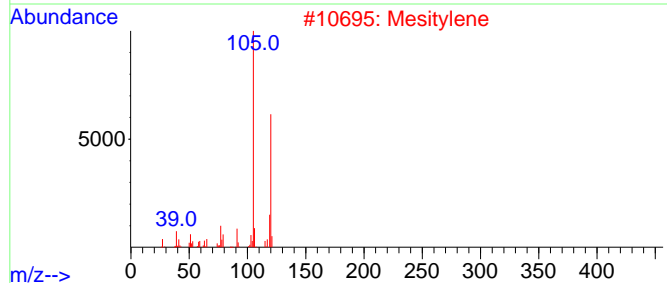
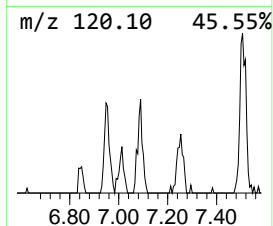
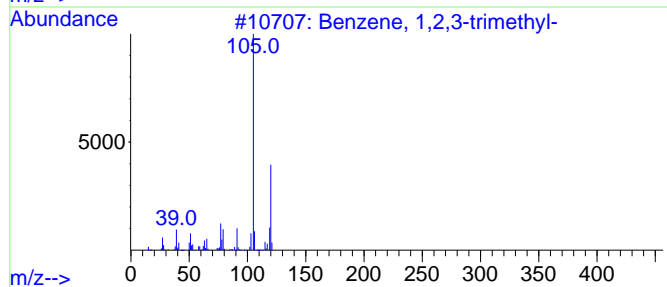
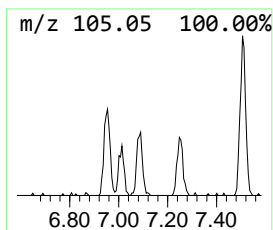
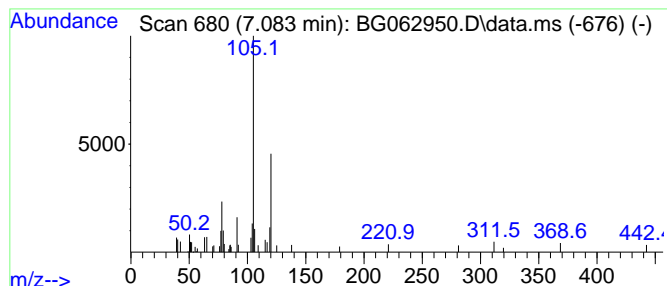
Quant Method : Z:\svoasrv\HPCHEM1\BNA_G\Methods\SFAM-EPA-BG091724.MA.M
 Quant Title : SVOA CALIBRATION

TIC Library : C:\DATABASE\NIST20.L
 TIC Integration Parameters: LSCINT.P

 Peak Number 4 Benzene, 1,2,3-trimethyl- Concentration Rank 19

R.T.	EstConc	Area	Relative to ISTD	R.T.
7.083	2.26 ng/ul	32132	1,4-Dichlorobenzene-d4	7.859

Hit#	of	5	Tentative ID	MW	MolForm	CAS#	Qual
1			Benzene, 1,2,3-trimethyl-	120	C9H12	000526-73-8	58
2			Mesitylene	120	C9H12	000108-67-8	52
3			Benzene, 1,2,4-trimethyl-	120	C9H12	000095-63-6	52
4			Benzene, 1,2,4-trimethyl-	120	C9H12	000095-63-6	52
5			Benzene, 1,2,4-trimethyl-	120	C9H12	000095-63-6	52



Data Path : Z:\svoasrv\HPCHEM1\BNA_G\Data\BG091824\
 Data File : BG062950.D
 Acq On : 19 Sep 2024 19:28
 Operator : JU/RC
 Sample : P3878-02MEDL 5X
 Misc :
 ALS Vial : 13 Sample Multiplier: 1

Instrument :
 BNA_G
 ClientSampleId :
 DDC46MEDL

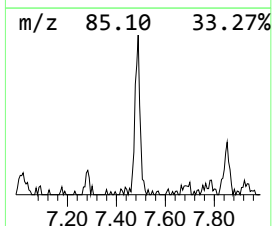
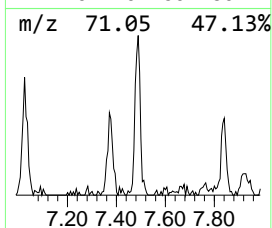
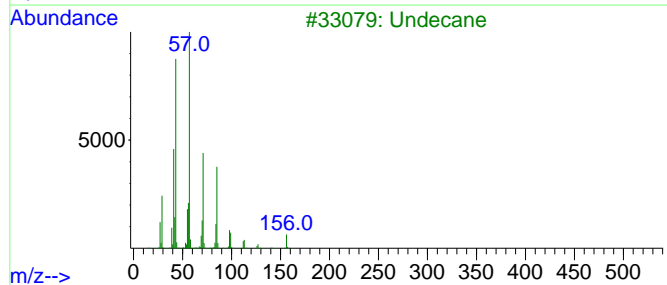
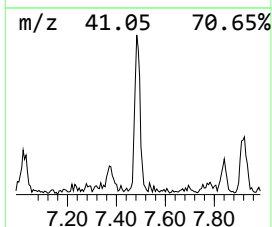
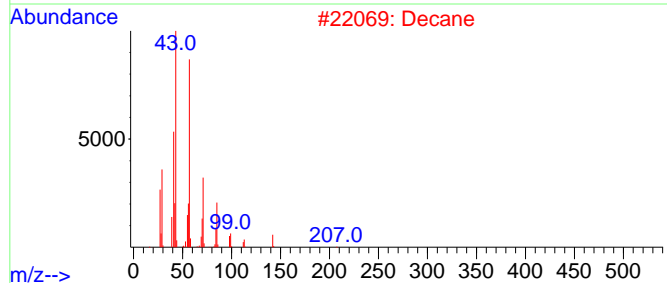
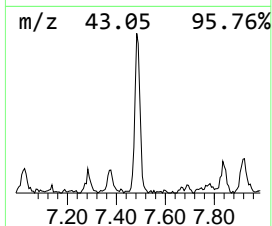
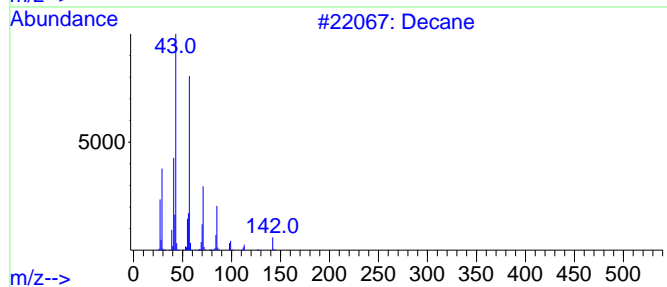
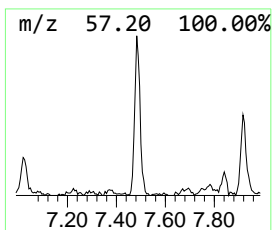
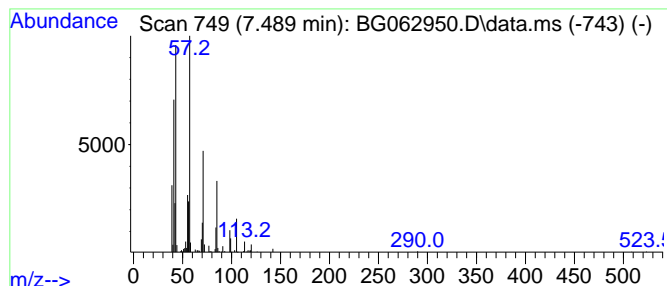
Quant Method : Z:\svoasrv\HPCHEM1\BNA_G\Methods\SFAM-EPA-BG091724.MA.M
 Quant Title : SVOA CALIBRATION

TIC Library : C:\DATABASE\NIST20.L
 TIC Integration Parameters: LSCINT.P

 Peak Number 5 (DEL) Alkane: Straight-Chai... Concentration Rank 1

R.T.	EstConc	Area	Relative to ISTD	R.T.
7.489	19.81 ng/ul	281609	1,4-Dichlorobenzene-d4	7.859

Hit#	of	5	Tentative ID	MW	MolForm	CAS#	Qual
1			Decane	142	C10H22	000124-18-5	87
2			Decane	142	C10H22	000124-18-5	87
3			Undecane	156	C11H24	001120-21-4	72
4			Carbonic acid, prop-1-en-2-yl tr...	284	C17H32O3	1000382-90-8	72
5			Dodecane	170	C12H26	000112-40-3	72



Data Path : Z:\svoasrv\HPCHEM1\BNA_G\Data\BG091824\
 Data File : BG062950.D
 Acq On : 19 Sep 2024 19:28
 Operator : JU/RC
 Sample : P3878-02MEDL 5X
 Misc :
 ALS Vial : 13 Sample Multiplier: 1

Instrument :
 BNA_G
 ClientSampleId :
 DDC46MEDL

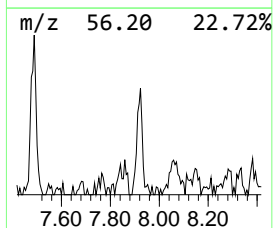
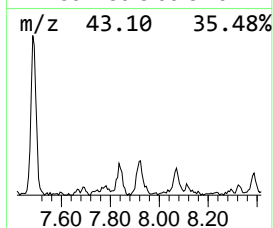
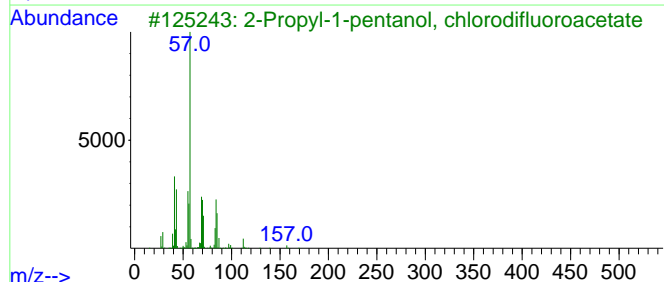
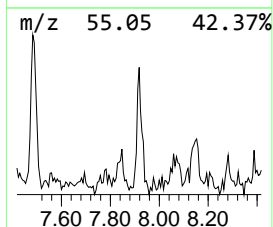
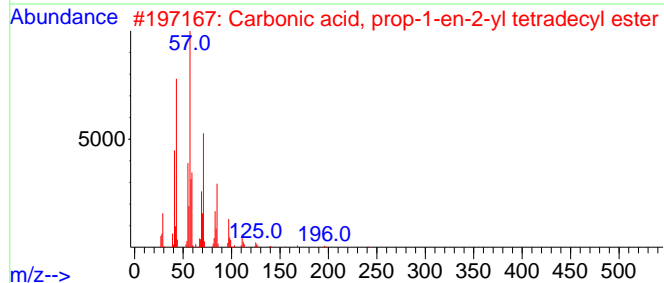
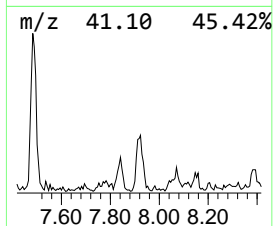
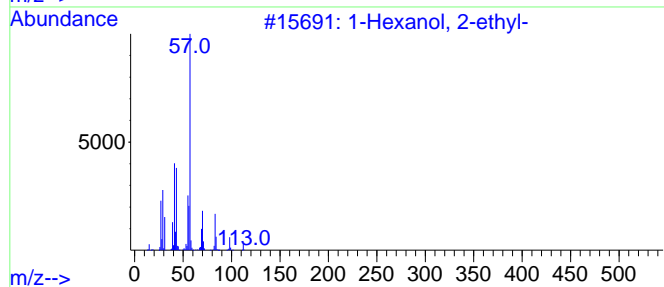
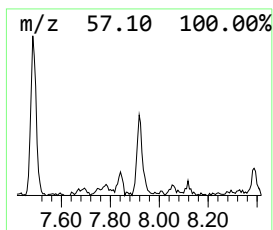
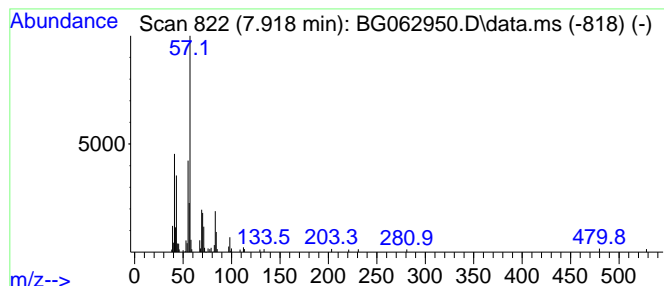
Quant Method : Z:\svoasrv\HPCHEM1\BNA_G\Methods\SFAM-EPA-BG091724.MA.M
 Quant Title : SVOA CALIBRATION

TIC Library : C:\DATABASE\NIST20.L
 TIC Integration Parameters: LSCINT.P

 Peak Number 6 1-Hexanol, 2-ethyl- Concentration Rank 5

R.T.	EstConc	Area	Relative to ISTD	R.T.
7.918	5.88 ng/ul	83679	1,4-Dichlorobenzene-d4	7.859

Hit#	of	5	Tentative ID	MW	MolForm	CAS#	Qual
1			1-Hexanol, 2-ethyl-	130	C8H18O	000104-76-7	72
2			Carbonic acid, prop-1-en-2-yl te...	298	C18H34O3	1000382-90-9	64
3			2-Propyl-1-pentanol, chlorodiflu...	242	C10H17ClF2O2	1000447-27-3	64
4			1-Hexanol, 2-ethyl-	130	C8H18O	000104-76-7	59
5			2-Ethyl-1-hexanol, trifluoroacetate	226	C10H17F3O2	053800-08-1	59



Data Path : Z:\svoasrv\HPCHEM1\BNA_G\Data\BG091824\
 Data File : BG062950.D
 Acq On : 19 Sep 2024 19:28
 Operator : JU/RC
 Sample : P3878-02MEDL 5X
 Misc :
 ALS Vial : 13 Sample Multiplier: 1

Instrument :
 BNA_G
 ClientSampleId :
 DDC46MEDL

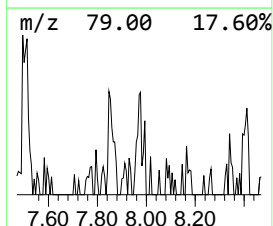
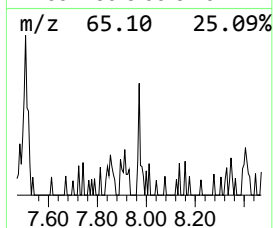
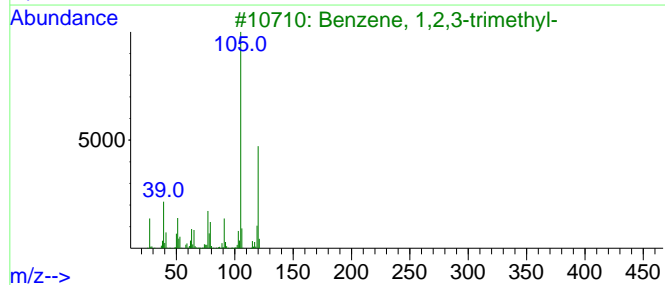
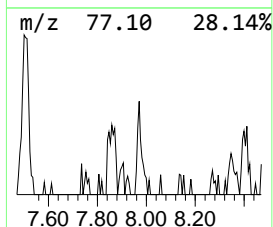
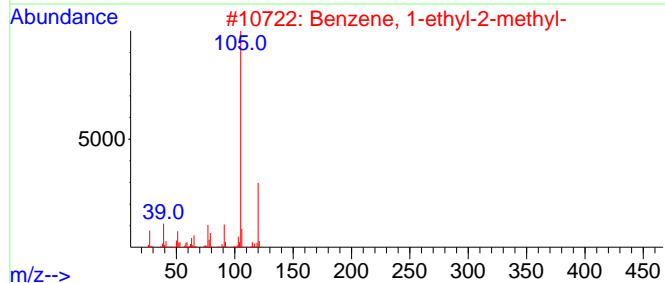
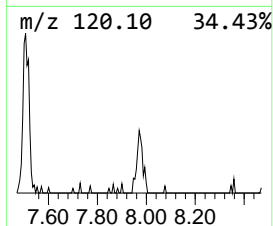
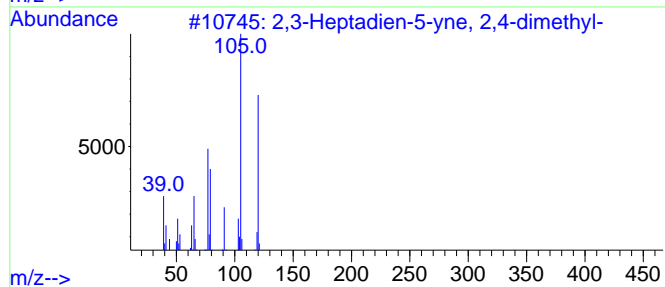
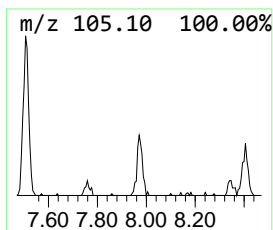
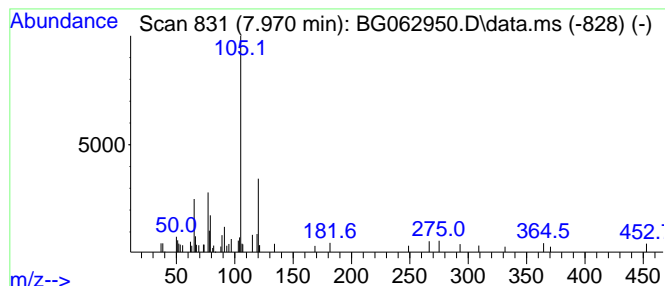
Quant Method : Z:\svoasrv\HPCHEM1\BNA_G\Methods\SFAM-EPA-BG091724.MA.M
 Quant Title : SVOA CALIBRATION

TIC Library : C:\DATABASE\NIST20.L
 TIC Integration Parameters: LSCINT.P

 Peak Number 7 unknown-01 Concentration Rank 21

R.T.	EstConc	Area	Relative to ISTD	R.T.
7.970	2.13 ng/ul	30243	1,4-Dichlorobenzene-d4	7.859

Hit#	of	5	Tentative ID	MW	MolForm	CAS#	Qual
1			2,3-Heptadien-5-yne, 2,4-dimethyl-	120	C9H12	041898-89-9	47
2			Benzene, 1-ethyl-2-methyl-	120	C9H12	000611-14-3	47
3			Benzene, 1,2,3-trimethyl-	120	C9H12	000526-73-8	38
4			Benzene, (1-methylethyl)-	120	C9H12	000098-82-8	38
5			Spiro[4.4]nona-1,6-diene, (S)-	120	C9H12	039746-39-9	38



Data Path : Z:\svoasrv\HPCHEM1\BNA_G\Data\BG091824\
 Data File : BG062950.D
 Acq On : 19 Sep 2024 19:28
 Operator : JU/RC
 Sample : P3878-02MEDL 5X
 Misc :
 ALS Vial : 13 Sample Multiplier: 1

Instrument :
 BNA_G
 ClientSampleId :
 DDC46MEDL

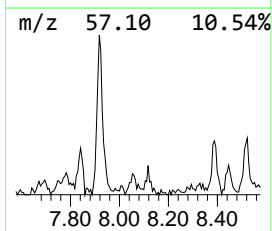
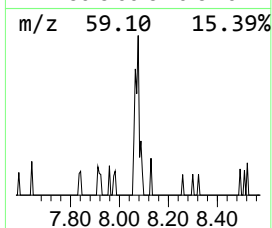
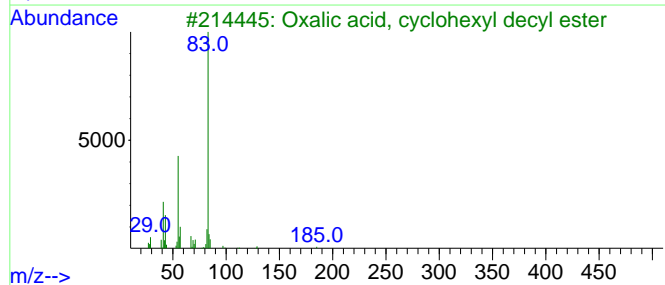
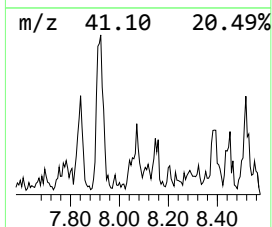
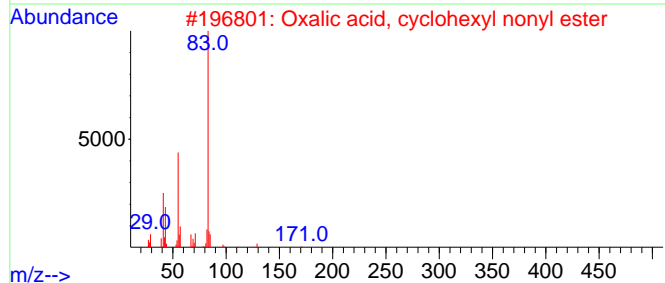
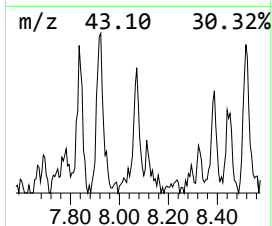
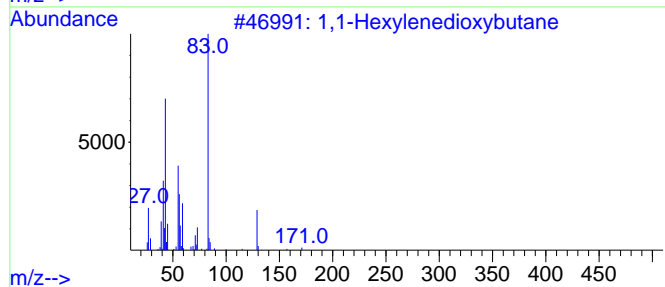
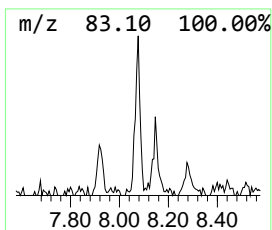
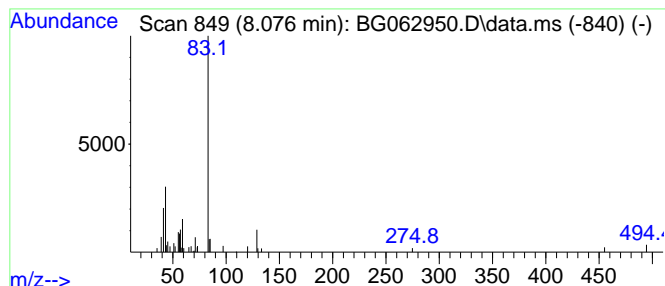
Quant Method : Z:\svoasrv\HPCHEM1\BNA_G\Methods\SFAM-EPA-BG091724.MA.M
 Quant Title : SVOA CALIBRATION

TIC Library : C:\DATABASE\NIST20.L
 TIC Integration Parameters: LSCINT.P

 Peak Number 8 1,1-Hexylenedioxybutane Concentration Rank 10

R.T.	EstConc	Area	Relative to ISTD	R.T.
8.076	3.38 ng/ul	47994	1,4-Dichlorobenzene-d4	7.859

Hit#	of	5	Tentative ID	MW	MolForm	CAS#	Qual
1			1,1-Hexylenedioxybutane	172	C10H20O2	1000249-77-4	59
2			Oxalic acid, cyclohexyl nonyl ester	298	C17H30O4	1000309-31-1	59
3			Oxalic acid, cyclohexyl decyl ester	312	C18H32O4	1000309-31-2	45
4			Oxalic acid, cyclohexyl hexyl ester	256	C14H24O4	1000309-30-8	42
5			Oxalic acid, cyclohexyl undecyl ...	326	C19H34O4	1000309-31-3	42



Data Path : Z:\svoasrv\HPCHEM1\BNA_G\Data\BG091824\
 Data File : BG062950.D
 Acq On : 19 Sep 2024 19:28
 Operator : JU/RC
 Sample : P3878-02MEDL 5X
 Misc :
 ALS Vial : 13 Sample Multiplier: 1

Instrument :
 BNA_G
 ClientSampleId :
 DDC46MEDL

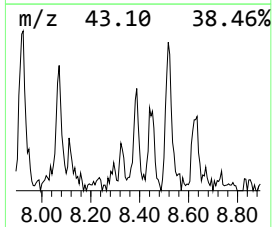
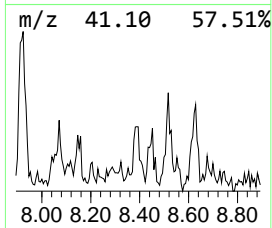
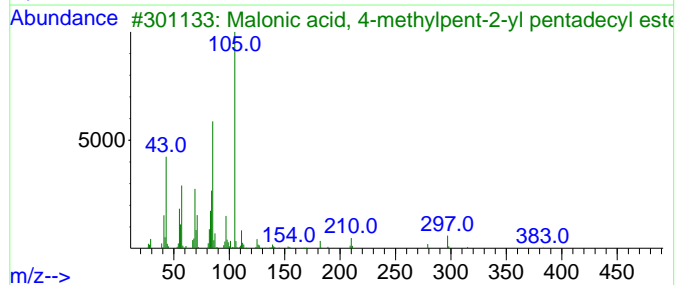
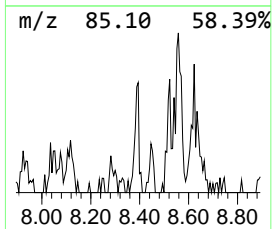
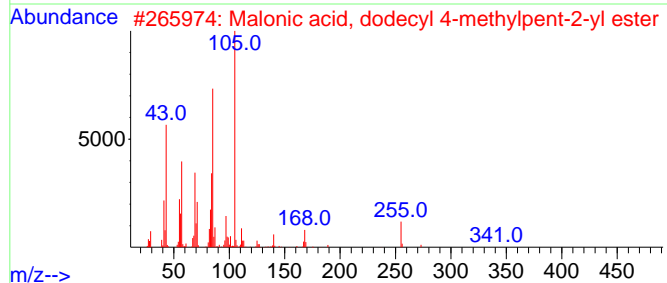
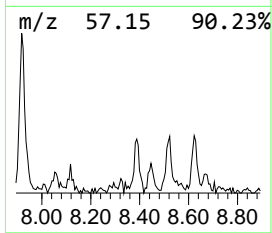
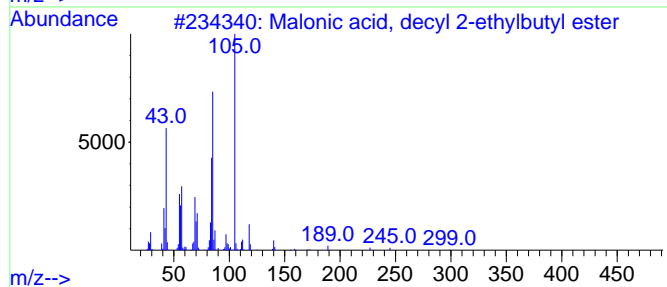
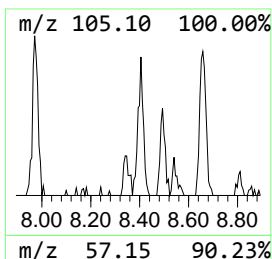
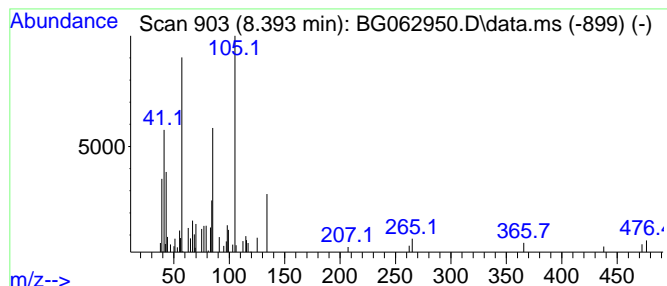
Quant Method : Z:\svoasrv\HPCHEM1\BNA_G\Methods\SFAM-EPA-BG091724.MA.M
 Quant Title : SVOA CALIBRATION

TIC Library : C:\DATABASE\NIST20.L
 TIC Integration Parameters: LSCINT.P

 Peak Number 9 unknown-02 Concentration Rank 13

R.T.	EstConc	Area	Relative to ISTD	R.T.
8.393	3.03 ng/ul	43079	1,4-Dichlorobenzene-d4	7.859

Hit#	of	5	Tentative ID	MW	MolForm	CAS#	Qual
1			Malonic acid, decyl 2-ethylbutyl...	328	C19H36O4	1000348-96-1	47
2			Malonic acid, dodecyl 4-methylpe...	356	C21H40O4	1000349-34-0	38
3			Malonic acid, 4-methylpent-2-yl ...	398	C24H46O4	1000349-34-3	38
4			Malonic acid, 4-methylpent-2-yl ...	440	C27H52O4	1000349-34-5	38
5			Malonic acid, 4-methylpent-2-yl ...	384	C23H44O4	1000349-34-2	38



Data Path : Z:\svoasrv\HPCHEM1\BNA_G\Data\BG091824\
 Data File : BG062950.D
 Acq On : 19 Sep 2024 19:28
 Operator : JU/RC
 Sample : P3878-02MEDL 5X
 Misc :
 ALS Vial : 13 Sample Multiplier: 1

Instrument :
 BNA_G
 ClientSampleId :
 DDC46MEDL

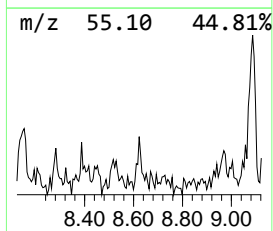
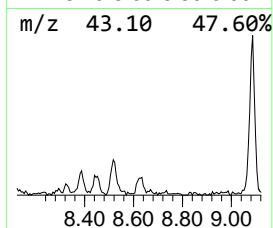
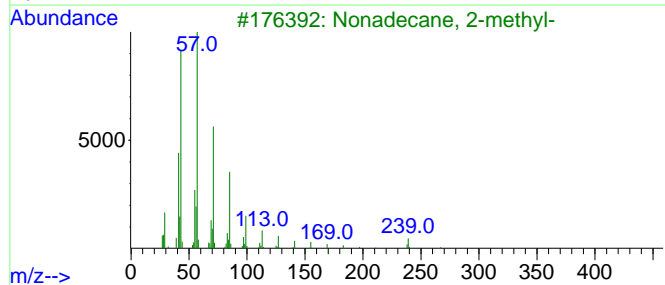
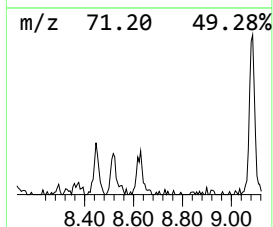
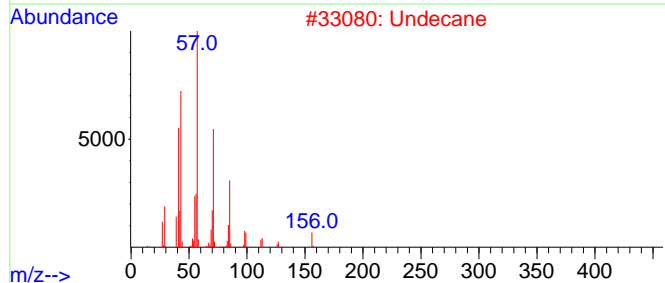
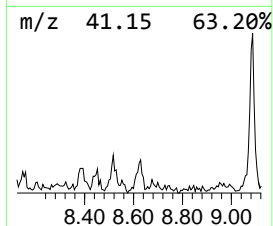
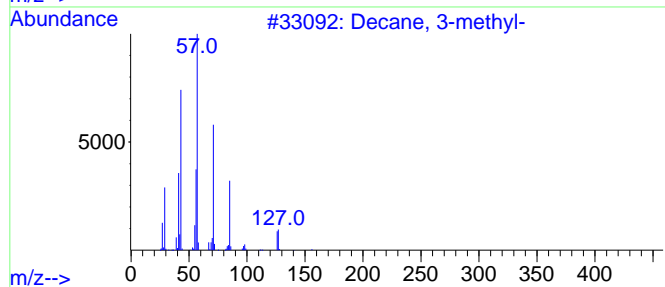
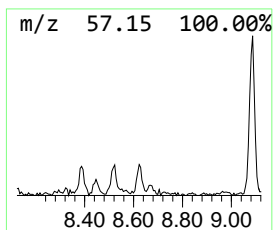
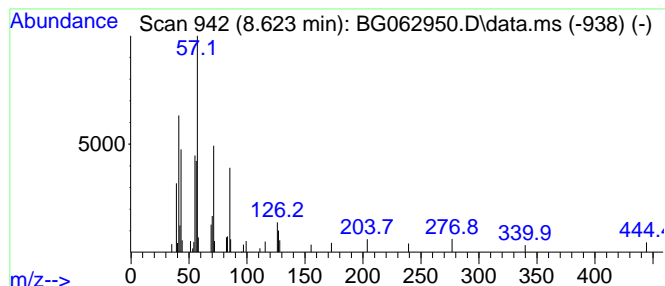
Quant Method : Z:\svoasrv\HPCHEM1\BNA_G\Methods\SFAM-EPA-BG091724.MA.M
 Quant Title : SVOA CALIBRATION

TIC Library : C:\DATABASE\NIST20.L
 TIC Integration Parameters: LSCINT.P

 Peak Number 10 (DEL) Alkane: Straight-Chai... Concentration Rank 17

R.T.	EstConc	Area	Relative to ISTD	R.T.
8.623	2.34 ng/ul	33301	1,4-Dichlorobenzene-d4	7.859

Hit#	of 5	Tentative ID	MW	MolForm	CAS#	Qual
1		Decane, 3-methyl-	156	C11H24	013151-34-3	59
2		Undecane	156	C11H24	001120-21-4	50
3		Nonadecane, 2-methyl-	282	C20H42	001560-86-7	50
4		Sulfurous acid, butyl nonyl ester	264	C13H28O3S	1000309-17-6	50
5		Nonane, 3,7-dimethyl-	156	C11H24	017302-32-8	47



Data Path : Z:\svoasrv\HPCHEM1\BNA_G\Data\BG091824\
 Data File : BG062950.D
 Acq On : 19 Sep 2024 19:28
 Operator : JU/RC
 Sample : P3878-02MEDL 5X
 Misc :
 ALS Vial : 13 Sample Multiplier: 1

Instrument :
 BNA_G
 ClientSampleId :
 DDC46MEDL

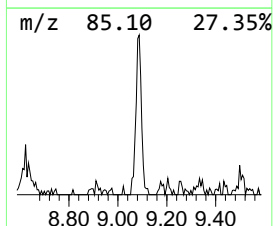
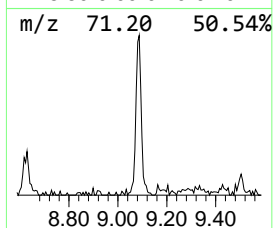
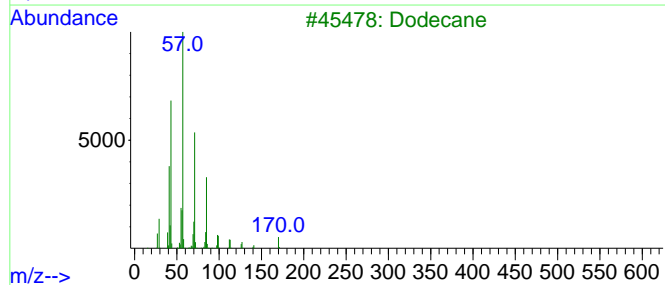
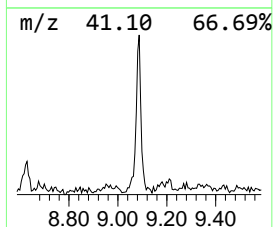
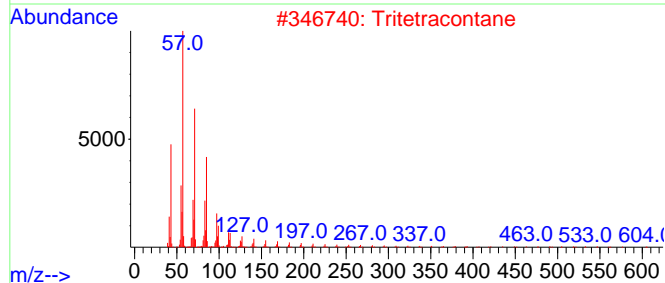
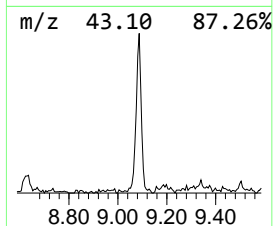
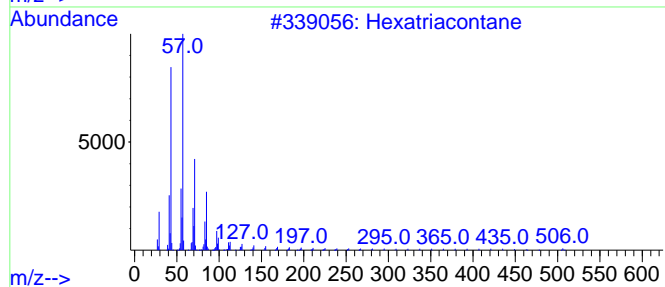
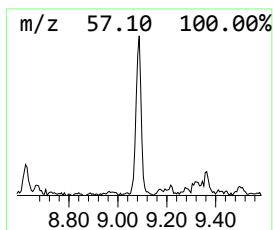
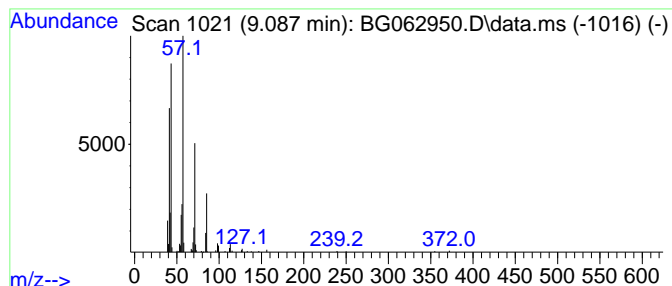
Quant Method : Z:\svoasrv\HPCHEM1\BNA_G\Methods\SFAM-EPA-BG091724.MA.M
 Quant Title : SVOA CALIBRATION

TIC Library : C:\DATABASE\NIST20.L
 TIC Integration Parameters: LSCINT.P

 Peak Number 11 (DEL) Alkane: Straight-Chai... Concentration Rank 2

R.T.	EstConc	Area	Relative to ISTD	R.T.
9.087	13.18 ng/ul	187406	1,4-Dichlorobenzene-d4	7.859

Hit#	of	5	Tentative ID	MW	MolForm	CAS#	Qual
1			Hexatriacontane	507	C36H74	000630-06-8	78
2			Tritetracontane	605	C43H88	007098-21-7	78
3			Dodecane	170	C12H26	000112-40-3	72
4			Decane, 3,6-dimethyl-	170	C12H26	017312-53-7	72
5			Octane, 3-ethyl-2,7-dimethyl-	170	C12H26	062183-55-5	72



Data Path : Z:\svoasrv\HPCHEM1\BNA_G\Data\BG091824\
 Data File : BG062950.D
 Acq On : 19 Sep 2024 19:28
 Operator : JU/RC
 Sample : P3878-02MEDL 5X
 Misc :
 ALS Vial : 13 Sample Multiplier: 1

Instrument :
 BNA_G
 ClientSampleId :
 DDC46MEDL

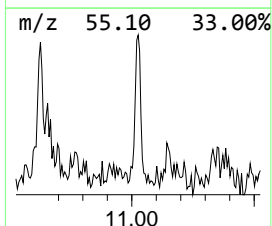
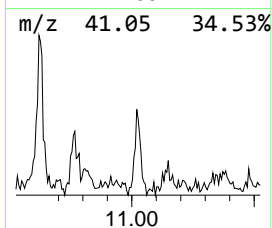
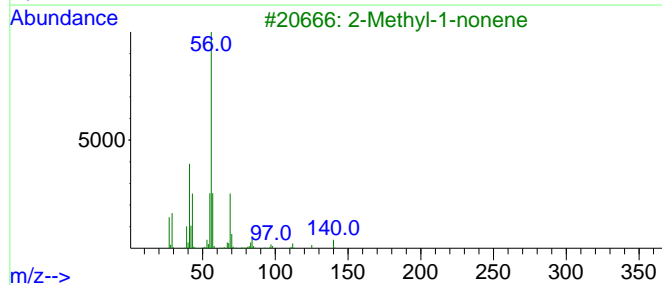
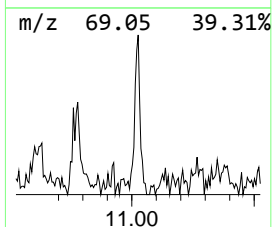
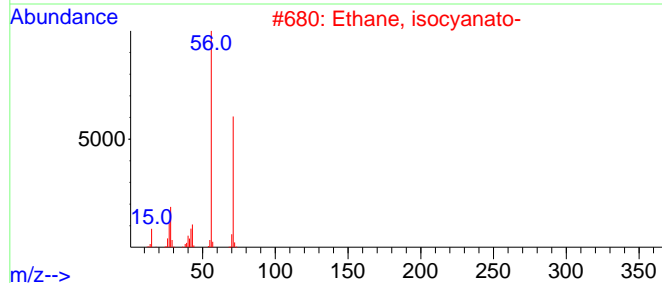
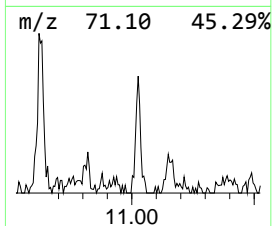
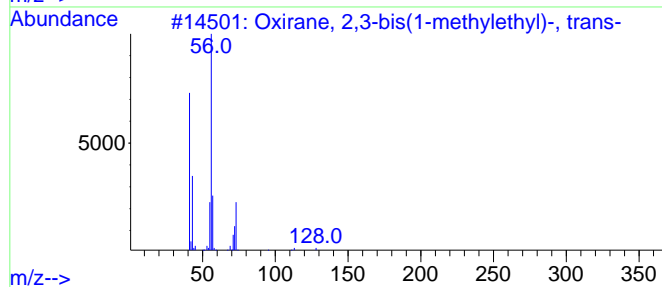
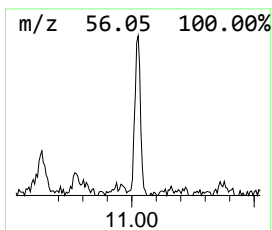
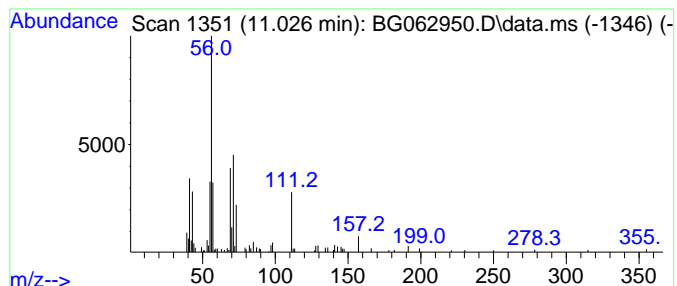
Quant Method : Z:\svoasrv\HPCHEM1\BNA_G\Methods\SFAM-EPA-BG091724.MA.M
 Quant Title : SVOA CALIBRATION

TIC Library : C:\DATABASE\NIST20.L
 TIC Integration Parameters: LSCINT.P

 Peak Number 12 unknown-03 Concentration Rank 9

R.T.	EstConc	Area	Relative to ISTD	R.T.
11.026	3.49 ng/ul	81626	Naphthalene-d8	10.644

Hit#	of 5	Tentative ID	MW	MolForm	CAS#	Qual
1		Oxirane, 2,3-bis(1-methylethyl)-...	128	C8H16O	054644-32-5	49
2		Ethane, isocyanato-	71	C3H5NO	000109-90-0	40
3		2-Methyl-1-nonene	140	C10H20	002980-71-4	38
4		1-Octene, 2-methyl-	126	C9H18	004588-18-5	35
5		1-Heptene, 2-methyl-	112	C8H16	015870-10-7	35



Data Path : Z:\svoasrv\HPCHEM1\BNA_G\Data\BG091824\
 Data File : BG062950.D
 Acq On : 19 Sep 2024 19:28
 Operator : JU/RC
 Sample : P3878-02MEDL 5X
 Misc :
 ALS Vial : 13 Sample Multiplier: 1

Instrument :
 BNA_G
 ClientSampleId :
 DDC46MEDL

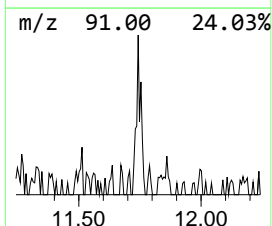
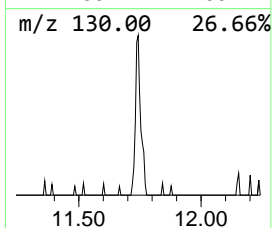
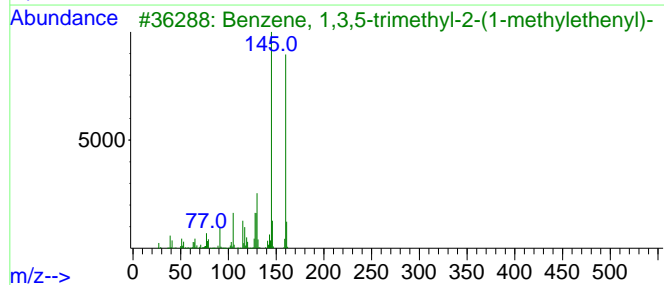
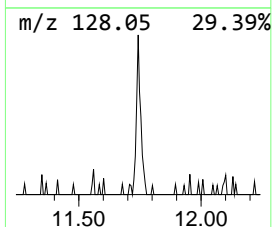
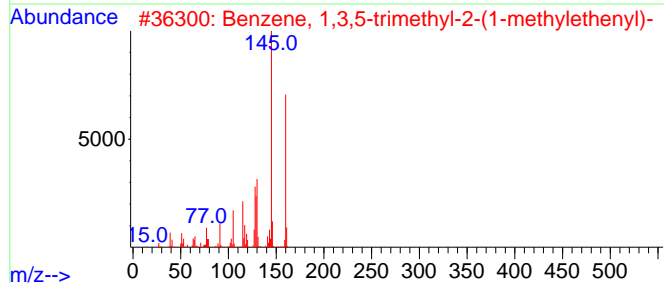
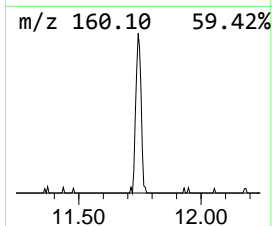
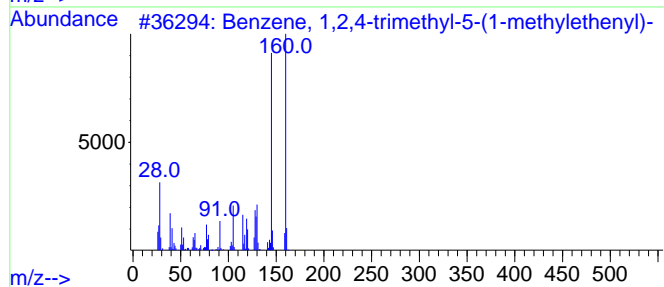
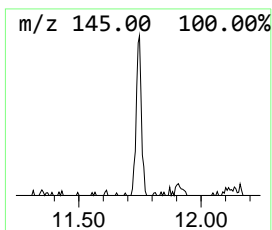
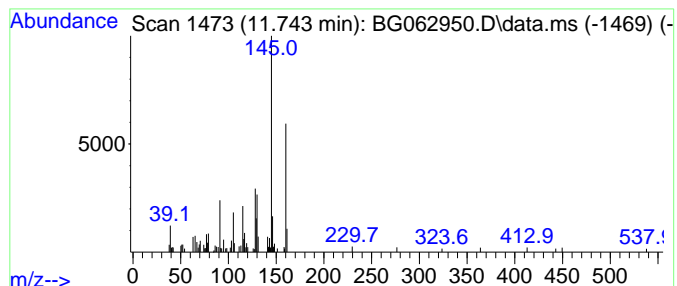
Quant Method : Z:\svoasrv\HPCHEM1\BNA_G\Methods\SFAM-EPA-BG091724.MA.M
 Quant Title : SVOA CALIBRATION

TIC Library : C:\DATABASE\NIST20.L
 TIC Integration Parameters: LSCINT.P

 Peak Number 13 Benzene, 1,2,4-trimethyl-5-... Concentration Rank 8

R.T.	EstConc	Area	Relative to ISTD	R.T.
11.743	3.62 ng/ul	84582	Naphthalene-d8	10.644

Hit#	of	5	Tentative ID	MW	MolForm	CAS#	Qual
1			Benzene, 1,2,4-trimethyl-5-(1-me...	160	C12H16	054340-84-0	91
2			Benzene, 1,3,5-trimethyl-2-(1-me...	160	C12H16	014679-13-1	91
3			Benzene, 1,3,5-trimethyl-2-(1-me...	160	C12H16	014679-13-1	90
4			Benzene, 1-(2-butenyl)-2,3-dimet...	160	C12H16	054340-85-1	87
5			Benzene, 1-(2-butenyl)-2,3-dimet...	160	C12H16	054340-85-1	87



Data Path : Z:\svoasrv\HPCHEM1\BNA_G\Data\BG091824\
 Data File : BG062950.D
 Acq On : 19 Sep 2024 19:28
 Operator : JU/RC
 Sample : P3878-02MEDL 5X
 Misc :
 ALS Vial : 13 Sample Multiplier: 1

Instrument :
 BNA_G
ClientSampleId :
 DDC46MEDL

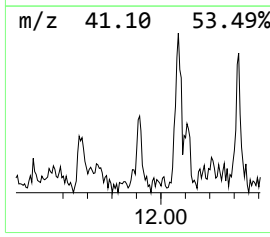
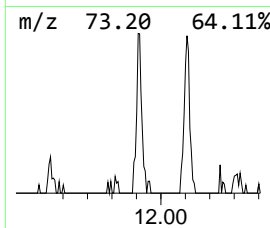
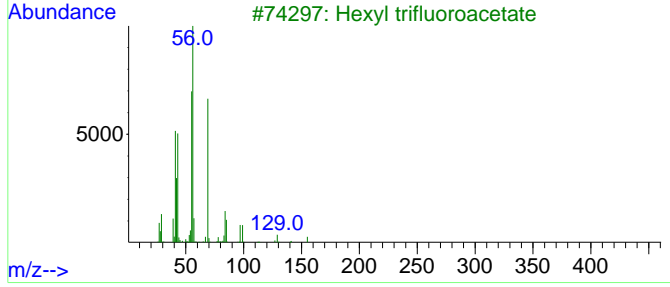
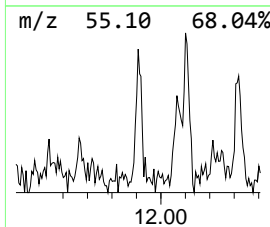
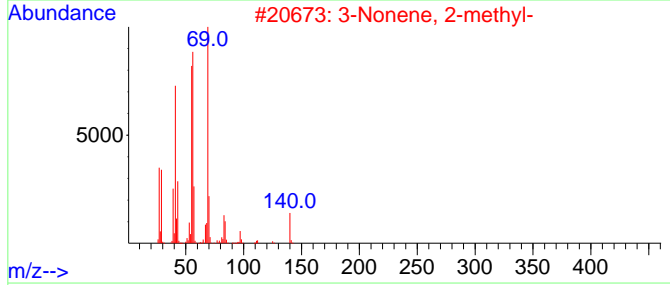
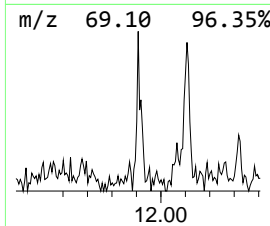
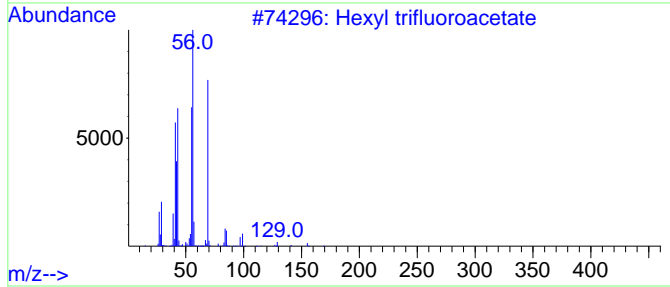
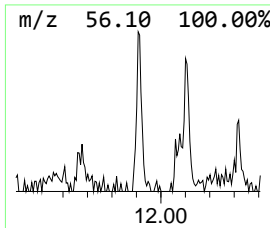
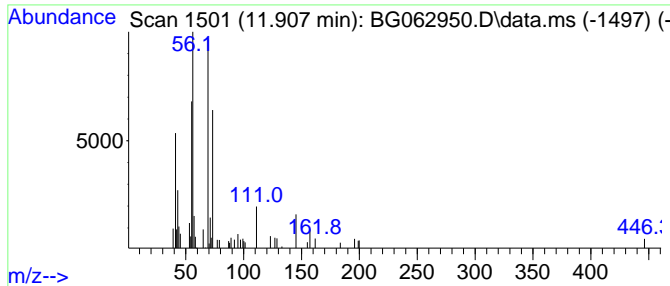
Quant Method : Z:\svoasrv\HPCHEM1\BNA_G\Methods\SFAM-EPA-BG091724.MA.M
 Quant Title : SVOA CALIBRATION

TIC Library : C:\DATABASE\NIST20.L
 TIC Integration Parameters: LSCINT.P

 Peak Number 14 Hexyl trifluoroacetate Concentration Rank 20

R.T.	EstConc	Area	Relative to ISTD	R.T.
11.907	2.22 ng/ul	51863	Naphthalene-d8	10.644

Hit#	of	5	Tentative ID	MW	MolForm	CAS#	Qual
1			Hexyl trifluoroacetate	198	C8H13F3O2	000400-61-3	53
2			3-Nonene, 2-methyl-	140	C10H20	053966-53-3	42
3			Hexyl trifluoroacetate	198	C8H13F3O2	000400-61-3	42
4			(S)-(+)-3-Methyl-1-pentanol	102	C6H14O	042072-39-9	36
5			Trifluoroacetic acid, 4-methylpe...	198	C8H13F3O2	000327-71-9	36



Data Path : Z:\svoasrv\HPCHEM1\BNA_G\Data\BG091824\
 Data File : BG062950.D
 Acq On : 19 Sep 2024 19:28
 Operator : JU/RC
 Sample : P3878-02MEDL 5X
 Misc :
 ALS Vial : 13 Sample Multiplier: 1

Instrument :
 BNA_G
 ClientSampleId :
 DDC46MEDL

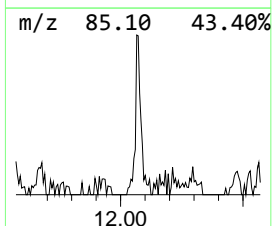
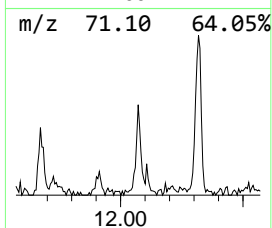
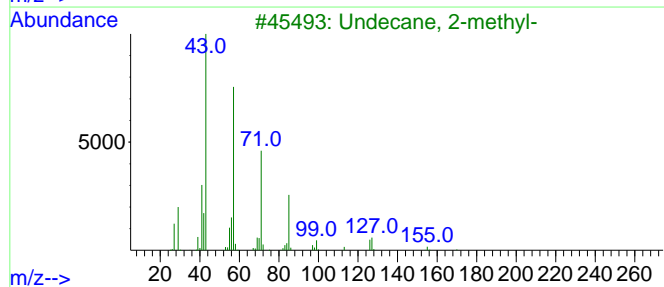
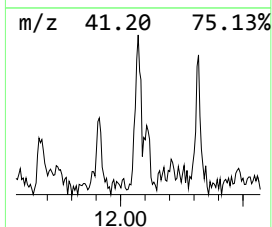
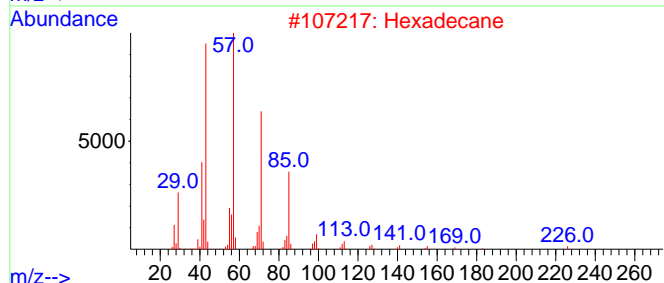
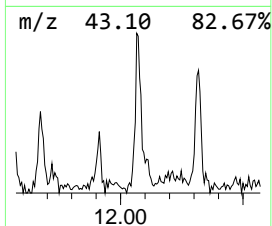
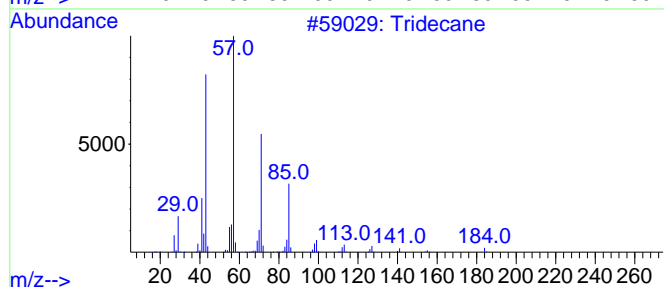
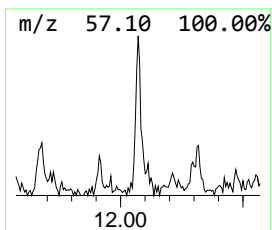
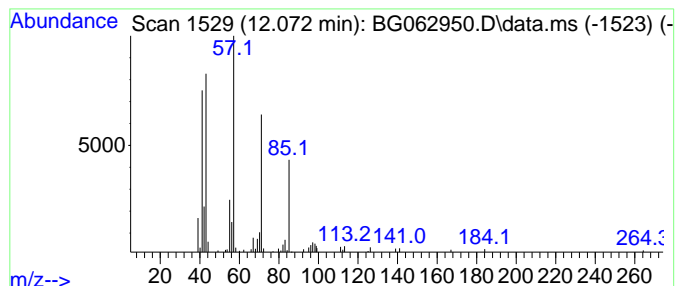
Quant Method : Z:\svoasrv\HPCHEM1\BNA_G\Methods\SFAM-EPA-BG091724.MA.M
 Quant Title : SVOA CALIBRATION

TIC Library : C:\DATABASE\NIST20.L
 TIC Integration Parameters: LSCINT.P

 Peak Number 15 (DEL) Alkane: Straight-Chai... Concentration Rank 11

R.T.	EstConc	Area	Relative to ISTD	R.T.
12.072	3.35 ng/ul	78324	Naphthalene-d8	10.644

Hit#	of 5	Tentative ID	MW	MolForm	CAS#	Qual
1		Tridecane	184	C13H28	000629-50-5	90
2		Hexadecane	226	C16H34	000544-76-3	72
3		Undecane, 2-methyl-	170	C12H26	007045-71-8	72
4		Tridecane	184	C13H28	000629-50-5	62
5		3-Ethyl-3-methylheptane	142	C10H22	017302-01-1	59



Data Path : Z:\svoasrv\HPCHEM1\BNA_G\Data\BG091824\
 Data File : BG062950.D
 Acq On : 19 Sep 2024 19:28
 Operator : JU/RC
 Sample : P3878-02MEDL 5X
 Misc :
 ALS Vial : 13 Sample Multiplier: 1

Instrument :
 BNA_G
 ClientSampleId :
 DDC46MEDL

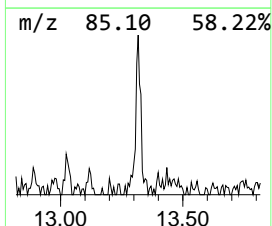
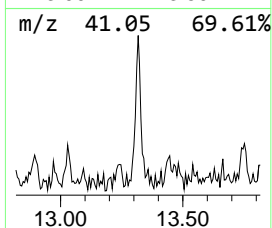
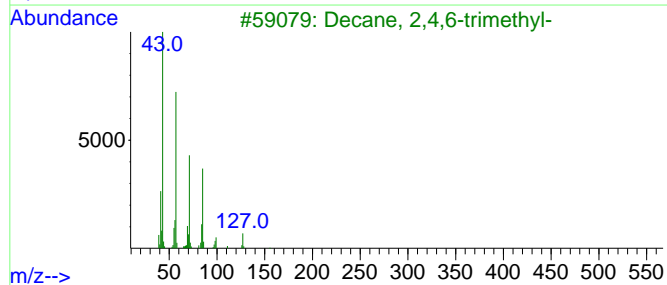
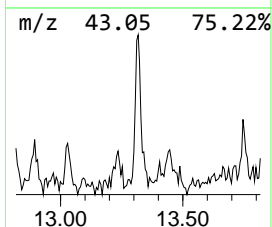
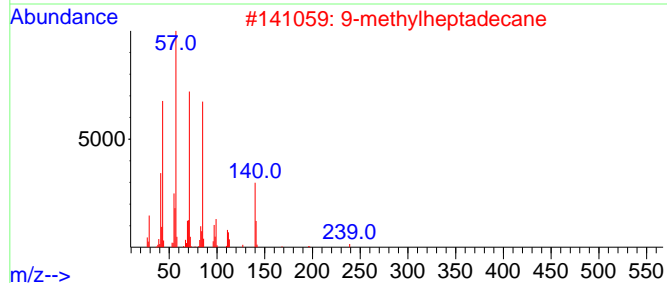
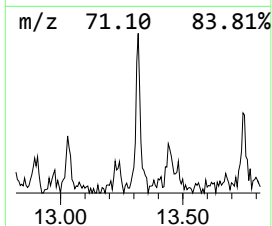
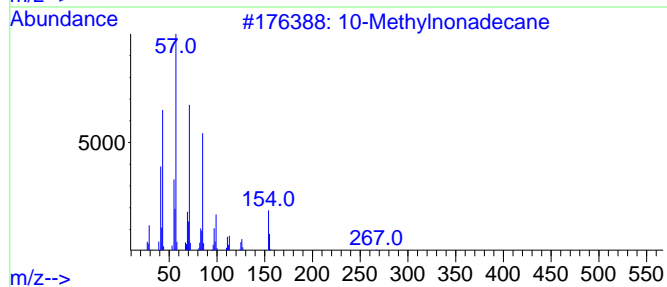
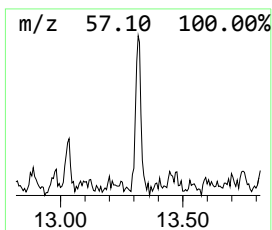
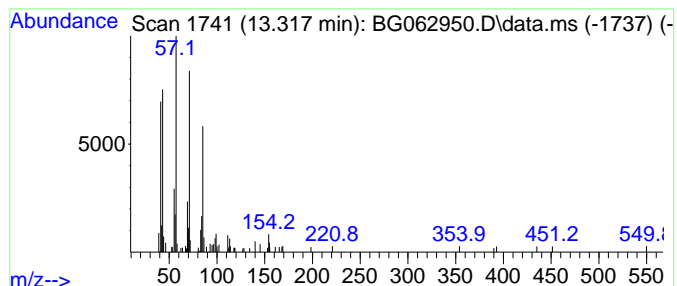
Quant Method : Z:\svoasrv\HPCHEM1\BNA_G\Methods\SFAM-EPA-BG091724.MA.M
 Quant Title : SVOA CALIBRATION

TIC Library : C:\DATABASE\NIST20.L
 TIC Integration Parameters: LSCINT.P

 Peak Number 16 (DEL) Alkane: Straight-Chai... Concentration Rank 12

R.T.	EstConc	Area	Relative to ISTD	R.T.
13.317	3.20 ng/ul	81013	Acenaphthene-d10	14.492

Hit#	of 5	Tentative ID	MW	MolForm	CAS#	Qual
1		10-Methylnonadecane	282	C20H42	056862-62-5	86
2		9-methylheptadecane	254	C18H38	026741-18-4	80
3		Decane, 2,4,6-trimethyl-	184	C13H28	062108-27-4	78
4		Eicosane, 10-methyl-	296	C21H44	054833-23-7	72
5		Sulfurous acid, hexyl pentyl ester	236	C11H24O3S	1000309-14-1	64



Data Path : Z:\svoasrv\HPCHEM1\BNA_G\Data\BG091824\
 Data File : BG062950.D
 Acq On : 19 Sep 2024 19:28
 Operator : JU/RC
 Sample : P3878-02MEDL 5X
 Misc :
 ALS Vial : 13 Sample Multiplier: 1

Instrument :
 BNA_G
 ClientSampleId :
 DDC46MEDL

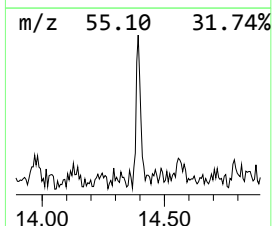
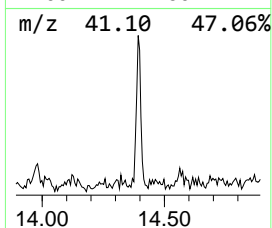
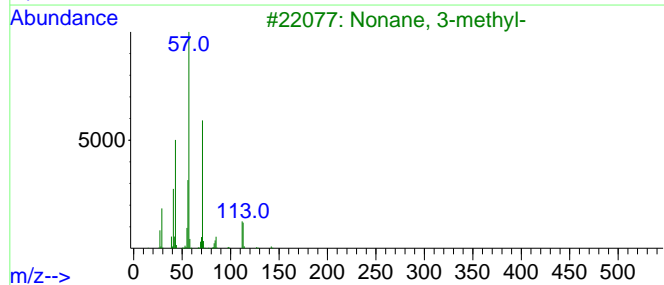
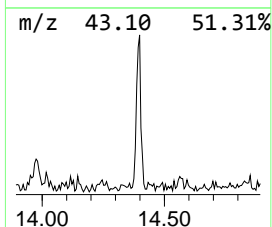
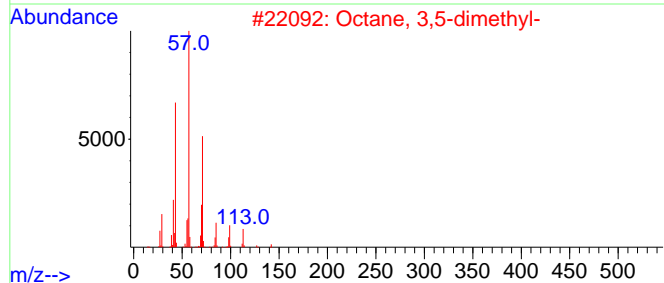
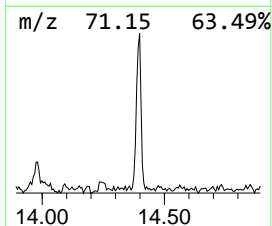
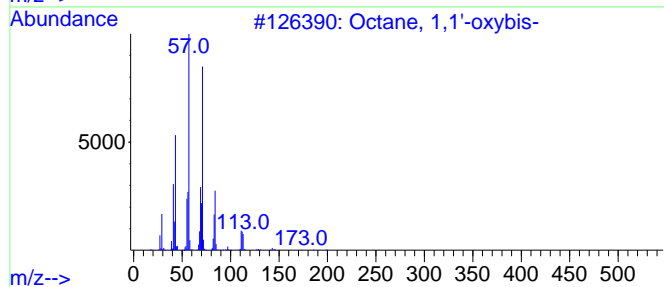
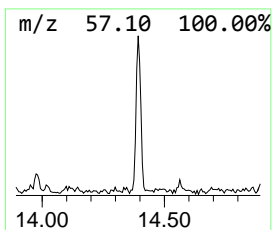
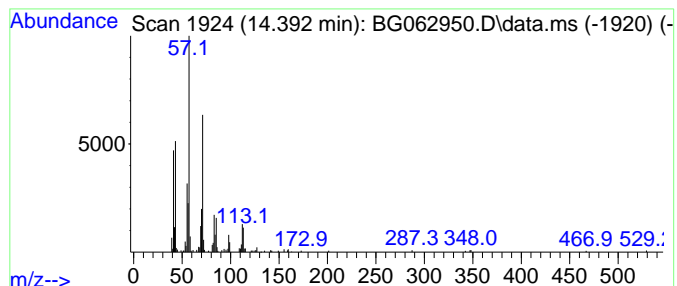
Quant Method : Z:\svoasrv\HPCHEM1\BNA_G\Methods\SFAM-EPA-BG091724.MA.M
 Quant Title : SVOA CALIBRATION

TIC Library : C:\DATABASE\NIST20.L
 TIC Integration Parameters: LSCINT.P

 Peak Number 17 Octane, 1,1'-oxybis- Concentration Rank 4

R.T.	EstConc	Area	Relative to ISTD	R.T.
14.392	6.73 ng/ul	170267	Acenaphthene-d10	14.492

Hit#	of	5	Tentative ID	MW	MolForm	CAS#	Qual
1			Octane, 1,1'-oxybis-	242	C16H34O	000629-82-3	86
2			Octane, 3,5-dimethyl-	142	C10H22	015869-93-9	74
3			Nonane, 3-methyl-	142	C10H22	005911-04-6	72
4			Decane, 2,6,7-trimethyl-	184	C13H28	062108-25-2	72
5			Octane, 3,5-dimethyl-	142	C10H22	015869-93-9	68



Data Path : Z:\svoasrv\HPCHEM1\BNA_G\Data\BG091824\
 Data File : BG062950.D
 Acq On : 19 Sep 2024 19:28
 Operator : JU/RC
 Sample : P3878-02MEDL 5X
 Misc :
 ALS Vial : 13 Sample Multiplier: 1

Instrument :
 BNA_G
 ClientSampleId :
 DDC46MEDL

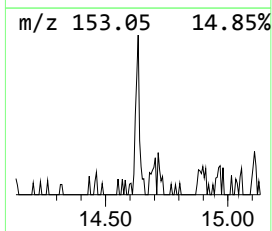
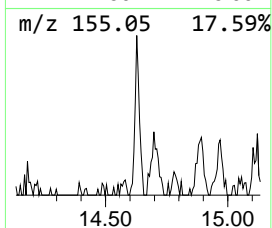
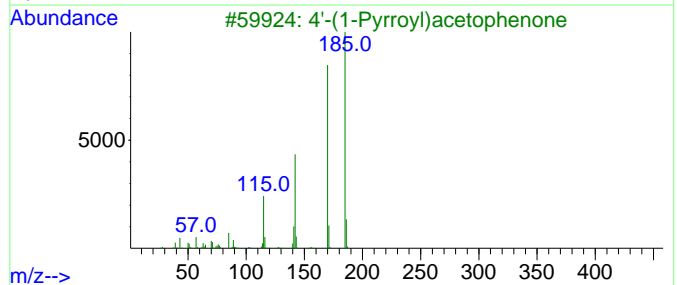
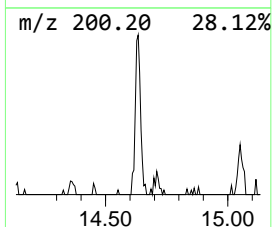
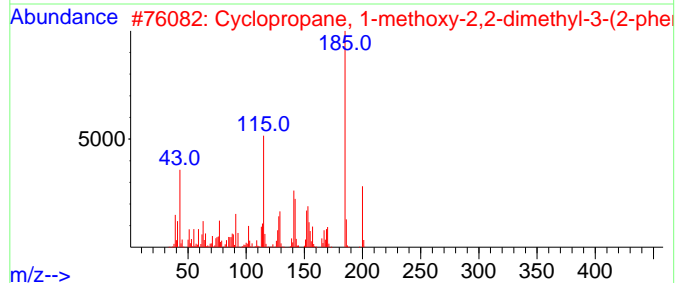
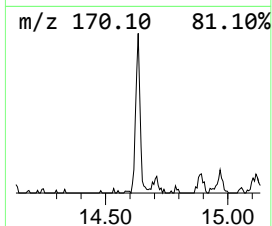
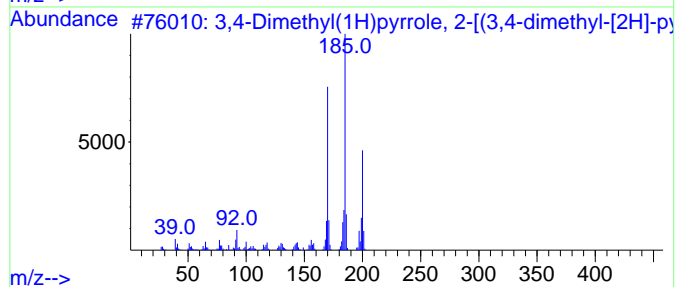
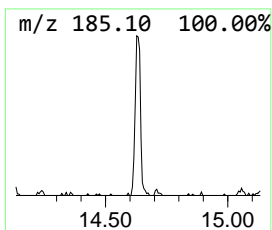
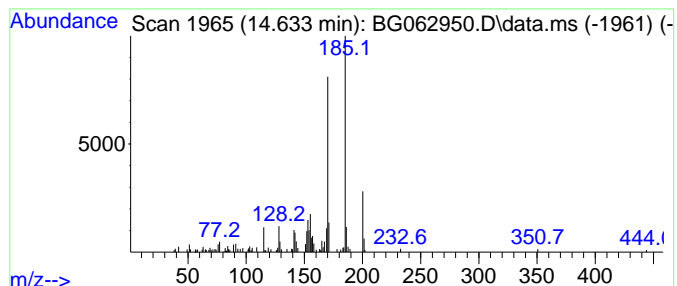
Quant Method : Z:\svoasrv\HPCHEM1\BNA_G\Methods\SFAM-EPA-BG091724.MA.M
 Quant Title : SVOA CALIBRATION

TIC Library : C:\DATABASE\NIST20.L
 TIC Integration Parameters: LSCINT.P

 Peak Number 18 3,4-Dimethyl(1H)pyrrole, 2-... Concentration Rank 6

R.T.	EstConc	Area	Relative to ISTD	R.T.
14.633	4.67 ng/ul	118193	Acenaphthene-d10	14.492

Hit#	of	5	Tentative ID	MW	MolForm	CAS#	Qual
1			3,4-Dimethyl(1H)pyrrole, 2-[(3,4...	200	C13H16N2	065539-79-9	83
2			Cyclopropane, 1-methoxy-2,2-dime...	200	C14H16O	1000271-83-0	60
3			4'-(1-Pyrrolyl)acetophenone	185	C12H11NO	022106-37-2	58
4			Methyl 2-diethylamino-3-methyl-b...	185	C10H19NO2	075122-81-5	53
5			4,6,8-Trimethylazulene	170	C13H14	000941-81-1	45



Data Path : Z:\svoasrv\HPCHEM1\BNA_G\Data\BG091824\
 Data File : BG062950.D
 Acq On : 19 Sep 2024 19:28
 Operator : JU/RC
 Sample : P3878-02MEDL 5X
 Misc :
 ALS Vial : 13 Sample Multiplier: 1

Instrument :
 BNA_G
 ClientSampleId :
 DDC46MEDL

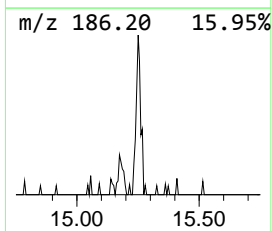
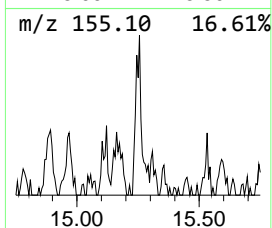
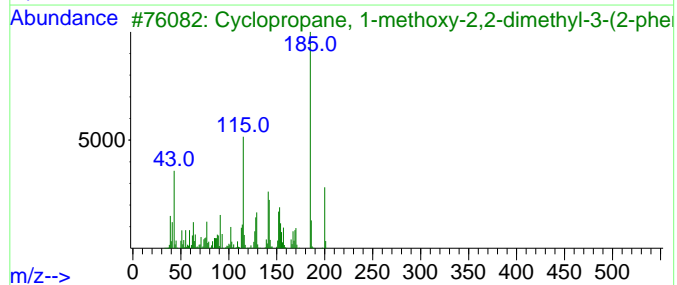
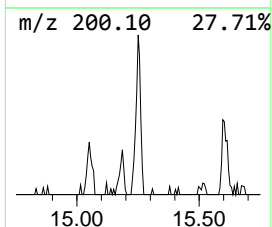
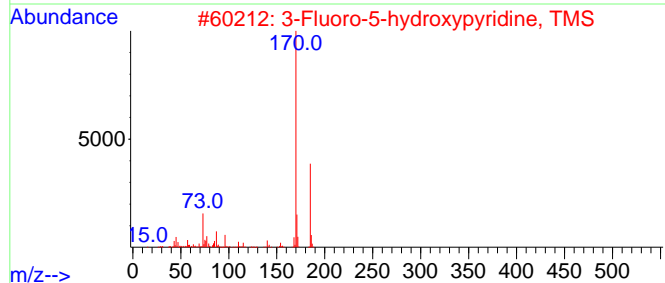
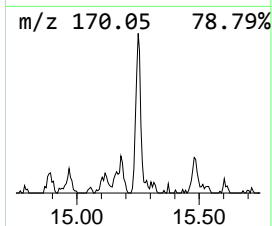
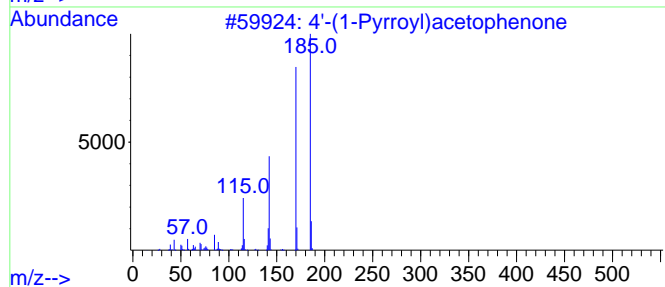
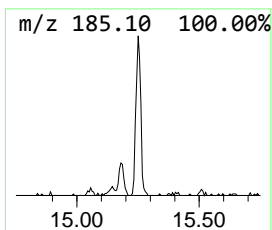
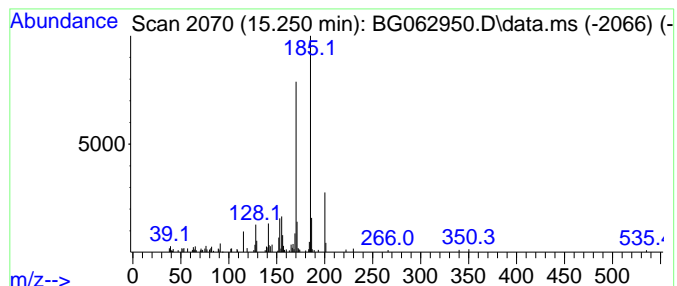
Quant Method : Z:\svoasrv\HPCHEM1\BNA_G\Methods\SFAM-EPA-BG091724.MA.M
 Quant Title : SVOA CALIBRATION

TIC Library : C:\DATABASE\NIST20.L
 TIC Integration Parameters: LSCINT.P

 Peak Number 19 4'-(1-Pyrrolyl)acetophenone Concentration Rank 7

R.T.	EstConc	Area	Relative to ISTD	R.T.
15.250	4.54 ng/ul	114712	Acenaphthene-d10	14.492

Hit#	of	5	Tentative ID	MW	MolForm	CAS#	Qual
1			4'-(1-Pyrrolyl)acetophenone	185	C12H11NO	022106-37-2	64
2			3-Fluoro-5-hydroxypyridine, TMS	185	C8H12FNOSi	1000494-89-5	64
3			Cyclopropane, 1-methoxy-2,2-dime...	200	C14H16O	1000271-83-0	43
4			Naphthalene, 1,4,6-trimethyl-	170	C13H14	002131-42-2	41
5			Naphthalene, 2,3,6-trimethyl-	170	C13H14	000829-26-5	41



Data Path : Z:\svoasrv\HPCHEM1\BNA_G\Data\BG091824\
 Data File : BG062950.D
 Acq On : 19 Sep 2024 19:28
 Operator : JU/RC
 Sample : P3878-02MEDL 5X
 Misc :
 ALS Vial : 13 Sample Multiplier: 1

Instrument :
 BNA_G
 ClientSampleId :
 DDC46MEDL

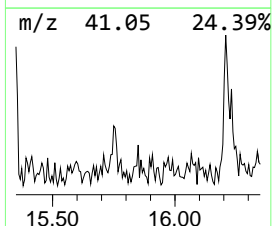
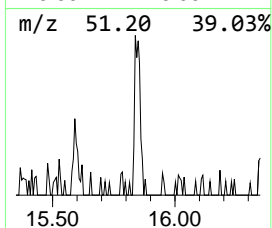
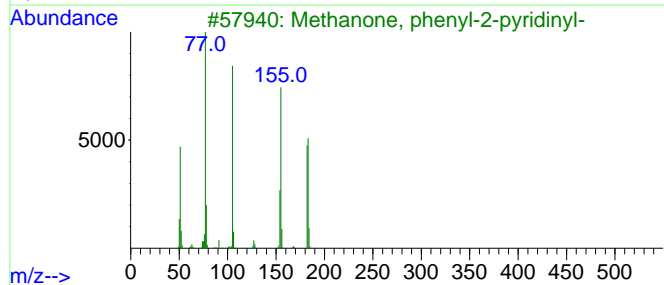
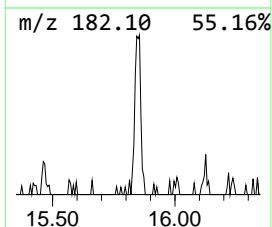
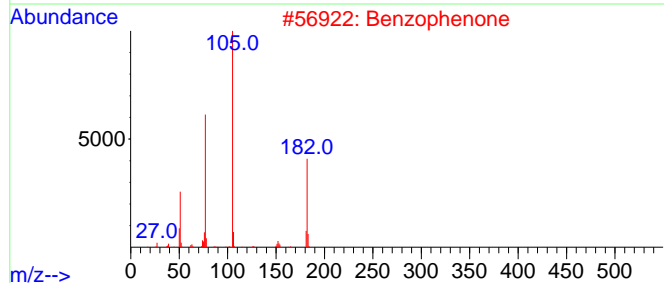
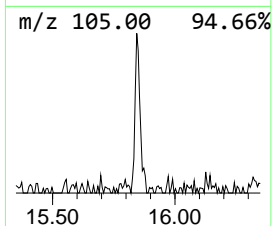
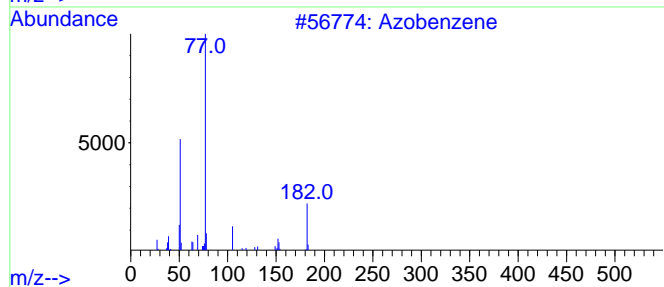
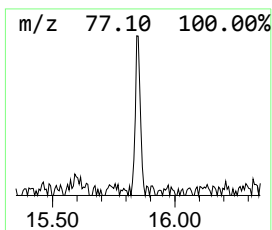
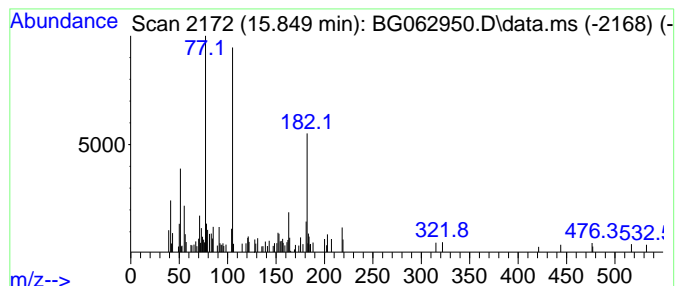
Quant Method : Z:\svoasrv\HPCHEM1\BNA_G\Methods\SFAM-EPA-BG091724.MA.M
 Quant Title : SVOA CALIBRATION

TIC Library : C:\DATABASE\NIST20.L
 TIC Integration Parameters: LSCINT.P

 Peak Number 20 Azobenzene Concentration Rank 16

R.T.	EstConc	Area	Relative to ISTD	R.T.
15.850	2.42 ng/ul	61226	Acenaphthene-d10	14.492

Hit#	of	5	Tentative ID	MW	MolForm	CAS#	Qual
1			Azobenzene	182	C12H10N2	000103-33-3	87
2			Benzophenone	182	C13H10O	000119-61-9	80
3			Methanone, phenyl-2-pyridinyl-	183	C12H9NO	000091-02-1	50
4			Benzophenone	182	C13H10O	000119-61-9	49
5			Azobenzene	182	C12H10N2	000103-33-3	49



Data Path : Z:\svoasrv\HPCHEM1\BNA_G\Data\BG091824\
 Data File : BG062950.D
 Acq On : 19 Sep 2024 19:28
 Operator : JU/RC
 Sample : P3878-02MEDL 5X
 Misc :
 ALS Vial : 13 Sample Multiplier: 1

Instrument :
 BNA_G
 ClientSampleId :
 DDC46MEDL

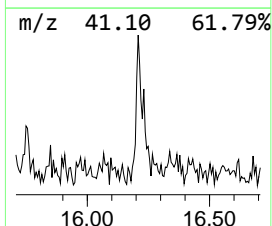
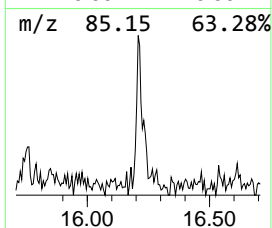
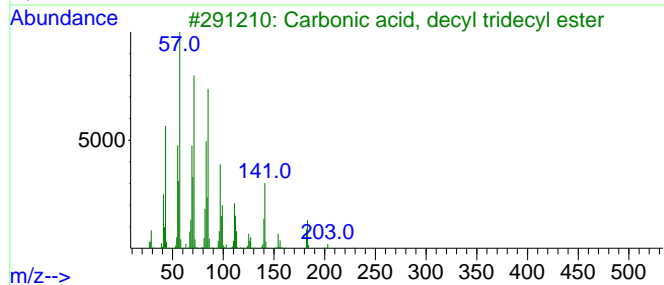
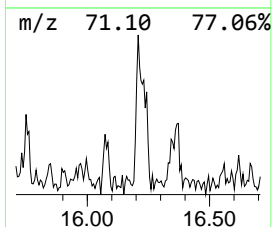
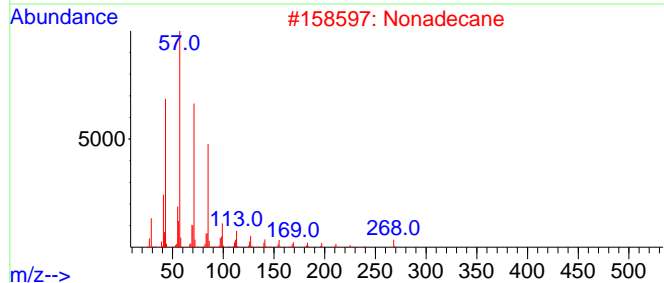
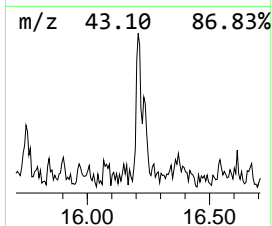
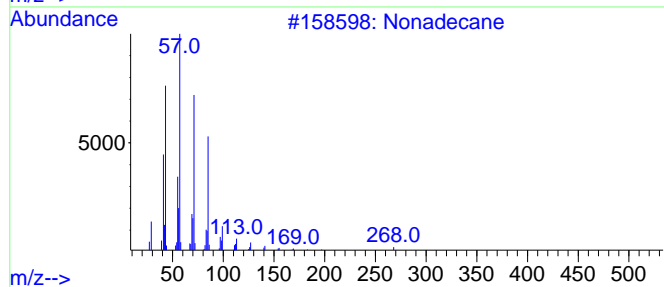
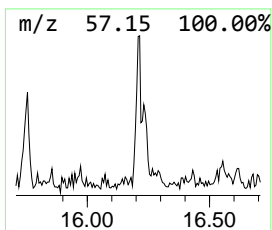
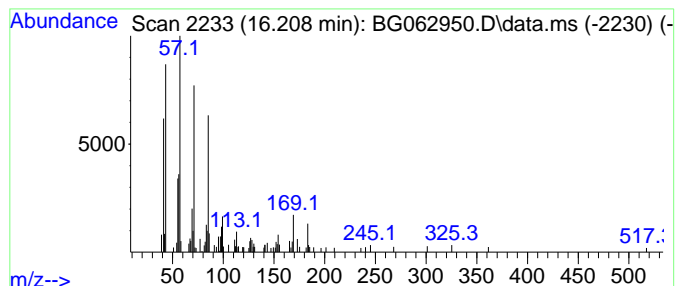
Quant Method : Z:\svoasrv\HPCHEM1\BNA_G\Methods\SFAM-EPA-BG091724.MA.M
 Quant Title : SVOA CALIBRATION

TIC Library : C:\DATABASE\NIST20.L
 TIC Integration Parameters: LSCINT.P

 Peak Number 21 (DEL) Alkane: Straight-Chai... Concentration Rank 18

R.T.	EstConc	Area	Relative to ISTD	R.T.
16.208	2.30 ng/ul	73529	Phenanthrene-d10	17.236

Hit#	of	5	Tentative ID	MW	MolForm	CAS#	Qual
1			Nonadecane	268	C19H40	000629-92-5	87
2			Nonadecane	268	C19H40	000629-92-5	87
3			Carbonic acid, decyl tridecyl ester	384	C24H48O3	1000383-16-2	80
4			Pentacosane	352	C25H52	000629-99-2	80
5			Tridecane	184	C13H28	000629-50-5	72



Data Path : Z:\svoasrv\HPCHEM1\BNA_G\Data\BG091824\
 Data File : BG062950.D
 Acq On : 19 Sep 2024 19:28
 Operator : JU/RC
 Sample : P3878-02MEDL 5X
 Misc :
 ALS Vial : 13 Sample Multiplier: 1

Instrument :
 BNA_G
 ClientSampleId :
 DDC46MEDL

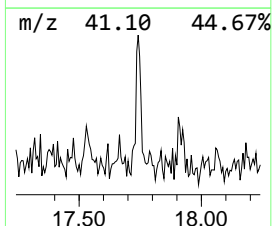
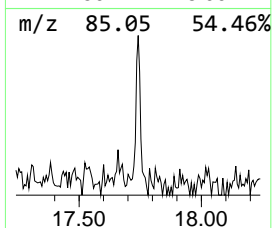
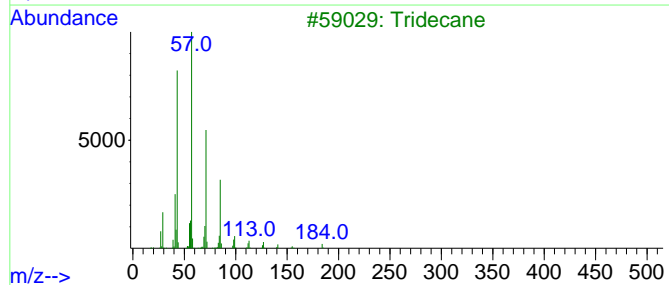
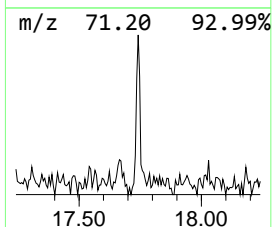
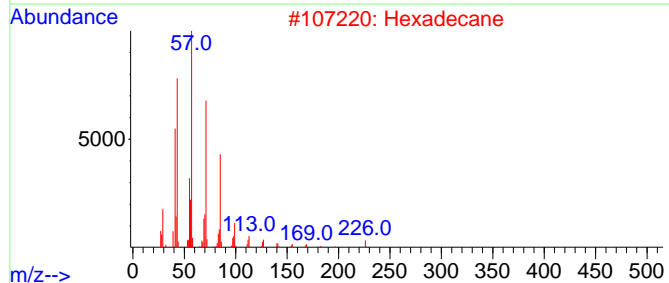
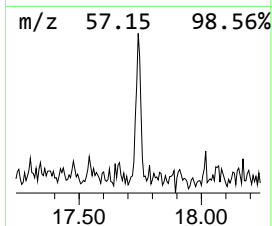
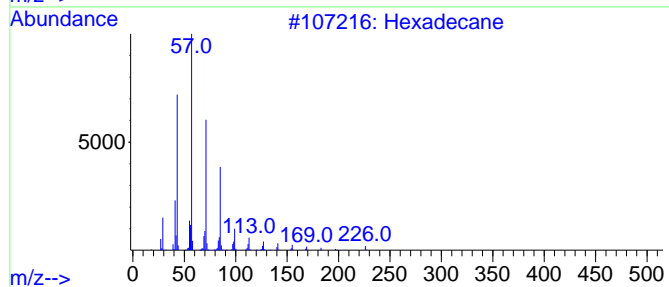
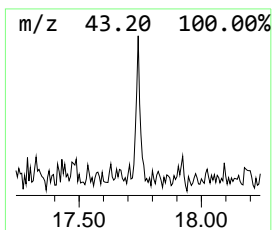
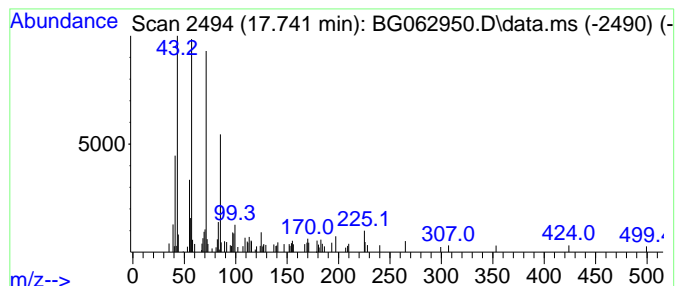
Quant Method : Z:\svoasrv\HPCHEM1\BNA_G\Methods\SFAM-EPA-BG091724.MA.M
 Quant Title : SVOA CALIBRATION

TIC Library : C:\DATABASE\NIST20.L
 TIC Integration Parameters: LSCINT.P

 Peak Number 22 (DEL) Alkane: Straight-Chai... Concentration Rank 22

R.T.	EstConc	Area	Relative to ISTD	R.T.
17.741	2.03 ng/ul	64745	Phenanthrene-d10	17.236

Hit#	of 5	Tentative ID	MW	MolForm	CAS#	Qual
1		Hexadecane	226	C16H34	000544-76-3	89
2		Hexadecane	226	C16H34	000544-76-3	89
3		Tridecane	184	C13H28	000629-50-5	76
4		Hexadecane, 2-methyl-	240	C17H36	001560-92-5	72
5		Tridecane	184	C13H28	000629-50-5	68



Data Path : Z:\svoasrv\HPCHEM1\BNA_G\Data\BG091824\
 Data File : BG062950.D
 Acq On : 19 Sep 2024 19:28
 Operator : JU/RC
 Sample : P3878-02MEDL 5X
 Misc :
 ALS Vial : 13 Sample Multiplier: 1

Instrument :
 BNA_G
 ClientSampleId :
 DDC46MEDL

Quant Method : Z:\svoasrv\HPCHEM1\BNA_G\Methods\SFAM-EPA-BG091724.MA.M
 Quant Title : SVOA CALIBRATION

TIC Library : C:\DATABASE\NIST0.L
 TIC Integration Parameters: LSCINT.P

TIC Top Hit name	RT	EstConc	Units	Response	--Internal Standard--			
					#	RT	Resp	Conc
(DEL) Alkane: S...	5.885	6.8	ng/ul	97131	1	7.859	284381	20.0
(DEL) Alkane: S...	6.913	2.7	ng/ul	38545	1	7.859	284381	20.0
Benzene, 1-ethy...	6.954	3.0	ng/ul	43020	1	7.859	284381	20.0
Benzene, 1,2,3-...	7.083	2.3	ng/ul	32132	1	7.859	284381	20.0
(DEL) Alkane: S...	7.489	19.8	ng/ul	281609	1	7.859	284381	20.0
1-Hexanol, 2-et...	7.918	5.9	ng/ul	83679	1	7.859	284381	20.0
unknown-01	7.970	2.1	ng/ul	30243	1	7.859	284381	20.0
1,1-Hexylenedio...	8.076	3.4	ng/ul	47994	1	7.859	284381	20.0
unknown-02	8.393	3.0	ng/ul	43079	1	7.859	284381	20.0
(DEL) Alkane: S...	8.623	2.3	ng/ul	33301	1	7.859	284381	20.0
(DEL) Alkane: S...	9.087	13.2	ng/ul	187406	1	7.859	284381	20.0
unknown-03	11.026	3.5	ng/ul	81626	2	10.644	467639	20.0
Benzene, 1,2,4-...	11.743	3.6	ng/ul	84582	2	10.644	467639	20.0
Hexyl trifluoro...	11.907	2.2	ng/ul	51863	2	10.644	467639	20.0
(DEL) Alkane: S...	12.072	3.4	ng/ul	78324	2	10.644	467639	20.0
(DEL) Alkane: S...	13.317	3.2	ng/ul	81013	3	14.492	505851	20.0
Octane, 1,1'-ox...	14.392	6.7	ng/ul	170267	3	14.492	505851	20.0
3,4-Dimethyl(1H...	14.633	4.7	ng/ul	118193	3	14.492	505851	20.0
4'-(1-Pyrroyl)a...	15.250	4.5	ng/ul	114712	3	14.492	505851	20.0
Azobenzene	15.850	2.4	ng/ul	61226	3	14.492	505851	20.0
(DEL) Alkane: S...	16.208	2.3	ng/ul	73529	4	17.236	638260	20.0
(DEL) Alkane: S...	17.741	2.0	ng/ul	64745	4	17.236	638260	20.0