

Data Path : Z:\HPCHEM1\BNA G\DATA\BG092115\
 Data File : BG018792.D
 Acq On : 21 Sep 2015 21:11
 Operator : TP
 Sample : G3696-13
 Misc :
 ALS Vial : 17 Sample Multiplier: 1

Instrument :
 BNA_G
 ClientSampleId :
 C0AN4

Integration Parameters: LSCINT.P

Integrator: RTE
 Smoothing : OFF
 Sampling : 1
 Start Thrs: 0.2
 Stop Thrs : 0

Filtering: 5
 Min Area: 0.1 % of largest Peak
 Max Peaks: 100
 Peak Location: TOP

If leading or trailing edge < 100 prefer < Baseline drop else tangent >
 Peak separation: 5

Method : Z:\HPCHEM1\BNA G\METHODS\SOM02.2-EPA-BG091015.M
 Title : SVOA CALIBRATION

Signal : TIC

peak #	R.T. min	first scan	max scan	last scan	PK TY	peak height	corr. area	corr. % max.	% of total
1	2.886	4	8	13	rVV2	20476	29798	1.51%	0.189%
2	2.927	13	15	24	rVB4	4162	8594	0.44%	0.055%
3	3.104	40	45	52	rBV	48881	80469	4.08%	0.510%
4	3.180	52	58	74	rVB	661532	953063	48.33%	6.044%
5	3.438	99	102	105	rBV4	2471	2892	0.15%	0.018%
6	5.113	382	387	389	rBV4	1302	2233	0.11%	0.014%
7	7.164	731	736	743	rVB2	24944	43027	2.18%	0.273%
8	7.322	756	763	772	rBV	127045	208351	10.57%	1.321%
9	7.534	793	799	810	rVB	112447	197017	9.99%	1.249%
10	7.998	872	878	888	rVB	154945	259359	13.15%	1.645%
11	8.703	991	998	1007	rBV	88356	151859	7.70%	0.963%
12	9.155	1068	1075	1082	rBV	139801	248194	12.59%	1.574%
13	9.884	1187	1199	1209	rBV	113056	206301	10.46%	1.308%
14	10.424	1283	1291	1300	rBV	174419	309611	15.70%	1.963%
15	10.800	1346	1355	1363	rBV	228819	400125	20.29%	2.537%
16	10.936	1375	1378	1383	rVB4	1836	2552	0.13%	0.016%
17	12.681	1672	1675	1680	rVB2	1270	2006	0.10%	0.013%
18	14.026	1898	1904	1911	rBV	494284	685169	34.75%	4.345%
19	14.144	1920	1924	1928	rVB2	1423	2017	0.10%	0.013%
20	14.320	1947	1954	1962	rBV	501670	788595	39.99%	5.001%
21	14.625	1999	2006	2014	rBV2	410495	647412	32.83%	4.106%
22	14.831	2032	2041	2051	rBV3	29848	64111	3.25%	0.407%
23	15.195	2098	2103	2104	rBV2	4729	5951	0.30%	0.038%
24	15.213	2104	2106	2108	rVV3	1698	2274	0.12%	0.014%
25	15.618	2168	2175	2182	rVB	746567	1144262	58.03%	7.257%
26	15.730	2188	2194	2209	rVV	209166	309538	15.70%	1.963%
27	15.853	2210	2215	2220	rVV3	8579	12876	0.65%	0.082%
28	16.053	2246	2249	2253	rBV5	1940	3310	0.17%	0.021%
29	16.182	2268	2271	2274	rVV4	1712	2041	0.10%	0.013%
30	16.300	2288	2291	2294	rBV2	2372	2844	0.14%	0.018%
31	16.506	2320	2326	2329	rBV4	2301	3345	0.17%	0.021%
32	16.770	2370	2371	2375	rBV2	2232	1978	0.10%	0.013%
33	16.887	2390	2391	2395	rBV3	1761	2310	0.12%	0.015%
34	17.023	2411	2414	2420	rVB4	1649	2770	0.14%	0.018%

Data Path : Z:\HPCHEM1\BNA G\DATA\BG092115\
 Data File : BG018792.D
 Acq On : 21 Sep 2015 21:11
 Operator : TP
 Sample : G3696-13
 Misc :
 ALS Vial : 17 Sample Multiplier: 1

Instrument :
 BNA_G
 ClientSampleId :
 C0AN4

Integration Parameters: LSCINT.P

Integrator: RTE
 Smoothing : OFF
 Sampling : 1
 Start Thrs: 0.2
 Stop Thrs : 0

Filtering: 5
 Min Area: 0.1 % of largest Peak
 Max Peaks: 100
 Peak Location: TOP

If leading or trailing edge < 100 prefer < Baseline drop else tangent >
 Peak separation: 5

Method : Z:\HPCHEM1\BNA G\METHODS\SOM02.2-EPA-BG091015.M
 Title : SVOA CALIBRATION

35	17.158	2434	2437	2441	rVB4	4145	6419	0.33%	0.041%
36	17.316	2459	2464	2466	rBV3	1637	2911	0.15%	0.018%
37	17.369	2466	2473	2482	rVV	643659	944430	47.89%	5.989%
38	17.469	2482	2490	2499	rVV2	979851	1513887	76.77%	9.601%
39	17.557	2502	2505	2508	rVB2	2013	2604	0.13%	0.017%
40	18.110	2596	2599	2601	rBV2	1833	2484	0.13%	0.016%
41	18.403	2648	2649	2652	rBV3	2399	2044	0.10%	0.013%
42	18.585	2679	2680	2683	rVB3	2692	2510	0.13%	0.016%
43	18.644	2688	2690	2693	rBV3	2528	2967	0.15%	0.019%
44	18.715	2700	2702	2706	rVB3	2150	2222	0.11%	0.014%
45	19.185	2780	2782	2784	rBV3	3182	2870	0.15%	0.018%
46	19.543	2841	2843	2845	rVB2	4456	2785	0.14%	0.018%
47	19.643	2856	2860	2864	rVB3	11893	15244	0.77%	0.097%
48	19.755	2871	2879	2888	rBV	1385767	1971934	100.00%	12.505%
49	19.878	2898	2900	2902	rBV3	4349	3604	0.18%	0.023%
50	19.896	2902	2903	2904	rVB	5757	2029	0.10%	0.013%
51	19.913	2904	2906	2908	rBV2	3226	3410	0.17%	0.022%
52	20.289	2968	2970	2972	rBV2	3344	4028	0.20%	0.026%
53	20.530	3009	3011	3013	rBV3	3920	2713	0.14%	0.017%
54	21.024	3093	3095	3096	rVB2	3351	2182	0.11%	0.014%
55	21.047	3097	3099	3101	rBV3	3556	2966	0.15%	0.019%
56	21.124	3110	3112	3114	rBV3	5086	3417	0.17%	0.022%
57	21.194	3122	3124	3125	rVB2	6145	3415	0.17%	0.022%
58	21.212	3125	3127	3128	rBV2	4623	3548	0.18%	0.023%
59	21.353	3146	3151	3153	rBV5	7186	11404	0.58%	0.072%
60	21.623	3190	3197	3206	rBV	771169	1220840	61.91%	7.742%
61	21.893	3241	3243	3244	rVB2	4427	2194	0.11%	0.014%
62	22.181	3290	3292	3293	rVB2	4504	2670	0.14%	0.017%
63	22.504	3345	3347	3348	rBV2	3665	2798	0.14%	0.018%
64	22.540	3351	3353	3355	rBV3	5486	6052	0.31%	0.038%
65	22.927	3417	3419	3421	rBV3	5190	5017	0.25%	0.032%
66	23.016	3433	3434	3437	rBV3	3939	3730	0.19%	0.024%
67	23.092	3445	3447	3453	rVB6	7791	10656	0.54%	0.068%
68	23.656	3541	3543	3547	rBV5	3716	4342	0.22%	0.028%
69	23.691	3547	3549	3552	rBV3	8516	13045	0.66%	0.083%
70	23.815	3568	3570	3573	rVB4	4161	3371	0.17%	0.021%
71	23.885	3578	3582	3584	rBV5	6082	8697	0.44%	0.055%

Data Path : Z:\HPCHEM1\BNA G\DATA\BG092115\
 Data File : BG018792.D
 Acq On : 21 Sep 2015 21:11
 Operator : TP
 Sample : G3696-13
 Misc :
 ALS Vial : 17 Sample Multiplier: 1

Instrument :
 BNA_G
 ClientSampleId :
 C0AN4

Integration Parameters: LSCINT.P

Integrator: RTE
 Smoothing : OFF
 Sampling : 1
 Start Thrs: 0.2
 Stop Thrs : 0

Filtering: 5
 Min Area: 0.1 % of largest Peak
 Max Peaks: 100
 Peak Location: TOP

If leading or trailing edge < 100 prefer < Baseline drop else tangent >
 Peak separation: 5

Method : Z:\HPCHEM1\BNA G\METHODS\SOM02.2-EPA-BG091015.M
 Title : SVOA CALIBRATION

72	24.167	3628	3630	3633	rVB4	3694	2917	0.15%	0.018%
73	24.484	3682	3684	3686	rVB3	3818	2318	0.12%	0.015%
74	24.596	3692	3703	3717	rBV	676609	1850699	93.85%	11.737%
75	24.813	3730	3740	3754	rVB2	458018	1247310	63.25%	7.910%
76	25.119	3790	3792	3793	rBV	3882	2714	0.14%	0.017%
77	25.166	3798	3800	3804	rBV5	3717	5329	0.27%	0.034%
78	25.407	3839	3841	3842	rVB2	5179	2759	0.14%	0.017%
79	25.589	3871	3872	3873	rBV	4415	2305	0.12%	0.015%
80	25.665	3884	3885	3886	rBV	5004	2561	0.13%	0.016%
81	26.652	4051	4053	4056	rBV3	3606	3253	0.16%	0.021%
82	26.805	4077	4079	4080	rBV2	3545	2007	0.10%	0.013%
83	27.269	4154	4158	4165	rVB10	8401	19830	1.01%	0.126%
84	28.157	4307	4309	4314	rBV6	4037	7014	0.36%	0.044%
85	28.803	4417	4419	4420	rBV2	4122	2219	0.11%	0.014%
86	29.091	4466	4468	4470	rBV3	3172	3515	0.18%	0.022%
87	29.191	4482	4485	4487	rBV3	4363	5797	0.29%	0.037%
88	29.696	4569	4571	4573	rBV3	5617	5499	0.28%	0.035%
89	30.718	4743	4745	4746	rVB2	3701	2119	0.11%	0.013%
90	31.370	4854	4856	4857	rBV2	4486	3077	0.16%	0.020%
91	31.435	4865	4867	4868	rBV2	3282	2245	0.11%	0.014%
92	31.523	4880	4882	4884	rBV3	3244	2471	0.13%	0.016%
93	32.046	4969	4971	4972	rBV2	3577	3043	0.15%	0.019%

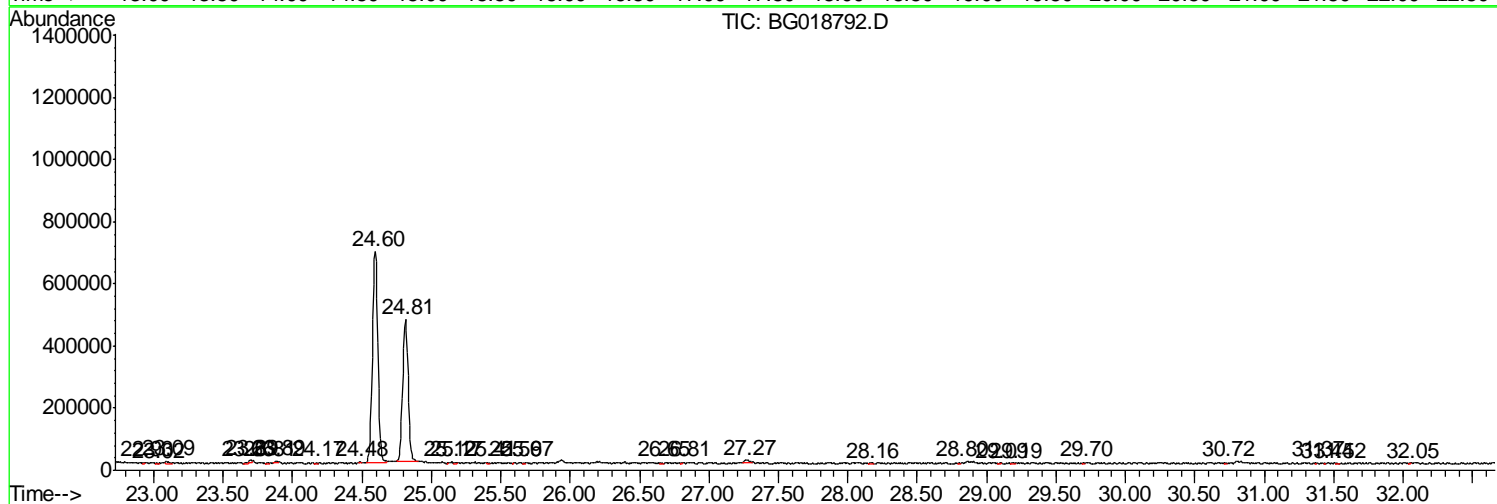
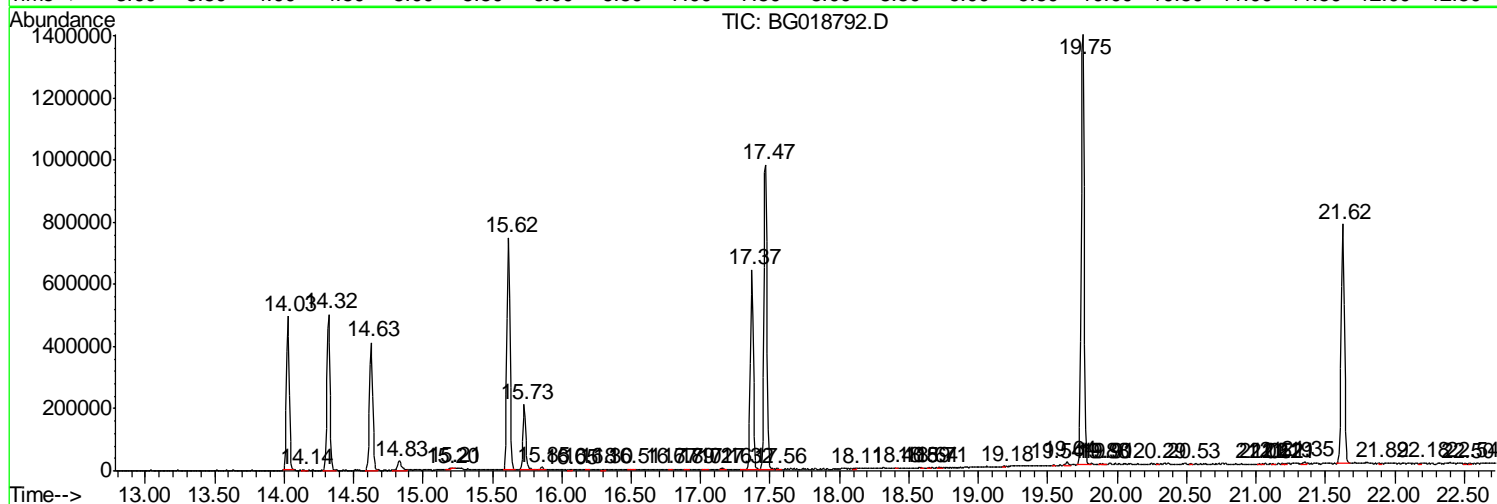
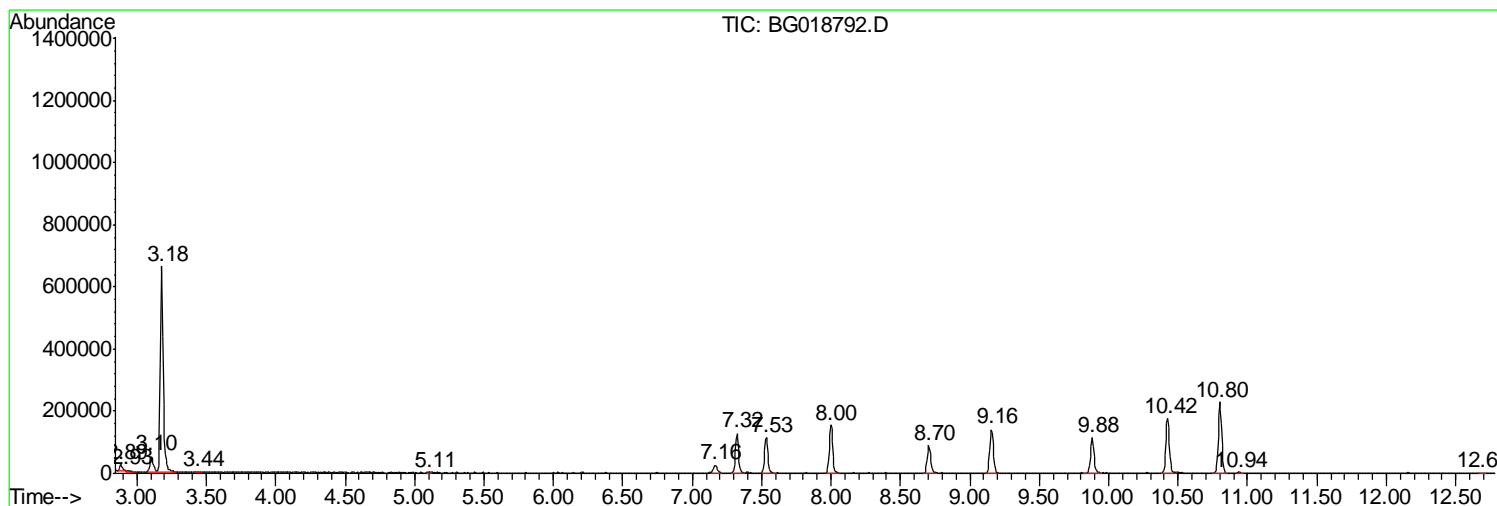
Sum of corrected areas: 15768694

Data Path : Z:\HPCHEM1\BNA G\DATA\BG092115\
 Data File : BG018792.D
 Acq On : 21 Sep 2015 21:11
 Operator : TP
 Sample : G3696-13
 Misc :
 ALS Vial : 17 Sample Multiplier: 1

Instrument :
 BNA_G
 ClientSampleId :
 C0AN4

Quant Method : Z:\HPCHEM1\BNA G\METHODS\SOM02.2-EPA-BG091015.M
 Quant Title : SVOA CALIBRATION

TIC Library : C:\DATABASE\NIST02.L
 TIC Integration Parameters: LSCINT.P



Data Path : Z:\HPCHEM1\BNA G\DATA\BG092115\
 Data File : BG018792.D
 Acq On : 21 Sep 2015 21:11
 Operator : TP
 Sample : G3696-13
 Misc :
 ALS Vial : 17 Sample Multiplier: 1

Instrument :
 BNA_G
 ClientSampled :
 C0AN4

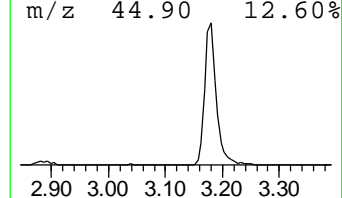
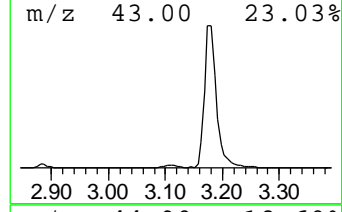
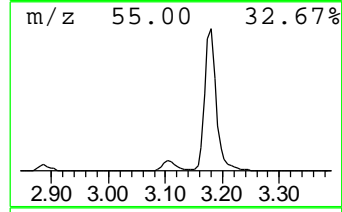
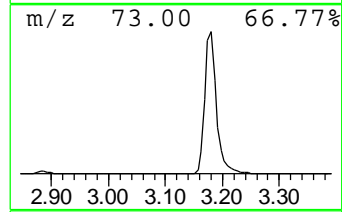
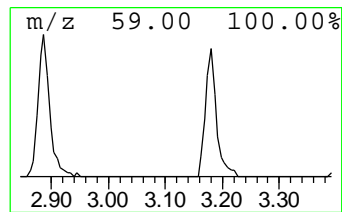
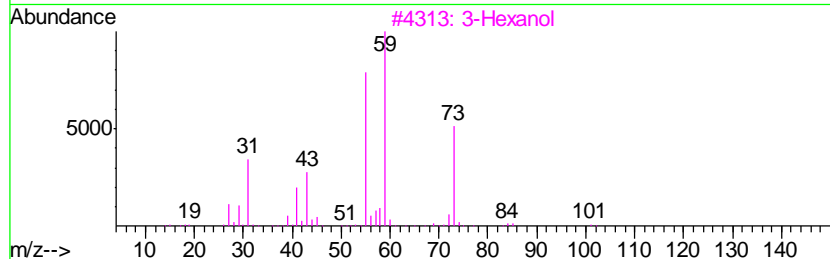
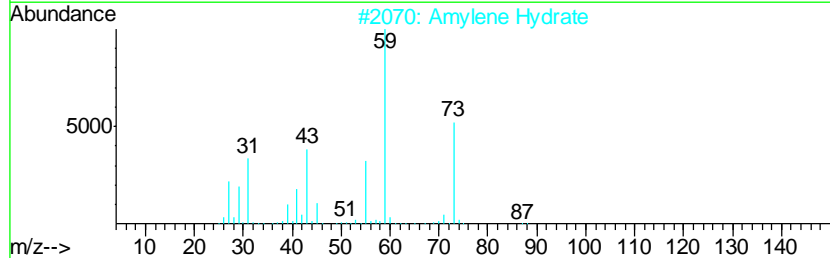
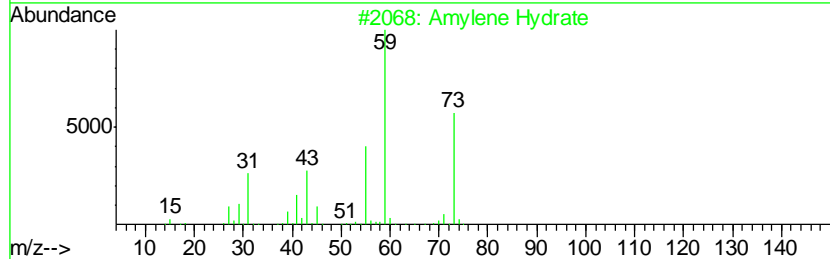
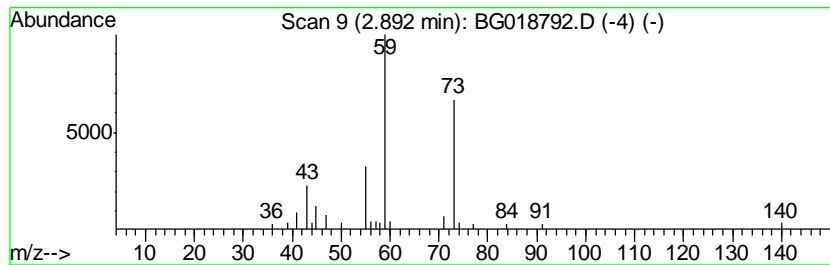
Quant Method : Z:\HPCHEM1\BNA G\METHODS\SOM02.2-EPA-BG091015.M
 Quant Title : SVOA CALIBRATION

TIC Library : C:\DATABASE\NIST02.L
 TIC Integration Parameters: LSCINT.P

 Peak Number 1 Amylene Hydrate Concentration Rank 3

R.T.	EstConc	Area	Relative to ISTD	R.T.
2.89	2.30 ng/ul	29798	1,4-Dichlorobenzene-d4	8.00

Hit#	of	Tentative ID	MW	MolForm	CAS#	Qual
1	5	Amylene Hydrate	88	C5H12O	000075-85-4	83
2		Amylene Hydrate	88	C5H12O	000075-85-4	74
3		3-Hexanol	102	C6H14O	000623-37-0	40
4		Butanamide	87	C4H9NO	000541-35-5	38
5		Butane, 2-methoxy-	88	C5H12O	006795-87-5	9



Data Path : Z:\HPCHEM1\BNA G\DATA\BG092115\
 Data File : BG018792.D
 Acq On : 21 Sep 2015 21:11
 Operator : TP
 Sample : G3696-13
 Misc :
 ALS Vial : 17 Sample Multiplier: 1

Instrument :
 BNA_G
 ClientSampleId :
 C0AN4

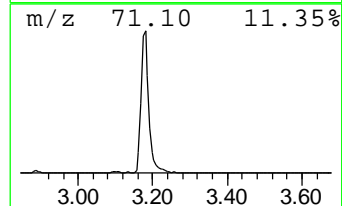
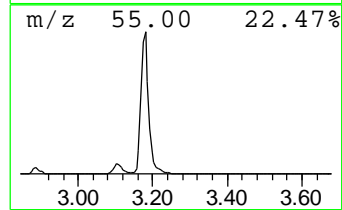
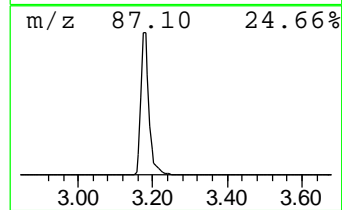
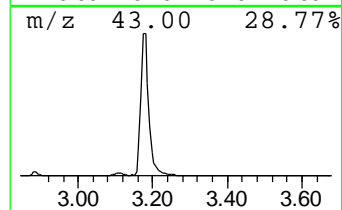
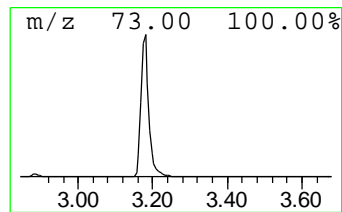
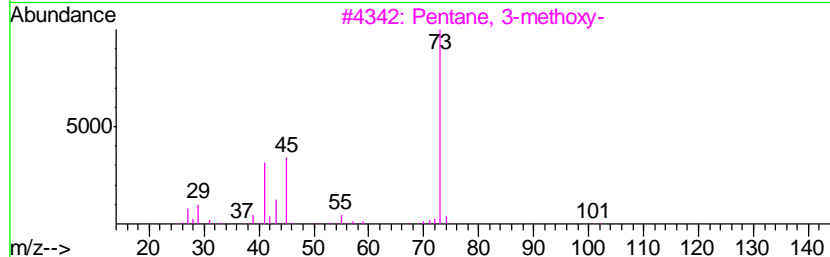
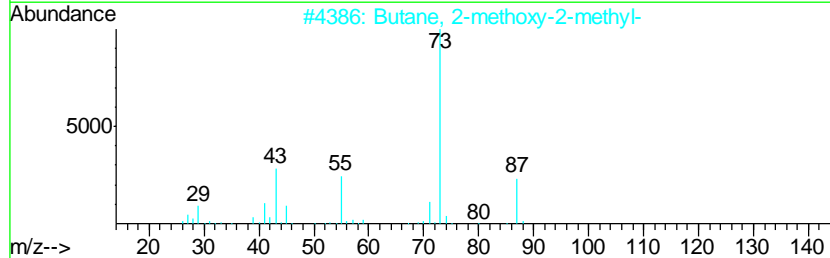
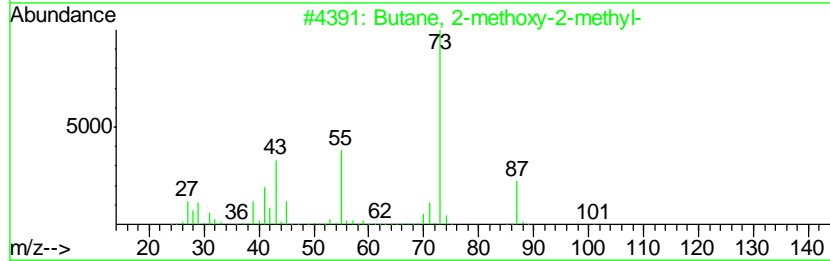
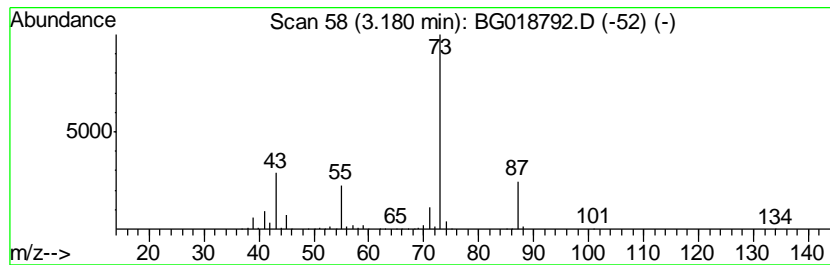
Quant Method : Z:\HPCHEM1\BNA G\METHODS\SOM02.2-EPA-BG091015.M
 Quant Title : SVOA CALIBRATION

TIC Library : C:\DATABASE\NIST02.L
 TIC Integration Parameters: LSCINT.P

 Peak Number 3 Butane, 2-methoxy-2-methyl- Concentration Rank 1

R.T.	EstConc	Area	Relative to ISTD	R.T.
3.18	73.49 ng/ul	953063	1,4-Dichlorobenzene-d4	8.00

Hit#	of	Tentative ID	MW	MolForm	CAS#	Qual
1	5	Butane, 2-methoxy-2-methyl-	102	C6H14O	000994-05-8	83
2		Butane, 2-methoxy-2-methyl-	102	C6H14O	000994-05-8	78
3		Pentane, 3-methoxy-	102	C6H14O	036839-67-5	23
4		Acetamide, N-ethyl-	87	C4H9NO	000625-50-3	9
5		N-Ethylformamide	73	C3H7NO	000627-45-2	9



Data Path : Z:\HPCHEM1\BNA_G\DATA\BG092115\
Data File : BG018792.D
Acq On : 21 Sep 2015 21:11
Operator : TP
Sample : G3696-13
Misc :
ALS Vial : 17 Sample Multiplier: 1

Instrument :
BNA_G
ClientSampleId :
C0AN4

Quant Method : Z:\HPCHEM1\BNA_G\METHODS\SOM02.2-EPA-BG091015.M
Quant Title : SVOA CALIBRATION

TIC Library : C:\DATABASE\NIST02.L
TIC Integration Parameters: LSCINT.P

TIC Top Hit name	RT	EstConc	Units	Response	--Internal Standard--			
					#	RT	Resp	Conc
Amylene Hydrate	2.89	2.3	ng/ul	29798	1	8.00	259359	20.0
Butane, 2-methoxy...	3.18	73.5	ng/ul	953063	1	8.00	259359	20.0