

Data Path : Z:\HPCHEM1\BNA G\DATA\BG092115\
 Data File : BG018815.D
 Acq On : 22 Sep 2015 13:26
 Operator : TP
 Sample : G3763-10
 Misc :
 ALS Vial : 38 Sample Multiplier: 1

Instrument :
 BNA_G
 ClientSampleId :
 SVOC-GPC2-BLANK

Integration Parameters: LSCINT.P

Integrator: RTE
 Smoothing : OFF
 Sampling : 1
 Start Thrs: 0.2
 Stop Thrs : 0

Filtering: 5
 Min Area: 0.1 % of largest Peak
 Max Peaks: 100
 Peak Location: TOP

If leading or trailing edge < 100 prefer < Baseline drop else tangent >
 Peak separation: 5

Method : Z:\HPCHEM1\BNA G\METHODS\SOM02.2-EPA-BG091015.M
 Title : SVOA CALIBRATION

Signal : TIC

peak #	R.T. min	first scan	max scan	last scan	PK TY	peak height	corr. area	corr. % max.	% of total
1	3.108	41	46	50	rBV3	11284	19665	1.98%	0.500%
2	3.179	54	58	65	rVB	22321	34714	3.49%	0.883%
3	4.677	311	313	318	rVB4	1541	2409	0.24%	0.061%
4	4.859	342	344	349	rBV5	1180	1576	0.16%	0.040%
5	4.989	363	366	369	rBV4	1015	1286	0.13%	0.033%
6	5.053	375	377	379	rBV2	1188	1220	0.12%	0.031%
7	5.435	441	442	446	rBV2	1012	1180	0.12%	0.030%
8	6.246	576	580	581	rBV2	1299	1289	0.13%	0.033%
9	6.769	666	669	672	rBV2	1148	1722	0.17%	0.044%
10	6.933	694	697	699	rBV	1180	1511	0.15%	0.038%
11	6.992	705	707	711	rBV3	1319	1320	0.13%	0.034%
12	7.486	789	791	796	rBV2	743	1193	0.12%	0.030%
13	7.691	824	826	830	rVB2	1001	1385	0.14%	0.035%
14	7.903	860	862	865	rVB3	1382	1210	0.12%	0.031%
15	7.997	872	878	887	rBV	135019	231636	23.27%	5.891%
16	8.073	889	891	893	rBV2	1330	1220	0.12%	0.031%
17	8.232	915	918	921	rBV4	1060	1501	0.15%	0.038%
18	8.302	928	930	932	rVB2	1475	1224	0.12%	0.031%
19	9.718	1169	1171	1177	rVB4	918	1237	0.12%	0.031%
20	10.006	1218	1220	1226	rBV3	897	1767	0.18%	0.045%
21	10.282	1263	1267	1269	rVB2	999	1390	0.14%	0.035%
22	10.300	1269	1270	1274	rBV3	1269	1419	0.14%	0.036%
23	10.605	1320	1322	1326	rVB2	1487	1417	0.14%	0.036%
24	10.805	1346	1356	1366	rBV	184816	337243	33.88%	8.577%
25	12.779	1690	1692	1693	rBV	115132	40675	4.09%	1.035%
26	13.302	1776	1781	1783	rBV	761	1230	0.12%	0.031%
27	13.772	1855	1861	1864	rBV3	768	1268	0.13%	0.032%
28	14.237	1937	1940	1943	rBV2	1068	1360	0.14%	0.035%
29	14.407	1967	1969	1974	rVB3	1073	1491	0.15%	0.038%
30	14.477	1974	1981	1983	rBV3	869	1739	0.17%	0.044%
31	14.624	1998	2006	2015	rBV2	317199	516219	51.86%	13.129%
32	15.611	2172	2174	2179	rBV3	1334	1411	0.14%	0.036%
33	15.752	2194	2198	2202	rBV2	1154	2164	0.22%	0.055%
34	15.846	2211	2214	2215	rBV	1278	1312	0.13%	0.033%

Data Path : Z:\HPCHEM1\BNA G\DATA\BG092115\
 Data File : BG018815.D
 Acq On : 22 Sep 2015 13:26
 Operator : TP
 Sample : G3763-10
 Misc :
 ALS Vial : 38 Sample Multiplier: 1

Instrument :
 BNA_G
 ClientSampleId :
 SVOC-GPC2-BLANK

Integration Parameters: LSCINT.P

Integrator: RTE
 Smoothing : OFF
 Sampling : 1
 Start Thrs: 0.2
 Stop Thrs : 0

Filtering: 5
 Min Area: 0.1 % of largest Peak
 Max Peaks: 100
 Peak Location: TOP

If leading or trailing edge < 100 prefer < Baseline drop else tangent >
 Peak separation: 5

Method : Z:\HPCHEM1\BNA G\METHODS\SOM02.2-EPA-BG091015.M
 Title : SVOA CALIBRATION

35	15.888	2218	2221	2225	rVB2	1351	1603	0.16%	0.041%
36	17.151	2433	2436	2441	rBV4	1937	2277	0.23%	0.058%
37	17.368	2466	2473	2483	rBV	478111	718560	72.18%	18.276%
38	17.668	2521	2524	2527	rBV3	1249	1948	0.20%	0.050%
39	18.179	2607	2611	2612	rBV	1613	1257	0.13%	0.032%
40	18.637	2685	2689	2690	rBV2	1195	1213	0.12%	0.031%
41	18.884	2729	2731	2733	rVB2	1290	1190	0.12%	0.030%
42	18.908	2733	2735	2737	rVB	2266	1364	0.14%	0.035%
43	19.002	2749	2751	2754	rVB	1081	1230	0.12%	0.031%
44	19.331	2806	2807	2813	rBV3	1602	1921	0.19%	0.049%
45	19.389	2813	2817	2820	rBV4	1052	1664	0.17%	0.042%
46	19.454	2826	2828	2829	rBV2	1423	1226	0.12%	0.031%
47	20.047	2927	2929	2931	rBV3	1660	1182	0.12%	0.030%
48	20.194	2950	2954	2955	rBV3	1617	1552	0.16%	0.039%
49	20.218	2956	2958	2959	rBV	1706	1327	0.13%	0.034%
50	20.312	2972	2974	2976	rBV3	1924	1696	0.17%	0.043%
51	20.541	3011	3013	3015	rBV3	1839	1760	0.18%	0.045%
52	20.641	3029	3030	3032	rBV2	2700	2003	0.20%	0.051%
53	20.676	3035	3036	3037	rBV	2154	1179	0.12%	0.030%
54	20.835	3061	3063	3064	rBV	3002	1497	0.15%	0.038%
55	21.264	3135	3136	3138	rVB2	4029	1928	0.19%	0.049%
56	21.622	3190	3197	3205	rBV	610241	995497	100.00%	25.319%
57	24.812	3730	3740	3757	rVB2	331549	959236	96.36%	24.397%
58	29.084	4465	4467	4469	rBV2	3874	3452	0.35%	0.088%
59	31.657	4904	4905	4908	rBV3	4053	3409	0.34%	0.087%

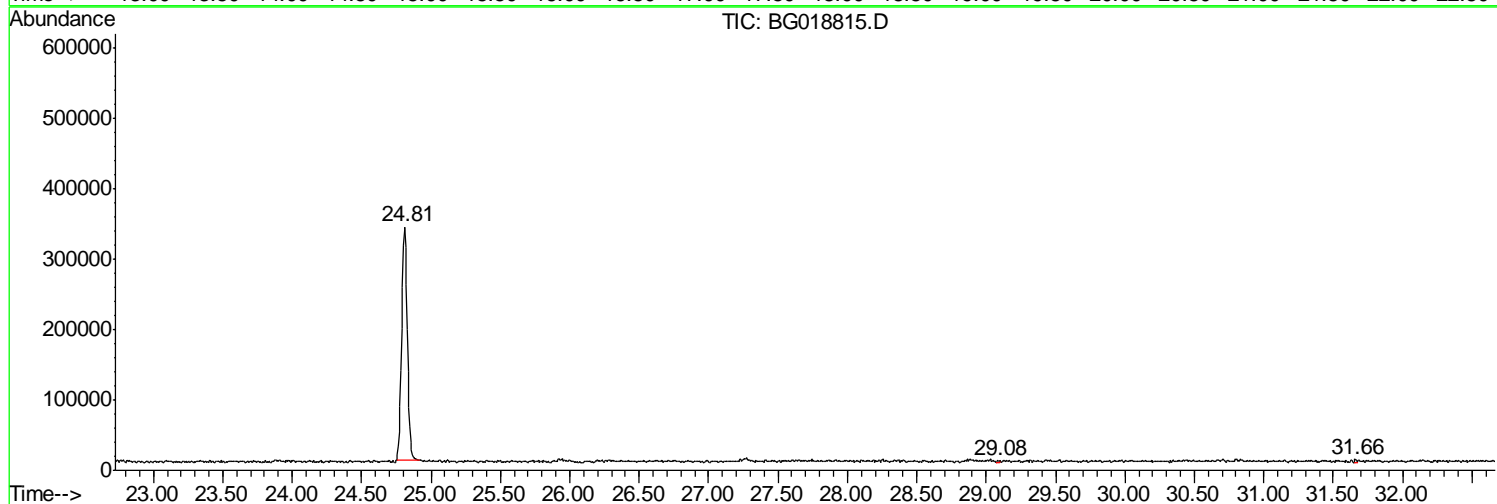
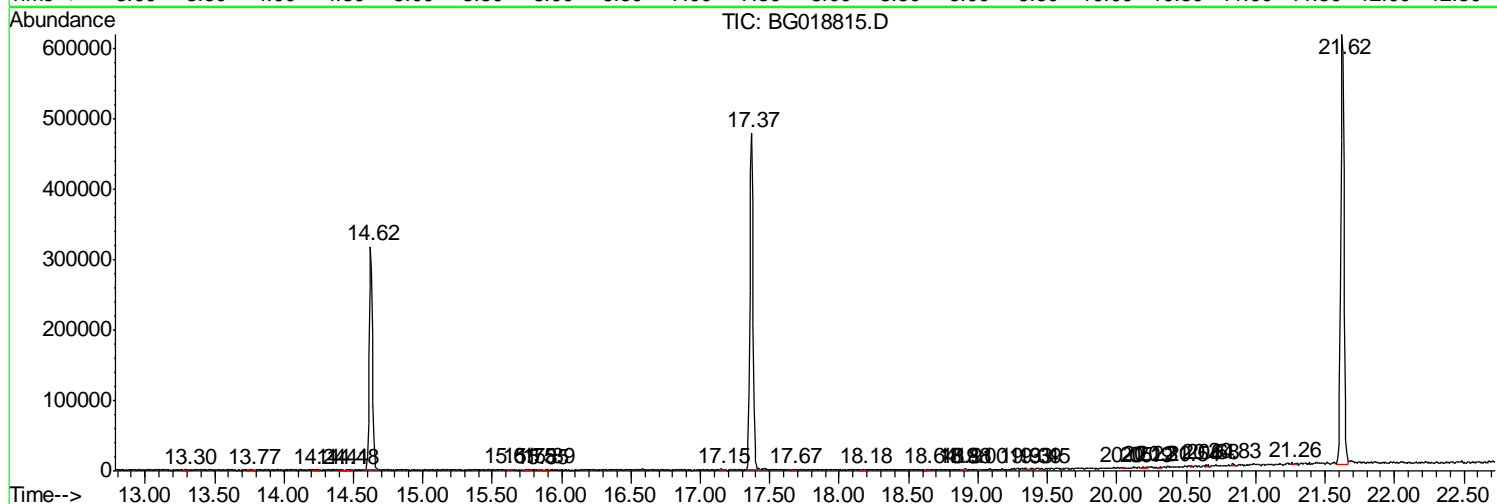
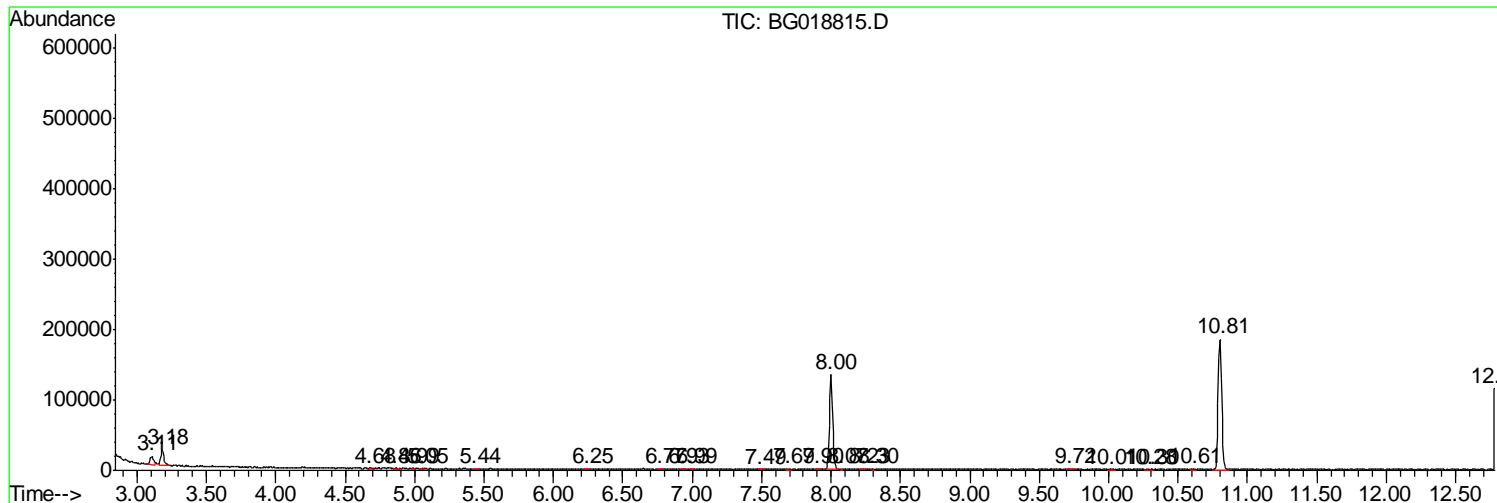
Sum of corrected areas: 3931774

Data Path : Z:\HPCHEM1\BNA G\DATA\BG092115\
 Data File : BG018815.D
 Acq On : 22 Sep 2015 13:26
 Operator : TP
 Sample : G3763-10
 Misc :
 ALS Vial : 38 Sample Multiplier: 1

Instrument :
 BNA_G
 ClientSampleId :
 SVOC-GPC2-BLANK

Quant Method : Z:\HPCHEM1\BNA G\METHODS\SOM02.2-EPA-BG091015.M
 Quant Title : SVOA CALIBRATION

TIC Library : C:\DATABASE\NIST02.L
 TIC Integration Parameters: LSCINT.P



Data Path : Z:\HPCHEM1\BNA G\DATA\BG092115\
 Data File : BG018815.D
 Acq On : 22 Sep 2015 13:26
 Operator : TP
 Sample : G3763-10
 Misc :
 ALS Vial : 38 Sample Multiplier: 1

Instrument :
 BNA_G
 ClientSampleId :
 SVOC-GPC2-BLANK

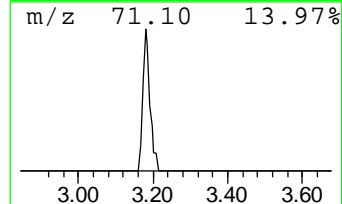
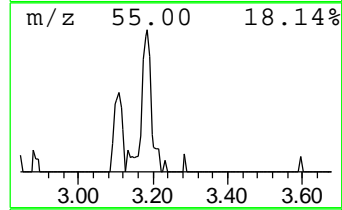
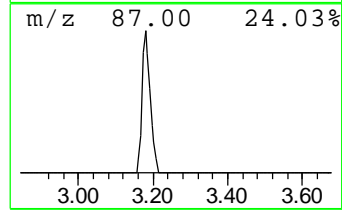
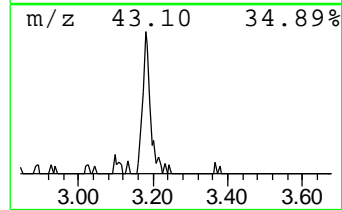
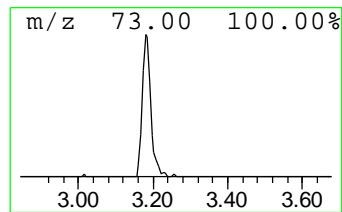
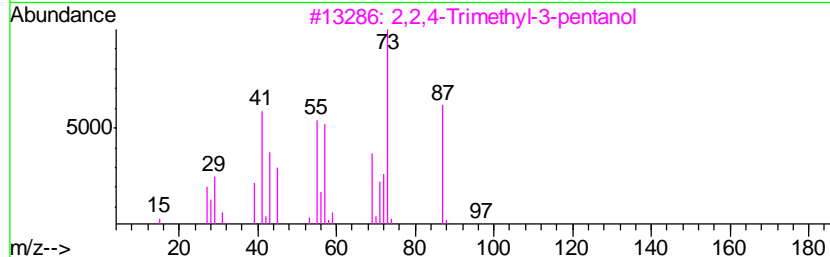
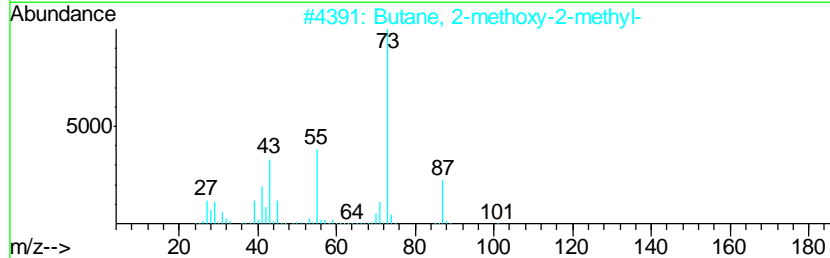
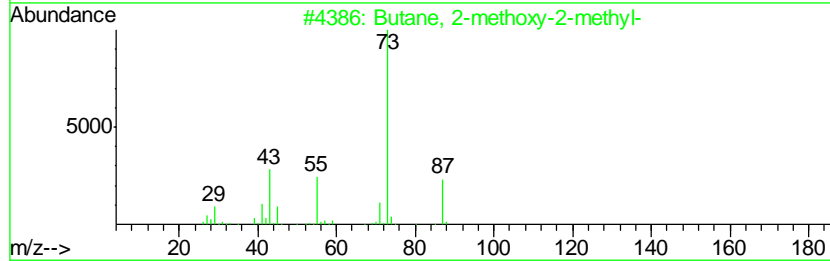
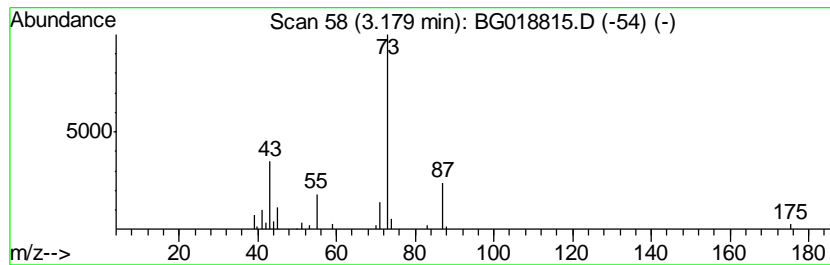
Quant Method : Z:\HPCHEM1\BNA G\METHODS\SOM02.2-EPA-BG091015.M
 Quant Title : SVOA CALIBRATION

TIC Library : C:\DATABASE\NIST02.L
 TIC Integration Parameters: LSCINT.P

 Peak Number 1 Butane, 2-methoxy-2-methyl- Concentration Rank 1

R.T.	EstConc	Area	Relative to ISTD	R.T.
3.18	3.00 ng/ul	34714	1,4-Dichlorobenzene-d4	8.00

Hit#	of	Tentative ID	MW	MolForm	CAS#	Qual
1	5	Butane, 2-methoxy-2-methyl-	102	C6H14O	000994-05-8	72
2		Butane, 2-methoxy-2-methyl-	102	C6H14O	000994-05-8	56
3		2,2,4-Trimethyl-3-pentanol	130	C8H18O	005162-48-1	50
4		1,3-Dioxolane, 2-methyl-	88	C4H8O2	000497-26-7	25
5		2-Hydroxy-2-methylbutyric acid	118	C5H10O3	003739-30-8	17



Data Path : Z:\HPCHEM1\BNA_G\DATA\BG092115\
Data File : BG018815.D
Acq On : 22 Sep 2015 13:26
Operator : TP
Sample : G3763-10
Misc :
ALS Vial : 38 Sample Multiplier: 1

Instrument :
BNA_G
ClientSampleId :
SVOC-GPC2-BLANK

Quant Method : Z:\HPCHEM1\BNA_G\METHODS\SOM02.2-EPA-BG091015.M
Quant Title : SVOA CALIBRATION

TIC Library : C:\DATABASE\NIST02.L
TIC Integration Parameters: LSCINT.P

TIC Top Hit name	RT	EstConc	Units	Response	--Internal Standard--			
					#	RT	Resp	Conc
Butane, 2-methoxy...	3.18	3.0	ng/ul	34714	1	8.00	231636	20.0