

Data Path : Z:\HPCHEM1\BNA G\Data\BG092315\  
 Data File : BG018866.D  
 Acq On : 24 Sep 2015 00:41  
 Operator : UM/NP  
 Sample : G3759-04  
 Misc :  
 ALS Vial : 22 Sample Multiplier: 1

Instrument :  
 BNA\_G  
 ClientSampleId :  
 JHAC2

Integration Parameters: LSCINT.P

Integrator: RTE  
 Smoothing : OFF  
 Sampling : 1  
 Start Thrs: 0.2  
 Stop Thrs : 0

Filtering: 5  
 Min Area: 0.1 % of largest Peak  
 Max Peaks: 100  
 Peak Location: TOP

If leading or trailing edge < 100 prefer < Baseline drop else tangent >  
 Peak separation: 5

Method : Z:\HPCHEM1\BNA G\METHODS\SOM02.2-EPA-BG091015.M  
 Title : SVOA CALIBRATION

Signal : TIC

peak #	R.T. min	first scan	max scan	last scan	PK TY	peak height	corr. area	corr. % max.	% of total
1	2.885	5	8	19	rVB	21813	36238	2.18%	0.175%
2	3.103	39	45	53	rBV2	40944	81816	4.93%	0.395%
3	3.179	53	58	70	rVB	516958	752322	45.30%	3.633%
4	3.438	97	102	110	rVB2	10671	16944	1.02%	0.082%
5	3.714	145	149	154	rVV	4989	6811	0.41%	0.033%
6	4.002	195	198	203	rBV3	4131	5900	0.36%	0.028%
7	4.190	226	230	237	rBV3	3607	5297	0.32%	0.026%
8	5.100	379	385	388	rBV3	3788	6334	0.38%	0.031%
9	6.076	549	551	556	rVB3	1972	2437	0.15%	0.012%
10	6.634	645	646	652	rVB2	2112	2847	0.17%	0.014%
11	7.022	710	712	720	rVB4	1676	2472	0.15%	0.012%
12	7.168	725	737	750	rBV	213296	386212	23.25%	1.865%
13	7.321	756	763	773	rBV	176808	294032	17.70%	1.420%
14	7.533	792	799	807	rBV	218782	373035	22.46%	1.801%
15	8.003	870	879	885	rBV	232432	394911	23.78%	1.907%
16	8.056	885	888	896	rVB5	3970	7410	0.45%	0.036%
17	8.708	992	999	1006	rBV2	280597	483452	29.11%	2.334%
18	9.154	1067	1075	1084	rBV	196412	355685	21.42%	1.718%
19	9.260	1089	1093	1095	rBV3	1649	2594	0.16%	0.013%
20	9.313	1100	1102	1107	rVB4	2593	3446	0.21%	0.017%
21	9.577	1143	1147	1151	rVB2	4398	5460	0.33%	0.026%
22	9.883	1192	1199	1206	rBV	170217	304504	18.33%	1.470%
23	10.423	1284	1291	1300	rBV	300763	537455	32.36%	2.595%
24	10.570	1310	1316	1321	rBV4	4315	6599	0.40%	0.032%
25	10.805	1347	1356	1363	rBV	352353	620046	37.33%	2.994%
26	10.935	1371	1378	1388	rBV	268728	491859	29.61%	2.375%
27	12.456	1634	1637	1642	rVV5	1600	2994	0.18%	0.014%
28	12.592	1655	1660	1663	rVB4	1404	2438	0.15%	0.012%
29	12.780	1688	1692	1698	rVV3	1573	2638	0.16%	0.013%
30	12.985	1721	1727	1732	rBV4	8485	12091	0.73%	0.058%
31	13.232	1763	1769	1776	rVB4	9330	15875	0.96%	0.077%
32	13.831	1865	1871	1873	rBV4	2510	4553	0.27%	0.022%
33	13.925	1883	1887	1890	rBV	1259	2578	0.16%	0.012%
34	14.031	1894	1905	1909	rBV	538092	812664	48.93%	3.924%

Data Path : Z:\HPCHEM1\BNA G\Data\BG092315\  
 Data File : BG018866.D  
 Acq On : 24 Sep 2015 00:41  
 Operator : UM/NP  
 Sample : G3759-04  
 Misc :  
 ALS Vial : 22 Sample Multiplier: 1

Instrument :  
 BNA\_G  
 ClientSampleId :  
 JHAC2

## Integration Parameters: LSCINT.P

Integrator: RTE  
 Smoothing : OFF  
 Sampling : 1  
 Start Thrs: 0.2  
 Stop Thrs : 0

Filtering: 5  
 Min Area: 0.1 % of largest Peak  
 Max Peaks: 100  
 Peak Location: TOP

If leading or trailing edge < 100 prefer < Baseline drop else tangent >  
 Peak separation: 5

Method : Z:\HPCHEM1\BNA G\METHODS\SOM02.2-EPA-BG091015.M  
 Title : SVOA CALIBRATION

35	14.072	1909	1912	1920	rVB	296509	416615	25.08%	2.012%
36	14.154	1920	1926	1931	rVB6	5189	8682	0.52%	0.042%
37	14.260	1941	1944	1948	rBV4	3334	6488	0.39%	0.031%
38	14.319	1948	1954	1961	rVV	667679	1039765	62.60%	5.021%
39	14.513	1983	1987	1992	rVB2	9697	11893	0.72%	0.057%
40	14.572	1992	1997	2000	rBV5	1773	3661	0.22%	0.018%
41	14.630	2000	2007	2015	rVV2	596039	964209	58.05%	4.656%
42	14.830	2034	2041	2056	rBV	215215	391161	23.55%	1.889%
43	14.924	2056	2057	2059	rVV2	3746	3351	0.20%	0.016%
44	14.965	2059	2064	2065	rVV4	4954	8565	0.52%	0.041%
45	14.977	2065	2066	2069	rVV3	5838	5260	0.32%	0.025%
46	15.006	2069	2071	2073	rVV3	4267	4762	0.29%	0.023%
47	15.036	2073	2076	2081	rVV6	6014	10826	0.65%	0.052%
48	15.106	2087	2088	2091	rVV3	2337	2872	0.17%	0.014%
49	15.130	2091	2092	2096	rVV3	4373	5139	0.31%	0.025%
50	15.183	2098	2101	2102	rVV3	3159	2624	0.16%	0.013%
51	15.194	2102	2103	2105	rVV2	3777	3303	0.20%	0.016%
52	15.359	2127	2131	2136	rBV5	5160	8413	0.51%	0.041%
53	15.418	2136	2141	2145	rBV4	8063	12743	0.77%	0.062%
54	15.465	2145	2149	2154	rVB2	21390	26560	1.60%	0.128%
55	15.512	2155	2157	2163	rBV4	1868	3710	0.22%	0.018%
56	15.617	2168	2175	2181	rBV	927536	1354579	81.56%	6.541%
57	15.664	2181	2183	2187	rVB3	4282	5266	0.32%	0.025%
58	15.735	2189	2195	2201	rBV	126724	195600	11.78%	0.945%
59	15.858	2208	2216	2222	rBV4	15708	32290	1.94%	0.156%
60	15.970	2234	2235	2238	rVV3	4754	3110	0.19%	0.015%
61	16.023	2240	2244	2246	rBV5	5115	5503	0.33%	0.027%
62	16.082	2252	2254	2257	rVB3	4116	3133	0.19%	0.015%
63	16.158	2264	2267	2268	rBV3	2776	3225	0.19%	0.016%
64	16.187	2270	2272	2276	rVV4	4188	5266	0.32%	0.025%
65	16.252	2280	2283	2286	rBV5	4319	4959	0.30%	0.024%
66	16.322	2291	2295	2298	rBV2	26453	34125	2.05%	0.165%
67	16.393	2304	2307	2312	rBV6	4102	8013	0.48%	0.039%
68	16.434	2312	2314	2315	rVV	3065	2700	0.16%	0.013%
69	16.493	2322	2324	2330	rVB6	5848	9450	0.57%	0.046%
70	16.575	2334	2338	2339	rBV4	6724	7978	0.48%	0.039%
71	16.604	2342	2343	2347	rBV4	2782	3205	0.19%	0.015%

Data Path : Z:\HPCHEM1\BNA G\Data\BG092315\  
 Data File : BG018866.D  
 Acq On : 24 Sep 2015 00:41  
 Operator : UM/NP  
 Sample : G3759-04  
 Misc :  
 ALS Vial : 22 Sample Multiplier: 1

Instrument :  
 BNA\_G  
 ClientSampleId :  
 JHAC2

## Integration Parameters: LSCINT.P

Integrator: RTE  
 Smoothing : OFF Filtering: 5  
 Sampling : 1 Min Area: 0.1 % of largest Peak  
 Start Thrs: 0.2 Max Peaks: 100  
 Stop Thrs : 0 Peak Location: TOP

If leading or trailing edge < 100 prefer < Baseline drop else tangent >  
 Peak separation: 5

Method : Z:\HPCHEM1\BNA G\METHODS\SOM02.2-EPA-BG091015.M  
 Title : SVOA CALIBRATION

72	16.663	2351	2353	2356	rVB3	4354	3141	0.19%	0.015%
73	16.734	2362	2365	2366	rBV3	3677	3766	0.23%	0.018%
74	16.751	2366	2368	2369	rBV2	3900	3581	0.22%	0.017%
75	16.887	2389	2391	2394	rVB4	3459	2987	0.18%	0.014%
76	16.933	2396	2399	2401	rBV4	4674	5812	0.35%	0.028%
77	17.116	2426	2430	2434	rBV2	24655	28925	1.74%	0.140%
78	17.257	2452	2454	2458	rVB4	3628	3961	0.24%	0.019%
79	17.292	2458	2460	2462	rVB3	3678	2920	0.18%	0.014%
80	17.368	2466	2473	2479	rBV2	789569	1212967	73.03%	5.857%
81	17.468	2484	2490	2499	rVB2	968154	1456263	87.68%	7.032%
82	17.621	2513	2516	2517	rBV3	7030	8239	0.50%	0.040%
83	17.738	2534	2536	2538	rVV3	5548	5425	0.33%	0.026%
84	17.774	2540	2542	2545	rVB4	3912	3710	0.22%	0.018%
85	17.856	2552	2556	2559	rBV3	14324	17538	1.06%	0.085%
86	18.197	2612	2614	2616	rBV3	3521	2838	0.17%	0.014%
87	18.255	2619	2624	2633	rBV	133842	219139	13.19%	1.058%
88	18.561	2672	2676	2678	rBV5	7058	8495	0.51%	0.041%
89	18.743	2703	2707	2709	rBV5	8934	10231	0.62%	0.049%
90	19.078	2762	2764	2765	rBV2	4752	2769	0.17%	0.013%
91	19.295	2799	2801	2803	rBV3	5908	4084	0.25%	0.020%
92	19.419	2818	2822	2827	rVB	28701	37610	2.26%	0.182%
93	19.519	2837	2839	2845	rBV7	18779	31602	1.90%	0.153%
94	19.642	2857	2860	2864	rBV2	13241	18459	1.11%	0.089%
95	19.754	2873	2879	2887	rBV	1120677	1660894	100.00%	8.020%
96	21.264	3132	3136	3142	rBV2	98426	158108	9.52%	0.763%
97	21.628	3191	3198	3205	rBV	884466	1423807	85.73%	6.875%
98	21.986	3247	3259	3264	rBV8	213671	869948	52.38%	4.201%
99	24.595	3695	3703	3715	rVB2	519251	1380458	83.12%	6.666%
100	24.818	3732	3741	3755	rVB2	542924	1460640	87.94%	7.053%

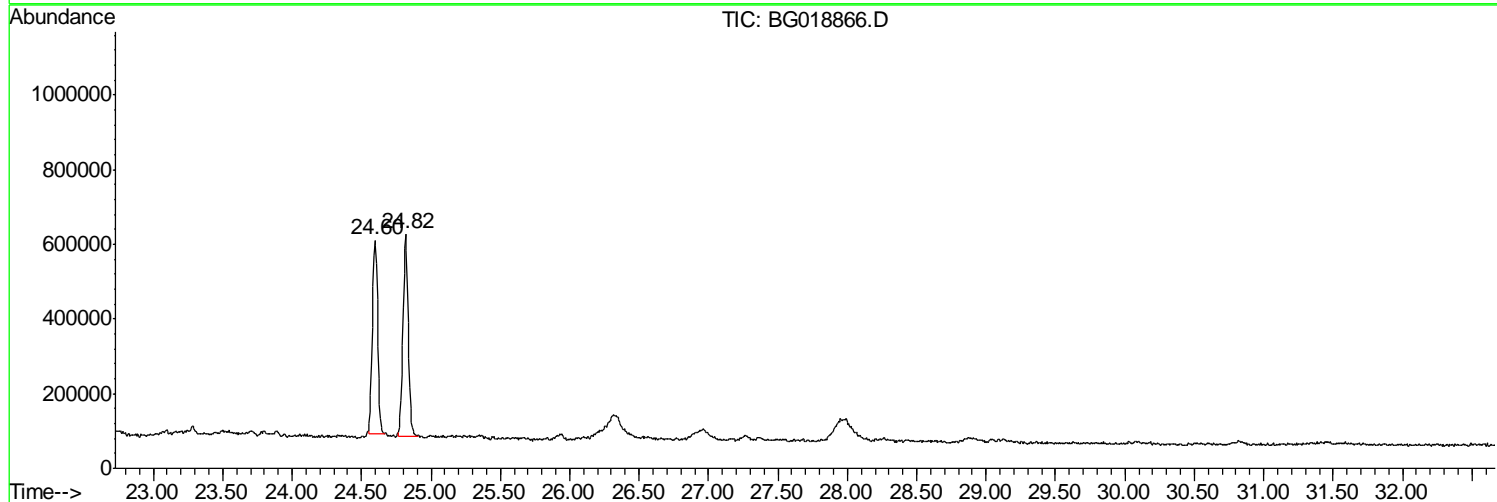
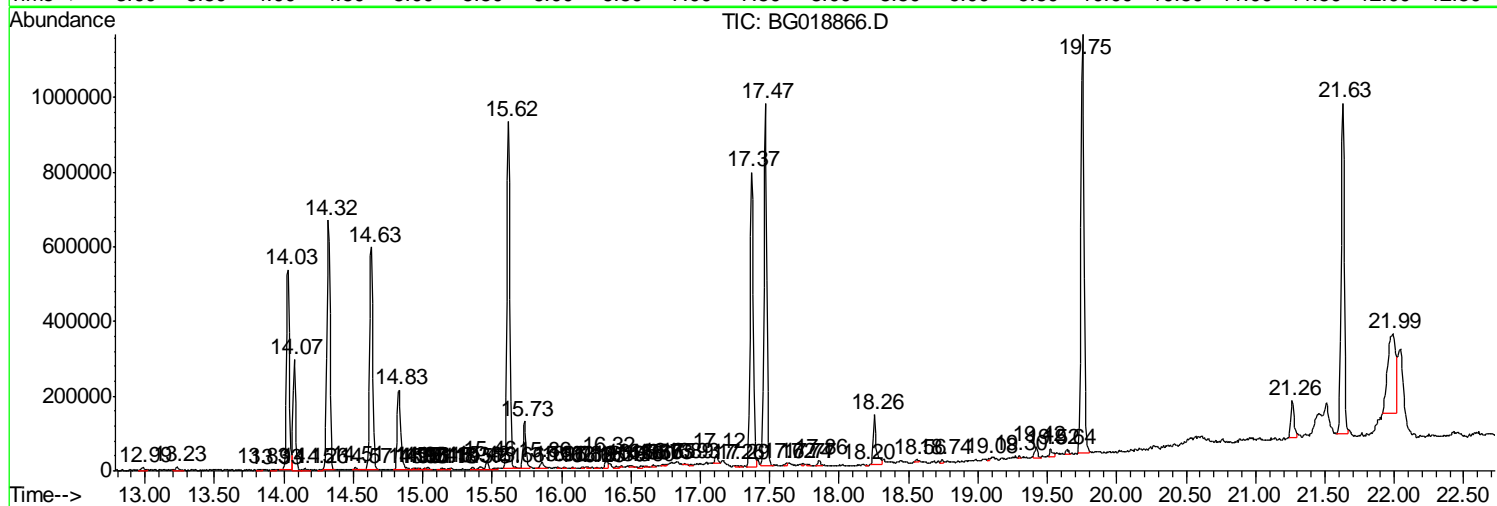
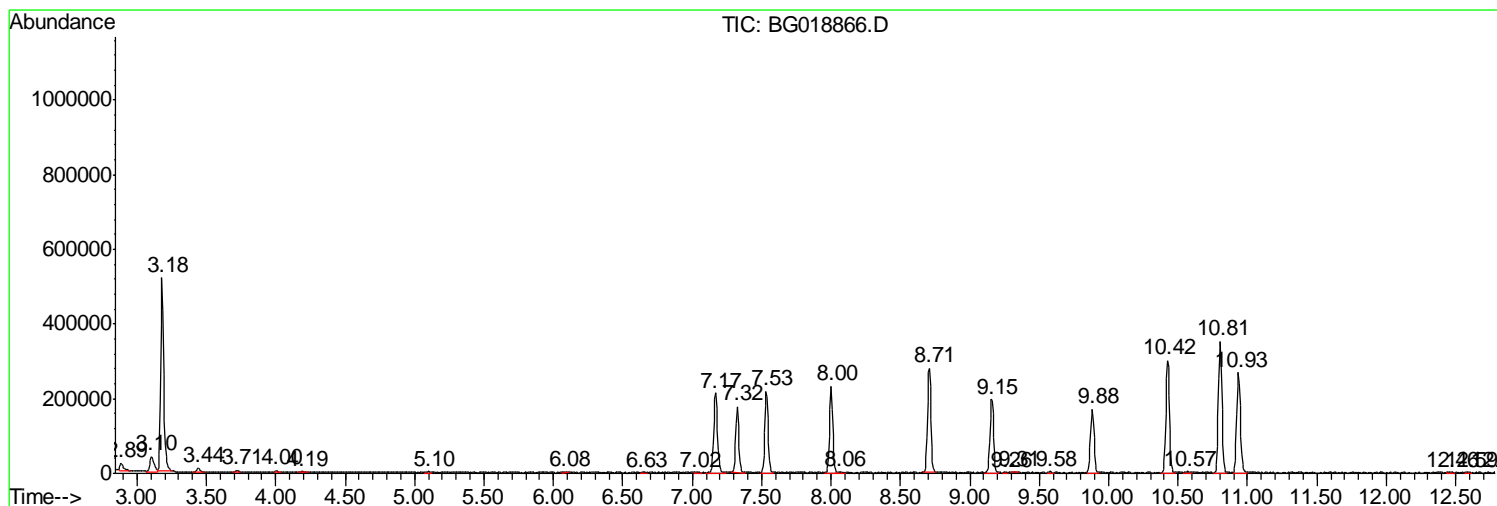
Sum of corrected areas: 20709270

Data Path : Z:\HPCHEM1\BNA G\Data\BG092315\  
 Data File : BG018866.D  
 Acq On : 24 Sep 2015 00:41  
 Operator : UM/NP  
 Sample : G3759-04  
 Misc :  
 ALS Vial : 22 Sample Multiplier: 1

Instrument :  
 BNA\_G  
 ClientSampleId :  
 JHAC2

Quant Method : Z:\HPCHEM1\BNA G\METHODS\SOM02.2-EPA-BG091015.M  
 Quant Title : SVOA CALIBRATION

TIC Library : C:\DATABASE\NIST02.L  
 TIC Integration Parameters: LSCINT.P



Data Path : Z:\HPCHEM1\BNA G\Data\BG092315\  
 Data File : BG018866.D  
 Acq On : 24 Sep 2015 00:41  
 Operator : UM/NP  
 Sample : G3759-04  
 Misc :  
 ALS Vial : 22 Sample Multiplier: 1

Instrument :  
 BNA\_G  
 ClientSampled :  
 JHAC2

Quant Method : Z:\HPCHEM1\BNA G\METHODS\SOM02.2-EPA-BG091015.M  
 Quant Title : SVOA CALIBRATION

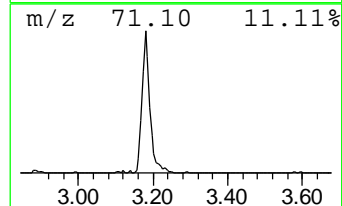
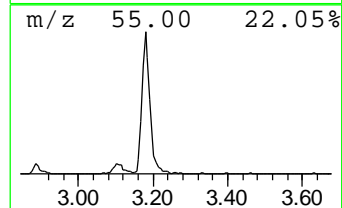
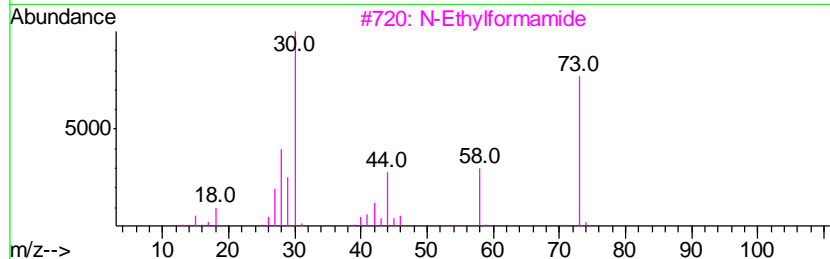
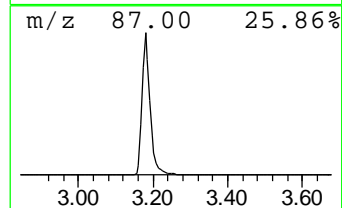
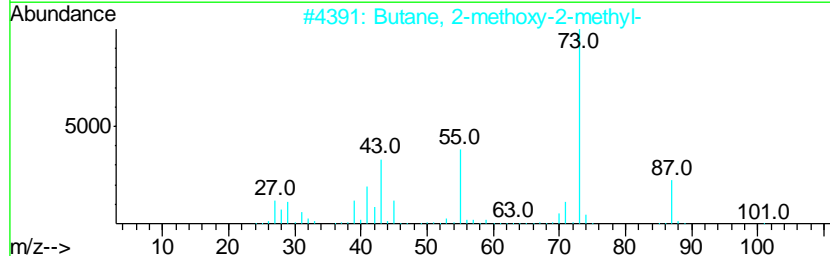
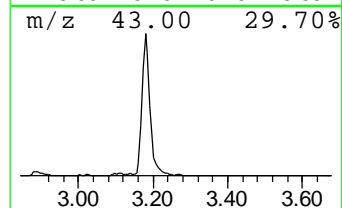
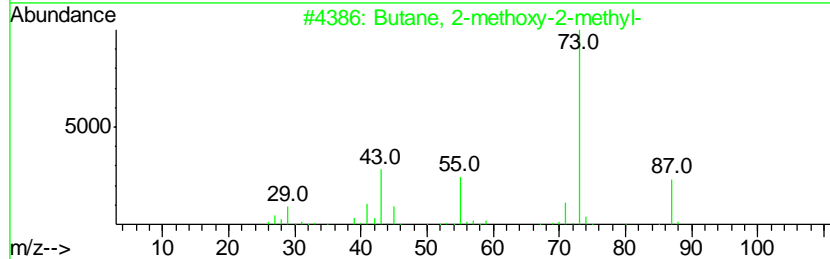
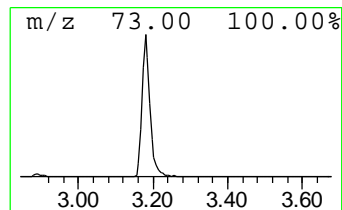
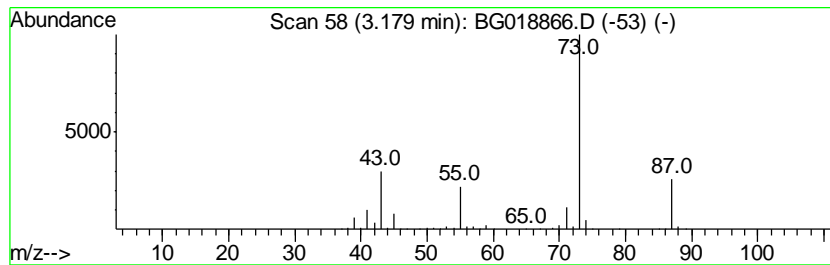
TIC Library : C:\DATABASE\NIST02.L  
 TIC Integration Parameters: LSCINT.P

\*\*\*\*\*  
 Peak Number 2 Butane, 2-methoxy-2-methyl- Concentration Rank 1

R.T.	EstConc	Area	Relative to ISTD	R.T.
3.18	38.10 ng/ul	752322	1,4-Dichlorobenzene-d4	8.00

Hit#	of	Tentative ID	MW	MolForm	CAS#	Qual
1	5	Butane, 2-methoxy-2-methyl-	102	C6H14O	000994-05-8	90
2		Butane, 2-methoxy-2-methyl-	102	C6H14O	000994-05-8	78
3		N-Ethylformamide	73	C3H7NO	000627-45-2	9
4		1,3-Dioxolane, 2-methyl-	88	C4H8O2	000497-26-7	9
5		Silane, tetramethyl-	88	C4H12Si	000075-76-3	9



Data Path : Z:\HPCHEM1\BNA G\Data\BG092315\  
 Data File : BG018866.D  
 Acq On : 24 Sep 2015 00:41  
 Operator : UM/NP  
 Sample : G3759-04  
 Misc :  
 ALS Vial : 22 Sample Multiplier: 1

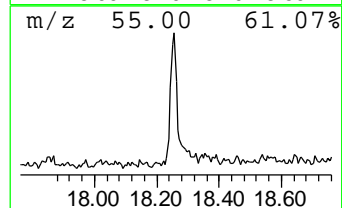
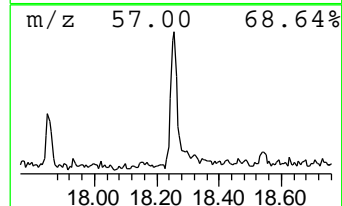
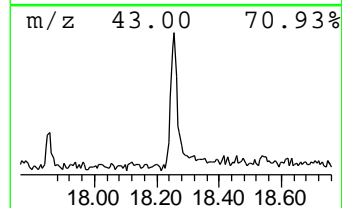
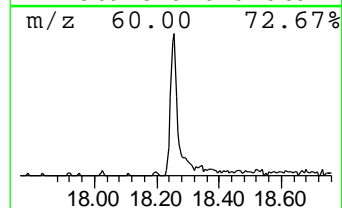
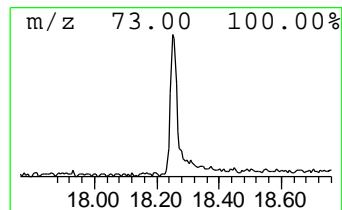
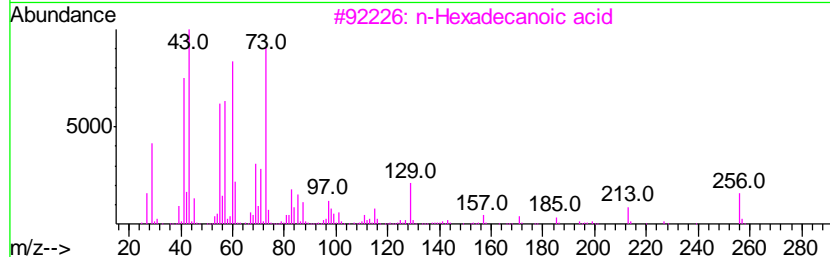
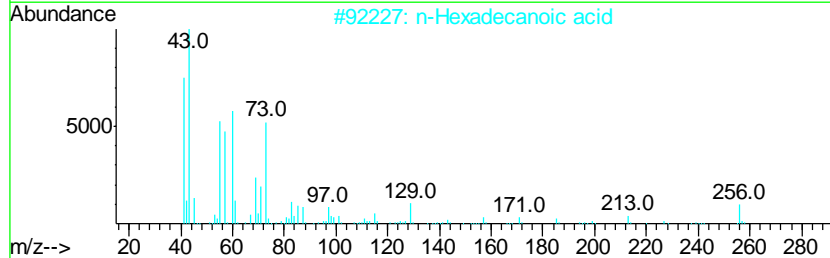
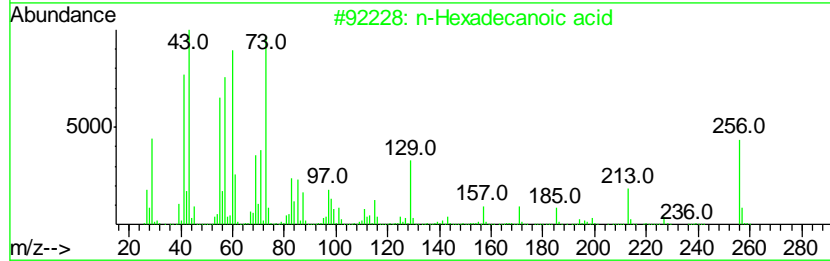
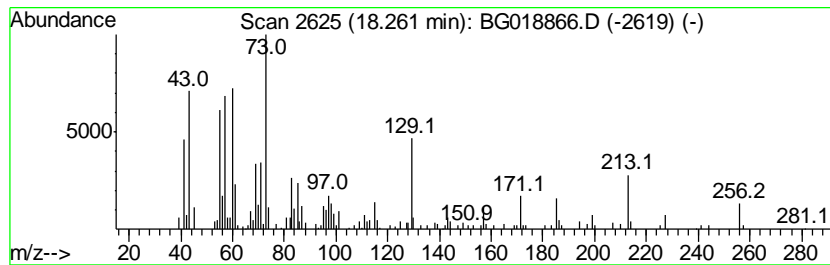
Instrument :  
 BNA\_G  
 ClientSampled :  
 JHAC2

Quant Method : Z:\HPCHEM1\BNA G\METHODS\SOM02.2-EPA-BG091015.M  
 Quant Title : SVOA CALIBRATION

TIC Library : C:\DATABASE\NIST02.L  
 TIC Integration Parameters: LSCINT.P

\*\*\*\*\*  
 Peak Number 3 n-Hexadecanoic acid Concentration Rank 4

R.T.	EstConc	Area	Relative to ISTD	R.T.		
18.26	3.61 ng/ul	219139	Phenanthrene-d10	17.37		
Hit# of	5	Tentative ID	MW	MolForm	CAS#	Qual
1		n-Hexadecanoic acid	256	C16H32O2	000057-10-3	96
2		n-Hexadecanoic acid	256	C16H32O2	000057-10-3	95
3		n-Hexadecanoic acid	256	C16H32O2	000057-10-3	91
4		Tridecanoic acid	214	C13H26O2	000638-53-9	90
5		Pentadecanoic acid	242	C15H30O2	001002-84-2	83



Data Path : Z:\HPCHEM1\BNA G\Data\BG092315\  
 Data File : BG018866.D  
 Acq On : 24 Sep 2015 00:41  
 Operator : UM/NP  
 Sample : G3759-04  
 Misc :  
 ALS Vial : 22 Sample Multiplier: 1

Instrument :  
 BNA\_G  
 ClientSampled :  
 JHAC2

Quant Method : Z:\HPCHEM1\BNA G\METHODS\SOM02.2-EPA-BG091015.M  
 Quant Title : SVOA CALIBRATION

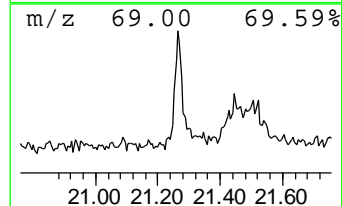
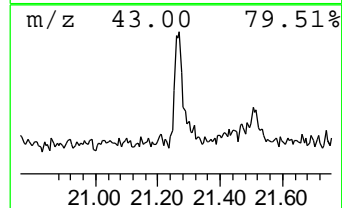
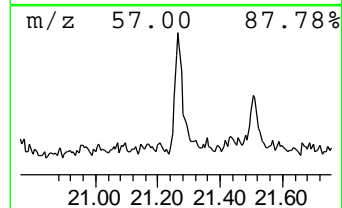
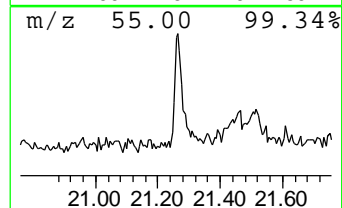
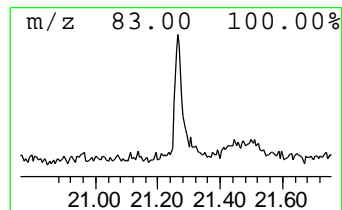
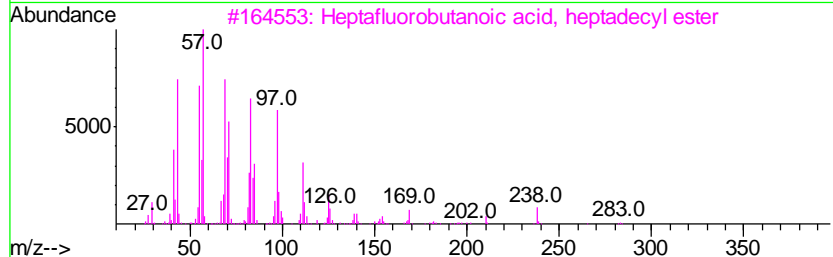
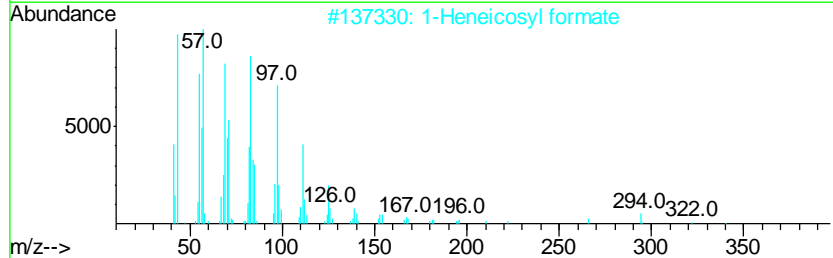
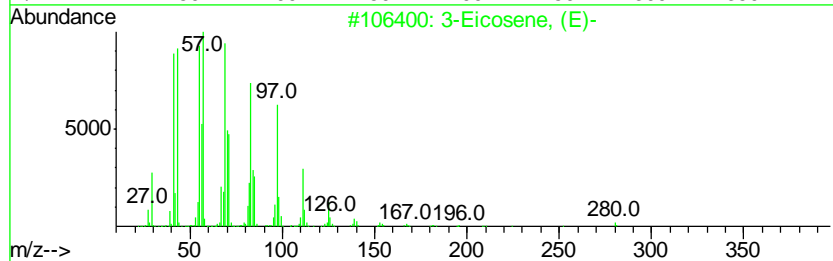
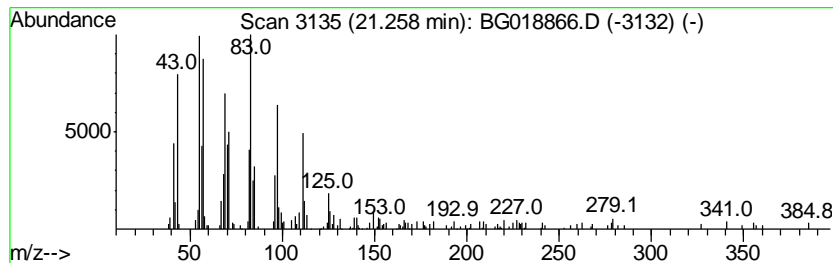
TIC Library : C:\DATABASE\NIST02.L  
 TIC Integration Parameters: LSCINT.P

\*\*\*\*\*  
 Peak Number 4 (DEL) Alkane: Cyclic21.26 Concentration Rank 5

R.T.	EstConc	Area	Relative to ISTD	R.T.
21.26	2.22 ng/ul	158108	Chrysene-d12	21.63

Hit#	of	Tentative ID	MW	MolForm	CAS#	Qual
1	5	3-Eicosene, (E)-	280	C20H40	074685-33-9	90
2		1-Heneicosyl formate	340	C22H44O2	077899-03-7	76
3		Heptafluorobutanoic acid, heptad...	452	C21H35F7O2	1000282-97-3	68
4		1-Pentadecene	210	C15H30	013360-61-7	64
5		1-Nonadecene	266	C19H38	018435-45-5	62



Data Path : Z:\HPCHEM1\BNA\_G\Data\BG092315\  
Data File : BG018866.D  
Acq On : 24 Sep 2015 00:41  
Operator : UM/NP  
Sample : G3759-04  
Misc :  
ALS Vial : 22 Sample Multiplier: 1

Instrument :  
BNA\_G  
ClientSampleId :  
JHAC2

Quant Method : Z:\HPCHEM1\BNA\_G\METHODS\SOM02.2-EPA-BG091015.M  
Quant Title : SVOA CALIBRATION

TIC Library : C:\DATABASE\NIST02.L  
TIC Integration Parameters: LSCINT.P

TIC Top Hit name	RT	EstConc	Units	Response	--Internal Standard--			
					#	RT	Resp	Conc
Butane, 2-methoxy...	3.18	38.1	ng/ul	752322	1	8.00	394911	20.0
n-Hexadecanoic acid	18.26	3.6	ng/ul	219139	4	17.37	1212970	20.0
(DEL) Alkane: Cyc...	21.26	2.2	ng/ul	158108	5	21.63	1423810	20.0