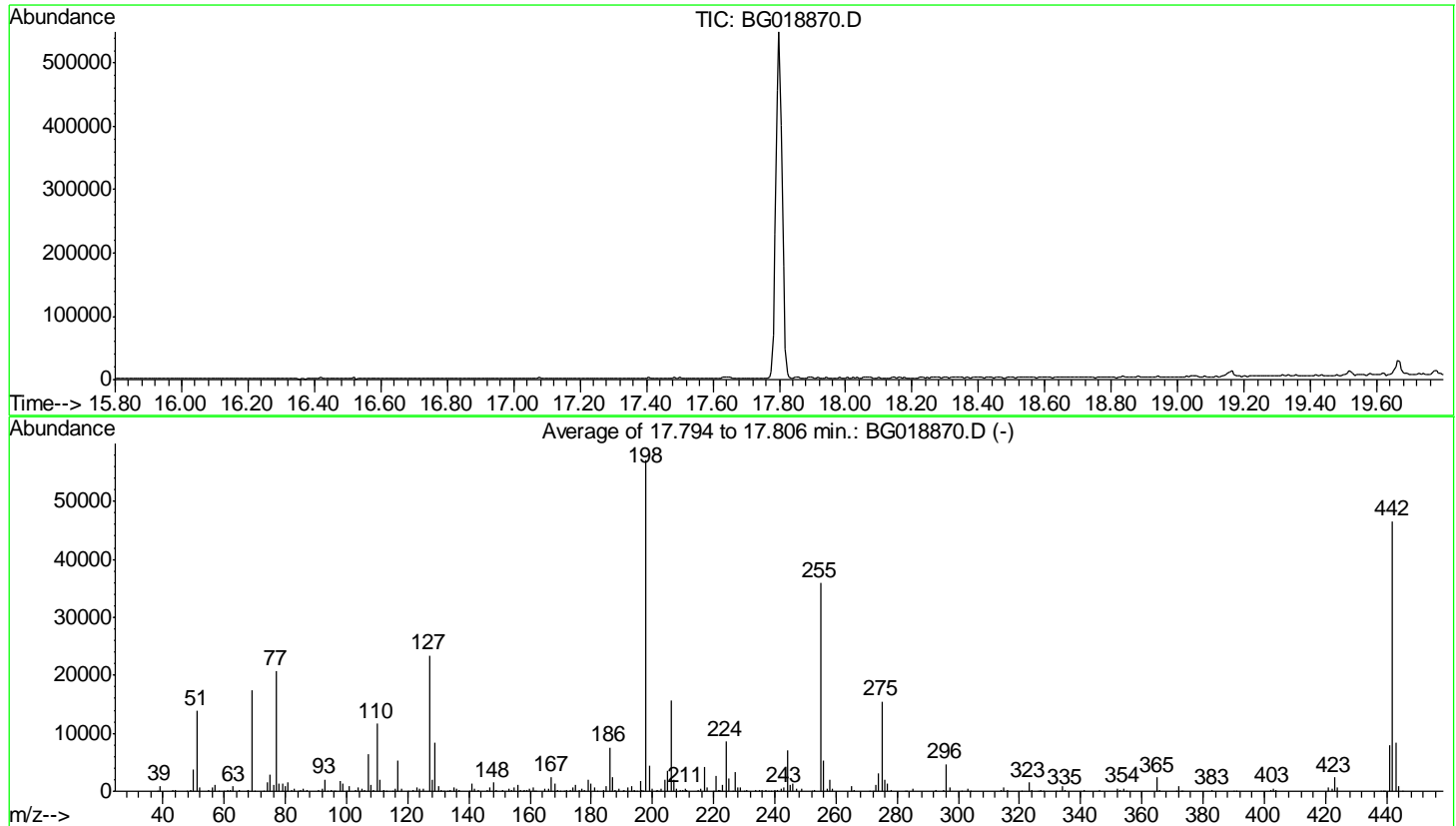


Data Path : Z:\HPCHEM1\BNA_G\DATA\BG092415\
 Data File : BG018870.D
 Acq On : 24 Sep 2015 16:02
 Operator : TP
 Sample : DFTPP51
 Misc :
 ALS Vial : 1 Sample Multiplier: 1

Instrument :
 BNA_G
 ClientSampleId :
 DFTPP51

Integration File: LSCINT.P

Method : Z:\HPCHEM1\BNA_G\METHODS\SOM02.2-EPA-BG091015.M
 Title : SVOA CALIBRATION
 Last Update : Fri Sep 25 19:03:45 2015



AutoFind: Scans 2545, 2546, 2547; Background Corrected with Scan 2539

Target Mass	Rel. to Mass	Lower Limit%	Upper Limit%	Rel. Abn%	Raw Abn	Result Pass/Fail
51	198	10	80	24.2	13845	PASS
68	69	0.00	2	0.8	138	PASS
69	198	0.00	100	30.6	17452	PASS
70	69	0.00	2	0.4	77	PASS
127	198	10	80	41.0	23394	PASS
197	198	0.00	2	0.2	87	PASS
198	198	100	100	100.0	57114	PASS
199	198	5	9	7.6	4344	PASS
275	198	10	60	27.1	15496	PASS
365	198	1	100	4.2	2405	PASS
441	442	0.01	24	17.3	8030	PASS
442	198	50	100	81.5	46538	PASS
443	442	15	24	18.1	8416	PASS

m/z	Abundance
38.00	169.0
39.00	1041.0
39.90	378.0
43.10	275.0
44.00	492.0
47.90	178.0
49.00	342.0
50.00	4420.0
51.00	16872.0
52.00	1085.0
55.00	258.0
56.00	607.0
56.90	1168.0
58.10	159.0
61.00	370.0
62.00	175.0
63.00	966.0
64.90	286.0
68.00	415.0
69.00	21336.0
73.00	460.0
74.00	1837.0
75.00	3575.0
76.00	1064.0
77.00	24288.0
78.00	1605.0
79.00	1370.0
79.90	1125.0
81.00	1505.0
81.90	406.0
83.00	240.0
84.00	257.0
84.90	329.0
85.90	427.0
87.00	175.0
90.90	532.0
91.90	227.0
92.90	2470.0
93.90	157.0
95.00	188.0
96.10	279.0
97.10	181.0
98.00	2013.0
98.90	1595.0
100.90	1282.0
102.90	306.0
104.00	897.0
104.90	483.0
106.00	305.0
107.00	6967.0
108.00	1472.0
109.00	304.0
109.90	13645.0
111.00	2227.0
111.90	287.0
116.00	445.0
116.90	6425.0
118.00	507.0
121.90	505.0
123.00	852.0
123.90	441.0
124.90	486.0
127.00	27424.0
127.90	1914.0
128.90	9832.0
130.00	946.0
130.90	220.0
131.90	167.0
134.00	315.0
135.00	789.0
135.90	408.0
137.00	274.0
140.90	1557.0
142.00	571.0
142.90	231.0
145.90	310.0
147.00	836.0
148.00	1904.0
148.90	330.0
151.00	211.0
153.00	486.0
154.00	266.0
154.90	560.0
156.00	1252.0
156.80	171.0
158.00	198.0
159.00	175.0
160.00	420.0
160.90	491.0
161.50	158.0
164.90	442.0

Instrument :
BNA_G
ClientSampleId :
DFTPP51

165.90	506.0
167.00	2832.0
168.00	1531.0
168.90	309.0
169.90	198.0
171.90	186.0
172.90	403.0
173.90	937.0
175.00	1320.0
175.90	407.0
176.80	507.0
177.90	186.0
178.90	2166.0
179.90	1497.0
181.00	814.0
182.10	169.0
183.80	194.0
184.90	1039.0
186.00	8991.0
187.00	2798.0
188.00	314.0
188.90	751.0
190.80	343.0
192.00	720.0
193.00	789.0
194.10	321.0
195.00	247.0
196.00	2222.0
197.90	67264.0
198.90	5533.0
199.90	443.0
201.50	239.0
202.90	542.0
204.00	2565.0
205.00	4305.0
206.00	18184.0
207.00	2687.0
207.90	855.0
208.90	326.0
209.90	181.0
210.90	819.0
214.90	209.0
215.80	474.0
216.90	4720.0
217.90	639.0
220.00	158.0
221.00	3183.0
222.10	582.0
222.90	947.0
224.00	10242.0
225.00	2159.0
227.00	4310.0
227.90	574.0
228.90	965.0
229.80	191.0
230.90	405.0
233.90	206.0
235.00	282.0
235.90	268.0
236.90	448.0
238.00	161.0
239.90	237.0
240.90	307.0
241.80	499.0
242.90	721.0
244.00	7838.0
245.00	1134.0
246.00	1332.0
246.90	484.0
249.00	426.0
253.00	217.0
255.00	42576.0
256.00	6082.0
256.90	459.0
258.00	2004.0
258.90	313.0
265.00	797.0
270.90	184.0
272.00	226.0
272.90	1136.0
274.00	3884.0
275.00	18416.0
275.90	1953.0
276.90	1226.0
277.90	266.0
282.70	152.0
285.00	406.0
292.90	336.0
294.90	205.0
295.90	5376.0
297.00	950.0
302.90	487.0
313.90	271.0
315.00	695.0
315.90	323.0

Instrument :
BNA_G
ClientSampleId :
DFTPP51

323.00	1607.0
324.00	355.0
325.90	249.0
326.80	220.0
327.90	158.0
332.00	184.0
334.00	968.0
335.00	304.0
341.00	153.0
346.00	288.0
352.00	311.0
354.00	517.0
365.00	2540.0
366.00	273.0
372.00	1033.0
372.90	233.0
382.90	251.0
390.00	187.0
390.90	163.0
402.00	415.0
403.00	456.0
404.00	183.0
420.90	761.0
422.00	489.0
423.00	3229.0
424.00	642.0
438.20	151.0
438.80	165.0
439.50	157.0
441.00	9485.0
442.00	54800.0
443.10	9756.0
444.10	1047.0

Instrument :
BNA_G
ClientSampleId :
DFTPP51

m/z	Abundance
38.00	163.0
39.00	1027.0
39.90	517.0
41.00	348.0
43.00	241.0
44.00	382.0
49.00	218.0
50.00	4535.0
51.00	14362.0
52.00	886.0
55.00	283.0
55.90	806.0
57.00	1412.0
60.00	152.0
60.90	324.0
62.00	203.0
63.00	848.0
65.00	317.0
67.30	164.0
68.90	18872.0
70.00	231.0
73.90	1693.0
75.00	3067.0
76.00	1157.0
77.00	21920.0
78.00	1244.0
79.00	1338.0
79.90	925.0
81.00	1522.0
81.90	279.0
83.00	686.0
84.00	256.0
84.90	268.0
85.90	474.0
90.90	326.0
91.90	317.0
92.90	2248.0
95.00	220.0
95.90	344.0
98.00	1992.0
98.90	1534.0
99.90	215.0
100.90	995.0
102.90	323.0
103.90	589.0
105.00	304.0
106.00	408.0
107.00	7282.0
108.00	1268.0
109.00	175.0
110.00	11956.0
111.00	2143.0
112.00	161.0
112.90	263.0
115.90	302.0
116.90	5597.0
117.90	304.0
120.10	192.0
121.90	410.0
123.00	626.0
123.90	439.0
125.00	462.0
127.00	24144.0
128.00	2292.0
129.00	8817.0
129.90	881.0
131.00	190.0
132.90	179.0
133.90	356.0
134.90	698.0
136.00	336.0
136.90	418.0
140.90	1455.0
141.90	335.0
142.90	477.0
146.00	249.0
147.00	485.0
148.00	1572.0
149.00	337.0
151.00	192.0
152.90	467.0
154.00	357.0
155.00	1015.0
156.00	1100.0
157.00	197.0
157.70	217.0
159.00	222.0
159.90	505.0
160.90	669.0
161.90	178.0
164.90	713.0

Instrument :
BNA_G
ClientSampleId :
DFTPP51

166.00	366.0
167.00	2443.0
168.00	1575.0
168.90	194.0
171.90	156.0
173.00	381.0
173.90	494.0
175.00	956.0
175.90	246.0
176.90	469.0
177.80	212.0
178.90	1804.0
179.90	1463.0
181.00	523.0
184.90	921.0
186.00	7171.0
187.00	2413.0
187.90	282.0
189.00	501.0
190.10	192.0
190.90	189.0
192.00	588.0
193.00	974.0
193.90	290.0
196.00	1939.0
196.60	416.0
197.90	55936.0
198.90	3788.0
199.90	507.0
201.30	218.0
202.10	215.0
202.90	434.0
204.00	1600.0
205.00	3228.0
206.00	15861.0
207.00	2475.0
208.00	911.0
209.00	423.0
209.90	334.0
210.80	513.0
214.90	329.0
215.90	184.0
216.90	4136.0
217.90	608.0
220.90	2557.0
221.90	423.0
222.90	1205.0
224.00	8781.0
225.00	2443.0
226.10	176.0
227.00	3177.0
227.90	474.0
228.90	744.0
230.90	249.0
233.90	380.0
235.00	279.0
235.80	178.0
236.90	222.0
238.80	289.0
239.90	151.0
242.00	473.0
243.00	626.0
244.00	7130.0
245.00	1183.0
245.90	1085.0
246.90	334.0
248.90	327.0
252.10	196.0
252.90	243.0
255.00	33336.0
256.00	4932.0
256.90	474.0
257.90	1897.0
259.00	488.0
264.90	755.0
265.80	200.0
272.90	1130.0
273.90	2040.0
275.00	14505.0
276.00	2147.0
276.90	1124.0
283.10	174.0
284.90	219.0
292.80	319.0
296.00	4274.0
297.10	672.0
300.80	167.0
303.00	505.0
314.90	611.0
316.00	422.0
323.00	1078.0
324.00	182.0
327.00	312.0
334.00	712.0
335.00	311.0

Instrument :
BNA_G
ClientSampleId :
DFTPP51

352.00	402.0
353.00	317.0
354.00	314.0
355.10	230.0
365.00	2240.0
371.00	188.0
372.00	741.0
383.00	320.0
401.90	275.0
403.00	401.0
421.00	506.0
422.10	404.0
423.00	1681.0
423.90	744.0
441.00	5900.0
442.00	37184.0
443.00	6767.0
444.00	647.0
445.00	151.0

Instrument :
BNA_G
ClientSampleId :
DFTPP51

m/z	Abundance
40.00	440.0
41.10	285.0
43.90	356.0
73.00	227.0
83.90	157.0
91.00	225.0
97.10	212.0
207.00	373.0
208.10	243.0

Instrument :
BNA_G
ClientSampleId :
DFTPP51

m/z	Abundance
39.00	724.0
39.90	350.0
41.00	215.0
44.00	571.0
48.90	216.0
50.00	2358.0
51.00	10302.0
52.00	353.0
55.90	411.0
57.00	642.0
61.90	264.0
63.00	613.0
65.00	257.0
68.90	12150.0
72.80	289.0
74.00	1326.0
75.00	1894.0
76.00	816.0
77.00	16217.0
78.00	1123.0
78.90	1103.0
80.00	656.0
81.00	1377.0
82.00	227.0
83.00	374.0
84.00	297.0
84.80	312.0
85.90	292.0
87.00	196.0
91.00	276.0
92.00	473.0
93.00	1304.0
94.90	165.0
98.00	1603.0
98.90	986.0
100.90	615.0
103.00	215.0
103.90	403.0
105.00	438.0
106.00	227.0
107.00	5051.0
107.90	899.0
109.90	9406.0
111.00	1428.0
111.90	282.0
114.90	165.0
115.90	279.0
116.90	3815.0
117.80	366.0
122.90	594.0
123.80	354.0
125.00	345.0
127.00	18616.0
128.00	1652.0
128.90	6790.0
130.00	781.0
133.90	279.0
134.90	741.0
136.00	275.0
136.90	179.0
140.00	150.0
140.90	934.0
141.90	283.0
142.90	251.0
146.00	222.0
147.00	550.0
148.00	1004.0
149.10	179.0
152.90	371.0
154.00	325.0
154.90	473.0
155.90	660.0
157.00	170.0
157.90	282.0
158.90	151.0
159.90	348.0
161.00	553.0
164.90	414.0
165.90	378.0
167.00	2183.0
167.90	906.0
169.00	172.0
171.10	168.0
172.00	240.0
174.00	379.0
175.00	916.0
176.00	204.0
176.90	346.0
177.90	188.0
178.90	2282.0
180.00	1055.0

Instrument :
BNA_G
ClientSampleId :
DFTPP51

180.90	577.0
183.90	221.0
184.90	643.0
186.00	6401.0
187.00	1835.0
188.00	348.0
188.90	299.0
190.90	236.0
192.00	427.0
193.00	761.0
194.00	272.0
195.90	1292.0
196.90	262.0
197.90	48144.0
198.90	3711.0
199.90	385.0
201.40	350.0
202.90	242.0
204.00	1931.0
205.00	2846.0
206.00	12845.0
206.90	1681.0
207.90	365.0
209.90	278.0
211.10	442.0
215.90	423.0
216.90	3506.0
217.90	696.0
220.90	1981.0
221.70	505.0
222.90	1199.0
224.00	6776.0
225.00	2019.0
226.90	2722.0
227.90	687.0
229.00	460.0
230.80	189.0
233.80	283.0
235.00	311.0
237.00	171.0
241.00	235.0
242.00	488.0
243.00	407.0
244.00	5926.0
244.90	877.0
245.90	1397.0
246.80	199.0
249.00	278.0
252.90	153.0
254.90	31848.0
256.00	5105.0
257.00	374.0
258.00	1857.0
258.90	215.0
264.90	996.0
265.90	190.0
273.00	1100.0
274.00	3288.0
275.00	13567.0
276.00	1979.0
277.00	1498.0
277.90	334.0
285.00	392.0
292.90	180.0
295.00	182.0
295.90	4403.0
297.00	508.0
303.00	381.0
304.10	180.0
313.90	241.0
314.90	782.0
315.90	190.0
320.70	170.0
323.00	1672.0
324.00	180.0
327.00	346.0
333.00	196.0
334.00	1061.0
335.00	344.0
341.00	287.0
346.00	403.0
352.10	432.0
353.00	481.0
354.00	536.0
365.00	2436.0
365.90	323.0
372.00	658.0
373.10	263.0
382.90	296.0
402.00	318.0
402.90	580.0
404.00	181.0
421.00	477.0
422.00	368.0
423.00	2346.0

Instrument :
BNA_G
ClientSampleId :
DFTPP51

423.90	520.0
441.00	8705.0
442.00	47632.0
443.00	8726.0
444.00	976.0

Instrument :
BNA_G
ClientSampleId :
DFTPP51