

Data Path : U:\HPCHEM1\BNA G\DATA\BG092915\
 Data File : BG018957.D
 Acq On : 29 Sep 2015 14:50
 Operator : UM/NP
 Sample : G3803-11
 Misc :
 ALS Vial : 18 Sample Multiplier: 1

Instrument :
 BNA_G
 ClientSampled :
 E43K1

Manual Integrations
 APPROVED

MMDadoda
 9/30/2015 3:49:17 PM

Quant Time: Sep 30 07:34:38 2015
 Quant Method : Z:\HPCHEM1\BNA G\METHODS\SOM02.2-EPA-BG091015.M
 Quant Title : SVOA CALIBRATION
 QLast Update : Wed Sep 30 02:21:20 2015
 Response via : Initial Calibration

Internal Standards	R.T.	QIon	Response	Conc	Units	Dev(Min)
1) 1,4-Dichlorobenzene-d4	7.99	152	51892	20.00	ng/ul	0.00
18) Naphthalene-d8	10.79	136	222245	20.00	ng/ul	0.00
36) Acenaphthene-d10	14.61	164	154023	20.00	ng/ul	0.00
62) Phenanthrene-d10	17.36	188	428587	20.00	ng/ul	0.00
78) Chrysene-d12	21.61	240	510230	20.00	ng/ul	0.00
86) Perylene-d12	24.79	264	512201	20.00	ng/ul	0.00

System Monitoring Compounds

3) 1,4-Dioxane-d8	3.42	96	1097	1.02	ng/uL	0.00
5) Phenol-d5	7.16	99	24400	5.73	ng/ul	0.00
7) Bis-(2-Chloroethyl)ether-d	7.31	67	52428	21.23	ng/ul	0.00
9) 2-Chlorophenol-d4	7.52	132	65371	20.26	ng/ul	0.00
13) 4-Methylphenol-d8	8.70	113	47274	13.67	ng/ul	0.00
19) Nitrobenzene-d5	9.14	128	38774	23.03	ng/ul	0.00
22) 2-Nitrophenol-d4	9.87	143	45103	26.64	ng/ul	0.00
26) 2,4-Dichlorophenol-d3	10.42	165	86714m	24.32	ng/ul	0.00
29) 4-Chloroaniline-d4	10.92	131	56535	13.63	ng/ul	0.00
44) Dimethylphthalate-d6	14.01	166	298905	24.11	ng/ul	0.00
47) Acenaphthylene-d8	14.31	160	276968	18.86	ng/ul	0.00
52) 4-Nitrophenol-d4	14.82	143	15767	6.63	ng/ul	0.00
58) Fluorene-d10	15.60	176	178688	16.49	ng/ul	0.00
63) 4,6-Dinitro-2-methylphenol	15.72	200	39726	19.58	ng/ul	0.00
71) Anthracene-d10	17.45	188	126466	6.70	ng/ul	0.00
79) Pyrene-d10	19.74	212	326436	13.91	ng/ul	0.00
90) Benzo(a)pyrene-d12	24.56	264	246899	9.90	ng/ul	0.00

Target Compounds

Target Compounds	R.T.	QIon	Response	Conc	Units	Ovalue
28) Naphthalene	10.84	128	159281	14.08	ng/ul	98
33) 4-Chloro-3-methylphenol	12.05	107	5013	1.32	ng/ul#	76
34) 2-Methylnaphthalene	12.44	142	56641	6.78	ng/ul	89
35) 1-Methylnaphthalene	12.66	142	40185	5.02	ng/ul	96
41) 1,1'-Biphenyl	13.44	154	12550	1.08	ng/ul#	96
45) Dimethylphthalate	14.06	163	62960	5.24	ng/ul	97
57) Diethylphthalate	15.42	149	18969	1.52	ng/ul	97
65) N-Nitrosodiphenylamine	15.86	169	15099	1.35	ng/ul	96
75) Carbazole	17.76	167	32832	1.69	ng/ul	96

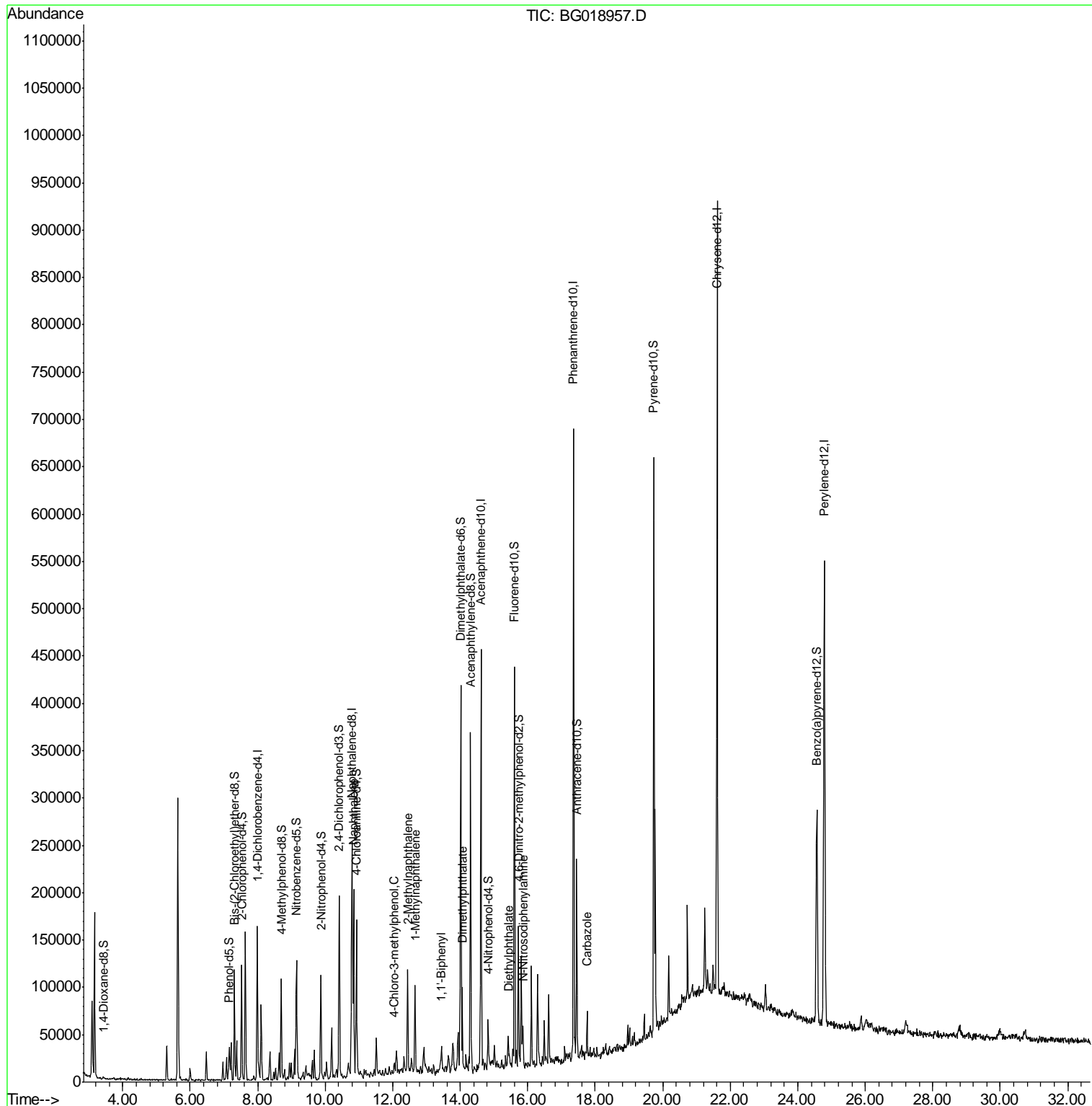
(#) = qualifier out of range (m) = manual integration (+) = signals summed

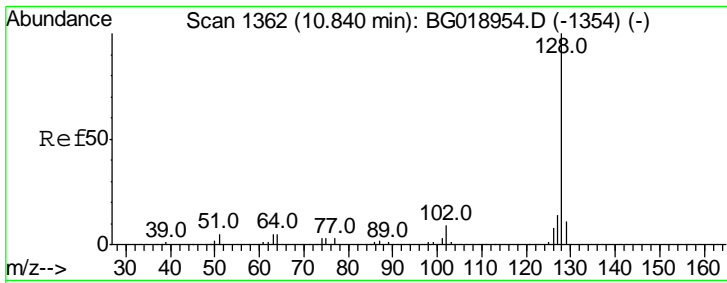
Data Path : U:\HPCHEM1\BNA G\DATA\BG092915\
 Data File : BG018957.D
 Acq On : 29 Sep 2015 14:50
 Operator : UM/NP
 Sample : G3803-11
 Misc :
 ALS Vial : 18 Sample Multiplier: 1

Instrument :
 BNA_G
 ClientSampled :
 E43K1

Manual Integrations
 APPROVED
 MMDadoda
 9/30/2015 3:49:17 PM

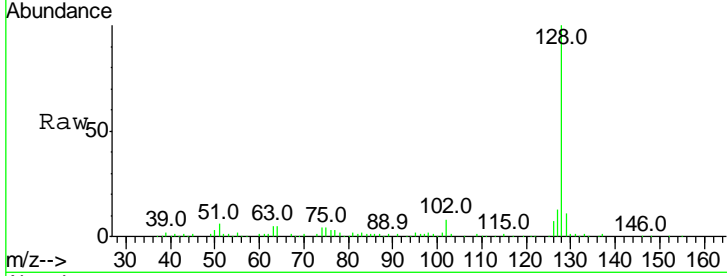
Quant Time: Sep 30 07:34:38 2015
 Quant Method : Z:\HPCHEM1\BNA G\METHODS\SOM02.2-EPA-BG091015.M
 Quant Title : SVOA CALIBRATION
 QLast Update : Wed Sep 30 02:21:20 2015
 Response via : Initial Calibration





#28
 Naphthalene
 Concen: 14.08 ng/ul
 RT: 10.84 min Scan# 1362
 Delta R.T. -0.00 min
 Lab File: BG018957.D
 Acq: 29 Sep 2015 14:50

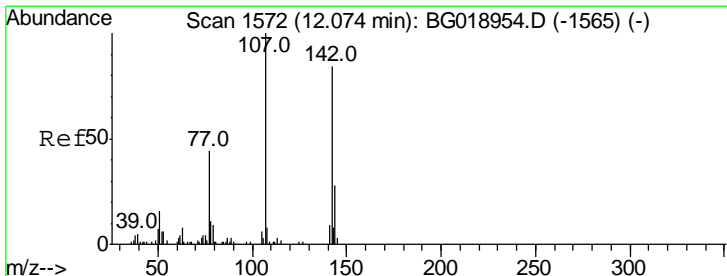
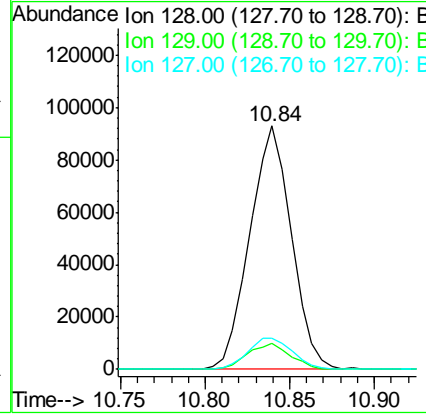
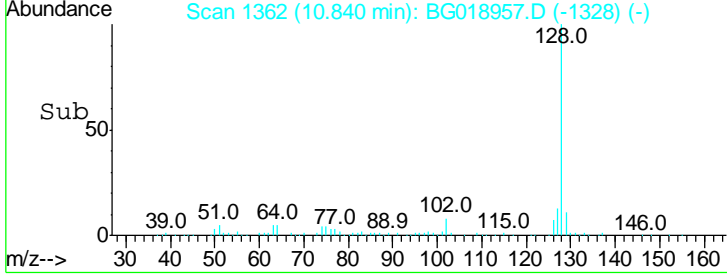
Instrument :
 BNA_G
 ClientSampled :
 E43K1



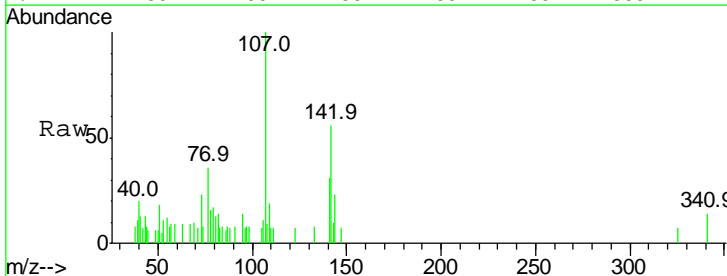
Tgt Ion:128 Resp: 159281

Ion	Ratio	Lower	Upper
128	100		
129	10.9	9.6	14.4
127	12.9	10.5	15.7

Manual Integrations
 APPROVED
 MMDadoda
 9/30/2015 3:49:17 PM

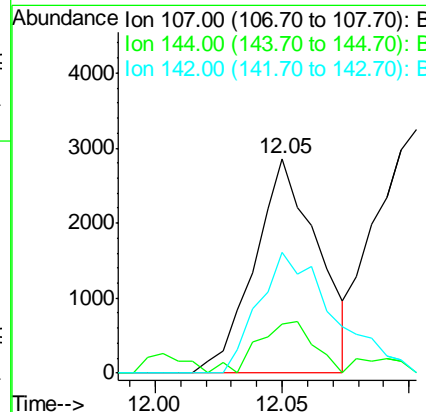
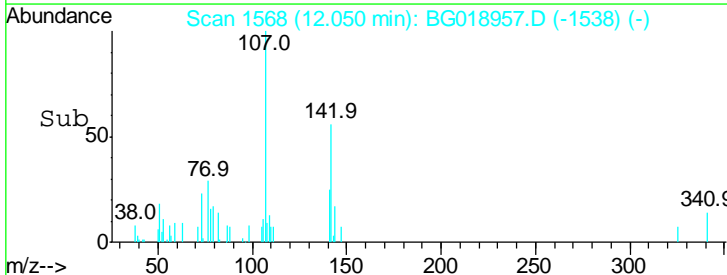


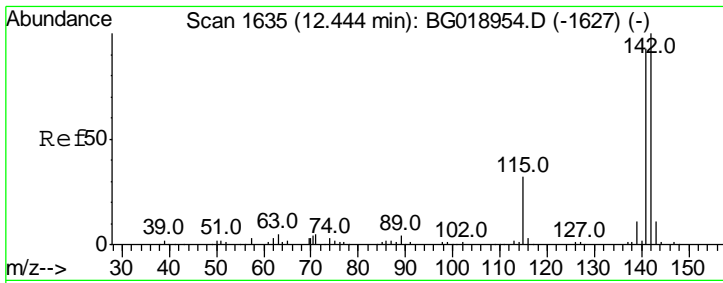
#33
 4-Chloro-3-methylphenol
 Concen: 1.32 ng/ul
 RT: 12.05 min Scan# 1568
 Delta R.T. -0.02 min
 Lab File: BG018957.D
 Acq: 29 Sep 2015 14:50



Tgt Ion:107 Resp: 5013

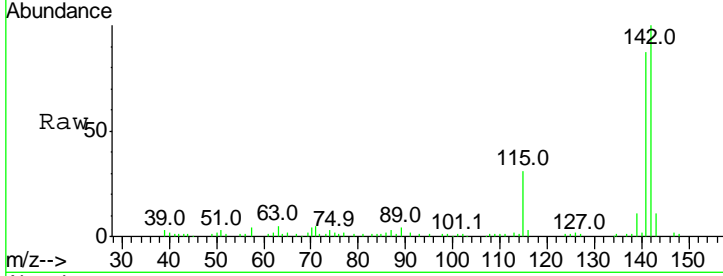
Ion	Ratio	Lower	Upper
107	100		
144	23.1	21.4	32.2
142	56.1	66.0	99.0#





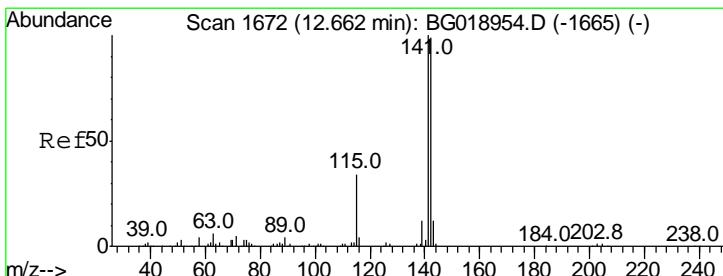
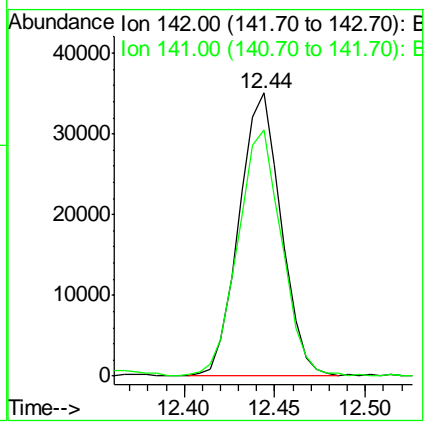
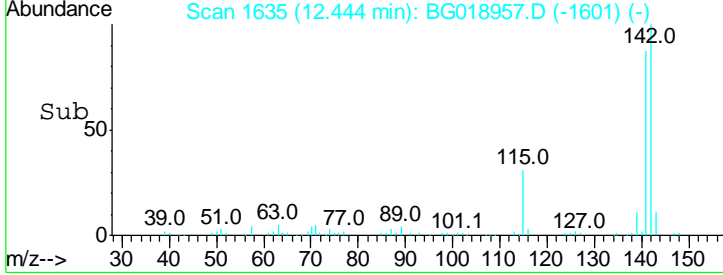
#34
 2-Methylnaphthalene
 Concen: 6.78 ng/ul
 RT: 12.44 min Scan# 1635
 Delta R.T. -0.00 min
 Lab File: BG018957.D
 Acq: 29 Sep 2015 14:50

Instrument :
 BNA_G
 ClientSampled :
 E43K1

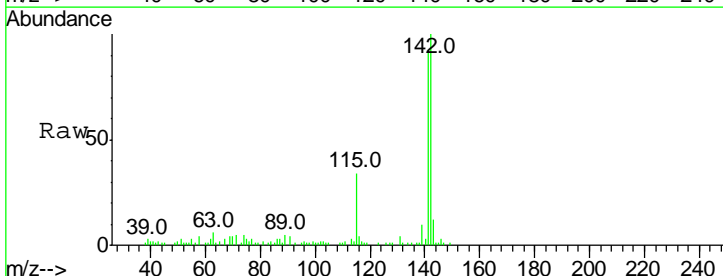


Tgt Ion:142 Resp: 56641
 Ion Ratio Lower Upper
 142 100
 141 86.9 78.0 117.0

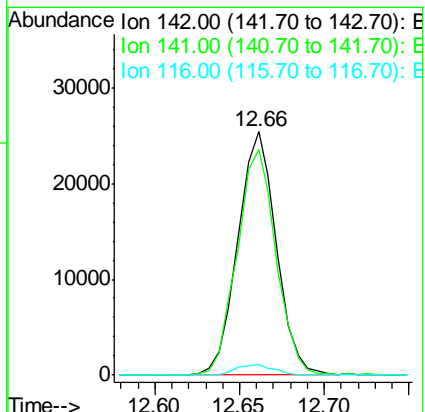
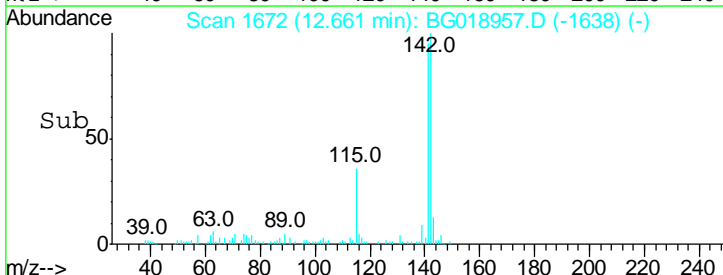
Manual Integrations
 APPROVED
 MMDadoda
 9/30/2015 3:49:17 PM

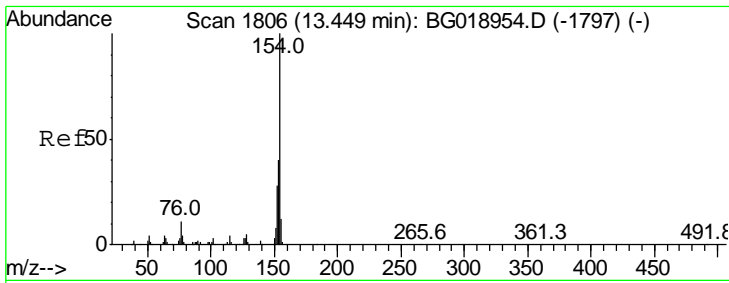


#35
 1-Methylnaphthalene
 Concen: 5.02 ng/ul
 RT: 12.66 min Scan# 1672
 Delta R.T. -0.00 min
 Lab File: BG018957.D
 Acq: 29 Sep 2015 14:50



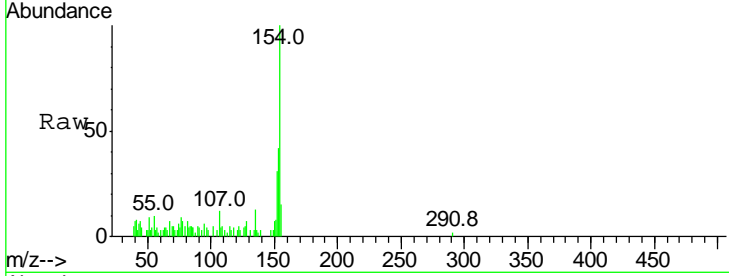
Tgt Ion:142 Resp: 40185
 Ion Ratio Lower Upper
 142 100
 141 92.5 77.1 115.7
 116 4.3 3.5 5.3





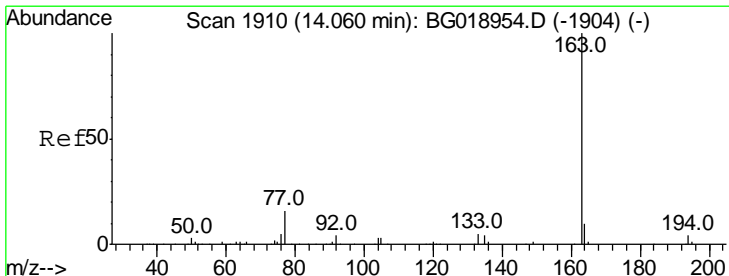
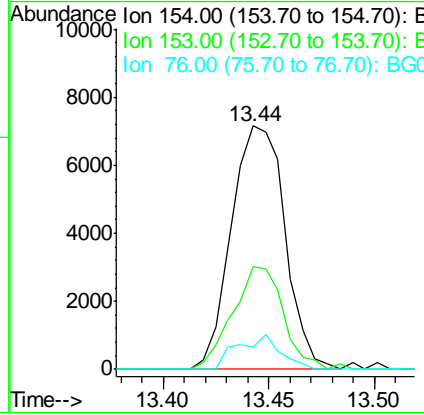
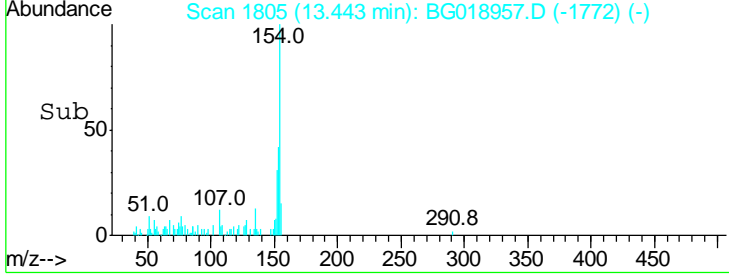
#41
 1,1'-Biphenyl
 Concen: 1.08 ng/ul
 RT: 13.44 min Scan# 1805
 Delta R.T. -0.01 min
 Lab File: BG018957.D
 Acq: 29 Sep 2015 14:50

Instrument :
 BNA_G
ClientSampled :
 E43K1

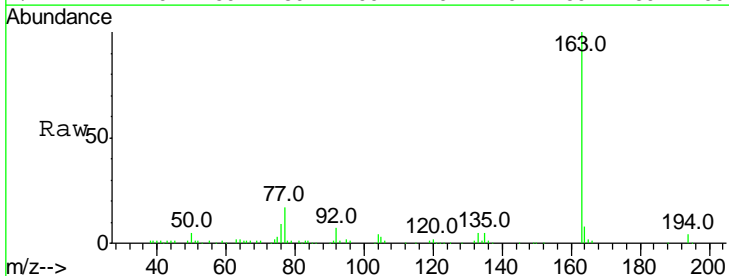


Tgt Ion	Resp	Lower	Upper
154	100		
153	42.3	35.2	52.8
76	9.1	10.6	16.0

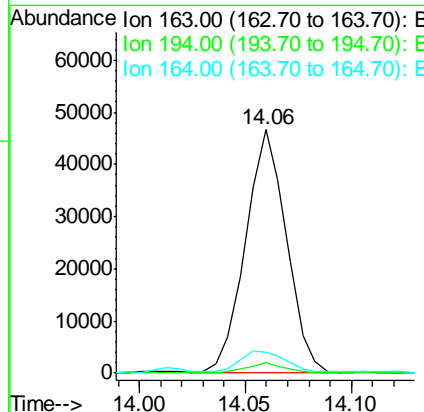
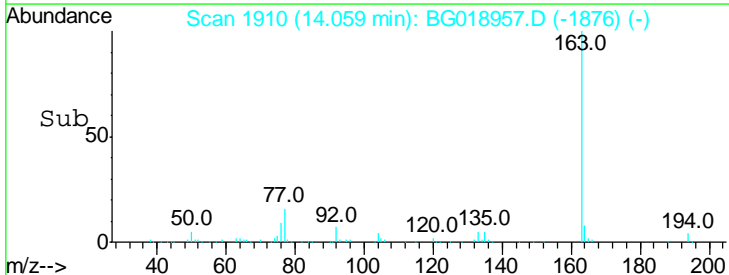
Manual Integrations
APPROVED
 MMDadoda
 9/30/2015 3:49:17 PM

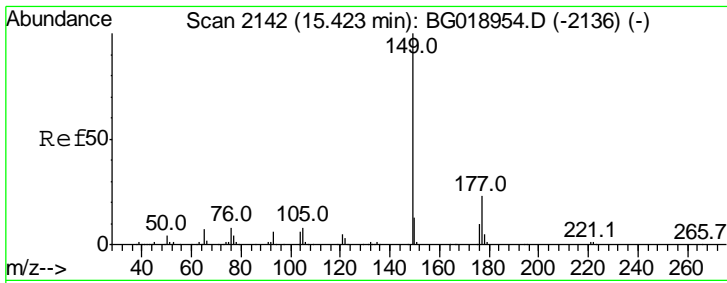


#45
 Dimethylphthalate
 Concen: 5.24 ng/ul
 RT: 14.06 min Scan# 1910
 Delta R.T. -0.00 min
 Lab File: BG018957.D
 Acq: 29 Sep 2015 14:50



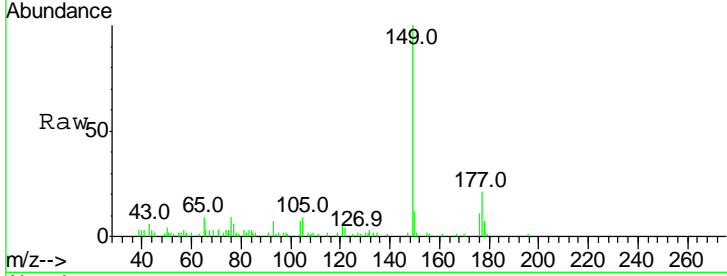
Tgt Ion	Resp	Lower	Upper
163	100		
194	4.2	2.9	4.3
164	8.3	7.7	11.5





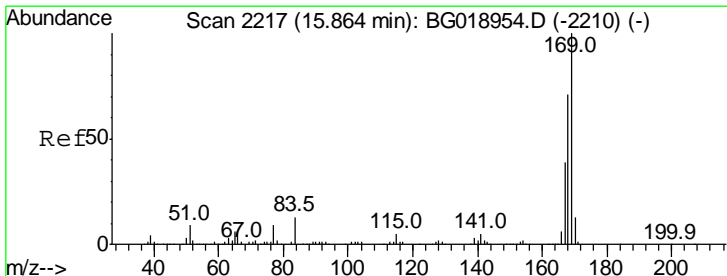
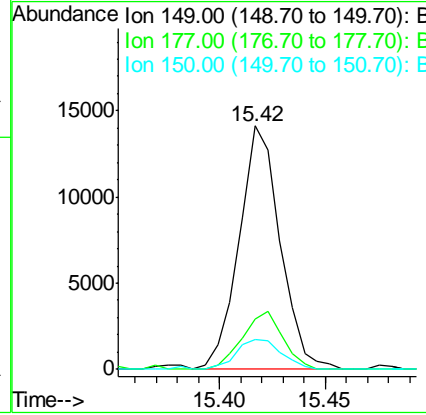
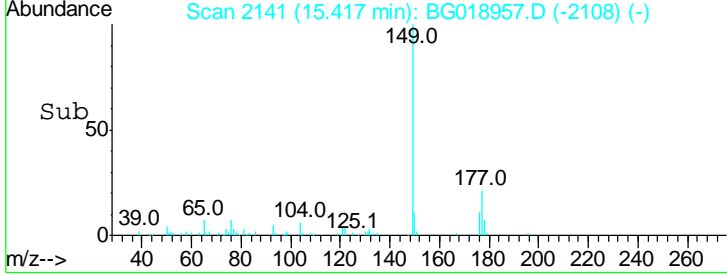
#57
 Diethylphthalate
 Concen: 1.52 ng/ul
 RT: 15.42 min Scan# 2141
 Delta R.T. -0.01 min
 Lab File: BG018957.D
 Acq: 29 Sep 2015 14:50

Instrument :
 BNA_G
 ClientSampled :
 E43K1

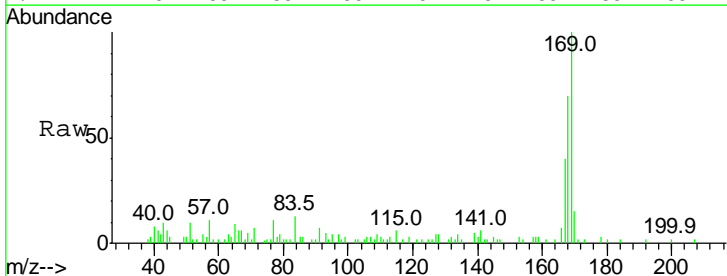


Tgt Ion	Resp	Lower	Upper
149	18969		
177	20.9	18.2	27.4
150	12.1	9.7	14.5

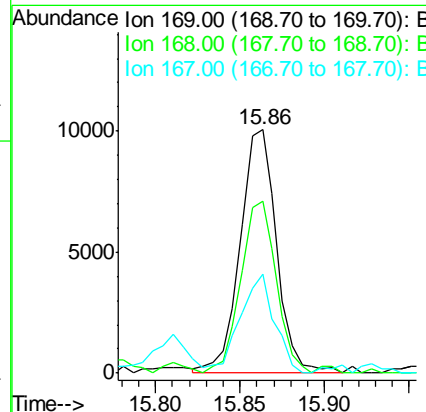
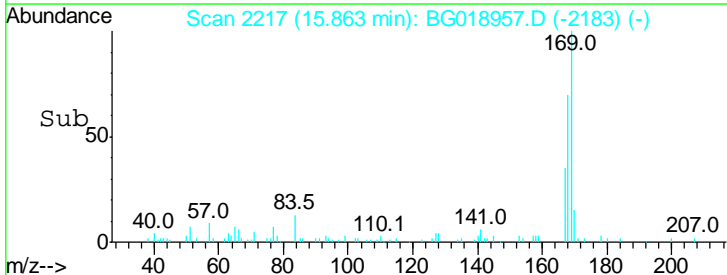
Manual Integrations
 APPROVED
 MMDadoda
 9/30/2015 3:49:17 PM

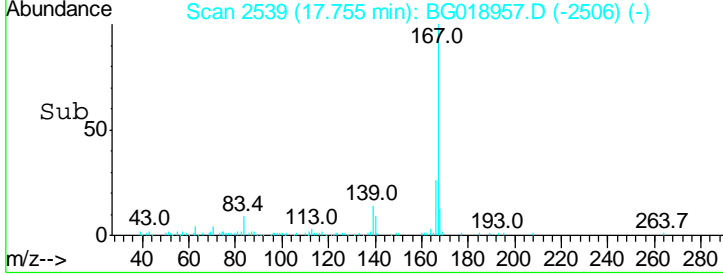
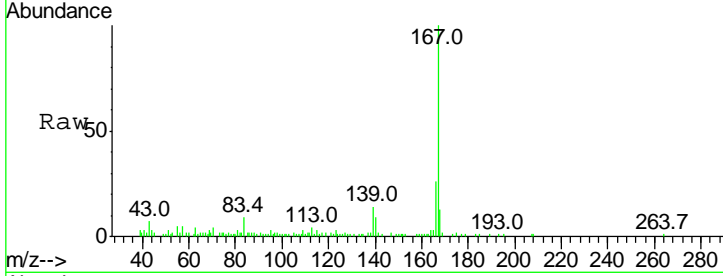
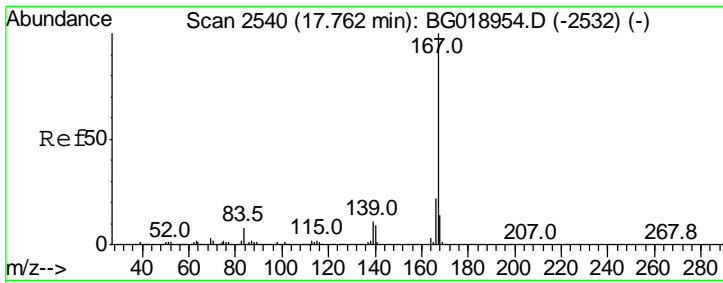


#65
 N-Nitrosodiphenylamine
 Concen: 1.35 ng/ul
 RT: 15.86 min Scan# 2217
 Delta R.T. -0.00 min
 Lab File: BG018957.D
 Acq: 29 Sep 2015 14:50



Tgt Ion	Resp	Lower	Upper
169	15099		
168	70.4	60.2	90.2
167	40.4	33.4	50.2





#75
 Carbazole
 Concen: 1.69 ng/ul
 RT: 17.76 min Scan# 2539
 Delta R.T. -0.01 min
 Lab File: BG018957.D
 Acq: 29 Sep 2015 14:50

Tot Ion	Ratio	Lower	Upper
167	100		
166	25.9	18.9	28.3
139	13.7	10.1	15.1

Instrument :
 BNA_G
 ClientSampled :
 E43K1

Manual Integrations
 APPROVED
 MMDadoda
 9/30/2015 3:49:17 PM

