

Data Path : Z:\HPCHEM1\BNA G\DATA\BG093016\  
 Data File : BG024165.D  
 Acq On : 30 Sep 2016 18:44  
 Operator : UM/SJ  
 Sample : H4998-14  
 Misc :  
 ALS Vial : 8 Sample Multiplier: 1

Instrument :  
 BNA\_G  
 ClientSampleId :  
 SUP-B046-12-13

Integration Parameters: rteint.p  
 Integrator: RTE  
 Smoothing : ON Filtering: 5  
 Sampling : 1 Min Area: 3 % of largest Peak  
 Start Thrs: 0.2 Max Peaks: 100  
 Stop Thrs : 0 Peak Location: TOP

If leading or trailing edge < 100 prefer < Baseline drop else tangent >  
 Peak separation: 5

Method : Z:\HPCHEM1\BNA G\METHODS\8270-BG092316.M  
 Title : ASP BNA STANDARDS FOR 5 POINT CALIBRATION

Signal : TIC

peak #	R.T. min	first scan	max scan	last scan	PK TY	peak height	corr. area	corr. % max.	% of total
1	2.894	5	9	27	rVB	3654344	5236785	100.00%	19.091%
2	5.097	380	384	394	rVB2	172225	293052	5.60%	1.068%
3	5.578	461	466	478	rBV	769825	1326572	25.33%	4.836%
4	7.200	736	742	759	rBV	833100	1615882	30.86%	5.891%
5	7.564	798	804	816	rVB	854738	1484884	28.35%	5.413%
6	8.034	878	884	892	rVB2	183105	311285	5.94%	1.135%
7	8.357	932	939	949	rBV	591444	1040442	19.87%	3.793%
8	9.215	1078	1085	1098	rBV2	522511	1023422	19.54%	3.731%
9	10.865	1360	1366	1382	rBV	235853	465174	8.88%	1.696%
10	13.315	1776	1783	1797	rBV	1466779	2339462	44.67%	8.529%
11	14.155	1918	1926	1936	rBV	642931	998488	19.07%	3.640%
12	14.707	2013	2020	2030	rBV	469128	747243	14.27%	2.724%
13	16.211	2269	2276	2294	rBV	1364238	2306527	44.04%	8.409%
14	16.393	2303	2307	2311	rBV2	39338	65266	1.25%	0.238%
15	17.474	2484	2491	2504	rBV2	658631	1120095	21.39%	4.083%
16	18.344	2634	2639	2644	rBV3	56666	84720	1.62%	0.309%
17	20.082	2929	2935	2944	rBV	3409721	4427998	84.56%	16.143%
18	21.375	3149	3155	3158	rBV7	31619	64295	1.23%	0.234%
19	21.780	3218	3224	3232	rBV	719428	1282572	24.49%	4.676%
20	25.105	3781	3790	3804	rVB2	383298	1196123	22.84%	4.361%

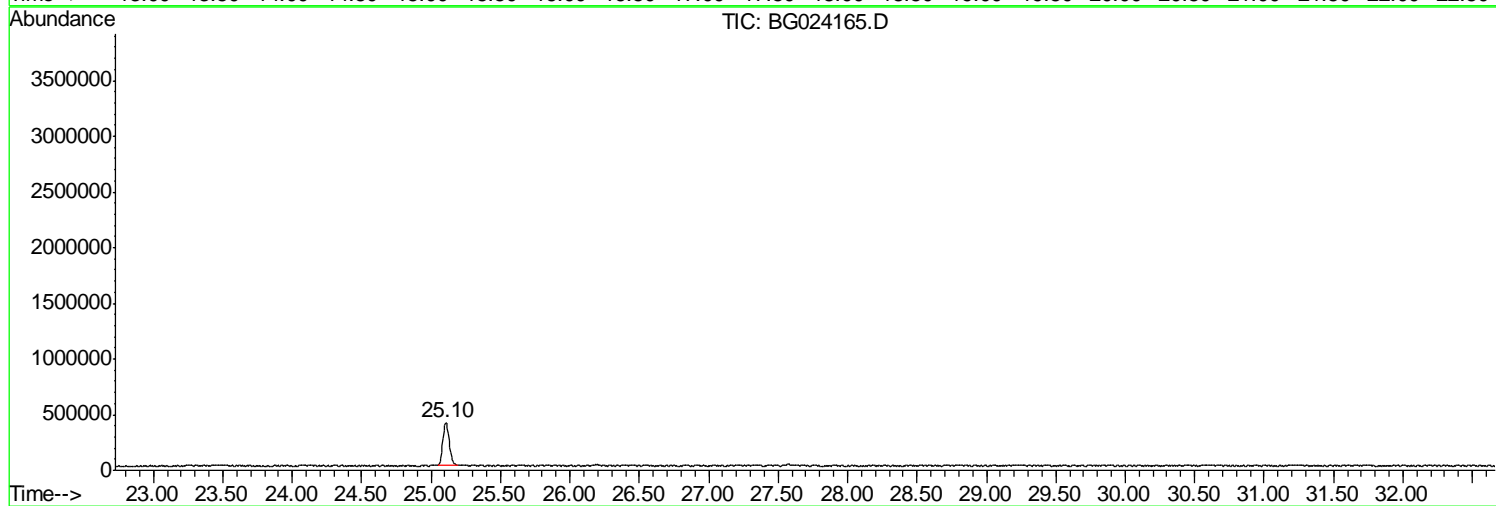
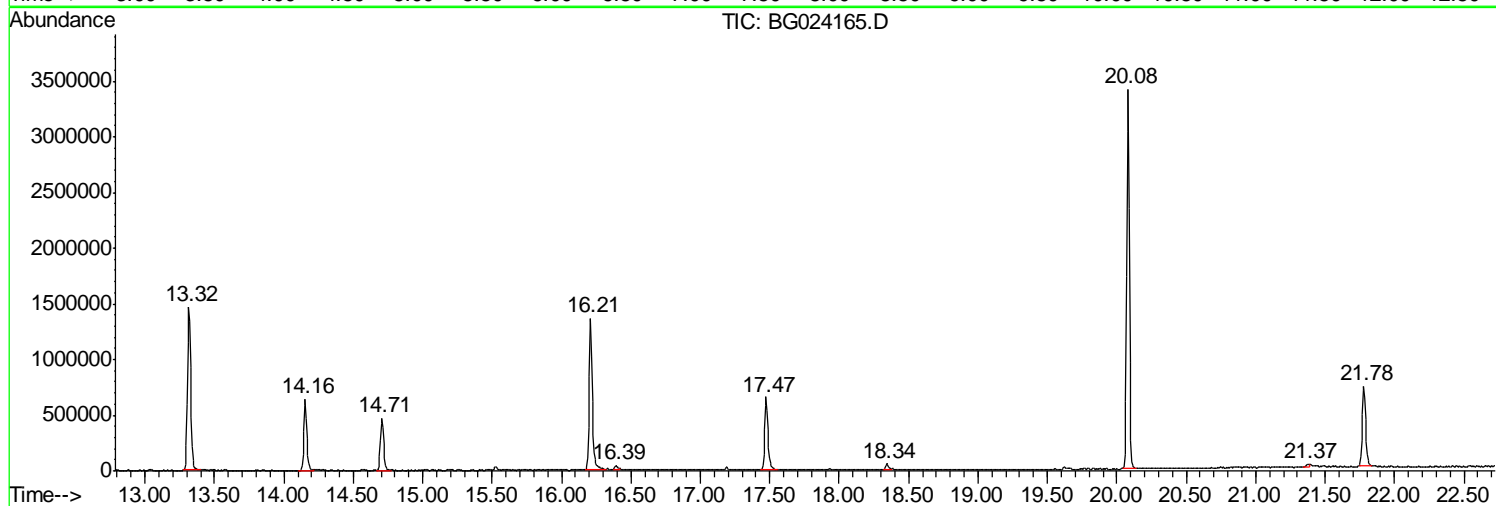
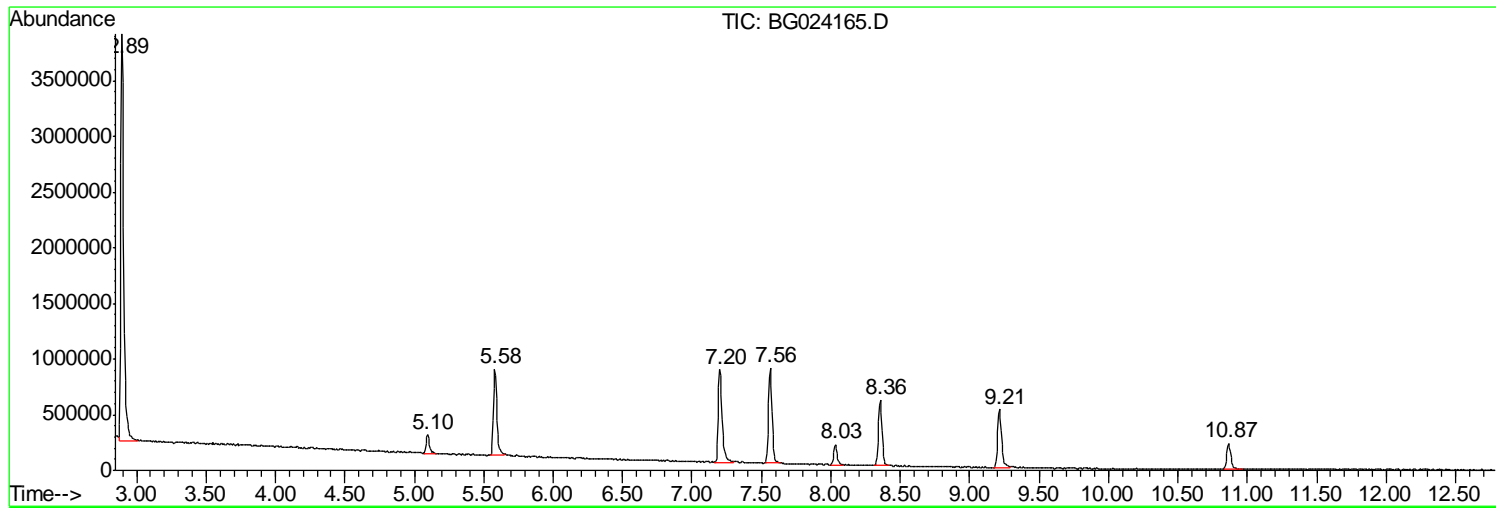
Sum of corrected areas: 27430287

Data Path : Z:\HPCHEM1\BNA G\DATA\BG093016\  
Data File : BG024165.D  
Acq On : 30 Sep 2016 18:44  
Operator : UM/SJ  
Sample : H4998-14  
Misc :  
ALS Vial : 8 Sample Multiplier: 1

Instrument :  
BNA\_G  
ClientSampled :  
SUP-B046-12-13

Quant Method : Z:\HPCHEM1\BNA G\METHODS\8270-BG092316.M  
Quant Title : ASP BNA STANDARDS FOR 5 POINT CALIBRATION

TIC Library : C:\DATABASE\NIST11.L  
TIC Integration Parameters: LSCINT.P



Data Path : Z:\HPCHEM1\BNA G\DATA\BG093016\  
 Data File : BG024165.D  
 Acq On : 30 Sep 2016 18:44  
 Operator : UM/SJ  
 Sample : H4998-14  
 Misc :  
 ALS Vial : 8 Sample Multiplier: 1

Instrument :  
 BNA\_G  
 ClientSampleID :  
 SUP-B046-12-13

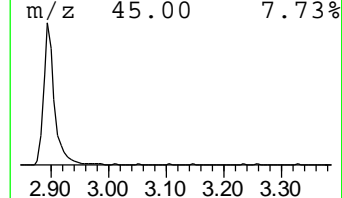
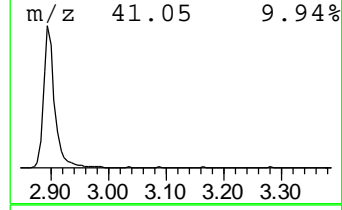
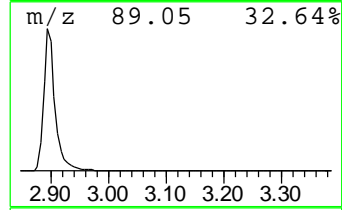
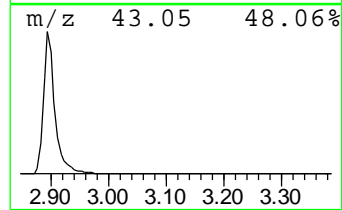
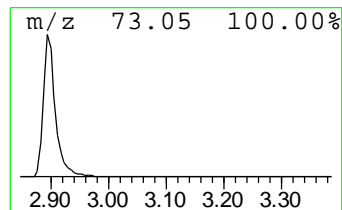
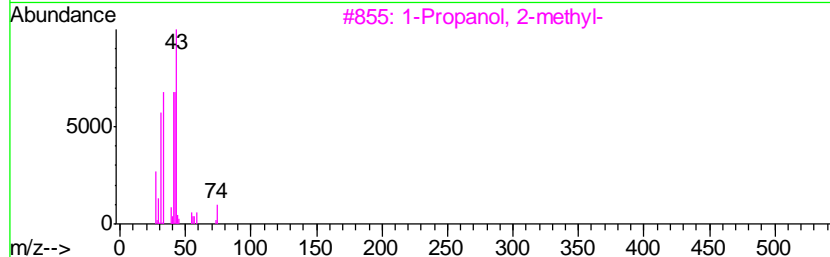
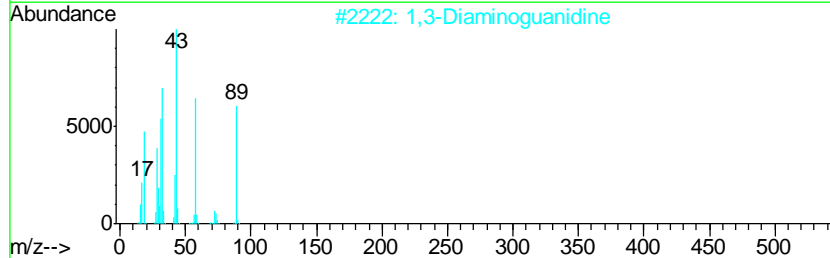
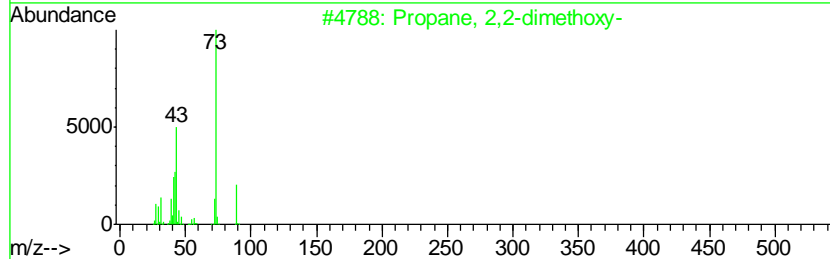
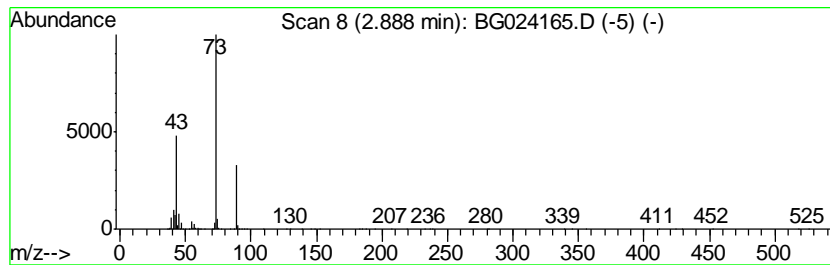
Quant Method : Z:\HPCHEM1\BNA G\METHODS\8270-BG092316.M  
 Quant Title : ASP BNA STANDARDS FOR 5 POINT CALIBRATION

TIC Library : C:\DATABASE\NIST11.L  
 TIC Integration Parameters: LSCINT.P

\*\*\*\*\*  
 Peak Number 1 Propane, 2,2-dimethoxy- Concentration Rank 1

R.T.	EstConc	Area	Relative to ISTD	R.T.
2.89	336.46 ng	5236790	1,4-Dichlorobenzene-d4	8.03

Hit#	of	Tentative ID	MW	MolForm	CAS#	Qual
1	5	Propane, 2,2-dimethoxy-	104	C5H12O2	000077-76-9	56
2		1,3-Diaminoguanidine	89	CH7N5	004364-78-7	17
3		1-Propanol, 2-methyl-	74	C4H10O	000078-83-1	9
4		N-Ethylformamide	73	C3H7NO	000627-45-2	9
5		2-Hydroxy-2-methylbutyric acid	118	C5H10O3	003739-30-8	9



Data Path : Z:\HPCHEM1\BNA G\DATA\BG093016\  
 Data File : BG024165.D  
 Acq On : 30 Sep 2016 18:44  
 Operator : UM/SJ  
 Sample : H4998-14  
 Misc :  
 ALS Vial : 8 Sample Multiplier: 1

Instrument :  
 BNA\_G  
 ClientSampleId :  
 SUP-B046-12-13

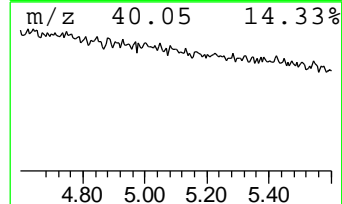
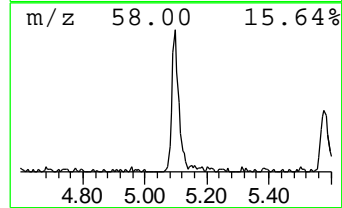
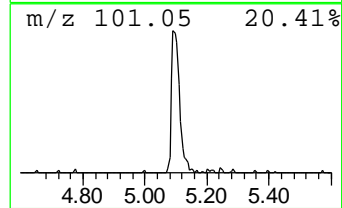
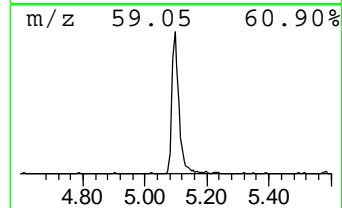
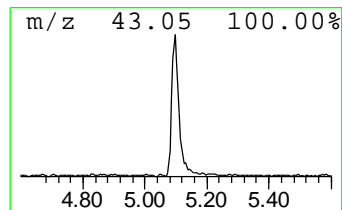
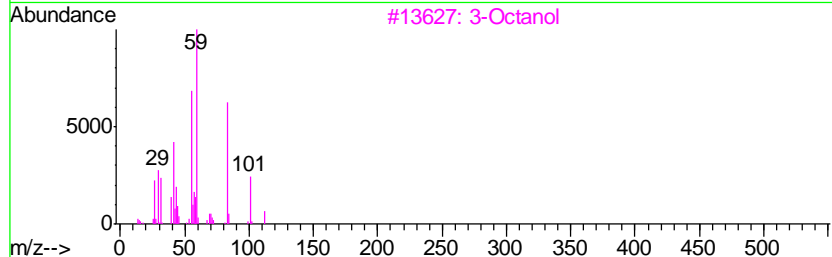
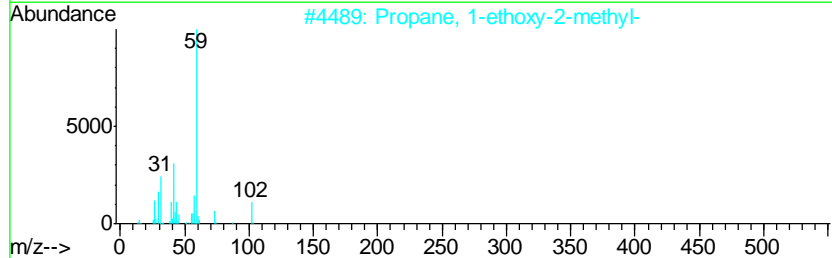
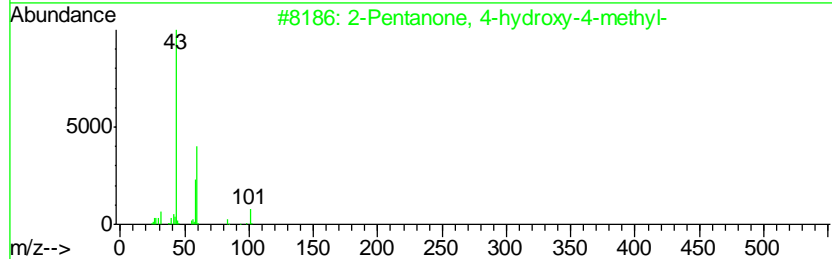
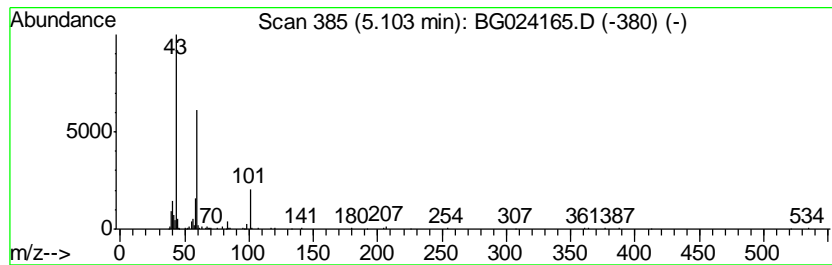
Quant Method : Z:\HPCHEM1\BNA G\METHODS\8270-BG092316.M  
 Quant Title : ASP BNA STANDARDS FOR 5 POINT CALIBRATION

TIC Library : C:\DATABASE\NIST11.L  
 TIC Integration Parameters: LSCINT.P

\*\*\*\*\*  
 Peak Number 2 2-Pentanone, 4-hydroxy-4-me... Concentration Rank 4

R.T.	EstConc	Area	Relative to ISTD	R.T.
5.10	18.83 ng	293052	1,4-Dichlorobenzene-d4	8.03

Hit#	of	Tentative ID	MW	MolForm	CAS#	Qual
1	5	2-Pentanone, 4-hydroxy-4-methyl-	116	C6H12O2	000123-42-2	42
2		Propane, 1-ethoxy-2-methyl-	102	C6H14O	000627-02-1	35
3		3-Octanol	130	C8H18O	000589-98-0	28
4		Acetic acid, 1,1-dimethylethyl e...	116	C6H12O2	000540-88-5	25
5		Methyl 2,5,8,11-tetraoxatridecan...	236	C10H20O6	1000366-78-2	25



Data Path : Z:\HPCHEM1\BNA G\DATA\BG093016\  
 Data File : BG024165.D  
 Acq On : 30 Sep 2016 18:44  
 Operator : UM/SJ  
 Sample : H4998-14  
 Misc :  
 ALS Vial : 8 Sample Multiplier: 1

Instrument :  
 BNA\_G  
 ClientSampleId :  
 SUP-B046-12-13

Quant Method : Z:\HPCHEM1\BNA G\METHODS\8270-BG092316.M  
 Quant Title : ASP BNA STANDARDS FOR 5 POINT CALIBRATION

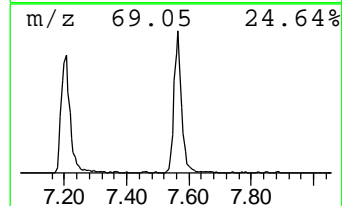
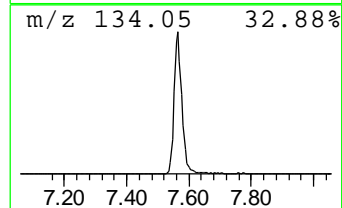
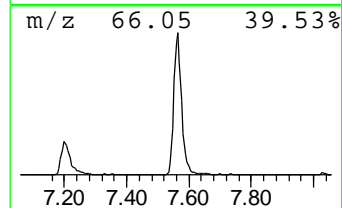
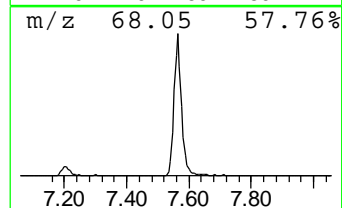
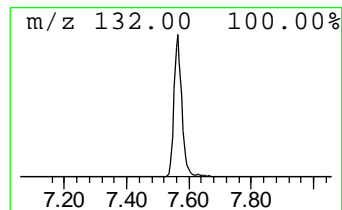
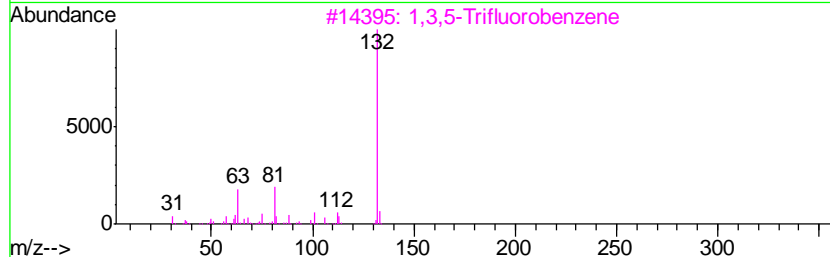
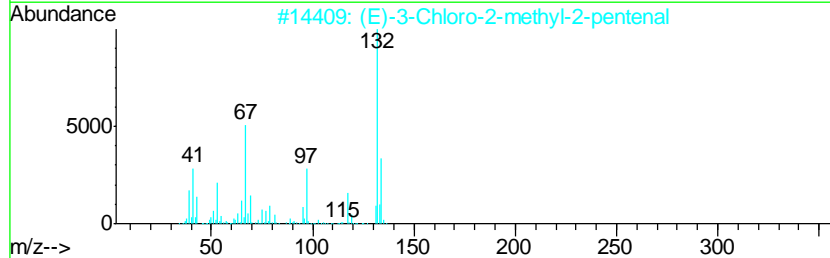
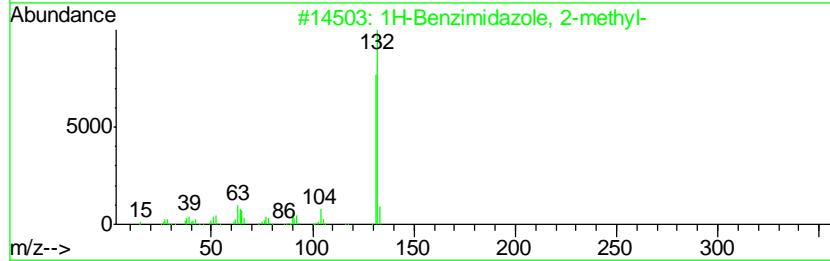
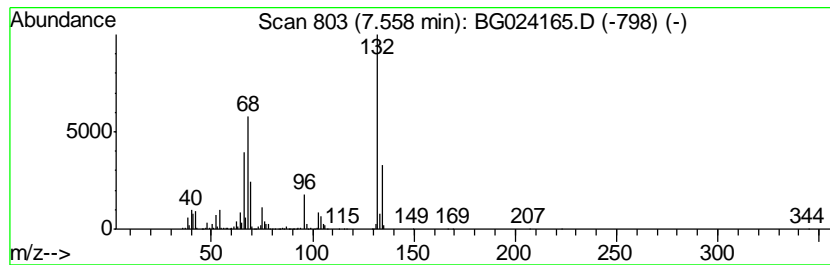
TIC Library : C:\DATABASE\NIST11.L  
 TIC Integration Parameters: LSCINT.P

\*\*\*\*\*  
 Peak Number 3 unknown7.56 Concentration Rank 2

R.T.	EstConc	Area	Relative to ISTD	R.T.
7.56	95.40 ng	1484880	1,4-Dichlorobenzene-d4	8.03

Hit#	of	Tentative ID	MW	MolForm	CAS#	Qual
1	5	1H-Benzimidazole, 2-methyl-	132	C8H8N2	000615-15-6	10
2		(E)-3-Chloro-2-methyl-2-pentenal	132	C6H9ClO	031357-76-3	9
3		1,3,5-Trifluorobenzene	132	C6H3F3	000372-38-3	9
4		1H-Tetrazaborole, 5-chloro-4,5-d...	132	C2H6BClN4	021960-49-6	9
5		4-Chloro-6-fluoro-pyrimidine	132	C4H2ClFN2	051422-01-6	9



Data Path : Z:\HPCHEM1\BNA\_G\DATA\BG093016\  
Data File : BG024165.D  
Acq On : 30 Sep 2016 18:44  
Operator : UM/SJ  
Sample : H4998-14  
Misc :  
ALS Vial : 8 Sample Multiplier: 1

Instrument :  
BNA\_G  
ClientSampleId :  
SUP-B046-12-13

Quant Method : Z:\HPCHEM1\BNA\_G\METHODS\8270-BG092316.M  
Quant Title : ASP BNA STANDARDS FOR 5 POINT CALIBRATION

TIC Library : C:\DATABASE\NIST11.L  
TIC Integration Parameters: LSCINT.P

TIC Top Hit name	RT	EstConc	Units	Response	--Internal Standard--			
					#	RT	Resp	Conc
Propane, 2,2-dime...	2.89	336.5	ng	5236790	1	8.03	311285	20.0
2-Pentanone, 4-hy...	5.10	18.8	ng	293052	1	8.03	311285	20.0
unknown7.56	7.56	95.4	ng	1484880	1	8.03	311285	20.0