

Data Path : Z:\HPCHEM1\BNA\_G\DATA\BG100215\  
 Data File : BG018990.D  
 Acq On : 1 Oct 2015 22:03  
 Operator : UM/NP  
 Sample : G3865-18  
 Misc :  
 ALS Vial : 9 Sample Multiplier: 1

**Instrument :**  
 BNA\_G  
**ClientSampled :**  
 E5MZ4

**Manual Integrations**  
**APPROVED**  
 MMDadoda  
 10/2/2015 5:44:18 PM

Quant Time: Oct 02 12:53:47 2015  
 Quant Method : Z:\HPCHEM1\BNA\_G\METHODS\SOM02.2-EPA-BG091015.M  
 Quant Title : SVOA CALIBRATION  
 QLast Update : Fri Oct 02 11:51:49 2015  
 Response via : Initial Calibration

Internal Standards	R.T.	QIon	Response	Conc	Units	Dev(Min)
1) 1,4-Dichlorobenzene-d4	7.98	152	49952	20.00	ng/ul	0.00
18) Naphthalene-d8	10.78	136	240649	20.00	ng/ul	0.00
36) Acenaphthene-d10	14.60	164	157937	20.00	ng/ul	0.00
62) Phenanthrene-d10	17.35	188	411409	20.00	ng/ul	0.00
78) Chrysene-d12	21.60	240	493325	20.00	ng/ul	0.00
86) Perylene-d12	24.77	264	496882	20.00	ng/ul	-0.01

System Monitoring Compounds

3) 1,4-Dioxane-d8	3.40	96	2167	2.09	ng/uL	0.00
5) Phenol-d5	7.24	99	20296m	4.95	ng/ul	0.06
7) Bis-(2-Chloroethyl)ether-d	7.32	67	18797	7.91	ng/ul	0.01
9) 2-Chlorophenol-d4	7.53	132	33834m	10.89	ng/ul	0.00
13) 4-Methylphenol-d8	8.76	113	27635m	8.30	ng/ul	0.04
19) Nitrobenzene-d5	9.16	128	18710	10.26	ng/ul	0.02
22) 2-Nitrophenol-d4	9.88	143	20047m	10.93	ng/ul	0.00
26) 2,4-Dichlorophenol-d3	10.46	165	36125m	9.36	ng/ul	0.03
29) 4-Chloroaniline-d4	10.97	131	50684m	11.28	ng/ul	0.03
44) Dimethylphthalate-d6	14.00	166	151587m	11.93	ng/ul	0.00
47) Acenaphthylene-d8	14.30	160	187437	12.44	ng/ul	0.00
52) 4-Nitrophenol-d4	14.96	143	14589m	5.98	ng/ul	0.07
58) Fluorene-d10	15.60	176	145835	13.12	ng/ul	0.00
63) 4,6-Dinitro-2-methylphenol	15.74	200	9222m	4.74	ng/ul	0.01
71) Anthracene-d10	17.45	188	235299	12.99	ng/ul	0.00
79) Pyrene-d10	19.73	212	277358	12.22	ng/ul	0.00
90) Benzo(a)pyrene-d12	24.56	264	292545	12.10	ng/ul	-0.01

Target Compounds

					Qvalue
45) Dimethylphthalate	14.06	163	81467	6.61	ng/ul 99

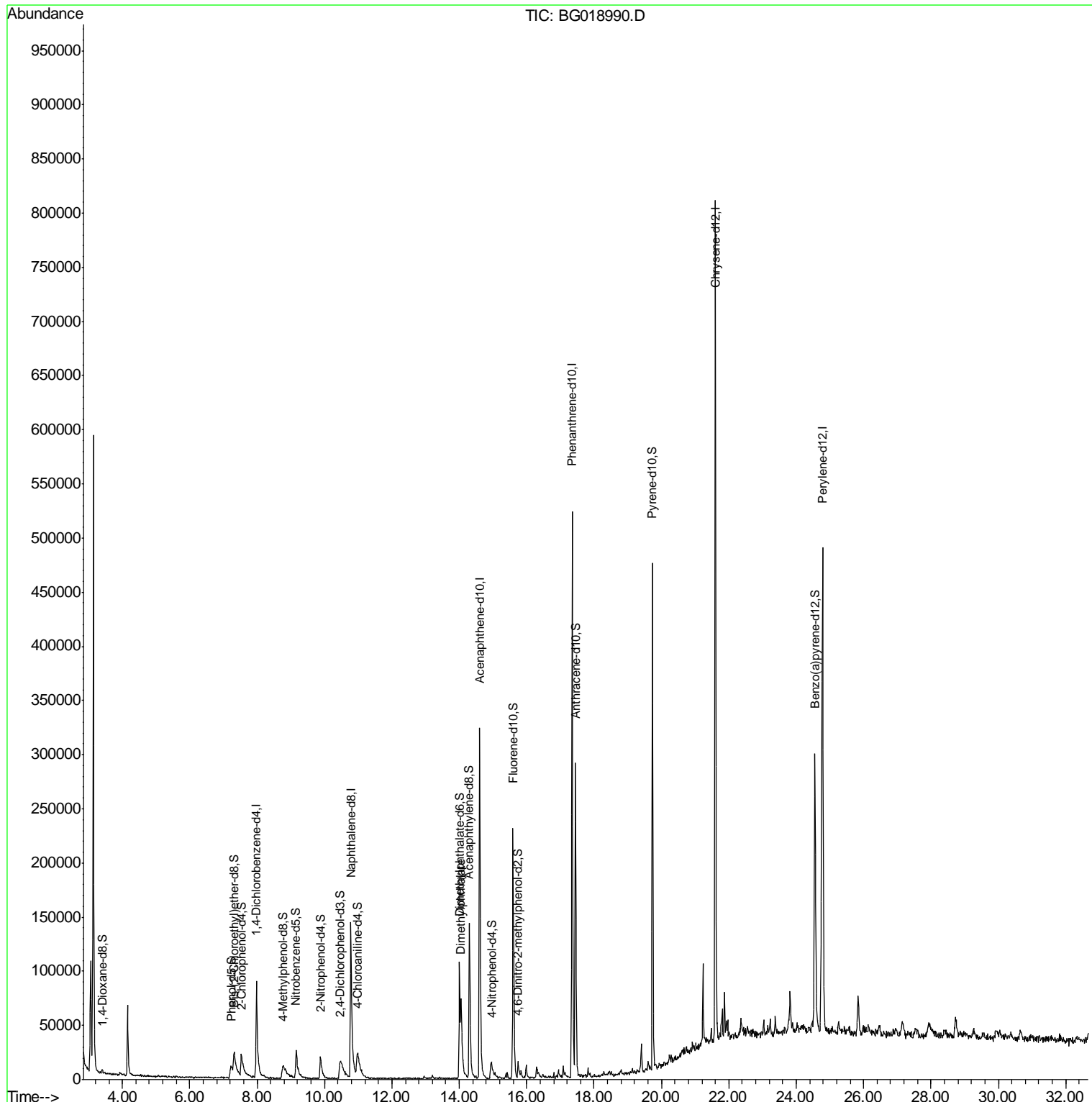
(#) = qualifier out of range (m) = manual integration (+) = signals summed

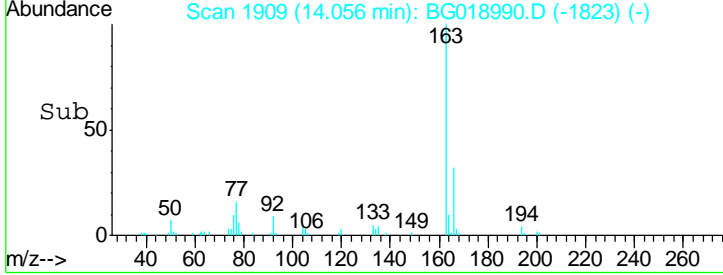
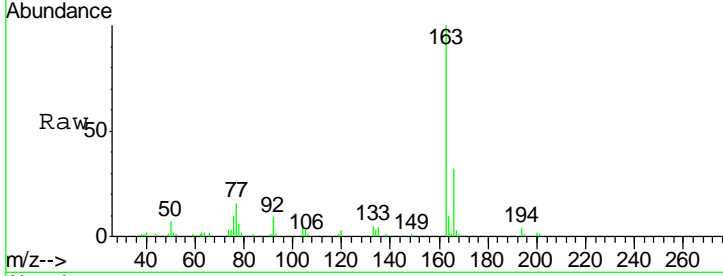
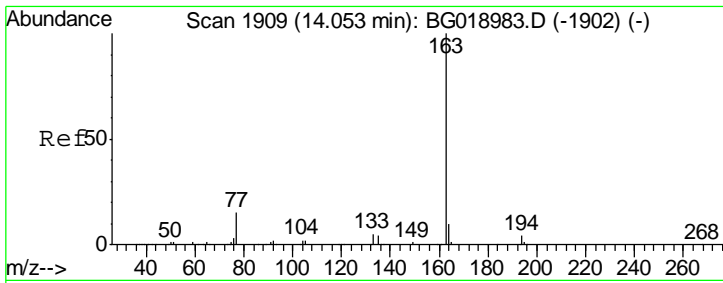
Data Path : Z:\HPCHEM1\BNA\_G\DATA\BG100215\  
 Data File : BG018990.D  
 Acq On : 1 Oct 2015 22:03  
 Operator : UM/NP  
 Sample : G3865-18  
 Misc :  
 ALS Vial : 9 Sample Multiplier: 1

Instrument :  
 BNA\_G  
 Client Sampled :  
 E5MZ4

Manual Integrations  
 APPROVED  
 MMDadoda  
 10/2/2015 5:44:18 PM

Quant Time: Oct 02 12:53:47 2015  
 Quant Method : Z:\HPCHEM1\BNA\_G\METHODS\SOM02.2-EPA-BG091015.M  
 Quant Title : SVOA CALIBRATION  
 QLast Update : Fri Oct 02 11:51:49 2015  
 Response via : Initial Calibration





#45  
 Dimethylphthalate  
 Concen: 6.61 ng/ul  
 RT: 14.06 min Scan# 1909  
 Delta R.T. 0.00 min  
 Lab File: BG018990.D  
 Acq: 1 Oct 2015 22:03

Tgt Ion	Resp	Lower	Upper
163	100		
194	4.1	2.9	4.3
164	9.7	7.7	11.5

Instrument :  
 BNA\_G  
 ClientSampled :  
 E5MZ4

Manual Integrations  
**APPROVED**  
 MMDadoda  
 10/2/2015 5:44:18 PM

