

Data Path : Z:\svoasrv\HPCHEM1\BNA_G\Data\BG100220\
 Data File : BG046778.D
 Acq On : 3 Oct 2020 19:11
 Operator : CG/JU
 Sample : L4150-19
 Misc :
 ALS Vial : 46 Sample Multiplier: 1

Instrument :
 BNA_G
 ClientSampled :
 CB7M0

Integration Parameters: LSCINT.P

Integrator: RTE
 Smoothing : OFF Filtering: 5
 Sampling : 1 Min Area: 0.1 % of largest Peak
 Start Thrs: 0.2 Max Peaks: 100
 Stop Thrs : 0 Peak Location: TOP

If leading or trailing edge < 100 prefer < Baseline drop else tangent >
 Peak separation: 5

Method : Z:\SVOASRV\HPCHEM1\BNA_G\METHODS\SOM-EPA-BG092920MA.M
 Title : SVOA CALIBRATION

Signal : TIC: BG046778.D

peak #	R.T. min	first scan	max scan	last scan	PK TY	peak height	corr. area	corr. % max.	% of total
1	3.528	28	32	38	rBV3	21632	34311	1.29%	0.115%
2	3.752	69	70	77	rBV4	3064	5182	0.19%	0.017%
3	3.840	83	85	89	rVB4	2378	2991	0.11%	0.010%
4	4.128	131	134	138	rVB4	2685	3762	0.14%	0.013%
5	4.286	159	161	164	rVB2	5018	5348	0.20%	0.018%
6	5.943	437	443	445	rBV5	1544	3026	0.11%	0.010%
7	6.543	540	545	547	rBV3	2279	2728	0.10%	0.009%
8	6.877	599	602	606	rBV3	2185	3092	0.12%	0.010%
9	7.253	659	666	676	rBV	429704	729973	27.46%	2.436%
10	7.430	687	696	707	rVB	288652	484573	18.23%	1.617%
11	7.641	725	732	739	rBV	403029	697466	26.23%	2.328%
12	8.111	803	812	819	rVB	297267	487404	18.33%	1.627%
13	8.170	819	822	825	rBV3	2650	2872	0.11%	0.010%
14	8.499	875	878	881	rVB3	2724	3199	0.12%	0.011%
15	8.805	921	930	937	rBV	508226	876741	32.98%	2.926%
16	9.269	1000	1009	1017	rBV	400140	695807	26.17%	2.322%
17	9.997	1125	1133	1141	rBV	343963	624626	23.49%	2.085%
18	10.532	1216	1224	1232	rBV	542398	963561	36.24%	3.216%
19	10.920	1283	1290	1299	rVB	398730	713220	26.83%	2.380%
20	11.049	1304	1312	1321	rVV	424568	791544	29.77%	2.642%
21	11.125	1321	1325	1326	rVB3	2294	2711	0.10%	0.009%
22	11.443	1376	1379	1384	rVB4	2545	3480	0.13%	0.012%
23	12.494	1553	1558	1563	rBV2	10481	16988	0.64%	0.057%
24	12.788	1603	1608	1609	rVB4	2389	2745	0.10%	0.009%
25	13.088	1657	1659	1664	rVB2	2732	4312	0.16%	0.014%
26	13.335	1697	1701	1705	rVB4	2080	3265	0.12%	0.011%
27	13.546	1734	1737	1740	rBV3	2444	3058	0.12%	0.010%
28	13.705	1760	1764	1766	rBV4	1852	2757	0.10%	0.009%
29	14.134	1830	1837	1842	rBV	959528	1362718	51.25%	4.548%
30	14.175	1842	1844	1853	rVB	38637	57204	2.15%	0.191%
31	14.269	1855	1860	1862	rVB2	2825	3214	0.12%	0.011%
32	14.427	1880	1887	1896	rVB	1063491	1691401	63.62%	5.645%
33	14.504	1899	1900	1904	rBV3	2512	2666	0.10%	0.009%
34	14.621	1918	1920	1926	rBV5	3247	4982	0.19%	0.017%
35	14.733	1932	1939	1947	rBV2	679436	1075992	40.47%	3.591%
36	14.903	1961	1968	1976	rBV	506645	804457	30.26%	2.685%

Data Path : Z:\svoasrv\HPCHEM1\BNA_G\Data\BG100220\
 Data File : BG046778.D
 Acq On : 3 Oct 2020 19:11
 Operator : CG/JU
 Sample : L4150-19
 Misc :
 ALS Vial : 46 Sample Multiplier: 1

Instrument :
 BNA_G
 ClientSampleId :
 CB7M0

Integration Parameters: LSCINT.P

Integrator: RTE
 Smoothing : OFF
 Sampling : 1
 Start Thrs: 0.2
 Stop Thrs : 0

Filtering: 5
 Min Area: 0.1 % of largest Peak
 Max Peaks: 100
 Peak Location: TOP

If leading or trailing edge < 100 prefer < Baseline drop else tangent >
 Peak separation: 5

Method : Z:\SVOASRV\HPCHEM1\BNA_G\METHODS\SOM-EPA-BG092920MA.M
 Title : SVOA CALIBRATION

37	15.526	2070	2074	2077	rBV4	4619	7133	0.27%	0.024%
38	15.720	2101	2107	2116	rBV	1331723	2081377	78.28%	6.947%
39	15.826	2119	2125	2132	rBV	397973	579611	21.80%	1.934%
40	15.961	2144	2148	2155	rVB3	19901	33126	1.25%	0.111%
41	16.026	2155	2159	2162	rBV4	3700	4363	0.16%	0.015%
42	16.355	2213	2215	2218	rVB2	2422	2841	0.11%	0.009%
43	16.390	2218	2221	2223	rBV2	3569	4952	0.19%	0.017%
44	16.501	2237	2240	2244	rBV6	5344	9132	0.34%	0.030%
45	16.654	2264	2266	2269	rVB4	3117	3340	0.13%	0.011%
46	17.007	2324	2326	2328	rBV3	2982	2791	0.10%	0.009%
47	17.154	2347	2351	2352	rBV2	5289	5074	0.19%	0.017%
48	17.218	2360	2362	2365	rBV4	2388	3347	0.13%	0.011%
49	17.259	2365	2369	2373	rVB3	5771	7975	0.30%	0.027%
50	17.377	2385	2389	2390	rBV2	2416	3466	0.13%	0.012%
51	17.477	2398	2406	2415	rVB	877593	1343988	50.55%	4.486%
52	17.577	2415	2423	2431	rBV	1496109	2230442	83.89%	7.444%
53	17.641	2431	2434	2437	rBV3	4398	4096	0.15%	0.014%
54	17.706	2439	2445	2447	rBV5	12819	18438	0.69%	0.062%
55	17.835	2463	2467	2468	rBV3	4962	5395	0.20%	0.018%
56	17.847	2468	2469	2472	rVB3	4078	3064	0.12%	0.010%
57	18.047	2501	2503	2506	rVB4	3454	3535	0.13%	0.012%
58	18.070	2506	2507	2509	rBV2	4388	3388	0.13%	0.011%
59	18.211	2530	2531	2535	rVB4	3197	3336	0.13%	0.011%
60	18.293	2543	2545	2546	rBV2	3213	3247	0.12%	0.011%
61	18.352	2550	2555	2561	rBV7	18435	33897	1.27%	0.113%
62	18.429	2566	2568	2574	rVB6	6750	11735	0.44%	0.039%
63	18.693	2611	2613	2617	rVV5	4489	3597	0.14%	0.012%
64	18.769	2624	2626	2628	rBV3	3784	2682	0.10%	0.009%
65	18.834	2634	2637	2638	rBV3	2855	2878	0.11%	0.010%
66	18.946	2653	2656	2657	rBV3	6833	6197	0.23%	0.021%
67	18.963	2657	2659	2660	rBV	10096	7014	0.26%	0.023%
68	18.999	2660	2665	2666	rBV5	9703	16309	0.61%	0.054%
69	19.022	2666	2669	2670	rBV3	13492	14141	0.53%	0.047%
70	19.063	2675	2676	2677	rBV	10642	5039	0.19%	0.017%
71	19.145	2687	2690	2696	rVB8	23043	46402	1.75%	0.155%
72	19.492	2742	2749	2752	rBV2	20014	34522	1.30%	0.115%
73	19.521	2752	2754	2756	rVB3	5699	4541	0.17%	0.015%
74	19.610	2767	2769	2770	rBV2	7041	4596	0.17%	0.015%
75	19.745	2787	2792	2796	rBV	21572	35457	1.33%	0.118%
76	19.856	2804	2811	2818	rVB	1907752	2658720	100.00%	8.873%

Data Path : Z:\svoasrv\HPCHEM1\BNA_G\Data\BG100220\
 Data File : BG046778.D
 Acq On : 3 Oct 2020 19:11
 Operator : CG/JU
 Sample : L4150-19
 Misc :
 ALS Vial : 46 Sample Multiplier: 1

Instrument :
 BNA_G
 ClientSampleId :
 CB7M0

Integration Parameters: LSCINT.P

Integrator: RTE
 Smoothing : OFF Filtering: 5
 Sampling : 1 Min Area: 0.1 % of largest Peak
 Start Thrs: 0.2 Max Peaks: 100
 Stop Thrs : 0 Peak Location: TOP

If leading or trailing edge < 100 prefer < Baseline drop else tangent >
 Peak separation: 5

Method : Z:\SVOASRV\HPCHEM1\BNA_G\METHODS\SOM-EPA-BG092920MA.M
 Title : SVOA CALIBRATION

77	20.262	2878	2880	2881	rBV2	6526	5025	0.19%	0.017%
78	20.667	2947	2949	2950	rBV2	7981	6505	0.24%	0.022%
79	20.755	2962	2964	2967	rBV4	10460	14110	0.53%	0.047%
80	21.390	3067	3072	3079	rBV2	152560	264982	9.97%	0.884%
81	21.748	3126	3133	3141	rVB2	903457	1515588	57.00%	5.058%
82	22.348	3233	3235	3238	rBV4	10063	9469	0.36%	0.032%
83	22.583	3254	3275	3298	rVB9	390371	2556393	96.15%	8.532%
84	24.104	3532	3534	3535	rBV2	17046	15656	0.59%	0.052%
85	24.798	3641	3652	3662	rBV	941995	2579144	97.01%	8.608%
86	25.027	3680	3691	3701	rBV2	518448	1486465	55.91%	4.961%
87	26.261	3895	3901	3905	rBV7	26715	58599	2.20%	0.196%
88	27.013	4027	4029	4030	rBV2	9378	6128	0.23%	0.020%
89	29.339	4423	4425	4426	rBV2	10741	6937	0.26%	0.023%
90	32.224	4914	4916	4921	rBV6	9357	9204	0.35%	0.031%

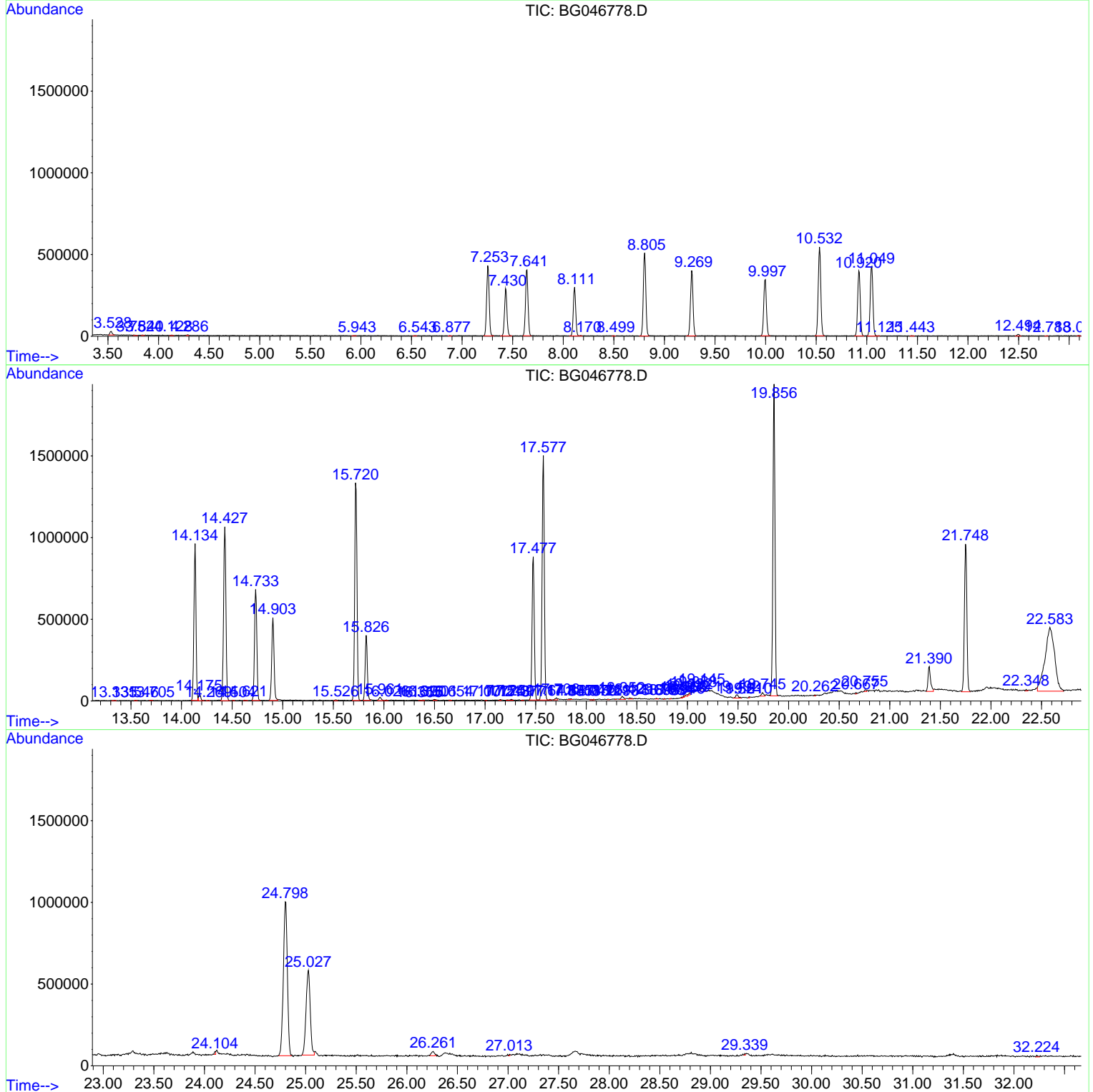
Sum of corrected areas: 29962765

Data Path : Z:\svoasrv\HPCHEM1\BNA_G\Data\BG100220\
 Data File : BG046778.D
 Acq On : 3 Oct 2020 19:11
 Operator : CG/JU
 Sample : L4150-19
 Misc :
 ALS Vial : 46 Sample Multiplier: 1

Instrument :
 BNA_G
ClientSampleId :
 CB7M0

Quant Method : Z:\SVOASRV\HPCHEM1\BNA_G\METHODS\SOM-EPA-BG092920MA.M
 Quant Title : SVOA CALIBRATION

TIC Library : C:\DATABASE\NIST11.L
 TIC Integration Parameters: LSCINT.P



Data Path : Z:\svoasrv\HPCHEM1\BNA_G\Data\BG100220\
 Data File : BG046778.D
 Acq On : 3 Oct 2020 19:11
 Operator : CG/JU
 Sample : L4150-19
 Misc :
 ALS Vial : 46 Sample Multiplier: 1

Instrument :
 BNA_G
 ClientSampleId :
 CB7M0

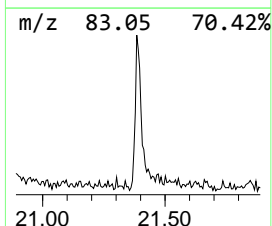
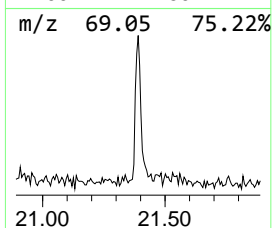
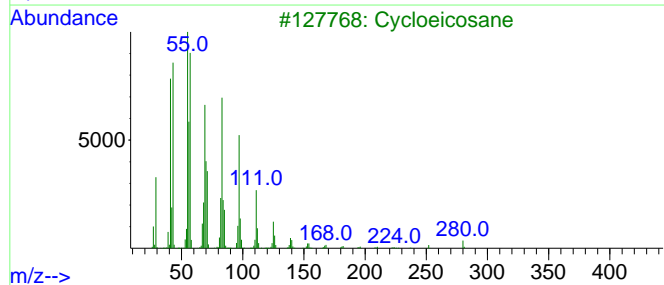
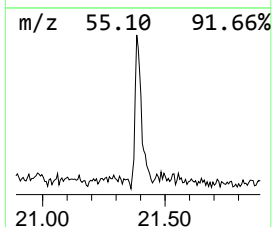
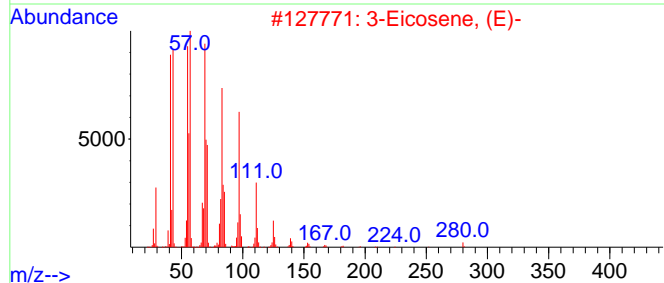
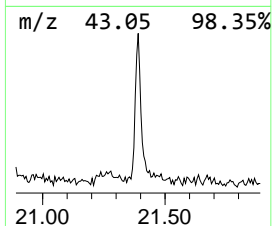
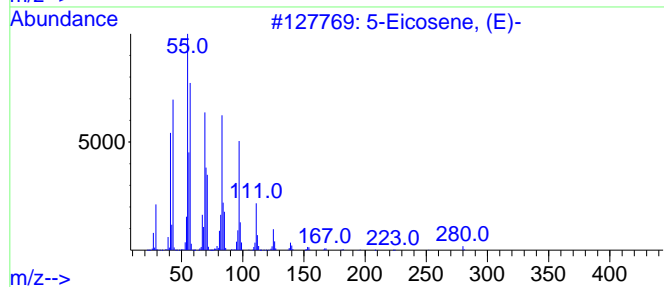
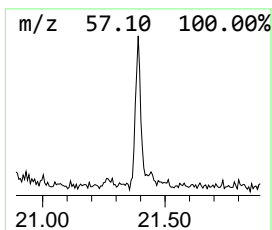
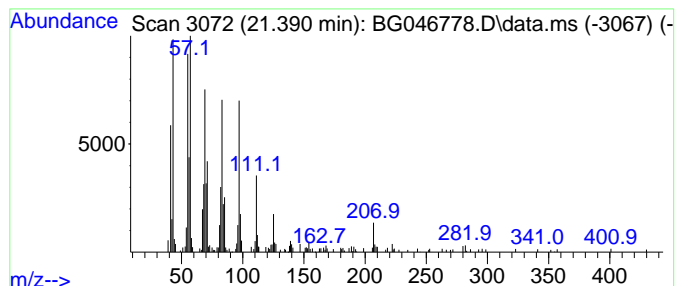
Quant Method : Z:\SVOASRV\HPCHEM1\BNA_G\METHODS\SOM-EPA-BG092920MA.M
 Quant Title : SVOA CALIBRATION

TIC Library : C:\DATABASE\NIST11.L
 TIC Integration Parameters: LSCINT.P

 Peak Number 1 (DEL) Alkane: Straight-Chai... Concentration Rank 2

R.T.	EstConc	Area	Relative to ISTD	R.T.
21.390	3.50 ng/ul	264982	Chrysene-d12	21.748

Hit#	of 5	Tentative ID	MW	MolForm	CAS#	Qual
1		5-Eicosene, (E)-	280	C20H40	074685-30-6	96
2		3-Eicosene, (E)-	280	C20H40	074685-33-9	95
3		Cycloeicosane	280	C20H40	000296-56-0	95
4		Trifluoroacetic acid, pentadecyl...	324	C17H31F3O2	959010-23-2	93
5		n-Tetracosanol-1	354	C24H50O	000506-51-4	91



Data Path : Z:\svoasrv\HPCHEM1\BNA_G\Data\BG100220\
 Data File : BG046778.D
 Acq On : 3 Oct 2020 19:11
 Operator : CG/JU
 Sample : L4150-19
 Misc :
 ALS Vial : 46 Sample Multiplier: 1

Instrument :
 BNA_G
 ClientSampled :
 CB7M0

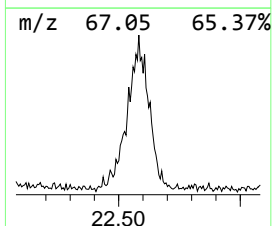
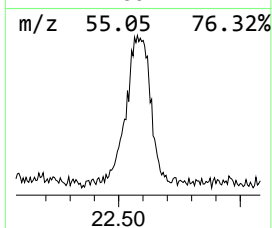
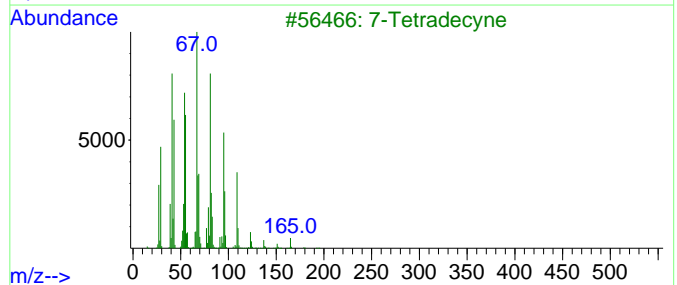
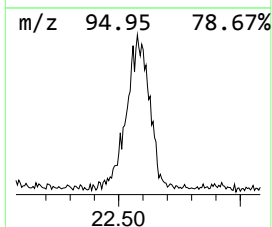
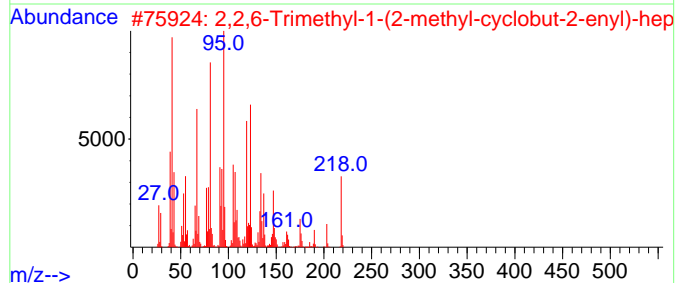
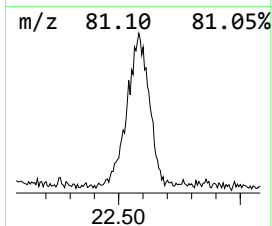
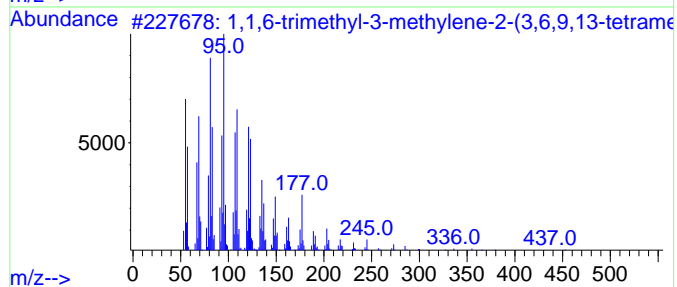
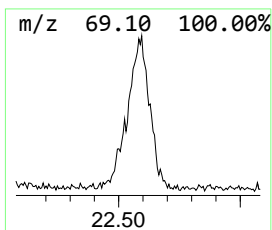
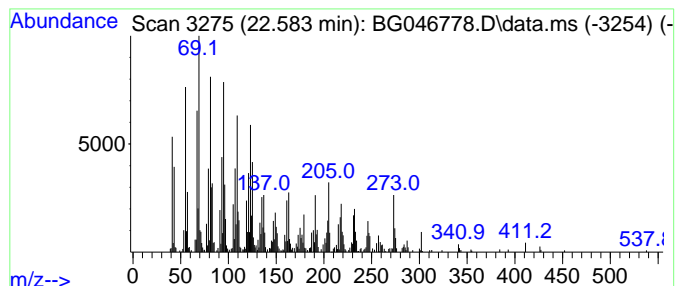
Quant Method : Z:\SVOASRV\HPCHEM1\BNA_G\METHODS\SOM-EPA-BG092920MA.M
 Quant Title : SVOA CALIBRATION

TIC Library : C:\DATABASE\NIST11.L
 TIC Integration Parameters: LSCINT.P

 Peak Number 2 1,1,6-trimethyl-3-methylene... Concentration Rank 1

R.T.	EstConc	Area	Relative to ISTD	R.T.
22.580	33.73 ng/ul	2556390	Chrysene-d12	21.748

Hit#	of	5	Tentative ID	MW	MolForm	CAS#	Qual
1	1,1,6-trimethyl-3-methylene-2-(3...	452	C33H56	1000373-94-5	72		
2	2,2,6-Trimethyl-1-(2-methyl-cycl...	218	C15H22O	1000188-72-8	50		
3	7-Tetradecyne	194	C14H26	035216-11-6	46		
4	Caparratriene	206	C15H26	1000374-08-7	45		
5	Cyclopentane, 1-methyl-1-(2-meth...	138	C10H18	074764-47-9	38		



Data Path : Z:\svoasrv\HPCHEM1\BNA_G\Data\BG100220\
Data File : BG046778.D
Acq On : 3 Oct 2020 19:11
Operator : CG/JU
Sample : L4150-19
Misc :
ALS Vial : 46 Sample Multiplier: 1

Instrument :
BNA_G
ClientSampleId :
CB7M0

Quant Method : Z:\SVOASRV\HPCHEM1\BNA_G\METHODS\SOM-EPA-BG092920MA.M
Quant Title : SVOA CALIBRATION

TIC Library : C:\DATABASE\NIST11.L
TIC Integration Parameters: LSCINT.P

TIC Top Hit name	RT	EstConc	Units	Response	--Internal Standard--			
					#	RT	Resp	Conc
(DEL) Alkane: S...	21.390	3.5	ng/u1	264982	5	21.748	1515590	20.0
1,1,6-trimethyl...	22.580	33.7	ng/u1	2556390	5	21.748	1515590	20.0