

Data Path : Z:\HPCHEM1\BNA_G\DATA\BG100716\
 Data File : BG024218.D
 Acq On : 7 Oct 2016 3:29
 Operator : UM/SJ
 Sample : H5082-16
 Misc :
 ALS Vial : 19 Sample Multiplier: 1

Instrument :
 BNA_G
 ClientSampleId :
 BDPJ5

Integration Parameters: LSCINT.P

Integrator: RTE
 Smoothing : OFF
 Sampling : 1
 Start Thrs: 0.2
 Stop Thrs : 0

Filtering: 5
 Min Area: 0.1 % of largest Peak
 Max Peaks: 100
 Peak Location: TOP

If leading or trailing edge < 100 prefer < Baseline drop else tangent >
 Peak separation: 5

Method : Z:\HPCHEM1\BNA_G\METHODS\SOM02.2-EPA-BG0100716.M
 Title : SVOA CALIBRATION

Signal : TIC

peak #	R.T. min	first scan	max scan	last scan	PK TY	peak height	corr. area	corr. % max.	% of total
1	4.218	233	235	236	rBV2	9499	8158	0.18%	0.015%
2	4.840	339	341	343	rBV3	16436	17788	0.39%	0.033%
3	5.316	420	422	424	rBV3	13776	11700	0.26%	0.022%
4	5.716	483	490	493	rBV8	7474	15659	0.35%	0.029%
5	5.792	499	503	505	rBV4	10759	13155	0.29%	0.025%
6	5.822	505	508	513	rVB6	15815	21225	0.47%	0.040%
7	5.963	529	532	533	rBV3	10541	10045	0.22%	0.019%
8	6.004	537	539	542	rVB4	10818	10081	0.22%	0.019%
9	6.162	565	566	569	rBV3	8372	8325	0.18%	0.016%
10	6.309	589	591	594	rVB3	10398	8485	0.19%	0.016%
11	6.585	636	638	640	rBV3	8872	8753	0.19%	0.016%
12	6.809	673	676	679	rBV4	6401	10386	0.23%	0.020%
13	6.956	698	701	704	rVB4	10397	12928	0.29%	0.024%
14	6.985	704	706	708	rBV2	10178	8957	0.20%	0.017%
15	7.003	708	709	713	rBV2	9014	11611	0.26%	0.022%
16	7.185	738	740	745	rVV7	7272	11195	0.25%	0.021%
17	7.261	750	753	754	rBV3	6691	8476	0.19%	0.016%
18	7.426	774	781	791	rBV	687555	1220602	27.09%	2.298%
19	7.531	796	799	802	rBV5	8523	9812	0.22%	0.018%
20	7.614	806	813	822	rVB	501266	857277	19.02%	1.614%
21	7.714	829	830	835	rBV5	10715	10850	0.24%	0.020%
22	7.819	842	848	858	rBV	652547	1176994	26.12%	2.216%
23	8.301	922	930	939	rVV	640279	1116548	24.78%	2.102%
24	8.607	981	982	984	rBV2	13154	9136	0.20%	0.017%
25	8.630	984	986	992	rVB7	10953	13732	0.30%	0.026%
26	8.830	1016	1020	1023	rBV5	12128	11783	0.26%	0.022%
27	8.989	1039	1047	1056	rVB	795034	1437304	31.89%	2.706%
28	9.077	1061	1062	1065	rVB3	9660	9072	0.20%	0.017%
29	9.194	1079	1082	1087	rBV7	7577	9302	0.21%	0.018%
30	9.476	1122	1130	1137	rBV	686540	1270350	28.19%	2.391%
31	9.529	1137	1139	1144	rVB6	16637	27220	0.60%	0.051%
32	10.199	1247	1253	1262	rVB	556109	1024912	22.74%	1.929%
33	10.733	1337	1344	1356	rVB	849346	1590723	35.30%	2.994%
34	11.133	1404	1412	1421	rVB	869637	1629135	36.15%	3.067%

Data Path : Z:\HPCHEM1\BNA_G\DATA\BG100716\
 Data File : BG024218.D
 Acq On : 7 Oct 2016 3:29
 Operator : UM/SJ
 Sample : H5082-16
 Misc :
 ALS Vial : 19 Sample Multiplier: 1

Instrument :
 BNA_G
 ClientSampleId :
 BDPJ5

Integration Parameters: LSCINT.P

Integrator: RTE
 Smoothing : OFF
 Sampling : 1
 Start Thrs: 0.2
 Stop Thrs : 0

Filtering: 5
 Min Area: 0.1 % of largest Peak
 Max Peaks: 100
 Peak Location: TOP

If leading or trailing edge < 100 prefer < Baseline drop else tangent >
 Peak separation: 5

Method : Z:\HPCHEM1\BNA_G\METHODS\SOM02.2-EPA-BG0100716.M
 Title : SVOA CALIBRATION

35	11.256	1425	1433	1442	rBV	397950	728827	16.17%	1.372%
36	11.585	1486	1489	1493	rVB5	8191	12152	0.27%	0.023%
37	11.662	1500	1502	1507	rBV5	6624	10986	0.24%	0.021%
38	11.879	1538	1539	1543	rVB4	8897	9551	0.21%	0.018%
39	12.437	1630	1634	1638	rBV6	8067	11167	0.25%	0.021%
40	12.590	1657	1660	1661	rBV3	8279	10796	0.24%	0.020%
41	12.690	1673	1677	1679	rBV3	19605	33278	0.74%	0.063%
42	12.913	1709	1715	1716	rVB6	10127	13834	0.31%	0.026%
43	12.960	1721	1723	1726	rVV4	10847	12101	0.27%	0.023%
44	12.996	1726	1729	1731	rVB4	8032	8661	0.19%	0.016%
45	13.201	1763	1764	1767	rVB3	9398	8877	0.20%	0.017%
46	13.236	1767	1770	1772	rBV2	10661	10565	0.23%	0.020%
47	13.272	1774	1776	1779	rVB4	13612	12897	0.29%	0.024%
48	13.424	1800	1802	1809	rVB8	8657	11906	0.26%	0.022%
49	13.513	1814	1817	1821	rVV6	17844	25299	0.56%	0.048%
50	13.583	1827	1829	1832	rVV4	10851	9331	0.21%	0.018%
51	13.783	1860	1863	1871	rVB5	31381	55120	1.22%	0.104%
52	13.853	1874	1875	1881	rVB5	5984	8671	0.19%	0.016%
53	14.118	1915	1920	1923	rVB6	12912	20119	0.45%	0.038%
54	14.253	1940	1943	1945	rBV4	9503	11768	0.26%	0.022%
55	14.312	1946	1953	1957	rVV	1438876	2208045	49.00%	4.156%
56	14.359	1957	1961	1967	rVB	1210928	1764518	39.16%	3.322%
57	14.482	1980	1982	1984	rVB3	9583	8312	0.18%	0.016%
58	14.535	1986	1991	1993	rVV5	15269	15647	0.35%	0.029%
59	14.558	1993	1995	1998	rVV4	7959	8223	0.18%	0.015%
60	14.611	1998	2004	2012	rVB	1723193	2842983	63.09%	5.352%
61	14.770	2028	2031	2036	rVB5	27684	41183	0.91%	0.078%
62	14.870	2045	2048	2049	rBV3	7434	9943	0.22%	0.019%
63	14.917	2049	2056	2063	rVB	1528872	2504314	55.57%	4.714%
64	15.075	2076	2083	2091	rBV	622900	1015111	22.53%	1.911%
65	15.399	2132	2138	2141	rBV7	11348	19573	0.43%	0.037%
66	15.451	2145	2147	2149	rBV3	13596	10574	0.23%	0.020%
67	15.487	2152	2153	2156	rBV3	11206	11491	0.25%	0.022%
68	15.687	2182	2187	2188	rBV5	21992	30501	0.68%	0.057%
69	15.722	2188	2193	2199	rVB4	65913	95617	2.12%	0.180%
70	15.904	2216	2224	2230	rBV	2300296	3810095	84.55%	7.172%
71	15.998	2234	2240	2249	rVV	534834	839994	18.64%	1.581%

Data Path : Z:\HPCHEM1\BNA_G\DATA\BG100716\
 Data File : BG024218.D
 Acq On : 7 Oct 2016 3:29
 Operator : UM/SJ
 Sample : H5082-16
 Misc :
 ALS Vial : 19 Sample Multiplier: 1

Instrument :
 BNA_G
 ClientSampleId :
 BDPJ5

Integration Parameters: LSCINT.P

Integrator: RTE
 Smoothing : OFF
 Sampling : 1
 Start Thrs: 0.2
 Stop Thrs : 0

Filtering: 5
 Min Area: 0.1 % of largest Peak
 Max Peaks: 100
 Peak Location: TOP

If leading or trailing edge < 100 prefer < Baseline drop else tangent >
 Peak separation: 5

Method : Z:\HPCHEM1\BNA_G\METHODS\SOM02.2-EPA-BG0100716.M
 Title : SVOA CALIBRATION

72	16.133	2255	2263	2269	rBV9	44846	110329	2.45%	0.208%
73	16.280	2283	2288	2290	rBV6	16492	25827	0.57%	0.049%
74	16.339	2295	2298	2302	rBV6	18237	27444	0.61%	0.052%
75	16.580	2335	2339	2342	rBV3	81460	116462	2.58%	0.219%
76	16.715	2360	2362	2364	rBV3	9248	9813	0.22%	0.018%
77	16.768	2369	2371	2375	rBV5	14211	18276	0.41%	0.034%
78	17.085	2421	2425	2427	rBV5	20417	26182	0.58%	0.049%
79	17.255	2450	2454	2455	rBV4	15970	17135	0.38%	0.032%
80	17.373	2471	2474	2478	rVB	80178	98730	2.19%	0.186%
81	17.426	2481	2483	2487	rVB5	32142	39160	0.87%	0.074%
82	17.584	2508	2510	2512	rVB3	14267	8636	0.19%	0.016%
83	17.655	2515	2522	2531	rVV	1975012	3091507	68.60%	5.819%
84	17.755	2533	2539	2550	rVB2	2606346	4054039	89.96%	7.631%
85	17.902	2560	2564	2567	rBV5	33123	53030	1.18%	0.100%
86	17.943	2567	2571	2575	rBV2	55491	78555	1.74%	0.148%
87	18.107	2597	2599	2605	rVB4	48615	60875	1.35%	0.115%
88	18.377	2643	2645	2647	rBV3	13887	13788	0.31%	0.026%
89	18.501	2662	2666	2673	rBV5	109066	163435	3.63%	0.308%
90	19.200	2782	2785	2788	rVV4	32638	39566	0.88%	0.074%
91	19.241	2789	2792	2798	rVB3	79468	106978	2.37%	0.201%
92	19.758	2877	2880	2886	rBV7	68202	113525	2.52%	0.214%
93	20.023	2919	2925	2932	rBV	3083446	4506363	100.00%	8.483%
94	20.311	2970	2974	2976	rBV	386363	425389	9.44%	0.801%
95	20.346	2976	2980	2984	rVB	879519	939699	20.85%	1.769%
96	21.356	3149	3152	3156	rVB	269790	328110	7.28%	0.618%
97	21.544	3181	3184	3188	rVB4	214503	285697	6.34%	0.538%
98	21.956	3248	3254	3260	rVB	1848247	3294512	73.11%	6.202%
99	25.175	3794	3802	3815	rVB2	1376392	3961549	87.91%	7.457%
100	25.410	3836	3842	3856	rVB3	1041023	3225605	71.58%	6.072%

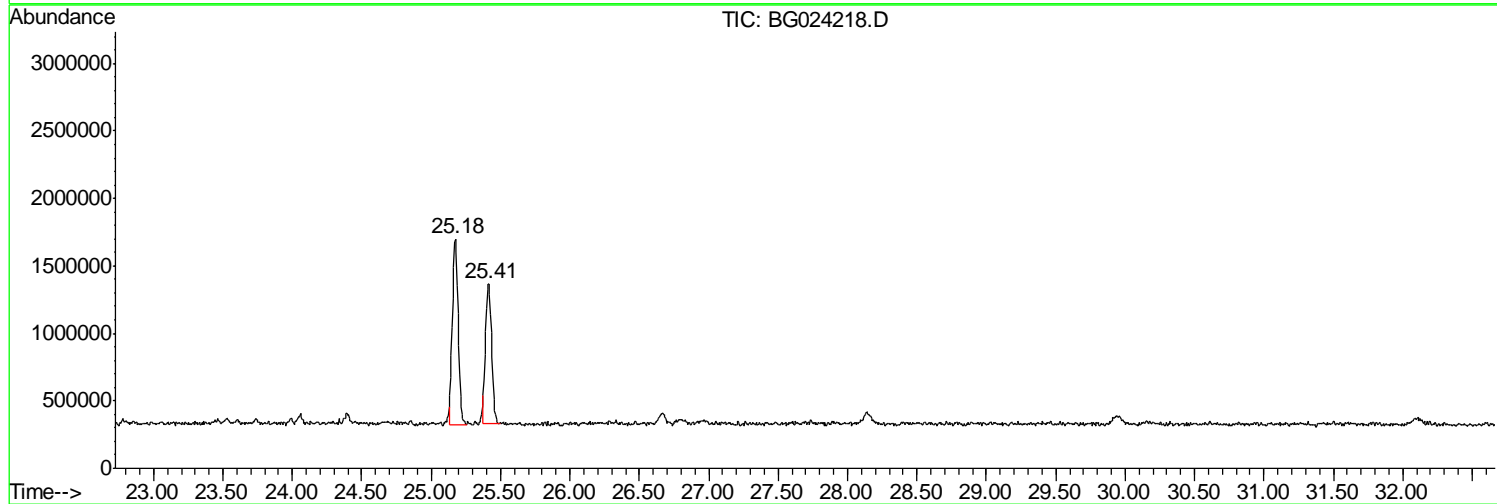
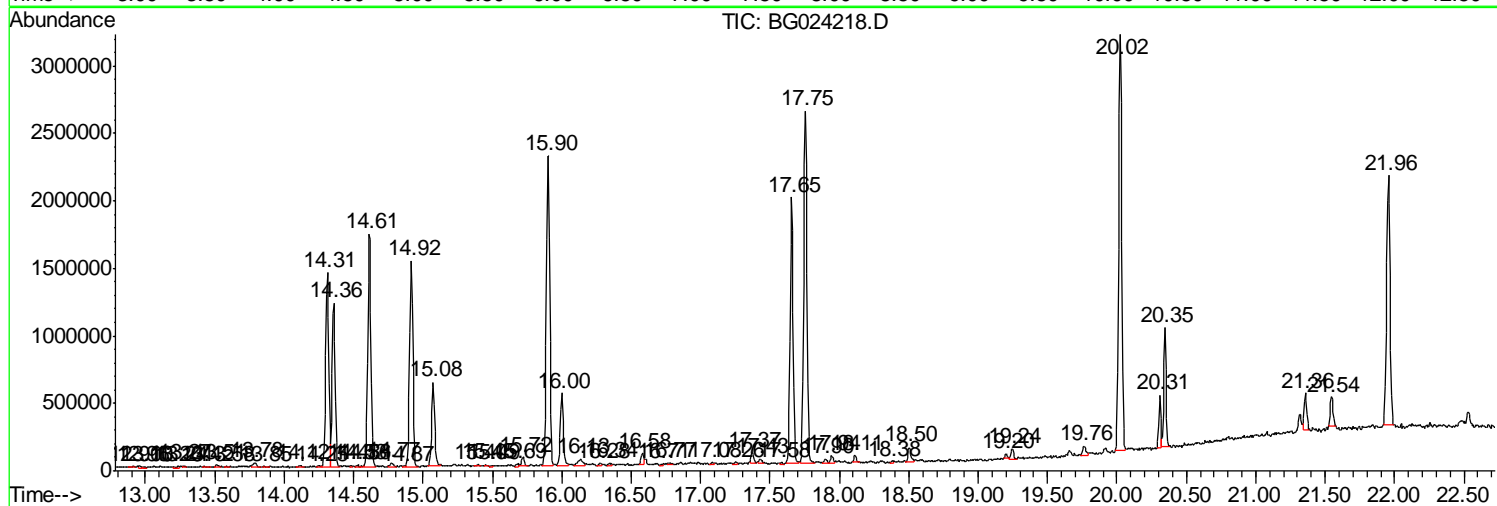
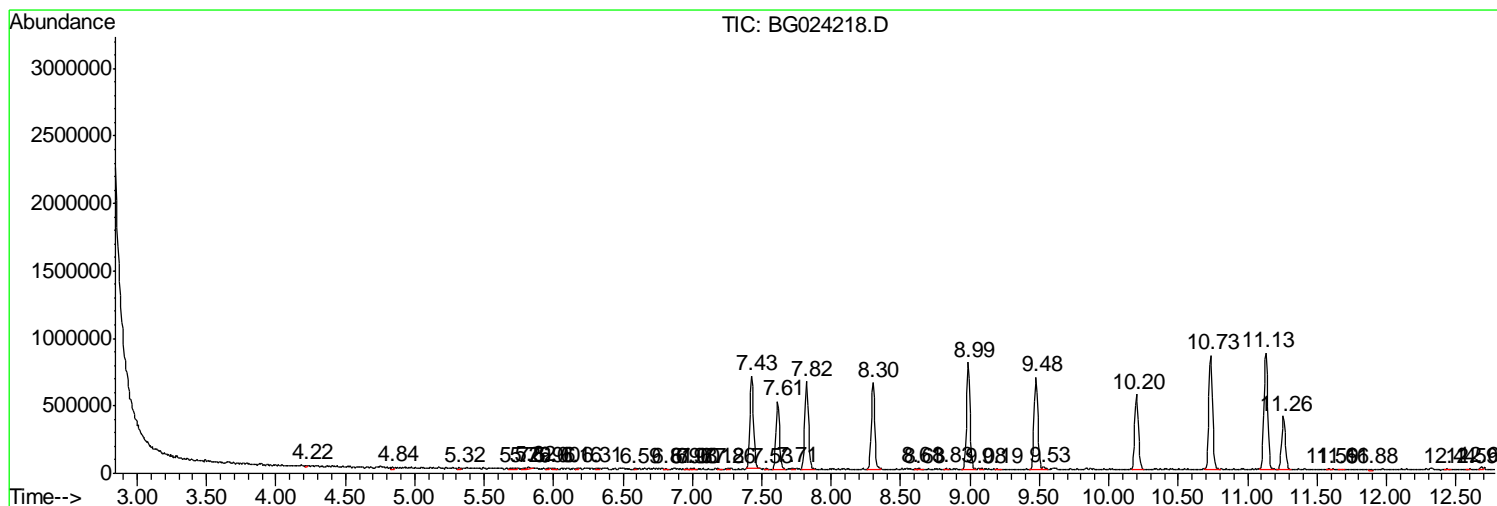
Sum of corrected areas: 53123925

Data Path : Z:\HPCHEM1\BNA_G\DATA\BG100716\
 Data File : BG024218.D
 Acq On : 7 Oct 2016 3:29
 Operator : UM/SJ
 Sample : H5082-16
 Misc :
 ALS Vial : 19 Sample Multiplier: 1

Instrument :
 BNA_G
 ClientSampleId :
 BDPJ5

Quant Method : Z:\HPCHEM1\BNA_G\METHODS\SOM02.2-EPA-BG0100716.M
 Quant Title : SVOA CALIBRATION

TIC Library : C:\DATABASE\NIST11.L
 TIC Integration Parameters: LSCINT.P



Data Path : Z:\HPCHEM1\BNA_G\DATA\BG100716\
 Data File : BG024218.D
 Acq On : 7 Oct 2016 3:29
 Operator : UM/SJ
 Sample : H5082-16
 Misc :
 ALS Vial : 19 Sample Multiplier: 1

Instrument :
 BNA_G
 ClientSampleID :
 BDPJ5

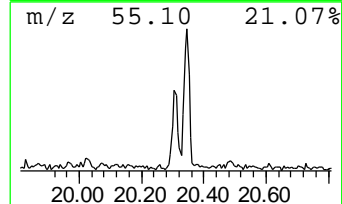
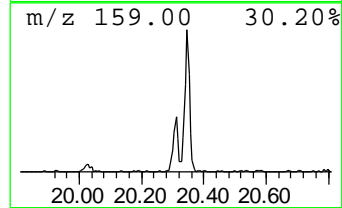
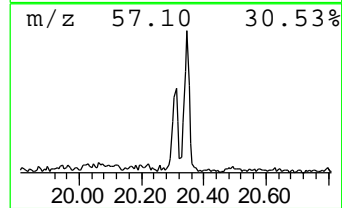
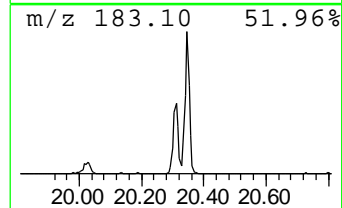
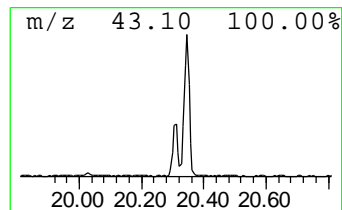
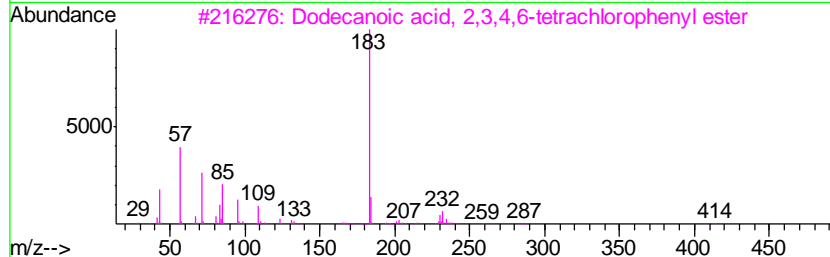
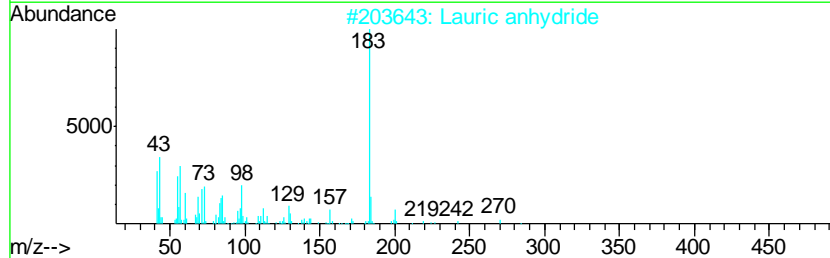
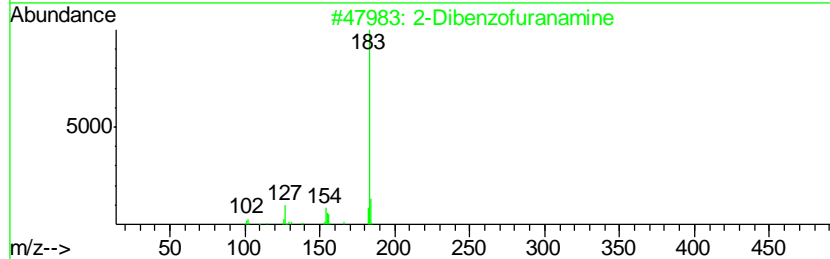
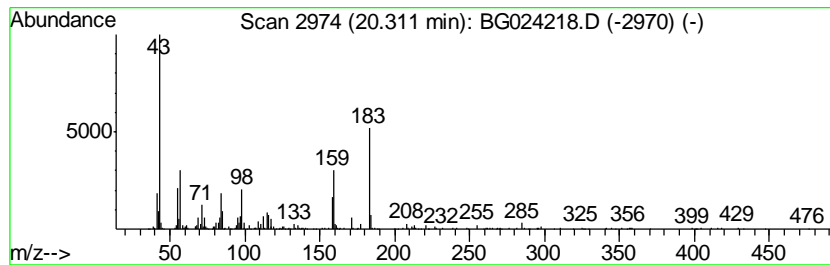
Quant Method : Z:\HPCHEM1\BNA_G\METHODS\SOM02.2-EPA-BG0100716.M
 Quant Title : SVOA CALIBRATION

TIC Library : C:\DATABASE\NIST11.L
 TIC Integration Parameters: LSCINT.P

 Peak Number 1 unknown-01 Concentration Rank 2

R.T.	EstConc	Area	Relative to ISTD	R.T.
20.31	2.58 ng/ul	425389	Chrysene-d12	21.96

Hit#	of	Tentative ID	MW	MolForm	CAS#	Qual
1	5	2-Dibenzofuranamine	183	C12H9NO	003693-22-9	37
2		Lauric anhydride	382	C24H46O3	000645-66-9	37
3		Dodecanoic acid, 2,3,4,6-tetrach...	412	C18H24Cl4O2	1000360-55-0	35
4		4-Nitrophenyl laurate	321	C18H27NO4	001956-11-2	35
5		Lauric acid, 3,4-dichlorophenyl ...	344	C18H26Cl2O2	1000357-92-7	35



Data Path : Z:\HPCHEM1\BNA_G\DATA\BG100716\
 Data File : BG024218.D
 Acq On : 7 Oct 2016 3:29
 Operator : UM/SJ
 Sample : H5082-16
 Misc :
 ALS Vial : 19 Sample Multiplier: 1

Instrument :
 BNA_G
 ClientSampleID :
 BDPJ5

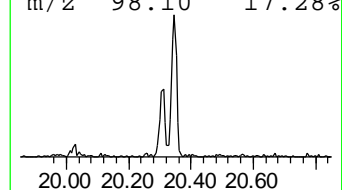
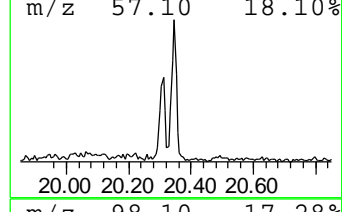
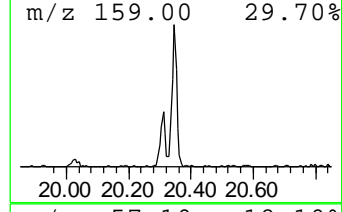
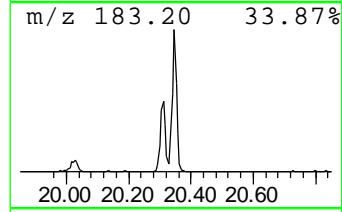
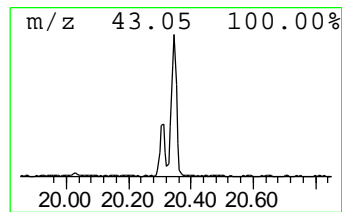
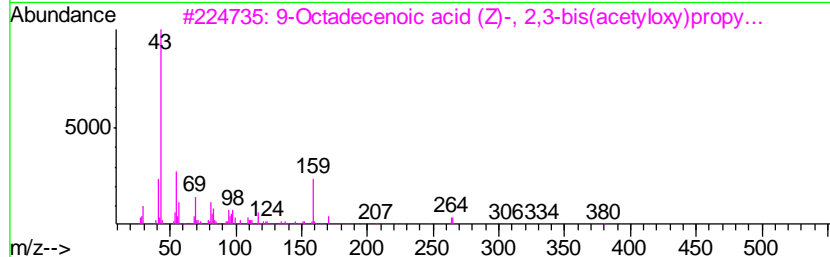
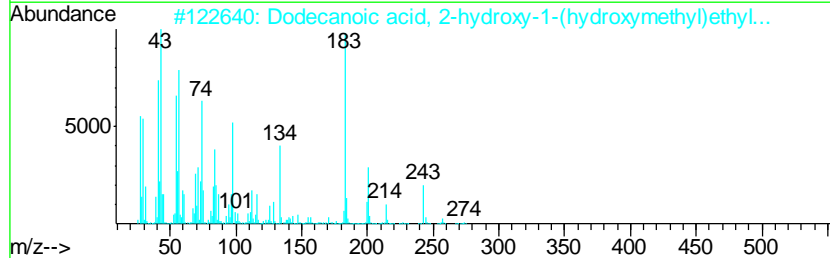
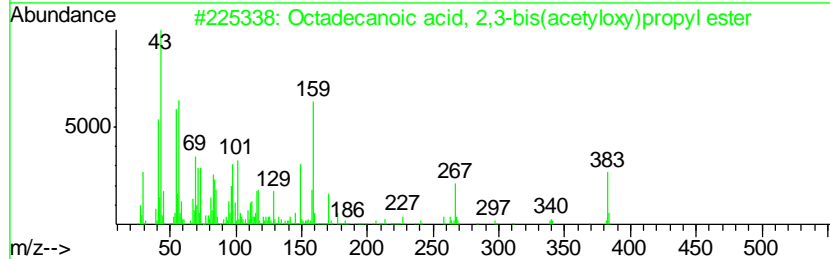
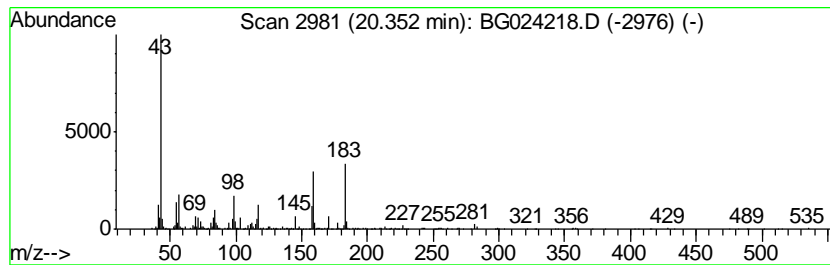
Quant Method : Z:\HPCHEM1\BNA_G\METHODS\SOM02.2-EPA-BG0100716.M
 Quant Title : SVOA CALIBRATION

TIC Library : C:\DATABASE\NIST11.L
 TIC Integration Parameters: LSCINT.P

 Peak Number 2 unknown-02 Concentration Rank 1

R.T.	EstConc	Area	Relative to ISTD	R.T.
20.35	5.70 ng/ul	939699	Chrysene-d12	21.96

Hit#	of	Tentative ID	MW	MolForm	CAS#	Qual
1	5	Octadecanoic acid, 2,3-bis(acetyloxy)propyl ester	442	C25H46O6	033599-07-4	37
2		Dodecanoic acid, 2-hydroxy-1-(hydroxymethyl)ethyl ester	274	C15H30O4	001678-45-1	35
3		9-Octadecenoic acid (Z)-, 2,3-bis(acetyloxy)propyl ester	440	C25H44O6	055401-64-4	17
4		Eicosanoic acid, 2,3-bis(acetyloxy)propyl ester	470	C27H50O6	055429-67-9	12
5		Dodecanoic acid, 2,3-dihydroxypropyl ester	274	C15H30O4	000142-18-7	12



Data Path : Z:\HPCHEM1\BNA_G\DATA\BG100716\
Data File : BG024218.D
Acq On : 7 Oct 2016 3:29
Operator : UM/SJ
Sample : H5082-16
Misc :
ALS Vial : 19 Sample Multiplier: 1

Instrument :
BNA_G
ClientSampleId :
BDPJ5

Quant Method : Z:\HPCHEM1\BNA_G\METHODS\SOM02.2-EPA-BG0100716.M
Quant Title : SVOA CALIBRATION

TIC Library : C:\DATABASE\NIST11.L
TIC Integration Parameters: LSCINT.P

TIC Top Hit name	RT	EstConc	Units	Response	--Internal Standard--			
					#	RT	Resp	Conc
unknown-01	20.31	2.6	ng/ul	425389	5	21.96	3294510	20.0
unknown-02	20.35	5.7	ng/ul	939699	5	21.96	3294510	20.0