

Data Path : Z:\svoasrv\HPCHEM1\BNA_G\Data\BG100721\
 Data File : BG050479.D
 Acq On : 7 Oct 2021 11:55
 Operator : CG/JU
 Sample : PB139663TB
 Misc :
 ALS Vial : 3 Sample Multiplier: 1

Instrument :
 BNA_G
 ClientSampleId :
 PB139663TB

Quant Time: Oct 07 13:20:52 2021
 Quant Method : Z:\svoasrv\HPCHEM1\BNA_G\Methods\8270-BG100621.M
 Quant Title : ASP BNA STANDARDS FOR 5 POINT CALIBRATION
 QLast Update : Wed Oct 06 15:51:01 2021
 Response via : Initial Calibration

Compound	R.T.	QIon	Response	Conc	Units	Dev(Min)

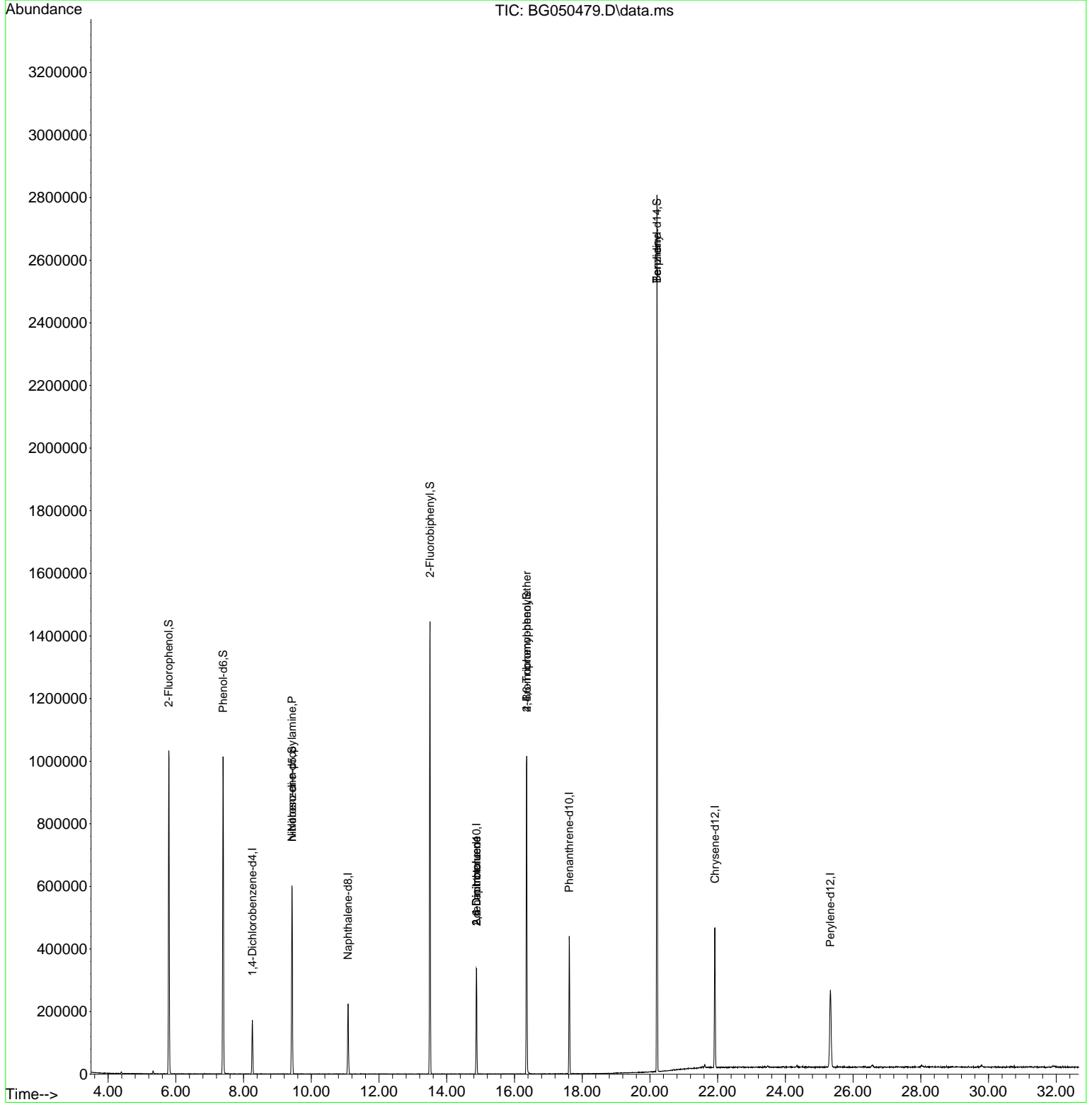
Internal Standards						
1) 1,4-Dichlorobenzene-d4	8.258	152	45503	20.000	ng	0.00
21) Naphthalene-d8	11.084	136	182882	20.000	ng	# 0.00
39) Acenaphthene-d10	14.880	164	115862	20.000	ng	0.00
64) Phenanthrene-d10	17.618	188	266418	20.000	ng	# 0.00
76) Chrysene-d12	21.919	240	273594	20.000	ng	# 0.00
86) Perylene-d12	25.327	264	265825	20.000	ng	0.00
System Monitoring Compounds						
5) 2-Fluorophenol	5.791	112	424970	139.674	ng	0.00
7) Phenol-d6	7.395	99	554808	125.946	ng	0.00
23) Nitrobenzene-d5	9.428	82	399977	90.536	ng	0.00
42) 2,4,6-Tribromophenol	16.361	330	145489	131.650	ng	0.00
45) 2-Fluorobiphenyl	13.505	172	705395	91.630	ng	0.00
79) Terphenyl-d14	20.209	244	1196612	85.235	ng	0.00
Target Compounds						
9) Benzaldehyde	7.395	77	1146	Below Cal		Qvalue # 10
19) n-Nitroso-di-n-propyla...	9.428	70	56949	17.737	ng	# 71
51) 2,6-Dinitrotoluene	14.880	165	15074	8.594	ng	# 12
57) 2,4-Dinitrotoluene	14.880	165	15074	6.097	ng	# 17
67) 4-Bromophenyl-phenylether	16.361	248	12354	4.602	ng	# 1
77) Benzidine	20.209	184	24853	2.803	ng	# 91

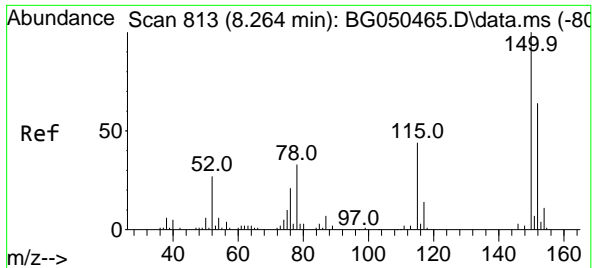
(#) = qualifier out of range (m) = manual integration (+) = signals summed

Data Path : Z:\svoasrv\HPCHEM1\BNA_G\Data\BG100721\
 Data File : BG050479.D
 Acq On : 7 Oct 2021 11:55
 Operator : CG/JU
 Sample : PB139663TB
 Misc :
 ALS Vial : 3 Sample Multiplier: 1

Instrument :
 BNA_G
ClientSampleId :
 PB139663TB

Quant Time: Oct 07 13:20:52 2021
 Quant Method : Z:\svoasrv\HPCHEM1\BNA_G\Methods\8270-BG100621.M
 Quant Title : ASP BNA STANDARDS FOR 5 POINT CALIBRATION
 QLast Update : Wed Oct 06 15:51:01 2021
 Response via : Initial Calibration

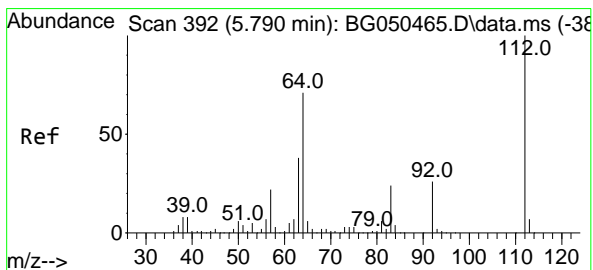
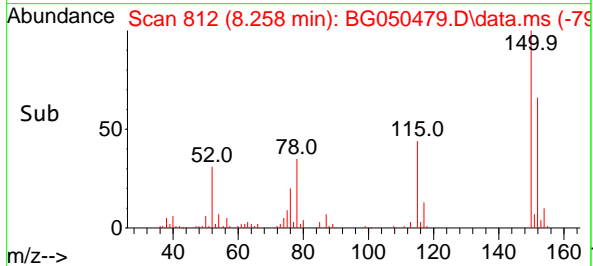
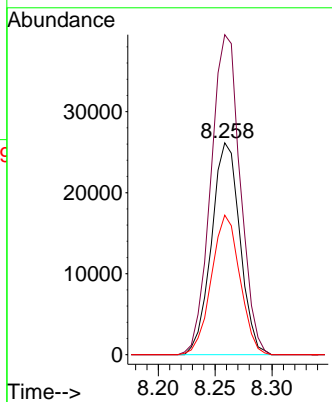
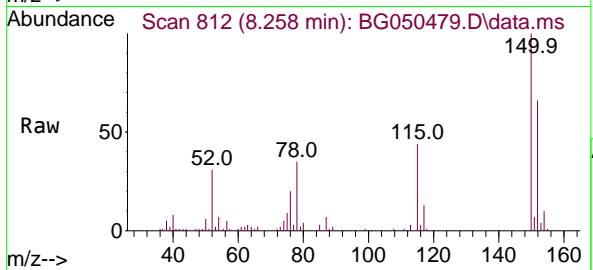




#1
 1,4-Dichlorobenzene-d4
 Concen: 20.000 ng
 RT: 8.258 min Scan# 812
 Delta R.T. -0.006 min
 Lab File: BG050479.D
 Acq: 7 Oct 2021 11:55

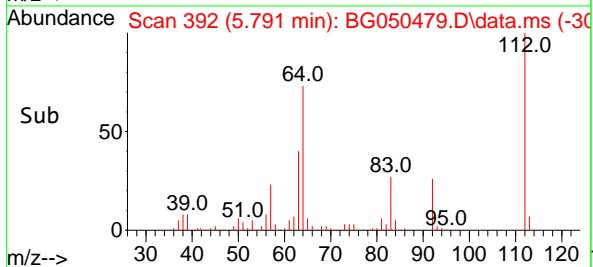
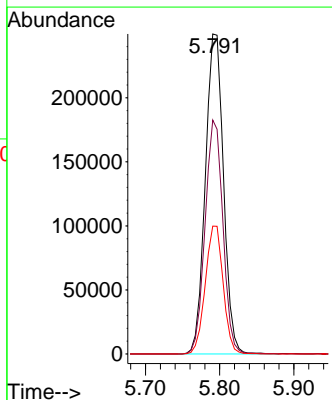
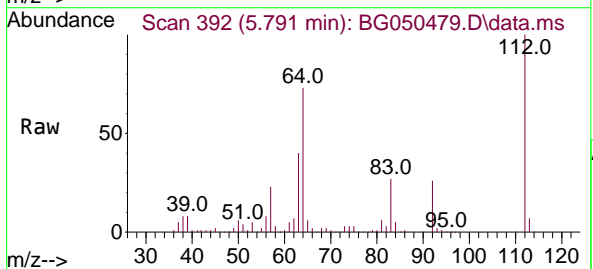
Instrument :
 BNA_G
 ClientSampled :
 PB139663TB

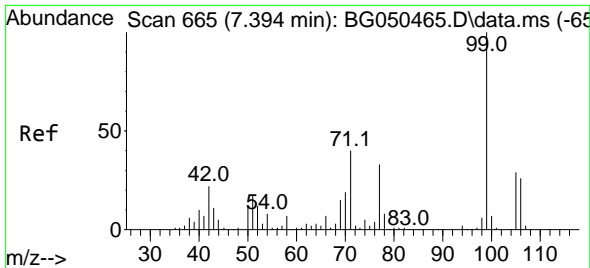
Tgt Ion:152 Resp: 45503
 Ion Ratio Lower Upper
 152 100
 150 151.0 119.4 179.0
 115 65.8 60.2 90.4



#5
 2-Fluorophenol
 Concen: 139.674 ng
 RT: 5.791 min Scan# 392
 Delta R.T. 0.001 min
 Lab File: BG050479.D
 Acq: 7 Oct 2021 11:55

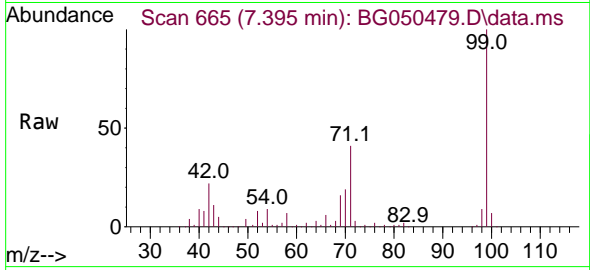
Tgt Ion:112 Resp: 424970
 Ion Ratio Lower Upper
 112 100
 64 73.1 46.7 70.1#
 63 40.0 35.3 52.9



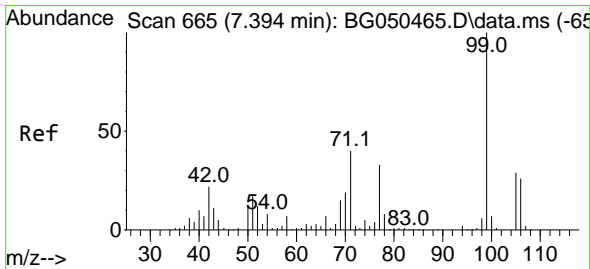
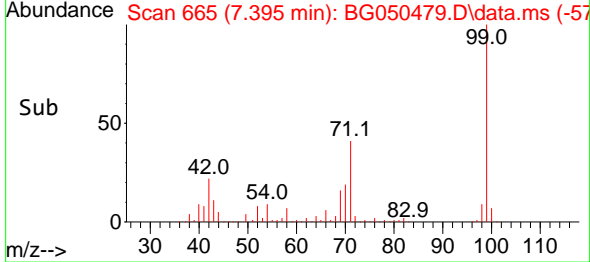
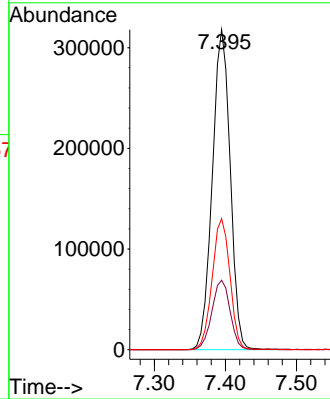


#7
 Phenol-d6
 Concen: 125.946 ng
 RT: 7.395 min Scan# 665
 Delta R.T. 0.001 min
 Lab File: BG050479.D
 Acq: 7 Oct 2021 11:55

Instrument :
 BNA_G
 ClientSampled :
 PB139663TB

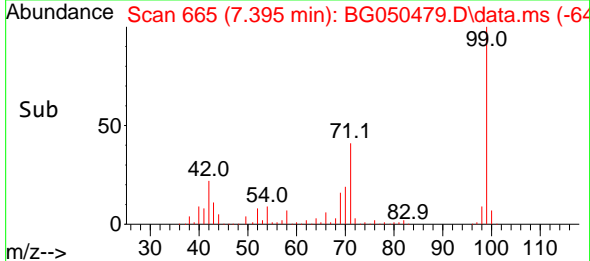
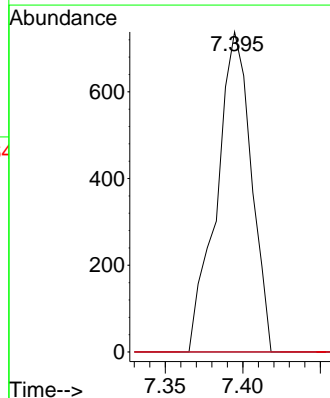
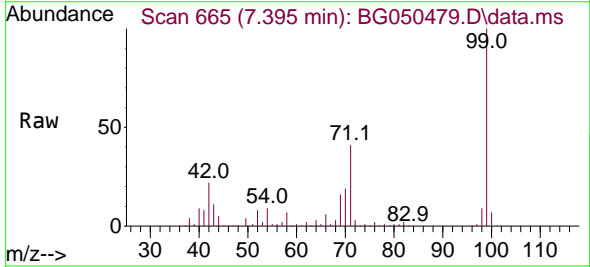


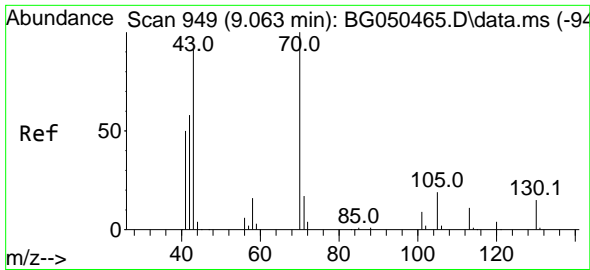
Tgt Ion: 99 Resp: 554808
 Ion Ratio Lower Upper
 99 100
 42 21.7 20.5 30.7
 71 41.0 41.5 62.3#



#9
 Benzaldehyde
 Concen: Below Cal
 RT: 7.395 min Scan# 665
 Delta R.T. 0.001 min
 Lab File: BG050479.D
 Acq: 7 Oct 2021 11:55

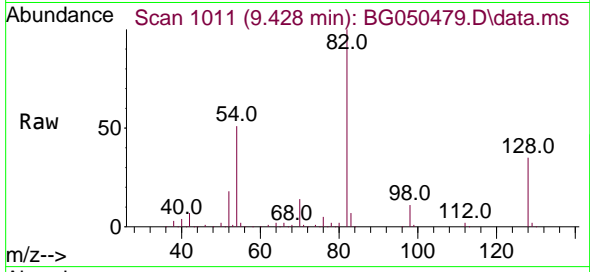
Tgt Ion: 77 Resp: 1146
 Ion Ratio Lower Upper
 77 100
 105 0.0 68.8 108.8#
 106 0.0 47.9 87.9#





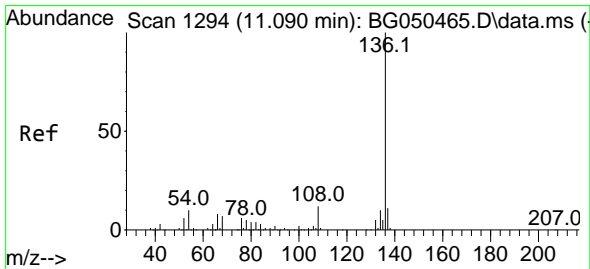
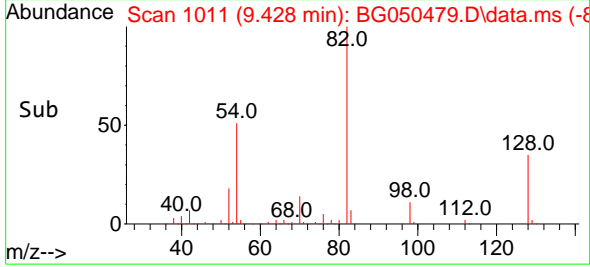
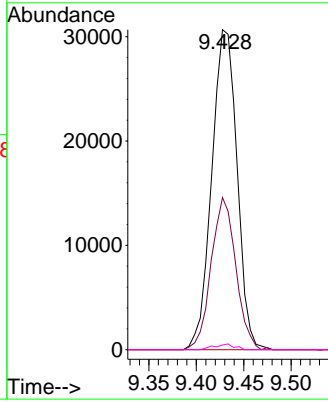
#19
 n-Nitroso-di-n-propylamine
 Concen: 17.737 ng
 RT: 9.428 min Scan# 1011
 Delta R.T. 0.365 min
 Lab File: BG050479.D
 Acq: 7 Oct 2021 11:55

Instrument :
 BNA_G
 ClientSampleId :
 PB139663TB

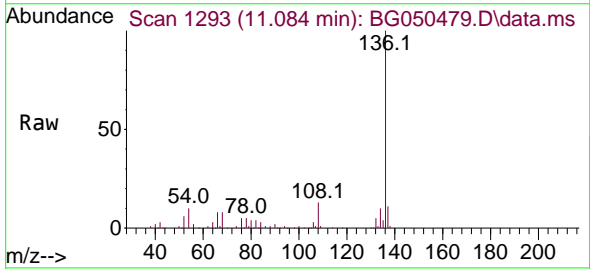


Tgt Ion: 70 Resp: 56949

Ion	Ratio	Lower	Upper
70	100		
42	47.5	54.5	81.7#
101	0.0	9.0	13.6#
130	1.5	17.0	25.6#

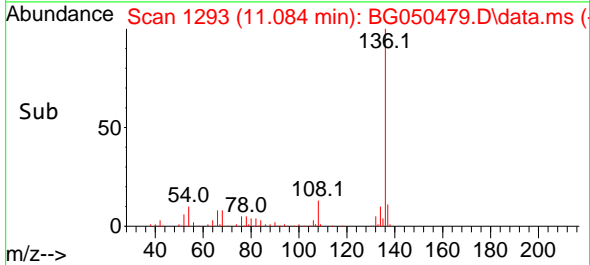
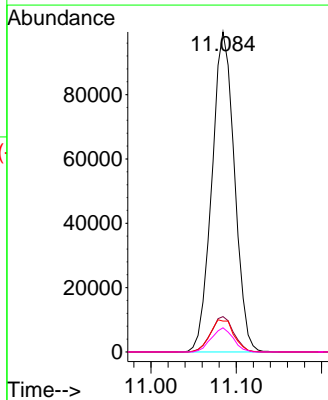


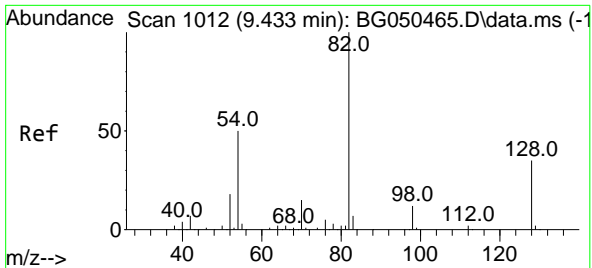
#21
 Naphthalene-d8
 Concen: 20.000 ng
 RT: 11.084 min Scan# 1293
 Delta R.T. -0.005 min
 Lab File: BG050479.D
 Acq: 7 Oct 2021 11:55



Tgt Ion: 136 Resp: 182882

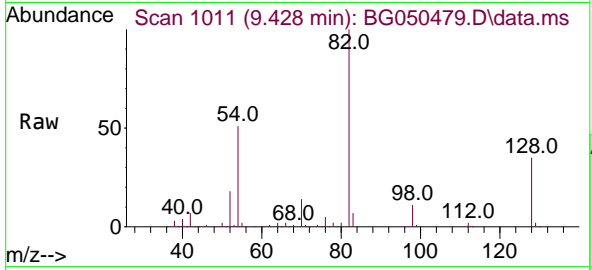
Ion	Ratio	Lower	Upper
136	100		
137	11.1	8.2	12.2
54	9.6	5.5	8.3#
68	7.5	2.3	3.5#





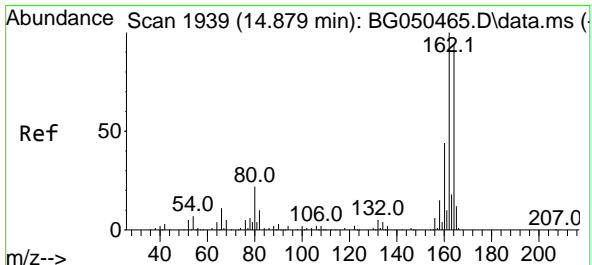
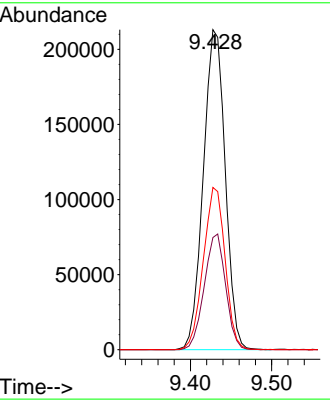
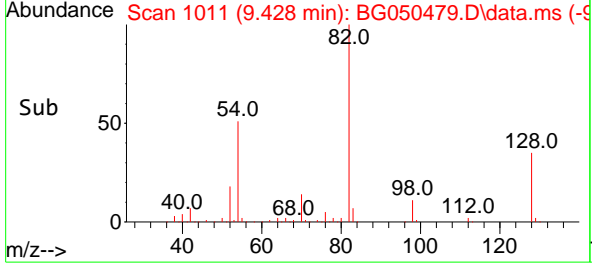
#23
 Nitrobenzene-d5
 Concen: 90.536 ng
 RT: 9.428 min Scan# 1011
 Delta R.T. -0.005 min
 Lab File: BG050479.D
 Acq: 7 Oct 2021 11:55

Instrument :
 BNA_G
ClientSampled :
 PB139663TB

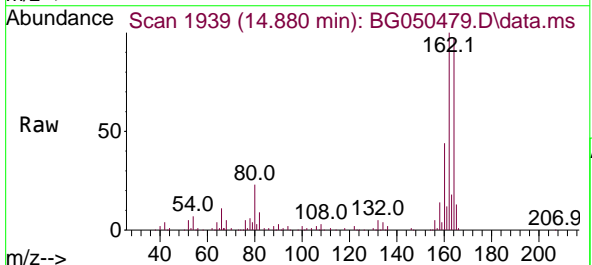


Tgt Ion: 82 Resp: 399977

Ion	Ratio	Lower	Upper
82	100		
128	35.0	29.8	44.6
54	50.7	45.8	68.8

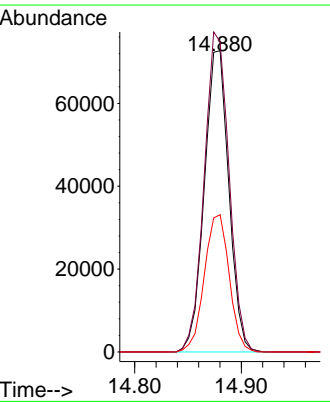
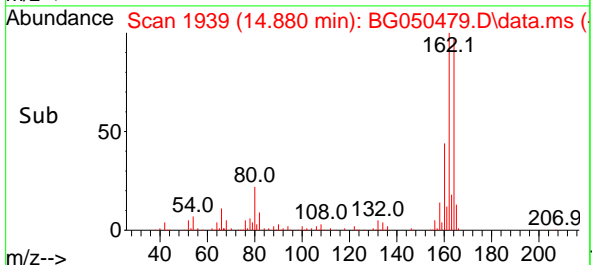


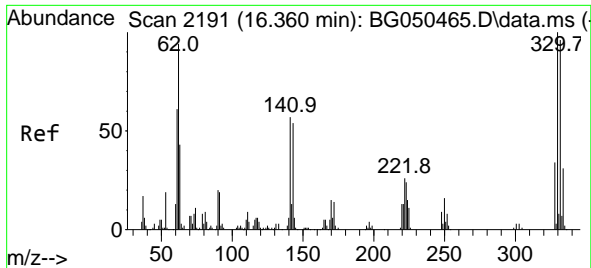
#39
 Acenaphthene-d10
 Concen: 20.000 ng
 RT: 14.880 min Scan# 1939
 Delta R.T. 0.001 min
 Lab File: BG050479.D
 Acq: 7 Oct 2021 11:55



Tgt Ion: 164 Resp: 115862

Ion	Ratio	Lower	Upper
164	100		
162	102.9	81.4	122.0
160	45.6	34.9	52.3

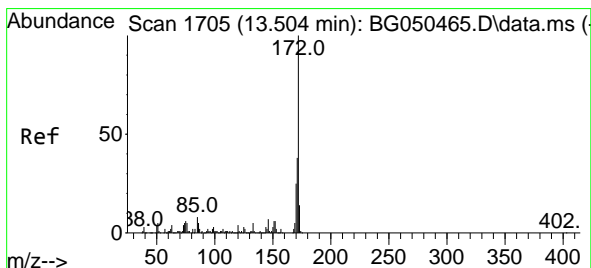
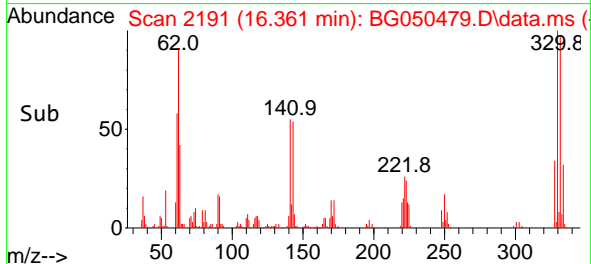
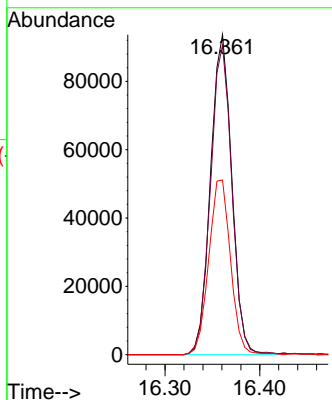
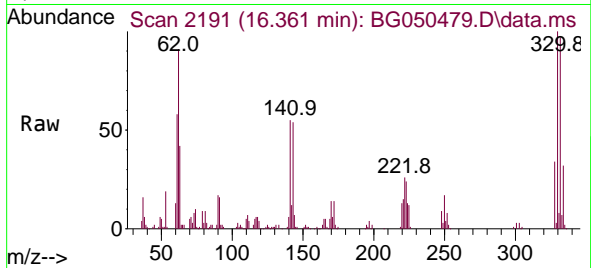




#42
 2,4,6-Tribromophenol
 Concen: 131.650 ng
 RT: 16.361 min Scan# 2191
 Delta R.T. 0.001 min
 Lab File: BG050479.D
 Acq: 7 Oct 2021 11:55

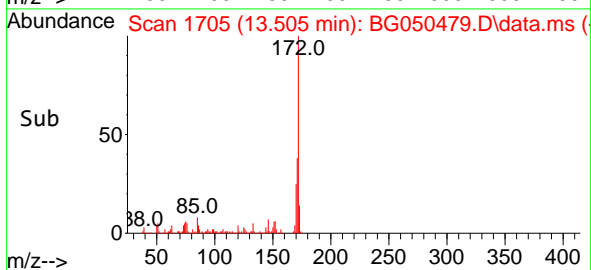
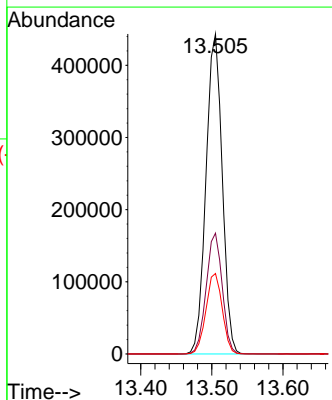
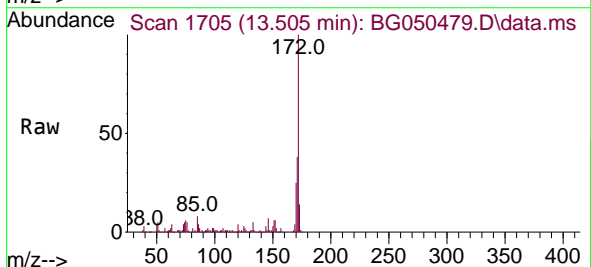
Instrument :
 BNA_G
 ClientSampled :
 PB139663TB

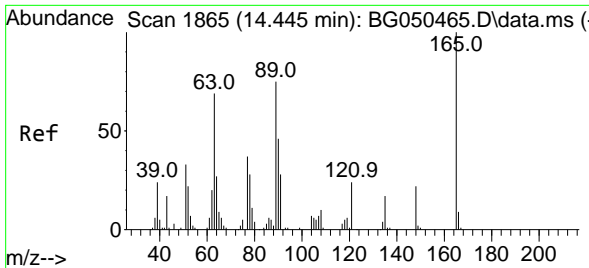
Tgt Ion:330 Resp: 145489
 Ion Ratio Lower Upper
 330 100
 332 97.4 77.3 115.9
 141 56.1 35.6 53.4#



#45
 2-Fluorobiphenyl
 Concen: 91.630 ng
 RT: 13.505 min Scan# 1705
 Delta R.T. 0.001 min
 Lab File: BG050479.D
 Acq: 7 Oct 2021 11:55

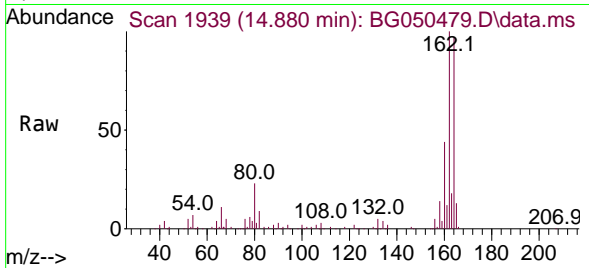
Tgt Ion:172 Resp: 705395
 Ion Ratio Lower Upper
 172 100
 171 37.8 28.6 43.0
 170 25.1 18.6 27.8





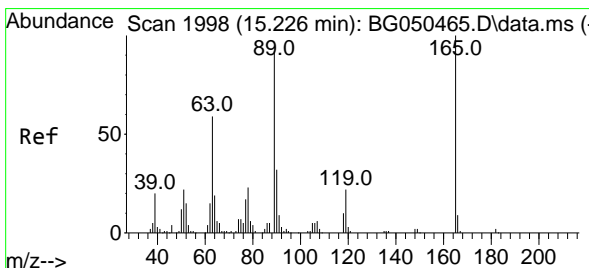
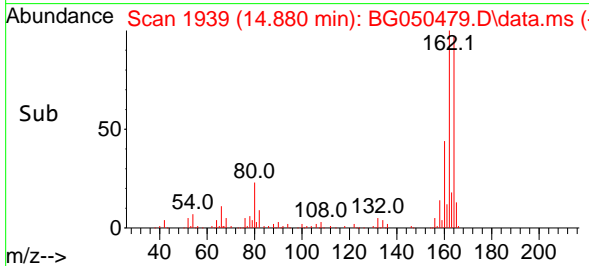
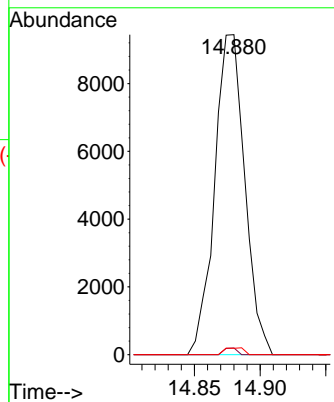
#51
 2,6-Dinitrotoluene
 Concen: 8.594 ng
 RT: 14.880 min Scan# 1939
 Delta R.T. 0.435 min
 Lab File: BG050479.D
 Acq: 7 Oct 2021 11:55

Instrument :
 BNA_G
 ClientSampled :
 PB139663TB

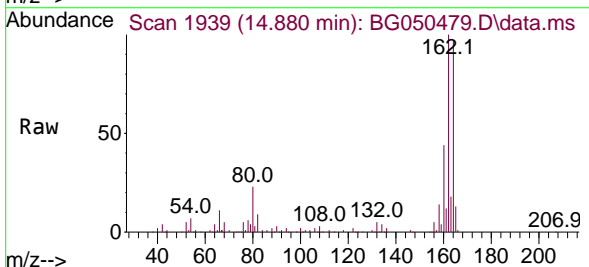


Tgt Ion:165 Resp: 15074

Ion	Ratio	Lower	Upper
165	100		
63	2.1	63.3	94.9#
89	2.0	63.4	95.0#

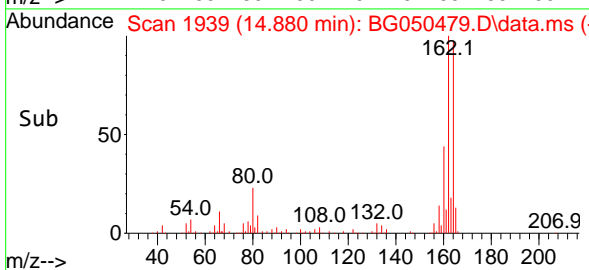
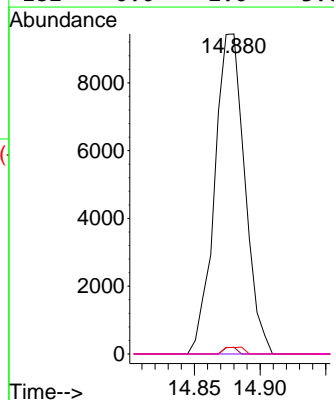


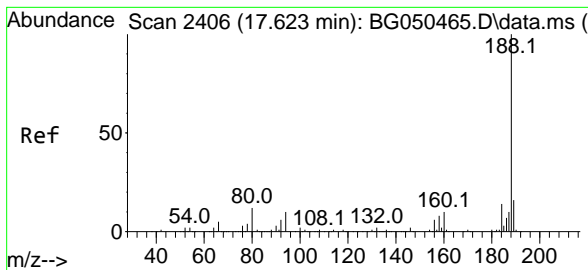
#57
 2,4-Dinitrotoluene
 Concen: 6.097 ng
 RT: 14.880 min Scan# 1939
 Delta R.T. -0.346 min
 Lab File: BG050479.D
 Acq: 7 Oct 2021 11:55



Tgt Ion:165 Resp: 15074

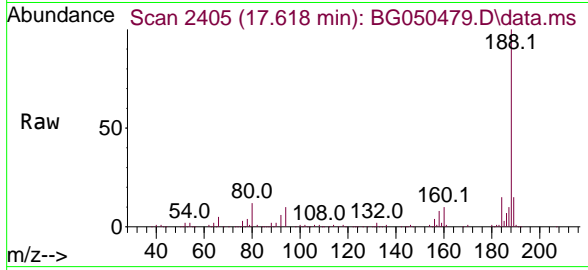
Ion	Ratio	Lower	Upper
165	100		
63	2.1	48.0	72.0#
89	2.0	65.4	98.0#
182	0.0	2.0	3.0#





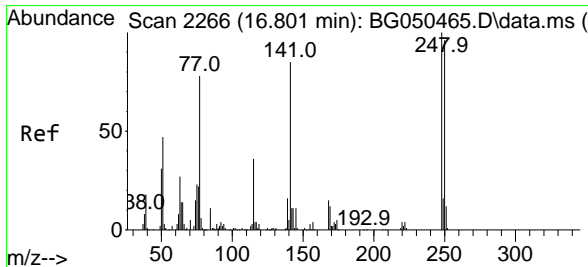
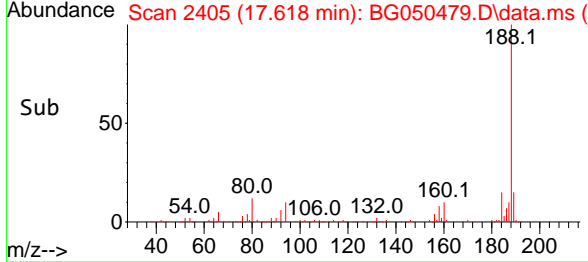
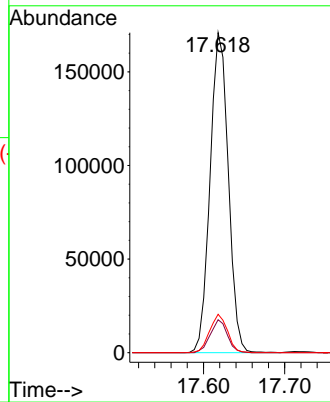
#64
 Phenanthrene-d10
 Concen: 20.000 ng
 RT: 17.618 min Scan# 2405
 Delta R.T. -0.005 min
 Lab File: BG050479.D
 Acq: 7 Oct 2021 11:55

Instrument :
 BNA_G
ClientSampled :
 PB139663TB

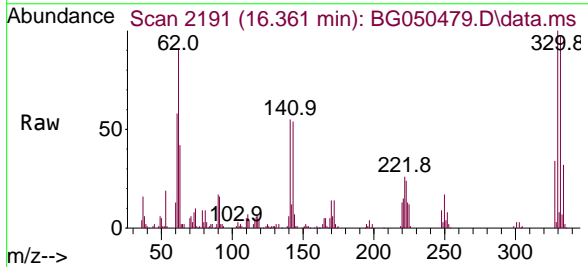


Tgt Ion:188 Resp: 266418

Ion	Ratio	Lower	Upper
188	100		
94	10.3	5.4	8.0#
80	12.0	3.7	5.5#

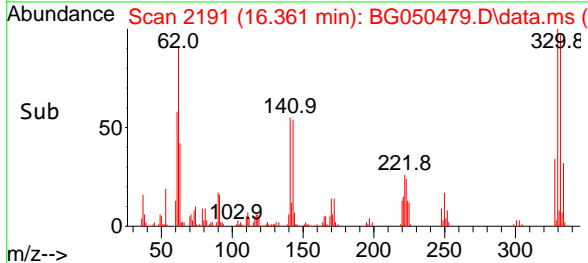
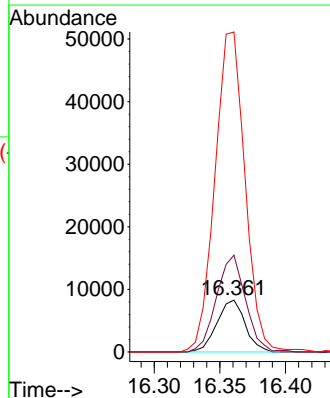


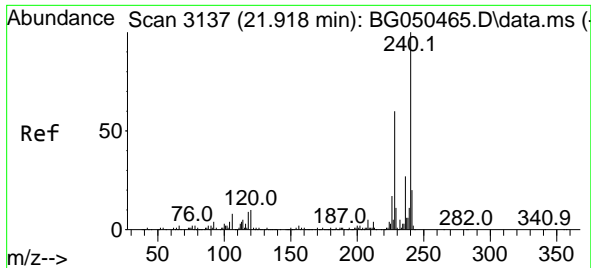
#67
 4-Bromophenyl-phenylether
 Concen: 4.602 ng
 RT: 16.361 min Scan# 2191
 Delta R.T. -0.440 min
 Lab File: BG050479.D
 Acq: 7 Oct 2021 11:55



Tgt Ion:248 Resp: 12354

Ion	Ratio	Lower	Upper
248	100		
250	186.9	76.1	114.1#
141	617.4	65.4	98.2#

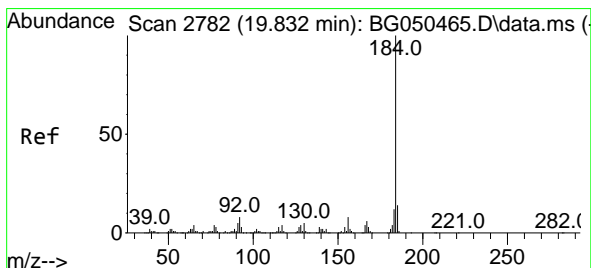
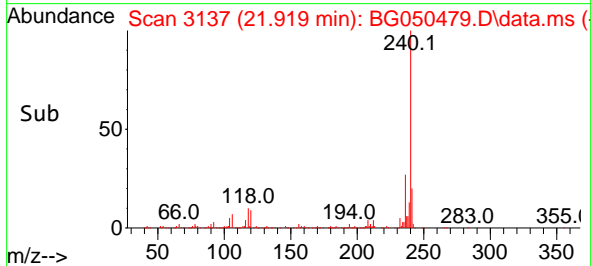
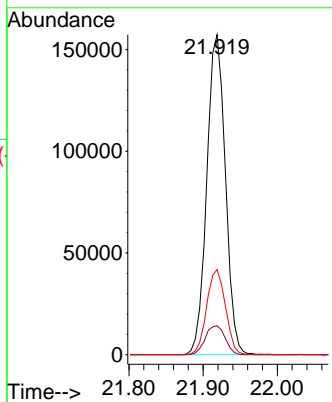
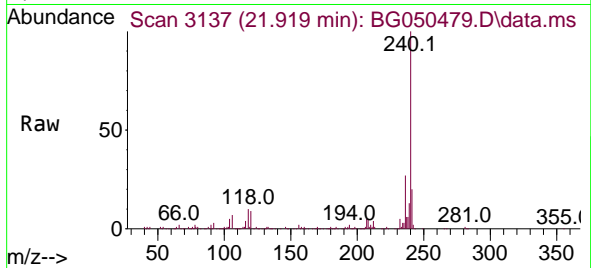




#76
 Chrysene-d12
 Concen: 20.000 ng
 RT: 21.919 min Scan# 3137
 Delta R.T. 0.001 min
 Lab File: BG050479.D
 Acq: 7 Oct 2021 11:55

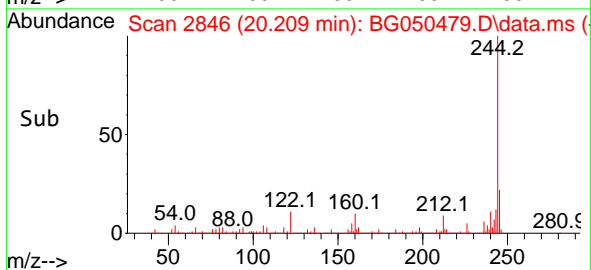
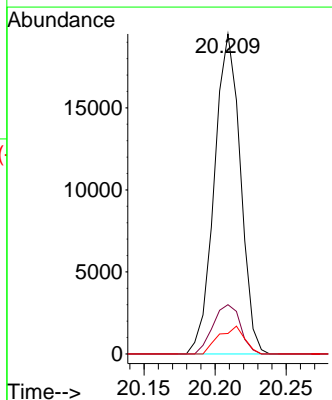
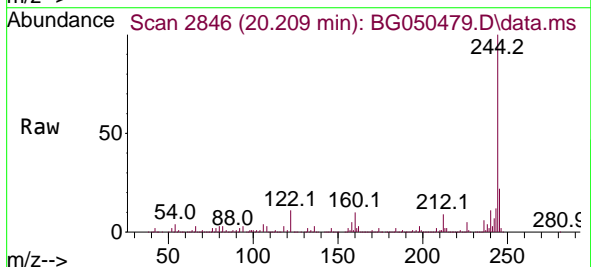
Instrument :
 BNA_G
ClientSampled :
 PB139663TB

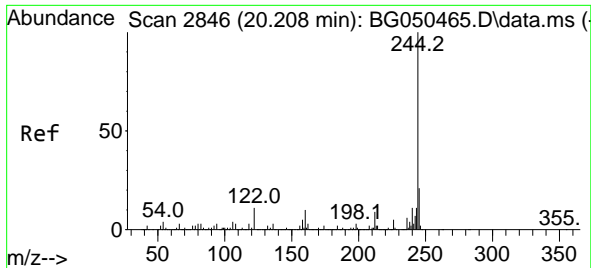
Tgt Ion	Resp	Lower	Upper
240	100		
120	9.0	4.2	6.2#
236	26.6	21.8	32.6



#77
 Benzdine
 Concen: 2.803 ng
 RT: 20.209 min Scan# 2846
 Delta R.T. 0.377 min
 Lab File: BG050479.D
 Acq: 7 Oct 2021 11:55

Tgt Ion	Resp	Lower	Upper
184	100		
185	15.4	10.7	16.1
183	6.4	9.4	14.0#

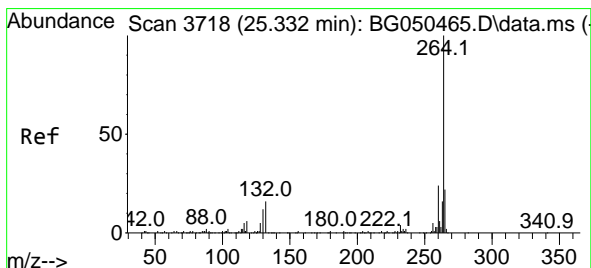
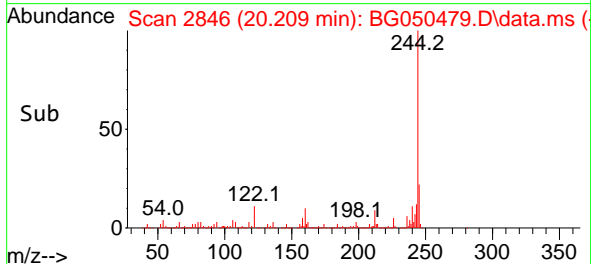
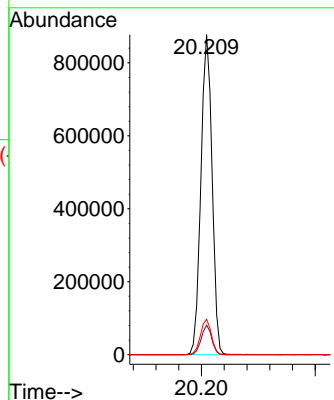
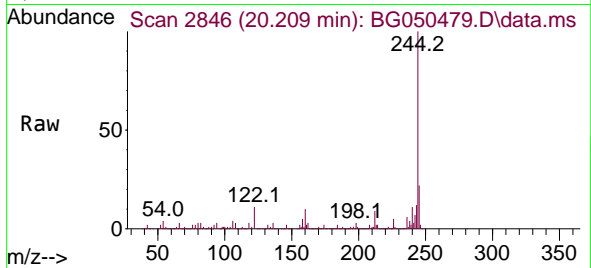




#79
 Terphenyl-d14
 Concen: 85.235 ng
 RT: 20.209 min Scan# 2846
 Delta R.T. 0.001 min
 Lab File: BG050479.D
 Acq: 7 Oct 2021 11:55

Instrument :
 BNA_G
 ClientSampled :
 PB139663TB

Tgt Ion:244 Resp: 1196612
 Ion Ratio Lower Upper
 244 100
 212 9.3 6.9 10.3
 122 11.1 5.0 7.6#



#86
 Perylene-d12
 Concen: 20.000 ng
 RT: 25.327 min Scan# 3717
 Delta R.T. -0.005 min
 Lab File: BG050479.D
 Acq: 7 Oct 2021 11:55

Tgt Ion:264 Resp: 265825
 Ion Ratio Lower Upper
 264 100
 260 24.5 19.4 29.2
 265 20.7 16.9 25.3

