

Data Path : Z:\svoasrv\HPCHEM1\BNA_G\Data\BG100821\
 Data File : BG050522.D
 Acq On : 8 Oct 2021 23:47
 Operator : CG/JU
 Sample : M4081-01
 Misc :
 ALS Vial : 11 Sample Multiplier: 1

Instrument :
 BNA_G
 ClientSampled :
 356

Integration Parameters: rteint.p
 Integrator: RTE
 Smoothing : ON Filtering: 5
 Sampling : 1 Min Area: 3 % of largest Peak
 Start Thrs: 0.2 Max Peaks: 100
 Stop Thrs : 0 Peak Location: TOP

If leading or trailing edge < 100 prefer < Baseline drop else tangent >
 Peak separation: 5

Method : Z:\svoasrv\HPCHEM1\BNA_G\Methods\8270-BG100621.M
 Title : ASP BNA STANDARDS FOR 5 POINT CALIBRATION

Signal : TIC: BG050522.D\data.ms

peak #	R.T. min	first scan	max scan	last scan	PK TY	peak height	corr. area	corr. % max.	% of total
1	5.333	307	314	325	rVB	21567	37485	1.82%	0.222%
2	5.797	385	393	403	rBV	937628	1542872	75.04%	9.157%
3	7.401	657	666	678	rBV	960575	1714616	83.39%	10.176%
4	8.259	805	812	826	rVB	255847	441167	21.46%	2.618%
5	9.428	1003	1011	1022	rBV	578217	1079719	52.51%	6.408%
6	10.827	1242	1249	1261	rBV	397466	661070	32.15%	3.923%
7	11.085	1285	1293	1302	rVB	344553	632704	30.77%	3.755%
8	13.500	1695	1704	1712	rBV	1169588	1847591	89.86%	10.965%
9	13.747	1741	1746	1762	rBV3	50586	111533	5.42%	0.662%
10	14.875	1931	1938	1945	rBV	546674	869130	42.27%	5.158%
11	16.355	2184	2190	2198	rBV	966795	1542564	75.03%	9.155%
12	17.619	2399	2405	2410	rBV	637350	999487	48.61%	5.932%
13	17.660	2410	2412	2419	rVB	65651	88053	4.28%	0.523%
14	18.259	2508	2514	2522	rVB	46230	62353	3.03%	0.370%
15	18.477	2545	2551	2557	rBV4	23247	47167	2.29%	0.280%
16	18.541	2557	2562	2569	rVB3	18702	33140	1.61%	0.197%
17	18.682	2580	2586	2590	rBV2	18275	33498	1.63%	0.199%
18	19.417	2707	2711	2715	rVB	106627	123993	6.03%	0.736%
19	19.546	2728	2733	2737	rVB2	33303	45361	2.21%	0.269%
20	19.658	2747	2752	2759	rBV	147697	220347	10.72%	1.308%
21	20.016	2801	2813	2821	rBV	121513	245614	11.95%	1.458%
22	20.210	2839	2846	2852	rBV	1478290	2056050	100.00%	12.202%
23	20.498	2892	2895	2903	rVB4	28044	50456	2.45%	0.299%
24	20.603	2910	2913	2916	rBV2	20977	21119	1.03%	0.125%
25	20.991	2976	2979	2983	rVB4	19463	25566	1.24%	0.152%
26	21.514	3064	3068	3075	rVB2	95936	145056	7.06%	0.861%
27	21.920	3128	3137	3142	rBV	569896	1063202	51.71%	6.310%
28	22.742	3272	3277	3286	rVB6	25682	55585	2.70%	0.330%
29	24.235	3526	3531	3539	rBV2	30217	91247	4.44%	0.542%
30	25.333	3709	3718	3730	rVB2	326240	961751	46.78%	5.708%

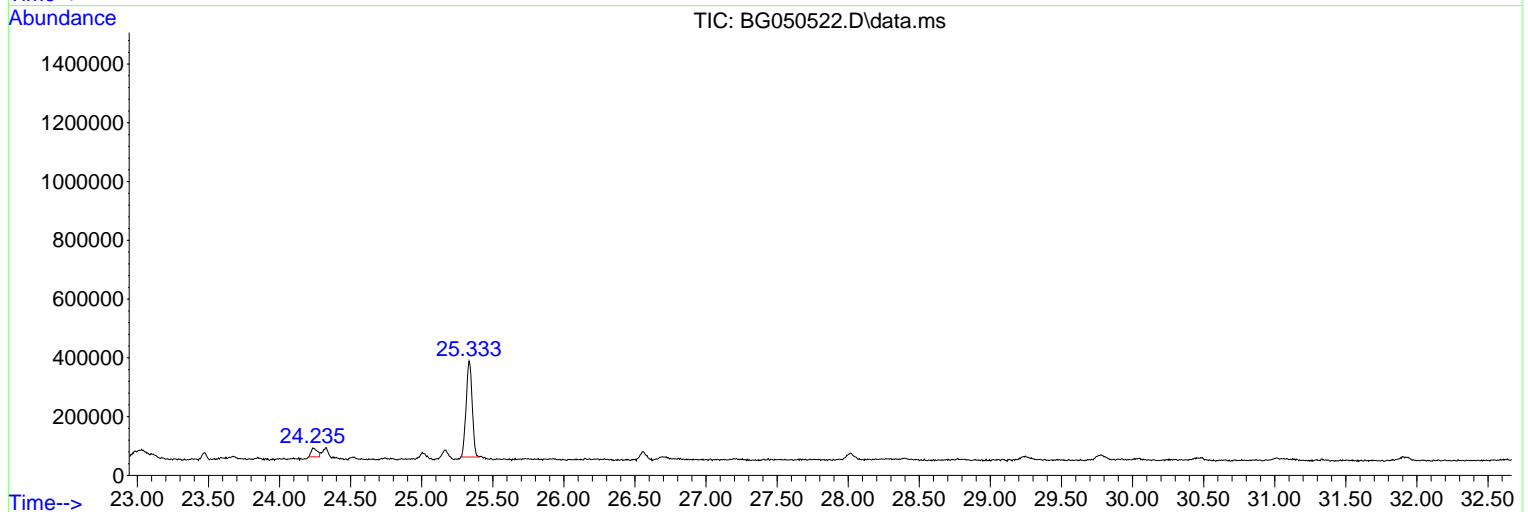
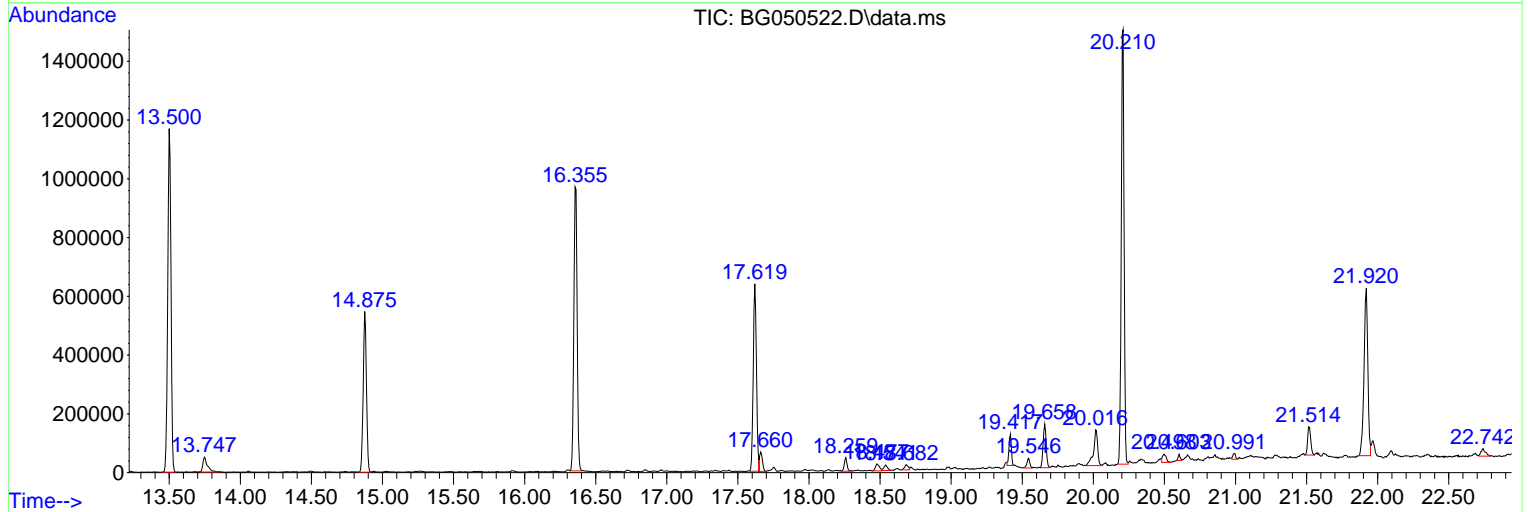
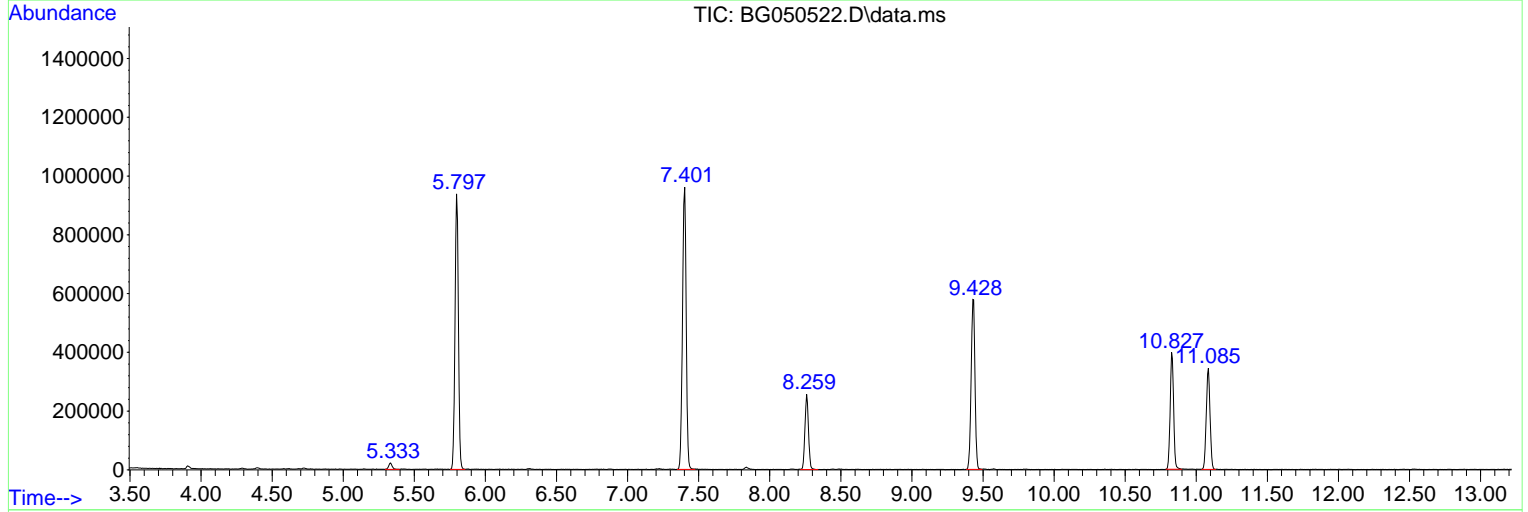
Sum of corrected areas: 16849496

Data Path : Z:\svoasrv\HPCHEM1\BNA_G\Data\BG100821\
 Data File : BG050522.D
 Acq On : 8 Oct 2021 23:47
 Operator : CG/JU
 Sample : M4081-01
 Misc :
 ALS Vial : 11 Sample Multiplier: 1

Instrument :
 BNA_G
 ClientSampleId :
 356

Quant Method : Z:\svoasrv\HPCHEM1\BNA_G\Methods\8270-BG100621.M
 Quant Title : ASP BNA STANDARDS FOR 5 POINT CALIBRATION

TIC Library : C:\Database\NIST20.L
 TIC Integration Parameters: LSCINT.P



Data Path : Z:\svoasrv\HPCHEM1\BNA_G\Data\BG100821\
 Data File : BG050522.D
 Acq On : 8 Oct 2021 23:47
 Operator : CG/JU
 Sample : M4081-01
 Misc :
 ALS Vial : 11 Sample Multiplier: 1

Instrument :
 BNA_G
 ClientSampleId :
 356

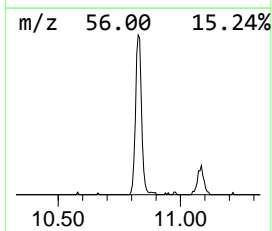
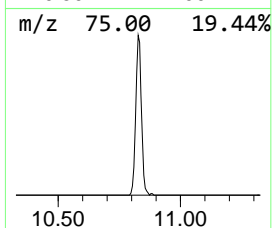
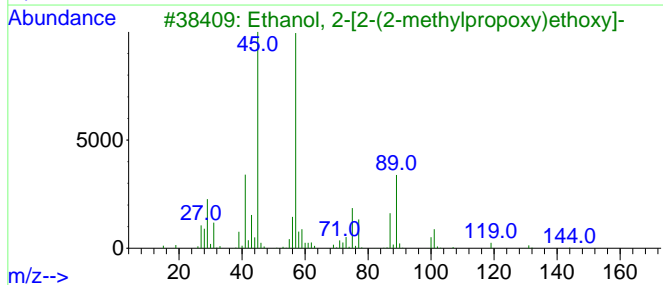
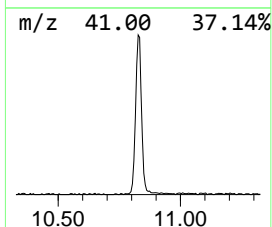
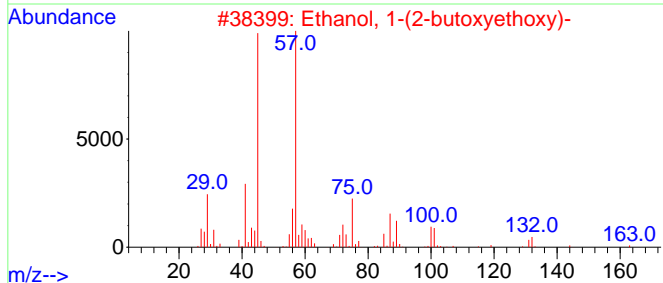
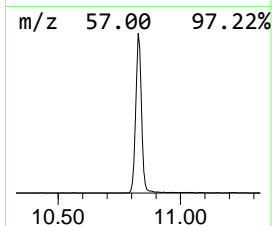
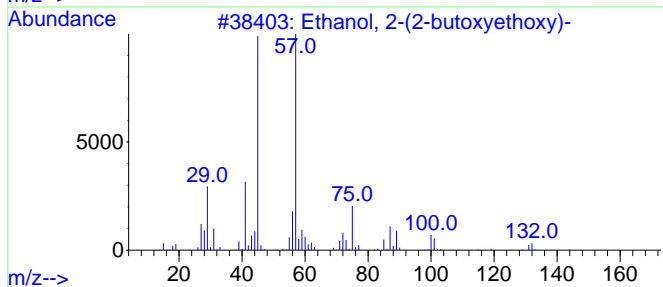
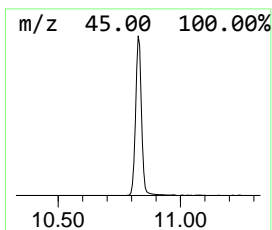
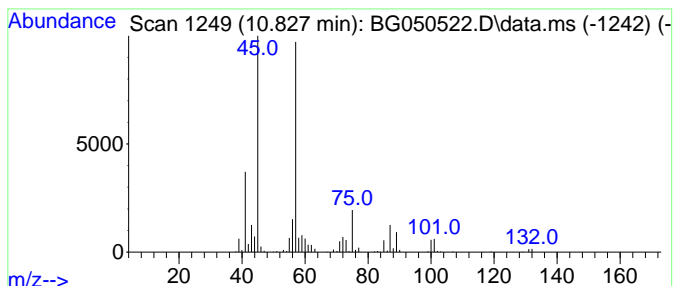
Quant Method : Z:\svoasrv\HPCHEM1\BNA_G\Methods\8270-BG100621.M
 Quant Title : ASP BNA STANDARDS FOR 5 POINT CALIBRATION

TIC Library : C:\Database\NIST20.L
 TIC Integration Parameters: LSCINT.P

 Peak Number 1 Ethanol, 2-(2-butoxyethoxy)- Concentration Rank 1

R.T.	EstConc	Area	Relative to ISTD	R.T.
10.827	20.90 ng	661070	Naphthalene-d8	11.085

Hit#	of 5	Tentative ID	MW	MolForm	CAS#	Qual
1		Ethanol, 2-(2-butoxyethoxy)-	162	C8H18O3	000112-34-5	90
2		Ethanol, 1-(2-butoxyethoxy)-	162	C8H18O3	054446-78-5	90
3		Ethanol, 2-[2-(2-methylpropoxy)e...	162	C8H18O3	018912-80-6	72
4		3,3-Dimethylbutane-2-ol	102	C6H14O	000464-07-3	50
5		Di-sec-Butyl ether	130	C8H18O	006863-58-7	50



Data Path : Z:\svoasrv\HPCHEM1\BNA_G\Data\BG100821\
 Data File : BG050522.D
 Acq On : 8 Oct 2021 23:47
 Operator : CG/JU
 Sample : M4081-01
 Misc :
 ALS Vial : 11 Sample Multiplier: 1

Instrument :
 BNA_G
 ClientSampleId :
 356

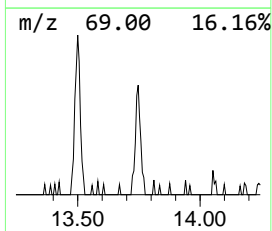
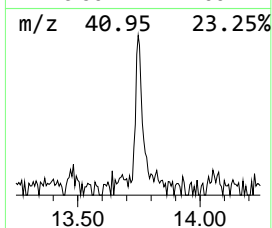
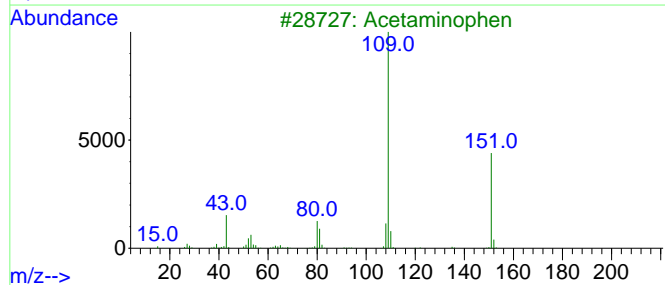
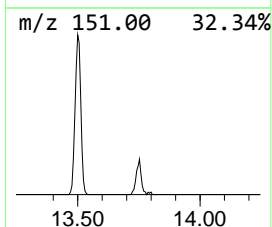
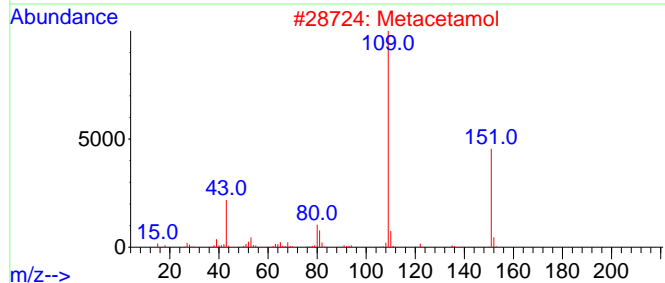
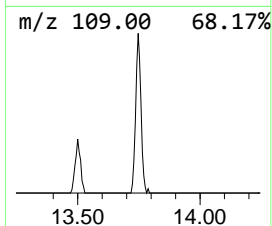
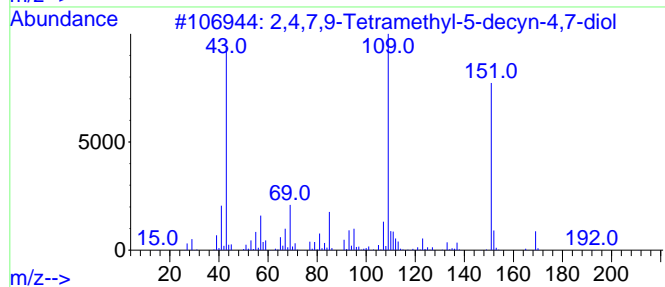
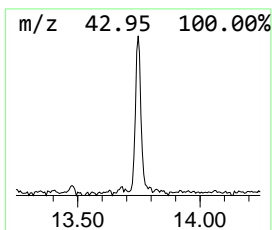
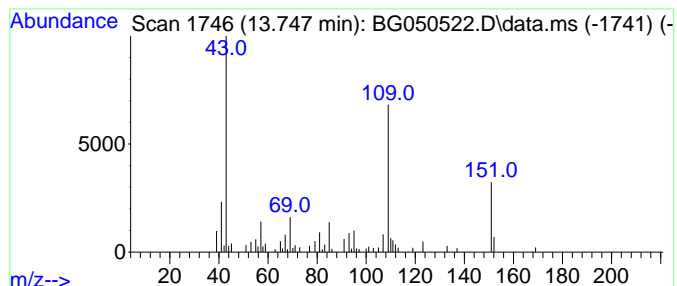
Quant Method : Z:\svoasrv\HPCHEM1\BNA_G\Methods\8270-BG100621.M
 Quant Title : ASP BNA STANDARDS FOR 5 POINT CALIBRATION

TIC Library : C:\Database\NIST20.L
 TIC Integration Parameters: LSCINT.P

 Peak Number 2 2,4,7,9-Tetramethyl-5-decyn... Concentration Rank 3

R.T.	EstConc	Area	Relative to ISTD	R.T.
13.747	2.57 ng	111533	Acenaphthene-d10	14.875

Hit#	of 5	Tentative ID	MW	MolForm	CAS#	Qual
1		2,4,7,9-Tetramethyl-5-decyn-4,7-...	226	C14H26O2	000126-86-3	91
2		Metacetamol	151	C8H9NO2	000621-42-1	49
3		Acetaminophen	151	C8H9NO2	000103-90-2	47
4		m-Isopropoxyaniline	151	C9H13NO	041406-00-2	47
5		Camphorsulfonic acid	232	C10H16O4S	003144-16-9	42



Data Path : Z:\svoasrv\HPCHEM1\BNA_G\Data\BG100821\
 Data File : BG050522.D
 Acq On : 8 Oct 2021 23:47
 Operator : CG/JU
 Sample : M4081-01
 Misc :
 ALS Vial : 11 Sample Multiplier: 1

Instrument :
 BNA_G
 ClientSampleId :
 356

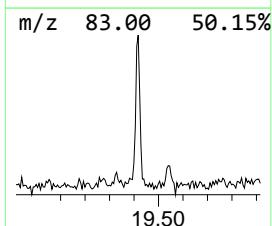
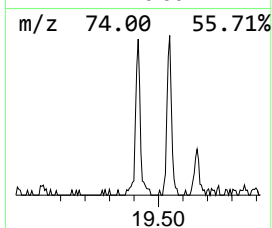
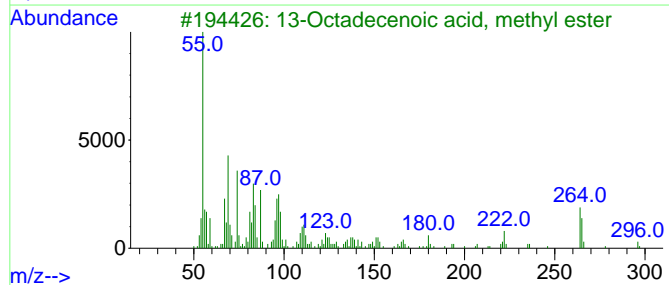
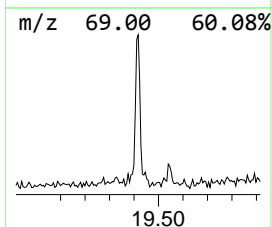
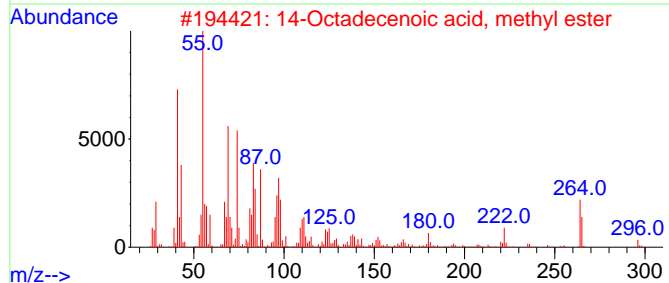
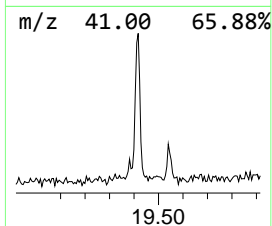
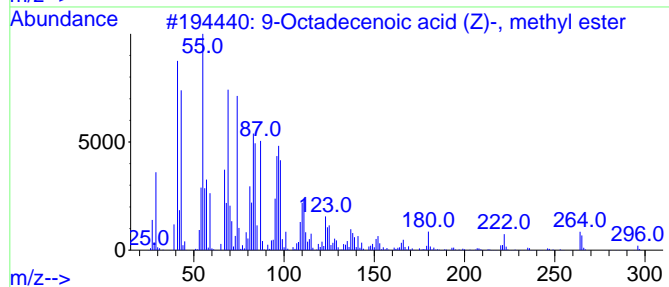
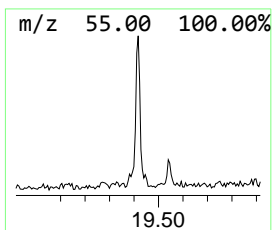
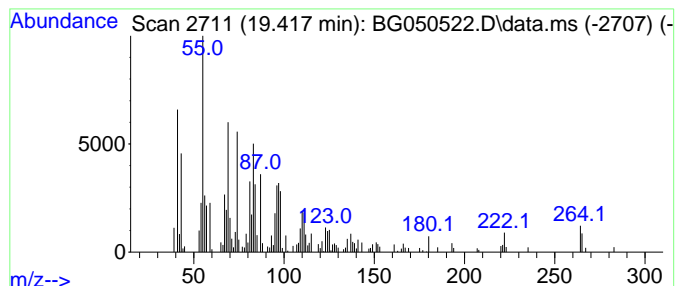
Quant Method : Z:\svoasrv\HPCHEM1\BNA_G\Methods\8270-BG100621.M
 Quant Title : ASP BNA STANDARDS FOR 5 POINT CALIBRATION

TIC Library : C:\Database\NIST20.L
 TIC Integration Parameters: LSCINT.P

 Peak Number 3 9-Octadecenoic acid (Z)-, m... Concentration Rank 4

R.T.	EstConc	Area	Relative to ISTD	R.T.
19.417	2.48 ng	123993	Phenanthrene-d10	17.619

Hit#	of 5	Tentative ID	MW	MolForm	CAS#	Qual
1		9-Octadecenoic acid (Z)-, methyl...	296	C19H36O2	000112-62-9	95
2		14-Octadecenoic acid, methyl ester	296	C19H36O2	056554-48-4	91
3		13-Octadecenoic acid, methyl ester	296	C19H36O2	056554-47-3	91
4		10-Octadecenoic acid, methyl ester	296	C19H36O2	013481-95-3	91
5		15-Octadecenoic acid, methyl ester	296	C19H36O2	004764-72-1	91



Data Path : Z:\svoasrv\HPCHEM1\BNA_G\Data\BG100821\
 Data File : BG050522.D
 Acq On : 8 Oct 2021 23:47
 Operator : CG/JU
 Sample : M4081-01
 Misc :
 ALS Vial : 11 Sample Multiplier: 1

Instrument :
 BNA_G
 ClientSampleId :
 356

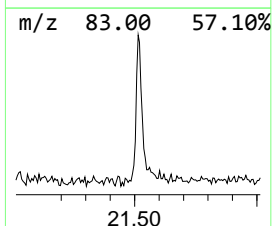
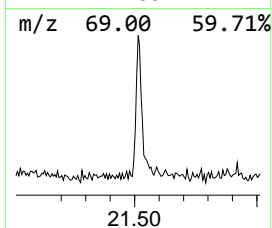
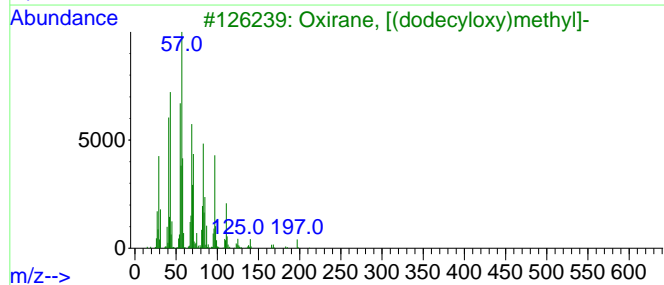
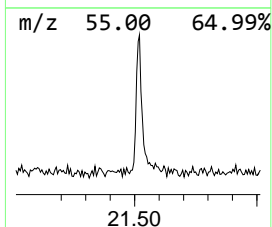
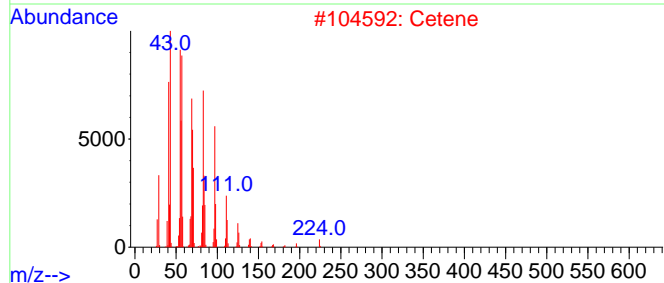
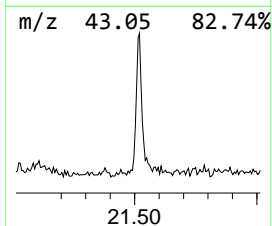
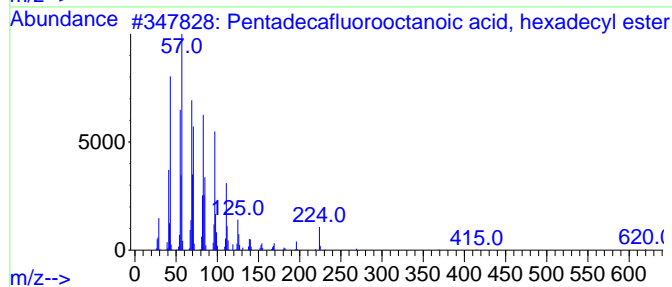
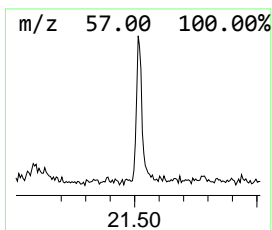
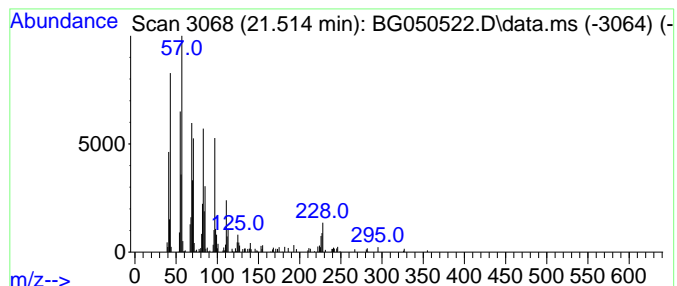
Quant Method : Z:\svoasrv\HPCHEM1\BNA_G\Methods\8270-BG100621.M
 Quant Title : ASP BNA STANDARDS FOR 5 POINT CALIBRATION

TIC Library : C:\Database\NIST20.L
 TIC Integration Parameters: LSCINT.P

 Peak Number 4 Pentadecafluorooctanoic aci... Concentration Rank 2

R.T.	EstConc	Area	Relative to ISTD	R.T.
21.514	2.73 ng	145056	Chrysene-d12	21.920

Hit#	of 5	Tentative ID	MW	MolForm	CAS#	Qual
1		Pentadecafluorooctanoic acid, he...	638	C24H33F15O2	1000406-04-6	93
2		Cetene	224	C16H32	000629-73-2	91
3		Oxirane, [(dodecyloxy)methyl]-	242	C15H30O2	002461-18-9	90
4		Pentafluoropropionic acid, hepta...	402	C20H35F5O2	959218-78-1	90
5		Pentadecafluorooctanoic acid, oc...	666	C26H37F15O2	1000406-04-8	90



Data Path : Z:\svoasrv\HPCHEM1\BNA_G\Data\BG100821\
Data File : BG050522.D
Acq On : 8 Oct 2021 23:47
Operator : CG/JU
Sample : M4081-01
Misc :
ALS Vial : 11 Sample Multiplier: 1

Instrument :
BNA_G
ClientSampleId :
356

Quant Method : Z:\svoasrv\HPCHEM1\BNA_G\Methods\8270-BG100621.M
Quant Title : ASP BNA STANDARDS FOR 5 POINT CALIBRATION

TIC Library : C:\Database\NIST20.L
TIC Integration Parameters: LSCINT.P

TIC Top Hit name	RT	EstConc	Units	Response	--Internal Standard--			
					#	RT	Resp	Conc
Ethanol, 2-(2-b...	10.827	20.9	ng	661070	2	11.085	632704	20.0
2,4,7,9-Tetrame...	13.747	2.6	ng	111533	3	14.875	869130	20.0
9-Octadecenoic ...	19.417	2.5	ng	123993	4	17.619	999487	20.0
Pentadecafluoro...	21.514	2.7	ng	145056	5	21.920	1063200	20.0