

Data Path : Z:\HPCHEM1\BNA G\DATA\BG101015\
 Data File : BG019126.D
 Acq On : 10 Oct 2015 20:37
 Operator : UM/NP
 Sample : G3929-04
 Misc :
 ALS Vial : 14 Sample Multiplier: 1

Instrument :
 BNA_G
 ClientSampleId :
 MW-02

Quant Time: Oct 12 06:38:01 2015
 Quant Method : Z:\HPCHEM1\BNA G\METHODS\8270-BG101015.M
 Quant Title : ASP BNA STANDARDS FOR 5 POINT CALIBRATION
 QLast Update : Mon Oct 12 06:30:50 2015
 Response via : Initial Calibration

Internal Standards	R.T.	QIon	Response	Conc	Units	Dev(Min)
1) 1,4-Dichlorobenzene-d4	8.03	152	17313	20.00	ng	0.00
21) Naphthalene-d8	10.83	136	78456	20.00	ng	0.00
38) Acenaphthene-d10	14.66	164	56509	20.00	ng	0.00
63) Phenanthrene-d10	17.40	188	143575	20.00	ng	0.00
75) Chrysene-d12	21.67	240	175391	20.00	ng	0.00
86) Perylene-d12	24.89	264	167359	20.00	ng	-0.01

System Monitoring Compounds

5) 2-Fluorophenol	5.60	112	59217	69.64	ng	0.00
7) Phenol-d6	7.19	99	54329	41.59	ng	0.00
23) Nitrobenzene-d5	9.19	82	158408	111.56	ng	0.00
41) 2,4,6-Tribromophenol	16.15	330	130390	169.33	ng	0.00
44) 2-Fluorobiphenyl	13.28	172	405105	110.23	ng	0.00
78) Terphenyl-d14	20.02	244	645903	97.28	ng	0.00

Target Compounds

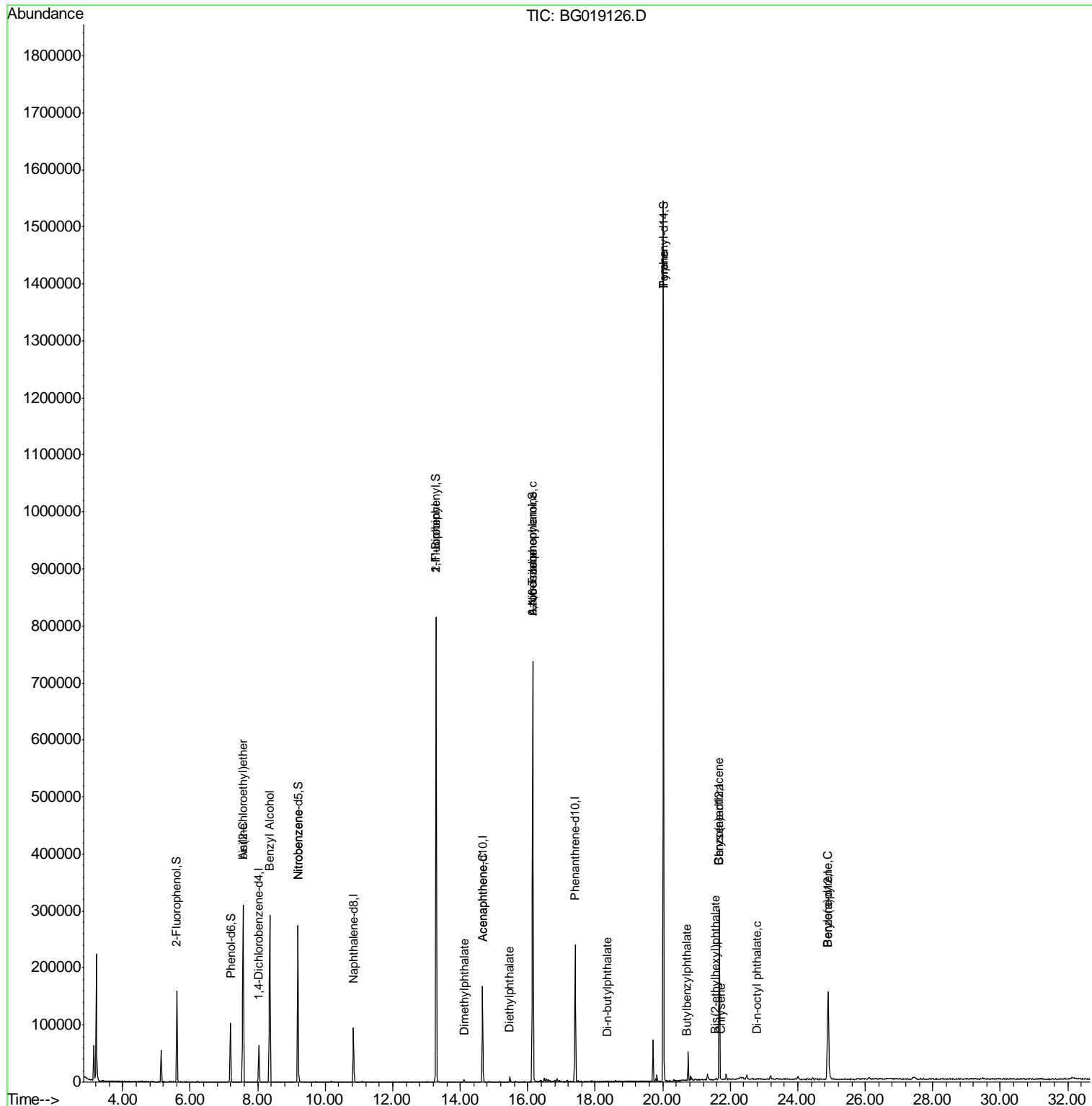
Target Compounds	R.T.	QIon	Response	Conc	Units	Qvalue
6) Aniline	7.57	93	110	0.06	ng	# 1
11) bis(2-Chloroethyl)ether	7.57	93	110	0.11	ng	# 1
15) Benzyl Alcohol	8.36	79	2498	2.14	ng	# 49
24) Nitrobenzene	9.19	77	456	0.30	ng	# 43
45) 1,1'-Biphenyl	13.29	154	781	0.19	ng	# 1
49) Dimethylphthalate	14.11	163	2774	0.62	ng	# 95
51) Acenaphthene	14.66	154	83	0.02	ng	# 3
59) Diethylphthalate	15.47	149	5159	1.11	ng	# 93
62) Azobenzene	16.15	77	731	0.17	ng	# 22
65) n-Nitrosodiphenylamine	16.15	169	4512	1.14	ng	# 46
73) Di-n-butylphthalate	18.37	149	502	0.06	ng	# 77
77) Pyrene	20.02	202	2722	0.28	ng	# 66
79) Butylbenzylphthalate	20.70	149	179	0.04	ng	# 41
80) Benzo(a)anthracene	21.67	228	608	0.06	ng	# 52
82) Chrysene	21.72	228	85	0.01	ng	# 48
83) Bis(2-ethylhexyl)phthalate	21.57	149	927	0.17	ng	# 94
84) Di-n-octyl phthalate	22.78	149	114	0.01	ng	# 1
89) Benzo(a)pyrene	24.89	252	624	0.07	ng	# 61

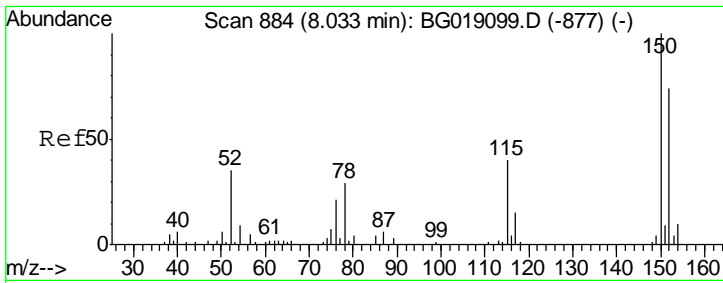
(#) = qualifier out of range (m) = manual integration (+) = signals summed

Data Path : Z:\HPCHEM1\BNA G\DATA\BG101015\
 Data File : BG019126.D
 Acq On : 10 Oct 2015 20:37
 Operator : UM/NP
 Sample : G3929-04
 Misc :
 ALS Vial : 14 Sample Multiplier: 1

Instrument :
 BNA_G
 ClientSampled :
 MW-02

Quant Time: Oct 12 06:38:01 2015
 Quant Method : Z:\HPCHEM1\BNA G\METHODS\8270-BG101015.M
 Quant Title : ASP BNA STANDARDS FOR 5 POINT CALIBRATION
 QLast Update : Mon Oct 12 06:30:50 2015
 Response via : Initial Calibration

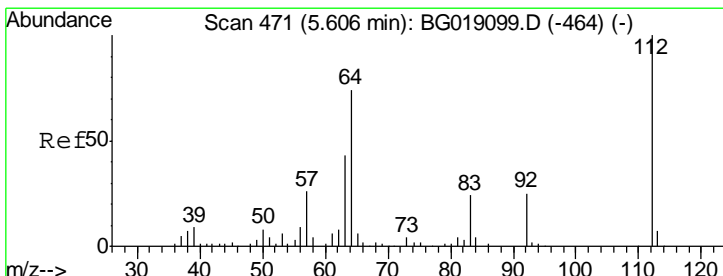
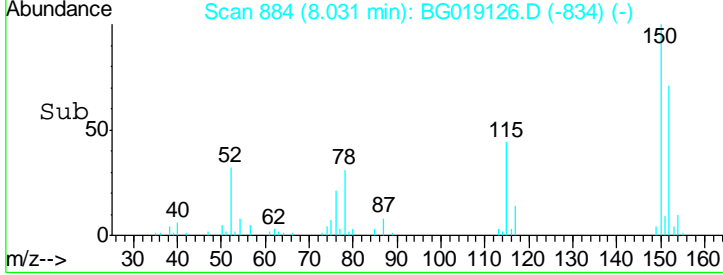
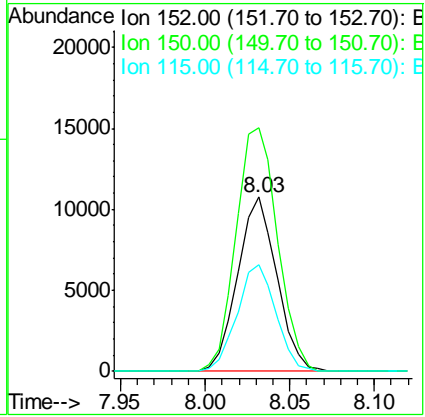
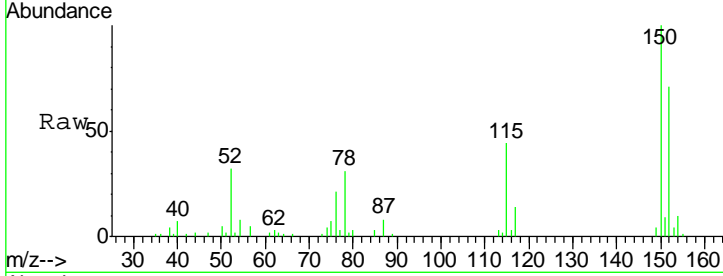




#1
 1,4-Dichlorobenzene-d4
 Concen: 20.00 ng
 RT: 8.03 min Scan# 884
 Delta R.T. -0.01 min
 Lab File: BG019126.D
 Acq: 10 Oct 2015 20:37

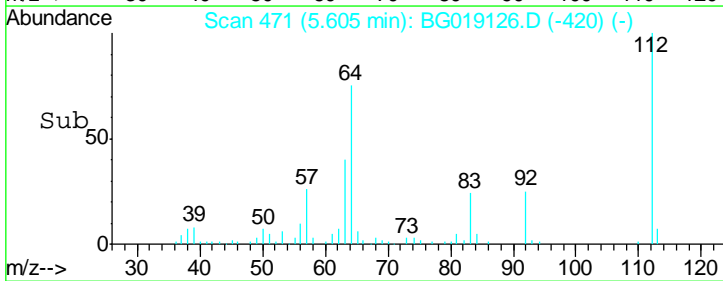
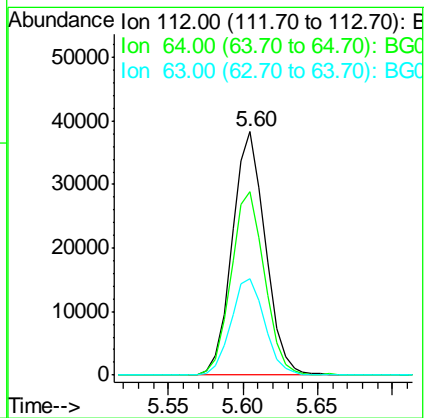
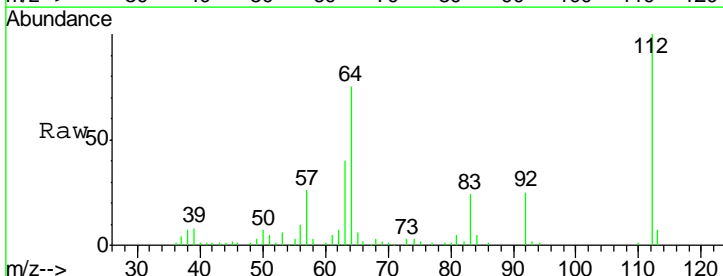
Instrument :
 BNA_G
ClientSampled :
 MW-02

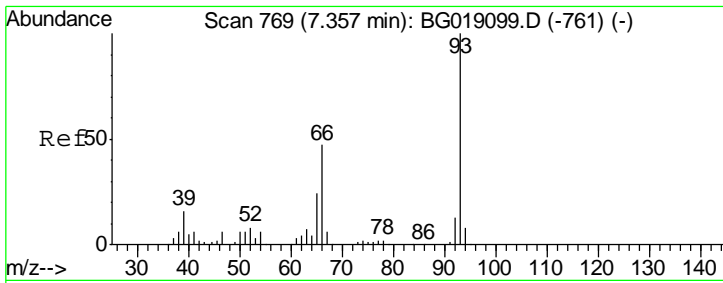
Tgt Ion	Resp	Lower	Upper
152	17313		
150	140.0	108.2	162.2
115	61.5	43.2	64.8



#5
 2-Fluorophenol
 Concen: 69.64 ng
 RT: 5.60 min Scan# 471
 Delta R.T. 0.00 min
 Lab File: BG019126.D
 Acq: 10 Oct 2015 20:37

Tgt Ion	Resp	Lower	Upper
112	59217		
64	75.2	59.0	88.4
63	39.7	34.7	52.1

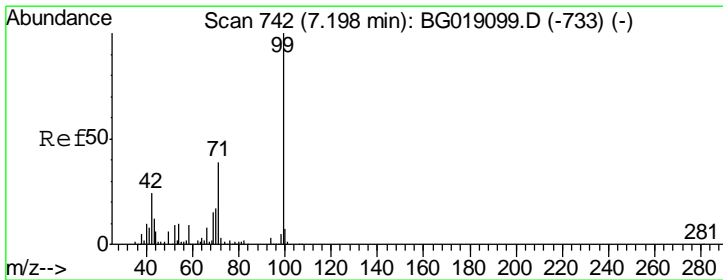
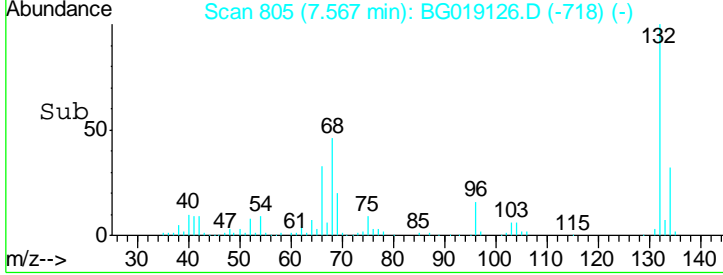
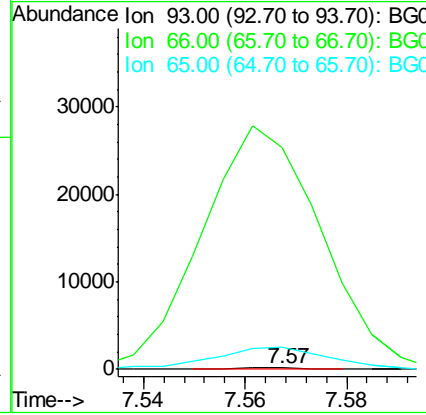
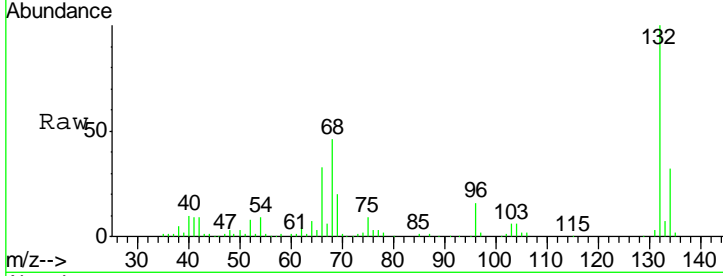




#6
 Aniline
 Concen: 0.06 ng
 RT: 7.57 min Scan# 805
 Delta R.T. 0.21 min
 Lab File: BG019126.D
 Acq: 10 Oct 2015 20:37

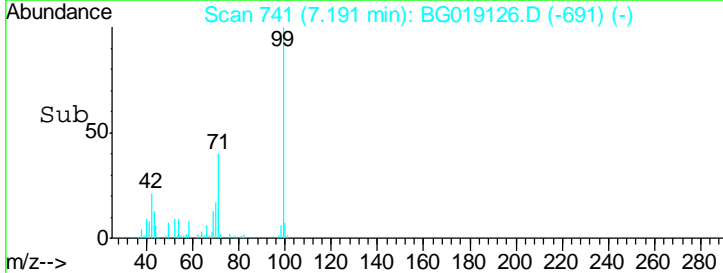
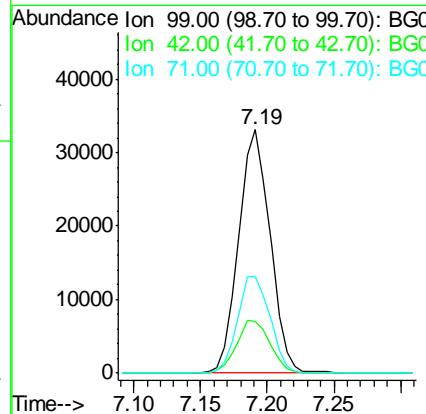
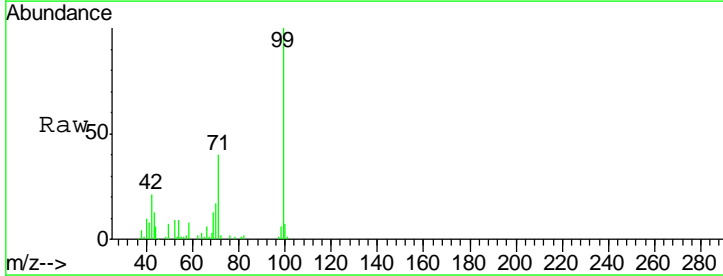
Instrument :
 BNA_G
 ClientSampled :
 MW-02

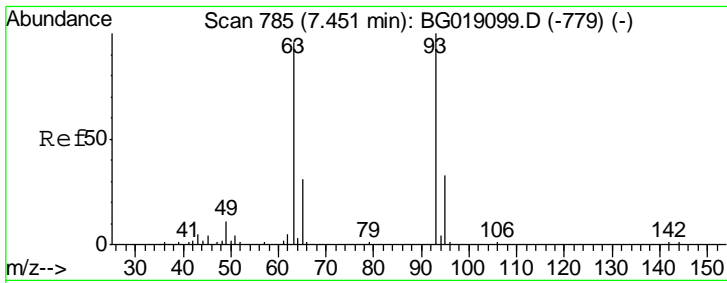
Tgt Ion	Resp	Lower	Upper
93	110		
66	15914.5	37.4	56.2#
65	1591.8	19.6	29.4#



#7
 Phenol-d6
 Concen: 41.59 ng
 RT: 7.19 min Scan# 741
 Delta R.T. -0.01 min
 Lab File: BG019126.D
 Acq: 10 Oct 2015 20:37

Tgt Ion	Resp	Lower	Upper
99	54329		
42	21.2	19.5	29.3
71	39.6	31.4	47.0

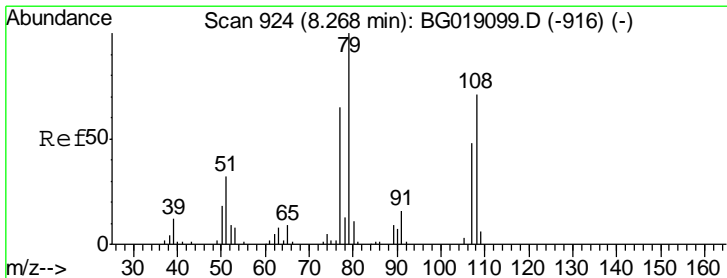
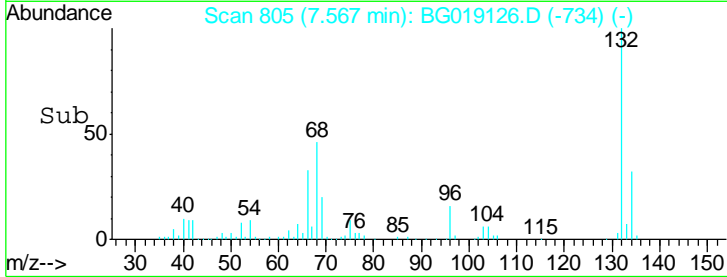
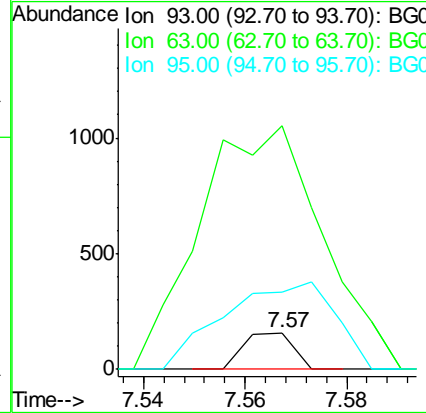
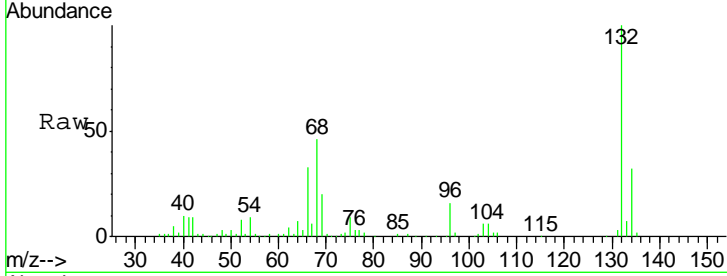




#11
 bis(2-Chloroethyl)ether
 Concen: 0.11 ng
 RT: 7.57 min Scan# 805
 Delta R.T. 0.12 min
 Lab File: BG019126.D
 Acq: 10 Oct 2015 20:37

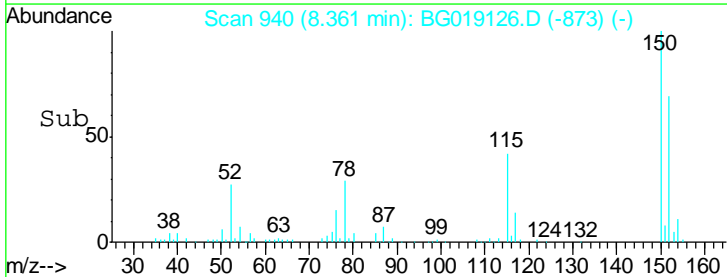
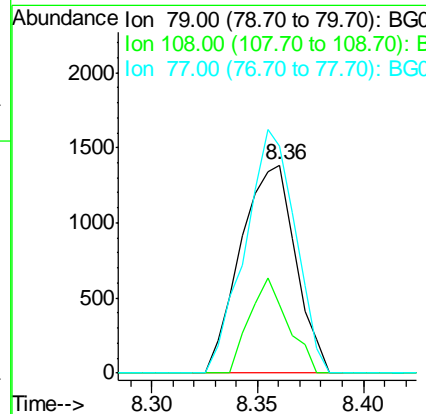
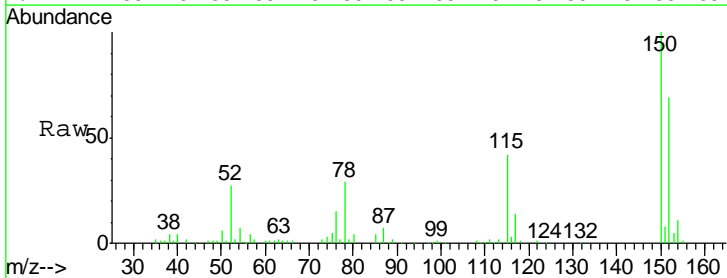
Instrument :
 BNA_G
 ClientSampled :
 MW-02

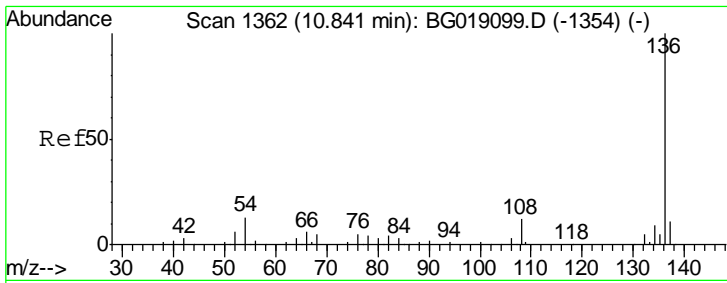
Tgt Ion	Resp	Lower	Upper
93	110		
93	100		
63	661.6	75.3	115.3#
95	208.2	12.9	52.9#



#15
 Benzyl Alcohol
 Concen: 2.14 ng
 RT: 8.36 min Scan# 940
 Delta R.T. 0.09 min
 Lab File: BG019126.D
 Acq: 10 Oct 2015 20:37

Tgt Ion	Resp	Lower	Upper
79	2498		
79	100		
108	32.5	56.6	84.8#
77	109.2	51.6	77.4#

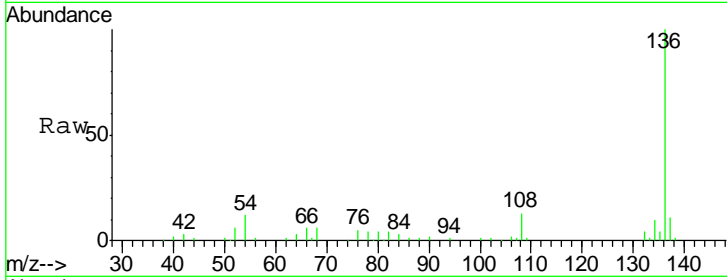




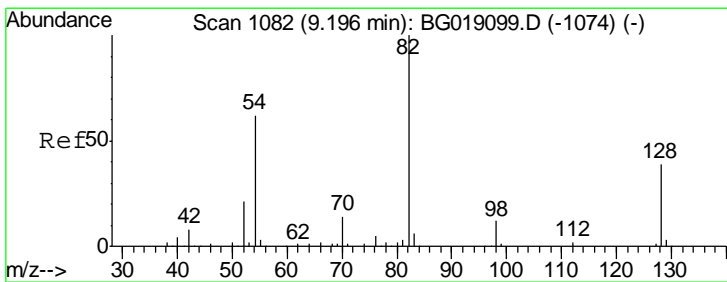
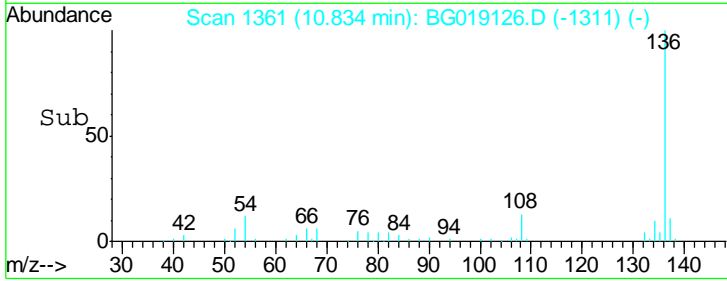
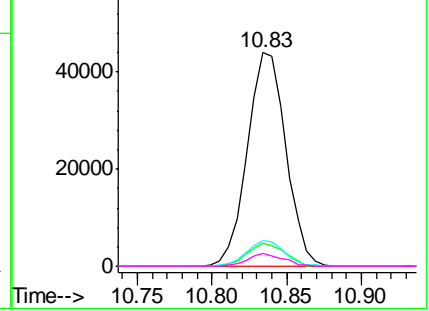
#21
 Naphthalene-d8
 Concen: 20.00 ng
 RT: 10.83 min Scan# 1361
 Delta R.T. -0.01 min
 Lab File: BG019126.D
 Acq: 10 Oct 2015 20:37

Instrument :
 BNA_G
 ClientSampled :
 MW-02

Tgt Ion	Resp	Lower	Upper
136	100		
137	10.6	9.0	13.4
54	11.8	10.1	15.1
68	5.9	4.4	6.6

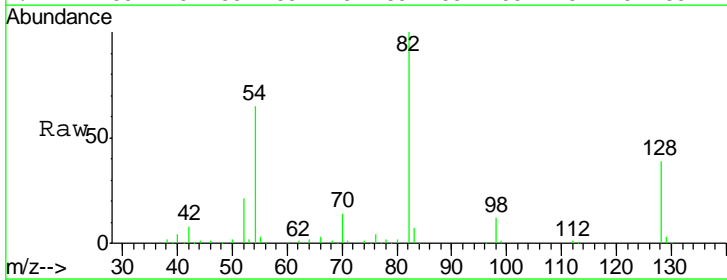


Abundance Ion 136.00 (135.70 to 136.70): BGC
 Ion 137.00 (136.70 to 137.70): BGC
 Ion 54.00 (53.70 to 54.70): BGC
 Ion 68.00 (67.70 to 68.70): BGC

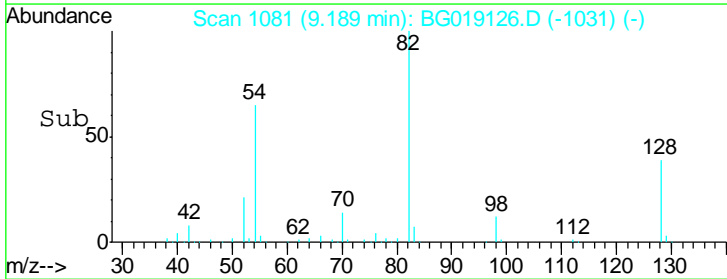
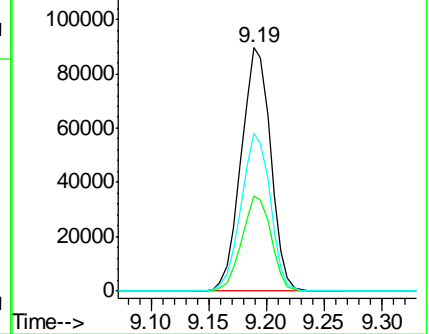


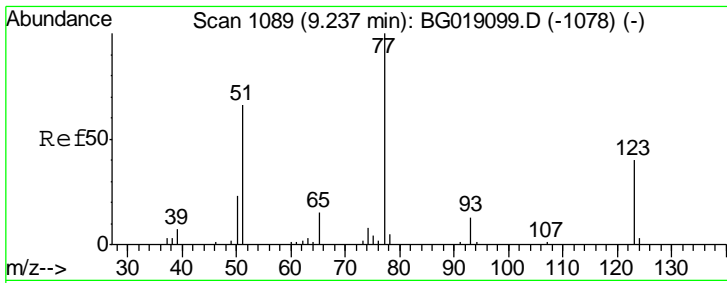
#23
 Nitrobenzene-d5
 Concen: 111.56 ng
 RT: 9.19 min Scan# 1081
 Delta R.T. -0.01 min
 Lab File: BG019126.D
 Acq: 10 Oct 2015 20:37

Tgt Ion	Resp	Lower	Upper
82	100		
128	39.3	31.4	47.2
54	64.7	50.0	75.0



Abundance Ion 82.00 (81.70 to 82.70): BGC
 Ion 128.00 (127.70 to 128.70): BGC
 Ion 54.00 (53.70 to 54.70): BGC

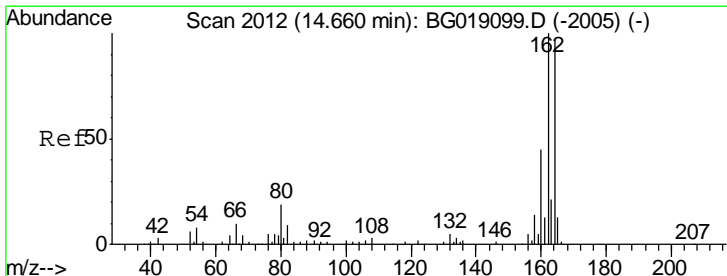
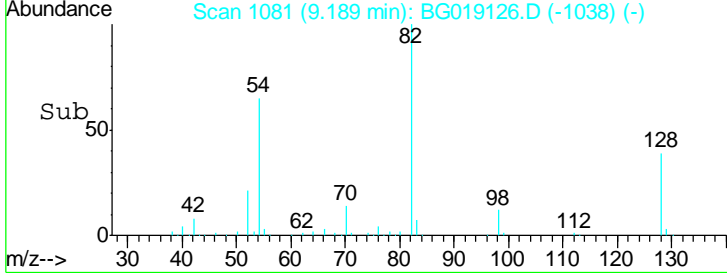
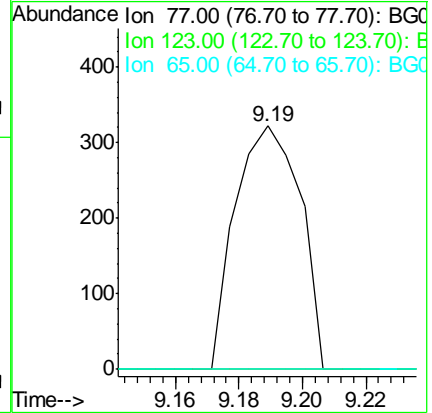
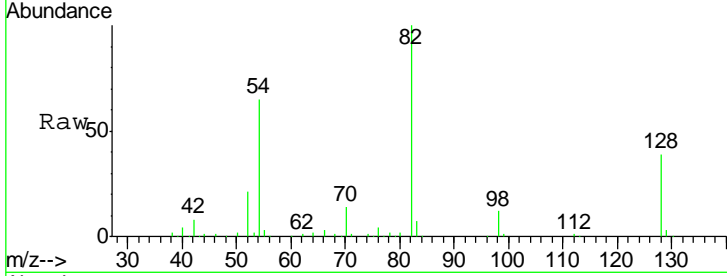




#24
 Nitrobenzene
 Concen: 0.30 ng
 RT: 9.19 min Scan# 1081
 Delta R.T. -0.05 min
 Lab File: BG019126.D
 Acq: 10 Oct 2015 20:37

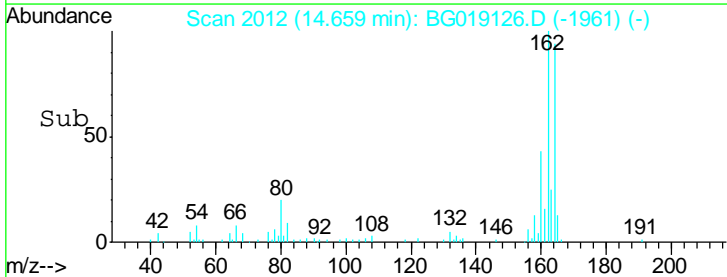
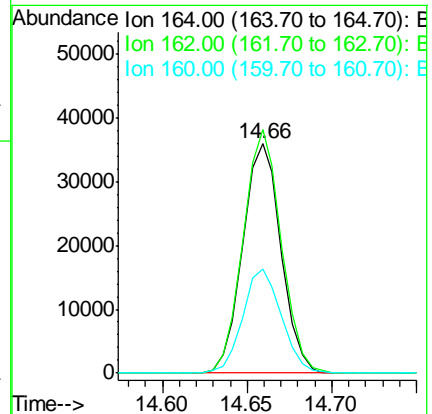
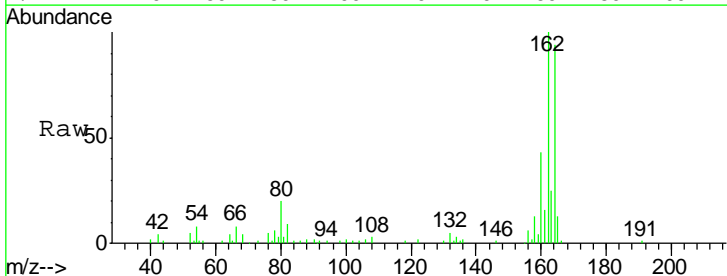
Instrument :
 BNA_G
ClientSampled :
 MW-02

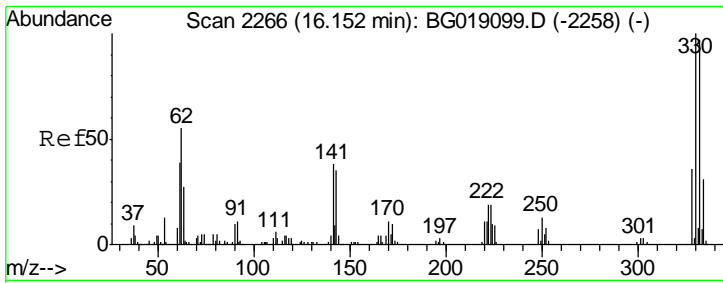
Tgt Ion	Ratio	Lower	Upper
77	100		
123	0.0	31.8	47.6#
65	0.0	11.8	17.6#



#38
 Acenaphthene-d10
 Concen: 20.00 ng
 RT: 14.66 min Scan# 2012
 Delta R.T. 0.00 min
 Lab File: BG019126.D
 Acq: 10 Oct 2015 20:37

Tgt Ion	Ratio	Lower	Upper
164	100		
162	106.2	82.6	124.0
160	45.3	36.9	55.3

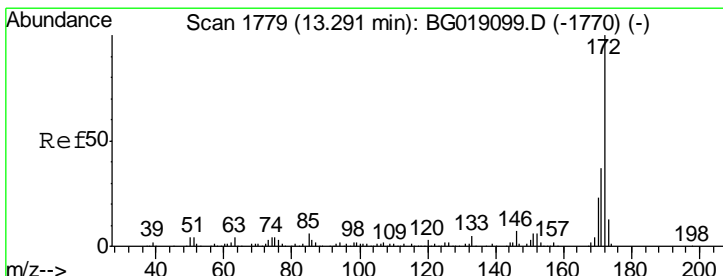
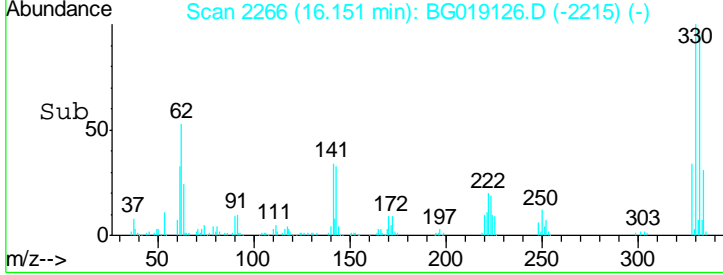
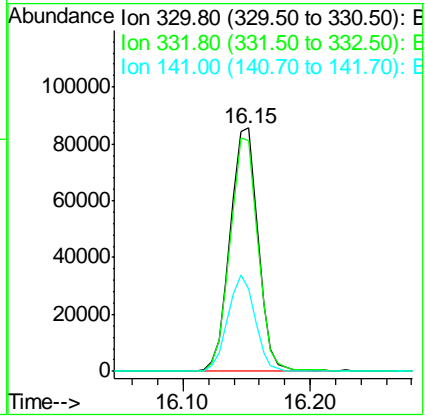
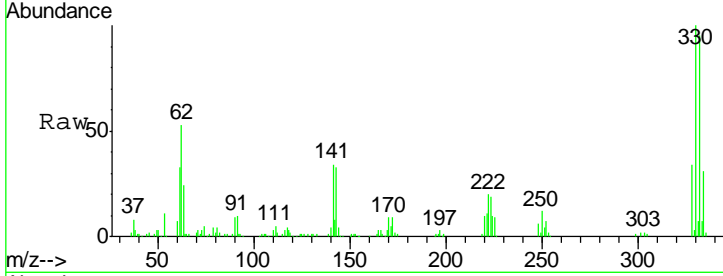




#41
 2,4,6-Tribromophenol
 Concen: 169.33 ng
 RT: 16.15 min Scan# 2266
 Delta R.T. 0.00 min
 Lab File: BG019126.D
 Acq: 10 Oct 2015 20:37

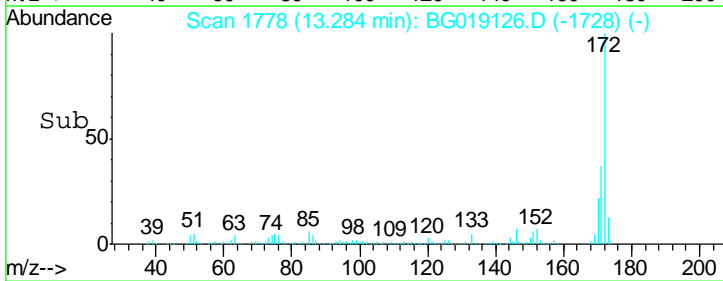
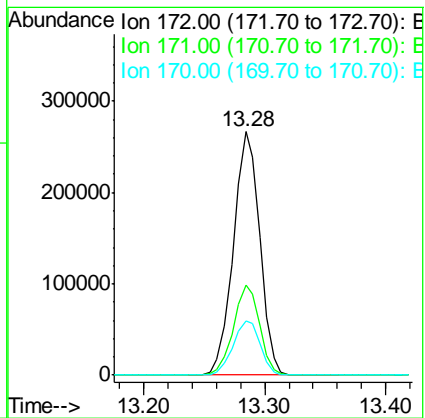
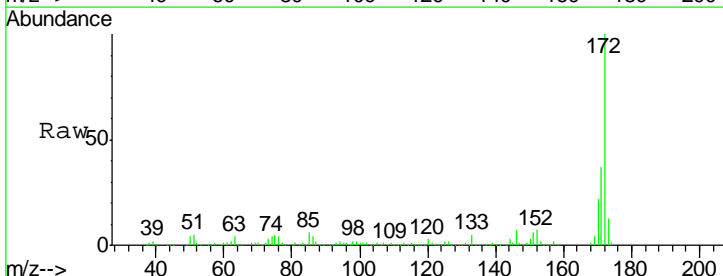
Instrument :
 BNA_G
 ClientSampled :
 MW-02

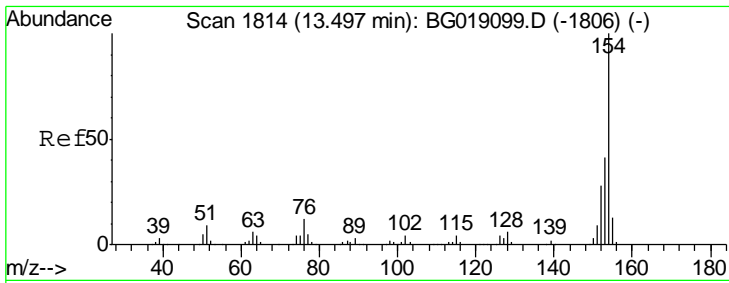
Tgt Ion	Resp	Lower	Upper
330	100		
332	95.7	77.3	115.9
141	38.2	30.7	46.1



#44
 2-Fluorobiphenyl
 Concen: 110.23 ng
 RT: 13.28 min Scan# 1778
 Delta R.T. -0.01 min
 Lab File: BG019126.D
 Acq: 10 Oct 2015 20:37

Tgt Ion	Resp	Lower	Upper
172	100		
171	37.0	29.9	44.9
170	22.2	18.6	27.8

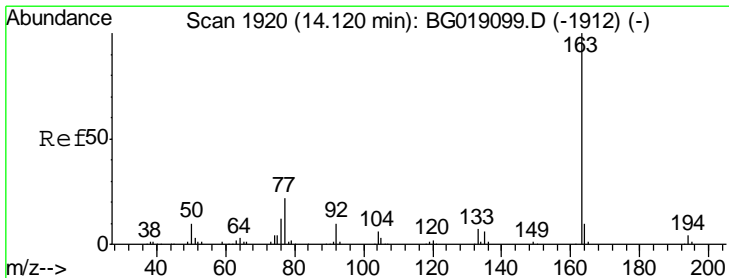
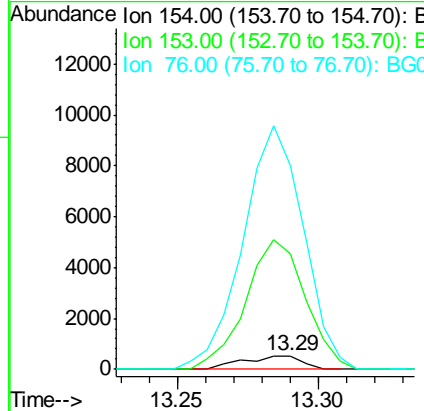
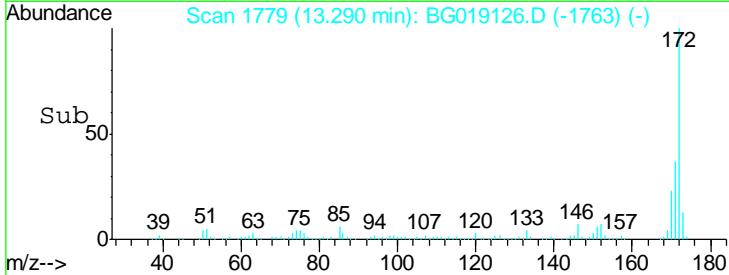
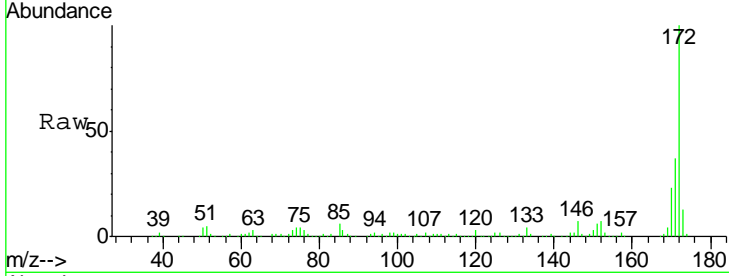




#45
 1,1'-Biphenyl
 Concen: 0.19 ng
 RT: 13.29 min Scan# 1779
 Delta R.T. -0.21 min
 Lab File: BG019126.D
 Acq: 10 Oct 2015 20:37

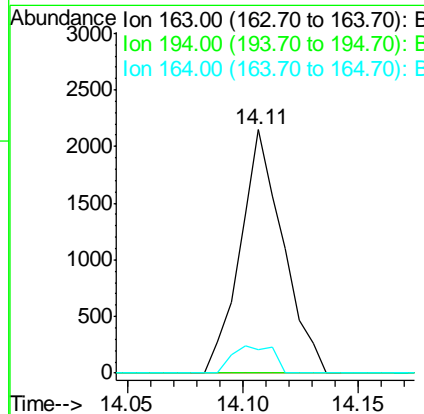
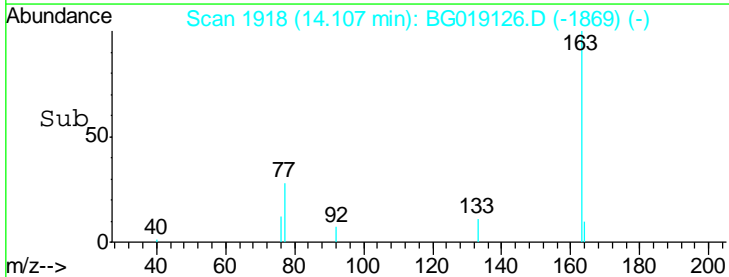
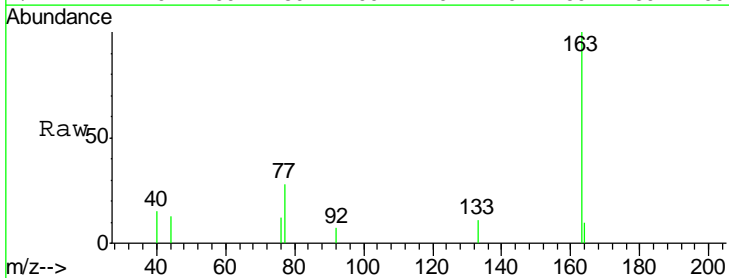
Instrument :
 BNA_G
 ClientSampled :
 MW-02

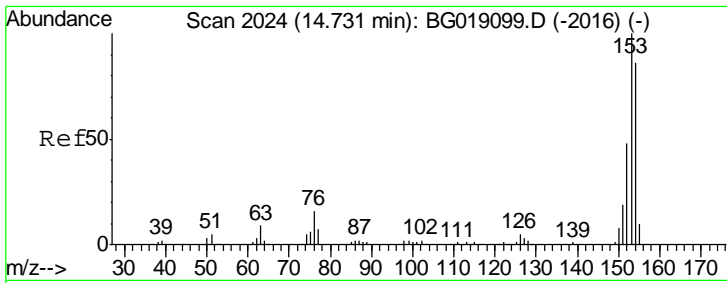
Tgt Ion	Resp	Lower	Upper
154	100		
153	859.9	20.6	60.6#
76	1508.7	0.0	32.2#



#49
 Dimethylphthalate
 Concen: 0.62 ng
 RT: 14.11 min Scan# 1918
 Delta R.T. -0.01 min
 Lab File: BG019126.D
 Acq: 10 Oct 2015 20:37

Tgt Ion	Resp	Lower	Upper
163	100		
194	0.0	3.2	4.8#
164	9.5	8.1	12.1

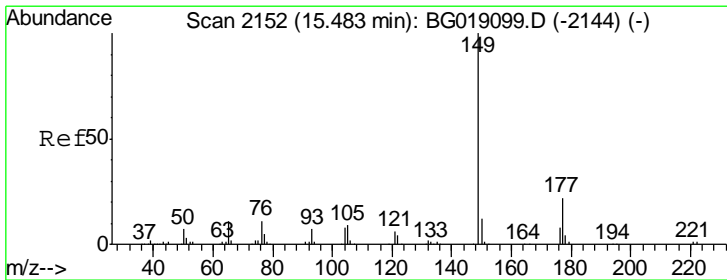
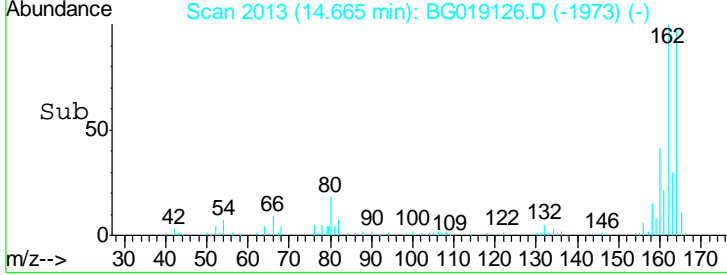
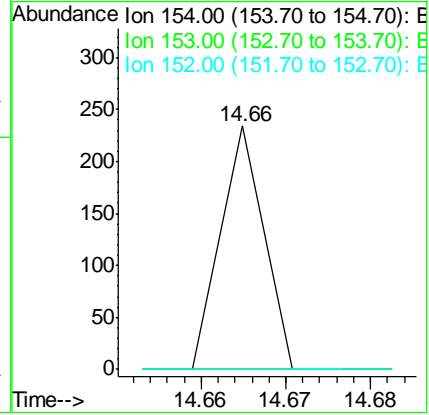
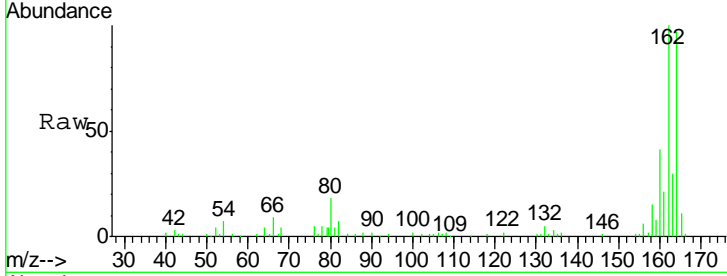




#51
 Acenaphthene
 Concen: 0.02 ng
 RT: 14.66 min Scan# 2013
 Delta R.T. -0.06 min
 Lab File: BG019126.D
 Acq: 10 Oct 2015 20:37

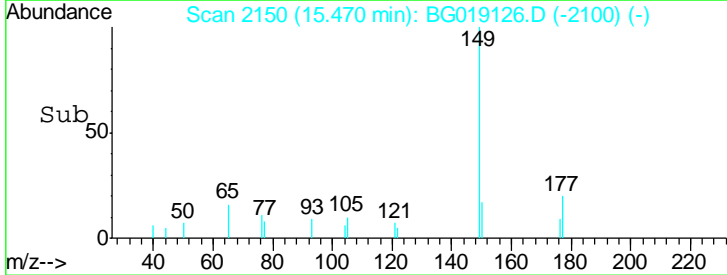
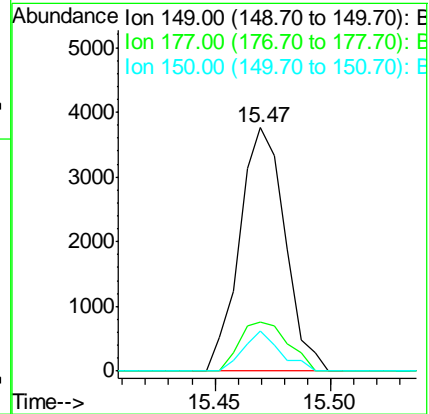
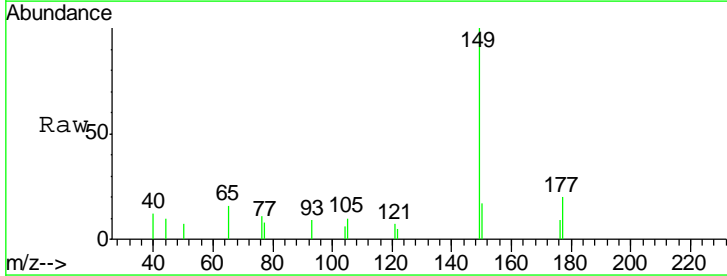
Instrument :
 BNA_G
 ClientSampled :
 MW-02

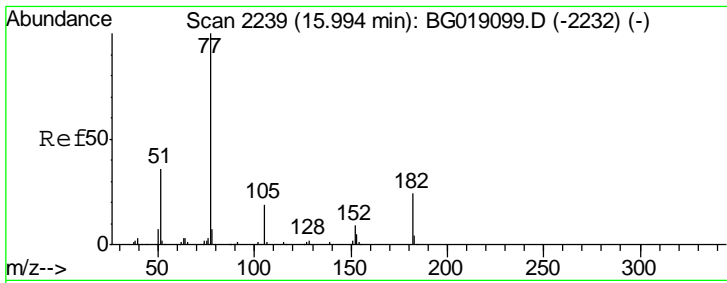
Tgt Ion	Resp	Lower	Upper
154	100		
153	0.0	93.4	140.2#
152	0.0	44.9	67.3#



#59
 Diethylphthalate
 Concen: 1.11 ng
 RT: 15.47 min Scan# 2150
 Delta R.T. -0.01 min
 Lab File: BG019126.D
 Acq: 10 Oct 2015 20:37

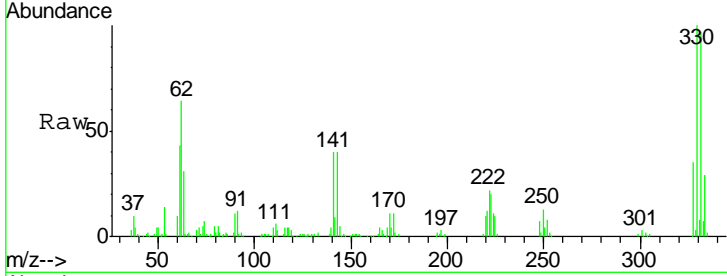
Tgt Ion	Resp	Lower	Upper
149	100		
177	19.9	17.7	26.5
150	16.5	9.4	14.2#



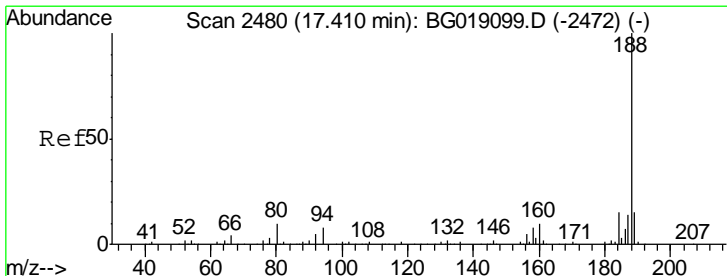
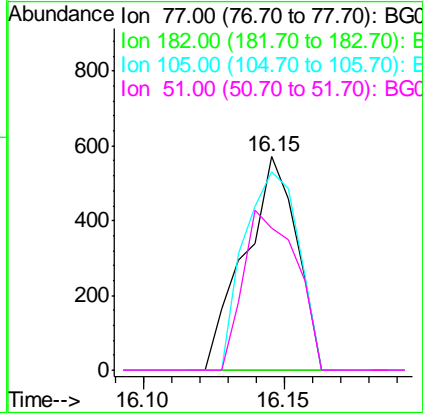
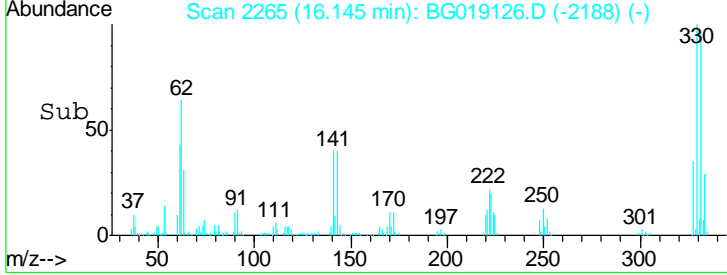


#62
 Azobenzene
 Concen: 0.17 ng
 RT: 16.15 min Scan# 2265
 Delta R.T. 0.15 min
 Lab File: BG019126.D
 Acq: 10 Oct 2015 20:37

Instrument :
 BNA_G
 ClientSampled :
 MW-02

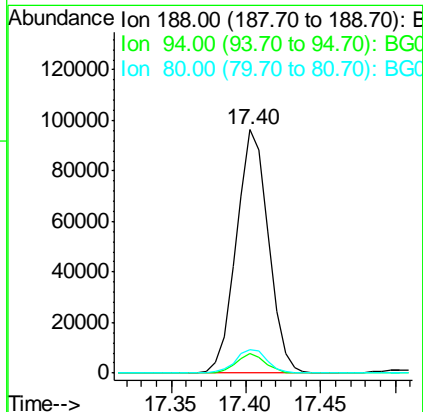
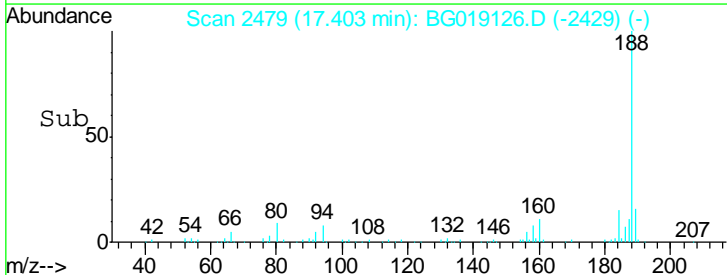
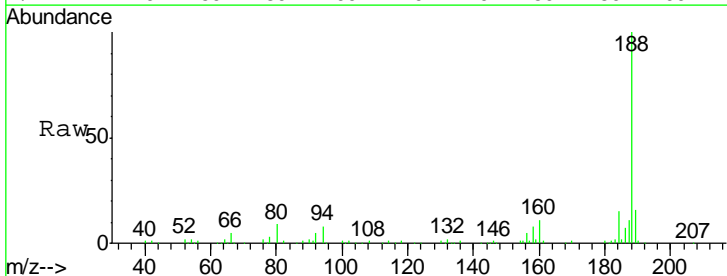


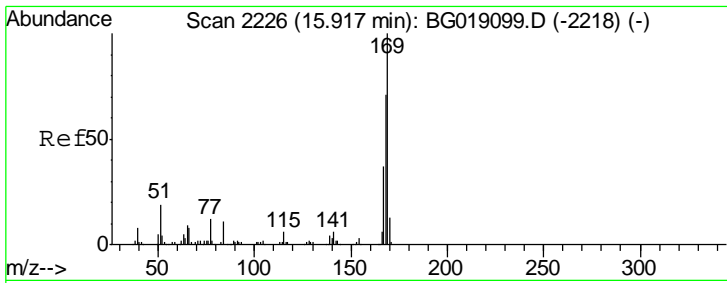
Tgt Ion	Resp	Lower	Upper
77	100		
182	0.0	4.4	44.4#
105	93.2	0.0	39.1#
51	66.7	15.9	55.9#



#63
 Phenanthrene-d10
 Concen: 20.00 ng
 RT: 17.40 min Scan# 2479
 Delta R.T. -0.01 min
 Lab File: BG019126.D
 Acq: 10 Oct 2015 20:37

Tgt Ion	Resp	Lower	Upper
188	100		
94	7.9	6.4	9.6
80	9.4	7.6	11.4

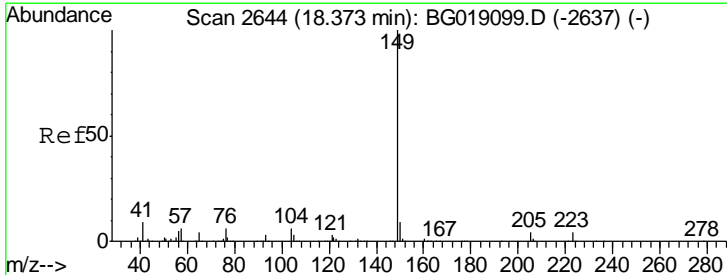
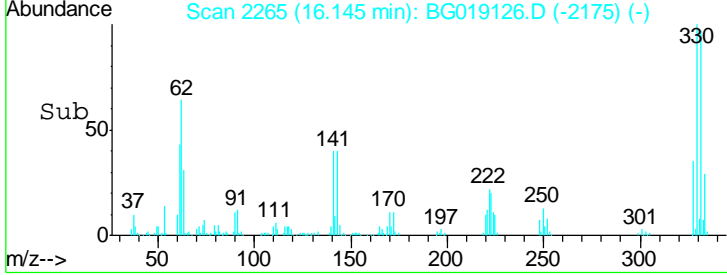
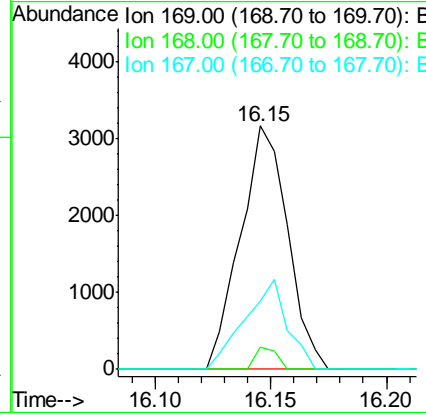
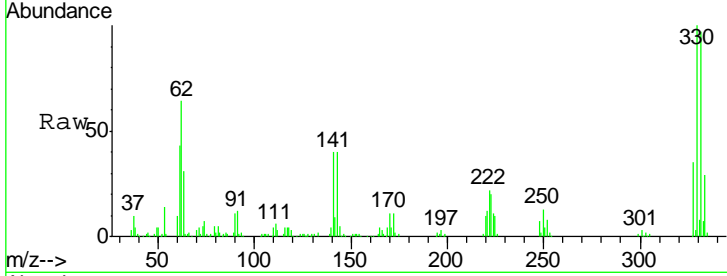




#65
 n-Nitrosodiphenylamine
 Concen: 1.14 ng
 RT: 16.15 min Scan# 2265
 Delta R.T. 0.23 min
 Lab File: BG019126.D
 Acq: 10 Oct 2015 20:37

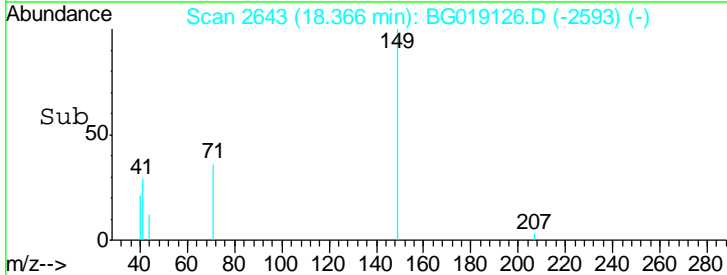
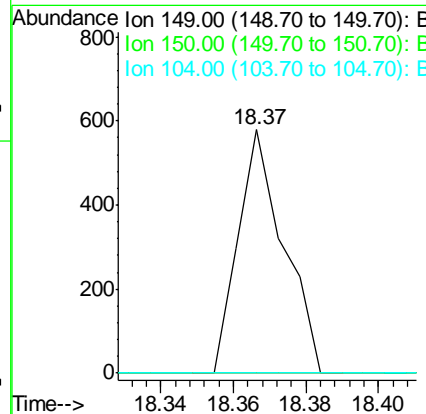
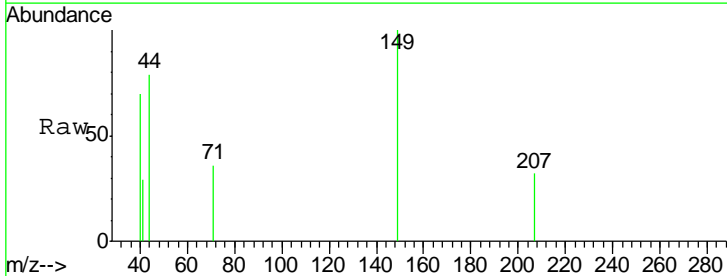
Instrument :
 BNA_G
 ClientSampled :
 MW-02

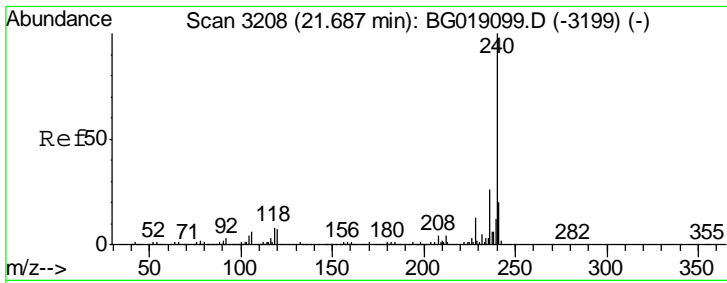
Tgt Ion	Resp	Lower	Upper
169	100		
168	8.9	56.6	84.8#
167	27.9	30.0	45.0#



#73
 Di-n-butylphthalate
 Concen: 0.06 ng
 RT: 18.37 min Scan# 2643
 Delta R.T. -0.01 min
 Lab File: BG019126.D
 Acq: 10 Oct 2015 20:37

Tgt Ion	Resp	Lower	Upper
149	100		
150	0.0	7.5	11.3#
104	0.0	5.0	7.6#

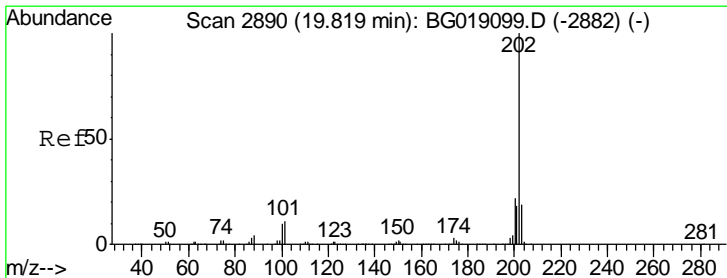
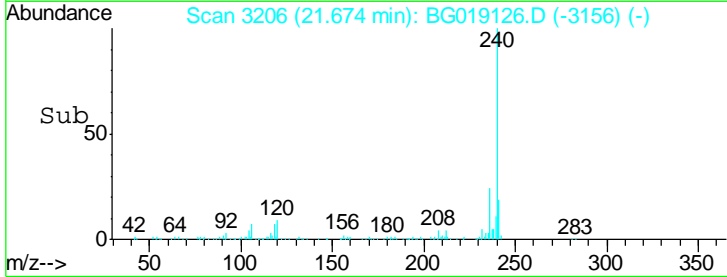
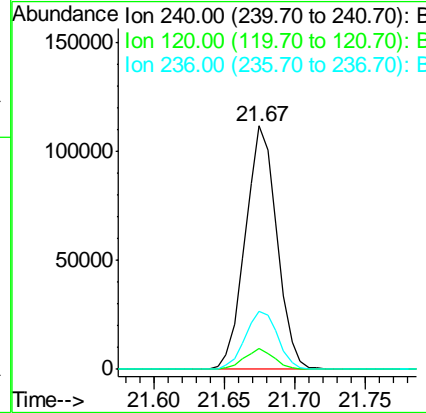
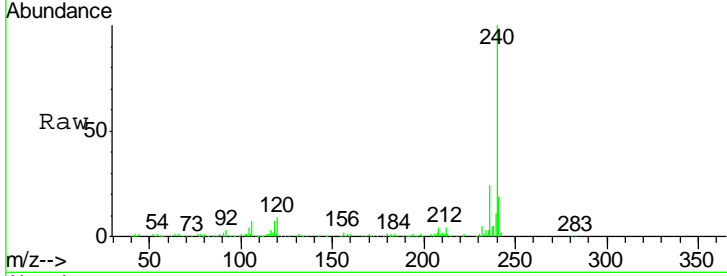




#75
 Chrysene-d12
 Concen: 20.00 ng
 RT: 21.67 min Scan# 3206
 Delta R.T. -0.01 min
 Lab File: BG019126.D
 Acq: 10 Oct 2015 20:37

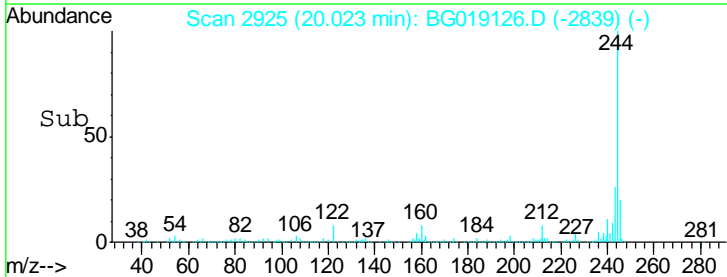
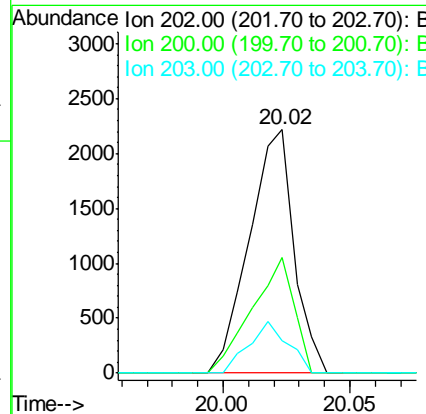
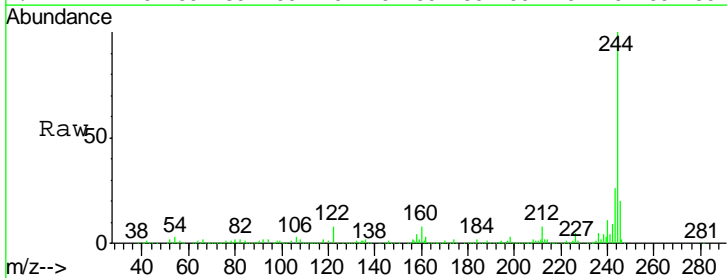
Instrument :
 BNA_G
 ClientSampled :
 MW-02

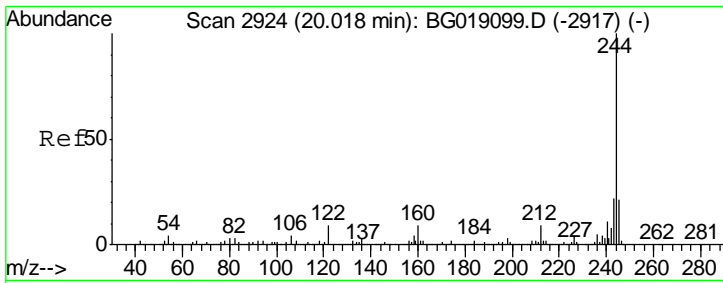
Tgt Ion	Resp	Lower	Upper
240	175391		
120	8.7	5.8	8.6#
236	23.8	21.2	31.8



#77
 Pyrene
 Concen: 0.28 ng
 RT: 20.02 min Scan# 2925
 Delta R.T. 0.21 min
 Lab File: BG019126.D
 Acq: 10 Oct 2015 20:37

Tgt Ion	Resp	Lower	Upper
202	2722		
200	47.5	17.4	26.2#
203	13.5	14.8	22.2#

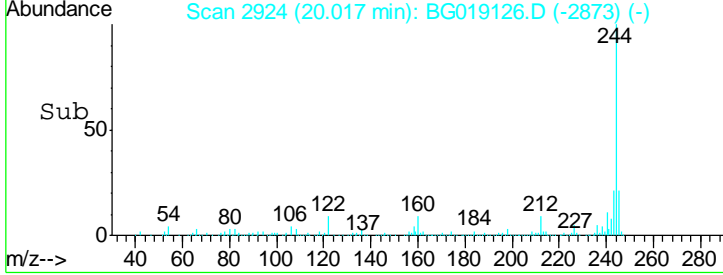
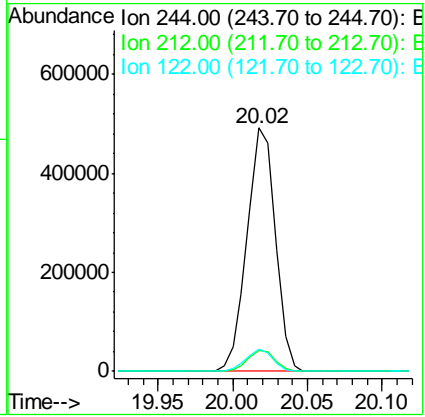
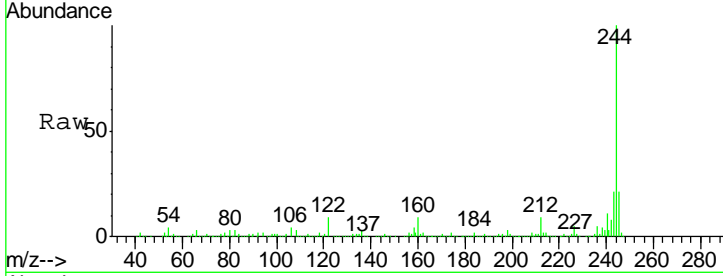




#78
 Terphenyl-d14
 Concen: 97.28 ng
 RT: 20.02 min Scan# 2924
 Delta R.T. 0.00 min
 Lab File: BG019126.D
 Acq: 10 Oct 2015 20:37

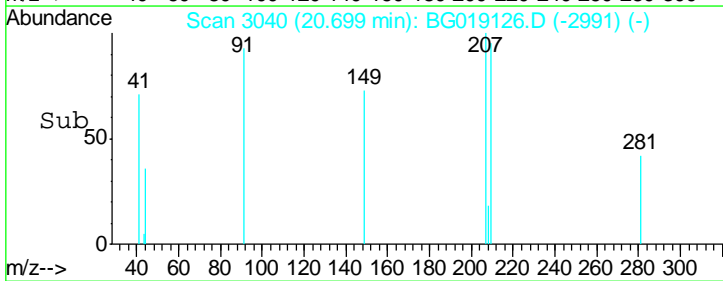
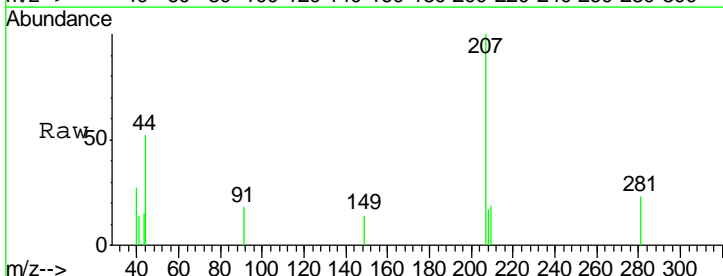
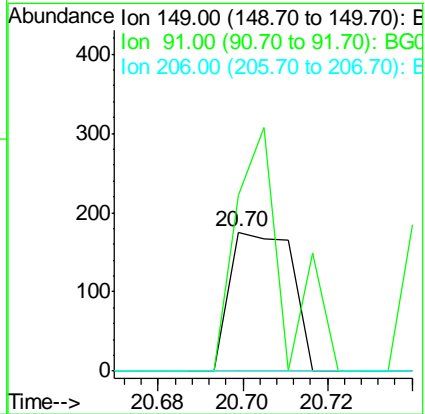
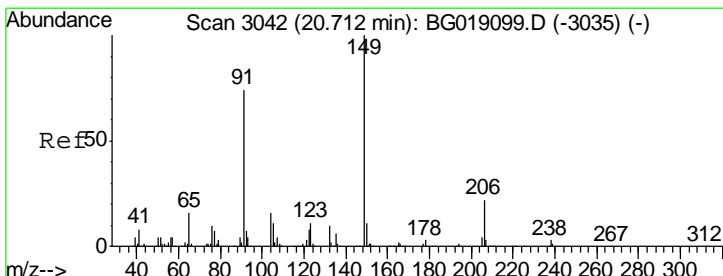
Instrument :
 BNA_G
ClientSampled :
 MW-02

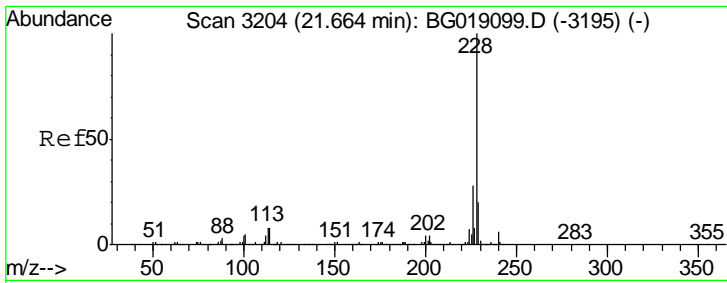
Tgt Ion	Resp	Lower	Upper
244	100		
212	8.7	6.8	10.2
122	9.1	7.4	11.2



#79
 Butylbenzylphthalate
 Concen: 0.04 ng
 RT: 20.70 min Scan# 3040
 Delta R.T. -0.01 min
 Lab File: BG019126.D
 Acq: 10 Oct 2015 20:37

Tgt Ion	Resp	Lower	Upper
149	100		
91	126.9	59.2	88.8#
206	0.0	17.5	26.3#

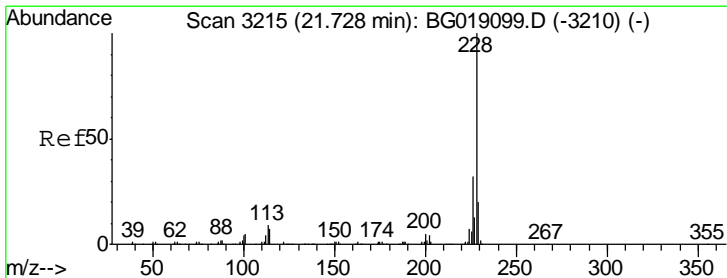
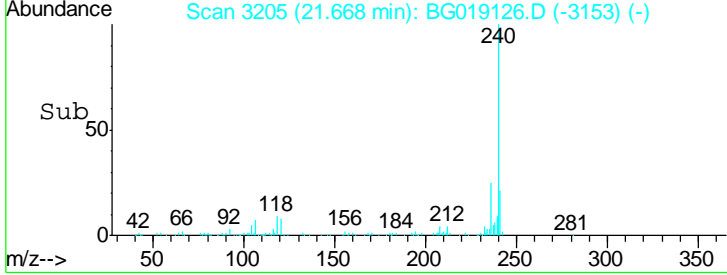
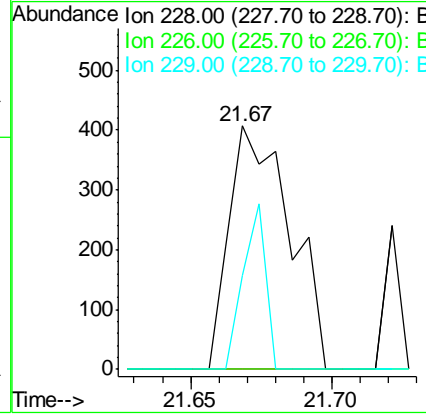
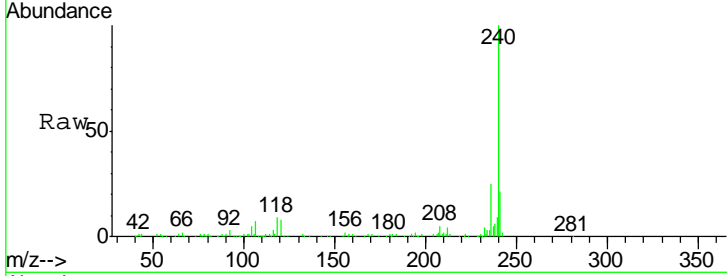




#80
 Benzo(a)anthracene
 Concen: 0.06 ng
 RT: 21.67 min Scan# 3205
 Delta R.T. 0.01 min
 Lab File: BG019126.D
 Acq: 10 Oct 2015 20:37

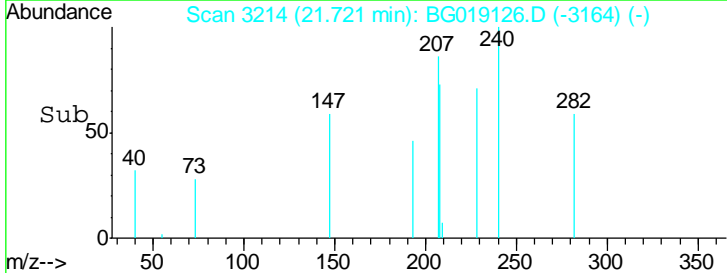
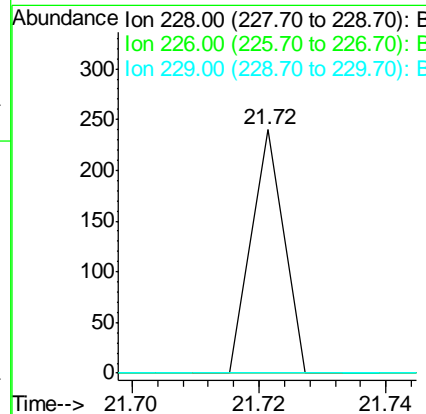
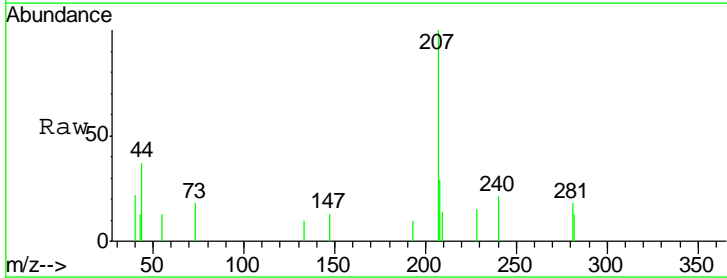
Instrument :
 BNA_G
 ClientSampled :
 MW-02

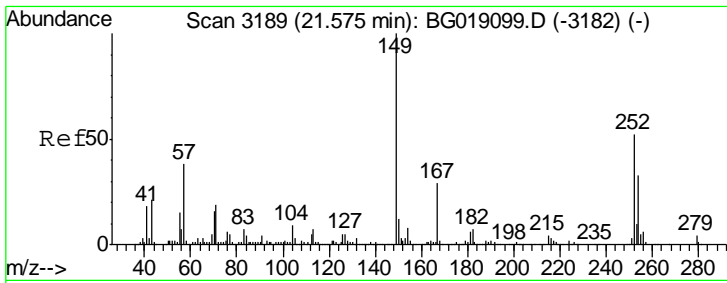
Tgt Ion	Resp	Lower	Upper
228	100		
226	0.0	22.4	33.6#
229	38.8	16.2	24.2#



#82
 Chrysene
 Concen: 0.01 ng
 RT: 21.72 min Scan# 3214
 Delta R.T. -0.01 min
 Lab File: BG019126.D
 Acq: 10 Oct 2015 20:37

Tgt Ion	Resp	Lower	Upper
228	100		
226	0.0	25.2	37.8#
229	0.0	16.3	24.5#

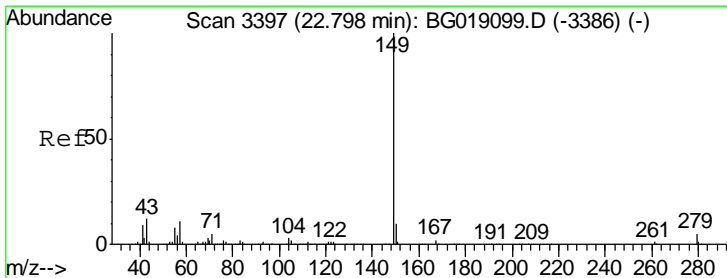
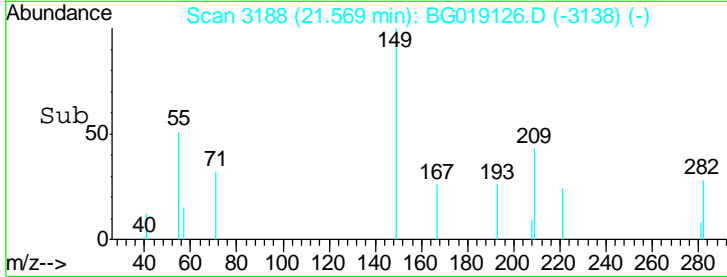
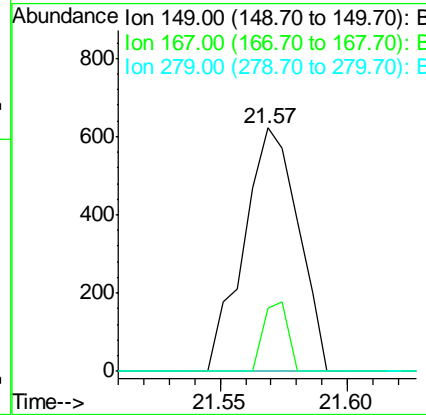
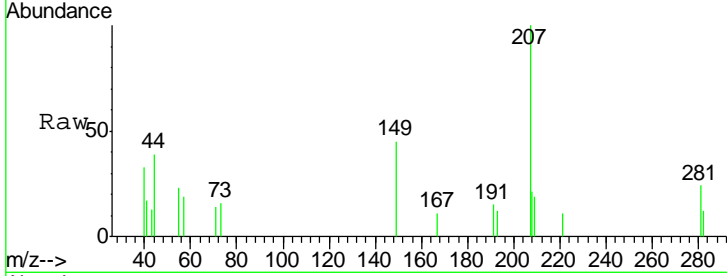




#83
 Bis(2-ethylhexyl)phthalate
 Concen: 0.17 ng
 RT: 21.57 min Scan# 3188
 Delta R.T. -0.01 min
 Lab File: BG019126.D
 Acq: 10 Oct 2015 20:37

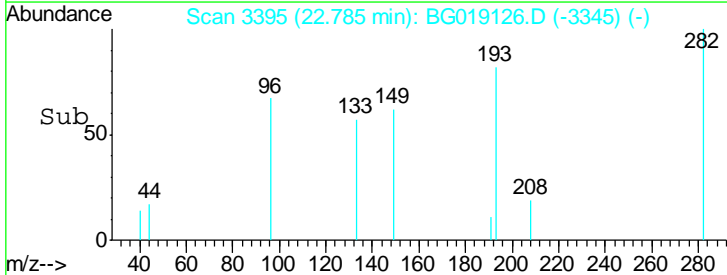
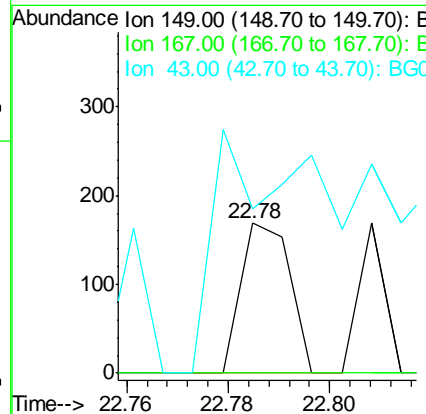
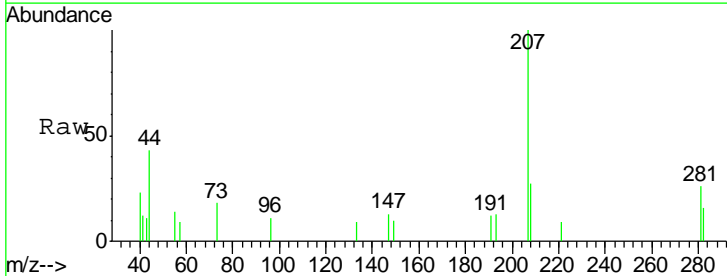
Instrument :
 BNA_G
 ClientSampled :
 MW-02

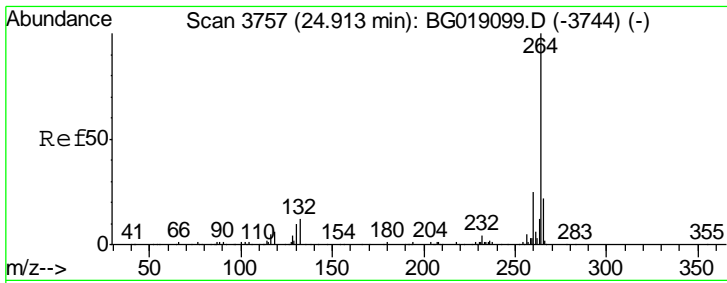
Tgt Ion	Resp	Lower	Upper
149	100		
167	25.7	22.8	34.2
279	0.0	3.6	5.4#



#84
 Di-n-octyl phthalate
 Concen: 0.01 ng
 RT: 22.78 min Scan# 3395
 Delta R.T. -0.01 min
 Lab File: BG019126.D
 Acq: 10 Oct 2015 20:37

Tgt Ion	Resp	Lower	Upper
149	100		
167	0.0	1.3	1.9#
43	207.9	10.1	15.1#

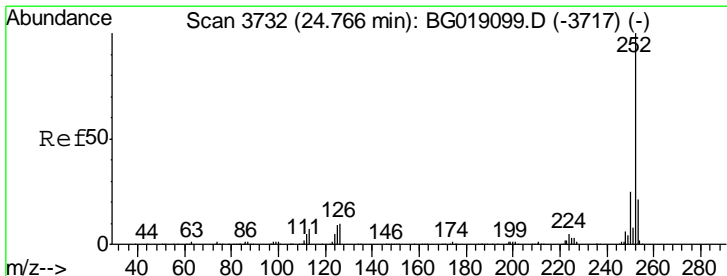
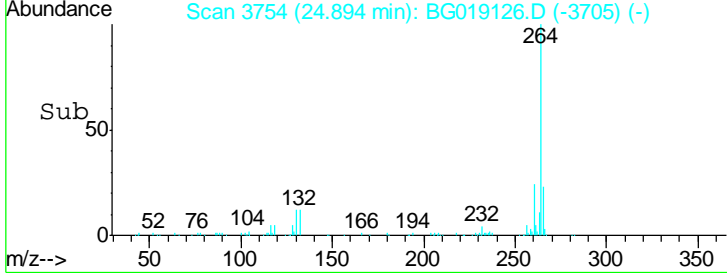
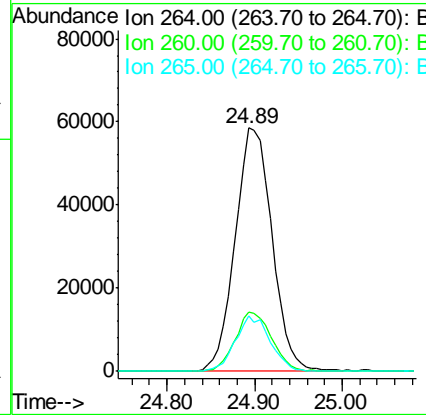
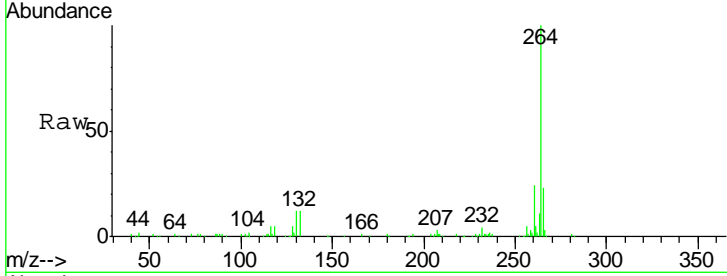




#86
 Perylene-d12
 Concen: 20.00 ng
 RT: 24.89 min Scan# 3754
 Delta R.T. -0.01 min
 Lab File: BG019126.D
 Acq: 10 Oct 2015 20:37

Instrument :
 BNA_G
 ClientSampled :
 MW-02

Tgt Ion	Resp	Lower	Upper
264	100		
260	24.4	20.1	30.1
265	23.0	17.2	25.8



#89
 Benzo(a)pyrene
 Concen: 0.07 ng
 RT: 24.89 min Scan# 3753
 Delta R.T. 0.14 min
 Lab File: BG019126.D
 Acq: 10 Oct 2015 20:37

Tgt Ion	Resp	Lower	Upper
252	100		
253	0.0	17.0	25.4#
125	0.0	7.2	10.8#

