

Data Path : Z:\HPCHEM1\BNA G\DATA\BG101016\
 Data File : BG024256.D
 Acq On : 11 Oct 2016 2:13
 Operator : UM/SJ
 Sample : H5098-13
 Misc :
 ALS Vial : 21 Sample Multiplier: 1

Instrument :
 BNA_G
 ClientSampled :
 BDNG1

Integration Parameters: LSCINT.P

Integrator: RTE
 Smoothing : ON
 Sampling : 1
 Start Thrs: 0.1
 Stop Thrs : 0

Filtering: 5
 Min Area: 0.1 % of largest Peak
 Max Peaks: 100
 Peak Location: TOP

If leading or trailing edge < 100 prefer < Baseline drop else tangent >
 Peak separation: 1

Method : Z:\HPCHEM1\BNA G\METHODS\SOM02.2-EPA-BG0100716.M
 Title : SVOA CALIBRATION

Signal : TIC

peak #	R.T. min	first scan	max scan	last scan	PK TY	peak height	corr. area	corr. % max.	% of total
1	4.538	287	289	294	rVB6	13450	10632	0.28%	0.030%
2	5.361	423	429	437	rVB	81030	156329	4.13%	0.440%
3	6.007	537	539	543	rBV5	9787	12297	0.32%	0.035%
4	6.131	558	560	561	rBV2	10792	10334	0.27%	0.029%
5	6.448	610	614	616	rVB4	8715	14165	0.37%	0.040%
6	6.595	636	639	641	rVB4	11654	12659	0.33%	0.036%
7	6.930	693	696	698	rVB4	9340	10930	0.29%	0.031%
8	6.953	698	700	705	rBV5	7335	9169	0.24%	0.026%
9	7.212	742	744	749	rVB6	15526	18677	0.49%	0.053%
10	7.423	772	780	788	rBV	267219	475371	12.56%	1.338%
11	7.605	805	811	821	rBV	205752	359963	9.51%	1.013%
12	7.694	824	826	831	rBV6	7334	12465	0.33%	0.035%
13	7.817	841	847	855	rVB3	267280	460496	12.17%	1.296%
14	7.976	872	874	879	rVB6	10825	14353	0.38%	0.040%
15	8.017	879	881	884	rBV3	10986	10308	0.27%	0.029%
16	8.070	887	890	892	rBV3	10666	11290	0.30%	0.032%
17	8.111	892	897	900	rBV6	9700	12946	0.34%	0.036%
18	8.293	921	928	939	rVB	684365	1195954	31.61%	3.366%
19	8.598	975	980	983	rBV5	8762	11815	0.31%	0.033%
20	8.763	1006	1008	1012	rVV4	11981	10086	0.27%	0.028%
21	8.816	1012	1017	1020	rVV7	7913	13615	0.36%	0.038%
22	8.980	1036	1045	1051	rBV2	275538	492038	13.00%	1.385%
23	9.198	1079	1082	1086	rBV5	9611	11595	0.31%	0.033%
24	9.315	1099	1102	1104	rBV4	7651	10828	0.29%	0.030%
25	9.468	1121	1128	1134	rBV2	278466	507841	13.42%	1.429%
26	9.527	1134	1138	1141	rVV4	18710	28883	0.76%	0.081%
27	9.556	1141	1143	1146	rVB	11625	12221	0.32%	0.034%
28	9.838	1189	1191	1195	rVB5	11987	13753	0.36%	0.039%
29	10.032	1222	1224	1227	rVB4	10965	9345	0.25%	0.026%
30	10.197	1245	1252	1260	rVB3	232599	440050	11.63%	1.239%
31	10.367	1277	1281	1283	rVV5	11382	14349	0.38%	0.040%
32	10.479	1298	1300	1303	rBV4	10068	12498	0.33%	0.035%
33	10.614	1319	1323	1324	rBV3	8427	10659	0.28%	0.030%
34	10.655	1327	1330	1332	rBV3	12720	13352	0.35%	0.038%

Data Path : Z:\HPCHEM1\BNA G\DATA\BG101016\
 Data File : BG024256.D
 Acq On : 11 Oct 2016 2:13
 Operator : UM/SJ
 Sample : H5098-13
 Misc :
 ALS Vial : 21 Sample Multiplier: 1

Instrument :
 BNA_G
 ClientSampleId :
 BDNG1

Integration Parameters: LSCINT.P

Integrator: RTE
 Smoothing : ON
 Sampling : 1
 Start Thrs: 0.1
 Stop Thrs : 0

Filtering: 5
 Min Area: 0.1 % of largest Peak
 Max Peaks: 100
 Peak Location: TOP

If leading or trailing edge < 100 prefer < Baseline drop else tangent >
 Peak separation: 1

Method : Z:\HPCHEM1\BNA G\METHODS\SOM02.2-EPA-BG0100716.M
 Title : SVOA CALIBRATION

35	10.725	1335	1342	1349	rVB2	331899	634934	16.78%	1.787%
36	10.784	1349	1352	1355	rVB5	12677	12615	0.33%	0.036%
37	10.843	1359	1362	1364	rBV4	7462	9004	0.24%	0.025%
38	11.125	1401	1410	1419	rBV	910465	1729505	45.71%	4.868%
39	11.254	1425	1432	1440	rBV	295130	556689	14.71%	1.567%
40	11.777	1517	1521	1524	rVB6	10834	15788	0.42%	0.044%
41	12.124	1577	1580	1583	rVV3	11654	14579	0.39%	0.041%
42	12.200	1591	1593	1596	rVV4	7818	9418	0.25%	0.027%
43	12.694	1672	1677	1680	rBV7	12272	20363	0.54%	0.057%
44	12.799	1692	1695	1698	rVB4	7260	9297	0.25%	0.026%
45	13.123	1747	1750	1753	rVV5	7240	11554	0.31%	0.033%
46	13.152	1753	1755	1758	rVB4	9022	9026	0.24%	0.025%
47	13.269	1772	1775	1778	rVB5	13178	17296	0.46%	0.049%
48	13.358	1783	1790	1793	rVV7	8715	14353	0.38%	0.040%
49	13.510	1811	1816	1818	rBV6	16642	17701	0.47%	0.050%
50	13.622	1834	1835	1839	rBV4	9193	10438	0.28%	0.029%
51	13.775	1856	1861	1867	rBV8	26818	58596	1.55%	0.165%
52	13.845	1871	1873	1876	rBV3	8573	9289	0.25%	0.026%
53	13.886	1876	1880	1883	rVB6	8731	10148	0.27%	0.029%
54	14.104	1914	1917	1921	rVB5	8817	11473	0.30%	0.032%
55	14.304	1944	1951	1955	rBV	774855	1170304	30.93%	3.294%
56	14.351	1955	1959	1967	rVB	515357	762973	20.16%	2.147%
57	14.550	1990	1993	1994	rVB3	10529	9531	0.25%	0.027%
58	14.609	1994	2003	2011	rBV	732790	1223457	32.33%	3.444%
59	14.674	2011	2014	2018	rBV5	11414	10673	0.28%	0.030%
60	14.768	2027	2030	2033	rBV5	10102	12463	0.33%	0.035%
61	14.838	2039	2042	2043	rVB4	15987	11013	0.29%	0.031%
62	14.909	2048	2054	2063	rVV	1671565	2654607	70.15%	7.472%
63	15.067	2075	2081	2089	rBV2	401104	655609	17.33%	1.845%
64	15.273	2114	2116	2119	rVB4	9769	12949	0.34%	0.036%
65	15.367	2129	2132	2134	rBV4	8419	9745	0.26%	0.027%
66	15.672	2180	2184	2186	rBV5	17194	24662	0.65%	0.069%
67	15.714	2187	2191	2195	rVB4	21285	33441	0.88%	0.094%
68	15.772	2200	2201	2205	rVB4	13569	9519	0.25%	0.027%
69	15.896	2215	2222	2229	rVB	1089271	1699915	44.92%	4.785%
70	15.996	2233	2239	2246	rVV	380010	591479	15.63%	1.665%
71	16.137	2259	2263	2265	rVB4	15299	20122	0.53%	0.057%

Data Path : Z:\HPCHEM1\BNA G\DATA\BG101016\
 Data File : BG024256.D
 Acq On : 11 Oct 2016 2:13
 Operator : UM/SJ
 Sample : H5098-13
 Misc :
 ALS Vial : 21 Sample Multiplier: 1

Instrument :
 BNA_G
 ClientSampleId :
 BDNG1

Integration Parameters: LSCINT.P

Integrator: RTE
 Smoothing : ON Filtering: 5
 Sampling : 1 Min Area: 0.1 % of largest Peak
 Start Thrs: 0.1 Max Peaks: 100
 Stop Thrs : 0 Peak Location: TOP

If leading or trailing edge < 100 prefer < Baseline drop else tangent >
 Peak separation: 1

Method : Z:\HPCHEM1\BNA G\METHODS\SOM02.2-EPA-BG0100716.M
 Title : SVOA CALIBRATION

72	16.225	2273	2278	2281	rBV7	7916	14063	0.37%	0.040%
73	16.278	2285	2287	2290	rVB3	10321	10045	0.27%	0.028%
74	16.331	2294	2296	2299	rVV4	11277	11962	0.32%	0.034%
75	16.401	2306	2308	2313	rBV5	8205	10167	0.27%	0.029%
76	16.548	2331	2333	2334	rBV2	13094	9312	0.25%	0.026%
77	16.571	2334	2337	2339	rBV3	28916	34153	0.90%	0.096%
78	16.765	2366	2370	2373	rVB6	18414	21476	0.57%	0.060%
79	16.842	2382	2383	2389	rVB5	13030	14958	0.40%	0.042%
80	17.259	2449	2454	2455	rBV5	9934	15424	0.41%	0.043%
81	17.282	2456	2458	2461	rVB4	11176	9623	0.25%	0.027%
82	17.365	2468	2472	2476	rBV4	40899	53637	1.42%	0.151%
83	17.418	2478	2481	2482	rBV3	18707	14341	0.38%	0.040%
84	17.435	2482	2484	2490	rVB7	17400	24881	0.66%	0.070%
85	17.559	2503	2505	2510	rVB7	10550	13048	0.34%	0.037%
86	17.647	2513	2520	2530	rVB2	2075904	3370351	89.07%	9.486%
87	17.747	2531	2537	2546	rVB	1280038	1994261	52.70%	5.613%
88	17.899	2561	2563	2565	rBV3	11470	12007	0.32%	0.034%
89	18.105	2595	2598	2602	rVB6	28109	36021	0.95%	0.101%
90	18.134	2602	2603	2607	rBV4	10131	12473	0.33%	0.035%
91	18.363	2639	2642	2644	rBV3	11170	13107	0.35%	0.037%
92	18.493	2659	2664	2668	rBV2	243754	328450	8.68%	0.924%
93	19.339	2806	2808	2810	rBV3	14525	10772	0.28%	0.030%
94	19.638	2857	2859	2865	rVB5	55566	83899	2.22%	0.236%
95	19.750	2875	2878	2886	rBV7	128969	197729	5.23%	0.557%
96	20.014	2917	2923	2930	rVB	1697735	2596834	68.63%	7.309%
97	21.536	3178	3182	3190	rBV6	153179	245048	6.48%	0.690%
98	21.947	3246	3252	3260	rVB	2099395	3736407	98.74%	10.517%
99	25.161	3791	3799	3810	rVB2	801424	2334292	61.69%	6.570%
100	25.396	3831	3839	3852	rVB2	1201149	3783957	100.00%	10.650%

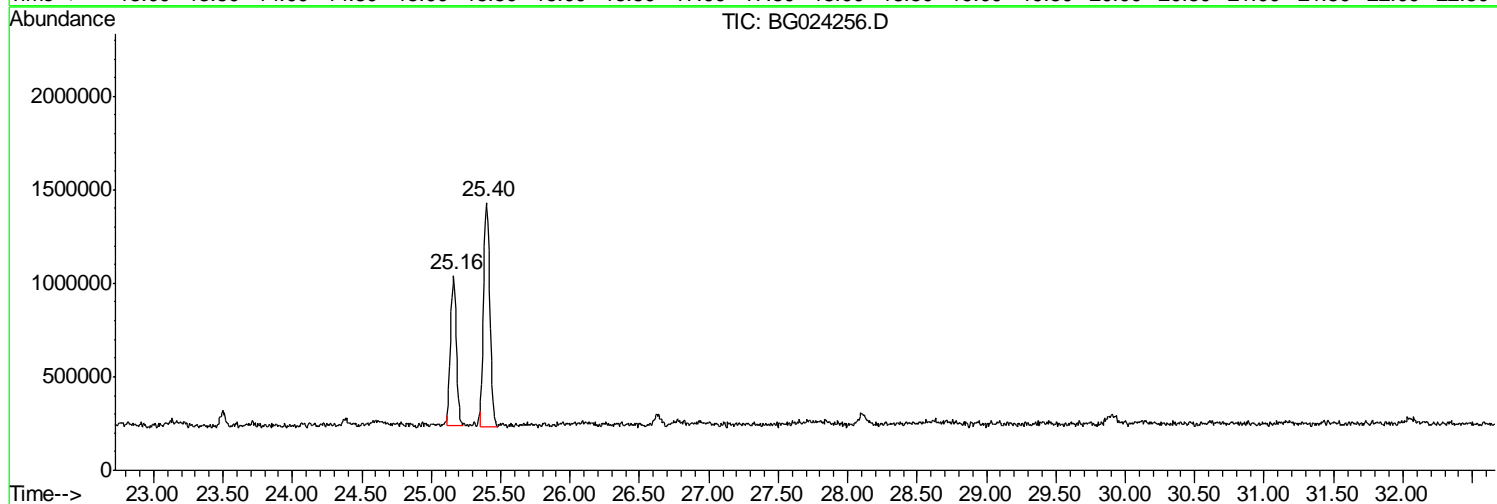
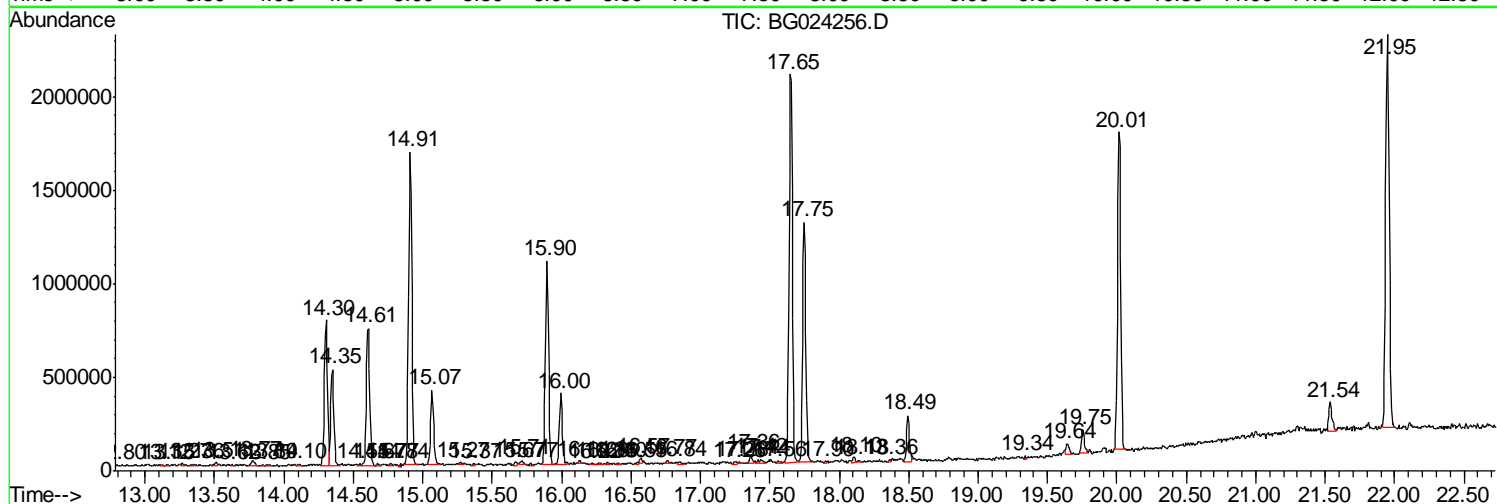
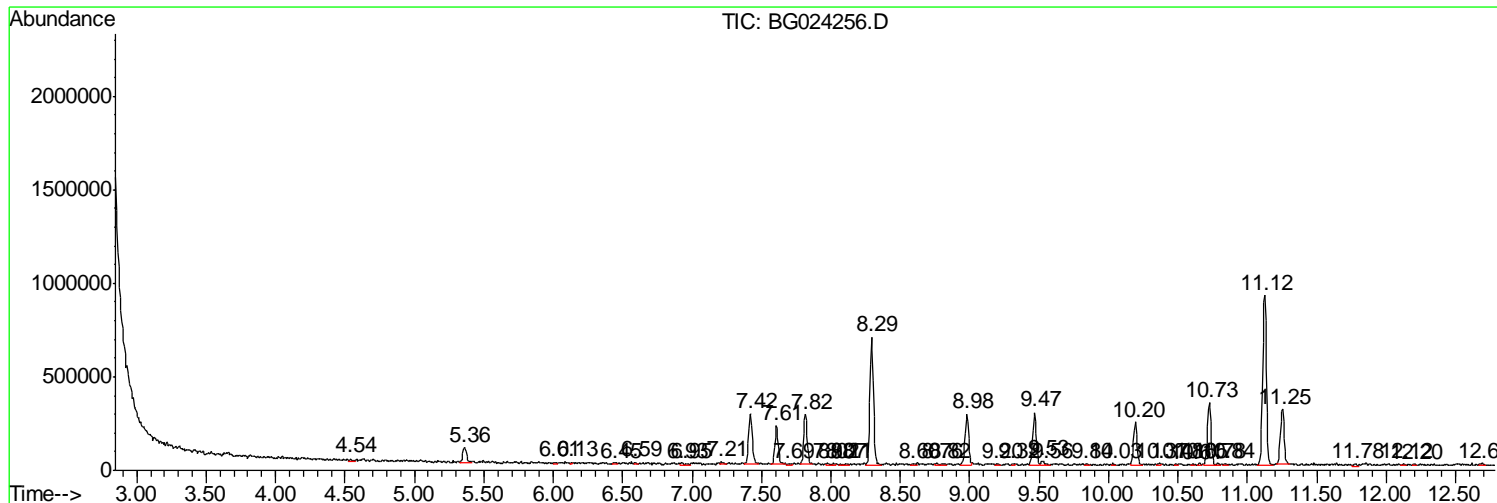
Sum of corrected areas: 35528492

Data Path : Z:\HPCHEM1\BNA G\DATA\BG101016\
 Data File : BG024256.D
 Acq On : 11 Oct 2016 2:13
 Operator : UM/SJ
 Sample : H5098-13
 Misc :
 ALS Vial : 21 Sample Multiplier: 1

Instrument :
 BNA_G
 Client Sampled :
 BDNG1

Quant Method : Z:\HPCHEM1\BNA G\METHODS\SOM02.2-EPA-BG0100716.M
 Quant Title : SVOA CALIBRATION

TIC Library : C:\DATABASE\NIST11.L
 TIC Integration Parameters: LSCINT.P



Data Path : Z:\HPCHEM1\BNA G\DATA\BG101016\
 Data File : BG024256.D
 Acq On : 11 Oct 2016 2:13
 Operator : UM/SJ
 Sample : H5098-13
 Misc :
 ALS Vial : 21 Sample Multiplier: 1

Instrument :
 BNA_G
 ClientSampleID :
 BDN1

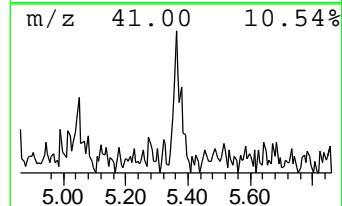
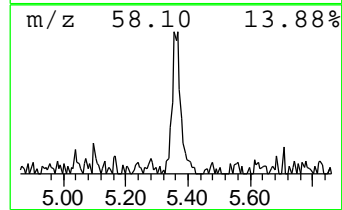
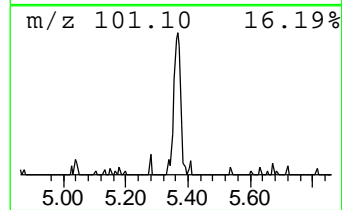
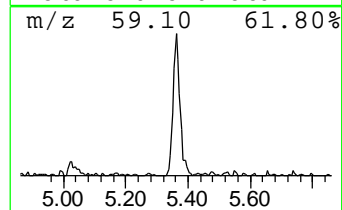
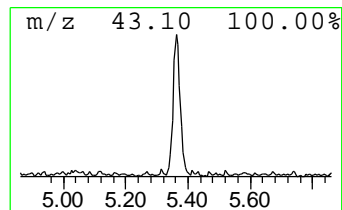
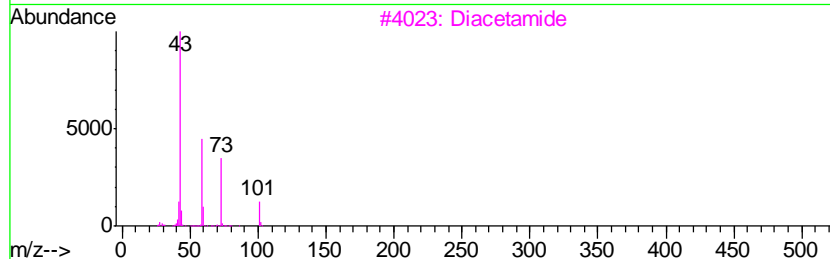
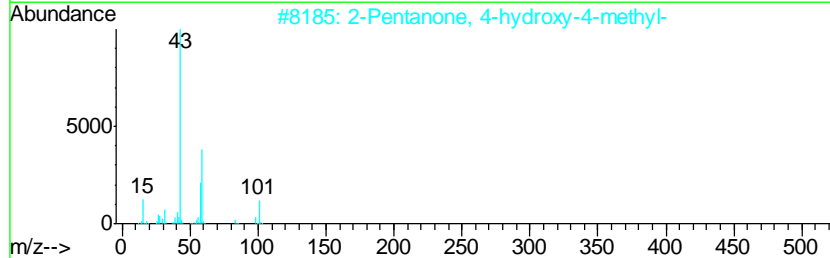
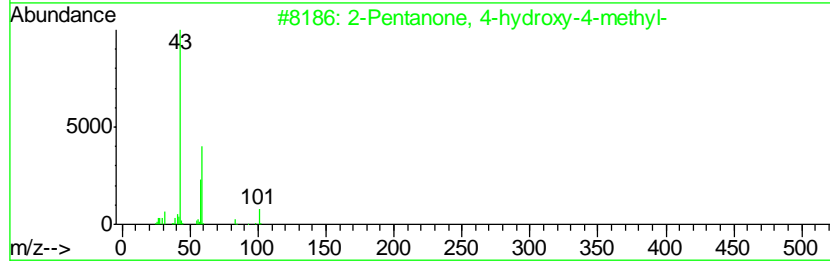
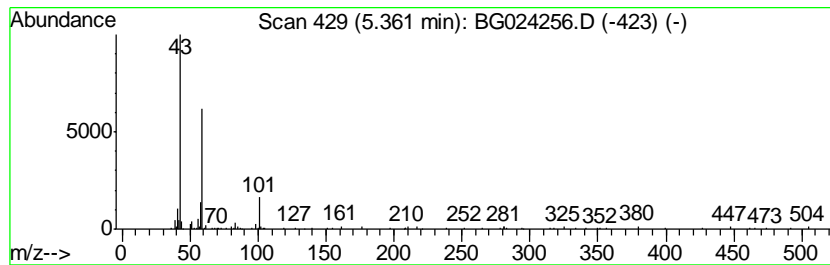
Quant Method : Z:\HPCHEM1\BNA G\METHODS\SOM02.2-EPA-BG0100716.M
 Quant Title : SVOA CALIBRATION

TIC Library : C:\DATABASE\NIST11.L
 TIC Integration Parameters: LSCINT.P

 Peak Number 1 2-Pentanone, 4-hydroxy-4-me... Concentration Rank 1

R.T.	EstConc	Area	Relative to ISTD	R.T.
5.36	2.61 ng/ul	156329	1,4-Dichlorobenzene-d4	8.29

Hit#	of	Tentative ID	MW	MolForm	CAS#	Qual
1	5	2-Pentanone, 4-hydroxy-4-methyl-	116	C6H12O2	000123-42-2	53
2		2-Pentanone, 4-hydroxy-4-methyl-	116	C6H12O2	000123-42-2	53
3		Diacetamide	101	C4H7NO2	000625-77-4	42
4		.alpha.-Hydroxyisobutyric acid, ...	146	C6H10O4	1000374-31-3	36
5		2-Hexanol, 2-methyl-	116	C7H16O	000625-23-0	36



Data Path : Z:\HPCHEM1\BNA_G\DATA\BG101016\
Data File : BG024256.D
Acq On : 11 Oct 2016 2:13
Operator : UM/SJ
Sample : H5098-13
Misc :
ALS Vial : 21 Sample Multiplier: 1

Instrument :
BNA_G
ClientSampleId :
BDNG1

Quant Method : Z:\HPCHEM1\BNA_G\METHODS\SOM02.2-EPA-BG0100716.M
Quant Title : SVOA CALIBRATION

TIC Library : C:\DATABASE\NIST11.L
TIC Integration Parameters: LSCINT.P

TIC Top Hit name	RT	EstConc	Units	Response	--Internal Standard--			
					#	RT	Resp	Conc
2-Pentanone, 4-hy...	5.36	2.6	ng/ul	156329	1	8.29	1195950	20.0