

Data Path : Z:\svoasrv\HPCHEM1\BNA_G\Data\BG101122\
 Data File : BG055123.D
 Acq On : 11 Oct 2022 11:33
 Operator : CG/JU
 Sample : PB148225BS
 Misc :
 ALS Vial : 4 Sample Multiplier: 1

Instrument :
 BNA_G
 ClientSampleId :
 PB148225BS

Quant Time: Oct 12 06:17:45 2022
 Quant Method : Z:\svoasrv\HPCHEM1\BNA_G\Methods\8270-BG100322.M
 Quant Title : ASP BNA STANDARDS FOR 5 POINT CALIBRATION
 QLast Update : Sat Oct 08 03:04:59 2022
 Response via : Initial Calibration

Compound	R.T.	QIon	Response	Conc	Units	Dev(Min)	
Internal Standards							
1) 1,4-Dichlorobenzene-d4	8.329	152	34665	20.000	ng	0.00	
21) Naphthalene-d8	11.161	136	156509	20.000	ng	0.00	
39) Acenaphthene-d10	14.933	164	114875	20.000	ng	0.00	
64) Phenanthrene-d10	17.671	188	284753	20.000	ng	0.00	
76) Chrysene-d12	21.966	240	270569	20.000	ng	0.00	
86) Perylene-d12	25.409	264	284912	20.000	ng	0.00	
System Monitoring Compounds							
5) 2-Fluorophenol	5.850	112	272253	174.444	ng	0.00	
7) Phenol-d6	7.460	99	361592	154.632	ng	0.00	
23) Nitrobenzene-d5	9.499	82	224813	85.832	ng	0.00	
42) 2,4,6-Tribromophenol	16.414	330	219797	181.502	ng	0.00	
45) 2-Fluorobiphenyl	13.564	172	585904	79.623	ng	0.00	
79) Terphenyl-d14	20.245	244	1137788	84.994	ng	0.00	
Target Compounds							
2) 1,4-Dioxane	3.676	88	24038	27.222	ng		Qvalue 97
3) Pyridine	4.087	79	67038	25.246	ng		92
4) n-Nitrosodimethylamine	3.999	42	51509	33.920	ng		91
6) Aniline	7.642	93	138854	40.584	ng		96
8) 2-Chlorophenol	7.889	128	103876	57.864	ng		93
9) Benzaldehyde	7.448	77	66217	35.249	ng		96
10) Phenol	7.489	94	134653	50.673	ng		98
11) bis(2-Chloroethyl)ether	7.730	93	88740	40.745	ng		98
12) 1,3-Dichlorobenzene	8.218	146	106391	43.056	ng		95
13) 1,4-Dichlorobenzene	8.365	146	105806	42.312	ng		96
14) 1,2-Dichlorobenzene	8.688	146	105323	43.352	ng		98
15) Benzyl Alcohol	8.558	79	103988	49.510	ng		96
16) 2,2'-oxybis(1-Chloropr...	8.852	45	150824	36.560	ng		98
17) 2-Methylphenol	8.752	107	96727	51.665	ng		95
18) Hexachloroethane	9.428	117	35947	45.335	ng		85
19) n-Nitroso-di-n-propyla...	9.134	70	86155	38.035	ng	#	91
20) 3+4-Methylphenols	9.081	107	131180	50.313	ng		98
22) Acetophenone	9.152	105	161244	40.627	ng		97
24) Nitrobenzene	9.546	77	123385	43.385	ng	#	87
25) Isophorone	10.068	82	236270	42.443	ng		97
26) 2-Nitrophenol	10.256	139	60834	73.260	ng	#	87
27) 2,4-Dimethylphenol	10.304	122	111543	58.451	ng		98
28) bis(2-Chloroethoxy)met...	10.544	93	128419	45.084	ng		98
29) 2,4-Dichlorophenol	10.791	162	116168	49.633	ng		97
30) 1,2,4-Trichlorobenzene	11.014	180	114871	42.026	ng		98
31) Naphthalene	11.214	128	327310	39.625	ng		99
32) Benzoic acid	10.427	122	84775	63.066	ng		88
33) 4-Chloroaniline	11.302	127	113481	33.224	ng		99
34) Hexachlorobutadiene	11.490	225	75388	42.535	ng		99
35) Caprolactam	12.072	113	23881	32.169	ng		90
36) 4-Chloro-3-methylphenol	12.395	107	127002	47.673	ng		95
37) 2-Methylnaphthalene	12.789	142	243443	39.992	ng		98
38) 1-Methylnaphthalene	13.006	142	232392	39.248	ng		98
40) 1,2,4,5-Tetrachloroben...	13.147	216	143613	42.817	ng		99
41) Hexachlorocyclopentadiene	13.130	237	187832	130.048	ng		98
43) 2,4,6-Trichlorophenol	13.376	196	106412	51.757	ng		99

Data Path : Z:\svoasrv\HPCHEM1\BNA_G\Data\BG101122\
 Data File : BG055123.D
 Acq On : 11 Oct 2022 11:33
 Operator : CG/JU
 Sample : PB148225BS
 Misc :
 ALS Vial : 4 Sample Multiplier: 1

Instrument :
 BNA_G
 ClientSampleId :
 PB148225BS

Quant Time: Oct 12 06:17:45 2022
 Quant Method : Z:\svoasrv\HPCHEM1\BNA_G\Methods\8270-BG100322.M
 Quant Title : ASP BNA STANDARDS FOR 5 POINT CALIBRATION
 QLast Update : Sat Oct 08 03:04:59 2022
 Response via : Initial Calibration

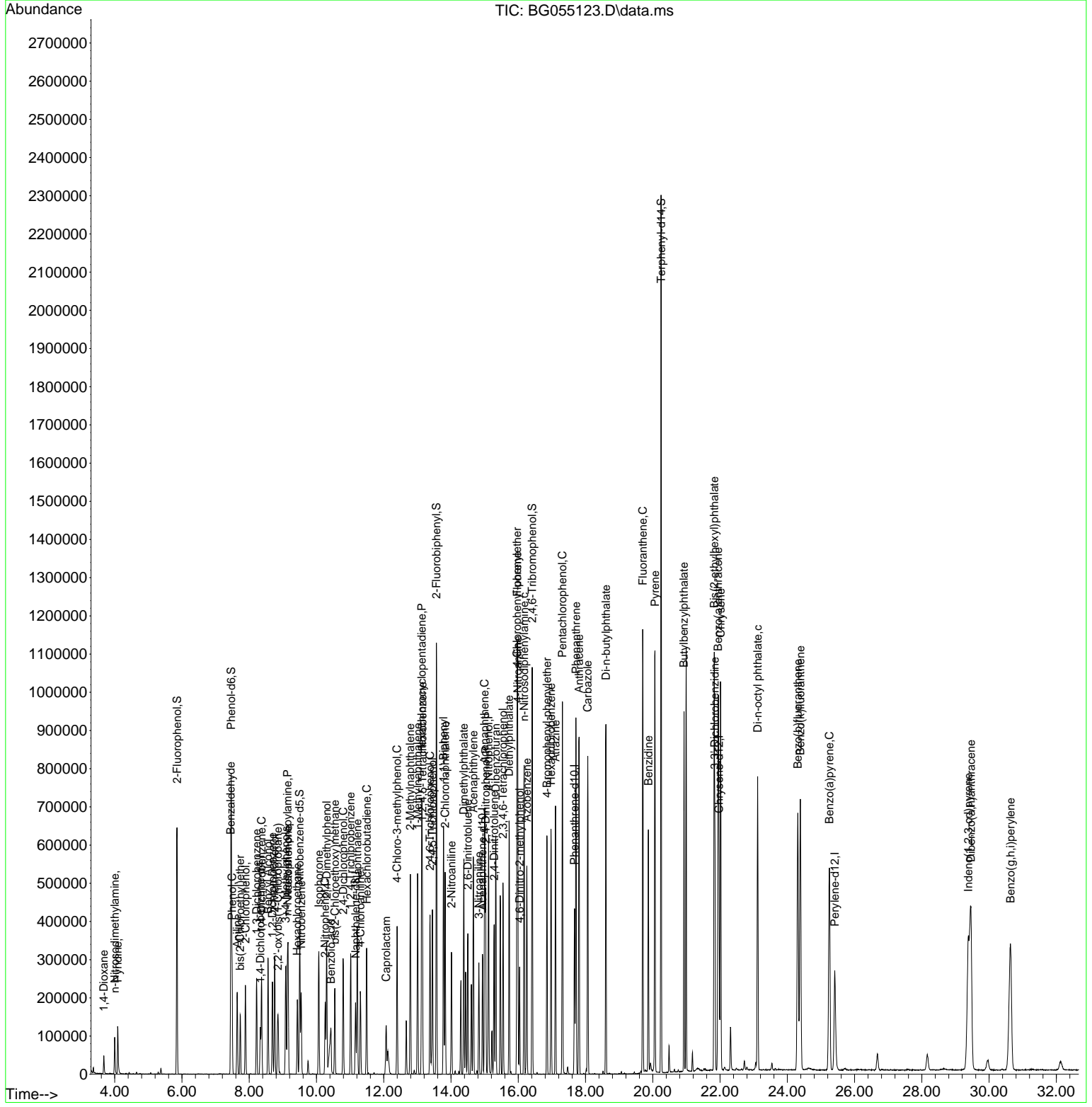
Compound	R.T.	QIon	Response	Conc	Units	Dev(Min)
44) 2,4,5-Trichlorophenol	13.447	196	115758	50.013	ng	97
46) 1,1'-Biphenyl	13.776	154	341027	43.298	ng	98
47) 2-Chloronaphthalene	13.823	162	264375	41.656	ng	98
48) 2-Nitroaniline	14.011	65	91111	50.763	ng	100
49) Acenaphthylene	14.663	152	431163	41.025	ng	100
50) Dimethylphthalate	14.381	163	375210	48.123	ng	99
51) 2,6-Dinitrotoluene	14.499	165	80318	50.122	ng	# 80
52) Acenaphthene	14.998	154	313469	48.036	ng	98
53) 3-Nitroaniline	14.828	138	74085	40.361	ng	93
54) 2,4-Dinitrophenol	15.027	184	105415	145.457	ng	# 47
55) Dibenzofuran	15.333	168	433293	41.617	ng	98
56) 4-Nitrophenol	15.116	139	148357	102.284	ng	95
57) 2,4-Dinitrotoluene	15.280	165	117444	53.426	ng	# 83
58) Fluorene	15.973	166	345625	41.484	ng	98
59) 2,3,4,6-Tetrachlorophenol	15.544	232	107654	50.339	ng	99
60) Diethylphthalate	15.727	149	385959	47.975	ng	99
61) 4-Chlorophenyl-phenyle...	15.962	204	197757	43.666	ng	99
62) 4-Nitroaniline	15.985	138	91154	48.598	ng	95
63) Azobenzene	16.255	77	332886	36.739	ng	96
65) 4,6-Dinitro-2-methylph...	16.038	198	68265	64.317	ng	91
66) n-Nitrosodiphenylamine	16.173	169	318782	42.987	ng	98
67) 4-Bromophenyl-phenylether	16.855	248	135113	44.866	ng	92
68) Hexachlorobenzene	16.972	284	152129	43.693	ng	98
69) Atrazine	17.107	200	141675	58.638	ng	99
70) Pentachlorophenol	17.313	266	195687	98.031	ng	95
71) Phenanthrene	17.712	178	604526	40.416	ng	100
72) Anthracene	17.806	178	612316	42.090	ng	99
73) Carbazole	18.065	167	567373	44.433	ng	100
74) Di-n-butylphthalate	18.606	149	680773	51.072	ng	99
75) Fluoranthene	19.698	202	747368	40.051	ng	98
77) Benzidine	19.869	184	383989	82.381	ng	99
78) Pyrene	20.063	202	745618	41.443	ng	98
80) Butylbenzylphthalate	20.926	149	288773	50.934	ng	97
81) Benzo(a)anthracene	21.943	228	710328	41.327	ng	99
82) 3,3'-Dichlorobenzidine	21.843	252	237280	47.488	ng	97
83) Chrysene	22.013	228	657357	39.681	ng	99
84) Bis(2-ethylhexyl)phtha...	21.825	149	415368	49.202	ng	99
85) Di-n-octyl phthalate	23.118	149	701835	49.494	ng	95
87) Indeno(1,2,3-cd)pyrene	29.381	276	876729	42.641	ng	98
88) Benzo(b)fluoranthene	24.311	252	761492	45.361	ng	100
89) Benzo(k)fluoranthene	24.387	252	745329	44.071	ng	100
90) Benzo(a)pyrene	25.251	252	678762	47.176	ng	98
91) Dibenzo(a,h)anthracene	29.458	278	764123	45.749	ng	100
92) Benzo(g,h,i)perylene	30.638	276	750165	44.742	ng	99

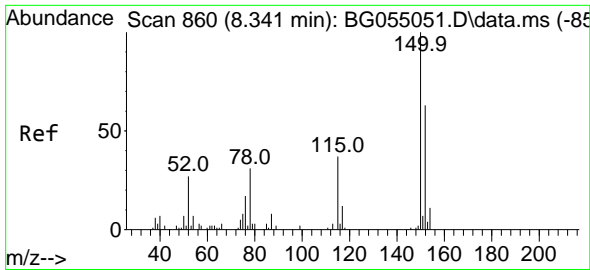
(#) = qualifier out of range (m) = manual integration (+) = signals summed

Data Path : Z:\svoasrv\HPCHEM1\BNA_G\Data\BG101122\
 Data File : BG055123.D
 Acq On : 11 Oct 2022 11:33
 Operator : CG/JU
 Sample : PB148225BS
 Misc :
 ALS Vial : 4 Sample Multiplier: 1

Instrument :
 BNA_G
 ClientSampleId :
 PB148225BS

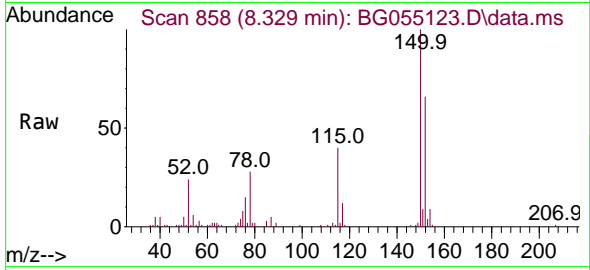
Quant Time: Oct 12 06:17:45 2022
 Quant Method : Z:\svoasrv\HPCHEM1\BNA_G\Methods\8270-BG100322.M
 Quant Title : ASP BNA STANDARDS FOR 5 POINT CALIBRATION
 QLast Update : Sat Oct 08 03:04:59 2022
 Response via : Initial Calibration



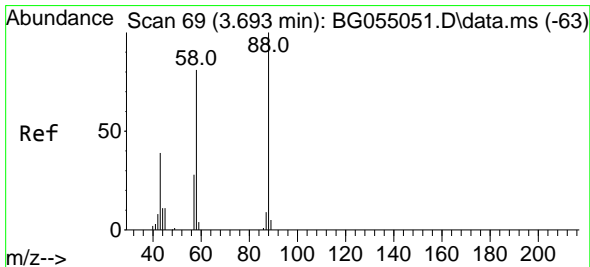
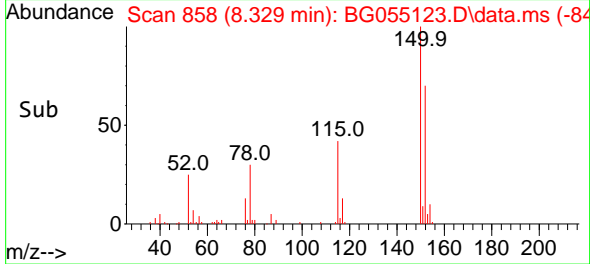
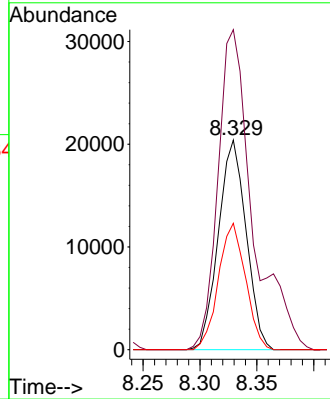


#1
 1,4-Dichlorobenzene-d4
 Concen: 20.000 ng
 RT: 8.329 min Scan# 81
 Delta R.T. -0.009 min
 Lab File: BG055123.D
 Acq: 11 Oct 2022 11:33

Instrument :
 BNA_G
 ClientSampleId :
 PB148225BS

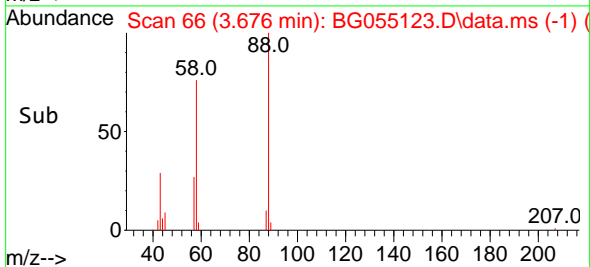
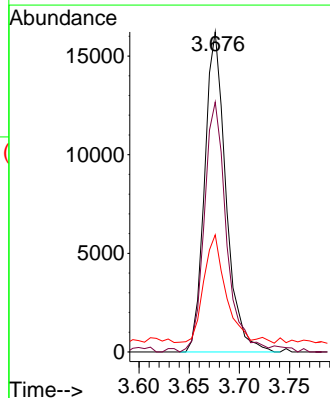
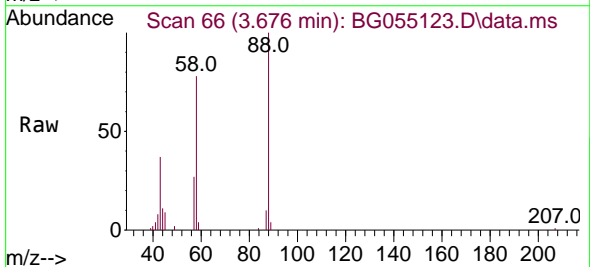


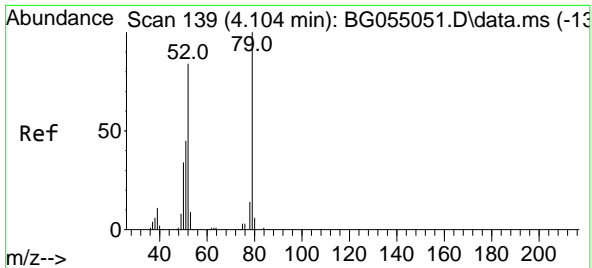
Tgt Ion:152 Resp: 34665
 Ion Ratio Lower Upper
 152 100
 150 152.6 128.0 192.0
 115 60.3 47.7 71.5



#2
 1,4-Dioxane
 Concen: 27.222 ng
 RT: 3.676 min Scan# 66
 Delta R.T. -0.008 min
 Lab File: BG055123.D
 Acq: 11 Oct 2022 11:33

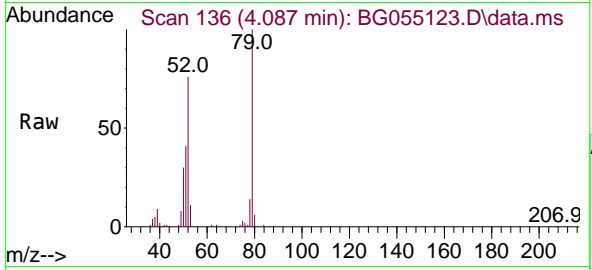
Tgt Ion: 88 Resp: 24038
 Ion Ratio Lower Upper
 88 100
 58 81.7 62.6 94.0
 43 35.6 29.0 43.6



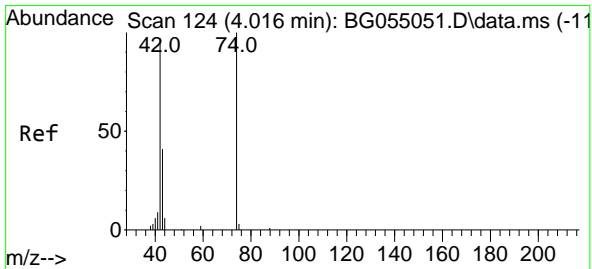
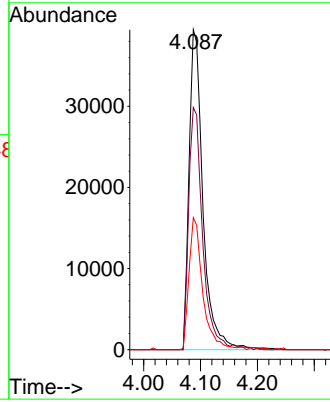
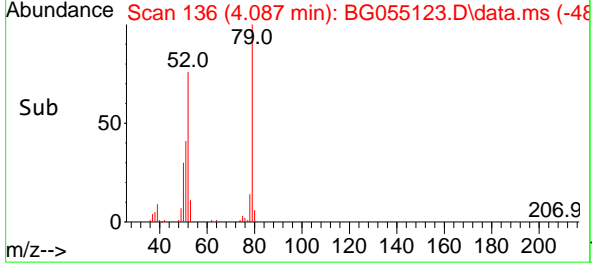


#3
 Pyridine
 Concen: 25.246 ng
 RT: 4.087 min Scan# 11
 Delta R.T. -0.014 min
 Lab File: BG055123.D
 Acq: 11 Oct 2022 11:33

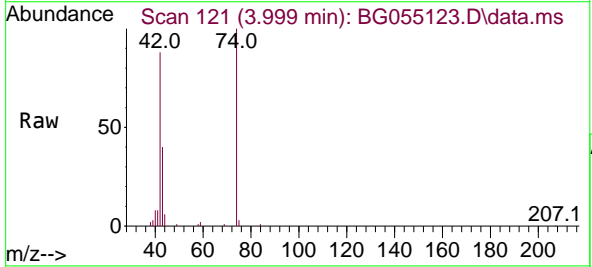
Instrument :
 BNA_G
 ClientSampleId :
 PB148225BS



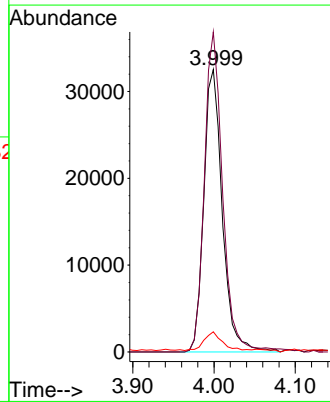
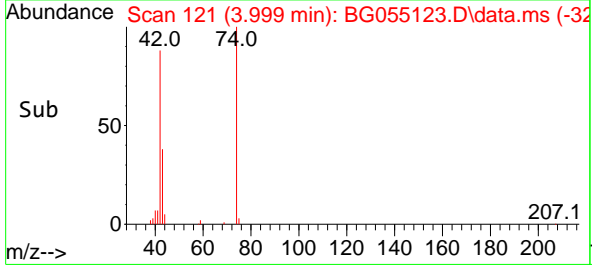
Tgt Ion: 79 Resp: 67038
 Ion Ratio Lower Upper
 79 100
 52 75.7 66.8 100.2
 51 41.3 37.3 55.9

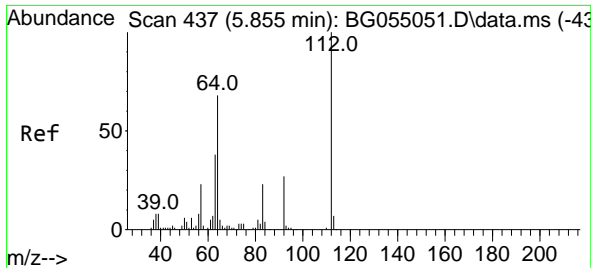


#4
 n-Nitrosodimethylamine
 Concen: 33.920 ng
 RT: 3.999 min Scan# 121
 Delta R.T. -0.008 min
 Lab File: BG055123.D
 Acq: 11 Oct 2022 11:33



Tgt Ion: 42 Resp: 51509
 Ion Ratio Lower Upper
 42 100
 74 113.3 82.6 124.0
 44 7.2 7.0 10.6



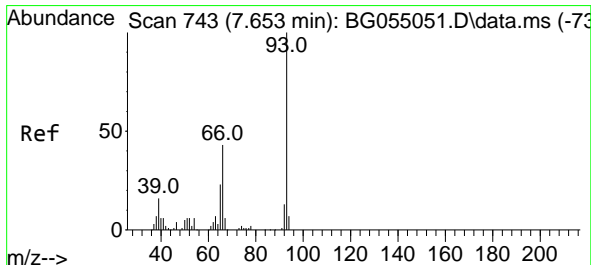
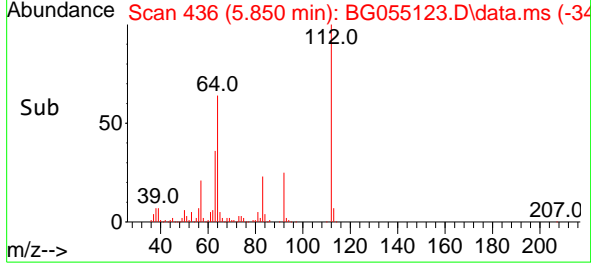
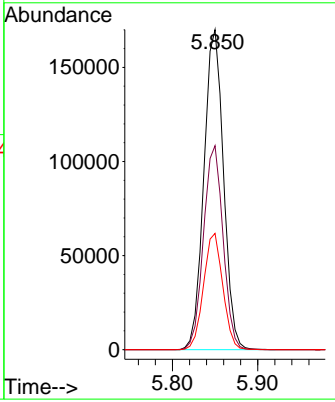
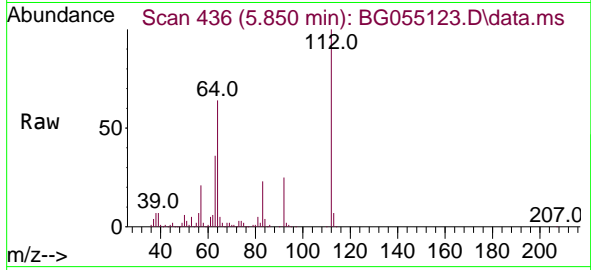


#5
 2-Fluorophenol
 Concen: 174.444 ng
 RT: 5.850 min Scan# 411
 Delta R.T. -0.002 min
 Lab File: BG055123.D
 Acq: 11 Oct 2022 11:33

Instrument : BNA_G
 ClientSampleId : PB148225BS

Tgt Ion: 112 Resp: 272253

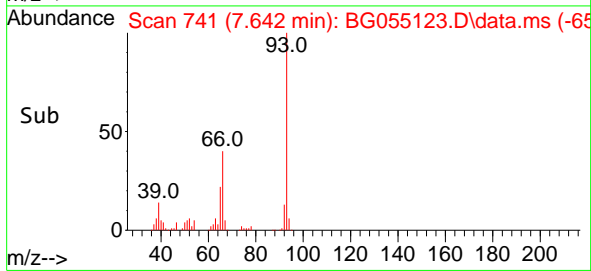
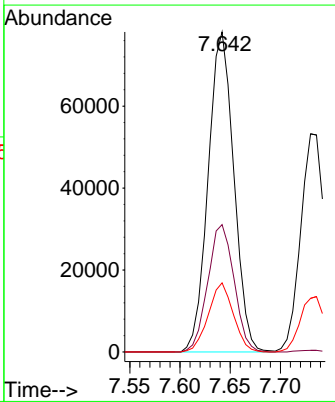
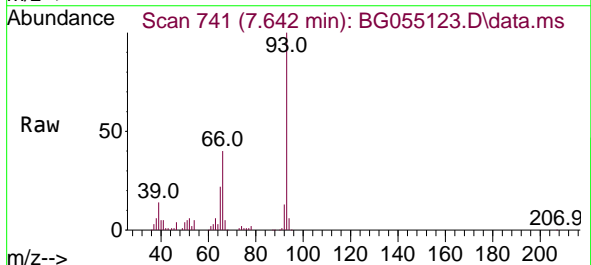
Ion	Ratio	Lower	Upper
112	100		
64	63.7	54.5	81.7
63	36.3	30.5	45.7

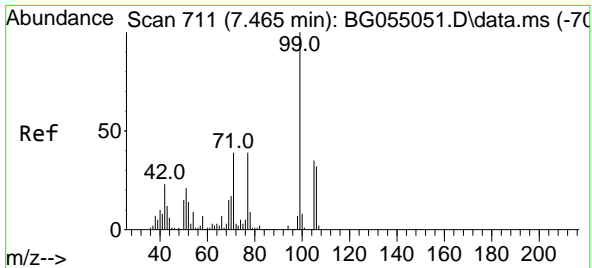


#6
 Aniline
 Concen: 40.584 ng
 RT: 7.642 min Scan# 741
 Delta R.T. -0.003 min
 Lab File: BG055123.D
 Acq: 11 Oct 2022 11:33

Tgt Ion: 93 Resp: 138854

Ion	Ratio	Lower	Upper
93	100		
66	39.8	34.6	52.0
65	21.6	18.2	27.2



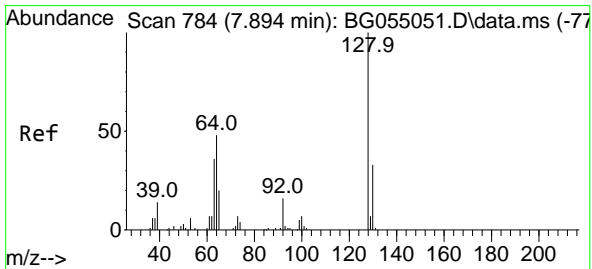
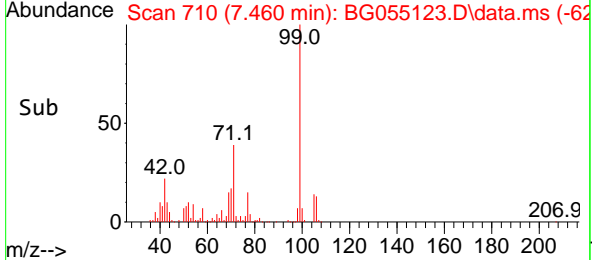
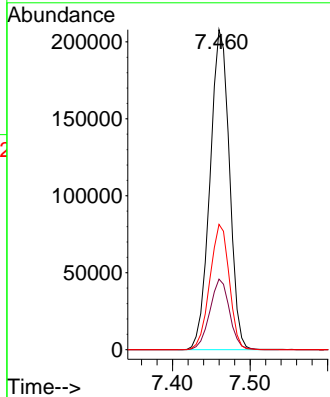
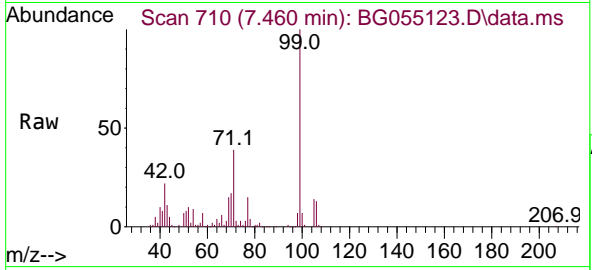


#7
 Phenol-d6
 Concen: 154.632 ng
 RT: 7.460 min Scan# 711
 Delta R.T. -0.002 min
 Lab File: BG055123.D
 Acq: 11 Oct 2022 11:33

Instrument : BNA_G
 ClientSampleId : PB148225BS

Tgt Ion: 99 Resp: 361592

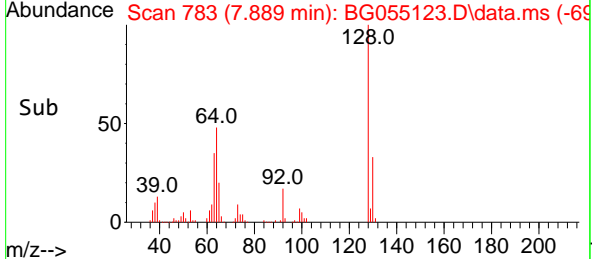
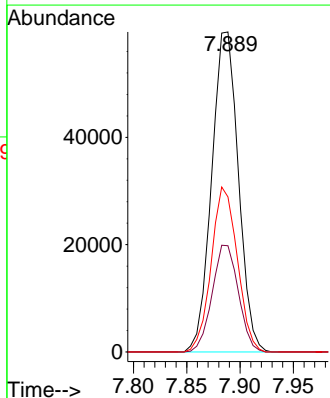
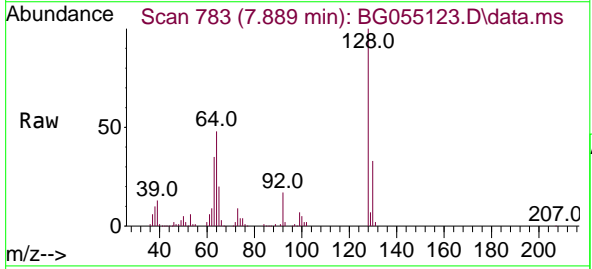
Ion	Ratio	Lower	Upper
99	100		
42	22.0	18.6	28.0
71	39.1	31.2	46.8

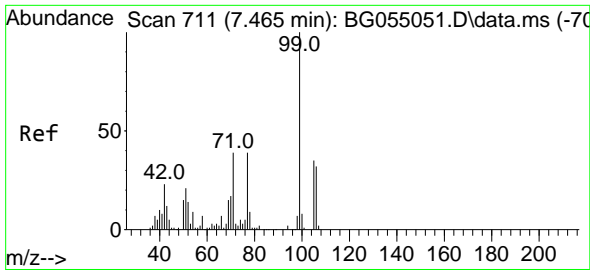


#8
 2-Chlorophenol
 Concen: 57.864 ng
 RT: 7.889 min Scan# 783
 Delta R.T. -0.003 min
 Lab File: BG055123.D
 Acq: 11 Oct 2022 11:33

Tgt Ion: 128 Resp: 103876

Ion	Ratio	Lower	Upper
128	100		
130	33.2	12.9	52.9
64	48.5	35.9	75.9

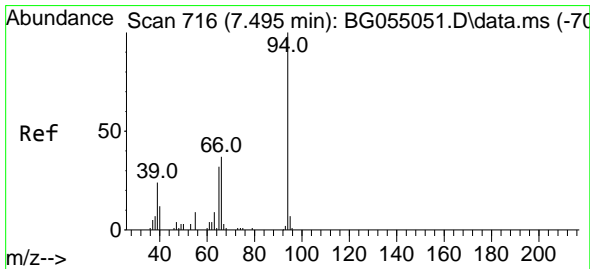
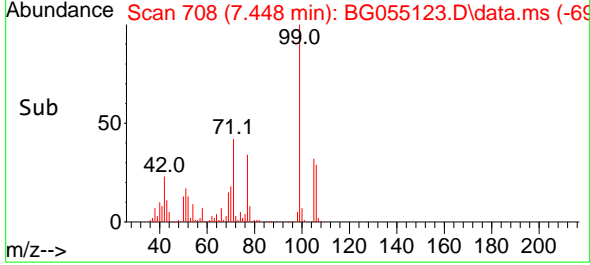
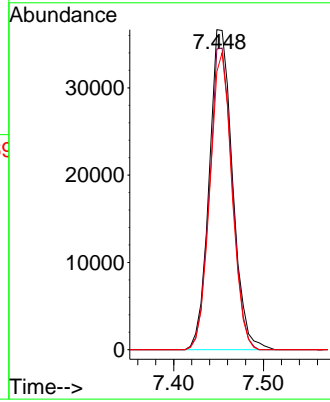
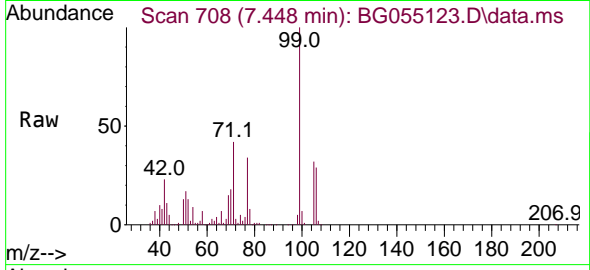




#9
Benzaldehyde
Concen: 35.249 ng
RT: 7.448 min Scan# 708
Delta R.T. -0.014 min
Lab File: BG055123.D
Acq: 11 Oct 2022 11:33

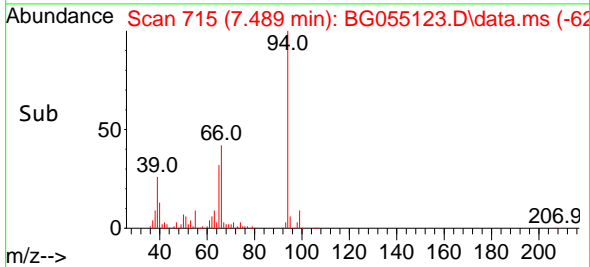
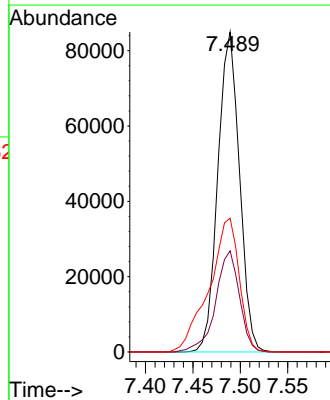
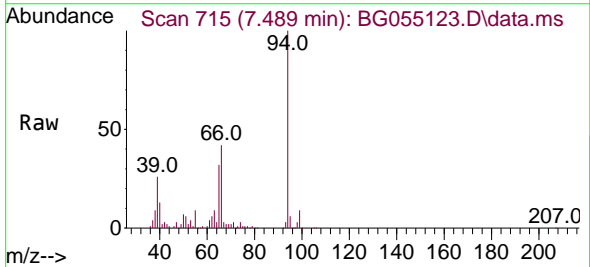
Instrument :
BNA_G
ClientSampleId :
PB148225BS

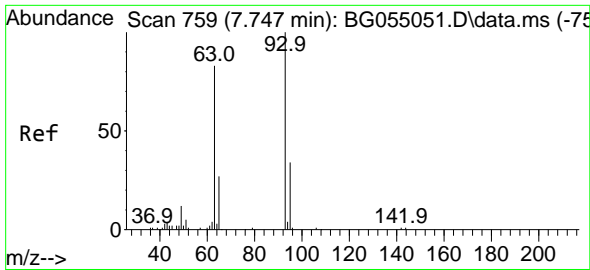
Tgt Ion: 77 Resp: 66217
Ion Ratio Lower Upper
77 100
105 93.9 70.4 110.4
106 86.8 62.8 102.8



#10
Phenol
Concen: 50.673 ng
RT: 7.489 min Scan# 715
Delta R.T. -0.002 min
Lab File: BG055123.D
Acq: 11 Oct 2022 11:33

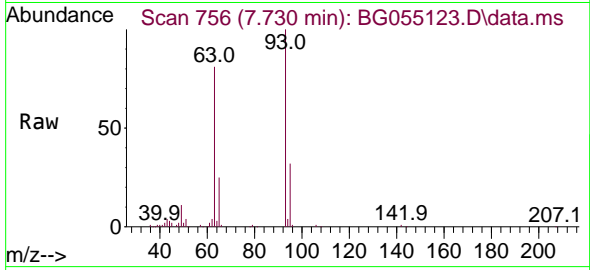
Tgt Ion: 94 Resp: 134653
Ion Ratio Lower Upper
94 100
65 31.6 11.8 51.8
66 41.8 19.3 59.3



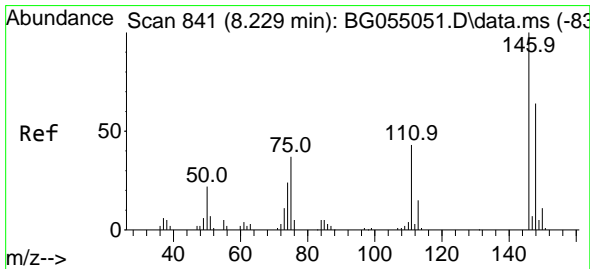
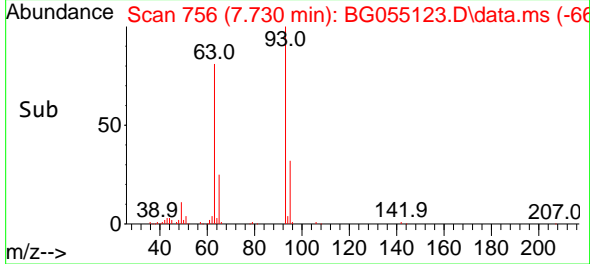
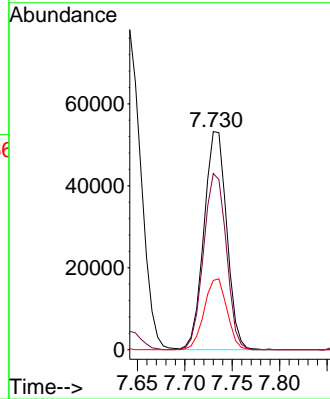


#11
 bis(2-Chloroethyl)ether
 Concen: 40.745 ng
 RT: 7.730 min Scan# 711
 Delta R.T. -0.008 min
 Lab File: BG055123.D
 Acq: 11 Oct 2022 11:33

Instrument :
 BNA_G
 ClientSampleId :
 PB148225BS

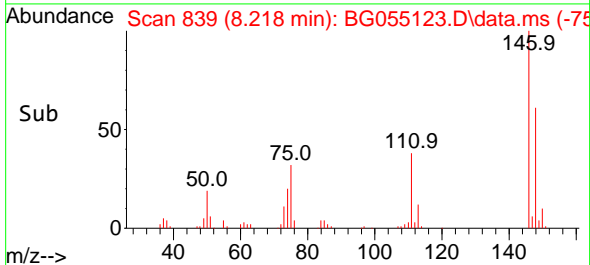
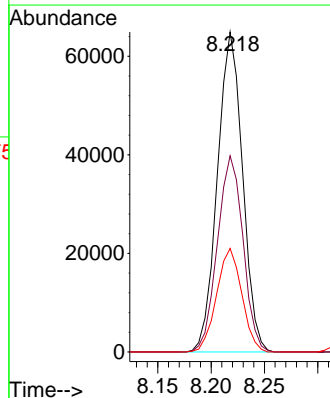
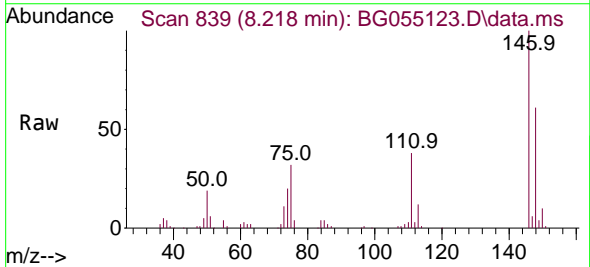


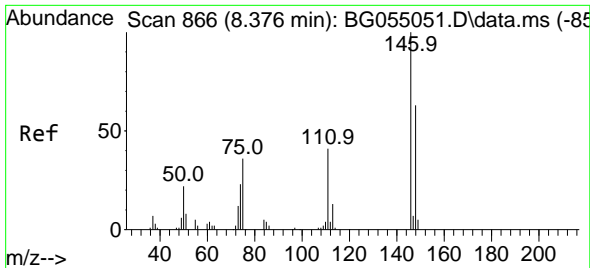
Tgt Ion: 93 Resp: 88740
 Ion Ratio Lower Upper
 93 100
 63 80.8 62.5 102.5
 95 31.7 13.6 53.6



#12
 1,3-Dichlorobenzene
 Concen: 43.056 ng
 RT: 8.218 min Scan# 839
 Delta R.T. -0.008 min
 Lab File: BG055123.D
 Acq: 11 Oct 2022 11:33

Tgt Ion:146 Resp: 106391
 Ion Ratio Lower Upper
 146 100
 148 61.3 50.9 76.3
 75 32.4 29.8 44.6



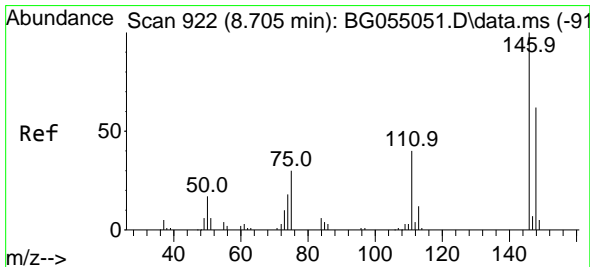
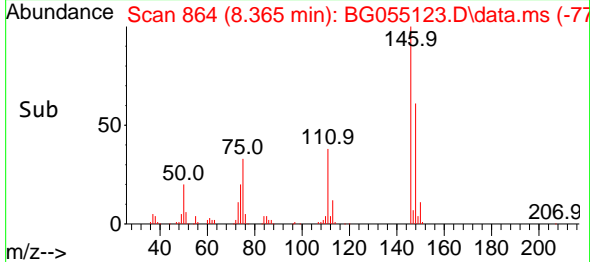
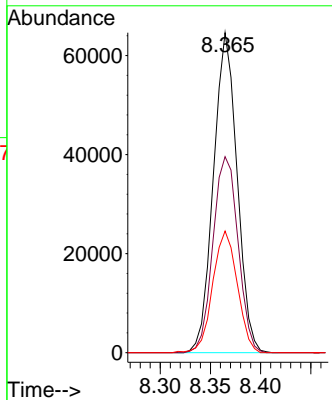
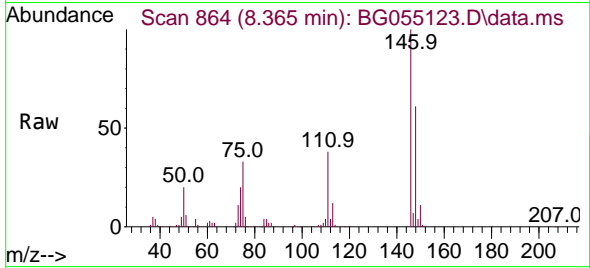


#13
 1,4-Dichlorobenzene
 Concen: 42.312 ng
 RT: 8.365 min Scan# 801
 Delta R.T. -0.008 min
 Lab File: BG055123.D
 Acq: 11 Oct 2022 11:33

Instrument : BNA_G
 ClientSampleId : PB148225BS

Tgt Ion:146 Resp: 105806

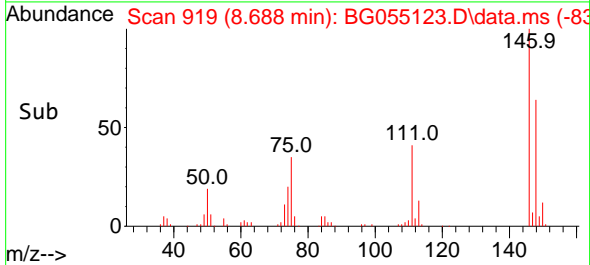
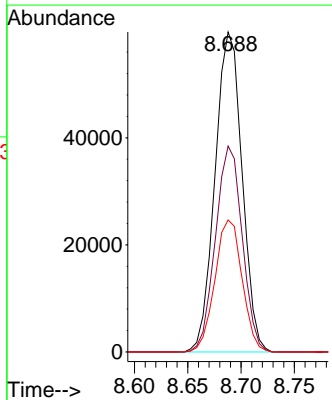
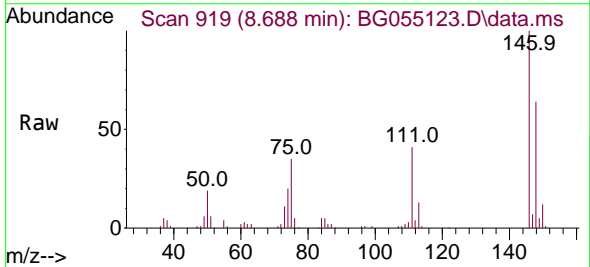
Ion	Ratio	Lower	Upper
146	100		
148	61.3	50.5	75.7
111	38.0	33.1	49.7

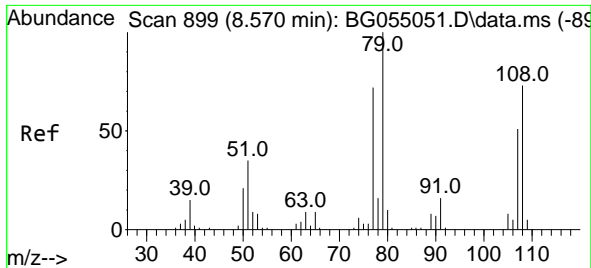


#14
 1,2-Dichlorobenzene
 Concen: 43.352 ng
 RT: 8.688 min Scan# 919
 Delta R.T. -0.008 min
 Lab File: BG055123.D
 Acq: 11 Oct 2022 11:33

Tgt Ion:146 Resp: 105323

Ion	Ratio	Lower	Upper
146	100		
148	64.4	49.6	74.4
111	41.3	32.4	48.6

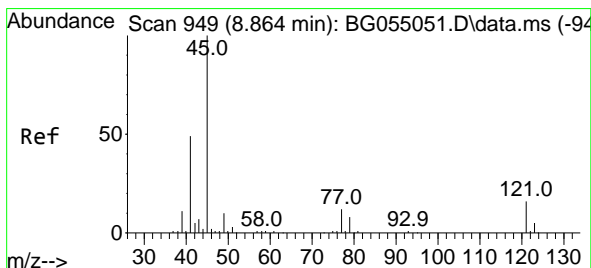
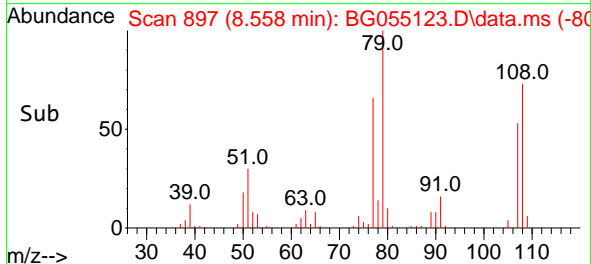
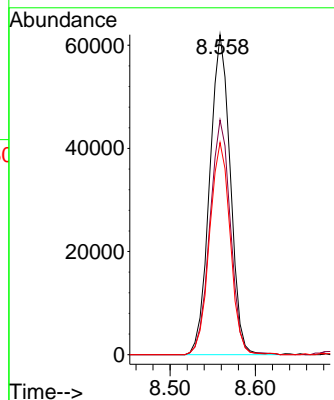
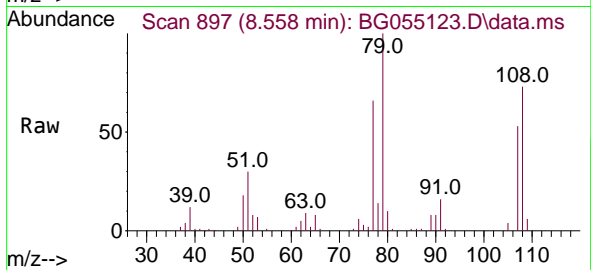




#15
 Benzyl Alcohol
 Concen: 49.510 ng
 RT: 8.558 min Scan# 899
 Delta R.T. -0.002 min
 Lab File: BG055123.D
 Acq: 11 Oct 2022 11:33

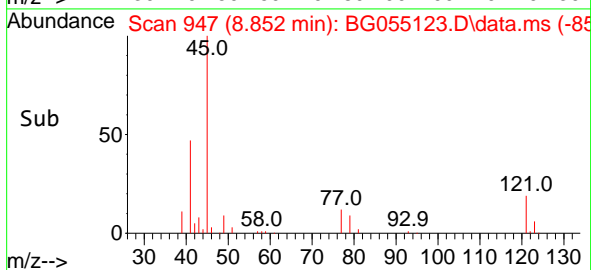
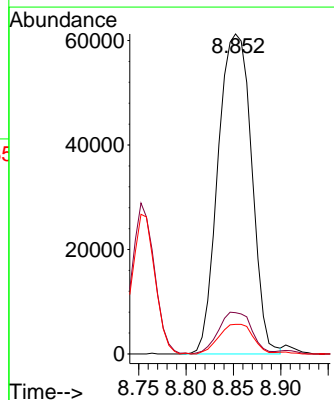
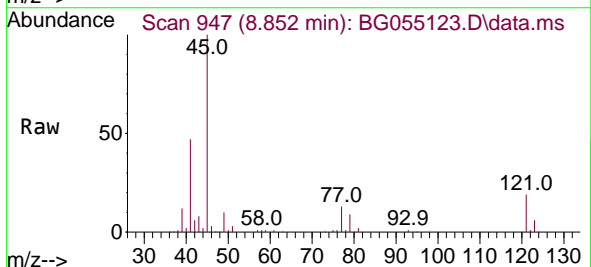
Instrument :
 BNA_G
 ClientSampleId :
 PB148225BS

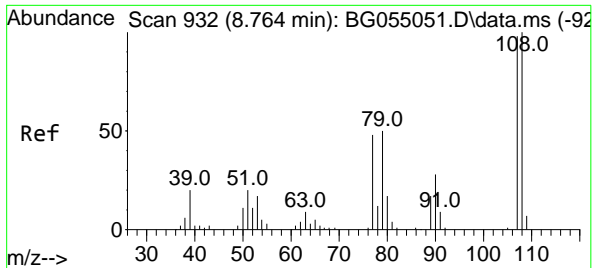
Tgt Ion: 79 Resp: 103988
 Ion Ratio Lower Upper
 79 100
 108 73.3 58.6 87.8
 77 66.3 57.8 86.6



#16
 2,2'-oxybis(1-Chloropropane)
 Concen: 36.560 ng
 RT: 8.852 min Scan# 947
 Delta R.T. -0.003 min
 Lab File: BG055123.D
 Acq: 11 Oct 2022 11:33

Tgt Ion: 45 Resp: 150824
 Ion Ratio Lower Upper
 45 100
 77 12.9 0.0 32.1
 79 9.2 0.0 28.7



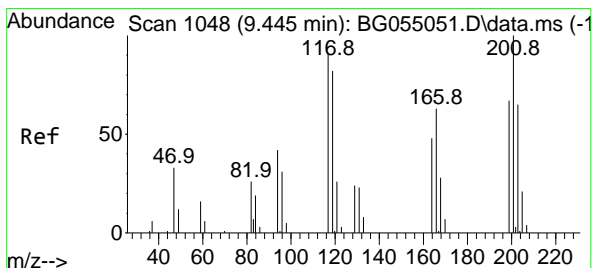
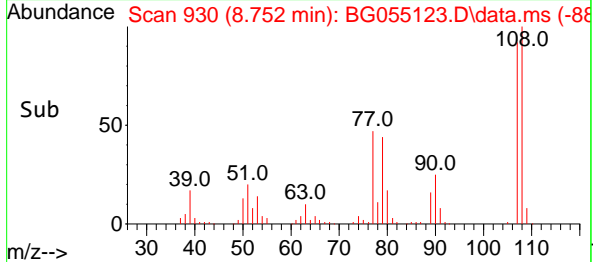
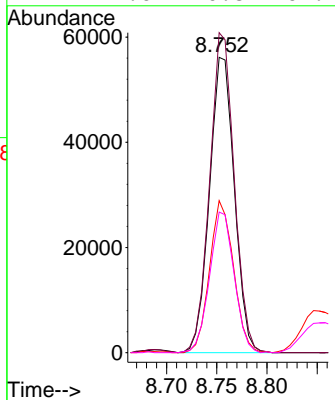
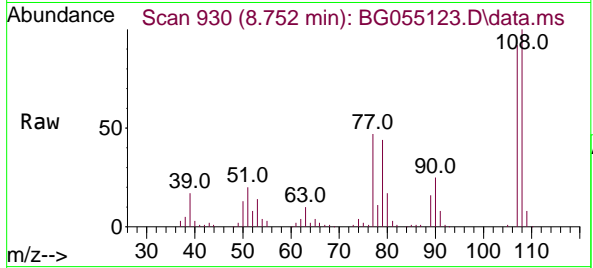


#17
 2-Methylphenol
 Concen: 51.665 ng
 RT: 8.752 min Scan# 91
 Delta R.T. -0.008 min
 Lab File: BG055123.D
 Acq: 11 Oct 2022 11:33

Instrument :
 BNA_G
 ClientSampleId :
 PB148225BS

Tgt Ion:107 Resp: 96727

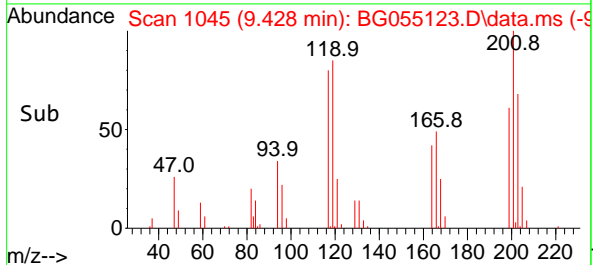
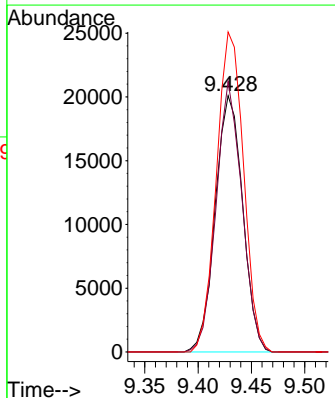
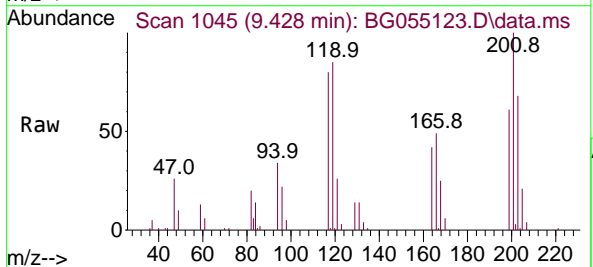
Ion	Ratio	Lower	Upper
107	100		
108	108.3	81.8	122.6
77	51.4	39.4	59.2
79	47.6	40.8	61.2

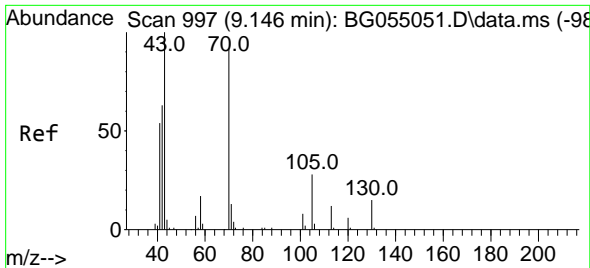


#18
 Hexachloroethane
 Concen: 45.335 ng
 RT: 9.428 min Scan# 1045
 Delta R.T. -0.008 min
 Lab File: BG055123.D
 Acq: 11 Oct 2022 11:33

Tgt Ion:117 Resp: 35947

Ion	Ratio	Lower	Upper
117	100		
119	105.5	72.2	108.2
201	124.8	88.2	132.4





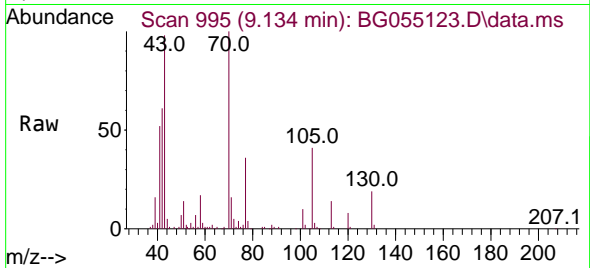
#19
 n-Nitroso-di-n-propylamine
 Concen: 38.035 ng
 RT: 9.134 min Scan# 91
 Delta R.T. -0.002 min
 Lab File: BG055123.D
 Acq: 11 Oct 2022 11:33

Instrument :

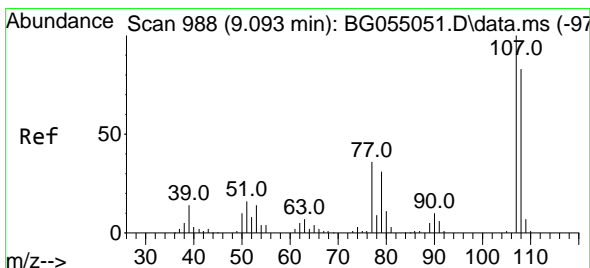
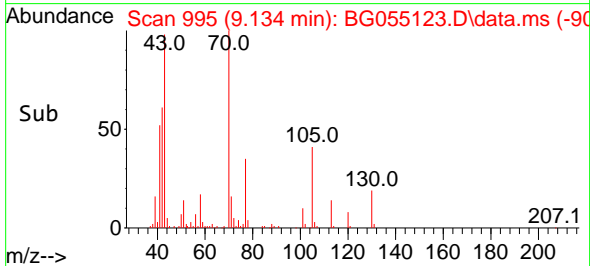
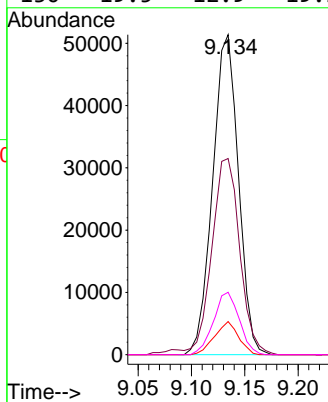
BNA_G

ClientSampleId :

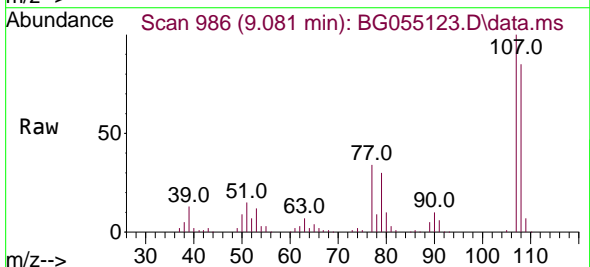
PB148225BS



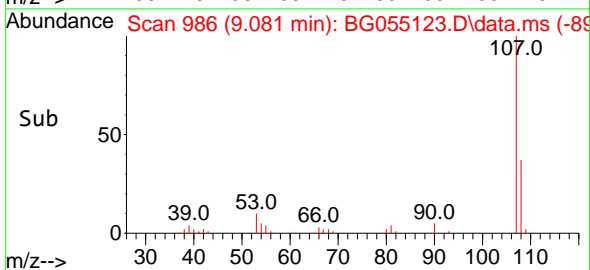
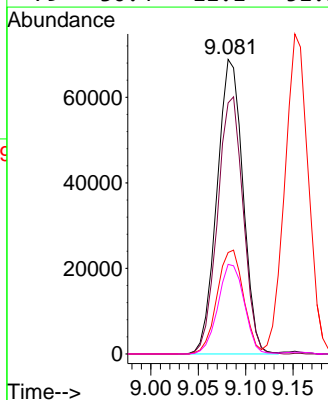
Tgt Ion: 70 Resp: 86155
 Ion Ratio Lower Upper
 70 100
 42 61.3 55.8 83.6
 101 10.4 7.1 10.7
 130 19.5 12.9 19.3#

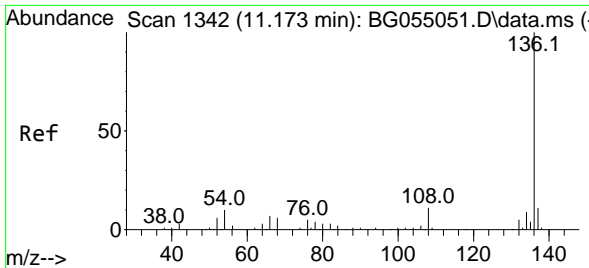


#20
 3+4-Methylphenols
 Concen: 50.313 ng
 RT: 9.081 min Scan# 986
 Delta R.T. -0.008 min
 Lab File: BG055123.D
 Acq: 11 Oct 2022 11:33



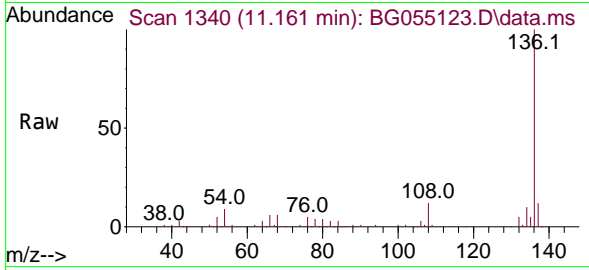
Tgt Ion: 107 Resp: 131180
 Ion Ratio Lower Upper
 107 100
 108 85.2 63.4 103.4
 77 34.5 16.9 56.9
 79 30.4 11.1 51.1





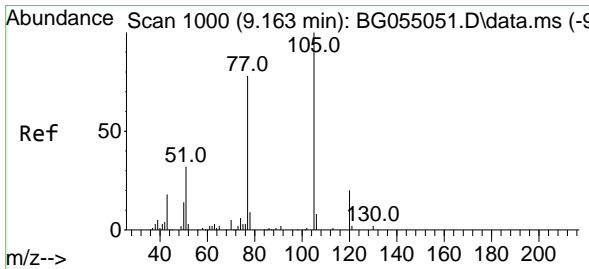
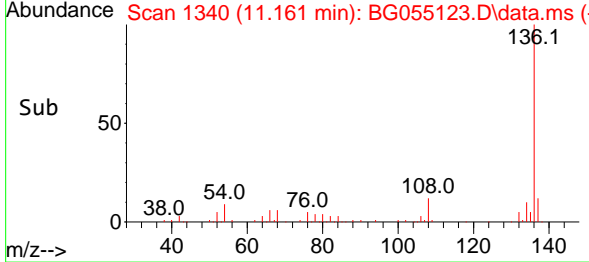
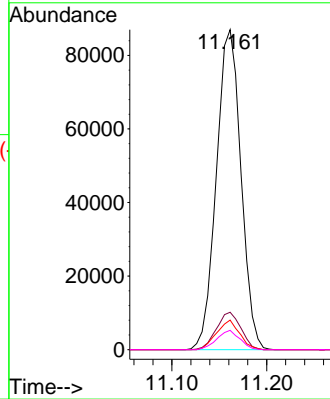
#21
 Naphthalene-d8
 Concen: 20.000 ng
 RT: 11.161 min Scan# 111
 Delta R.T. -0.008 min
 Lab File: BG055123.D
 Acq: 11 Oct 2022 11:33

Instrument :
 BNA_G
 ClientSampleId :
 PB148225BS



Tgt Ion:136 Resp: 156509

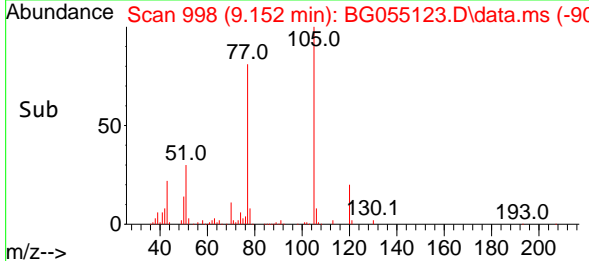
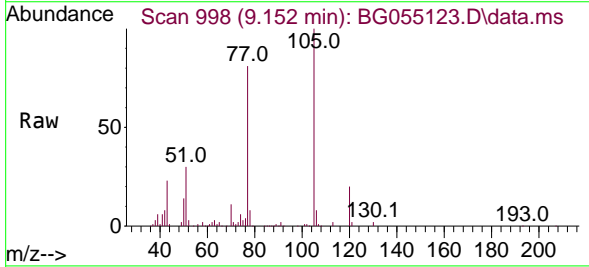
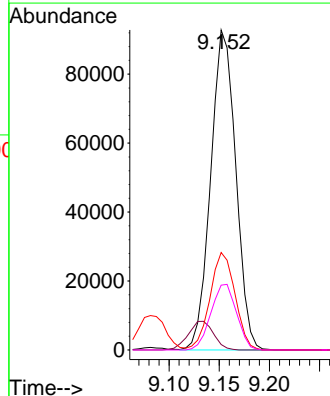
Ion	Ratio	Lower	Upper
136	100		
137	11.7	8.7	13.1
54	9.2	8.2	12.4
68	6.0	4.9	7.3

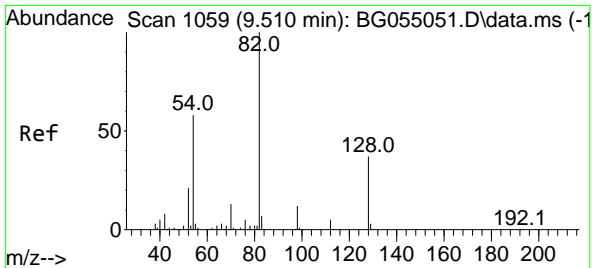


#22
 Acetophenone
 Concen: 40.627 ng
 RT: 9.152 min Scan# 998
 Delta R.T. -0.008 min
 Lab File: BG055123.D
 Acq: 11 Oct 2022 11:33

Tgt Ion:105 Resp: 161244

Ion	Ratio	Lower	Upper
105	100		
71	1.7	1.4	2.2
51	30.4	26.3	39.5
120	20.3	16.2	24.4





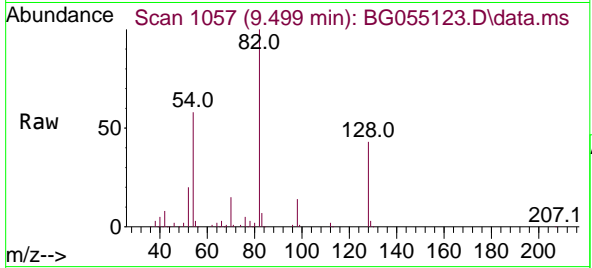
#23
 Nitrobenzene-d5
 Concen: 85.832 ng
 RT: 9.499 min Scan# 1065
 Delta R.T. -0.008 min
 Lab File: BG055123.D
 Acq: 11 Oct 2022 11:33

Instrument :

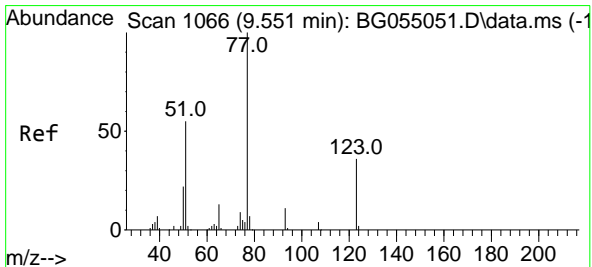
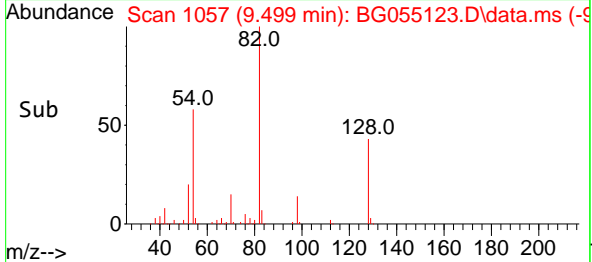
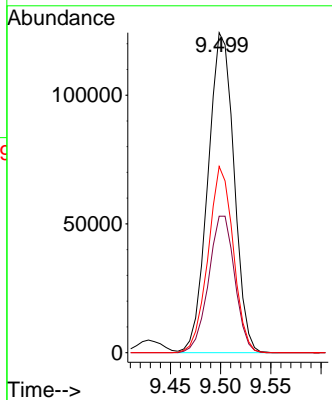
BNA_G

ClientSampleId :

PB148225BS

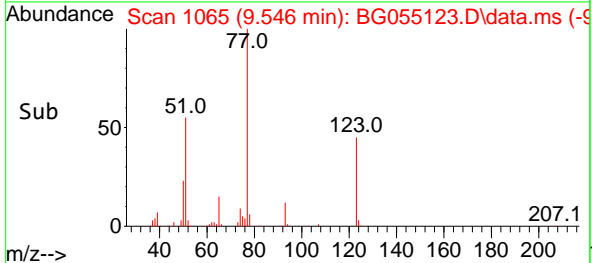
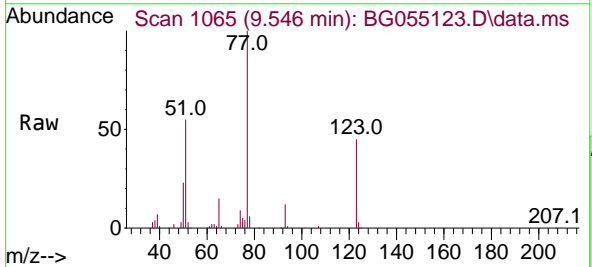
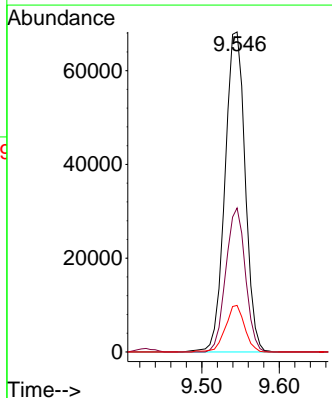


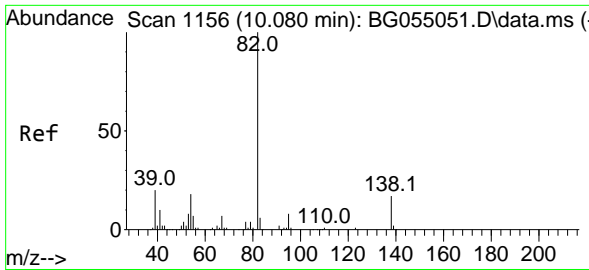
Tgt Ion: 82 Resp: 224813
 Ion Ratio Lower Upper
 82 100
 128 42.7 29.5 44.3
 54 58.2 46.7 70.1



#24
 Nitrobenzene
 Concen: 43.385 ng
 RT: 9.546 min Scan# 1065
 Delta R.T. -0.003 min
 Lab File: BG055123.D
 Acq: 11 Oct 2022 11:33

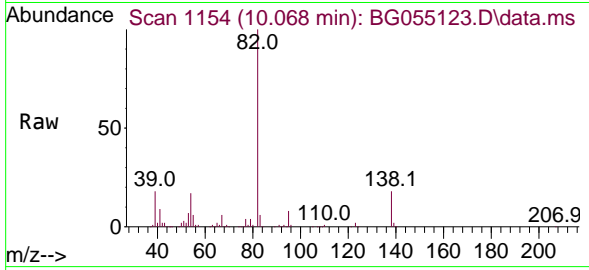
Tgt Ion: 77 Resp: 123385
 Ion Ratio Lower Upper
 77 100
 123 45.0 28.6 42.8#
 65 14.5 10.5 15.7



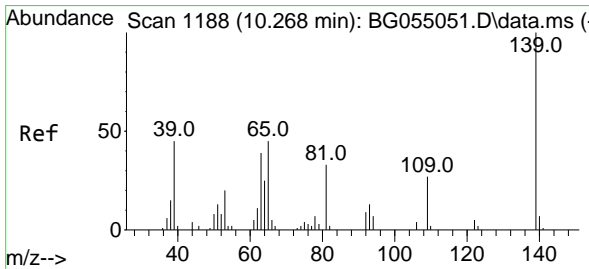
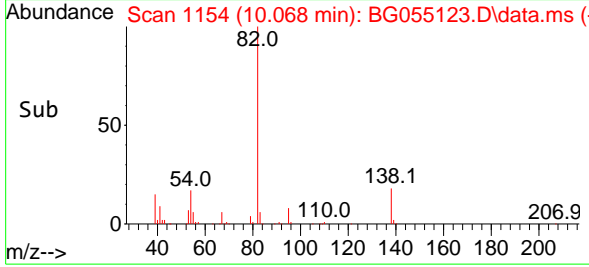
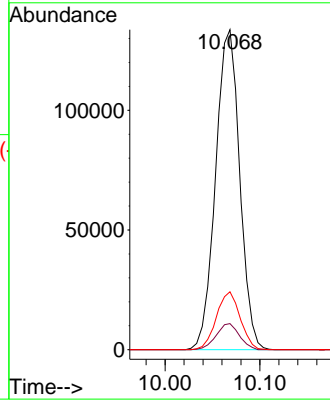


#25
 Isophorone
 Concen: 42.443 ng
 RT: 10.068 min Scan# 1154
 Delta R.T. -0.003 min
 Lab File: BG055123.D
 Acq: 11 Oct 2022 11:33

Instrument :
 BNA_G
 ClientSampleId :
 PB148225BS

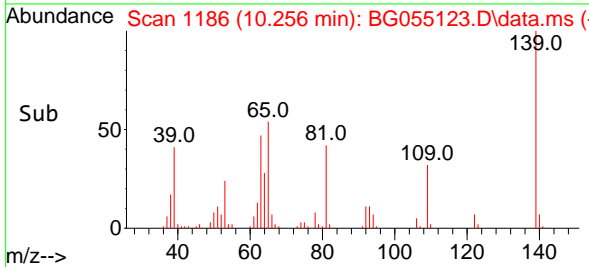
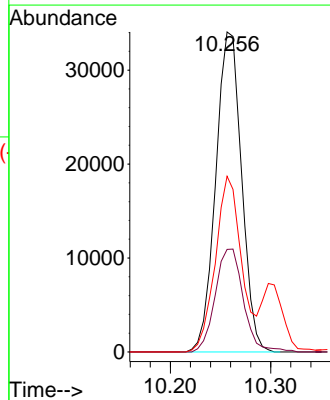
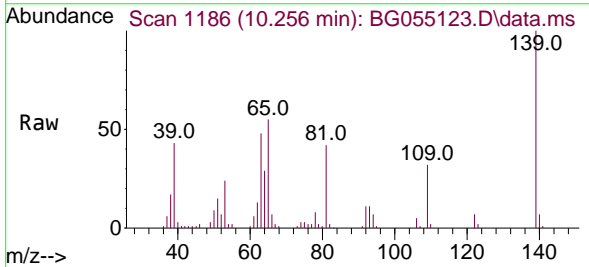


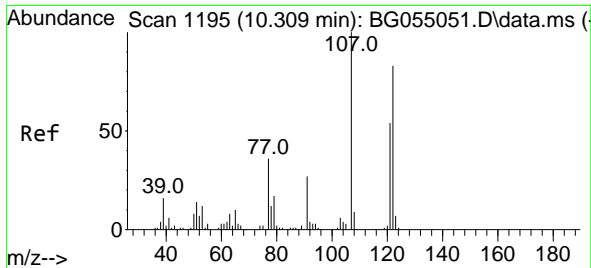
Tgt Ion: 82 Resp: 236270
 Ion Ratio Lower Upper
 82 100
 95 8.2 6.2 9.4
 138 18.1 13.4 20.0



#26
 2-Nitrophenol
 Concen: 73.260 ng
 RT: 10.256 min Scan# 1186
 Delta R.T. -0.008 min
 Lab File: BG055123.D
 Acq: 11 Oct 2022 11:33

Tgt Ion:139 Resp: 60834
 Ion Ratio Lower Upper
 139 100
 109 32.0 21.7 32.5
 65 54.9 36.4 54.6#



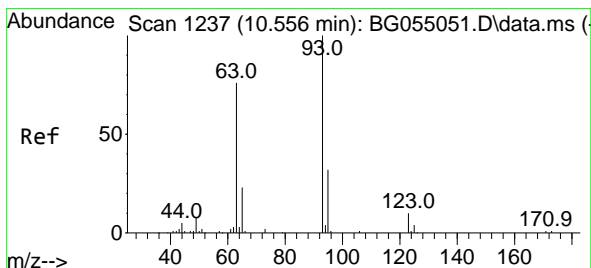
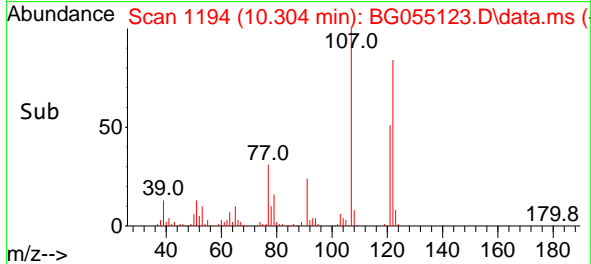
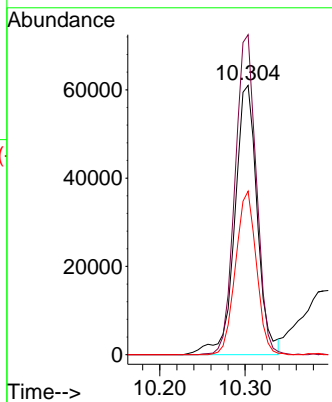
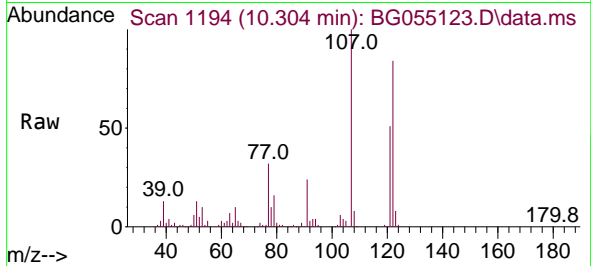


#27
 2,4-Dimethylphenol
 Concen: 58.451 ng
 RT: 10.304 min Scan# 1194
 Delta R.T. -0.002 min
 Lab File: BG055123.D
 Acq: 11 Oct 2022 11:33

Instrument :
 BNA_G
 ClientSampleId :
 PB148225BS

Tgt Ion:122 Resp: 111543

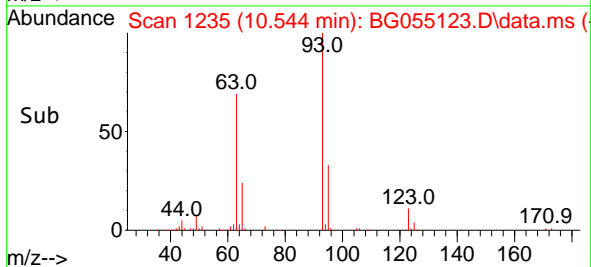
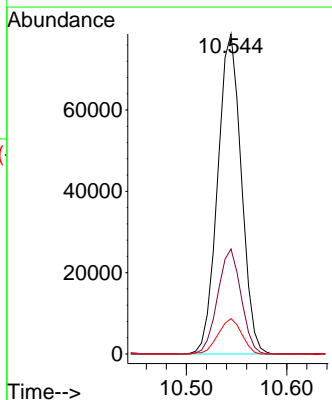
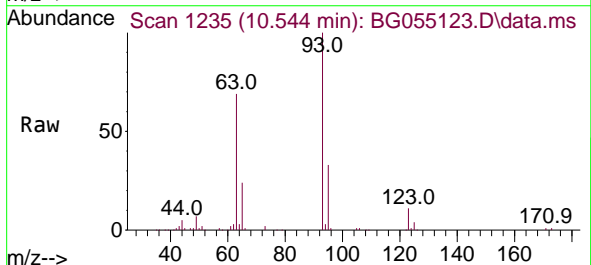
Ion	Ratio	Lower	Upper
122	100		
107	118.8	96.0	144.0
121	60.7	51.7	77.5

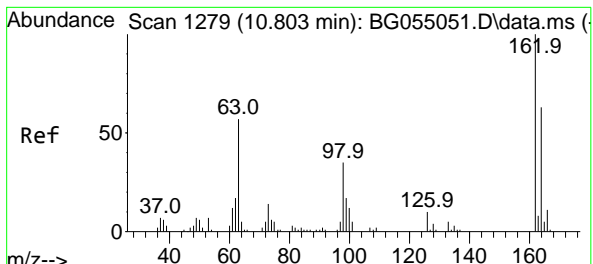


#28
 bis(2-Chloroethoxy)methane
 Concen: 45.084 ng
 RT: 10.544 min Scan# 1235
 Delta R.T. -0.008 min
 Lab File: BG055123.D
 Acq: 11 Oct 2022 11:33

Tgt Ion: 93 Resp: 128419

Ion	Ratio	Lower	Upper
93	100		
95	32.8	25.6	38.4
123	11.0	7.7	11.5



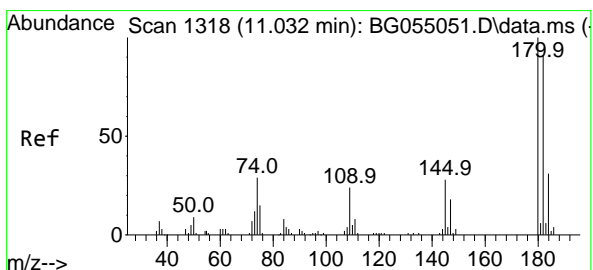
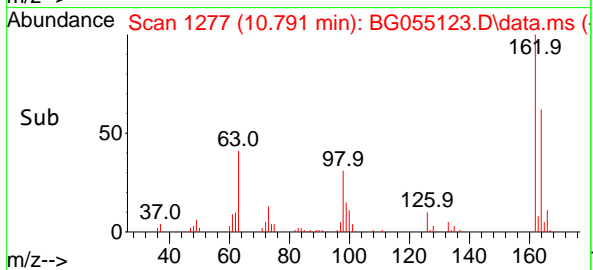
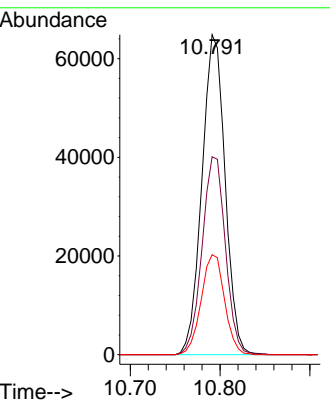
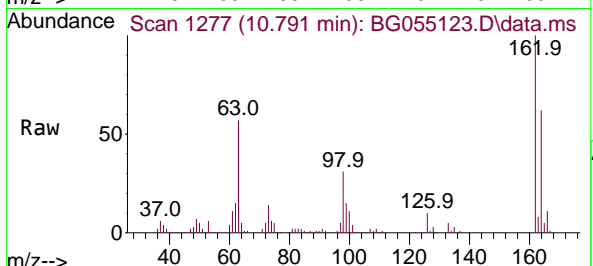


#29
 2,4-Dichlorophenol
 Concen: 49.633 ng
 RT: 10.791 min Scan# 11
 Delta R.T. -0.008 min
 Lab File: BG055123.D
 Acq: 11 Oct 2022 11:33

Instrument : BNA_G
 ClientSampleId : PB148225BS

Tgt Ion:162 Resp: 116168

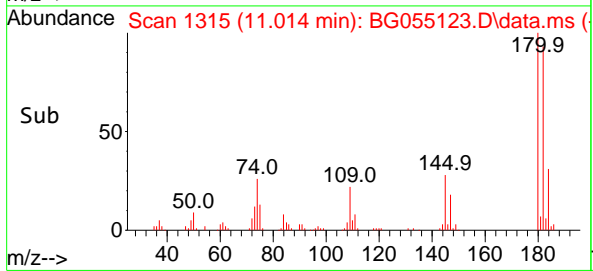
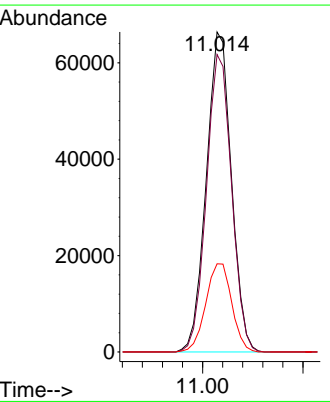
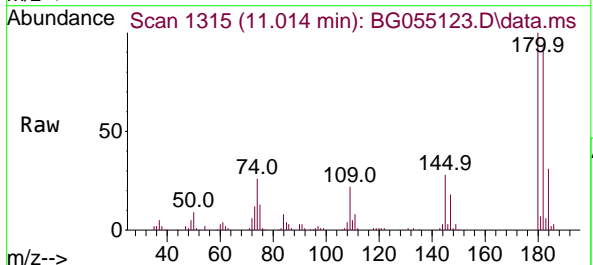
Ion	Ratio	Lower	Upper
162	100		
164	61.9	42.9	82.9
98	31.2	14.7	54.7

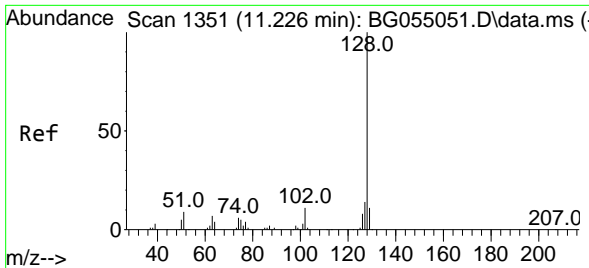


#30
 1,2,4-Trichlorobenzene
 Concen: 42.026 ng
 RT: 11.014 min Scan# 1315
 Delta R.T. -0.008 min
 Lab File: BG055123.D
 Acq: 11 Oct 2022 11:33

Tgt Ion:180 Resp: 114871

Ion	Ratio	Lower	Upper
180	100		
182	92.9	72.6	109.0
145	27.5	22.5	33.7





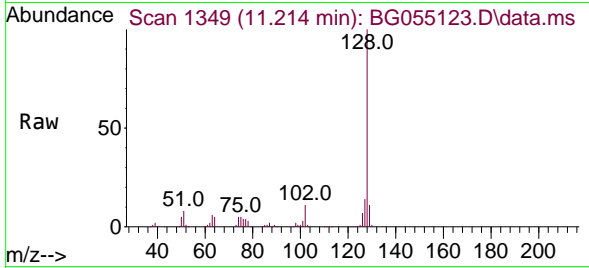
#31
 Naphthalene
 Concen: 39.625 ng
 RT: 11.214 min Scan# 11
 Delta R.T. -0.003 min
 Lab File: BG055123.D
 Acq: 11 Oct 2022 11:33

Instrument :

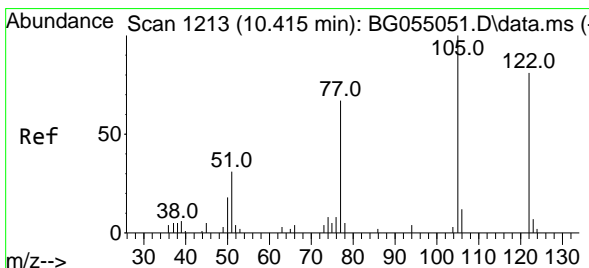
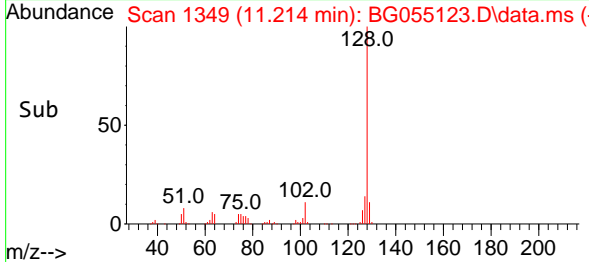
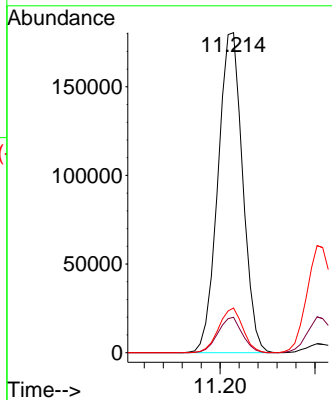
BNA_G

ClientSampleId :

PB148225BS

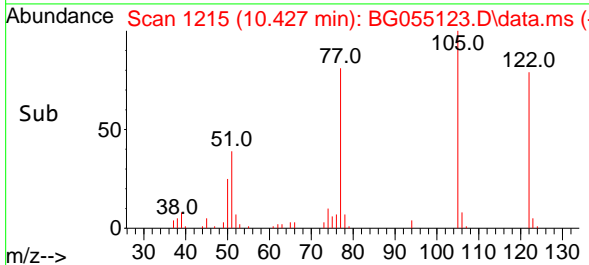
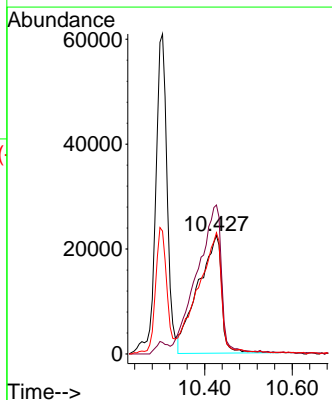
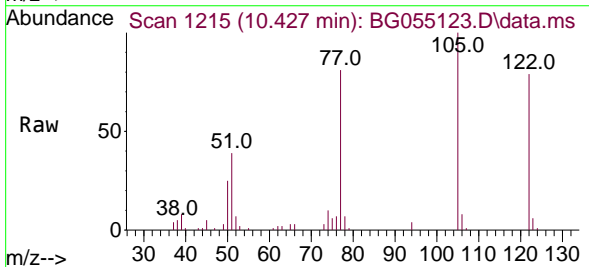


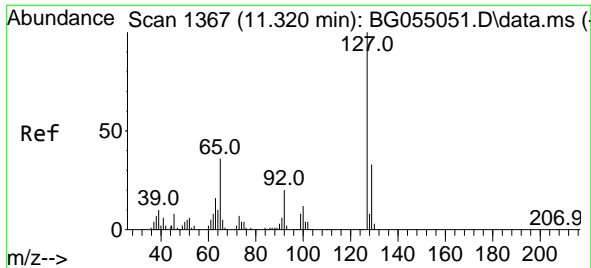
Tgt Ion:128 Resp: 327310
 Ion Ratio Lower Upper
 128 100
 129 11.0 8.7 13.1
 127 14.0 10.9 16.3



#32
 Benzoic acid
 Concen: 63.066 ng
 RT: 10.427 min Scan# 1215
 Delta R.T. 0.009 min
 Lab File: BG055123.D
 Acq: 11 Oct 2022 11:33

Tgt Ion:122 Resp: 84775
 Ion Ratio Lower Upper
 122 100
 105 125.8 98.8 138.8
 77 102.4 65.2 105.2





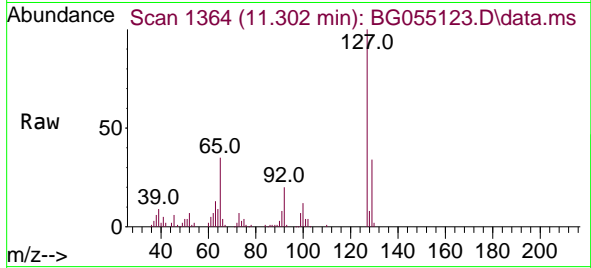
#33
 4-Chloroaniline
 Concen: 33.224 ng
 RT: 11.302 min Scan# 11
 Delta R.T. -0.008 min
 Lab File: BG055123.D
 Acq: 11 Oct 2022 11:33

Instrument :

BNA_G

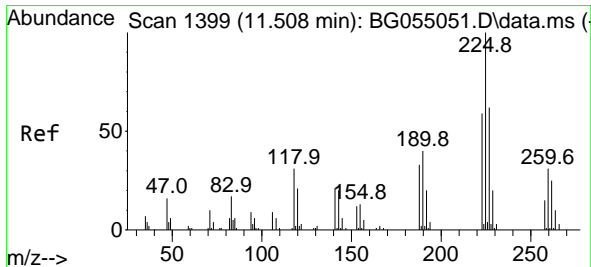
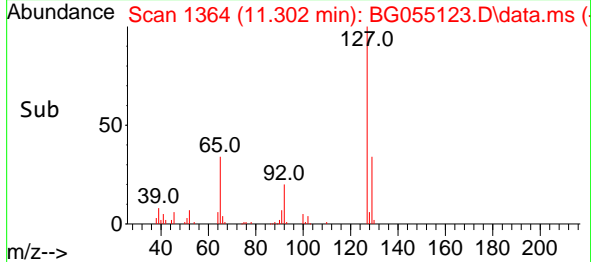
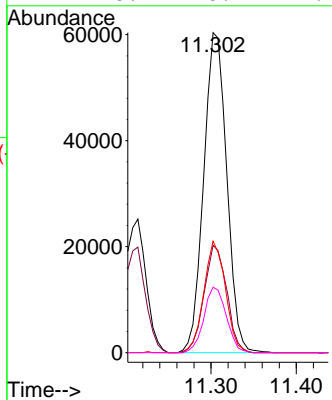
ClientSampleId :

PB148225BS



Tgt Ion:127 Resp: 113481

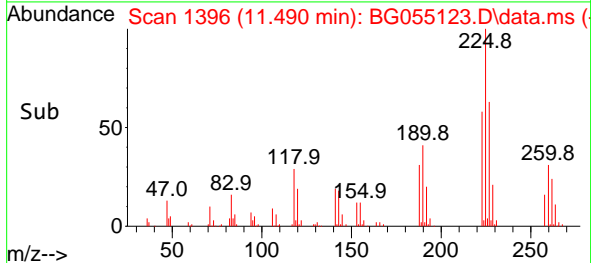
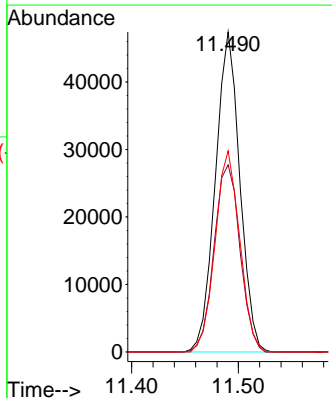
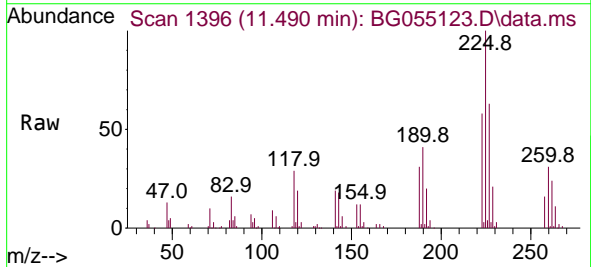
Ion	Ratio	Lower	Upper
127	100		
129	33.5	26.4	39.6
65	34.8	28.6	43.0
92	20.4	16.2	24.2

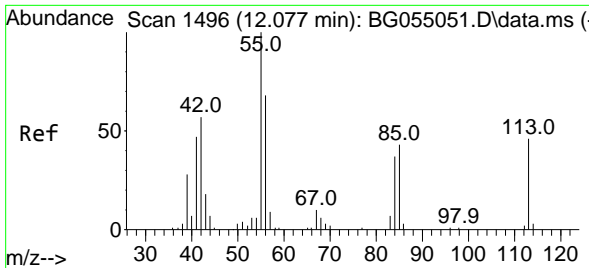


#34
 Hexachlorobutadiene
 Concen: 42.535 ng
 RT: 11.490 min Scan# 1396
 Delta R.T. -0.008 min
 Lab File: BG055123.D
 Acq: 11 Oct 2022 11:33

Tgt Ion:225 Resp: 75388

Ion	Ratio	Lower	Upper
225	100		
223	58.4	47.5	71.3
227	62.8	49.8	74.8



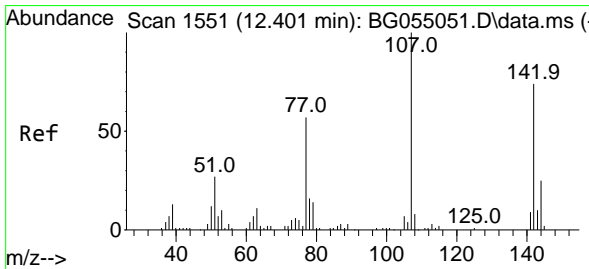
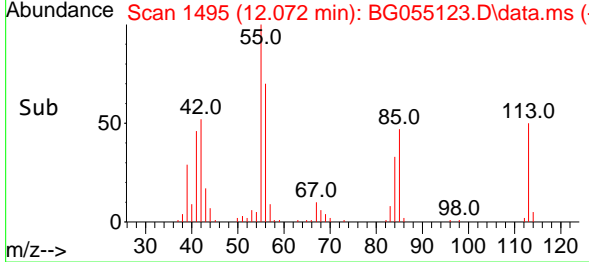
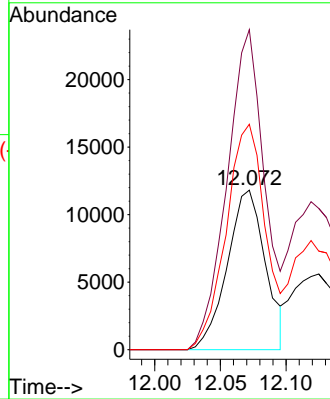
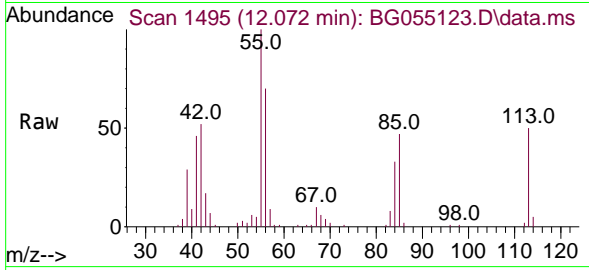


#35
 Caprolactam
 Concen: 32.169 ng
 RT: 12.072 min Scan# 1495
 Delta R.T. -0.002 min
 Lab File: BG055123.D
 Acq: 11 Oct 2022 11:33

Instrument :
 BNA_G
 ClientSampleId :
 PB148225BS

Tgt Ion:113 Resp: 23881

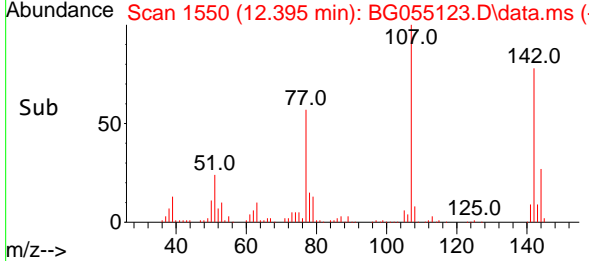
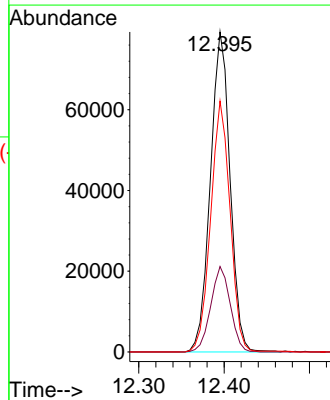
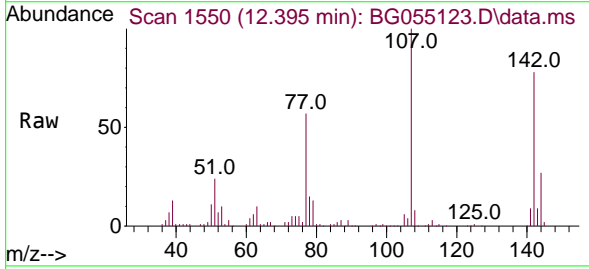
Ion	Ratio	Lower	Upper
113	100		
55	200.5	199.4	239.4
56	141.3	130.0	170.0

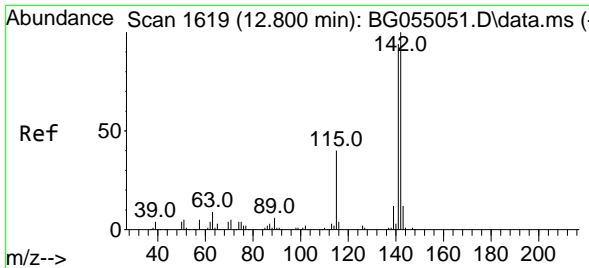


#36
 4-Chloro-3-methylphenol
 Concen: 47.673 ng
 RT: 12.395 min Scan# 1550
 Delta R.T. -0.002 min
 Lab File: BG055123.D
 Acq: 11 Oct 2022 11:33

Tgt Ion:107 Resp: 127002

Ion	Ratio	Lower	Upper
107	100		
144	26.7	19.7	29.5
142	78.4	59.3	88.9



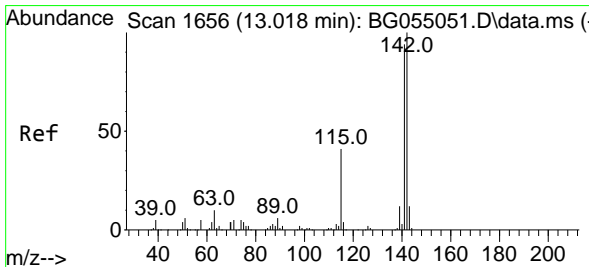
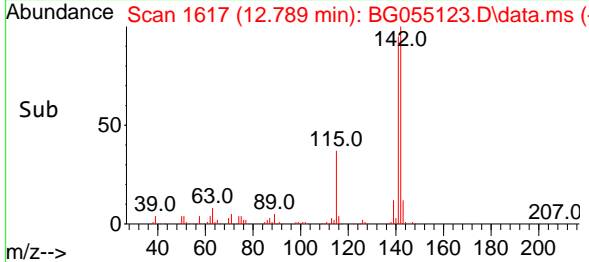
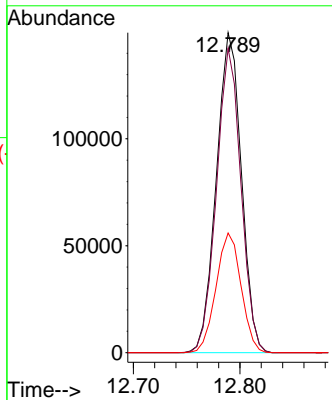
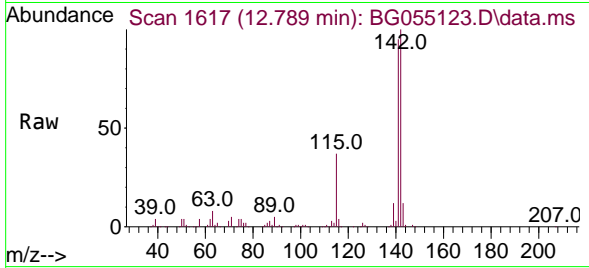


#37
 2-Methylnaphthalene
 Concen: 39.992 ng
 RT: 12.789 min Scan# 1
 Delta R.T. -0.008 min
 Lab File: BG055123.D
 Acq: 11 Oct 2022 11:33

Instrument :
 BNA_G
 ClientSampleId :
 PB148225BS

Tgt Ion:142 Resp: 243443

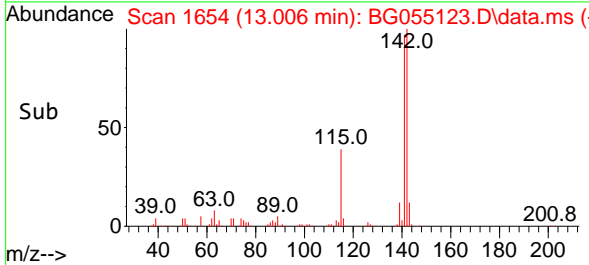
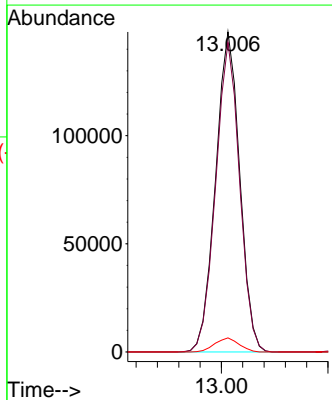
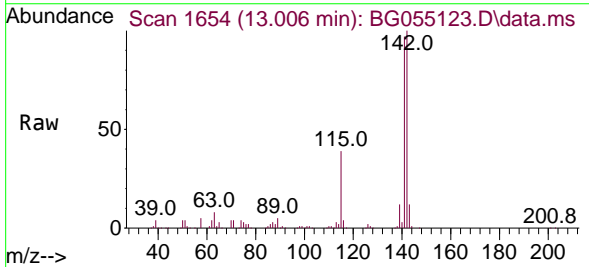
Ion	Ratio	Lower	Upper
142	100		
141	95.1	75.0	112.4
115	37.4	31.7	47.5

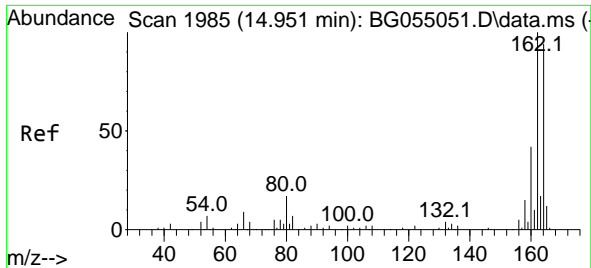


#38
 1-Methylnaphthalene
 Concen: 39.248 ng
 RT: 13.006 min Scan# 1654
 Delta R.T. -0.008 min
 Lab File: BG055123.D
 Acq: 11 Oct 2022 11:33

Tgt Ion:142 Resp: 232392

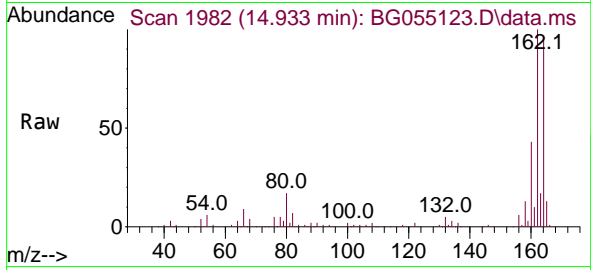
Ion	Ratio	Lower	Upper
142	100		
141	96.8	75.5	113.3
116	4.4	3.4	5.2



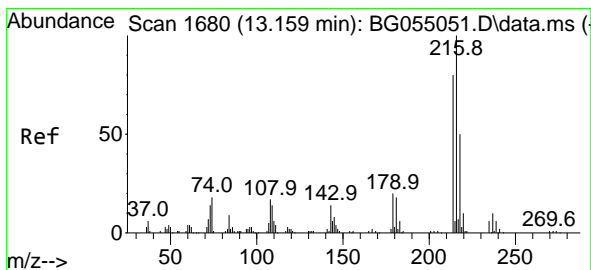
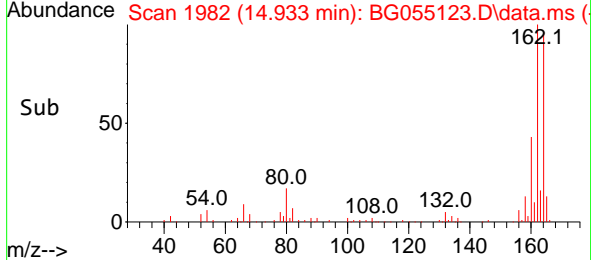
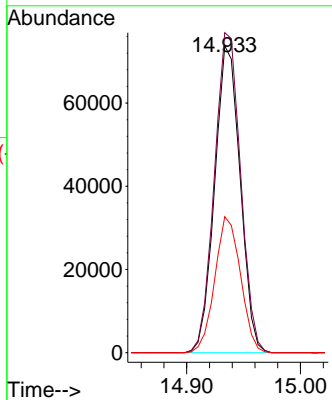


#39
 Acenaphthene-d10
 Concen: 20.000 ng
 RT: 14.933 min Scan# 1982
 Delta R.T. -0.008 min
 Lab File: BG055123.D
 Acq: 11 Oct 2022 11:33

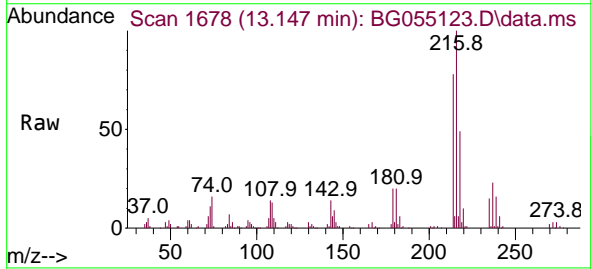
Instrument :
 BNA_G
 ClientSampleId :
 PB148225BS



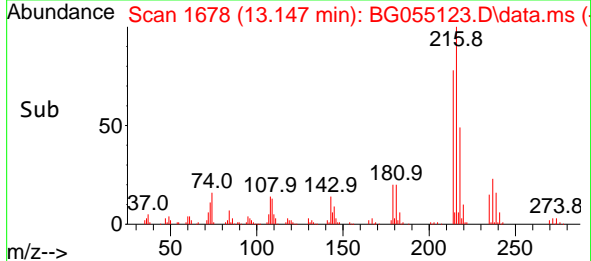
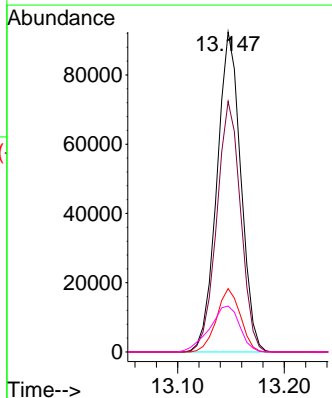
Tgt Ion:164 Resp: 114875
 Ion Ratio Lower Upper
 164 100
 162 104.3 85.5 128.3
 160 44.3 35.5 53.3

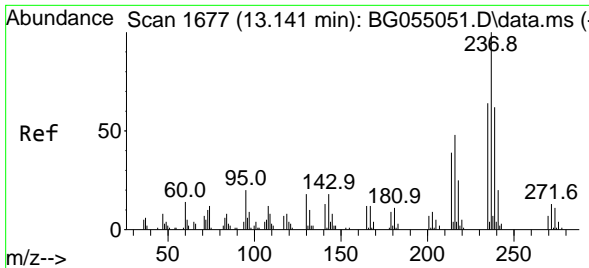


#40
 1,2,4,5-Tetrachlorobenzene
 Concen: 42.817 ng
 RT: 13.147 min Scan# 1678
 Delta R.T. -0.008 min
 Lab File: BG055123.D
 Acq: 11 Oct 2022 11:33



Tgt Ion:216 Resp: 143613
 Ion Ratio Lower Upper
 216 100
 214 78.2 63.4 95.2
 179 19.8 15.9 23.9
 108 18.1 13.8 20.6





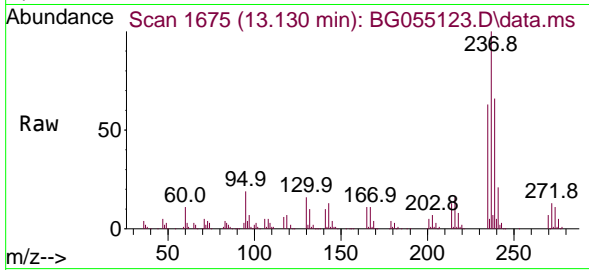
#41
 Hexachlorocyclopentadiene
 Concen: 130.048 ng
 RT: 13.130 min Scan# 10
 Delta R.T. -0.008 min
 Lab File: BG055123.D
 Acq: 11 Oct 2022 11:33

Instrument :

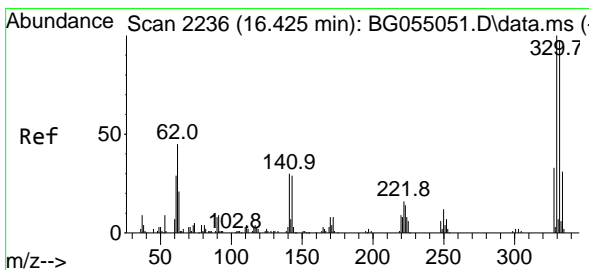
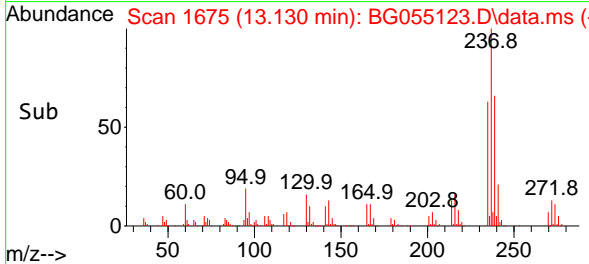
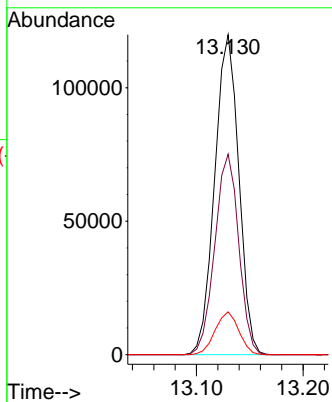
BNA_G

ClientSampleId :

PB148225BS

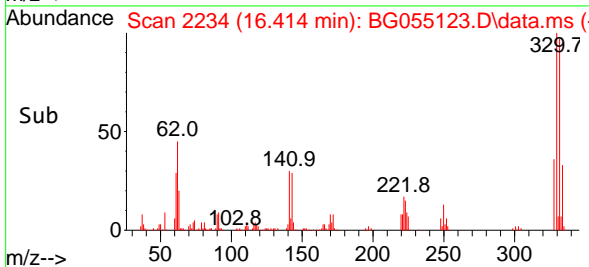
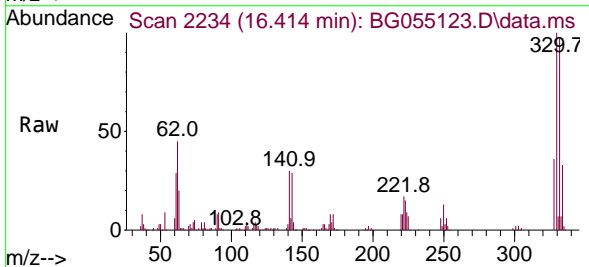
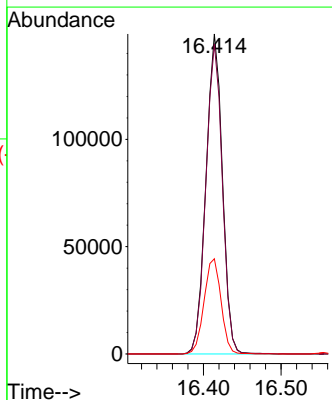


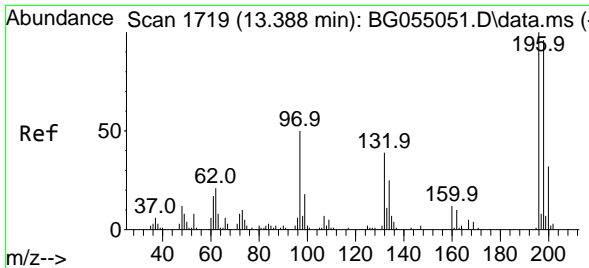
Tgt Ion:237 Resp: 187832
 Ion Ratio Lower Upper
 237 100
 235 62.6 43.8 83.8
 272 13.4 0.0 32.7



#42
 2,4,6-Tribromophenol
 Concen: 181.502 ng
 RT: 16.414 min Scan# 2234
 Delta R.T. -0.002 min
 Lab File: BG055123.D
 Acq: 11 Oct 2022 11:33

Tgt Ion:330 Resp: 219797
 Ion Ratio Lower Upper
 330 100
 332 97.1 77.4 116.0
 141 30.7 25.0 37.4



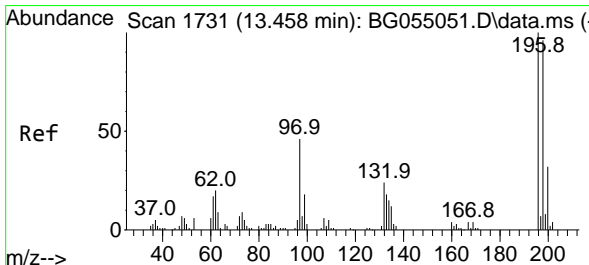
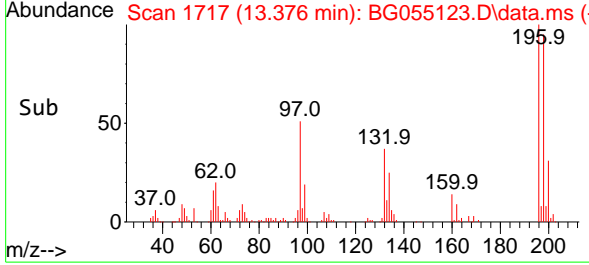
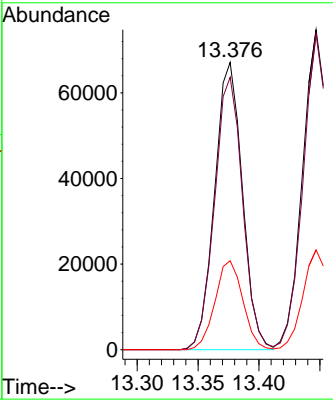
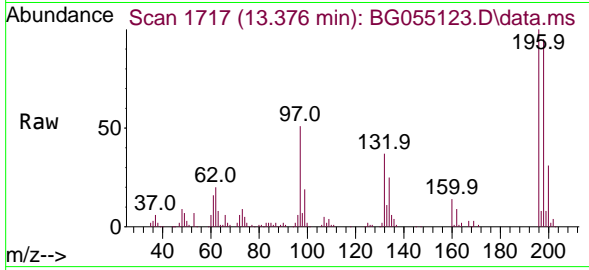


#43
 2,4,6-Trichlorophenol
 Concen: 51.757 ng
 RT: 13.376 min Scan# 1717
 Delta R.T. -0.008 min
 Lab File: BG055123.D
 Acq: 11 Oct 2022 11:33

Instrument : BNA_G
 ClientSampleId : PB148225BS

Tgt Ion:196 Resp: 106412

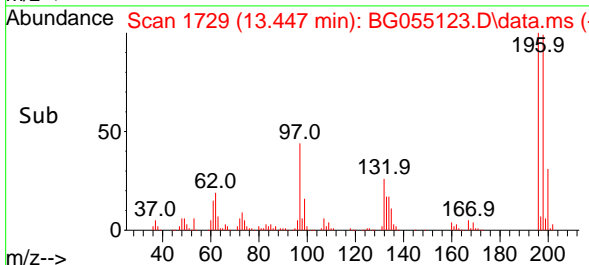
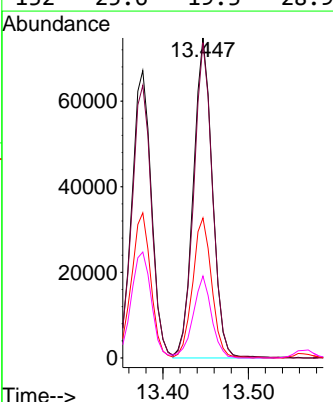
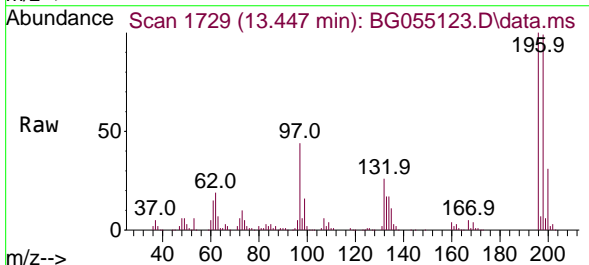
Ion	Ratio	Lower	Upper
196	100		
198	94.8	76.5	114.7
200	31.0	25.6	38.4

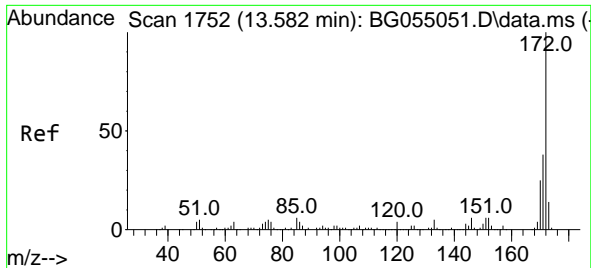


#44
 2,4,5-Trichlorophenol
 Concen: 50.013 ng
 RT: 13.447 min Scan# 1729
 Delta R.T. -0.002 min
 Lab File: BG055123.D
 Acq: 11 Oct 2022 11:33

Tgt Ion:196 Resp: 115758

Ion	Ratio	Lower	Upper
196	100		
198	98.6	76.8	115.2
97	43.7	37.1	55.7
132	25.6	19.3	28.9





#45
 2-Fluorobiphenyl
 Concen: 79.623 ng
 RT: 13.564 min Scan# 1749
 Delta R.T. -0.008 min
 Lab File: BG055123.D
 Acq: 11 Oct 2022 11:33

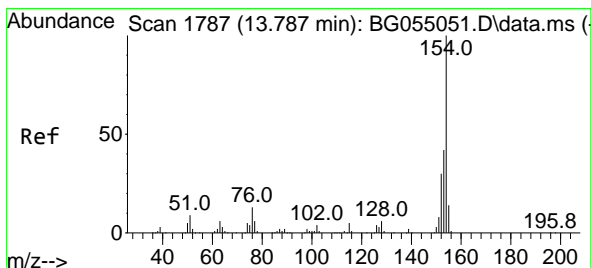
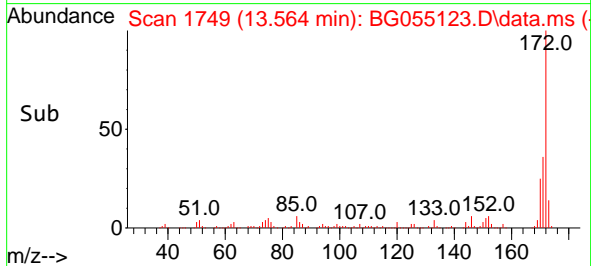
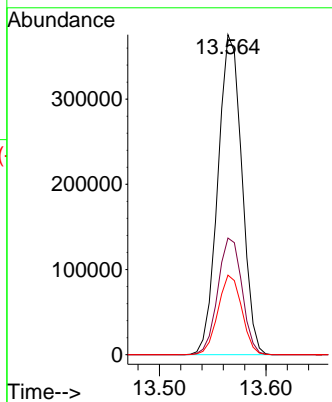
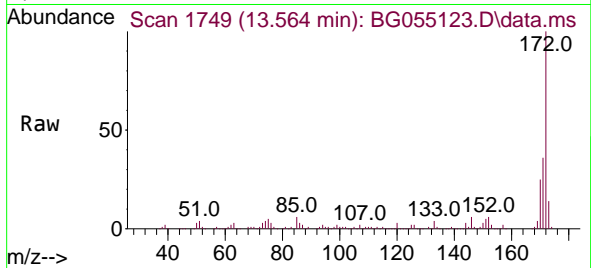
Instrument :

BNA_G

ClientSampleId :

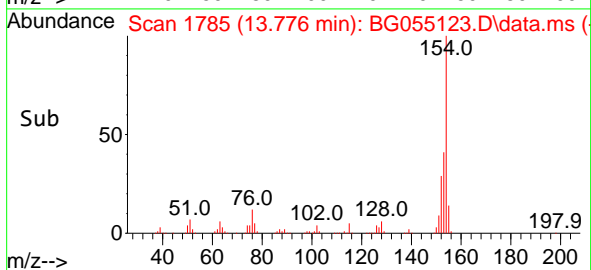
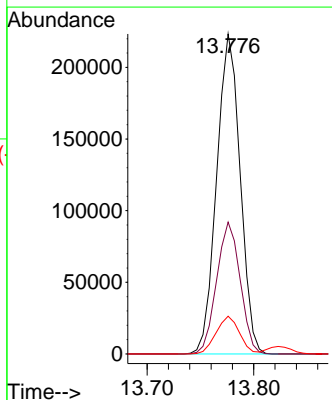
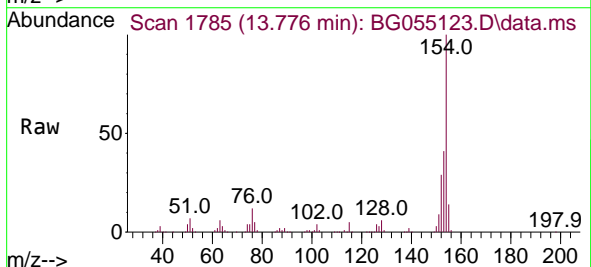
PB148225BS

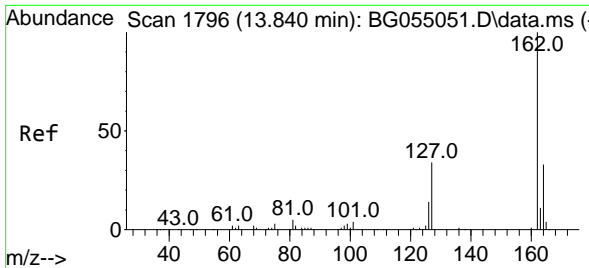
Tgt Ion:172 Resp: 585904
 Ion Ratio Lower Upper
 172 100
 171 36.5 30.1 45.1
 170 24.9 20.0 30.0



#46
 1,1'-Biphenyl
 Concen: 43.298 ng
 RT: 13.776 min Scan# 1785
 Delta R.T. -0.008 min
 Lab File: BG055123.D
 Acq: 11 Oct 2022 11:33

Tgt Ion:154 Resp: 341027
 Ion Ratio Lower Upper
 154 100
 153 41.2 22.0 62.0
 76 11.8 0.0 33.3



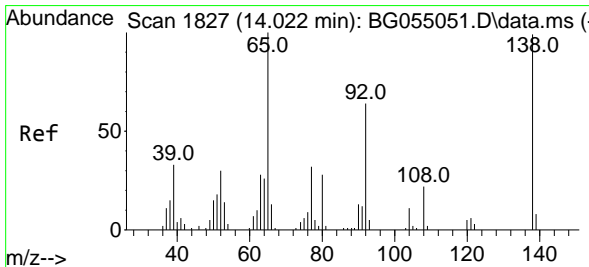
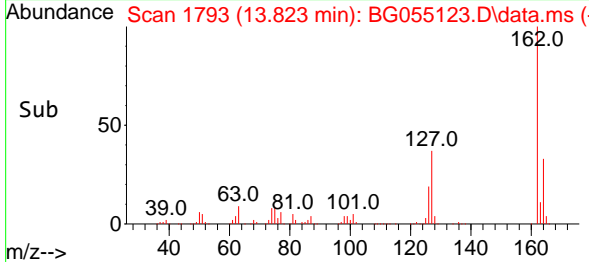
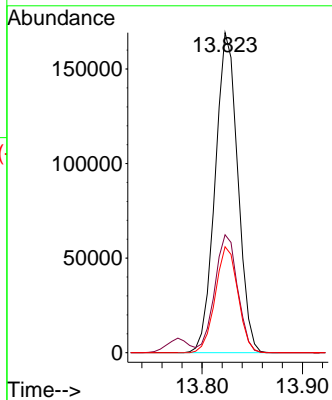
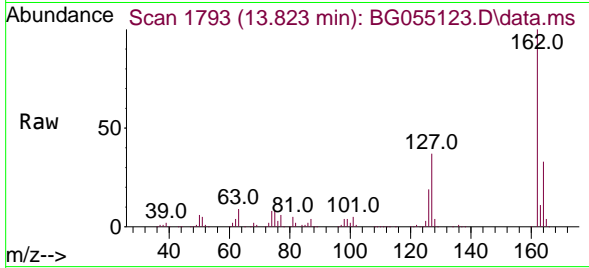


#47
 2-Chloronaphthalene
 Concen: 41.656 ng
 RT: 13.823 min Scan# 11
 Delta R.T. -0.008 min
 Lab File: BG055123.D
 Acq: 11 Oct 2022 11:33

Instrument : BNA_G
 ClientSampleId : PB148225BS

Tgt Ion:162 Resp: 264375

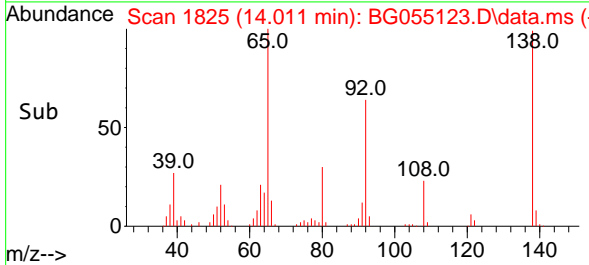
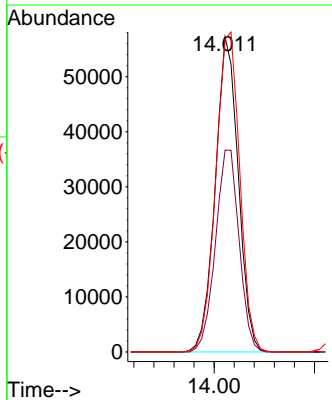
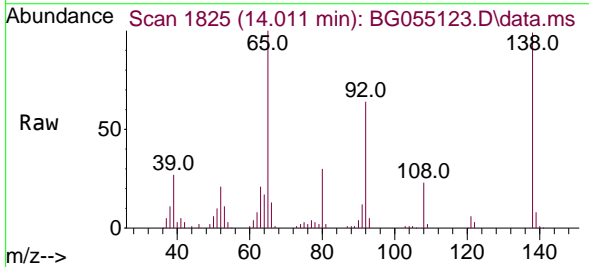
Ion	Ratio	Lower	Upper
162	100		
127	36.9	30.7	46.1
164	33.1	26.3	39.5

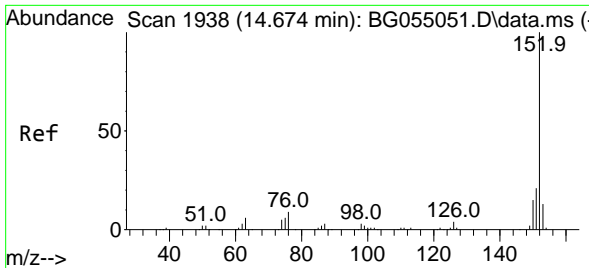


#48
 2-Nitroaniline
 Concen: 50.763 ng
 RT: 14.011 min Scan# 1825
 Delta R.T. -0.008 min
 Lab File: BG055123.D
 Acq: 11 Oct 2022 11:33

Tgt Ion: 65 Resp: 91111

Ion	Ratio	Lower	Upper
65	100		
92	64.1	50.9	76.3
138	99.2	79.5	119.3





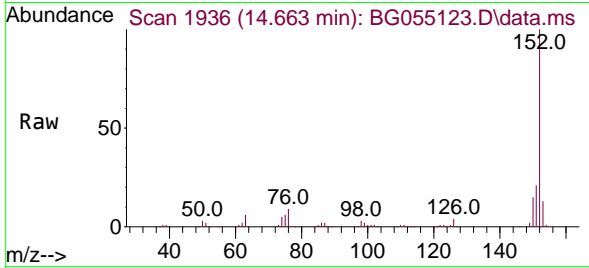
#49
 Acenaphthylene
 Concen: 41.025 ng
 RT: 14.663 min Scan# 1936
 Delta R.T. -0.008 min
 Lab File: BG055123.D
 Acq: 11 Oct 2022 11:33

Instrument :

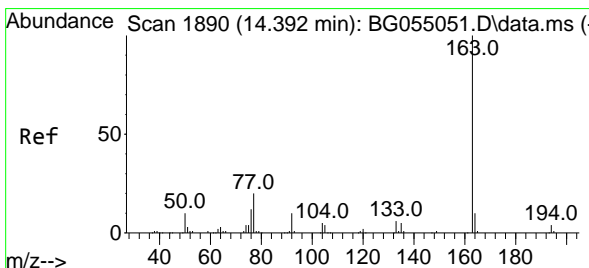
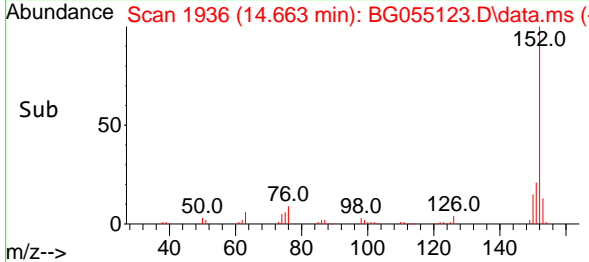
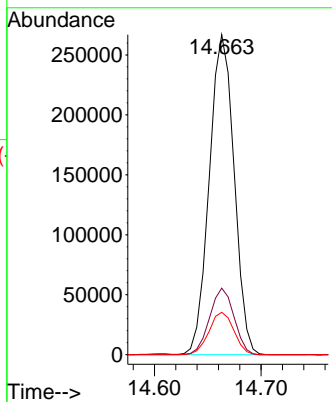
BNA_G

ClientSampleId :

PB148225BS

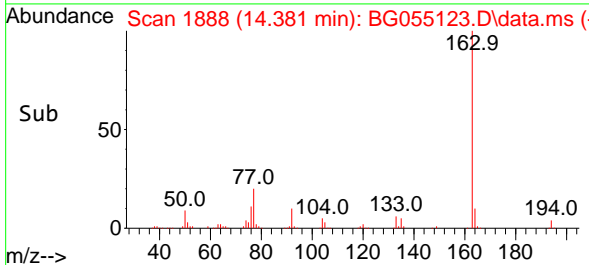
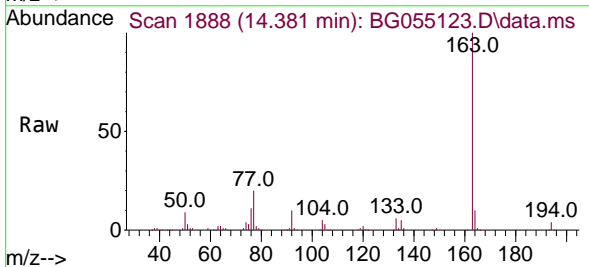
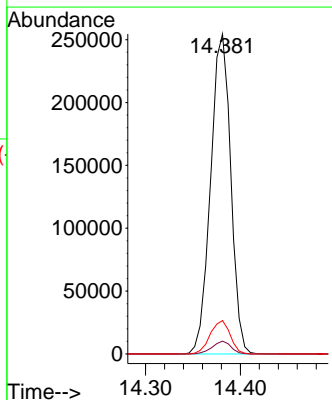


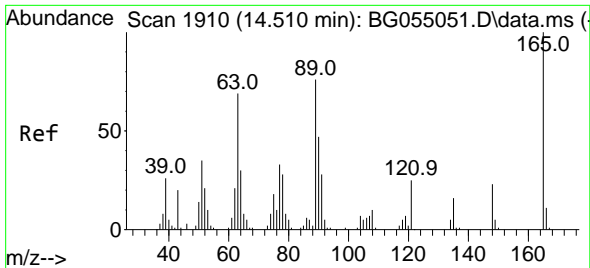
Tgt Ion:152 Resp: 431163
 Ion Ratio Lower Upper
 152 100
 151 20.8 16.6 24.8
 153 13.3 10.7 16.1



#50
 Dimethylphthalate
 Concen: 48.123 ng
 RT: 14.381 min Scan# 1888
 Delta R.T. -0.002 min
 Lab File: BG055123.D
 Acq: 11 Oct 2022 11:33

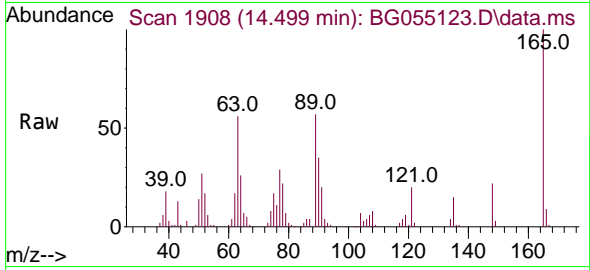
Tgt Ion:163 Resp: 375210
 Ion Ratio Lower Upper
 163 100
 194 4.0 2.9 4.3
 164 10.4 7.9 11.9



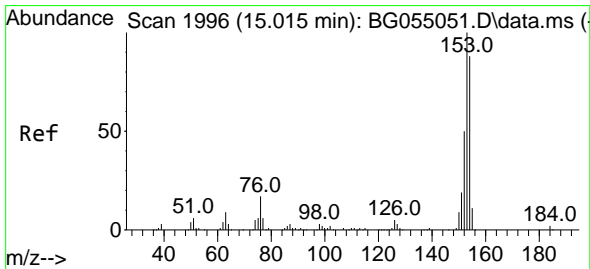
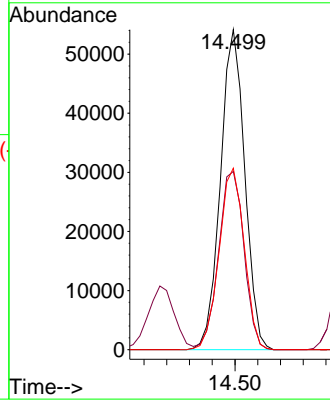
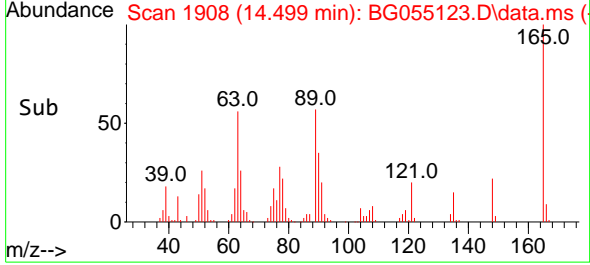


#51
 2,6-Dinitrotoluene
 Concen: 50.122 ng
 RT: 14.499 min Scan# 1908
 Delta R.T. -0.008 min
 Lab File: BG055123.D
 Acq: 11 Oct 2022 11:33

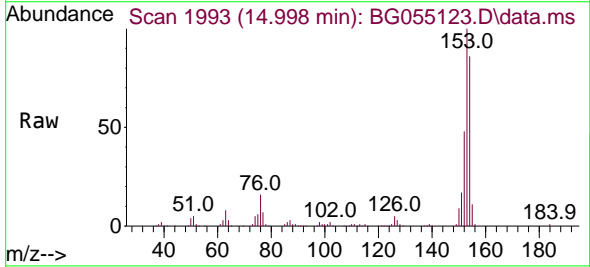
Instrument :
 BNA_G
 ClientSampleId :
 PB148225BS



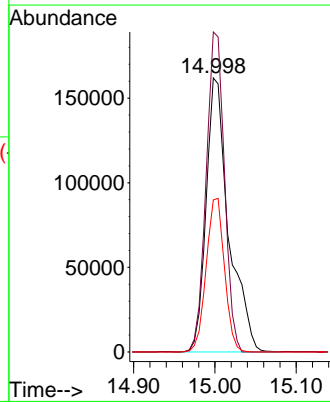
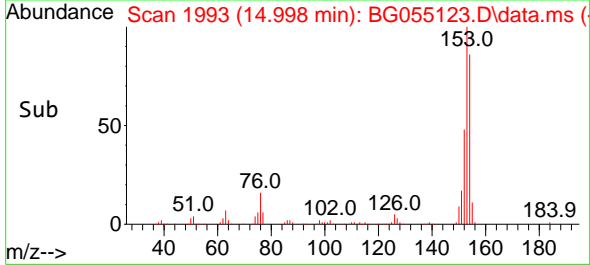
Tgt Ion:165 Resp: 80318
 Ion Ratio Lower Upper
 165 100
 63 55.7 56.2 84.4#
 89 56.7 60.4 90.6#

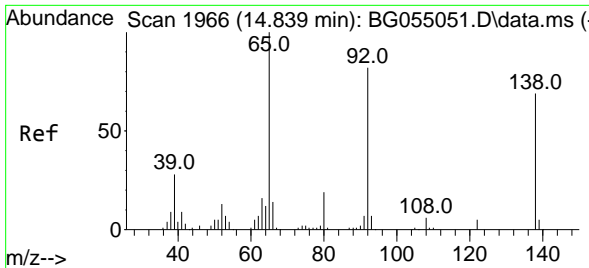


#52
 Acenaphthene
 Concen: 48.036 ng
 RT: 14.998 min Scan# 1993
 Delta R.T. -0.008 min
 Lab File: BG055123.D
 Acq: 11 Oct 2022 11:33



Tgt Ion:154 Resp: 313469
 Ion Ratio Lower Upper
 154 100
 153 116.8 91.4 137.0
 152 55.5 45.3 67.9





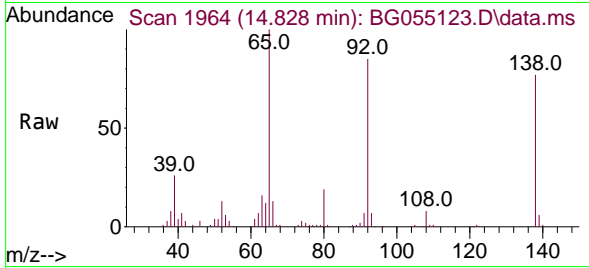
#53
 3-Nitroaniline
 Concen: 40.361 ng
 RT: 14.828 min Scan# 1964
 Delta R.T. -0.008 min
 Lab File: BG055123.D
 Acq: 11 Oct 2022 11:33

Instrument :

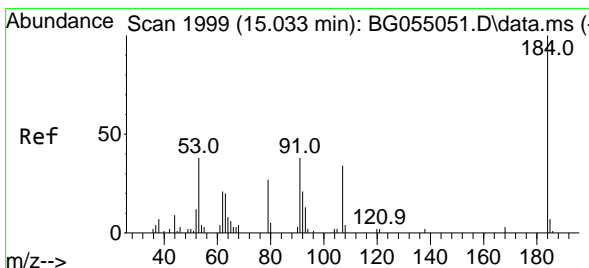
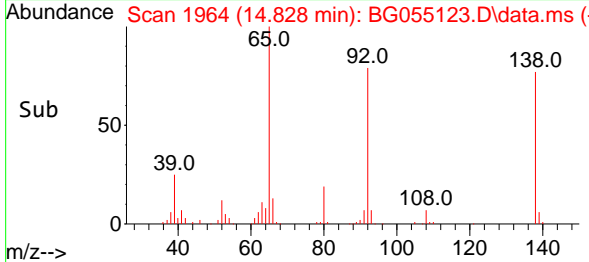
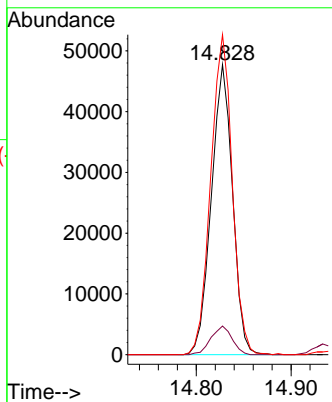
BNA_G

ClientSampleId :

PB148225BS

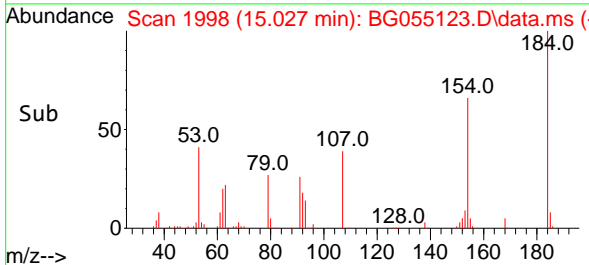
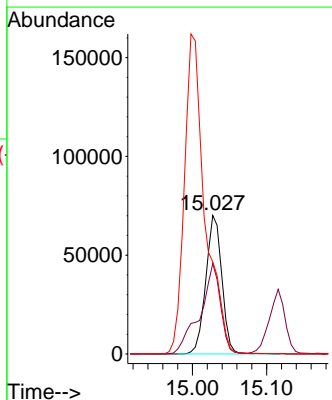
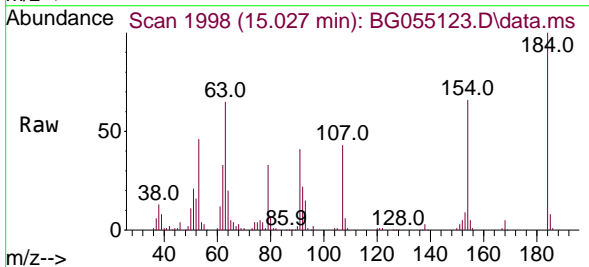


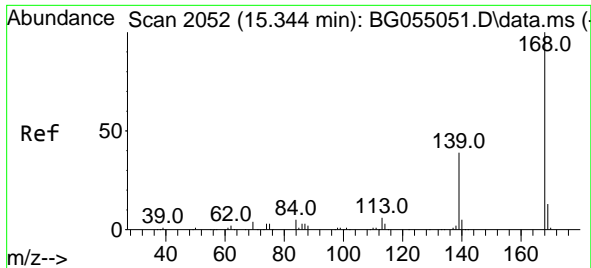
Tgt Ion:138 Resp: 74085
 Ion Ratio Lower Upper
 138 100
 108 9.9 6.9 10.3
 92 110.3 94.2 141.4



#54
 2,4-Dinitrophenol
 Concen: 145.457 ng
 RT: 15.027 min Scan# 1998
 Delta R.T. -0.002 min
 Lab File: BG055123.D
 Acq: 11 Oct 2022 11:33

Tgt Ion:184 Resp: 105415
 Ion Ratio Lower Upper
 184 100
 63 65.3 48.6 73.0
 154 66.5 128.5 192.7#

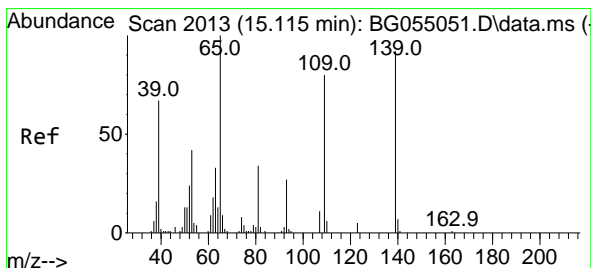
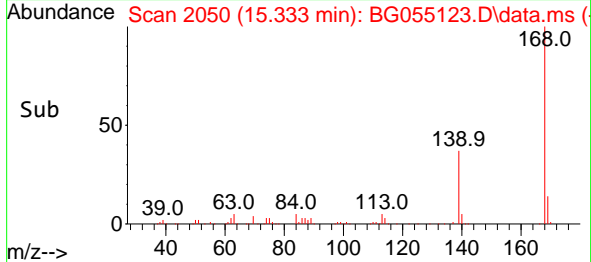
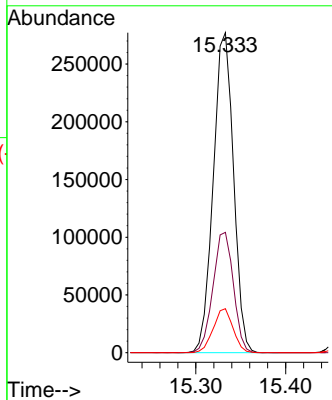
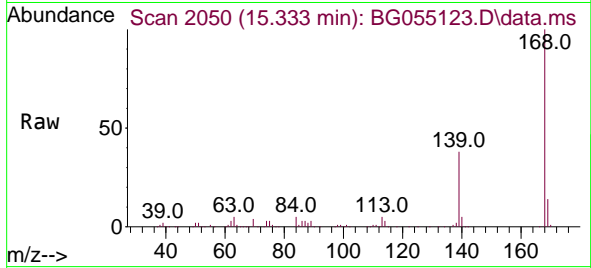




#55
 Dibenzofuran
 Concen: 41.617 ng
 RT: 15.333 min Scan# 2050
 Delta R.T. -0.003 min
 Lab File: BG055123.D
 Acq: 11 Oct 2022 11:33

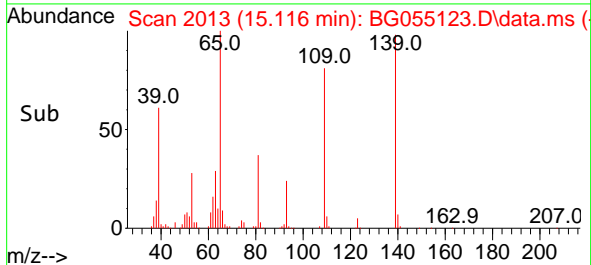
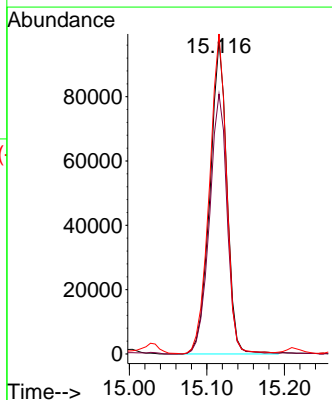
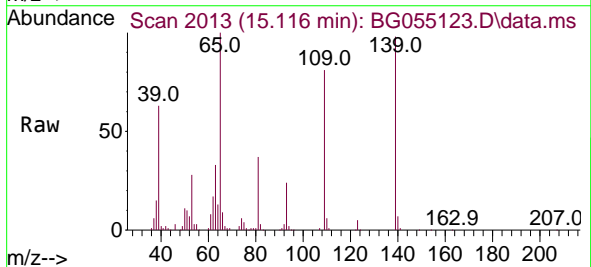
Instrument :
 BNA_G
 ClientSampleId :
 PB148225BS

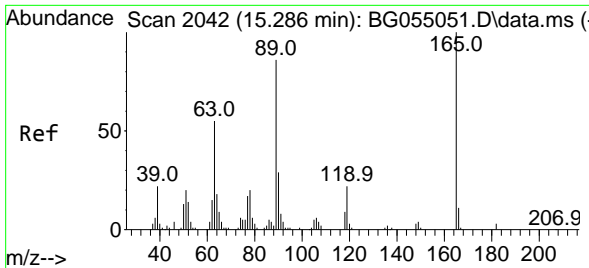
Tgt Ion:168 Resp: 433293
 Ion Ratio Lower Upper
 168 100
 139 37.6 31.0 46.4
 169 13.7 10.6 16.0



#56
 4-Nitrophenol
 Concen: 102.284 ng
 RT: 15.116 min Scan# 2013
 Delta R.T. 0.003 min
 Lab File: BG055123.D
 Acq: 11 Oct 2022 11:33

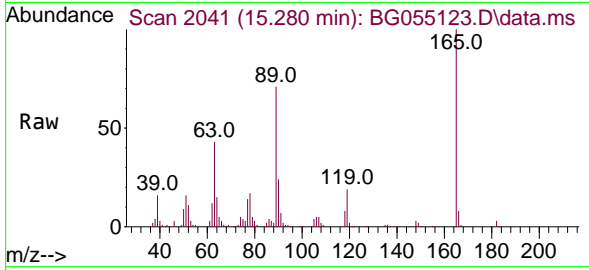
Tgt Ion:139 Resp: 148357
 Ion Ratio Lower Upper
 139 100
 109 83.2 66.6 106.6
 65 102.4 88.5 128.5



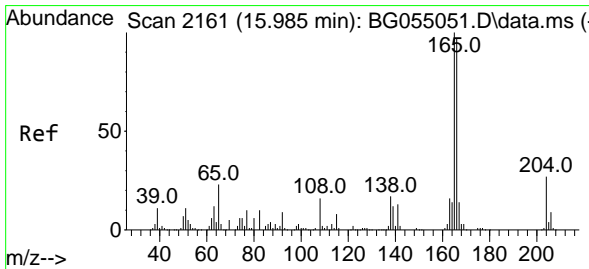
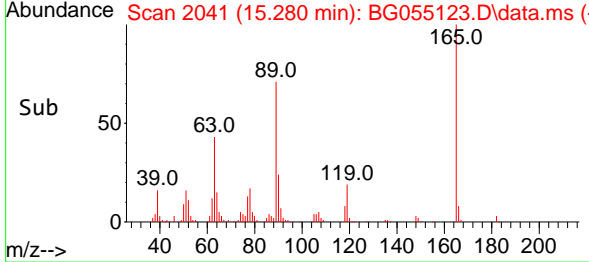
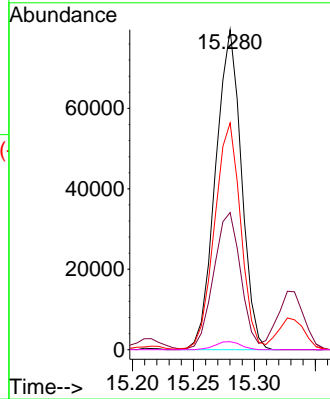


#57
 2,4-Dinitrotoluene
 Concen: 53.426 ng
 RT: 15.280 min Scan# 2041
 Delta R.T. -0.002 min
 Lab File: BG055123.D
 Acq: 11 Oct 2022 11:33

Instrument :
 BNA_G
 ClientSampleId :
 PB148225BS

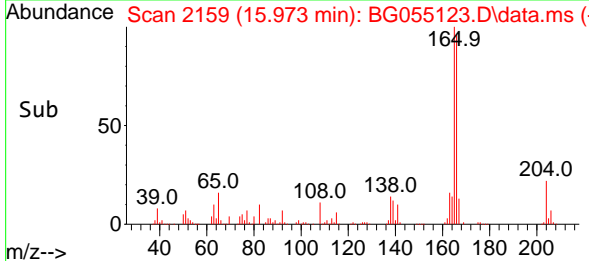
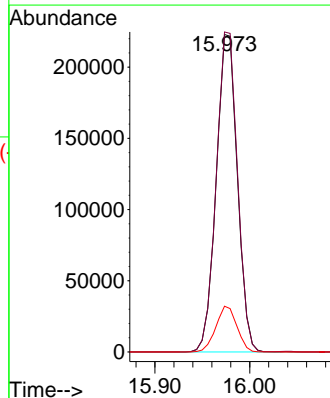
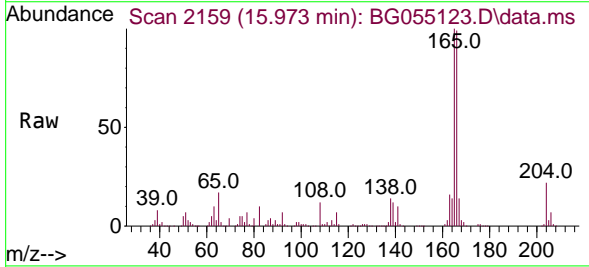


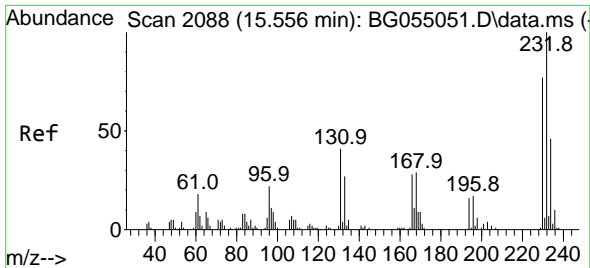
Tgt Ion:165 Resp: 117444
 Ion Ratio Lower Upper
 165 100
 63 42.8 44.2 66.2#
 89 70.9 69.0 103.6
 182 2.5 2.2 3.4



#58
 Fluorene
 Concen: 41.484 ng
 RT: 15.973 min Scan# 2159
 Delta R.T. -0.008 min
 Lab File: BG055123.D
 Acq: 11 Oct 2022 11:33

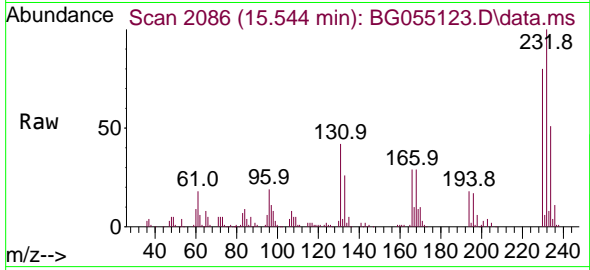
Tgt Ion:166 Resp: 345625
 Ion Ratio Lower Upper
 166 100
 165 100.8 82.6 123.8
 167 14.4 11.8 17.8



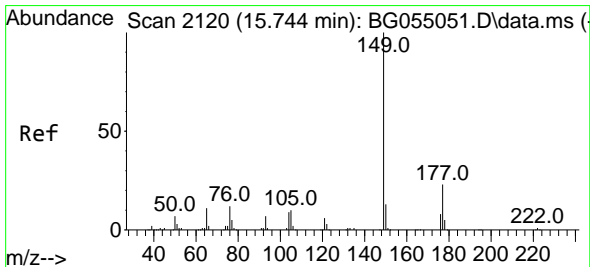
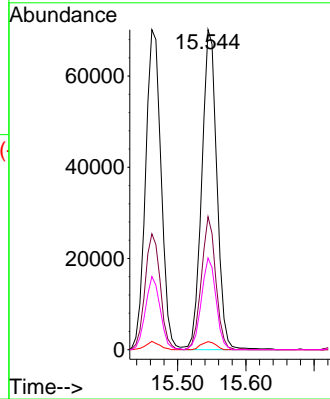
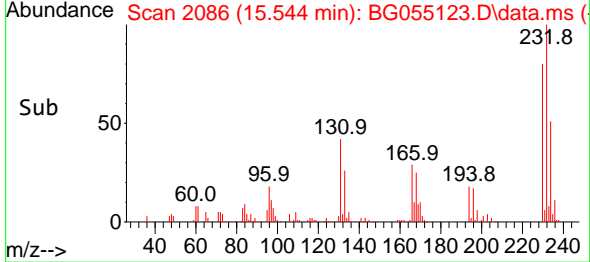


#59
 2,3,4,6-Tetrachlorophenol
 Concen: 50.339 ng
 RT: 15.544 min Scan# 2086
 Delta R.T. -0.008 min
 Lab File: BG055123.D
 Acq: 11 Oct 2022 11:33

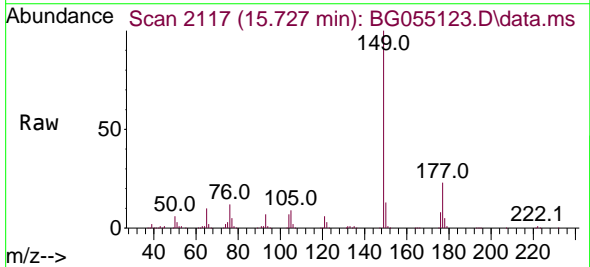
Instrument : BNA_G
 ClientSampleId : PB148225BS



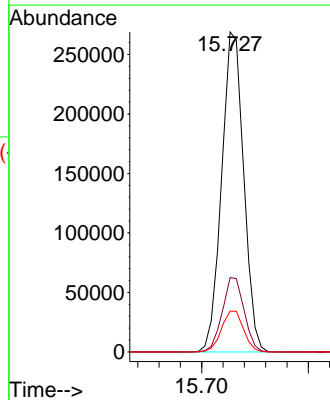
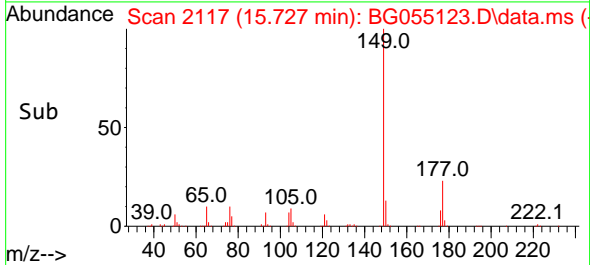
Tgt Ion:232 Resp: 107654
 Ion Ratio Lower Upper
 232 100
 131 39.5 32.7 49.1
 130 2.4 1.8 2.6
 166 27.8 22.2 33.2

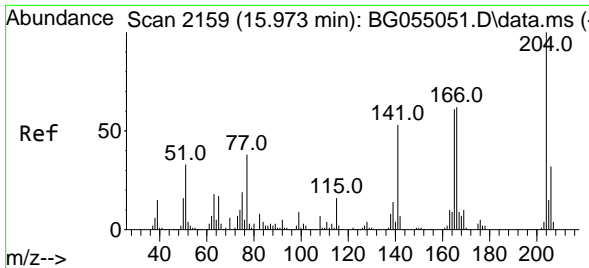


#60
 Diethylphthalate
 Concen: 47.975 ng
 RT: 15.727 min Scan# 2117
 Delta R.T. -0.008 min
 Lab File: BG055123.D
 Acq: 11 Oct 2022 11:33



Tgt Ion:149 Resp: 385959
 Ion Ratio Lower Upper
 149 100
 177 23.3 18.2 27.2
 150 12.8 10.1 15.1

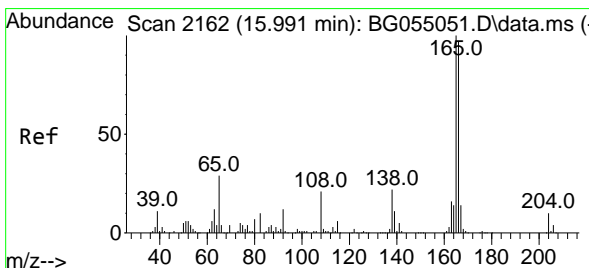
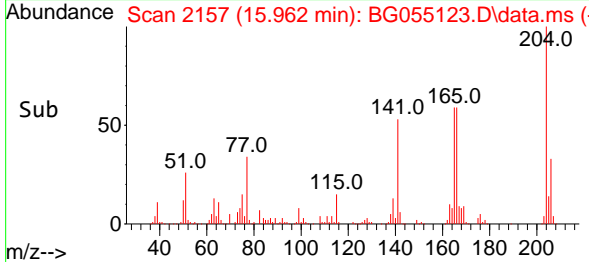
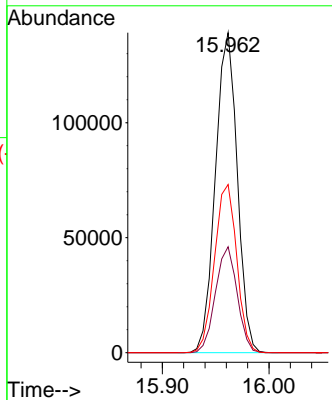
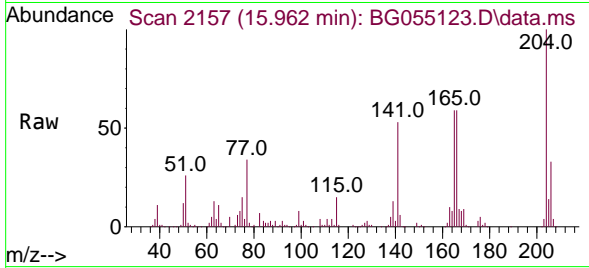




#61
 4-Chlorophenyl-phenylether
 Concen: 43.666 ng
 RT: 15.962 min Scan# 2159
 Delta R.T. -0.003 min
 Lab File: BG055123.D
 Acq: 11 Oct 2022 11:33

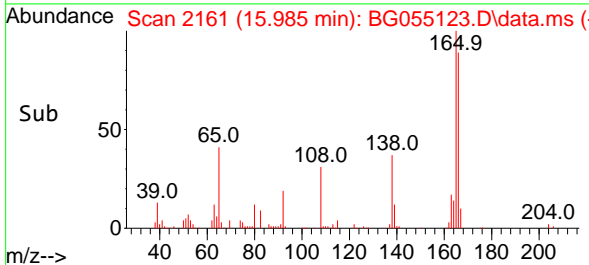
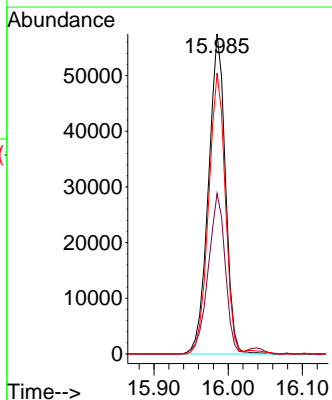
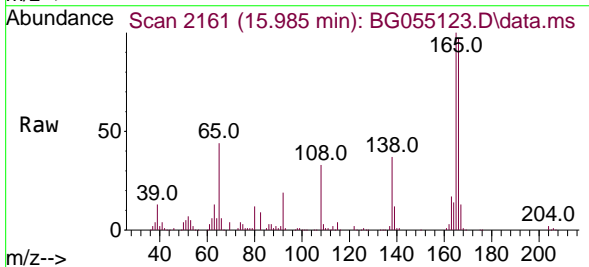
Instrument :
 BNA_G
 ClientSampleId :
 PB148225BS

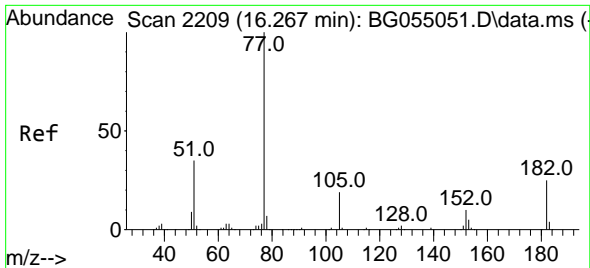
Tgt Ion:204 Resp: 197757
 Ion Ratio Lower Upper
 204 100
 206 33.1 25.5 38.3
 141 52.6 42.3 63.5



#62
 4-Nitroaniline
 Concen: 48.598 ng
 RT: 15.985 min Scan# 2161
 Delta R.T. -0.003 min
 Lab File: BG055123.D
 Acq: 11 Oct 2022 11:33

Tgt Ion:138 Resp: 91154
 Ion Ratio Lower Upper
 138 100
 92 50.2 35.3 75.3
 108 87.7 72.0 112.0



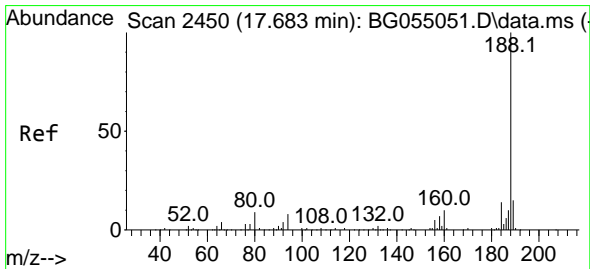
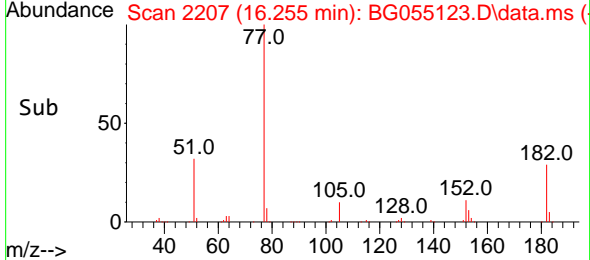
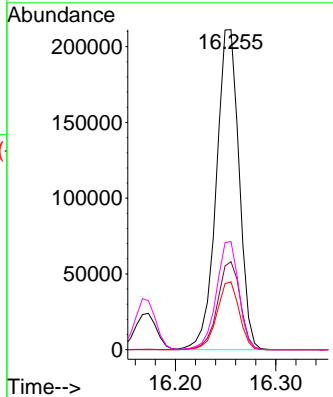
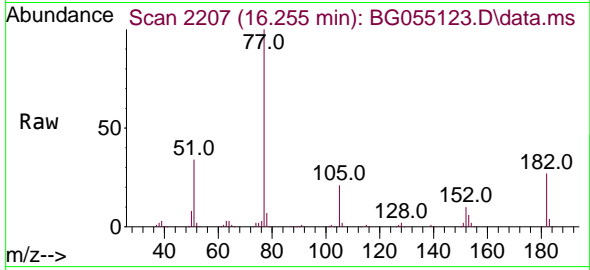


#63
 Azobenzene
 Concen: 36.739 ng
 RT: 16.255 min Scan# 21
 Delta R.T. -0.003 min
 Lab File: BG055123.D
 Acq: 11 Oct 2022 11:33

Instrument : BNA_G
 ClientSampleId : PB148225BS

Tgt Ion: 77 Resp: 332886

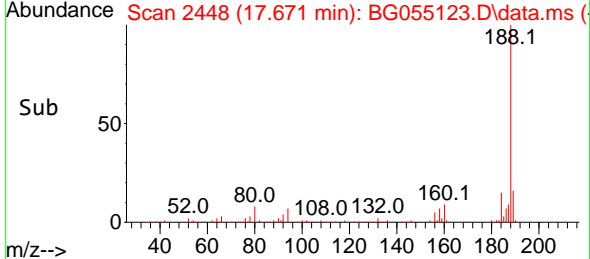
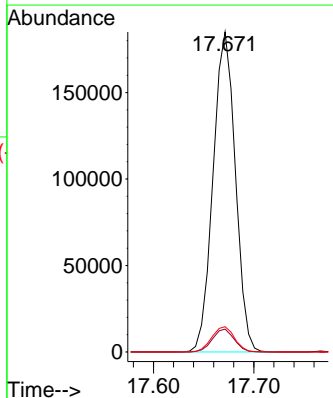
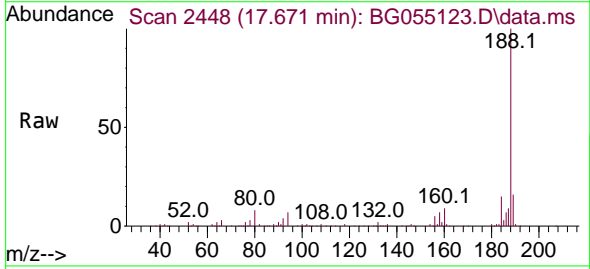
Ion	Ratio	Lower	Upper
77	100		
182	27.5	4.8	44.8
105	21.2	0.0	38.8
51	33.8	15.2	55.2

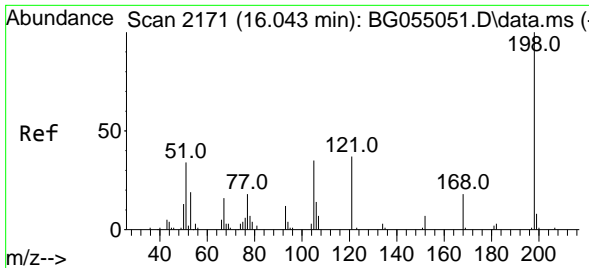


#64
 Phenanthrene-d10
 Concen: 20.000 ng
 RT: 17.671 min Scan# 2448
 Delta R.T. -0.003 min
 Lab File: BG055123.D
 Acq: 11 Oct 2022 11:33

Tgt Ion: 188 Resp: 284753

Ion	Ratio	Lower	Upper
188	100		
94	7.2	6.2	9.2
80	7.9	7.2	10.8

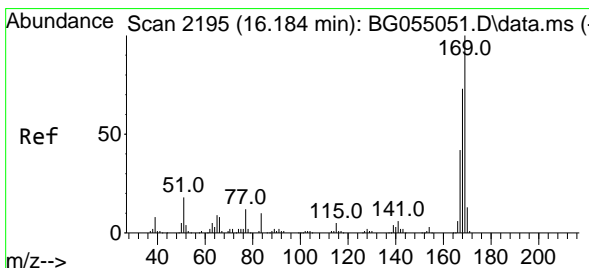
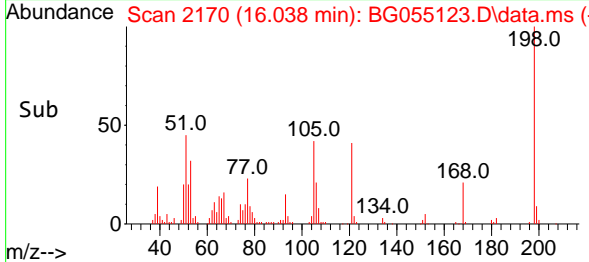
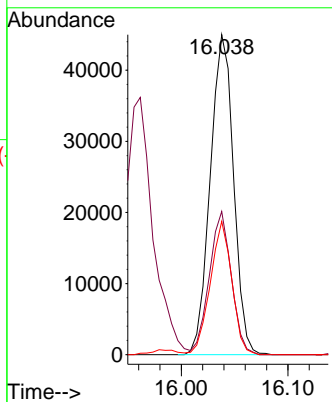
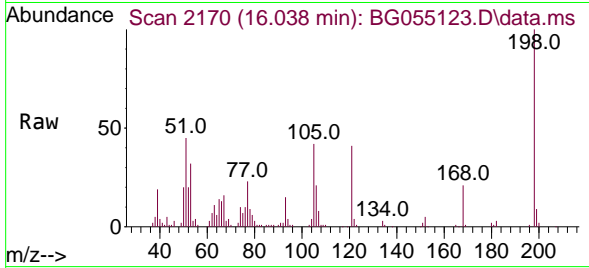




#65
 4,6-Dinitro-2-methylphenol
 Concen: 64.317 ng
 RT: 16.038 min Scan# 2170
 Delta R.T. -0.003 min
 Lab File: BG055123.D
 Acq: 11 Oct 2022 11:33

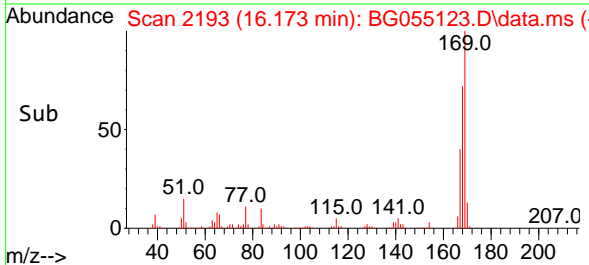
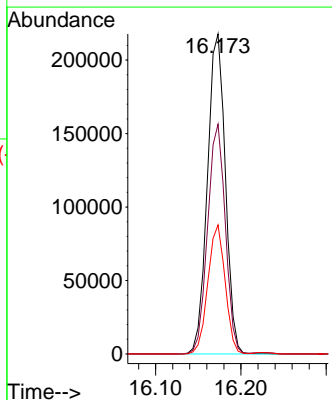
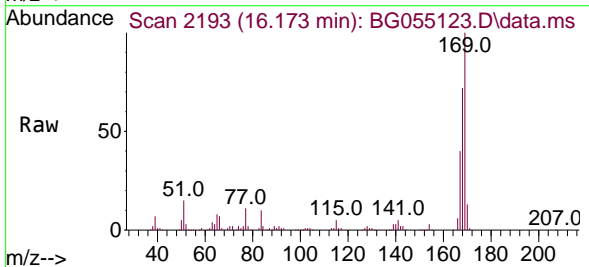
Instrument :
 BNA_G
 ClientSampleId :
 PB148225BS

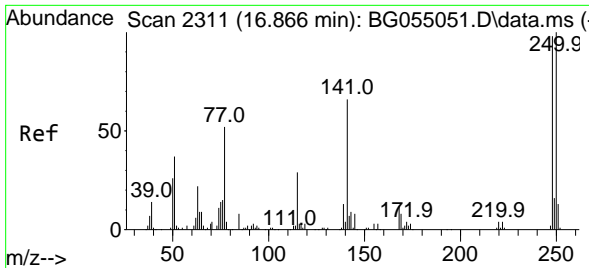
Tgt Ion:198 Resp: 68265
 Ion Ratio Lower Upper
 198 100
 51 44.7 19.4 59.4
 105 41.6 16.2 56.2



#66
 n-Nitrosodiphenylamine
 Concen: 42.987 ng
 RT: 16.173 min Scan# 2193
 Delta R.T. -0.002 min
 Lab File: BG055123.D
 Acq: 11 Oct 2022 11:33

Tgt Ion:169 Resp: 318782
 Ion Ratio Lower Upper
 169 100
 168 71.8 58.4 87.6
 167 40.3 33.7 50.5

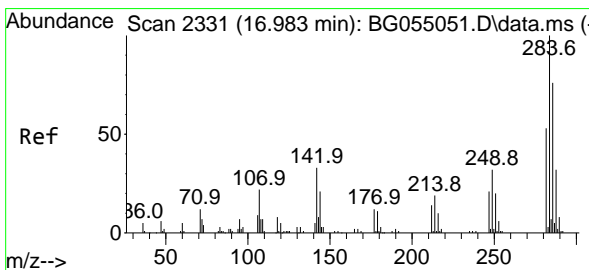
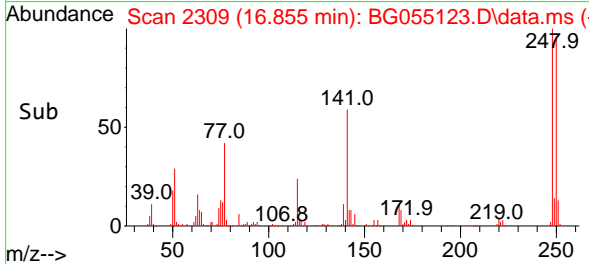
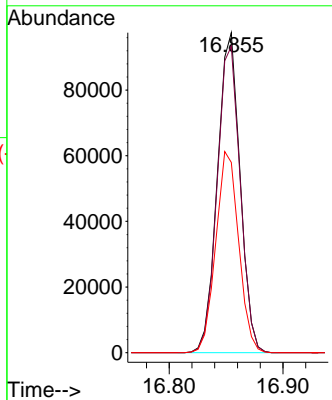
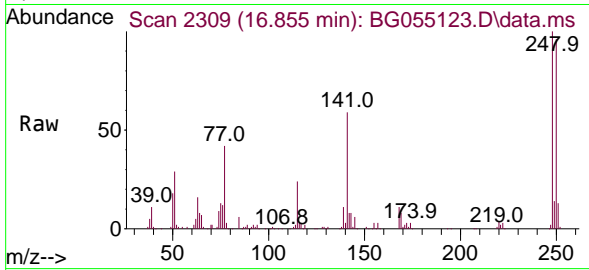




#67
 4-Bromophenyl-phenylether
 Concen: 44.866 ng
 RT: 16.855 min Scan# 21
 Delta R.T. -0.003 min
 Lab File: BG055123.D
 Acq: 11 Oct 2022 11:33

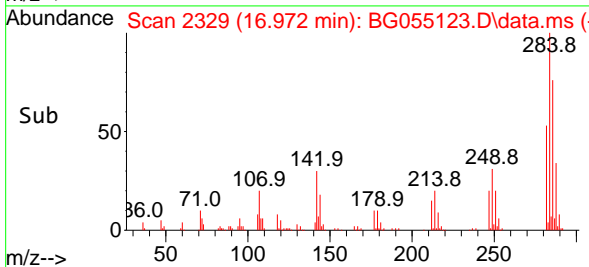
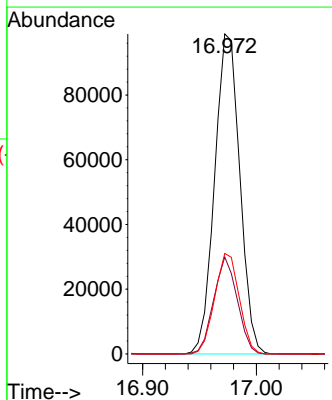
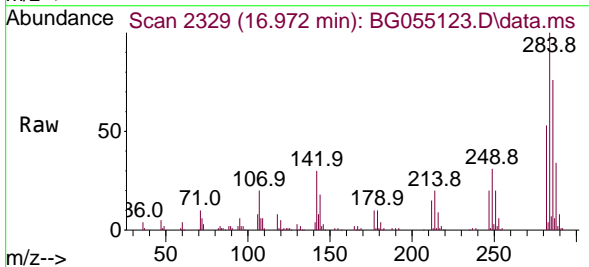
Instrument :
 BNA_G
 ClientSampleId :
 PB148225BS

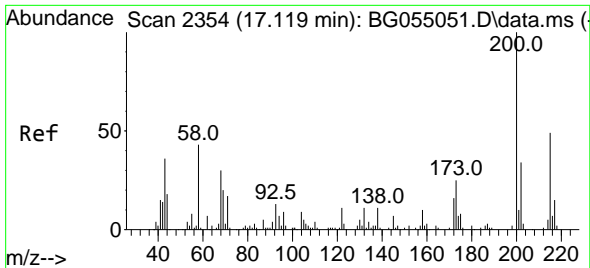
Tgt Ion:248 Resp: 135113
 Ion Ratio Lower Upper
 248 100
 250 95.8 81.7 122.5
 141 59.4 53.7 80.5



#68
 Hexachlorobenzene
 Concen: 43.693 ng
 RT: 16.972 min Scan# 2329
 Delta R.T. -0.008 min
 Lab File: BG055123.D
 Acq: 11 Oct 2022 11:33

Tgt Ion:284 Resp: 152129
 Ion Ratio Lower Upper
 284 100
 142 30.3 26.2 39.2
 249 31.4 25.2 37.8

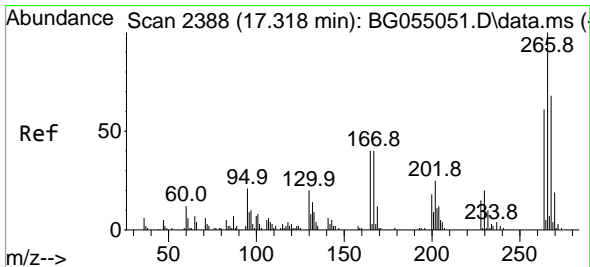
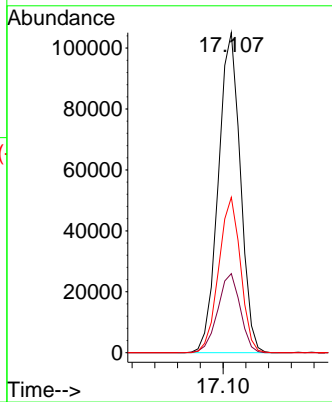
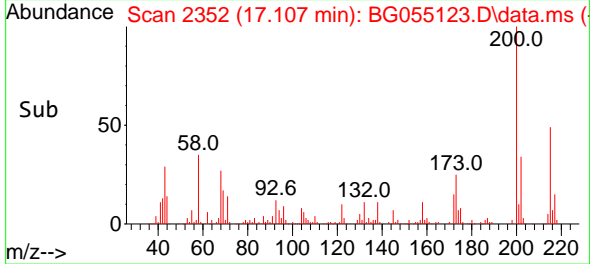
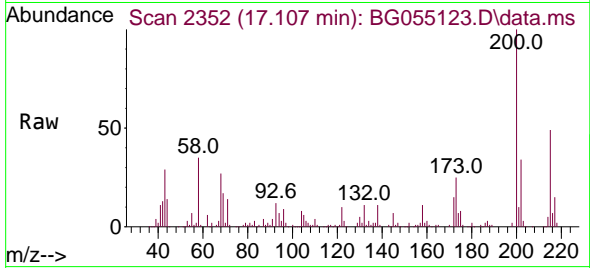




#69
 Atrazine
 Concen: 58.638 ng
 RT: 17.107 min Scan# 21
 Delta R.T. -0.002 min
 Lab File: BG055123.D
 Acq: 11 Oct 2022 11:33

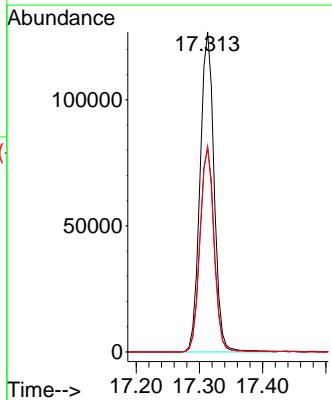
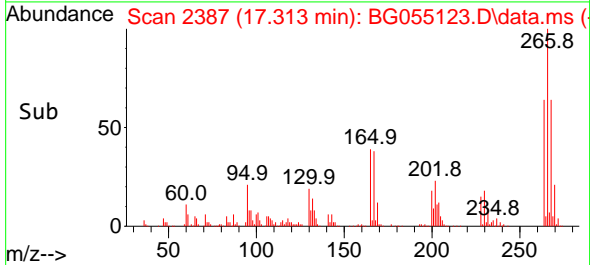
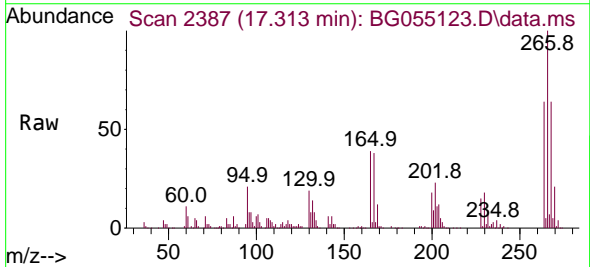
Instrument : BNA_G
 ClientSampleId : PB148225BS

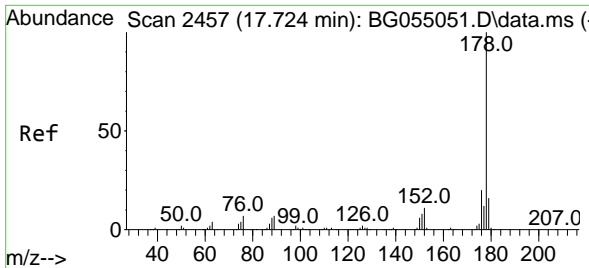
Tgt Ion	Resp	Lower	Upper
200	141675		
173	24.7	5.3	45.3
215	48.6	29.1	69.1



#70
 Pentachlorophenol
 Concen: 98.031 ng
 RT: 17.313 min Scan# 2387
 Delta R.T. -0.003 min
 Lab File: BG055123.D
 Acq: 11 Oct 2022 11:33

Tgt Ion	Resp	Lower	Upper
266	195687		
268	63.9	54.0	81.0
264	64.4	48.6	73.0



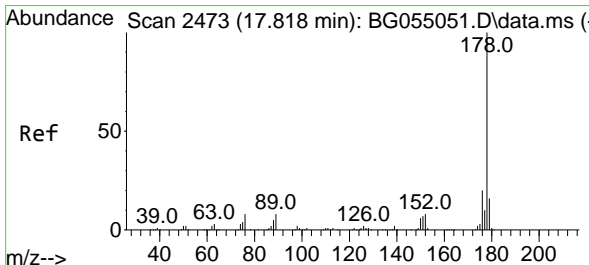
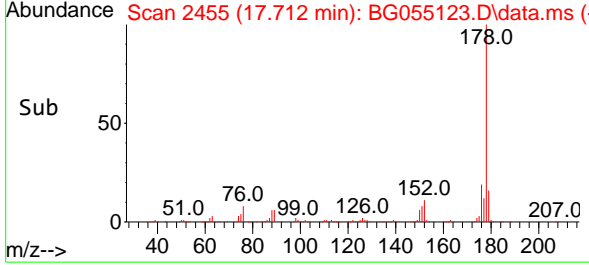
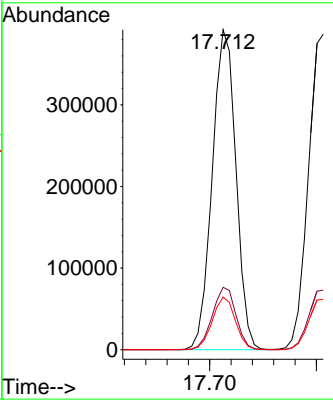
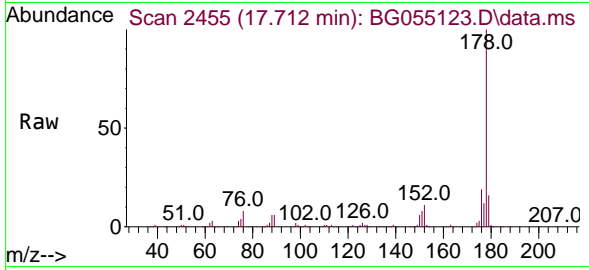


#71
 Phenanthrene
 Concen: 40.416 ng
 RT: 17.712 min Scan# 2455
 Delta R.T. -0.008 min
 Lab File: BG055123.D
 Acq: 11 Oct 2022 11:33

Instrument : BNA_G
 ClientSampleId : PB148225BS

Tgt Ion:178 Resp: 604526

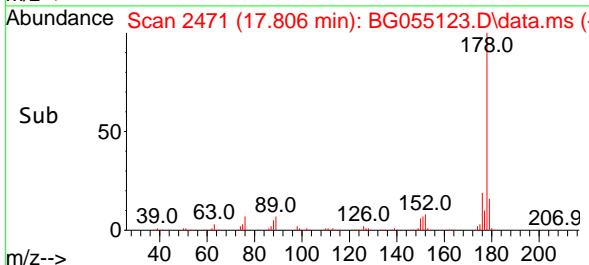
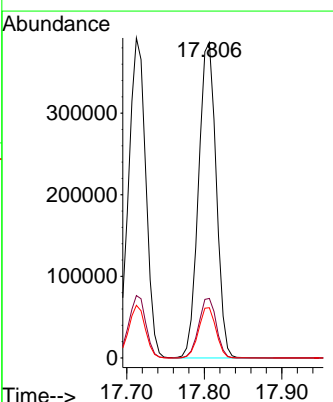
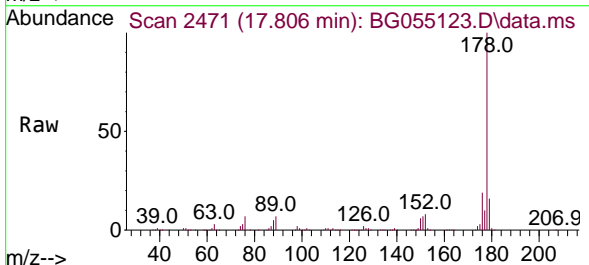
Ion	Ratio	Lower	Upper
178	100		
176	19.5	15.8	23.6
179	16.5	13.2	19.8

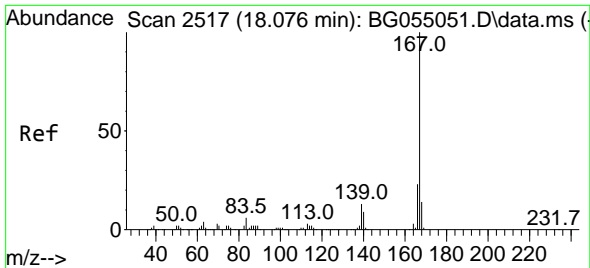


#72
 Anthracene
 Concen: 42.090 ng
 RT: 17.806 min Scan# 2471
 Delta R.T. -0.003 min
 Lab File: BG055123.D
 Acq: 11 Oct 2022 11:33

Tgt Ion:178 Resp: 612316

Ion	Ratio	Lower	Upper
178	100		
176	18.9	15.7	23.5
179	15.9	12.5	18.7

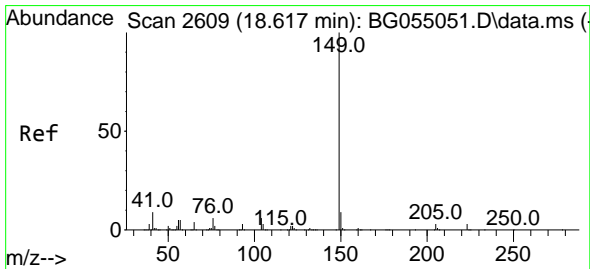
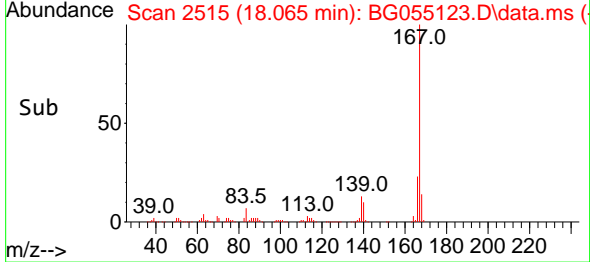
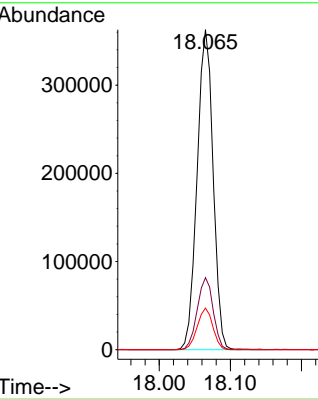
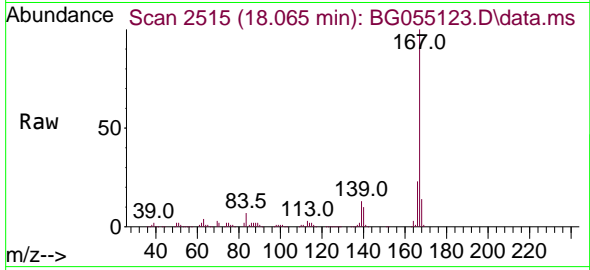




#73
 Carbazole
 Concen: 44.433 ng
 RT: 18.065 min Scan# 21
 Delta R.T. -0.002 min
 Lab File: BG055123.D
 Acq: 11 Oct 2022 11:33

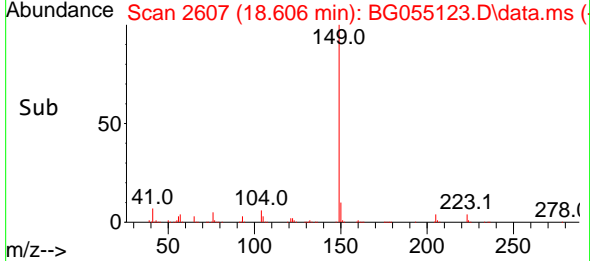
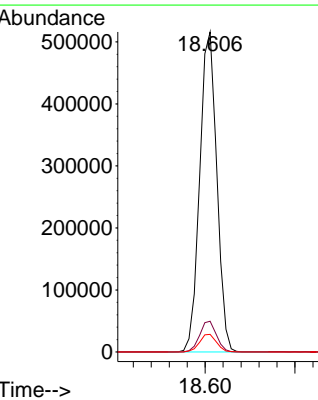
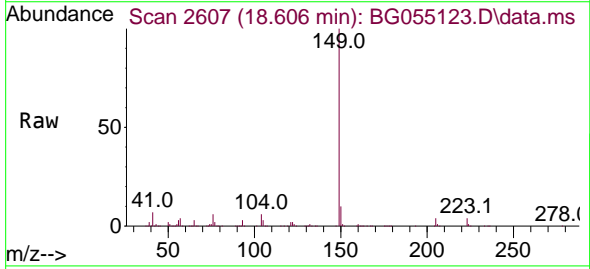
Instrument :
 BNA_G
 ClientSampleId :
 PB148225BS

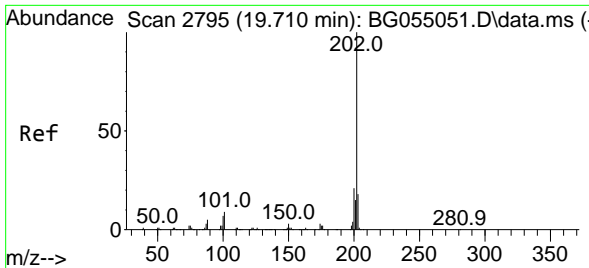
Tgt Ion:167 Resp: 567373
 Ion Ratio Lower Upper
 167 100
 166 22.5 18.2 27.2
 139 13.0 10.2 15.4



#74
 Di-n-butylphthalate
 Concen: 51.072 ng
 RT: 18.606 min Scan# 2607
 Delta R.T. -0.003 min
 Lab File: BG055123.D
 Acq: 11 Oct 2022 11:33

Tgt Ion:149 Resp: 680773
 Ion Ratio Lower Upper
 149 100
 150 9.6 7.5 11.3
 104 5.5 4.8 7.2



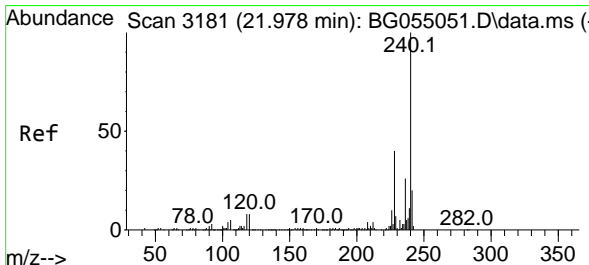
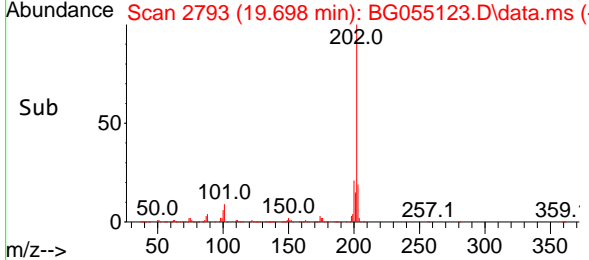
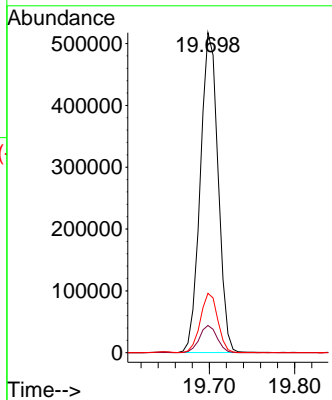
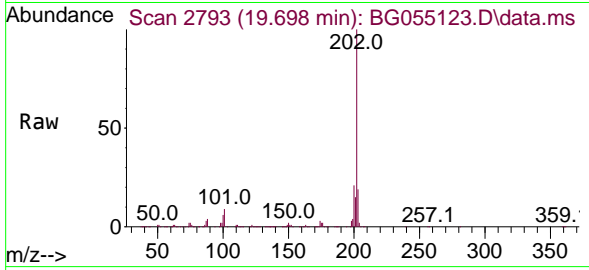


#75
 Fluoranthene
 Concen: 40.051 ng
 RT: 19.698 min Scan# 21
 Delta R.T. -0.008 min
 Lab File: BG055123.D
 Acq: 11 Oct 2022 11:33

Instrument : BNA_G
 ClientSampleId : PB148225BS

Tgt Ion: 202 Resp: 747368

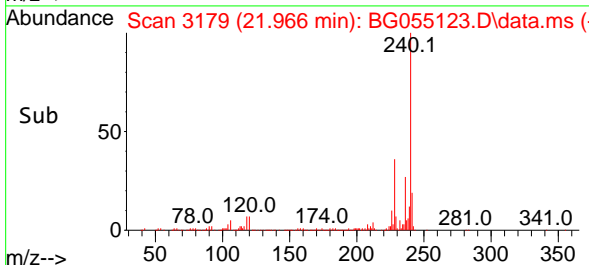
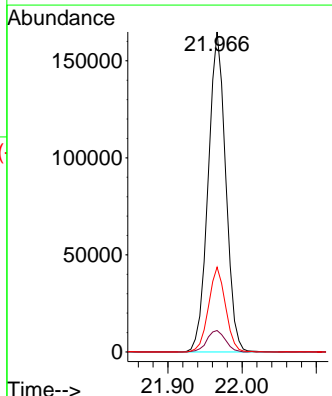
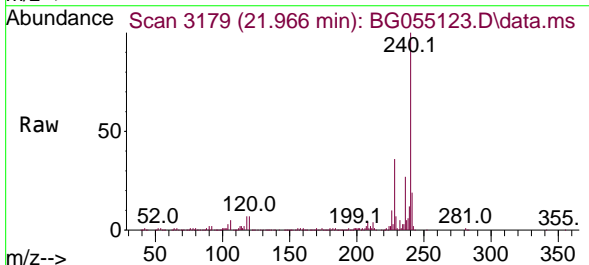
Ion	Ratio	Lower	Upper
202	100		
101	8.5	0.0	28.9
203	18.6	0.0	37.7

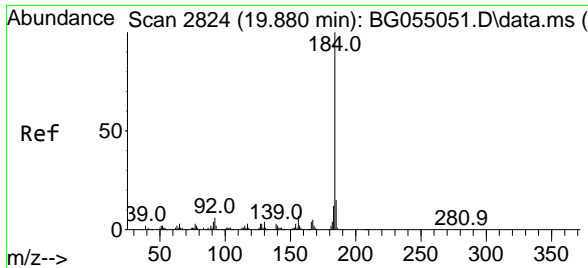


#76
 Chrysene-d12
 Concen: 20.000 ng
 RT: 21.966 min Scan# 3179
 Delta R.T. -0.003 min
 Lab File: BG055123.D
 Acq: 11 Oct 2022 11:33

Tgt Ion: 240 Resp: 270569

Ion	Ratio	Lower	Upper
240	100		
120	6.7	6.2	9.4
236	26.5	20.6	30.8



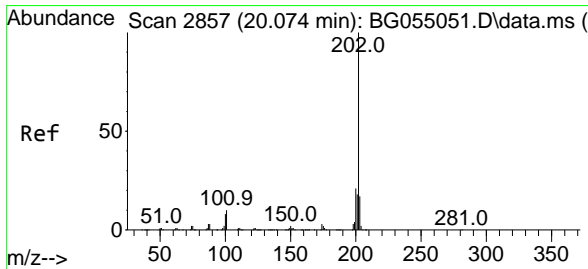
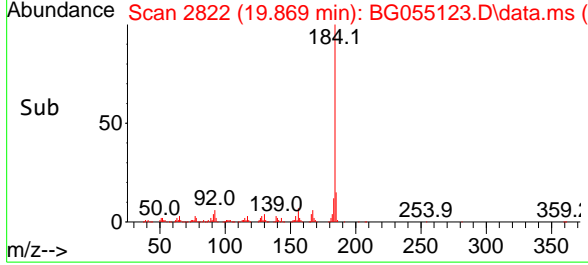
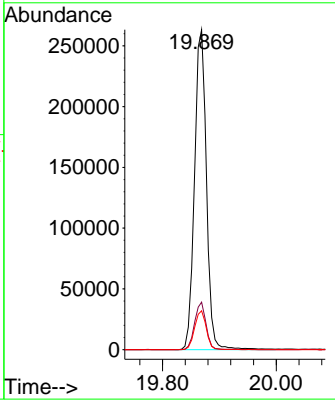
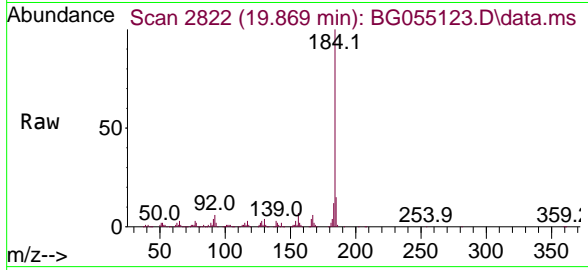


#77
 Benzidine
 Concen: 82.381 ng
 RT: 19.869 min Scan# 2822
 Delta R.T. -0.003 min
 Lab File: BG055123.D
 Acq: 11 Oct 2022 11:33

Instrument : BNA_G
 Client Sample Id : PB148225BS

Tgt Ion:184 Resp: 383989

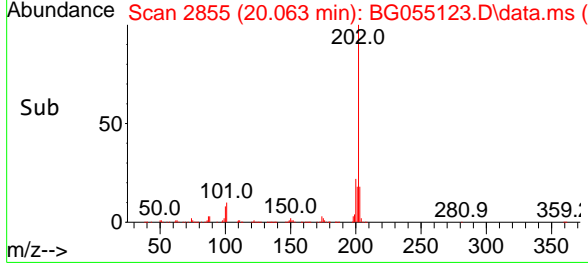
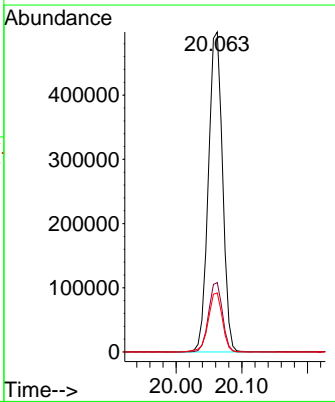
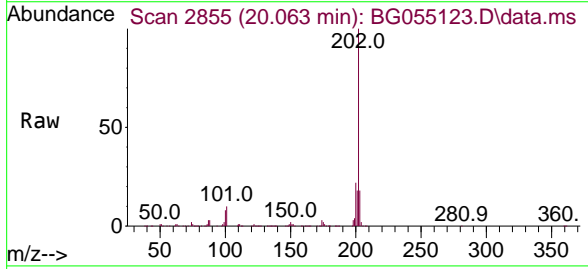
Ion	Ratio	Lower	Upper
184	100		
185	14.9	12.2	18.4
183	12.2	9.4	14.0

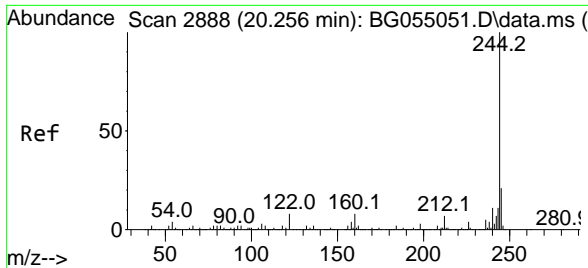


#78
 Pyrene
 Concen: 41.443 ng
 RT: 20.063 min Scan# 2855
 Delta R.T. -0.002 min
 Lab File: BG055123.D
 Acq: 11 Oct 2022 11:33

Tgt Ion:202 Resp: 745618

Ion	Ratio	Lower	Upper
202	100		
200	21.7	16.6	25.0
203	18.4	14.0	21.0



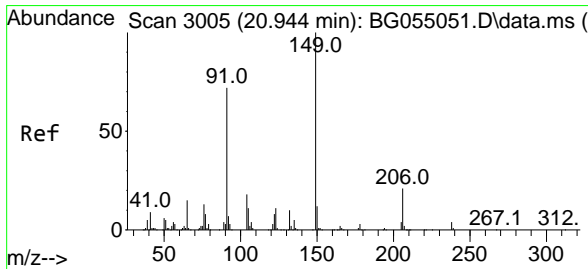
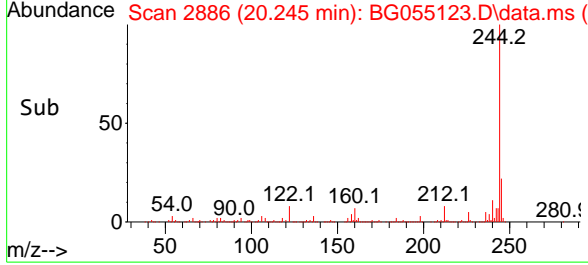
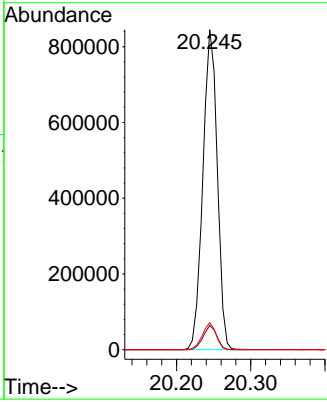
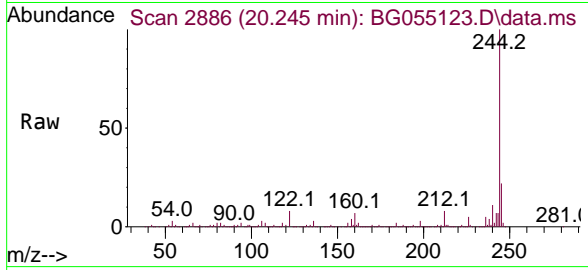


#79
 Terphenyl-d14
 Concen: 84.994 ng
 RT: 20.245 min Scan# 21
 Delta R.T. -0.008 min
 Lab File: BG055123.D
 Acq: 11 Oct 2022 11:33

Instrument : BNA_G
 ClientSampleId : PB148225BS

Tgt Ion:244 Resp: 1137788

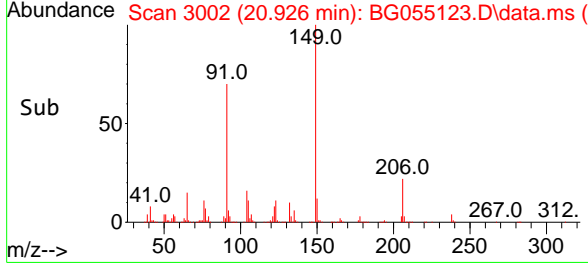
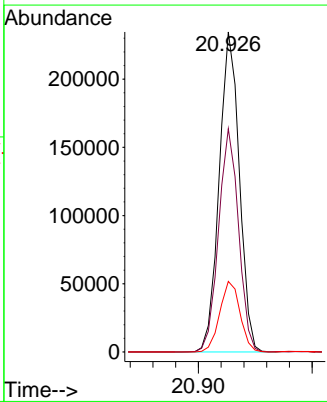
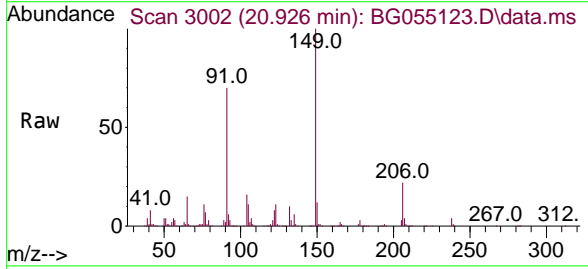
Ion	Ratio	Lower	Upper
244	100		
212	7.6	6.0	9.0
122	8.4	6.6	10.0

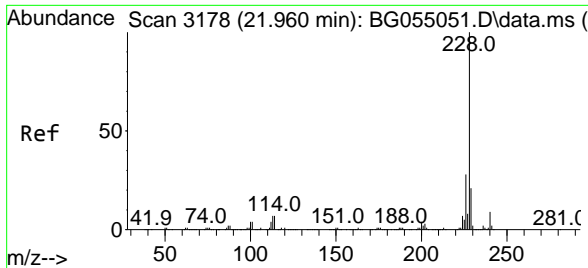


#80
 Butylbenzylphthalate
 Concen: 50.934 ng
 RT: 20.926 min Scan# 3002
 Delta R.T. -0.008 min
 Lab File: BG055123.D
 Acq: 11 Oct 2022 11:33

Tgt Ion:149 Resp: 288773

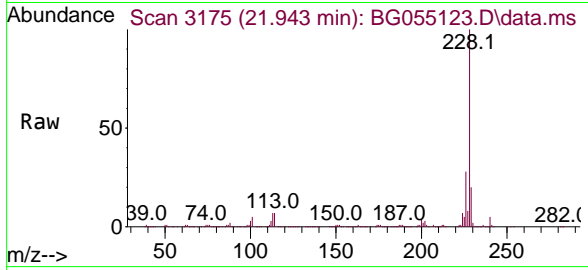
Ion	Ratio	Lower	Upper
149	100		
91	69.7	57.8	86.8
206	22.1	16.9	25.3





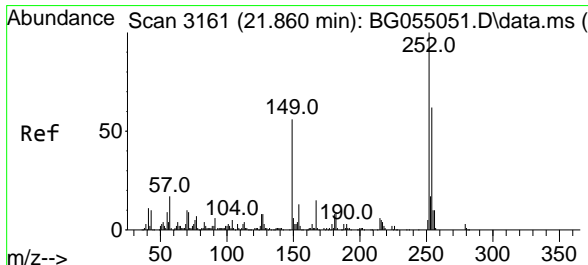
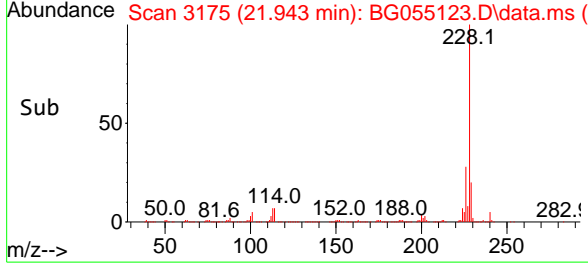
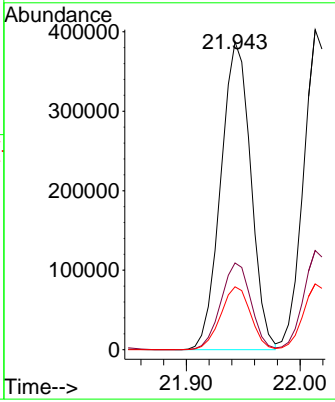
#81
 Benzo(a)anthracene
 Concen: 41.327 ng
 RT: 21.943 min Scan# 3158
 Delta R.T. -0.008 min
 Lab File: BG055123.D
 Acq: 11 Oct 2022 11:33

Instrument : BNA_G
 ClientSampleId : PB148225BS



Tgt Ion:228 Resp: 710328

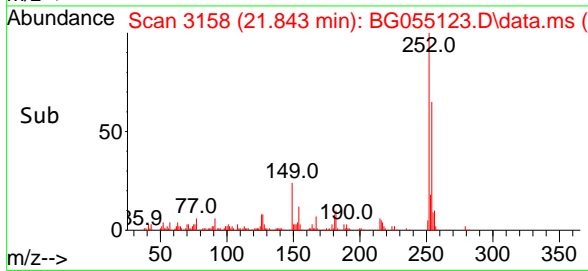
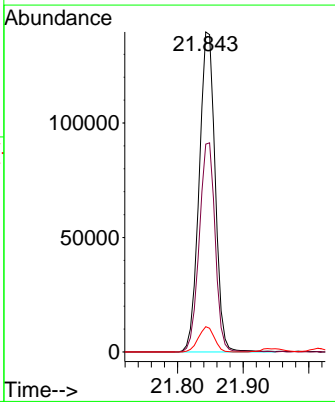
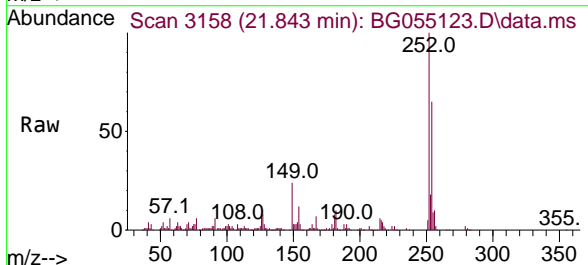
Ion	Ratio	Lower	Upper
228	100		
226	28.2	22.4	33.6
229	20.4	16.7	25.1

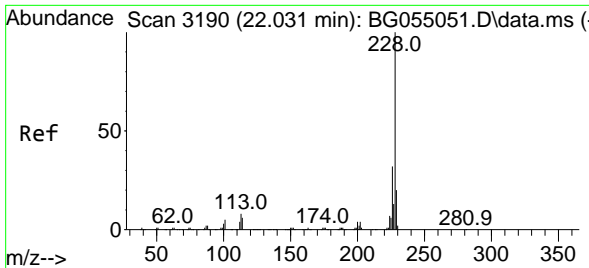


#82
 3,3'-Dichlorobenzidine
 Concen: 47.488 ng
 RT: 21.843 min Scan# 3158
 Delta R.T. -0.008 min
 Lab File: BG055123.D
 Acq: 11 Oct 2022 11:33

Tgt Ion:252 Resp: 237280

Ion	Ratio	Lower	Upper
252	100		
254	64.9	49.8	74.8
126	7.9	6.3	9.5

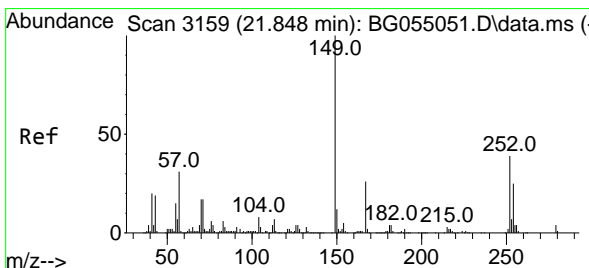
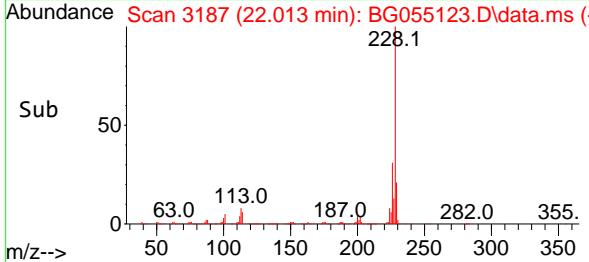
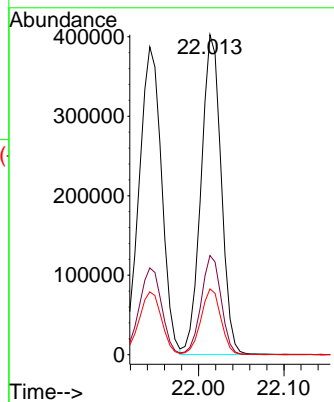
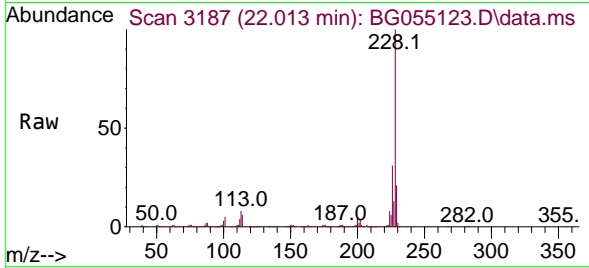




#83
 Chrysene
 Concen: 39.681 ng
 RT: 22.013 min Scan# 31
 Delta R.T. -0.008 min
 Lab File: BG055123.D
 Acq: 11 Oct 2022 11:33

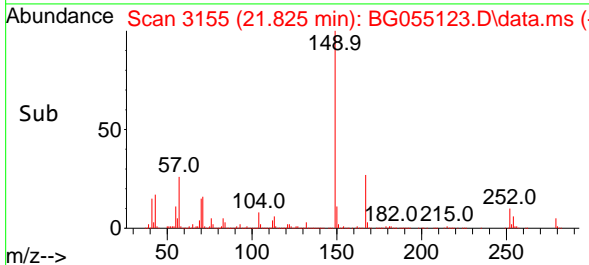
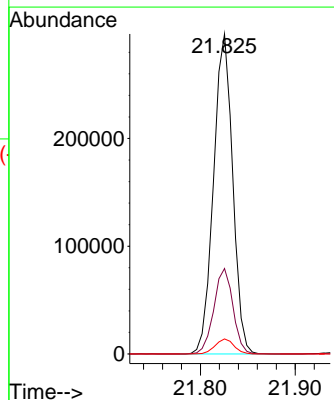
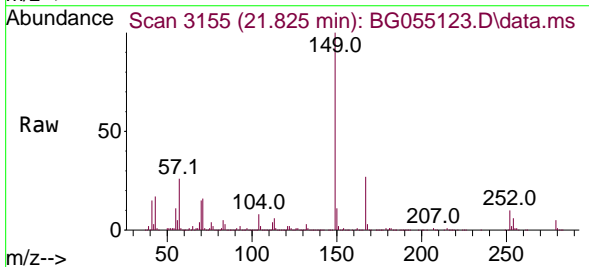
Instrument :
 BNA_G
 ClientSampleId :
 PB148225BS

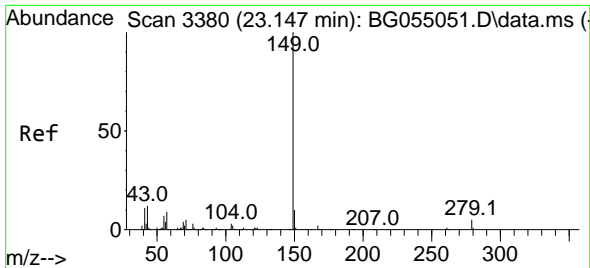
Tgt Ion:228 Resp: 657357
 Ion Ratio Lower Upper
 228 100
 226 31.0 25.3 37.9
 229 20.6 16.1 24.1



#84
 Bis(2-ethylhexyl)phthalate
 Concen: 49.202 ng
 RT: 21.825 min Scan# 3155
 Delta R.T. -0.008 min
 Lab File: BG055123.D
 Acq: 11 Oct 2022 11:33

Tgt Ion:149 Resp: 415368
 Ion Ratio Lower Upper
 149 100
 167 26.7 21.0 31.4
 279 4.7 3.4 5.2



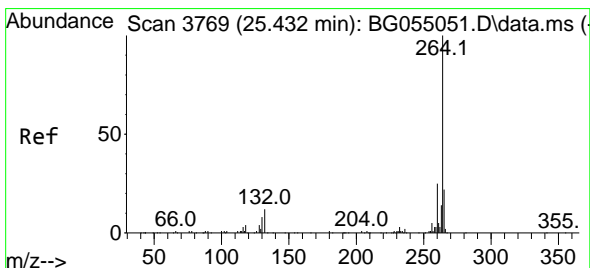
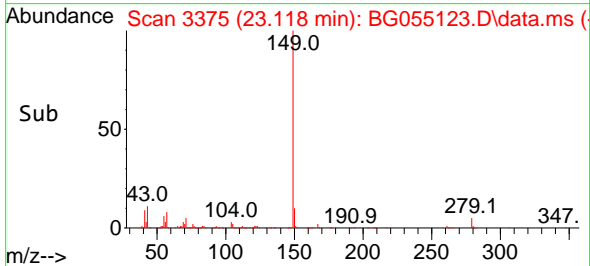
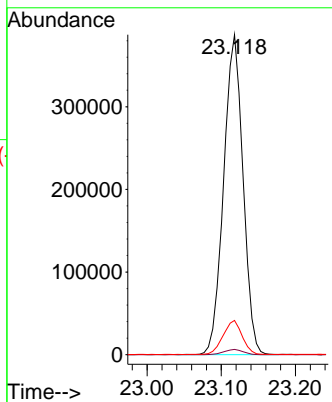
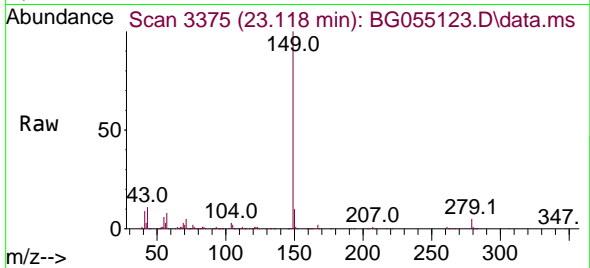


#85
 Di-n-octyl phthalate
 Concen: 49.494 ng
 RT: 23.118 min Scan# 31
 Delta R.T. -0.008 min
 Lab File: BG055123.D
 Acq: 11 Oct 2022 11:33

Instrument :
 BNA_G
 ClientSampleId :
 PB148225BS

Tgt Ion:149 Resp: 701835

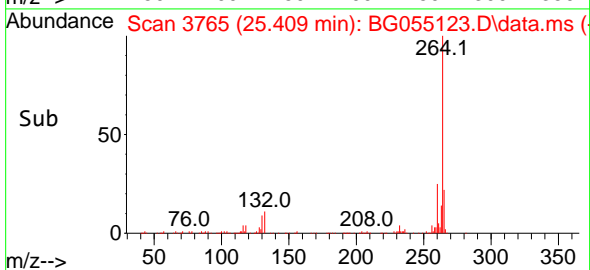
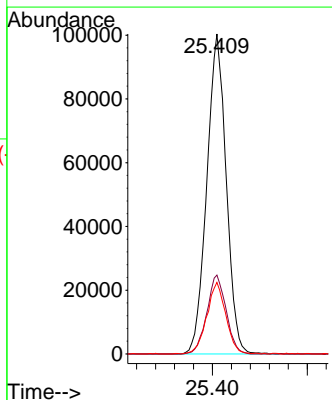
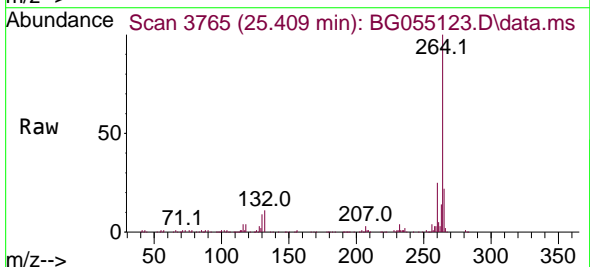
Ion	Ratio	Lower	Upper
149	100		
167	1.6	1.3	1.9
43	10.5	10.2	15.4

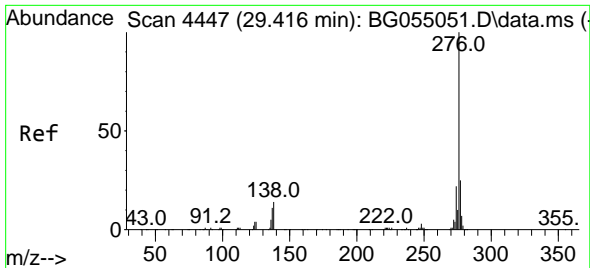


#86
 Perylene-d12
 Concen: 20.000 ng
 RT: 25.409 min Scan# 3765
 Delta R.T. -0.008 min
 Lab File: BG055123.D
 Acq: 11 Oct 2022 11:33

Tgt Ion:264 Resp: 284912

Ion	Ratio	Lower	Upper
264	100		
260	24.7	19.7	29.5
265	22.3	17.8	26.6

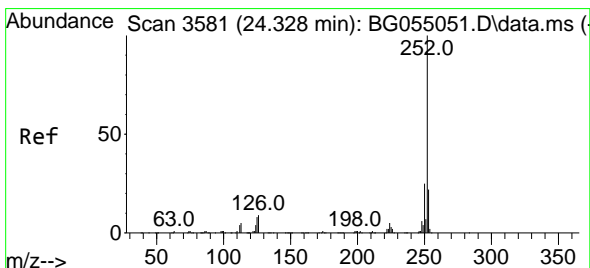
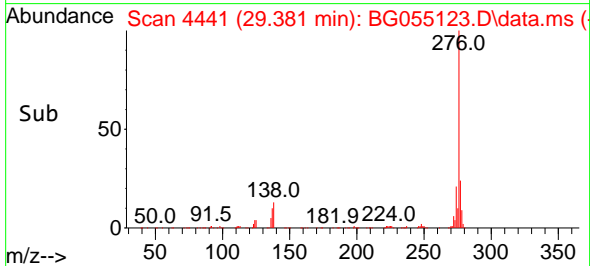
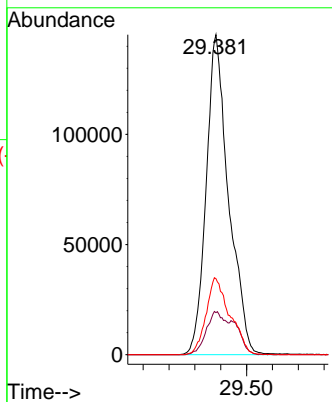
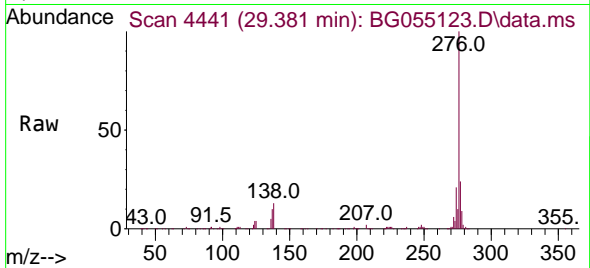




#87
 Indeno(1,2,3-cd)pyrene
 Concen: 42.641 ng
 RT: 29.381 min Scan# 4441
 Delta R.T. -0.008 min
 Lab File: BG055123.D
 Acq: 11 Oct 2022 11:33

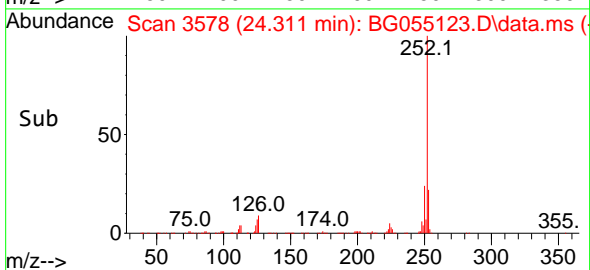
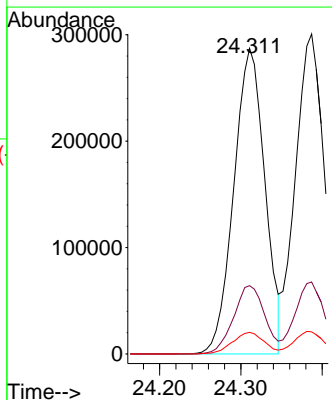
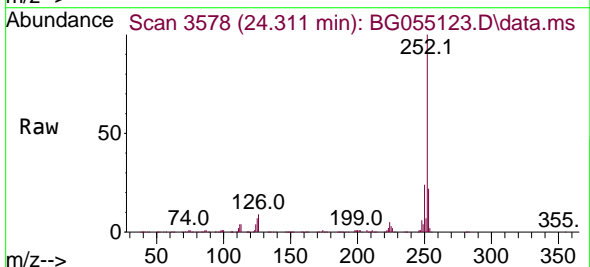
Instrument :
 BNA_G
 ClientSampleId :
 PB148225BS

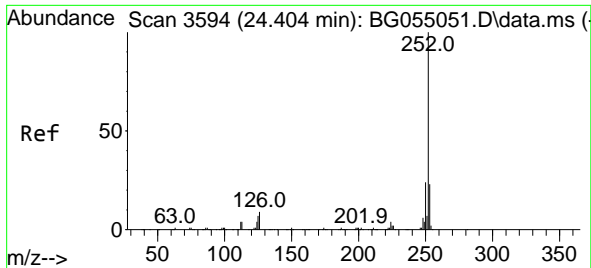
Tgt Ion:276 Resp: 876729
 Ion Ratio Lower Upper
 276 100
 138 11.5 10.0 15.0
 277 25.6 20.0 30.0



#88
 Benzo(b)fluoranthene
 Concen: 45.361 ng
 RT: 24.311 min Scan# 3578
 Delta R.T. -0.008 min
 Lab File: BG055123.D
 Acq: 11 Oct 2022 11:33

Tgt Ion:252 Resp: 761492
 Ion Ratio Lower Upper
 252 100
 253 22.4 17.9 26.9
 125 7.0 6.1 9.1

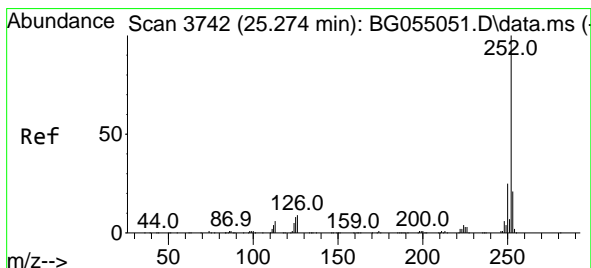
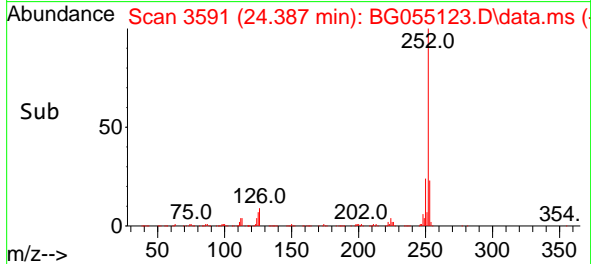
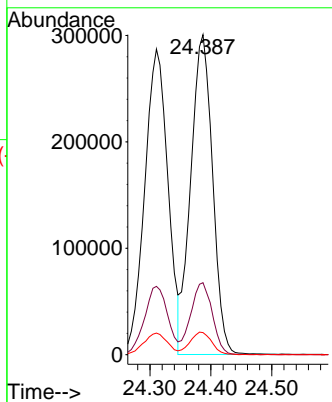
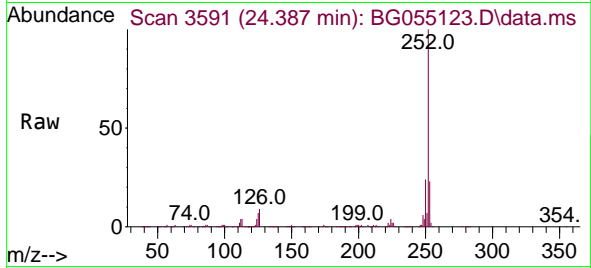




#89
 Benzo(k)fluoranthene
 Concen: 44.071 ng
 RT: 24.387 min Scan# 31
 Delta R.T. -0.003 min
 Lab File: BG055123.D
 Acq: 11 Oct 2022 11:33

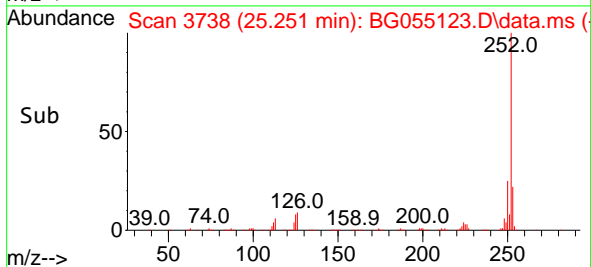
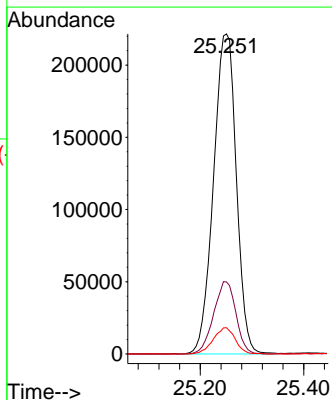
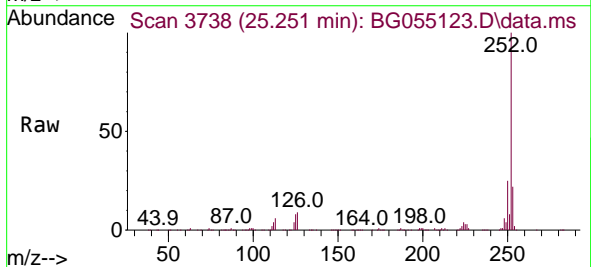
Instrument :
 BNA_G
 ClientSampleId :
 PB148225BS

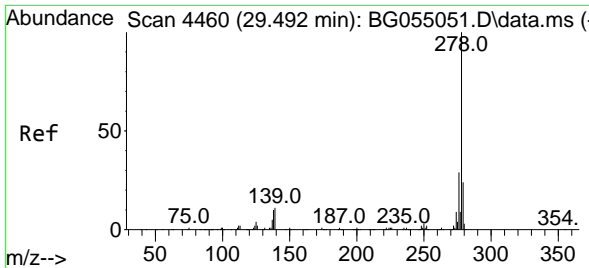
Tgt Ion:252 Resp: 745329
 Ion Ratio Lower Upper
 252 100
 253 22.5 17.9 26.9
 125 6.9 5.8 8.6



#90
 Benzo(a)pyrene
 Concen: 47.176 ng
 RT: 25.251 min Scan# 3738
 Delta R.T. -0.002 min
 Lab File: BG055123.D
 Acq: 11 Oct 2022 11:33

Tgt Ion:252 Resp: 678762
 Ion Ratio Lower Upper
 252 100
 253 22.5 16.9 25.3
 125 8.2 6.6 9.8





#91
 Dibenzo(a,h)anthracene
 Concen: 45.749 ng
 RT: 29.458 min Scan# 4454
 Delta R.T. -0.008 min
 Lab File: BG055123.D
 Acq: 11 Oct 2022 11:33

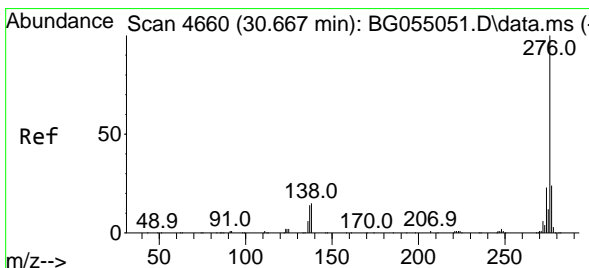
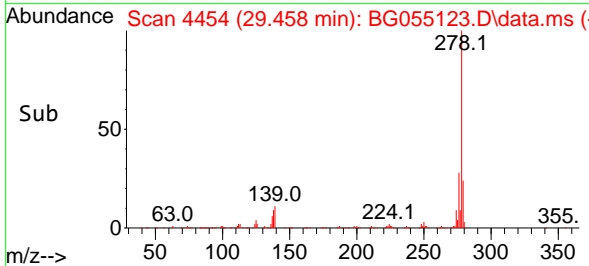
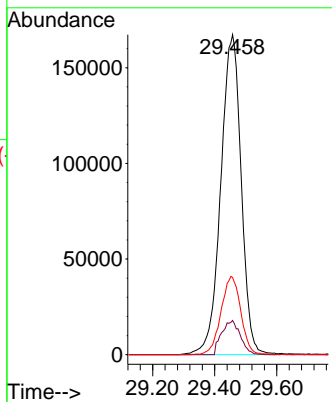
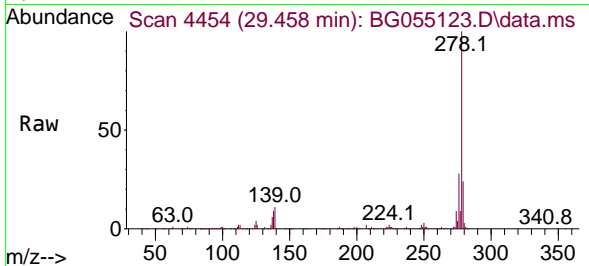
Instrument :

BNA_G

ClientSampleId :

PB148225BS

Tgt Ion:278 Resp: 764123
 Ion Ratio Lower Upper
 278 100
 139 10.7 8.5 12.7
 279 24.1 19.0 28.6



#92
 Benzo(g,h,i)perylene
 Concen: 44.742 ng
 RT: 30.638 min Scan# 4655
 Delta R.T. 0.009 min
 Lab File: BG055123.D
 Acq: 11 Oct 2022 11:33

Tgt Ion:276 Resp: 750165
 Ion Ratio Lower Upper
 276 100
 277 23.5 18.8 28.2
 138 13.7 11.8 17.6

