

Data Path : Z:\HPCHEM1\BNA G\DATA\BG101215\
 Data File : BG019152.D
 Acq On : 12 Oct 2015 8:36
 Operator : UM/NP
 Sample : G3978-05
 Misc :
 ALS Vial : 43 Sample Multiplier: 1

Instrument :
 BNA_G
 ClientSampleId :
 MW3

Quant Time: Oct 12 09:30:32 2015
 Quant Method : Z:\HPCHEM1\BNA G\METHODS\8270-BG101015.M
 Quant Title : ASP BNA STANDARDS FOR 5 POINT CALIBRATION
 QLast Update : Sat Oct 10 07:04:31 2015
 Response via : Initial Calibration

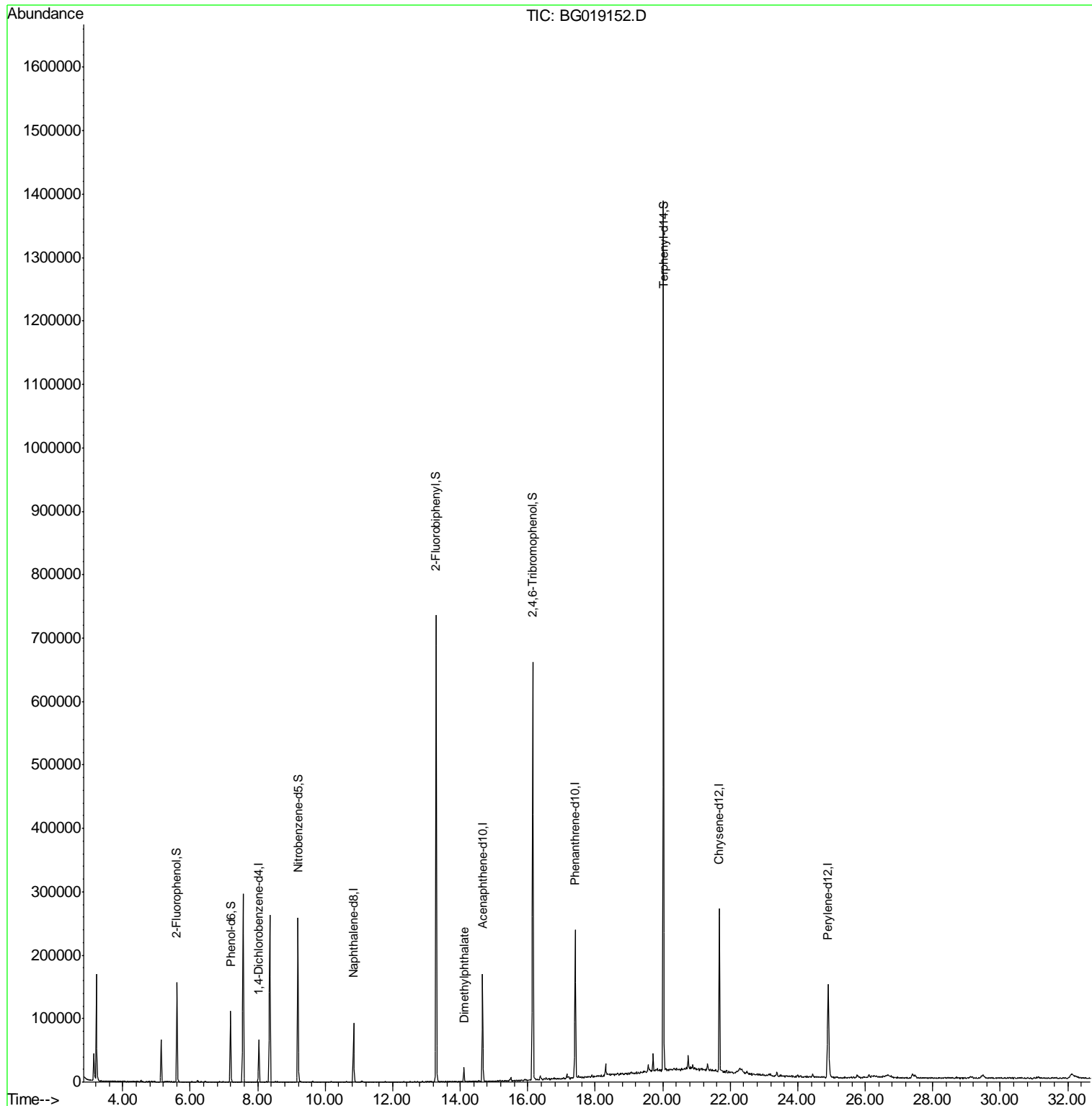
Internal Standards	R.T.	QIon	Response	Conc	Units	Dev(Min)
1) 1,4-Dichlorobenzene-d4	8.03	152	16924	20.00	ng	0.00
21) Naphthalene-d8	10.83	136	76397	20.00	ng	0.00
38) Acenaphthene-d10	14.66	164	55572	20.00	ng	0.00
63) Phenanthrene-d10	17.40	188	138329	20.00	ng	0.00
75) Chrysene-d12	21.67	240	154886	20.00	ng	-0.01
86) Perylene-d12	24.90	264	156557	20.00	ng	-0.01
System Monitoring Compounds						
5) 2-Fluorophenol	5.60	112	56440	67.90	ng	0.00
7) Phenol-d6	7.19	99	56165	43.98	ng	0.00
23) Nitrobenzene-d5	9.19	82	147921	106.98	ng	0.00
41) 2,4,6-Tribromophenol	16.15	330	118740	156.80	ng	0.00
44) 2-Fluorobiphenyl	13.28	172	377979	104.58	ng	0.00
78) Terphenyl-d14	20.02	244	590850	100.77	ng	0.00
Target Compounds						Qvalue
49) Dimethylphthalate	14.11	163	13551	3.09	ng	98

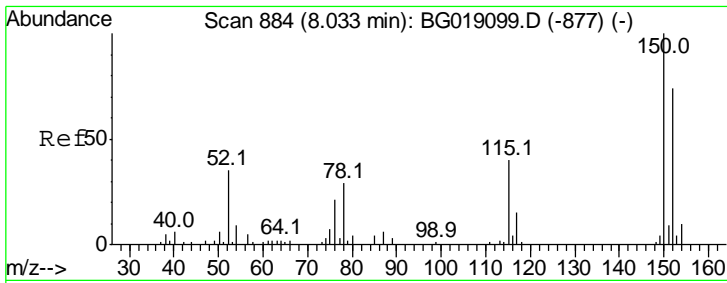
(#) = qualifier out of range (m) = manual integration (+) = signals summed

Data Path : Z:\HPCHEM1\BNA G\DATA\BG101215\
 Data File : BG019152.D
 Acq On : 12 Oct 2015 8:36
 Operator : UM/NP
 Sample : G3978-05
 Misc :
 ALS Vial : 43 Sample Multiplier: 1

Instrument :
 BNA_G
 ClientSampleId :
 MW3

Quant Time: Oct 12 09:30:32 2015
 Quant Method : Z:\HPCHEM1\BNA G\METHODS\8270-BG101015.M
 Quant Title : ASP BNA STANDARDS FOR 5 POINT CALIBRATION
 QLast Update : Sat Oct 10 07:04:31 2015
 Response via : Initial Calibration

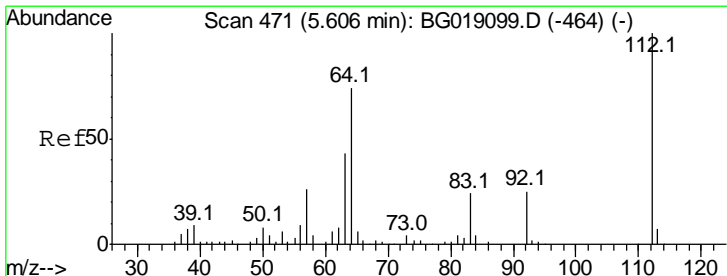
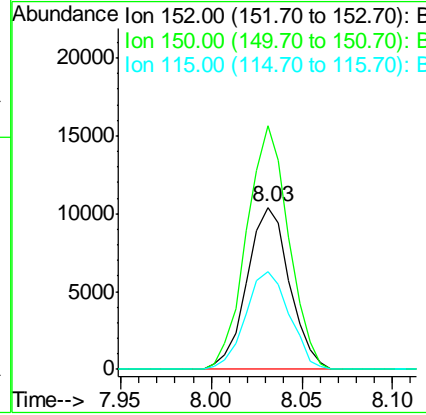
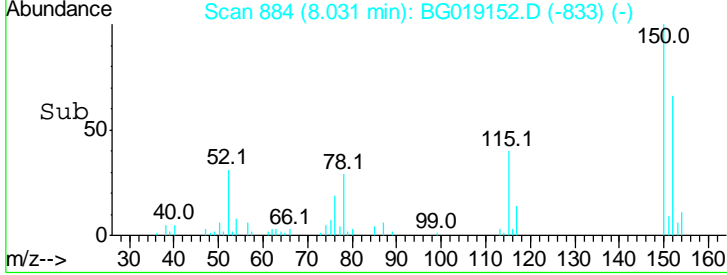
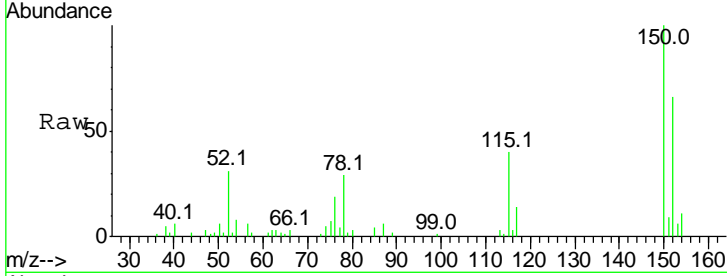




#1
 1,4-Dichlorobenzene-d4
 Concen: 20.00 ng
 RT: 8.03 min Scan# 884
 Delta R.T. -0.00 min
 Lab File: BG019152.D
 Acq: 12 Oct 2015 8:36

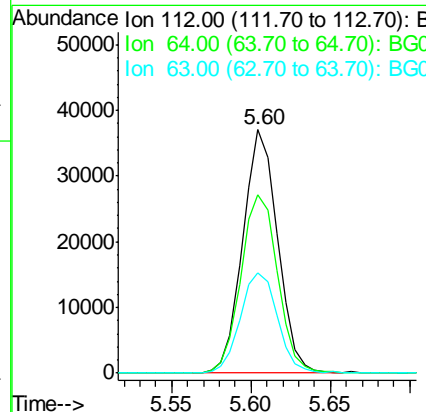
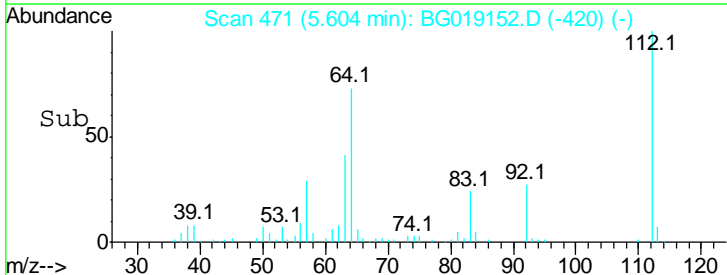
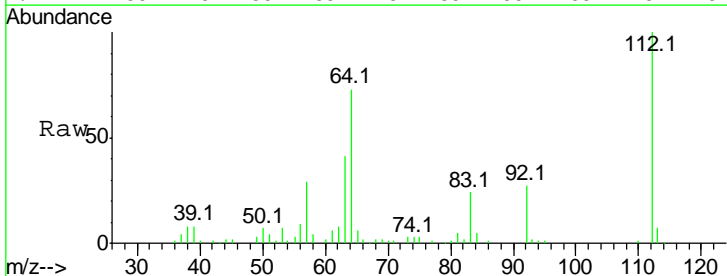
Instrument :
 BNA_G
 ClientSampled :
 MW3

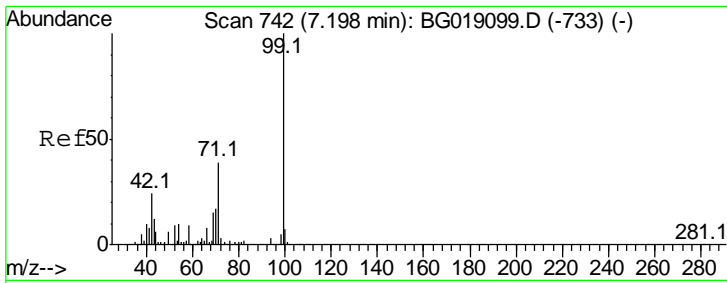
Tgt Ion	Resp	Lower	Upper
152	16924		
152	100		
150	150.4	108.2	162.2
115	60.7	43.2	64.8



#5
 2-Fluorophenol
 Concen: 67.90 ng
 RT: 5.60 min Scan# 471
 Delta R.T. -0.00 min
 Lab File: BG019152.D
 Acq: 12 Oct 2015 8:36

Tgt Ion	Resp	Lower	Upper
112	56440		
112	100		
64	73.2	59.0	88.4
63	41.0	34.7	52.1

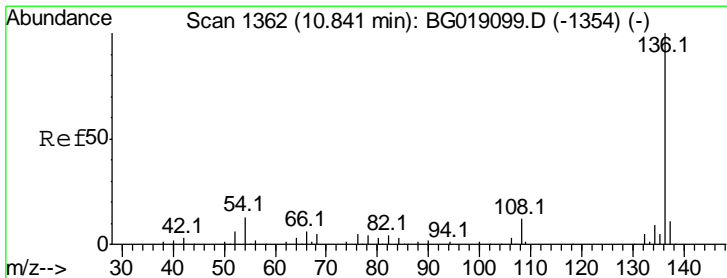
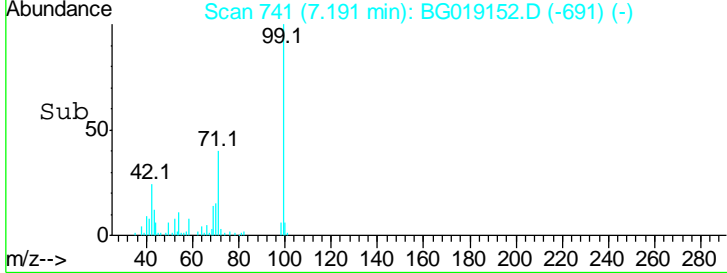
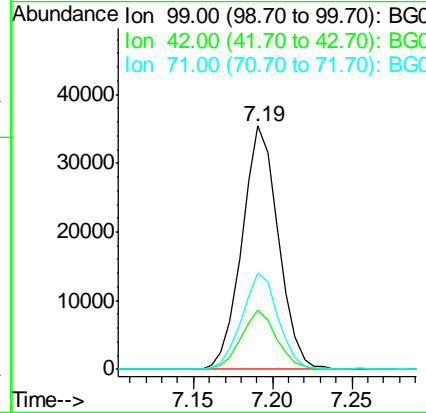
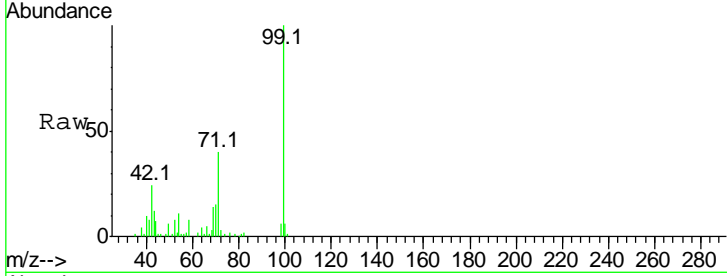




#7
 Phenol-d6
 Concen: 43.98 ng
 RT: 7.19 min Scan# 741
 Delta R.T. -0.01 min
 Lab File: BG019152.D
 Acq: 12 Oct 2015 8:36

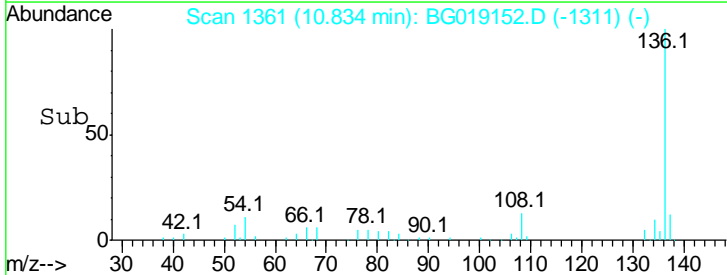
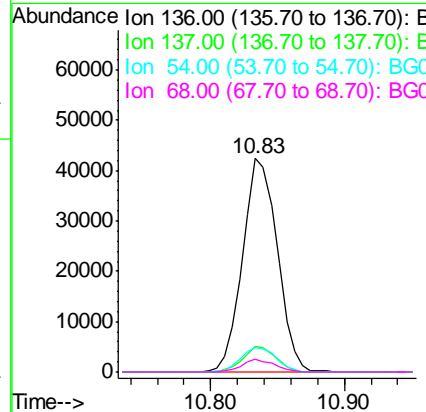
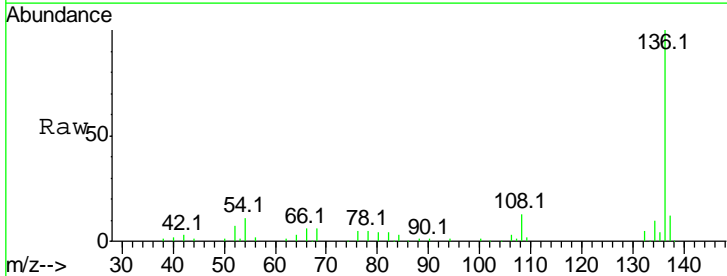
Instrument :
 BNA_G
 ClientSampled :
 MW3

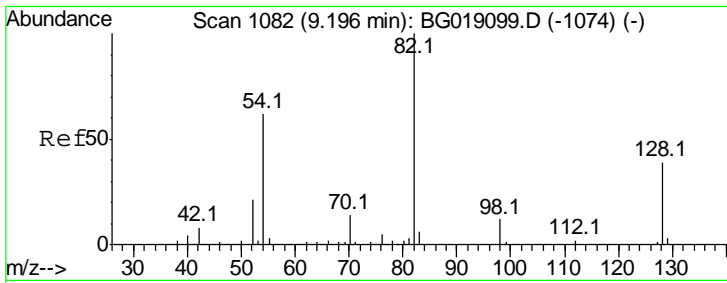
Tgt Ion	Resp	Lower	Upper
99	100		
42	24.3	19.5	29.3
71	39.6	31.4	47.0



#21
 Naphthalene-d8
 Concen: 20.00 ng
 RT: 10.83 min Scan# 1361
 Delta R.T. -0.01 min
 Lab File: BG019152.D
 Acq: 12 Oct 2015 8:36

Tgt Ion	Resp	Lower	Upper
136	100		
137	11.8	9.0	13.4
54	11.3	10.1	15.1
68	5.8	4.4	6.6

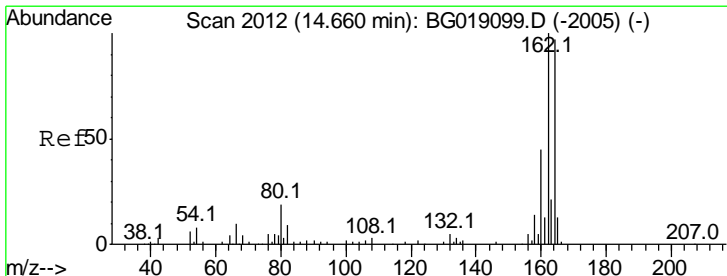
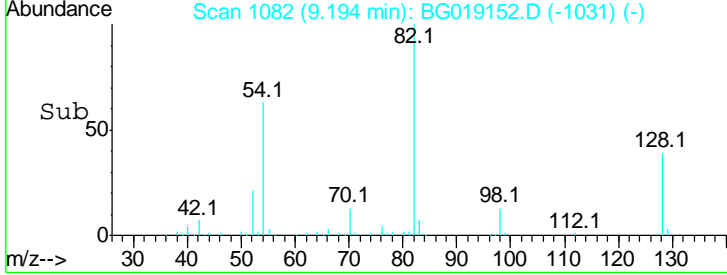
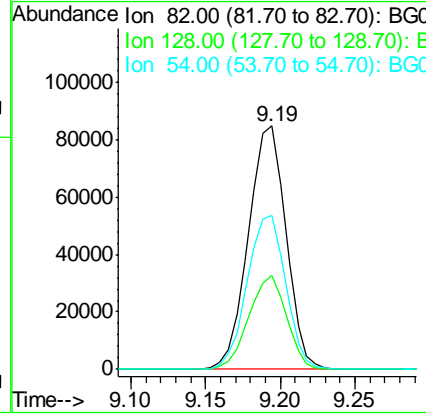
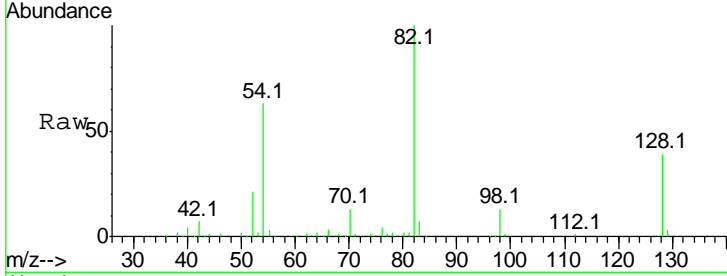




#23
 Nitrobenzene-d5
 Concen: 106.98 ng
 RT: 9.19 min Scan# 1082
 Delta R.T. -0.00 min
 Lab File: BG019152.D
 Acq: 12 Oct 2015 8:36

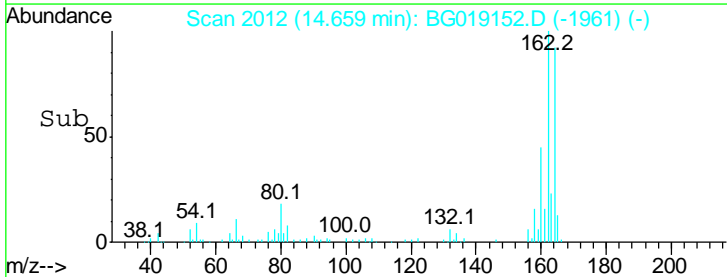
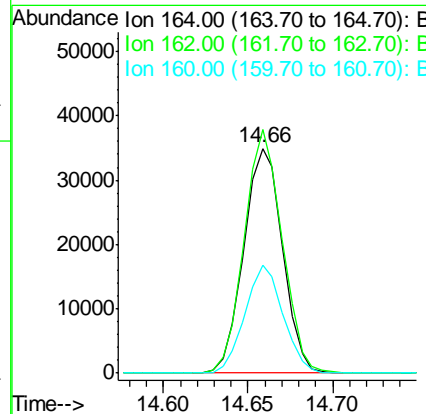
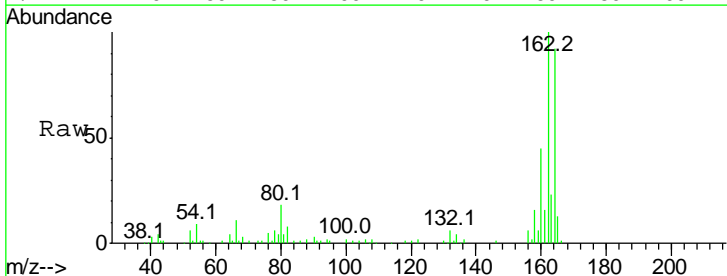
Instrument :
 BNA_G
 ClientSampled :
 MW3

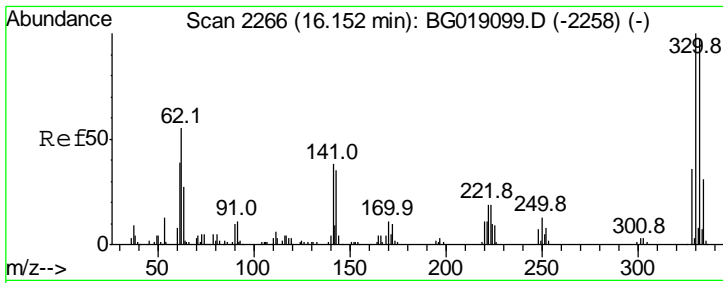
Tgt Ion	Resp	Lower	Upper
82	100		
128	38.5	31.4	47.2
54	63.4	50.0	75.0



#38
 Acenaphthene-d10
 Concen: 20.00 ng
 RT: 14.66 min Scan# 2012
 Delta R.T. -0.00 min
 Lab File: BG019152.D
 Acq: 12 Oct 2015 8:36

Tgt Ion	Resp	Lower	Upper
164	100		
162	108.5	82.6	124.0
160	48.3	36.9	55.3

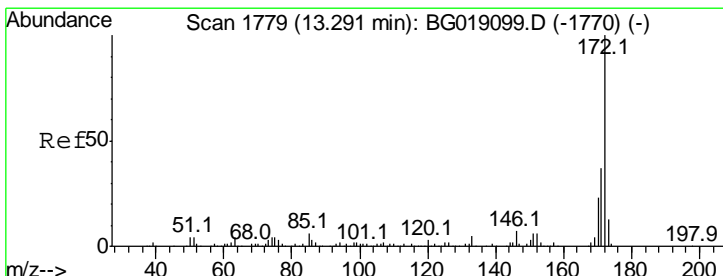
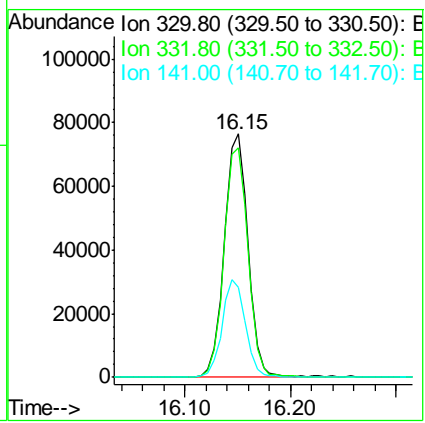
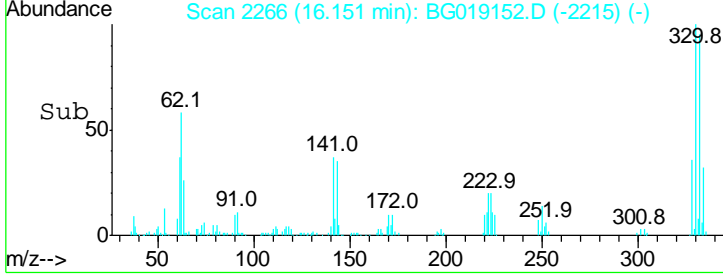
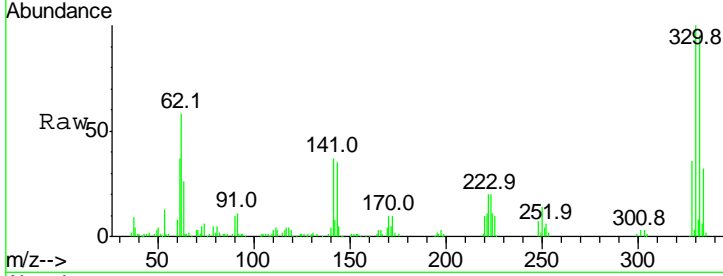




#41
 2,4,6-Tribromophenol
 Concen: 156.80 ng
 RT: 16.15 min Scan# 2266
 Delta R.T. -0.00 min
 Lab File: BG019152.D
 Acq: 12 Oct 2015 8:36

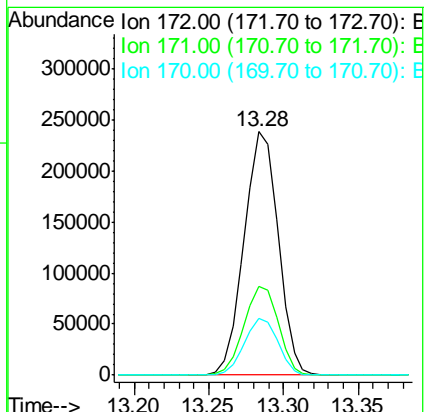
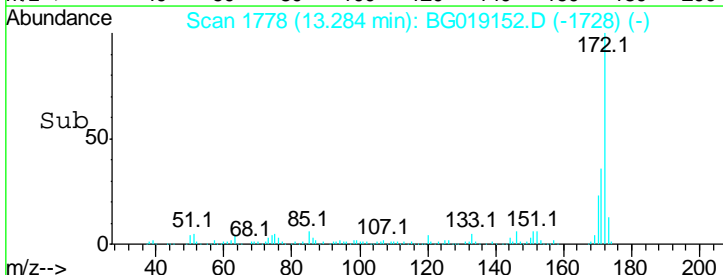
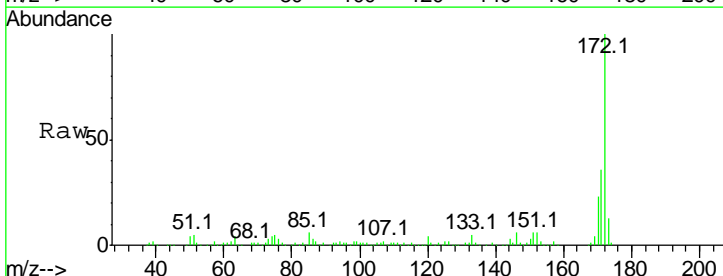
Instrument :
 BNA_G
 ClientSampled :
 MW3

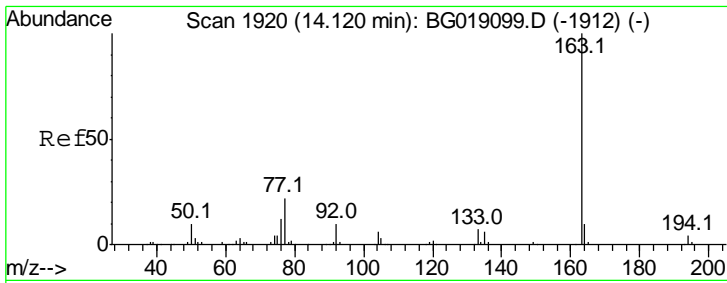
Tgt Ion	Resp	Lower	Upper
330	100		
332	95.9	77.3	115.9
141	39.4	30.7	46.1



#44
 2-Fluorobiphenyl
 Concen: 104.58 ng
 RT: 13.28 min Scan# 1778
 Delta R.T. -0.01 min
 Lab File: BG019152.D
 Acq: 12 Oct 2015 8:36

Tgt Ion	Resp	Lower	Upper
172	100		
171	36.4	29.9	44.9
170	23.4	18.6	27.8

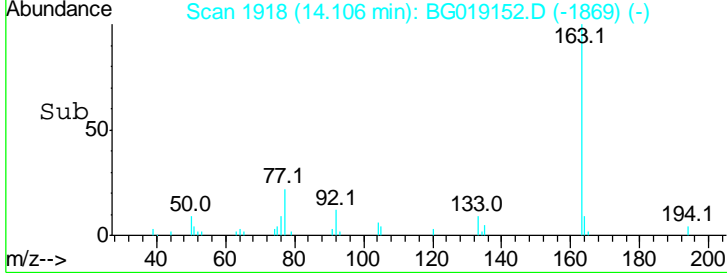
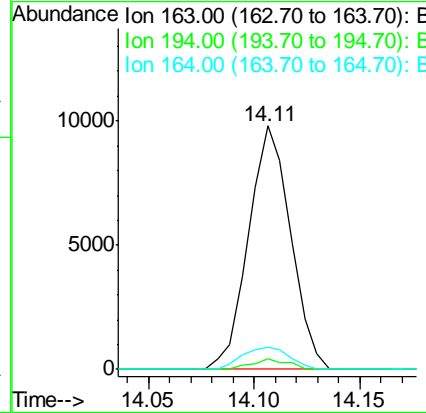
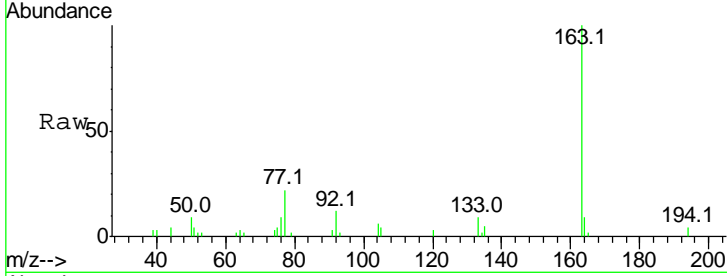




#49
 Dimethylphthalate
 Concen: 3.09 ng
 RT: 14.11 min Scan# 1918
 Delta R.T. -0.01 min
 Lab File: BG019152.D
 Acq: 12 Oct 2015 8:36

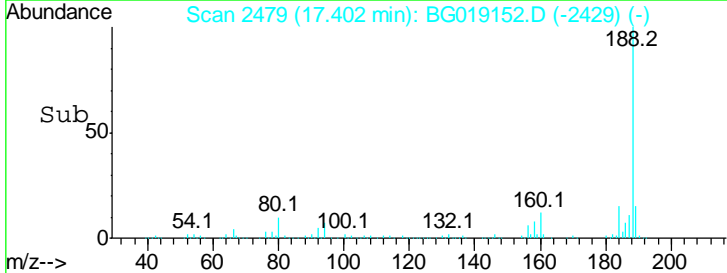
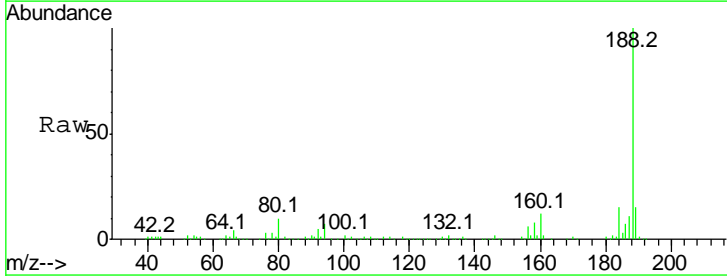
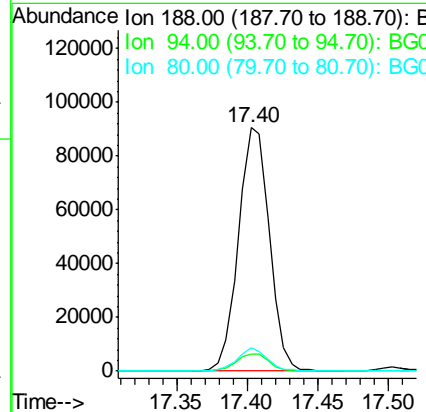
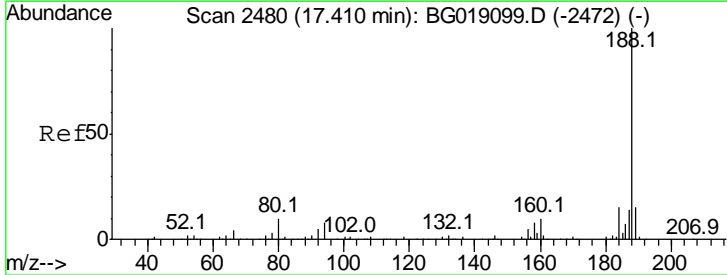
Instrument :
 BNA_G
 ClientSampleID :
 MW3

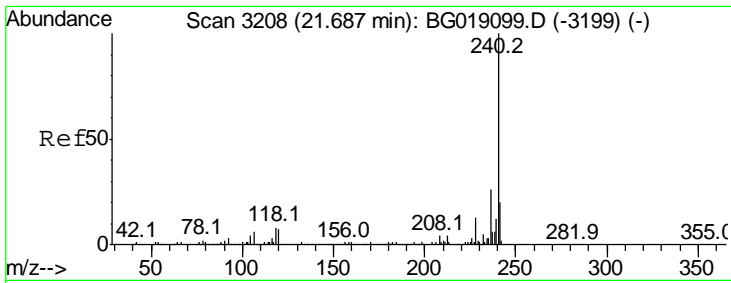
Tgt Ion	Resp	Lower	Upper
163	100		
194	4.4	3.2	4.8
164	9.2	8.1	12.1



#63
 Phenanthrene-d10
 Concen: 20.00 ng
 RT: 17.40 min Scan# 2479
 Delta R.T. -0.01 min
 Lab File: BG019152.D
 Acq: 12 Oct 2015 8:36

Tgt Ion	Resp	Lower	Upper
188	100		
94	7.1	6.4	9.6
80	9.8	7.6	11.4

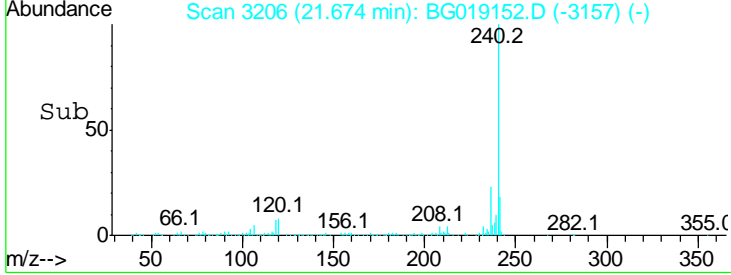
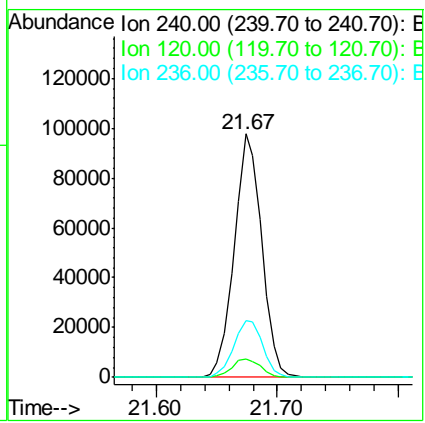
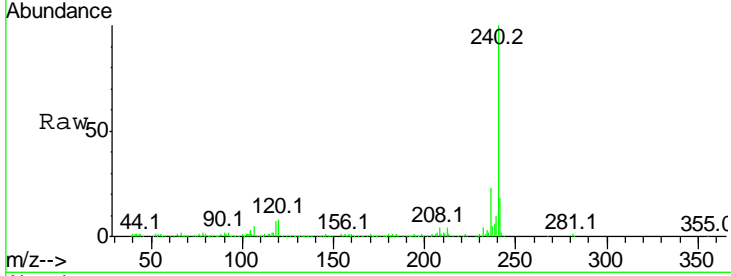




#75
 Chrysene-d12
 Concen: 20.00 ng
 RT: 21.67 min Scan# 3206
 Delta R.T. -0.01 min
 Lab File: BG019152.D
 Acq: 12 Oct 2015 8:36

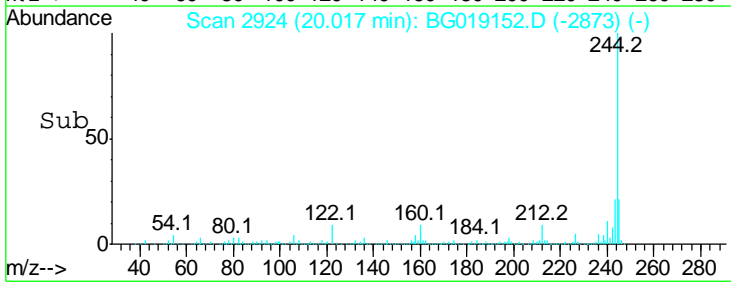
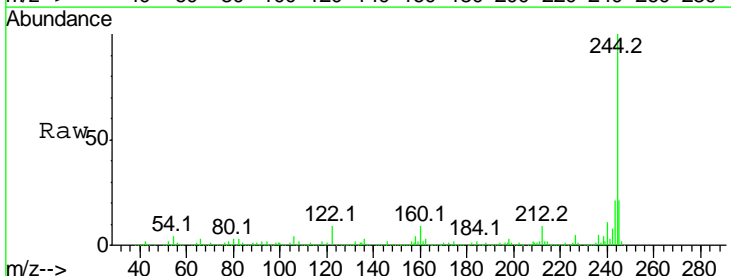
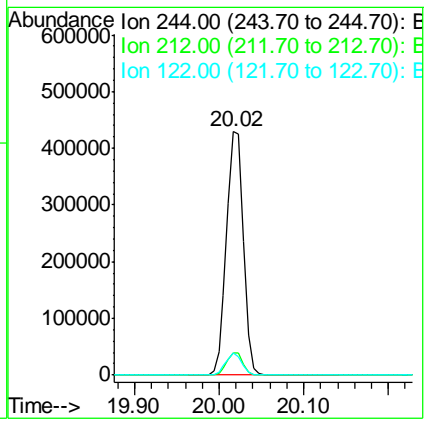
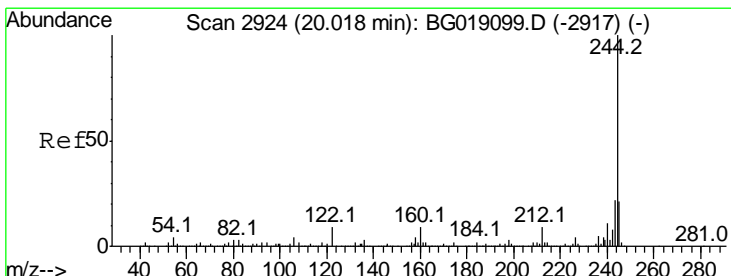
Instrument :
 BNA_G
 ClientSampled :
 MW3

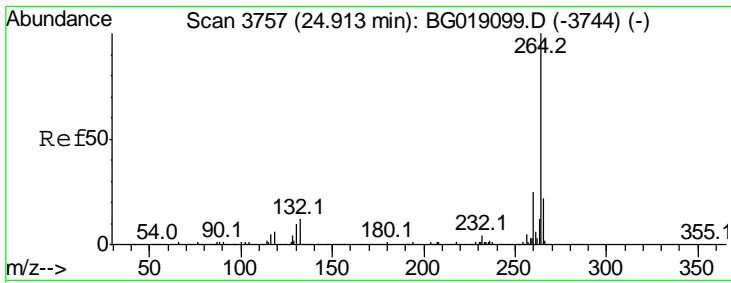
Tgt Ion	Resp	Lower	Upper
240	100		
120	7.6	5.8	8.6
236	23.2	21.2	31.8



#78
 Terphenyl-d14
 Concen: 100.77 ng
 RT: 20.02 min Scan# 2924
 Delta R.T. -0.00 min
 Lab File: BG019152.D
 Acq: 12 Oct 2015 8:36

Tgt Ion	Resp	Lower	Upper
244	100		
212	9.2	6.8	10.2
122	8.9	7.4	11.2





#86
 Perylene-d12
 Concen: 20.00 ng
 RT: 24.90 min Scan# 3755
 Delta R.T. -0.01 min
 Lab File: BG019152.D
 Acq: 12 Oct 2015 8:36

Instrument :
 BNA_G
 ClientSampled :
 MW3

Tot Ion: 264 Resp: 156557

Ion	Ratio	Lower	Upper
264	100		
260	23.3	20.1	30.1
265	22.3	17.2	25.8

