

Data Path : Z:\svoasrv\HPCHEM1\BNA_G\Data\BG101220\
 Data File : BG046864.D
 Acq On : 13 Oct 2020 5:49
 Operator : CG/JU
 Sample : L4339-01
 Misc :
 ALS Vial : 23 Sample Multiplier: 1

Instrument :
 BNA_G
 ClientSampleId :
 QUAD-1

Quant Time: Oct 13 07:12:45 2020
 Quant Method : Z:\SVOASRV\HPCHEM1\BNA_G\METHODS\8270-BG092220.M
 Quant Title : ASP BNA STANDARDS FOR 5 POINT CALIBRATION
 QLast Update : Wed Oct 07 11:38:17 2020
 Response via : Initial Calibration

Compound	R.T.	QIon	Response	Conc	Units	Dev(Min)

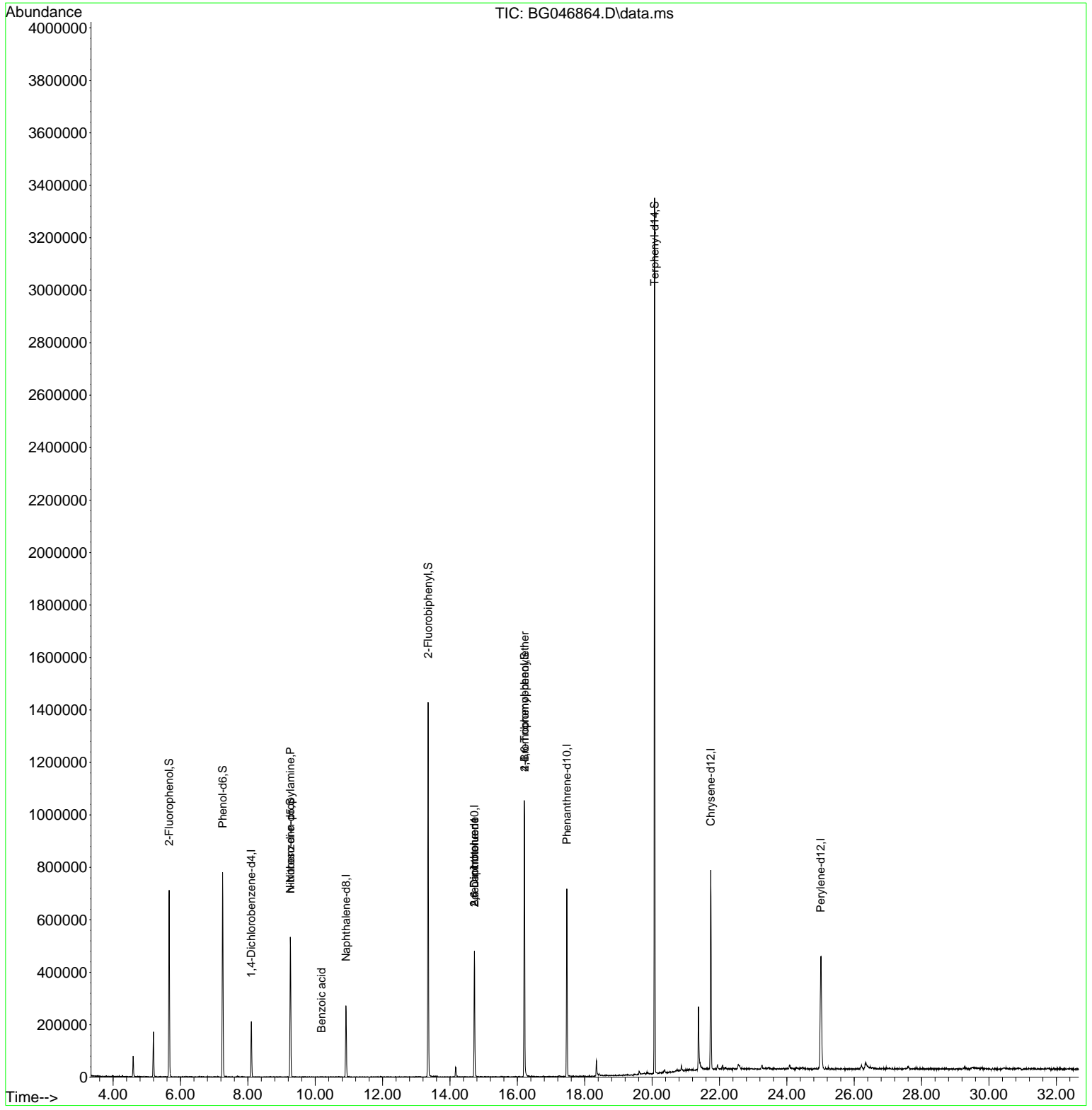
Internal Standards						
1) 1,4-Dichlorobenzene-d4	8.104	152	57752	20.00	ng	0.00
21) Naphthalene-d8	10.913	136	225220	20.00	ng	0.00
39) Acenaphthene-d10	14.726	164	167510	20.00	ng	0.00
64) Phenanthrene-d10	17.470	188	446282	20.00	ng	# 0.00
76) Chrysene-d12	21.741	240	486510	20.00	ng	#-0.02
86) Perylene-d12	25.008	264	482840	20.00	ng	-0.02
System Monitoring Compounds						
5) 2-Fluorophenol	5.666	112	287837	79.84	ng	0.00
7) Phenol-d6	7.253	99	418513	82.30	ng	0.00
23) Nitrobenzene-d5	9.262	82	309730	73.16	ng	0.00
42) 2,4,6-Tribromophenol	16.213	330	214140	96.95	ng	0.00
45) 2-Fluorobiphenyl	13.351	172	746173	63.06	ng	0.00
79) Terphenyl-d14	20.073	244	1481902	61.05	ng	0.00
Target Compounds						
9) Benzaldehyde	7.229	77	196	Below Cal	#	1
19) n-Nitroso-di-n-propyla...	9.262	70	44033	12.63	ng	# 80
32) Benzoic acid	10.190	122	58	6.37	ng	# 1
51) 2,6-Dinitrotoluene	14.726	165	22567	10.38	ng	# 35
57) 2,4-Dinitrotoluene	14.726	165	22567	7.84	ng	# 33
67) 4-Bromophenyl-phenylether	16.213	248	13216	2.34	ng	# 1

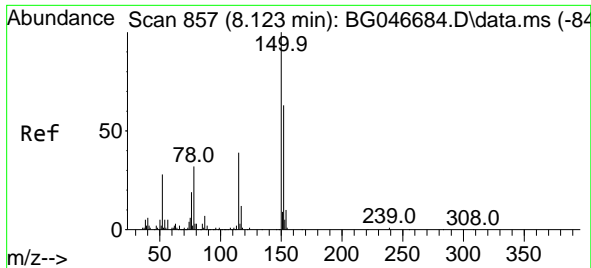
(#) = qualifier out of range (m) = manual integration (+) = signals summed

Data Path : Z:\svoasrv\HPCHEM1\BNA_G\Data\BG101220\
 Data File : BG046864.D
 Acq On : 13 Oct 2020 5:49
 Operator : CG/JU
 Sample : L4339-01
 Misc :
 ALS Vial : 23 Sample Multiplier: 1

Instrument :
 BNA_G
 ClientSampleId :
 QUAD-1

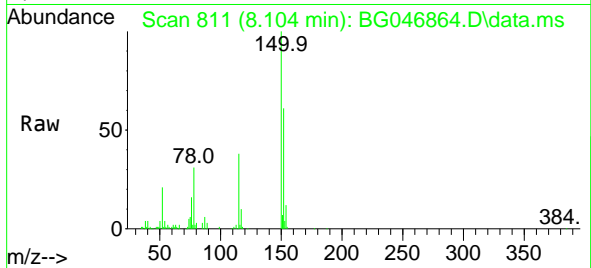
Quant Time: Oct 13 07:12:45 2020
 Quant Method : Z:\SVOASRV\HPCHEM1\BNA_G\METHODS\8270-BG092220.M
 Quant Title : ASP BNA STANDARDS FOR 5 POINT CALIBRATION
 QLast Update : Wed Oct 07 11:38:17 2020
 Response via : Initial Calibration



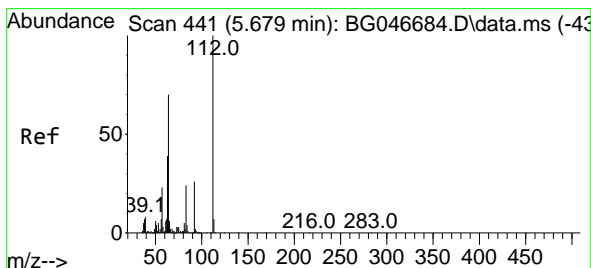
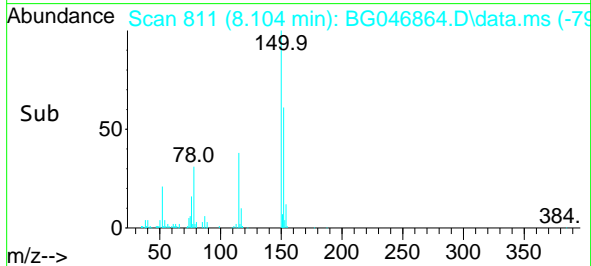
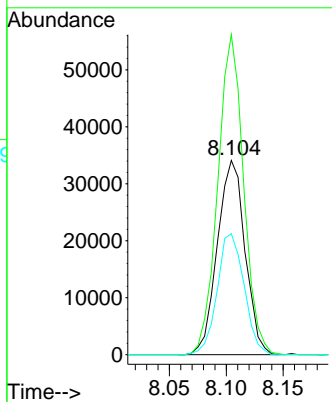


#1
 1,4-Dichlorobenzene-d4
 Concen: 20.00 ng
 RT: 8.104 min Scan# 811
 Delta R.T. -0.004 min
 Lab File: BG046864.D
 Acq: 13 Oct 2020 5:49

Instrument :
 BNA_G
 ClientSampled :
 QUAD-1

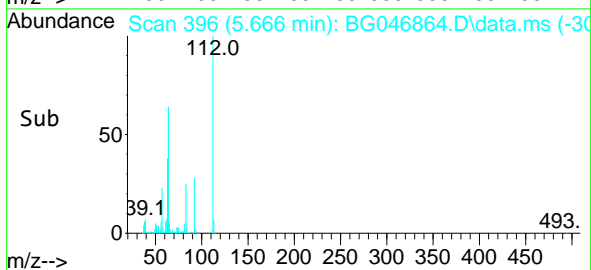
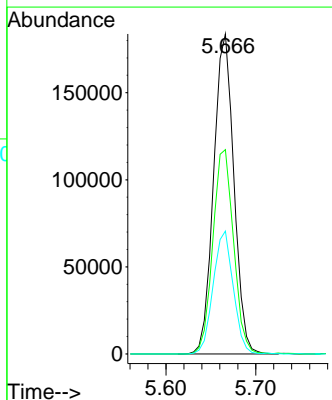
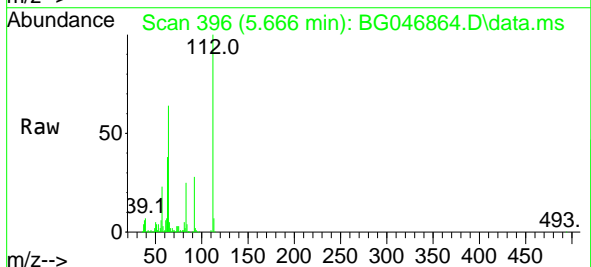


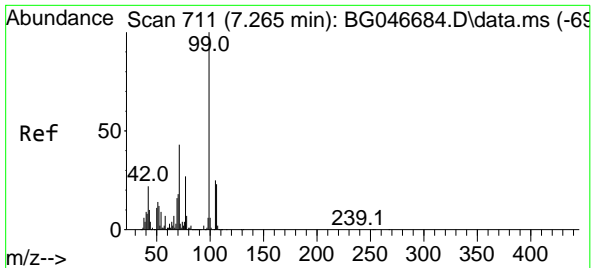
Tgt Ion:152 Resp: 57752
 Ion Ratio Lower Upper
 152 100
 150 164.7 125.0 187.6
 115 62.3 41.8 62.6



#5
 2-Fluorophenol
 Concen: 79.84 ng
 RT: 5.666 min Scan# 396
 Delta R.T. -0.003 min
 Lab File: BG046864.D
 Acq: 13 Oct 2020 5:49

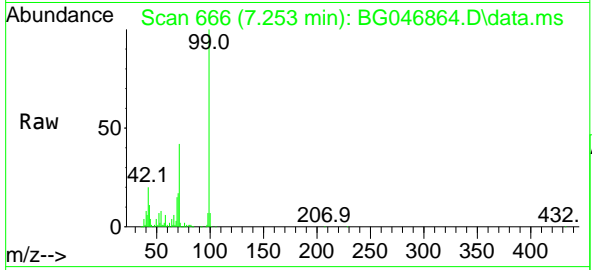
Tgt Ion:112 Resp: 287837
 Ion Ratio Lower Upper
 112 100
 64 63.8 46.7 70.1
 63 38.4 22.8 34.2#



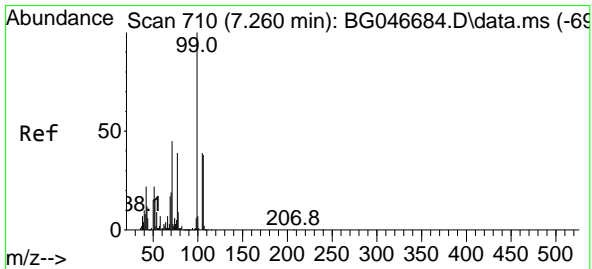
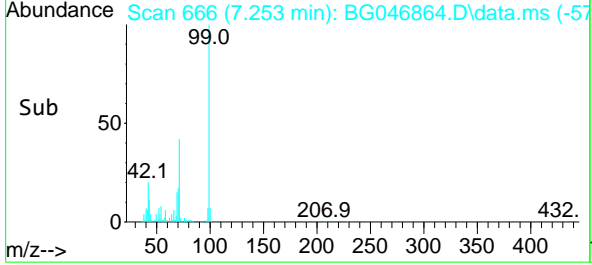
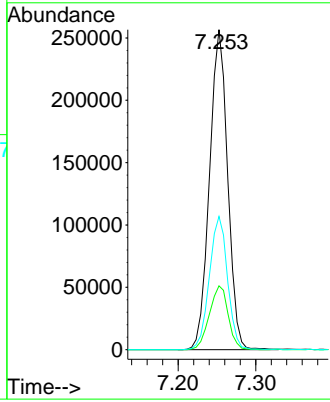


#7
 Phenol-d6
 Concen: 82.30 ng
 RT: 7.253 min Scan# 666
 Delta R.T. -0.003 min
 Lab File: BG046864.D
 Acq: 13 Oct 2020 5:49

Instrument :
 BNA_G
ClientSampled :
 QUAD-1

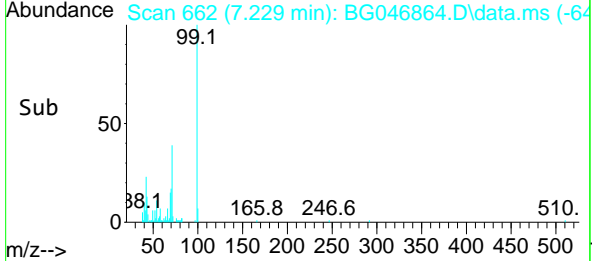
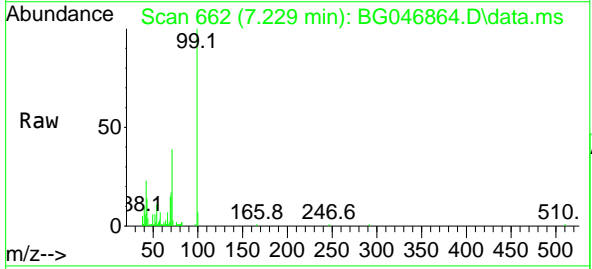
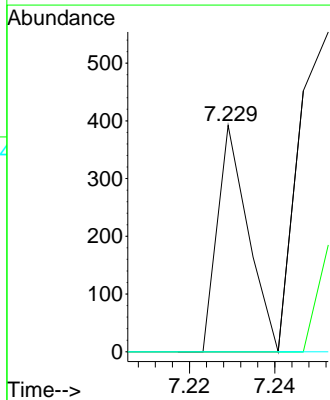


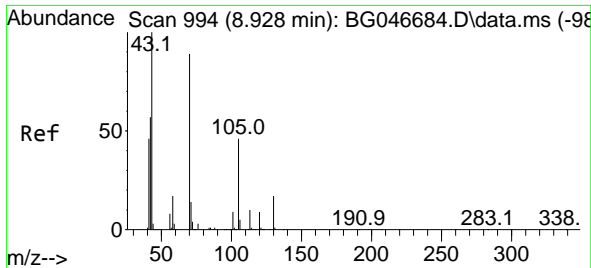
Tgt Ion	Resp	Lower	Upper
99	418513		
99	100		
42	20.0	12.8	19.2#
71	41.7	24.6	36.8#



#9
 Benzaldehyde
 Concen: Below Cal
 RT: 7.229 min Scan# 662
 Delta R.T. -0.015 min
 Lab File: BG046864.D
 Acq: 13 Oct 2020 5:49

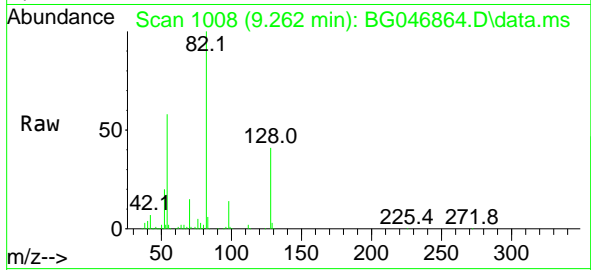
Tgt Ion	Resp	Lower	Upper
77	196		
77	100		
105	0.0	85.9	125.9#
106	0.0	80.9	120.9#





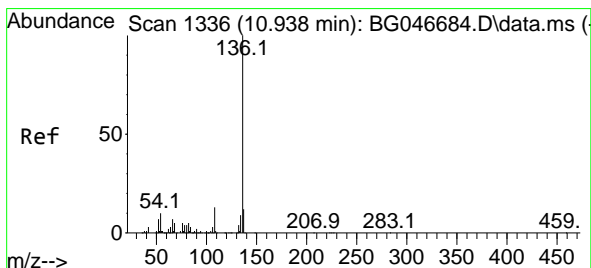
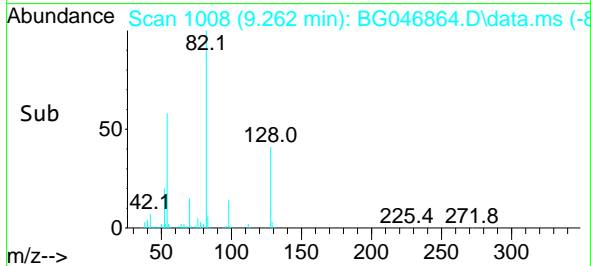
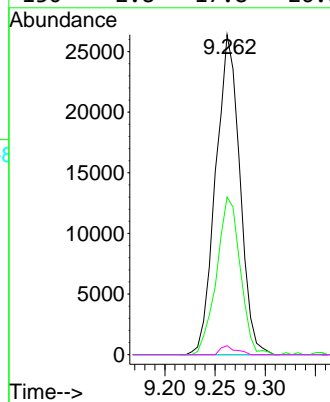
#19
 n-Nitroso-di-n-propylamine
 Concen: 12.63 ng
 RT: 9.262 min Scan# 1008
 Delta R.T. 0.349 min
 Lab File: BG046864.D
 Acq: 13 Oct 2020 5:49

Instrument :
 BNA_G
 ClientSampled :
 QUAD-1

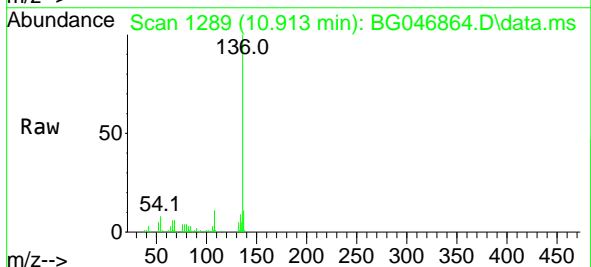


Tgt Ion: 70 Resp: 44033

Ion	Ratio	Lower	Upper
70	100		
42	49.3	45.6	68.4
101	0.0	8.4	12.6#
130	2.8	17.8	26.8#

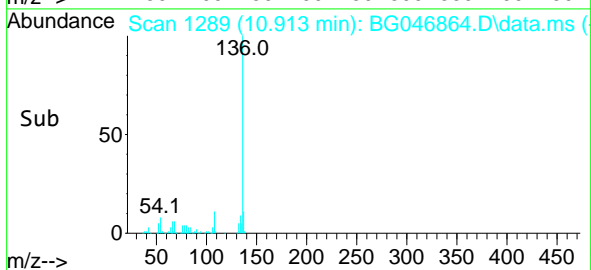
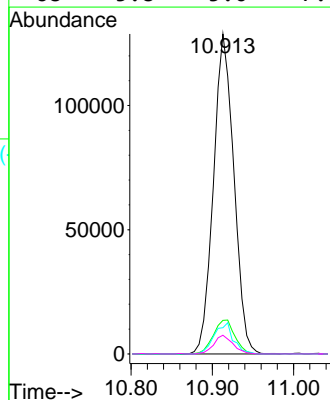


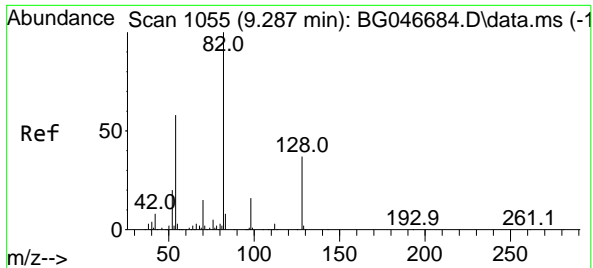
#21
 Naphthalene-d8
 Concen: 20.00 ng
 RT: 10.913 min Scan# 1289
 Delta R.T. -0.009 min
 Lab File: BG046864.D
 Acq: 13 Oct 2020 5:49



Tgt Ion: 136 Resp: 225220

Ion	Ratio	Lower	Upper
136	100		
137	10.5	9.1	13.7
54	8.2	6.2	9.4
68	5.8	5.0	7.4

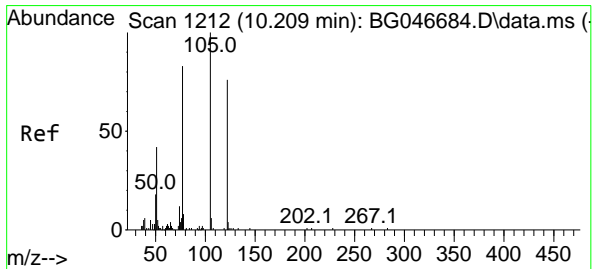
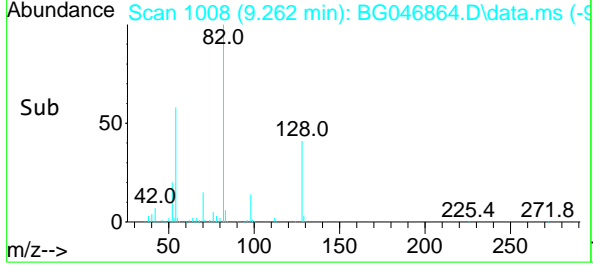
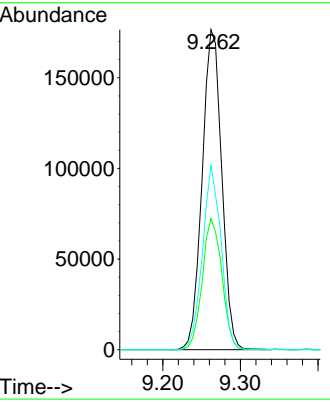
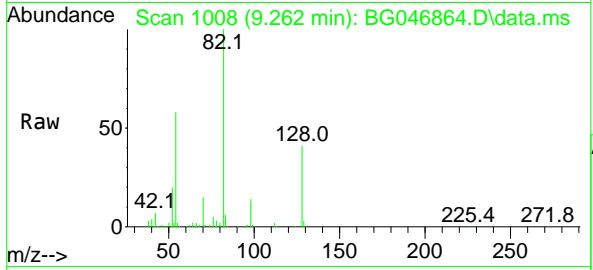




#23
 Nitrobenzene-d5
 Concen: 73.16 ng
 RT: 9.262 min Scan# 1008
 Delta R.T. -0.009 min
 Lab File: BG046864.D
 Acq: 13 Oct 2020 5:49

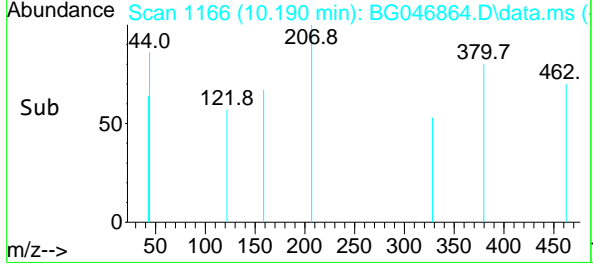
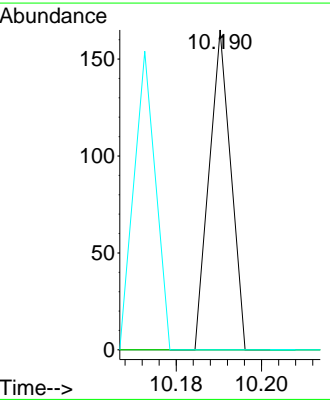
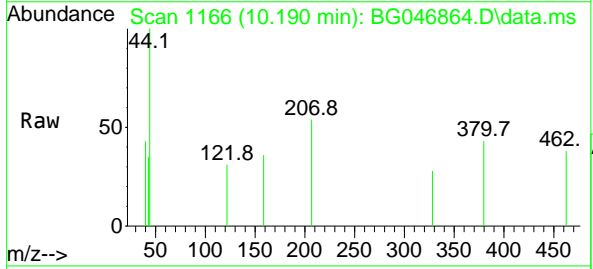
Instrument :
 BNA_G
ClientSampled :
 QUAD-1

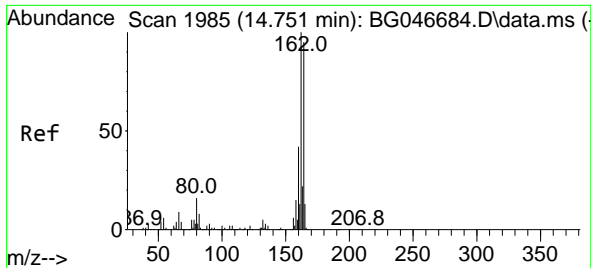
Tgt Ion	Resp	Lower	Upper
82	309730		
128	41.0	37.0	55.6
54	57.6	39.0	58.4



#32
 Benzoic acid
 Concen: 6.37 ng
 RT: 10.190 min Scan# 1166
 Delta R.T. -0.003 min
 Lab File: BG046864.D
 Acq: 13 Oct 2020 5:49

Tgt Ion	Resp	Lower	Upper
122	58		
122	100		
105	0.0	103.7	143.7#
77	0.0	63.0	103.0#

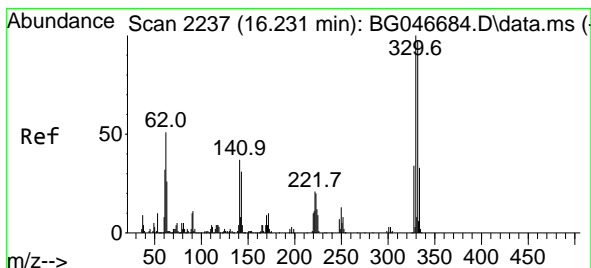
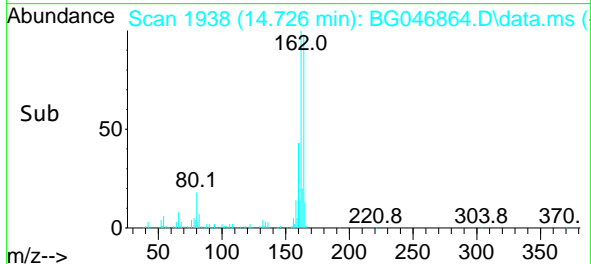
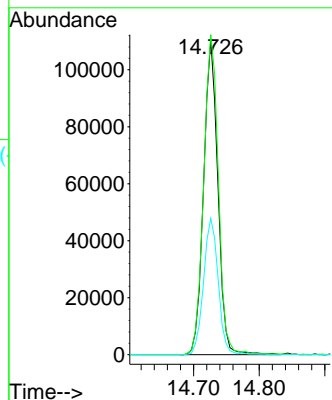
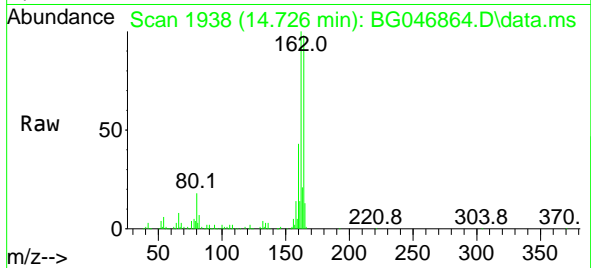




#39
 Acenaphthene-d10
 Concen: 20.00 ng
 RT: 14.726 min Scan# 1938
 Delta R.T. -0.009 min
 Lab File: BG046864.D
 Acq: 13 Oct 2020 5:49

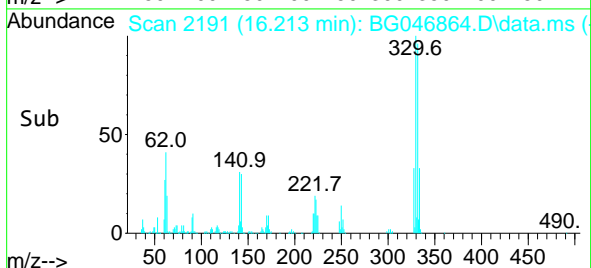
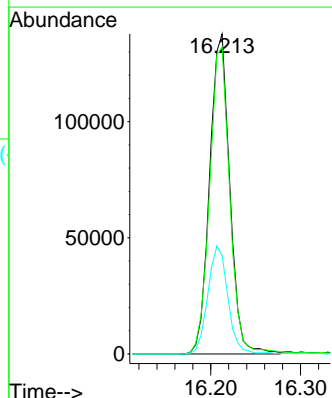
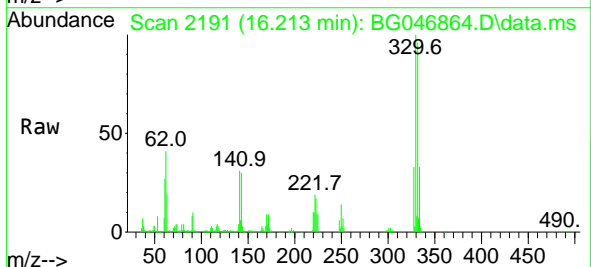
Instrument :
 BNA_G
 ClientSampled :
 QUAD-1

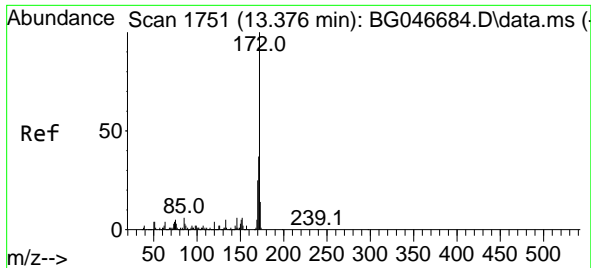
Tgt Ion:164 Resp: 167510
 Ion Ratio Lower Upper
 164 100
 162 101.6 82.3 123.5
 160 43.2 35.3 52.9



#42
 2,4,6-Tribromophenol
 Concen: 96.95 ng
 RT: 16.213 min Scan# 2191
 Delta R.T. -0.003 min
 Lab File: BG046864.D
 Acq: 13 Oct 2020 5:49

Tgt Ion:330 Resp: 214140
 Ion Ratio Lower Upper
 330 100
 332 96.4 76.5 114.7
 141 33.8 26.0 39.0

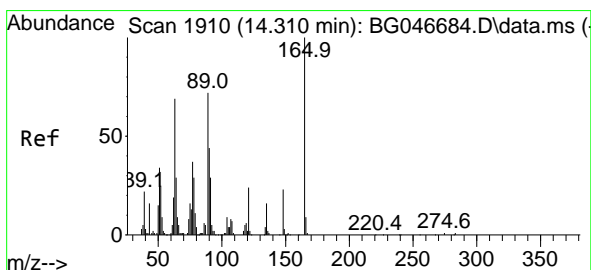
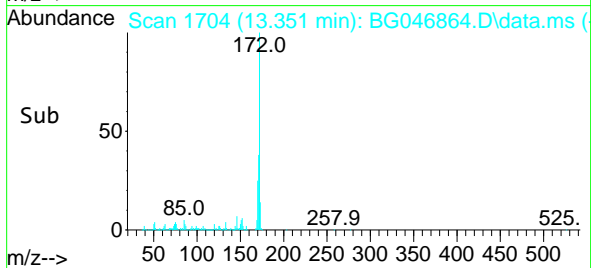
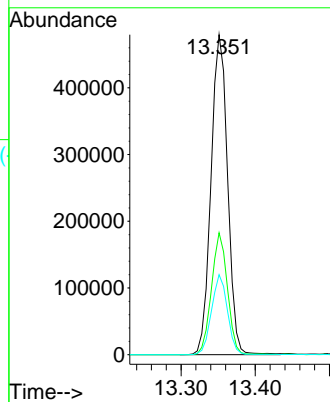
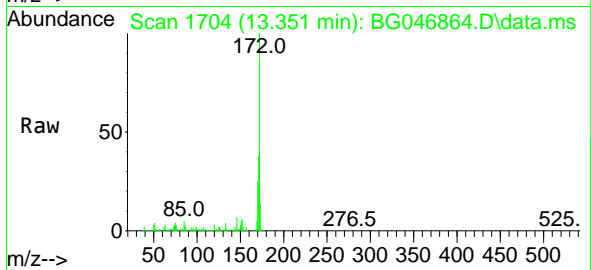




#45
 2-Fluorobiphenyl
 Concen: 63.06 ng
 RT: 13.351 min Scan# 1704
 Delta R.T. -0.009 min
 Lab File: BG046864.D
 Acq: 13 Oct 2020 5:49

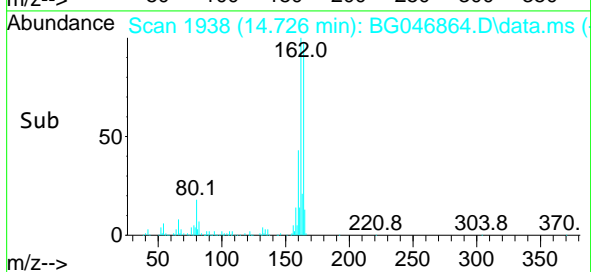
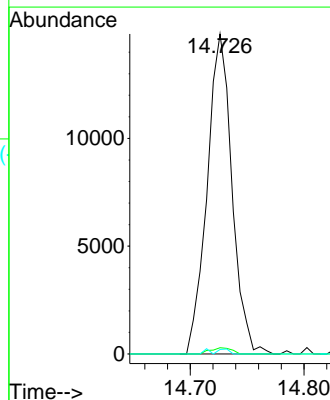
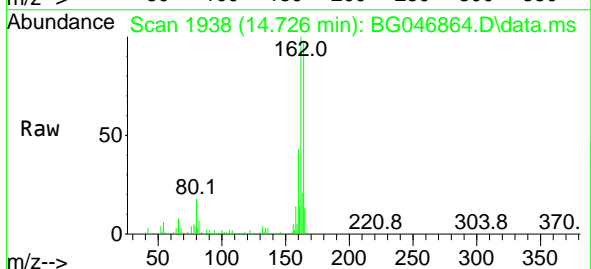
Instrument :
 BNA_G
 ClientSampled :
 QUAD-1

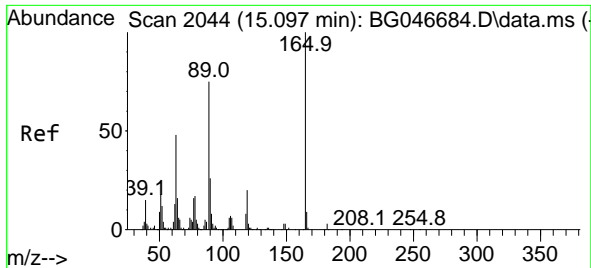
Tgt Ion	Resp	Lower	Upper
172	100		
171	38.1	31.3	46.9
170	25.0	20.8	31.2



#51
 2,6-Dinitrotoluene
 Concen: 10.38 ng
 RT: 14.726 min Scan# 1938
 Delta R.T. 0.426 min
 Lab File: BG046864.D
 Acq: 13 Oct 2020 5:49

Tgt Ion	Resp	Lower	Upper
165	100		
63	2.0	33.7	50.5#
89	1.4	36.6	54.8#

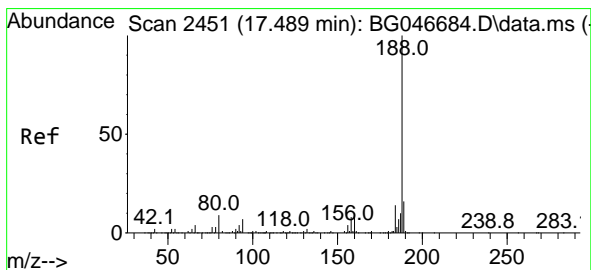
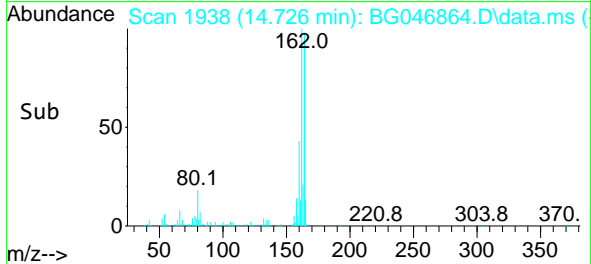
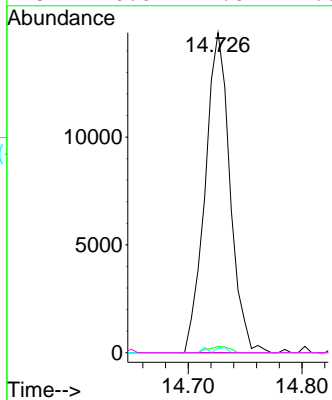
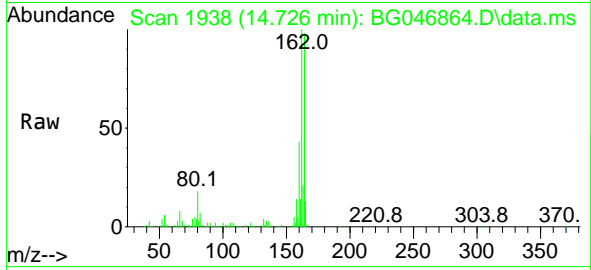




#57
 2,4-Dinitrotoluene
 Concen: 7.84 ng
 RT: 14.726 min Scan# 1938
 Delta R.T. -0.356 min
 Lab File: BG046864.D
 Acq: 13 Oct 2020 5:49

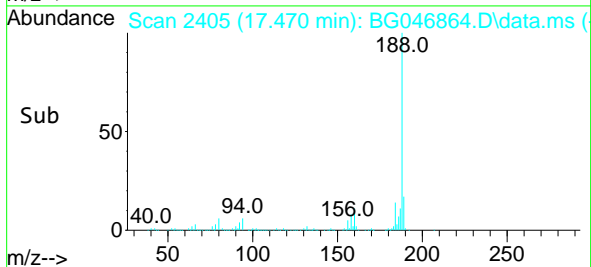
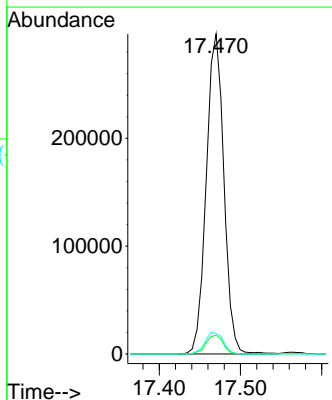
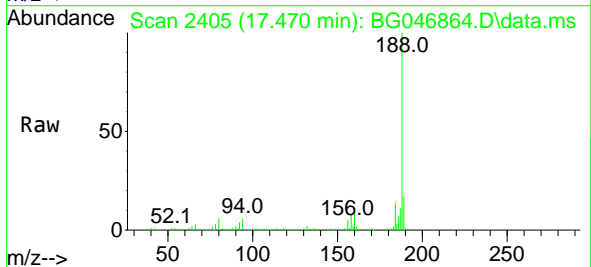
Instrument :
 BNA_G
ClientSampled :
 QUAD-1

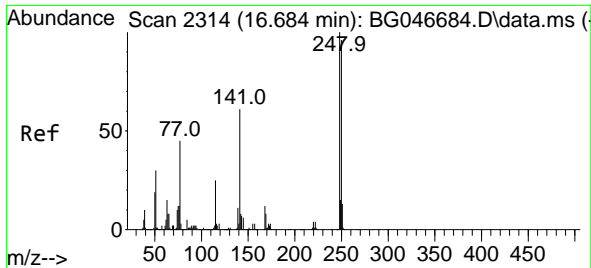
Tgt Ion	Resp	Lower	Upper
165	100		
63	2.0	26.4	39.6#
89	1.4	47.8	71.8#
182	0.0	2.6	4.0#



#64
 Phenanthrene-d10
 Concen: 20.00 ng
 RT: 17.470 min Scan# 2405
 Delta R.T. -0.009 min
 Lab File: BG046864.D
 Acq: 13 Oct 2020 5:49

Tgt Ion	Resp	Lower	Upper
188	100		
94	5.9	6.3	9.5#
80	6.3	7.0	10.6#

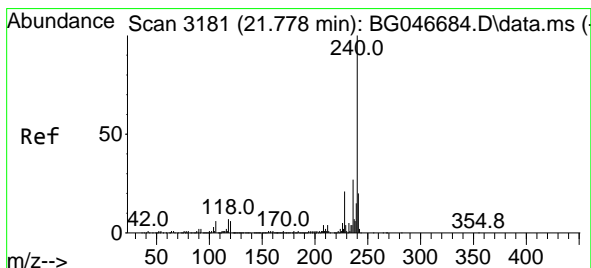
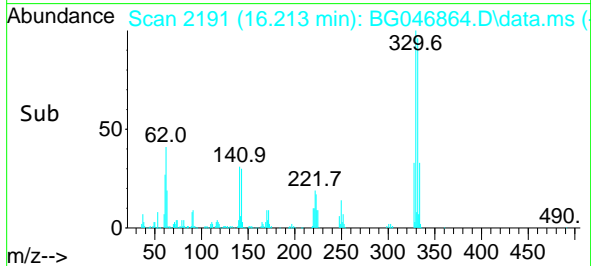
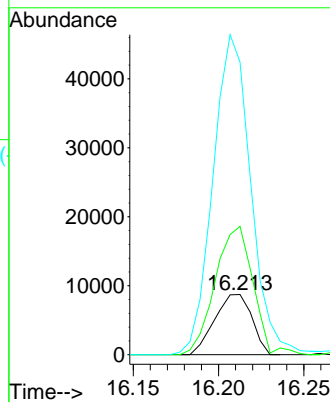
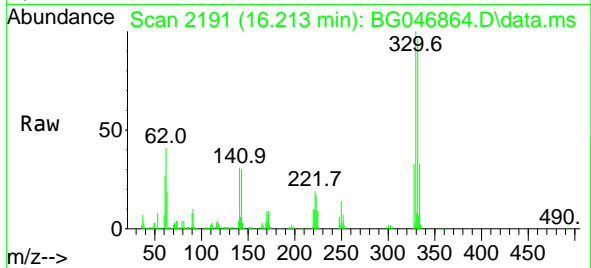




#67
 4-Bromophenyl-phenylether
 Concen: 2.34 ng
 RT: 16.213 min Scan# 2191
 Delta R.T. -0.450 min
 Lab File: BG046864.D
 Acq: 13 Oct 2020 5:49

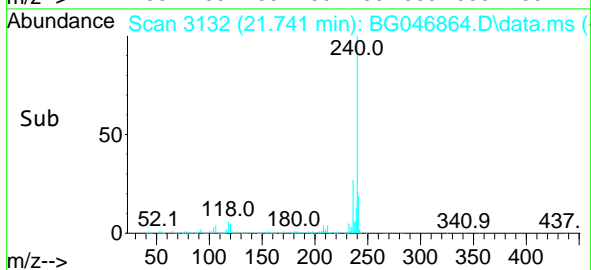
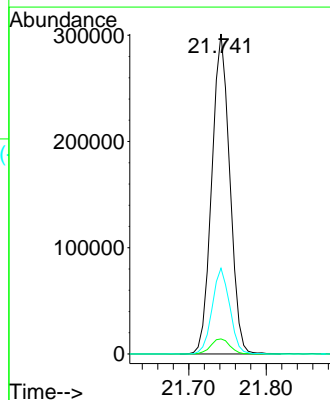
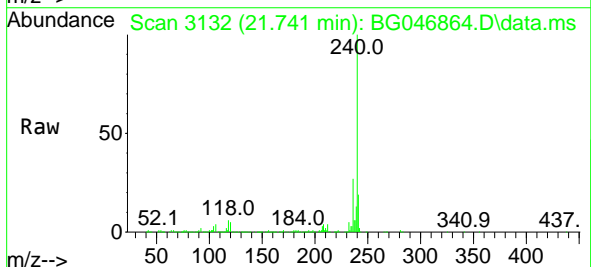
Instrument :
 BNA_G
 ClientSampled :
 QUAD-1

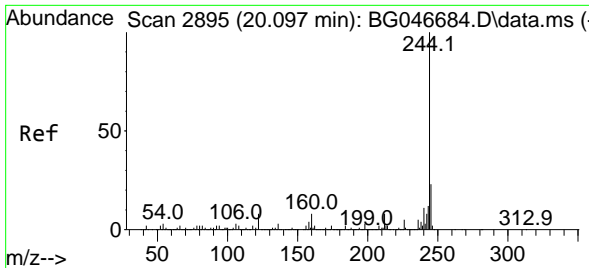
Tgt Ion:248 Resp: 13216
 Ion Ratio Lower Upper
 248 100
 250 204.8 78.9 118.3#
 141 372.3 46.2 69.4#



#76
 Chrysene-d12
 Concen: 20.00 ng
 RT: 21.741 min Scan# 3132
 Delta R.T. -0.015 min
 Lab File: BG046864.D
 Acq: 13 Oct 2020 5:49

Tgt Ion:240 Resp: 486510
 Ion Ratio Lower Upper
 240 100
 120 4.7 6.2 9.4#
 236 26.8 20.5 30.7



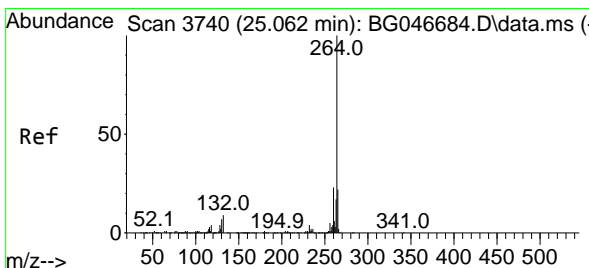
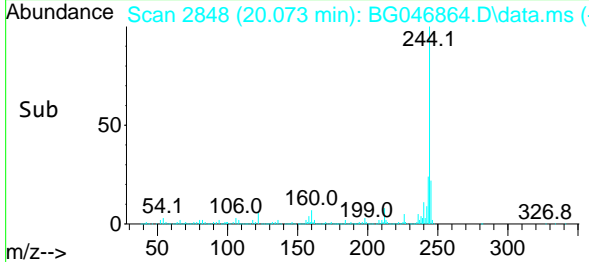
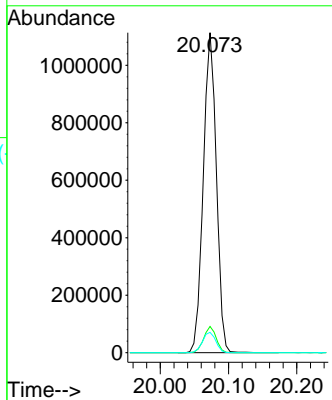
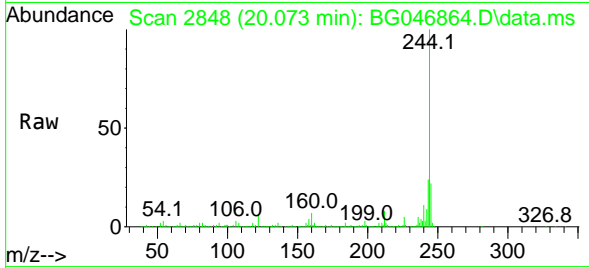


#79
 Terphenyl-d14
 Concen: 61.05 ng
 RT: 20.073 min Scan# 2848
 Delta R.T. -0.009 min
 Lab File: BG046864.D
 Acq: 13 Oct 2020 5:49

Instrument :
 BNA_G
ClientSampled :
 QUAD-1

Tgt Ion:244 Resp: 1481902

Ion	Ratio	Lower	Upper
244	100		
212	8.2	6.7	10.1
122	6.4	7.8	11.6#



#86
 Perylene-d12
 Concen: 20.00 ng
 RT: 25.008 min Scan# 3688
 Delta R.T. -0.021 min
 Lab File: BG046864.D
 Acq: 13 Oct 2020 5:49

Tgt Ion:264 Resp: 482840

Ion	Ratio	Lower	Upper
264	100		
260	24.3	18.8	28.2
265	21.7	17.8	26.8

