

Data Path : Z:\HPCHEM1\BNA G\DATA\BG101415\  
 Data File : BG019188.D  
 Acq On : 13 Oct 2015 20:54  
 Operator : UM/NP  
 Sample : G3996-02  
 Misc :  
 ALS Vial : 9 Sample Multiplier: 1

Instrument :  
 BNA\_G  
 ClientSampleId :  
 E5LG2

Quant Time: Oct 14 03:58:33 2015  
 Quant Method : Z:\HPCHEM1\BNA G\METHODS\SOM02.2-EPA-BG100415.M  
 Quant Title : SVOA CALIBRATION  
 QLast Update : Wed Oct 14 03:54:50 2015  
 Response via : Initial Calibration

Internal Standards	R.T.	QIon	Response	Conc	Units	Dev(Min)
1) 1,4-Dichlorobenzene-d4	8.03	152	17501	20.00	ng/ul	0.00
18) Naphthalene-d8	10.84	136	82240	20.00	ng/ul	0.00
36) Acenaphthene-d10	14.66	164	55891	20.00	ng/ul	0.00
62) Phenanthrene-d10	17.41	188	128556	20.00	ng/ul	0.00
78) Chrysene-d12	21.68	240	153310	20.00	ng/ul	0.00
86) Perylene-d12	24.90	264	149494	20.00	ng/ul	0.00

## System Monitoring Compounds

3) 1,4-Dioxane-d8	3.47	96	718	1.85	ng/uL	0.00
5) Phenol-d5	7.19	99	22995	15.25	ng/ul	0.00
7) Bis-(2-Chloroethyl)ether-d	7.35	67	14936	15.30	ng/ul	0.00
9) 2-Chlorophenol-d4	7.56	132	17132	15.13	ng/ul	0.00
13) 4-Methylphenol-d8	8.73	113	19649	16.57	ng/ul	0.00
19) Nitrobenzene-d5	9.19	128	9357	15.05	ng/ul	0.00
22) 2-Nitrophenol-d4	9.91	143	9921	15.51	ng/ul	0.00
26) 2,4-Dichlorophenol-d3	10.45	165	19909	15.55	ng/ul	0.00
29) 4-Chloroaniline-d4	10.97	131	5009	3.21	ng/ul	0.00
44) Dimethylphthalate-d6	14.06	166	73547	16.69	ng/ul	0.00
47) Acenaphthylene-d8	14.35	160	81099	14.88	ng/ul	0.00
52) 4-Nitrophenol-d4	14.86	143	9710	10.91	ng/ul	0.00
58) Fluorene-d10	15.65	176	63634	15.95	ng/ul	0.00
63) 4,6-Dinitro-2-methylphenol	15.77	200	8745	12.54	ng/ul	0.00
71) Anthracene-d10	17.50	188	97736	16.15	ng/ul	0.00
79) Pyrene-d10	19.79	212	105183	14.81	ng/ul	0.00
90) Benzo(a)pyrene-d12	24.68	264	114541	14.97	ng/ul	-0.01

## Target Compounds

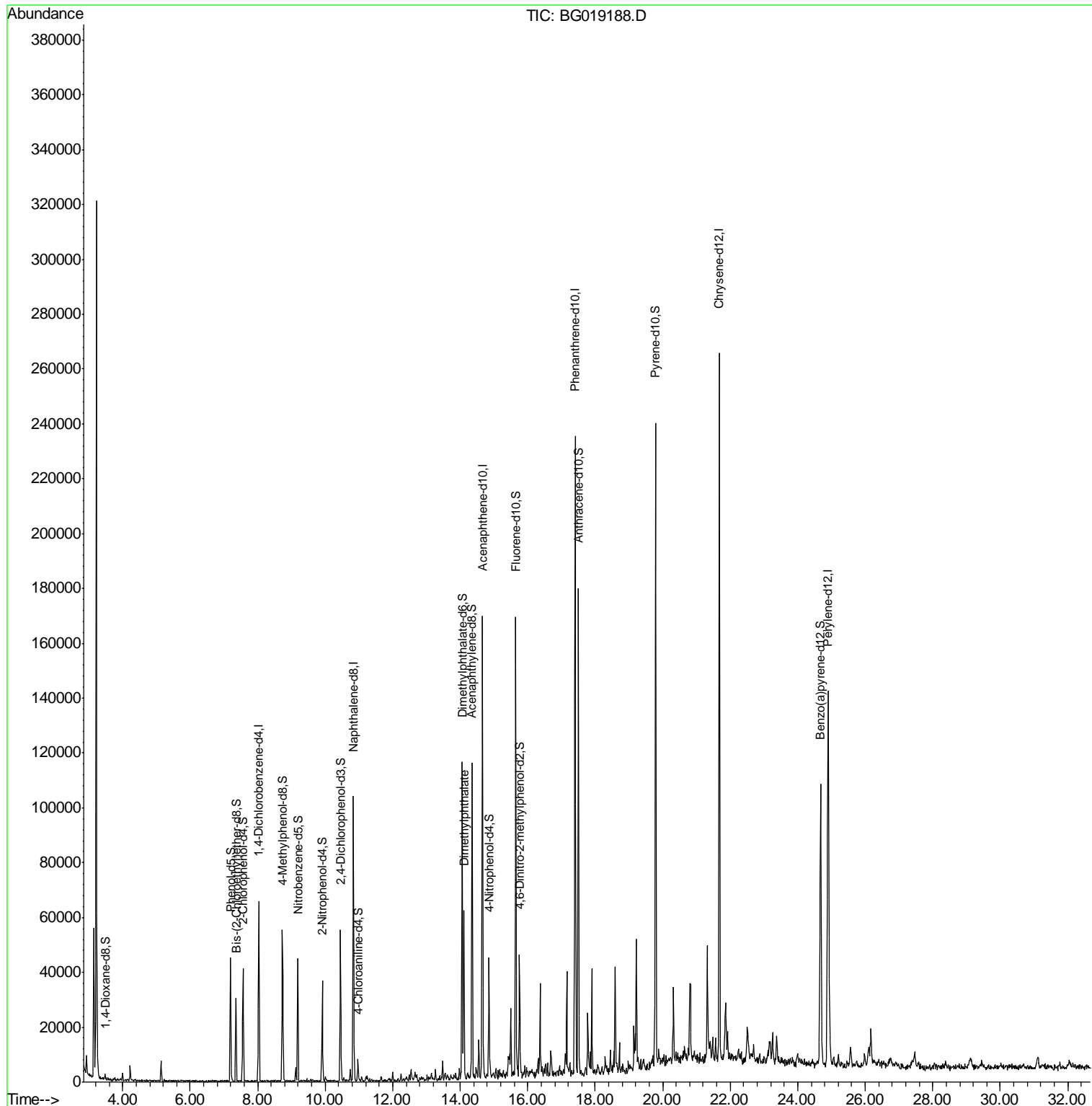
Target Compounds	R.T.	QIon	Response	Conc	Units	Ovalue
45) Dimethylphthalate	14.11	163	37277	8.28	ng/ul	99

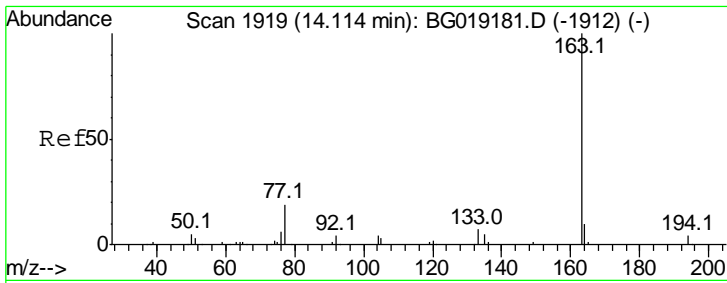
(#) = qualifier out of range (m) = manual integration (+) = signals summed

Data Path : Z:\HPCHEM1\BNA G\DATA\BG101415\  
 Data File : BG019188.D  
 Acq On : 13 Oct 2015 20:54  
 Operator : UM/NP  
 Sample : G3996-02  
 Misc :  
 ALS Vial : 9 Sample Multiplier: 1

Instrument :  
 BNA\_G  
 Client Sampled :  
 E5LG2

Quant Time: Oct 14 03:58:33 2015  
 Quant Method : Z:\HPCHEM1\BNA G\METHODS\SOM02.2-EPA-BG100415.M  
 Quant Title : SVOA CALIBRATION  
 QLast Update : Wed Oct 14 03:54:50 2015  
 Response via : Initial Calibration





#45  
 Dimethylphthalate  
 Concen: 8.28 ng/ul  
 RT: 14.11 min Scan# 1918  
 Delta R.T. -0.01 min  
 Lab File: BG019188.D  
 Acq: 13 Oct 2015 20:54

Instrument :  
 BNA\_G  
 ClientSampled :  
 E5LG2

Tot Ion	Ratio	Lower	Upper
163	100		
194	4.0	3.3	4.9
164	10.6	8.1	12.1

