

Data Path : Z:\HPCHEM1\BNA G\DATA\BG101416\
 Data File : BG024348.D
 Acq On : 14 Oct 2016 12:04
 Operator : UM/SJ
 Sample : H5187-02
 Misc :
 ALS Vial : 5 Sample Multiplier: 1

Instrument :
 BNA_G
 ClientSampleId :
 BDPC3

Integration Parameters: LSCINT.P

Integrator: RTE
 Smoothing : ON
 Sampling : 1
 Start Thrs: 0.1
 Stop Thrs : 0

Filtering: 5
 Min Area: 0.1 % of largest Peak
 Max Peaks: 100
 Peak Location: TOP

If leading or trailing edge < 100 prefer < Baseline drop else tangent >
 Peak separation: 1

Method : Z:\HPCHEM1\BNA G\METHODS\SOM02.2-EPA-BG0100716.M
 Title : SVOA CALIBRATION

Signal : TIC

peak #	R.T. min	first scan	max scan	last scan	PK TY	peak height	corr. area	corr. % max.	% of total
1	3.408	92	97	98	rVB3	11268	14323	0.26%	0.023%
2	3.526	115	117	120	rVB4	10197	12827	0.23%	0.021%
3	3.643	133	137	144	rVB3	43574	65861	1.18%	0.107%
4	3.937	185	187	190	rBV3	9107	10910	0.20%	0.018%
5	4.413	263	268	273	rBV8	13364	31904	0.57%	0.052%
6	4.572	292	295	298	rVB5	9265	13078	0.24%	0.021%
7	4.619	302	303	312	rVB9	10458	19436	0.35%	0.032%
8	5.159	390	395	397	rBV5	9119	12723	0.23%	0.021%
9	5.641	472	477	481	rVB8	8247	13603	0.24%	0.022%
10	5.894	516	520	522	rBV5	11022	13043	0.23%	0.021%
11	6.052	543	547	550	rVB5	8342	12262	0.22%	0.020%
12	6.322	591	593	599	rBV5	12737	17726	0.32%	0.029%
13	6.416	605	609	611	rBV4	8876	11286	0.20%	0.018%
14	6.904	688	692	696	rBV7	9665	16418	0.30%	0.027%
15	7.004	706	709	713	rBV5	9928	10978	0.20%	0.018%
16	7.204	738	743	747	rBV7	6751	13850	0.25%	0.022%
17	7.415	770	779	790	rVB	774526	1404707	25.27%	2.279%
18	7.597	802	810	820	rVB	524050	887321	15.96%	1.440%
19	7.697	823	827	834	rVB8	9091	22575	0.41%	0.037%
20	7.809	838	846	857	rBV	683413	1242890	22.36%	2.017%
21	8.285	919	927	940	rBV	528817	970725	17.46%	1.575%
22	8.490	955	962	963	rBV5	7258	10501	0.19%	0.017%
23	8.520	965	967	972	rVB6	9083	15723	0.28%	0.026%
24	8.972	1035	1044	1052	rBV	959001	1641686	29.53%	2.664%
25	9.278	1091	1096	1100	rBV8	7304	12679	0.23%	0.021%
26	9.460	1118	1127	1134	rBV	747493	1365994	24.57%	2.217%
27	9.807	1180	1186	1193	rVV5	15563	31378	0.56%	0.051%
28	9.971	1211	1214	1218	rBV5	11072	18117	0.33%	0.029%
29	10.183	1239	1250	1261	rBV2	640204	1214113	21.84%	1.970%
30	10.271	1261	1265	1269	rVB7	6951	10510	0.19%	0.017%
31	10.365	1274	1281	1286	rBV10	7666	20549	0.37%	0.033%
32	10.653	1327	1330	1333	rBV4	9114	11008	0.20%	0.018%
33	10.717	1333	1341	1353	rVB	988321	1758894	31.64%	2.854%
34	10.870	1361	1367	1371	rBV8	10244	11758	0.21%	0.019%

Data Path : Z:\HPCHEM1\BNA G\DATA\BG101416\
 Data File : BG024348.D
 Acq On : 14 Oct 2016 12:04
 Operator : UM/SJ
 Sample : H5187-02
 Misc :
 ALS Vial : 5 Sample Multiplier: 1

Instrument :
 BNA_G
 ClientSampleId :
 BDPC3

Integration Parameters: LSCINT.P

Integrator: RTE
 Smoothing : ON
 Sampling : 1
 Start Thrs: 0.1
 Stop Thrs : 0

Filtering: 5
 Min Area: 0.1 % of largest Peak
 Max Peaks: 100
 Peak Location: TOP

If leading or trailing edge < 100 prefer < Baseline drop else tangent >
 Peak separation: 1

Method : Z:\HPCHEM1\BNA G\METHODS\SOM02.2-EPA-BG0100716.M
 Title : SVOA CALIBRATION

35	11.117	1398	1409	1417	rBV	776409	1473329	26.50%	2.391%
36	11.240	1421	1430	1443	rBV	925381	1696342	30.52%	2.753%
37	11.669	1498	1503	1509	rVB7	8080	21021	0.38%	0.034%
38	11.793	1519	1524	1527	rBV4	9326	12609	0.23%	0.020%
39	12.004	1555	1560	1564	rVB7	11824	20841	0.37%	0.034%
40	12.122	1579	1580	1587	rVB7	6247	10914	0.20%	0.018%
41	12.492	1636	1643	1647	rVB7	7755	21035	0.38%	0.034%
42	12.674	1671	1674	1680	rBV5	28679	36211	0.65%	0.059%
43	12.862	1701	1706	1709	rVB6	8061	13111	0.24%	0.021%
44	12.885	1709	1710	1713	rBV3	12394	12612	0.23%	0.020%
45	13.067	1737	1741	1744	rVB4	6067	11015	0.20%	0.018%
46	13.385	1792	1795	1800	rVB6	7975	12451	0.22%	0.020%
47	13.696	1843	1848	1850	rBV3	9797	13008	0.23%	0.021%
48	13.767	1854	1860	1866	rVB8	18158	27987	0.50%	0.045%
49	14.184	1927	1931	1935	rVB5	7744	12134	0.22%	0.020%
50	14.231	1935	1939	1941	rBV5	10072	13276	0.24%	0.022%
51	14.295	1943	1950	1954	rBV	1856275	2904160	52.24%	4.713%
52	14.337	1954	1957	1966	rVB	519688	730407	13.14%	1.185%
53	14.601	1993	2002	2009	rVV	1849505	3102342	55.81%	5.034%
54	14.760	2021	2029	2035	rVB3	31678	59580	1.07%	0.097%
55	14.901	2046	2053	2062	rBV	1427652	2301055	41.39%	3.734%
56	15.065	2071	2081	2091	rBV	1067812	1822301	32.78%	2.957%
57	15.159	2094	2097	2100	rVB5	12172	15676	0.28%	0.025%
58	15.194	2101	2103	2109	rVB7	14063	23271	0.42%	0.038%
59	15.253	2109	2113	2117	rBV7	15824	33961	0.61%	0.055%
60	15.365	2130	2132	2137	rVB6	12748	18316	0.33%	0.030%
61	15.429	2140	2143	2150	rVB8	12651	18513	0.33%	0.030%
62	15.659	2178	2182	2185	rBV5	16209	20608	0.37%	0.033%
63	15.700	2185	2189	2195	rVB	78741	99331	1.79%	0.161%
64	15.764	2195	2200	2204	rBV7	10452	15160	0.27%	0.025%
65	15.888	2212	2221	2229	rBV	2714158	4227051	76.04%	6.859%
66	15.988	2231	2238	2248	rVB	1099835	1655808	29.79%	2.687%
67	16.117	2250	2260	2269	rVB9	40474	116653	2.10%	0.189%
68	16.205	2272	2275	2278	rVB3	12542	12751	0.23%	0.021%
69	16.258	2280	2284	2289	rBV8	11183	17826	0.32%	0.029%
70	16.322	2293	2295	2301	rVB6	14491	17774	0.32%	0.029%
71	16.558	2330	2335	2346	rBV2	82013	169523	3.05%	0.275%

Data Path : Z:\HPCHEM1\BNA G\DATA\BG101416\
 Data File : BG024348.D
 Acq On : 14 Oct 2016 12:04
 Operator : UM/SJ
 Sample : H5187-02
 Misc :
 ALS Vial : 5 Sample Multiplier: 1

Instrument :
 BNA_G
 ClientSampleId :
 BDPC3

Integration Parameters: LSCINT.P

Integrator: RTE
 Smoothing : ON Filtering: 5
 Sampling : 1 Min Area: 0.1 % of largest Peak
 Start Thrs: 0.1 Max Peaks: 100
 Stop Thrs : 0 Peak Location: TOP

If leading or trailing edge < 100 prefer < Baseline drop else tangent >
 Peak separation: 1

Method : Z:\HPCHEM1\BNA G\METHODS\SOM02.2-EPA-BG0100716.M
 Title : SVOA CALIBRATION

72	16.822	2379	2380	2383	rBV3	10324	12262	0.22%	0.020%
73	16.910	2390	2395	2401	rBV8	16491	23536	0.42%	0.038%
74	16.992	2406	2409	2417	rVB10	30983	43282	0.78%	0.070%
75	17.063	2417	2421	2426	rVB7	13190	21517	0.39%	0.035%
76	17.127	2431	2432	2439	rVB7	12700	16256	0.29%	0.026%
77	17.351	2466	2470	2475	rBV3	53767	73305	1.32%	0.119%
78	17.404	2475	2479	2481	rBV4	19805	24264	0.44%	0.039%
79	17.639	2510	2519	2528	rBV	1835936	2987687	53.74%	4.848%
80	17.738	2528	2536	2547	rVV2	3072444	4711531	84.75%	7.646%
81	17.885	2559	2561	2565	rVB5	11171	11794	0.21%	0.019%
82	17.979	2570	2577	2589	rBV2	537255	810857	14.59%	1.316%
83	18.091	2593	2596	2599	rVB3	27340	24798	0.45%	0.040%
84	18.156	2605	2607	2612	rVB6	8670	14021	0.25%	0.023%
85	18.361	2638	2642	2652	rBV6	38599	78882	1.42%	0.128%
86	18.485	2658	2663	2674	rBV2	590038	862398	15.51%	1.399%
87	18.767	2708	2711	2715	rBV6	17333	30171	0.54%	0.049%
88	18.902	2732	2734	2738	rBV5	13556	12925	0.23%	0.021%
89	19.143	2771	2775	2776	rVB4	18719	18567	0.33%	0.030%
90	19.331	2804	2807	2817	rBV6	91750	144632	2.60%	0.235%
91	19.642	2853	2860	2871	rVB5	71820	189249	3.40%	0.307%
92	19.742	2872	2877	2886	rBV4	191236	272107	4.89%	0.442%
93	19.895	2900	2903	2909	rVB	39582	71877	1.29%	0.117%
94	20.006	2914	2922	2932	rBV	3525451	5559008	100.00%	9.021%
95	21.522	3174	3180	3191	rBV	497851	811392	14.60%	1.317%
96	21.939	3243	3251	3261	rVB	1994279	3517453	63.27%	5.708%
97	23.690	3543	3549	3557	rVB2	205547	448861	8.07%	0.728%
98	25.147	3785	3797	3810	rVB2	1748621	5283567	95.05%	8.574%
99	25.388	3826	3838	3852	rVB2	1100249	3504397	63.04%	5.687%
100	26.722	4062	4065	4075	rVB2	131122	312525	5.62%	0.507%

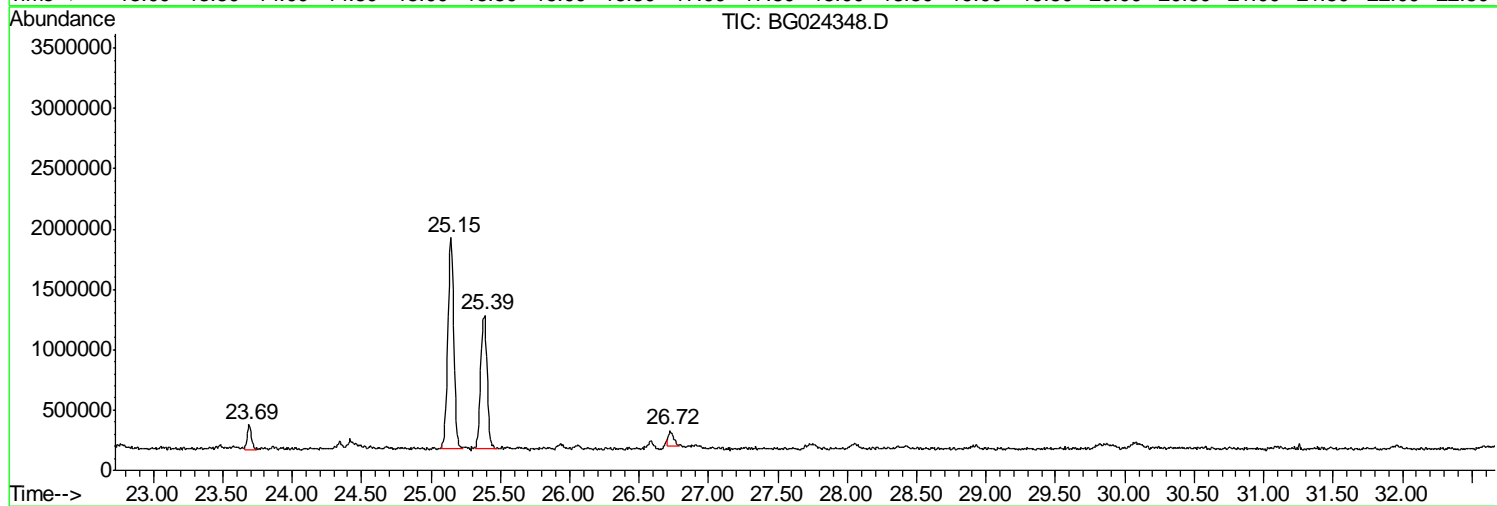
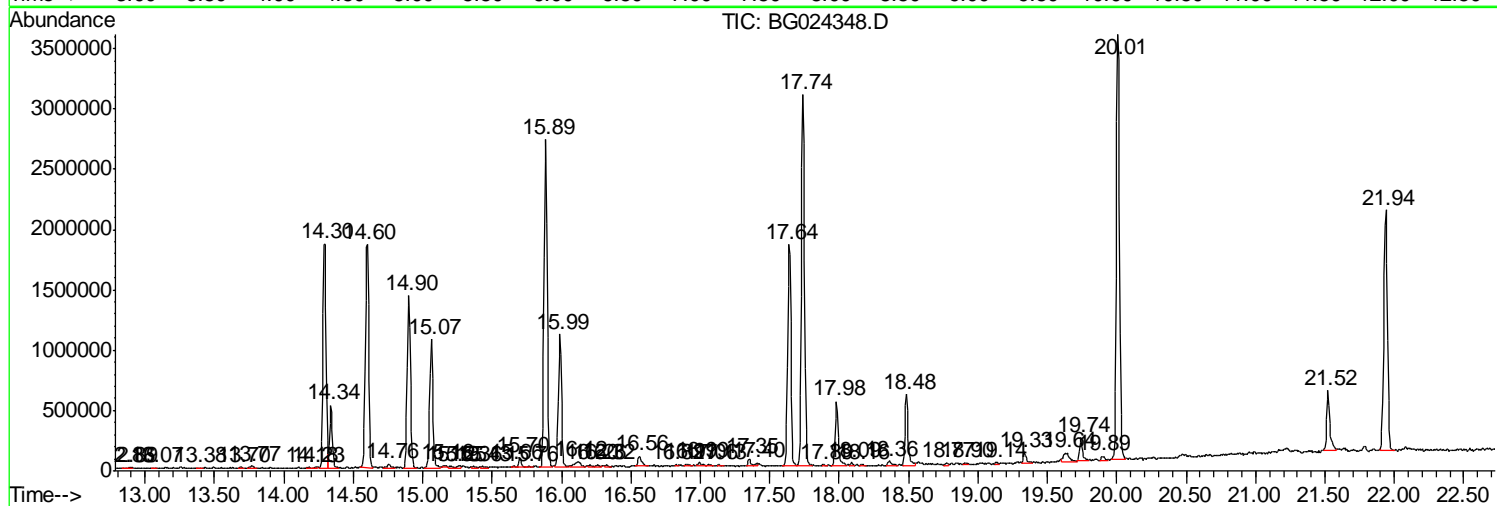
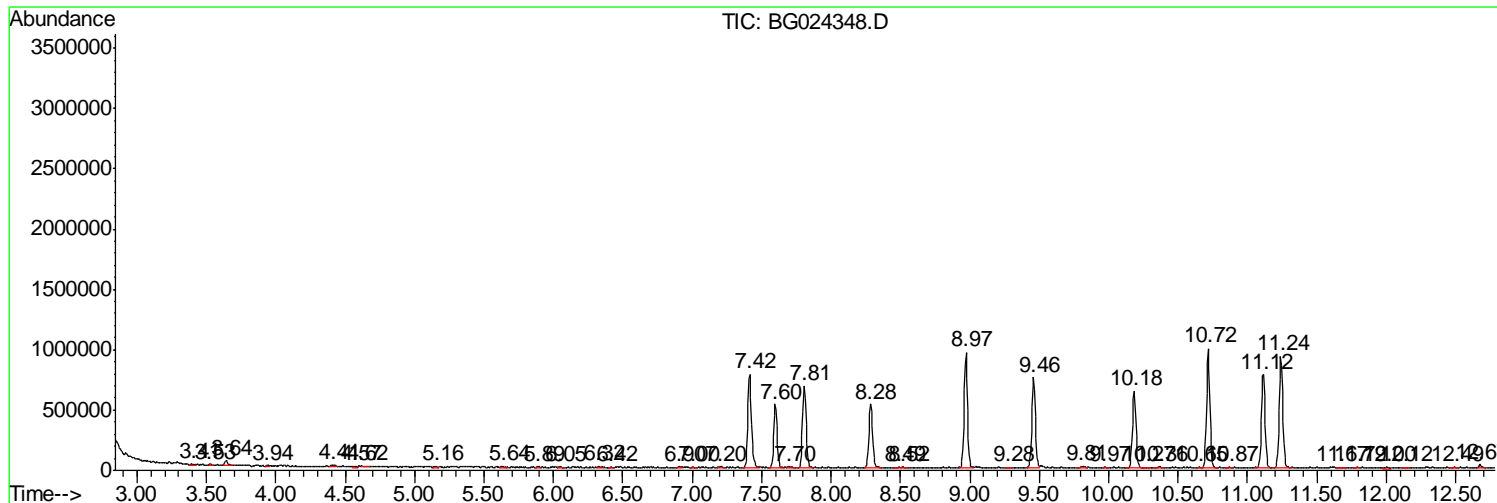
Sum of corrected areas: 61624440

Data Path : Z:\HPCHEM1\BNA G\DATA\BG101416\
 Data File : BG024348.D
 Acq On : 14 Oct 2016 12:04
 Operator : UM/SJ
 Sample : H5187-02
 Misc :
 ALS Vial : 5 Sample Multiplier: 1

Instrument :
 BNA_G
 ClientSampleId :
 BDPC3

Quant Method : Z:\HPCHEM1\BNA G\METHODS\SOM02.2-EPA-BG0100716.M
 Quant Title : SVOA CALIBRATION

TIC Library : C:\DATABASE\NIST11.L
 TIC Integration Parameters: LSCINT.P



Data Path : Z:\HPCHEM1\BNA G\DATA\BG101416\
 Data File : BG024348.D
 Acq On : 14 Oct 2016 12:04
 Operator : UM/SJ
 Sample : H5187-02
 Misc :
 ALS Vial : 5 Sample Multiplier: 1

Instrument :
 BNA_G
 ClientSampleID :
 BDPC3

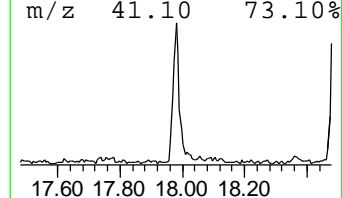
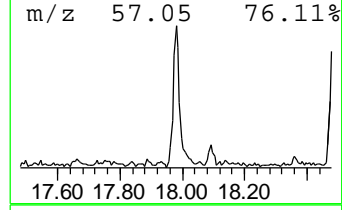
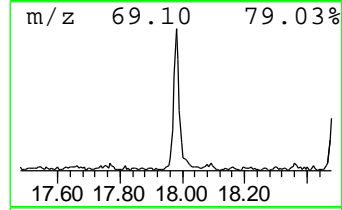
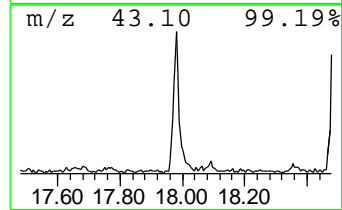
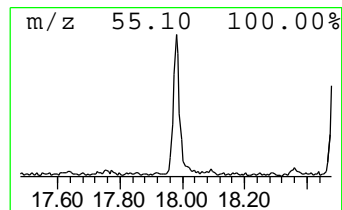
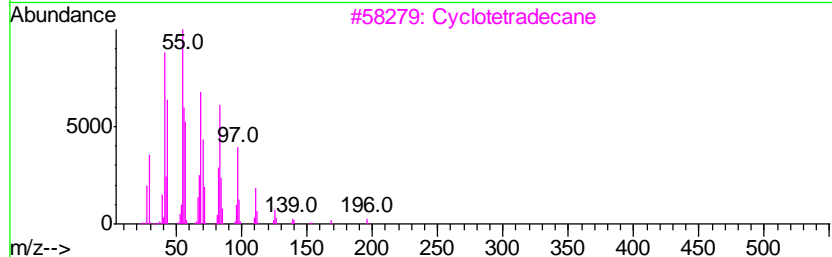
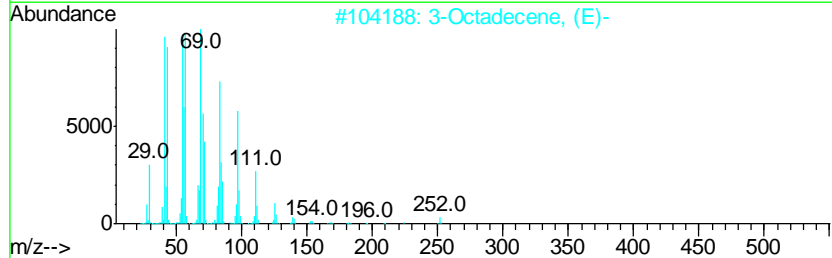
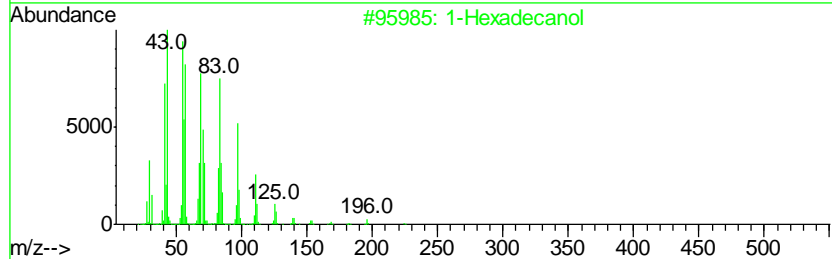
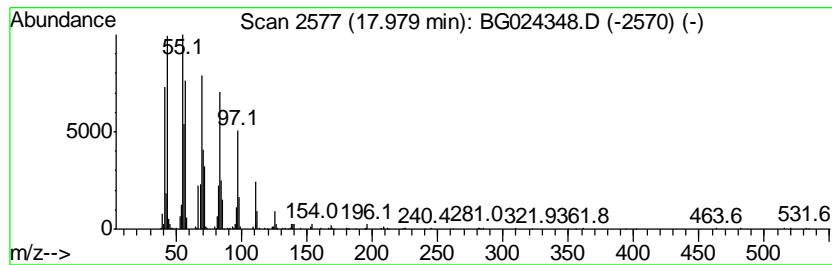
Quant Method : Z:\HPCHEM1\BNA G\METHODS\SOM02.2-EPA-BG0100716.M
 Quant Title : SVOA CALIBRATION

TIC Library : C:\DATABASE\NIST11.L
 TIC Integration Parameters: LSCINT.P

 Peak Number 1 1-Hexadecanol Concentration Rank 2

R.T.	EstConc	Area	Relative to ISTD	R.T.
17.98	5.43 ng/ul	810857	Phenanthrene-d10	17.64

Hit#	of	Tentative ID	MW	MolForm	CAS#	Qual
1	5	1-Hexadecanol	242	C16H34O	036653-82-4	95
2		3-Octadecene, (E)-	252	C18H36	007206-19-1	94
3		Cyclotetradecane	196	C14H28	000295-17-0	92
4		Bromoacetic acid, pentadecyl ester	348	C17H33BrO2	131143-01-6	91
5		7-Heptadecene, 1-chloro-	272	C17H33Cl	056554-78-0	91



Data Path : Z:\HPCHEM1\BNA G\DATA\BG101416\
 Data File : BG024348.D
 Acq On : 14 Oct 2016 12:04
 Operator : UM/SJ
 Sample : H5187-02
 Misc :
 ALS Vial : 5 Sample Multiplier: 1

Instrument :
 BNA_G
 ClientSampleID :
 BDPC3

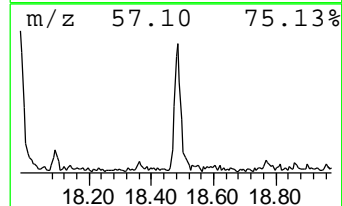
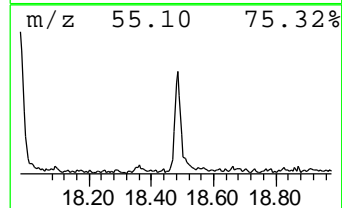
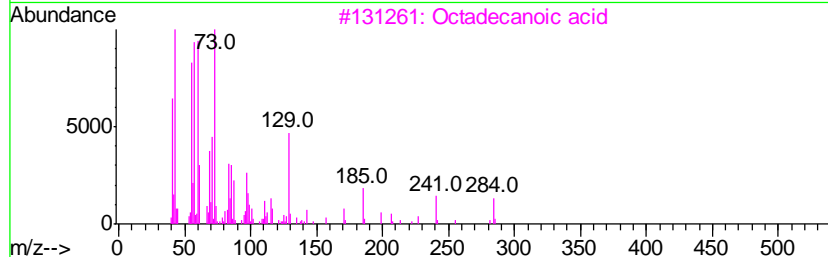
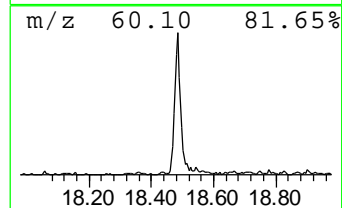
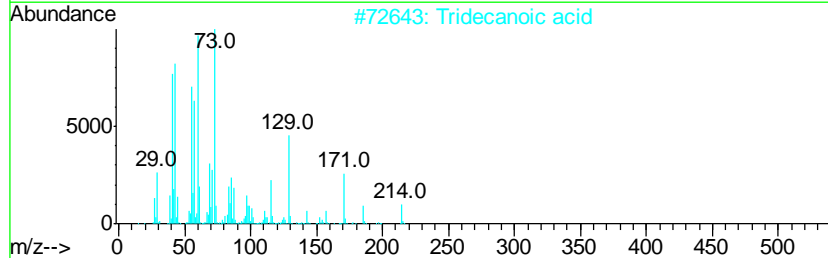
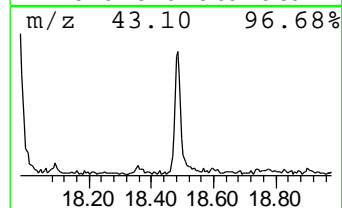
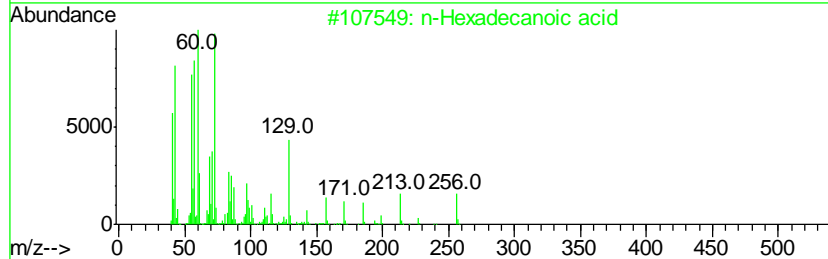
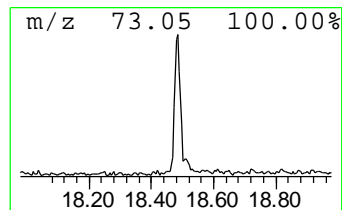
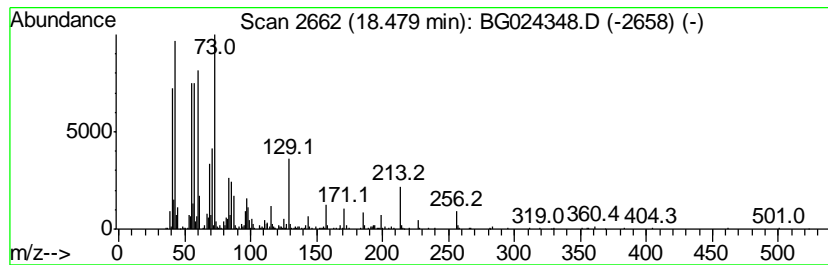
Quant Method : Z:\HPCHEM1\BNA G\METHODS\SOM02.2-EPA-BG0100716.M
 Quant Title : SVOA CALIBRATION

TIC Library : C:\DATABASE\NIST11.L
 TIC Integration Parameters: LSCINT.P

 Peak Number 2 n-Hexadecanoic acid Concentration Rank 1

R.T.	EstConc	Area	Relative to ISTD	R.T.
18.48	5.77 ng/ul	862398	Phenanthrene-d10	17.64

Hit#	of	Tentative ID	MW	MolForm	CAS#	Qual
1	5	n-Hexadecanoic acid	256	C16H32O2	000057-10-3	99
2		Tridecanoic acid	214	C13H26O2	000638-53-9	92
3		Octadecanoic acid	284	C18H36O2	000057-11-4	87
4		n-Hexadecanoic acid	256	C16H32O2	000057-10-3	81
5		Tetradecanoic acid	228	C14H28O2	000544-63-8	72



Data Path : Z:\HPCHEM1\BNA G\DATA\BG101416\
 Data File : BG024348.D
 Acq On : 14 Oct 2016 12:04
 Operator : UM/SJ
 Sample : H5187-02
 Misc :
 ALS Vial : 5 Sample Multiplier: 1

Instrument :
 BNA_G
 ClientSampleID :
 BDPC3

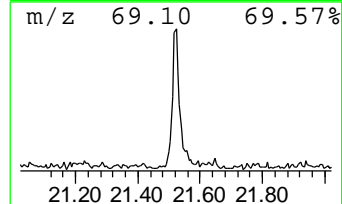
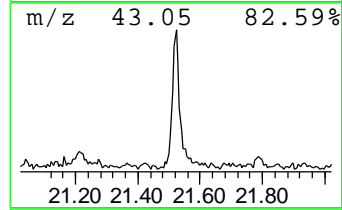
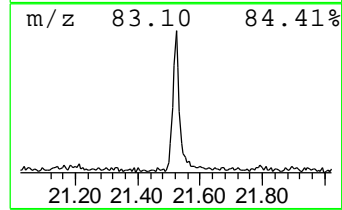
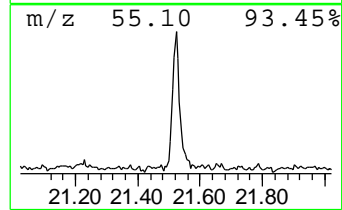
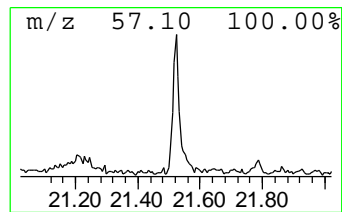
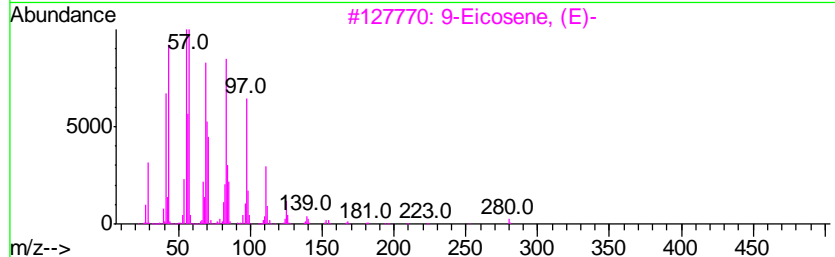
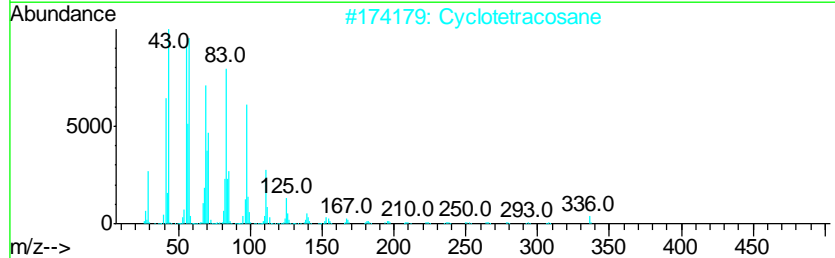
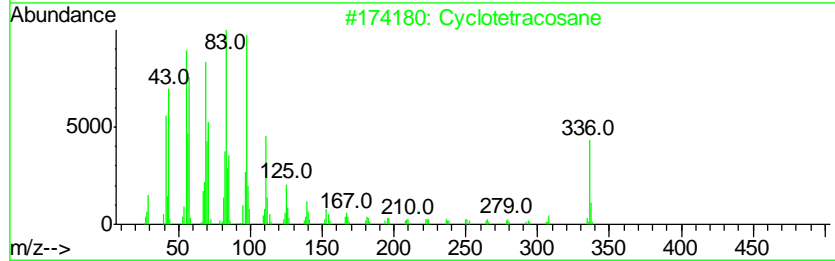
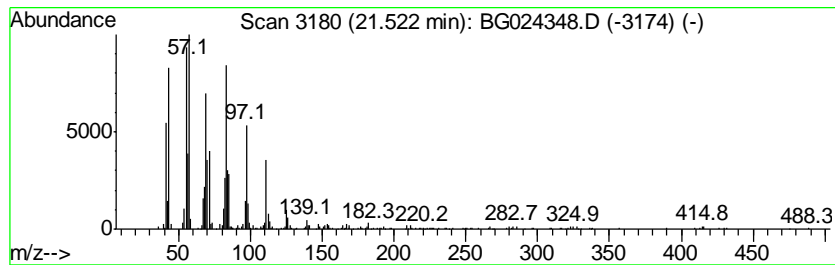
Quant Method : Z:\HPCHEM1\BNA G\METHODS\SOM02.2-EPA-BG0100716.M
 Quant Title : SVOA CALIBRATION

TIC Library : C:\DATABASE\NIST11.L
 TIC Integration Parameters: LSCINT.P

 Peak Number 3 (DEL) Alkane: Cyclic21.52 Concentration Rank 3

R.T.	EstConc	Area	Relative to ISTD	R.T.
21.52	4.61 ng/ul	811392	Chrysene-d12	21.94

Hit#	of	Tentative ID	MW	MolForm	CAS#	Qual
1	5	Cyclotetracosane	336	C24H48	000297-03-0	95
2		Cyclotetracosane	336	C24H48	000297-03-0	91
3		9-Eicosene, (E)-	280	C20H40	074685-29-3	91
4		1-Tricosene	322	C23H46	018835-32-0	91
5		Bromoacetic acid, hexadecyl ester	362	C18H35BrO2	005454-48-8	87



Data Path : Z:\HPCHEM1\BNA G\DATA\BG101416\
 Data File : BG024348.D
 Acq On : 14 Oct 2016 12:04
 Operator : UM/SJ
 Sample : H5187-02
 Misc :
 ALS Vial : 5 Sample Multiplier: 1

Instrument :
 BNA_G
 ClientSampled :
 BDPC3

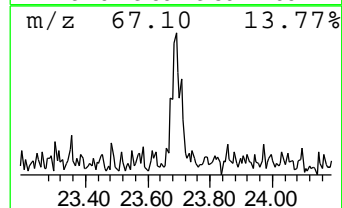
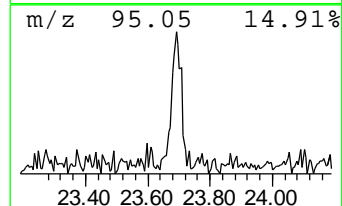
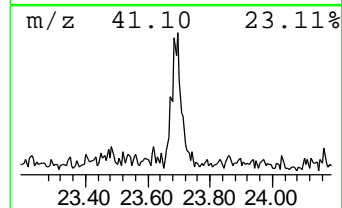
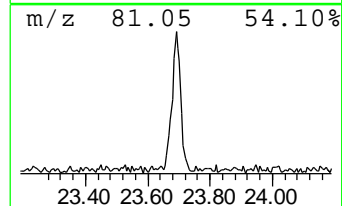
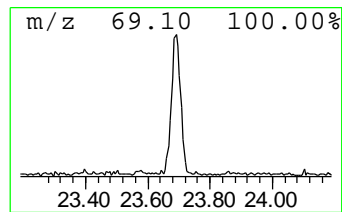
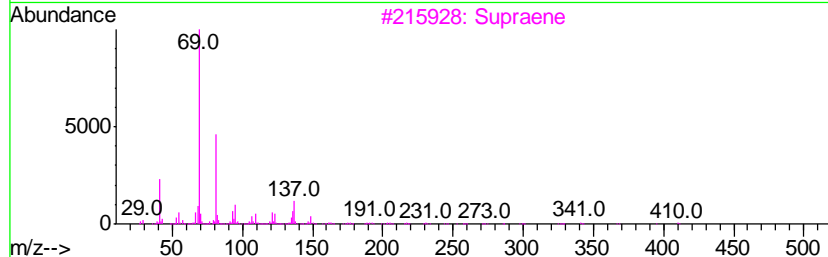
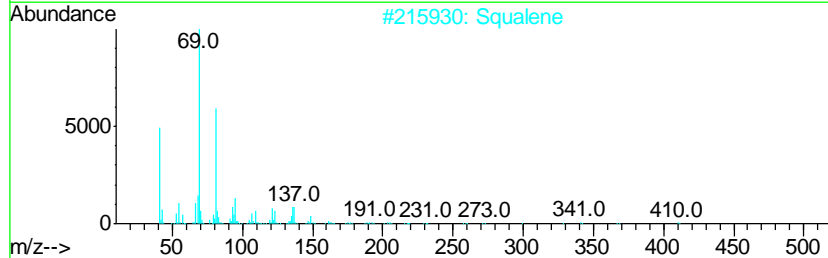
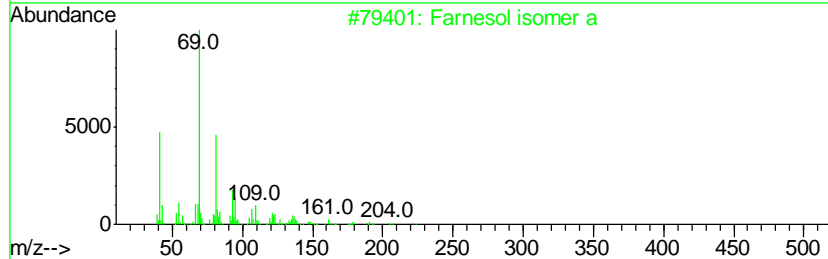
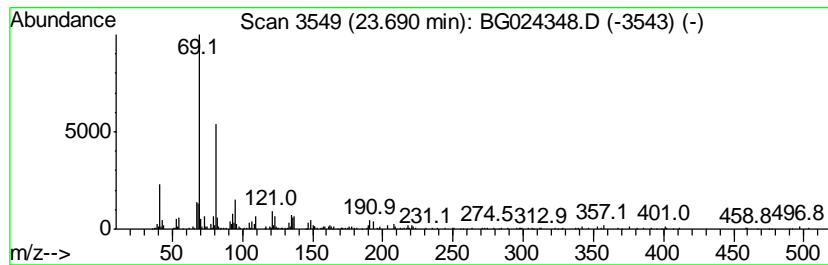
Quant Method : Z:\HPCHEM1\BNA G\METHODS\SOM02.2-EPA-BG0100716.M
 Quant Title : SVOA CALIBRATION

TIC Library : C:\DATABASE\NIST11.L
 TIC Integration Parameters: LSCINT.P

 Peak Number 4 Farnesol isomer a Concentration Rank 4

R.T.	EstConc	Area	Relative to ISTD	R.T.
23.69	2.56 ng/ul	448861	Perylene-d12	25.38

Hit#	of	Tentative ID	MW	MolForm	CAS#	Qual
1	5	Farnesol isomer a	222	C15H26O	1000108-92-4	87
2		Squalene	410	C30H50	000111-02-4	83
3		Supraene	410	C30H50	007683-64-9	80
4		2,6,10-Dodecatrien-1-ol, 3,7,11-...	222	C15H26O	004602-84-0	80
5		2-Methyl-3-(3-methyl-but-2-enyl)...	222	C15H26O	1000144-10-2	64



Data Path : Z:\HPCHEM1\BNA_G\DATA\BG101416\
Data File : BG024348.D
Acq On : 14 Oct 2016 12:04
Operator : UM/SJ
Sample : H5187-02
Misc :
ALS Vial : 5 Sample Multiplier: 1

Instrument :
BNA_G
ClientSampleId :
BDPC3

Quant Method : Z:\HPCHEM1\BNA_G\METHODS\SOM02.2-EPA-BG0100716.M
Quant Title : SVOA CALIBRATION

TIC Library : C:\DATABASE\NIST11.L
TIC Integration Parameters: LSCINT.P

TIC Top Hit name	RT	EstConc	Units	Response	--Internal Standard--			
					#	RT	Resp	Conc
1-Hexadecanol	17.98	5.4	ng/ul	810857	4	17.64	2987690	20.0
n-Hexadecanoic acid	18.48	5.8	ng/ul	862398	4	17.64	2987690	20.0
(DEL) Alkane: Cyc...	21.52	4.6	ng/ul	811392	5	21.94	3517450	20.0
Farnesol isomer a	23.69	2.6	ng/ul	448861	6	25.38	3504400	20.0