

Data Path : Z:\HPCHEM1\BNA_G\DATA\BG101417\
 Data File : BG029224.D
 Acq On : 14 Oct 2017 12:48
 Operator : SJ/JU
 Sample : I5574-18
 Misc :
 ALS Vial : 34 Sample Multiplier: 1

Instrument :
 BNA_G
 ClientSampled :
 B0C25

Manual Integrations
 APPROVED

Sohil
 10/15/2017 12:32:36 PM

Quant Time: Oct 15 00:39:46 2017
 Quant Method : Z:\HPCHEM1\BNA_G\METHODS\SOM-EPA-BG101417.M
 Quant Title : SVOA CALIBRATION
 QLast Update : Sat Oct 14 06:44:21 2017
 Response via : Initial Calibration

Internal Standards	R.T.	QIon	Response	Conc	Units	Dev(Min)
1) 1,4-Dichlorobenzene-d4	8.17	152	133980	20.00	ng/ul	0.00
18) Naphthalene-d8	10.98	136	584750	20.00	ng/ul	0.00
35) Acenaphthene-d10	14.79	164	355263	20.00	ng/ul	0.00
61) Phenanthrene-d10	17.52	188	828009	20.00	ng/ul	0.00
75) Chrysene-d12	21.80	240	789685	20.00	ng/ul	0.00
83) Perylene-d12	25.10	264	779512	20.00	ng/ul	0.00

System Monitoring Compounds

3) 1,4-Dioxane-d8	3.55	96	12141	3.68	ng/uL	0.00
5) Phenol-d5	7.31	99	271291	21.10	ng/ul	0.00
7) Bis-(2-Chloroethyl)ether-d	7.48	67	175878	21.86	ng/ul	0.00
9) 2-Chlorophenol-d4	7.70	132	201951	22.26	ng/ul	0.00
13) 4-Methylphenol-d8	8.86	113	210988	20.31	ng/ul	0.00
19) Nitrobenzene-d5	9.33	128	105357	25.10	ng/ul	0.00
22) 2-Nitrophenol-d4	10.06	143	112123	26.07	ng/ul	0.00
26) 2,4-Dichlorophenol-d3	10.60	165	203725	20.79	ng/ul	0.00
29) 4-Chloroaniline-d4	11.11	131	238861	20.98	ng/ul	0.00
43) Dimethylphthalate-d6	14.19	166	708088	23.31	ng/ul	0.00
46) Acenaphthylene-d8	14.48	160	853606	23.11	ng/ul	0.00
51) 4-Nitrophenol-d4	14.96	143	115056	20.52	ng/ul	0.00
57) Fluorene-d10	15.77	176	617351	24.82	ng/ul	0.00
62) 4,6-Dinitro-2-methylphenol	15.88	200	81822	20.24	ng/ul	0.00
70) Anthracene-d10	17.62	188	919793	23.49	ng/ul	0.00
76) Pyrene-d10	19.90	212	944714	23.11	ng/ul	0.00
87) Benzo(a)pyrene-d12	24.88	264	841203	22.78	ng/ul	0.01

Target Compounds

					Qvalue	
6) Phenol	7.34	94	52260	3.93	ng/ul#	87
44) Dimethylphthalate	14.23	163	215336	7.27	ng/ul	99
69) Phenanthrene	17.57	178	102375	2.29	ng/ul	99
74) Fluoranthene	19.56	202	107642	2.15	ng/ul#	91
77) Pyrene	19.92	202	175878	3.32	ng/ul#	91
80) Benzo(a)anthracene	21.78	228	60745m	1.23	ng/ul	
82) Chrysene	21.84	228	92213	2.05	ng/ul	97
85) Benzo(b)fluoranthene	24.05	252	64469	1.38	ng/ul#	94
88) Benzo(a)pyrene	24.94	252	50346	1.11	ng/ul#	89

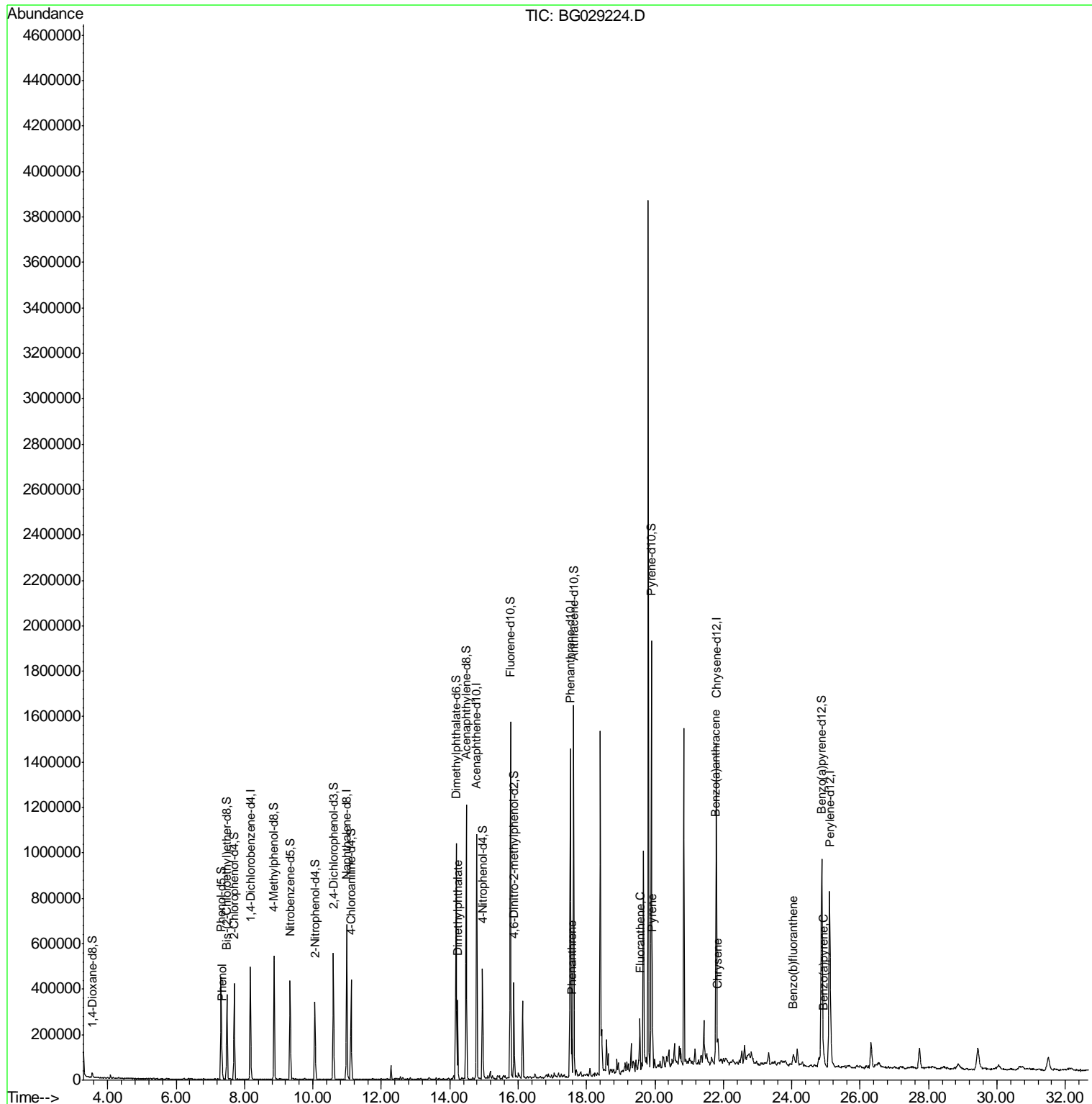
(#) = qualifier out of range (m) = manual integration (+) = signals summed

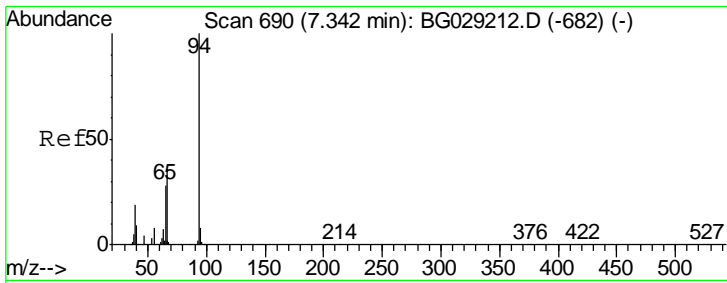
Data Path : Z:\HPCHEM1\BNA_G\DATA\BG101417\
 Data File : BG029224.D
 Acq On : 14 Oct 2017 12:48
 Operator : SJ/JU
 Sample : I5574-18
 Misc :
 ALS Vial : 34 Sample Multiplier: 1

Instrument :
 BNA_G
 ClientSampled :
 B0C25

Manual Integrations
 APPROVED
 Sohil
 10/15/2017 12:32:36 PM

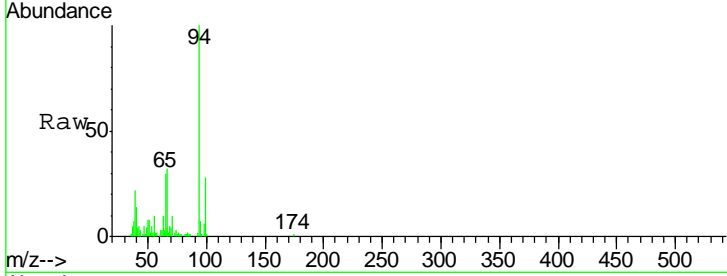
Quant Time: Oct 15 00:39:46 2017
 Quant Method : Z:\HPCHEM1\BNA_G\METHODS\SOM-EPA-BG101417.M
 Quant Title : SVOA CALIBRATION
 QLast Update : Sat Oct 14 06:44:21 2017
 Response via : Initial Calibration





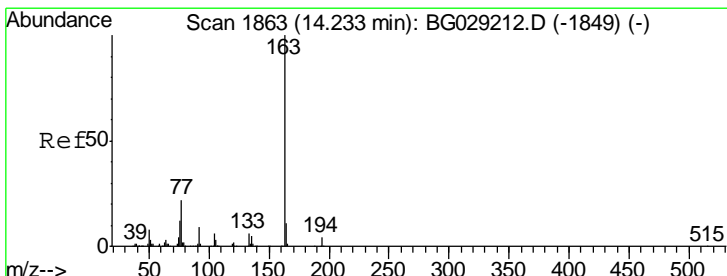
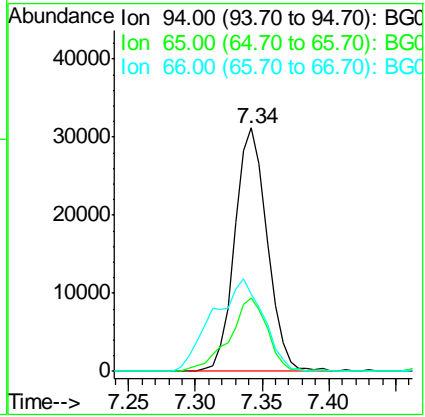
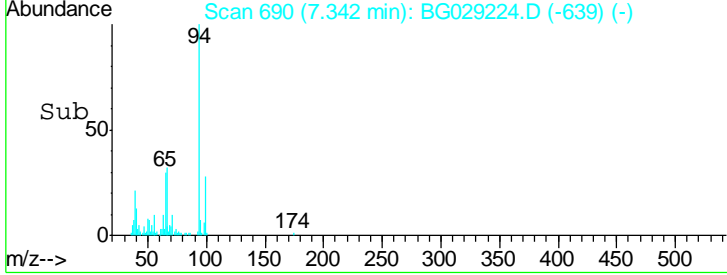
#6
 Phenol
 Concen: 3.93 ng/ul
 RT: 7.34 min Scan# 690
 Delta R.T. 0.00 min
 Lab File: BG029224.D
 Acq: 14 Oct 2017 12:48

Instrument :
 BNA_G
 ClientSampled :
 B0C25

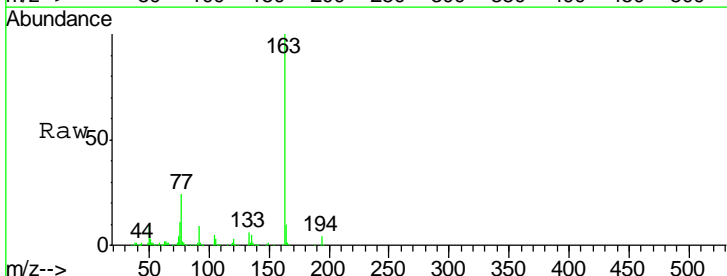


Tgt Ion	Resp	Lower	Upper
94	52260		
65	29.9	27.1	40.7
66	32.0	34.6	52.0#

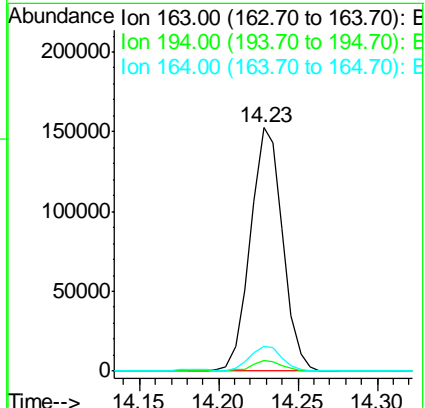
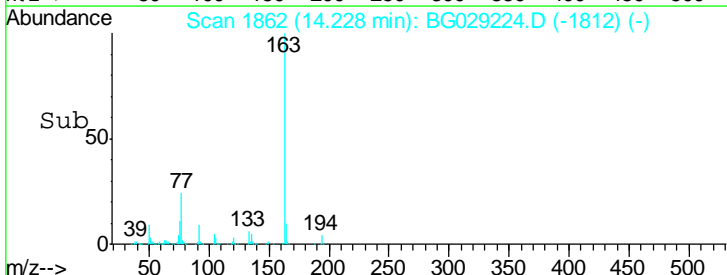
Manual Integrations
APPROVED
 Sohil
 10/15/2017 12:32:36 PM

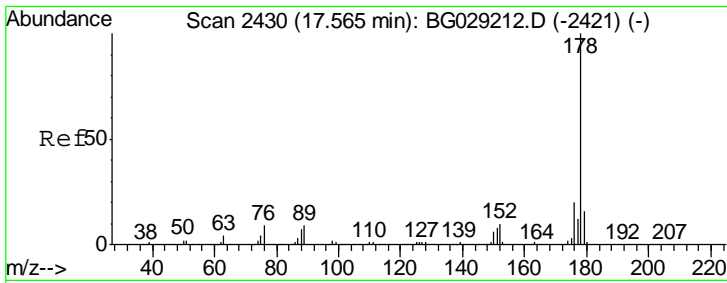


#44
 Dimethylphthalate
 Concen: 7.27 ng/ul
 RT: 14.23 min Scan# 1862
 Delta R.T. -0.01 min
 Lab File: BG029224.D
 Acq: 14 Oct 2017 12:48



Tgt Ion	Resp	Lower	Upper
163	215336		
194	4.3	3.5	5.3
164	10.1	7.6	11.4





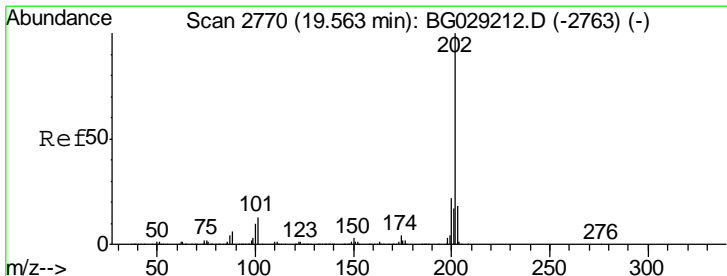
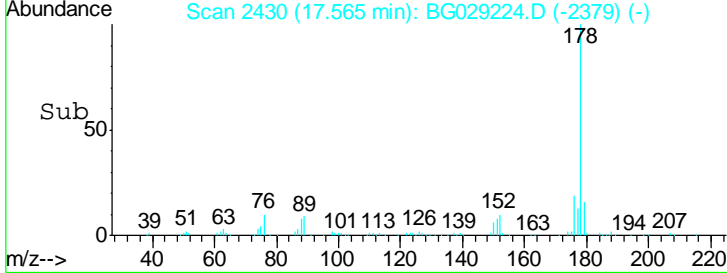
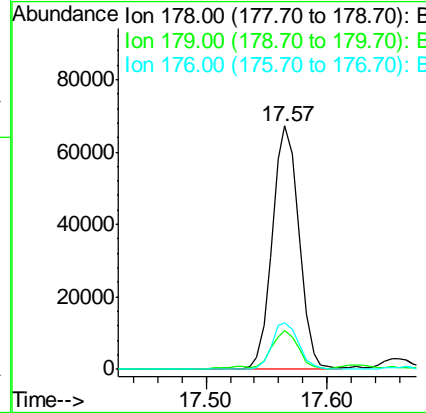
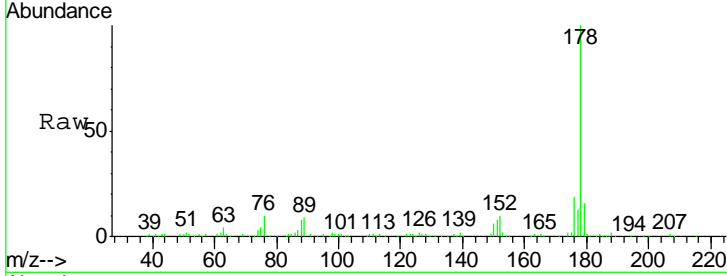
#69
 Phenanthrene
 Concen: 2.29 ng/ul
 RT: 17.57 min Scan# 2430
 Delta R.T. 0.00 min
 Lab File: BG029224.D
 Acq: 14 Oct 2017 12:48

Instrument :
 BNA_G
 ClientSampled :
 B0C25

Tgt Ion	Resp	Lower	Upper
178	102375		
179	16.0	13.0	19.6
176	18.9	15.3	22.9

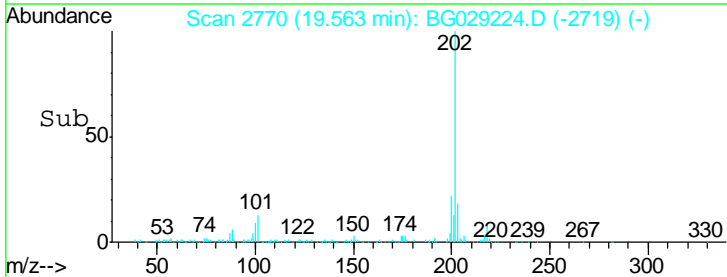
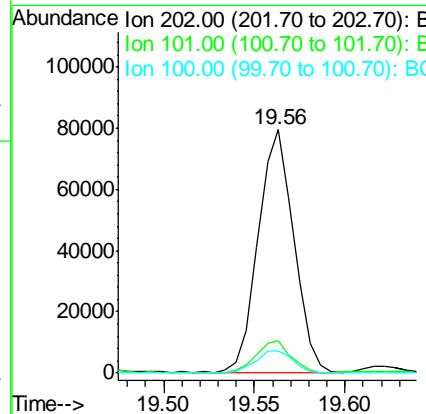
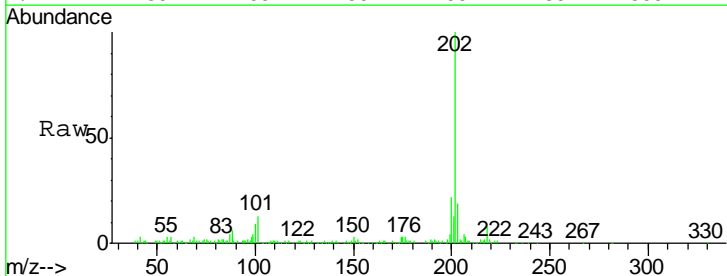
Manual Integrations
 APPROVED

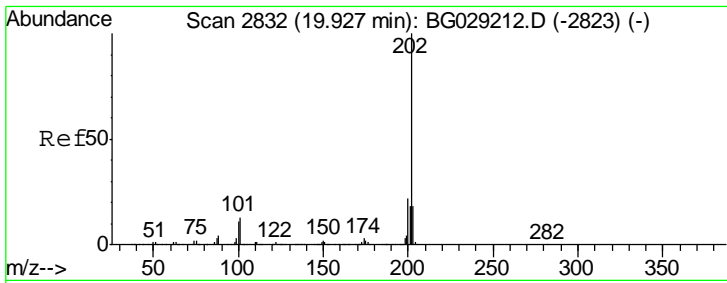
Sohil
 10/15/2017 12:32:36 PM



#74
 Fluoranthene
 Concen: 2.15 ng/ul
 RT: 19.56 min Scan# 2770
 Delta R.T. 0.00 min
 Lab File: BG029224.D
 Acq: 14 Oct 2017 12:48

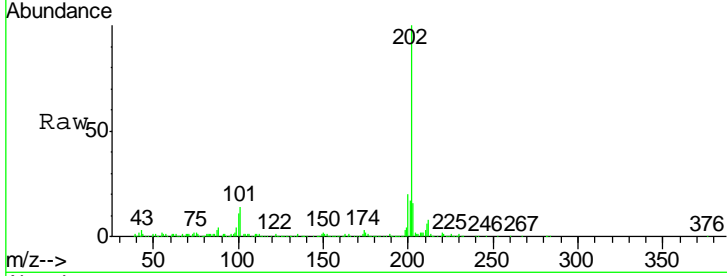
Tgt Ion	Resp	Lower	Upper
202	107642		
101	13.1	7.4	11.2#
100	9.1	5.6	8.4#





#77
 Pyrene
 Concen: 3.32 ng/ul
 RT: 19.92 min Scan# 2831
 Delta R.T. -0.01 min
 Lab File: BG029224.D
 Acq: 14 Oct 2017 12:48

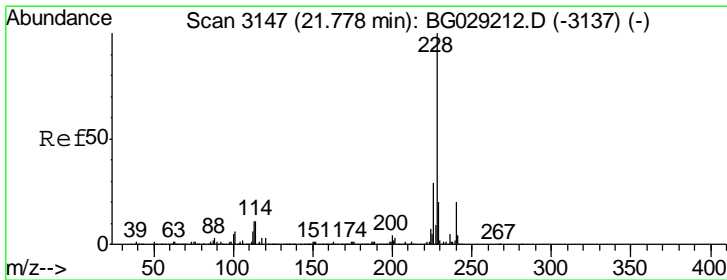
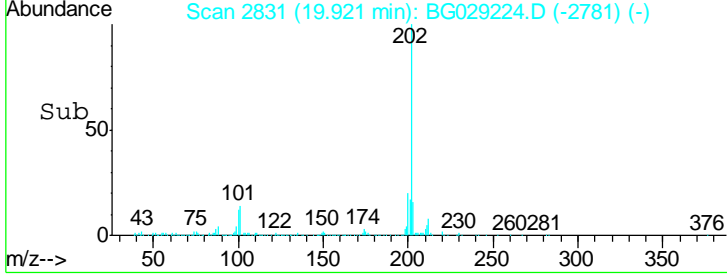
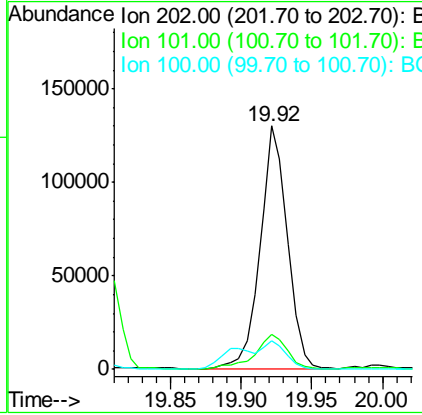
Instrument : BNA_G
 ClientSampled : B0C25



Tgt Ion:	202	Resp:	175878
Ion Ratio	100	Lower	Upper
202	100		
101	14.2	8.4	12.6#
100	11.5	7.0	10.6#

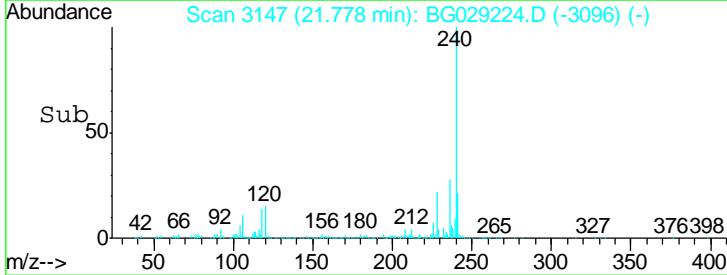
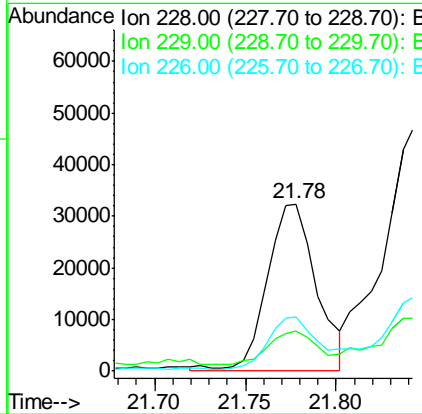
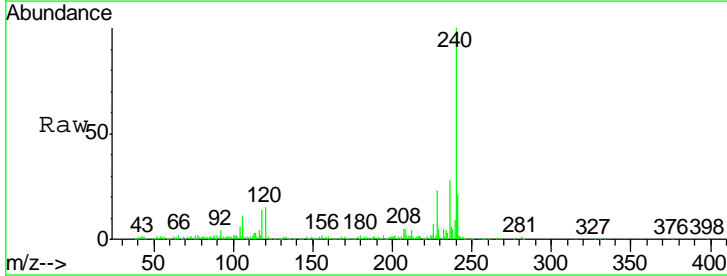
Manual Integrations APPROVED

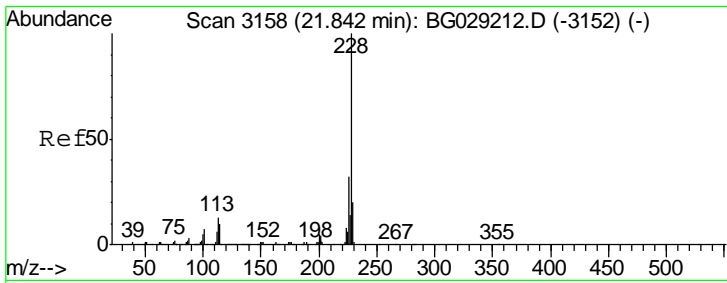
Sohil
 10/15/2017 12:32:36 PM



#80
 Benzo(a)anthracene
 Concen: 1.23 ng/ul m
 RT: 21.78 min Scan# 3147
 Delta R.T. 0.00 min
 Lab File: BG029224.D
 Acq: 14 Oct 2017 12:48

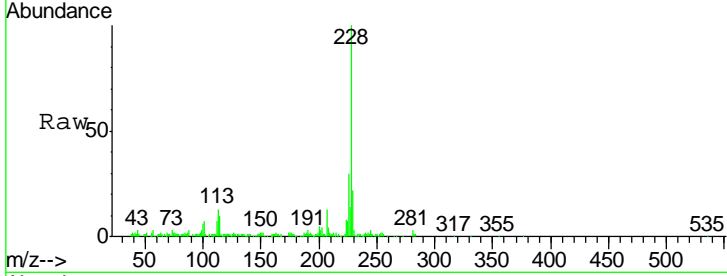
Tgt Ion:	228	Resp:	60745
Ion Ratio	100	Lower	Upper
228	100		
229	24.4	16.2	24.4#
226	32.5	22.2	33.2





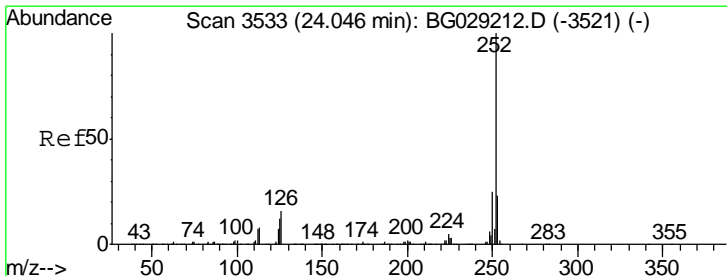
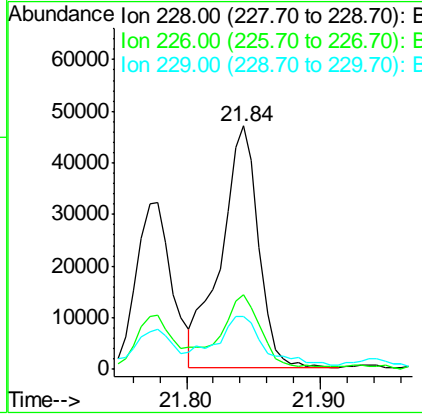
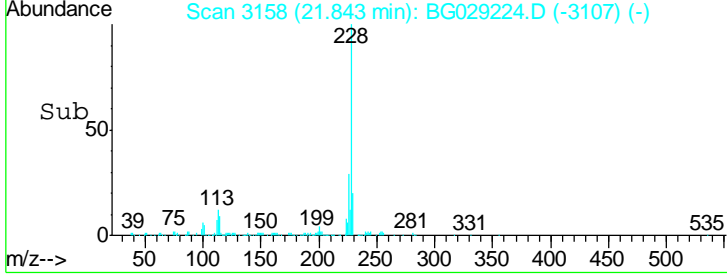
#82
 Chrysene
 Concen: 2.05 ng/ul
 RT: 21.84 min Scan# 3158
 Delta R.T. 0.00 min
 Lab File: BG029224.D
 Acq: 14 Oct 2017 12:48

Instrument :
 BNA_G
 ClientSampled :
 B0C25

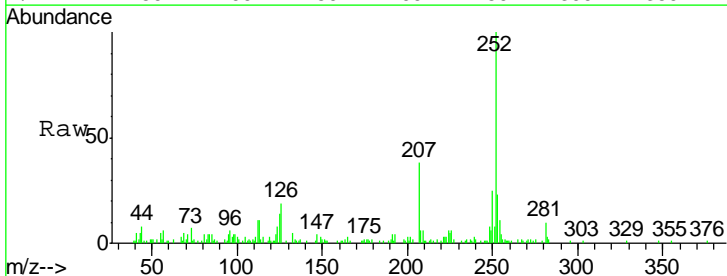


Tgt Ion	Resp	Lower	Upper
228	100		
226	30.4	24.2	36.2
229	21.9	15.2	22.8

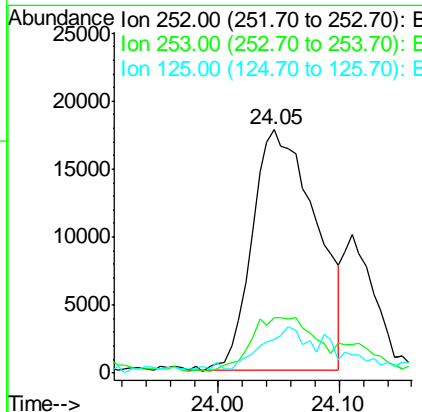
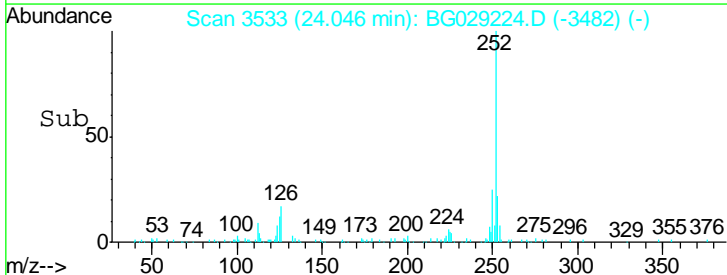
Manual Integrations
APPROVED
 Sohil
 10/15/2017 12:32:36 PM

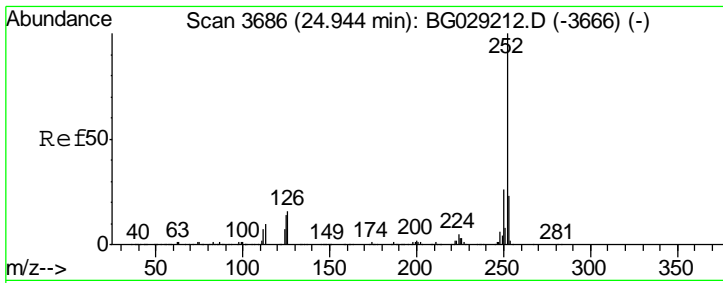


#85
 Benzo(b)fluoranthene
 Concen: 1.38 ng/ul
 RT: 24.05 min Scan# 3533
 Delta R.T. 0.00 min
 Lab File: BG029224.D
 Acq: 14 Oct 2017 12:48



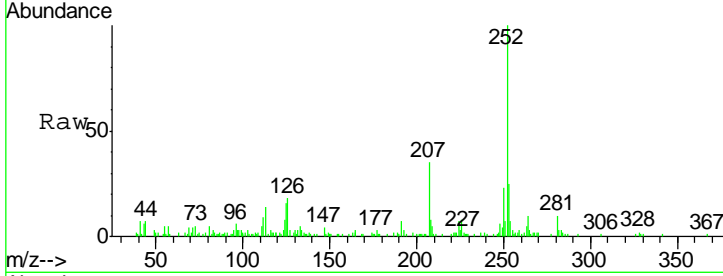
Tgt Ion	Resp	Lower	Upper
252	100		
253	22.8	17.0	25.4
125	13.9	7.5	11.3#





#88
 Benzo(a)pyrene
 Concen: 1.11 ng/ul
 RT: 24.94 min Scan# 3685
 Delta R.T. -0.01 min
 Lab File: BG029224.D
 Acq: 14 Oct 2017 12:48

Instrument :
 BNA_G
ClientSampled :
 B0C25



Tgt Ion: 252 Resp: 50346

Ion	Ratio	Lower	Upper
252	100		
253	25.4	17.1	25.7
125	16.0	7.8	11.8#

Manual Integrations
APPROVED
 Sohil
 10/15/2017 12:32:36 PM

