

Data Path : Z:\HPCHEM1\BNA_G\DATA\BG101417\
 Data File : BG029198.D
 Acq On : 13 Oct 2017 19:30
 Operator : SJ/JU
 Sample : PB103038BL
 Misc :
 ALS Vial : 9 Sample Multiplier: 1

Instrument :
 BNA_G
 ClientSampleId :
 SBLK38

Integration Parameters: LSCINT.P

Integrator: RTE
 Smoothing : ON
 Sampling : 1
 Start Thrs: 0.1
 Stop Thrs : 0

Filtering: 5
 Min Area: 0.1 % of largest Peak
 Max Peaks: 100
 Peak Location: TOP

If leading or trailing edge < 100 prefer < Baseline drop else tangent >
 Peak separation: 1

Method : Z:\HPCHEM1\BNA_G\METHODS\SOM-EPA-BG101417.M
 Title : SVOA CALIBRATION

Signal : TIC

peak #	R.T. min	first scan	max scan	last scan	PK TY	peak height	corr. area	corr. % max.	% of total
1	3.551	14	19	28	rVB	27222	45939	1.58%	0.161%
2	4.321	146	150	154	rVB3	3744	5939	0.20%	0.021%
3	4.926	247	253	257	rVB5	1684	3941	0.14%	0.014%
4	5.490	342	349	351	rVB3	2171	3843	0.13%	0.014%
5	6.372	491	499	503	rBV6	4221	8471	0.29%	0.030%
6	7.312	650	659	672	rBV	425165	727480	25.09%	2.557%
7	7.488	677	689	702	rBV	374820	614415	21.19%	2.160%
8	7.582	702	705	712	rVB6	2436	4358	0.15%	0.015%
9	7.700	717	725	738	rVB	414672	714939	24.66%	2.513%
10	8.170	795	805	815	rVV	283351	486771	16.79%	1.711%
11	8.869	916	924	943	rBV	529720	936687	32.31%	3.293%
12	9.333	992	1003	1013	rBV	407542	715074	24.66%	2.514%
13	10.061	1117	1127	1136	rBV	304821	553110	19.08%	1.944%
14	10.596	1210	1218	1236	rBV	496882	898344	30.98%	3.158%
15	10.990	1276	1285	1296	rVB	398306	715027	24.66%	2.514%
16	11.113	1296	1306	1322	rBV	551989	985427	33.99%	3.464%
17	12.559	1546	1552	1558	rVB2	9413	16220	0.56%	0.057%
18	13.769	1750	1758	1761	rBV3	2031	3813	0.13%	0.013%
19	14.186	1822	1829	1843	rVB	1052305	1505780	51.93%	5.293%
20	14.480	1868	1879	1890	rBV	1090485	1739001	59.98%	6.113%
21	14.785	1924	1931	1940	rVB3	630509	999099	34.46%	3.512%
22	14.962	1950	1961	1985	rBV	489537	789275	27.22%	2.775%
23	15.684	2079	2084	2090	rBV4	2097	4051	0.14%	0.014%
24	15.772	2090	2099	2109	rVV	1434929	2155736	74.35%	7.578%
25	15.878	2109	2117	2133	rVV	365806	556301	19.19%	1.956%
26	16.013	2133	2140	2149	rVB2	17906	27668	0.95%	0.097%
27	16.560	2225	2233	2235	rBV4	1860	3731	0.13%	0.013%
28	17.306	2356	2360	2366	rVB3	2754	5043	0.17%	0.018%
29	17.523	2388	2397	2405	rBV2	893706	1312140	45.25%	4.613%
30	17.623	2405	2414	2434	rVB	1640178	2459190	84.81%	8.645%
31	17.893	2455	2460	2462	rBV2	3677	4591	0.16%	0.016%
32	19.268	2692	2694	2700	rVB2	2308	4068	0.14%	0.014%
33	19.468	2722	2728	2731	rBV8	3252	5156	0.18%	0.018%
34	19.533	2732	2739	2744	rVB	16808	29679	1.02%	0.104%

Data Path : Z:\HPCHEM1\BNA_G\DATA\BG101417\
 Data File : BG029198.D
 Acq On : 13 Oct 2017 19:30
 Operator : SJ/JU
 Sample : PB103038BL
 Misc :
 ALS Vial : 9 Sample Multiplier: 1

Instrument :
 BNA_G
 ClientSampleId :
 SBLK38

Integration Parameters: LSCINT.P

Integrator: RTE
 Smoothing : ON
 Sampling : 1
 Start Thrs: 0.1
 Stop Thrs : 0

Filtering: 5
 Min Area: 0.1 % of largest Peak
 Max Peaks: 100
 Peak Location: TOP

If leading or trailing edge < 100 prefer < Baseline drop else tangent >
 Peak separation: 1

Method : Z:\HPCHEM1\BNA_G\METHODS\SOM-EPA-BG101417.M
 Title : SVOA CALIBRATION

35	19.650	2755	2759	2765	rVV6	2165	4739	0.16%	0.017%
36	19.779	2776	2781	2788	rBV2	16832	28076	0.97%	0.099%
37	19.897	2791	2801	2810	rBV	2012667	2899498	100.00%	10.193%
38	20.114	2835	2838	2841	rBV2	2927	4509	0.16%	0.016%
39	20.361	2874	2880	2886	rVB9	2789	6974	0.24%	0.025%
40	20.426	2886	2891	2893	rBV4	3124	5273	0.18%	0.019%
41	20.514	2902	2906	2909	rBV4	3220	4940	0.17%	0.017%
42	20.549	2911	2912	2915	rBV3	3539	4118	0.14%	0.014%
43	20.596	2915	2920	2922	rVV4	3974	6882	0.24%	0.024%
44	20.631	2924	2926	2934	rVB7	5900	9434	0.33%	0.033%
45	20.843	2959	2962	2966	rBV2	4709	6352	0.22%	0.022%
46	21.031	2989	2994	2995	rBV3	4967	6116	0.21%	0.022%
47	21.101	3002	3006	3008	rBV5	3234	4245	0.15%	0.015%
48	21.119	3008	3009	3014	rVB5	3376	4821	0.17%	0.017%
49	21.172	3014	3018	3020	rBV4	5035	6130	0.21%	0.022%
50	21.372	3048	3052	3054	rBV5	3361	4840	0.17%	0.017%
51	21.430	3058	3062	3064	rBV4	6339	6475	0.22%	0.023%
52	21.671	3101	3103	3107	rBV5	3889	4566	0.16%	0.016%
53	21.795	3115	3124	3142	rVB2	904601	1493048	51.49%	5.249%
54	21.989	3152	3157	3162	rVB7	9985	14546	0.50%	0.051%
55	22.347	3214	3218	3220	rBV5	3272	4806	0.17%	0.017%
56	22.611	3260	3263	3269	rBV6	9104	15106	0.52%	0.053%
57	22.976	3321	3325	3327	rBV5	3690	4940	0.17%	0.017%
58	23.035	3332	3335	3340	rBV6	3864	6948	0.24%	0.024%
59	23.334	3380	3386	3396	rVB6	16185	31965	1.10%	0.112%
60	23.452	3404	3406	3411	rBV5	4089	4281	0.15%	0.015%
61	23.675	3437	3444	3445	rBV6	4690	9749	0.34%	0.034%
62	23.951	3486	3491	3496	rVB9	9764	17805	0.61%	0.063%
63	24.163	3520	3527	3537	rBV4	20939	47846	1.65%	0.168%
64	24.304	3546	3551	3558	rVB10	12330	26532	0.92%	0.093%
65	24.879	3636	3649	3665	rBV2	959963	2729406	94.13%	9.595%
66	24.997	3666	3669	3671	rVB4	4172	3807	0.13%	0.013%
67	25.103	3675	3687	3705	rBV	500182	1490733	51.41%	5.241%
68	25.479	3750	3751	3755	rBV3	3596	3796	0.13%	0.013%
69	25.532	3756	3760	3764	rVB7	3919	5668	0.20%	0.020%
70	25.573	3764	3767	3769	rBV3	3382	5250	0.18%	0.018%
71	26.055	3848	3849	3856	rBV6	5246	7707	0.27%	0.027%

Data Path : Z:\HPCHEM1\BNA_G\DATA\BG101417\
 Data File : BG029198.D
 Acq On : 13 Oct 2017 19:30
 Operator : SJ/JU
 Sample : PB103038BL
 Misc :
 ALS Vial : 9 Sample Multiplier: 1

Instrument :
 BNA_G
 ClientSampleId :
 SBLK38

Integration Parameters: LSCINT.P

Integrator: RTE
 Smoothing : ON
 Sampling : 1
 Start Thrs: 0.1
 Stop Thrs : 0

Filtering: 5
 Min Area: 0.1 % of largest Peak
 Max Peaks: 100
 Peak Location: TOP

If leading or trailing edge < 100 prefer < Baseline drop else tangent >
 Peak separation: 1

Method : Z:\HPCHEM1\BNA_G\METHODS\SOM-EPA-BG101417.M
 Title : SVOA CALIBRATION

72	26.107	3856	3858	3862	rVB4	4440	5478	0.19%	0.019%
73	26.213	3875	3876	3883	rVB7	4628	5361	0.18%	0.019%
74	26.325	3884	3895	3905	rBV5	27672	88287	3.04%	0.310%
75	26.560	3927	3935	3939	rBV10	7702	17970	0.62%	0.063%
76	26.671	3947	3954	3956	rBV7	6194	12094	0.42%	0.043%
77	26.801	3972	3976	3979	rBV5	10707	17901	0.62%	0.063%
78	26.918	3991	3996	3997	rBV5	9857	15883	0.55%	0.056%
79	27.482	4088	4092	4095	rBV5	3854	5887	0.20%	0.021%
80	27.512	4095	4097	4100	rBV3	4696	3831	0.13%	0.013%
81	27.735	4125	4135	4145	rBV7	28072	100865	3.48%	0.355%
82	28.722	4300	4303	4306	rBV5	3502	4713	0.16%	0.017%
83	29.304	4398	4402	4404	rBV5	4792	6253	0.22%	0.022%
84	29.445	4416	4426	4438	rVB5	17682	81984	2.83%	0.288%
85	29.703	4465	4470	4473	rVB7	5251	7229	0.25%	0.025%
86	29.891	4500	4502	4507	rBV5	4200	5516	0.19%	0.019%
87	30.596	4620	4622	4627	rBV6	4491	5610	0.19%	0.020%
88	30.696	4638	4639	4645	rVB4	6585	12457	0.43%	0.044%
89	30.737	4645	4646	4649	rBV3	5434	5938	0.20%	0.021%
90	30.773	4649	4652	4654	rBV4	4231	5904	0.20%	0.021%
91	30.820	4659	4660	4663	rBV3	3719	3796	0.13%	0.013%
92	31.113	4709	4710	4715	rBV5	2876	3984	0.14%	0.014%
93	31.331	4744	4747	4750	rBV5	3567	5009	0.17%	0.018%
94	31.489	4767	4774	4775	rBV6	9452	12932	0.45%	0.045%
95	31.689	4806	4808	4814	rBV6	4644	6119	0.21%	0.022%
96	31.824	4830	4831	4834	rVB3	4999	4214	0.15%	0.015%
97	31.930	4846	4849	4852	rBV5	3262	4148	0.14%	0.015%
98	31.983	4856	4858	4861	rBV4	3164	5203	0.18%	0.018%
99	32.359	4917	4922	4923	rVB5	3264	4191	0.14%	0.015%
100	32.459	4936	4939	4942	rBV5	3992	4952	0.17%	0.017%

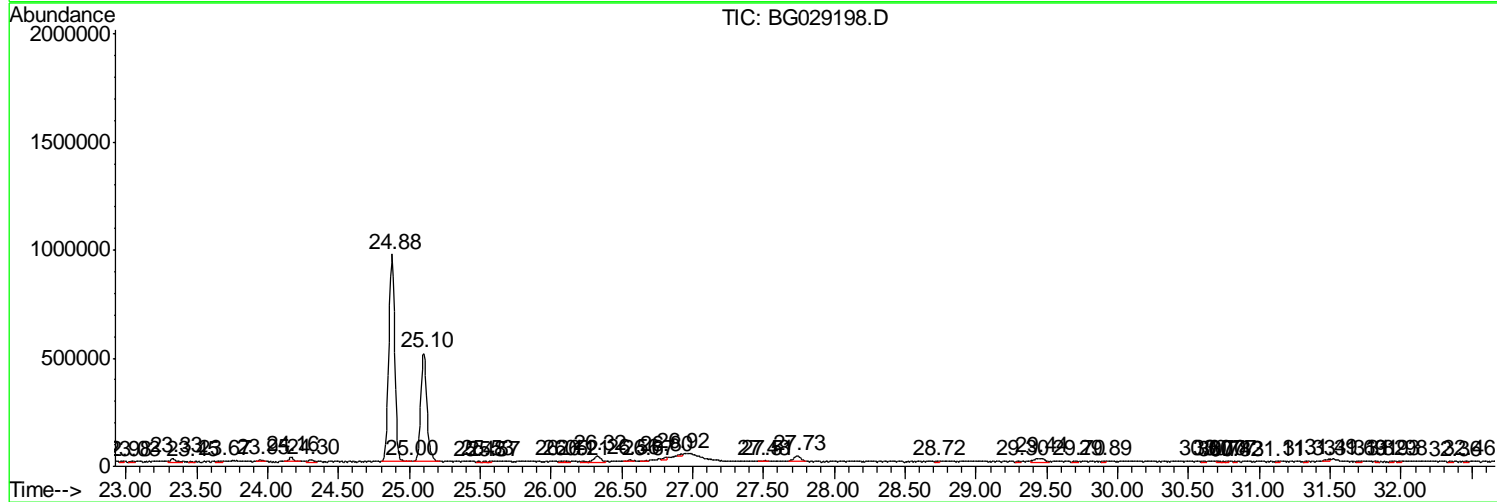
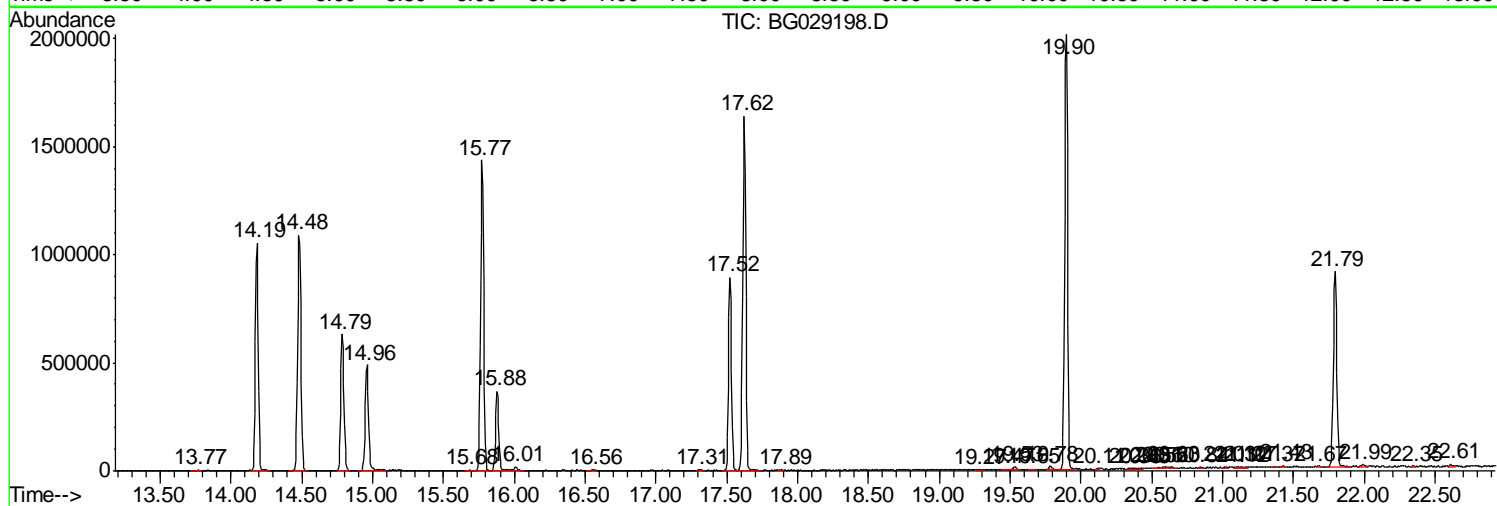
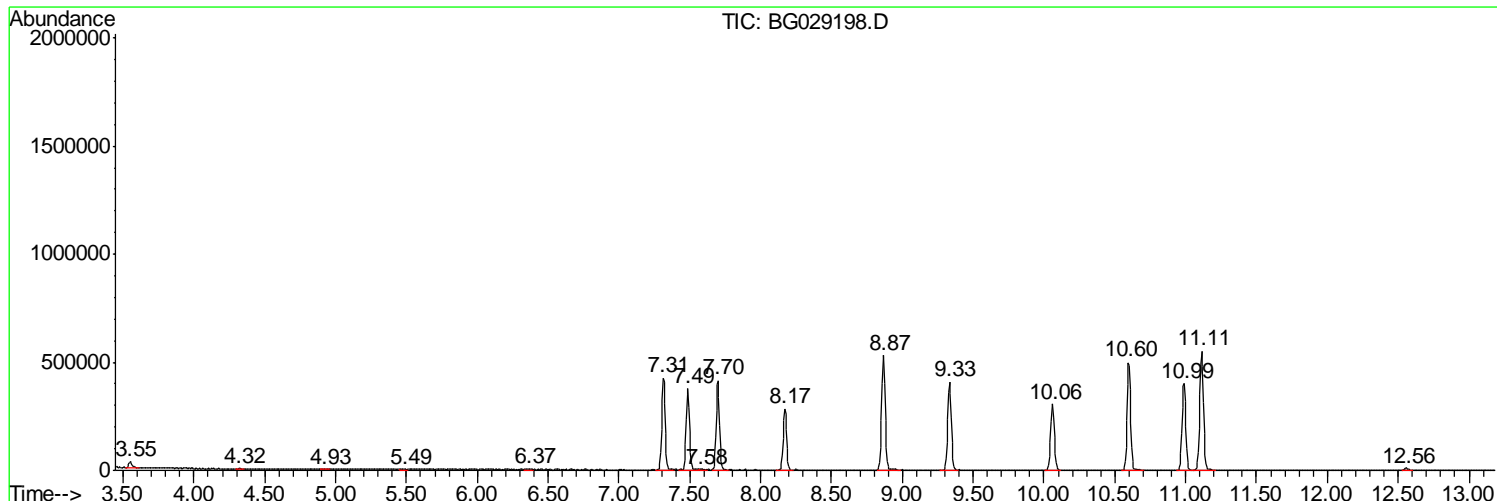
Sum of corrected areas: 28445943

Data Path : Z:\HPCHEM1\BNA_G\DATA\BG101417\
 Data File : BG029198.D
 Acq On : 13 Oct 2017 19:30
 Operator : SJ/JU
 Sample : PB103038BL
 Misc :
 ALS Vial : 9 Sample Multiplier: 1

Instrument :
 BNA_G
ClientSampleId :
 SBLK38

Quant Method : Z:\HPCHEM1\BNA_G\METHODS\SOM-EPA-BG101417.M
 Quant Title : SVOA CALIBRATION

TIC Library : C:\DATABASE\NIST11.L
 TIC Integration Parameters: LSCINT.P



DBaaaPathh::ZZ\NHEHEMM\BNAAG\DATA\BGC004417\
DBaaaFilee::BGC02998DD
AcqOn :130Oct2017 19300
Operator::SSJJU
Sample::PBB0008BBL
MISC::
AASVaal :99 SampleMultiplier:11

Instrument :
BNA_G
ClientSampled :
SBLK38

QuantMethdd::ZZ\NHEHEMM\BNAAG\METHODS\SOMEERABGC004417MM
QuantTitlee::SUOACALBRATION
TTCCLibrary :CC\DATA\BSE\NLSST1LL
TTCIntegrationParameters:LSCNTPP

TIC Top Hit name	RT	EstConc	Units	Response	--Internal Standard--			
					#	RT	Resp	Conc

No Library Search Compounds Detected
