

Data Path : Z:\HPCHEM1\BNA G\DATA\BG101515\
 Data File : BG019219.D
 Acq On : 15 Oct 2015 23:39
 Operator : UM/NP
 Sample : SSTDCCC020EC
 Misc :
 ALS Vial : 2 Sample Multiplier: 1

Instrument :
 BNA_G
 ClientSampleId :
 SSTD02011

Quant Time: Oct 16 04:10:15 2015
 Quant Method : Z:\HPCHEM1\BNA G\METHODS\SOM02.2-EPA-BG101515.M
 Quant Title : SVOA CALIBRATION
 QLast Update : Fri Oct 16 04:07:16 2015
 Response via : Initial Calibration

Internal Standards	R.T.	QIon	Response	Conc	Units	Dev(Min)
1) 1,4-Dichlorobenzene-d4	8.01	152	15347	20.00	ng/ul	0.00
18) Naphthalene-d8	10.81	136	69697	20.00	ng/ul	0.00
36) Acenaphthene-d10	14.64	164	51227	20.00	ng/ul	0.00
62) Phenanthrene-d10	17.39	188	132487	20.00	ng/ul	0.00
78) Chrysene-d12	21.65	240	171165	20.00	ng/ul	0.00
86) Perylene-d12	24.86	264	159839	20.00	ng/ul	0.00

System Monitoring Compounds

3) 1,4-Dioxane-d8	3.44	96	1934	7.02	ng/uL	0.00
5) Phenol-d5	7.17	99	26365	19.69	ng/ul	0.00
7) Bis-(2-Chloroethyl)ether-d	7.33	67	16896	19.60	ng/ul	0.00
9) 2-Chlorophenol-d4	7.54	132	20045	20.53	ng/ul	0.00
13) 4-Methylphenol-d8	8.71	113	23244	20.48	ng/ul	0.00
19) Nitrobenzene-d5	9.17	128	10793	20.10	ng/ul	0.00
22) 2-Nitrophenol-d4	9.89	143	12480	21.90	ng/ul	0.00
26) 2,4-Dichlorophenol-d3	10.44	165	24607	21.80	ng/ul	0.00
29) 4-Chloroaniline-d4	10.95	131	31355	21.57	ng/ul	0.00
44) Dimethylphthalate-d6	14.04	166	87906	19.62	ng/ul	0.00
47) Acenaphthylene-d8	14.33	160	97140	20.06	ng/ul	0.00
52) 4-Nitrophenol-d4	14.84	143	17824	22.13	ng/ul	0.00
58) Fluorene-d10	15.63	176	73543	19.21	ng/ul	0.00
63) 4,6-Dinitro-2-methylphenol	15.75	200	17221	21.07	ng/ul	0.00
71) Anthracene-d10	17.48	188	124584	19.90	ng/ul	0.00
79) Pyrene-d10	19.77	212	154190	19.86	ng/ul	0.00
90) Benzo(a)pyrene-d12	24.64	264	162821	20.16	ng/ul	0.00

Target Compounds

Target Compounds	R.T.	QIon	Response	Conc	Units	Ovalue
2) 1,4-Dioxane	3.48	88	2397	7.38	ng/uL#	88
4) Benzaldehyde	7.15	77	16361	21.02	ng/ul	94
6) Phenol	7.20	94	27913	20.01	ng/ul#	86
8) Bis(2-Chloroethyl)ether	7.42	93	19085	19.29	ng/ul	100
10) 2-Chlorophenol	7.57	128	20507	20.46	ng/ul	97
11) 2-Methylphenol	8.45	108	21892	20.00	ng/ul	97
12) 2,2'-oxybis(1-Chloropropan	8.54	45	42599	19.32	ng/ul#	97
14) Acetophenone	8.83	105	37151	19.40	ng/ul#	95
15) N-Nitroso-di-n-propylamine	8.81	70	20076	20.51	ng/ul	88
16) 4-Methylphenol	8.78	108	24484	19.93	ng/ul	97
17) Hexachloroethane	9.09	117	8429	19.53	ng/ul	94
20) Nitrobenzene	9.21	77	29317	19.91	ng/ul	98
21) Isophorone	9.73	82	57539	20.06	ng/ul#	97
23) 2-Nitrophenol	9.92	139	12779	21.10	ng/ul#	81
24) 2,4-Dimethylphenol	9.98	107	30853	21.03	ng/ul	90
25) Bis(2-Chloroethoxy)methane	10.21	93	28968	19.55	ng/ul	98
27) 2,4-Dichlorophenol	10.46	162	24431	21.43	ng/ul	95
28) Naphthalene	10.86	128	71198	19.54	ng/ul	97
30) 4-Chloroaniline	10.97	127	32119	21.44	ng/ul	93
31) Hexachlorobutadiene	11.15	225	16867	20.26	ng/ul	95
32) Caprolactam	11.73	113	7507	17.79	ng/ul#	75
33) 4-Chloro-3-methylphenol	12.10	107	30841	21.48	ng/ul	95
34) 2-Methylnaphthalene	12.47	142	58584	20.29	ng/ul	97

Data Path : Z:\HPCHEM1\BNA G\DATA\BG101515\
 Data File : BG019219.D
 Acq On : 15 Oct 2015 23:39
 Operator : UM/NP
 Sample : SSTDCCC020EC
 Misc :
 ALS Vial : 2 Sample Multiplier: 1

Instrument :
 BNA_G
 ClientSampleId :
 SSTD02011

Quant Time: Oct 16 04:10:15 2015
 Quant Method : Z:\HPCHEM1\BNA G\METHODS\SOM02.2-EPA-BG101515.M
 Quant Title : SVOA CALIBRATION
 QLast Update : Fri Oct 16 04:07:16 2015
 Response via : Initial Calibration

Internal Standards	R.T.	QIon	Response	Conc	Units	Dev(Min)
35) 1-Methylnaphthalene	12.69	142	56675	20.04	ng/ul	100
37) 1,2,4,5-Tetrachlorobenzene	12.83	216	32964	20.08	ng/ul#	91
38) Hexachlorocyclopentadiene	12.82	237	18542	18.99	ng/ul	92
39) 2,4,6-Trichlorophenol	13.07	196	21965	21.51	ng/ul	93
40) 2,4,5-Trichlorophenol	13.14	196	24849	22.12	ng/ul	92
41) 1,1'-Biphenyl	13.47	154	77779	19.45	ng/ul	94
42) 2-Chloronaphthalene	13.51	162	61814	19.99	ng/ul	95
43) 2-Nitroaniline	13.72	65	25846	21.36	ng/ul	91
45) Dimethylphthalate	14.09	163	88685	19.65	ng/ul	100
46) 2,6-Dinitrotoluene	14.21	165	17842	20.73	ng/ul#	84
48) Acenaphthylene	14.36	152	106169	19.88	ng/ul	99
49) 3-Nitroaniline	14.54	138	18041	21.87	ng/ul	96
50) Acenaphthene	14.70	153	70320	19.66	ng/ul	95
51) 2,4-Dinitrophenol	14.74	184	11985	24.33	ng/ul#	87
53) 4-Nitrophenol	14.85	109	20010	22.72	ng/ul#	73
54) Dibenzofuran	15.04	168	99557	19.70	ng/ul	91
55) 2,4-Dinitrotoluene	15.00	165	28036	20.08	ng/ul	90
56) 2,3,4,6-Tetrachlorophenol	15.27	232	23960	22.19	ng/ul	92
57) Diethylphthalate	15.45	149	90976	19.42	ng/ul	99
59) Fluorene	15.68	166	85958	19.87	ng/ul	96
60) 4-Chlorophenyl-phenylether	15.68	204	42347	18.98	ng/ul#	90
61) 4-Nitroaniline	15.71	138	21089	21.58	ng/ul#	76
64) 4,6-Dinitro-2-methylphenol	15.76	198	17871	21.65	ng/ul#	91
65) N-Nitrosodiphenylamine	15.89	169	73835	20.28	ng/ul	95
66) 4-Bromophenyl-phenylether	16.57	248	30345	20.25	ng/ul	92
67) Hexachlorobenzene	16.69	284	35455	20.43	ng/ul	98
68) Atrazine	16.84	200	36451	20.82	ng/ul	97
69) Pentachlorophenol	17.03	266	21010	23.55	ng/ul	93
70) Phenanthrene	17.43	178	144628	19.55	ng/ul	99
72) Anthracene	17.52	178	150441	20.02	ng/ul	98
73) 1,2,3,4-Tetrachlorobenzene	13.44	216	33165	20.54	ng/uL	98
74) Pentachlorobenzene	14.96	250	34464	19.49	ng/uL	93
75) Carbazole	17.79	167	137491	21.22	ng/ul	97
76) Di-n-butylphthalate	18.34	149	168137	19.71	ng/ul#	98
77) Fluoranthene	19.44	202	194639	21.02	ng/ul#	92
80) Pyrene	19.80	202	200552	19.74	ng/ul#	93
81) Butylbenzylphthalate	20.68	149	78862	21.35	ng/ul	96
82) 3,3'-Dichlorobenzidine	21.55	252	59057	18.89	ng/ul	99
83) Benzo(a)anthracene	21.63	228	192605	19.92	ng/ul	99
84) Bis(2-ethylhexyl)phthalate	21.54	149	105090	20.58	ng/ul	94
85) Chrysene	21.70	228	180108	19.70	ng/ul	99
87) Di-n-octyl phthalate	22.75	149	176099	20.70	ng/ul	100
88) Benzo(b)fluoranthene	23.84	252	182222	20.10	ng/ul#	95
89) Benzo(k)fluoranthene	23.90	252	182440	20.51	ng/ul#	96
91) Benzo(a)pyrene	24.70	252	178225	20.44	ng/ul#	94
92) Indeno(1,2,3-cd)pyrene	28.50	276	202328	19.55	ng/ul#	95
93) Dibenzo(a,h)anthracene	28.56	278	95552	10.59	ng/ul#	94
94) Benzo(a,h,i)perylene	29.64	276	147039	17.27	ng/ul#	92

Data Path : Z:\HPCHEM1\BNA G\DATA\BG101515\
 Data File : BG019219.D
 Acq On : 15 Oct 2015 23:39
 Operator : UM/NP
 Sample : SSTDCCC020EC
 Misc :
 ALS Vial : 2 Sample Multiplier: 1

Instrument :
 BNA_G
ClientSampleId :
 SSTD02011

Quant Time: Oct 16 04:10:15 2015
 Quant Method : Z:\HPCHEM1\BNA G\METHODS\SOM02.2-EPA-BG101515.M
 Quant Title : SVOA CALIBRATION
 QLast Update : Fri Oct 16 04:07:16 2015
 Response via : Initial Calibration

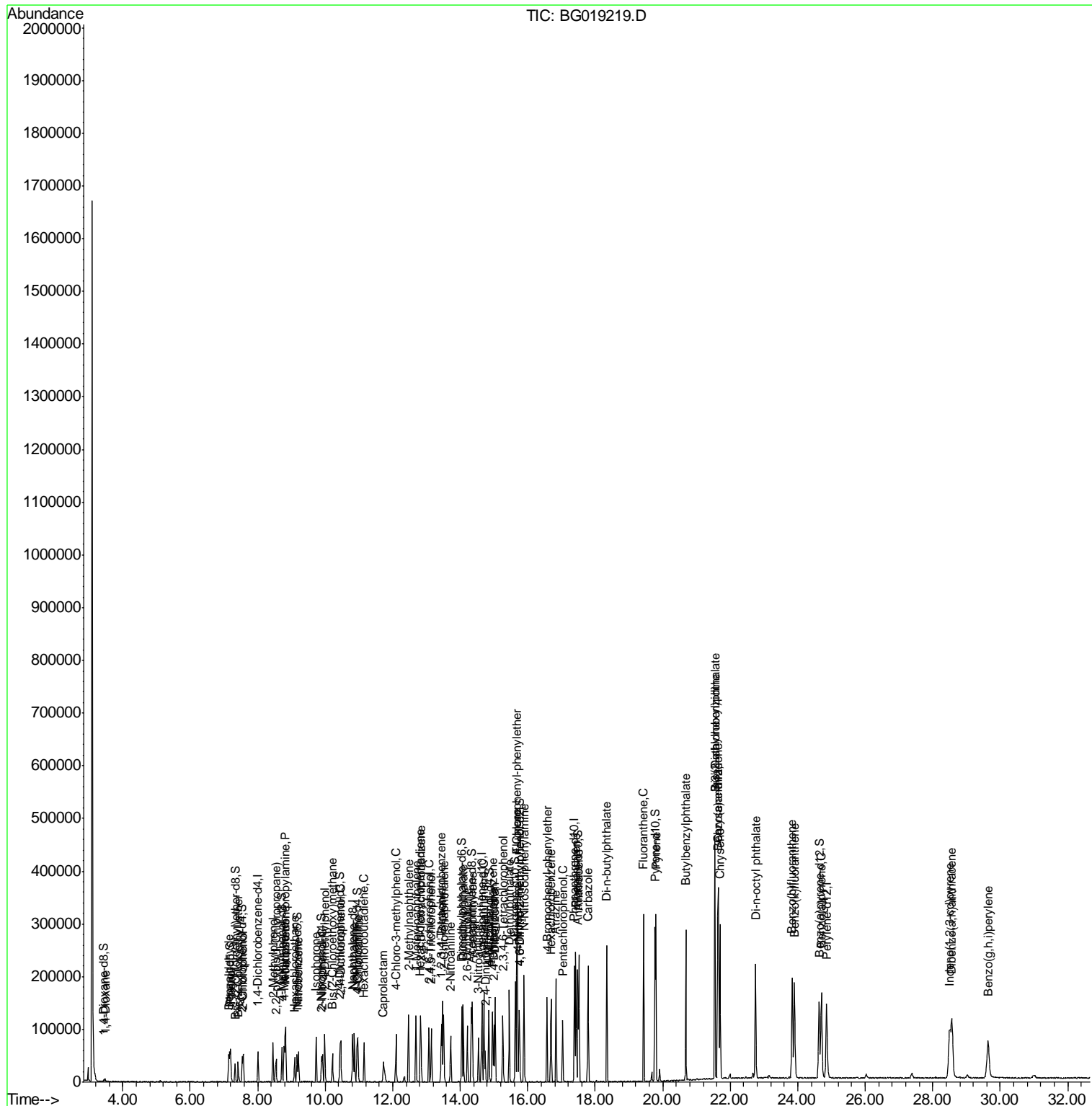
Internal Standards	R.T.	QIon	Response	Conc	Units	Dev(Min)

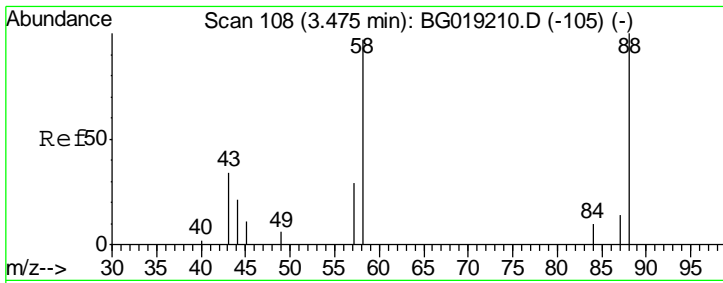
(#) = qualifier out of range (m) = manual integration (+) = signals summed						

Data Path : Z:\HPCHEM1\BNA G\DATA\BG101515\
 Data File : BG019219.D
 Acq On : 15 Oct 2015 23:39
 Operator : UM/NP
 Sample : SSTDCCC020EC
 Misc :
 ALS Vial : 2 Sample Multiplier: 1

Instrument :
 BNA_G
 Client Sampled :
 SSTD02011

Quant Time: Oct 16 04:10:15 2015
 Quant Method : Z:\HPCHEM1\BNA G\METHODS\SOM02.2-EPA-BG101515.M
 Quant Title : SVOA CALIBRATION
 QLast Update : Fri Oct 16 04:07:16 2015
 Response via : Initial Calibration

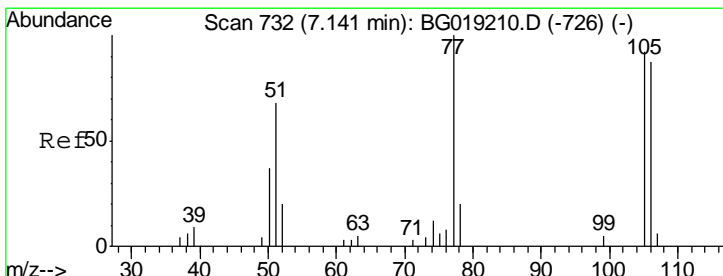
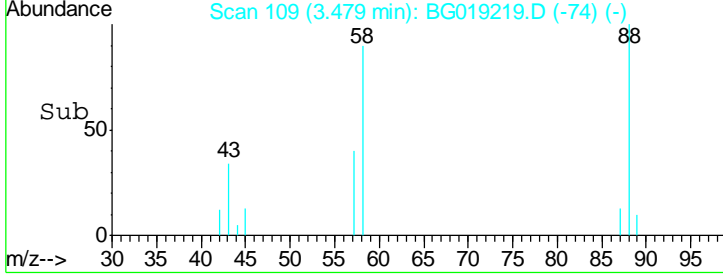
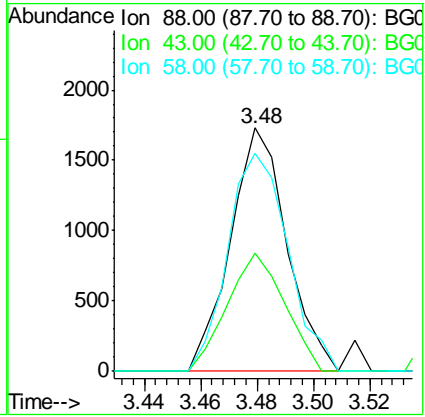
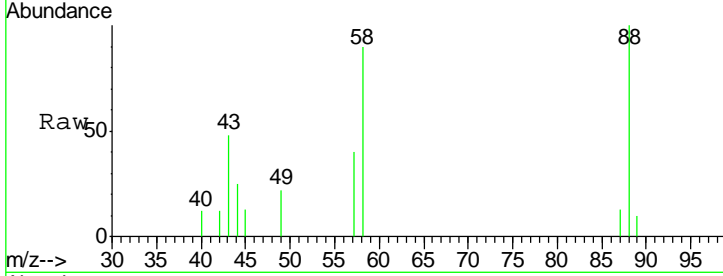




#2
 1,4-Dioxane
 Concen: 7.38 ng/uL
 RT: 3.48 min Scan# 109
 Delta R.T. 0.00 min
 Lab File: BG019219.D
 Acq: 15 Oct 2015 23:39

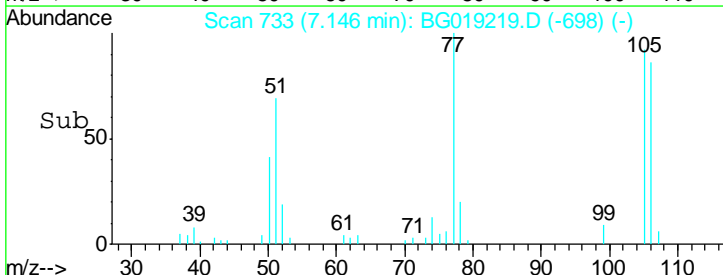
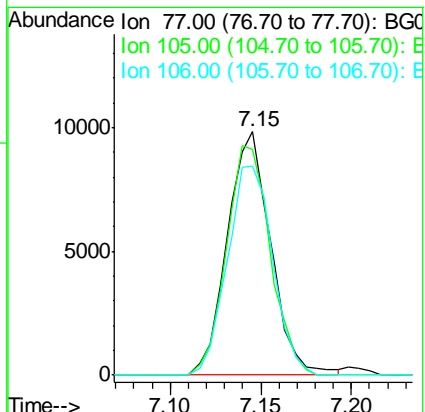
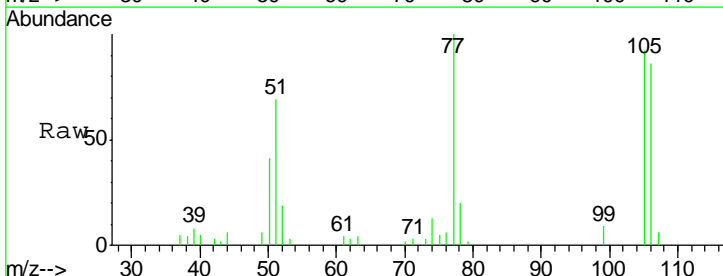
Instrument :
 BNA_G
ClientSampled :
 SSTD02011

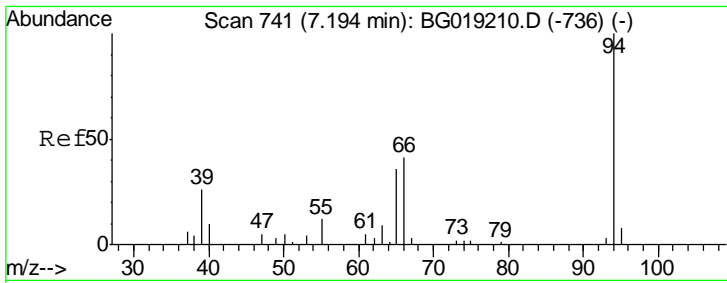
Tgt Ion	Resp	Lower	Upper
88	100		
43	48.3	29.7	44.5#
58	89.6	65.4	98.0



#4
 Benzaldehyde
 Concen: 21.02 ng/uL
 RT: 7.15 min Scan# 733
 Delta R.T. 0.00 min
 Lab File: BG019219.D
 Acq: 15 Oct 2015 23:39

Tgt Ion	Resp	Lower	Upper
77	100		
105	92.5	75.6	113.4
106	86.0	75.8	113.6

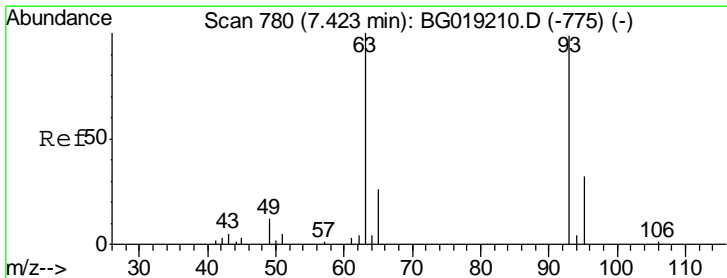
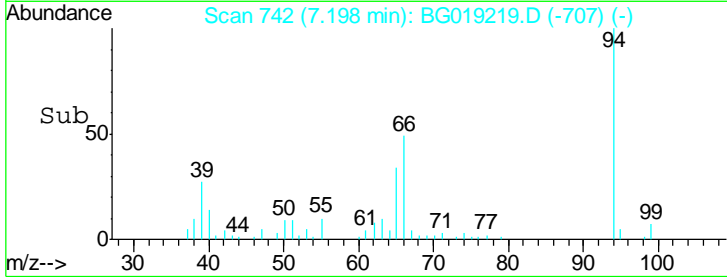
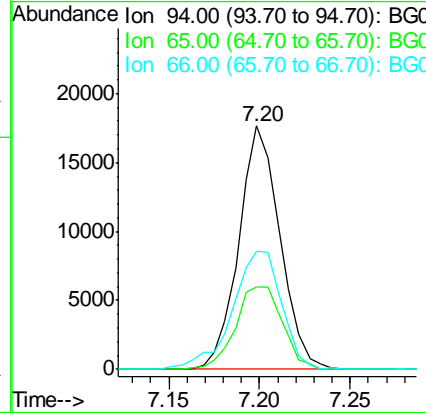
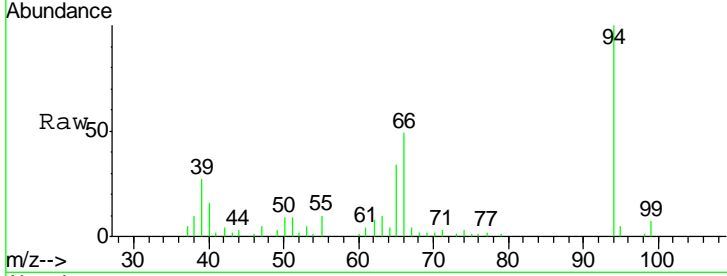




#6
 Phenol
 Concen: 20.01 ng/ul
 RT: 7.20 min Scan# 742
 Delta R.T. 0.00 min
 Lab File: BG019219.D
 Acq: 15 Oct 2015 23:39

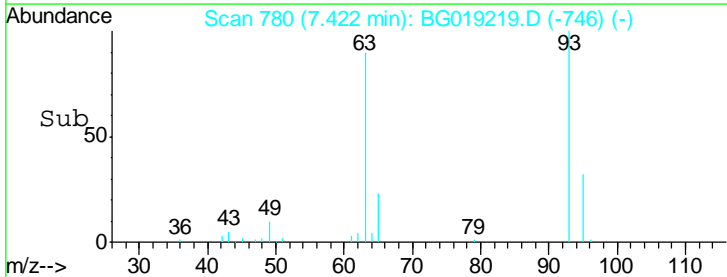
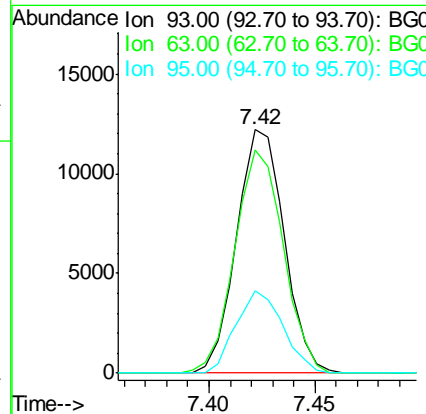
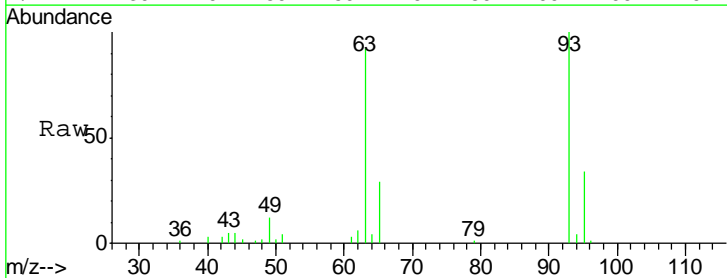
Instrument :
 BNA_G
 ClientSampled :
 SSTD02011

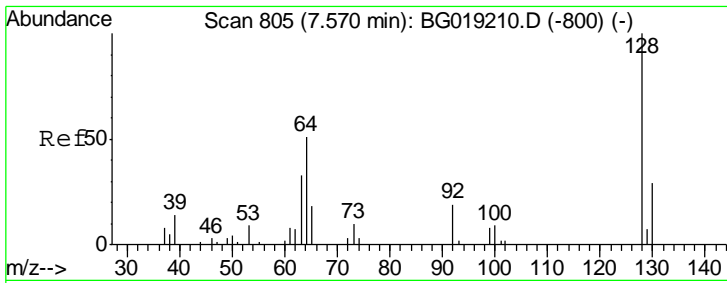
Tgt Ion	Resp	Lower	Upper
94	27913		
65	33.9	24.9	37.3
66	48.6	29.1	43.7#



#8
 Bis(2-Chloroethyl)ether
 Concen: 19.29 ng/ul
 RT: 7.42 min Scan# 780
 Delta R.T. -0.00 min
 Lab File: BG019219.D
 Acq: 15 Oct 2015 23:39

Tgt Ion	Resp	Lower	Upper
93	19085		
63	91.8	73.2	109.8
95	33.8	27.0	40.6

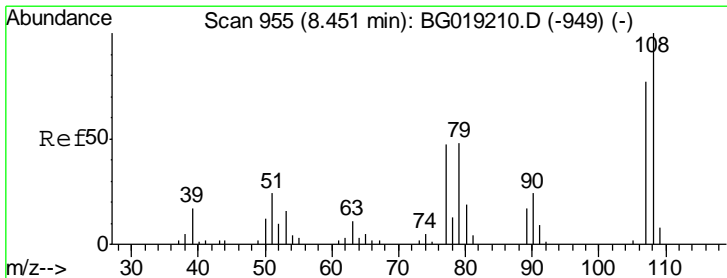
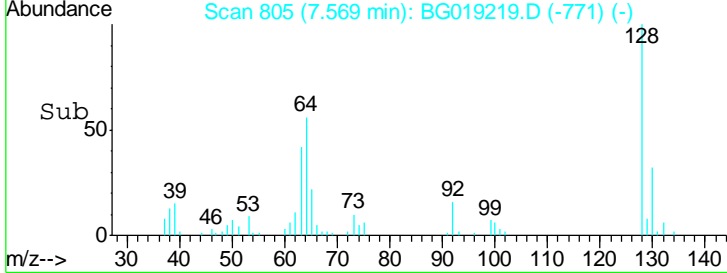
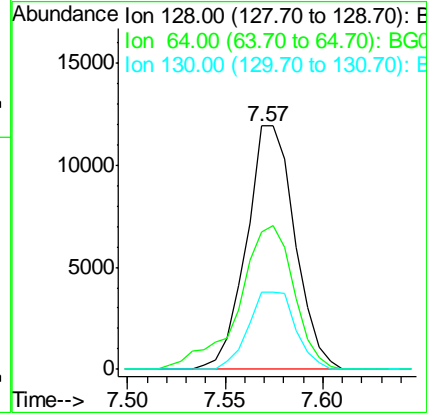
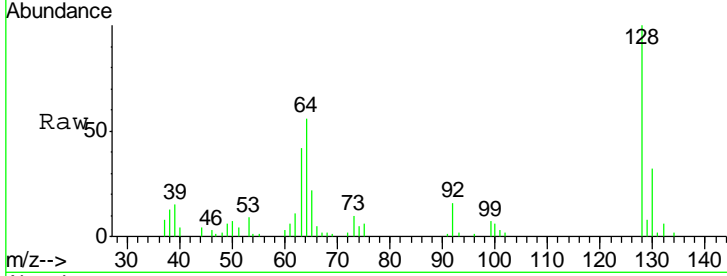




#10
 2-Chlorophenol
 Concen: 20.46 ng/ul
 RT: 7.57 min Scan# 805
 Delta R.T. -0.00 min
 Lab File: BG019219.D
 Acq: 15 Oct 2015 23:39

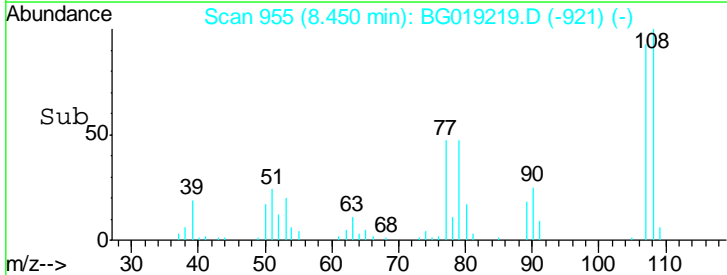
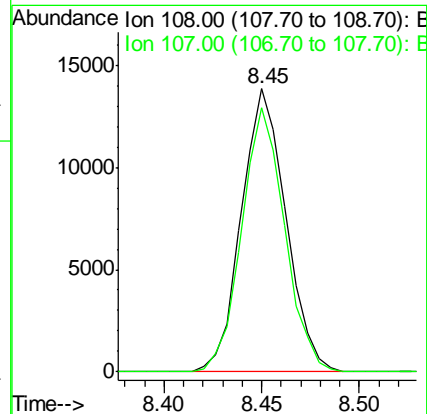
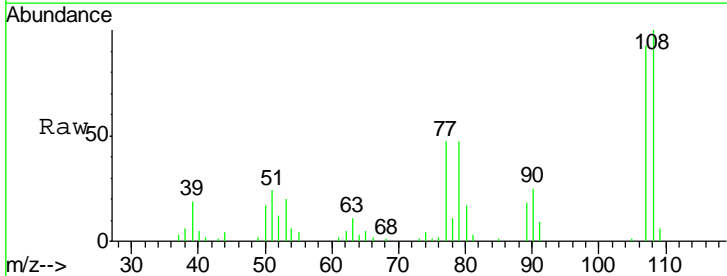
Instrument :
 BNA_G
 ClientSampled :
 SSTD02011

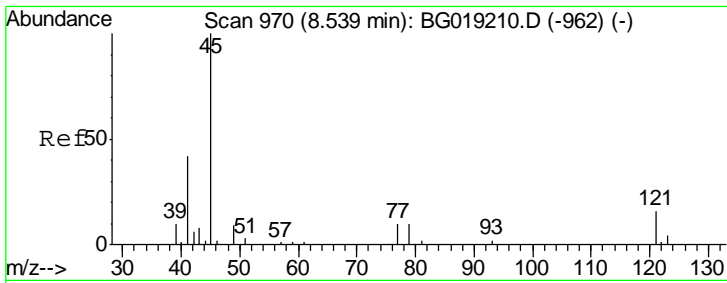
Tgt Ion	Resp	Lower	Upper
128	20507		
64	56.3	43.3	64.9
130	31.8	26.5	39.7



#11
 2-Methylphenol
 Concen: 20.00 ng/ul
 RT: 8.45 min Scan# 955
 Delta R.T. -0.00 min
 Lab File: BG019219.D
 Acq: 15 Oct 2015 23:39

Tgt Ion	Resp	Lower	Upper
108	21892		
107	93.4	76.7	115.1

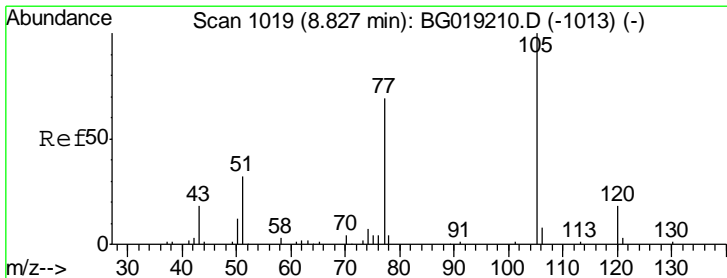
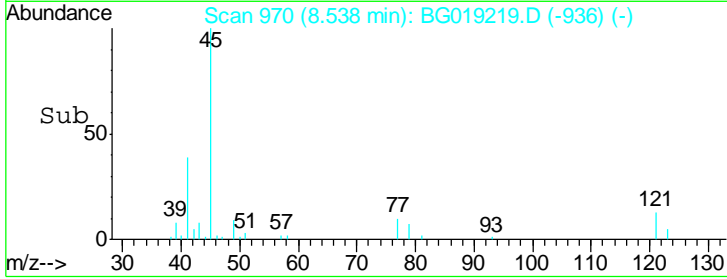
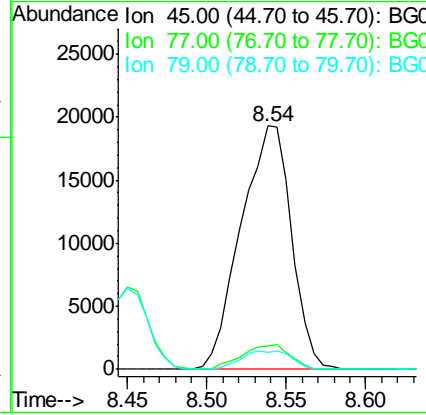
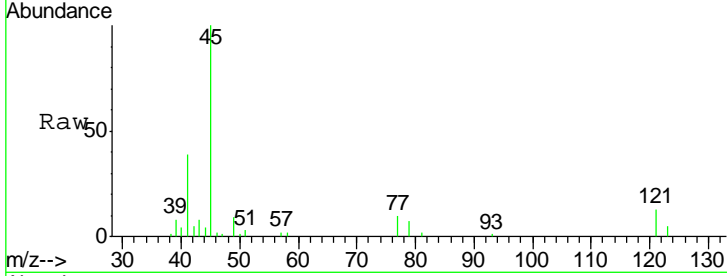




#12
 2,2'-oxybis(1-Chloropropane)
 Concen: 19.32 ng/ul
 RT: 8.54 min Scan# 970
 Delta R.T. -0.00 min
 Lab File: BG019219.D
 Acq: 15 Oct 2015 23:39

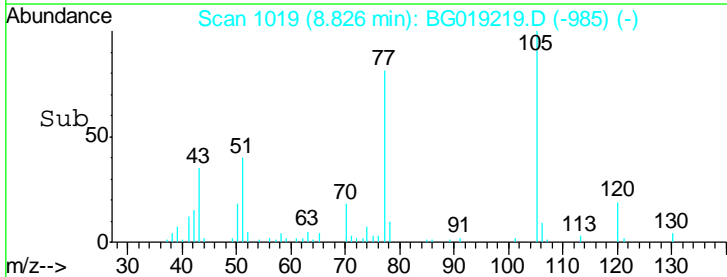
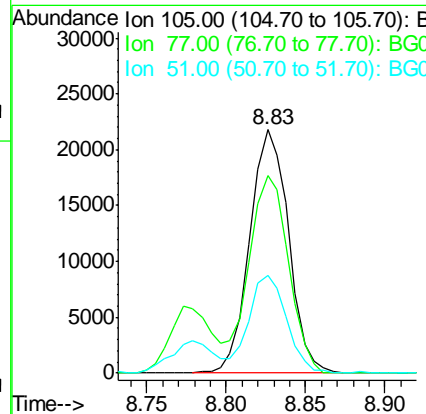
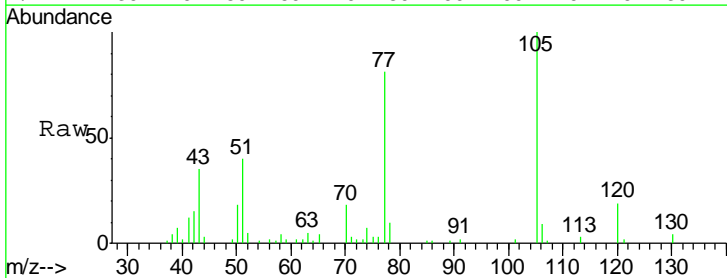
Instrument :
 BNA_G
 ClientSampled :
 SSTD02011

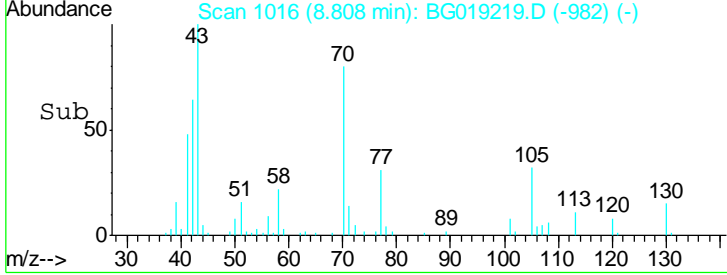
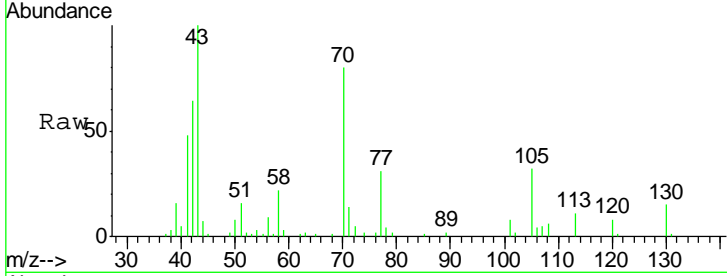
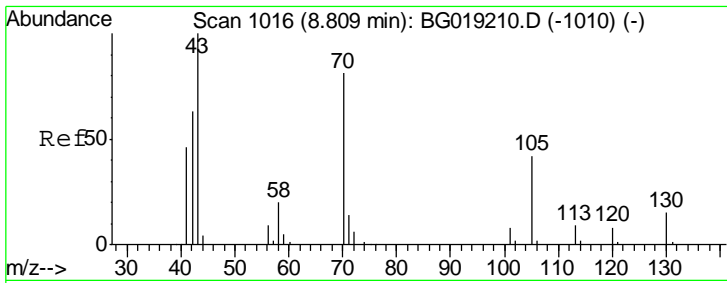
Tgt Ion	Resp	Lower	Upper
45	42599		
77	9.9	8.2	12.2
79	6.9	7.4	11.0#



#14
 Acetophenone
 Concen: 19.40 ng/ul
 RT: 8.83 min Scan# 1019
 Delta R.T. -0.00 min
 Lab File: BG019219.D
 Acq: 15 Oct 2015 23:39

Tgt Ion	Resp	Lower	Upper
105	37151		
77	81.0	63.8	95.6
51	40.1	26.1	39.1#

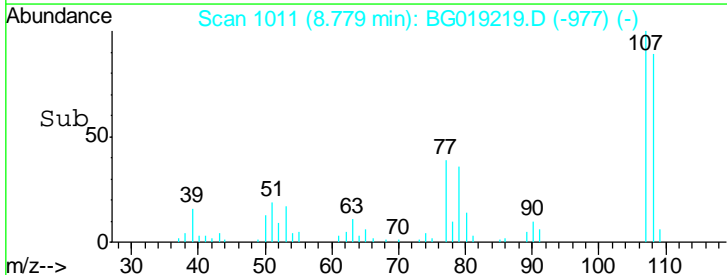
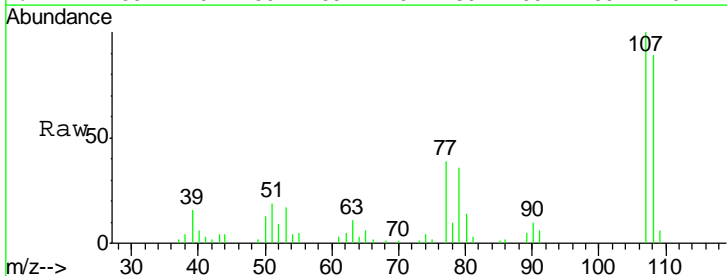
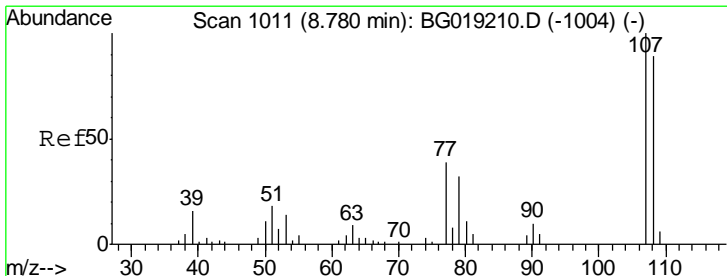
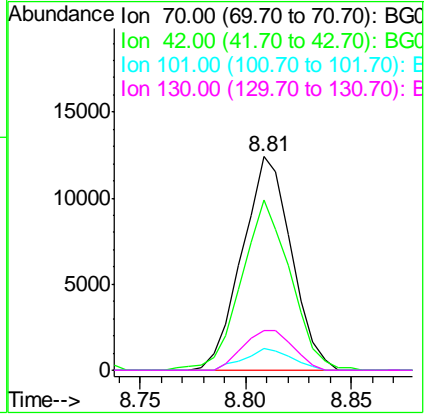




#15
 N-Nitroso-di-n-propylamine
 Concen: 20.51 ng/ul
 RT: 8.81 min Scan# 1016
 Delta R.T. -0.00 min
 Lab File: BG019219.D
 Acq: 15 Oct 2015 23:39

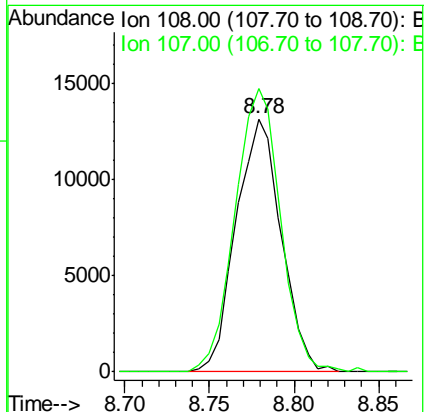
Instrument :
 BNA_G
 ClientSampleId :
 SSTD02011

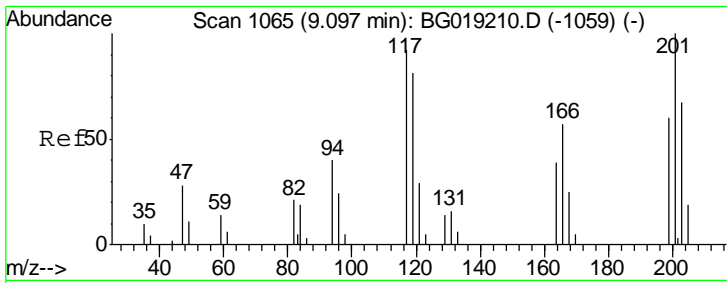
Tgt Ion	Resp	Lower	Upper
70	100		
42	79.5	53.6	80.4
101	9.9	7.9	11.9
130	18.8	16.5	24.7



#16
 4-Methylphenol
 Concen: 19.93 ng/ul
 RT: 8.78 min Scan# 1011
 Delta R.T. -0.00 min
 Lab File: BG019219.D
 Acq: 15 Oct 2015 23:39

Tgt Ion	Resp	Lower	Upper
108	100		
107	111.7	86.6	130.0

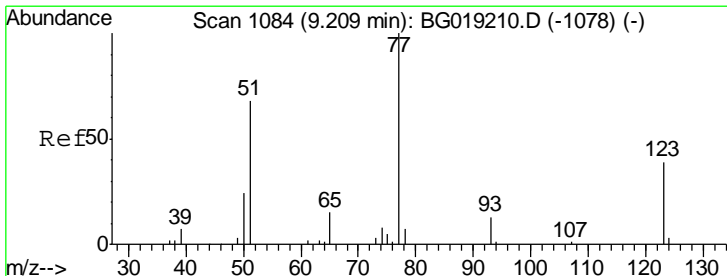
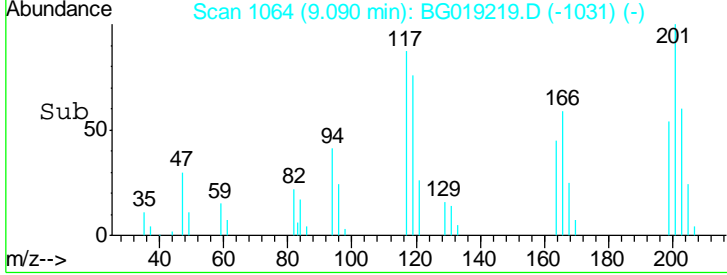
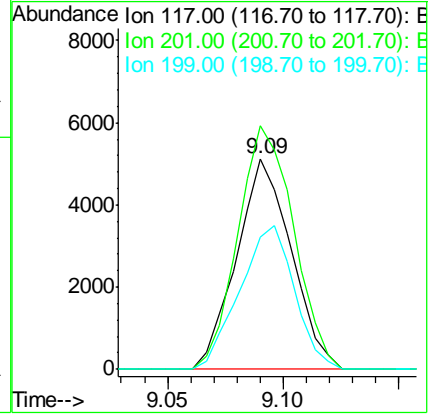
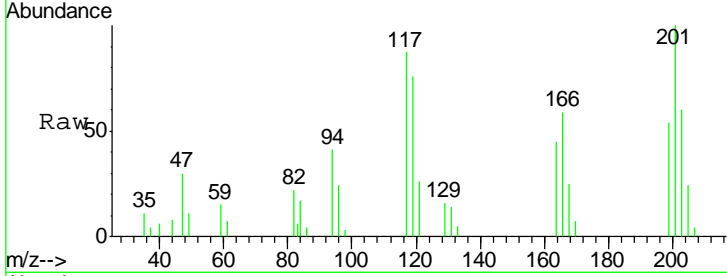




#17
 Hexachloroethane
 Concen: 19.53 ng/ul
 RT: 9.09 min Scan# 1064
 Delta R.T. -0.01 min
 Lab File: BG019219.D
 Acq: 15 Oct 2015 23:39

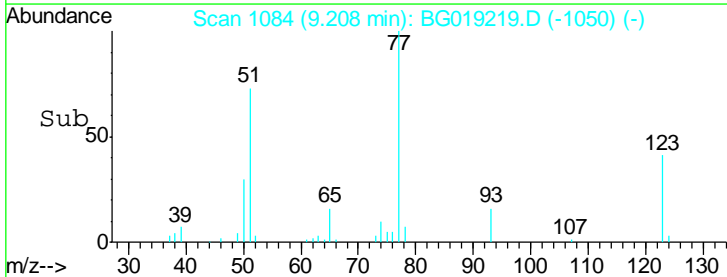
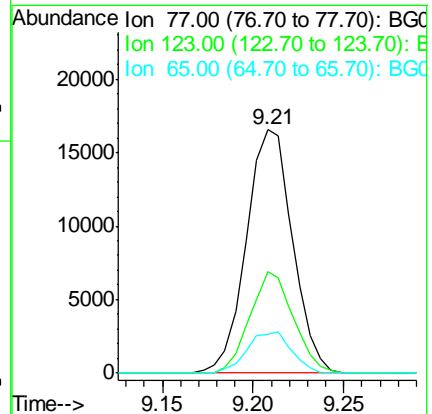
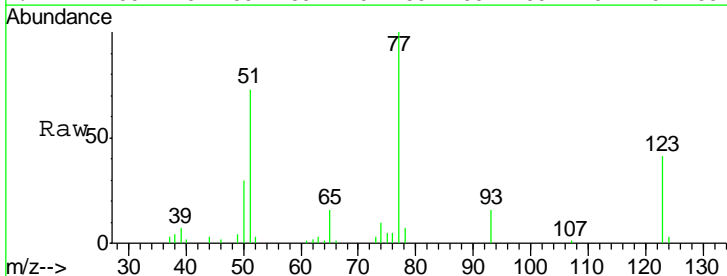
Instrument :
 BNA_G
 ClientSampled :
 SSTD02011

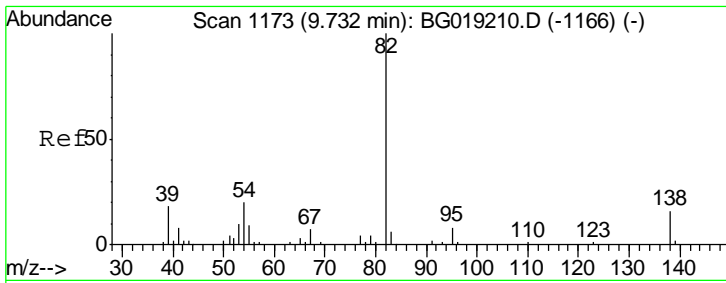
Tgt Ion	Resp	Lower	Upper
117	100		
201	115.5	91.4	137.0
199	62.6	58.7	88.1



#20
 Nitrobenzene
 Concen: 19.91 ng/ul
 RT: 9.21 min Scan# 1084
 Delta R.T. -0.00 min
 Lab File: BG019219.D
 Acq: 15 Oct 2015 23:39

Tgt Ion	Resp	Lower	Upper
77	100		
123	41.5	32.6	48.8
65	15.7	10.6	15.8

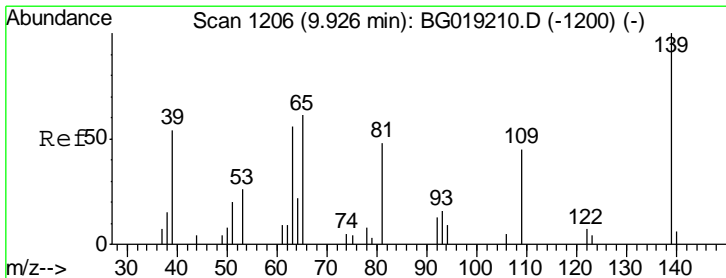
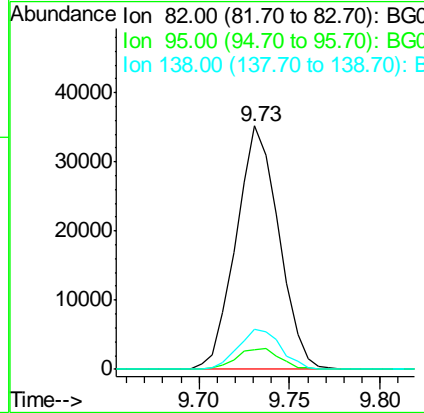
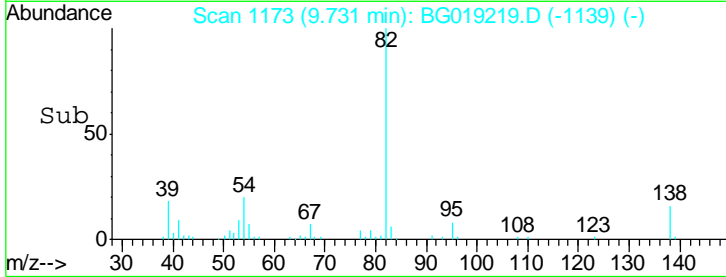
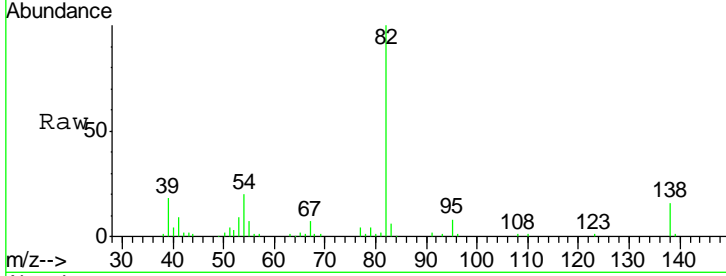




#21
 Isophorone
 Concen: 20.06 ng/ul
 RT: 9.73 min Scan# 1173
 Delta R.T. -0.00 min
 Lab File: BG019219.D
 Acq: 15 Oct 2015 23:39

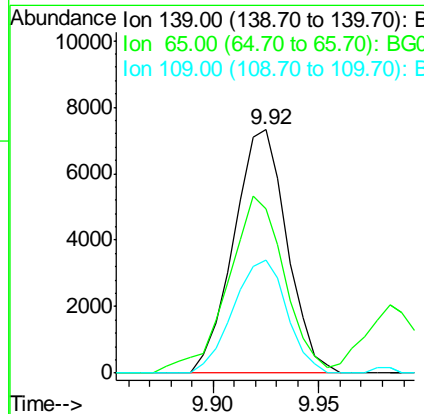
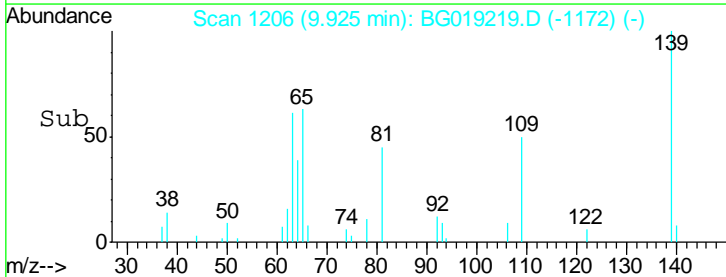
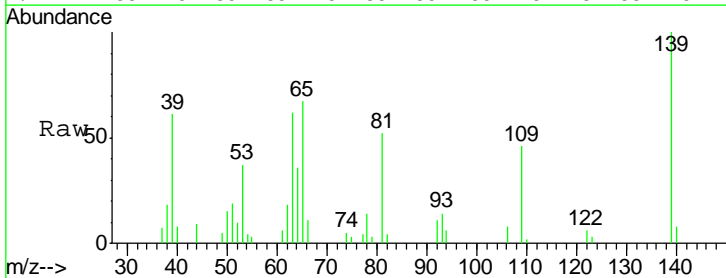
Instrument :
 BNA_G
 ClientSampled :
 SSTD02011

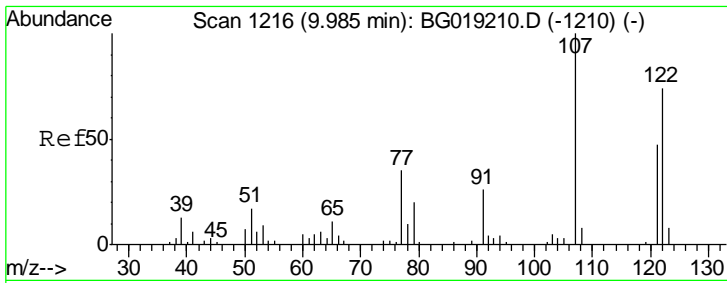
Tgt Ion	Resp	Lower	Upper
82	57539		
95	8.0	5.1	7.7#
138	16.2	12.2	18.2



#23
 2-Nitrophenol
 Concen: 21.10 ng/ul
 RT: 9.92 min Scan# 1206
 Delta R.T. -0.00 min
 Lab File: BG019219.D
 Acq: 15 Oct 2015 23:39

Tgt Ion	Resp	Lower	Upper
139	12779		
65	67.3	45.6	68.4
109	46.5	24.7	37.1#

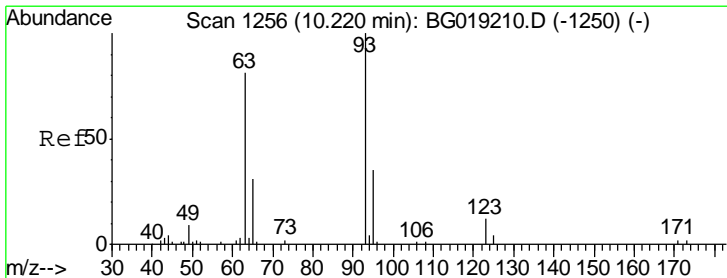
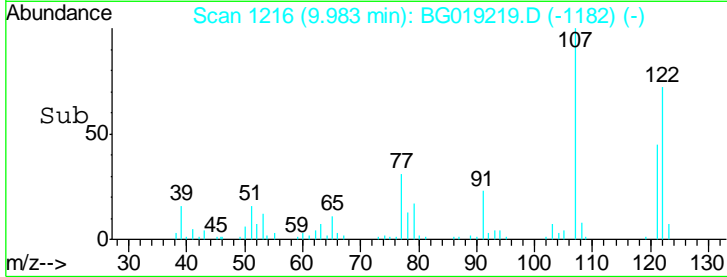
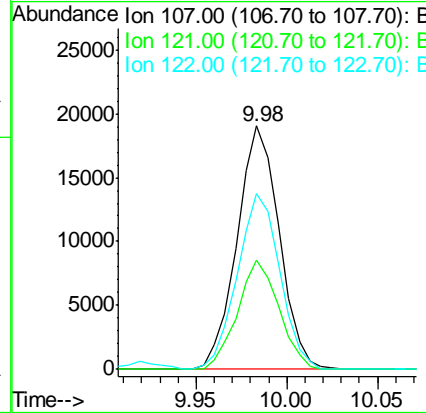
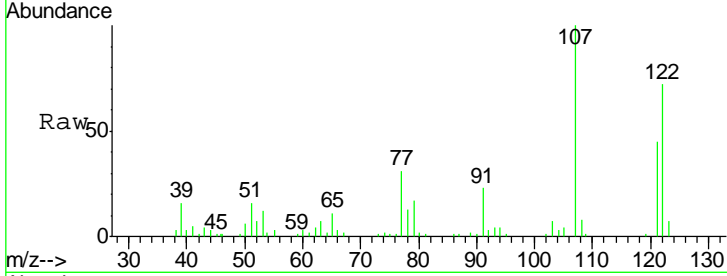




#24
 2,4-Dimethylphenol
 Concen: 21.03 ng/ul
 RT: 9.98 min Scan# 1216
 Delta R.T. -0.00 min
 Lab File: BG019219.D
 Acq: 15 Oct 2015 23:39

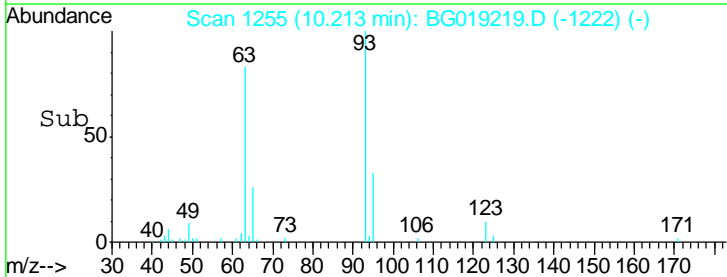
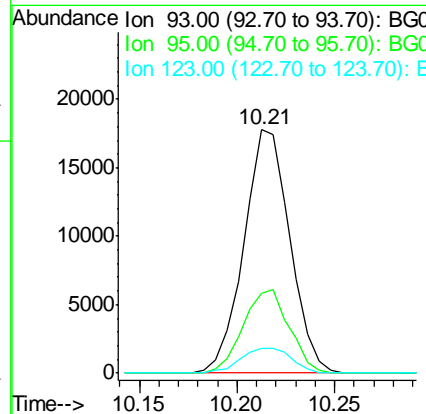
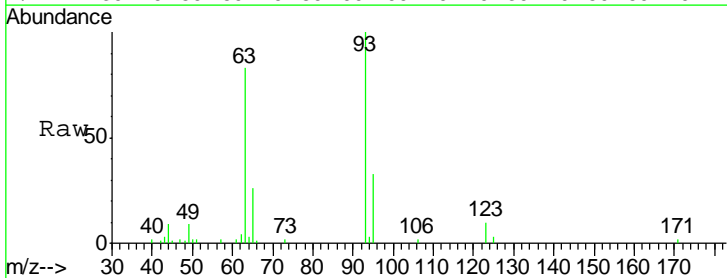
Instrument :
 BNA_G
 ClientSampled :
 SSTD02011

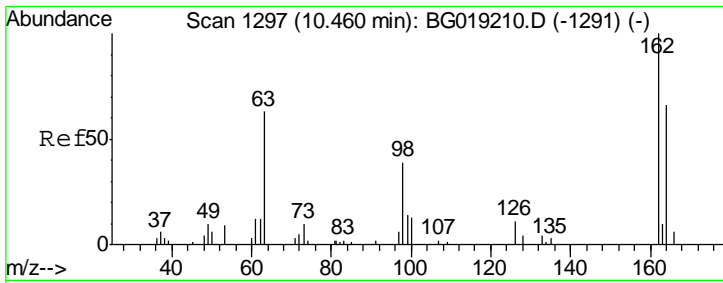
Tgt Ion	Resp	Lower	Upper
107	30853		
121	44.9	37.2	55.8
122	72.0	67.6	101.4



#25
 Bis(2-Chloroethoxy)methane
 Concen: 19.55 ng/ul
 RT: 10.21 min Scan# 1255
 Delta R.T. -0.01 min
 Lab File: BG019219.D
 Acq: 15 Oct 2015 23:39

Tgt Ion	Resp	Lower	Upper
93	28968		
95	32.7	25.4	38.0
123	10.3	8.0	12.0

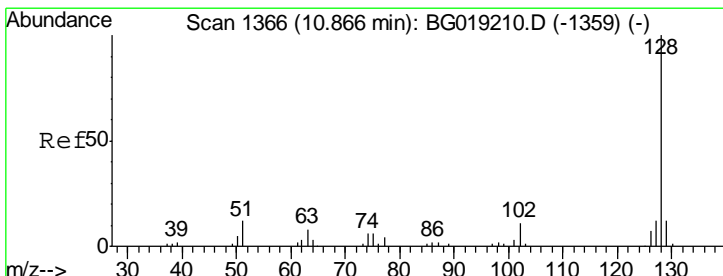
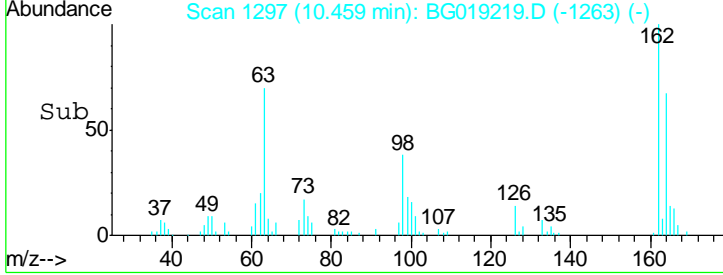
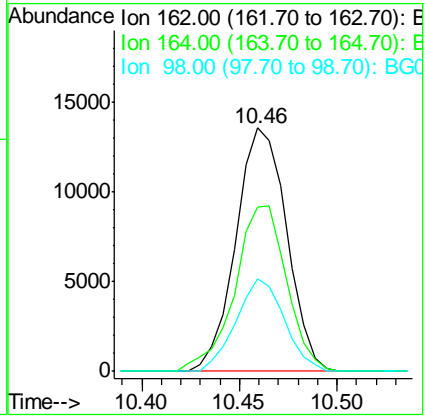
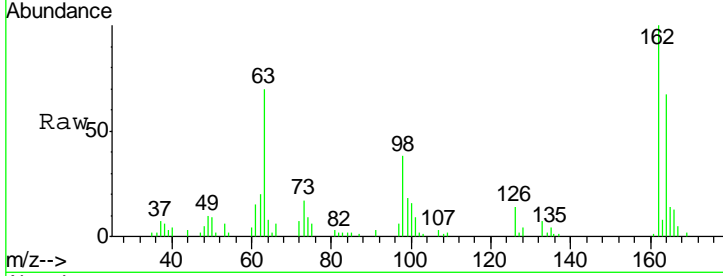




#27
 2,4-Dichlorophenol
 Concen: 21.43 ng/ul
 RT: 10.46 min Scan# 1297
 Delta R.T. -0.00 min
 Lab File: BG019219.D
 Acq: 15 Oct 2015 23:39

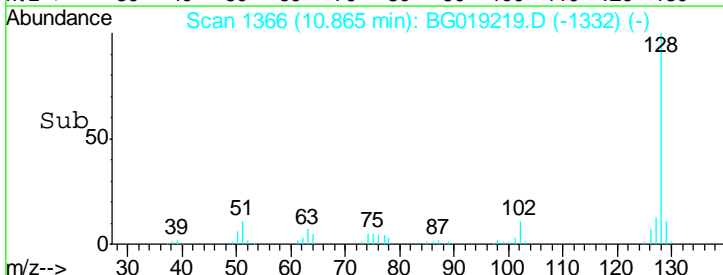
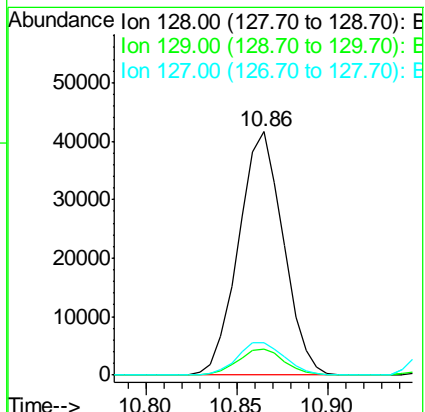
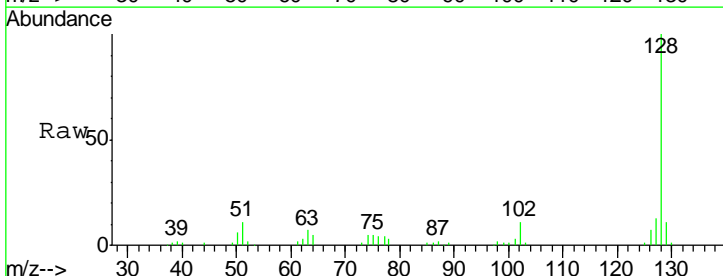
Instrument :
 BNA_G
 ClientSampled :
 SSTD02011

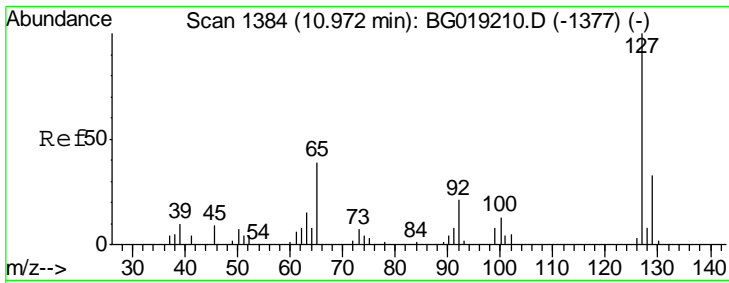
Tgt Ion	Resp	Lower	Upper
162	24431		
164	100	50.0	75.0
98	37.9	29.0	43.6



#28
 Naphthalene
 Concen: 19.54 ng/ul
 RT: 10.86 min Scan# 1366
 Delta R.T. -0.00 min
 Lab File: BG019219.D
 Acq: 15 Oct 2015 23:39

Tgt Ion	Resp	Lower	Upper
128	71198		
129	10.5	9.6	14.4
127	13.5	11.3	16.9

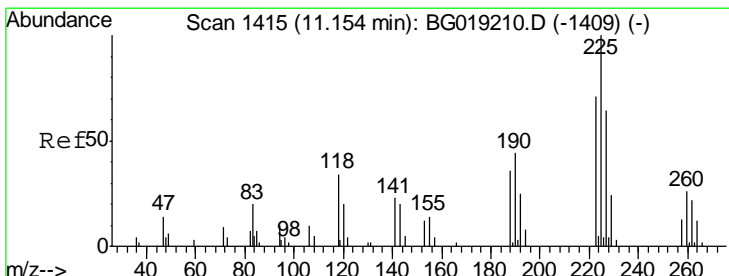
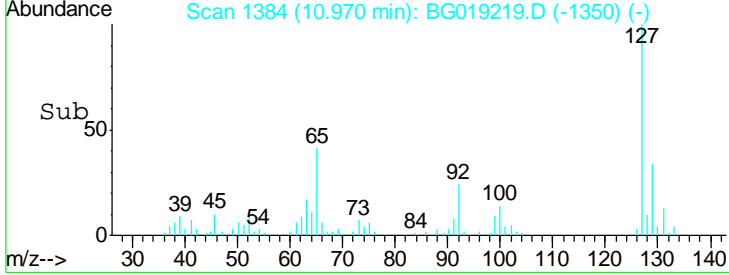
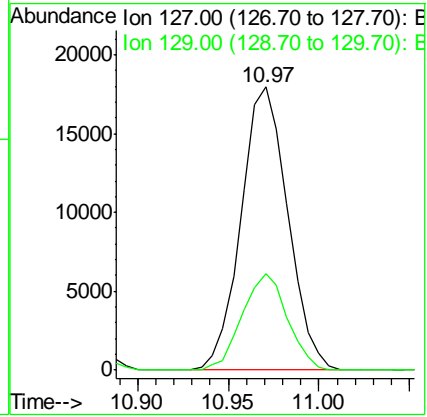
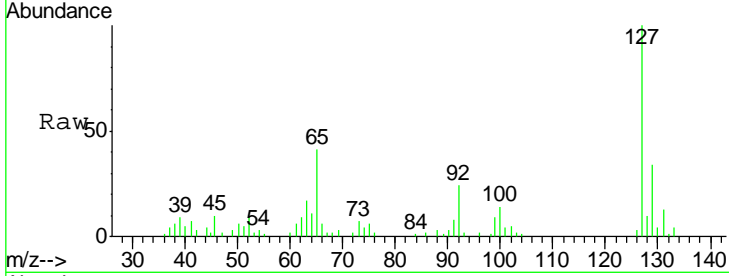




#30
 4-Chloroaniline
 Concen: 21.44 ng/ul
 RT: 10.97 min Scan# 1384
 Delta R.T. -0.00 min
 Lab File: BG019219.D
 Acq: 15 Oct 2015 23:39

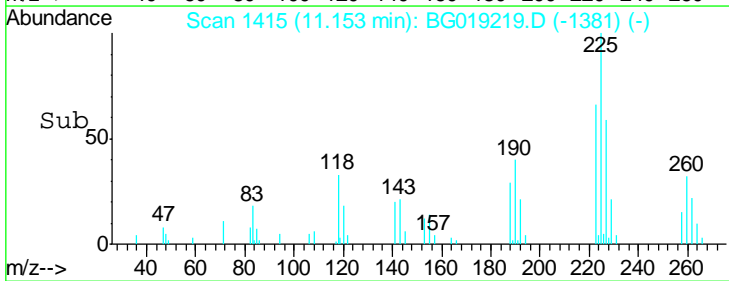
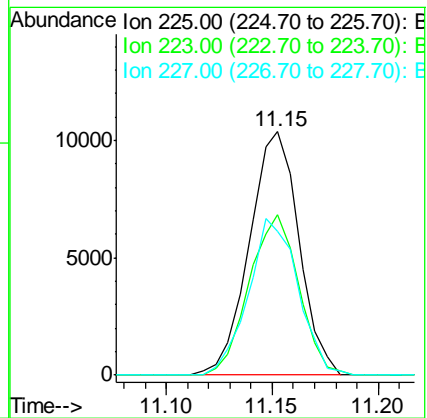
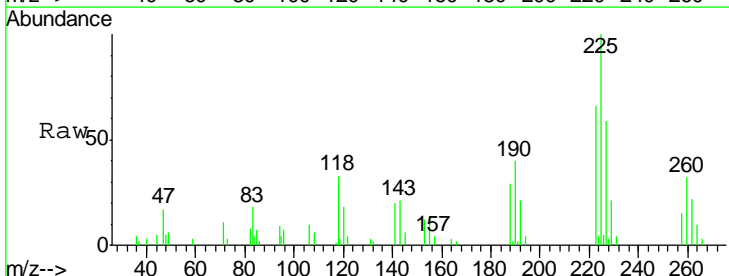
Instrument :
 BNA_G
 ClientSampled :
 SST02011

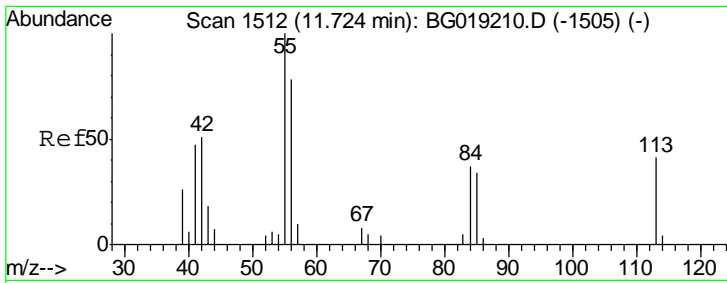
Tgt Ion	Resp	Lower	Upper
127	32119		
129	34.0	24.3	36.5



#31
 Hexachlorobutadiene
 Concen: 20.26 ng/ul
 RT: 11.15 min Scan# 1415
 Delta R.T. -0.00 min
 Lab File: BG019219.D
 Acq: 15 Oct 2015 23:39

Tgt Ion	Resp	Lower	Upper
225	16867		
223	66.0	52.6	79.0
227	59.2	54.0	81.0

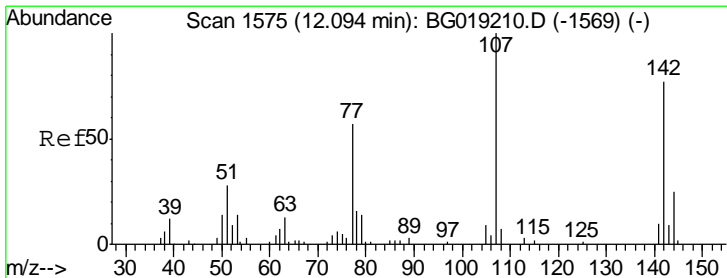
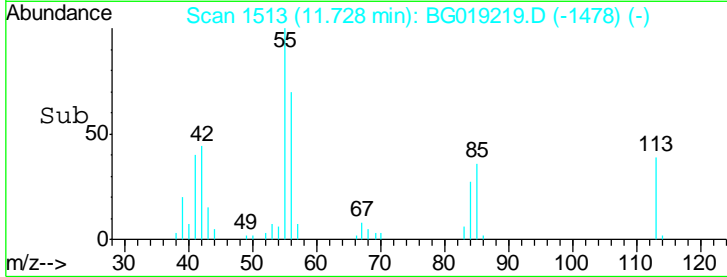
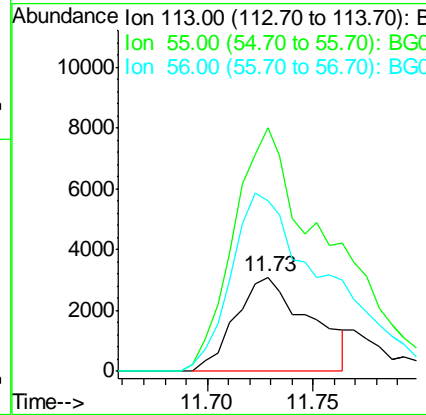
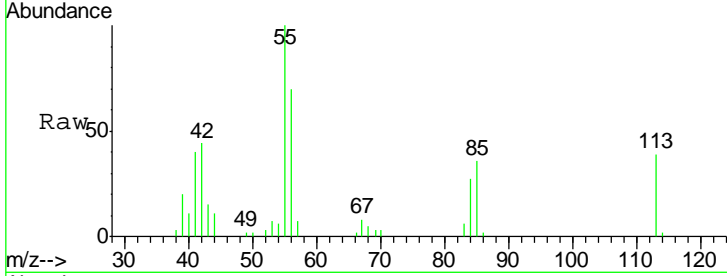




#32
 Caprolactam
 Concen: 17.79 ng/ul
 RT: 11.73 min Scan# 1513
 Delta R.T. 0.00 min
 Lab File: BG019219.D
 Acq: 15 Oct 2015 23:39

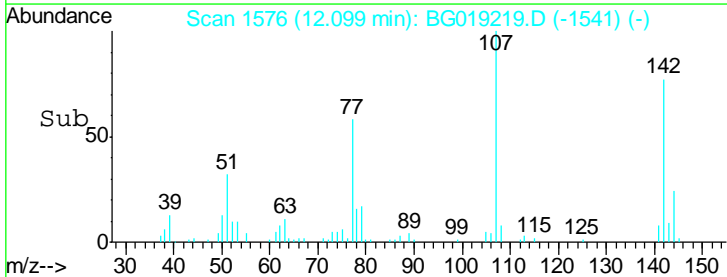
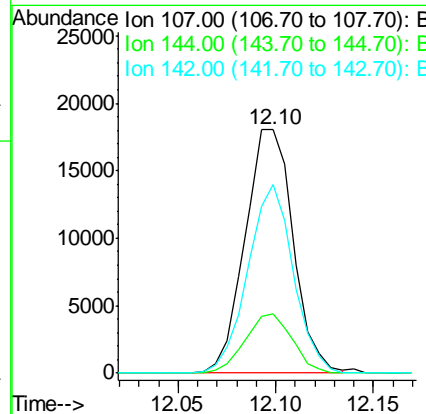
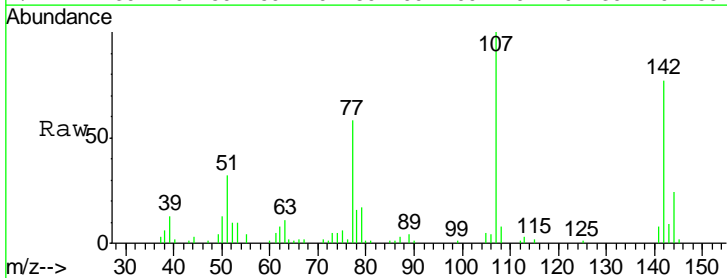
Instrument :
 BNA_G
 ClientSampled :
 SSTD02011

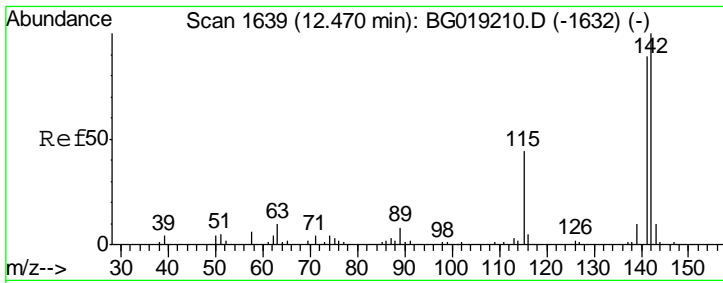
Tgt Ion	Resp	Lower	Upper
113	100		
55	258.3	169.3	253.9#
56	180.4	125.8	188.8



#33
 4-Chloro-3-methylphenol
 Concen: 21.48 ng/ul
 RT: 12.10 min Scan# 1576
 Delta R.T. 0.00 min
 Lab File: BG019219.D
 Acq: 15 Oct 2015 23:39

Tgt Ion	Resp	Lower	Upper
107	100		
144	24.4	20.9	31.3
142	77.4	65.6	98.4

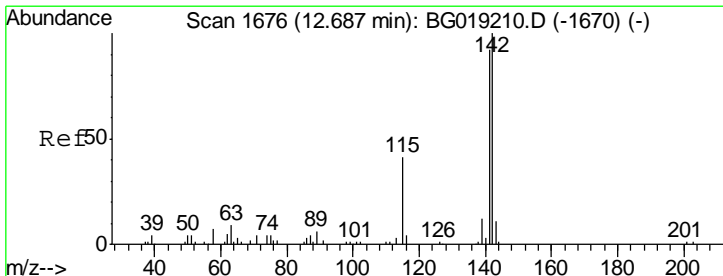
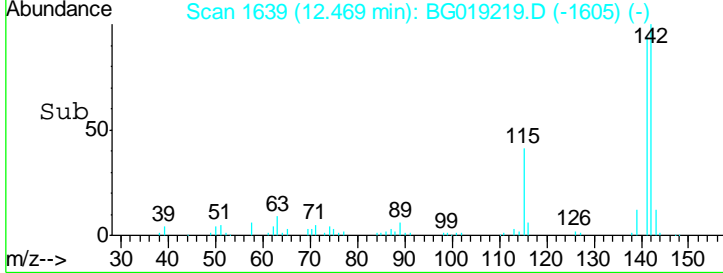
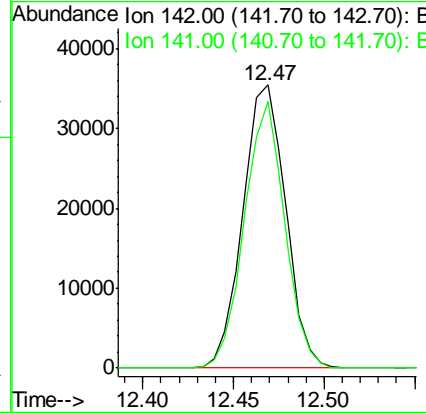
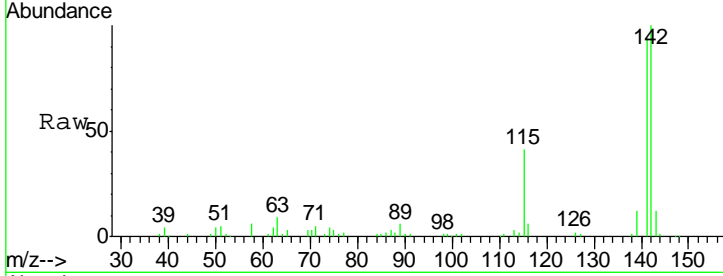




#34
 2-Methylnaphthalene
 Concen: 20.29 ng/ul
 RT: 12.47 min Scan# 1639
 Delta R.T. -0.00 min
 Lab File: BG019219.D
 Acq: 15 Oct 2015 23:39

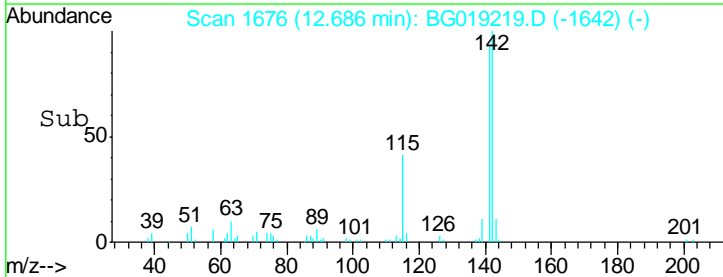
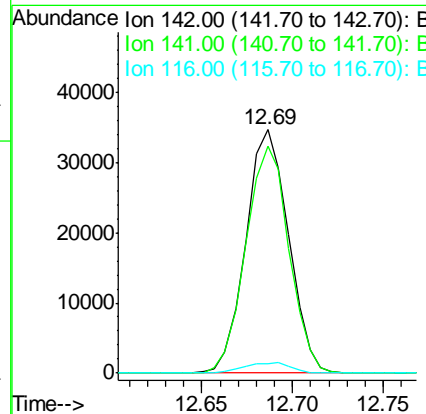
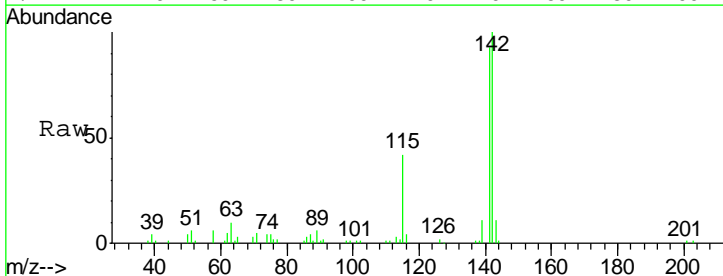
Instrument :
 BNA_G
 ClientSampleID :
 SSTD02011

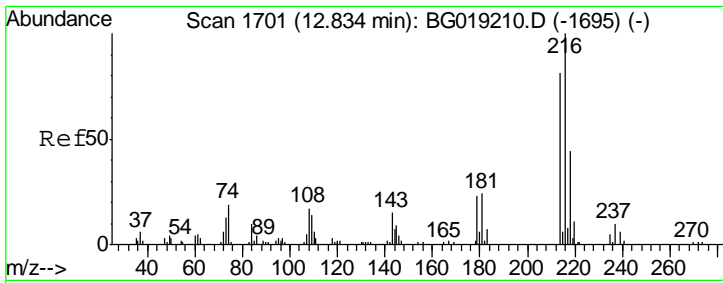
Tgt Ion:142 Resp: 58584
 Ion Ratio Lower Upper
 142 100
 141 94.4 73.4 110.0



#35
 1-Methylnaphthalene
 Concen: 20.04 ng/ul
 RT: 12.69 min Scan# 1676
 Delta R.T. -0.00 min
 Lab File: BG019219.D
 Acq: 15 Oct 2015 23:39

Tgt Ion:142 Resp: 56675
 Ion Ratio Lower Upper
 142 100
 141 93.4 74.8 112.2
 116 3.9 3.2 4.8

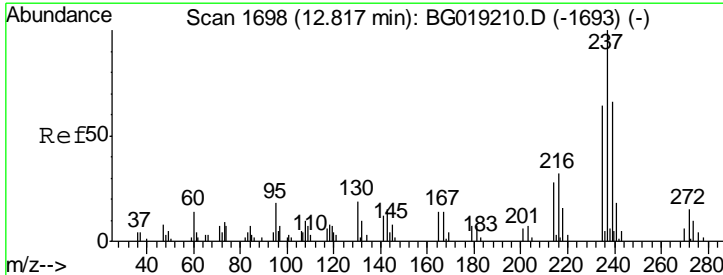
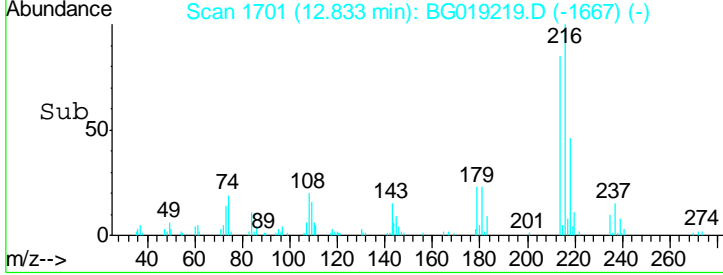
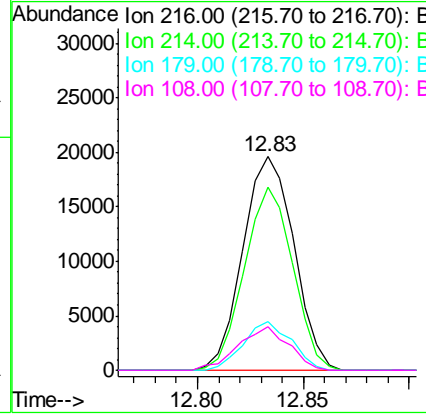
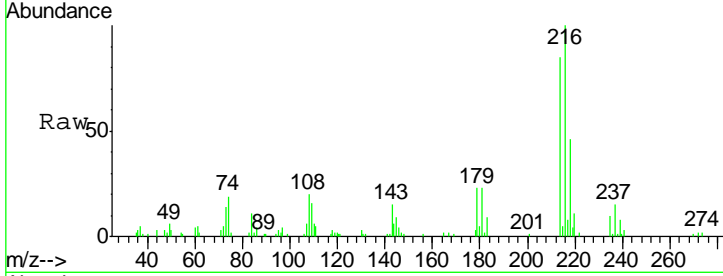




#37
 1,2,4,5-Tetrachlorobenzene
 Concen: 20.08 ng/ul
 RT: 12.83 min Scan# 1701
 Delta R.T. -0.00 min
 Lab File: BG019219.D
 Acq: 15 Oct 2015 23:39

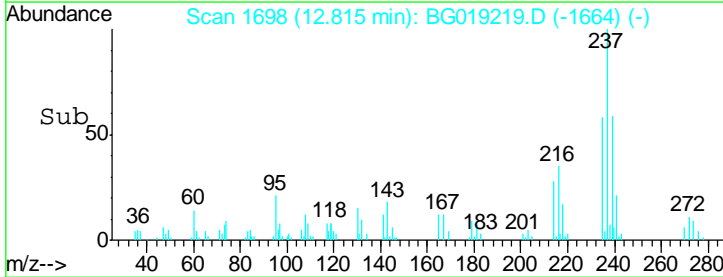
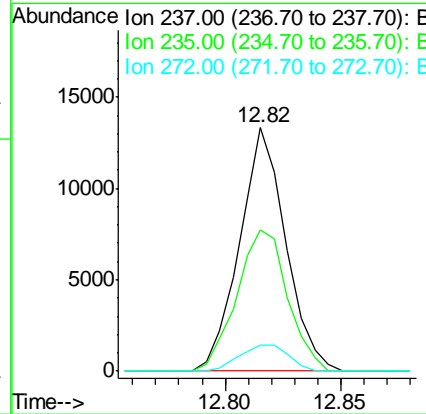
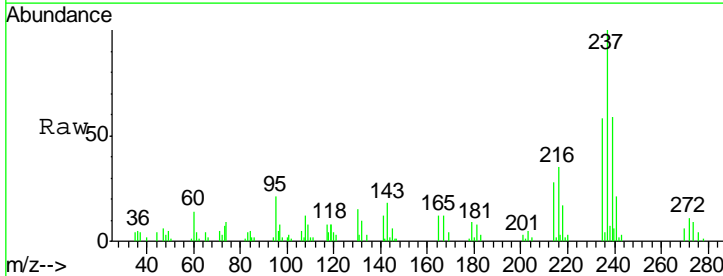
Instrument :
 BNA_G
 ClientSampleID :
 SSTD02011

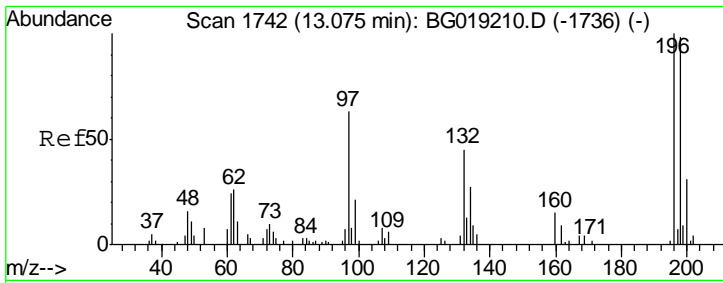
Tgt Ion	Resp	Lower	Upper
216	32964		
214	85.5	62.6	94.0
179	23.0	14.6	22.0#
108	20.2	12.9	19.3#



#38
 Hexachlorocyclopentadiene
 Concen: 18.99 ng/ul
 RT: 12.82 min Scan# 1698
 Delta R.T. -0.00 min
 Lab File: BG019219.D
 Acq: 15 Oct 2015 23:39

Tgt Ion	Resp	Lower	Upper
237	18542		
235	57.9	51.7	77.5
272	10.7	10.2	15.2

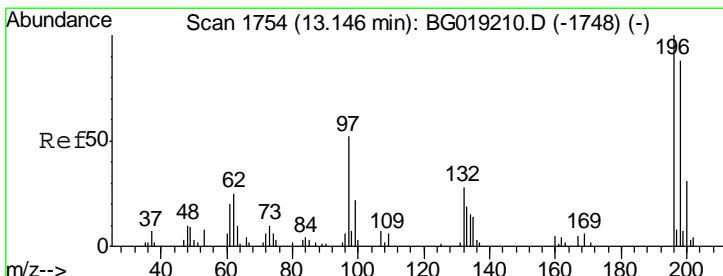
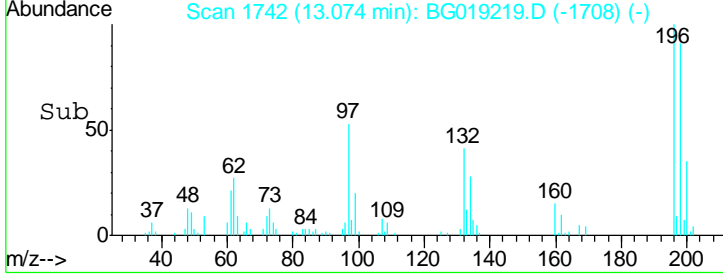
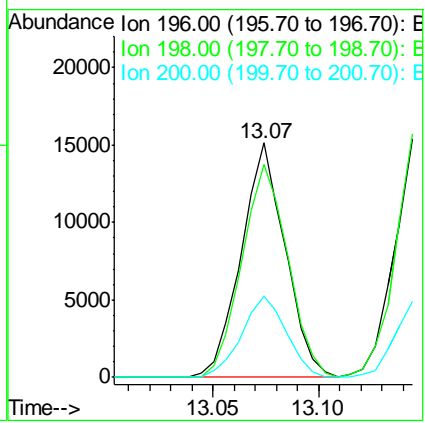
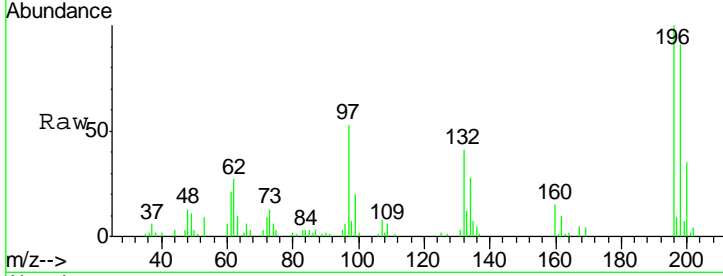




#39
 2,4,6-Trichlorophenol
 Concen: 21.51 ng/ul
 RT: 13.07 min Scan# 1742
 Delta R.T. -0.00 min
 Lab File: BG019219.D
 Acq: 15 Oct 2015 23:39

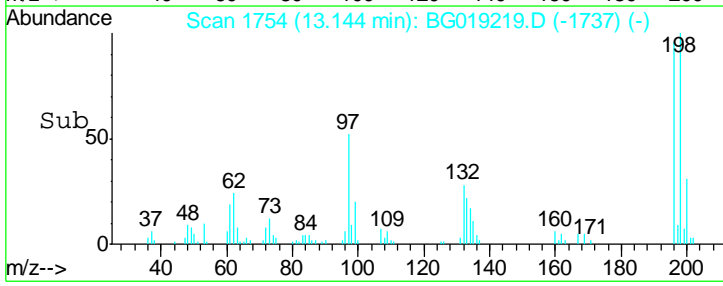
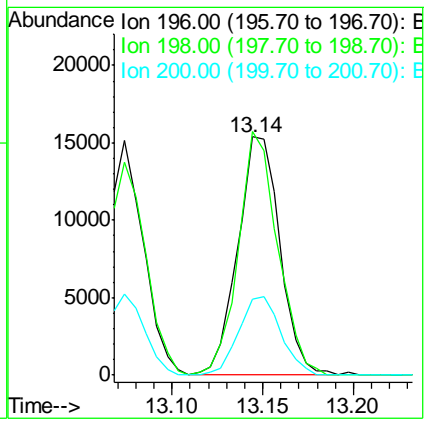
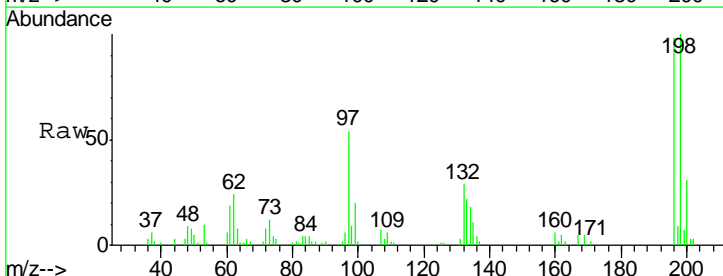
Instrument :
 BNA_G
 ClientSampled :
 SST02011

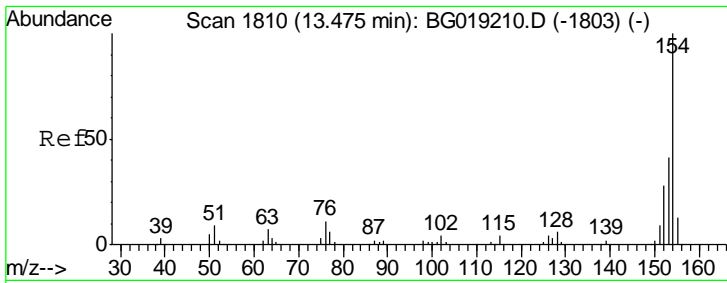
Tgt Ion	Resp	Lower	Upper
196	21965		
198	90.8	79.0	118.6
200	34.6	25.8	38.6



#40
 2,4,5-Trichlorophenol
 Concen: 22.12 ng/ul
 RT: 13.14 min Scan# 1754
 Delta R.T. -0.00 min
 Lab File: BG019219.D
 Acq: 15 Oct 2015 23:39

Tgt Ion	Resp	Lower	Upper
196	24849		
198	102.1	73.9	110.9
200	31.8	27.1	40.7

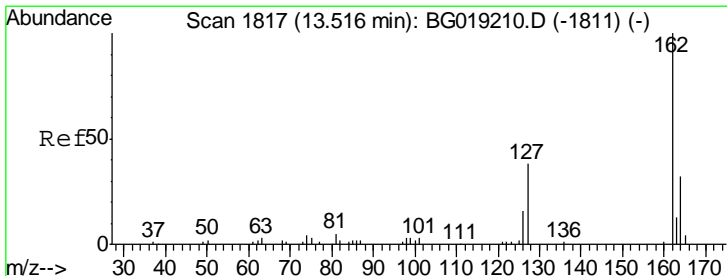
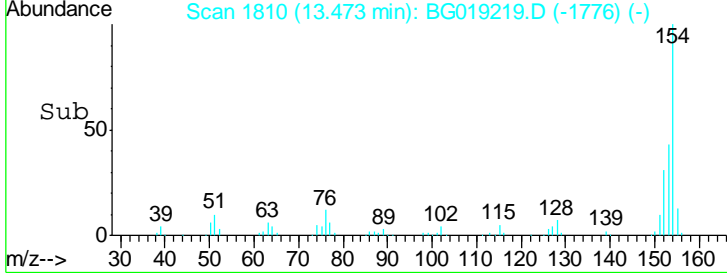
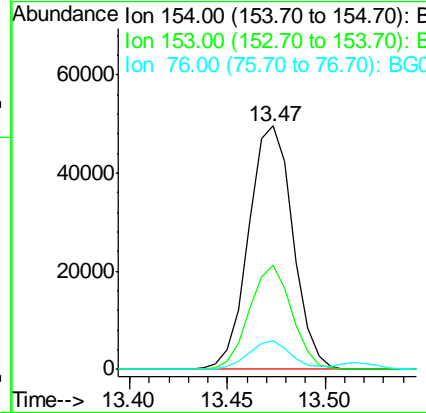
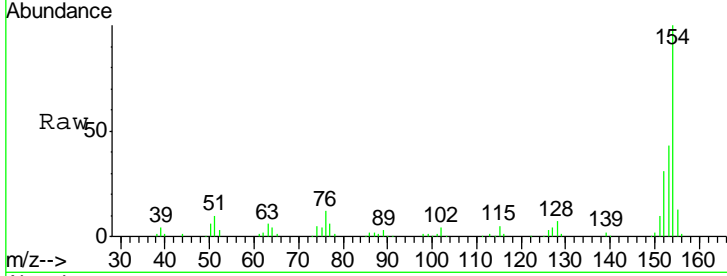




#41
 1,1'-Biphenyl
 Concen: 19.45 ng/ul
 RT: 13.47 min Scan# 1810
 Delta R.T. -0.00 min
 Lab File: BG019219.D
 Acq: 15 Oct 2015 23:39

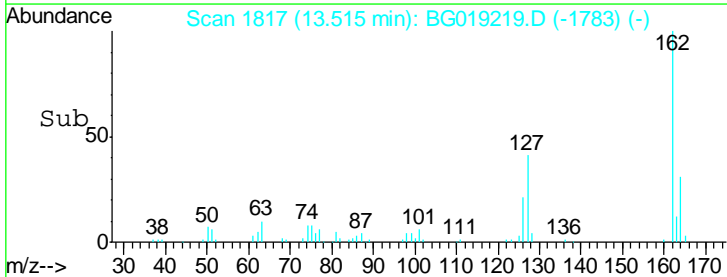
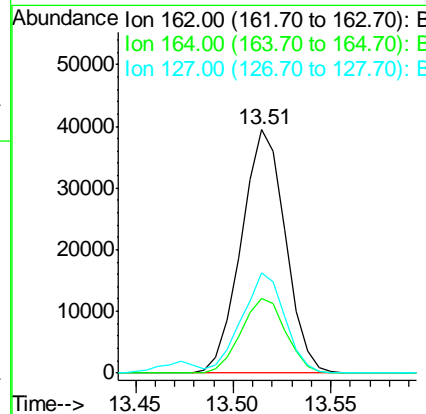
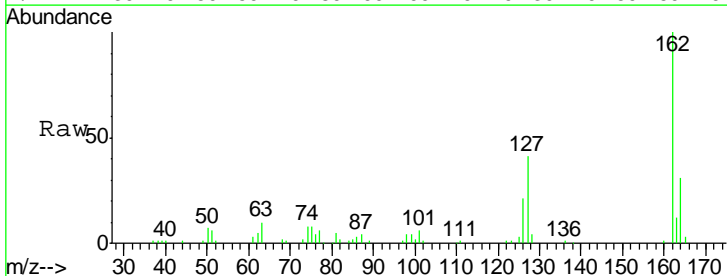
Instrument :
 BNA_G
 ClientSampled :
 SSTD02011

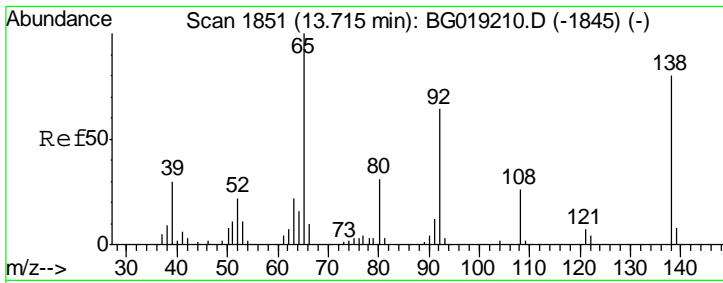
Tgt Ion	Resp	Lower	Upper
154	77779		
153	42.8	31.4	47.0
76	11.6	10.8	16.2



#42
 2-Chloronaphthalene
 Concen: 19.99 ng/ul
 RT: 13.51 min Scan# 1817
 Delta R.T. -0.00 min
 Lab File: BG019219.D
 Acq: 15 Oct 2015 23:39

Tgt Ion	Resp	Lower	Upper
162	61814		
164	30.8	25.8	38.8
127	41.0	29.0	43.4

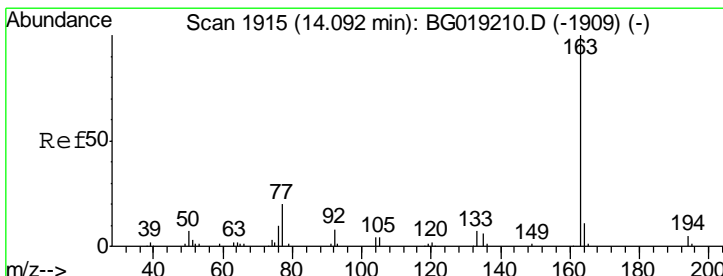
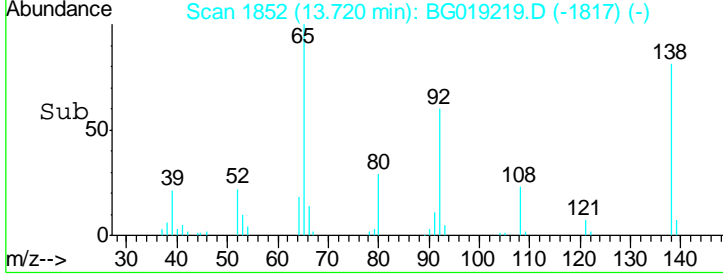
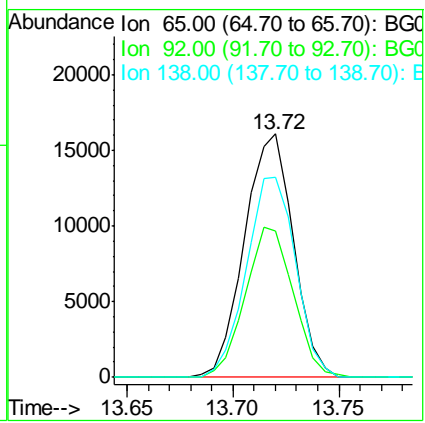
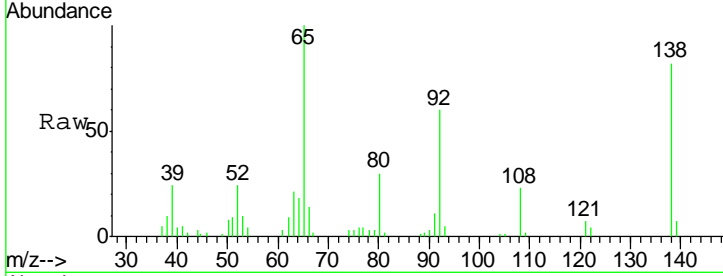




#43
 2-Nitroaniline
 Concen: 21.36 ng/ul
 RT: 13.72 min Scan# 1852
 Delta R.T. 0.00 min
 Lab File: BG019219.D
 Acq: 15 Oct 2015 23:39

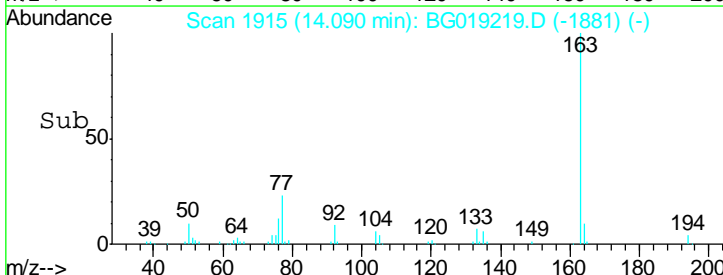
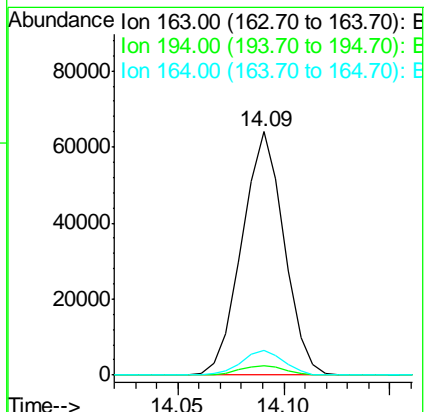
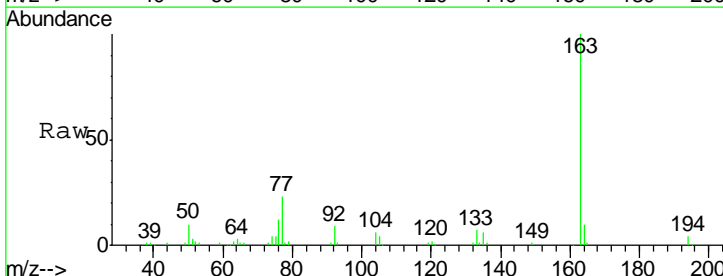
Instrument :
 BNA_G
 ClientSampled :
 SSTD02011

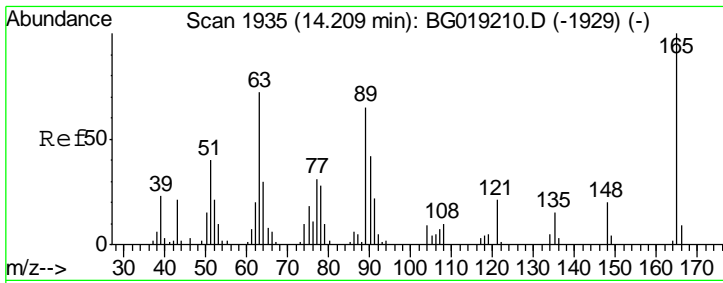
Tgt Ion	Resp	Lower	Upper
65	100		
92	60.1	50.7	76.1
138	82.3	74.9	112.3



#45
 Dimethylphthalate
 Concen: 19.65 ng/ul
 RT: 14.09 min Scan# 1915
 Delta R.T. -0.00 min
 Lab File: BG019219.D
 Acq: 15 Oct 2015 23:39

Tgt Ion	Resp	Lower	Upper
163	100		
194	3.8	3.3	4.9
164	10.1	8.1	12.1

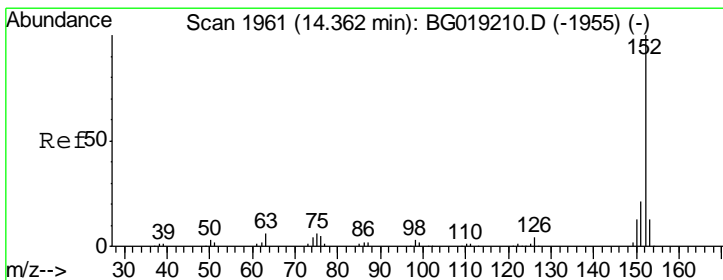
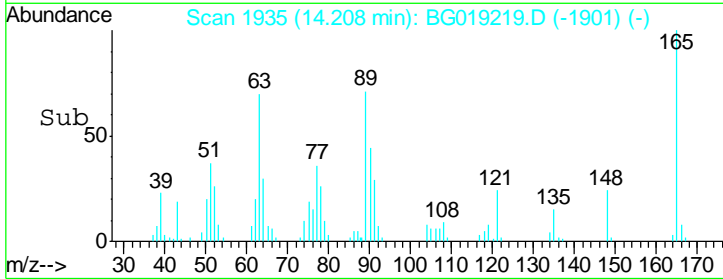
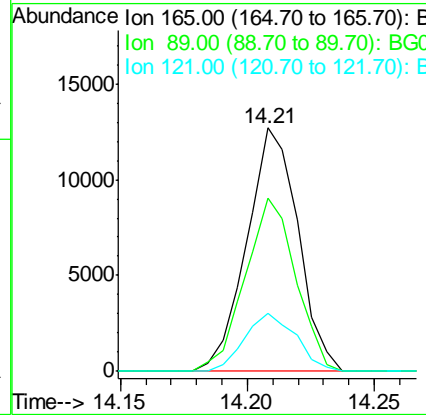
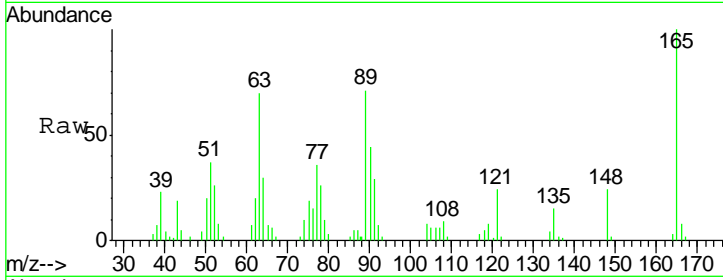




#46
 2,6-Dinitrotoluene
 Concen: 20.73 ng/ul
 RT: 14.21 min Scan# 1935
 Delta R.T. -0.00 min
 Lab File: BG019219.D
 Acq: 15 Oct 2015 23:39

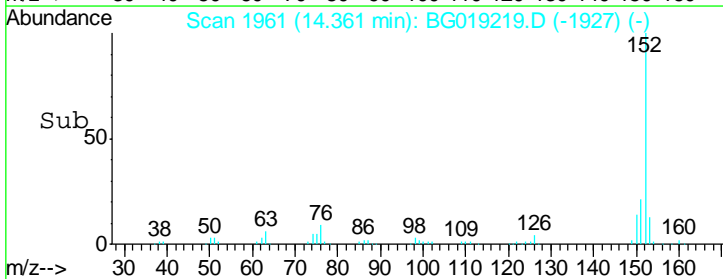
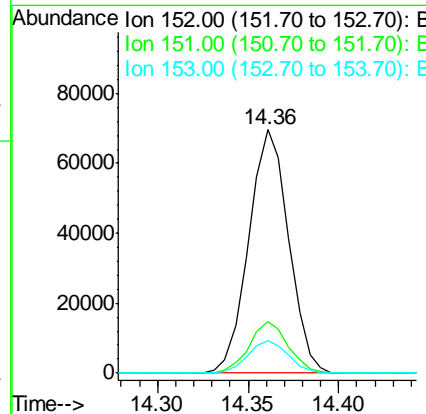
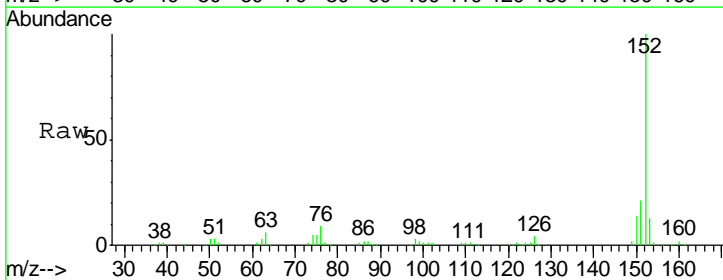
Instrument :
 BNA_G
 ClientSampleID :
 SSTD02011

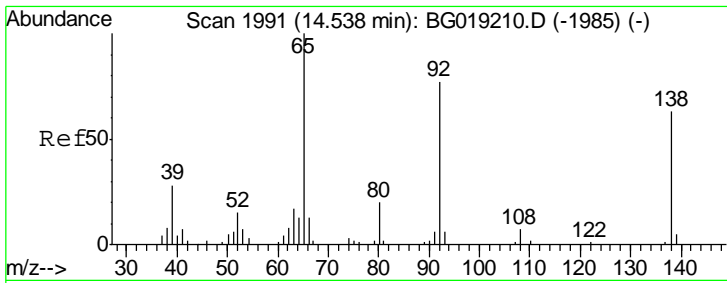
Tgt Ion	Resp	Lower	Upper
165	17842		
89	71.2	45.5	68.3#
121	23.7	16.8	25.2



#48
 Acenaphthylene
 Concen: 19.88 ng/ul
 RT: 14.36 min Scan# 1961
 Delta R.T. -0.00 min
 Lab File: BG019219.D
 Acq: 15 Oct 2015 23:39

Tgt Ion	Resp	Lower	Upper
152	106169		
151	21.2	16.6	25.0
153	13.2	10.5	15.7

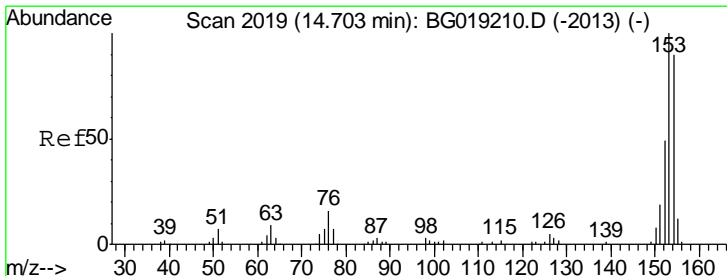
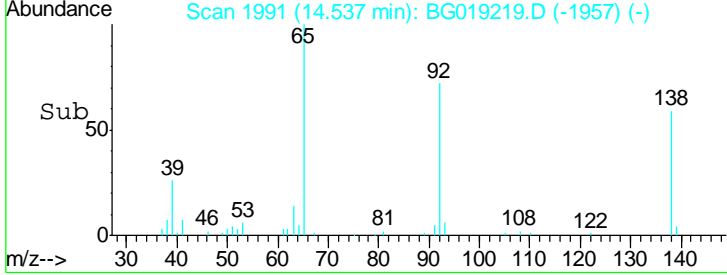
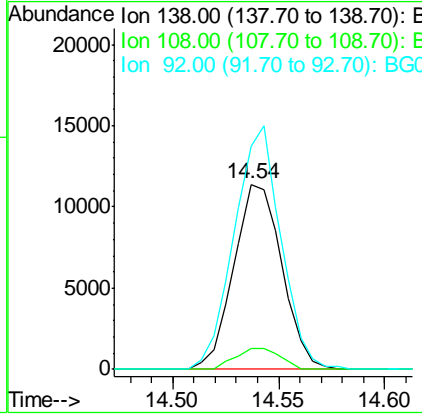
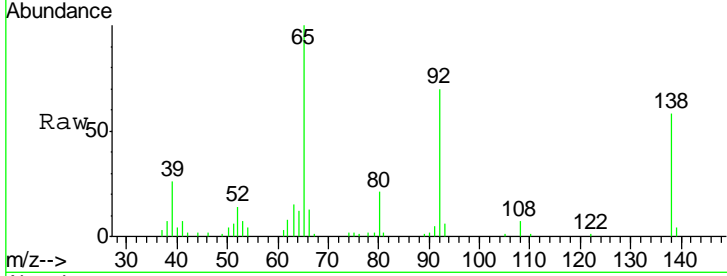




#49
 3-Nitroaniline
 Concen: 21.87 ng/ul
 RT: 14.54 min Scan# 1991
 Delta R.T. -0.00 min
 Lab File: BG019219.D
 Acq: 15 Oct 2015 23:39

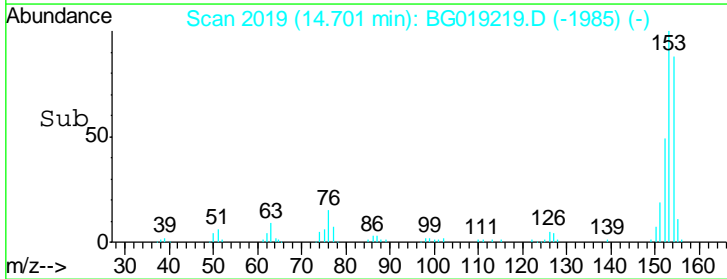
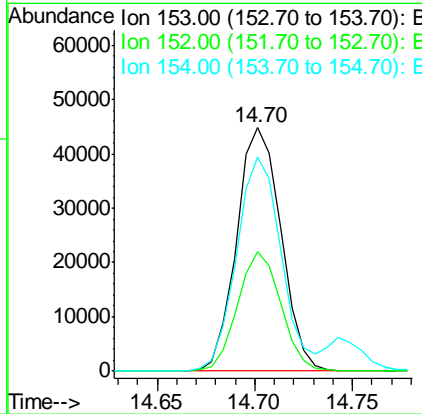
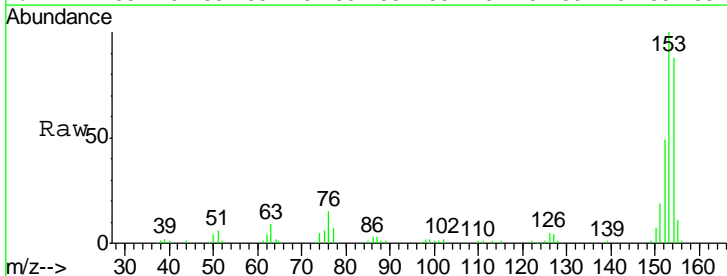
Instrument :
 BNA_G
 ClientSampled :
 SSTD02011

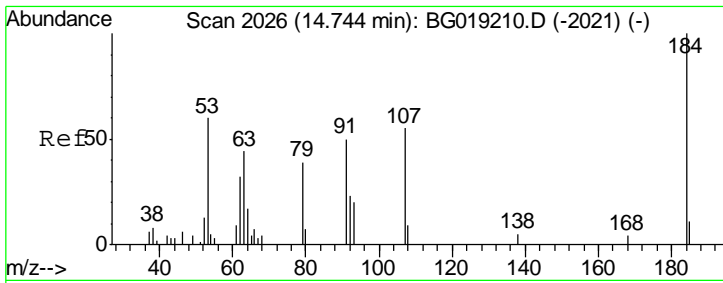
Tgt Ion	Resp	Lower	Upper
138	18041		
138	100		
108	11.2	8.9	13.3
92	120.8	92.4	138.6



#50
 Acenaphthene
 Concen: 19.66 ng/ul
 RT: 14.70 min Scan# 2019
 Delta R.T. -0.00 min
 Lab File: BG019219.D
 Acq: 15 Oct 2015 23:39

Tgt Ion	Resp	Lower	Upper
153	70320		
153	100		
152	49.3	36.2	54.2
154	87.9	67.5	101.3

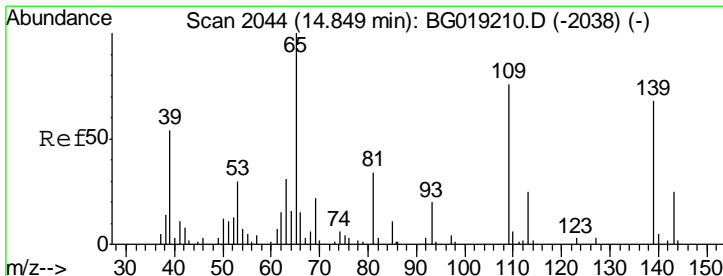
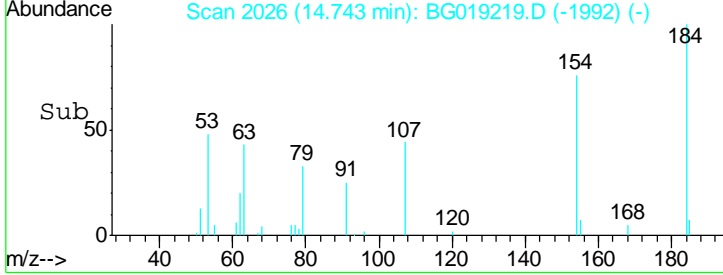
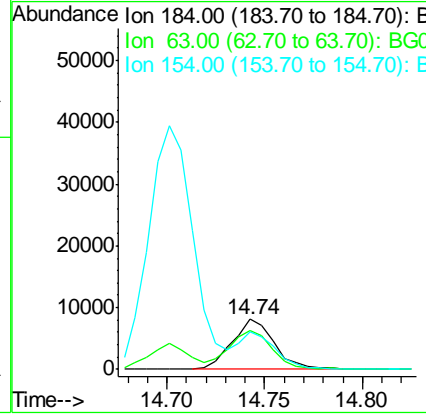
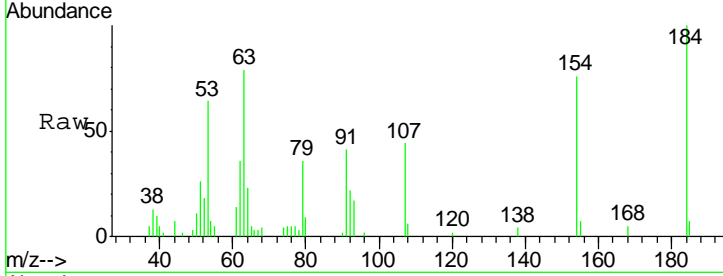




#51
 2,4-Dinitrophenol
 Concen: 24.33 ng/ul
 RT: 14.74 min Scan# 2026
 Delta R.T. -0.00 min
 Lab File: BG019219.D
 Acq: 15 Oct 2015 23:39

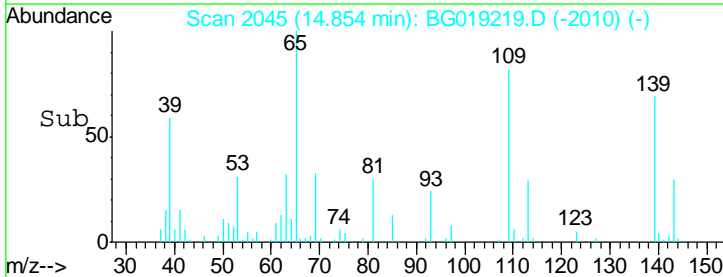
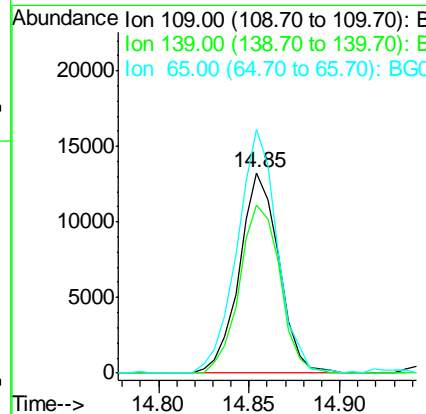
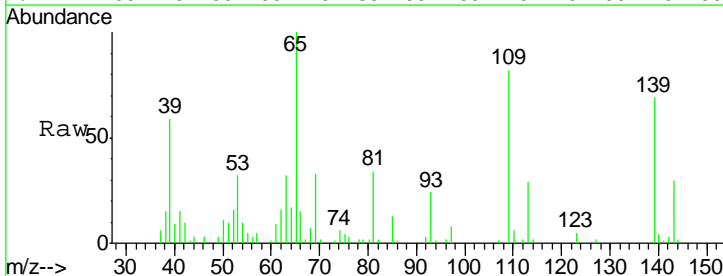
Instrument :
 BNA_G
 ClientSampled :
 SST02011

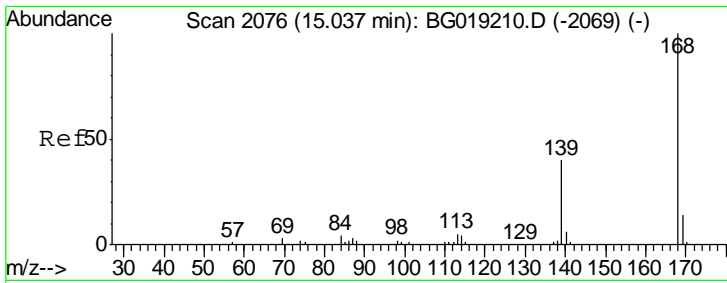
Tgt Ion	Resp	Lower	Upper
184	11985		
63	78.7	51.0	76.4#
154	76.3	56.5	84.7



#53
 4-Nitrophenol
 Concen: 22.72 ng/ul
 RT: 14.85 min Scan# 2045
 Delta R.T. 0.00 min
 Lab File: BG019219.D
 Acq: 15 Oct 2015 23:39

Tgt Ion	Resp	Lower	Upper
109	20010		
139	83.8	97.9	146.9#
65	121.6	117.4	176.0

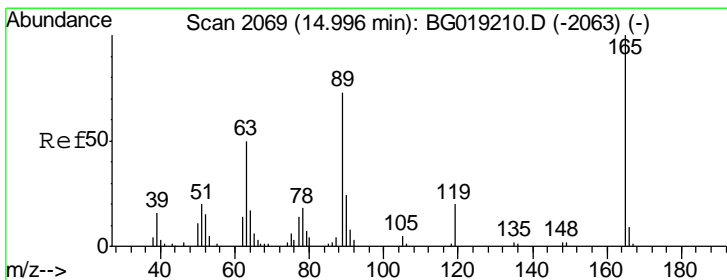
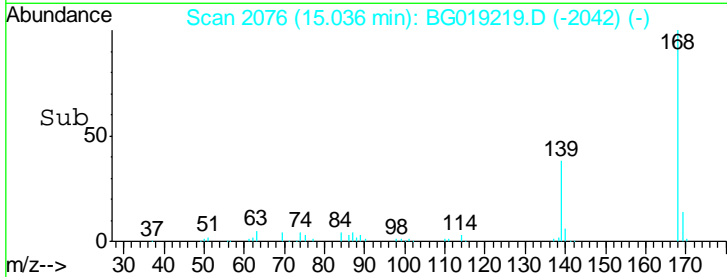
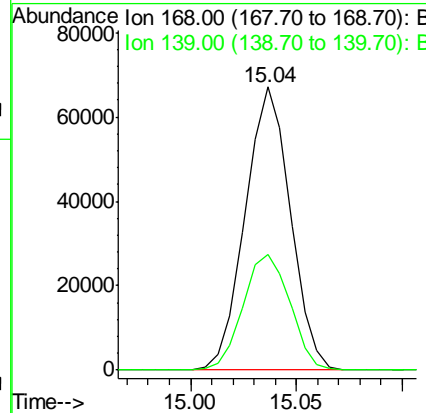
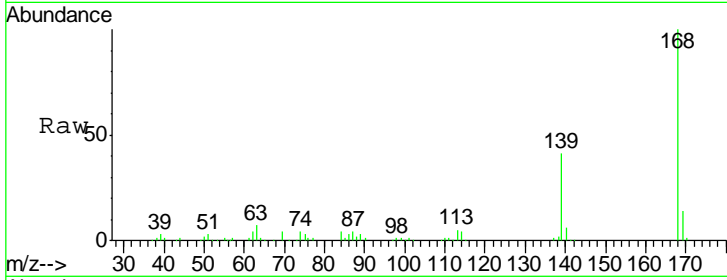




#54
 Dibenzofuran
 Concen: 19.70 ng/ul
 RT: 15.04 min Scan# 2076
 Delta R.T. -0.00 min
 Lab File: BG019219.D
 Acq: 15 Oct 2015 23:39

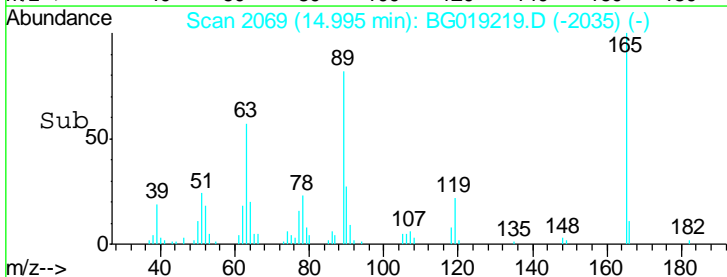
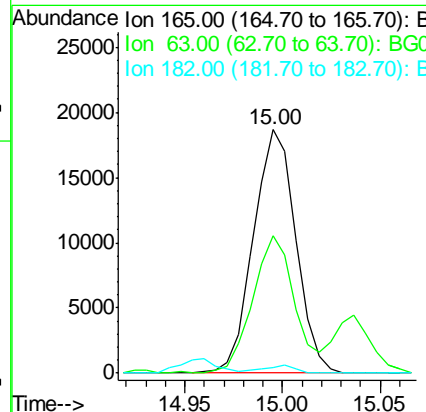
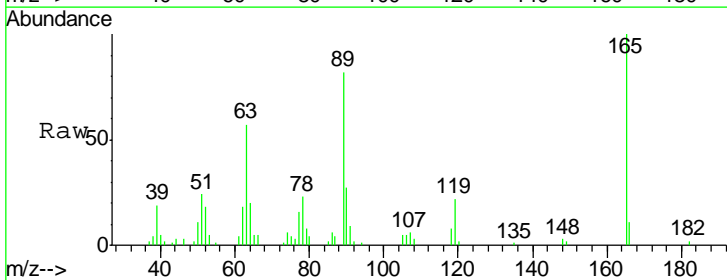
Instrument :
 BNA_G
 ClientSampled :
 SSTD02011

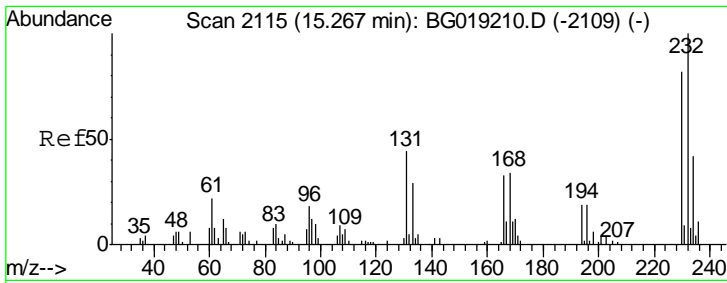
Tgt Ion:168 Resp: 99557
 Ion Ratio Lower Upper
 168 100
 139 40.8 28.5 42.7



#55
 2,4-Dinitrotoluene
 Concen: 20.08 ng/ul
 RT: 15.00 min Scan# 2069
 Delta R.T. -0.00 min
 Lab File: BG019219.D
 Acq: 15 Oct 2015 23:39

Tgt Ion:165 Resp: 28036
 Ion Ratio Lower Upper
 165 100
 63 56.6 39.5 59.3
 182 2.5 2.2 3.2

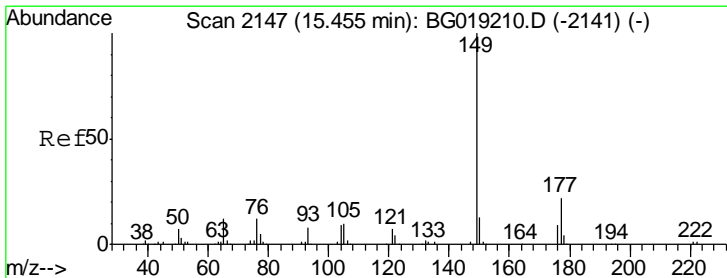
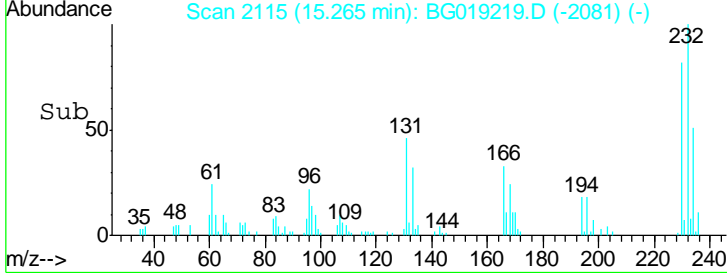
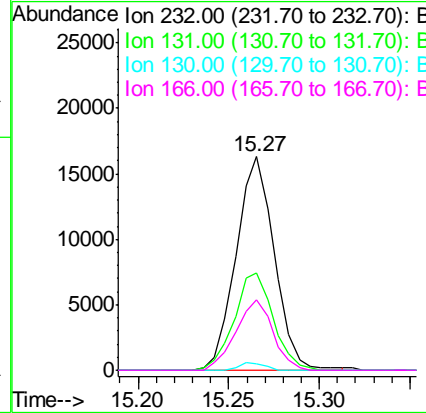
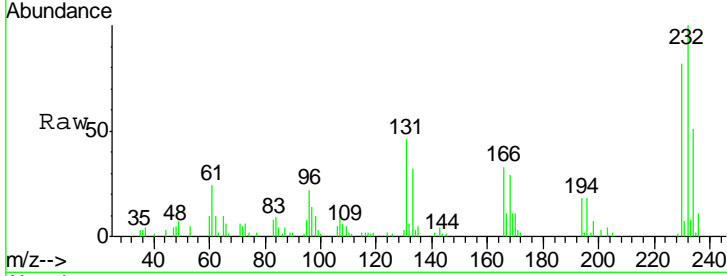




#56
 2,3,4,6-Tetrachlorophenol
 Concen: 22.19 ng/ul
 RT: 15.27 min Scan# 2115
 Delta R.T. -0.00 min
 Lab File: BG019219.D
 Acq: 15 Oct 2015 23:39

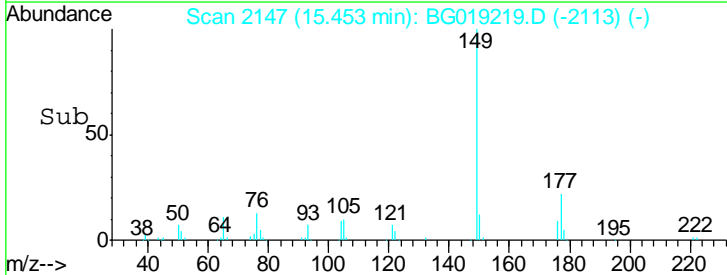
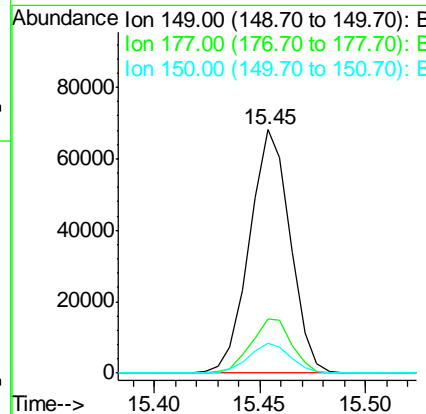
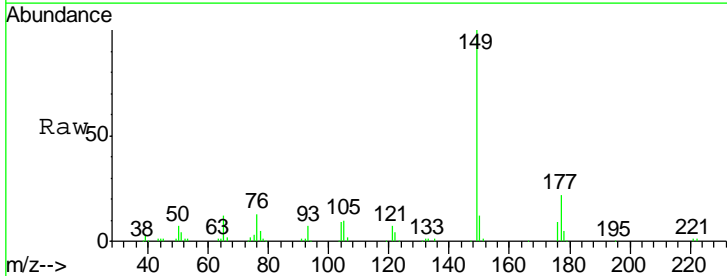
Instrument :
 BNA_G
 ClientSampled :
 SSTD02011

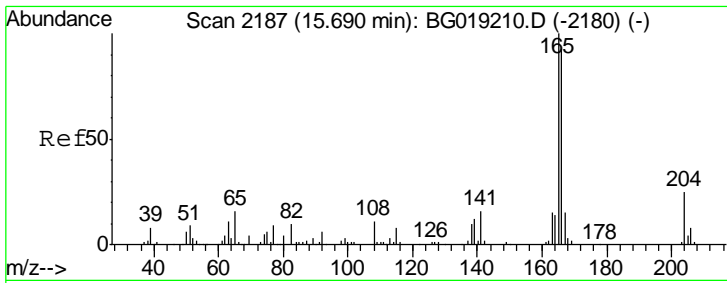
Tgt Ion	Resp	Lower	Upper
232	100		
131	45.6	32.6	49.0
130	3.2	2.2	3.4
166	33.1	23.1	34.7



#57
 Diethylphthalate
 Concen: 19.42 ng/ul
 RT: 15.45 min Scan# 2147
 Delta R.T. -0.00 min
 Lab File: BG019219.D
 Acq: 15 Oct 2015 23:39

Tgt Ion	Resp	Lower	Upper
149	100		
177	22.4	17.4	26.0
150	12.2	10.0	15.0

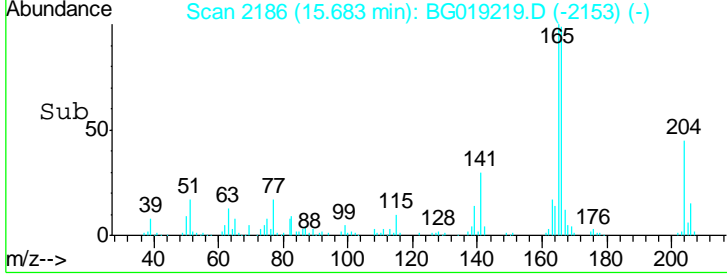
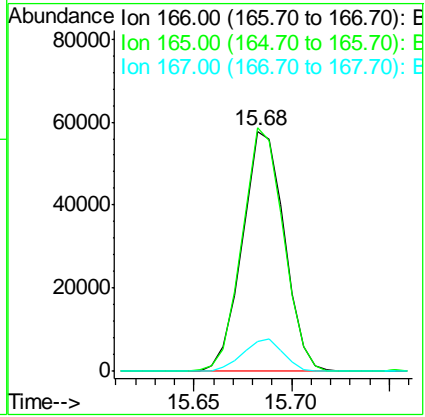
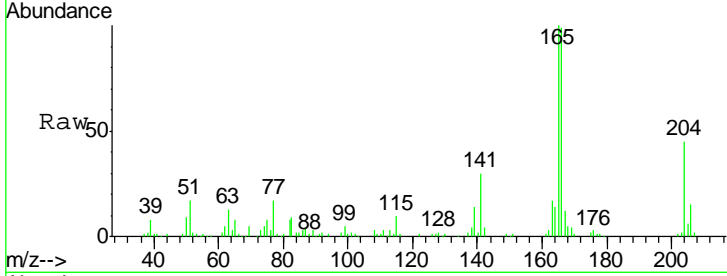




#59
 Fluorene
 Concen: 19.87 ng/ul
 RT: 15.68 min Scan# 2186
 Delta R.T. -0.01 min
 Lab File: BG019219.D
 Acq: 15 Oct 2015 23:39

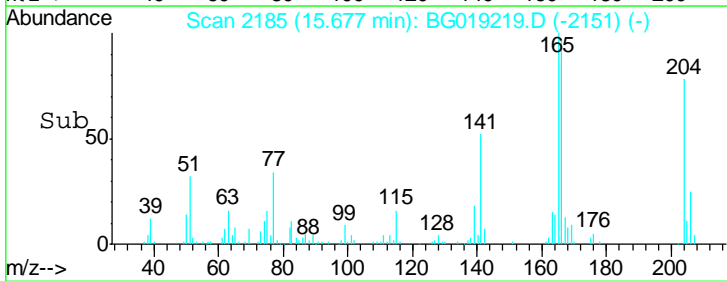
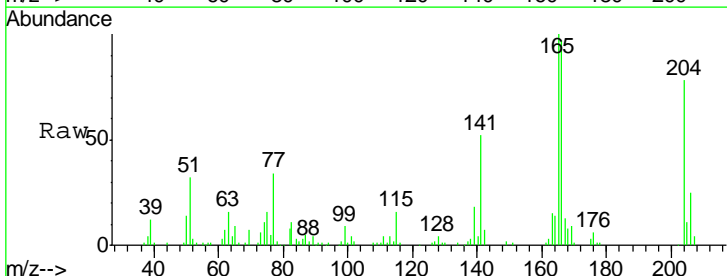
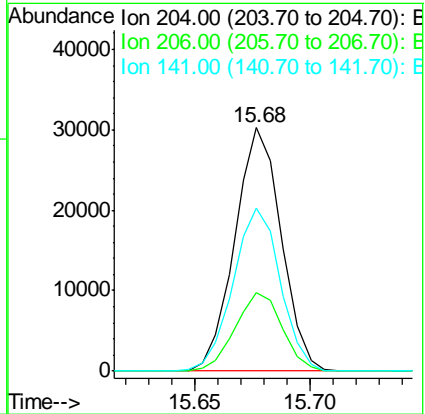
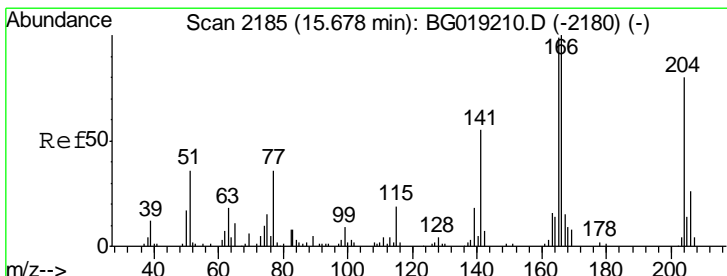
Instrument :
 BNA_G
 ClientSampled :
 SSTD02011

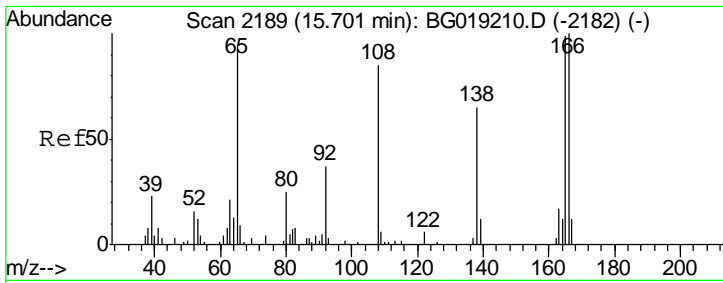
Tgt Ion	Resp	Lower	Upper
166	100		
165	101.4	77.7	116.5
167	12.4	10.4	15.6



#60
 4-Chlorophenyl-phenylether
 Concen: 18.98 ng/ul
 RT: 15.68 min Scan# 2185
 Delta R.T. -0.00 min
 Lab File: BG019219.D
 Acq: 15 Oct 2015 23:39

Tgt Ion	Resp	Lower	Upper
204	100		
206	32.2	26.4	39.6
141	66.8	44.4	66.6#

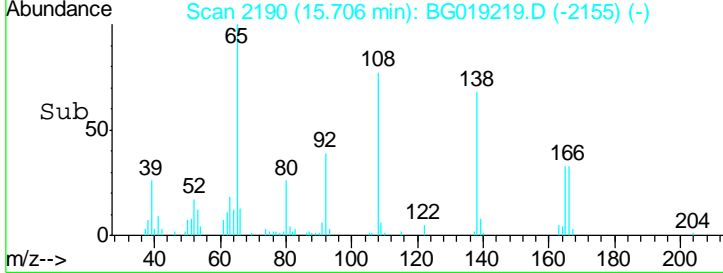
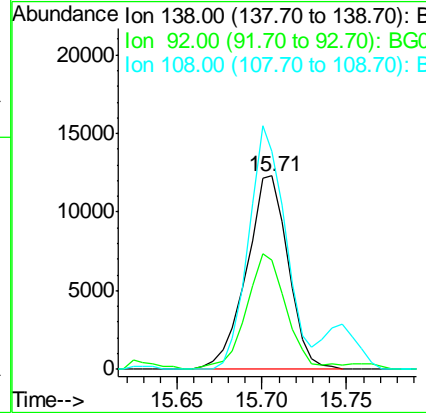
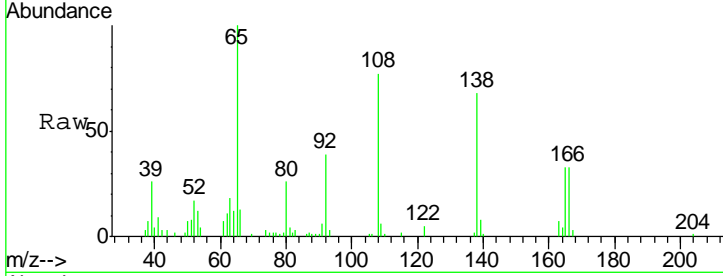




#61
 4-Nitroaniline
 Concen: 21.58 ng/ul
 RT: 15.71 min Scan# 2190
 Delta R.T. 0.00 min
 Lab File: BG019219.D
 Acq: 15 Oct 2015 23:39

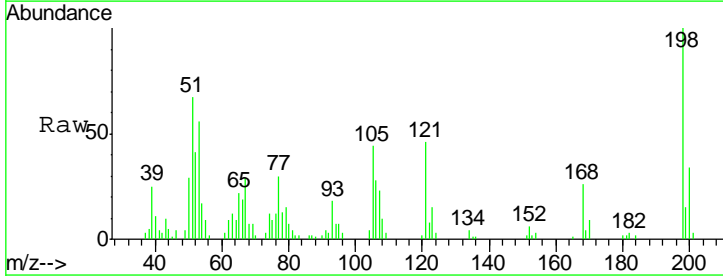
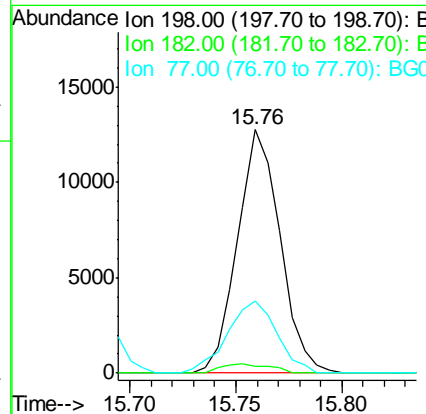
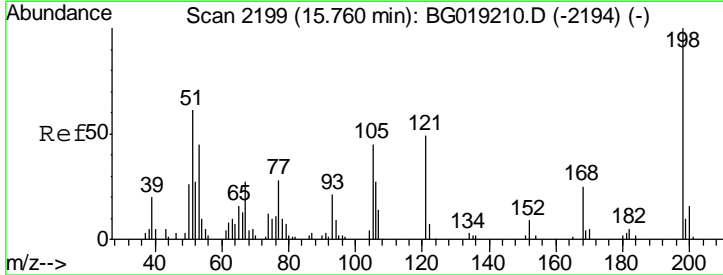
Instrument :
 BNA_G
 ClientSampled :
 SSTD02011

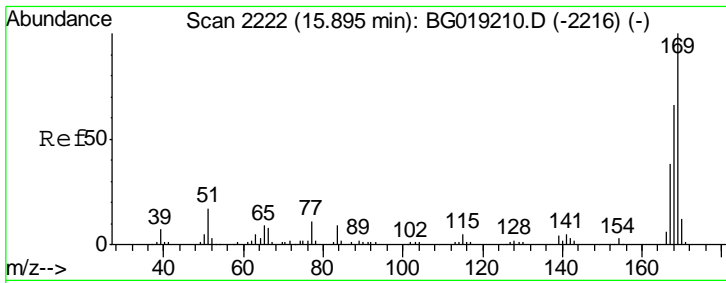
Tgt Ion	Resp	Lower	Upper
138	100		
92	56.5	47.4	71.2
108	112.6	62.8	94.2#



#64
 4,6-Dinitro-2-methylphenol
 Concen: 21.65 ng/ul
 RT: 15.76 min Scan# 2199
 Delta R.T. -0.00 min
 Lab File: BG019219.D
 Acq: 15 Oct 2015 23:39

Tgt Ion	Resp	Lower	Upper
198	100		
182	3.0	4.3	6.5#
77	29.7	20.2	30.2

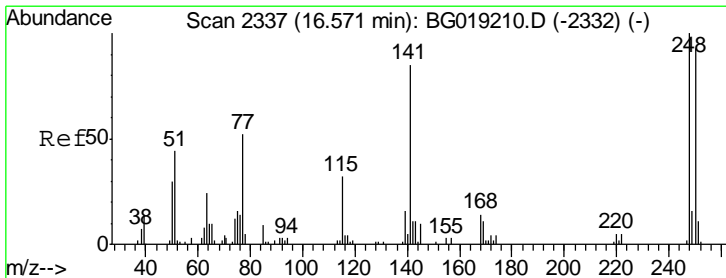
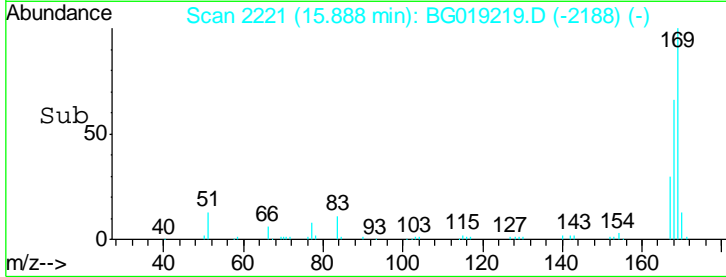
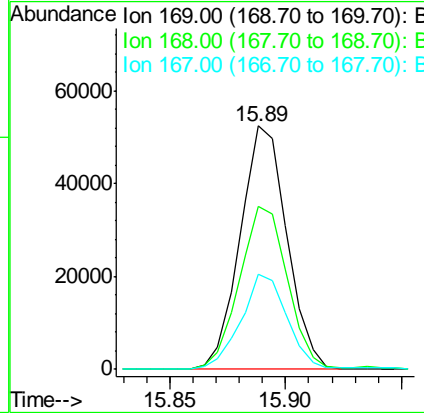
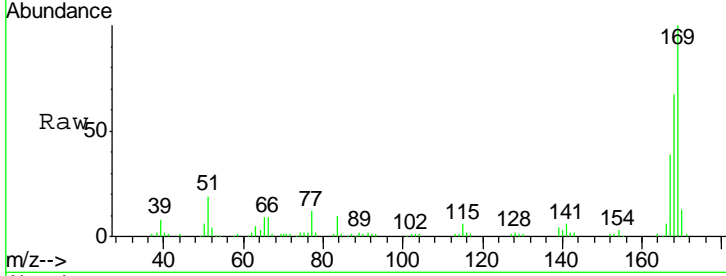




#65
 N-Nitrosodiphenylamine
 Concen: 20.28 ng/ul
 RT: 15.89 min Scan# 2221
 Delta R.T. -0.01 min
 Lab File: BG019219.D
 Acq: 15 Oct 2015 23:39

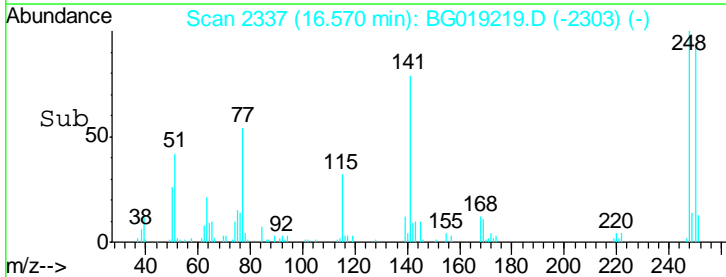
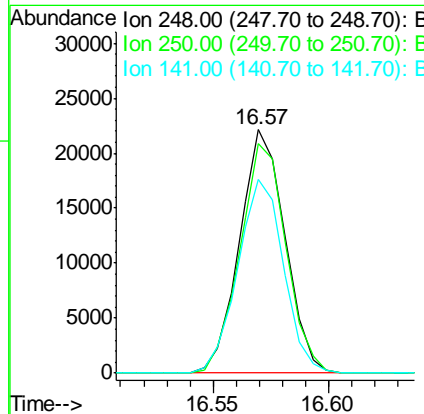
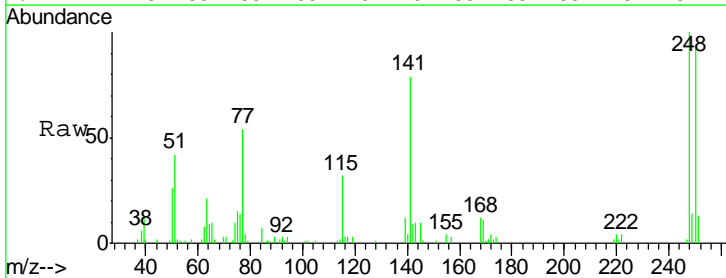
Instrument :
 BNA_G
 ClientSampled :
 SSTD02011

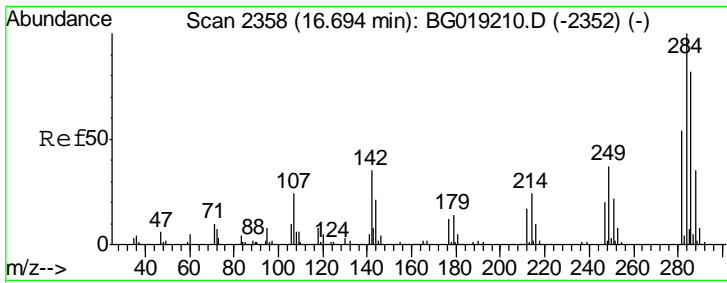
Tgt Ion	Resp	Lower	Upper
169	100		
168	66.7	58.2	87.4
167	38.9	30.9	46.3



#66
 4-Bromophenyl-phenylether
 Concen: 20.25 ng/ul
 RT: 16.57 min Scan# 2337
 Delta R.T. -0.00 min
 Lab File: BG019219.D
 Acq: 15 Oct 2015 23:39

Tgt Ion	Resp	Lower	Upper
248	100		
250	94.0	79.1	118.7
141	79.4	55.1	82.7

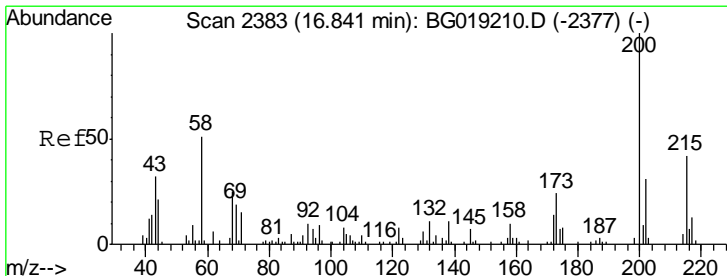
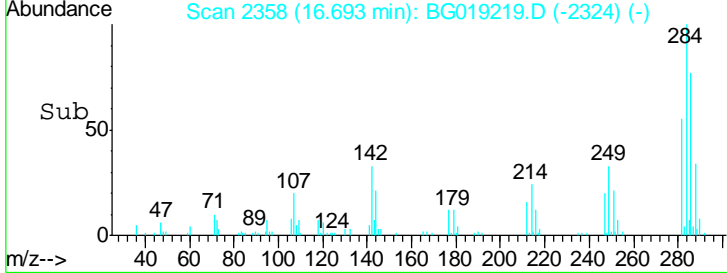
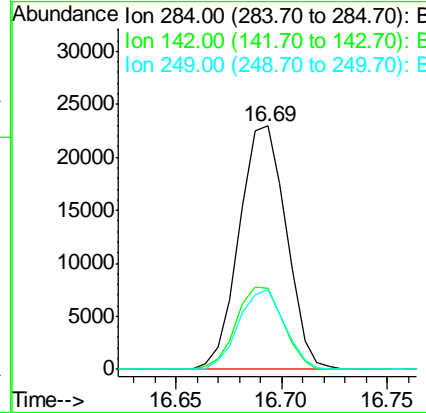
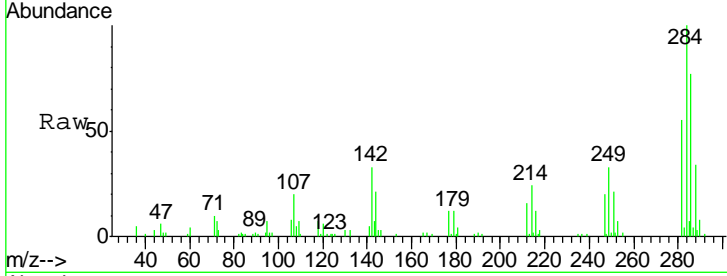




#67
 Hexachlorobenzene
 Concen: 20.43 ng/ul
 RT: 16.69 min Scan# 2358
 Delta R.T. -0.00 min
 Lab File: BG019219.D
 Acq: 15 Oct 2015 23:39

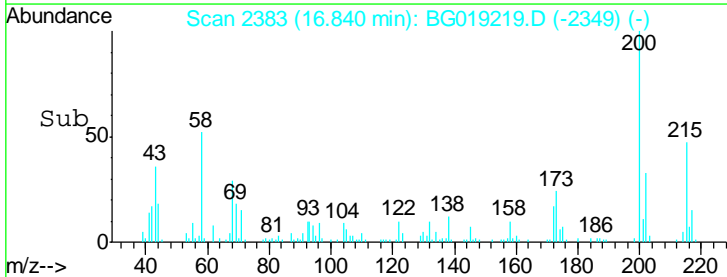
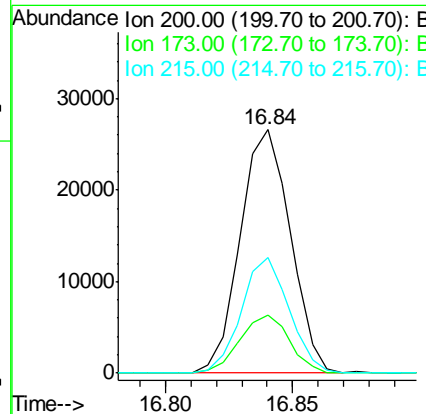
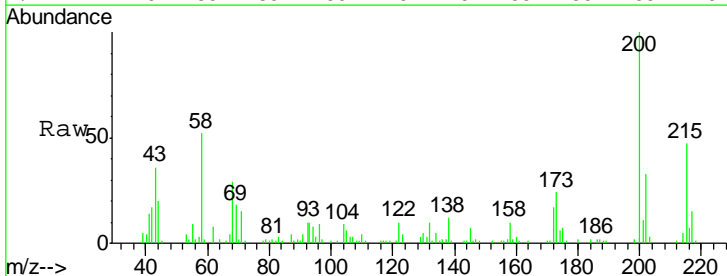
Instrument :
 BNA_G
 ClientSampleId :
 SSTD02011

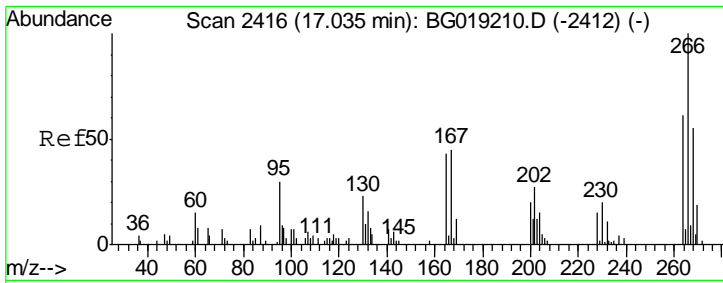
Tgt Ion	Resp	Lower	Upper
284	35455		
142	33.4	25.4	38.0
249	32.7	25.6	38.4



#68
 Atrazine
 Concen: 20.82 ng/ul
 RT: 16.84 min Scan# 2383
 Delta R.T. -0.00 min
 Lab File: BG019219.D
 Acq: 15 Oct 2015 23:39

Tgt Ion	Resp	Lower	Upper
200	36451		
173	23.8	18.5	27.7
215	47.3	35.9	53.9

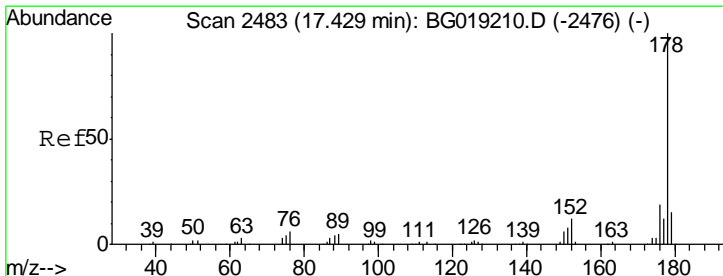
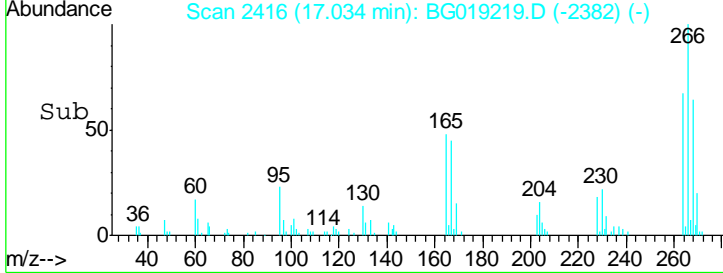
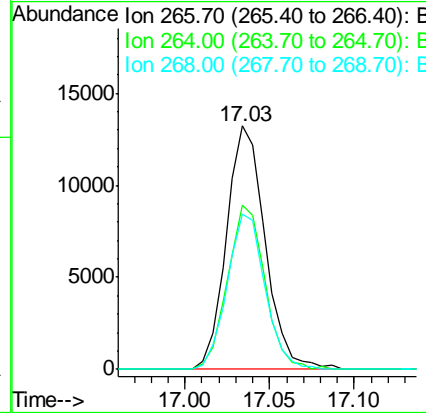
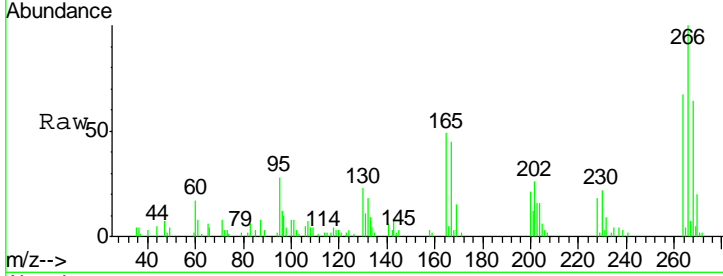




#69
 Pentachlorophenol
 Concen: 23.55 ng/ul
 RT: 17.03 min Scan# 2416
 Delta R.T. -0.00 min
 Lab File: BG019219.D
 Acq: 15 Oct 2015 23:39

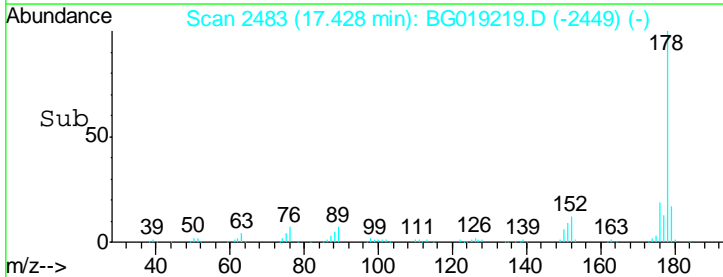
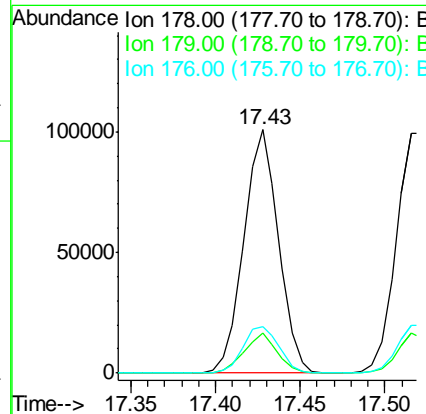
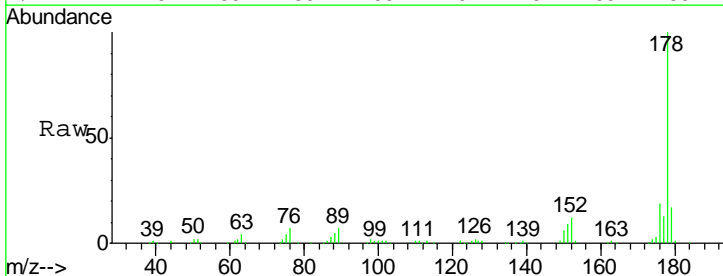
Instrument :
 BNA_G
 ClientSampled :
 SSTD02011

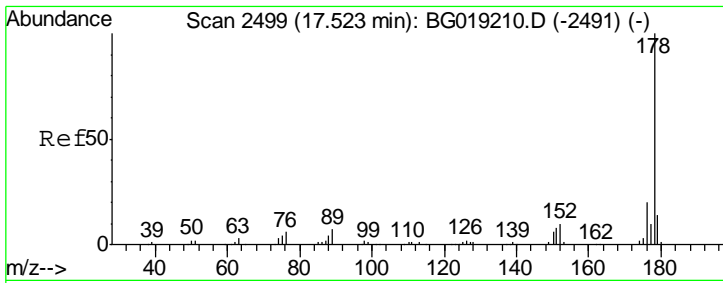
Tgt Ion	Resp	Lower	Upper
266	21010		
264	100	49.0	73.6
268	63.7	55.6	83.4



#70
 Phenanthrene
 Concen: 19.55 ng/ul
 RT: 17.43 min Scan# 2483
 Delta R.T. -0.00 min
 Lab File: BG019219.D
 Acq: 15 Oct 2015 23:39

Tgt Ion	Resp	Lower	Upper
178	144628		
179	100	12.5	18.7
176	19.2	15.4	23.0

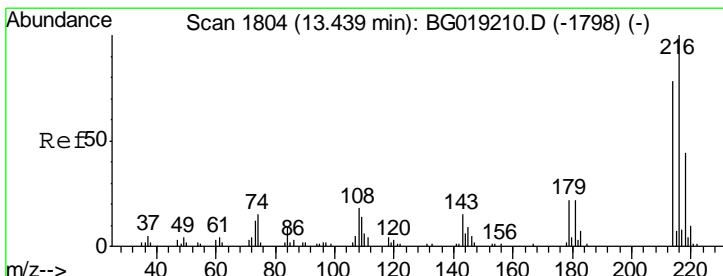
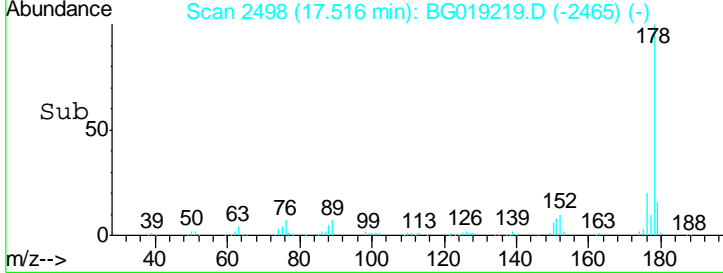
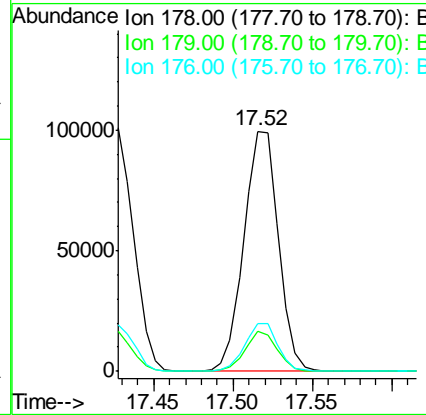
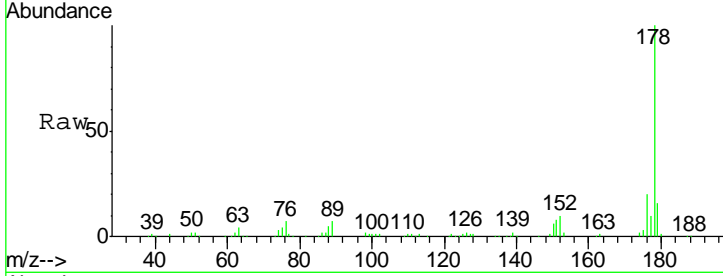




#72
 Anthracene
 Concen: 20.02 ng/ul
 RT: 17.52 min Scan# 2498
 Delta R.T. -0.01 min
 Lab File: BG019219.D
 Acq: 15 Oct 2015 23:39

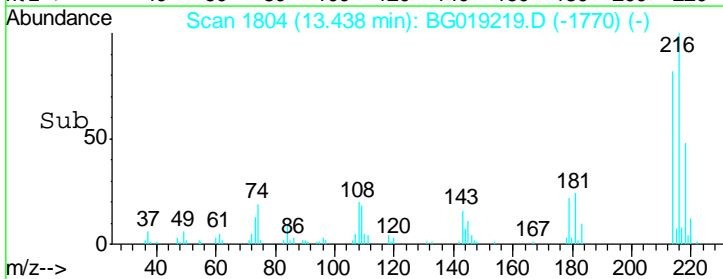
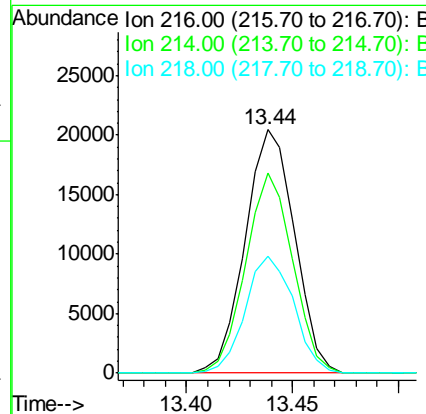
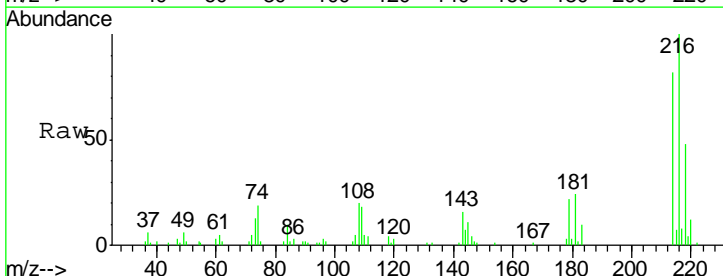
Instrument :
 BNA_G
 ClientSampled :
 SST02011

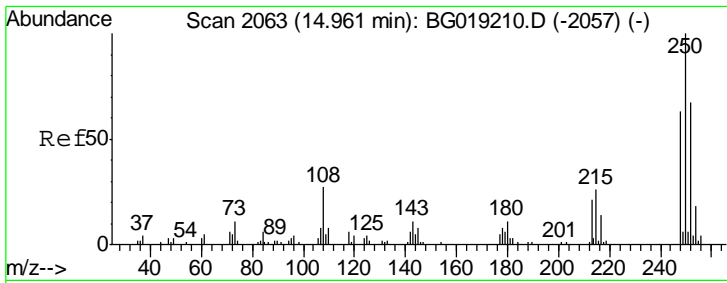
Tgt Ion	Resp	Lower	Upper
178	150441		
179	16.5	12.2	18.4
176	19.7	15.0	22.6



#73
 1,2,3,4-Tetrachlorobenzene
 Concen: 20.54 ng/uL
 RT: 13.44 min Scan# 1804
 Delta R.T. -0.00 min
 Lab File: BG019219.D
 Acq: 15 Oct 2015 23:39

Tgt Ion	Resp	Lower	Upper
216	33165		
214	82.1	64.5	96.7
218	48.2	40.4	60.6

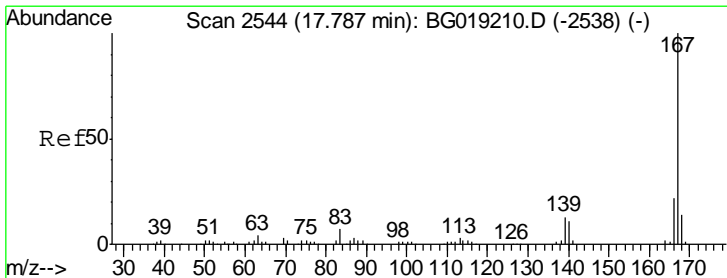
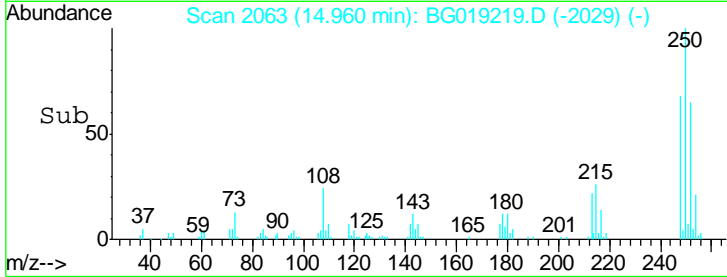
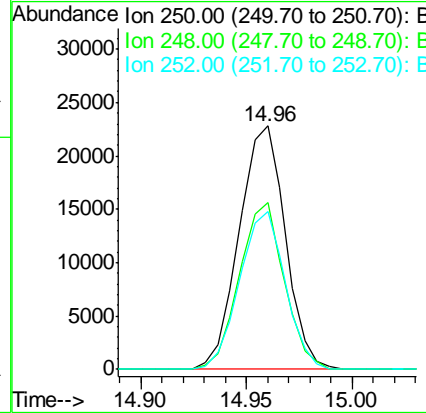
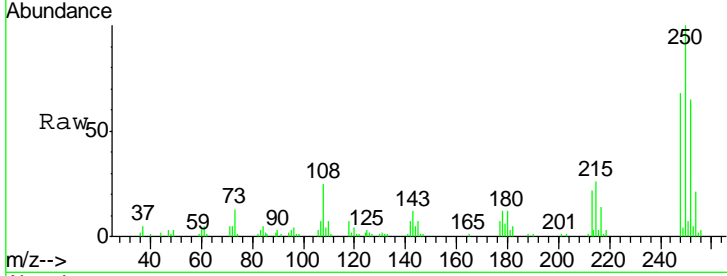




#74
 Pentachlorobenzene
 Concen: 19.49 ng/uL
 RT: 14.96 min Scan# 2063
 Delta R.T. -0.00 min
 Lab File: BG019219.D
 Acq: 15 Oct 2015 23:39

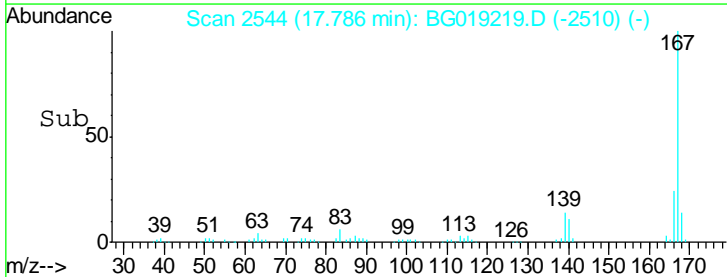
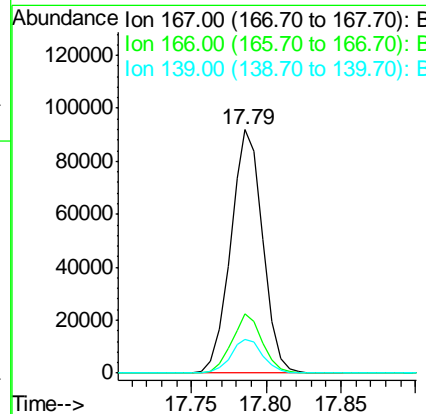
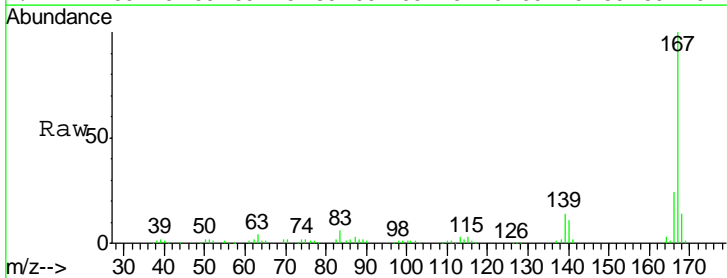
Instrument :
 BNA_G
 ClientSampleId :
 SST02011

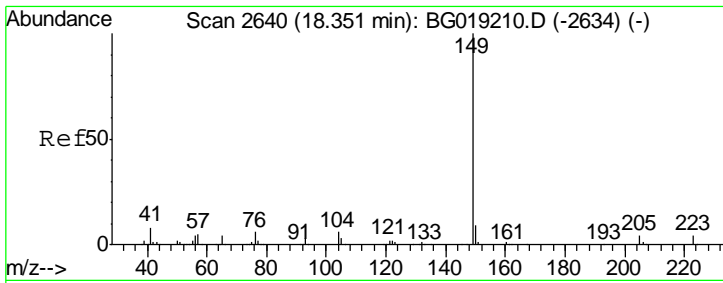
Tgt Ion	Resp	Lower	Upper
250	34464		
248	68.4	47.4	71.2
252	65.1	50.2	75.4



#75
 Carbazole
 Concen: 21.22 ng/uL
 RT: 17.79 min Scan# 2544
 Delta R.T. -0.00 min
 Lab File: BG019219.D
 Acq: 15 Oct 2015 23:39

Tgt Ion	Resp	Lower	Upper
167	137491		
166	24.2	18.6	27.8
139	13.9	9.8	14.8

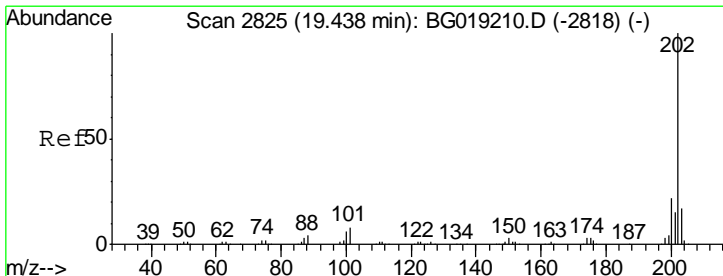
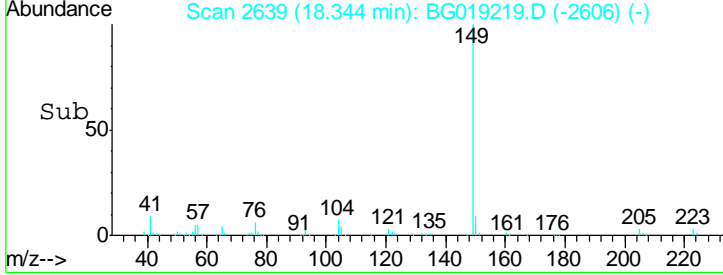
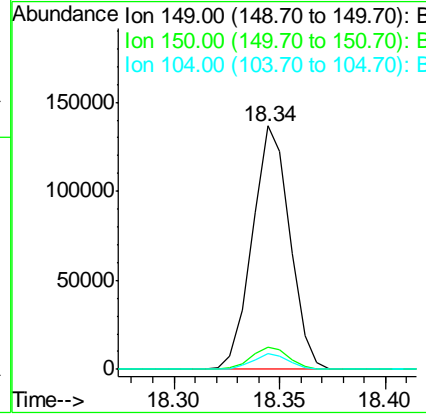
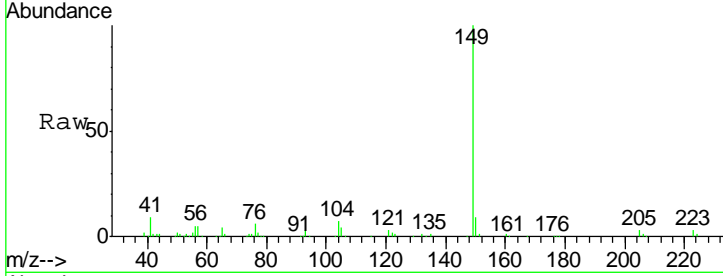




#76
 Di-n-butylphthalate
 Concen: 19.71 ng/ul
 RT: 18.34 min Scan# 2639
 Delta R.T. -0.01 min
 Lab File: BG019219.D
 Acq: 15 Oct 2015 23:39

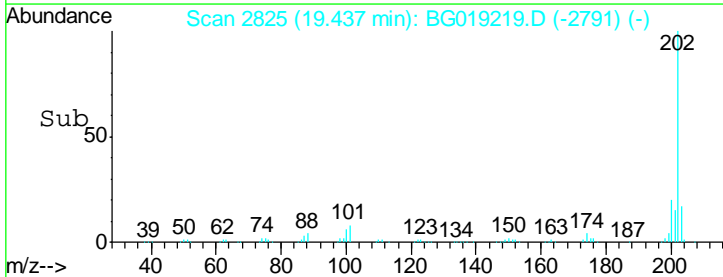
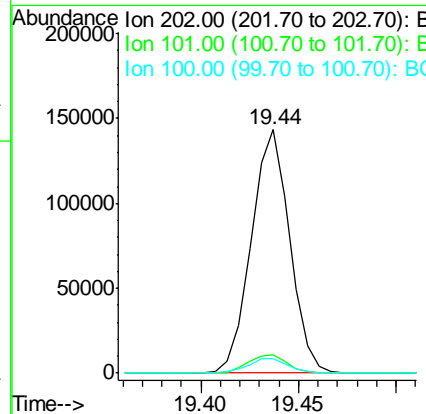
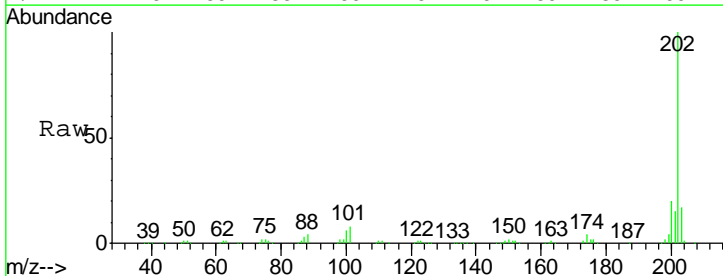
Instrument :
 BNA_G
 ClientSampled :
 SSTD02011

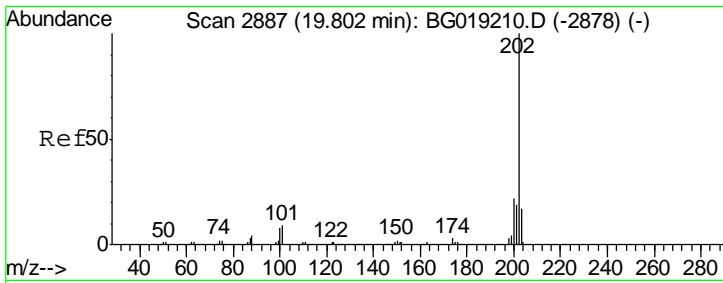
Tgt Ion	Resp	Lower	Upper
149	168137		
150	9.3	7.1	10.7
104	6.6	3.9	5.9#



#77
 Fluoranthene
 Concen: 21.02 ng/ul
 RT: 19.44 min Scan# 2825
 Delta R.T. -0.00 min
 Lab File: BG019219.D
 Acq: 15 Oct 2015 23:39

Tgt Ion	Resp	Lower	Upper
202	194639		
101	7.7	9.0	13.4#
100	6.0	6.9	10.3#

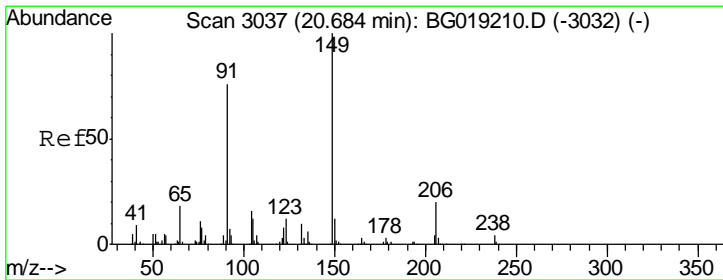
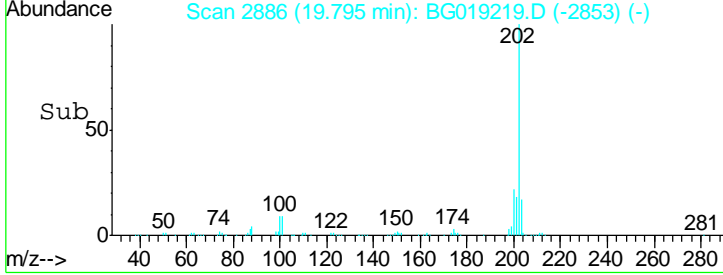
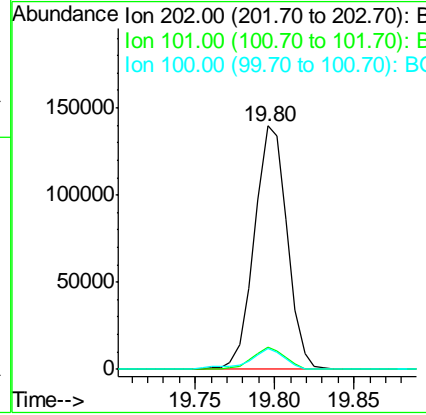
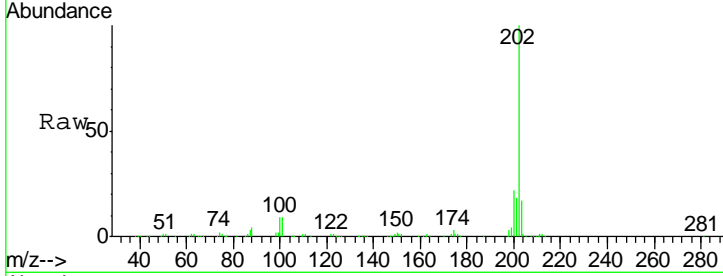




#80
 Pyrene
 Concen: 19.74 ng/ul
 RT: 19.80 min Scan# 2886
 Delta R.T. -0.01 min
 Lab File: BG019219.D
 Acq: 15 Oct 2015 23:39

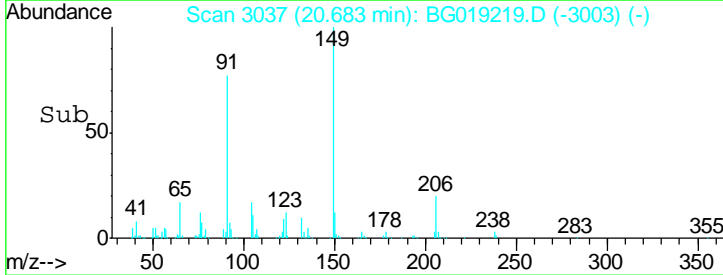
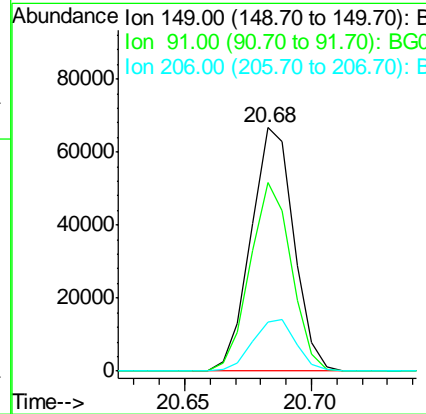
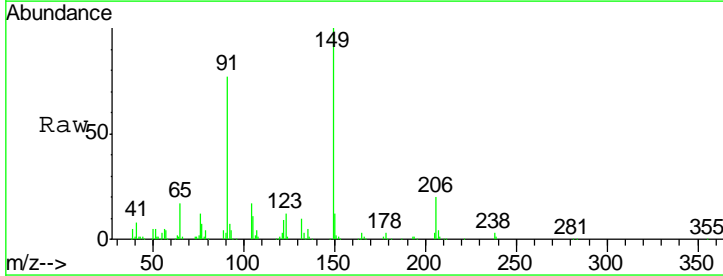
Instrument :
 BNA_G
 ClientSampled :
 SSTD02011

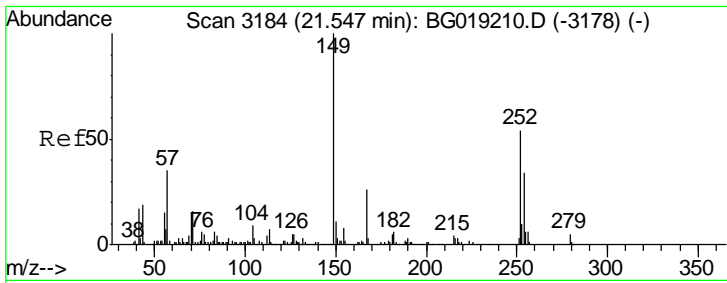
Tgt Ion	Resp	Lower	Upper
202	100		
101	8.9	10.2	15.2#
100	8.8	8.5	12.7



#81
 Butylbenzylphthalate
 Concen: 21.35 ng/ul
 RT: 20.68 min Scan# 3037
 Delta R.T. -0.00 min
 Lab File: BG019219.D
 Acq: 15 Oct 2015 23:39

Tgt Ion	Resp	Lower	Upper
149	100		
91	77.3	59.1	88.7
206	20.2	17.9	26.9

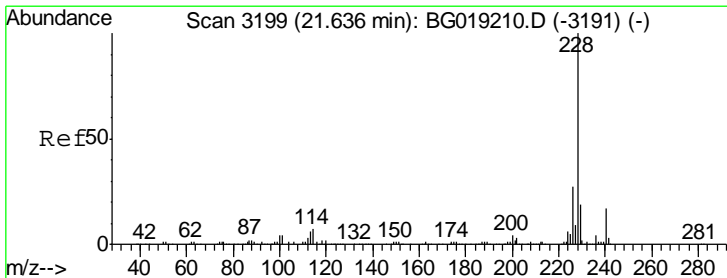
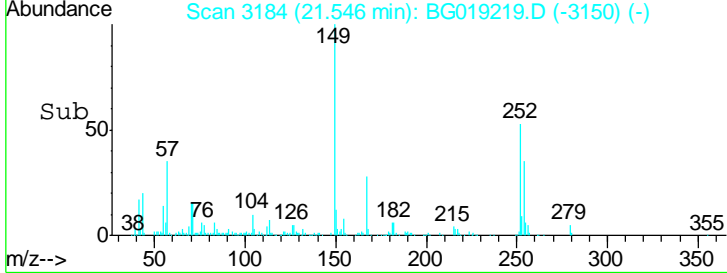
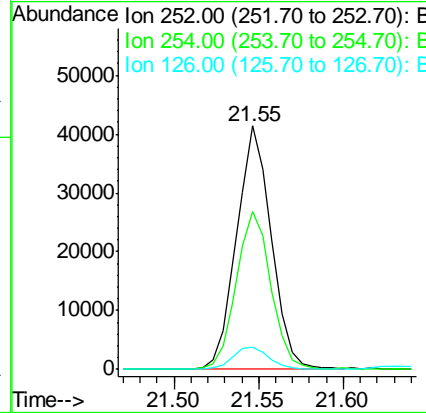
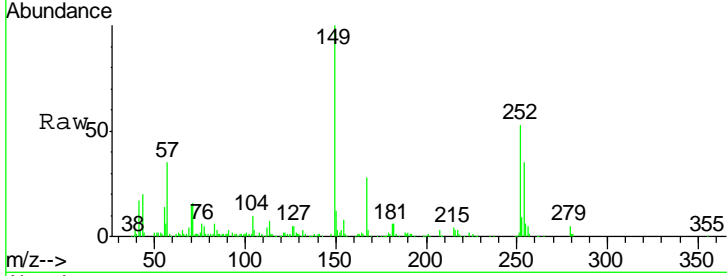




#82
 3,3'-Dichlorobenzidine
 Concen: 18.89 ng/ul
 RT: 21.55 min Scan# 3184
 Delta R.T. -0.00 min
 Lab File: BG019219.D
 Acq: 15 Oct 2015 23:39

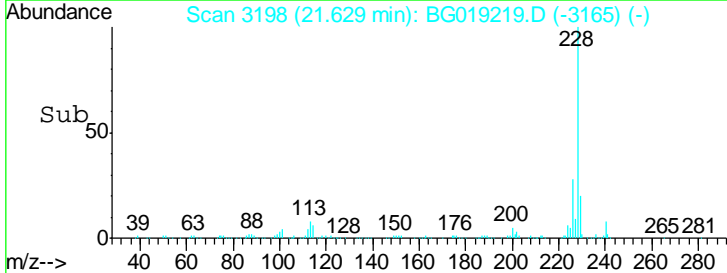
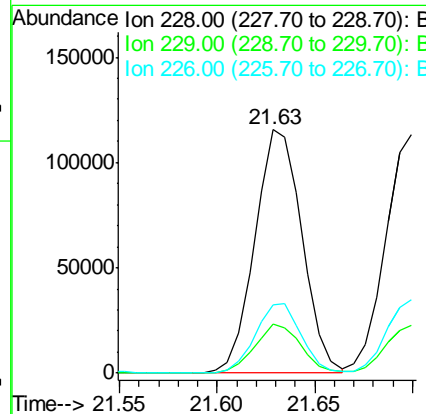
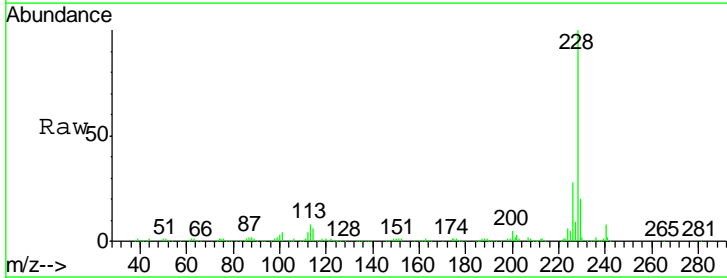
Instrument :
 BNA_G
 ClientSampled :
 SSTD02011

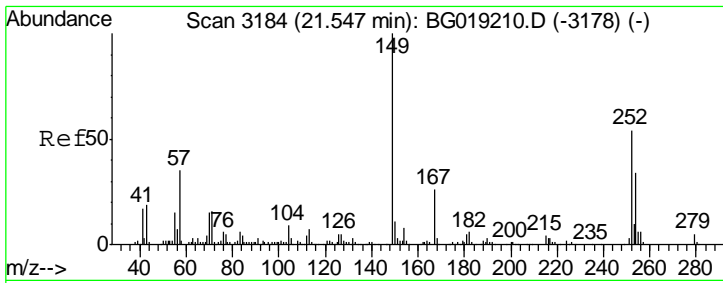
Tgt Ion	Resp	Lower	Upper
252	59057		
254	64.9	51.4	77.0
126	8.9	7.9	11.9



#83
 Benzo(a)anthracene
 Concen: 19.92 ng/ul
 RT: 21.63 min Scan# 3198
 Delta R.T. -0.01 min
 Lab File: BG019219.D
 Acq: 15 Oct 2015 23:39

Tgt Ion	Resp	Lower	Upper
228	192605		
229	20.1	16.6	24.8
226	28.0	22.8	34.2

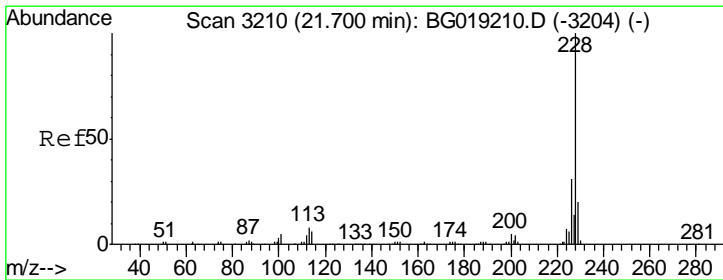
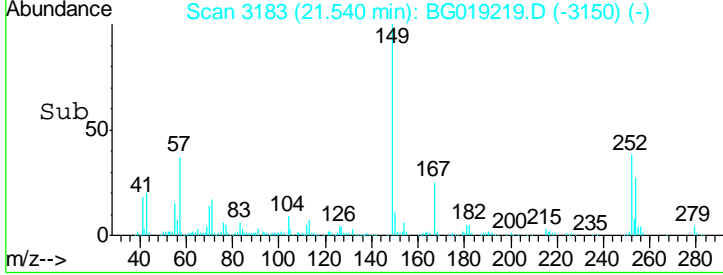
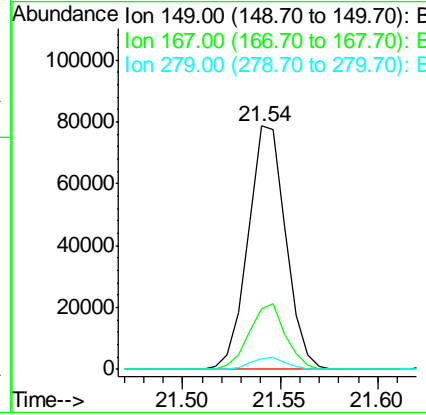
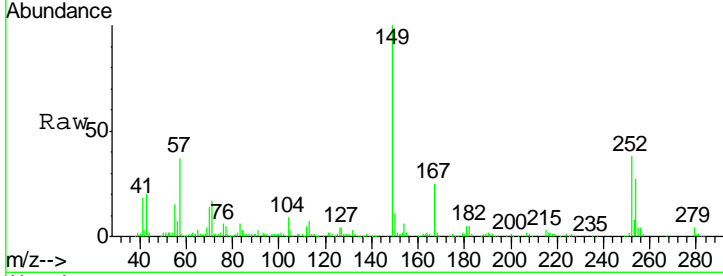




#84
 Bis(2-ethylhexyl)phthalate
 Concen: 20.58 ng/ul
 RT: 21.54 min Scan# 3183
 Delta R.T. -0.01 min
 Lab File: BG019219.D
 Acq: 15 Oct 2015 23:39

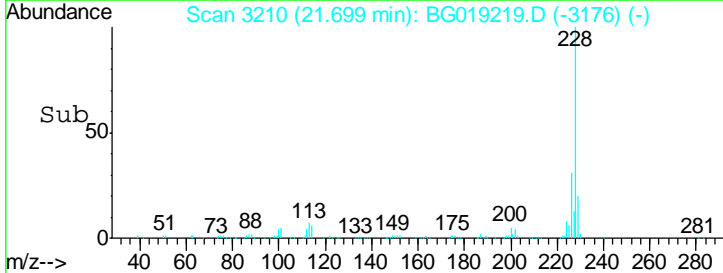
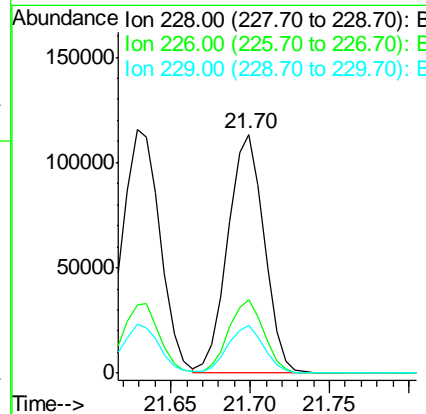
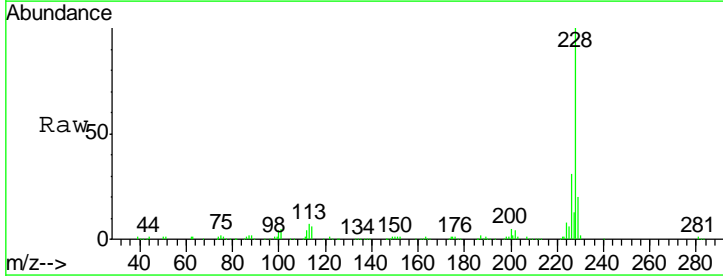
Instrument :
 BNA_G
 ClientSampled :
 SSTD02011

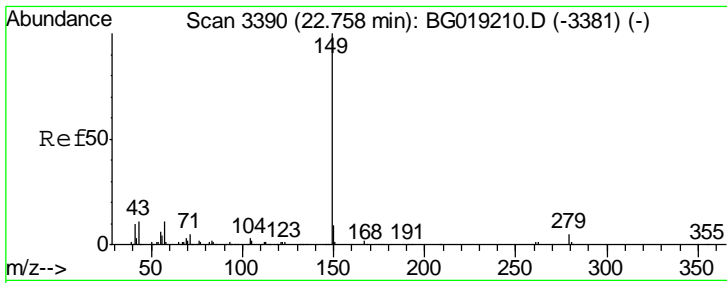
Tgt Ion	Resp	Lower	Upper
149	105090		
167	24.9	22.8	34.2
279	4.5	3.3	4.9



#85
 Chrysene
 Concen: 19.70 ng/ul
 RT: 21.70 min Scan# 3210
 Delta R.T. -0.00 min
 Lab File: BG019219.D
 Acq: 15 Oct 2015 23:39

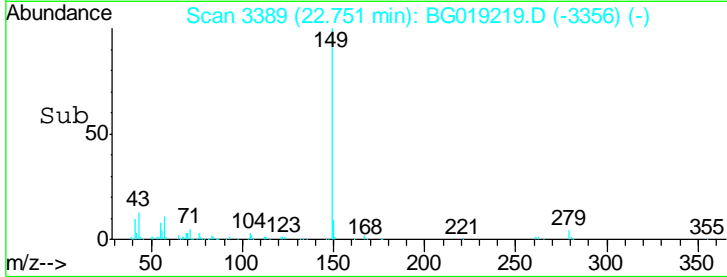
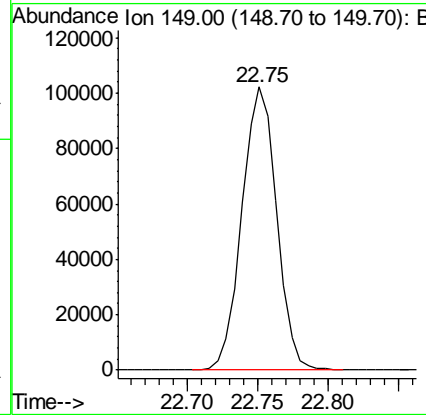
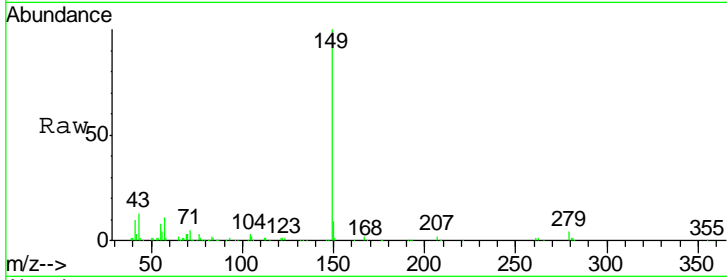
Tgt Ion	Resp	Lower	Upper
228	180108		
226	30.9	24.2	36.2
229	19.8	15.6	23.4





#87
 Di-n-octyl phthalate
 Concen: 20.70 ng/ul
 RT: 22.75 min Scan# 3389
 Delta R.T. -0.01 min
 Lab File: BG019219.D
 Acq: 15 Oct 2015 23:39
 Tgt Ion:149 Resp: 176099

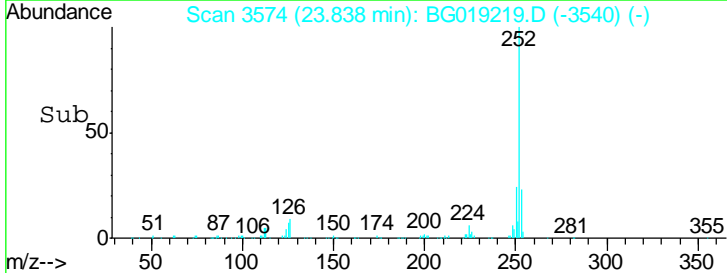
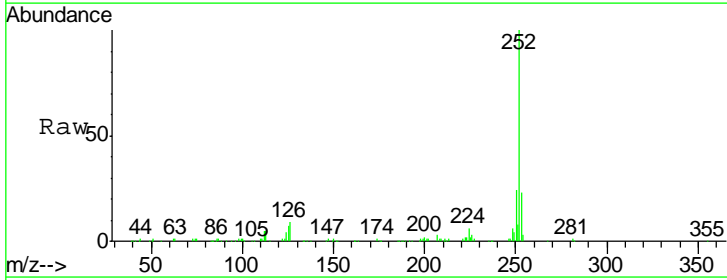
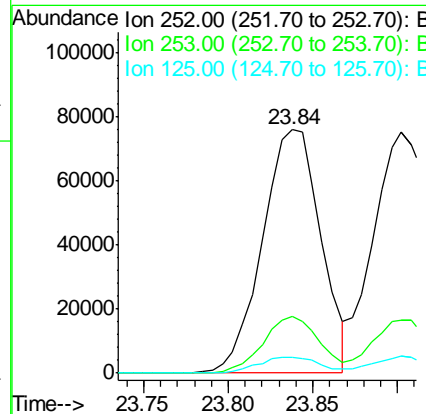
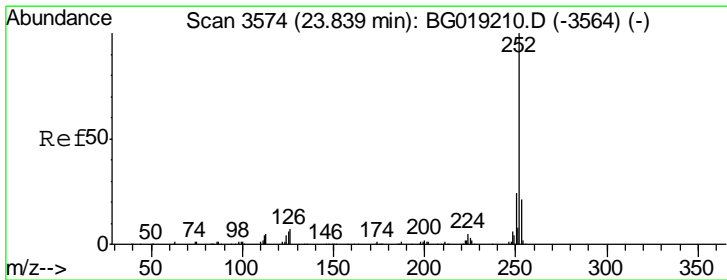
Instrument :
 BNA_G
 ClientSampleID :
 SSTD02011

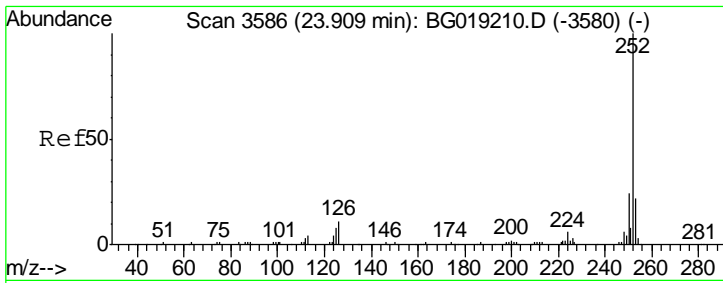


#88
 Benzo(b)fluoranthene
 Concen: 20.10 ng/ul
 RT: 23.84 min Scan# 3574
 Delta R.T. -0.00 min
 Lab File: BG019219.D
 Acq: 15 Oct 2015 23:39

Tgt Ion:252 Resp: 182222

Ion	Ratio	Lower	Upper
252	100		
253	23.1	17.4	26.2
125	6.7	8.1	12.1#

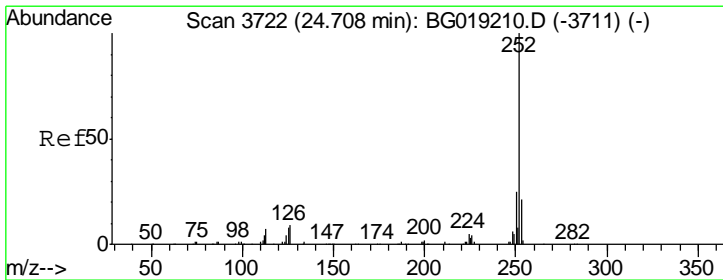
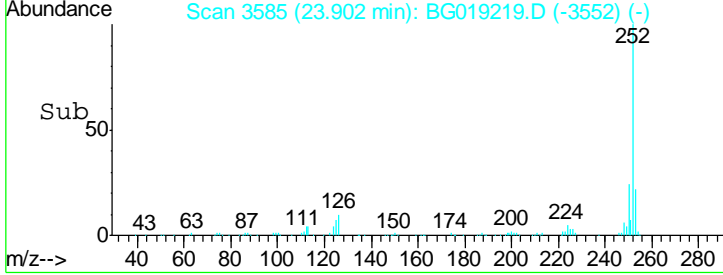
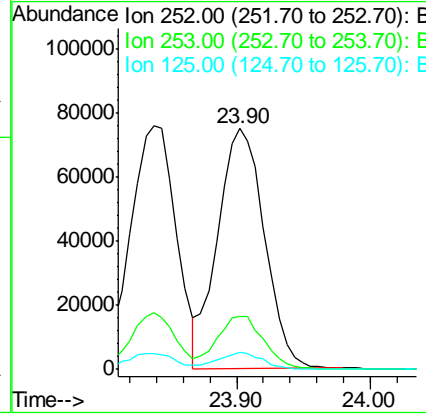
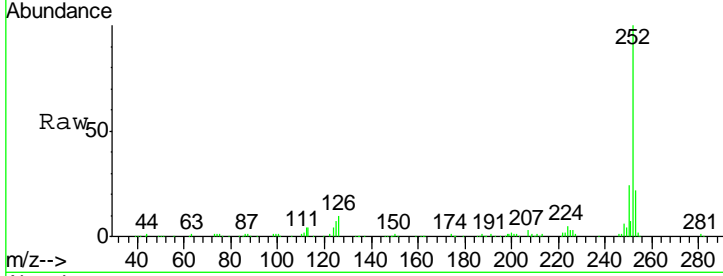




#89
 Benzo(k)fluoranthene
 Concen: 20.51 ng/ul
 RT: 23.90 min Scan# 3585
 Delta R.T. -0.01 min
 Lab File: BG019219.D
 Acq: 15 Oct 2015 23:39

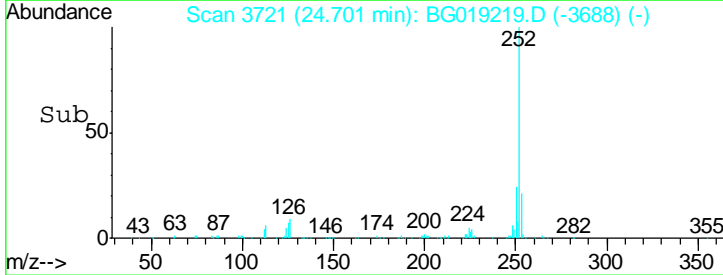
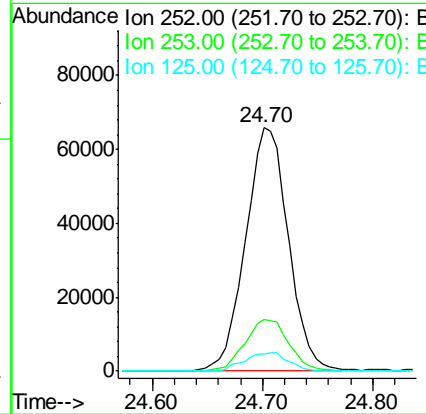
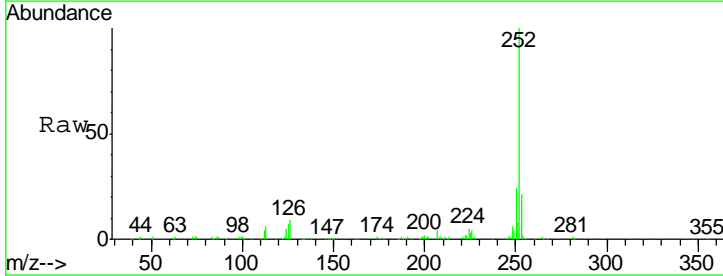
Instrument :
 BNA_G
 ClientSampled :
 SSTD02011

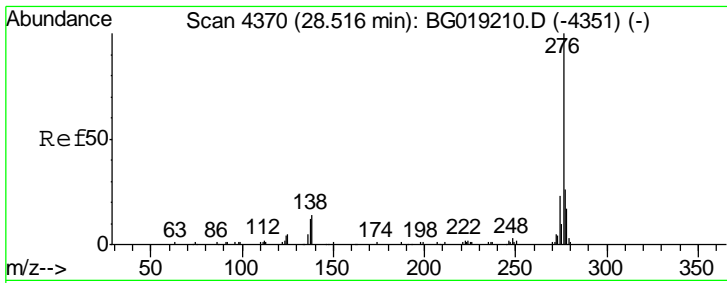
Tgt Ion	Resp	Lower	Upper
252	182440		
253	21.9	17.2	25.8
125	7.1	8.4	12.6#



#91
 Benzo(a)pyrene
 Concen: 20.44 ng/ul
 RT: 24.70 min Scan# 3721
 Delta R.T. -0.01 min
 Lab File: BG019219.D
 Acq: 15 Oct 2015 23:39

Tgt Ion	Resp	Lower	Upper
252	178225		
253	21.3	18.1	27.1
125	6.8	9.4	14.2#

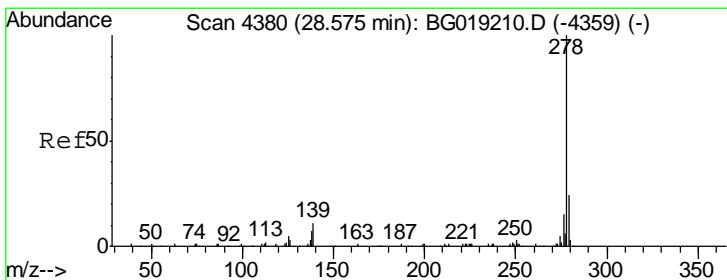
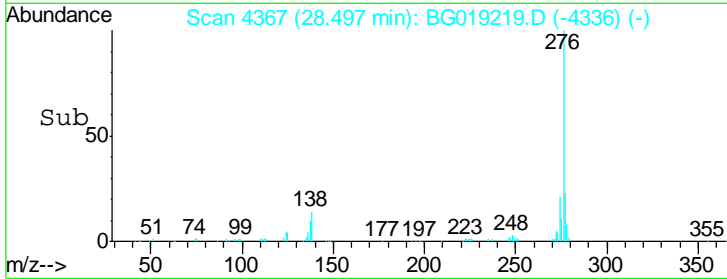
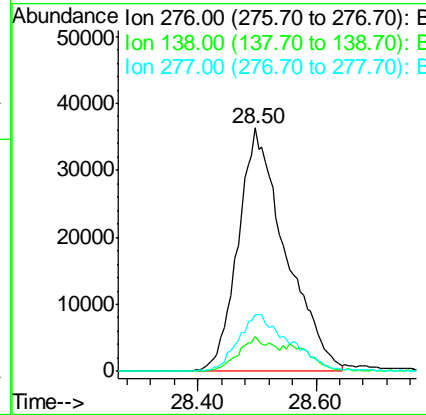
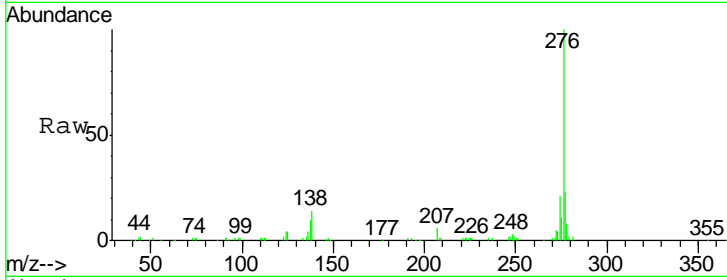




#92
 Indeno(1,2,3-cd)pyrene
 Concen: 19.55 ng/ul
 RT: 28.50 min Scan# 4367
 Delta R.T. -0.02 min
 Lab File: BG019219.D
 Acq: 15 Oct 2015 23:39

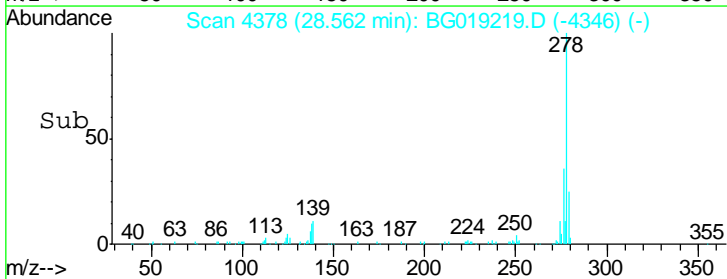
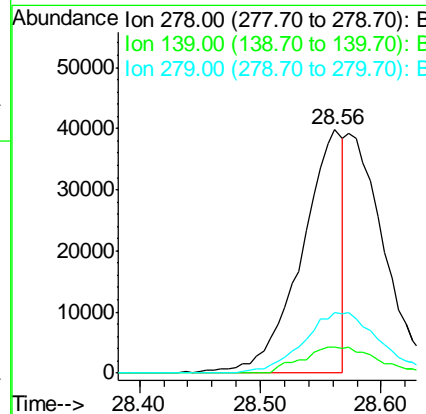
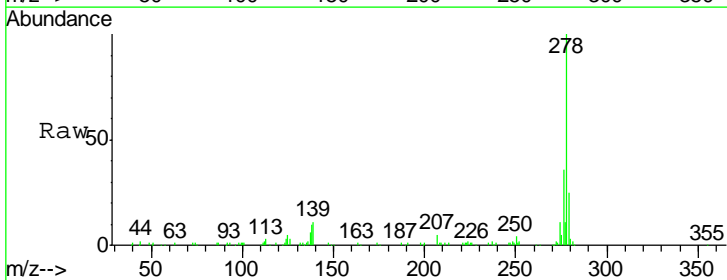
Instrument :
 BNA_G
 ClientSampled :
 SSTD02011

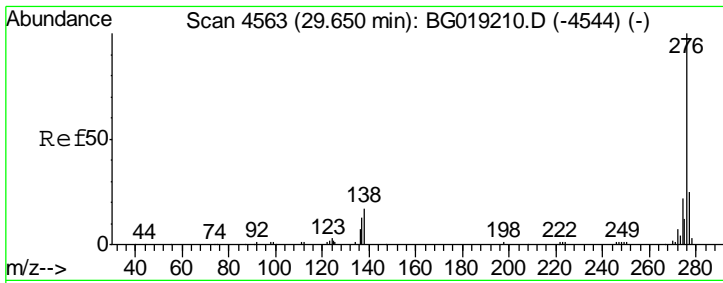
Tgt Ion	Resp	Lower	Upper
276	202328		
138	14.1	14.9	22.3#
277	23.2	18.0	27.0



#93
 Dibenzo(a,h)anthracene
 Concen: 10.59 ng/ul
 RT: 28.56 min Scan# 4378
 Delta R.T. -0.01 min
 Lab File: BG019219.D
 Acq: 15 Oct 2015 23:39

Tgt Ion	Resp	Lower	Upper
278	95552		
139	10.8	11.2	16.8#
279	24.6	17.6	26.4





#94
 Benzo(a,h,i)perylene
 Concen: 17.27 ng/ul
 RT: 29.64 min Scan# 4562
 Delta R.T. -0.01 min
 Lab File: BG019219.D
 Acq: 15 Oct 2015 23:39

Instrument :
 BNA_G
ClientSampled :
 SSTD02011

Tot Ion	Ratio	Lower	Upper
276	100		
138	13.7	16.3	24.5#
277	24.3	18.7	28.1

