

Data Path : \\74.0.250.170\SVOASRV\HPCHEM1\BNA G\DATA\BG101517\  
 Data File : BG029252.D  
 Acq On : 15 Oct 2017 10:14  
 Operator : SJ/JU  
 Sample : I5593-18  
 Misc :  
 ALS Vial : 25 Sample Multiplier: 1

Instrument :  
 BNA\_G  
 ClientSampleId :

Quant Time: Oct 16 08:37:46 2017  
 Quant Method : Z:\HPCHEM1\BNA G\METHODS\SOM-EPA-BG101417.M  
 Quant Title : SVOA CALIBRATION  
 QLast Update : Sun Oct 15 07:39:50 2017  
 Response via : Initial Calibration

Internal Standards	R.T.	QIon	Response	Conc	Units	Dev(Min)
1) 1,4-Dichlorobenzene-d4	8.17	152	131559	20.00	ng/ul	0.00
18) Naphthalene-d8	10.99	136	587118	20.00	ng/ul	0.00
35) Acenaphthene-d10	14.79	164	331585	20.00	ng/ul	0.00
61) Phenanthrene-d10	17.53	188	688035	20.00	ng/ul	0.00
75) Chrysene-d12	21.80	240	622857	20.00	ng/ul	0.00
83) Perylene-d12	25.13	264	602577	20.00	ng/ul	0.02

## System Monitoring Compounds

3) 1,4-Dioxane-d8	3.55	96	11229	3.47	ng/uL	0.00
5) Phenol-d5	7.32	99	217267	17.21	ng/ul	0.00
7) Bis-(2-Chloroethyl)ether-d	7.49	67	157716	19.96	ng/ul	0.00
9) 2-Chlorophenol-d4	7.70	132	178505	20.04	ng/ul	0.00
13) 4-Methylphenol-d8	8.87	113	121641	11.93	ng/ul	0.00
19) Nitrobenzene-d5	9.33	128	97836	23.21	ng/ul	0.00
22) 2-Nitrophenol-d4	10.06	143	104846	24.28	ng/ul	0.00
26) 2,4-Dichlorophenol-d3	10.60	165	185410	18.84	ng/ul	0.00
29) 4-Chloroaniline-d4	11.12	131	105089	9.19	ng/ul	0.00
43) Dimethylphthalate-d6	14.19	166	575310	20.29	ng/ul	0.00
46) Acenaphthylene-d8	14.49	160	716589	20.79	ng/ul	0.00
51) 4-Nitrophenol-d4	14.97	143	60178	11.50	ng/ul	0.00
57) Fluorene-d10	15.78	176	496241	21.37	ng/ul	0.00
62) 4,6-Dinitro-2-methylphenol	15.88	200	44335	13.20	ng/ul	0.00
70) Anthracene-d10	17.62	188	695615	21.38	ng/ul	0.00
76) Pyrene-d10	19.90	212	691771	21.46	ng/ul	0.00
87) Benzo(a)pyrene-d12	24.89	264	592510	20.76	ng/ul	0.00

## Target Compounds

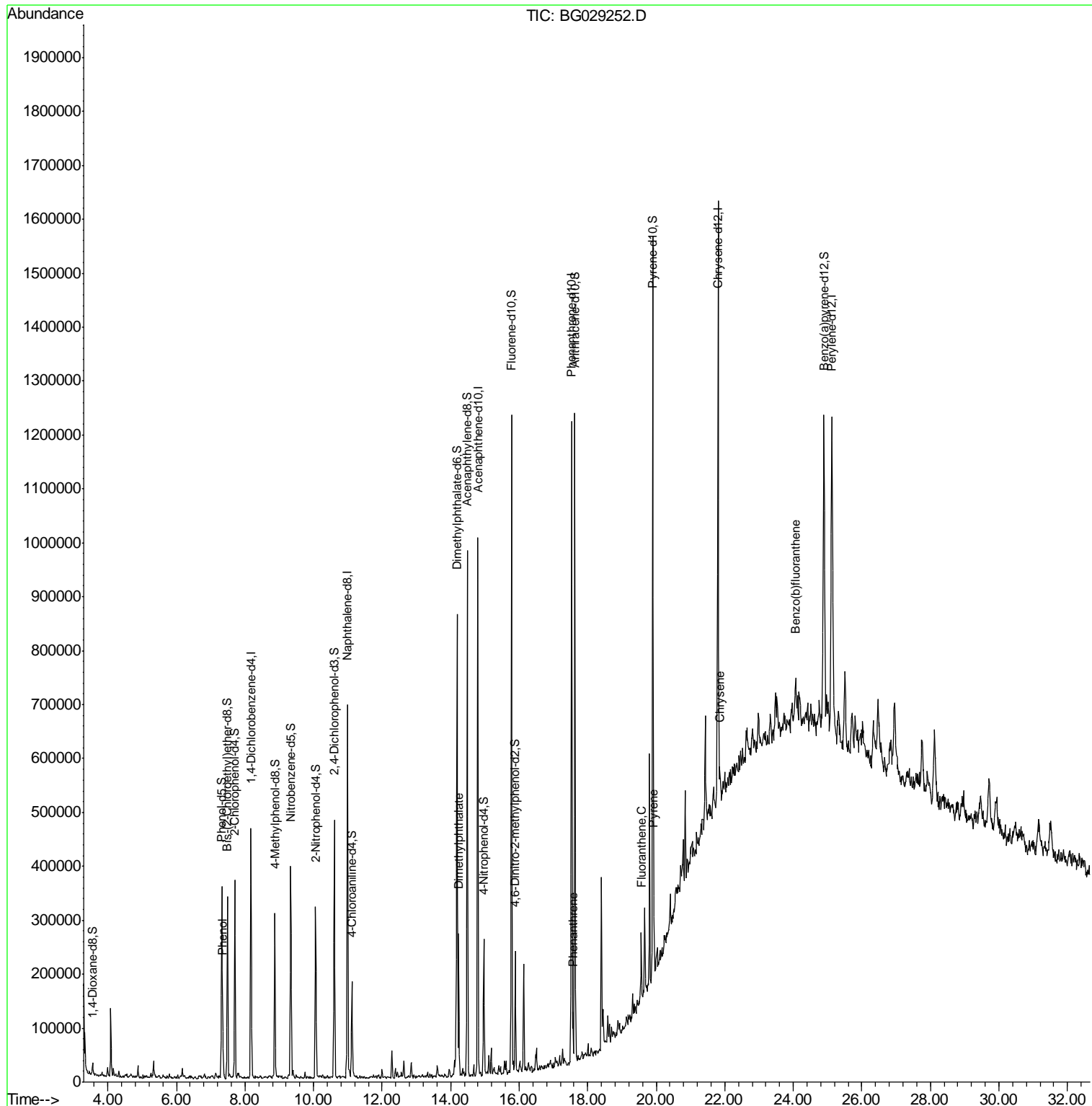
					Ovalue
6) Phenol	7.35	94	50668	3.878	ng/ul 94
44) Dimethylphthalate	14.23	163	164909	5.964	ng/ul 99
69) Phenanthrene	17.57	178	56192	1.511	ng/ul 98
74) Fluoranthene	19.57	202	71686	1.725	ng/ul# 93
77) Pyrene	19.93	202	72044	1.726	ng/ul# 88
82) Chrysene	21.85	228	50235	1.416	ng/ul# 88
85) Benzo(b)fluoranthene	24.07	252	47091	1.302	ng/ul# 60

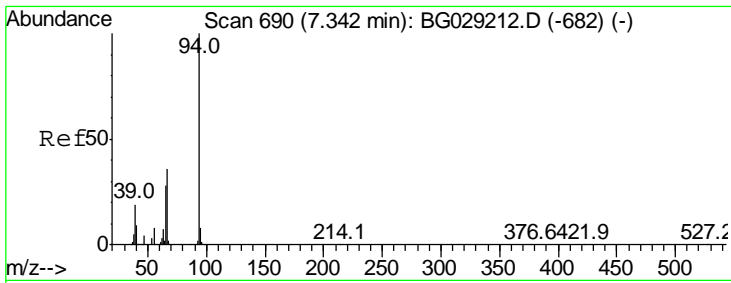
(#) = qualifier out of range (m) = manual integration (+) = signals summed

Data Path : \\74.0.250.170\SVOASRV\HPCHEM1\BNA G\DATA\BG101517\  
 Data File : BG029252.D  
 Acq On : 15 Oct 2017 10:14  
 Operator : SJ/JU  
 Sample : I5593-18  
 Misc :  
 ALS Vial : 25 Sample Multiplier: 1

Instrument :  
 BNA\_G  
 ClientSampled :

Quant Time: Oct 16 08:37:46 2017  
 Quant Method : Z:\HPCHEM1\BNA G\METHODS\SOM-EPA-BG101417.M  
 Quant Title : SVOA CALIBRATION  
 QLast Update : Sun Oct 15 07:39:50 2017  
 Response via : Initial Calibration

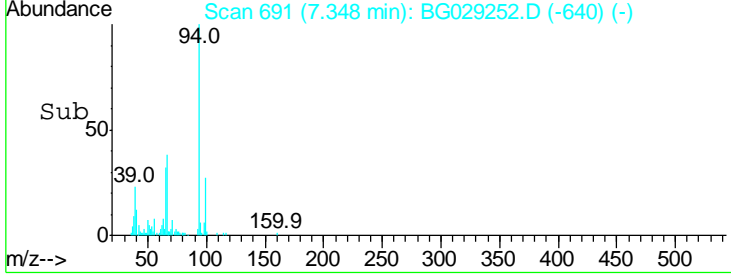
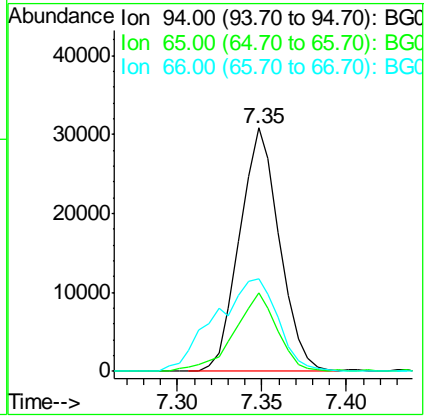
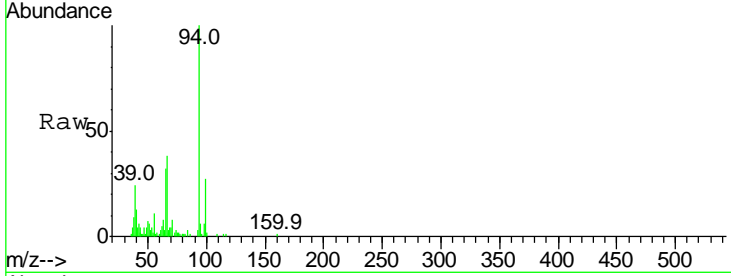




#6  
 Phenol  
 Concen: 3.878 ng/ul  
 RT: 7.35 min Scan# 691  
 Delta R.T. -0.00 min  
 Lab File: BG029252.D  
 Acq: 15 Oct 2017 10:14

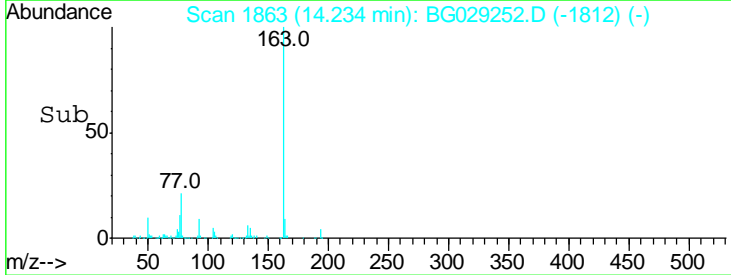
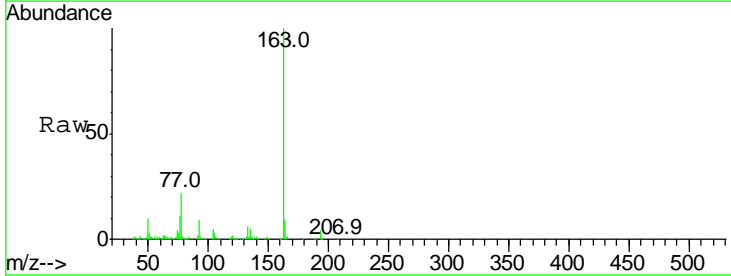
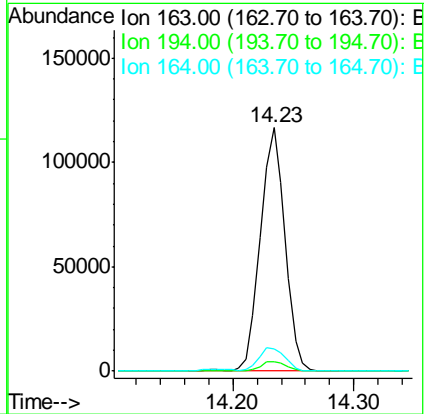
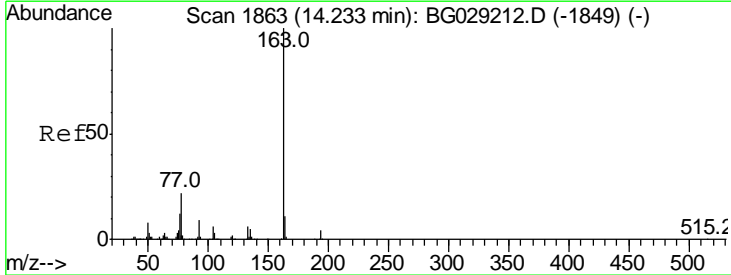
Instrument :  
 BNA\_G  
 ClientSampled :

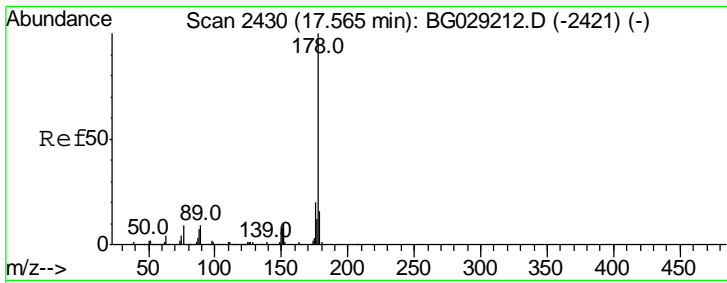
Tgt Ion	Resp	Lower	Upper
94	100		
65	32.3	27.1	40.7
66	37.9	34.6	52.0



#44  
 Dimethylphthalate  
 Concen: 5.964 ng/ul  
 RT: 14.23 min Scan# 1863  
 Delta R.T. -0.00 min  
 Lab File: BG029252.D  
 Acq: 15 Oct 2017 10:14

Tgt Ion	Resp	Lower	Upper
163	100		
194	3.8	3.5	5.3
164	9.0	7.6	11.4

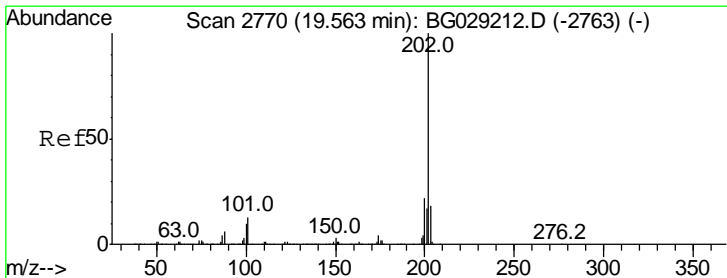
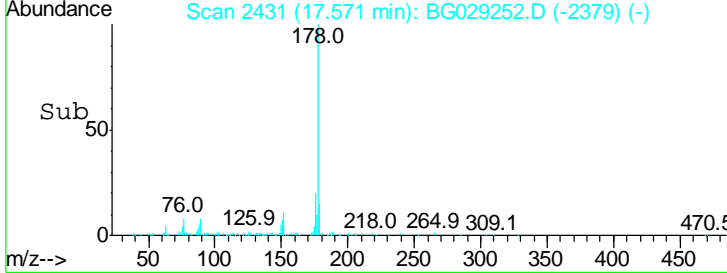
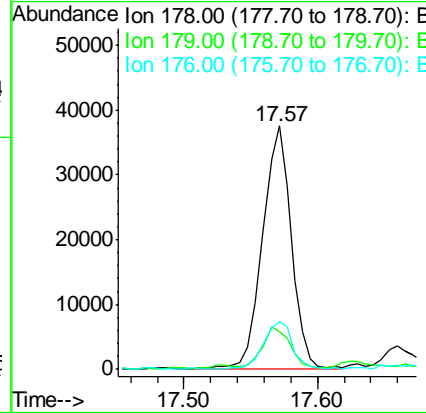
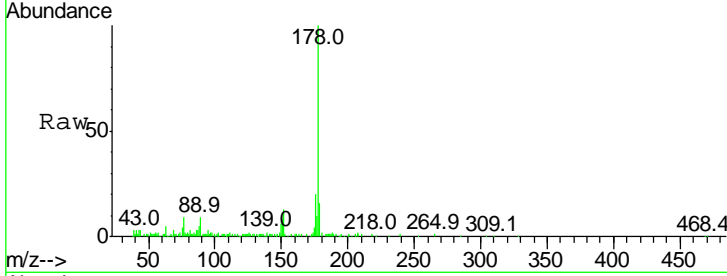




#69  
 Phenanthrene  
 Concen: 1.511 ng/ul  
 RT: 17.57 min Scan# 2431  
 Delta R.T. 0.00 min  
 Lab File: BG029252.D  
 Acq: 15 Oct 2017 10:14

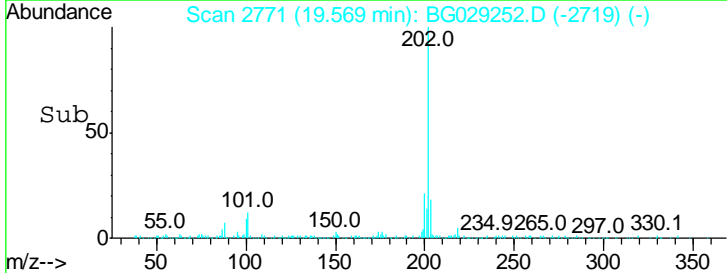
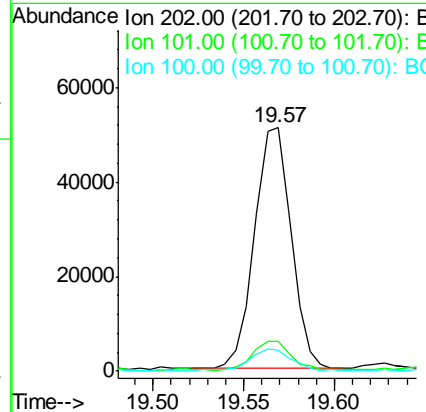
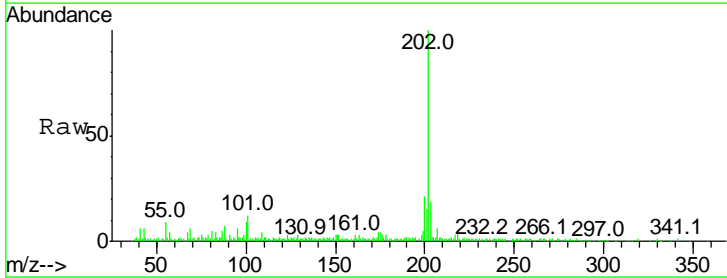
Instrument :  
 BNA\_G  
 ClientSampled :

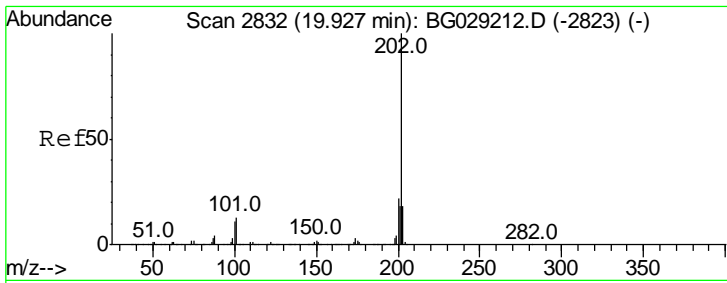
Tgt Ion	Resp	Lower	Upper
178	100		
179	15.6	13.0	19.6
176	19.7	15.3	22.9



#74  
 Fluoranthene  
 Concen: 1.725 ng/ul  
 RT: 19.57 min Scan# 2771  
 Delta R.T. 0.00 min  
 Lab File: BG029252.D  
 Acq: 15 Oct 2017 10:14

Tgt Ion	Resp	Lower	Upper
202	100		
101	12.1	7.4	11.2#
100	8.8	5.6	8.4#

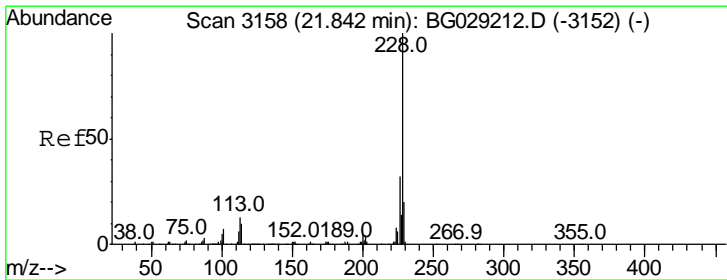
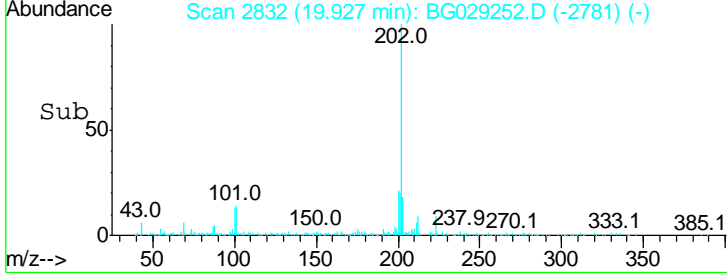
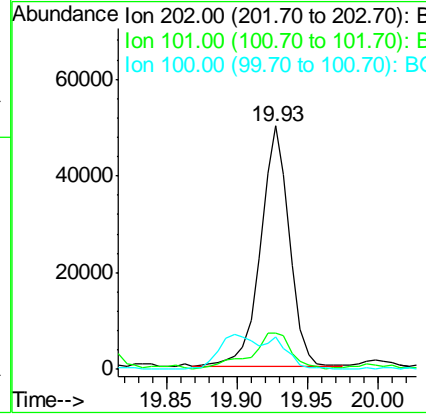
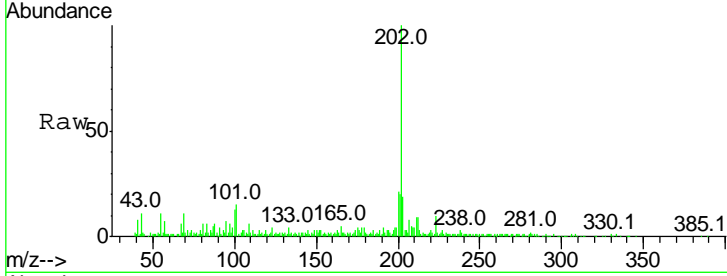




#77  
 Pyrene  
 Concen: 1.726 ng/ul  
 RT: 19.93 min Scan# 2832  
 Delta R.T. -0.00 min  
 Lab File: BG029252.D  
 Acq: 15 Oct 2017 10:14

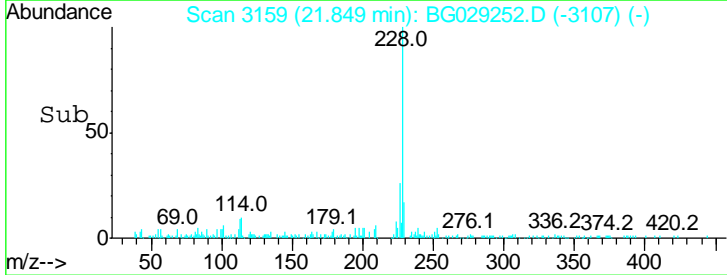
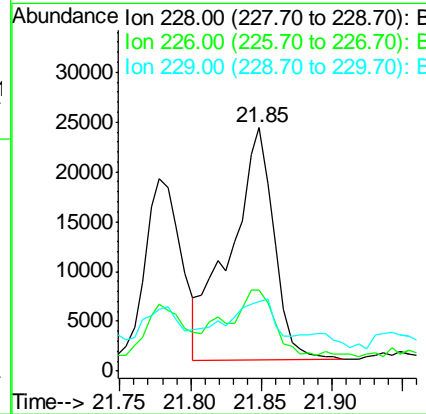
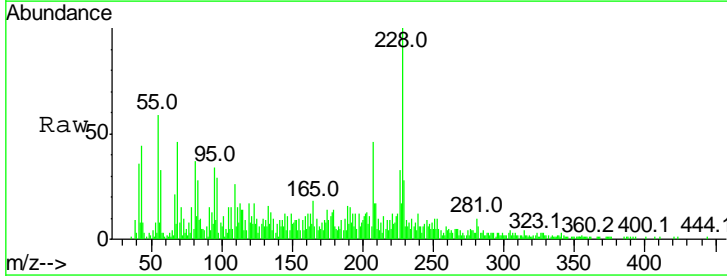
Instrument :  
 BNA\_G  
 ClientSampled :

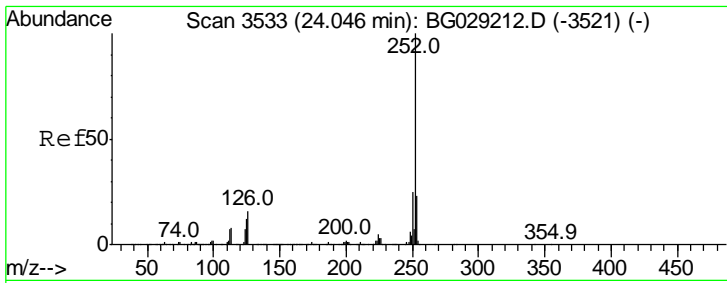
Tgt Ion	Ratio	Lower	Upper
202	100		
101	14.7	8.4	12.6#
100	13.3	7.0	10.6#



#82  
 Chrysene  
 Concen: 1.416 ng/ul  
 RT: 21.85 min Scan# 3159  
 Delta R.T. 0.00 min  
 Lab File: BG029252.D  
 Acq: 15 Oct 2017 10:14

Tgt Ion	Ratio	Lower	Upper
228	100		
226	33.5	24.2	36.2
229	28.4	15.2	22.8#

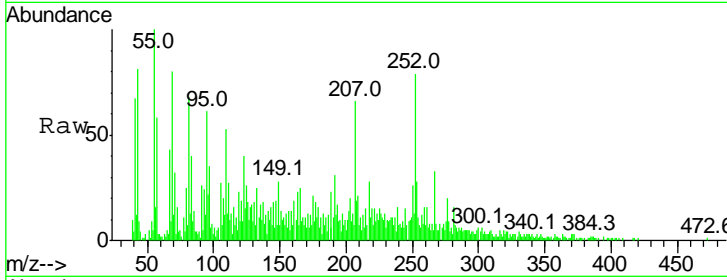




#85

Benzo(b)fluoranthene  
 Concen: 1.302 ng/ul  
 RT: 24.07 min Scan# 3537  
 Delta R.T. 0.01 min  
 Lab File: BG029252.D  
 Acq: 15 Oct 2017 10:14

Instrument :  
 BNA\_G  
 ClientSampleId :



Tot Ion: 252 Resp: 47091

Ion	Ratio	Lower	Upper
252	100		
253	35.3	17.0	25.4#
125	32.6	7.5	11.3#

