

Data Path : Z:\svoasrv\HPCHEM1\BNA_G\Data\BG101921\
 Data File : BG050636.D
 Acq On : 19 Oct 2021 15:46
 Operator : CG/JU
 Sample : M4224-01MSD
 Misc :
 ALS Vial : 10 Sample Multiplier: 1

Instrument :
 BNA_G
 ClientSampleId :
 515-ZMSD

Quant Time: Oct 19 17:34:58 2021
 Quant Method : Z:\svoasrv\HPCHEM1\BNA_G\Methods\8270-BG100621.M
 Quant Title : ASP BNA STANDARDS FOR 5 POINT CALIBRATION
 QLast Update : Thu Oct 14 10:56:22 2021
 Response via : Initial Calibration

Compound	R.T.	QIon	Response	Conc	Units	Dev(Min)	
Internal Standards							
1) 1,4-Dichlorobenzene-d4	8.254	152	40245	20.000	ng	0.00	
21) Naphthalene-d8	11.080	136	169710	20.000	ng	# 0.00	
39) Acenaphthene-d10	14.875	164	113805	20.000	ng	0.00	
64) Phenanthrene-d10	17.619	188	254502	20.000	ng	# 0.00	
76) Chrysene-d12	21.920	240	223151	20.000	ng	# 0.00	
86) Perylene-d12	25.328	264	223107	20.000	ng	0.00	
System Monitoring Compounds							
5) 2-Fluorophenol	5.798	112	376914	140.064	ng	0.00	
7) Phenol-d6	7.402	99	481384	123.555	ng	0.00	
23) Nitrobenzene-d5	9.429	82	384658	93.826	ng	0.00	
42) 2,4,6-Tribromophenol	16.362	330	163936	151.024	ng	0.00	
45) 2-Fluorobiphenyl	13.501	172	691332	91.426	ng	0.00	
79) Terphenyl-d14	20.205	244	1091779	95.347	ng	0.00	
Target Compounds							
2) 1,4-Dioxane	3.665	88	57726	41.419	ng	# 12	
3) Pyridine	4.076	79	130014	34.148	ng	# 90	
4) n-Nitrosodimethylamine	3.982	42	88788	49.485	ng	# 46	
6) Aniline	7.578	93	135314	29.893	ng	95	
8) 2-Chlorophenol	7.813	128	146381	56.497	ng	87	
9) Benzaldehyde	7.384	77	92721	37.428	ng	92	
10) Phenol	7.425	94	180753	47.715	ng	85	
11) bis(2-Chloroethyl)ether	7.666	93	151464	51.228	ng	85	
12) 1,3-Dichlorobenzene	8.142	146	146627	49.024	ng	95	
13) 1,4-Dichlorobenzene	8.289	146	147511	48.921	ng	96	
14) 1,2-Dichlorobenzene	8.612	146	143061	49.673	ng	98	
15) Benzyl Alcohol	8.489	79	172181	55.923	ng	92	
16) 2,2'-oxybis(1-Chloropr...	8.771	45	243455	50.489	ng	85	
17) 2-Methylphenol	8.689	107	135034	54.175	ng	89	
18) Hexachloroethane	9.347	117	57397	50.295	ng	94	
19) n-Nitroso-di-n-propyla...	9.059	70	143413	50.502	ng	# 90	
20) 3+4-Methylphenols	9.018	107	187740	53.511	ng	95	
22) Acetophenone	9.082	105	243202	50.406	ng	# 97	
24) Nitrobenzene	9.470	77	208853	51.235	ng	98	
25) Isophorone	9.993	82	375303	51.611	ng	# 96	
26) 2-Nitrophenol	10.187	139	83367	55.697	ng	93	
27) 2,4-Dimethylphenol	10.228	122	145342	56.203	ng	94	
28) bis(2-Chloroethoxy)met...	10.469	93	208020	50.031	ng	93	
29) 2,4-Dichlorophenol	10.722	162	145267	55.114	ng	95	
30) 1,2,4-Trichlorobenzene	10.939	180	145791	48.693	ng	94	
31) Naphthalene	11.133	128	452732	49.838	ng	96	
32) Benzoic acid	10.345	122	46398	24.175	ng	# 72	
33) 4-Chloroaniline	11.239	127	32585	8.549	ng	97	
34) Hexachlorobutadiene	11.403	225	89225	47.468	ng	93	
35) Caprolactam	12.008	113	47298	46.887	ng	# 61	
36) 4-Chloro-3-methylphenol	12.337	107	182085	55.269	ng	# 91	
37) 2-Methylnaphthalene	12.719	142	327350	52.227	ng	94	
38) 1-Methylnaphthalene	12.937	142	304036	50.024	ng	90	
40) 1,2,4,5-Tetrachloroben...	13.078	216	164561	48.966	ng	97	
41) Hexachlorocyclopentadiene	13.054	237	175504	90.360	ng	94	
43) 2,4,6-Trichlorophenol	13.313	196	123620	52.200	ng	97	

Data Path : Z:\svoasrv\HPCHEM1\BNA_G\Data\BG101921\
 Data File : BG050636.D
 Acq On : 19 Oct 2021 15:46
 Operator : CG/JU
 Sample : M4224-01MSD
 Misc :
 ALS Vial : 10 Sample Multiplier: 1

Instrument :
 BNA_G
 ClientSampleId :
 515-ZMSD

Quant Time: Oct 19 17:34:58 2021
 Quant Method : Z:\svoasrv\HPCHEM1\BNA_G\Methods\8270-BG100621.M
 Quant Title : ASP BNA STANDARDS FOR 5 POINT CALIBRATION
 QLast Update : Thu Oct 14 10:56:22 2021
 Response via : Initial Calibration

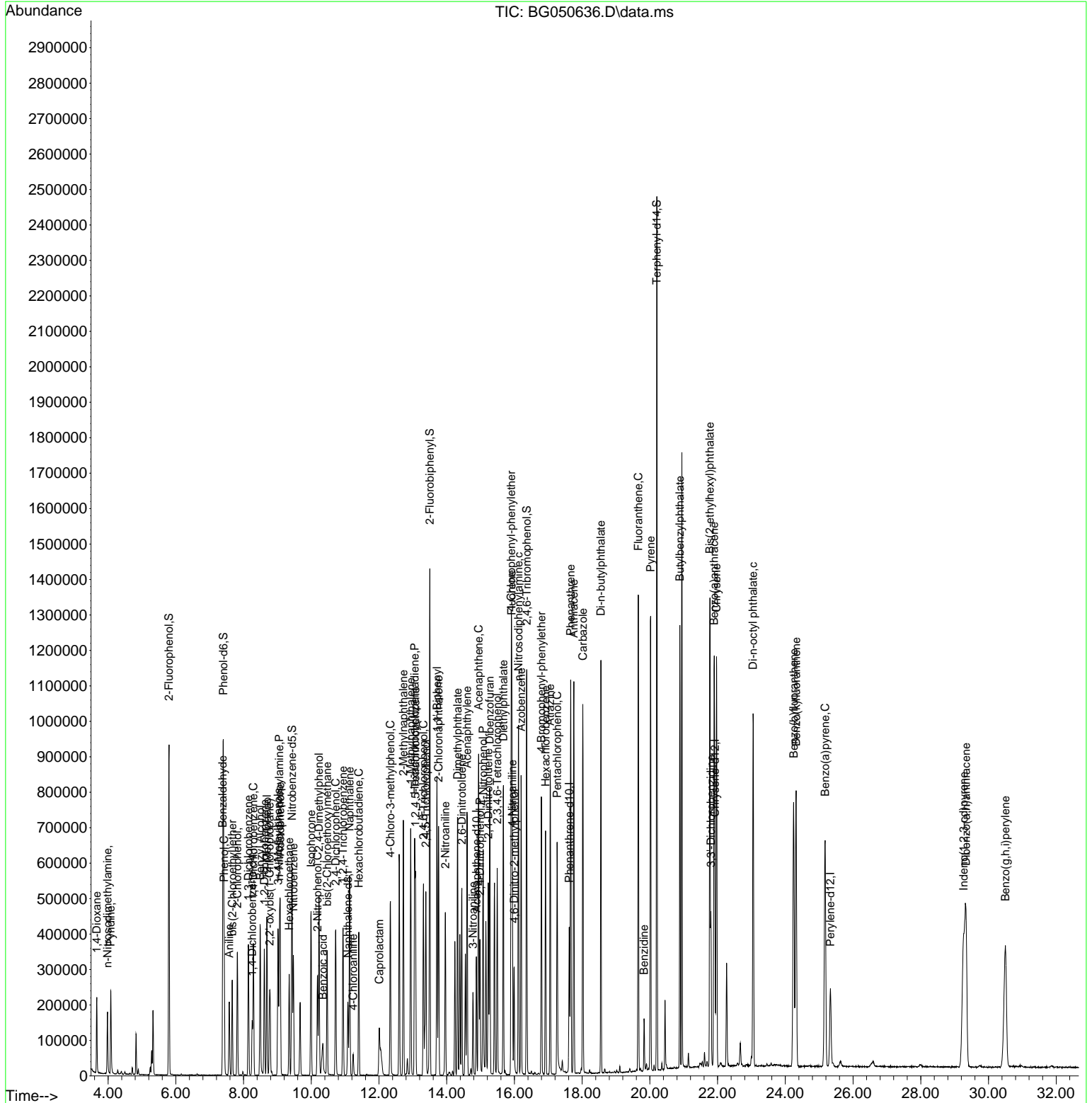
Compound	R.T.	QIon	Response	Conc	Units	Dev(Min)
44) 2,4,5-Trichlorophenol	13.383	196	134583	54.356	ng	92
46) 1,1'-Biphenyl	13.712	154	408205	49.176	ng	94
47) 2-Chloronaphthalene	13.759	162	326377	51.205	ng	98
48) 2-Nitroaniline	13.959	65	144617	57.036	ng	95
49) Acenaphthylene	14.599	152	544616	52.147	ng	97
50) Dimethylphthalate	14.323	163	464602	54.010	ng	99
51) 2,6-Dinitrotoluene	14.447	165	97567	56.627	ng	93
52) Acenaphthene	14.940	154	324771	48.393	ng	90
53) 3-Nitroaniline	14.776	138	53579	26.290	ng	93
54) 2,4-Dinitrophenol	14.981	184	78137	73.102	ng	92
55) Dibenzofuran	15.269	168	517381	49.846	ng	99
56) 4-Nitrophenol	15.075	139	154346	94.148	ng	# 80
57) 2,4-Dinitrotoluene	15.228	165	141369	58.212	ng	95
58) Fluorene	15.921	166	417598	52.379	ng	96
59) 2,3,4,6-Tetrachlorophenol	15.492	232	112347	52.090	ng	96
60) Diethylphthalate	15.675	149	475442	52.604	ng	97
61) 4-Chlorophenyl-phenyle...	15.904	204	221363	50.745	ng	98
62) 4-Nitroaniline	15.939	138	109268	51.532	ng	# 66
63) Azobenzene	16.197	77	524090	50.093	ng	83
65) 4,6-Dinitro-2-methylph...	15.992	198	67060	43.869	ng	91
66) n-Nitrosodiphenylamine	16.121	169	375916	51.983	ng	97
67) 4-Bromophenyl-phenylether	16.797	248	132503	51.667	ng	98
68) Hexachlorobenzene	16.920	284	139192	54.609	ng	94
69) Atrazine	17.055	200	151690	53.250	ng	97
70) Pentachlorophenol	17.261	266	124671	71.850	ng	97
71) Phenanthrene	17.660	178	694590	51.792	ng	98
72) Anthracene	17.754	178	700112	52.533	ng	98
73) Carbazole	18.019	167	653414	49.194	ng	98
74) Di-n-butylphthalate	18.554	149	806405	51.734	ng	# 97
75) Fluoranthene	19.658	202	820583	49.775	ng	96
77) Benzidine	19.828	184	87519	12.101	ng	98
78) Pyrene	20.022	202	820168	51.803	ng	97
80) Butylbenzylphthalate	20.886	149	369473	55.171	ng	94
81) Benzo(a)anthracene	21.897	228	757389	51.294	ng	99
82) 3,3'-Dichlorobenzidine	21.803	252	150325	30.719	ng	# 97
83) Chrysene	21.967	228	732781	52.759	ng	96
84) Bis(2-ethylhexyl)phtha...	21.773	149	524390	55.110	ng	97
85) Di-n-octyl phthalate	23.048	149	887602	55.927	ng	96
87) Indeno(1,2,3-cd)pyrene	29.264	276	847914	54.565	ng	# 93
88) Benzo(b)fluoranthene	24.247	252	763113	55.850	ng	# 93
89) Benzo(k)fluoranthene	24.317	252	745667	55.473	ng	# 97
90) Benzo(a)pyrene	25.175	252	736294	63.379	ng	# 93
91) Dibenzo(a,h)anthracene	29.335	278	708182	55.098	ng	# 91
92) Benzo(g,h,i)perylene	30.498	276	706308	56.108	ng	# 92

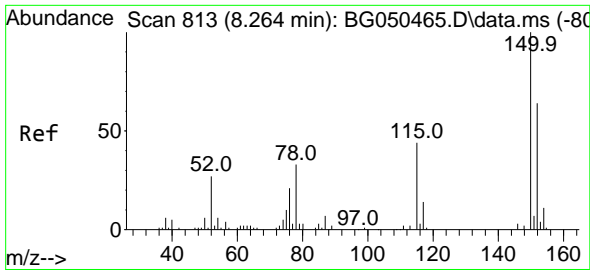
(#) = qualifier out of range (m) = manual integration (+) = signals summed

Data Path : Z:\svoasrv\HPCHEM1\BNA_G\Data\BG101921\
 Data File : BG050636.D
 Acq On : 19 Oct 2021 15:46
 Operator : CG/JU
 Sample : M4224-01MSD
 Misc :
 ALS Vial : 10 Sample Multiplier: 1

Instrument :
 BNA_G
 Client Sampled :
 515-ZMSD

Quant Time: Oct 19 17:34:58 2021
 Quant Method : Z:\svoasrv\HPCHEM1\BNA_G\Methods\8270-BG100621.M
 Quant Title : ASP BNA STANDARDS FOR 5 POINT CALIBRATION
 QLast Update : Thu Oct 14 10:56:22 2021
 Response via : Initial Calibration

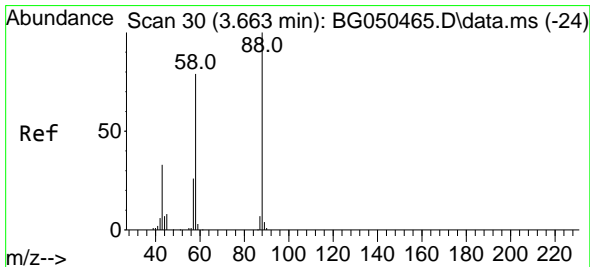
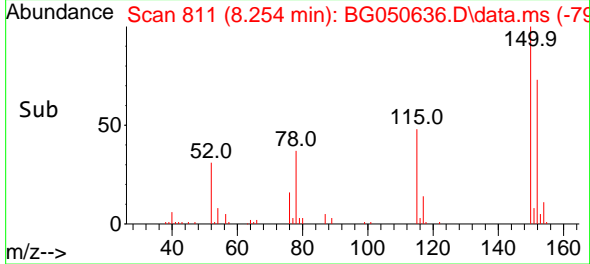
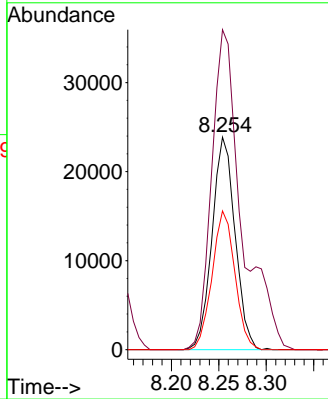
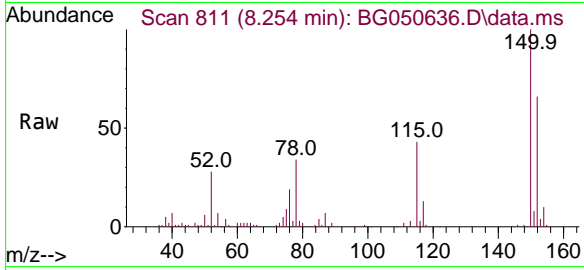




#1
 1,4-Dichlorobenzene-d4
 Concen: 20.000 ng
 RT: 8.254 min Scan# 811
 Delta R.T. -0.004 min
 Lab File: BG050636.D
 Acq: 19 Oct 2021 15:46

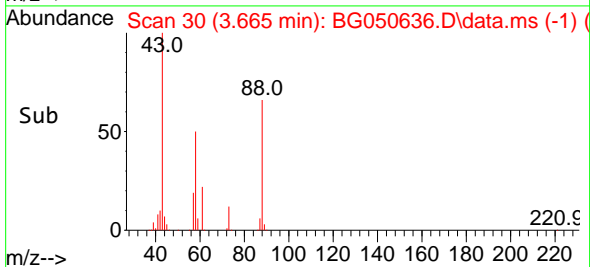
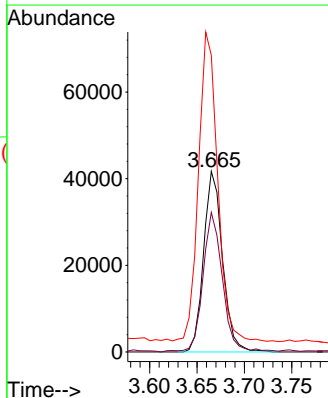
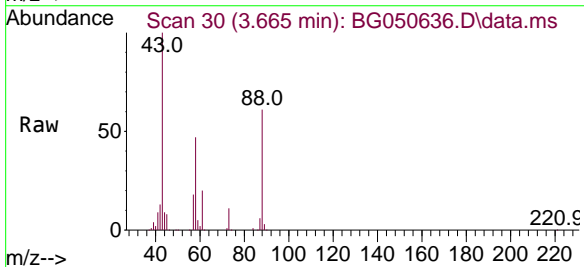
Instrument :
 BNA_G
 ClientSampled :
 515-ZMSD

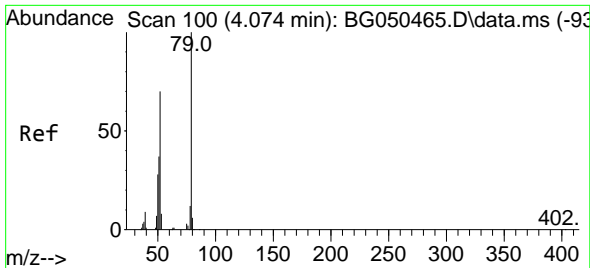
Tgt Ion:152 Resp: 40245
 Ion Ratio Lower Upper
 152 100
 150 150.6 119.4 179.0
 115 65.3 60.2 90.4



#2
 1,4-Dioxane
 Concen: 41.419 ng
 RT: 3.665 min Scan# 30
 Delta R.T. 0.007 min
 Lab File: BG050636.D
 Acq: 19 Oct 2021 15:46

Tgt Ion: 88 Resp: 57726
 Ion Ratio Lower Upper
 88 100
 58 79.9 55.7 83.5
 43 173.4 29.3 43.9#

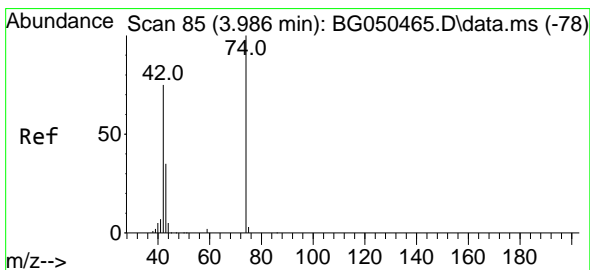
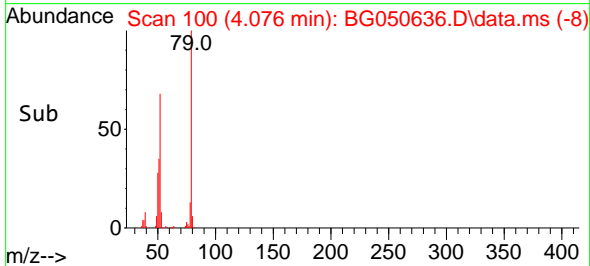
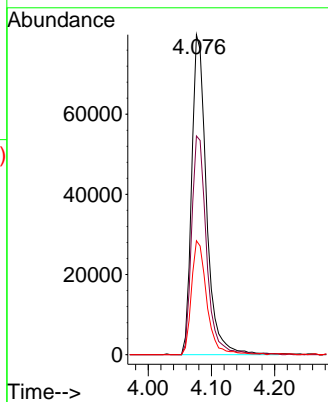
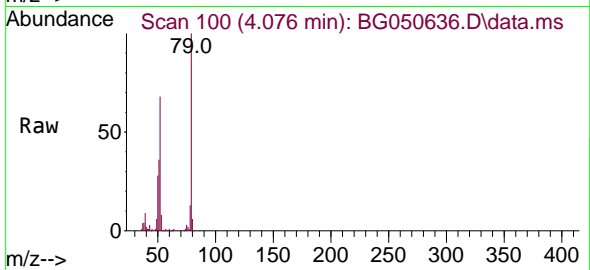




#3
 Pyridine
 Concen: 34.148 ng
 RT: 4.076 min Scan# 100
 Delta R.T. 0.013 min
 Lab File: BG050636.D
 Acq: 19 Oct 2021 15:46

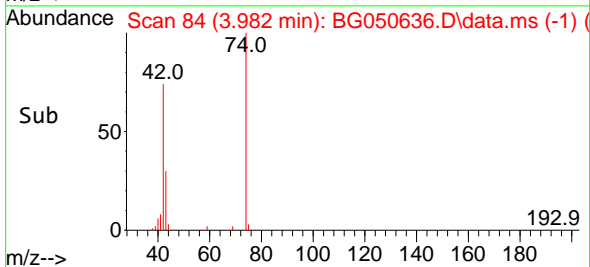
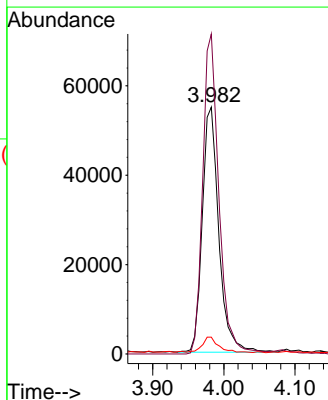
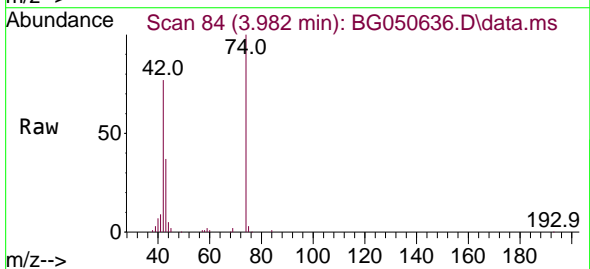
Instrument :
 BNA_G
 ClientSampled :
 515-ZMSD

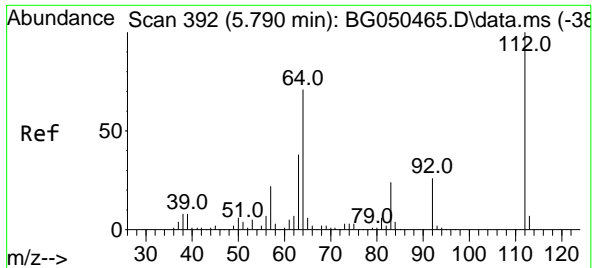
Tgt Ion	Resp	Lower	Upper
79	130014		
52	68.4	58.4	87.6
51	35.6	37.0	55.6#



#4
 n-Nitrosodimethylamine
 Concen: 49.485 ng
 RT: 3.982 min Scan# 84
 Delta R.T. 0.001 min
 Lab File: BG050636.D
 Acq: 19 Oct 2021 15:46

Tgt Ion	Resp	Lower	Upper
42	88788		
74	129.6	64.0	96.0#
44	6.8	2.7	4.1#



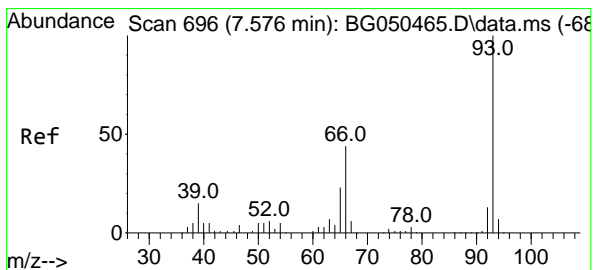
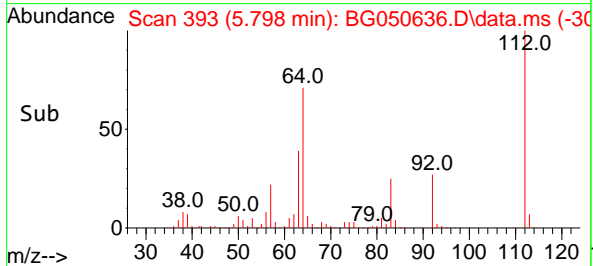
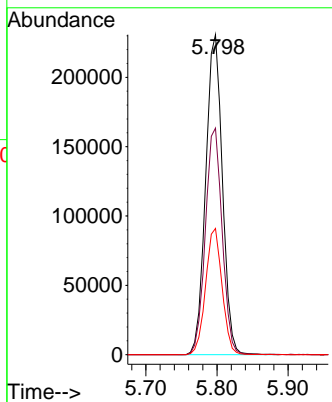
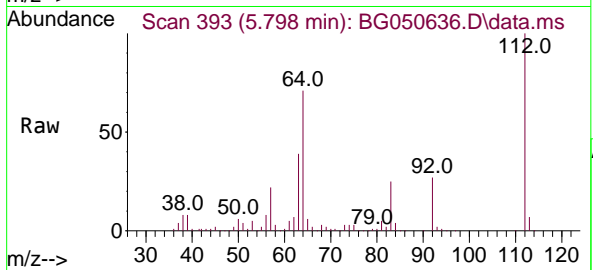


#5
 2-Fluorophenol
 Concen: 140.064 ng
 RT: 5.798 min Scan# 393
 Delta R.T. 0.007 min
 Lab File: BG050636.D
 Acq: 19 Oct 2021 15:46

Instrument :
 BNA_G
 ClientSampled :
 515-ZMSD

Tgt Ion:112 Resp: 376914

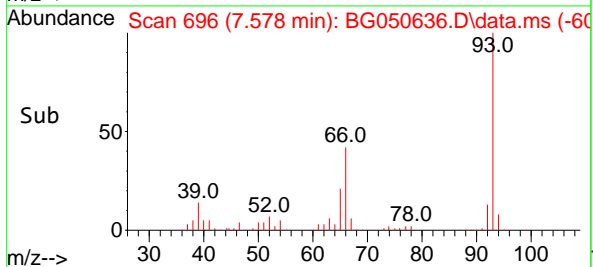
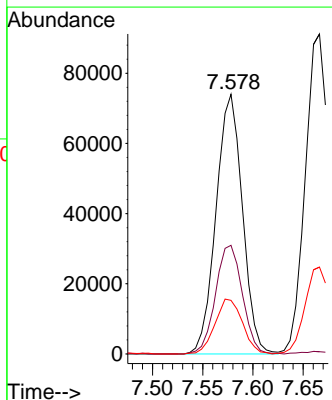
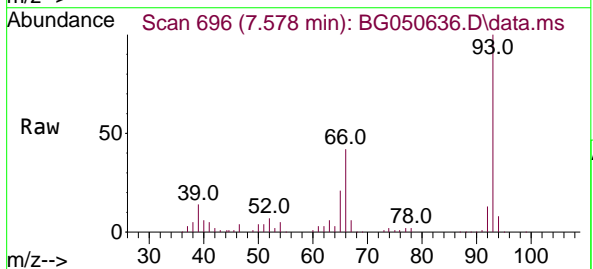
Ion	Ratio	Lower	Upper
112	100		
64	70.8	46.7	70.1#
63	39.5	35.3	52.9

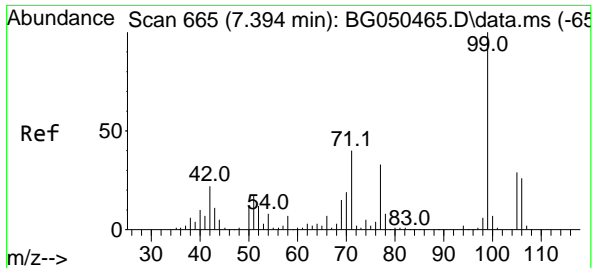


#6
 Aniline
 Concen: 29.893 ng
 RT: 7.578 min Scan# 696
 Delta R.T. 0.001 min
 Lab File: BG050636.D
 Acq: 19 Oct 2021 15:46

Tgt Ion: 93 Resp: 135314

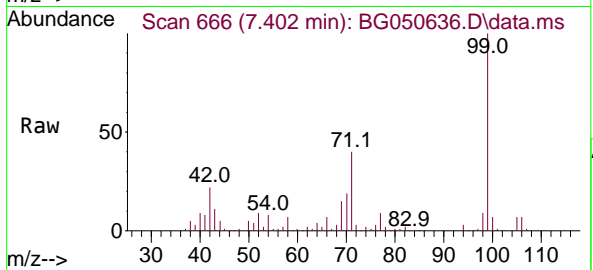
Ion	Ratio	Lower	Upper
93	100		
66	41.9	30.6	45.8
65	20.6	15.0	22.4





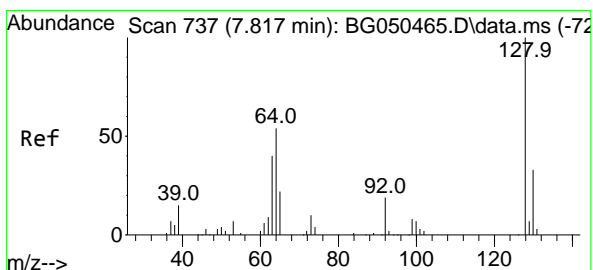
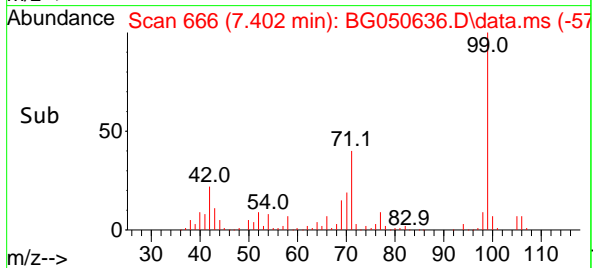
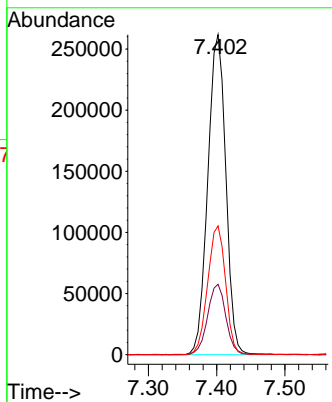
#7
Phenol-d6
Concen: 123.555 ng
RT: 7.402 min Scan# 666
Delta R.T. 0.001 min
Lab File: BG050636.D
Acq: 19 Oct 2021 15:46

Instrument :
BNA_G
ClientSampled :
515-ZMSD

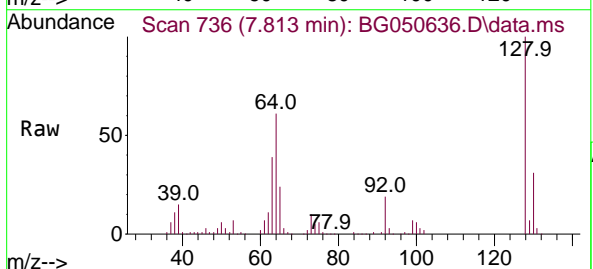


Tgt Ion: 99 Resp: 481384

Ion	Ratio	Lower	Upper
99	100		
42	22.0	20.5	30.7
71	40.2	41.5	62.3#

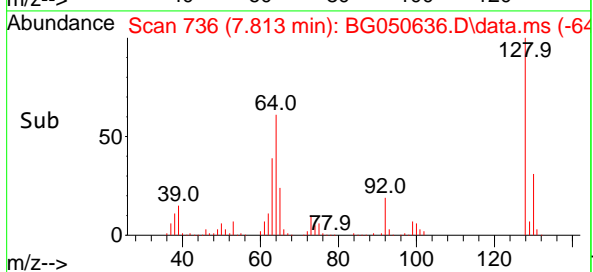
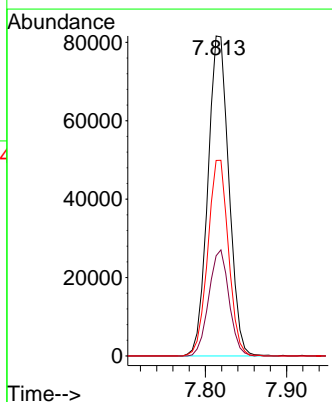


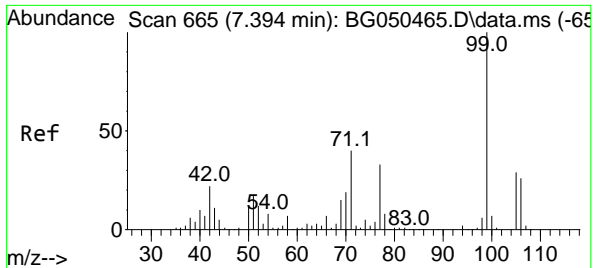
#8
2-Chlorophenol
Concen: 56.497 ng
RT: 7.813 min Scan# 736
Delta R.T. -0.005 min
Lab File: BG050636.D
Acq: 19 Oct 2021 15:46



Tgt Ion: 128 Resp: 146381

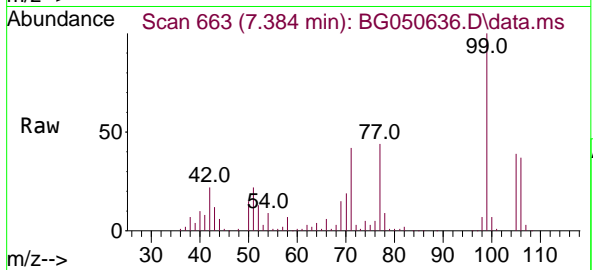
Ion	Ratio	Lower	Upper
128	100		
130	31.3	10.0	50.0
64	61.1	28.1	68.1





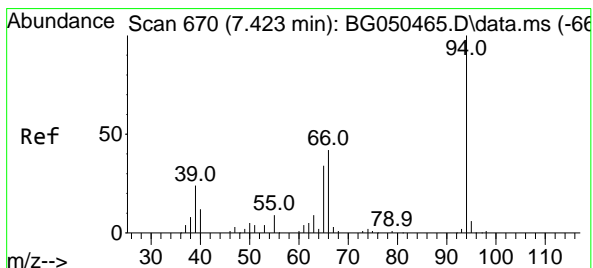
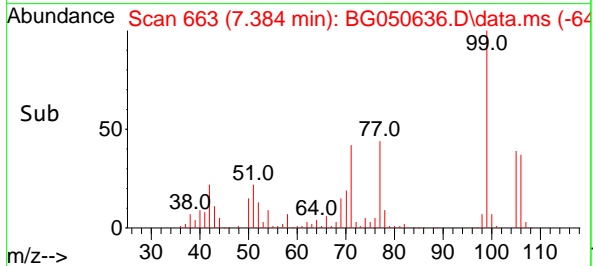
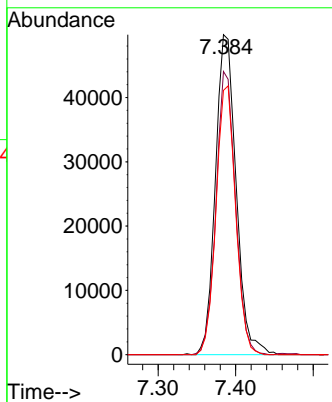
#9
Benzaldehyde
Concen: 37.428 ng
RT: 7.384 min Scan# 663
Delta R.T. -0.005 min
Lab File: BG050636.D
Acq: 19 Oct 2021 15:46

Instrument :
BNA_G
ClientSampled :
515-ZMSD

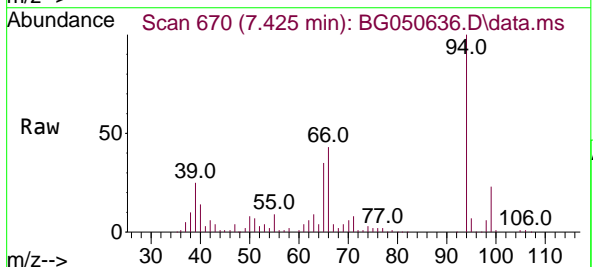


Tgt Ion: 77 Resp: 92721

Ion	Ratio	Lower	Upper
77	100		
105	88.5	68.8	108.8
106	82.6	47.9	87.9

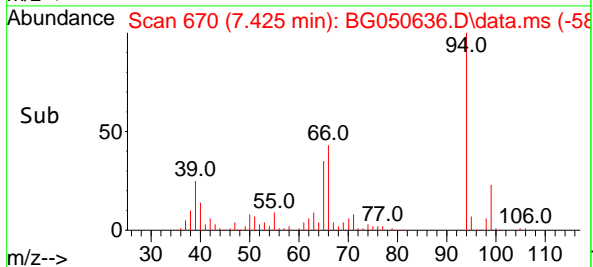
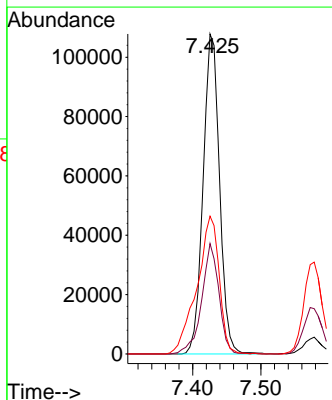


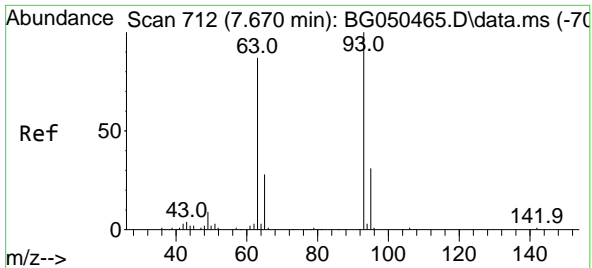
#10
Phenol
Concen: 47.715 ng
RT: 7.425 min Scan# 670
Delta R.T. 0.001 min
Lab File: BG050636.D
Acq: 19 Oct 2021 15:46



Tgt Ion: 94 Resp: 180753

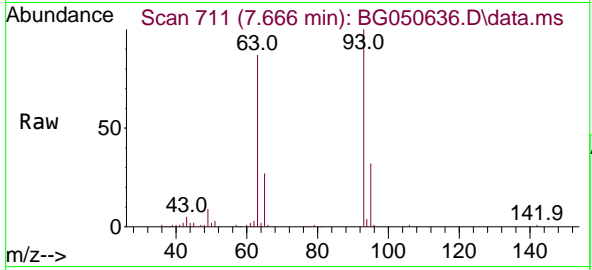
Ion	Ratio	Lower	Upper
94	100		
65	34.5	12.9	52.9
66	43.0	39.4	79.4





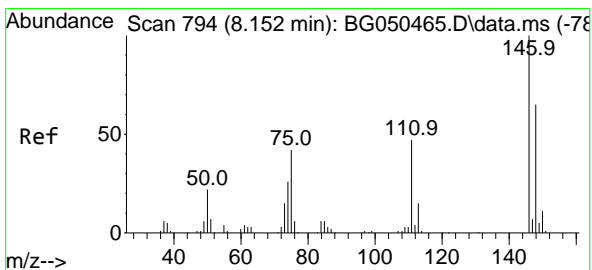
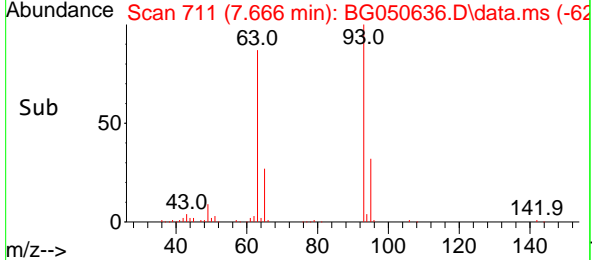
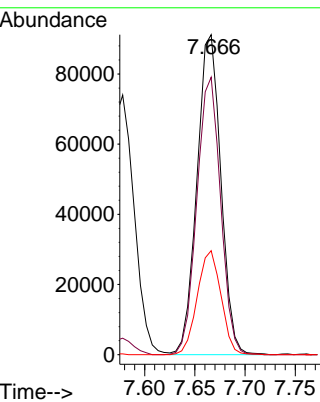
#11
 bis(2-Chloroethyl)ether
 Concen: 51.228 ng
 RT: 7.666 min Scan# 711
 Delta R.T. 0.001 min
 Lab File: BG050636.D
 Acq: 19 Oct 2021 15:46

Instrument :
 BNA_G
 ClientSampled :
 515-ZMSD

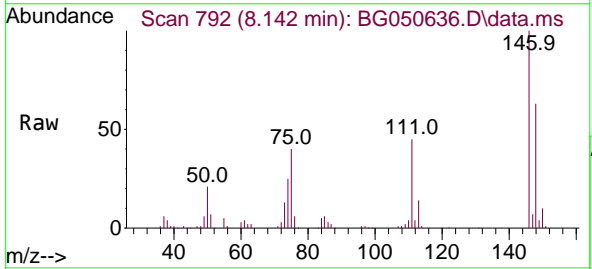


Tgt Ion: 93 Resp: 151464

Ion	Ratio	Lower	Upper
93	100		
63	86.7	50.4	90.4
95	32.5	15.3	55.3

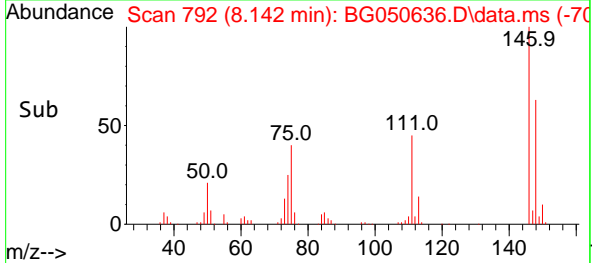
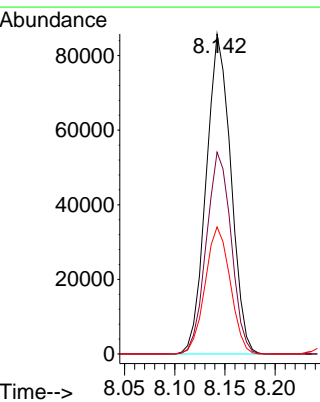


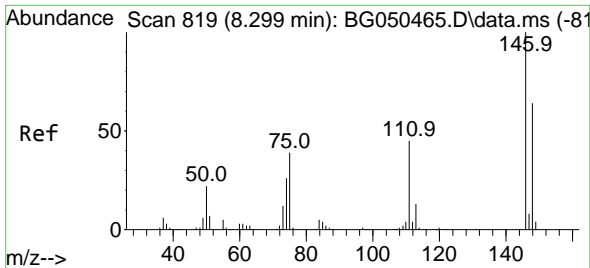
#12
 1,3-Dichlorobenzene
 Concen: 49.024 ng
 RT: 8.142 min Scan# 792
 Delta R.T. -0.005 min
 Lab File: BG050636.D
 Acq: 19 Oct 2021 15:46



Tgt Ion: 146 Resp: 146627

Ion	Ratio	Lower	Upper
146	100		
148	63.0	52.6	78.8
75	39.7	35.7	53.5

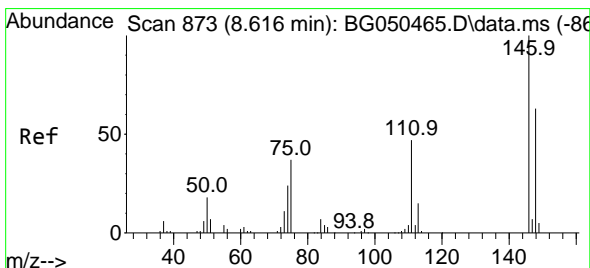
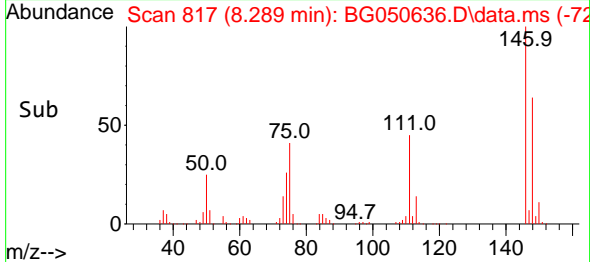
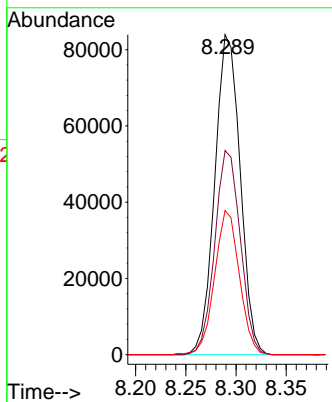
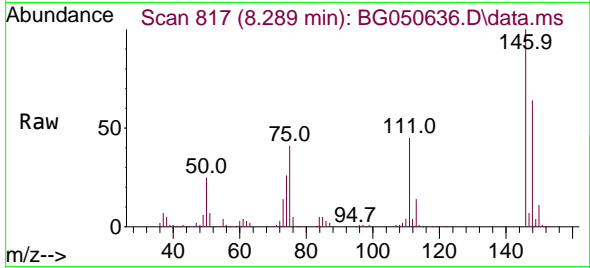




#13
 1,4-Dichlorobenzene
 Concen: 48.921 ng
 RT: 8.289 min Scan# 817
 Delta R.T. -0.005 min
 Lab File: BG050636.D
 Acq: 19 Oct 2021 15:46

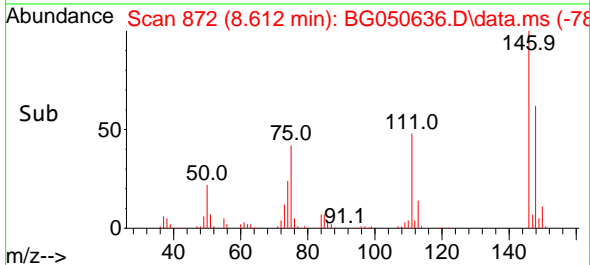
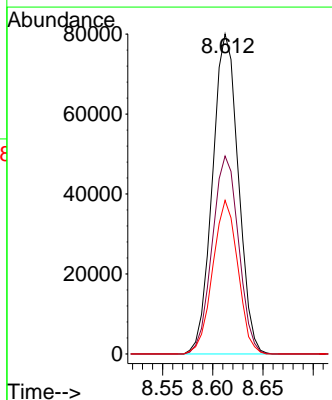
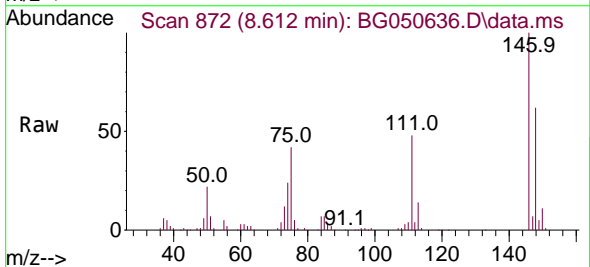
Instrument :
 BNA_G
 ClientSampled :
 515-ZMSD

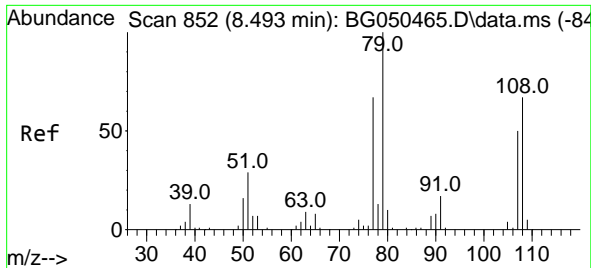
Tgt Ion	Resp	Lower	Upper
146	147511		
146	100		
148	63.8	54.0	81.0
111	45.1	34.3	51.5



#14
 1,2-Dichlorobenzene
 Concen: 49.673 ng
 RT: 8.612 min Scan# 872
 Delta R.T. -0.005 min
 Lab File: BG050636.D
 Acq: 19 Oct 2021 15:46

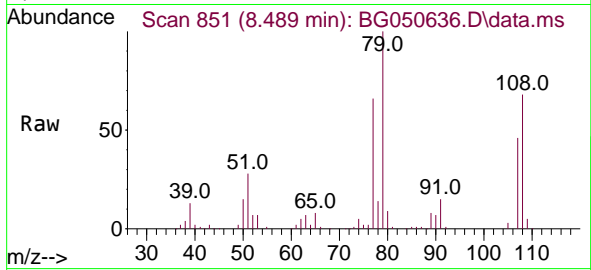
Tgt Ion	Resp	Lower	Upper
146	143061		
146	100		
148	61.8	47.5	71.3
111	48.0	39.1	58.7





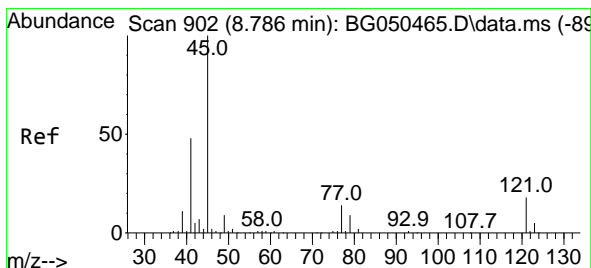
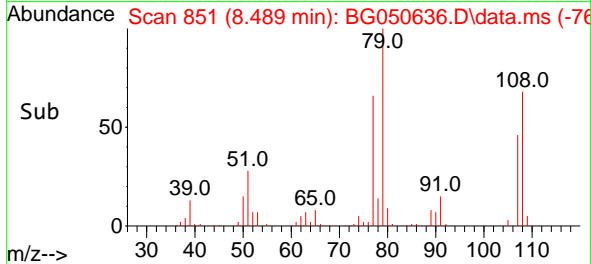
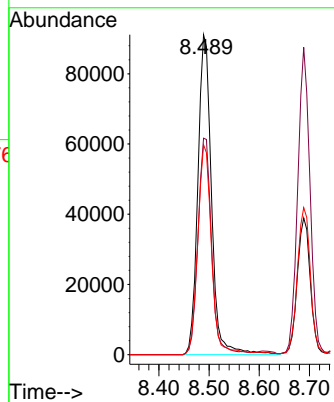
#15
 Benzyl Alcohol
 Concen: 55.923 ng
 RT: 8.489 min Scan# 851
 Delta R.T. -0.005 min
 Lab File: BG050636.D
 Acq: 19 Oct 2021 15:46

Instrument :
 BNA_G
 ClientSampled :
 515-ZMSD

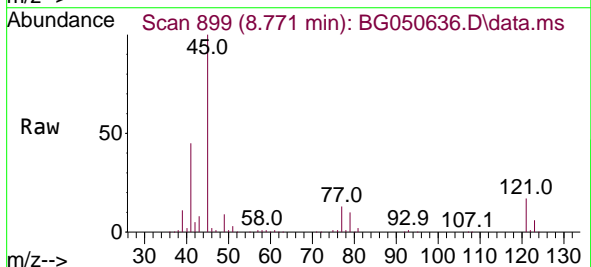


Tgt Ion: 79 Resp: 172181

Ion	Ratio	Lower	Upper
79	100		
108	67.7	48.2	72.4
77	65.6	57.3	85.9

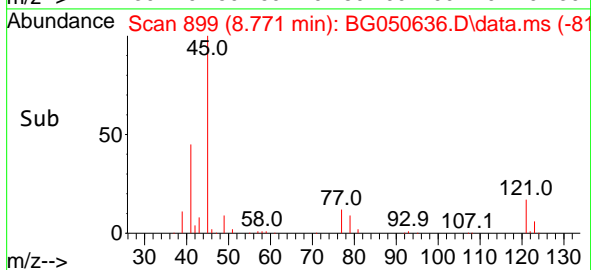
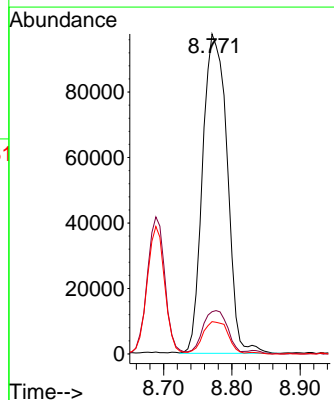


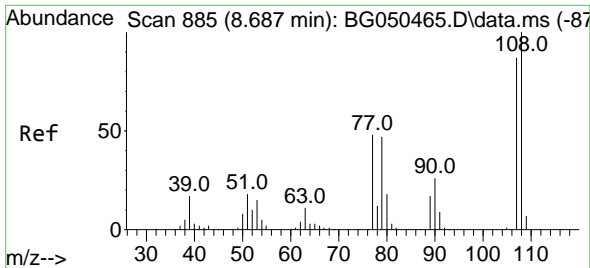
#16
 2,2'-oxybis(1-Chloropropane)
 Concen: 50.489 ng
 RT: 8.771 min Scan# 899
 Delta R.T. -0.005 min
 Lab File: BG050636.D
 Acq: 19 Oct 2021 15:46



Tgt Ion: 45 Resp: 243455

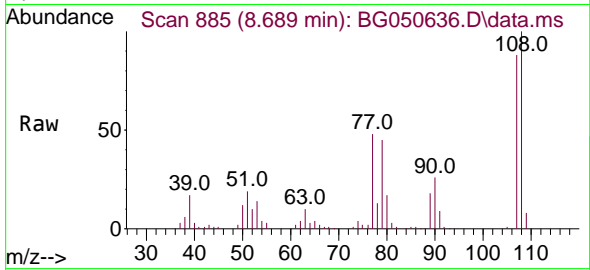
Ion	Ratio	Lower	Upper
45	100		
77	13.2	2.2	42.2
79	10.1	0.0	34.3





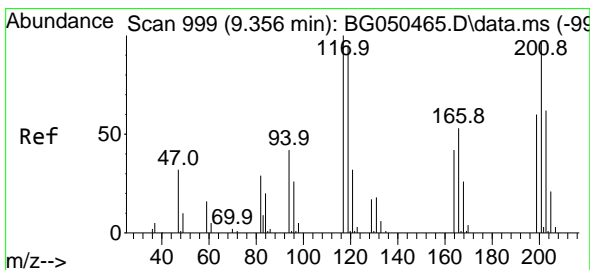
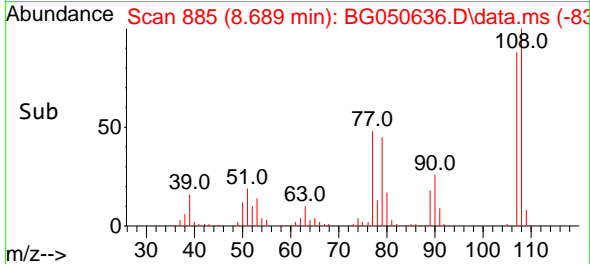
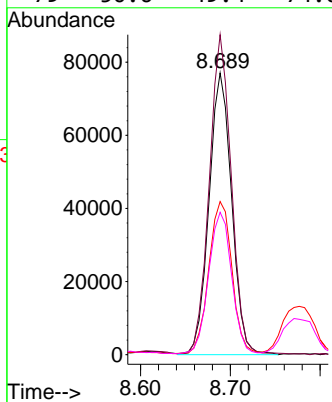
#17
 2-Methylphenol
 Concen: 54.175 ng
 RT: 8.689 min Scan# 885
 Delta R.T. 0.001 min
 Lab File: BG050636.D
 Acq: 19 Oct 2021 15:46

Instrument :
 BNA_G
 ClientSampled :
 515-ZMSD

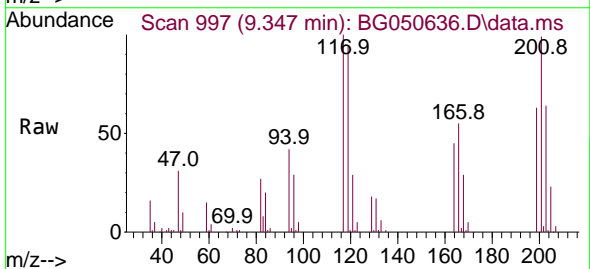


Tgt Ion:107 Resp: 135034

Ion	Ratio	Lower	Upper
107	100		
108	113.5	84.6	127.0
77	54.3	50.7	76.1
79	50.6	49.4	74.0

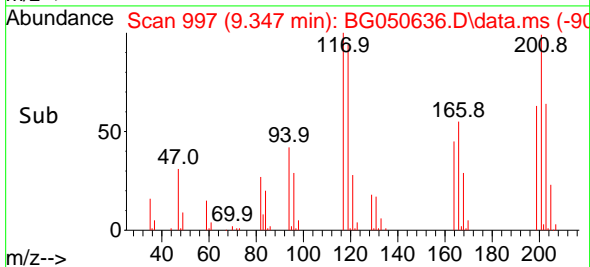
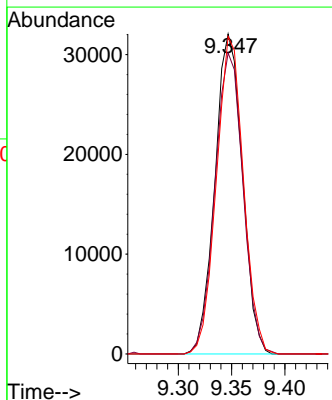


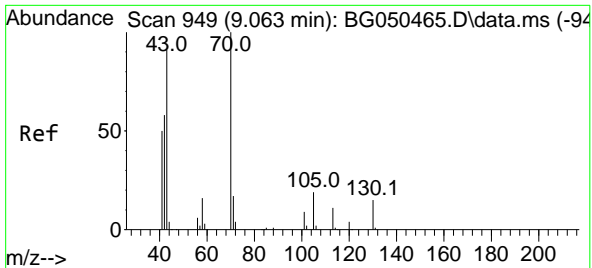
#18
 Hexachloroethane
 Concen: 50.295 ng
 RT: 9.347 min Scan# 997
 Delta R.T. -0.005 min
 Lab File: BG050636.D
 Acq: 19 Oct 2021 15:46



Tgt Ion:117 Resp: 57397

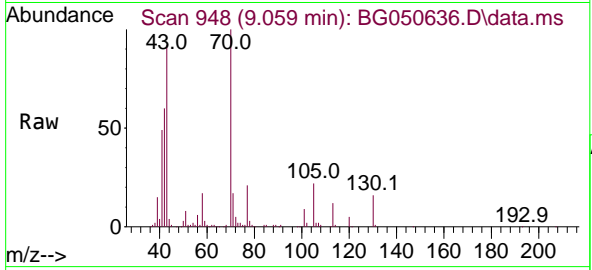
Ion	Ratio	Lower	Upper
117	100		
119	94.0	74.4	111.6
201	99.2	88.6	133.0





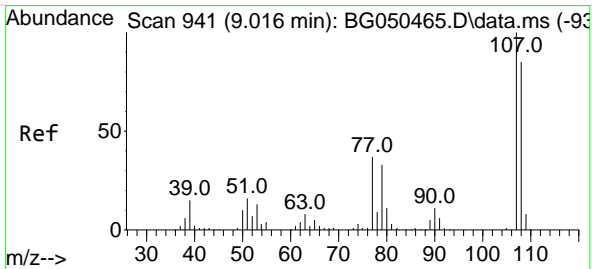
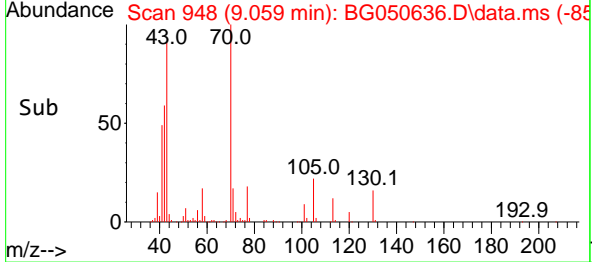
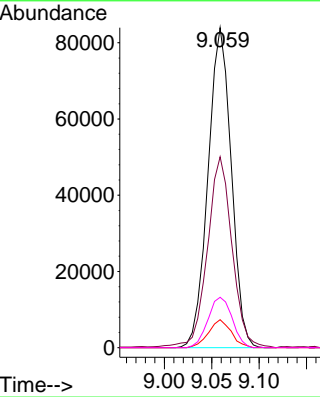
#19
 n-Nitroso-di-n-propylamine
 Concen: 50.502 ng
 RT: 9.059 min Scan# 948
 Delta R.T. 0.001 min
 Lab File: BG050636.D
 Acq: 19 Oct 2021 15:46

Instrument :
 BNA_G
ClientSampled :
 515-ZMSD

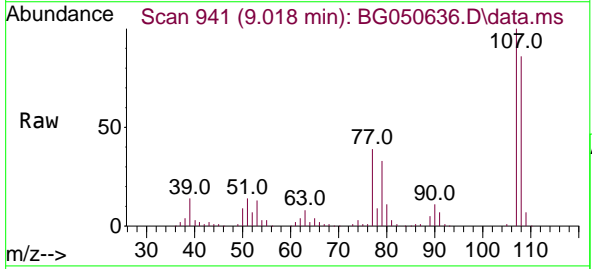


Tgt Ion: 70 Resp: 143413

Ion	Ratio	Lower	Upper
70	100		
42	59.6	54.5	81.7
101	8.8	9.0	13.6#
130	15.8	17.0	25.6#

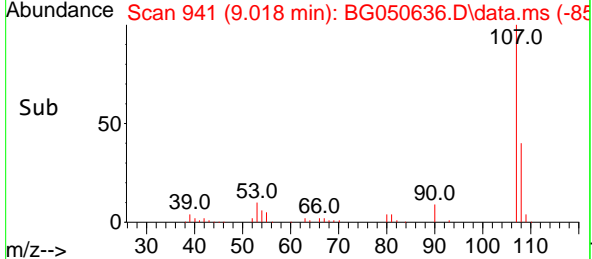
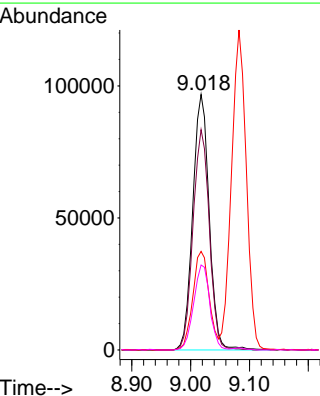


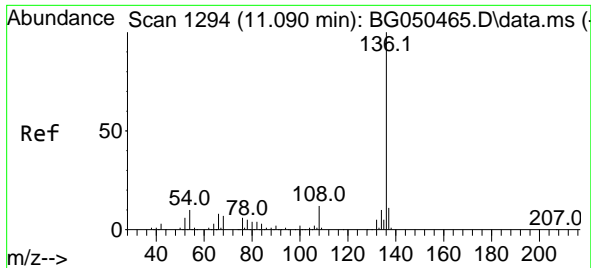
#20
 3+4-Methylphenols
 Concen: 53.511 ng
 RT: 9.018 min Scan# 941
 Delta R.T. 0.001 min
 Lab File: BG050636.D
 Acq: 19 Oct 2021 15:46



Tgt Ion: 107 Resp: 187740

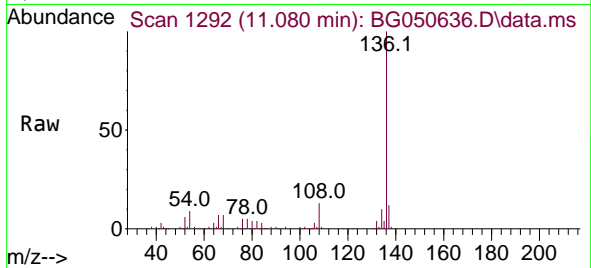
Ion	Ratio	Lower	Upper
107	100		
108	86.3	69.3	109.3
77	38.6	25.2	65.2
79	33.3	15.1	55.1





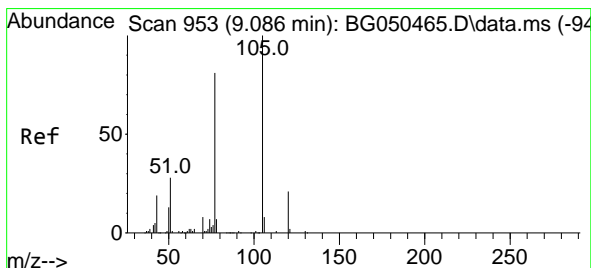
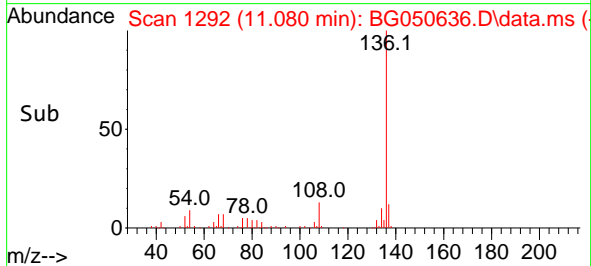
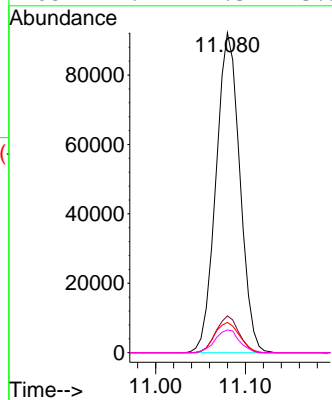
#21
 Naphthalene-d8
 Concen: 20.000 ng
 RT: 11.080 min Scan# 1292
 Delta R.T. -0.005 min
 Lab File: BG050636.D
 Acq: 19 Oct 2021 15:46

Instrument :
 BNA_G
 ClientSampled :
 515-ZMSD



Tgt Ion:136 Resp: 169710

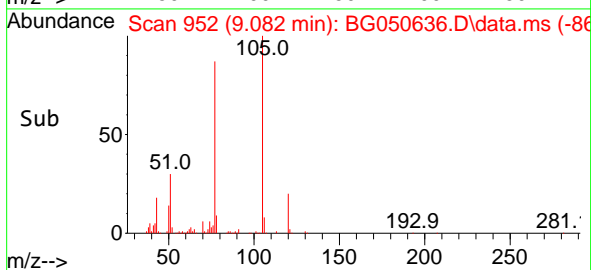
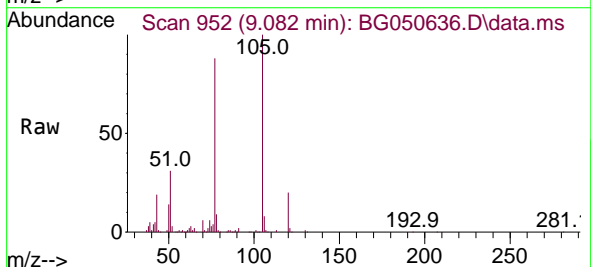
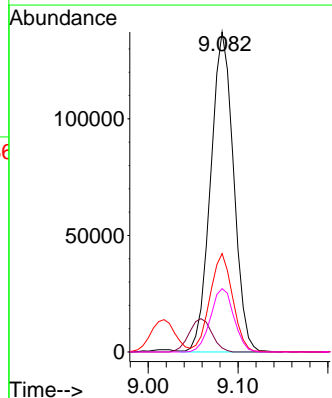
Ion	Ratio	Lower	Upper
136	100		
137	11.5	8.2	12.2
54	9.5	5.5	8.3#
68	7.1	2.3	3.5#

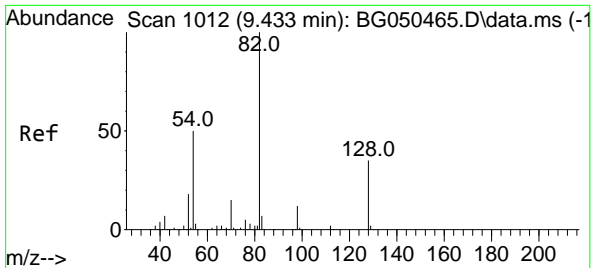


#22
 Acetophenone
 Concen: 50.406 ng
 RT: 9.082 min Scan# 952
 Delta R.T. -0.005 min
 Lab File: BG050636.D
 Acq: 19 Oct 2021 15:46

Tgt Ion:105 Resp: 243202

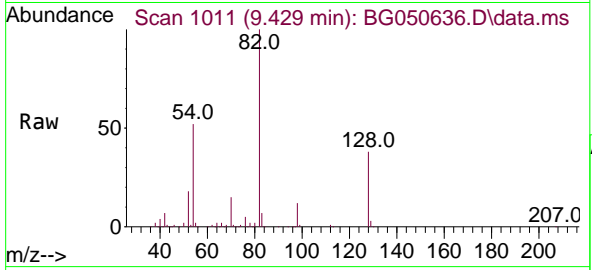
Ion	Ratio	Lower	Upper
105	100		
71	1.3	0.6	0.8#
51	30.7	26.6	40.0
120	19.8	16.2	24.4





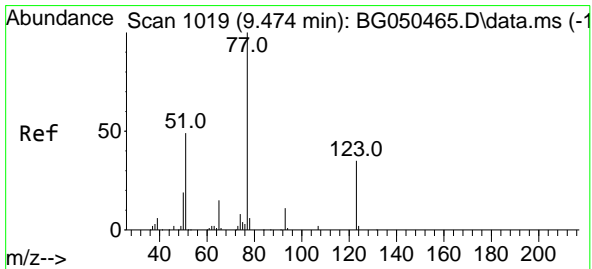
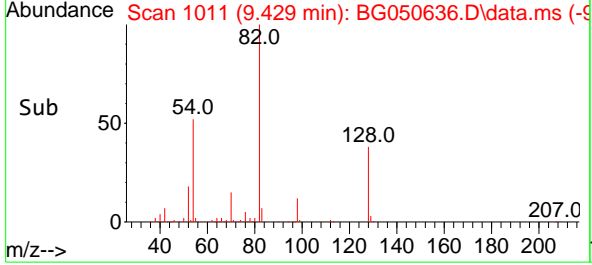
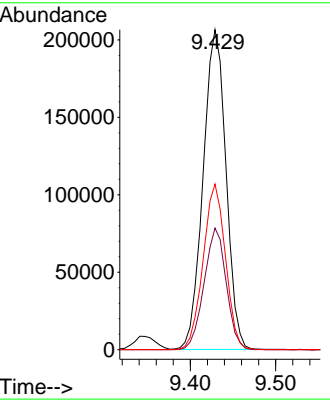
#23
 Nitrobenzene-d5
 Concen: 93.826 ng
 RT: 9.429 min Scan# 1011
 Delta R.T. 0.001 min
 Lab File: BG050636.D
 Acq: 19 Oct 2021 15:46

Instrument :
 BNA_G
 ClientSampled :
 515-ZMSD

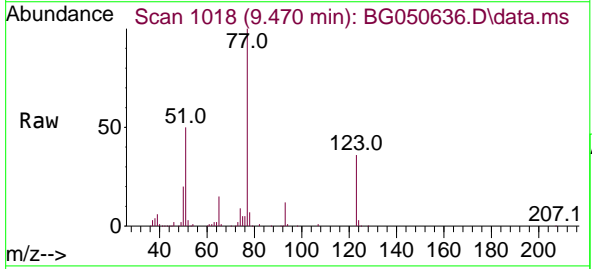


Tgt Ion: 82 Resp: 384658

Ion	Ratio	Lower	Upper
82	100		
128	38.0	29.8	44.6
54	51.7	45.8	68.8

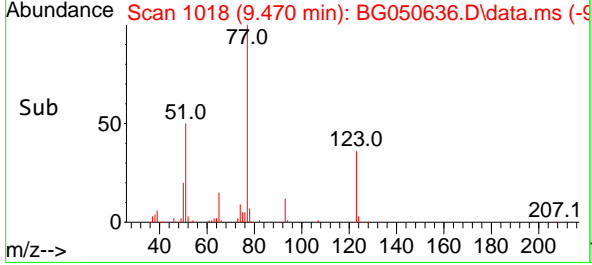
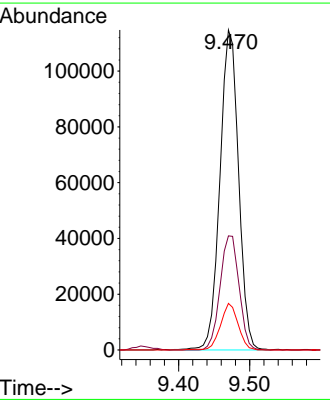


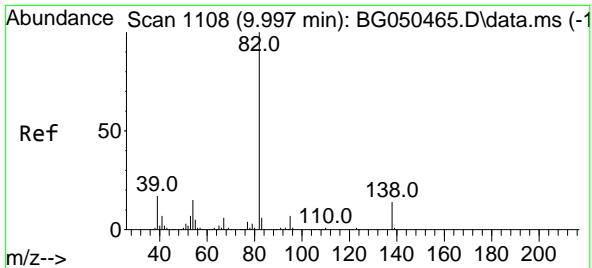
#24
 Nitrobenzene
 Concen: 51.235 ng
 RT: 9.470 min Scan# 1018
 Delta R.T. -0.005 min
 Lab File: BG050636.D
 Acq: 19 Oct 2021 15:46



Tgt Ion: 77 Resp: 208853

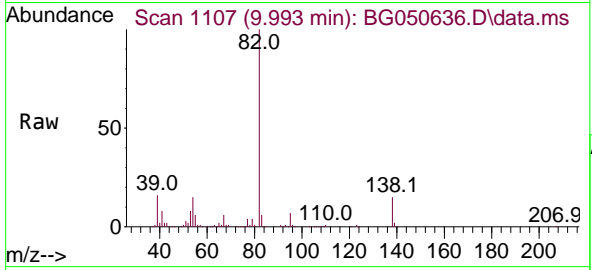
Ion	Ratio	Lower	Upper
77	100		
123	35.7	27.5	41.3
65	14.6	12.6	18.8





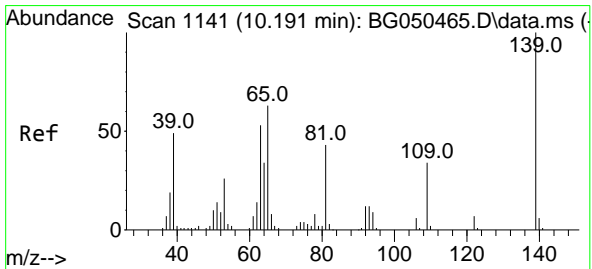
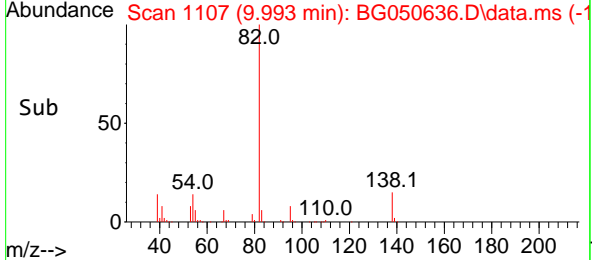
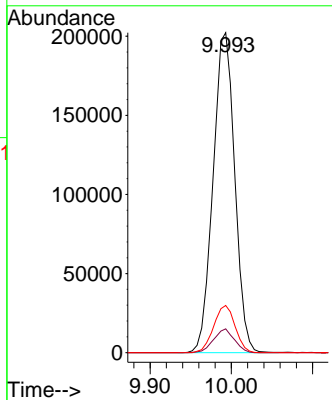
#25
 Isophorone
 Concen: 51.611 ng
 RT: 9.993 min Scan# 1107
 Delta R.T. 0.001 min
 Lab File: BG050636.D
 Acq: 19 Oct 2021 15:46

Instrument :
 BNA_G
 ClientSampled :
 515-ZMSD

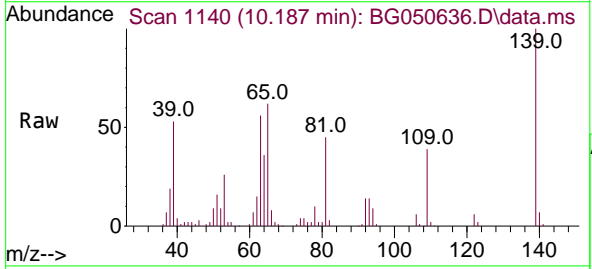


Tgt Ion: 82 Resp: 375303

Ion	Ratio	Lower	Upper
82	100		
95	7.4	8.5	12.7#
138	14.7	11.8	17.6

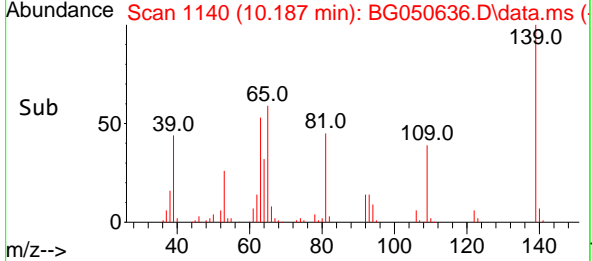
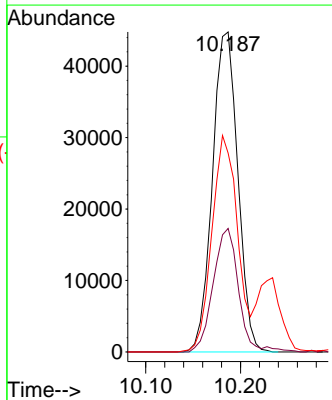


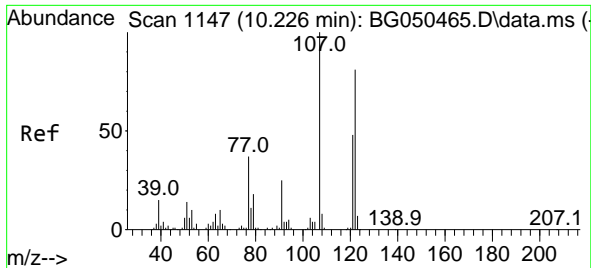
#26
 2-Nitrophenol
 Concen: 55.697 ng
 RT: 10.187 min Scan# 1140
 Delta R.T. 0.001 min
 Lab File: BG050636.D
 Acq: 19 Oct 2021 15:46



Tgt Ion: 139 Resp: 83367

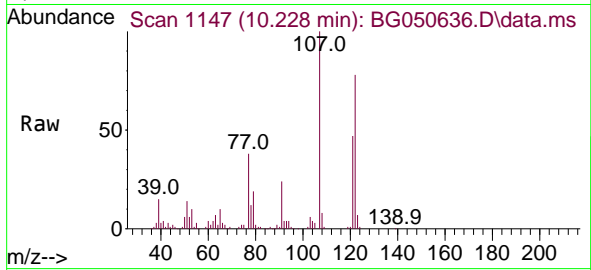
Ion	Ratio	Lower	Upper
139	100		
109	38.6	37.8	56.6
65	62.2	51.8	77.8



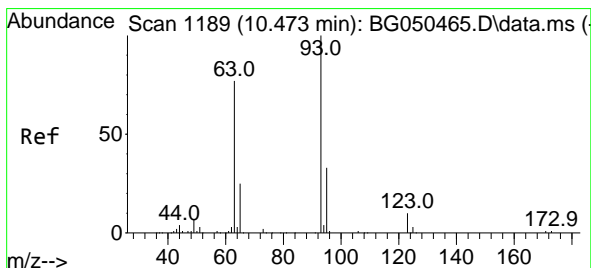
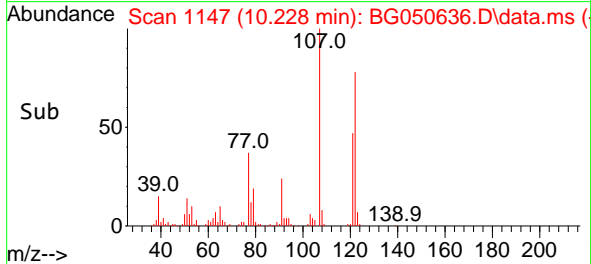
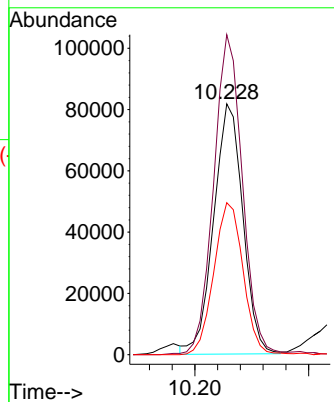


#27
 2,4-Dimethylphenol
 Concen: 56.203 ng
 RT: 10.228 min Scan# 1147
 Delta R.T. -0.005 min
 Lab File: BG050636.D
 Acq: 19 Oct 2021 15:46

Instrument :
 BNA_G
 ClientSampled :
 515-ZMSD

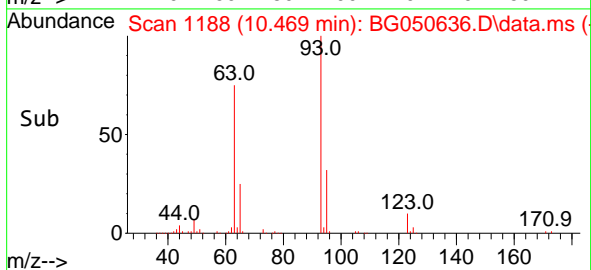
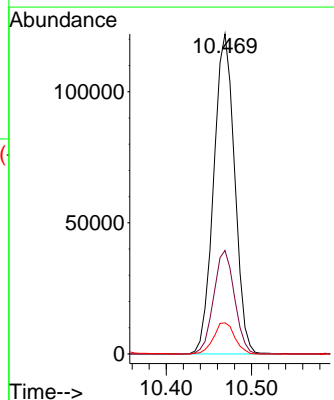
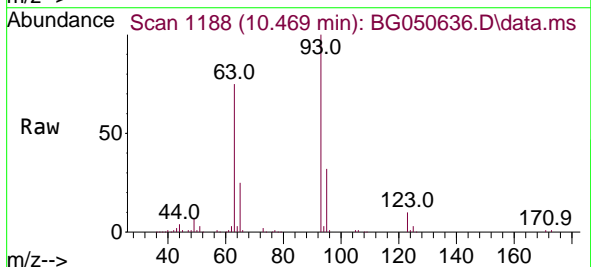


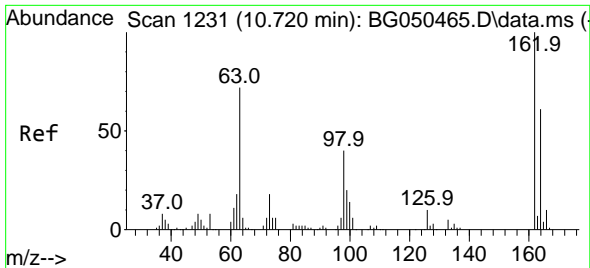
Tgt Ion:122 Resp: 145342
 Ion Ratio Lower Upper
 122 100
 107 127.5 110.1 165.1
 121 60.6 49.0 73.6



#28
 bis(2-Chloroethoxy)methane
 Concen: 50.031 ng
 RT: 10.469 min Scan# 1188
 Delta R.T. -0.005 min
 Lab File: BG050636.D
 Acq: 19 Oct 2021 15:46

Tgt Ion: 93 Resp: 208020
 Ion Ratio Lower Upper
 93 100
 95 32.4 22.2 33.4
 123 9.7 8.8 13.2

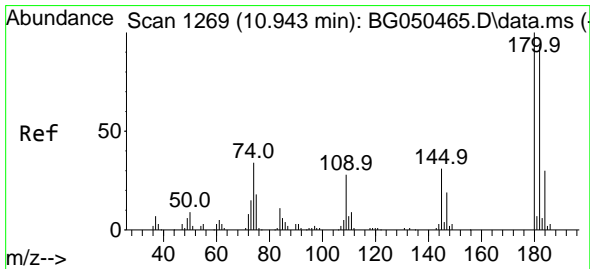
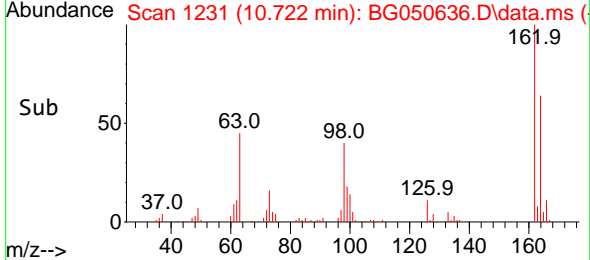
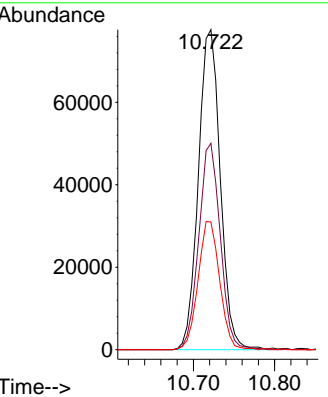
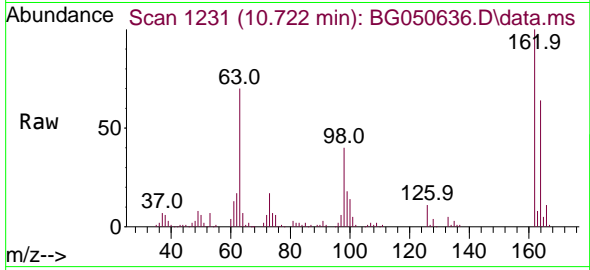




#29
 2,4-Dichlorophenol
 Concen: 55.114 ng
 RT: 10.722 min Scan# 1231
 Delta R.T. 0.001 min
 Lab File: BG050636.D
 Acq: 19 Oct 2021 15:46

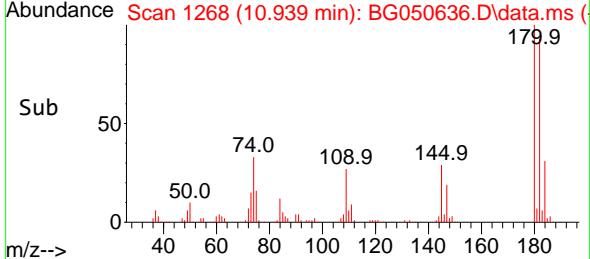
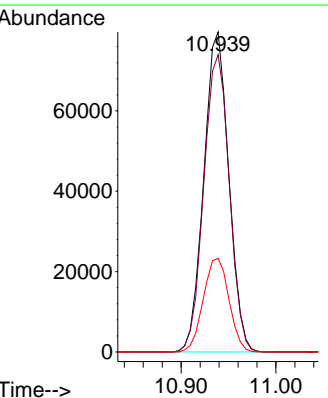
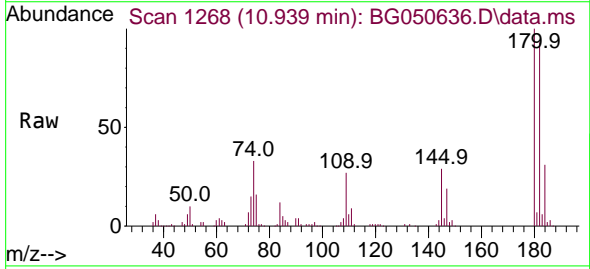
Instrument :
 BNA_G
 ClientSampled :
 515-ZMSD

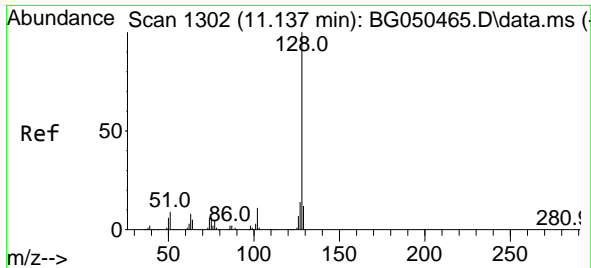
Tgt Ion	Resp	Lower	Upper
162	145267		
162	100		
164	64.5	39.4	79.4
98	39.9	18.7	58.7



#30
 1,2,4-Trichlorobenzene
 Concen: 48.693 ng
 RT: 10.939 min Scan# 1268
 Delta R.T. -0.005 min
 Lab File: BG050636.D
 Acq: 19 Oct 2021 15:46

Tgt Ion	Resp	Lower	Upper
180	145791		
180	100		
182	92.9	78.9	118.3
145	29.3	26.2	39.4

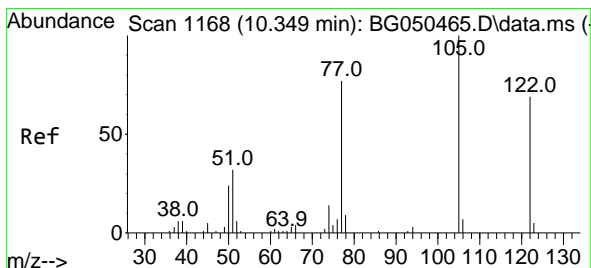
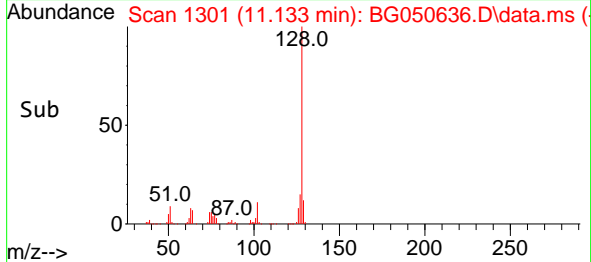
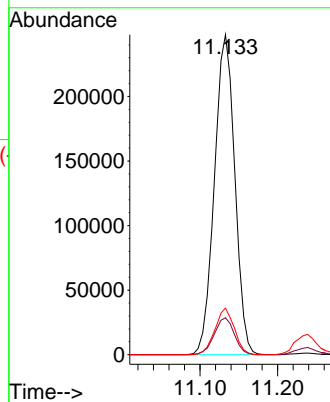
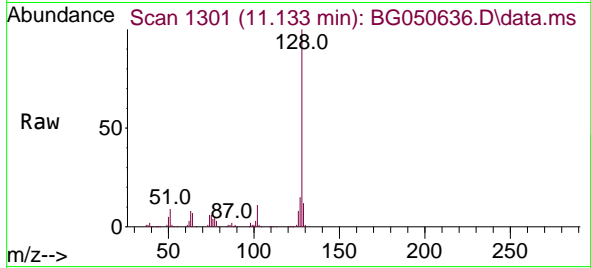




#31
 Naphthalene
 Concen: 49.838 ng
 RT: 11.133 min Scan# 1301
 Delta R.T. -0.005 min
 Lab File: BG050636.D
 Acq: 19 Oct 2021 15:46

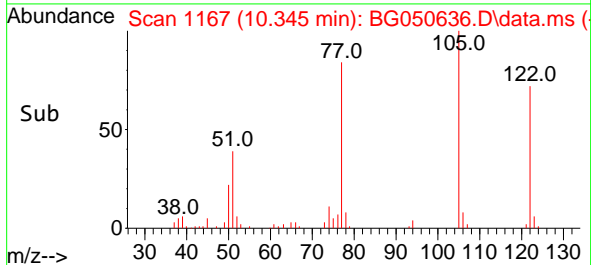
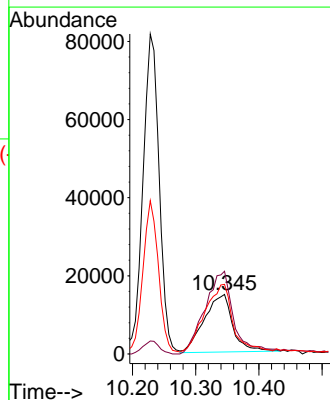
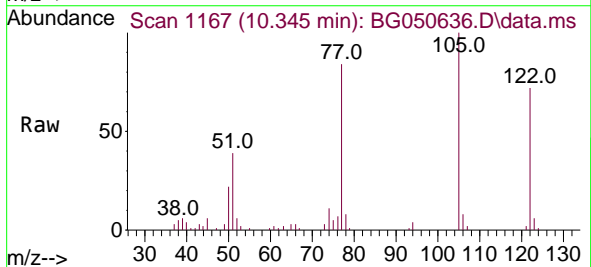
Instrument :
 BNA_G
 ClientSampled :
 515-ZMSD

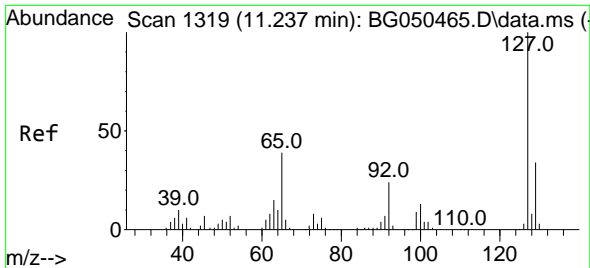
Tgt Ion:128 Resp: 452732
 Ion Ratio Lower Upper
 128 100
 129 11.5 8.5 12.7
 127 14.6 10.2 15.4



#32
 Benzoic acid
 Concen: 24.175 ng
 RT: 10.345 min Scan# 1167
 Delta R.T. -0.010 min
 Lab File: BG050636.D
 Acq: 19 Oct 2021 15:46

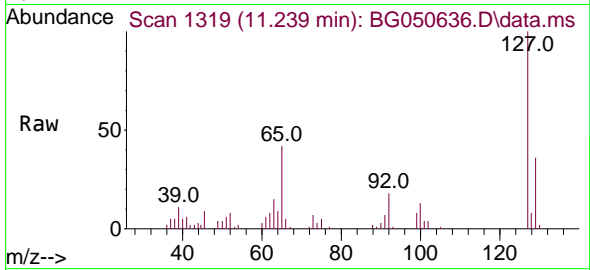
Tgt Ion:122 Resp: 46398
 Ion Ratio Lower Upper
 122 100
 105 138.9 92.3 132.3#
 77 116.9 66.5 106.5#





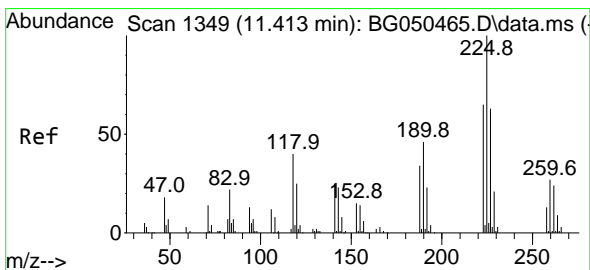
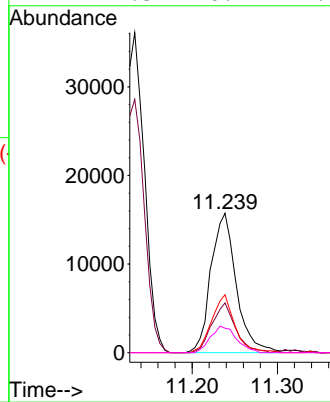
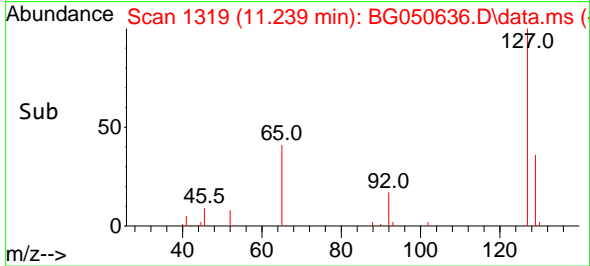
#33
 4-Chloroaniline
 Concen: 8.549 ng
 RT: 11.239 min Scan# 1319
 Delta R.T. 0.001 min
 Lab File: BG050636.D
 Acq: 19 Oct 2021 15:46

Instrument :
 BNA_G
 ClientSampled :
 515-ZMSD

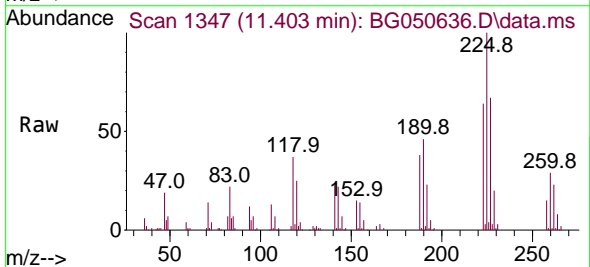


Tgt Ion:127 Resp: 32585

Ion	Ratio	Lower	Upper
127	100		
129	35.7	26.7	40.1
65	41.6	32.8	49.2
92	17.5	16.2	24.4

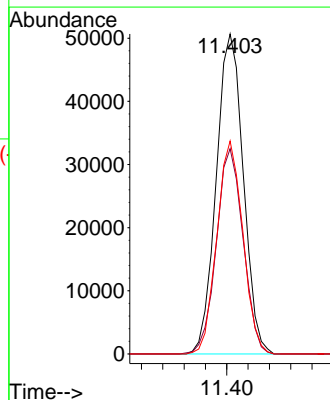
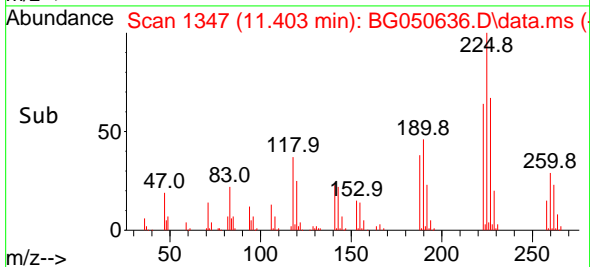


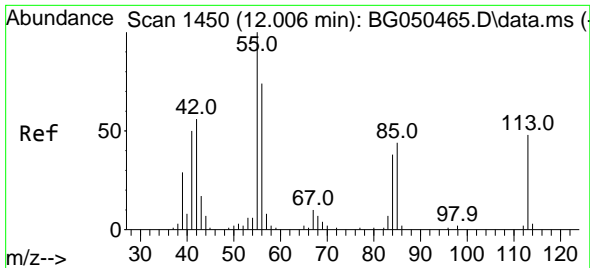
#34
 Hexachlorobutadiene
 Concen: 47.468 ng
 RT: 11.403 min Scan# 1347
 Delta R.T. -0.005 min
 Lab File: BG050636.D
 Acq: 19 Oct 2021 15:46



Tgt Ion:225 Resp: 89225

Ion	Ratio	Lower	Upper
225	100		
223	64.1	49.8	74.8
227	66.5	46.4	69.6

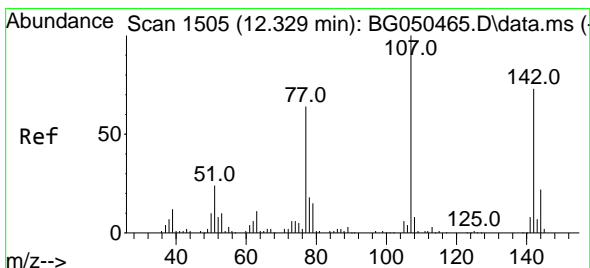
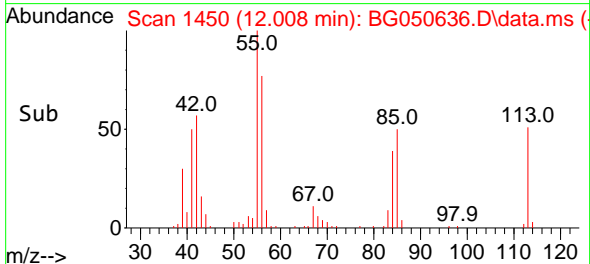
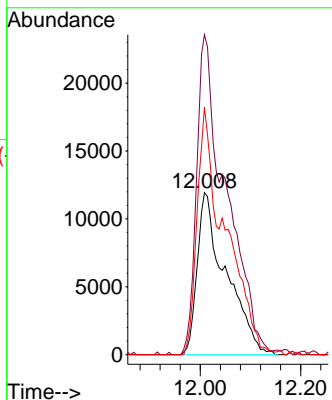
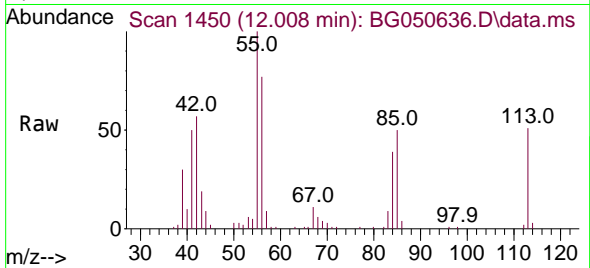




#35
 Caprolactam
 Concen: 46.887 ng
 RT: 12.008 min Scan# 1450
 Delta R.T. 0.001 min
 Lab File: BG050636.D
 Acq: 19 Oct 2021 15:46

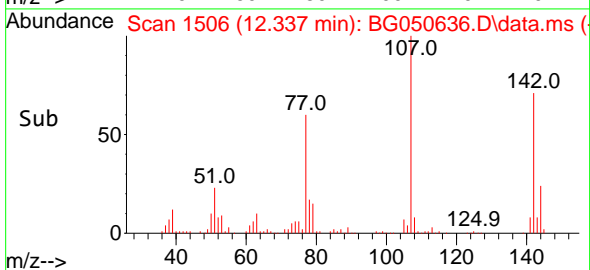
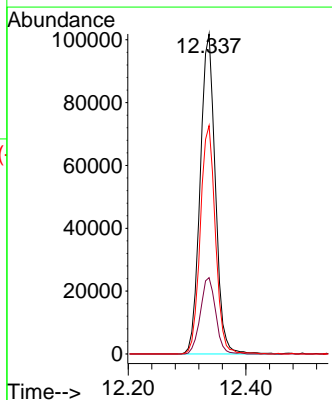
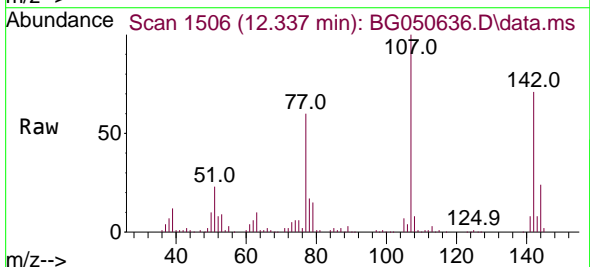
Instrument :
 BNA_G
 ClientSampled :
 515-ZMSD

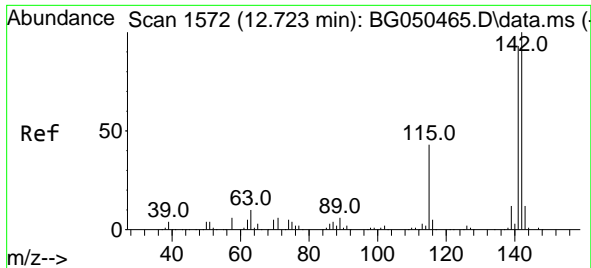
Tgt Ion:113 Resp: 47298
 Ion Ratio Lower Upper
 113 100
 55 197.5 113.8 153.8#
 56 152.7 105.6 145.6#



#36
 4-Chloro-3-methylphenol
 Concen: 55.269 ng
 RT: 12.337 min Scan# 1506
 Delta R.T. 0.001 min
 Lab File: BG050636.D
 Acq: 19 Oct 2021 15:46

Tgt Ion:107 Resp: 182085
 Ion Ratio Lower Upper
 107 100
 144 23.8 24.8 37.2#
 142 71.4 62.2 93.4

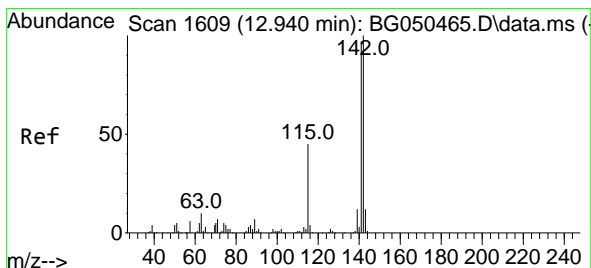
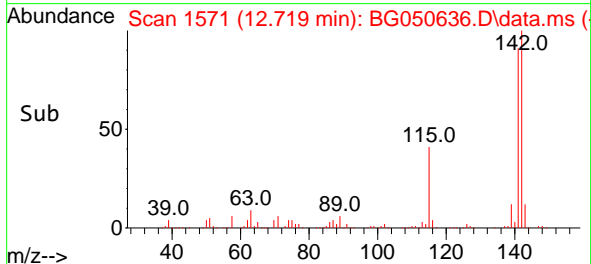
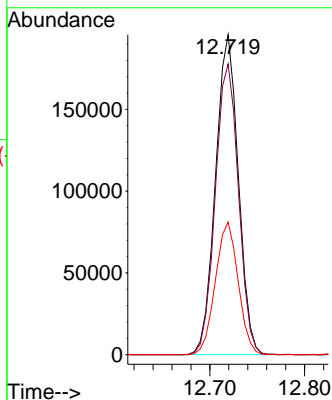
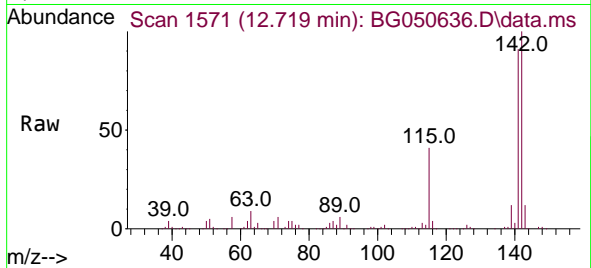




#37
 2-Methylnaphthalene
 Concen: 52.227 ng
 RT: 12.719 min Scan# 1571
 Delta R.T. 0.001 min
 Lab File: BG050636.D
 Acq: 19 Oct 2021 15:46

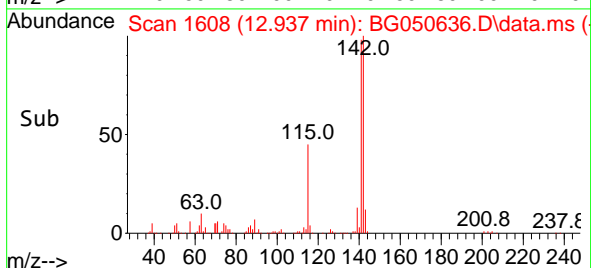
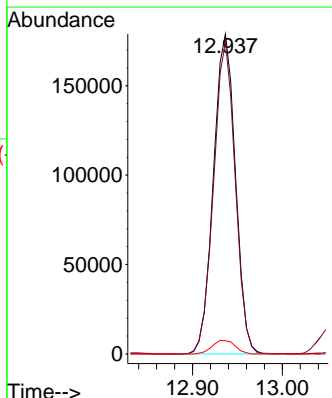
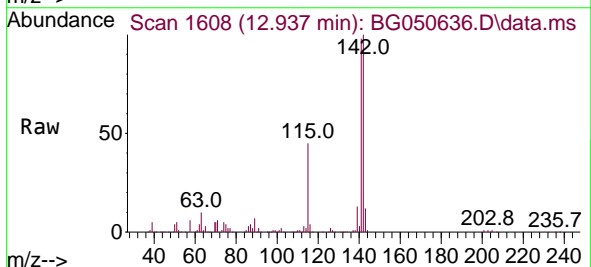
Instrument :
 BNA_G
ClientSampled :
 515-ZMSD

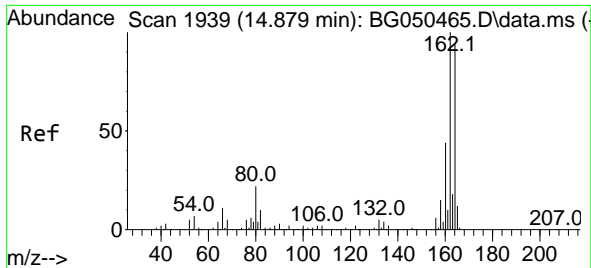
Tgt Ion	Resp	Lower	Upper
142	327350		
141	90.9	68.8	103.2
115	41.5	36.4	54.6



#38
 1-Methylnaphthalene
 Concen: 50.024 ng
 RT: 12.937 min Scan# 1608
 Delta R.T. -0.005 min
 Lab File: BG050636.D
 Acq: 19 Oct 2021 15:46

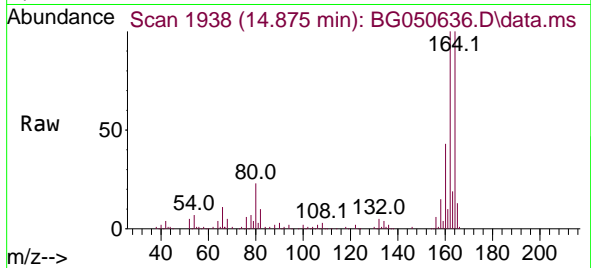
Tgt Ion	Resp	Lower	Upper
142	304036		
141	97.6	70.6	106.0
116	4.1	4.0	6.0



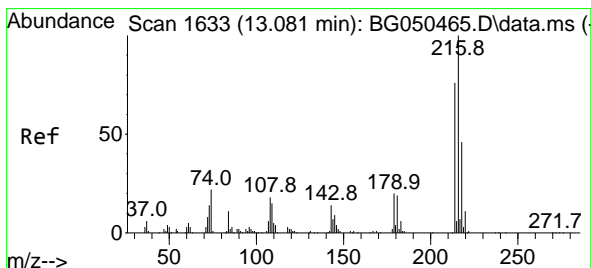
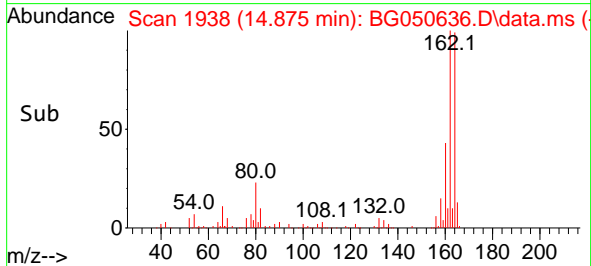
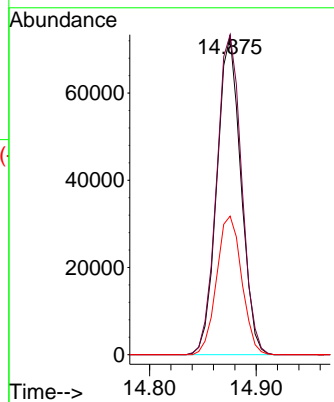


#39
 Acenaphthene-d10
 Concen: 20.000 ng
 RT: 14.875 min Scan# 1938
 Delta R.T. 0.001 min
 Lab File: BG050636.D
 Acq: 19 Oct 2021 15:46

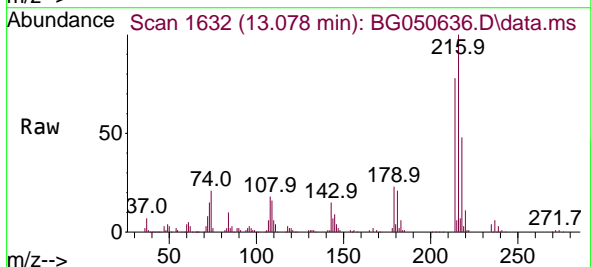
Instrument :
 BNA_G
 ClientSampled :
 515-ZMSD



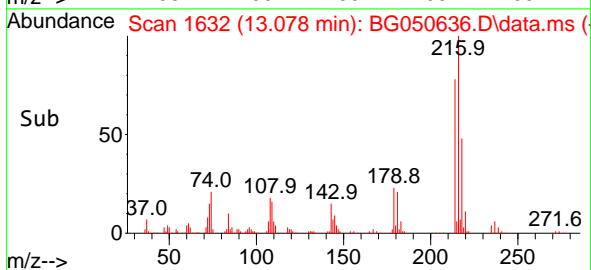
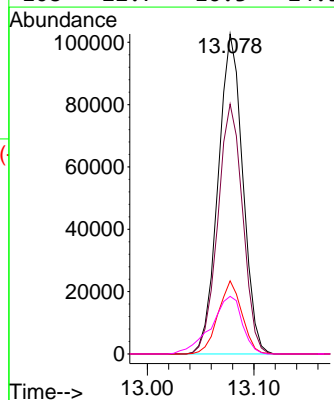
Tgt Ion:164 Resp: 113805
 Ion Ratio Lower Upper
 164 100
 162 100.4 81.4 122.0
 160 43.5 34.9 52.3

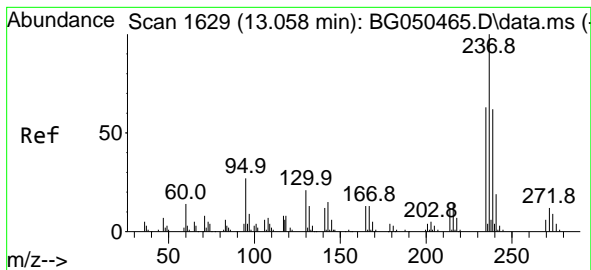


#40
 1,2,4,5-Tetrachlorobenzene
 Concen: 48.966 ng
 RT: 13.078 min Scan# 1632
 Delta R.T. -0.005 min
 Lab File: BG050636.D
 Acq: 19 Oct 2021 15:46



Tgt Ion:216 Resp: 164561
 Ion Ratio Lower Upper
 216 100
 214 78.8 61.4 92.2
 179 22.0 17.3 25.9
 108 22.7 16.3 24.5



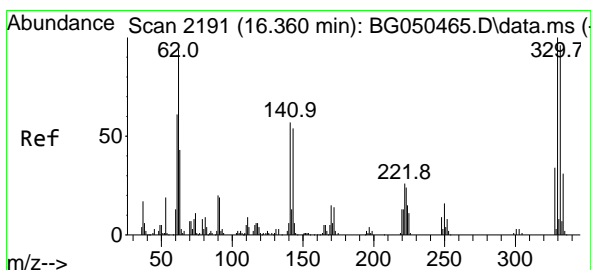
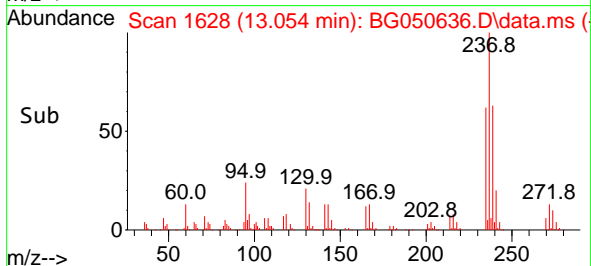
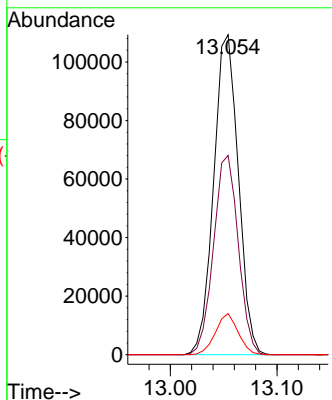
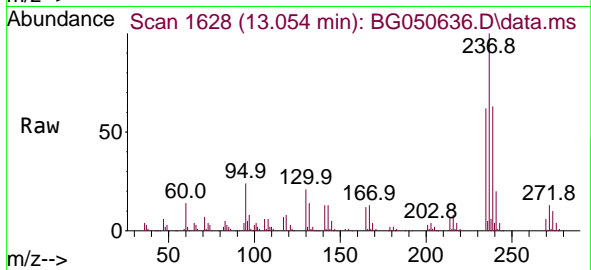


#41
 Hexachlorocyclopentadiene
 Concen: 90.360 ng
 RT: 13.054 min Scan# 1628
 Delta R.T. 0.001 min
 Lab File: BG050636.D
 Acq: 19 Oct 2021 15:46

Instrument :
 BNA_G
 ClientSampled :
 515-ZMSD

Tgt Ion:237 Resp: 175504

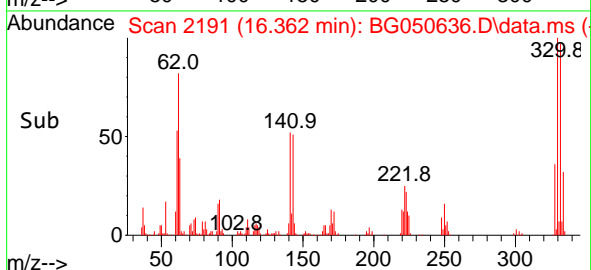
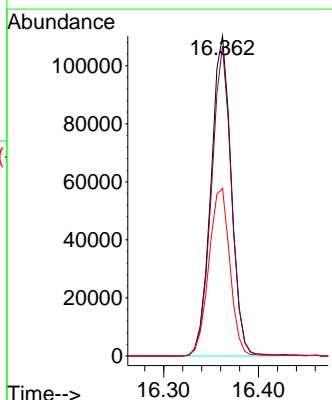
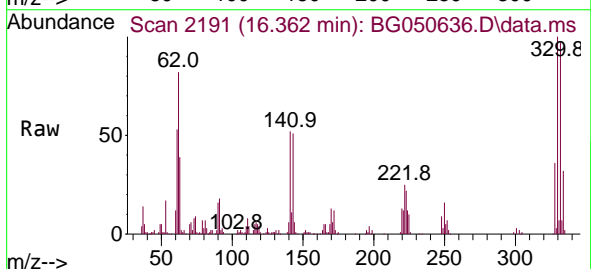
Ion	Ratio	Lower	Upper
237	100		
235	62.2	36.6	76.6
272	12.9	0.0	32.5

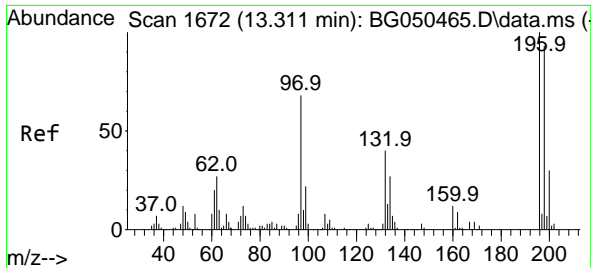


#42
 2,4,6-Tribromophenol
 Concen: 151.024 ng
 RT: 16.362 min Scan# 2191
 Delta R.T. 0.001 min
 Lab File: BG050636.D
 Acq: 19 Oct 2021 15:46

Tgt Ion:330 Resp: 163936

Ion	Ratio	Lower	Upper
330	100		
332	95.5	77.3	115.9
141	54.4	35.6	53.4#

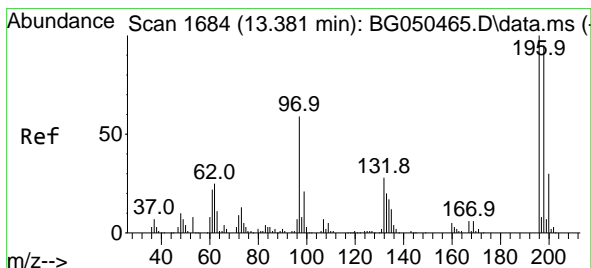
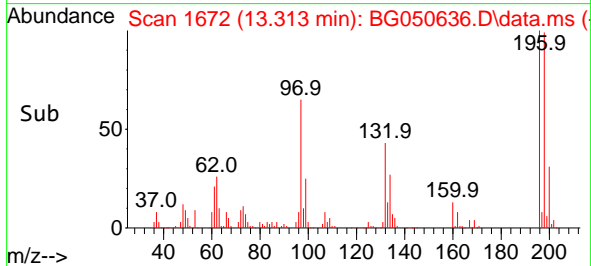
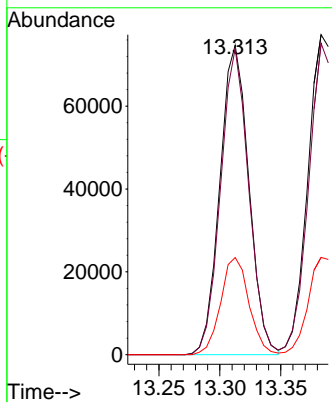
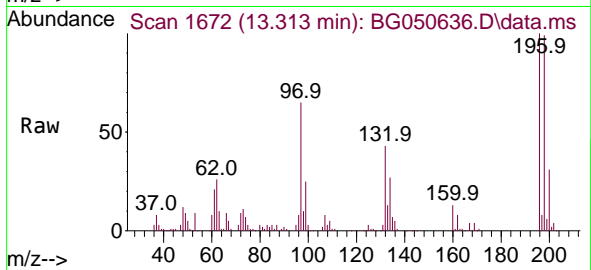




#43
 2,4,6-Trichlorophenol
 Concen: 52.200 ng
 RT: 13.313 min Scan# 1672
 Delta R.T. 0.001 min
 Lab File: BG050636.D
 Acq: 19 Oct 2021 15:46

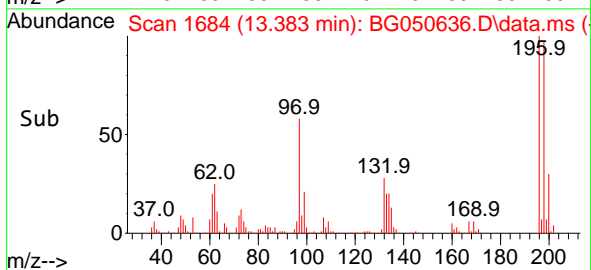
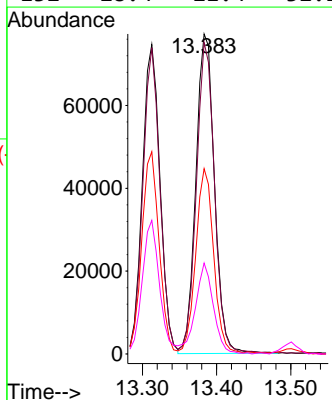
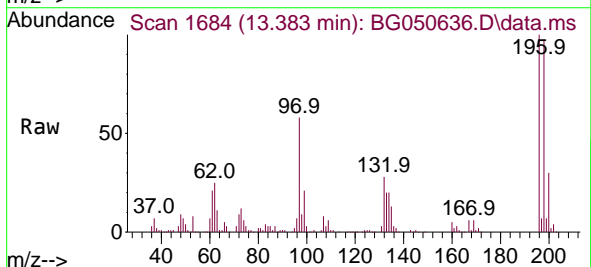
Instrument :
 BNA_G
 ClientSampled :
 515-ZMSD

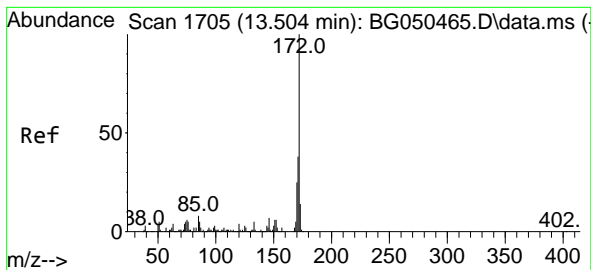
Tgt Ion:196 Resp: 123620
 Ion Ratio Lower Upper
 196 100
 198 99.0 82.1 123.1
 200 31.4 23.8 35.8



#44
 2,4,5-Trichlorophenol
 Concen: 54.356 ng
 RT: 13.383 min Scan# 1684
 Delta R.T. -0.005 min
 Lab File: BG050636.D
 Acq: 19 Oct 2021 15:46

Tgt Ion:196 Resp: 134583
 Ion Ratio Lower Upper
 196 100
 198 97.3 87.4 131.0
 97 57.9 43.3 64.9
 132 28.4 21.4 32.2

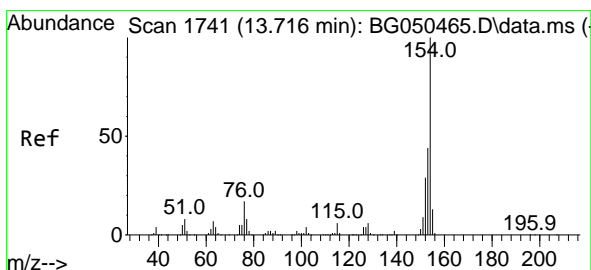
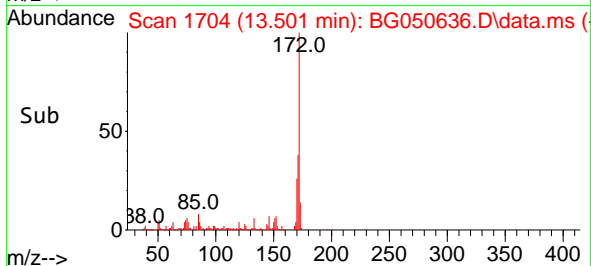
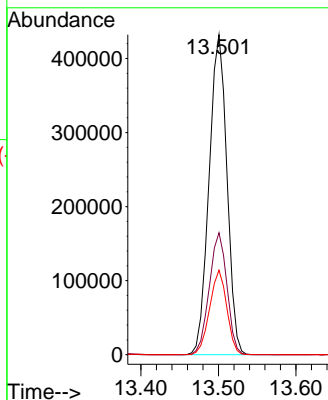
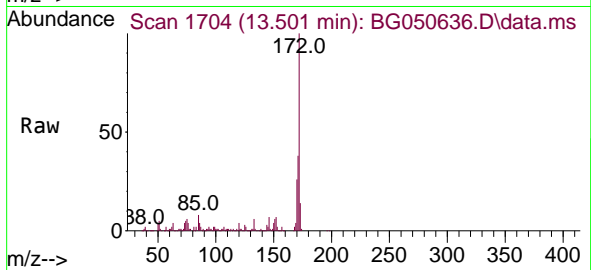




#45
 2-Fluorobiphenyl
 Concen: 91.426 ng
 RT: 13.501 min Scan# 1704
 Delta R.T. -0.005 min
 Lab File: BG050636.D
 Acq: 19 Oct 2021 15:46

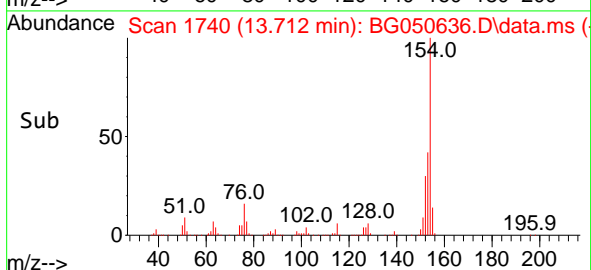
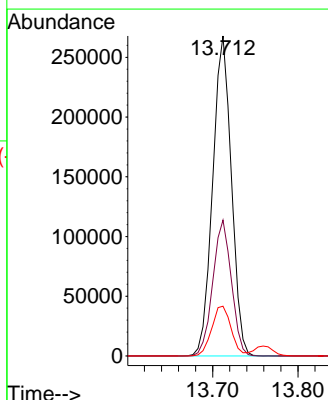
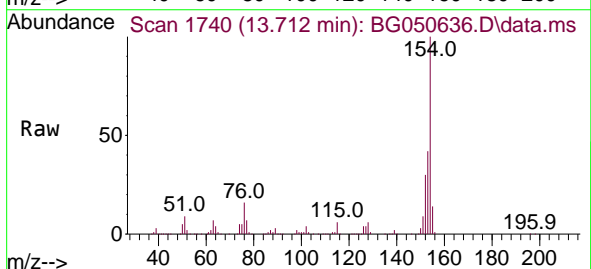
Instrument :
 BNA_G
 ClientSampled :
 515-ZMSD

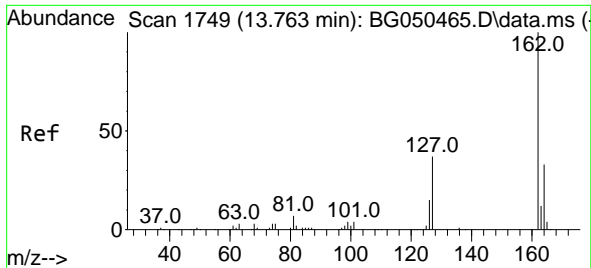
Tgt Ion	Resp	Lower	Upper
172	691332		
171	38.1	28.6	43.0
170	26.4	18.6	27.8



#46
 1,1'-Biphenyl
 Concen: 49.176 ng
 RT: 13.712 min Scan# 1740
 Delta R.T. 0.001 min
 Lab File: BG050636.D
 Acq: 19 Oct 2021 15:46

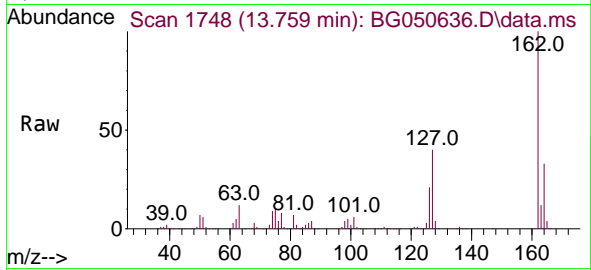
Tgt Ion	Resp	Lower	Upper
154	408205		
153	42.4	20.5	60.5
76	15.5	0.0	29.3



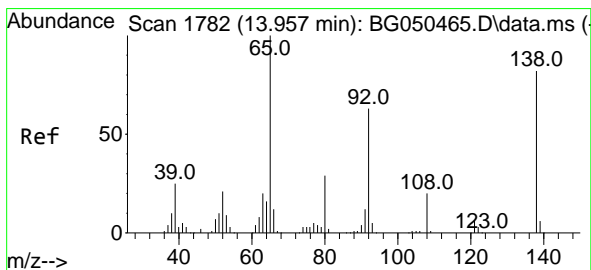
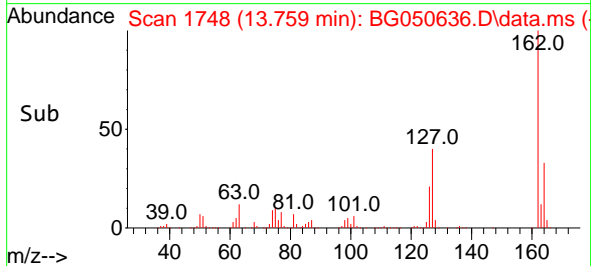
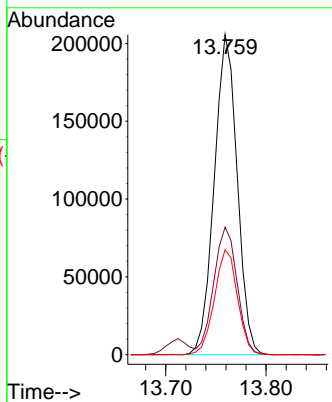


#47
 2-Chloronaphthalene
 Concen: 51.205 ng
 RT: 13.759 min Scan# 1748
 Delta R.T. -0.005 min
 Lab File: BG050636.D
 Acq: 19 Oct 2021 15:46

Instrument :
 BNA_G
 ClientSampled :
 515-ZMSD

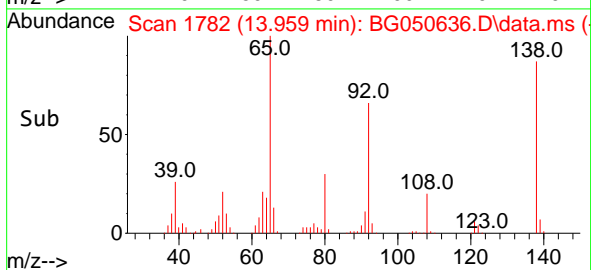
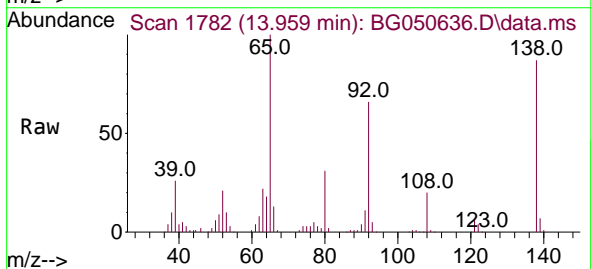
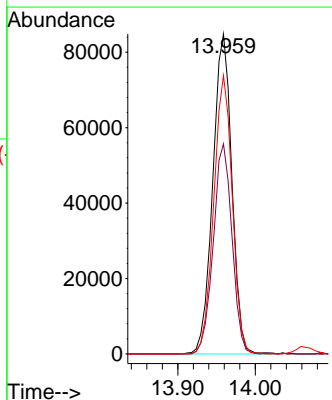


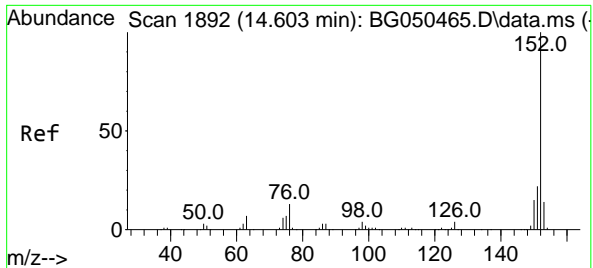
Tgt Ion:162 Resp: 326377
 Ion Ratio Lower Upper
 162 100
 127 39.9 32.7 49.1
 164 32.8 27.0 40.4



#48
 2-Nitroaniline
 Concen: 57.036 ng
 RT: 13.959 min Scan# 1782
 Delta R.T. 0.001 min
 Lab File: BG050636.D
 Acq: 19 Oct 2021 15:46

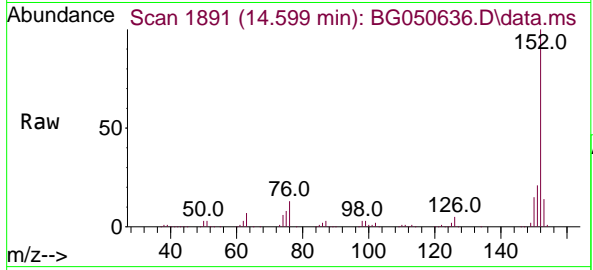
Tgt Ion: 65 Resp: 144617
 Ion Ratio Lower Upper
 65 100
 92 65.6 47.2 70.8
 138 87.0 68.0 102.0



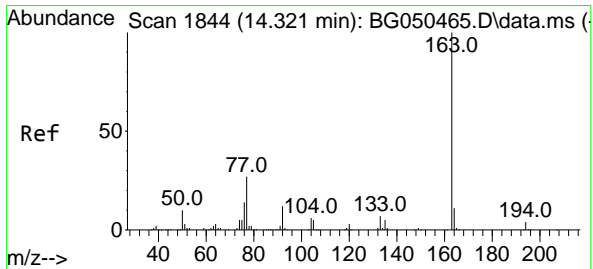
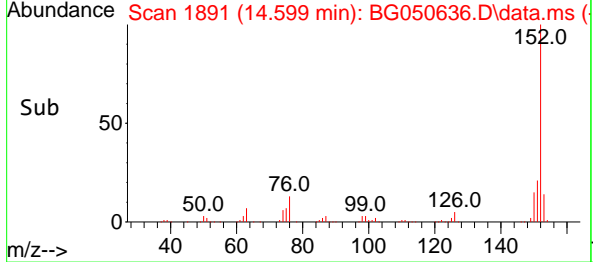
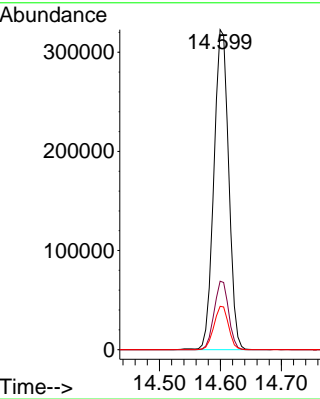


#49
 Acenaphthylene
 Concen: 52.147 ng
 RT: 14.599 min Scan# 1891
 Delta R.T. -0.005 min
 Lab File: BG050636.D
 Acq: 19 Oct 2021 15:46

Instrument :
 BNA_G
ClientSampleId :
 515-ZMSD

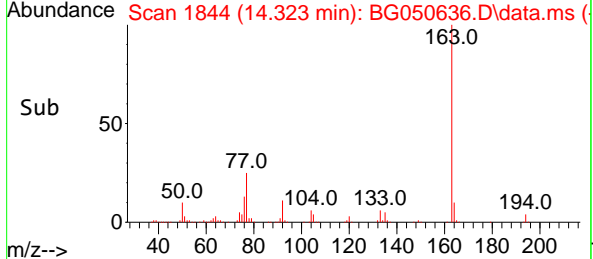
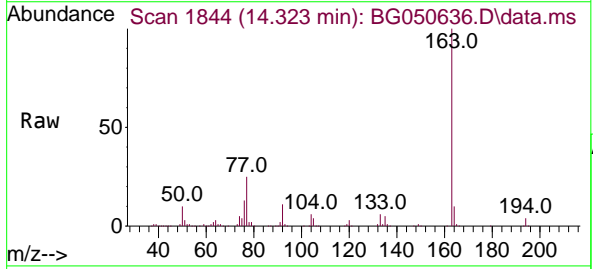
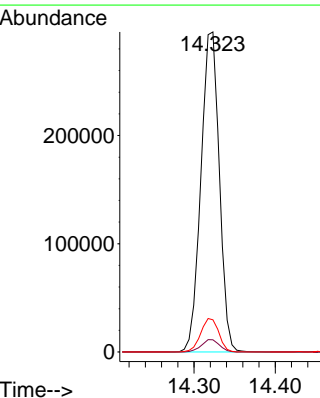


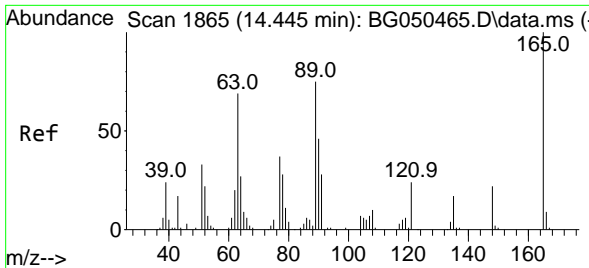
Tgt Ion:152 Resp: 544616
 Ion Ratio Lower Upper
 152 100
 151 21.4 18.2 27.4
 153 13.5 11.7 17.5



#50
 Dimethylphthalate
 Concen: 54.010 ng
 RT: 14.323 min Scan# 1844
 Delta R.T. 0.001 min
 Lab File: BG050636.D
 Acq: 19 Oct 2021 15:46

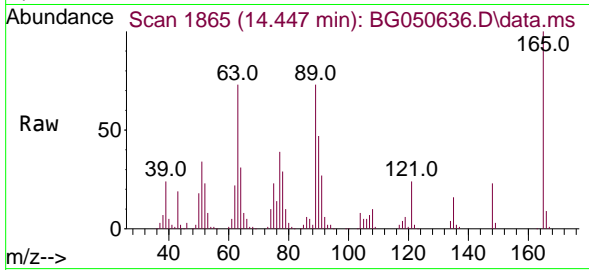
Tgt Ion:163 Resp: 464602
 Ion Ratio Lower Upper
 163 100
 194 3.8 3.0 4.6
 164 10.1 8.6 12.8





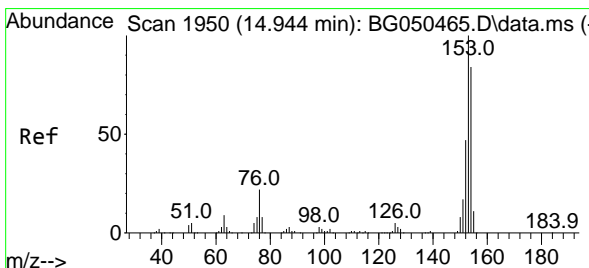
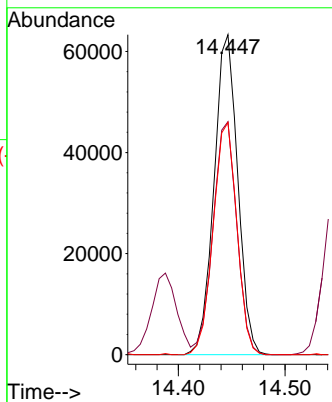
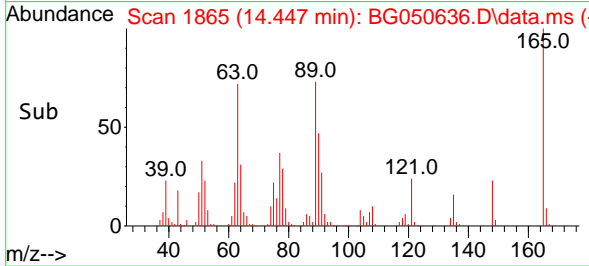
#51
 2,6-Dinitrotoluene
 Concen: 56.627 ng
 RT: 14.447 min Scan# 1865
 Delta R.T. 0.001 min
 Lab File: BG050636.D
 Acq: 19 Oct 2021 15:46

Instrument :
 BNA_G
 ClientSampled :
 515-ZMSD

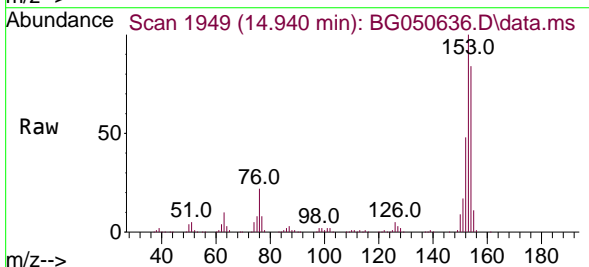


Tgt Ion:165 Resp: 97567

Ion	Ratio	Lower	Upper
165	100		
63	72.8	63.3	94.9
89	72.5	63.4	95.0

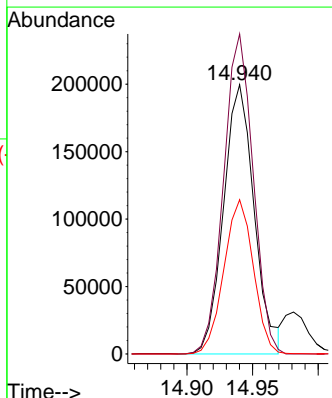
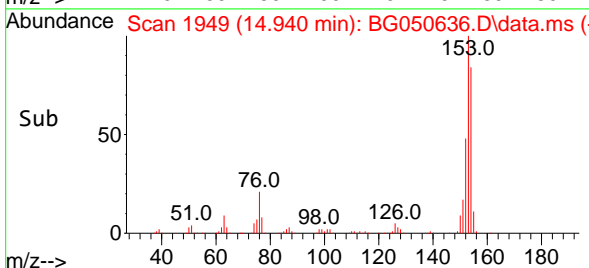


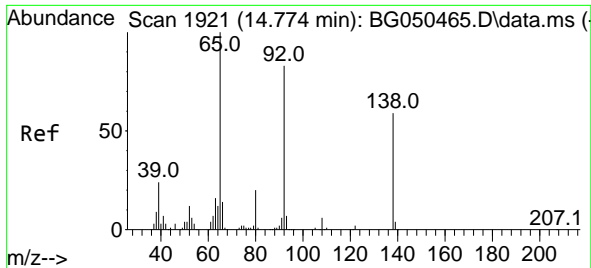
#52
 Acenaphthene
 Concen: 48.393 ng
 RT: 14.940 min Scan# 1949
 Delta R.T. -0.005 min
 Lab File: BG050636.D
 Acq: 19 Oct 2021 15:46



Tgt Ion:154 Resp: 324771

Ion	Ratio	Lower	Upper
154	100		
153	118.9	87.0	130.4
152	57.3	40.1	60.1

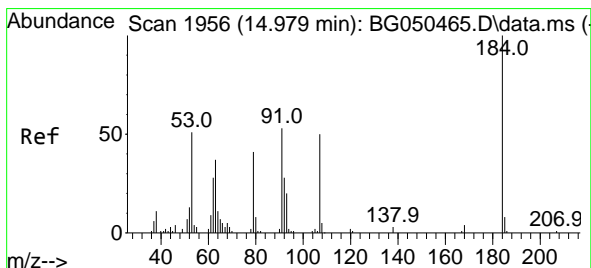
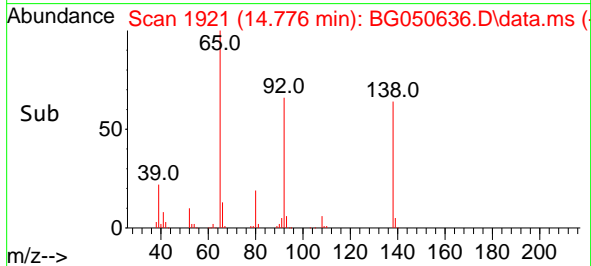
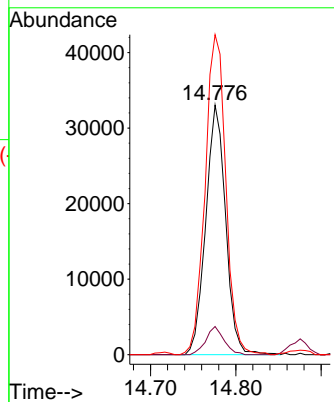
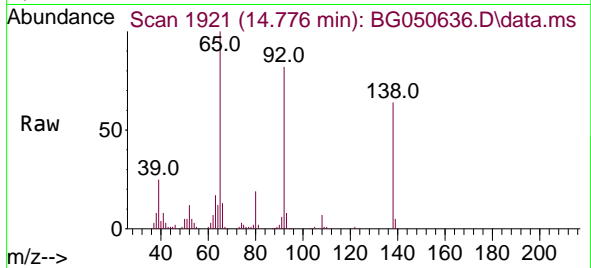




#53
 3-Nitroaniline
 Concen: 26.290 ng
 RT: 14.776 min Scan# 1921
 Delta R.T. -0.005 min
 Lab File: BG050636.D
 Acq: 19 Oct 2021 15:46

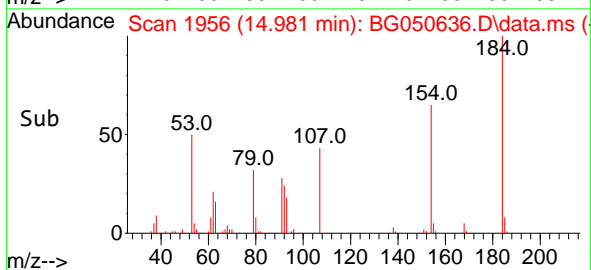
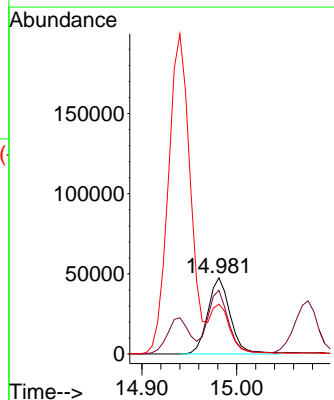
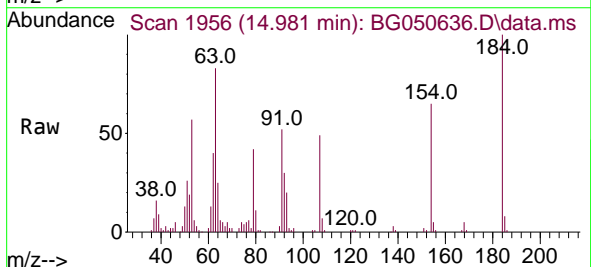
Instrument :
 BNA_G
 ClientSampled :
 515-ZMSD

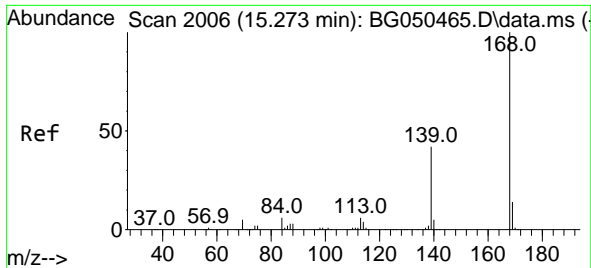
Tgt Ion	Resp	Lower	Upper
138	100		
108	11.3	8.3	12.5
92	128.2	96.4	144.6



#54
 2,4-Dinitrophenol
 Concen: 73.102 ng
 RT: 14.981 min Scan# 1956
 Delta R.T. 0.001 min
 Lab File: BG050636.D
 Acq: 19 Oct 2021 15:46

Tgt Ion	Resp	Lower	Upper
184	100		
63	83.5	68.3	102.5
154	65.3	62.6	93.8

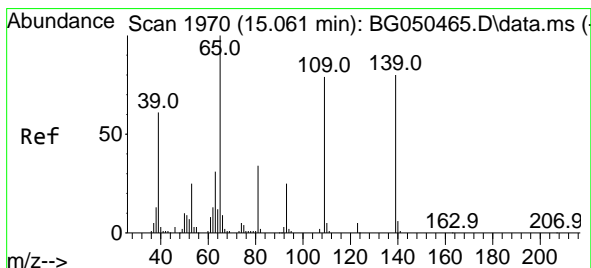
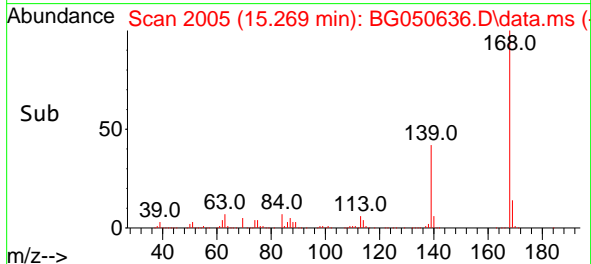
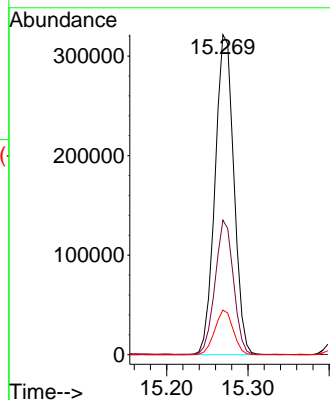
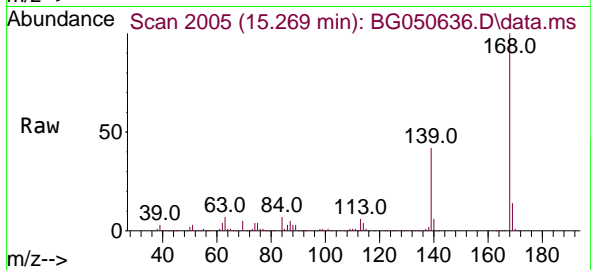




#55
 Dibenzofuran
 Concen: 49.846 ng
 RT: 15.269 min Scan# 2005
 Delta R.T. -0.005 min
 Lab File: BG050636.D
 Acq: 19 Oct 2021 15:46

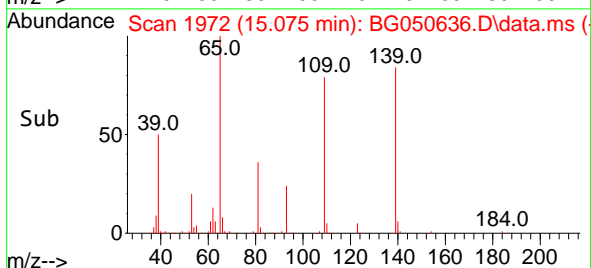
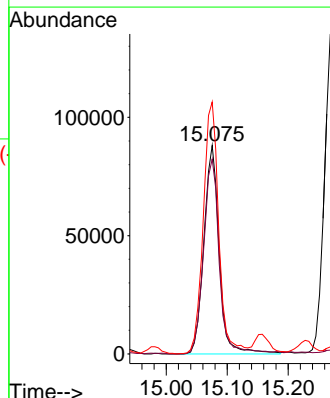
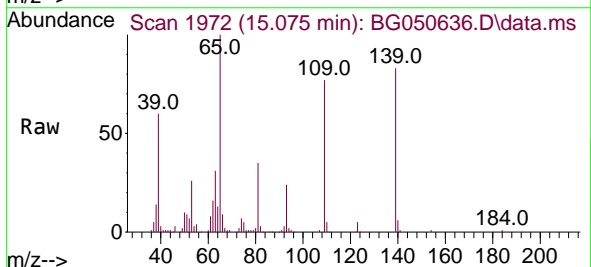
Instrument :
 BNA_G
 ClientSampleId :
 515-ZMSD

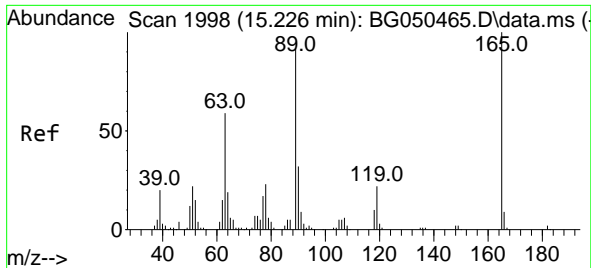
Tgt Ion:168 Resp: 517381
 Ion Ratio Lower Upper
 168 100
 139 42.1 33.4 50.2
 169 14.0 12.3 18.5



#56
 4-Nitrophenol
 Concen: 94.148 ng
 RT: 15.075 min Scan# 1972
 Delta R.T. 0.007 min
 Lab File: BG050636.D
 Acq: 19 Oct 2021 15:46

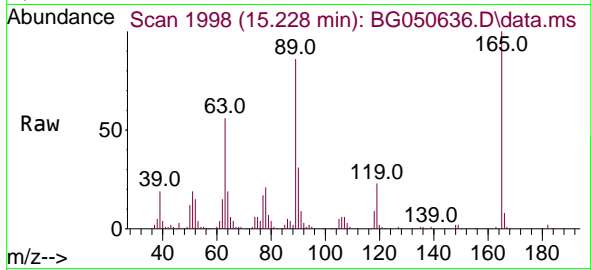
Tgt Ion:139 Resp: 154346
 Ion Ratio Lower Upper
 139 100
 109 93.5 116.3 156.3#
 65 120.9 105.0 145.0





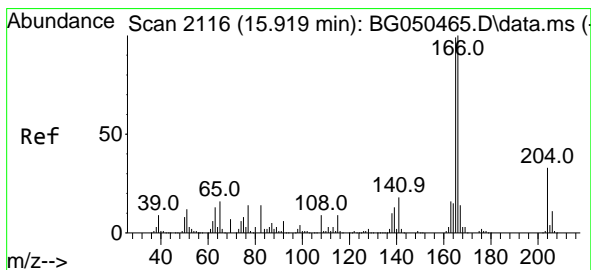
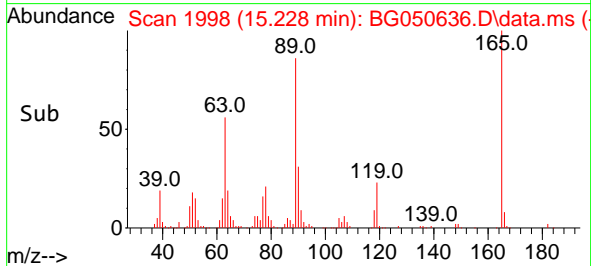
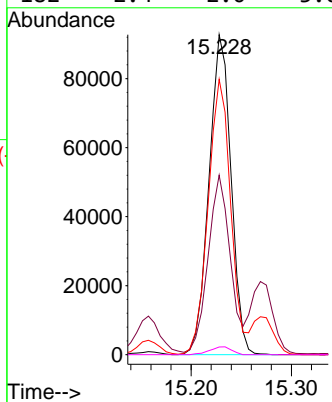
#57
 2,4-Dinitrotoluene
 Concen: 58.212 ng
 RT: 15.228 min Scan# 1998
 Delta R.T. 0.001 min
 Lab File: BG050636.D
 Acq: 19 Oct 2021 15:46

Instrument :
 BNA_G
 ClientSampled :
 515-ZMSD

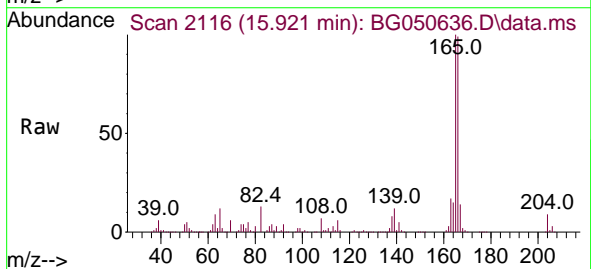


Tgt Ion:165 Resp: 141369

Ion	Ratio	Lower	Upper
165	100		
63	56.1	48.0	72.0
89	86.1	65.4	98.0
182	2.4	2.0	3.0

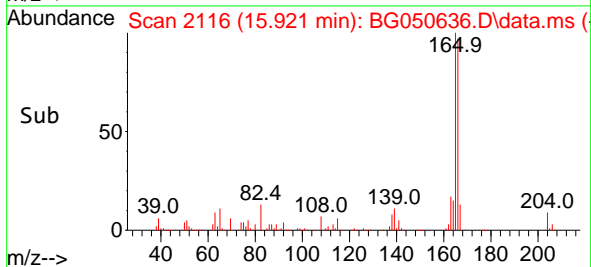
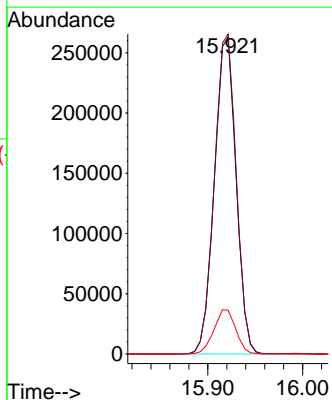


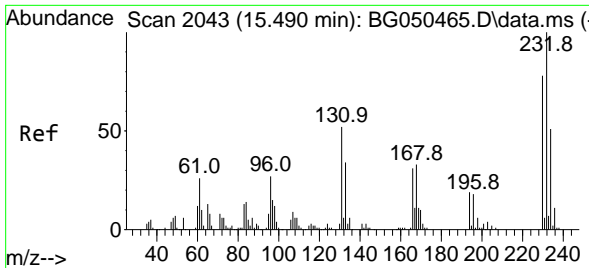
#58
 Fluorene
 Concen: 52.379 ng
 RT: 15.921 min Scan# 2116
 Delta R.T. 0.001 min
 Lab File: BG050636.D
 Acq: 19 Oct 2021 15:46



Tgt Ion:166 Resp: 417598

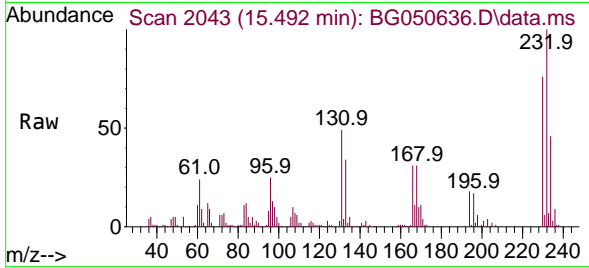
Ion	Ratio	Lower	Upper
166	100		
165	100.9	77.7	116.5
167	13.8	10.8	16.2



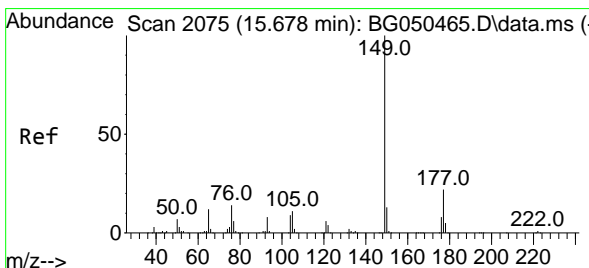
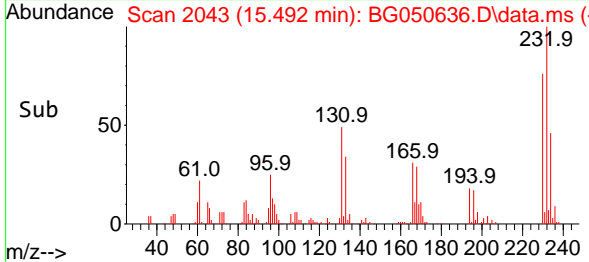
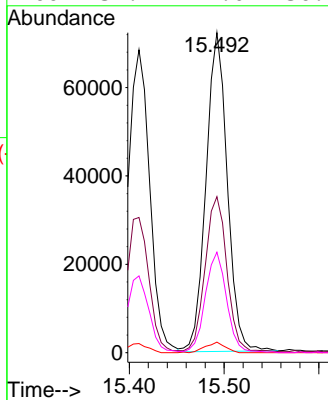


#59
 2,3,4,6-Tetrachlorophenol
 Concen: 52.090 ng
 RT: 15.492 min Scan# 2043
 Delta R.T. 0.001 min
 Lab File: BG050636.D
 Acq: 19 Oct 2021 15:46

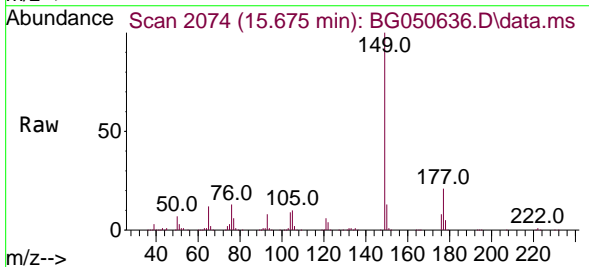
Instrument :
 BNA_G
 ClientSampled :
 515-ZMSD



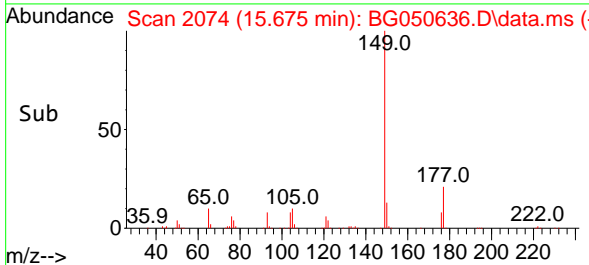
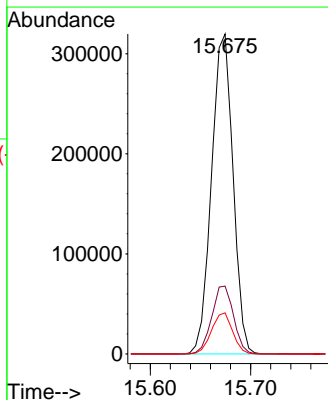
Tgt Ion:232 Resp: 112347
 Ion Ratio Lower Upper
 232 100
 131 50.0 37.2 55.8
 130 3.1 2.8 4.2
 166 31.7 24.0 36.0

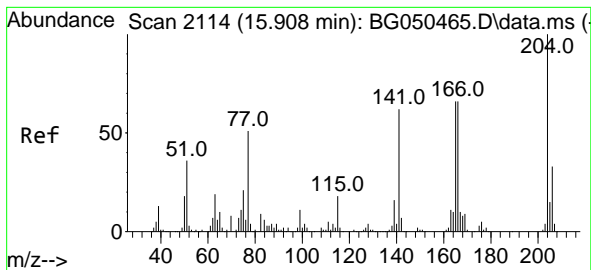


#60
 Diethylphthalate
 Concen: 52.604 ng
 RT: 15.675 min Scan# 2074
 Delta R.T. 0.001 min
 Lab File: BG050636.D
 Acq: 19 Oct 2021 15:46



Tgt Ion:149 Resp: 475442
 Ion Ratio Lower Upper
 149 100
 177 21.2 19.0 28.6
 150 12.8 10.2 15.4

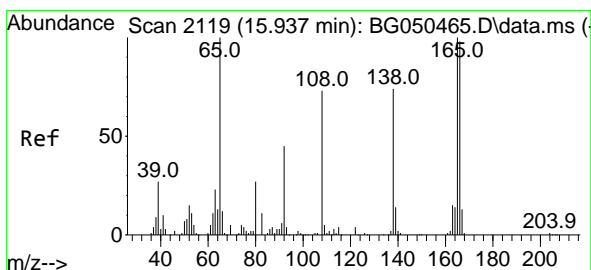
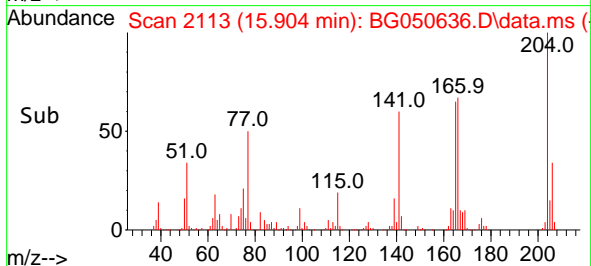
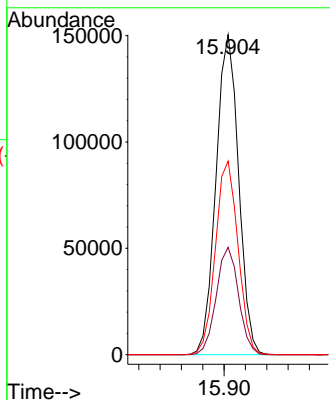
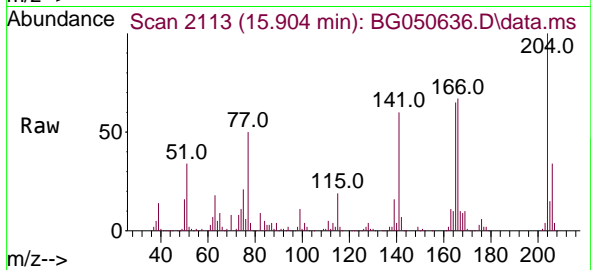




#61
 4-Chlorophenyl-phenylether
 Concen: 50.745 ng
 RT: 15.904 min Scan# 2113
 Delta R.T. -0.005 min
 Lab File: BG050636.D
 Acq: 19 Oct 2021 15:46

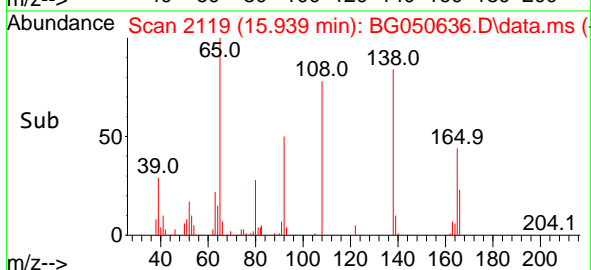
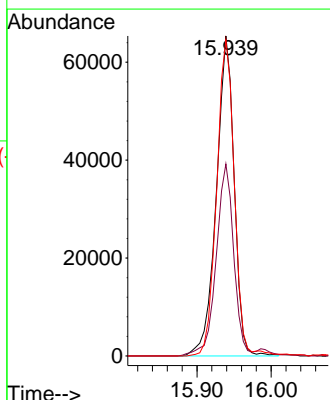
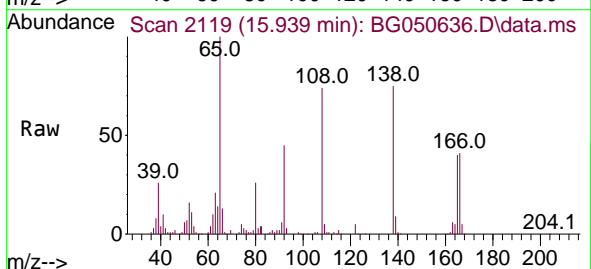
Instrument :
 BNA_G
 ClientSampled :
 515-ZMSD

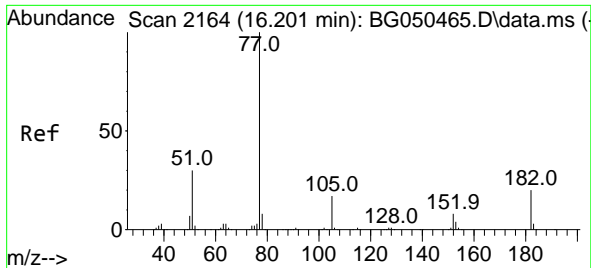
Tgt Ion	Resp	Lower	Upper
204	100		
206	33.5	24.6	37.0
141	60.5	47.8	71.8



#62
 4-Nitroaniline
 Concen: 51.532 ng
 RT: 15.939 min Scan# 2119
 Delta R.T. 0.001 min
 Lab File: BG050636.D
 Acq: 19 Oct 2021 15:46

Tgt Ion	Resp	Lower	Upper
138	100		
92	60.0	32.3	72.3
108	98.8	132.4	172.4#



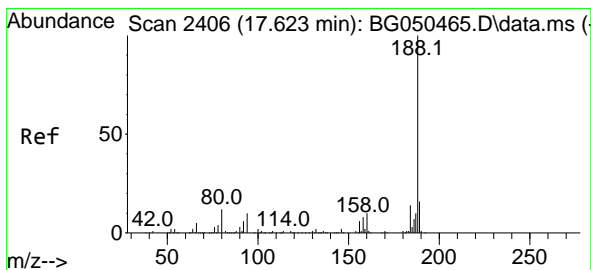
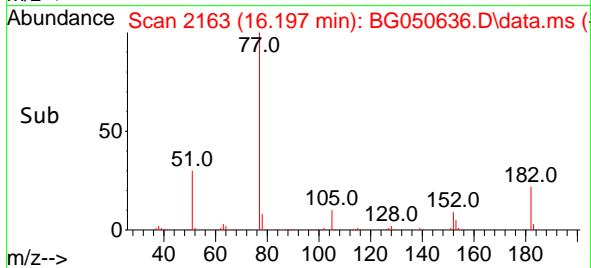
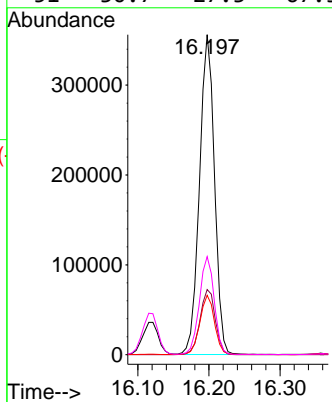
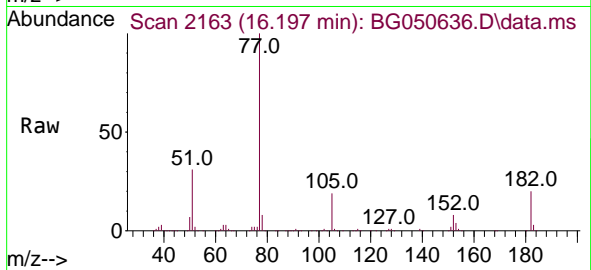


#63
 Azobenzene
 Concen: 50.093 ng
 RT: 16.197 min Scan# 2163
 Delta R.T. 0.001 min
 Lab File: BG050636.D
 Acq: 19 Oct 2021 15:46

Instrument :
 BNA_G
 ClientSampled :
 515-ZMSD

Tgt Ion: 77 Resp: 524090

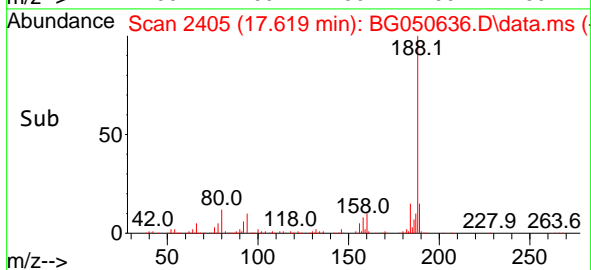
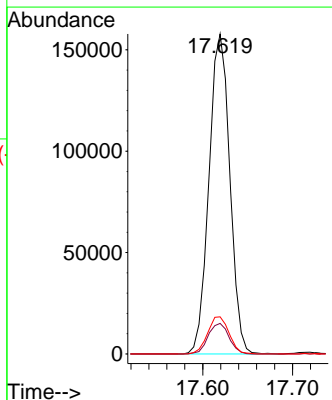
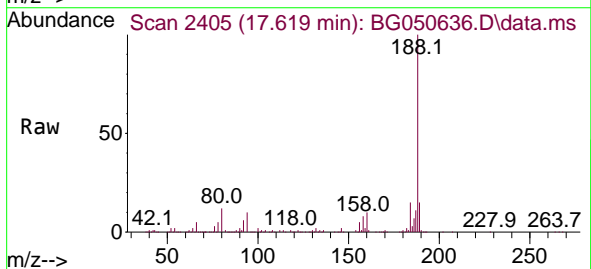
Ion	Ratio	Lower	Upper
77	100		
182	20.4	7.9	47.9
105	18.6	0.0	37.9
51	30.7	27.3	67.3

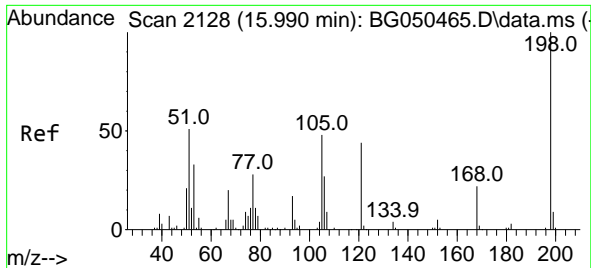


#64
 Phenanthrene-d10
 Concen: 20.000 ng
 RT: 17.619 min Scan# 2405
 Delta R.T. 0.001 min
 Lab File: BG050636.D
 Acq: 19 Oct 2021 15:46

Tgt Ion: 188 Resp: 254502

Ion	Ratio	Lower	Upper
188	100		
94	9.6	5.4	8.0#
80	11.6	3.7	5.5#

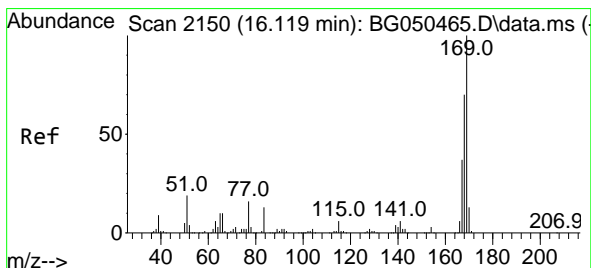
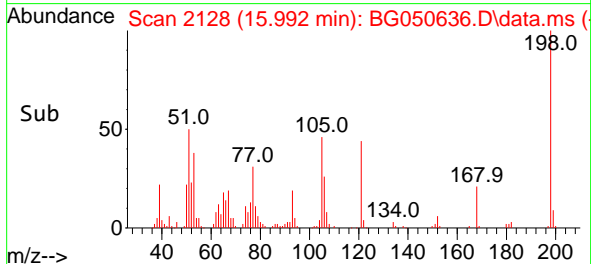
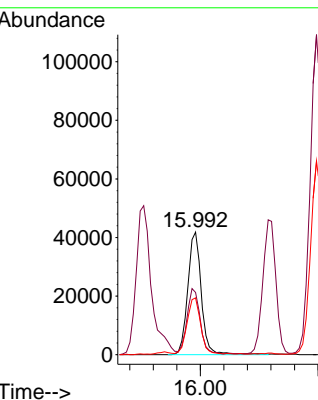
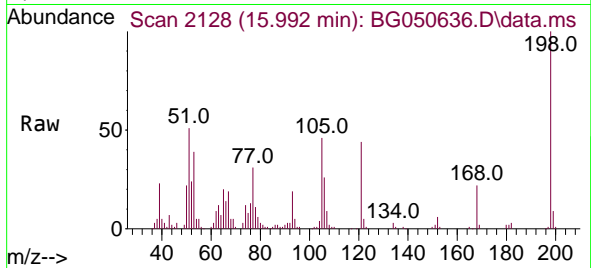




#65
 4,6-Dinitro-2-methylphenol
 Concen: 43.869 ng
 RT: 15.992 min Scan# 2128
 Delta R.T. 0.001 min
 Lab File: BG050636.D
 Acq: 19 Oct 2021 15:46

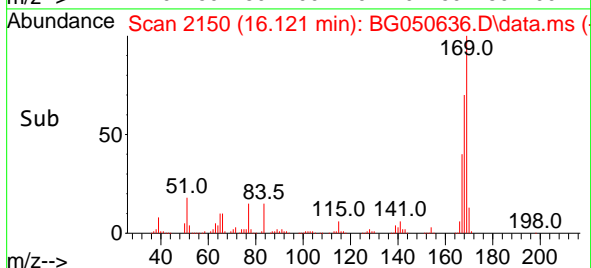
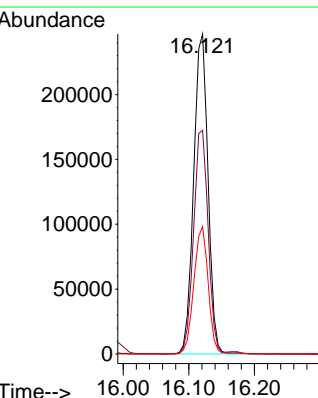
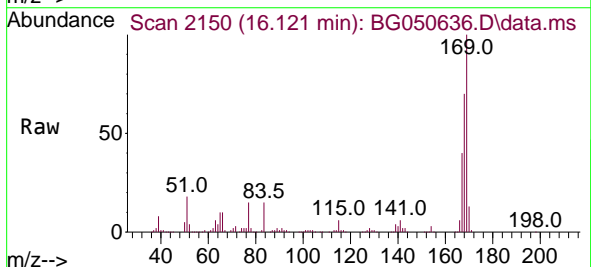
Instrument :
 BNA_G
 ClientSampled :
 515-ZMSD

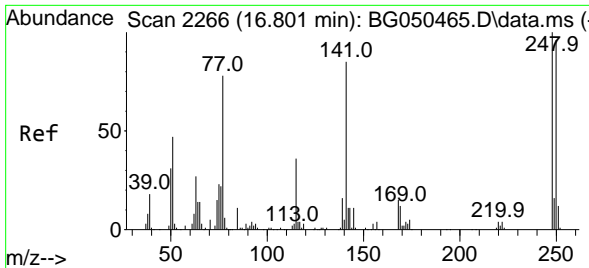
Tgt Ion	Resp	Lower	Upper
198	100		
51	50.8	29.4	69.4
105	46.3	15.1	55.1



#66
 n-Nitrosodiphenylamine
 Concen: 51.983 ng
 RT: 16.121 min Scan# 2150
 Delta R.T. 0.001 min
 Lab File: BG050636.D
 Acq: 19 Oct 2021 15:46

Tgt Ion	Resp	Lower	Upper
169	100		
168	69.9	56.3	84.5
167	39.8	28.4	42.6

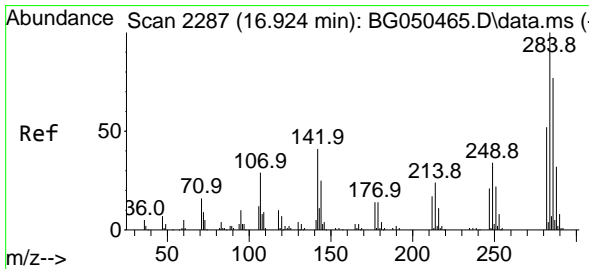
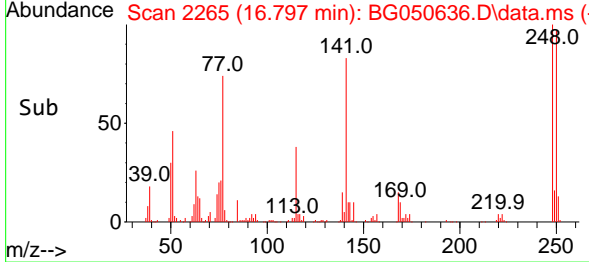
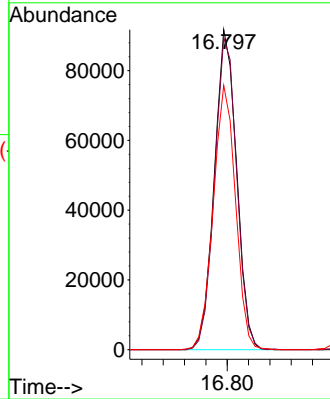
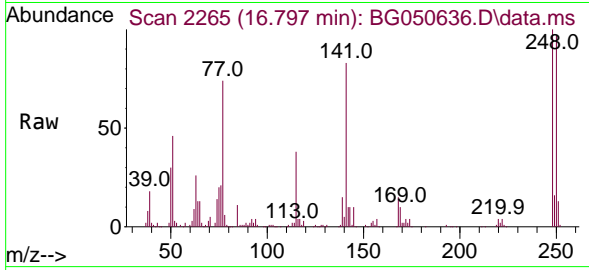




#67
 4-Bromophenyl-phenylether
 Concen: 51.667 ng
 RT: 16.797 min Scan# 2265
 Delta R.T. -0.005 min
 Lab File: BG050636.D
 Acq: 19 Oct 2021 15:46

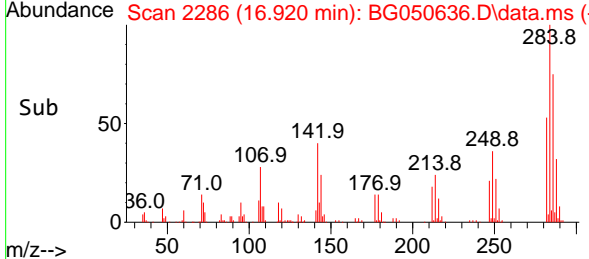
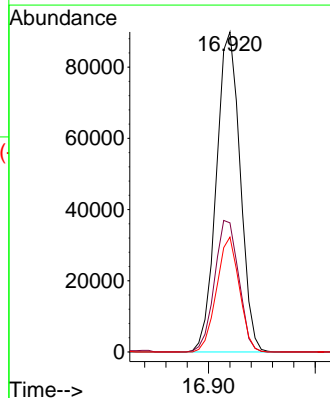
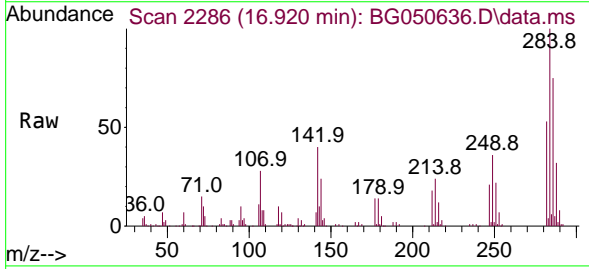
Instrument :
 BNA_G
 ClientSampled :
 515-ZMSD

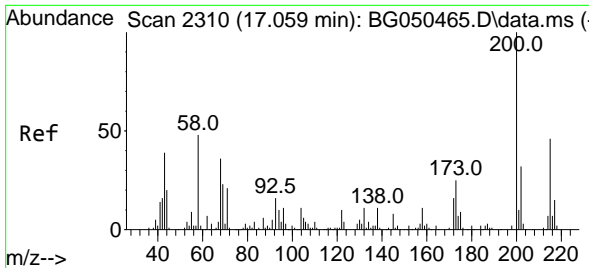
Tgt Ion	Resp	Lower	Upper
248	100		
250	97.5	76.1	114.1
141	82.6	65.4	98.2



#68
 Hexachlorobenzene
 Concen: 54.609 ng
 RT: 16.920 min Scan# 2286
 Delta R.T. 0.001 min
 Lab File: BG050636.D
 Acq: 19 Oct 2021 15:46

Tgt Ion	Resp	Lower	Upper
284	100		
142	40.3	27.0	40.6
249	35.9	28.2	42.2

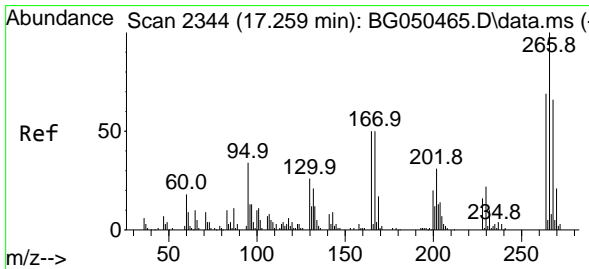
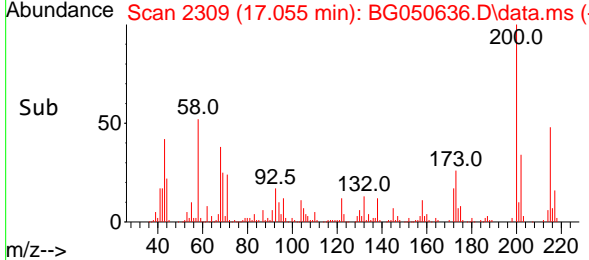
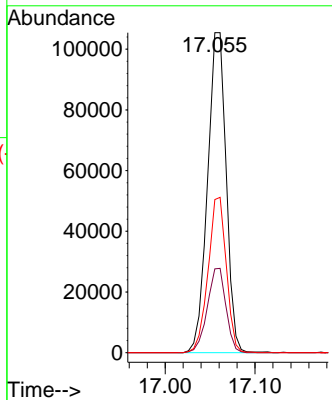
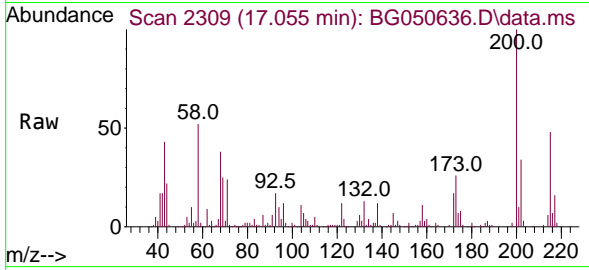




#69
 Atrazine
 Concen: 53.250 ng
 RT: 17.055 min Scan# 2309
 Delta R.T. -0.005 min
 Lab File: BG050636.D
 Acq: 19 Oct 2021 15:46

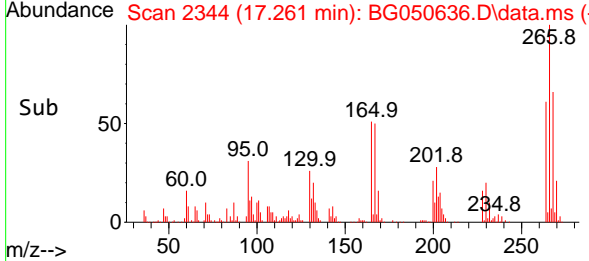
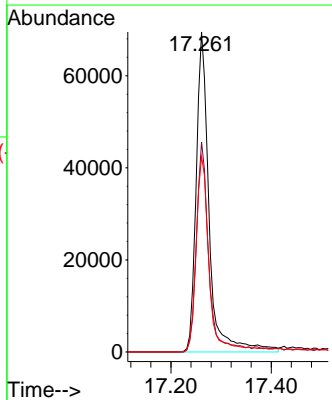
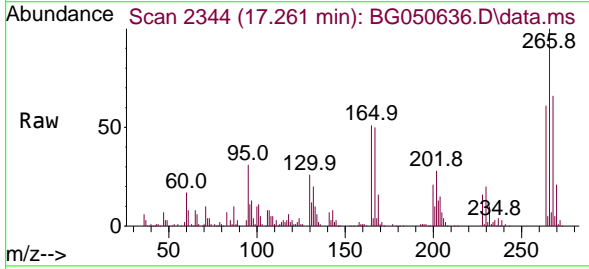
Instrument :
 BNA_G
ClientSampled :
 515-ZMSD

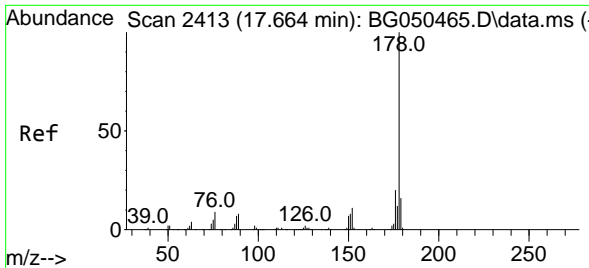
Tgt Ion	Resp	Lower	Upper
200	151690		
173	26.2	3.7	43.7
215	47.8	26.9	66.9



#70
 Pentachlorophenol
 Concen: 71.850 ng
 RT: 17.261 min Scan# 2344
 Delta R.T. -0.005 min
 Lab File: BG050636.D
 Acq: 19 Oct 2021 15:46

Tgt Ion	Resp	Lower	Upper
266	124671		
268	65.6	49.0	73.4
264	61.1	49.0	73.6



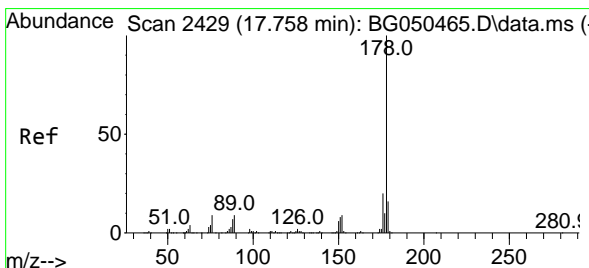
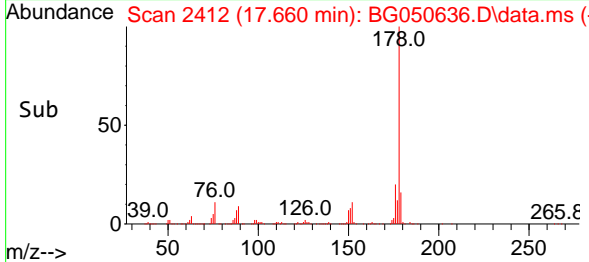
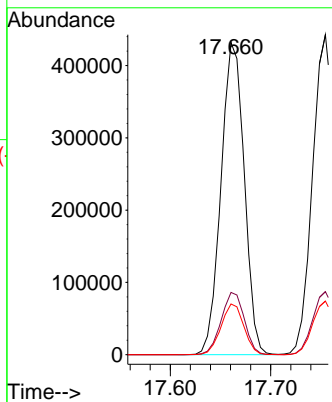
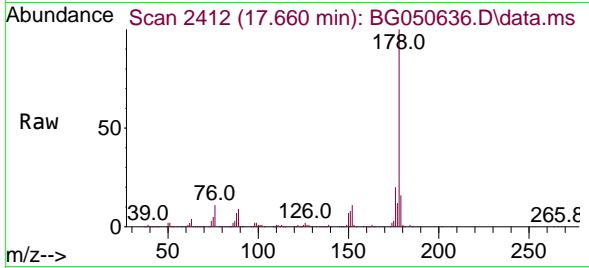


#71
 Phenanthrene
 Concen: 51.792 ng
 RT: 17.660 min Scan# 2412
 Delta R.T. -0.005 min
 Lab File: BG050636.D
 Acq: 19 Oct 2021 15:46

Instrument :
 BNA_G
 ClientSampled :
 515-ZMSD

Tgt Ion:178 Resp: 694590

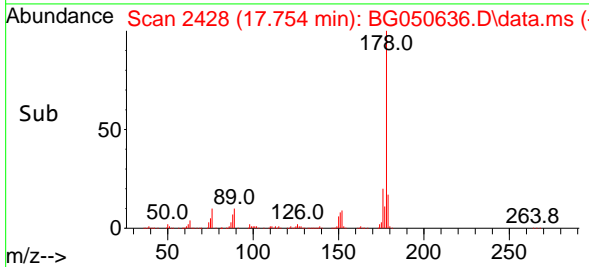
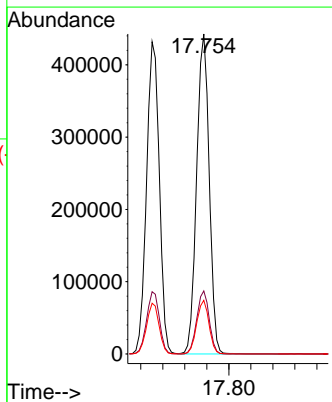
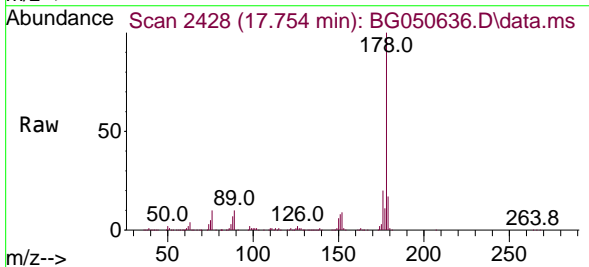
Ion	Ratio	Lower	Upper
178	100		
176	20.0	16.0	24.0
179	16.3	14.2	21.4

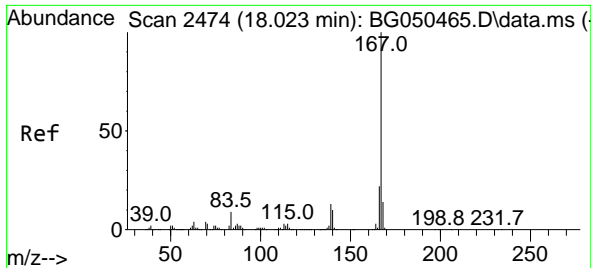


#72
 Anthracene
 Concen: 52.533 ng
 RT: 17.754 min Scan# 2428
 Delta R.T. 0.001 min
 Lab File: BG050636.D
 Acq: 19 Oct 2021 15:46

Tgt Ion:178 Resp: 700112

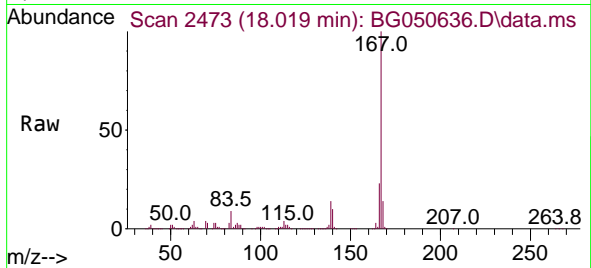
Ion	Ratio	Lower	Upper
178	100		
176	19.7	14.6	21.8
179	16.7	13.4	20.0



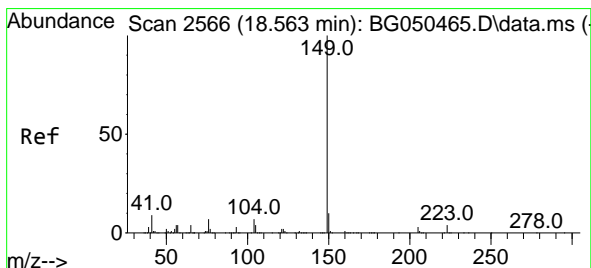
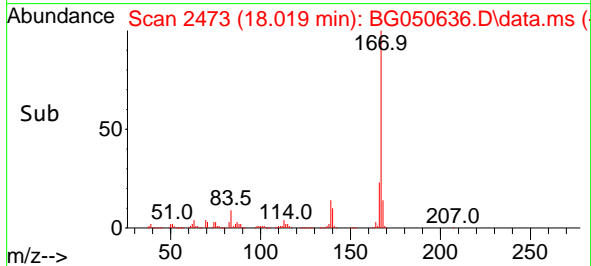
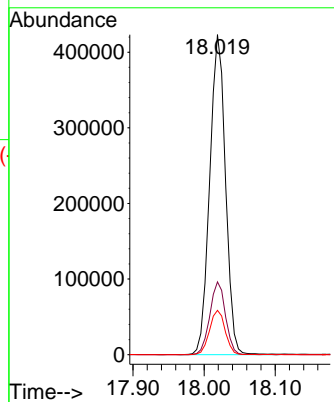


#73
 Carbazole
 Concen: 49.194 ng
 RT: 18.019 min Scan# 2473
 Delta R.T. -0.005 min
 Lab File: BG050636.D
 Acq: 19 Oct 2021 15:46

Instrument :
 BNA_G
 ClientSampled :
 515-ZMSD

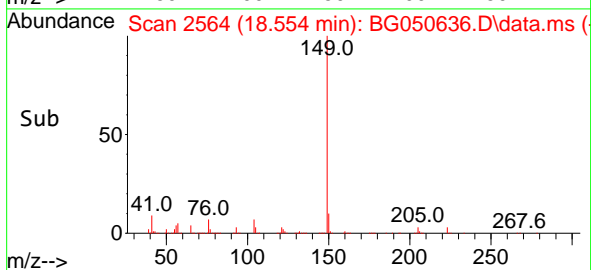
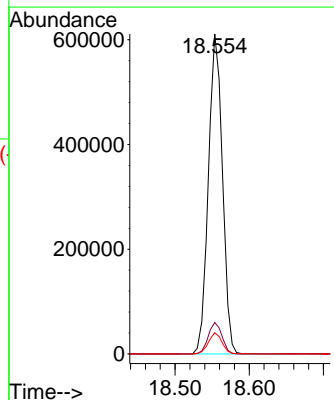
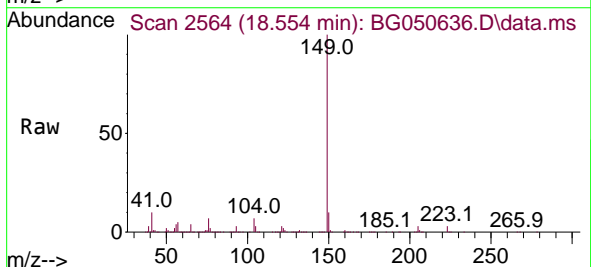


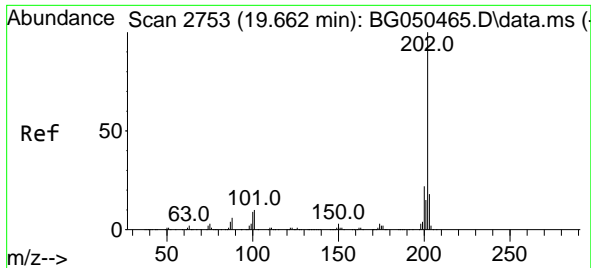
Tgt Ion:167 Resp: 653414
 Ion Ratio Lower Upper
 167 100
 166 22.7 17.4 26.2
 139 13.9 10.7 16.1



#74
 Di-n-butylphthalate
 Concen: 51.734 ng
 RT: 18.554 min Scan# 2564
 Delta R.T. -0.005 min
 Lab File: BG050636.D
 Acq: 19 Oct 2021 15:46

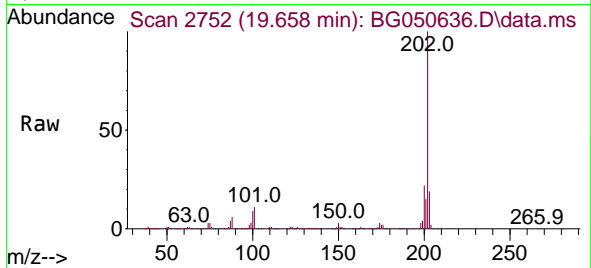
Tgt Ion:149 Resp: 806405
 Ion Ratio Lower Upper
 149 100
 150 9.9 7.5 11.3
 104 6.6 6.6 10.0#



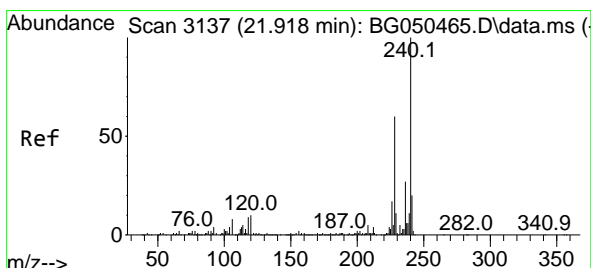
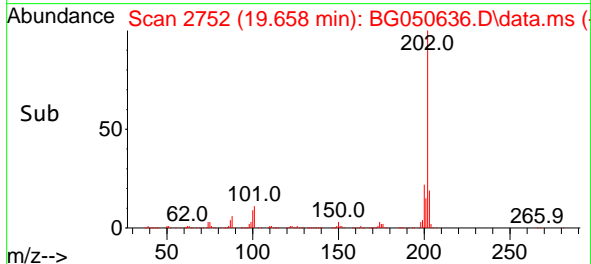
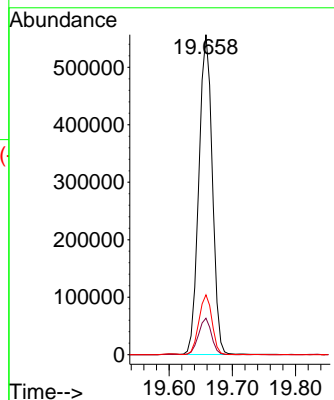


#75
 Fluoranthene
 Concen: 49.775 ng
 RT: 19.658 min Scan# 2752
 Delta R.T. -0.005 min
 Lab File: BG050636.D
 Acq: 19 Oct 2021 15:46

Instrument :
 BNA_G
 ClientSampled :
 515-ZMSD

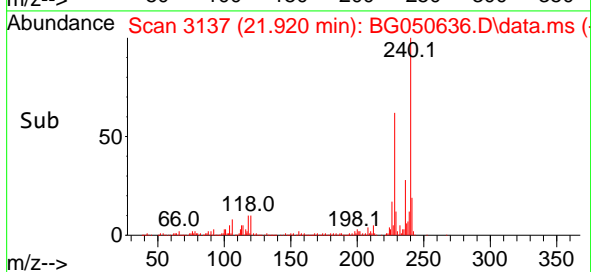
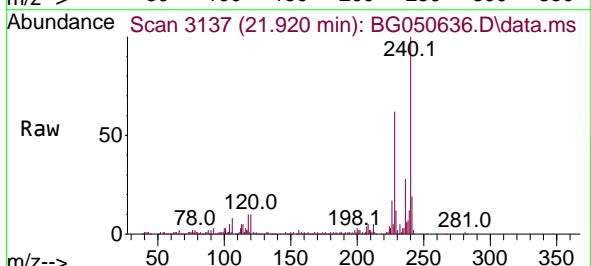
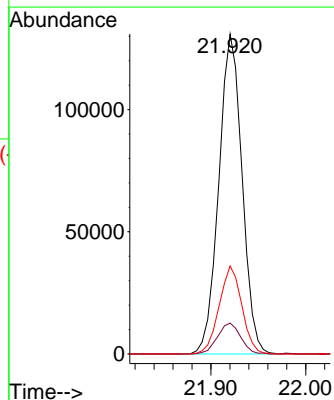


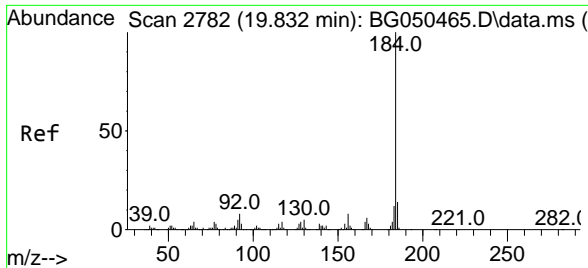
Tgt Ion:202 Resp: 820583
 Ion Ratio Lower Upper
 202 100
 101 11.4 0.0 24.7
 203 18.7 0.0 38.5



#76
 Chrysene-d12
 Concen: 20.000 ng
 RT: 21.920 min Scan# 3137
 Delta R.T. -0.005 min
 Lab File: BG050636.D
 Acq: 19 Oct 2021 15:46

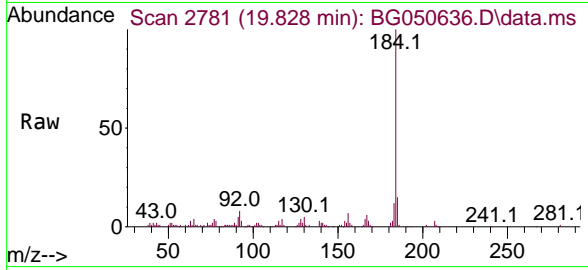
Tgt Ion:240 Resp: 223151
 Ion Ratio Lower Upper
 240 100
 120 9.7 4.2 6.2#
 236 27.5 21.8 32.6





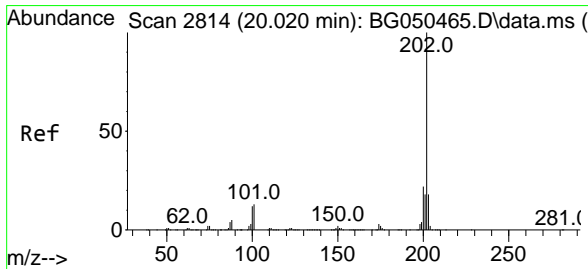
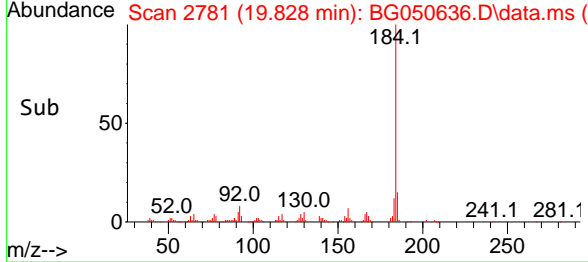
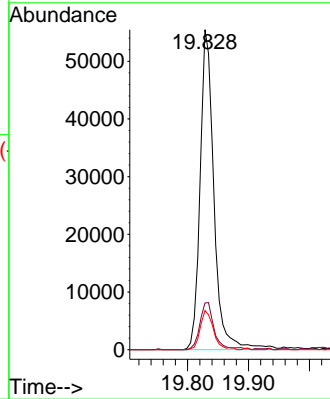
#77
 Benzidine
 Concen: 12.101 ng
 RT: 19.828 min Scan# 2781
 Delta R.T. -0.005 min
 Lab File: BG050636.D
 Acq: 19 Oct 2021 15:46

Instrument :
 BNA_G
 ClientSampled :
 515-ZMSD

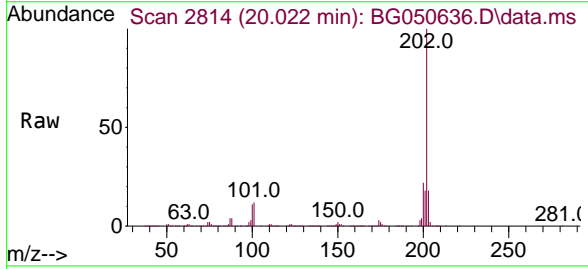


Tgt Ion:184 Resp: 87519

Ion	Ratio	Lower	Upper
184	100		
185	14.6	10.7	16.1
183	12.2	9.4	14.0

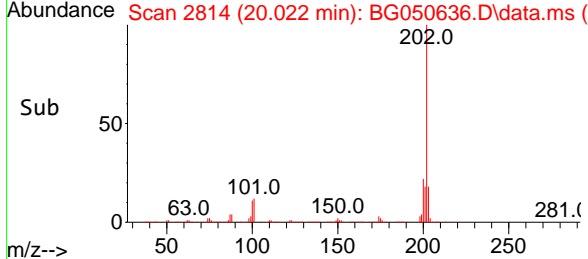
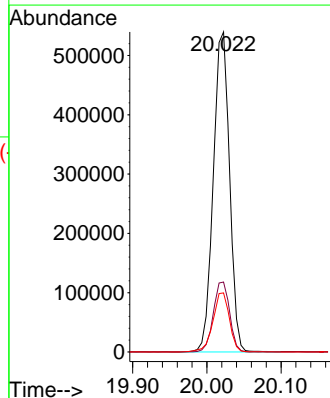


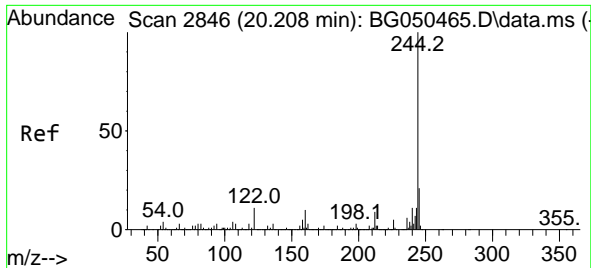
#78
 Pyrene
 Concen: 51.803 ng
 RT: 20.022 min Scan# 2814
 Delta R.T. 0.001 min
 Lab File: BG050636.D
 Acq: 19 Oct 2021 15:46



Tgt Ion:202 Resp: 820168

Ion	Ratio	Lower	Upper
202	100		
200	21.9	15.8	23.8
203	18.5	14.6	21.8



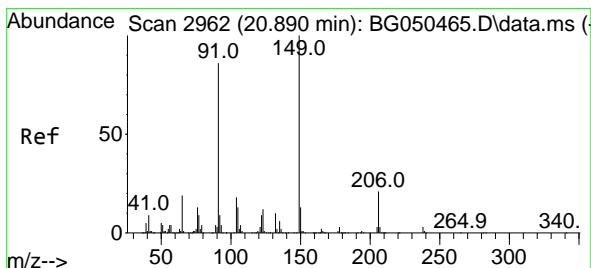
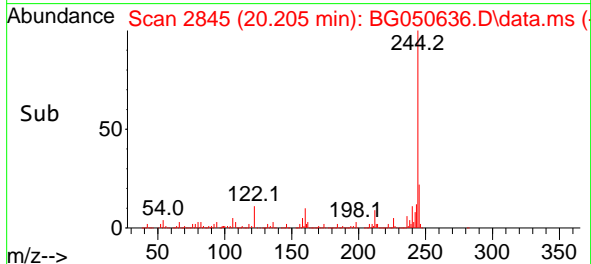
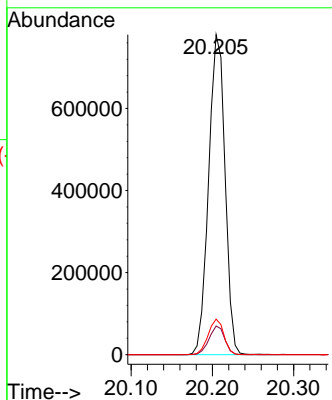
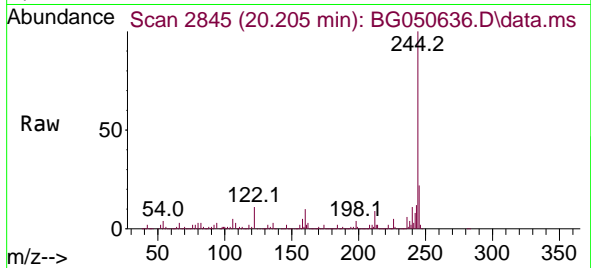


#79
 Terphenyl-d14
 Concen: 95.347 ng
 RT: 20.205 min Scan# 2845
 Delta R.T. -0.005 min
 Lab File: BG050636.D
 Acq: 19 Oct 2021 15:46

Instrument :
 BNA_G
ClientSampled :
 515-ZMSD

Tgt Ion:244 Resp: 1091779

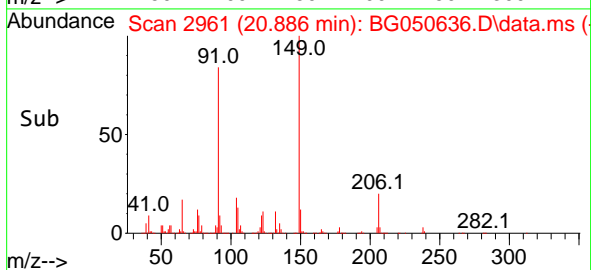
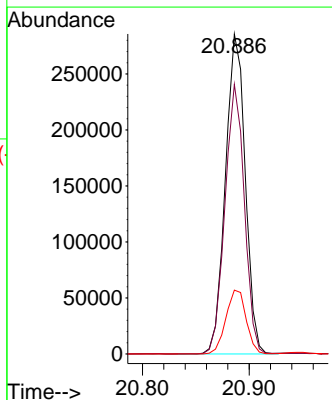
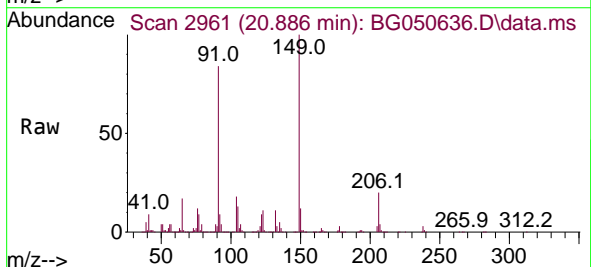
Ion	Ratio	Lower	Upper
244	100		
212	8.9	6.9	10.3
122	11.1	5.0	7.6#

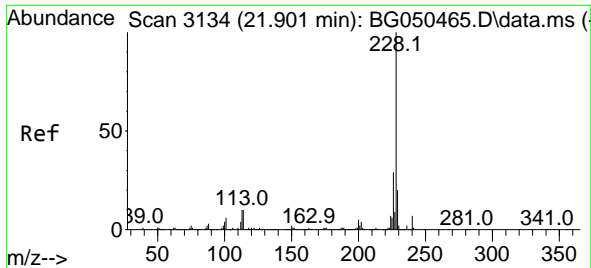


#80
 Butylbenzylphthalate
 Concen: 55.171 ng
 RT: 20.886 min Scan# 2961
 Delta R.T. -0.005 min
 Lab File: BG050636.D
 Acq: 19 Oct 2021 15:46

Tgt Ion:149 Resp: 369473

Ion	Ratio	Lower	Upper
149	100		
91	84.3	63.4	95.2
206	19.9	18.4	27.6



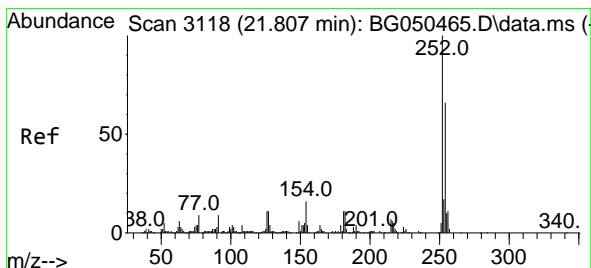
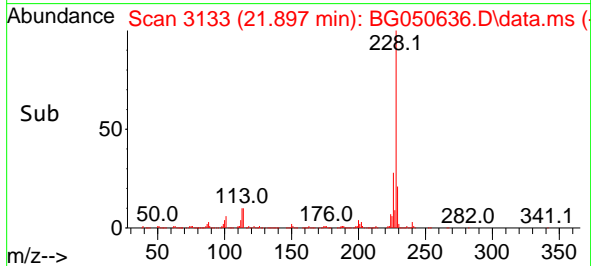
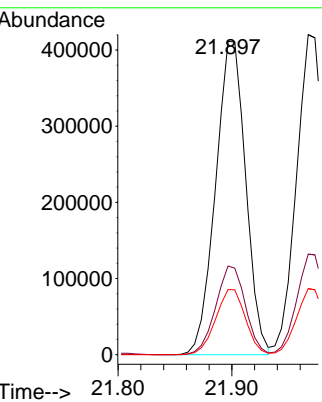
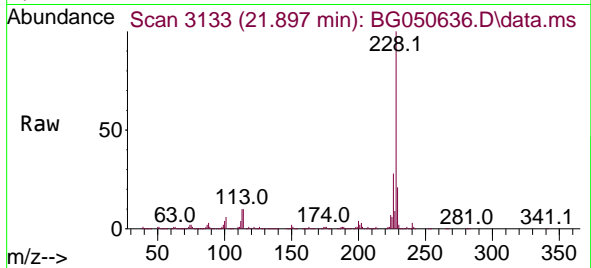


#81
 Benzo(a)anthracene
 Concen: 51.294 ng
 RT: 21.897 min Scan# 3133
 Delta R.T. -0.005 min
 Lab File: BG050636.D
 Acq: 19 Oct 2021 15:46

Instrument :
 BNA_G
 ClientSampled :
 515-ZMSD

Tgt Ion:228 Resp: 757389

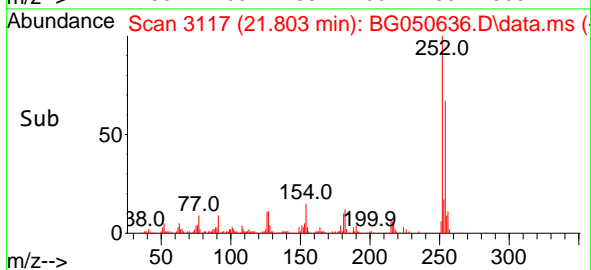
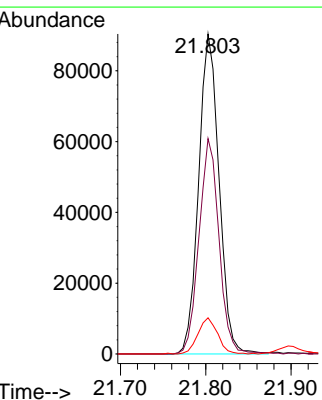
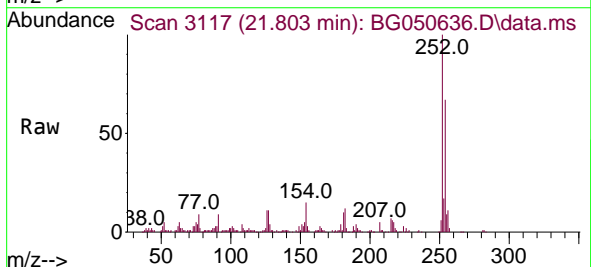
Ion	Ratio	Lower	Upper
228	100		
226	28.3	22.7	34.1
229	20.8	16.0	24.0

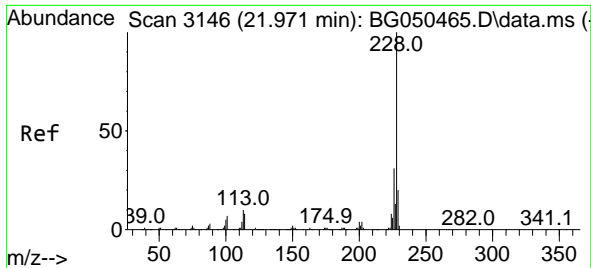


#82
 3,3'-Dichlorobenzidine
 Concen: 30.719 ng
 RT: 21.803 min Scan# 3117
 Delta R.T. -0.005 min
 Lab File: BG050636.D
 Acq: 19 Oct 2021 15:46

Tgt Ion:252 Resp: 150325

Ion	Ratio	Lower	Upper
252	100		
254	67.3	52.4	78.6
126	11.3	5.9	8.9#

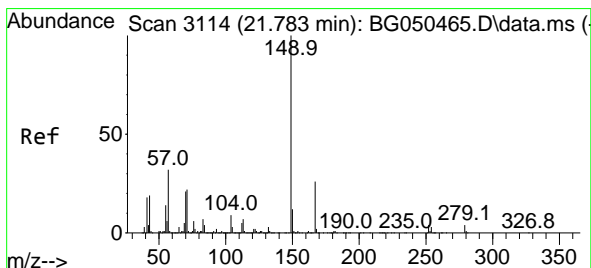
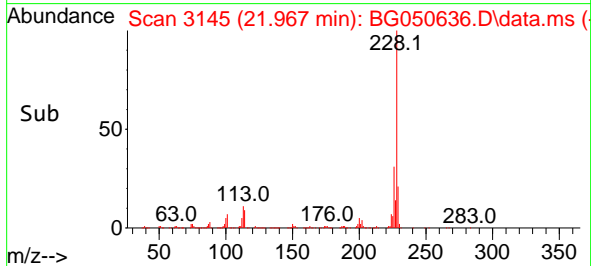
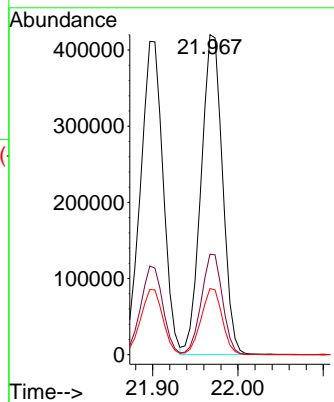
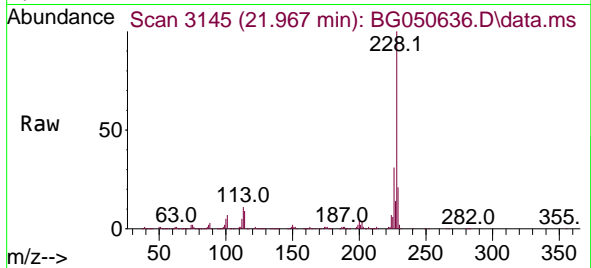




#83
 Chrysene
 Concen: 52.759 ng
 RT: 21.967 min Scan# 3145
 Delta R.T. -0.005 min
 Lab File: BG050636.D
 Acq: 19 Oct 2021 15:46

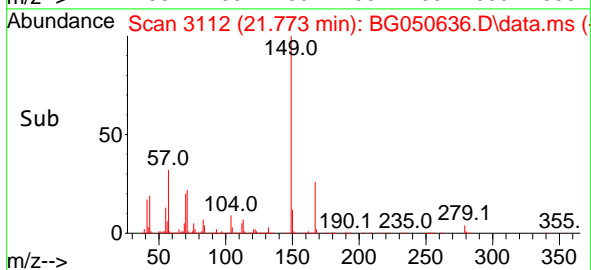
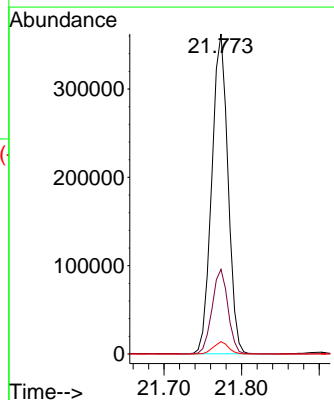
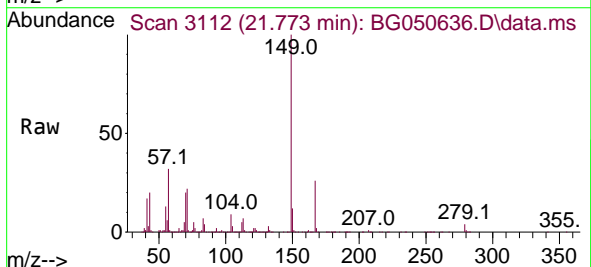
Instrument :
 BNA_G
 ClientSampleId :
 515-ZMSD

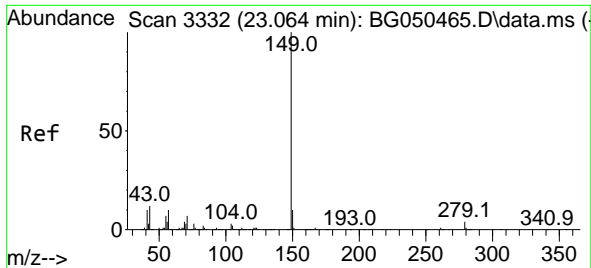
Tgt Ion:228 Resp: 732781
 Ion Ratio Lower Upper
 228 100
 226 31.4 23.1 34.7
 229 20.7 15.3 22.9



#84
 Bis(2-ethylhexyl)phthalate
 Concen: 55.110 ng
 RT: 21.773 min Scan# 3112
 Delta R.T. -0.005 min
 Lab File: BG050636.D
 Acq: 19 Oct 2021 15:46

Tgt Ion:149 Resp: 524390
 Ion Ratio Lower Upper
 149 100
 167 26.5 22.3 33.5
 279 3.9 3.8 5.8

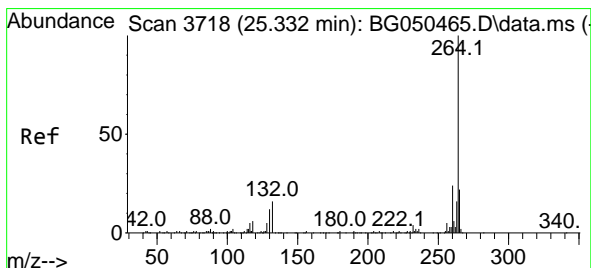
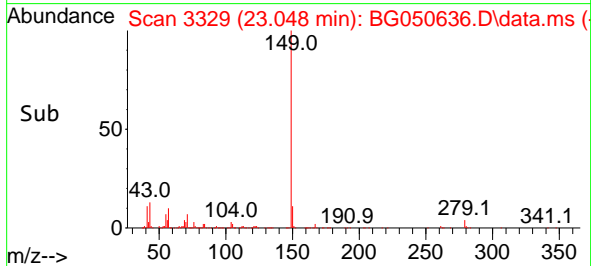
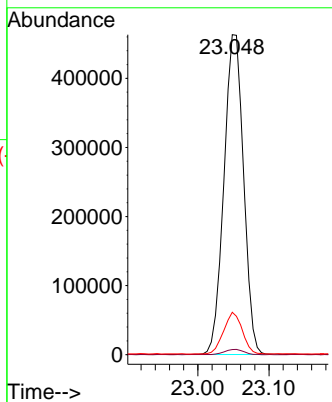
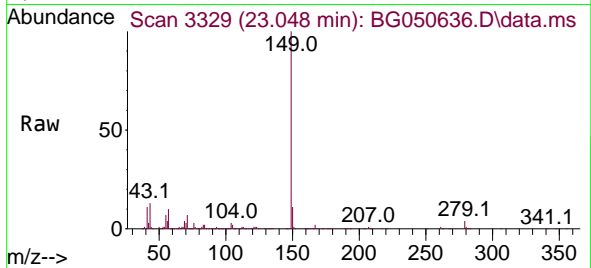




#85
 Di-n-octyl phthalate
 Concen: 55.927 ng
 RT: 23.048 min Scan# 3329
 Delta R.T. -0.005 min
 Lab File: BG050636.D
 Acq: 19 Oct 2021 15:46

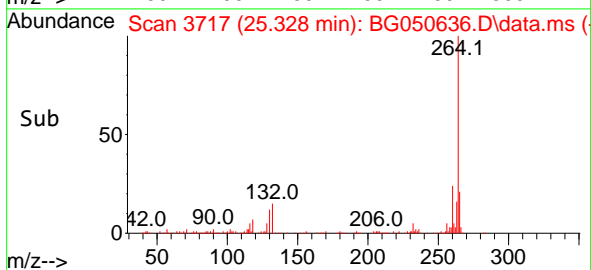
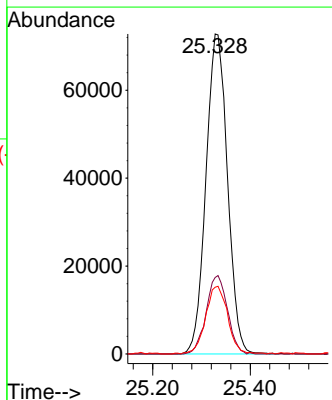
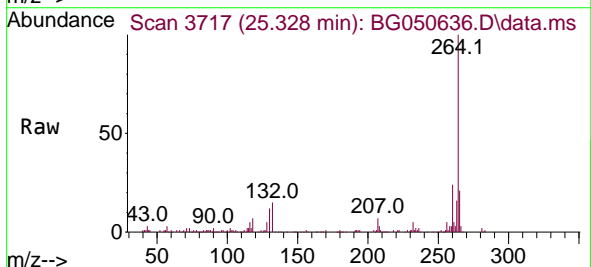
Instrument :
 BNA_G
ClientSampled :
 515-ZMSD

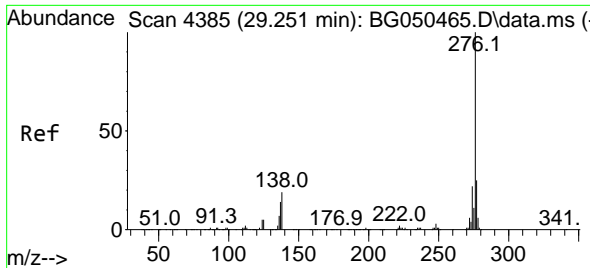
Tgt Ion	Resp	Lower	Upper
149	100		
167	1.7	1.4	2.2
43	12.4	8.6	12.8



#86
 Perylene-d12
 Concen: 20.000 ng
 RT: 25.328 min Scan# 3717
 Delta R.T. -0.005 min
 Lab File: BG050636.D
 Acq: 19 Oct 2021 15:46

Tgt Ion	Resp	Lower	Upper
264	100		
260	23.9	19.4	29.2
265	20.9	16.9	25.3

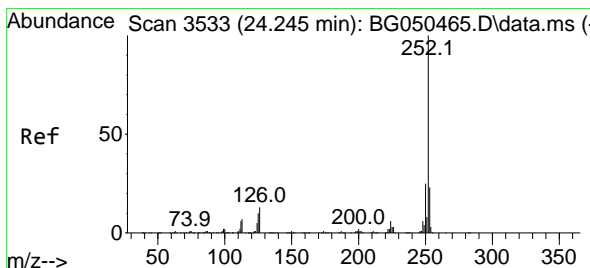
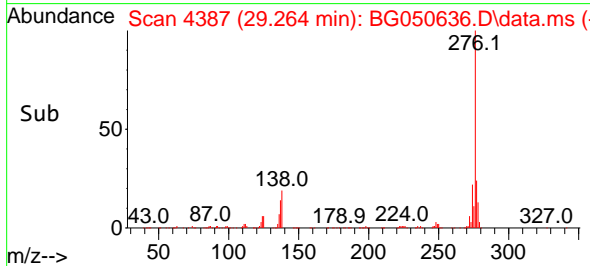
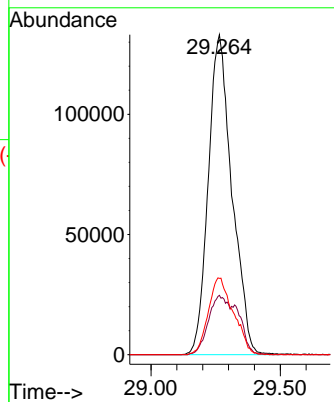
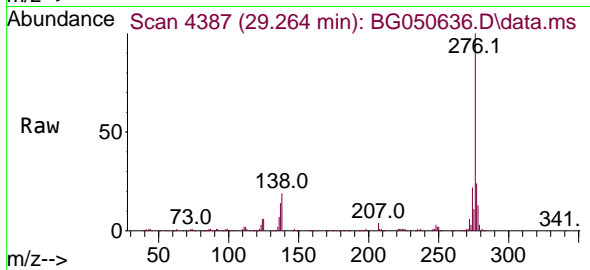




#87
 Indeno(1,2,3-cd)pyrene
 Concen: 54.565 ng
 RT: 29.264 min Scan# 4387
 Delta R.T. 0.001 min
 Lab File: BG050636.D
 Acq: 19 Oct 2021 15:46

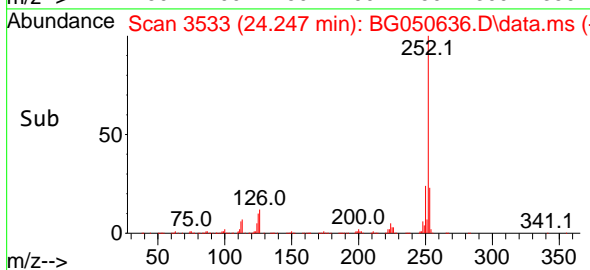
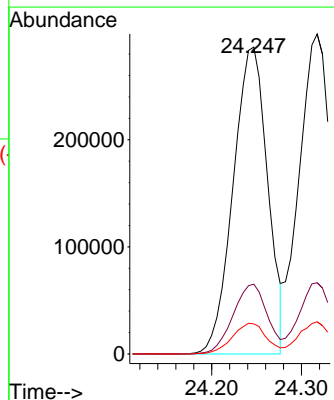
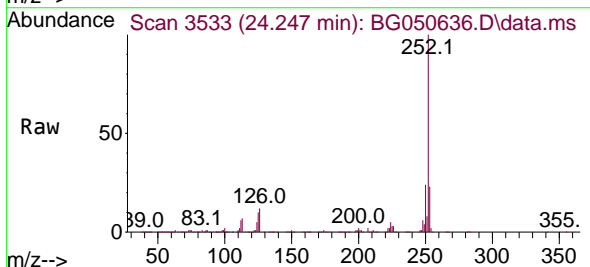
Instrument :
 BNA_G
 ClientSampled :
 515-ZMSD

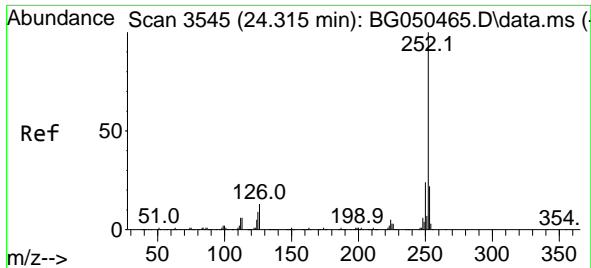
Tgt Ion:276 Resp: 847914
 Ion Ratio Lower Upper
 276 100
 138 15.5 5.1 7.7#
 277 25.5 19.8 29.6



#88
 Benzo(b)fluoranthene
 Concen: 55.850 ng
 RT: 24.247 min Scan# 3533
 Delta R.T. 0.001 min
 Lab File: BG050636.D
 Acq: 19 Oct 2021 15:46

Tgt Ion:252 Resp: 763113
 Ion Ratio Lower Upper
 252 100
 253 22.8 16.2 24.4
 125 9.8 3.0 4.4#

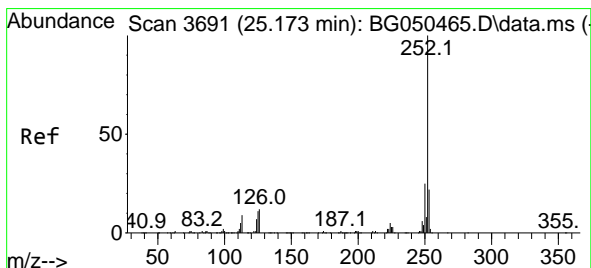
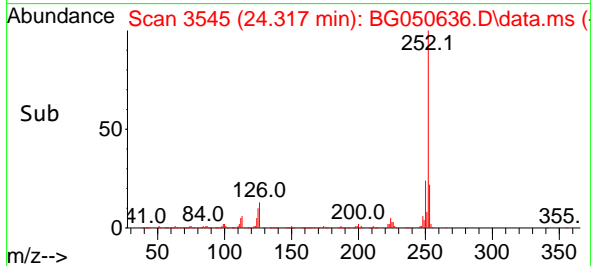
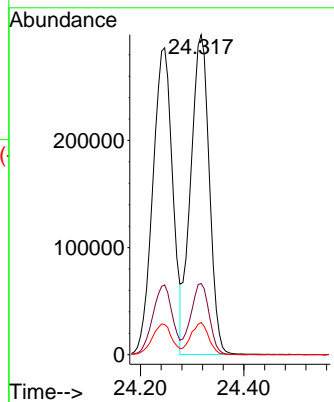
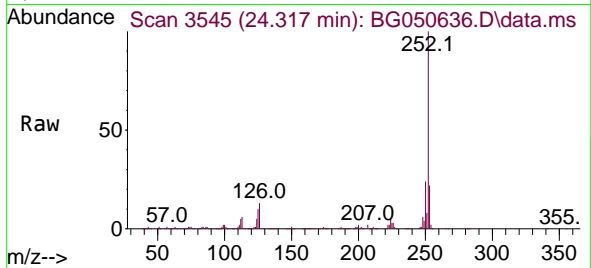




#89
 Benzo(k)fluoranthene
 Concen: 55.473 ng
 RT: 24.317 min Scan# 3545
 Delta R.T. 0.001 min
 Lab File: BG050636.D
 Acq: 19 Oct 2021 15:46

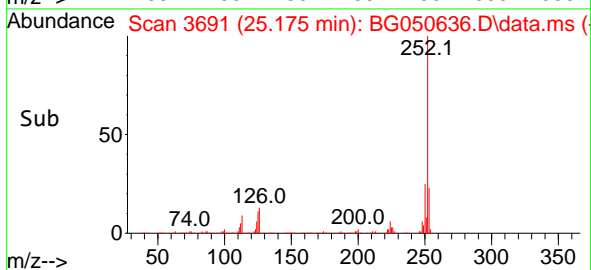
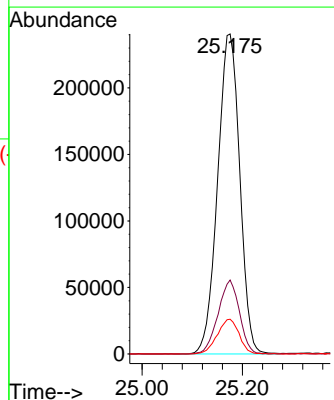
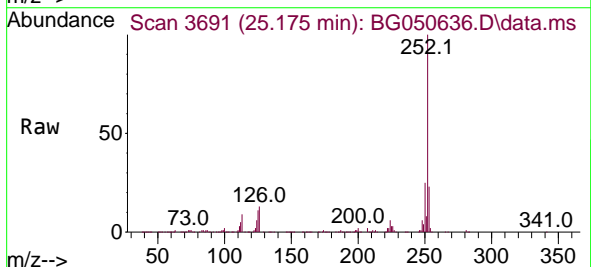
Instrument :
 BNA_G
 ClientSampled :
 515-ZMSD

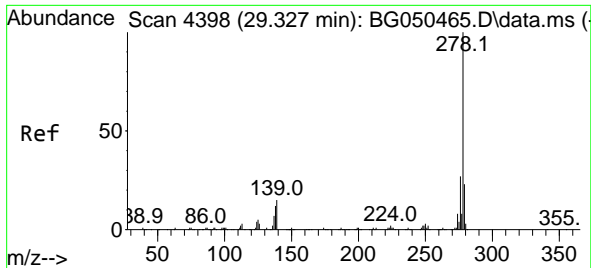
Tgt Ion:252 Resp: 745667
 Ion Ratio Lower Upper
 252 100
 253 22.3 18.0 27.0
 125 10.1 3.1 4.7#



#90
 Benzo(a)pyrene
 Concen: 63.379 ng
 RT: 25.175 min Scan# 3691
 Delta R.T. 0.001 min
 Lab File: BG050636.D
 Acq: 19 Oct 2021 15:46

Tgt Ion:252 Resp: 736294
 Ion Ratio Lower Upper
 252 100
 253 23.1 16.6 25.0
 125 10.8 3.5 5.3#



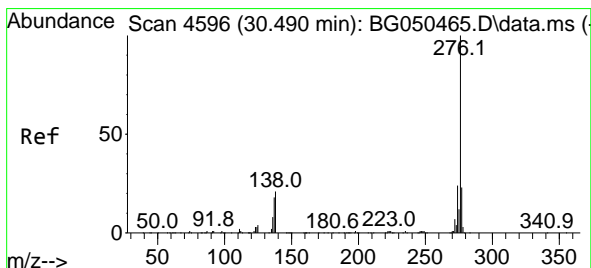
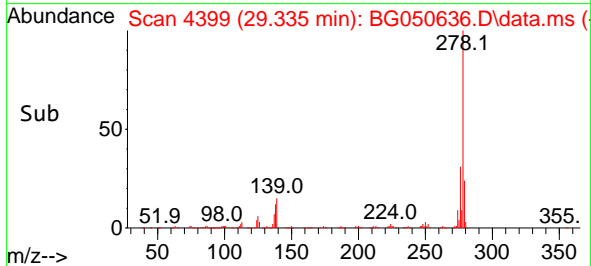
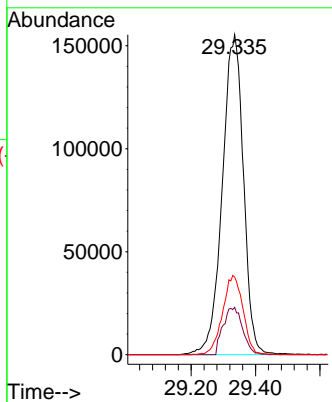
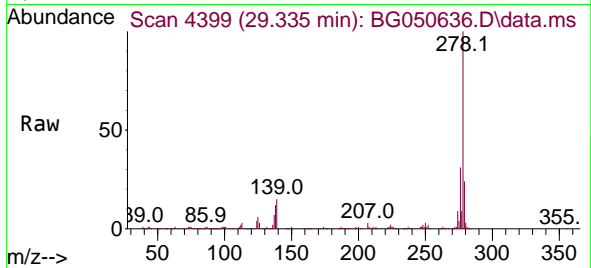


#91
 Dibenzo(a,h)anthracene
 Concen: 55.098 ng
 RT: 29.335 min Scan# 4399
 Delta R.T. 0.001 min
 Lab File: BG050636.D
 Acq: 19 Oct 2021 15:46

Instrument :
 BNA_G
 ClientSampled :
 515-ZMSD

Tgt Ion:278 Resp: 708182

Ion	Ratio	Lower	Upper
278	100		
139	14.8	4.6	6.8#
279	24.2	17.9	26.9



#92
 Benzo(g,h,i)perylene
 Concen: 56.108 ng
 RT: 30.498 min Scan# 4597
 Delta R.T. 0.001 min
 Lab File: BG050636.D
 Acq: 19 Oct 2021 15:46

Tgt Ion:276 Resp: 706308

Ion	Ratio	Lower	Upper
276	100		
277	23.3	18.4	27.6
138	18.6	7.0	10.6#

