

Data Path : Z:\HPCHEM1\BNA G\DATA\BG102015\
 Data File : BG019259.D
 Acq On : 20 Oct 2015 16:13
 Operator : UM/NP
 Sample : SSTDCCC020
 Misc :
 ALS Vial : 2 Sample Multiplier: 1

Instrument :
 BNA_G
 ClientSampled :

Quant Time: Oct 21 01:18:41 2015
 Quant Method : Z:\HPCHEM1\BNA G\METHODS\SOM02.2-EPA-BG101515.M
 Quant Title : SVOA CALIBRATION
 QLast Update : Tue Oct 20 06:03:40 2015
 Response via : Initial Calibration

Internal Standards	R.T.	QIon	Response	Conc	Units	Dev(Min)
1) 1,4-Dichlorobenzene-d4	7.99	152	12388	20.00	ng/ul	-0.01
18) Naphthalene-d8	10.80	136	59413	20.00	ng/ul	-0.01
36) Acenaphthene-d10	14.62	164	48037	20.00	ng/ul	0.00
62) Phenanthrene-d10	17.47	188	126488	20.00	ng/ul	0.09
78) Chrysene-d12	21.64	240	163412	20.00	ng/ul	0.00
86) Perylene-d12	24.83	264	162049	20.00	ng/ul	-0.03

System Monitoring Compounds

3) 1,4-Dioxane-d8	3.42	96	1710	7.69	ng/uL	-0.02
5) Phenol-d5	7.17	99	19858	18.37	ng/ul	-0.01
7) Bis-(2-Chloroethyl)ether-d	7.31	67	13242	19.03	ng/ul	-0.01
9) 2-Chlorophenol-d4	7.53	132	15432	19.59	ng/ul	-0.01
13) 4-Methylphenol-d8	8.71	113	17263	18.85	ng/ul	-0.01
19) Nitrobenzene-d5	9.15	128	8821	19.27	ng/ul	-0.01
22) 2-Nitrophenol-d4	9.88	143	10948	22.53	ng/ul	0.00
26) 2,4-Dichlorophenol-d3	10.42	165	19752	20.53	ng/ul	-0.01
29) 4-Chloroaniline-d4	10.93	131	26855	21.67	ng/ul	0.00
44) Dimethylphthalate-d6	14.03	166	83796	19.95	ng/ul	0.00
47) Acenaphthylene-d8	14.32	160	88818	19.56	ng/ul	0.00
52) 4-Nitrophenol-d4	14.85	143	16196	21.44	ng/ul	0.00
58) Fluorene-d10	15.62	176	71151	19.81	ng/ul	0.00
63) 4,6-Dinitro-2-methylphenol	15.74	200	18280	23.43	ng/ul	0.00
71) Anthracene-d10	17.51	188	198	0.03	ng/ul	0.03
79) Pyrene-d10	19.75	212	157087	21.19	ng/ul	-0.01
90) Benzo(a)pyrene-d12	24.61	264	161060	19.67	ng/ul	-0.03

Target Compounds

Target Compounds	R.T.	QIon	Response	Conc	Units	Ovalue
4) Benzaldehyde	7.13	77	13857	22.05	ng/ul	93
6) Phenol	7.20	94	20942	18.60	ng/ul#	77
8) Bis(2-Chloroethyl)ether	7.41	93	15498	19.41	ng/ul	98
10) 2-Chlorophenol	7.56	128	16246	20.08	ng/ul	96
11) 2-Methylphenol	8.44	108	16721	18.92	ng/ul	92
12) 2,2'-oxybis(1-Chloropropan	8.52	45	29712	16.69	ng/ul#	96
14) Acetophenone	8.81	105	30024	19.42	ng/ul	97
15) N-Nitroso-di-n-propylamine	8.80	70	16683	21.12	ng/ul	97
16) 4-Methylphenol	8.78	108	19006	19.17	ng/ul	98
17) Hexachloroethane	9.07	117	7127	20.46	ng/ul	96
20) Nitrobenzene	9.19	77	25425	20.26	ng/ul	93
21) Isophorone	9.72	82	49895	20.41	ng/ul#	93
23) 2-Nitrophenol	9.91	139	10529	20.39	ng/ul#	66
24) 2,4-Dimethylphenol	9.98	107	26102	20.87	ng/ul	91
25) Bis(2-Chloroethoxy)methane	10.20	93	23512	18.62	ng/ul#	97
27) 2,4-Dichlorophenol	10.45	162	20521	21.12	ng/ul	89
28) Naphthalene	10.85	128	60674	19.54	ng/ul	99
30) 4-Chloroaniline	10.96	127	27588	21.60	ng/ul	95
31) Hexachlorobutadiene	11.13	225	15381	21.68	ng/ul	93
32) Caprolactam	11.73	113	4841	13.46	ng/ul	95
33) 4-Chloro-3-methylphenol	12.09	107	26864	21.95	ng/ul	90
34) 2-Methylnaphthalene	12.45	142	49653	20.17	ng/ul	94
35) 1-Methylnaphthalene	12.67	142	49570	20.56	ng/ul	94

Data Path : Z:\HPCHEM1\BNA G\DATA\BG102015\
 Data File : BG019259.D
 Acq On : 20 Oct 2015 16:13
 Operator : UM/NP
 Sample : SSTDCCC020
 Misc :
 ALS Vial : 2 Sample Multiplier: 1

Instrument :
 BNA_G
 ClientSampled :

Quant Time: Oct 21 01:18:41 2015
 Quant Method : Z:\HPCHEM1\BNA G\METHODS\SOM02.2-EPA-BG101515.M
 Quant Title : SVOA CALIBRATION
 QLast Update : Tue Oct 20 06:03:40 2015
 Response via : Initial Calibration

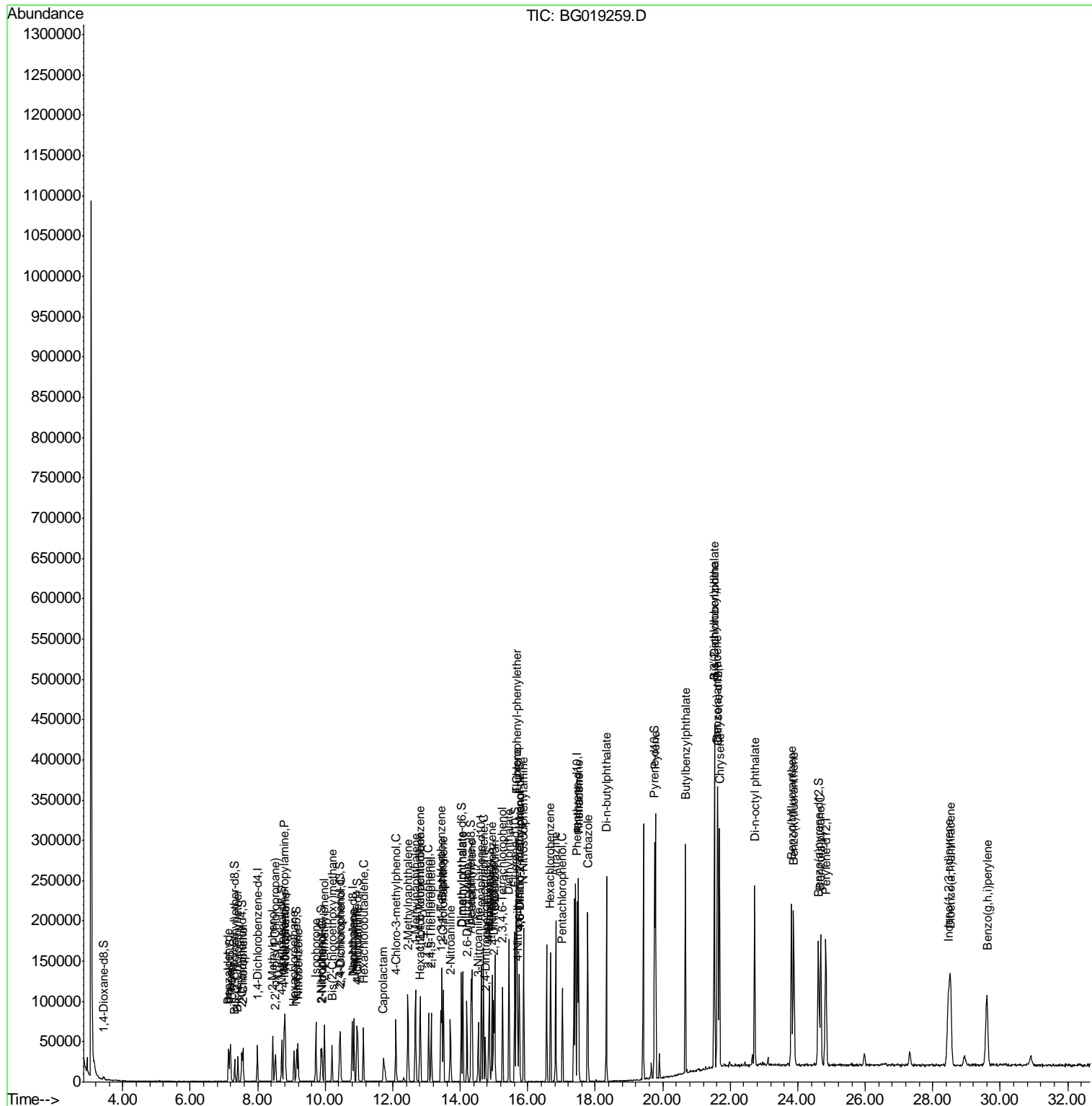
Internal Standards	R.T.	QIon	Response	Conc	Units	Dev(Min)
37) 1,2,4,5-Tetrachlorobenzene	12.82	216	29378	19.08	ng/ul	98
38) Hexachlorocyclopentadiene	12.80	237	13358	14.59	ng/ul	94
39) 2,4,6-Trichlorophenol	13.07	196	20232	21.13	ng/ul	95
40) 2,4,5-Trichlorophenol	13.14	196	21987	20.87	ng/ul	95
41) 1,1'-Biphenyl	13.45	154	71753	19.13	ng/ul#	96
42) 2-Chloronaphthalene	13.50	162	54693	18.86	ng/ul	94
43) 2-Nitroaniline	13.71	65	22563	19.89	ng/ul	92
45) Dimethylphthalate	14.08	163	84461	19.96	ng/ul	99
46) 2,6-Dinitrotoluene	14.20	165	17579	21.78	ng/ul#	84
48) Acenaphthylene	14.35	152	95428	19.05	ng/ul	98
49) 3-Nitroaniline	14.54	138	16727	21.63	ng/ul	92
50) Acenaphthene	14.69	153	65375	19.49	ng/ul	95
51) 2,4-Dinitrophenol	14.74	184	11297	24.46	ng/ul#	80
53) 4-Nitrophenol	14.86	109	18295	22.16	ng/ul#	71
54) Dibenzofuran	15.02	168	93237	19.67	ng/ul#	85
55) 2,4-Dinitrotoluene	14.99	165	26911	20.55	ng/ul#	86
56) 2,3,4,6-Tetrachlorophenol	15.25	232	23537	23.25	ng/ul#	87
57) Diethylphthalate	15.44	149	91287	20.78	ng/ul	99
59) Fluorene	15.67	166	81451	20.08	ng/ul	99
60) 4-Chlorophenyl-phenylether	15.66	204	43090	20.60	ng/ul	90
61) 4-Nitroaniline	15.70	138	19326	21.09	ng/ul#	70
64) 4,6-Dinitro-2-methylphenol	15.76	198	17813	22.60	ng/ul#	91
65) N-Nitrosodiphenylamine	15.88	169	70846	20.38	ng/ul	97
67) Hexachlorobenzene	16.68	284	31540	19.03	ng/ul	95
68) Atrazine	16.83	200	37916	22.69	ng/ul	99
69) Pentachlorophenol	17.03	266	19995	23.48	ng/ul	91
70) Phenanthrene	17.50	178	151741	21.48	ng/ul	100
72) Anthracene	17.50	178	151741	21.15	ng/ul	99
73) 1,2,3,4-Tetrachlorobenzene	13.43	216	30428	19.74	ng/uL	99
74) Pentachlorobenzene	14.95	250	32552	19.29	ng/uL	95
75) Carbazole	17.78	167	134112	21.68	ng/ul	99
76) Di-n-butylphthalate	18.33	149	173770	21.34	ng/ul#	98
80) Pyrene	19.78	202	202016	20.83	ng/ul#	90
81) Butylbenzylphthalate	20.67	149	76928	21.81	ng/ul	98
82) 3,3'-Dichlorobenzidine	21.53	252	69492	23.28	ng/ul	98
83) Benzo(a)anthracene	21.62	228	189291	20.51	ng/ul	97
84) Bis(2-ethylhexyl)phthalate	21.52	149	110481	22.67	ng/ul	98
85) Chrysene	21.68	228	175764	20.13	ng/ul	100
87) Di-n-octyl phthalate	22.73	149	187481	21.74	ng/ul	100
88) Benzo(b)fluoranthene	23.81	252	195522	21.27	ng/ul#	96
89) Benzo(k)fluoranthene	23.88	252	182704	20.26	ng/ul#	96
91) Benzo(a)pyrene	24.68	252	184781	20.91	ng/ul#	92
92) Indeno(1,2,3-cd)pyrene	28.47	276	204521	19.49	ng/ul#	92
93) Dibenzo(a,h)anthracene	28.52	278	169745	18.56	ng/ul#	92
94) Benzo(g,h,i)perylene	29.61	276	169140	19.60	ng/ul#	91

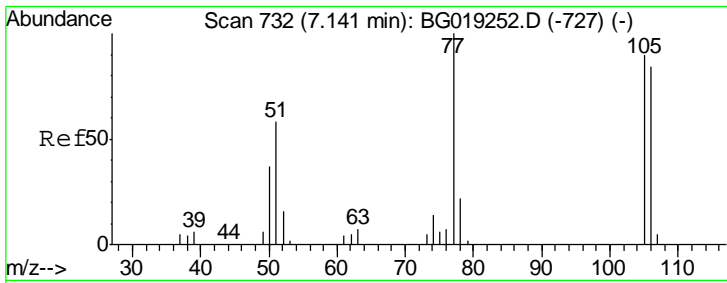
(#) = qualifier out of range (m) = manual integration (+) = signals summed

Data Path : Z:\HPCHEM1\BNA G\DATA\BG102015\
 Data File : BG019259.D
 Acq On : 20 Oct 2015 16:13
 Operator : UM/NP
 Sample : SSTDCCC020
 Misc :
 ALS Vial : 2 Sample Multiplier: 1

Instrument :
 BNA_G
 Client Sampled :

Quant Time: Oct 21 01:18:41 2015
 Quant Method : Z:\HPCHEM1\BNA G\METHODS\SOM02.2-EPA-BG101515.M
 Quant Title : SVOA CALIBRATION
 QLast Update : Tue Oct 20 06:03:40 2015
 Response via : Initial Calibration

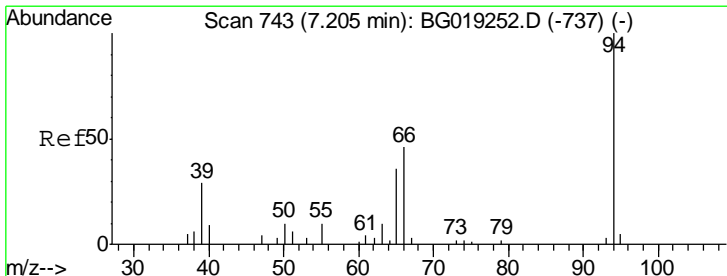
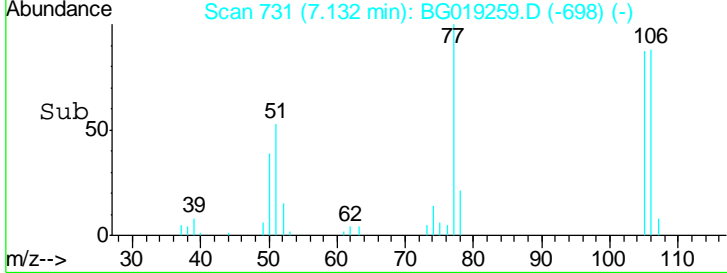
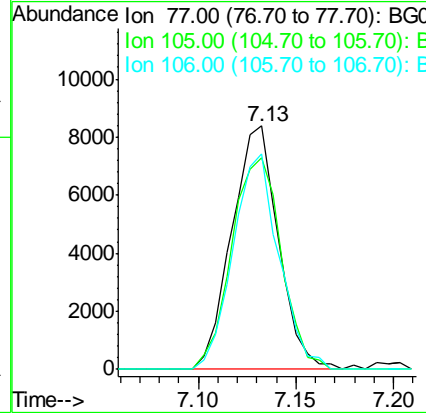
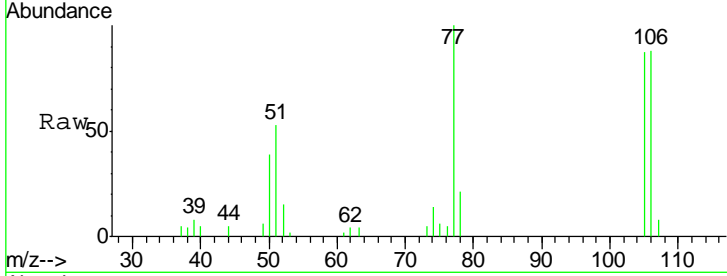




#4
Benzaldehyde
Concen: 22.05 ng/ul
RT: 7.13 min Scan# 731
Delta R.T. -0.01 min
Lab File: BG019259.D
Acq: 20 Oct 2015 16:13

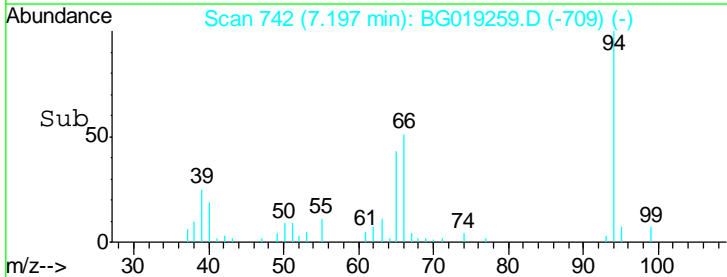
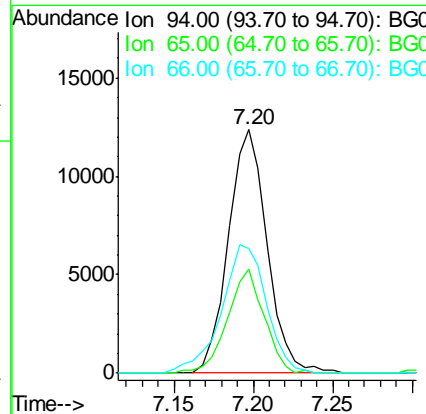
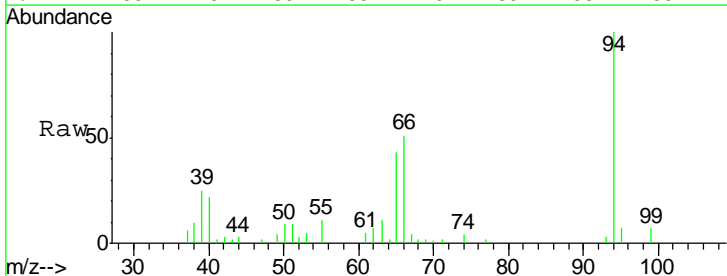
Instrument :
BNA_G
ClientSampled :

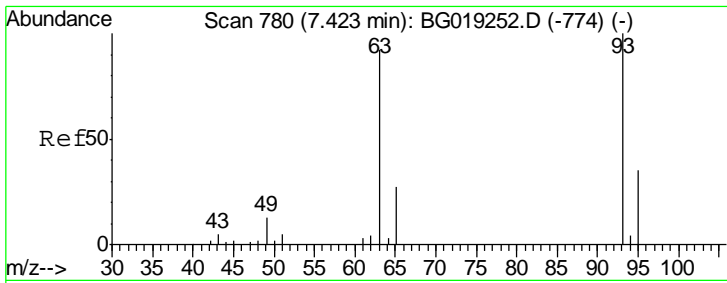
Tgt Ion	Resp	Lower	Upper
77	13857		
105	87.0	75.6	113.4
106	88.2	75.8	113.6



#6
Phenol
Concen: 18.60 ng/ul
RT: 7.20 min Scan# 742
Delta R.T. -0.01 min
Lab File: BG019259.D
Acq: 20 Oct 2015 16:13

Tgt Ion	Resp	Lower	Upper
94	20942		
65	42.6	24.9	37.3#
66	51.4	29.1	43.7#

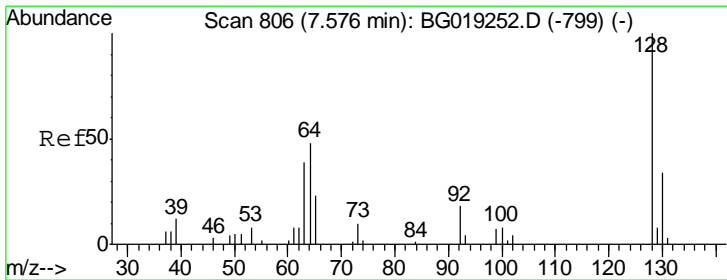
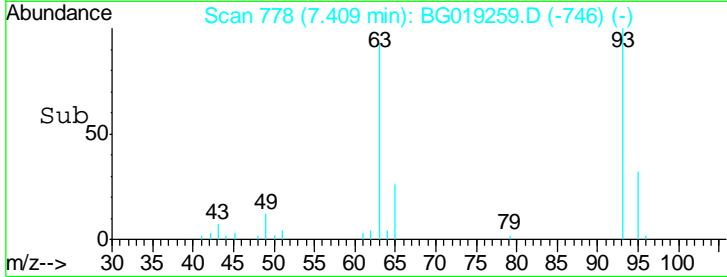
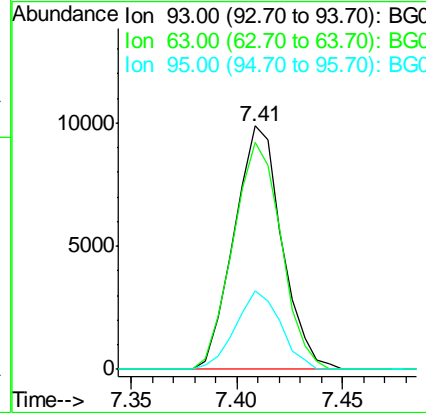
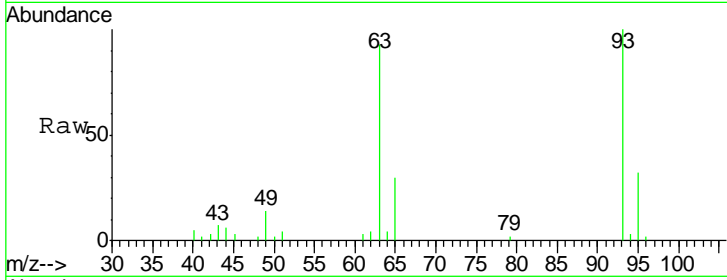




#8
 Bis(2-Chloroethyl)ether
 Concen: 19.41 ng/ul
 RT: 7.41 min Scan# 778
 Delta R.T. -0.01 min
 Lab File: BG019259.D
 Acq: 20 Oct 2015 16:13

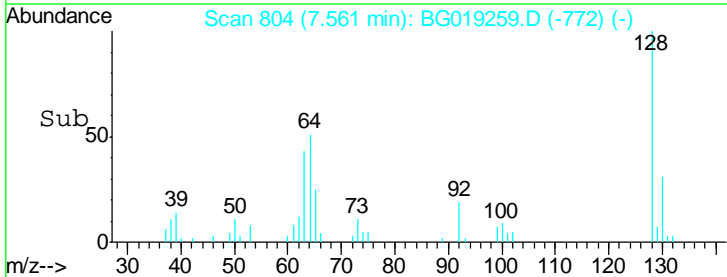
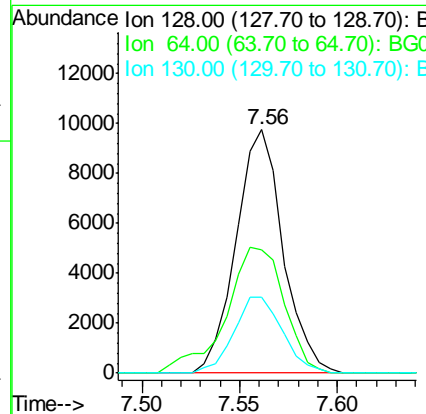
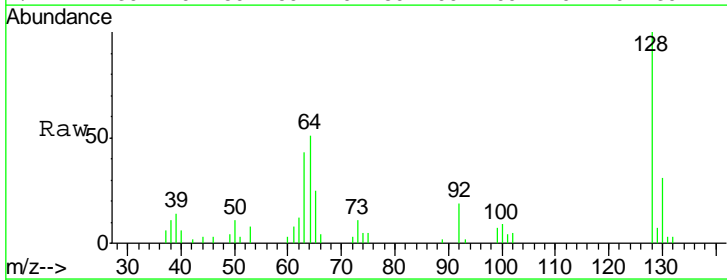
Instrument :
 BNA_G
 ClientSampled :

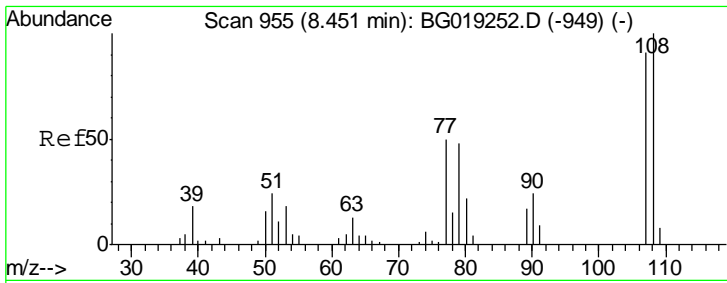
Tgt Ion	Resp	Lower	Upper
93	15498		
93	100		
63	93.2	73.2	109.8
95	32.5	27.0	40.6



#10
 2-Chlorophenol
 Concen: 20.08 ng/ul
 RT: 7.56 min Scan# 804
 Delta R.T. -0.01 min
 Lab File: BG019259.D
 Acq: 20 Oct 2015 16:13

Tgt Ion	Resp	Lower	Upper
128	16246		
128	100		
64	50.9	43.3	64.9
130	31.2	26.5	39.7

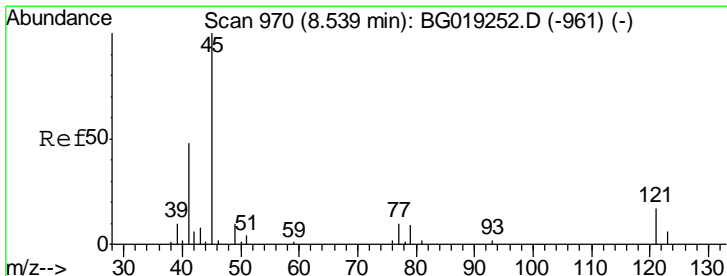
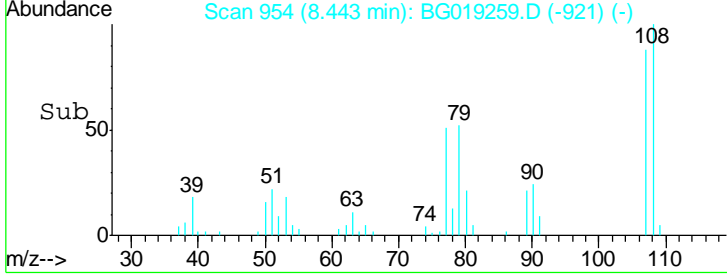
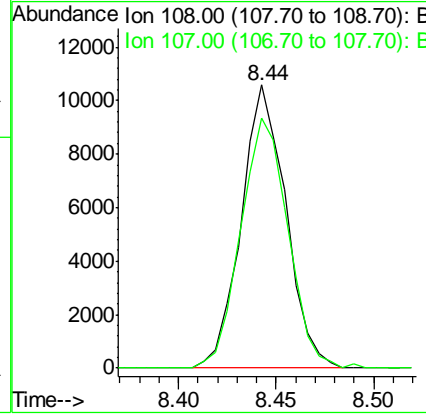
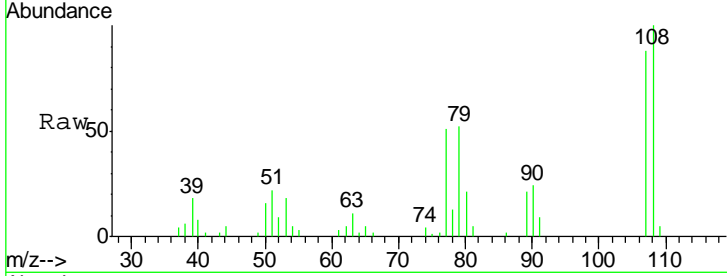




#11
 2-Methylphenol
 Concen: 18.92 ng/ul
 RT: 8.44 min Scan# 954
 Delta R.T. -0.01 min
 Lab File: BG019259.D
 Acq: 20 Oct 2015 16:13

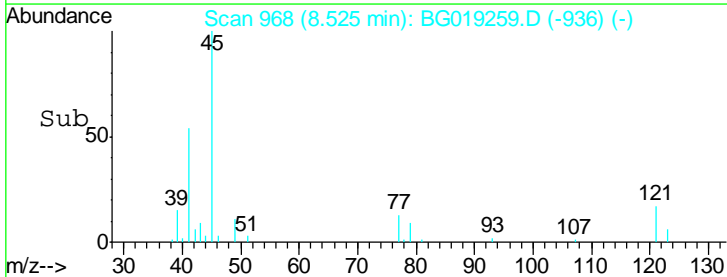
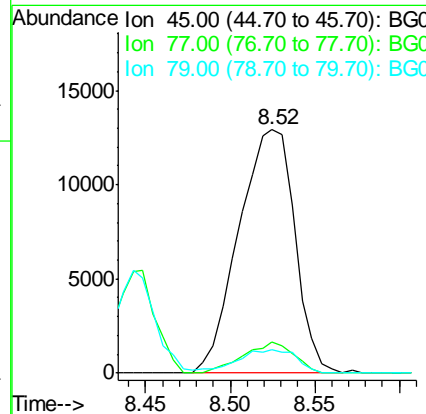
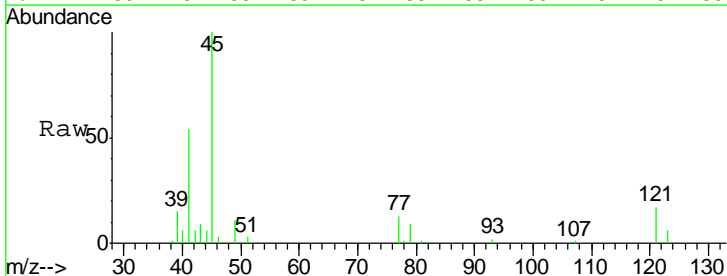
Instrument :
 BNA_G
 ClientSampled :

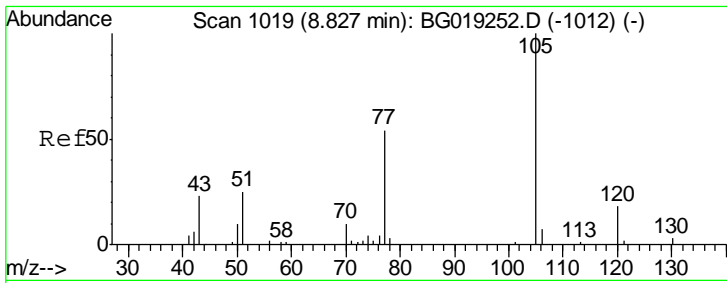
Tgt Ion: 108 Resp: 16721
 Ion Ratio Lower Upper
 108 100
 107 88.4 76.7 115.1



#12
 2,2'-oxybis(1-Chloropropane)
 Concen: 16.69 ng/ul
 RT: 8.52 min Scan# 968
 Delta R.T. -0.01 min
 Lab File: BG019259.D
 Acq: 20 Oct 2015 16:13

Tgt Ion: 45 Resp: 29712
 Ion Ratio Lower Upper
 45 100
 77 13.0 8.2 12.2#
 79 9.4 7.4 11.0

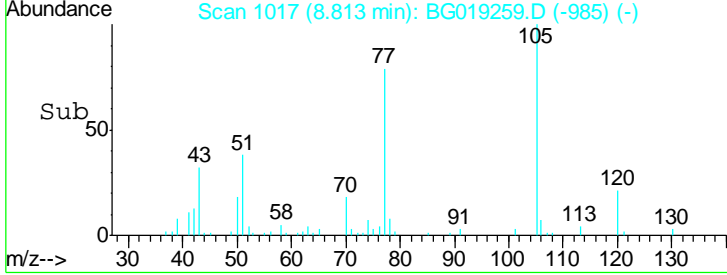
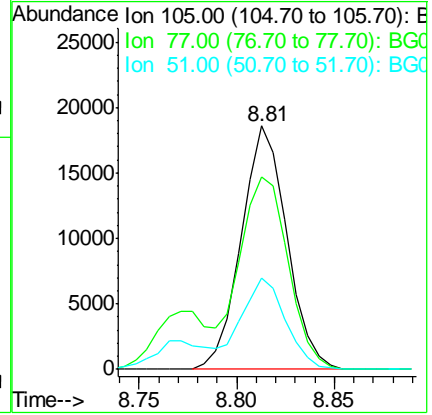
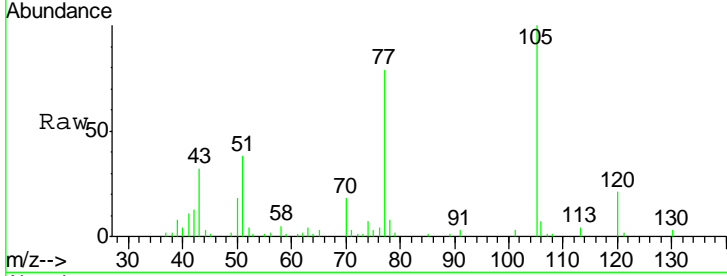




#14
 Acetophenone
 Concen: 19.42 ng/ul
 RT: 8.81 min Scan# 1017
 Delta R.T. -0.01 min
 Lab File: BG019259.D
 Acq: 20 Oct 2015 16:13

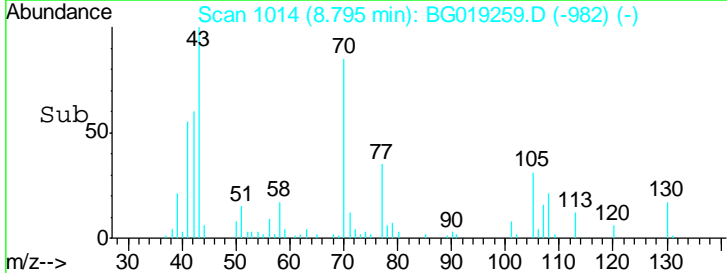
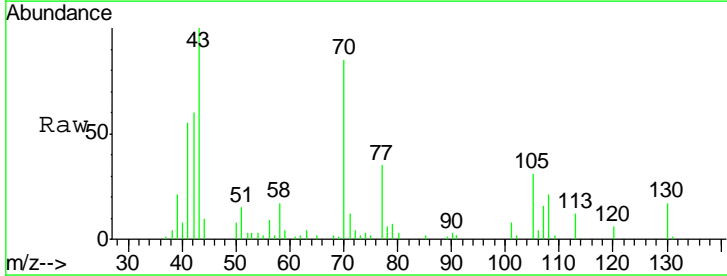
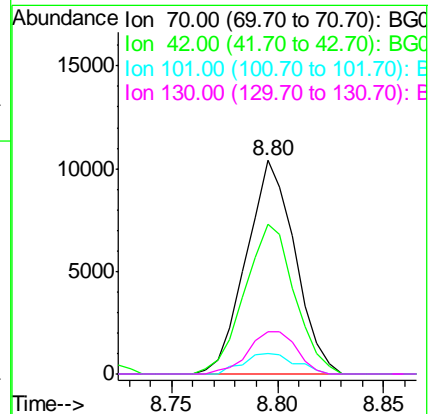
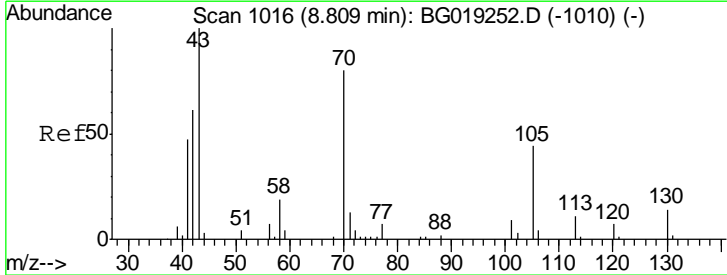
Instrument :
 BNA_G
 ClientSampled :

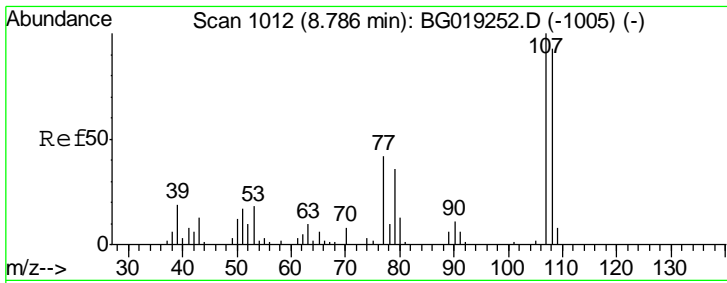
Tgt Ion	Resp	Lower	Upper
105	30024		
77	79.3	63.8	95.6
51	37.7	26.1	39.1



#15
 N-Nitroso-di-n-propylamine
 Concen: 21.12 ng/ul
 RT: 8.80 min Scan# 1014
 Delta R.T. -0.01 min
 Lab File: BG019259.D
 Acq: 20 Oct 2015 16:13

Tgt Ion	Resp	Lower	Upper
70	16683		
70	100		
42	70.2	53.6	80.4
101	9.8	7.9	11.9
130	19.6	16.5	24.7

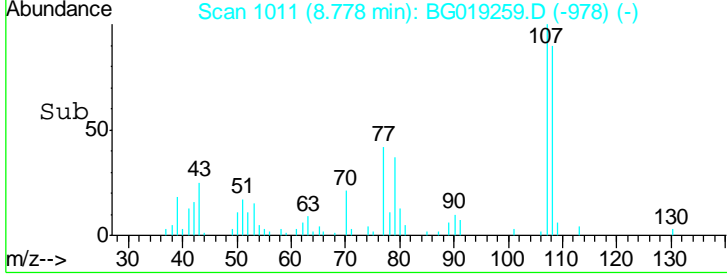
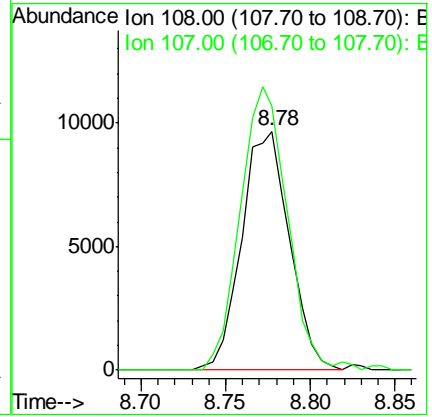
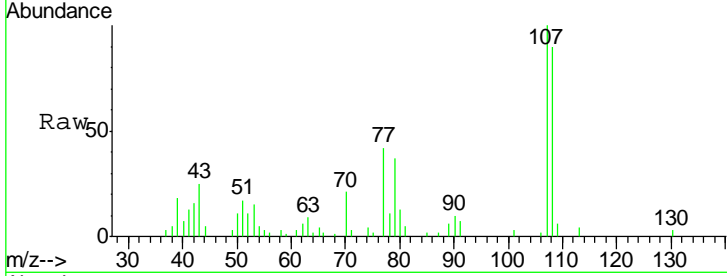




#16
 4-Methylphenol
 Concen: 19.17 ng/ul
 RT: 8.78 min Scan# 1011
 Delta R.T. -0.01 min
 Lab File: BG019259.D
 Acq: 20 Oct 2015 16:13

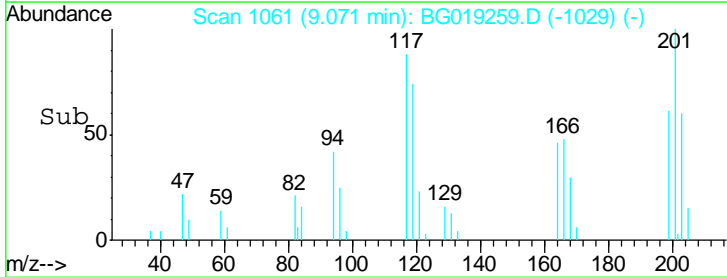
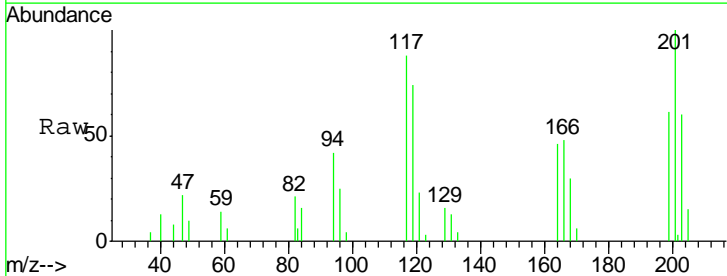
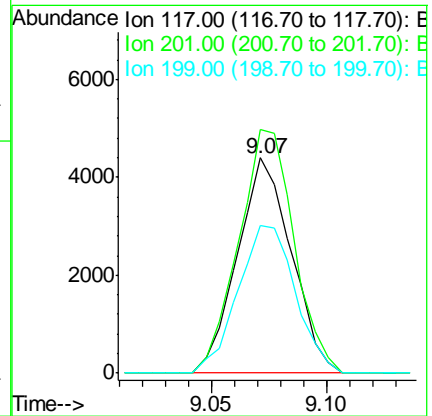
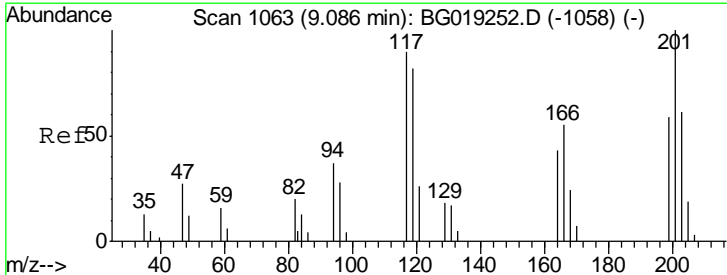
Instrument :
 BNA_G
 ClientSampled :

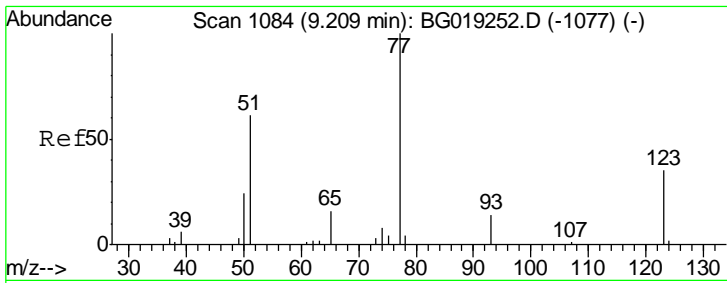
Tgt Ion	Resp	Lower	Upper
108	19006		
107	110.7	86.6	130.0



#17
 Hexachloroethane
 Concen: 20.46 ng/ul
 RT: 9.07 min Scan# 1061
 Delta R.T. -0.01 min
 Lab File: BG019259.D
 Acq: 20 Oct 2015 16:13

Tgt Ion	Resp	Lower	Upper
117	7127		
201	116.9	91.4	137.0
199	68.8	58.7	88.1

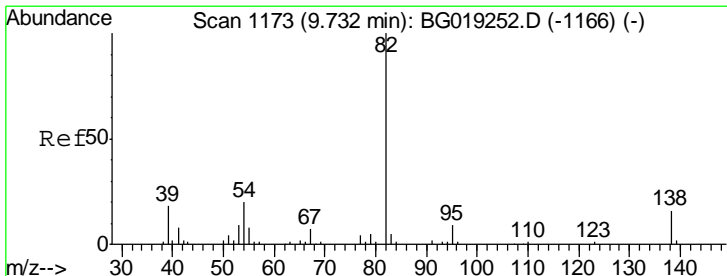
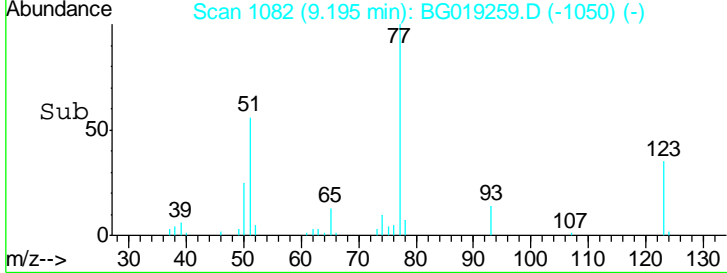
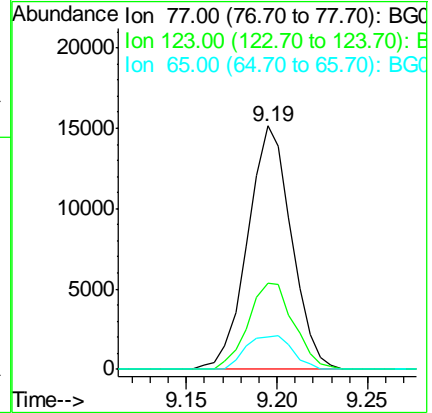
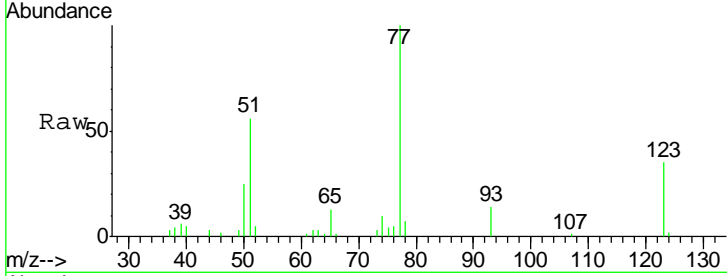




#20
 Nitrobenzene
 Concen: 20.26 ng/ul
 RT: 9.19 min Scan# 1082
 Delta R.T. -0.01 min
 Lab File: BG019259.D
 Acq: 20 Oct 2015 16:13

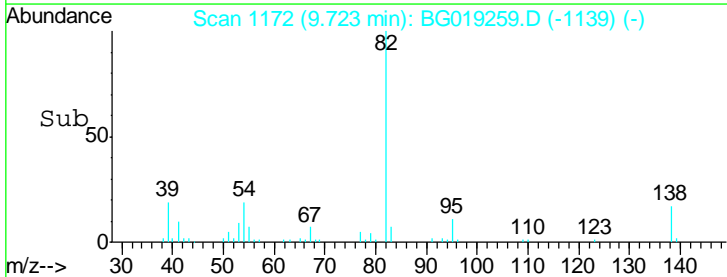
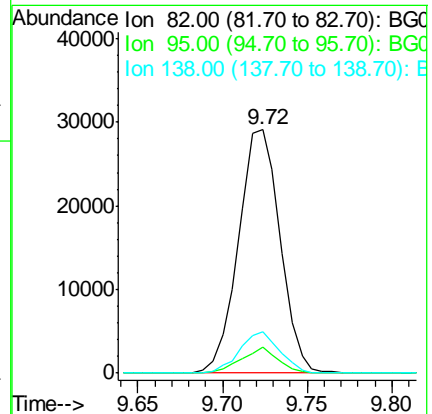
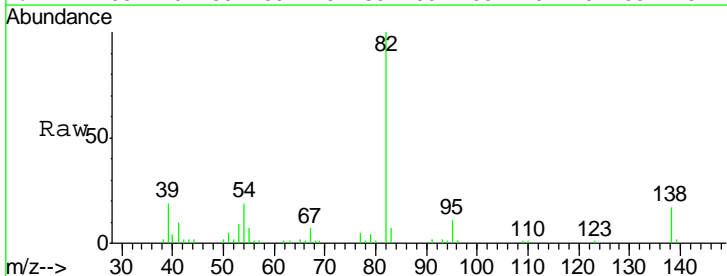
Instrument :
 BNA_G
 ClientSampled :

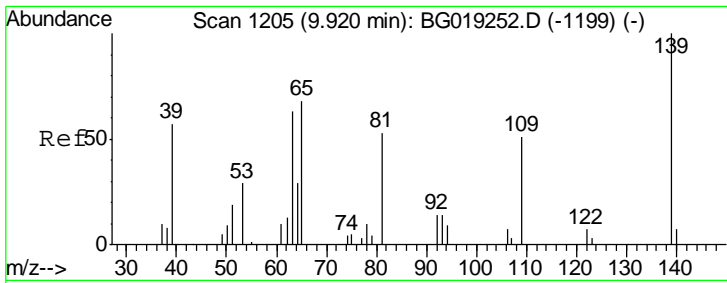
Tgt Ion	Resp	Lower	Upper
77	100		
123	35.2	32.6	48.8
65	13.3	10.6	15.8



#21
 Isophorone
 Concen: 20.41 ng/ul
 RT: 9.72 min Scan# 1172
 Delta R.T. -0.01 min
 Lab File: BG019259.D
 Acq: 20 Oct 2015 16:13

Tgt Ion	Resp	Lower	Upper
82	100		
95	10.9	5.1	7.7#
138	16.8	12.2	18.2

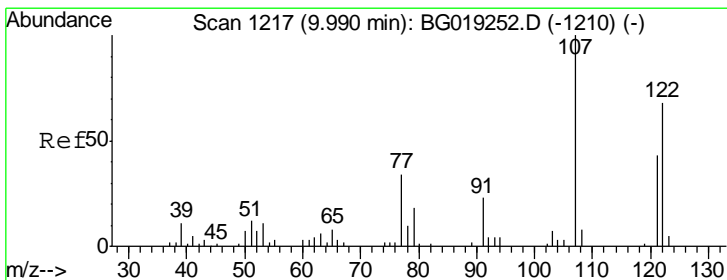
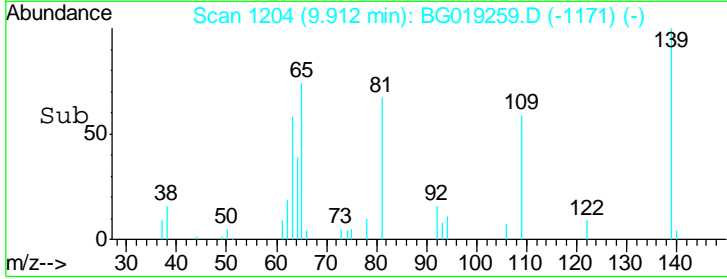
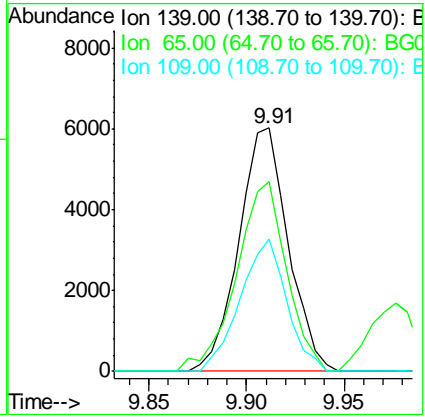
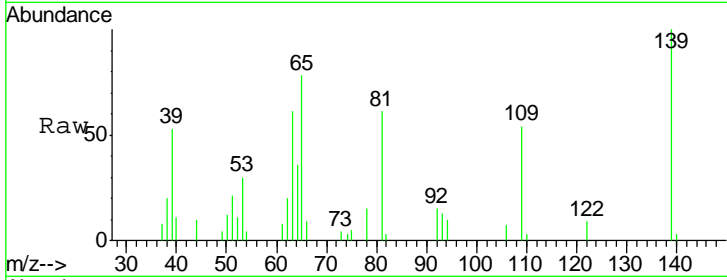




#23
 2-Nitrophenol
 Concen: 20.39 ng/ul
 RT: 9.91 min Scan# 1204
 Delta R.T. -0.01 min
 Lab File: BG019259.D
 Acq: 20 Oct 2015 16:13

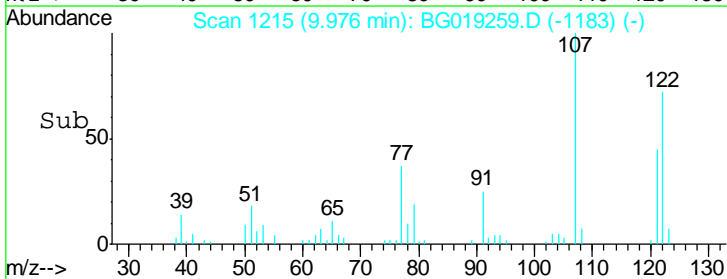
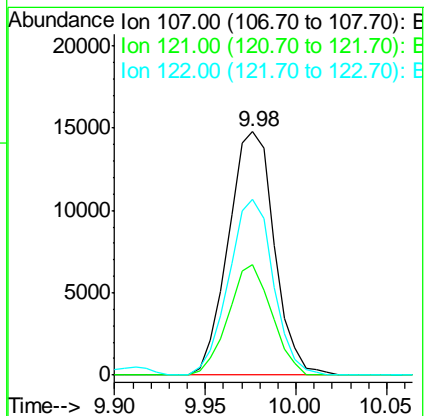
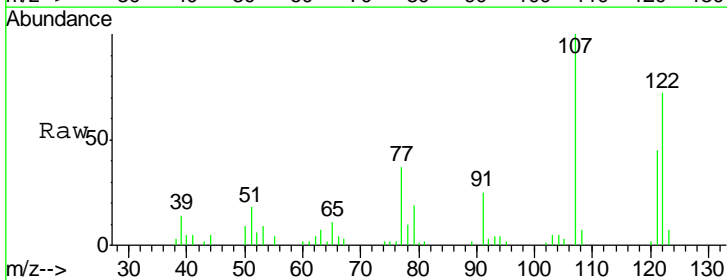
Instrument :
 BNA_G
 ClientSampled :

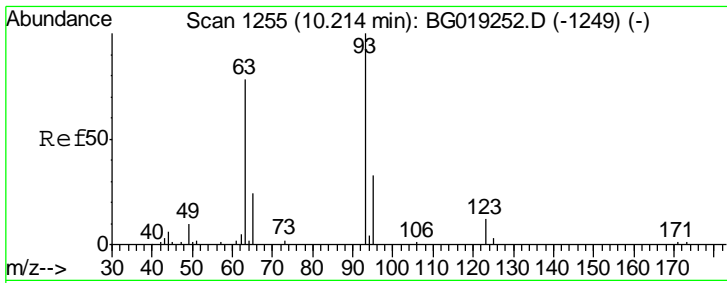
Tgt Ion	Resp	Lower	Upper
139	10529		
65	78.1	45.6	68.4#
109	54.5	24.7	37.1#



#24
 2,4-Dimethylphenol
 Concen: 20.87 ng/ul
 RT: 9.98 min Scan# 1215
 Delta R.T. -0.01 min
 Lab File: BG019259.D
 Acq: 20 Oct 2015 16:13

Tgt Ion	Resp	Lower	Upper
107	26102		
121	45.1	37.2	55.8
122	72.3	67.6	101.4

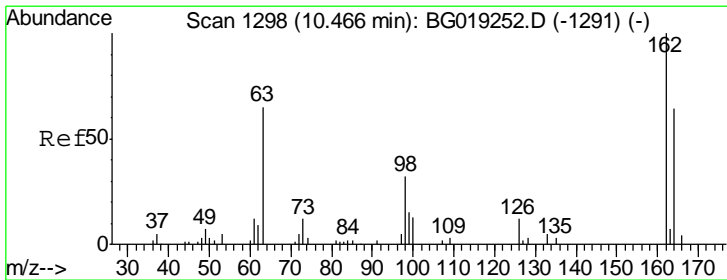
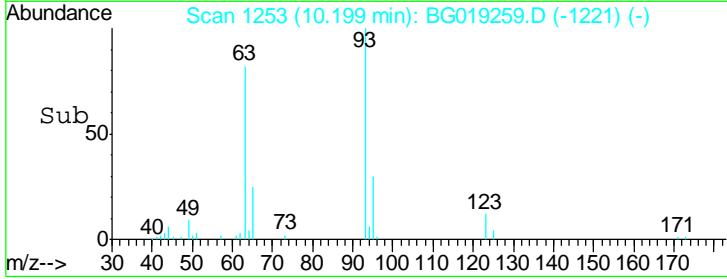
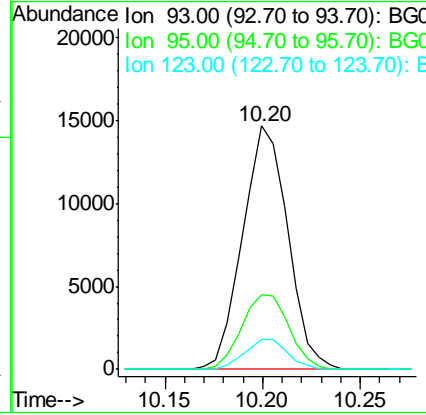
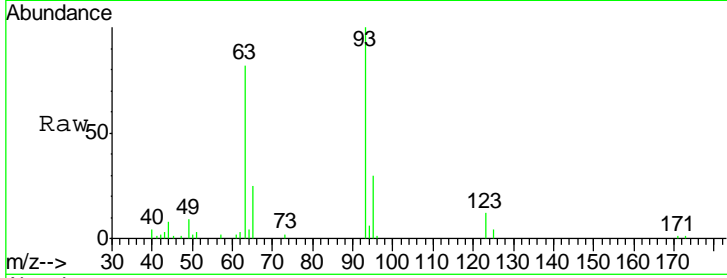




#25
 Bis(2-Chloroethoxy)methane
 Concen: 18.62 ng/ul
 RT: 10.20 min Scan# 1253
 Delta R.T. -0.01 min
 Lab File: BG019259.D
 Acq: 20 Oct 2015 16:13

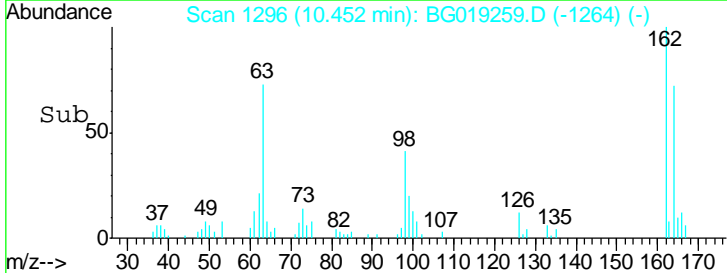
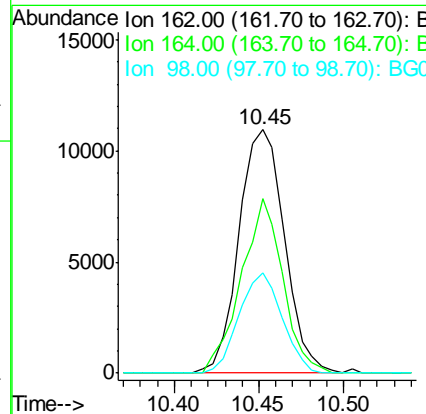
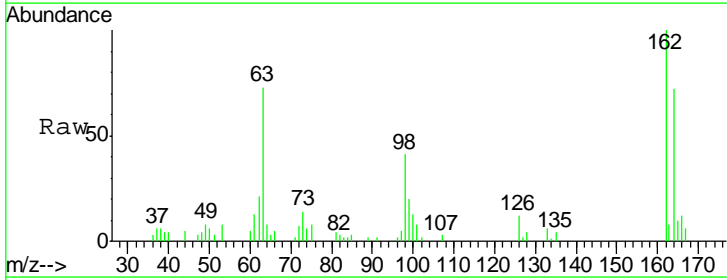
Instrument :
 BNA_G
 ClientSampled :

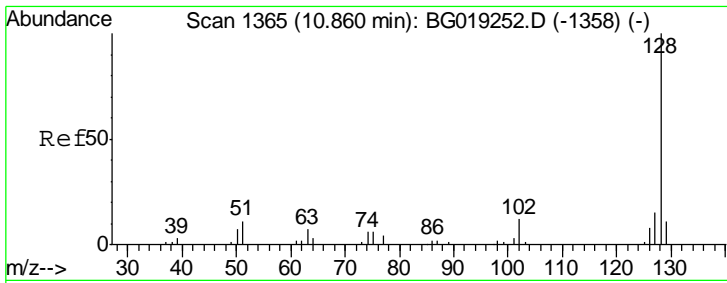
Tgt Ion	Resp	Lower	Upper
93	23512		
93	100		
95	30.4	25.4	38.0
123	12.1	8.0	12.0#



#27
 2,4-Dichlorophenol
 Concen: 21.12 ng/ul
 RT: 10.45 min Scan# 1296
 Delta R.T. -0.01 min
 Lab File: BG019259.D
 Acq: 20 Oct 2015 16:13

Tgt Ion	Resp	Lower	Upper
162	20521		
162	100		
164	71.8	50.0	75.0
98	41.1	29.0	43.6

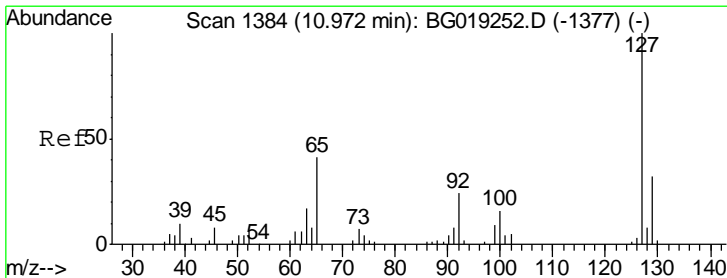
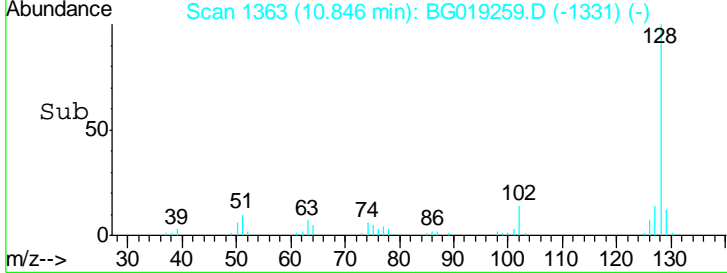
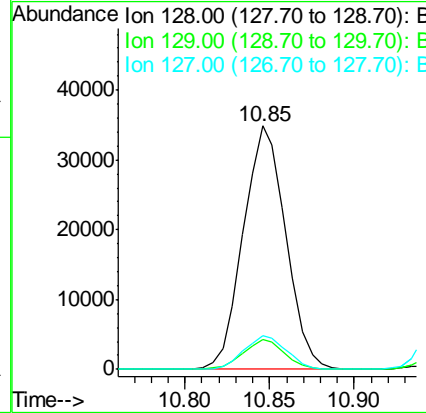
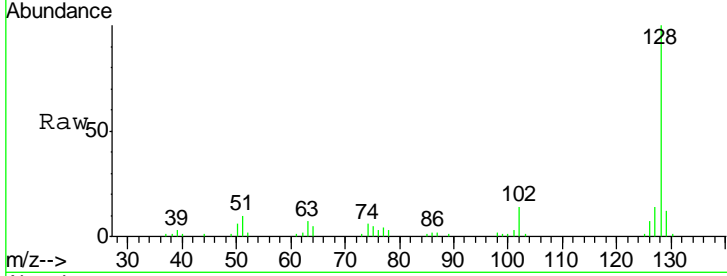




#28
 Naphthalene
 Concen: 19.54 ng/ul
 RT: 10.85 min Scan# 1363
 Delta R.T. -0.01 min
 Lab File: BG019259.D
 Acq: 20 Oct 2015 16:13

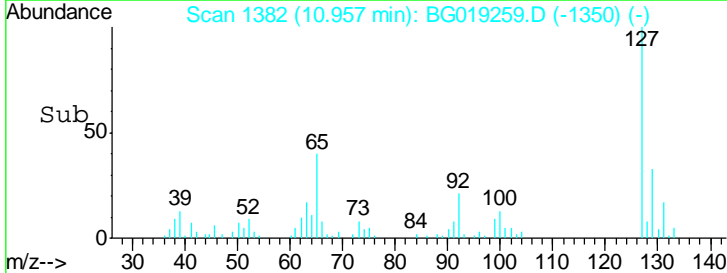
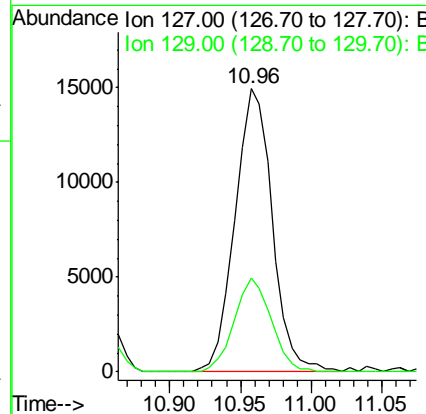
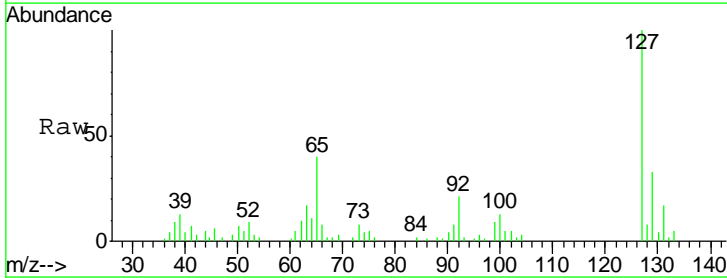
Instrument :
 BNA_G
 ClientSampled :

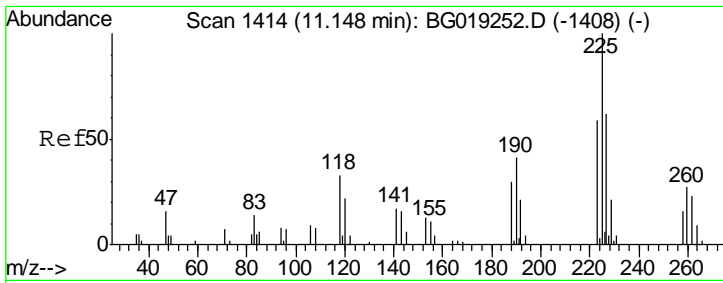
Tgt Ion	Resp	Lower	Upper
128	60674		
129	12.3	9.6	14.4
127	13.8	11.3	16.9



#30
 4-Chloroaniline
 Concen: 21.60 ng/ul
 RT: 10.96 min Scan# 1382
 Delta R.T. -0.01 min
 Lab File: BG019259.D
 Acq: 20 Oct 2015 16:13

Tgt Ion	Resp	Lower	Upper
127	27588		
129	33.0	24.3	36.5

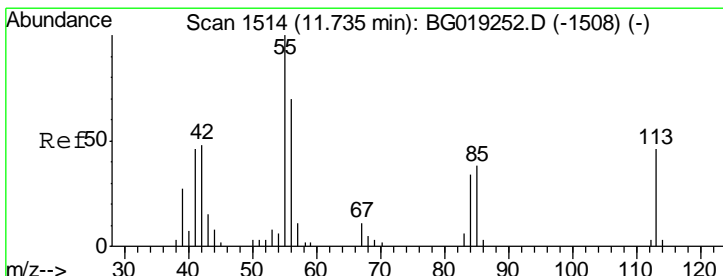
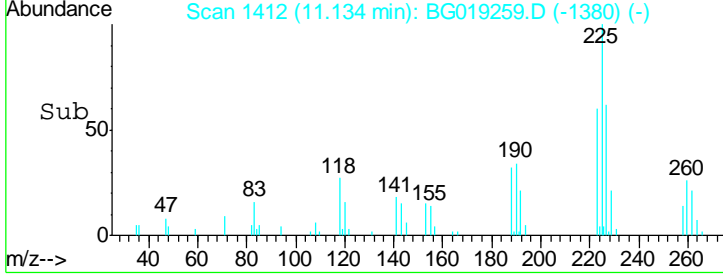
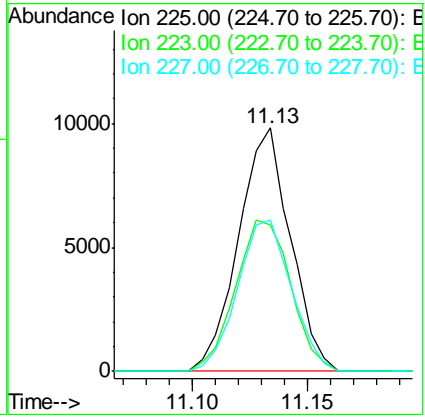
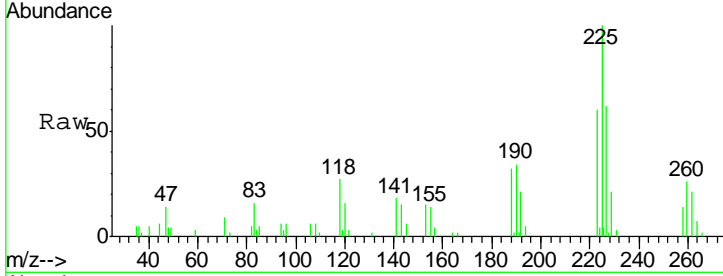




#31
 Hexachlorobutadiene
 Concen: 21.68 ng/ul
 RT: 11.13 min Scan# 1412
 Delta R.T. -0.01 min
 Lab File: BG019259.D
 Acq: 20 Oct 2015 16:13

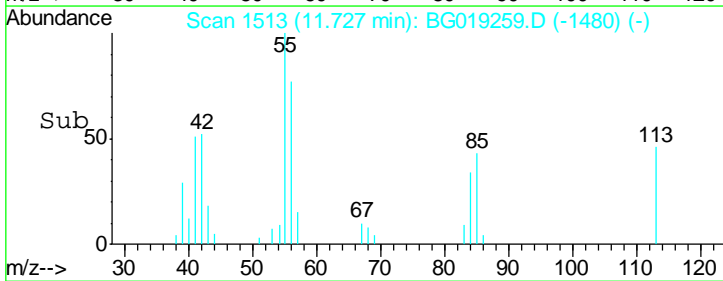
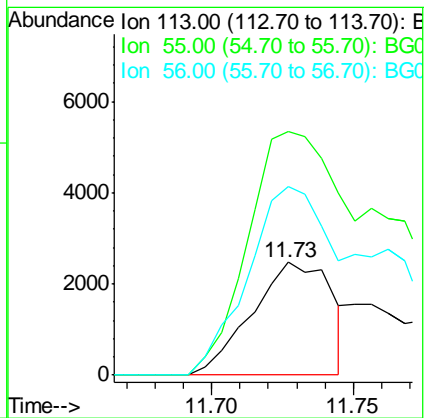
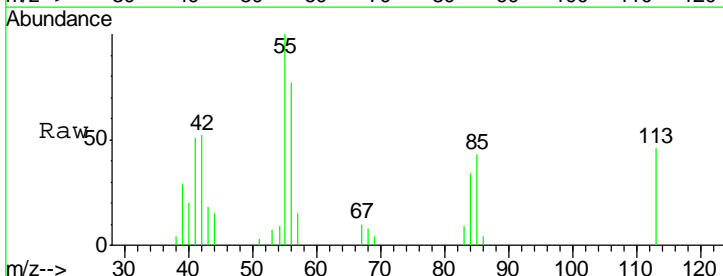
Instrument :
 BNA_G
 ClientSampled :

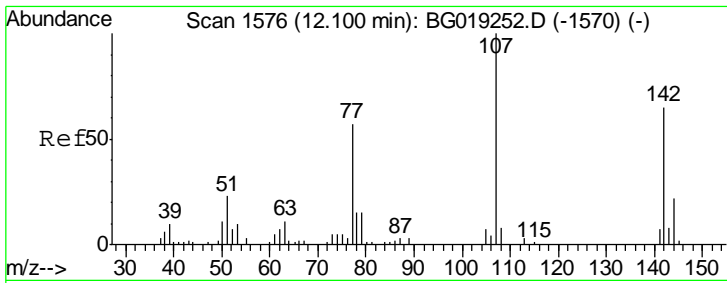
Tgt Ion	Resp	Lower	Upper
225	15381		
223	60.3	52.6	79.0
227	62.1	54.0	81.0



#32
 Caprolactam
 Concen: 13.46 ng/ul
 RT: 11.73 min Scan# 1513
 Delta R.T. -0.01 min
 Lab File: BG019259.D
 Acq: 20 Oct 2015 16:13

Tgt Ion	Resp	Lower	Upper
113	4841		
55	216.5	169.3	253.9
56	167.3	125.8	188.8



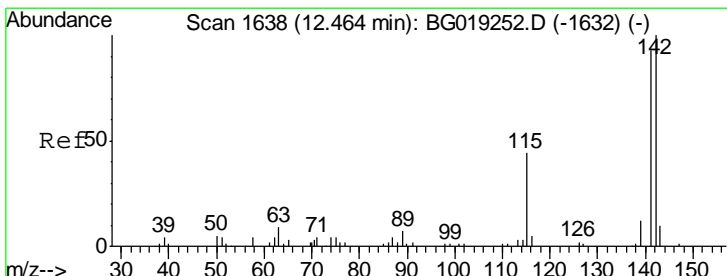
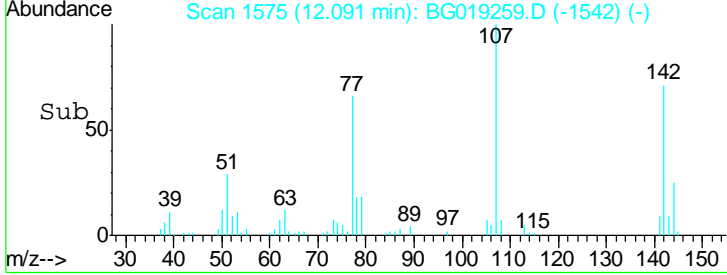
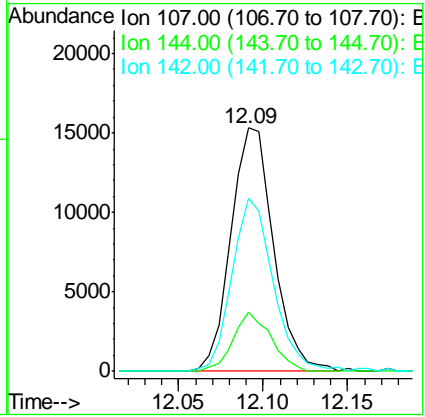
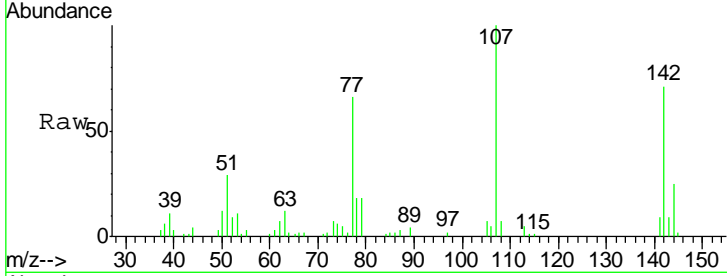


#33
 4-Chloro-3-methylphenol
 Concen: 21.95 ng/ul
 RT: 12.09 min Scan# 1575
 Delta R.T. -0.01 min
 Lab File: BG019259.D
 Acq: 20 Oct 2015 16:13

Instrument :
 BNA_G
 ClientSampled :

Tgt Ion:107 Resp: 26864

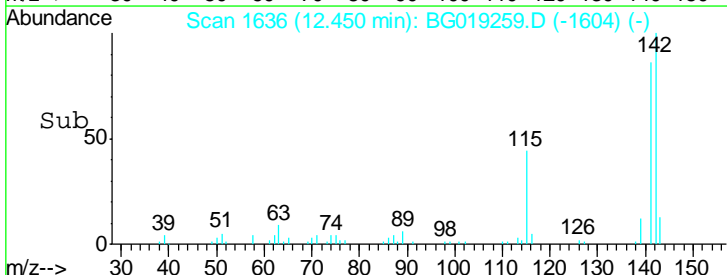
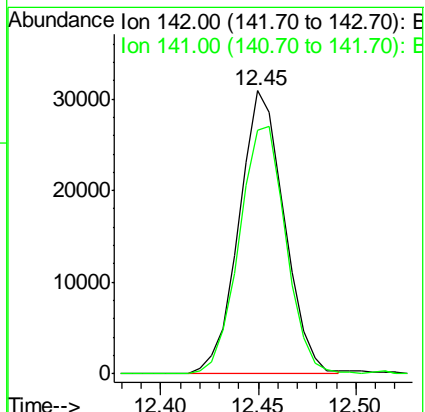
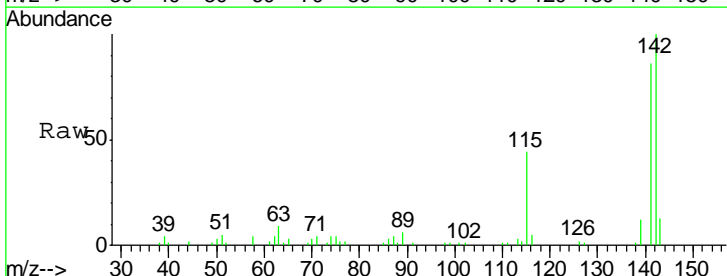
Ion	Ratio	Lower	Upper
107	100		
144	24.5	20.9	31.3
142	71.1	65.6	98.4

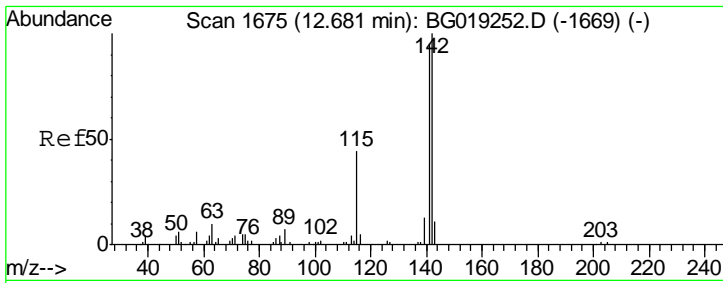


#34
 2-Methylnaphthalene
 Concen: 20.17 ng/ul
 RT: 12.45 min Scan# 1636
 Delta R.T. -0.01 min
 Lab File: BG019259.D
 Acq: 20 Oct 2015 16:13

Tgt Ion:142 Resp: 49653

Ion	Ratio	Lower	Upper
142	100		
141	86.0	73.4	110.0

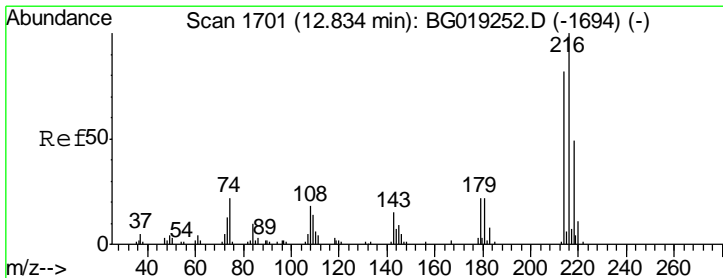
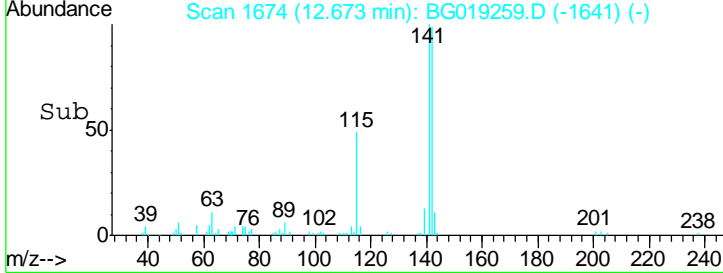
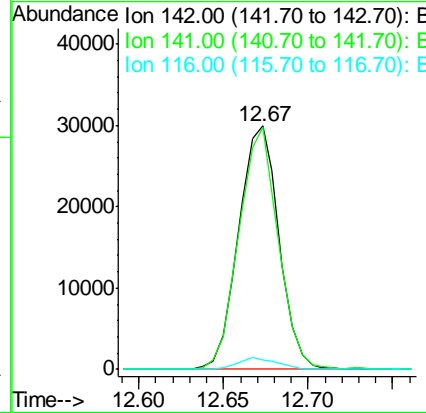
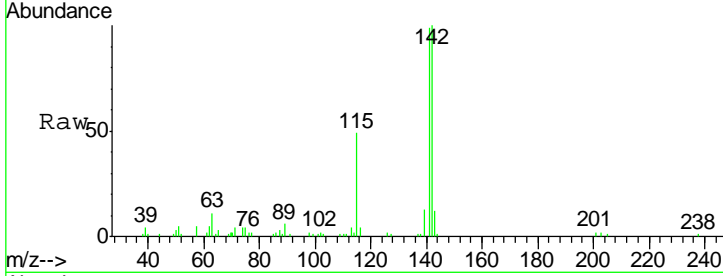




#35
 1-Methylnaphthalene
 Concen: 20.56 ng/ul
 RT: 12.67 min Scan# 1674
 Delta R.T. -0.01 min
 Lab File: BG019259.D
 Acq: 20 Oct 2015 16:13

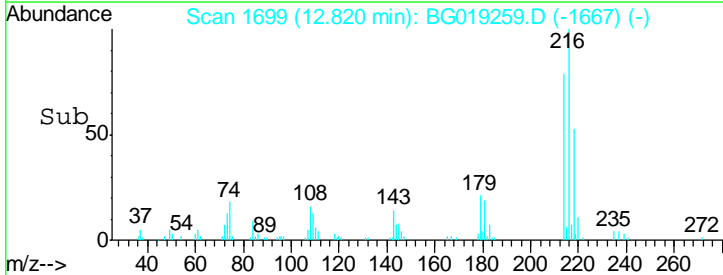
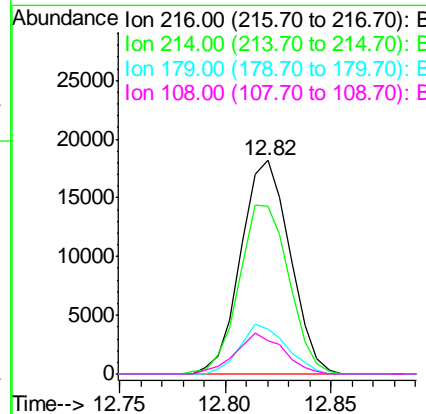
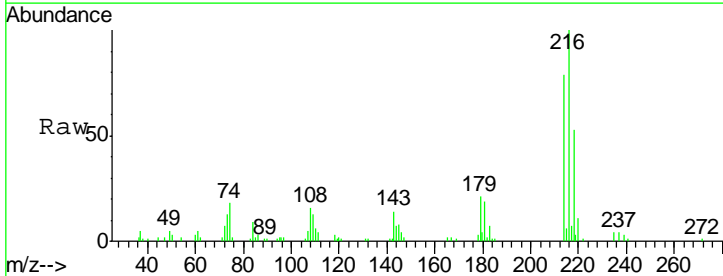
Instrument :
 BNA_G
 ClientSampled :

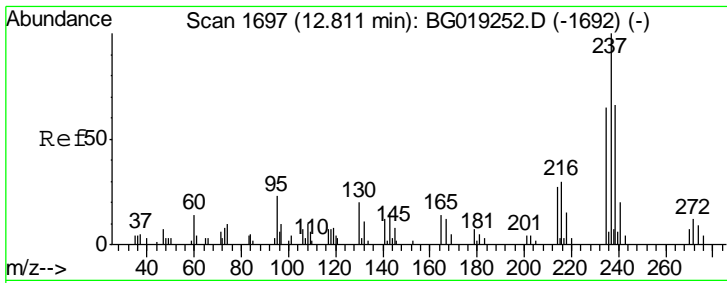
Tgt Ion	Resp	Lower	Upper
142	100		
141	99.5	74.8	112.2
116	4.1	3.2	4.8



#37
 1,2,4,5-Tetrachlorobenzene
 Concen: 19.08 ng/ul
 RT: 12.82 min Scan# 1699
 Delta R.T. -0.01 min
 Lab File: BG019259.D
 Acq: 20 Oct 2015 16:13

Tgt Ion	Resp	Lower	Upper
216	100		
214	78.6	62.6	94.0
179	21.3	14.6	22.0
108	15.6	12.9	19.3

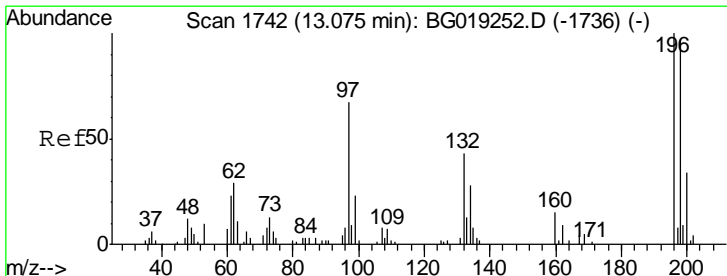
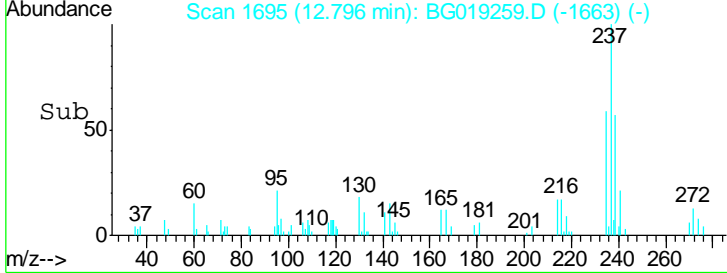
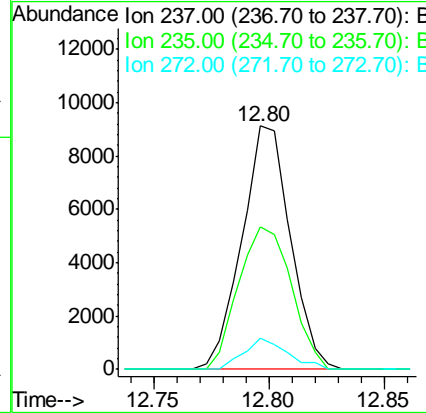
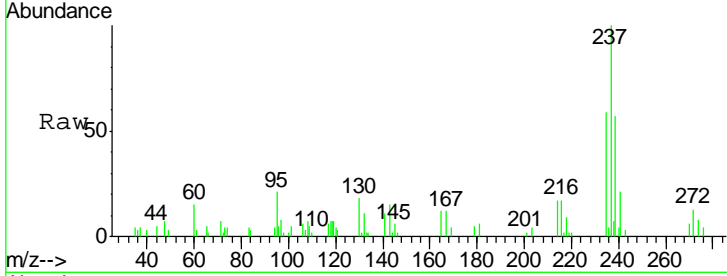




#38
 Hexachlorocyclopentadiene
 Concen: 14.59 ng/ul
 RT: 12.80 min Scan# 1695
 Delta R.T. -0.01 min
 Lab File: BG019259.D
 Acq: 20 Oct 2015 16:13

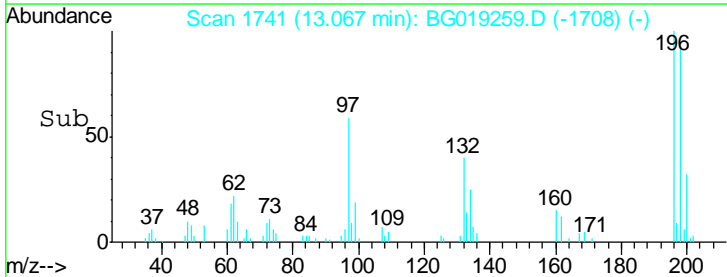
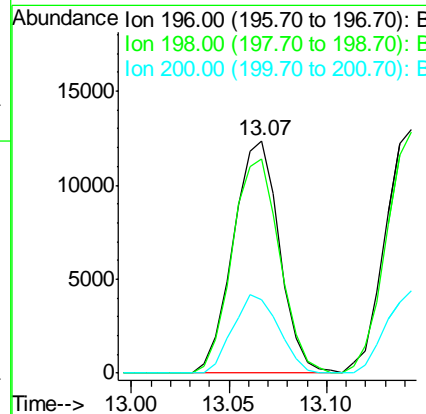
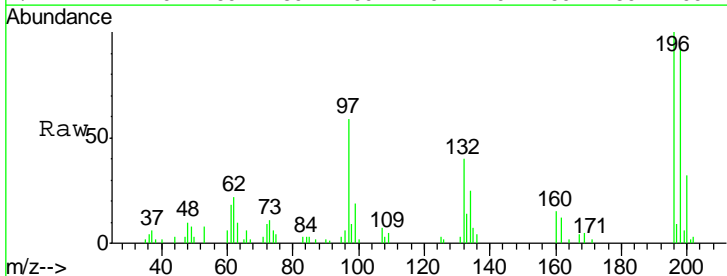
Instrument :
 BNA_G
 ClientSampled :

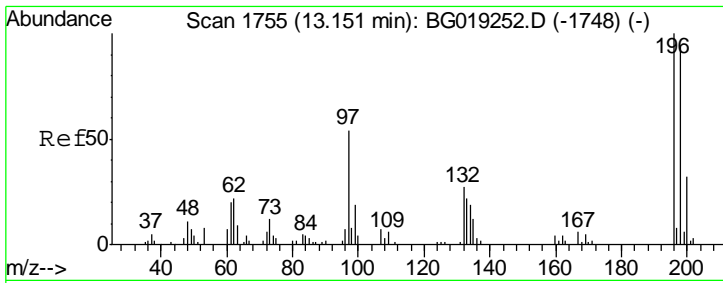
Tgt Ion	Resp	Lower	Upper
237	13358		
235	58.7	51.7	77.5
272	13.0	10.2	15.2



#39
 2,4,6-Trichlorophenol
 Concen: 21.13 ng/ul
 RT: 13.07 min Scan# 1741
 Delta R.T. -0.01 min
 Lab File: BG019259.D
 Acq: 20 Oct 2015 16:13

Tgt Ion	Resp	Lower	Upper
196	20232		
198	91.9	79.0	118.6
200	31.7	25.8	38.6

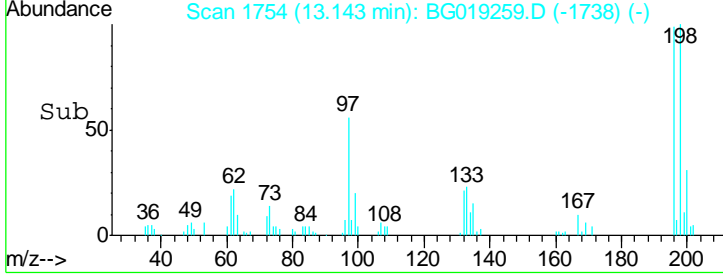
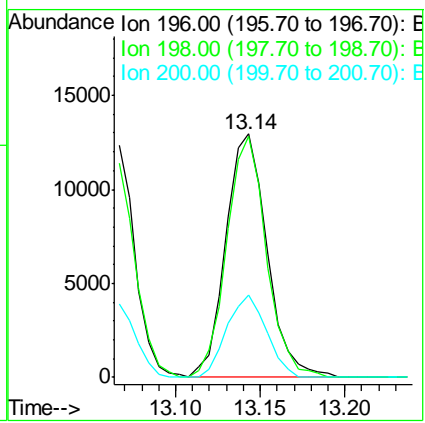
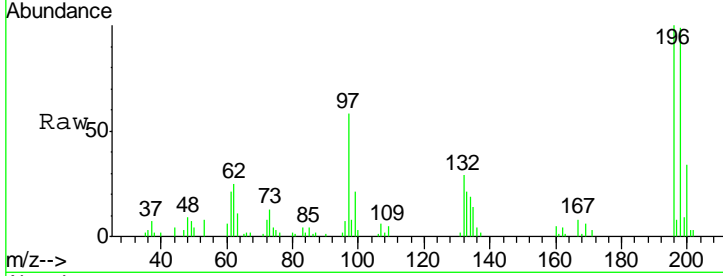




#40
 2,4,5-Trichlorophenol
 Concen: 20.87 ng/ul
 RT: 13.14 min Scan# 1754
 Delta R.T. -0.01 min
 Lab File: BG019259.D
 Acq: 20 Oct 2015 16:13

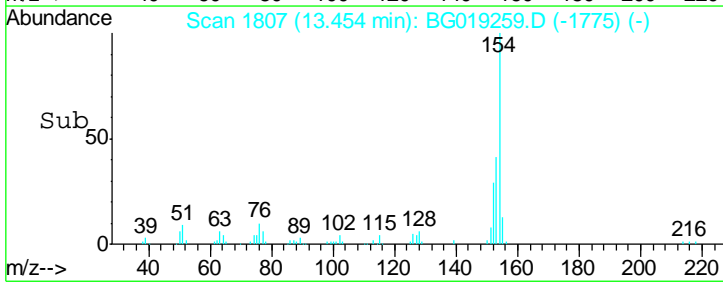
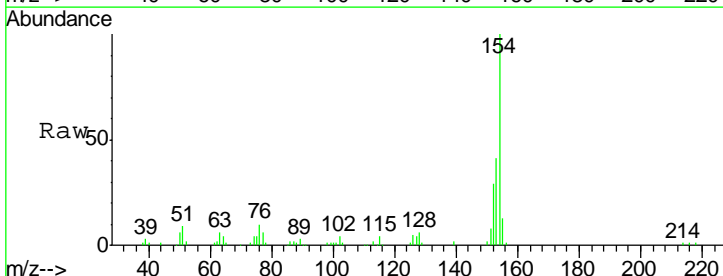
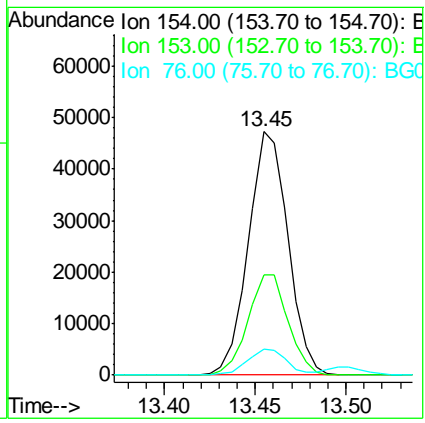
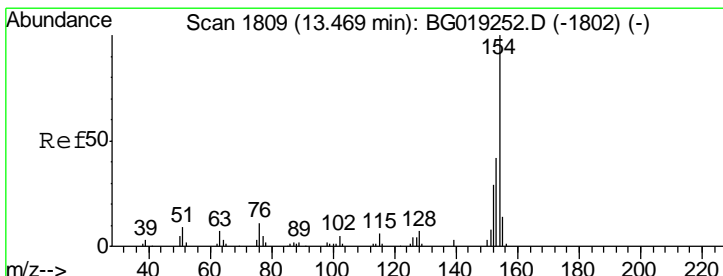
Instrument :
 BNA_G
 ClientSampled :

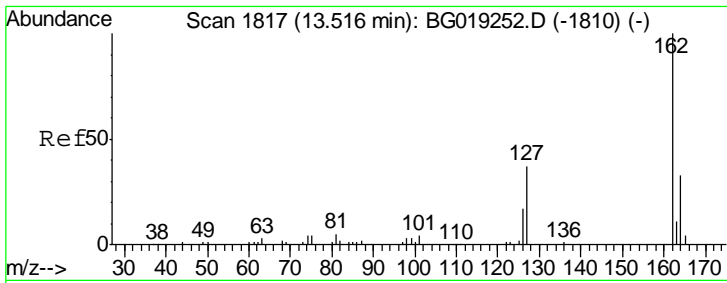
Tgt Ion	Resp	Lower	Upper
196	100		
198	98.8	73.9	110.9
200	33.7	27.1	40.7



#41
 1,1'-Biphenyl
 Concen: 19.13 ng/ul
 RT: 13.45 min Scan# 1807
 Delta R.T. -0.01 min
 Lab File: BG019259.D
 Acq: 20 Oct 2015 16:13

Tgt Ion	Resp	Lower	Upper
154	100		
153	41.1	31.4	47.0
76	10.5	10.8	16.2#

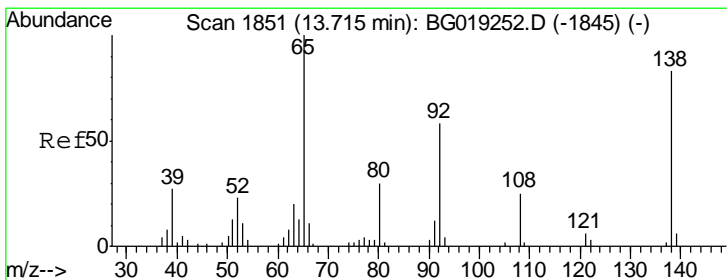
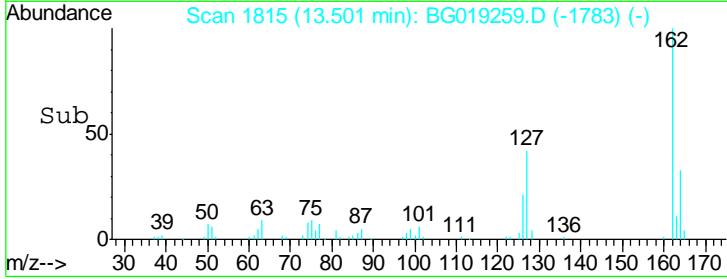
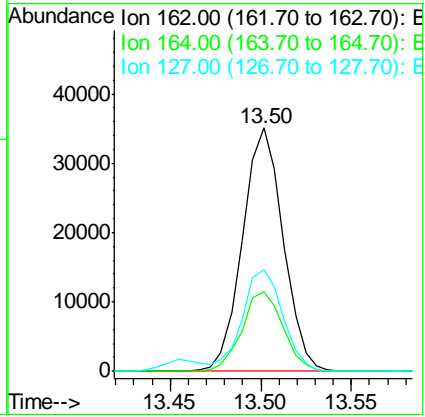
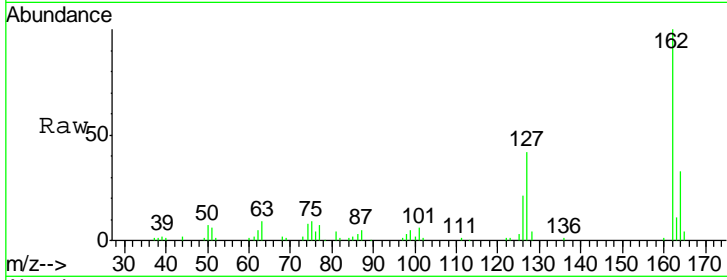




#42
 2-Chloronaphthalene
 Concen: 18.86 ng/ul
 RT: 13.50 min Scan# 1815
 Delta R.T. -0.01 min
 Lab File: BG019259.D
 Acq: 20 Oct 2015 16:13

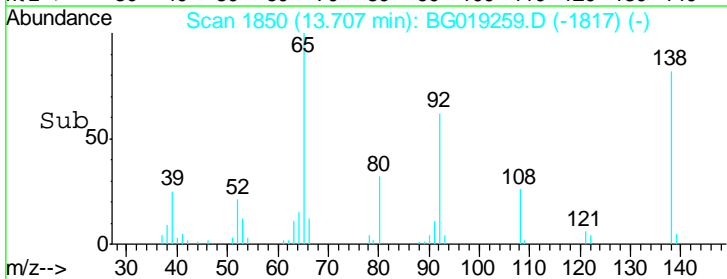
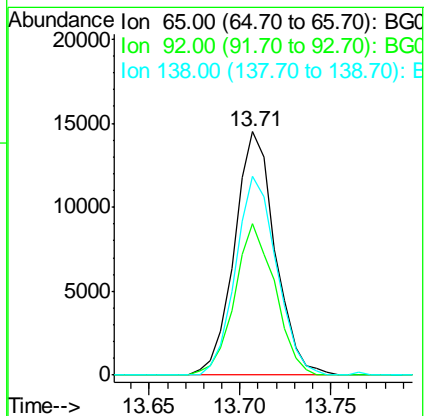
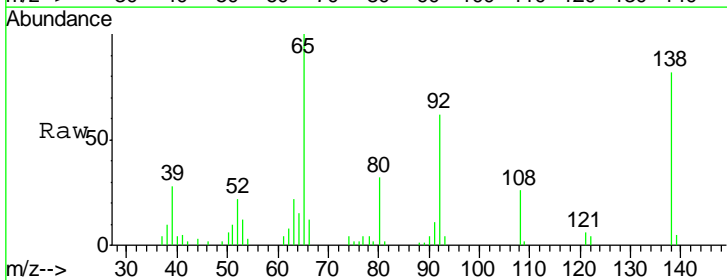
Instrument :
 BNA_G
 ClientSampled :

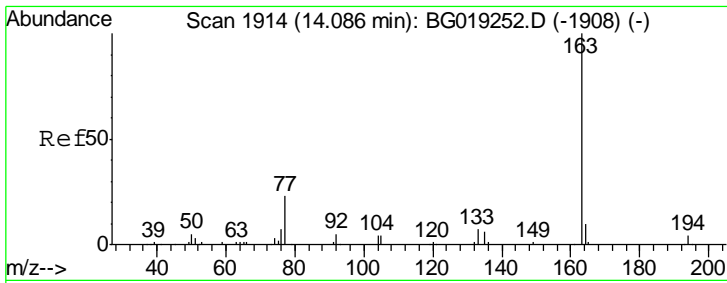
Tgt Ion	Resp	Lower	Upper
162	100		
164	33.0	25.8	38.8
127	41.9	29.0	43.4



#43
 2-Nitroaniline
 Concen: 19.89 ng/ul
 RT: 13.71 min Scan# 1850
 Delta R.T. -0.01 min
 Lab File: BG019259.D
 Acq: 20 Oct 2015 16:13

Tgt Ion	Resp	Lower	Upper
65	100		
92	62.0	50.7	76.1
138	81.9	74.9	112.3

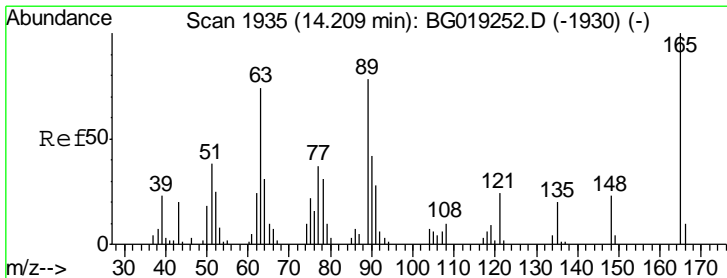
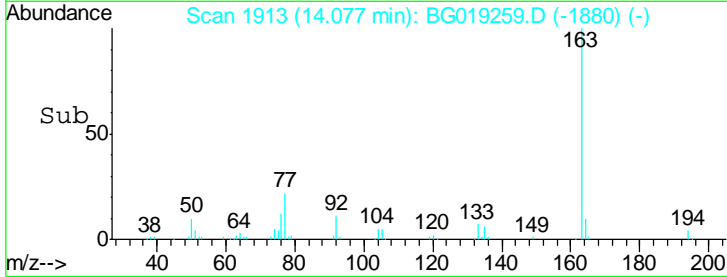
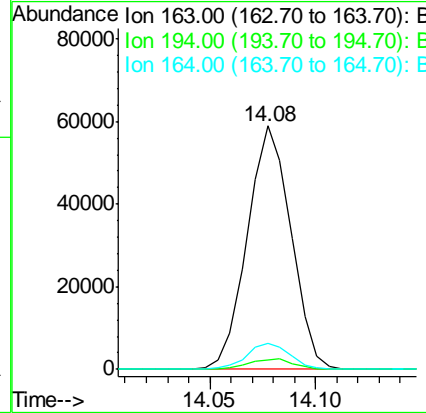
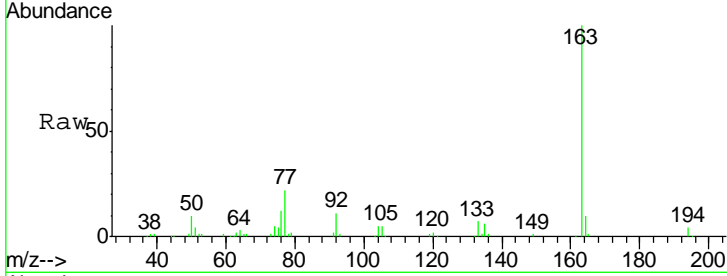




#45
 Dimethylphthalate
 Concen: 19.96 ng/ul
 RT: 14.08 min Scan# 1913
 Delta R.T. -0.01 min
 Lab File: BG019259.D
 Acq: 20 Oct 2015 16:13

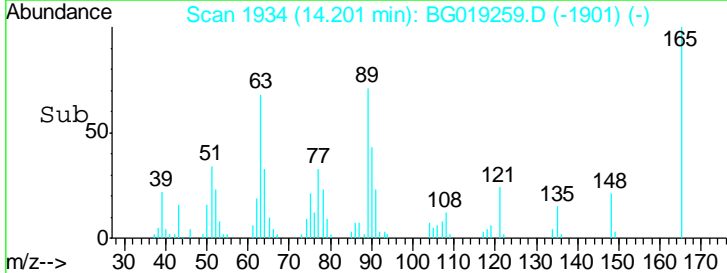
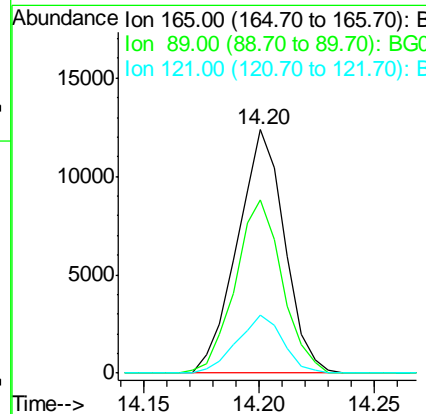
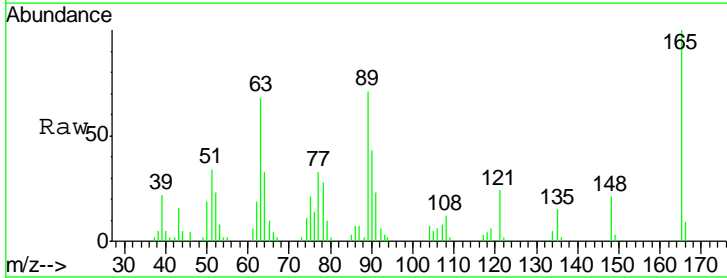
Instrument :
 BNA_G
 ClientSampled :

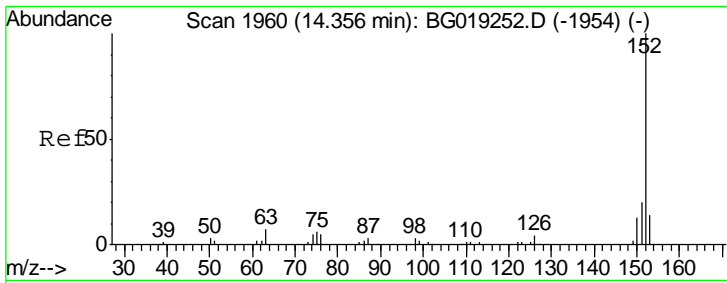
Tgt Ion	Resp	Lower	Upper
163	100		
194	3.6	3.3	4.9
164	10.5	8.1	12.1



#46
 2,6-Dinitrotoluene
 Concen: 21.78 ng/ul
 RT: 14.20 min Scan# 1934
 Delta R.T. -0.01 min
 Lab File: BG019259.D
 Acq: 20 Oct 2015 16:13

Tgt Ion	Resp	Lower	Upper
165	100		
89	71.4	45.5	68.3#
121	24.0	16.8	25.2

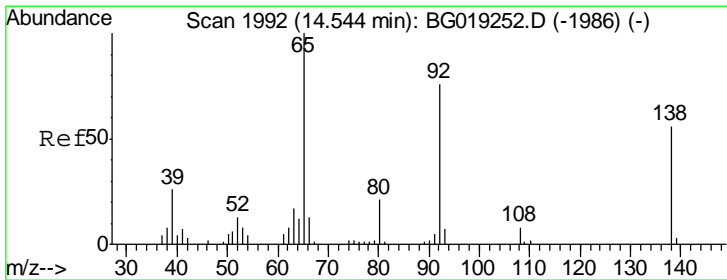
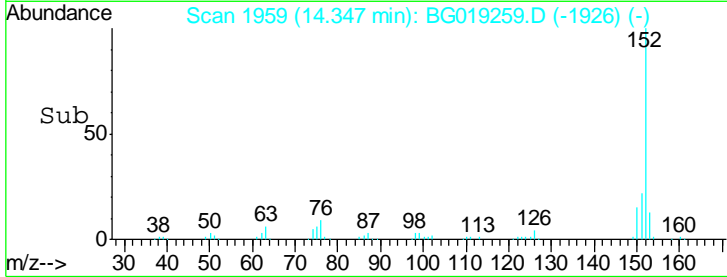
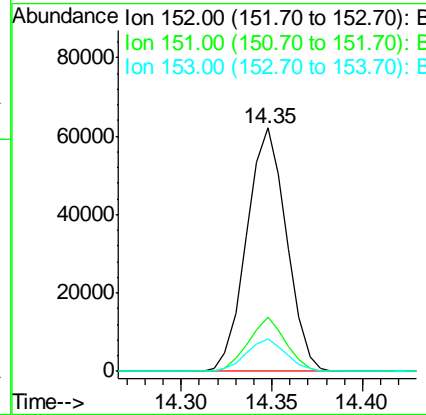
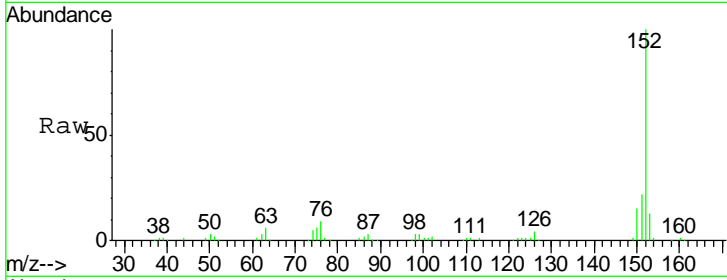




#48
 Acenaphthylene
 Concen: 19.05 ng/ul
 RT: 14.35 min Scan# 1959
 Delta R.T. -0.01 min
 Lab File: BG019259.D
 Acq: 20 Oct 2015 16:13

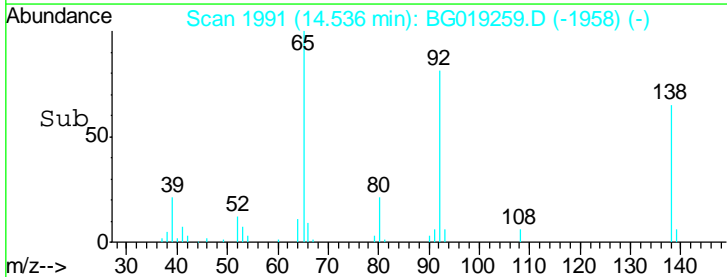
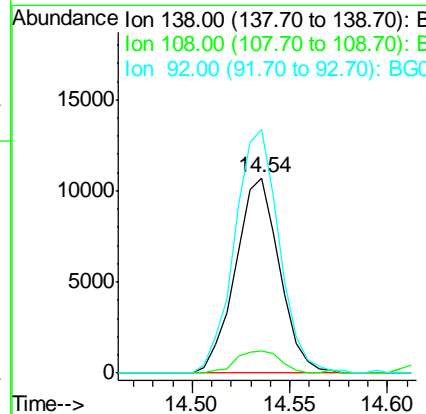
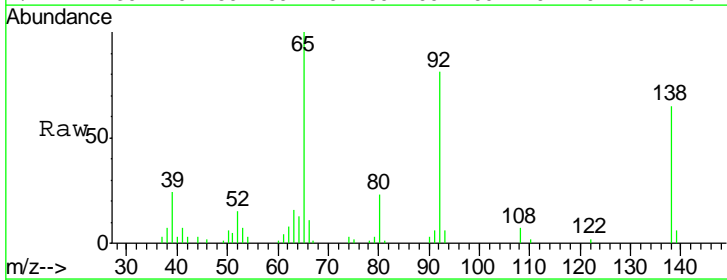
Instrument :
 BNA_G
 ClientSampled :

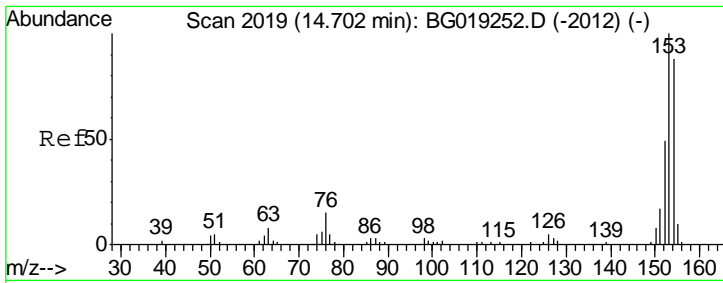
Tgt Ion	Resp	Lower	Upper
152	100		
151	22.3	16.6	25.0
153	13.4	10.5	15.7



#49
 3-Nitroaniline
 Concen: 21.63 ng/ul
 RT: 14.54 min Scan# 1991
 Delta R.T. -0.01 min
 Lab File: BG019259.D
 Acq: 20 Oct 2015 16:13

Tgt Ion	Resp	Lower	Upper
138	100		
108	11.4	8.9	13.3
92	124.6	92.4	138.6

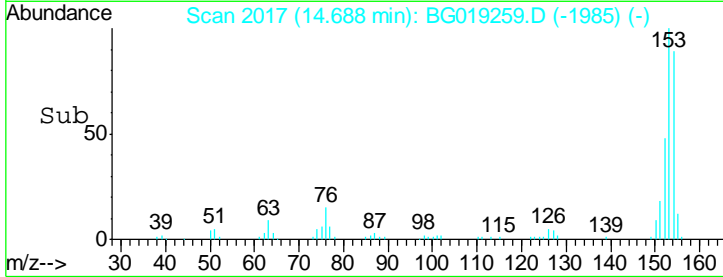
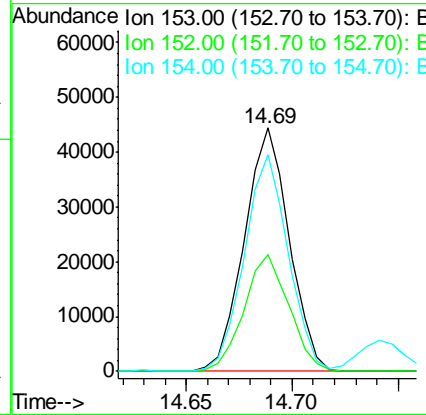
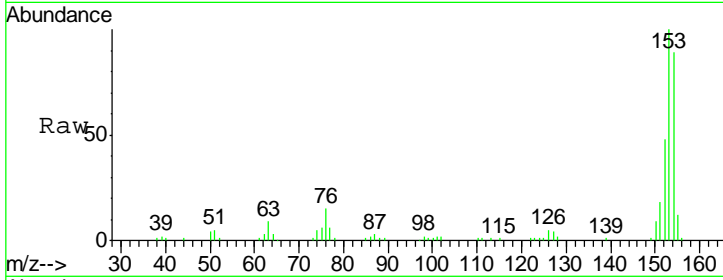




#50
 Acenaphthene
 Concen: 19.49 ng/ul
 RT: 14.69 min Scan# 2017
 Delta R.T. -0.01 min
 Lab File: BG019259.D
 Acq: 20 Oct 2015 16:13

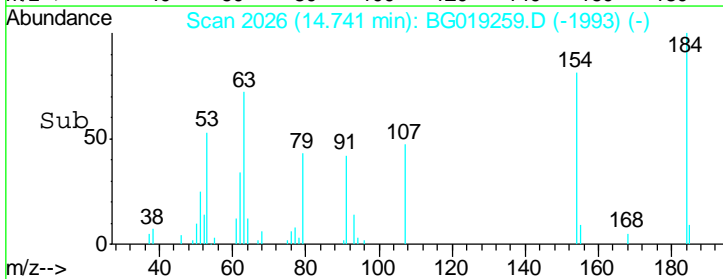
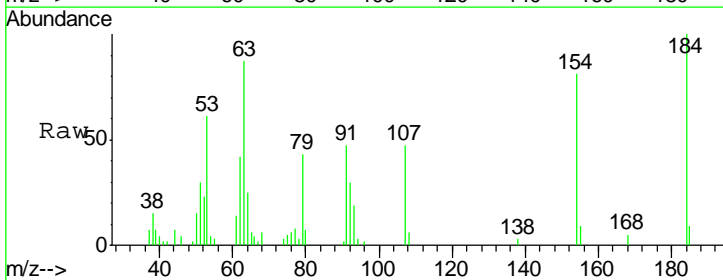
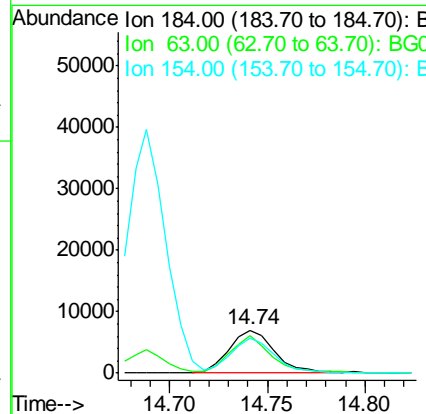
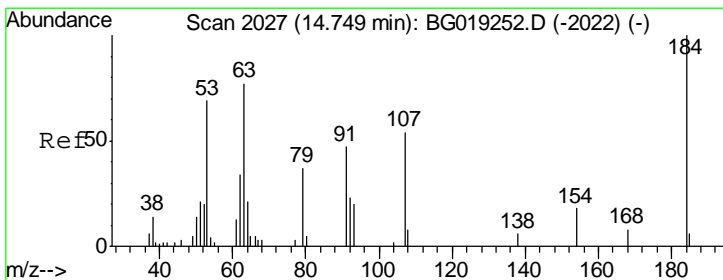
Instrument :
 BNA_G
 ClientSampled :

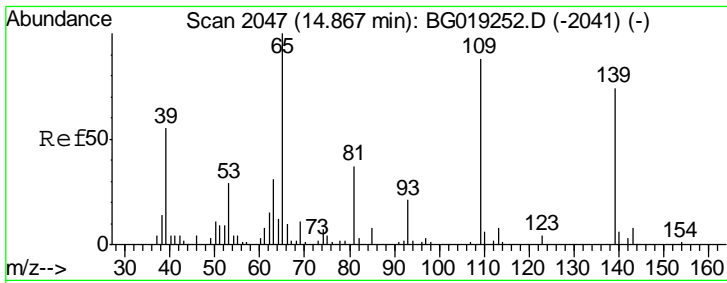
Tgt Ion	Resp	Lower	Upper
153	100		
152	47.9	36.2	54.2
154	89.2	67.5	101.3



#51
 2,4-Dinitrophenol
 Concen: 24.46 ng/ul
 RT: 14.74 min Scan# 2026
 Delta R.T. -0.01 min
 Lab File: BG019259.D
 Acq: 20 Oct 2015 16:13

Tgt Ion	Resp	Lower	Upper
184	100		
63	86.7	51.0	76.4#
154	80.8	56.5	84.7

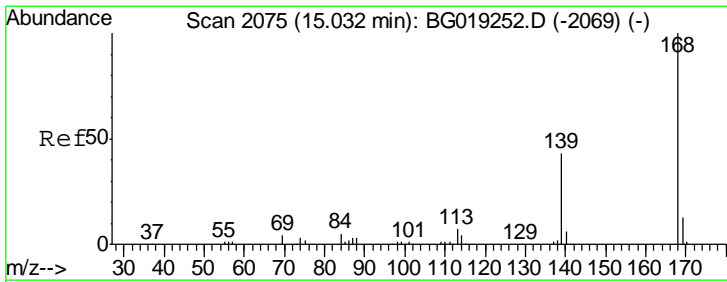
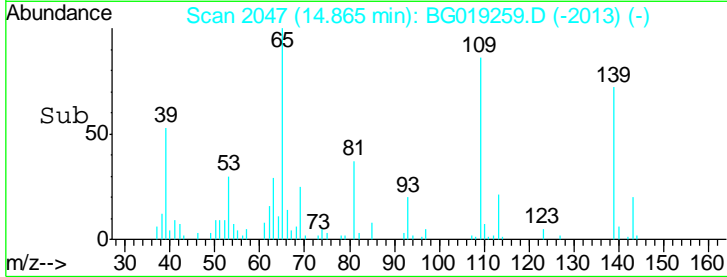
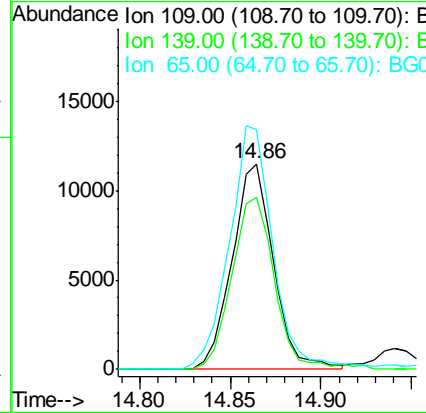
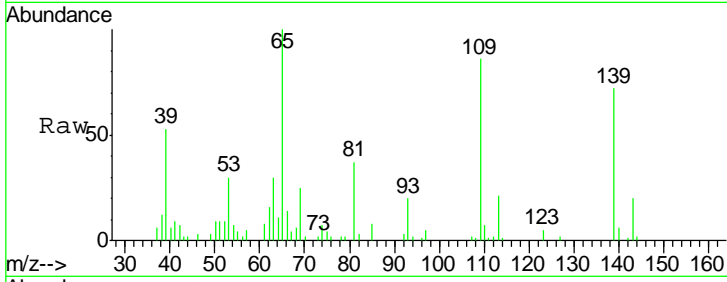




#53
 4-Nitrophenol
 Concen: 22.16 ng/ul
 RT: 14.86 min Scan# 2047
 Delta R.T. -0.00 min
 Lab File: BG019259.D
 Acq: 20 Oct 2015 16:13

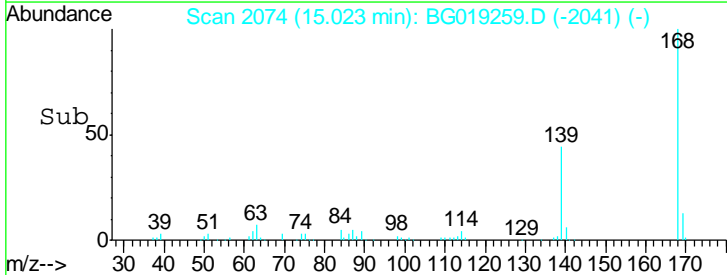
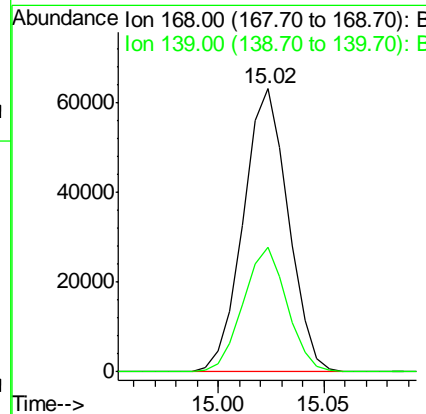
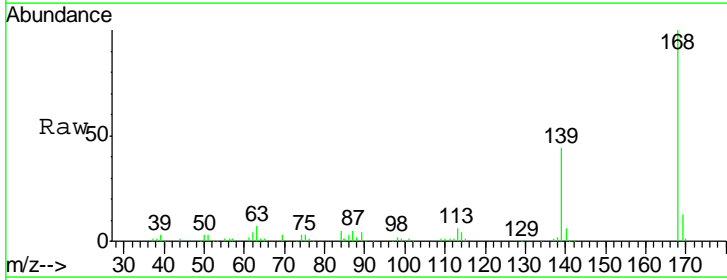
Instrument :
 BNA_G
 ClientSampled :

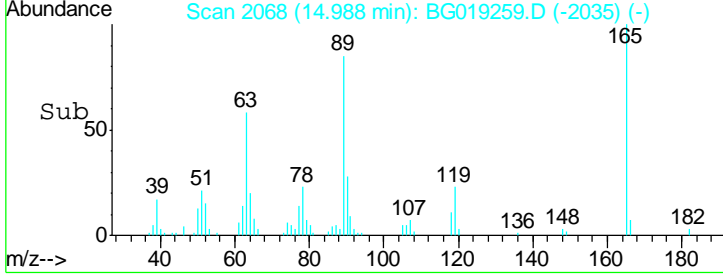
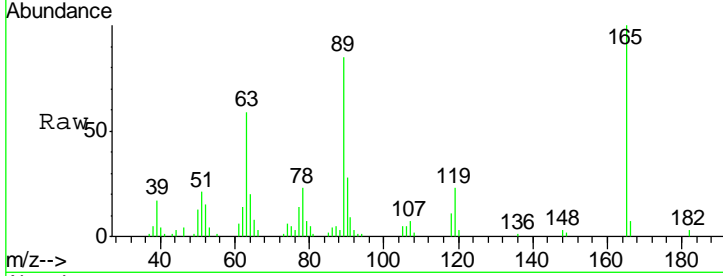
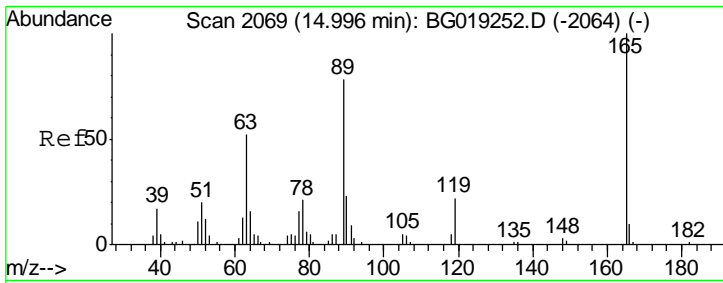
Tgt Ion	Resp	Lower	Upper
109	18295		
139	83.6	97.9	146.9#
65	116.5	117.4	176.0#



#54
 Dibenzofuran
 Concen: 19.67 ng/ul
 RT: 15.02 min Scan# 2074
 Delta R.T. -0.01 min
 Lab File: BG019259.D
 Acq: 20 Oct 2015 16:13

Tgt Ion	Resp	Lower	Upper
168	93237		
139	44.2	28.5	42.7#

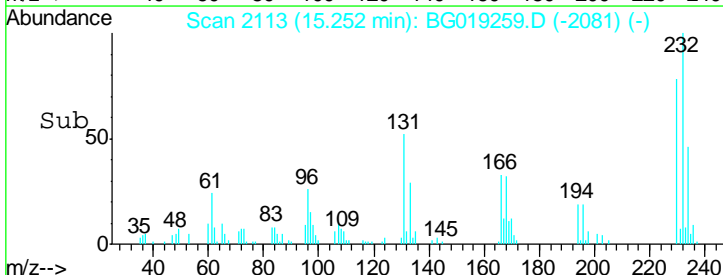
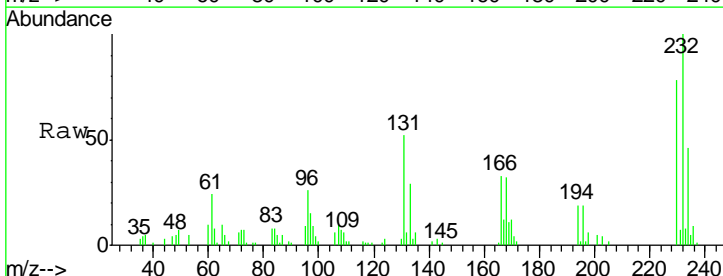
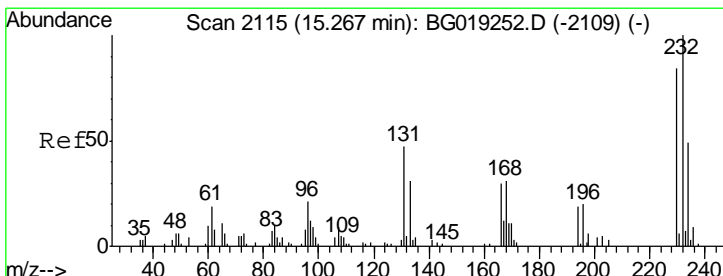
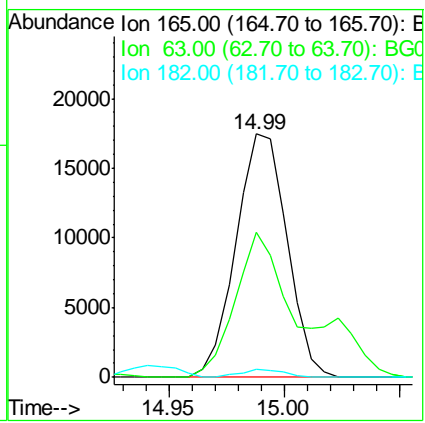




#55
 2,4-Dinitrotoluene
 Concen: 20.55 ng/ul
 RT: 14.99 min Scan# 2068
 Delta R.T. -0.01 min
 Lab File: BG019259.D
 Acq: 20 Oct 2015 16:13

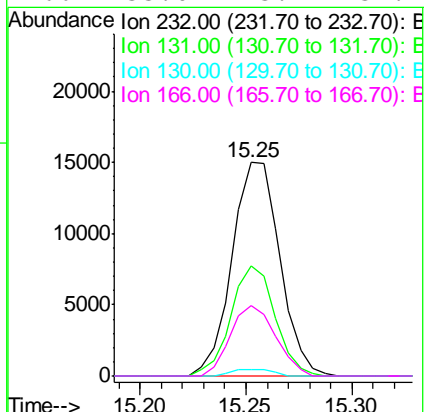
Instrument :
 BNA_G
 ClientSampled :

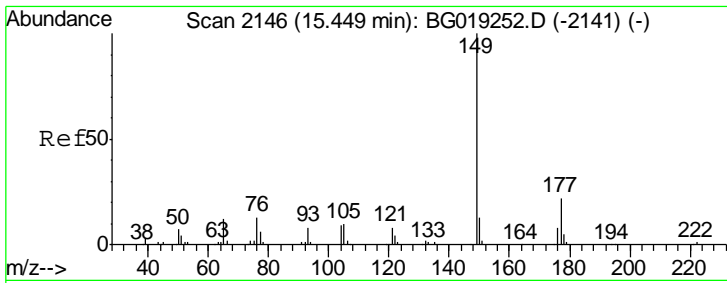
Tgt Ion	Resp	Lower	Upper
165	26911		
63	59.4	39.5	59.3#
182	3.1	2.2	3.2



#56
 2,3,4,6-Tetrachlorophenol
 Concen: 23.25 ng/ul
 RT: 15.25 min Scan# 2113
 Delta R.T. -0.01 min
 Lab File: BG019259.D
 Acq: 20 Oct 2015 16:13

Tgt Ion	Resp	Lower	Upper
232	23537		
131	51.7	32.6	49.0#
130	3.3	2.2	3.4
166	33.0	23.1	34.7



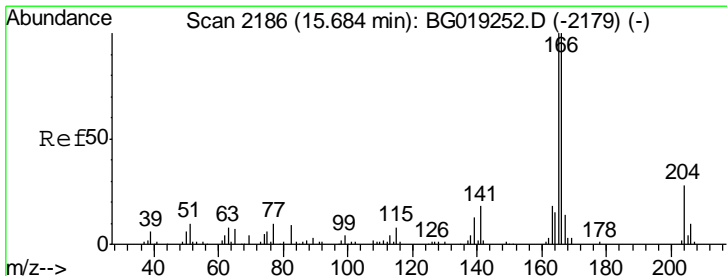
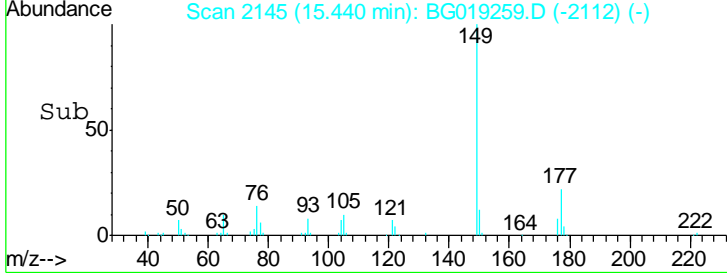
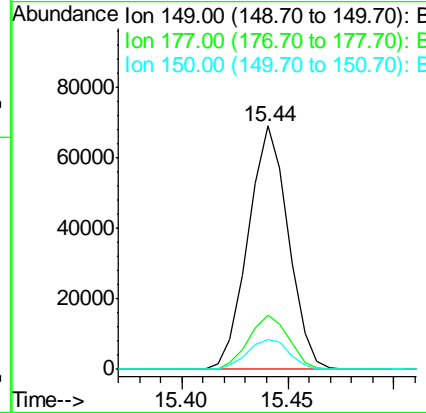
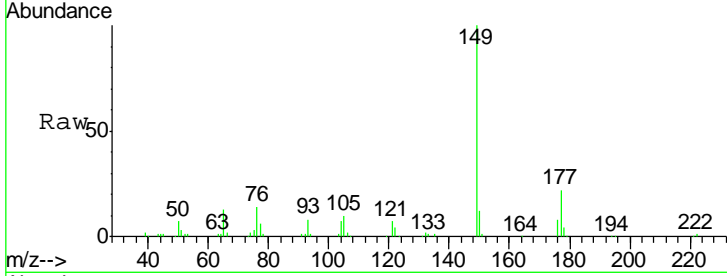


#57
 Diethylphthalate
 Concen: 20.78 ng/ul
 RT: 15.44 min Scan# 2145
 Delta R.T. -0.01 min
 Lab File: BG019259.D
 Acq: 20 Oct 2015 16:13

Instrument :
 BNA_G
 ClientSampled :

Tgt Ion:149 Resp: 91287

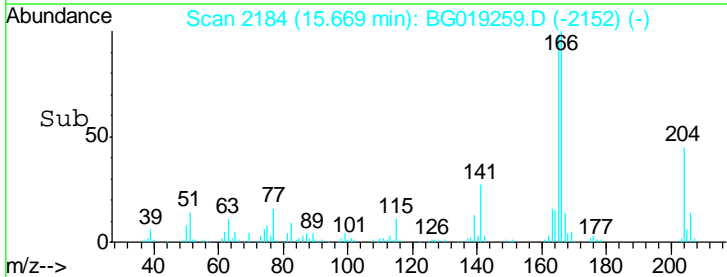
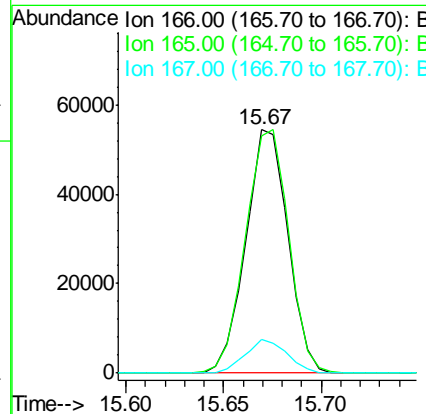
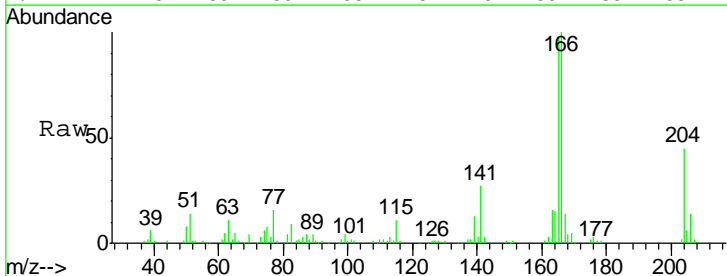
Ion	Ratio	Lower	Upper
149	100		
177	22.1	17.4	26.0
150	12.2	10.0	15.0

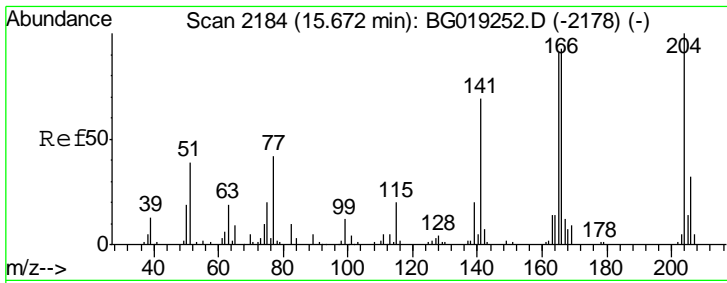


#59
 Fluorene
 Concen: 20.08 ng/ul
 RT: 15.67 min Scan# 2184
 Delta R.T. -0.01 min
 Lab File: BG019259.D
 Acq: 20 Oct 2015 16:13

Tgt Ion:166 Resp: 81451

Ion	Ratio	Lower	Upper
166	100		
165	97.6	77.7	116.5
167	13.6	10.4	15.6

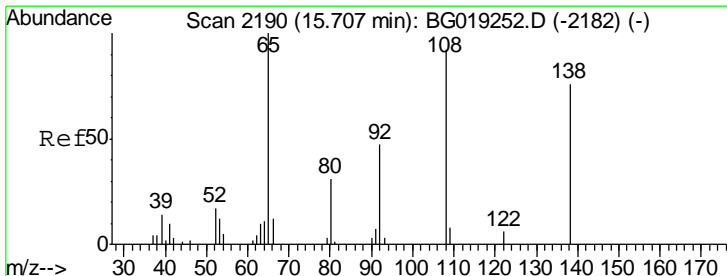
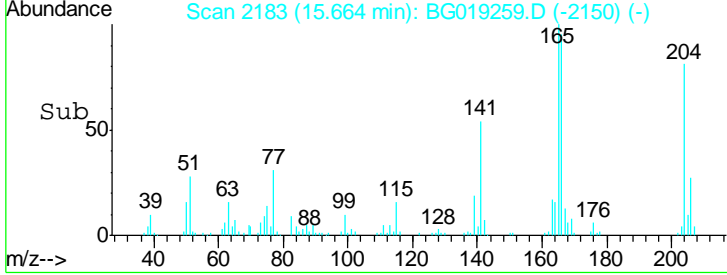
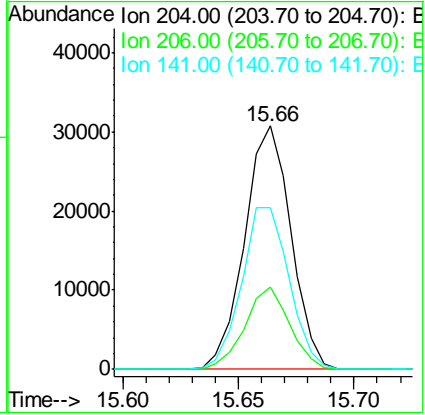
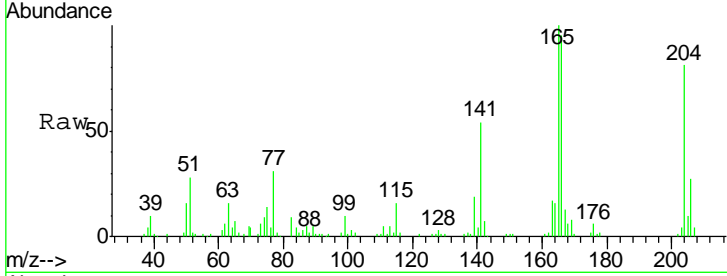




#60
 4-Chlorophenyl-phenylether
 Concen: 20.60 ng/ul
 RT: 15.66 min Scan# 2183
 Delta R.T. -0.01 min
 Lab File: BG019259.D
 Acq: 20 Oct 2015 16:13

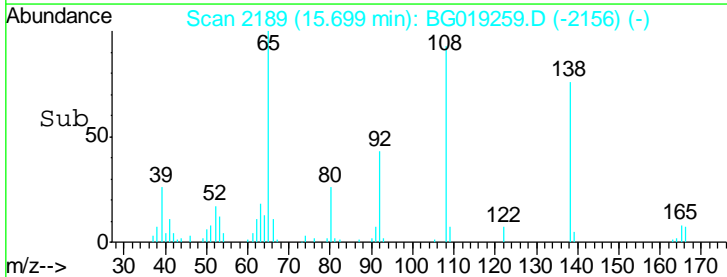
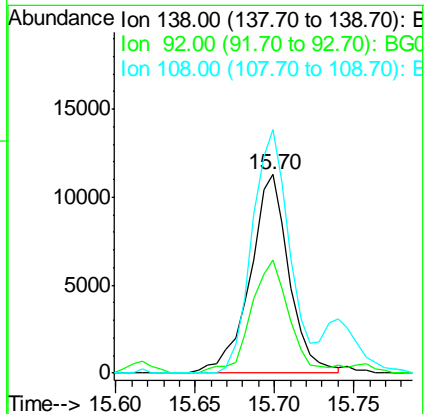
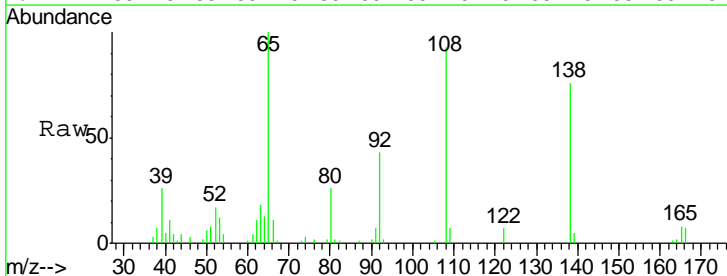
Instrument :
 BNA_G
 ClientSampled :

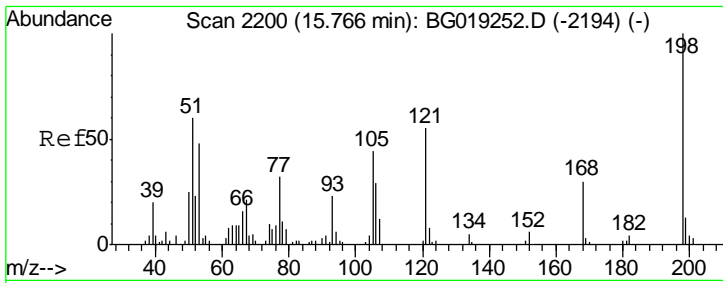
Tgt Ion	Resp	Lower	Upper
204	43090		
206	34.0	26.4	39.6
141	66.2	44.4	66.6



#61
 4-Nitroaniline
 Concen: 21.09 ng/ul
 RT: 15.70 min Scan# 2189
 Delta R.T. -0.01 min
 Lab File: BG019259.D
 Acq: 20 Oct 2015 16:13

Tgt Ion	Resp	Lower	Upper
138	19326		
92	57.2	47.4	71.2
108	122.7	62.8	94.2#

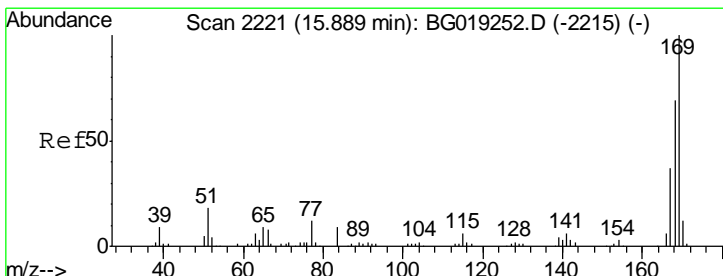
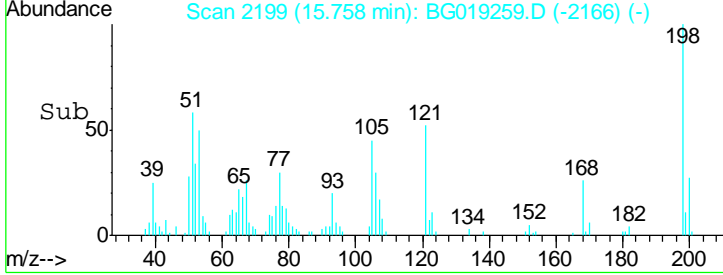
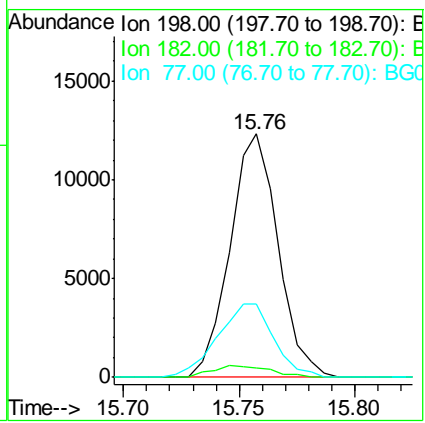
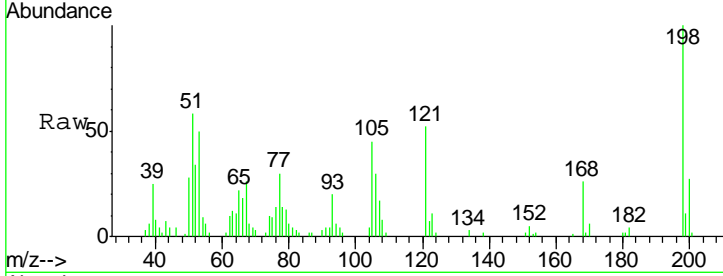




#64
 4,6-Dinitro-2-methylphenol
 Concen: 22.60 ng/ul
 RT: 15.76 min Scan# 2199
 Delta R.T. -0.01 min
 Lab File: BG019259.D
 Acq: 20 Oct 2015 16:13

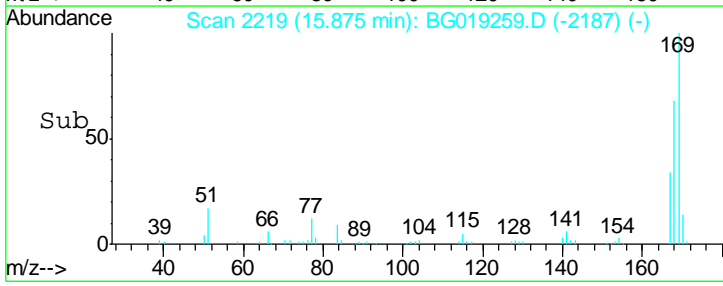
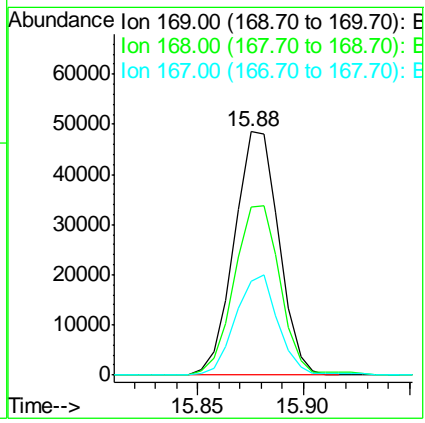
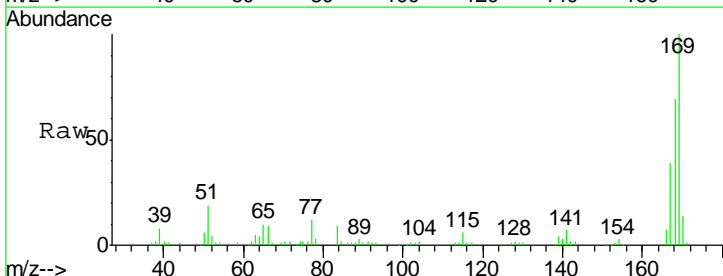
Instrument :
 BNA_G
 ClientSampled :

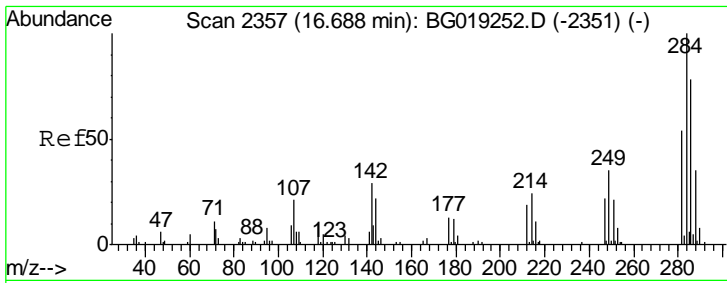
Tgt Ion	Resp	Lower	Upper
198	17813		
182	4.1	4.3	6.5#
77	30.1	20.2	30.2



#65
 N-Nitrosodiphenylamine
 Concen: 20.38 ng/ul
 RT: 15.88 min Scan# 2219
 Delta R.T. -0.01 min
 Lab File: BG019259.D
 Acq: 20 Oct 2015 16:13

Tgt Ion	Resp	Lower	Upper
169	70846		
168	68.9	58.2	87.4
167	38.7	30.9	46.3

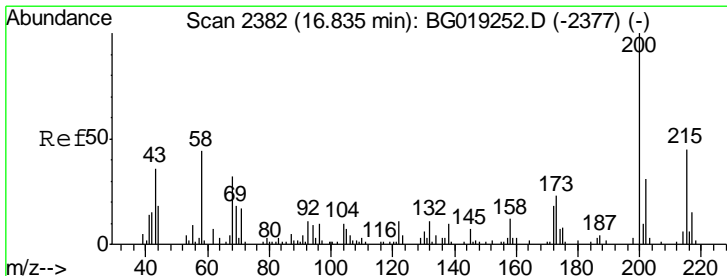
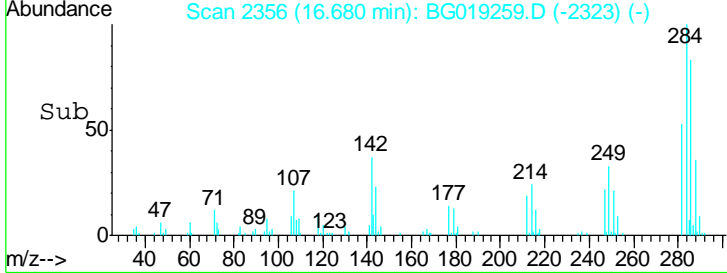
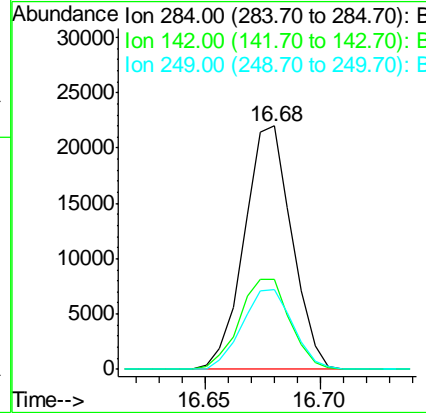
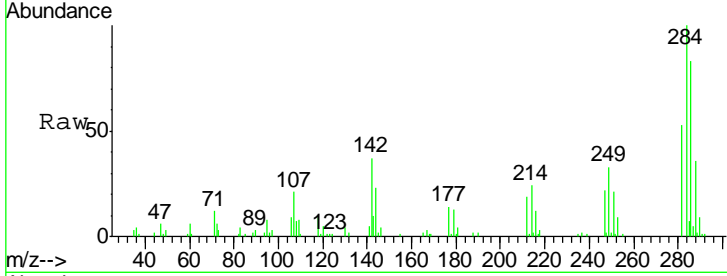




#67
 Hexachlorobenzene
 Concen: 19.03 ng/ul
 RT: 16.68 min Scan# 2356
 Delta R.T. -0.01 min
 Lab File: BG019259.D
 Acq: 20 Oct 2015 16:13

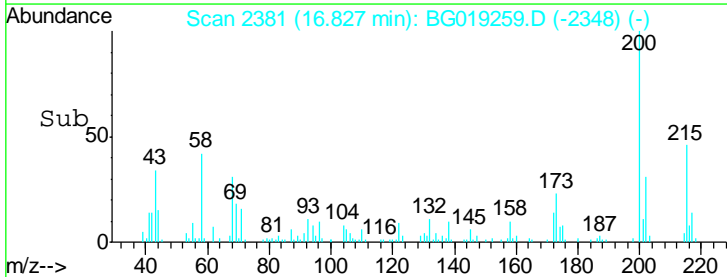
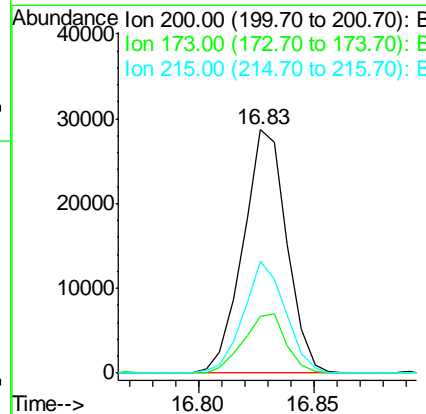
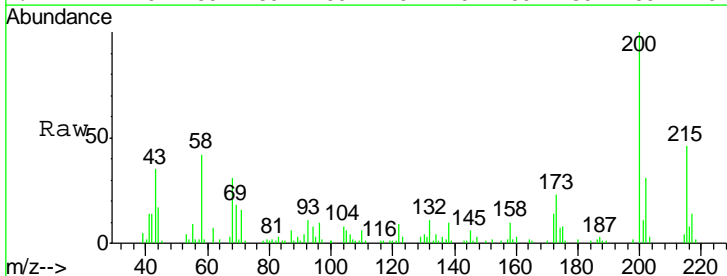
Instrument :
 BNA_G
 ClientSampled :

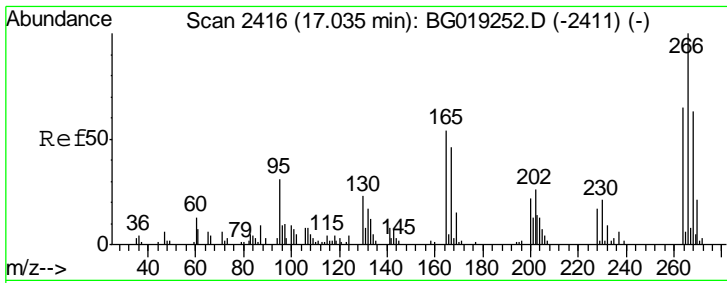
Tgt Ion	Resp	Lower	Upper
284	31540		
142	36.8	25.4	38.0
249	33.0	25.6	38.4



#68
 Atrazine
 Concen: 22.69 ng/ul
 RT: 16.83 min Scan# 2381
 Delta R.T. -0.01 min
 Lab File: BG019259.D
 Acq: 20 Oct 2015 16:13

Tgt Ion	Resp	Lower	Upper
200	37916		
173	23.2	18.5	27.7
215	45.9	35.9	53.9

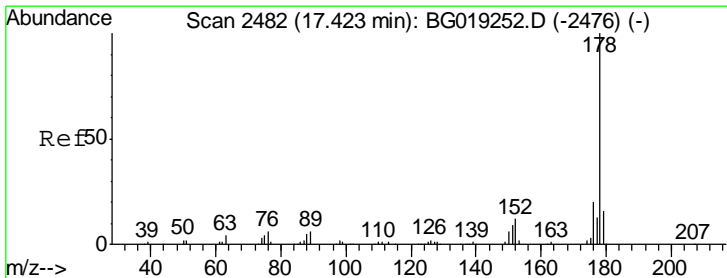
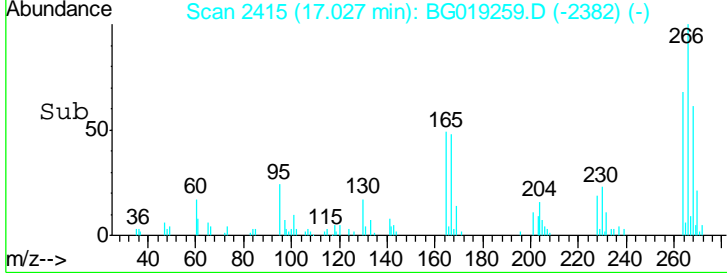
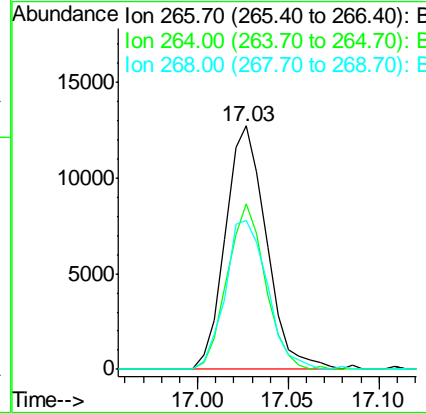
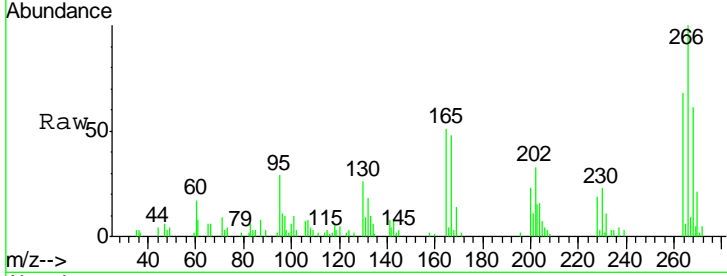




#69
 Pentachlorophenol
 Concen: 23.48 ng/ul
 RT: 17.03 min Scan# 2415
 Delta R.T. -0.01 min
 Lab File: BG019259.D
 Acq: 20 Oct 2015 16:13

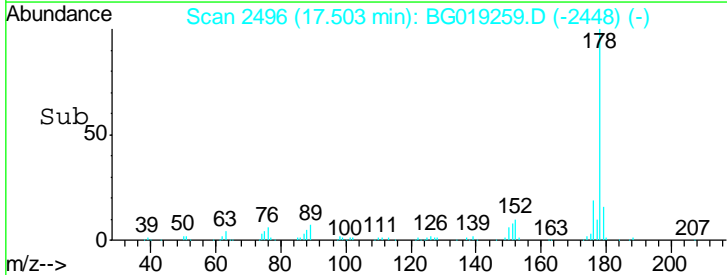
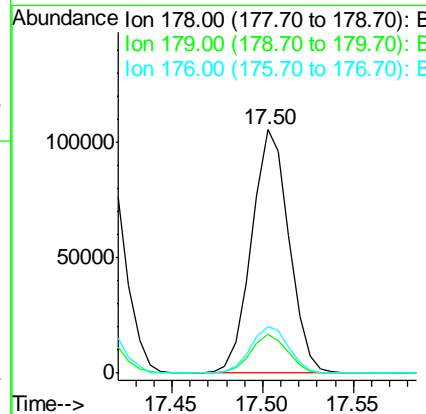
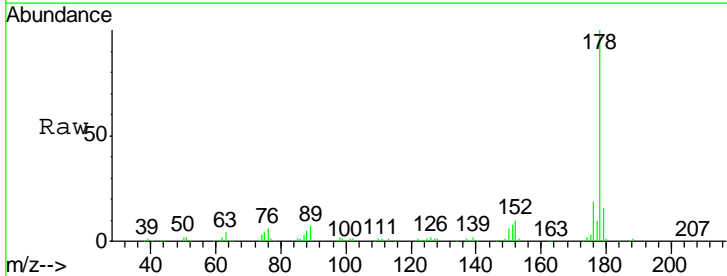
Instrument :
 BNA_G
 ClientSampled :

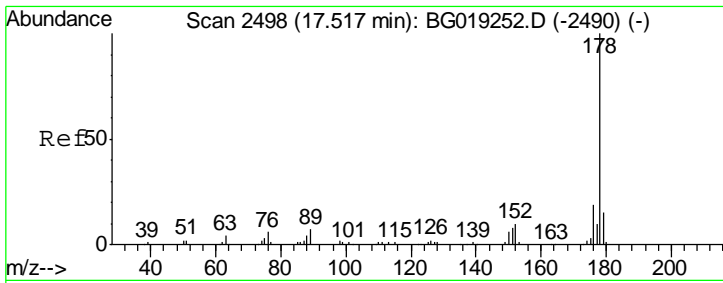
Tgt Ion	Resp	Lower	Upper
266	19995		
266	100		
264	68.0	49.0	73.6
268	61.3	55.6	83.4



#70
 Phenanthrene
 Concen: 21.48 ng/ul
 RT: 17.50 min Scan# 2496
 Delta R.T. 0.08 min
 Lab File: BG019259.D
 Acq: 20 Oct 2015 16:13

Tgt Ion	Resp	Lower	Upper
178	151741		
178	100		
179	16.0	12.5	18.7
176	19.2	15.4	23.0

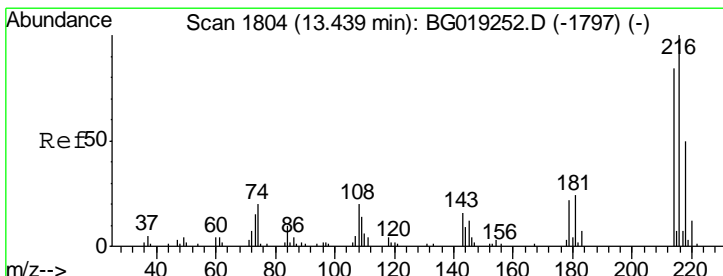
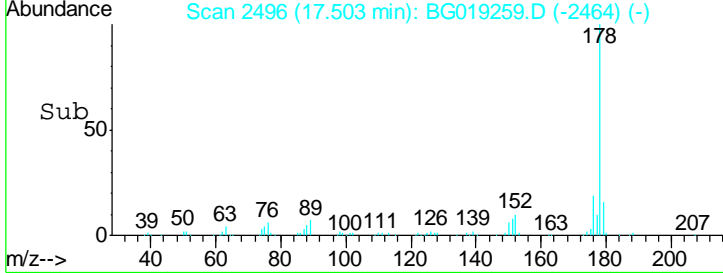
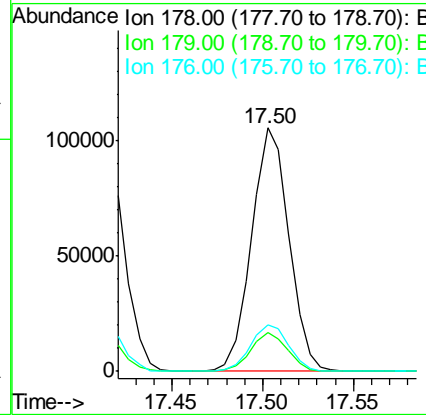
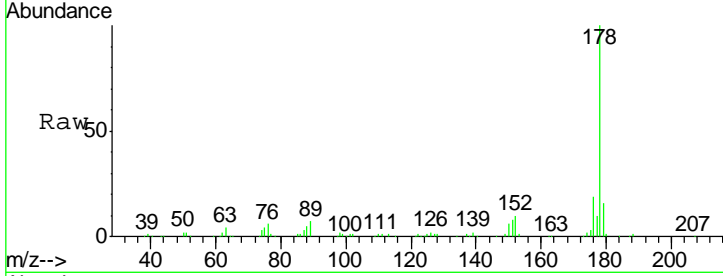




#72
 Anthracene
 Concen: 21.15 ng/uL
 RT: 17.50 min Scan# 2496
 Delta R.T. -0.01 min
 Lab File: BG019259.D
 Acq: 20 Oct 2015 16:13

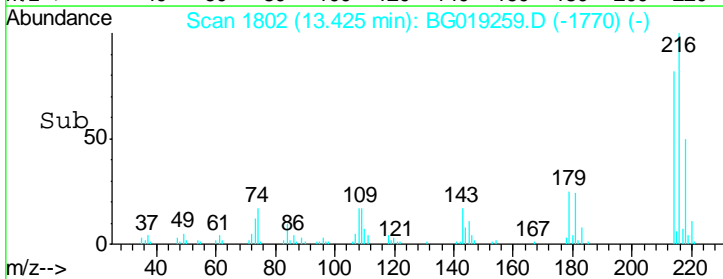
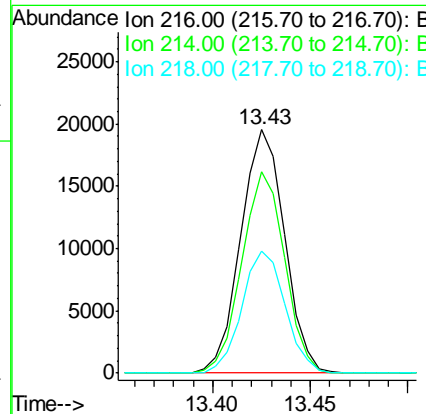
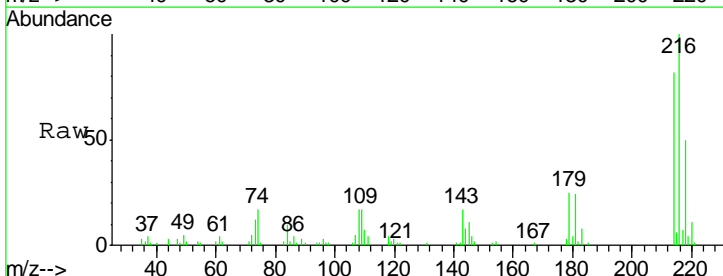
Instrument :
 BNA_G
 ClientSampled :

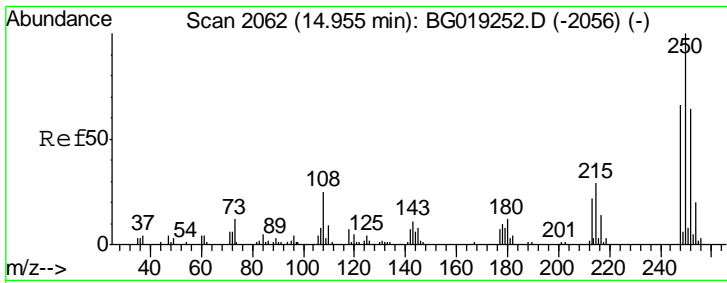
Tgt Ion	Resp	Lower	Upper
178	100		
179	16.0	12.2	18.4
176	19.2	15.0	22.6



#73
 1,2,3,4-Tetrachlorobenzene
 Concen: 19.74 ng/uL
 RT: 13.43 min Scan# 1802
 Delta R.T. -0.01 min
 Lab File: BG019259.D
 Acq: 20 Oct 2015 16:13

Tgt Ion	Resp	Lower	Upper
216	100		
214	82.5	64.5	96.7
218	50.4	40.4	60.6

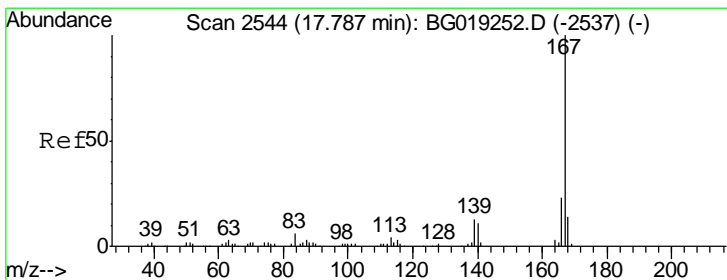
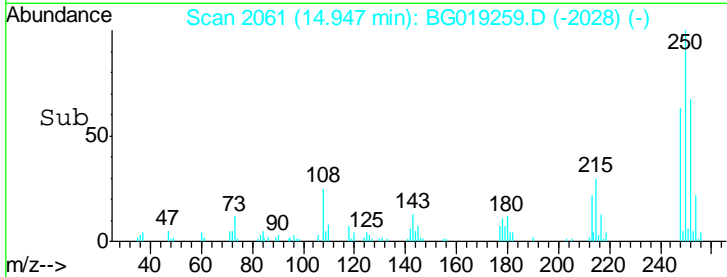
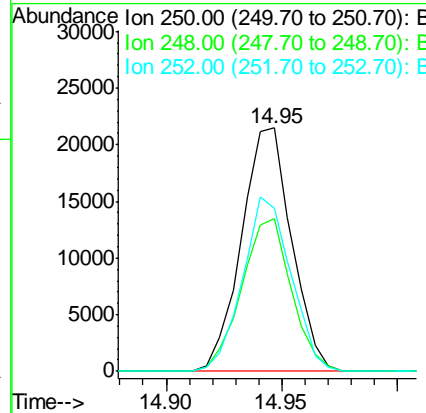
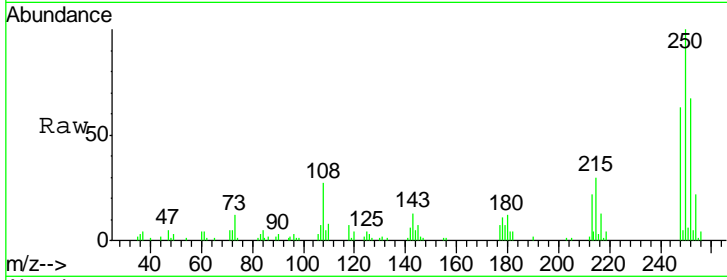




#74
 Pentachlorobenzene
 Concen: 19.29 ng/uL
 RT: 14.95 min Scan# 2061
 Delta R.T. -0.01 min
 Lab File: BG019259.D
 Acq: 20 Oct 2015 16:13

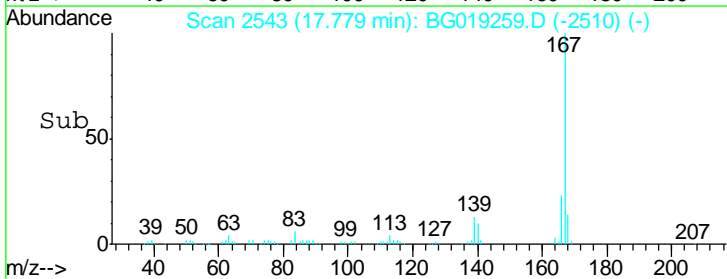
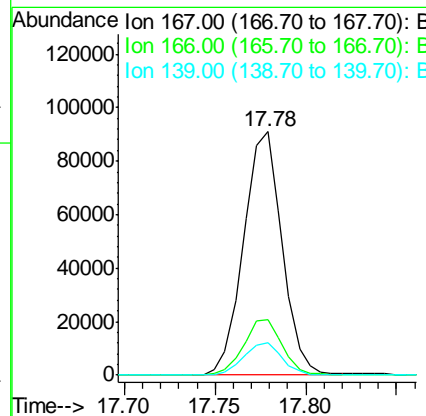
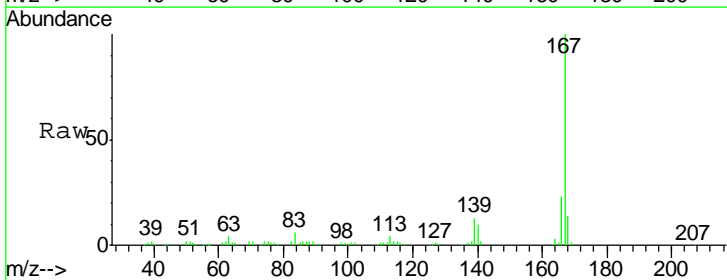
Instrument :
 BNA_G
 ClientSampled :

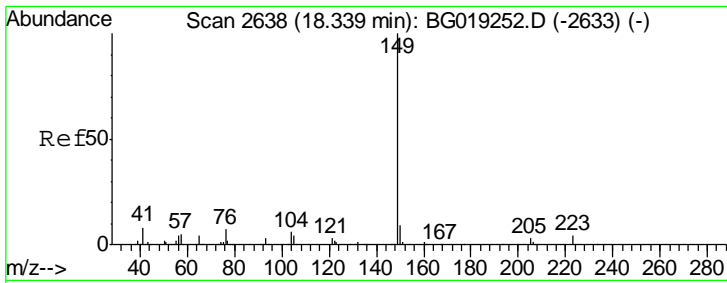
Tgt Ion	Resp	Lower	Upper
250	32552		
248	62.9	47.4	71.2
252	67.0	50.2	75.4



#75
 Carbazole
 Concen: 21.68 ng/uL
 RT: 17.78 min Scan# 2543
 Delta R.T. -0.01 min
 Lab File: BG019259.D
 Acq: 20 Oct 2015 16:13

Tgt Ion	Resp	Lower	Upper
167	134112		
166	22.9	18.6	27.8
139	13.1	9.8	14.8

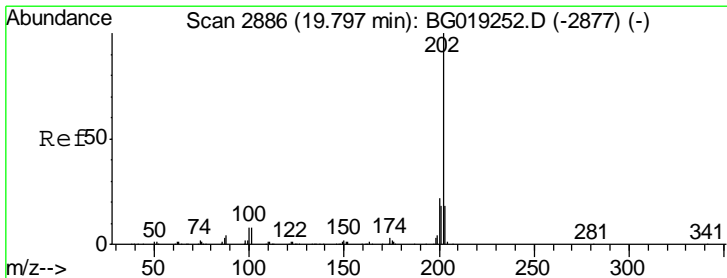
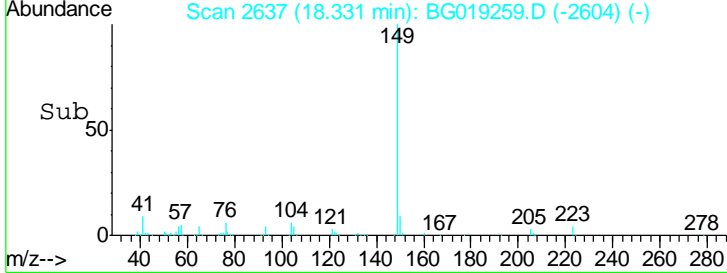
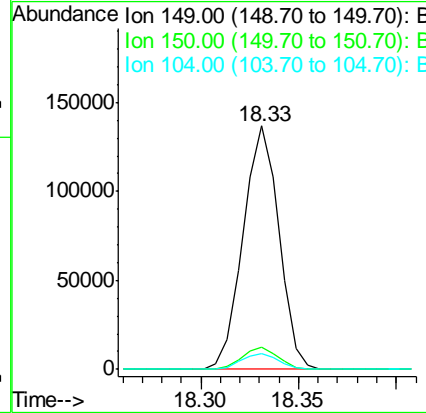
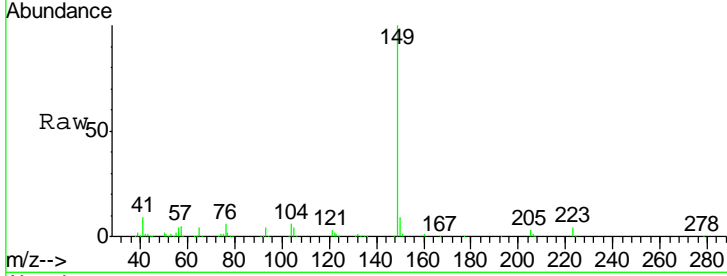




#76
 Di-n-butylphthalate
 Concen: 21.34 ng/ul
 RT: 18.33 min Scan# 2637
 Delta R.T. -0.01 min
 Lab File: BG019259.D
 Acq: 20 Oct 2015 16:13

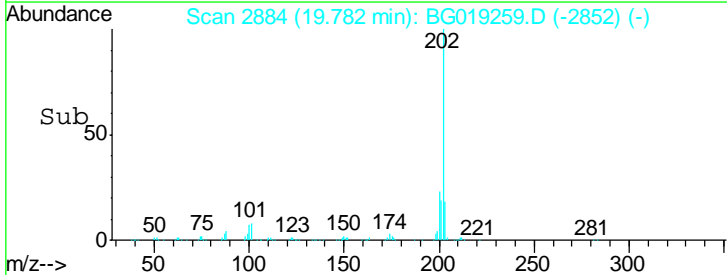
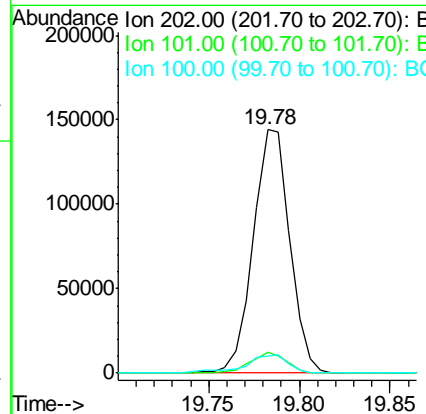
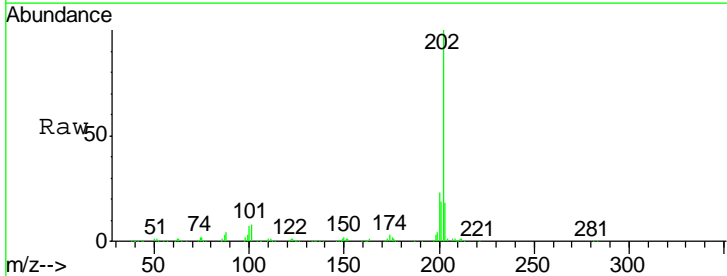
Instrument :
 BNA_G
 ClientSampled :

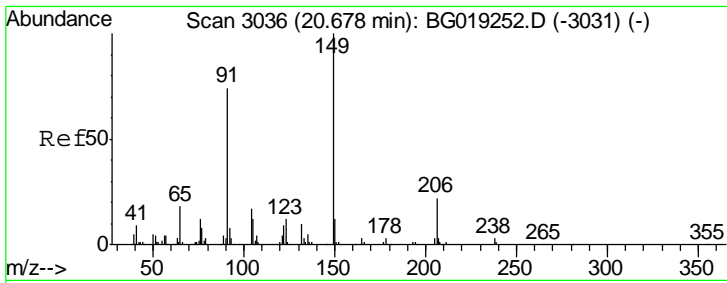
Tgt Ion	Resp	Lower	Upper
149	173770		
150	9.3	7.1	10.7
104	6.4	3.9	5.9#



#80
 Pyrene
 Concen: 20.83 ng/ul
 RT: 19.78 min Scan# 2884
 Delta R.T. -0.01 min
 Lab File: BG019259.D
 Acq: 20 Oct 2015 16:13

Tgt Ion	Resp	Lower	Upper
202	202016		
101	8.5	10.2	15.2#
100	7.2	8.5	12.7#

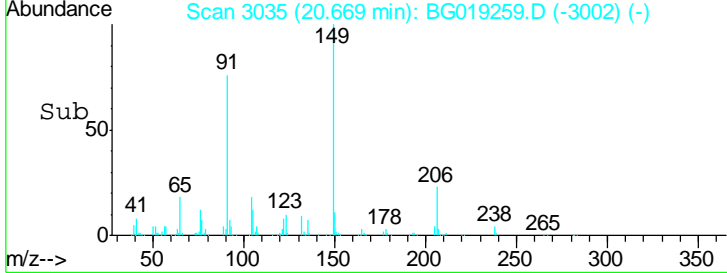
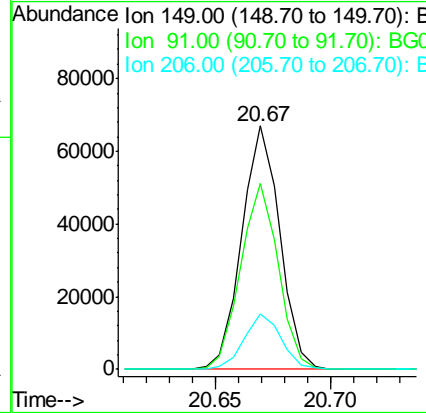
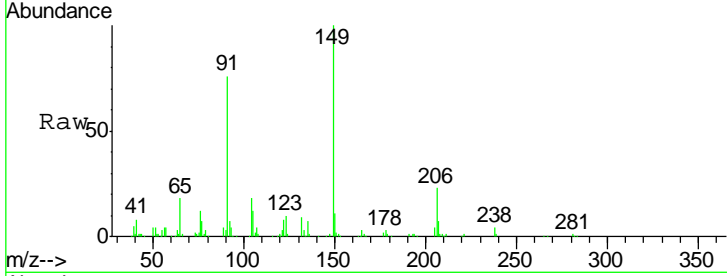




#81
 Butylbenzylphthalate
 Concen: 21.81 ng/ul
 RT: 20.67 min Scan# 3035
 Delta R.T. -0.01 min
 Lab File: BG019259.D
 Acq: 20 Oct 2015 16:13

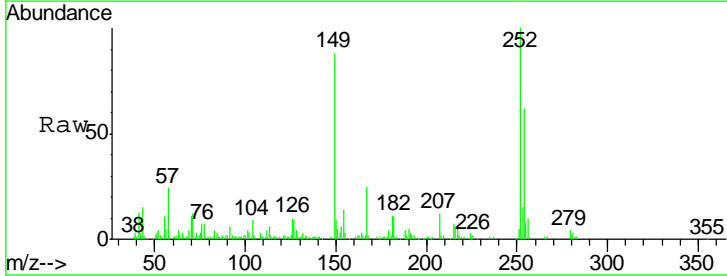
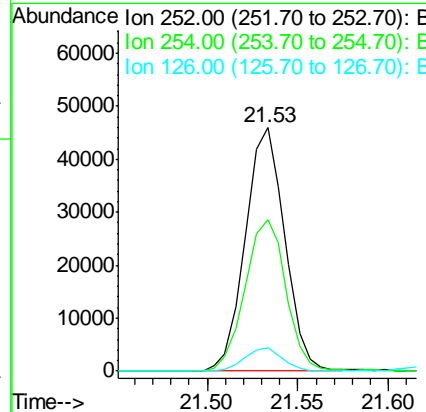
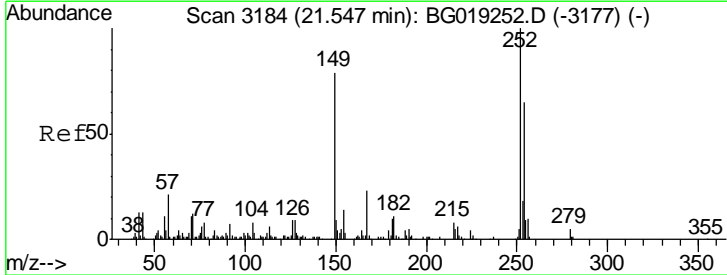
Instrument :
 BNA_G
 ClientSampled :

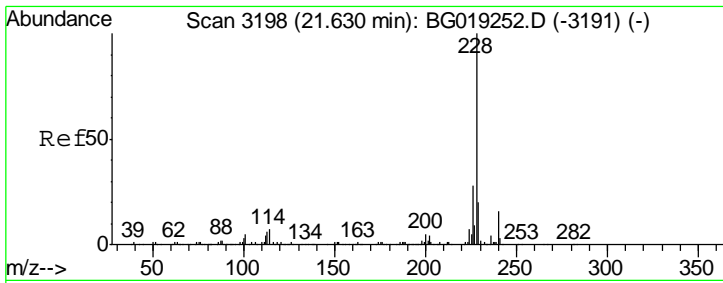
Tgt Ion	Resp	Lower	Upper
149	100		
91	76.2	59.1	88.7
206	22.6	17.9	26.9



#82
 3,3'-Dichlorobenzidine
 Concen: 23.28 ng/ul
 RT: 21.53 min Scan# 3182
 Delta R.T. -0.01 min
 Lab File: BG019259.D
 Acq: 20 Oct 2015 16:13

Tgt Ion	Resp	Lower	Upper
252	100		
254	62.3	51.4	77.0
126	9.9	7.9	11.9

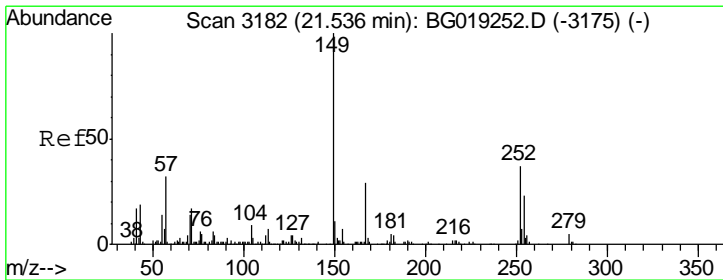
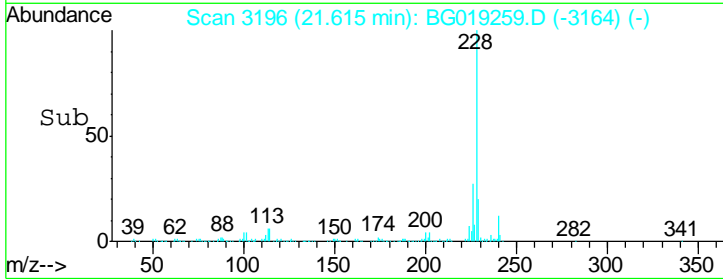
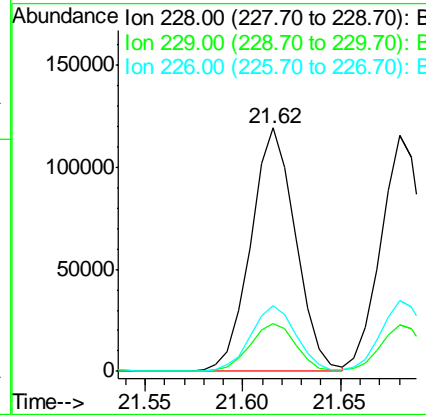
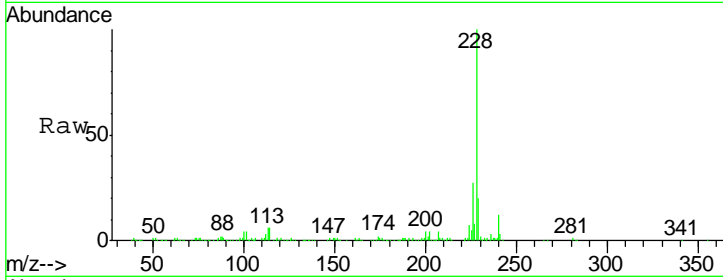




#83
 Benzo(a)anthracene
 Concen: 20.51 ng/ul
 RT: 21.62 min Scan# 3196
 Delta R.T. -0.01 min
 Lab File: BG019259.D
 Acq: 20 Oct 2015 16:13

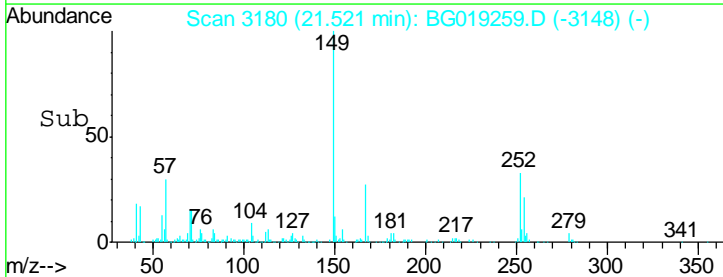
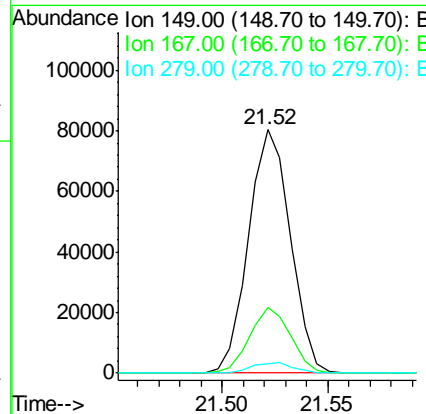
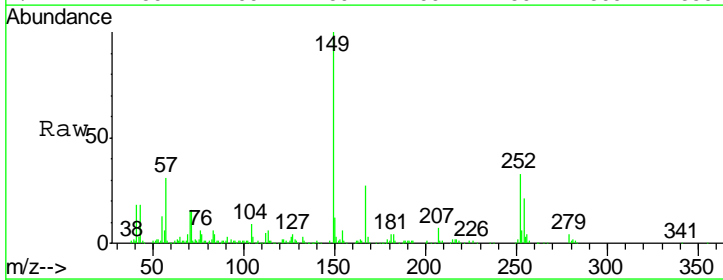
Instrument :
 BNA_G
 ClientSampled :

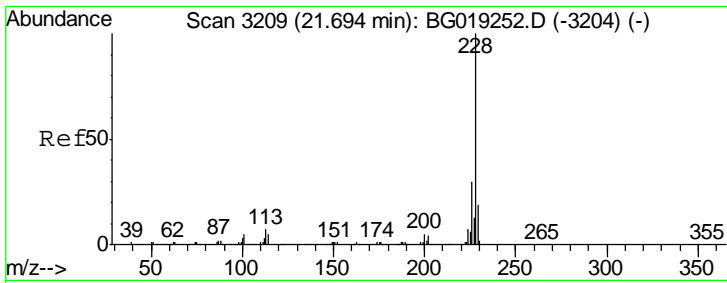
Tgt Ion	Resp	Lower	Upper
228	189291		
229	19.6	16.6	24.8
226	26.8	22.8	34.2



#84
 Bis(2-ethylhexyl)phthalate
 Concen: 22.67 ng/ul
 RT: 21.52 min Scan# 3180
 Delta R.T. -0.01 min
 Lab File: BG019259.D
 Acq: 20 Oct 2015 16:13

Tgt Ion	Resp	Lower	Upper
149	110481		
167	27.1	22.8	34.2
279	3.9	3.3	4.9

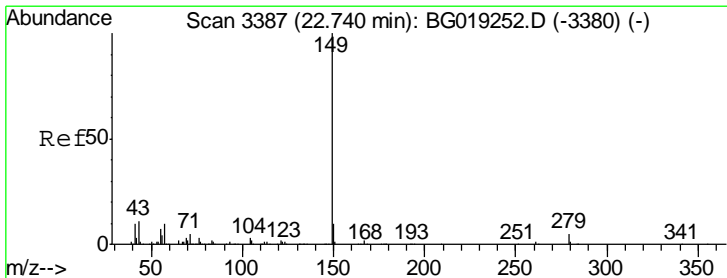
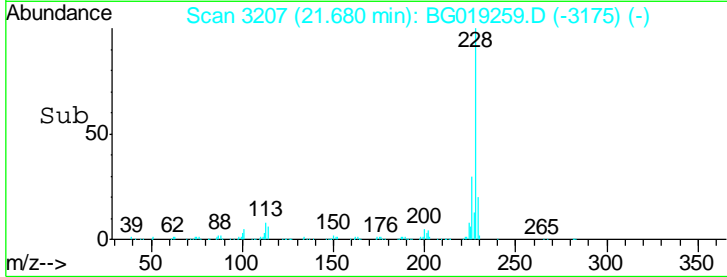
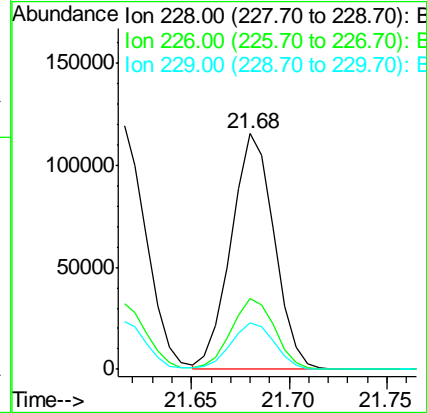
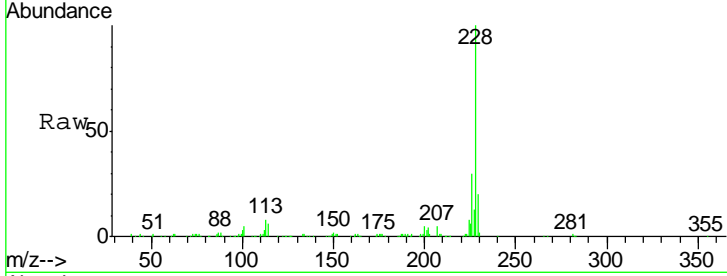




#85
 Chrysene
 Concen: 20.13 ng/ul
 RT: 21.68 min Scan# 3207
 Delta R.T. -0.01 min
 Lab File: BG019259.D
 Acq: 20 Oct 2015 16:13

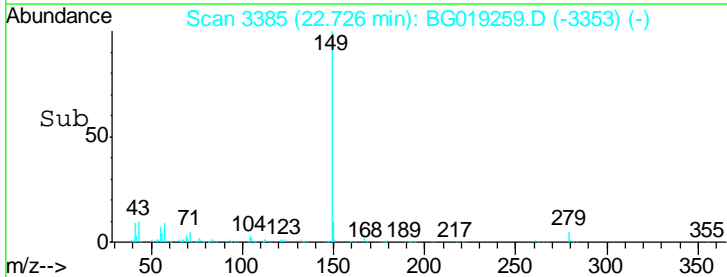
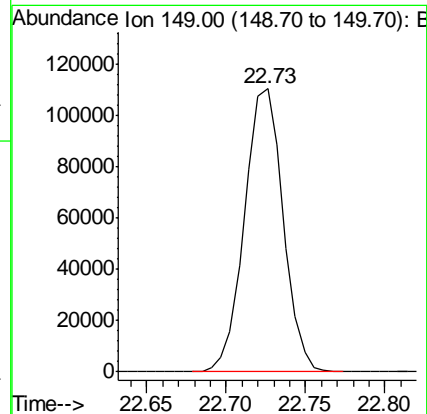
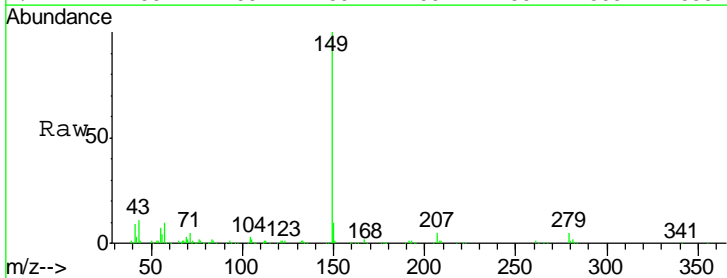
Instrument :
 BNA_G
 ClientSampled :

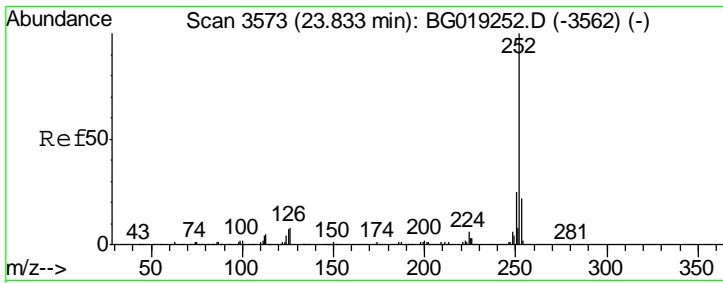
Tgt Ion	Resp	Lower	Upper
228	175764		
226	30.0	24.2	36.2
229	19.5	15.6	23.4



#87
 Di-n-octyl phthalate
 Concen: 21.74 ng/ul
 RT: 22.73 min Scan# 3385
 Delta R.T. -0.01 min
 Lab File: BG019259.D
 Acq: 20 Oct 2015 16:13

Tgt Ion:149 Resp: 187481

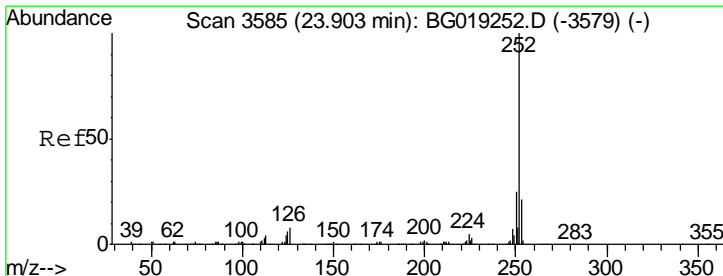
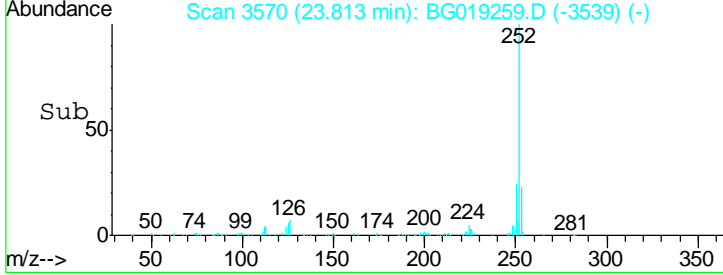
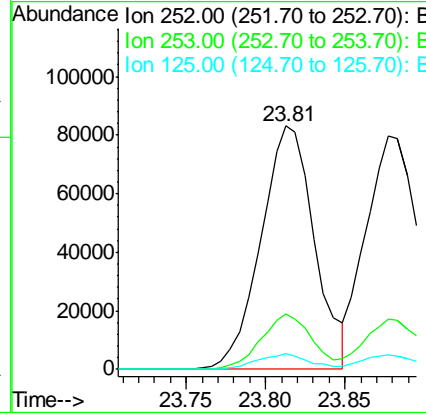
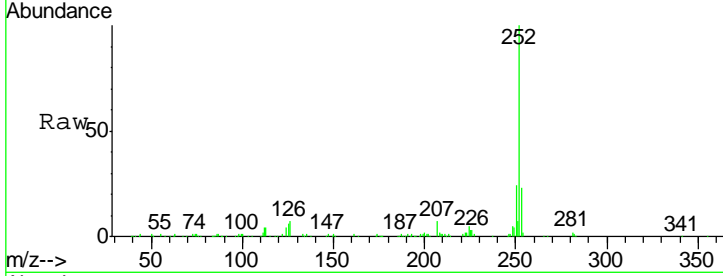




#88
 Benzo(b)fluoranthene
 Concen: 21.27 ng/ul
 RT: 23.81 min Scan# 3570
 Delta R.T. -0.02 min
 Lab File: BG019259.D
 Acq: 20 Oct 2015 16:13

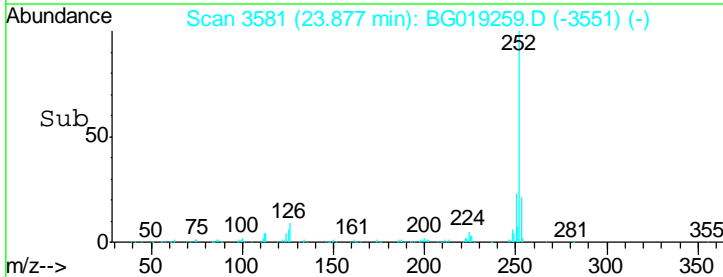
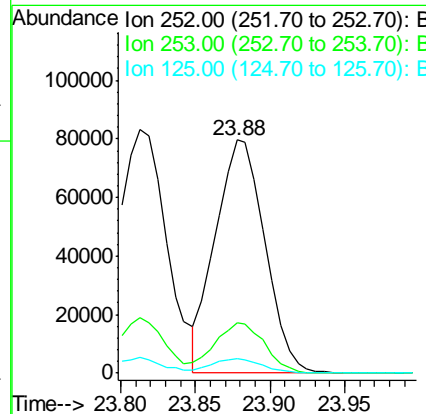
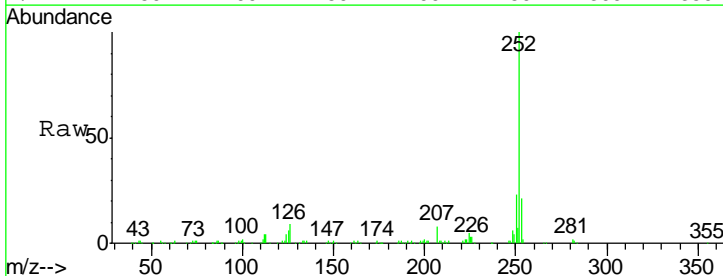
Instrument :
 BNA_G
 ClientSampled :

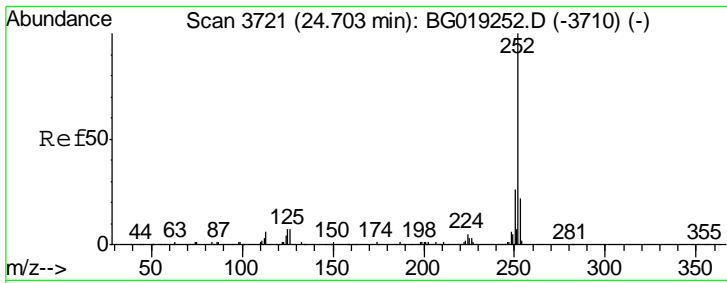
Tgt Ion	Resp	Lower	Upper
252	195522		
253	22.6	17.4	26.2
125	6.3	8.1	12.1#



#89
 Benzo(k)fluoranthene
 Concen: 20.26 ng/ul
 RT: 23.88 min Scan# 3581
 Delta R.T. -0.03 min
 Lab File: BG019259.D
 Acq: 20 Oct 2015 16:13

Tgt Ion	Resp	Lower	Upper
252	182704		
253	21.5	17.2	25.8
125	6.4	8.4	12.6#

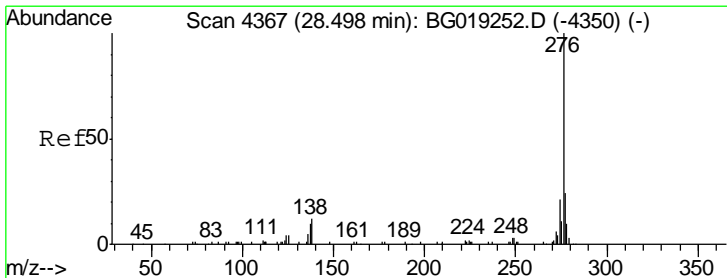
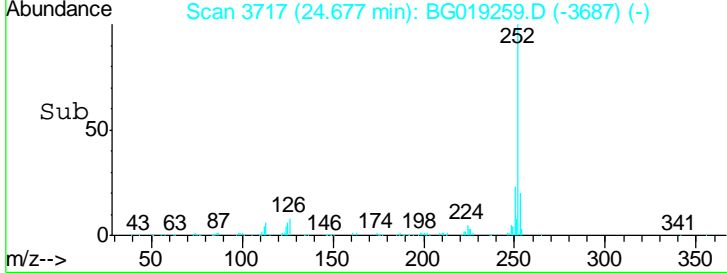
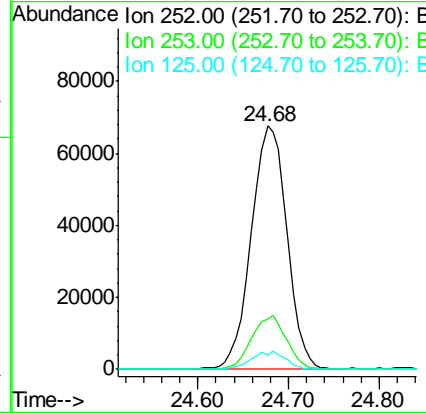
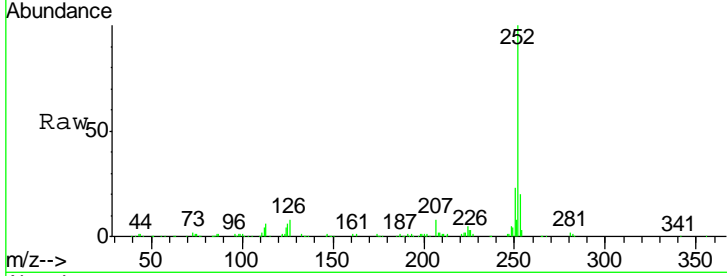




#91
 Benzo(a)pyrene
 Concen: 20.91 ng/ul
 RT: 24.68 min Scan# 3717
 Delta R.T. -0.03 min
 Lab File: BG019259.D
 Acq: 20 Oct 2015 16:13

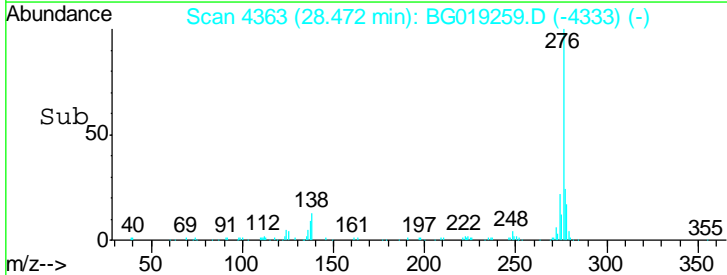
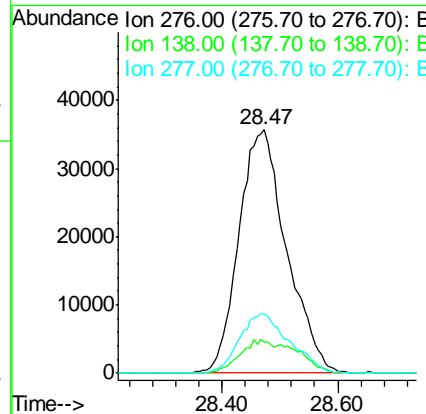
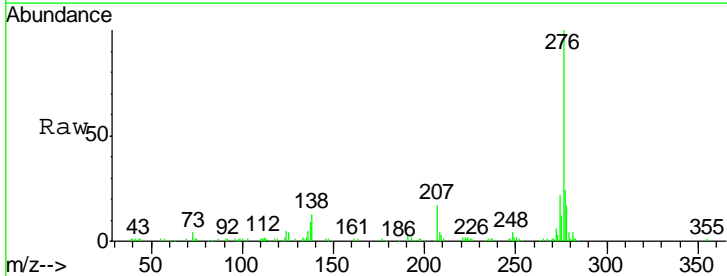
Instrument :
 BNA_G
 ClientSampled :

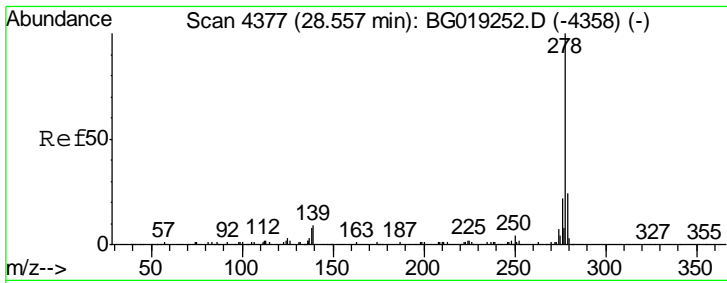
Tgt Ion	Resp	Lower	Upper
252	184781		
253	20.4	18.1	27.1
125	6.2	9.4	14.2#



#92
 Indeno(1,2,3-cd)pyrene
 Concen: 19.49 ng/ul
 RT: 28.47 min Scan# 4363
 Delta R.T. -0.03 min
 Lab File: BG019259.D
 Acq: 20 Oct 2015 16:13

Tgt Ion	Resp	Lower	Upper
276	204521		
138	13.0	14.9	22.3#
277	24.5	18.0	27.0

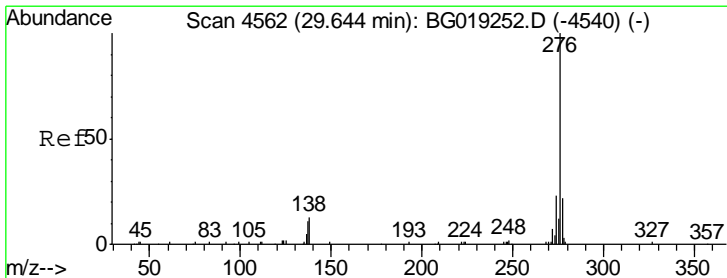
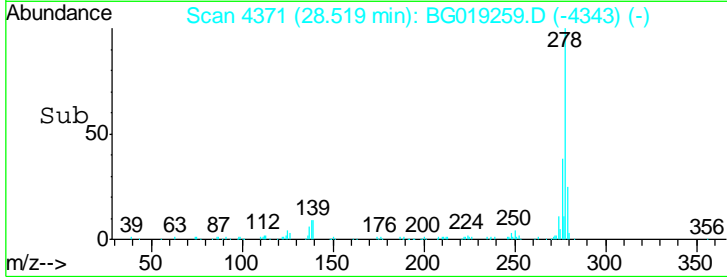
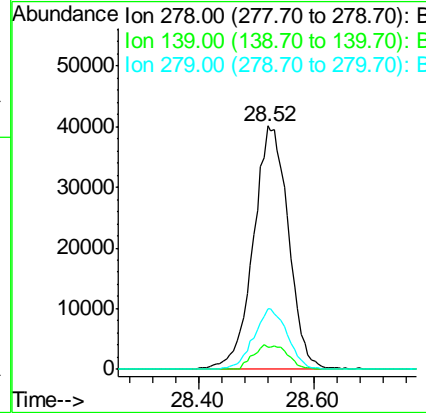
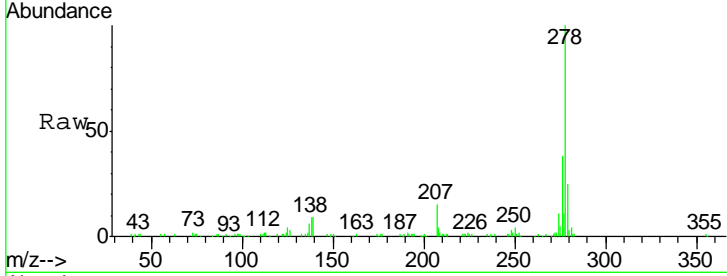




#93
 Dibenzo(a,h)anthracene
 Concen: 18.56 ng/ul
 RT: 28.52 min Scan# 4371
 Delta R.T. -0.04 min
 Lab File: BG019259.D
 Acq: 20 Oct 2015 16:13

Instrument :
 BNA_G
 ClientSampled :

Tgt Ion	Resp	Lower	Upper
278	169745		
139	9.1	11.2	16.8#
279	24.6	17.6	26.4



#94
 Benzo(g,h,i)perylene
 Concen: 19.60 ng/ul
 RT: 29.61 min Scan# 4556
 Delta R.T. -0.04 min
 Lab File: BG019259.D
 Acq: 20 Oct 2015 16:13

Tgt Ion	Resp	Lower	Upper
276	169140		
138	13.2	16.3	24.5#
277	22.2	18.7	28.1

