

Data Path : Z:\HPCHEM1\BNA G\DATA\BG102017\
 Data File : BG029378.D
 Acq On : 20 Oct 2017 18:46
 Operator : SJ/JU
 Sample : I5981-06
 Misc :
 ALS Vial : 11 Sample Multiplier: 1

Instrument :
 BNA_G
 ClientSampleId :

Quant Time: Oct 21 22:32:15 2017
 Quant Method : Z:\HPCHEM1\BNA G\METHODS\8270-BG101617.M
 Quant Title : ASP BNA STANDARDS FOR 5 POINT CALIBRATION
 QLast Update : Mon Oct 16 17:32:15 2017
 Response via : Initial Calibration

Internal Standards	R.T.	QIon	Response	Conc	Units	Dev(Min)
1) 1,4-Dichlorobenzene-d4	8.17	152	56523	20.00	ng	0.00
21) Naphthalene-d8	10.98	136	241741	20.00	ng	-0.01
38) Acenaphthene-d10	14.78	164	158789	20.00	ng	-0.01
63) Phenanthrene-d10	17.52	188	447877	20.00	ng	-0.01
75) Chrysene-d12	21.79	240	512896	20.00	ng	-0.01
86) Perylene-d12	25.09	264	525247	20.00	ng	-0.02
System Monitoring Compounds						
5) 2-Fluorophenol	5.72	112	455707	134.69	ng	0.00
7) Phenol-d6	7.32	99	525633	110.68	ng	0.00
23) Nitrobenzene-d5	9.33	82	385984	101.46	ng	-0.01
41) 2,4,6-Tribromophenol	16.26	330	380985	185.83	ng	-0.01
44) 2-Fluorobiphenyl	13.41	172	1033542	95.46	ng	0.00
78) Terphenyl-d14	20.11	244	2019696	89.58	ng	-0.01

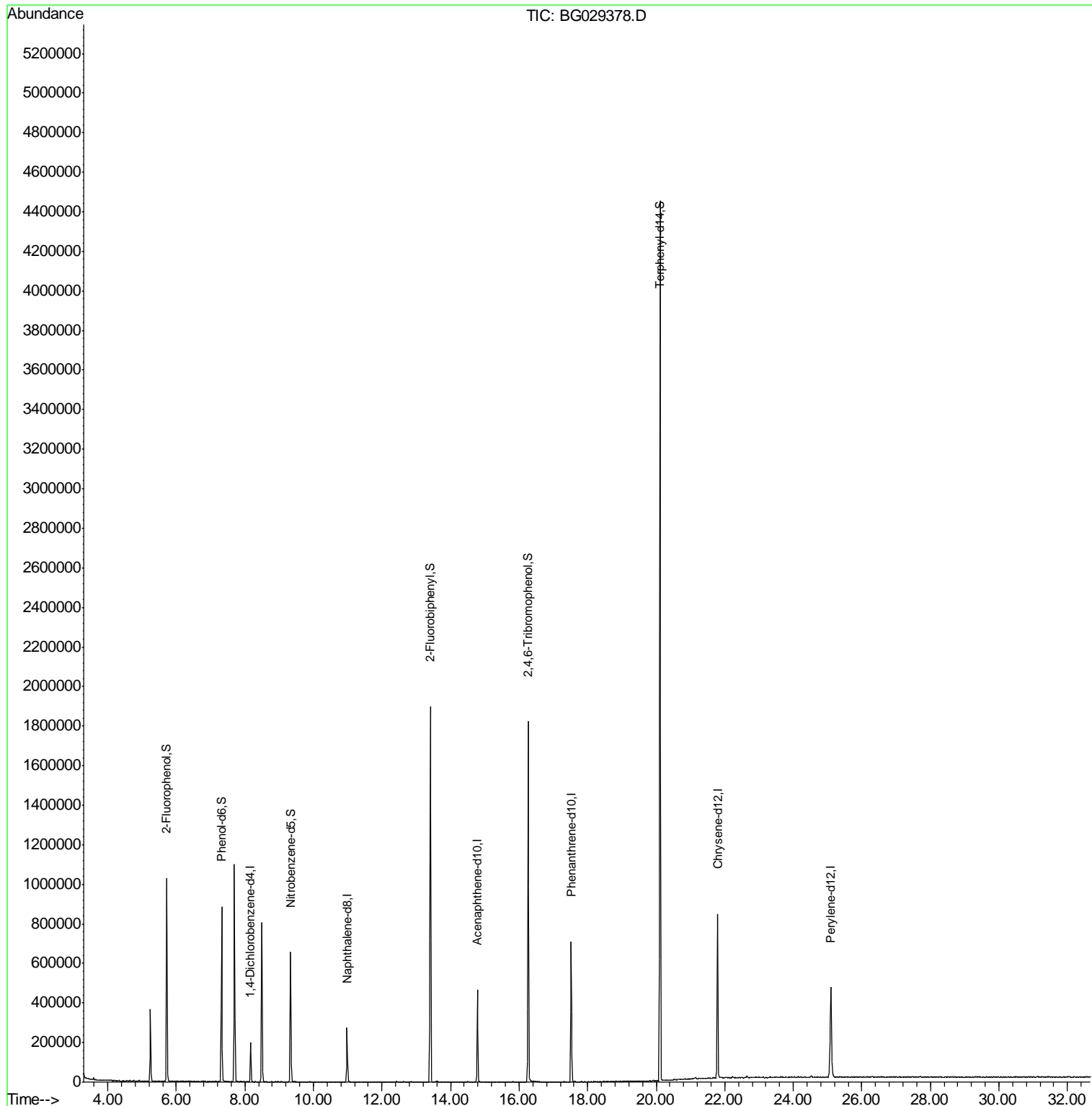
Target Compounds Qvalue

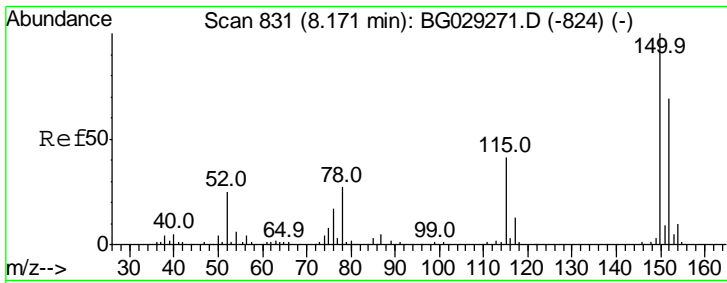
(#) = qualifier out of range (m) = manual integration (+) = signals summed

Data Path : Z:\HPCHEM1\BNA G\DATA\BG102017\
 Data File : BG029378.D
 Acq On : 20 Oct 2017 18:46
 Operator : SJ/JU
 Sample : I5981-06
 Misc :
 ALS Vial : 11 Sample Multiplier: 1

Instrument :
 BNA_G
 ClientSampleId :

Quant Time: Oct 21 22:32:15 2017
 Quant Method : Z:\HPCHEM1\BNA G\METHODS\8270-BG101617.M
 Quant Title : ASP BNA STANDARDS FOR 5 POINT CALIBRATION
 QLast Update : Mon Oct 16 17:32:15 2017
 Response via : Initial Calibration

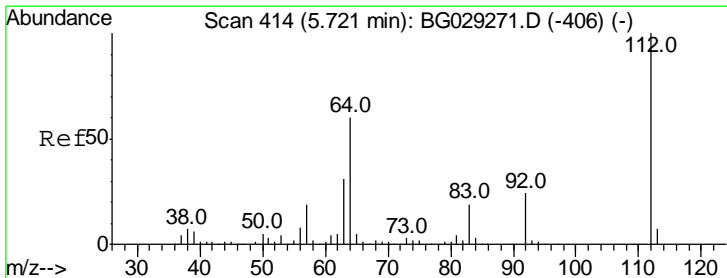
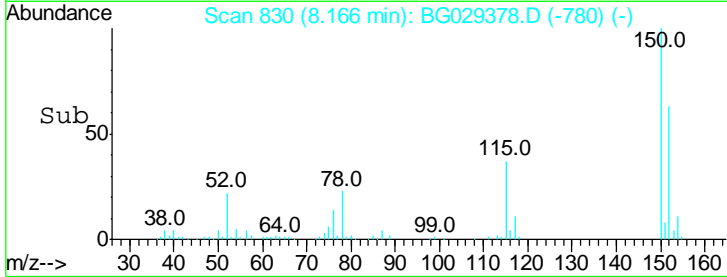
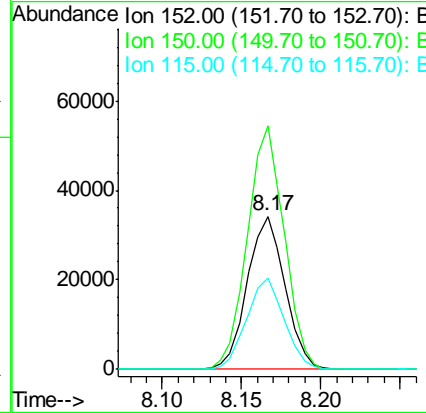
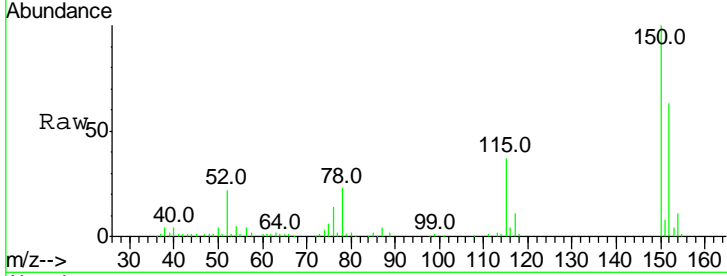




#1
 1,4-Dichlorobenzene-d4
 Concen: 20.000 ng
 RT: 8.17 min Scan# 830
 Delta R.T. -0.00 min
 Lab File: BG029378.D
 Acq: 20 Oct 2017 18:46

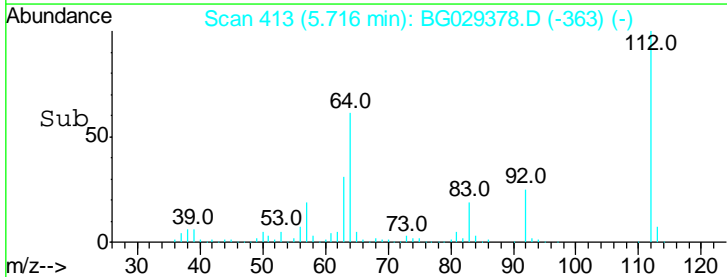
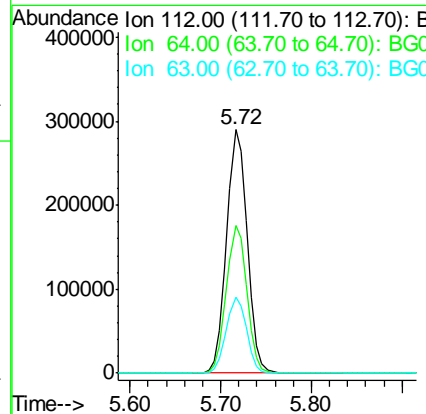
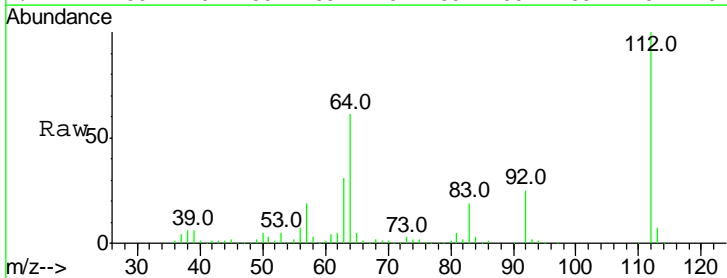
Instrument :
 BNA_G
 ClientSampled :

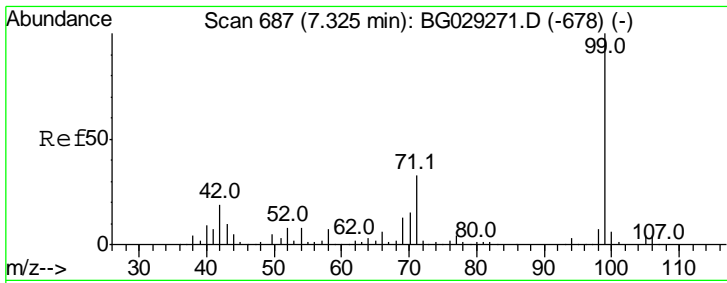
Tgt Ion	Resp	Lower	Upper
152	100		
150	158.9	126.6	189.8
115	59.3	53.0	79.4



#5
 2-Fluorophenol
 Concen: 134.685 ng
 RT: 5.72 min Scan# 413
 Delta R.T. -0.00 min
 Lab File: BG029378.D
 Acq: 20 Oct 2017 18:46

Tgt Ion	Resp	Lower	Upper
112	100		
64	60.8	56.3	84.5
63	31.1	30.1	45.1

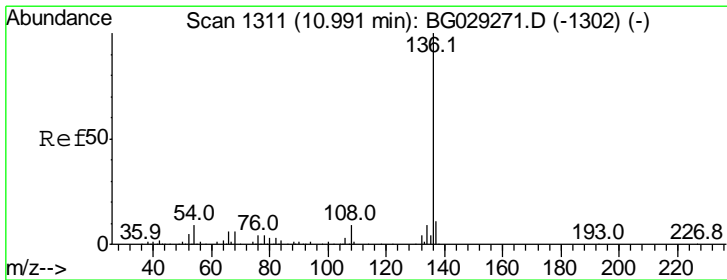
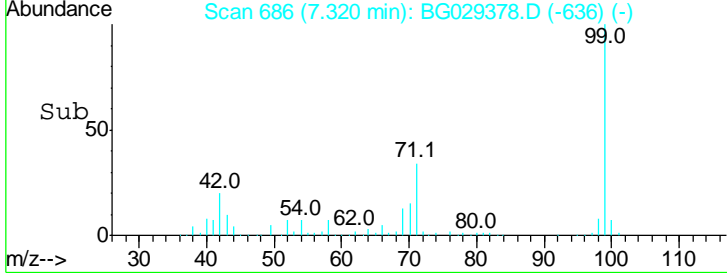
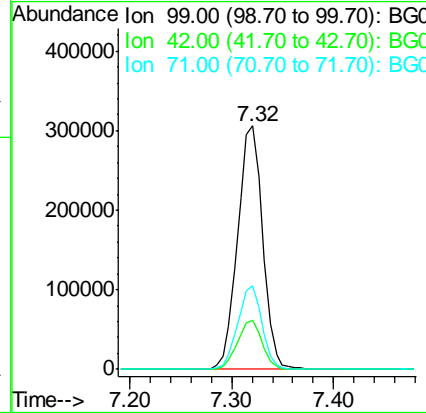
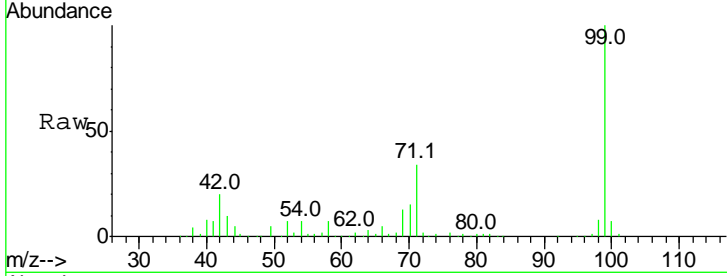




#7
 Phenol-d6
 Concen: 110.677 ng
 RT: 7.32 min Scan# 686
 Delta R.T. -0.00 min
 Lab File: BG029378.D
 Acq: 20 Oct 2017 18:46

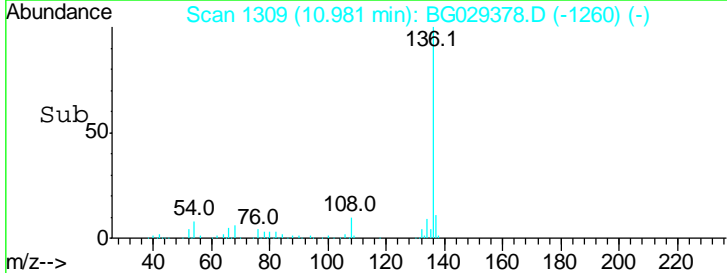
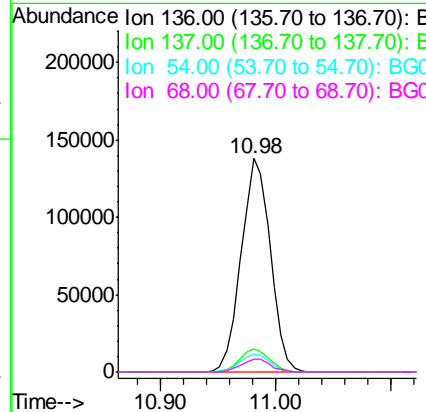
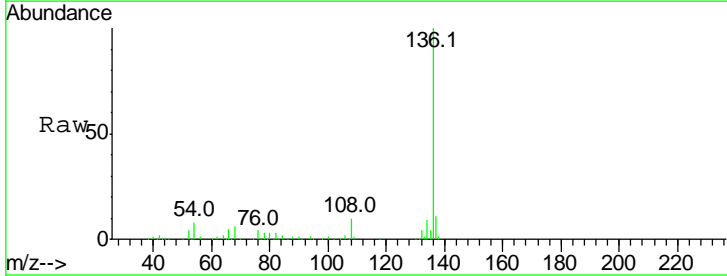
Instrument :
 BNA_G
 ClientSampled :

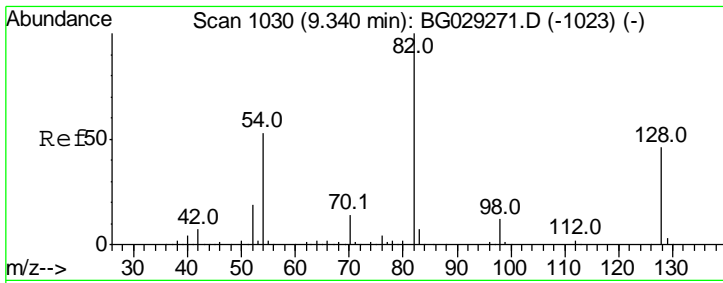
Tgt Ion	Resp	Lower	Upper
99	100		
42	20.2	14.1	21.1
71	34.4	26.1	39.1



#21
 Naphthalene-d8
 Concen: 20.000 ng
 RT: 10.98 min Scan# 1309
 Delta R.T. -0.01 min
 Lab File: BG029378.D
 Acq: 20 Oct 2017 18:46

Tgt Ion	Resp	Lower	Upper
136	100		
137	10.9	9.2	13.8
54	8.4	10.3	15.5#
68	6.1	4.5	6.7

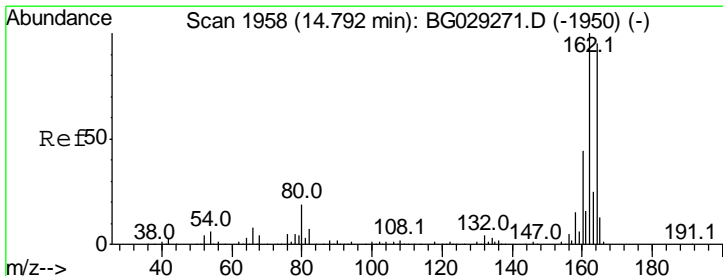
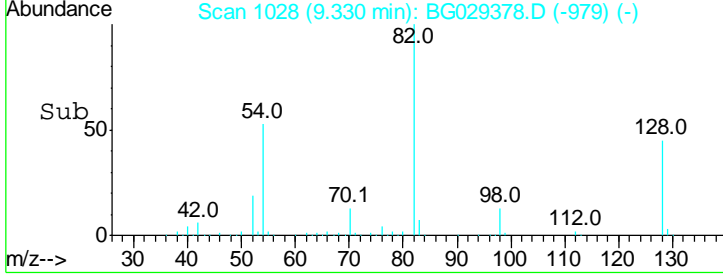
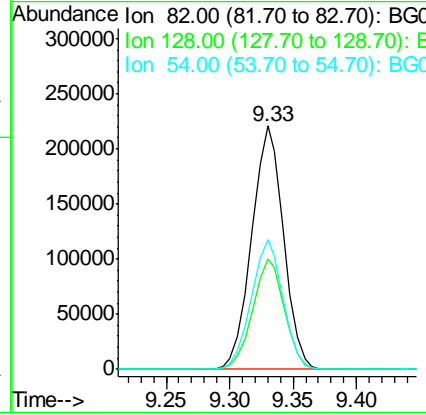
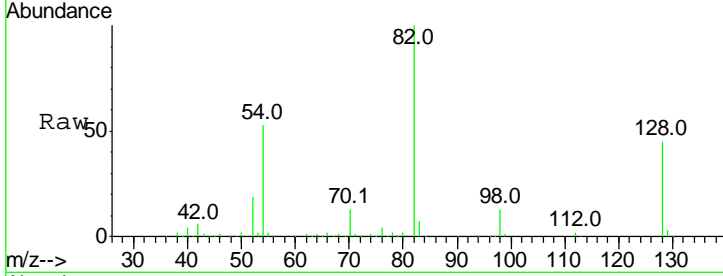




#23
 Nitrobenzene-d5
 Concen: 101.465 ng
 RT: 9.33 min Scan# 1028
 Delta R.T. -0.01 min
 Lab File: BG029378.D
 Acq: 20 Oct 2017 18:46

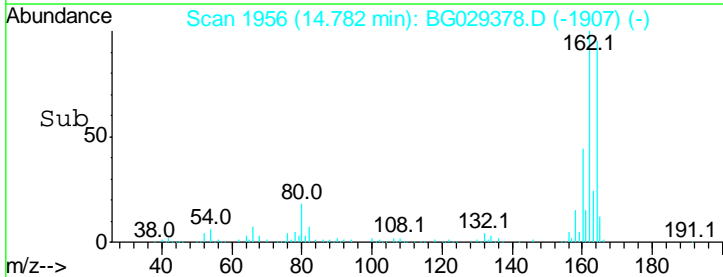
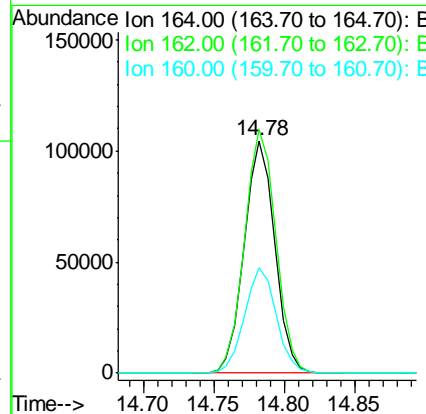
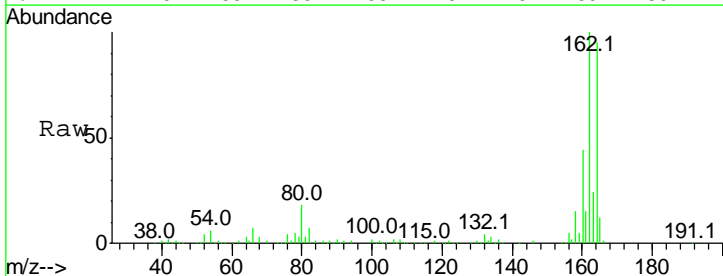
Instrument :
 BNA_G
 ClientSampled :

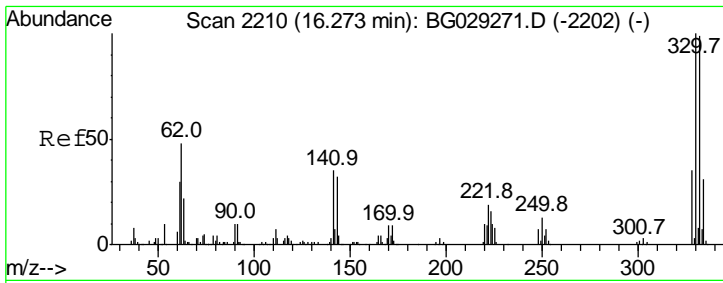
Tgt Ion	Resp	Lower	Upper
82	100		
128	45.3	29.7	44.5#
54	53.5	43.1	64.7



#38
 Acenaphthene-d10
 Concen: 20.000 ng
 RT: 14.78 min Scan# 1956
 Delta R.T. -0.01 min
 Lab File: BG029378.D
 Acq: 20 Oct 2017 18:46

Tgt Ion	Resp	Lower	Upper
164	100		
162	104.8	78.8	118.2
160	45.6	35.4	53.0

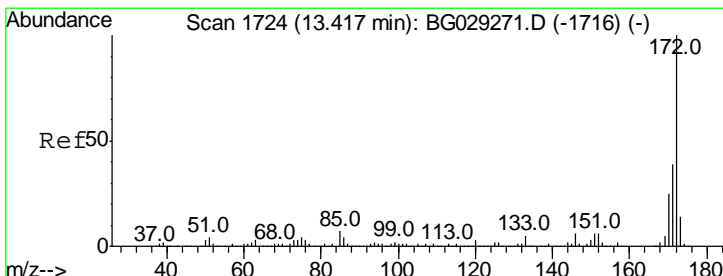
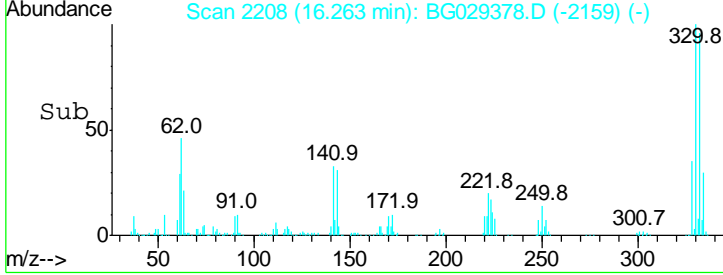
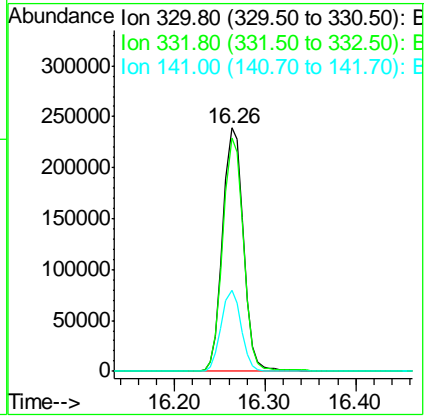
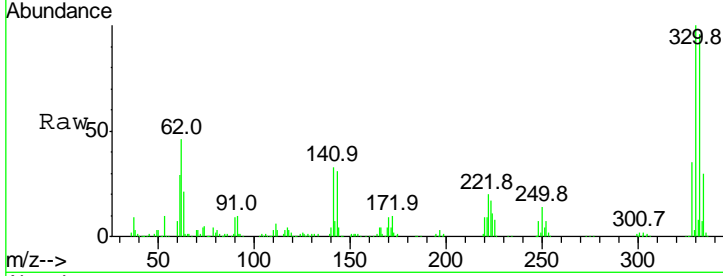




#41
 2,4,6-Tribromophenol
 Concen: 185.835 ng
 RT: 16.26 min Scan# 2208
 Delta R.T. -0.01 min
 Lab File: BG029378.D
 Acq: 20 Oct 2017 18:46

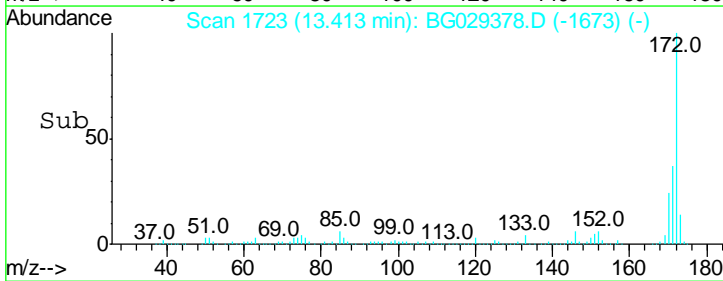
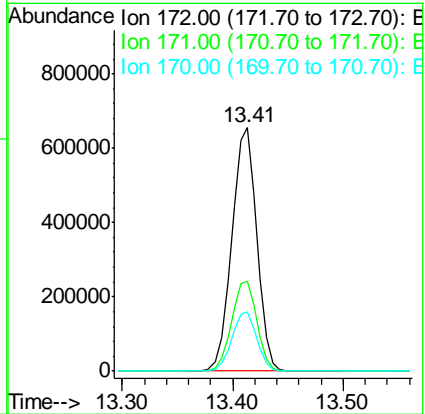
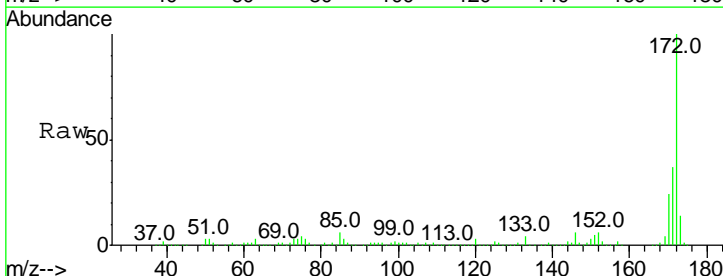
Instrument :
 BNA_G
 ClientSampled :

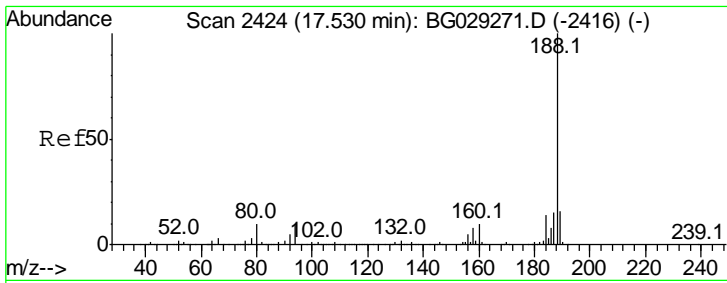
Tgt Ion	Resp	Lower	Upper
330	100		
332	95.3	77.0	115.6
141	32.0	25.2	37.8



#44
 2-Fluorobiphenyl
 Concen: 95.463 ng
 RT: 13.41 min Scan# 1723
 Delta R.T. -0.00 min
 Lab File: BG029378.D
 Acq: 20 Oct 2017 18:46

Tgt Ion	Resp	Lower	Upper
172	100		
171	37.1	30.0	45.0
170	24.2	19.5	29.3

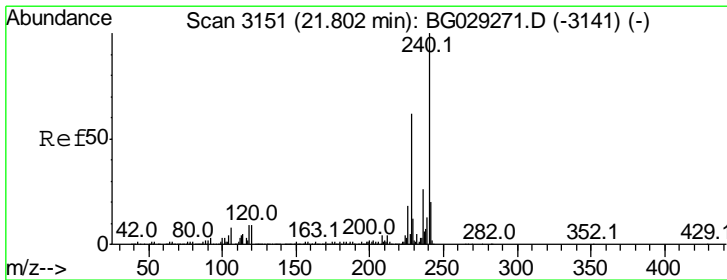
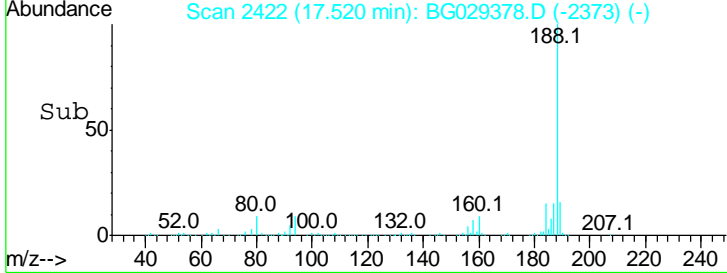
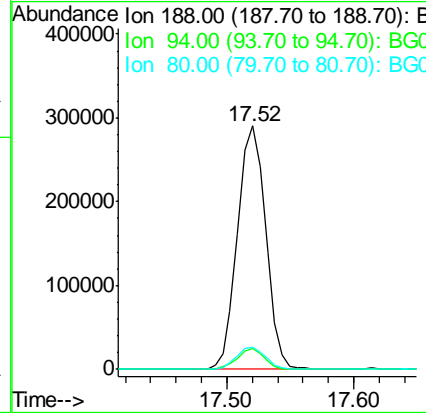
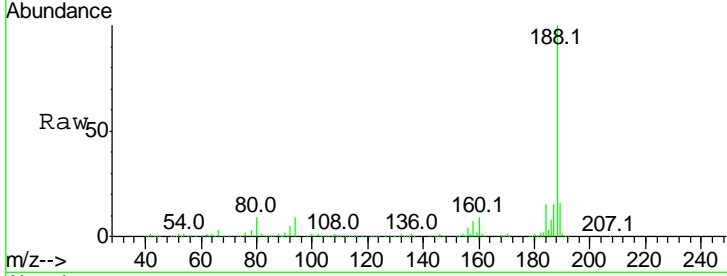




#63
 Phenanthrene-d10
 Concen: 20.000 ng
 RT: 17.52 min Scan# 2422
 Delta R.T. -0.01 min
 Lab File: BG029378.D
 Acq: 20 Oct 2017 18:46

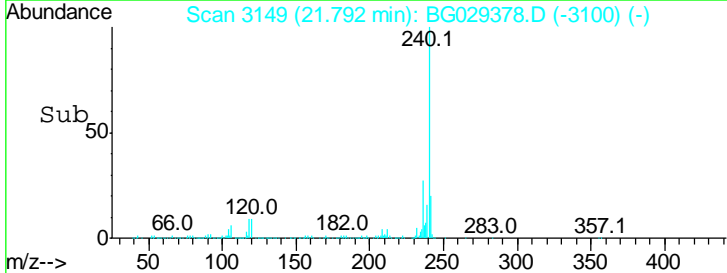
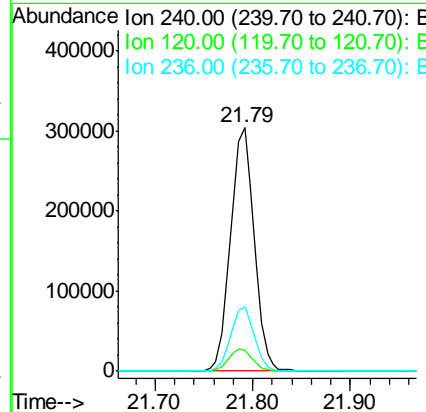
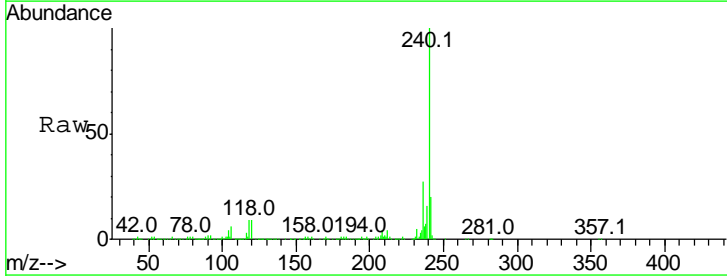
Instrument :
 BNA_G
 ClientSampled :

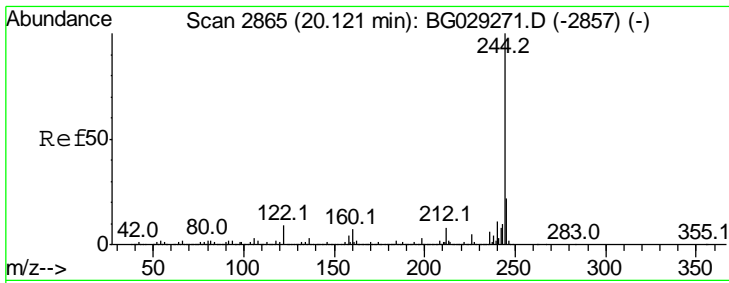
Tgt Ion	Resp	Lower	Upper
188	100		
94	8.6	6.9	10.3
80	8.9	7.7	11.5



#75
 Chrysene-d12
 Concen: 20.000 ng
 RT: 21.79 min Scan# 3149
 Delta R.T. -0.01 min
 Lab File: BG029378.D
 Acq: 20 Oct 2017 18:46

Tgt Ion	Resp	Lower	Upper
240	100		
120	8.8	6.8	10.2
236	26.7	20.9	31.3



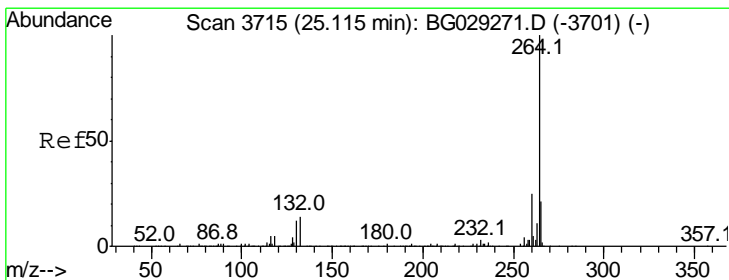
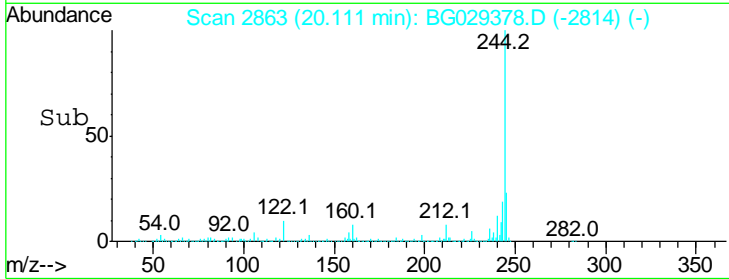
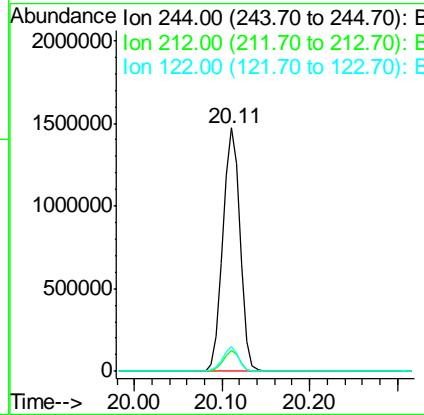
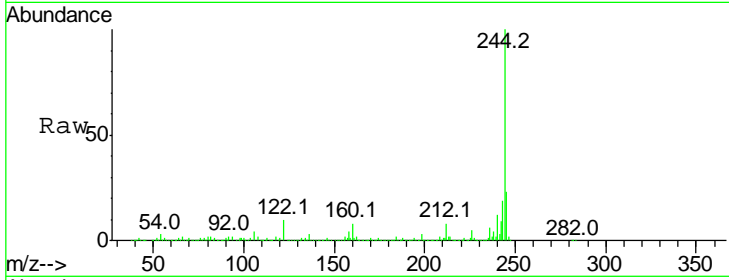


#78
 Terphenyl-d14
 Concen: 89.583 ng
 RT: 20.11 min Scan# 2863
 Delta R.T. -0.01 min
 Lab File: BG029378.D
 Acq: 20 Oct 2017 18:46

Instrument :
 BNA_G
 ClientSampled :

Tgt Ion: 244 Resp: 2019696

Ion	Ratio	Lower	Upper
244	100		
212	8.5	5.8	8.8
122	10.0	7.0	10.4



#86
 Perylene-d12
 Concen: 20.000 ng
 RT: 25.09 min Scan# 3711
 Delta R.T. -0.02 min
 Lab File: BG029378.D
 Acq: 20 Oct 2017 18:46

Tgt Ion: 264 Resp: 525247

Ion	Ratio	Lower	Upper
264	100		
260	24.2	17.4	26.0
265	22.1	17.7	26.5

