

Data Path : Z:\HPCHEM1\BNA G\DATA\BG102815\  
 Data File : BG019402.D  
 Acq On : 29 Oct 2015 4:42  
 Operator : UM/NP  
 Sample : G4120-17  
 Misc :  
 ALS Vial : 23 Sample Multiplier: 1

Instrument :  
 BNA\_G  
 ClientSampleId :  
 E5LS6

Quant Time: Oct 29 06:50:56 2015  
 Quant Method : Z:\HPCHEM1\BNA G\METHODS\SOM02.2-EPA-BG102815.M  
 Quant Title : SVOA CALIBRATION  
 QLast Update : Thu Oct 29 04:26:00 2015  
 Response via : Initial Calibration

Internal Standards	R.T.	QIon	Response	Conc	Units	Dev(Min)
1) 1,4-Dichlorobenzene-d4	8.21	152	40138	20.00	ng/ul	0.00
18) Naphthalene-d8	10.89	136	202169	20.00	ng/ul	-0.14
36) Acenaphthene-d10	14.61	164	37952	20.00	ng/ul	-0.23
62) Phenanthrene-d10	17.31	188	1244	20.00	ng/ul	-0.26
78) Chrysene-d12	21.54	240	856	20.00	ng/ul	-0.32
86) Perylene-d12	25.02	264	534001	20.00	ng/ul	-0.21

## System Monitoring Compounds

3) 1,4-Dioxane-d8	3.51	96	17694	21.11	ng/uL	0.00
5) Phenol-d5	7.37	99	29797	8.09	ng/ul	0.02
7) Bis-(2-Chloroethyl)ether-d	7.52	67	74558	31.92	ng/ul	0.00
9) 2-Chlorophenol-d4	7.74	132	62803	27.30	ng/ul	0.00
13) 4-Methylphenol-d8	8.95	113	55642	18.96	ng/ul	0.04
19) Nitrobenzene-d5	9.31	128	68	0.05	ng/ul	-0.06
22) 2-Nitrophenol-d4	10.12	143	48085	27.26	ng/ul	0.01
26) 2,4-Dichlorophenol-d3	10.50	165	137	0.04	ng/ul	-0.16
29) 4-Chloroaniline-d4	11.02	131	6169	1.59	ng/ul	-0.14
44) Dimethylphthalate-d6	14.00	166	20626	6.59	ng/ul	-0.23
47) Acenaphthylene-d8	14.29	160	481	0.14	ng/ul	-0.24
52) 4-Nitrophenol-d4	14.77	143	1731	3.48	ng/ul	-0.24
58) Fluorene-d10	15.56	176	11650	4.02	ng/ul	-0.26
63) 4,6-Dinitro-2-methylphenol	15.70	200	299	37.13	ng/ul	-0.23
71) Anthracene-d10	17.39	188	770	13.58	ng/ul	-0.28
79) Pyrene-d10	19.64	212	3605	96.24	ng/ul	-0.30
90) Benzo(a)pyrene-d12	24.79	264	334	0.01	ng/ul	-0.21

## Target Compounds

Target Compounds	R.T.	QIon	Response	Conc	Units	Ovalue
4) Benzaldehyde	7.33	77	5838	2.44	ng/ul#	1
6) Phenol	7.40	94	425365	108.37	ng/ul	98
8) Bis(2-Chloroethyl)ether	7.61	93	4102	1.52	ng/ul#	72
11) 2-Methylphenol	8.69	108	1405186	484.05	ng/ul	97
14) Acetophenone	9.06	105	311761	63.28	ng/ul#	1
16) 4-Methylphenol	9.07	108	5249299	1655.94	ng/ul	95
17) Hexachloroethane	9.33	117	9438	7.63	ng/ul#	1
20) Nitrobenzene	9.30	77	21469	3.70	ng/ul#	1
24) 2,4-Dimethylphenol	10.01	107	1035542	197.90	ng/ul#	51
25) Bis(2-Chloroethoxy)methane	10.26	93	186537	37.45	ng/ul#	11
28) Naphthalene	11.11	128	794412	78.53	ng/ul	97
33) 4-Chloro-3-methylphenol	12.16	107	75424	15.37	ng/ul#	34
43) 2-Nitroaniline	13.67	65	34681	38.75	ng/ul#	35
45) Dimethylphthalate	14.07	163	5706	1.78	ng/ul#	1
46) 2,6-Dinitrotoluene	14.17	165	2141	3.31	ng/ul#	1
49) 3-Nitroaniline	14.53	138	7994	14.34	ng/ul#	1
53) 4-Nitrophenol	14.80	109	2371	3.06	ng/ul#	57
55) 2,4-Dinitrotoluene	14.94	165	1061	1.04	ng/ul#	1
56) 2,3,4,6-Tetrachlorophenol	15.21	232	1128	1.06	ng/ul#	1
57) Diethylphthalate	15.40	149	6919	2.19	ng/ul#	1
61) 4-Nitroaniline	15.63	138	963	1.50	ng/ul#	1
64) 4,6-Dinitro-2-methylphenol	15.72	198	283	32.50	ng/ul#	1
65) N-Nitrosodiphenylamine	15.84	169	4285	133.17	ng/ul#	48

Data Path : Z:\HPCHEM1\BNA G\DATA\BG102815\  
 Data File : BG019402.D  
 Acq On : 29 Oct 2015 4:42  
 Operator : UM/NP  
 Sample : G4120-17  
 Misc :  
 ALS Vial : 23 Sample Multiplier: 1

Instrument :  
 BNA\_G  
 ClientSampleId :  
 E5LS6

Quant Time: Oct 29 06:50:56 2015  
 Quant Method : Z:\HPCHEM1\BNA G\METHODS\SOM02.2-EPA-BG102815.M  
 Quant Title : SVOA CALIBRATION  
 QLast Update : Thu Oct 29 04:26:00 2015  
 Response via : Initial Calibration

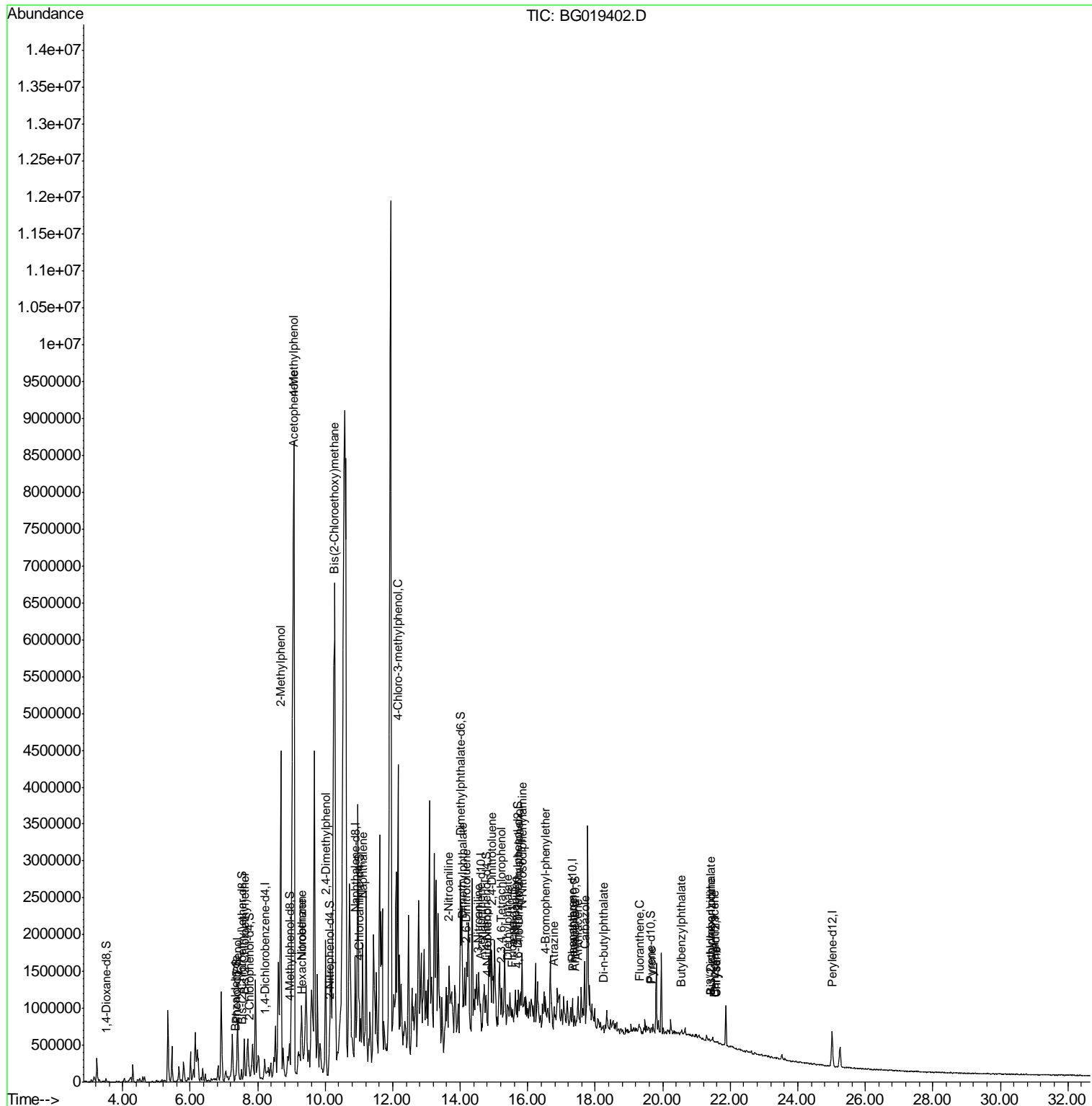
Internal Standards	R.T.	QIon	Response	Conc	Units	Dev(Min)
66) 4-Bromophenyl-phenylether	16.51	248	71	4.80	ng/ul#	1
68) Atrazine	16.77	200	699	43.83	ng/ul#	1
70) Phenanthrene	17.35	178	424	6.75	ng/ul#	1
72) Anthracene	17.47	178	5713	89.27	ng/ul#	1
75) Carbazole	17.70	167	421	8.24	ng/ul#	1
76) Di-n-butylphthalate	18.25	149	3232	51.06	ng/ul#	1
77) Fluoranthene	19.32	202	4420	54.38	ng/ul#	51
80) Pyrene	19.67	202	1711	35.62	ng/ul#	58
81) Butylbenzylphthalate	20.55	149	896	57.39	ng/ul#	1
82) 3,3'-Dichlorobenzidine	21.42	252	641	38.22	ng/ul#	1
83) Benzo(a)anthracene	21.52	228	337	6.76	ng/ul#	1
84) Bis(2-ethylhexyl)phthalate	21.42	149	990	44.63	ng/ul#	82
85) Chrysene	21.59	228	440	9.41	ng/ul#	1

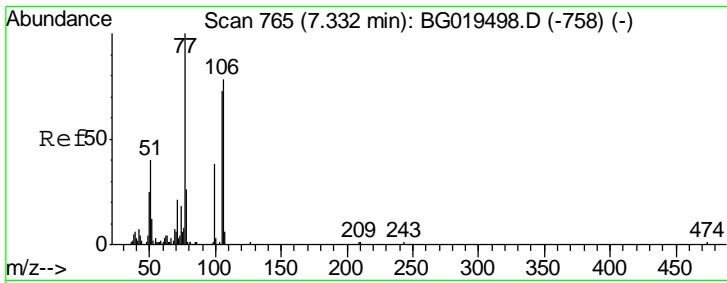
(#) = qualifier out of range (m) = manual integration (+) = signals summed

Data Path : Z:\HPCHEM1\BNA G\DATA\BG102815\  
 Data File : BG019402.D  
 Acq On : 29 Oct 2015 4:42  
 Operator : UM/NP  
 Sample : G4120-17  
 Misc :  
 ALS Vial : 23 Sample Multiplier: 1

Instrument :  
 BNA\_G  
 Client Sampled :  
 E5LS6

Quant Time: Oct 29 06:50:56 2015  
 Quant Method : Z:\HPCHEM1\BNA G\METHODS\SOM02.2-EPA-BG102815.M  
 Quant Title : SVOA CALIBRATION  
 QLast Update : Thu Oct 29 04:26:00 2015  
 Response via : Initial Calibration

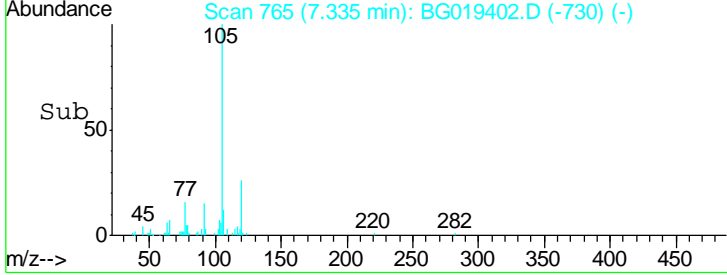
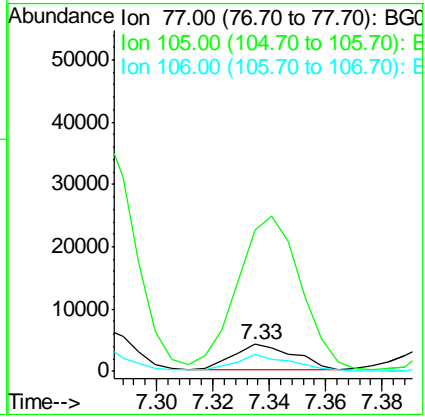
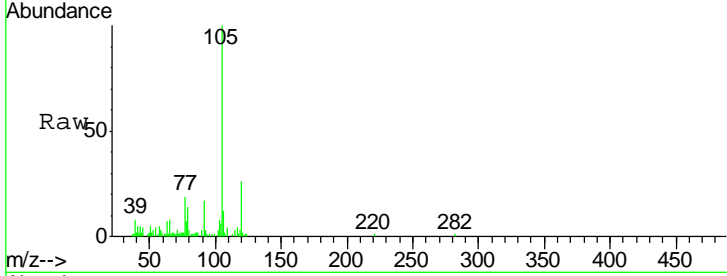




#4  
Benzaldehyde  
Concen: 2.44 ng/ul  
RT: 7.33 min Scan# 765  
Delta R.T. 0.00 min  
Lab File: BG019402.D  
Acq: 29 Oct 2015 4:42

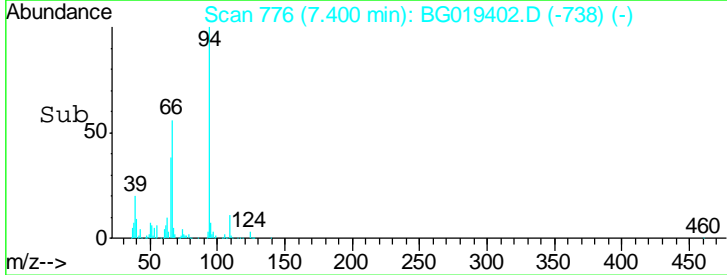
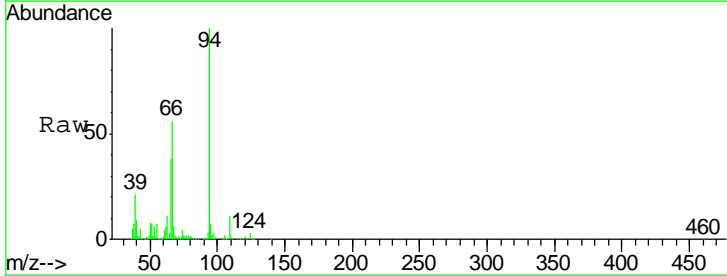
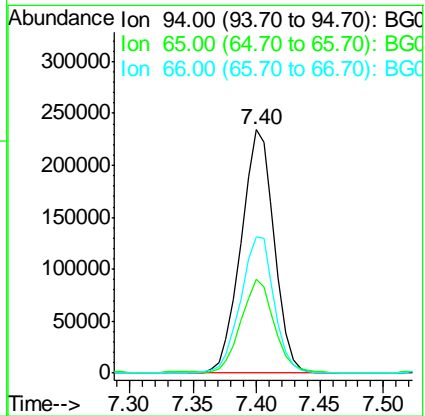
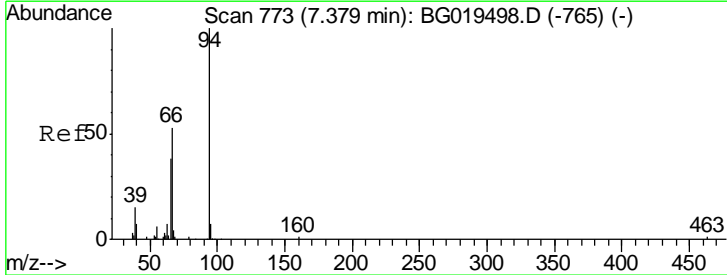
**Instrument :**  
BNA\_G  
**ClientSampled :**  
E5LS6

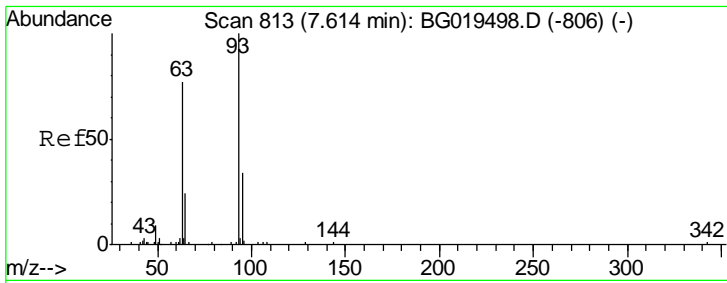
Tgt Ion	Resp	Lower	Upper
77	100		
105	528.2	61.6	92.4#
106	61.8	56.4	84.6



#6  
Phenol  
Concen: 108.37 ng/ul  
RT: 7.40 min Scan# 776  
Delta R.T. 0.02 min  
Lab File: BG019402.D  
Acq: 29 Oct 2015 4:42

Tgt Ion	Resp	Lower	Upper
94	100		
65	38.4	29.3	43.9
66	55.7	45.0	67.6

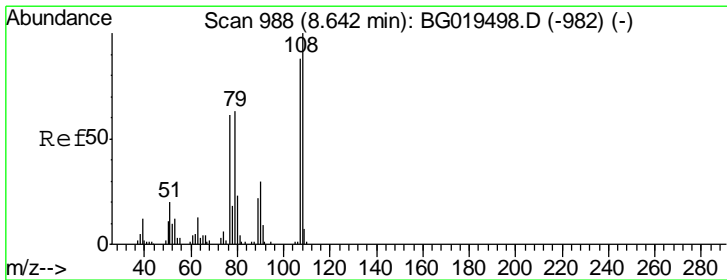
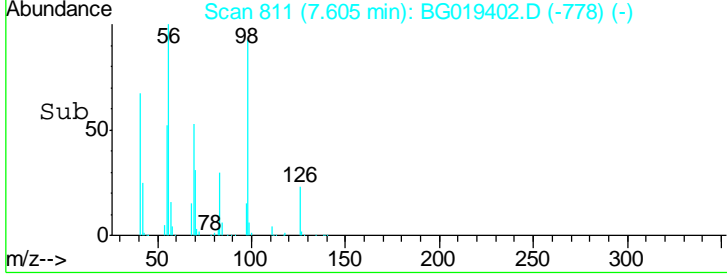
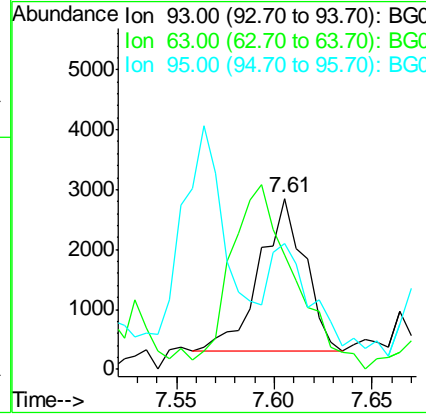
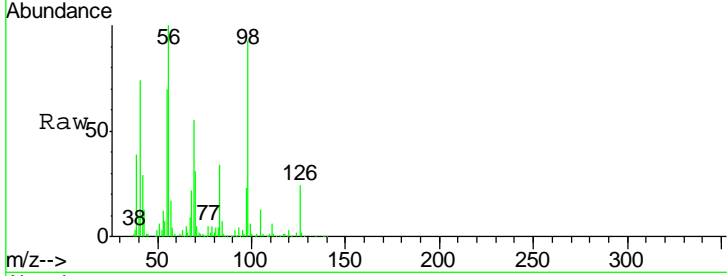




#8  
 Bis(2-Chloroethyl)ether  
 Concen: 1.52 ng/ul  
 RT: 7.61 min Scan# 811  
 Delta R.T. -0.01 min  
 Lab File: BG019402.D  
 Acq: 29 Oct 2015 4:42

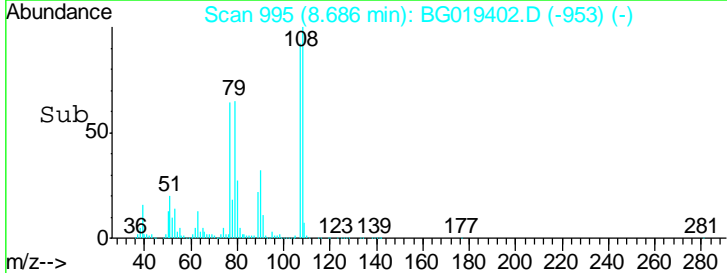
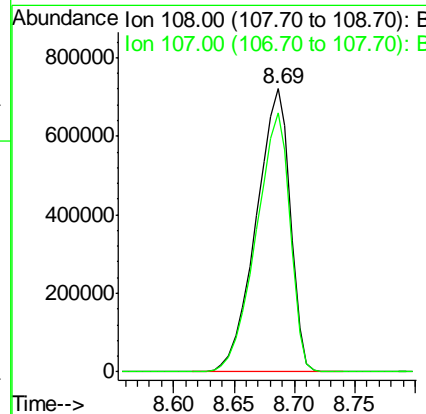
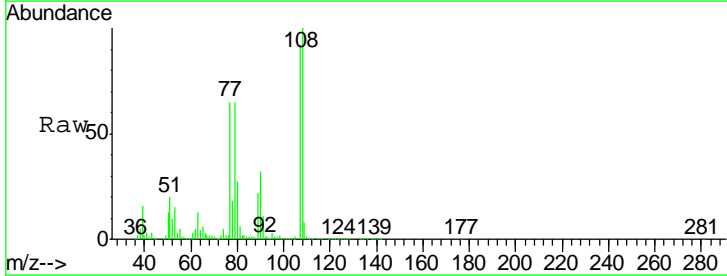
**Instrument :**  
 BNA\_G  
**ClientSampled :**  
 E5LS6

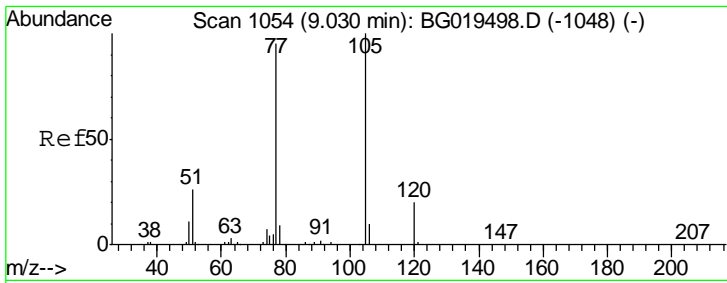
Tgt Ion	Resp	Lower	Upper
93	4102		
93	100		
63	66.7	57.8	86.6
95	73.6	25.6	38.4



#11  
 2-Methylphenol  
 Concen: 484.05 ng/ul  
 RT: 8.69 min Scan# 995  
 Delta R.T. 0.04 min  
 Lab File: BG019402.D  
 Acq: 29 Oct 2015 4:42

Tgt Ion	Resp	Lower	Upper
108	1405186		
108	100		
107	91.6	71.2	106.8

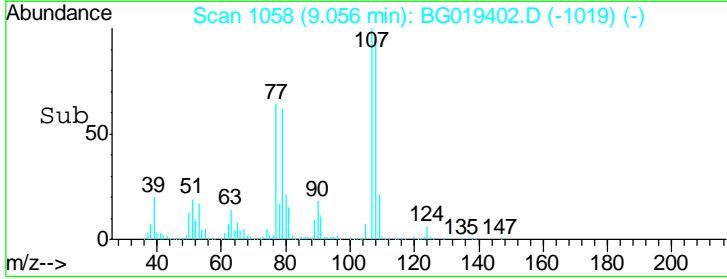
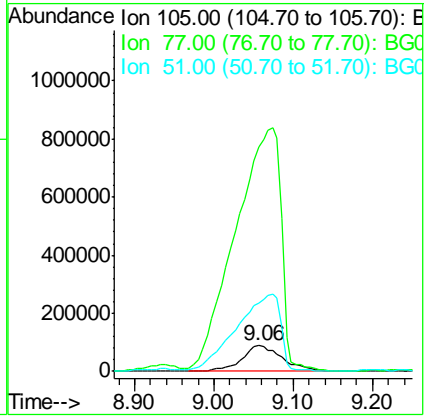
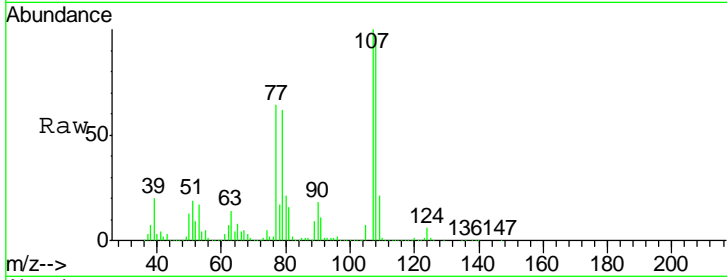




#14  
 Acetophenone  
 Concen: 63.28 ng/ul  
 RT: 9.06 min Scan# 1058  
 Delta R.T. 0.03 min  
 Lab File: BG019402.D  
 Acq: 29 Oct 2015 4:42

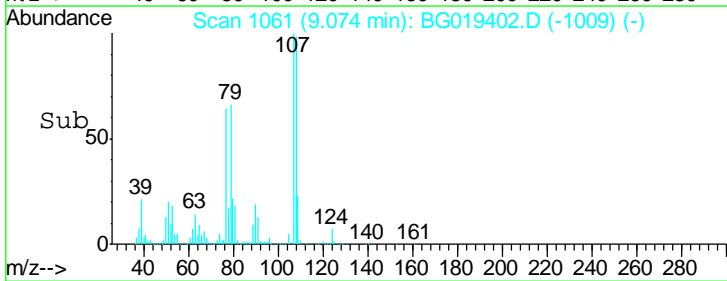
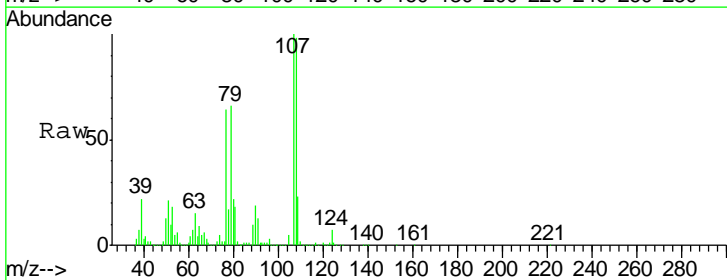
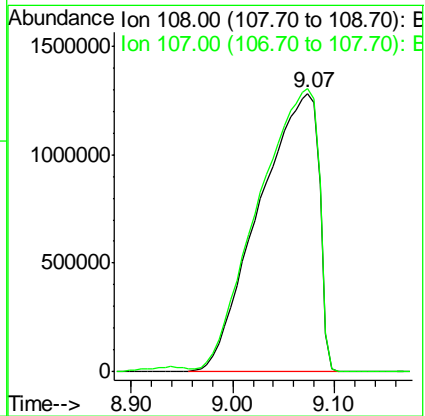
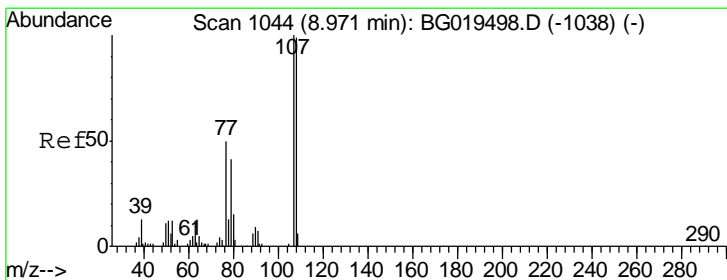
**Instrument :**  
 BNA\_G  
**ClientSampled :**  
 E5LS6

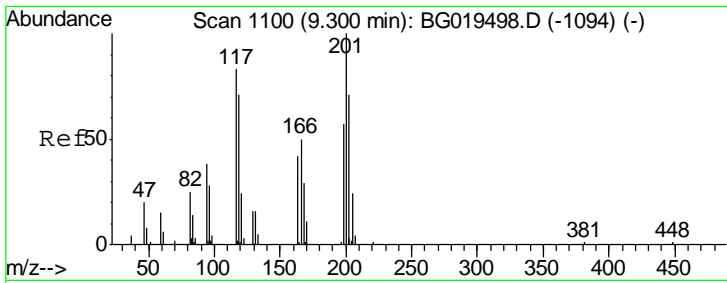
Tgt Ion	Resp	Lower	Upper
105	311761		
77	882.7	69.5	104.3#
51	268.0	21.8	32.6#



#16  
 4-Methylphenol  
 Concen: 1655.94 ng/ul  
 RT: 9.07 min Scan# 1061  
 Delta R.T. 0.10 min  
 Lab File: BG019402.D  
 Acq: 29 Oct 2015 4:42

Tgt Ion	Resp	Lower	Upper
108	5249299		
107	101.6	85.4	128.2

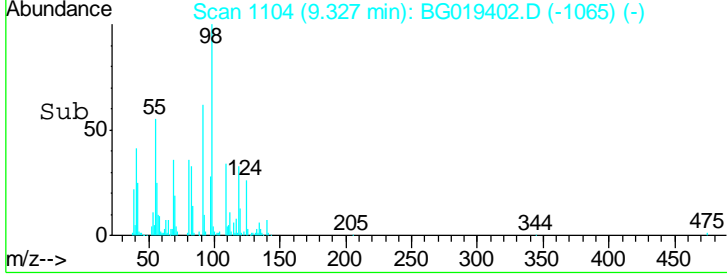
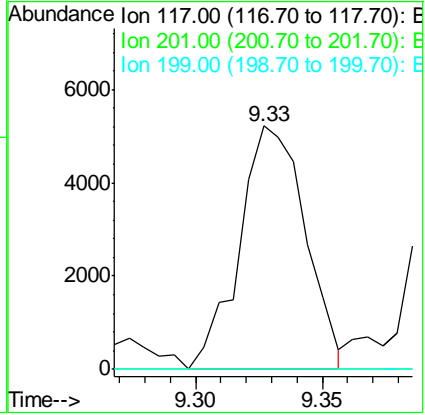
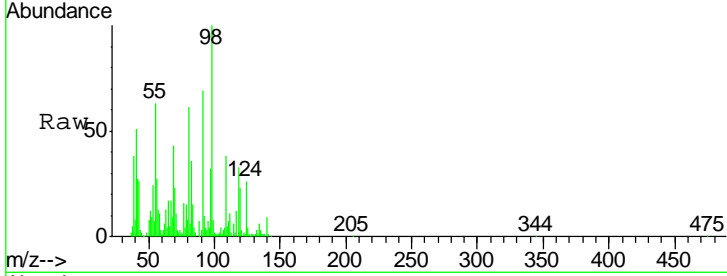




#17  
 Hexachloroethane  
 Concen: 7.63 ng/ul  
 RT: 9.33 min Scan# 1104  
 Delta R.T. 0.03 min  
 Lab File: BG019402.D  
 Acq: 29 Oct 2015 4:42

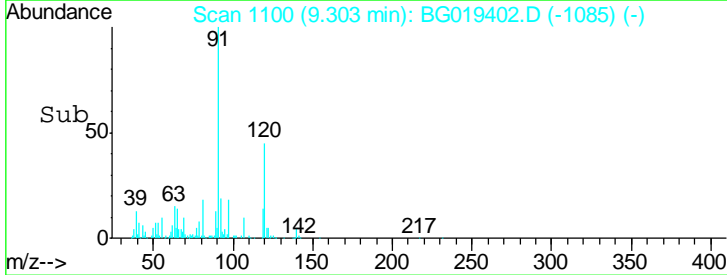
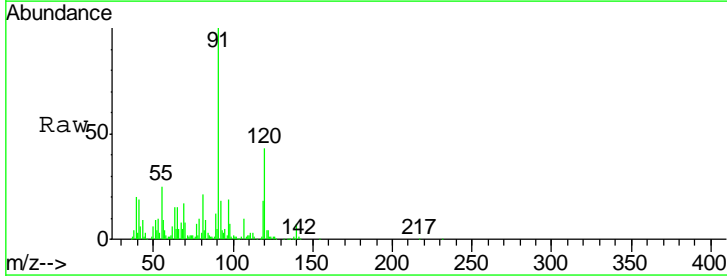
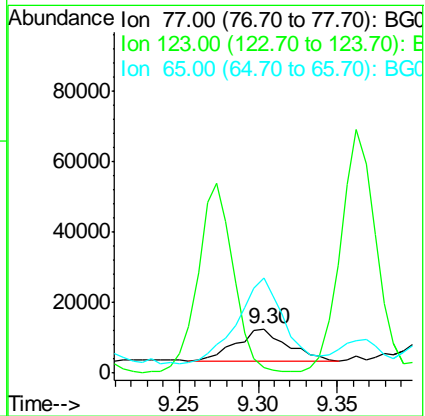
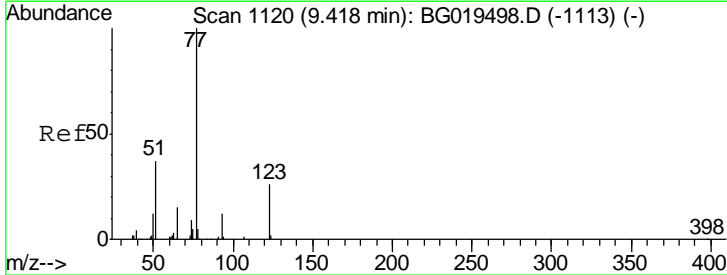
**Instrument :**  
 BNA\_G  
**ClientSampled :**  
 E5LS6

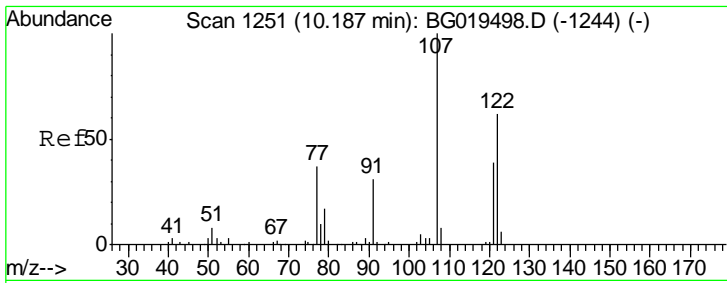
Tgt Ion	Resp	Lower	Upper
117	100		
201	0.0	101.4	152.0#
199	0.0	71.7	107.5#



#20  
 Nitrobenzene  
 Concen: 3.70 ng/ul  
 RT: 9.30 min Scan# 1100  
 Delta R.T. -0.11 min  
 Lab File: BG019402.D  
 Acq: 29 Oct 2015 4:42

Tgt Ion	Resp	Lower	Upper
77	100		
123	11.3	23.4	35.2#
65	215.5	11.6	17.4#



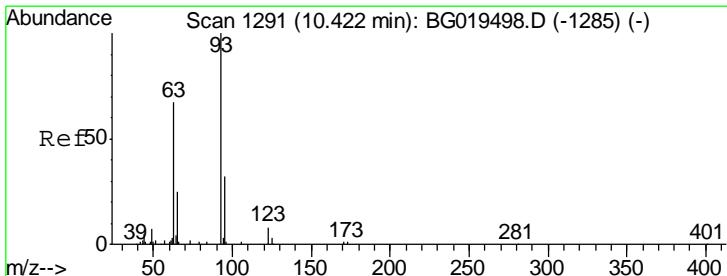
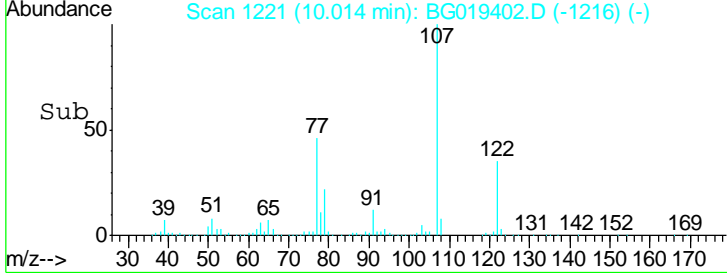
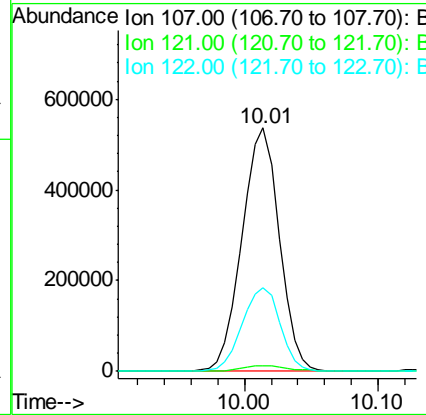
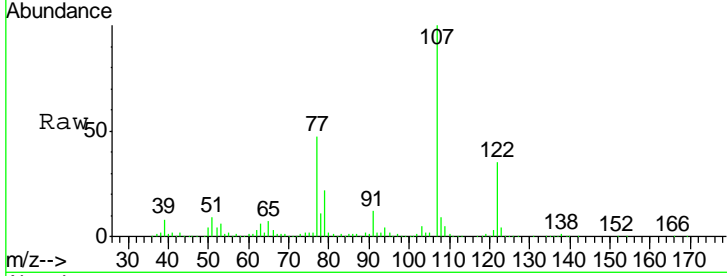


#24  
 2,4-Dimethylphenol  
 Concen: 197.90 ng/ul  
 RT: 10.01 min Scan# 1221  
 Delta R.T. -0.17 min  
 Lab File: BG019402.D  
 Acq: 29 Oct 2015 4:42

Instrument :  
 BNA\_G  
 ClientSampled :  
 E5LS6

Tgt Ion: 107 Resp: 1035542

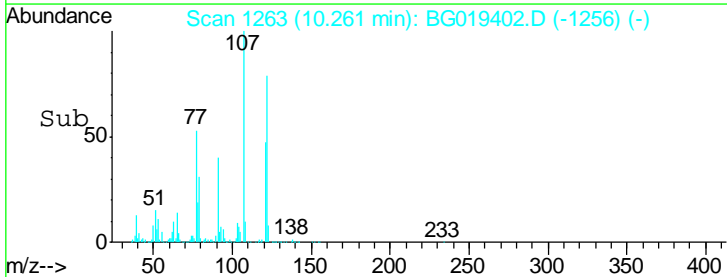
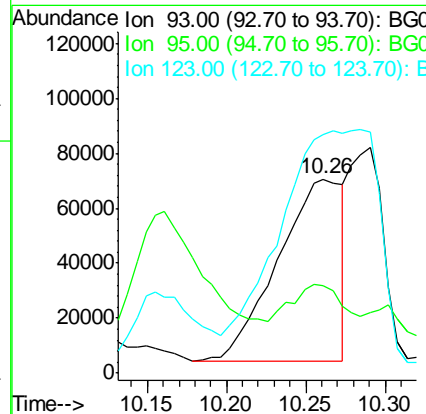
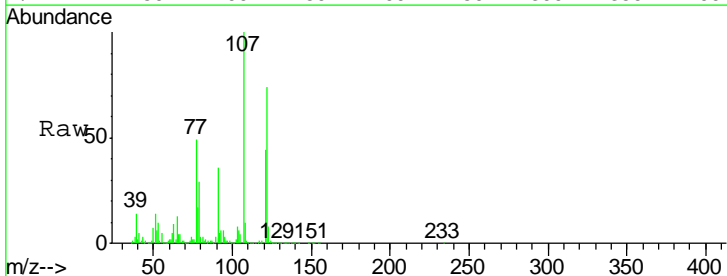
Ion	Ratio	Lower	Upper
107	100		
121	2.5	33.0	49.4#
122	34.5	54.2	81.2#



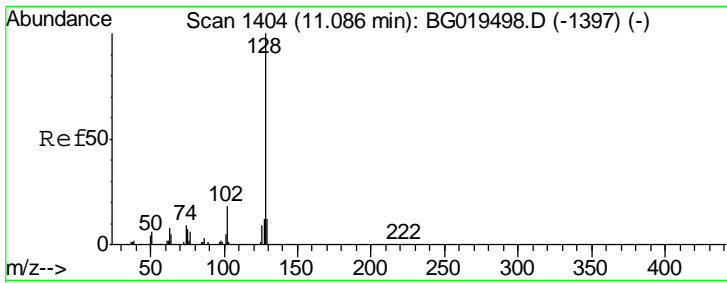
#25  
 Bis(2-Chloroethoxy)methane  
 Concen: 37.45 ng/ul  
 RT: 10.26 min Scan# 1263  
 Delta R.T. -0.16 min  
 Lab File: BG019402.D  
 Acq: 29 Oct 2015 4:42

Tgt Ion: 93 Resp: 186537

Ion	Ratio	Lower	Upper
93	100		
95	44.8	26.1	39.1#
123	122.7	8.2	12.2#



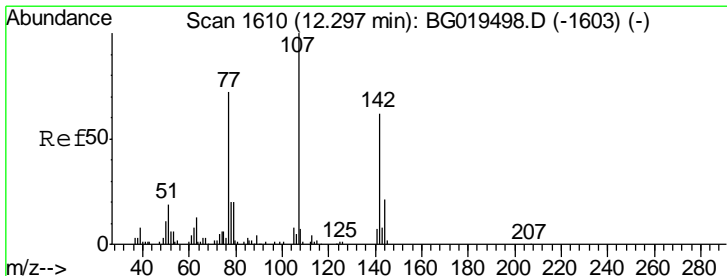
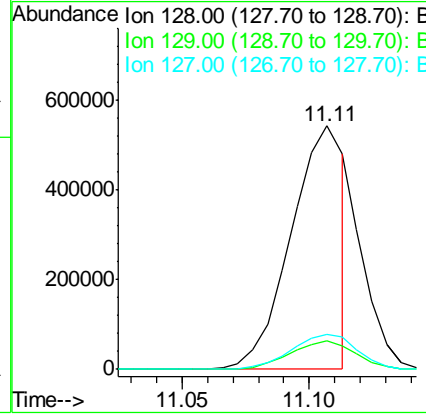
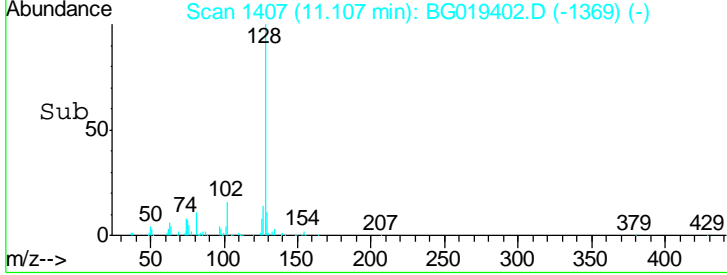
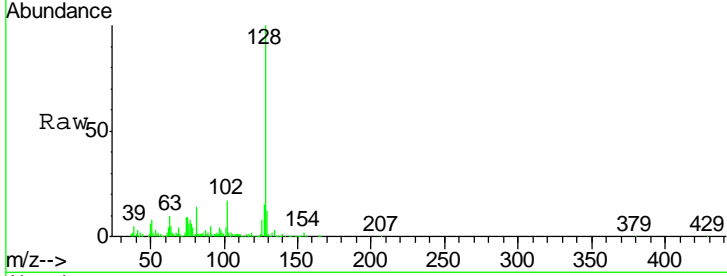




#28  
 Naphthalene  
 Concen: 78.53 ng/ul  
 RT: 11.11 min Scan# 1407  
 Delta R.T. 0.02 min  
 Lab File: BG019402.D  
 Acq: 29 Oct 2015 4:42

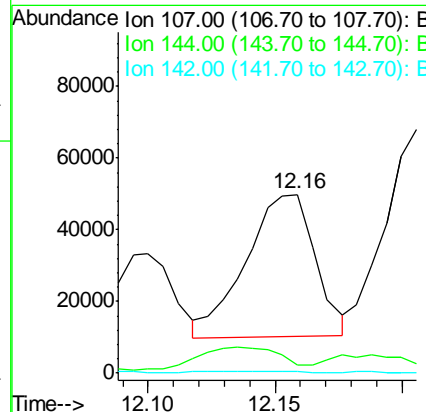
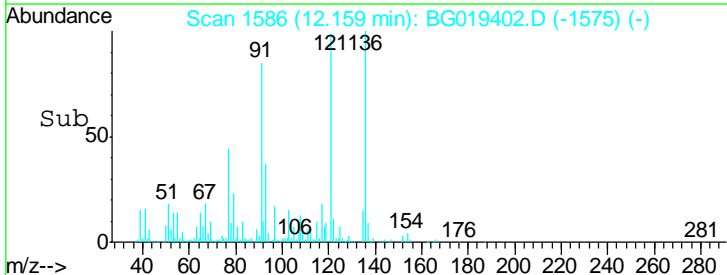
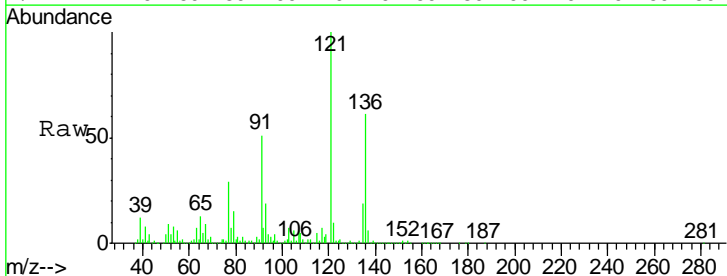
Instrument :  
 BNA\_G  
 ClientSampled :  
 E5LS6

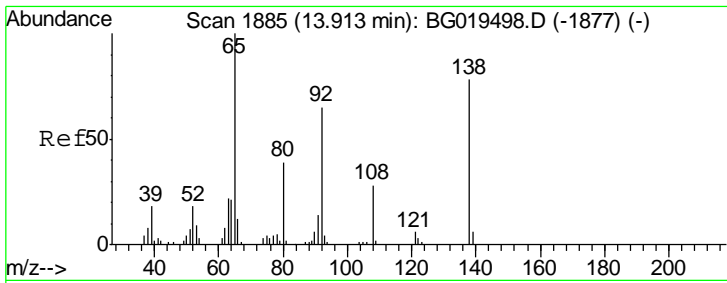
Tgt Ion	Resp	Lower	Upper
128	794412		
129	11.6	8.9	13.3
127	14.6	13.1	19.7



#33  
 4-Chloro-3-methylphenol  
 Concen: 15.37 ng/ul  
 RT: 12.16 min Scan# 1586  
 Delta R.T. -0.14 min  
 Lab File: BG019402.D  
 Acq: 29 Oct 2015 4:42

Tgt Ion	Resp	Lower	Upper
107	75424		
144	4.3	13.0	19.6#
142	1.2	47.0	70.6#

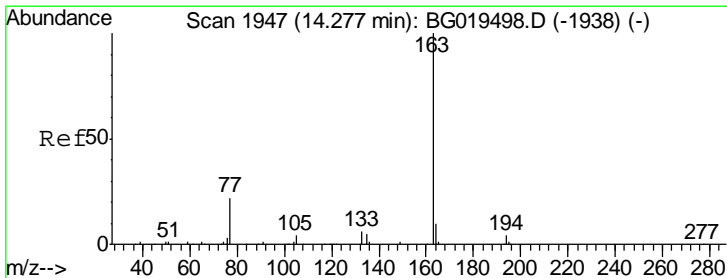
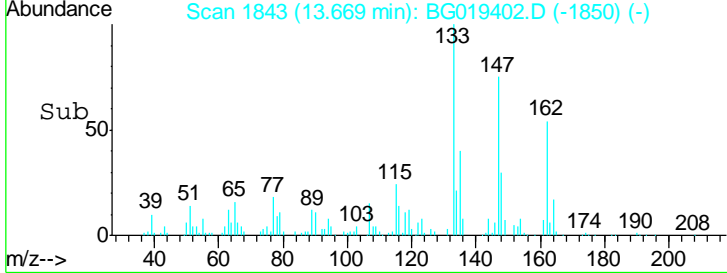
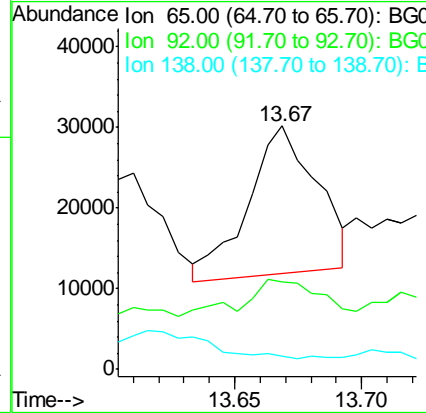
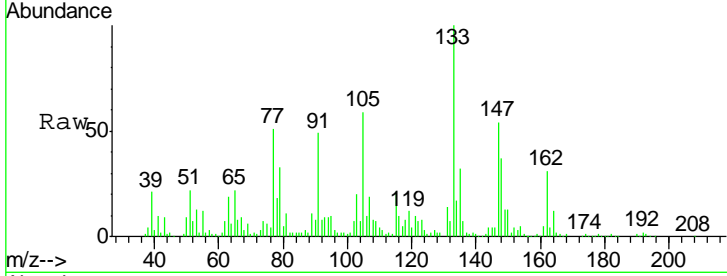




#43  
 2-Nitroaniline  
 Concen: 38.75 ng/ul  
 RT: 13.67 min Scan# 1843  
 Delta R.T. -0.24 min  
 Lab File: BG019402.D  
 Acq: 29 Oct 2015 4:42

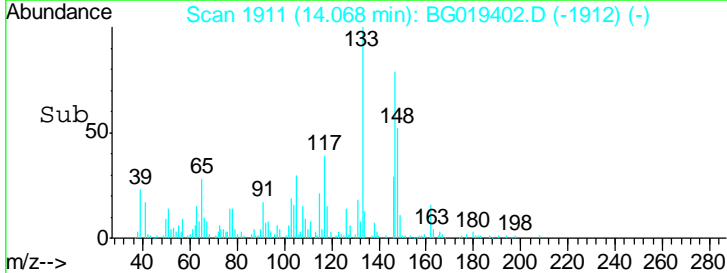
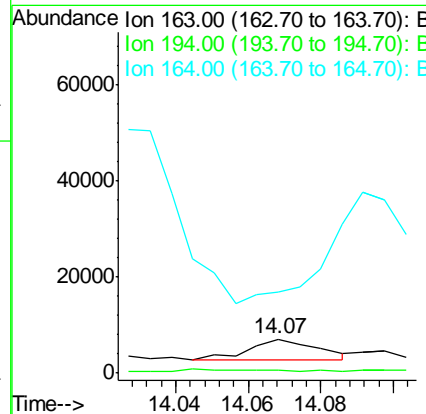
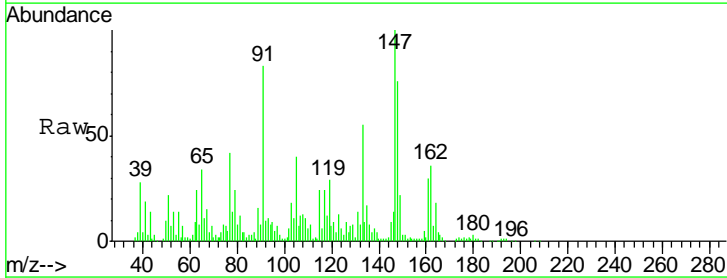
Instrument :  
 BNA\_G  
 ClientSampled :  
 E5LS6

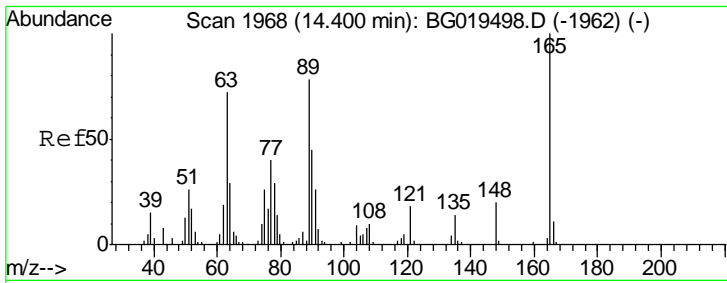
Tgt Ion	Resp	Lower	Upper
65	100		
92	35.7	54.9	82.3#
138	5.2	64.4	96.6#



#45  
 Dimethylphthalate  
 Concen: 1.78 ng/ul  
 RT: 14.07 min Scan# 1911  
 Delta R.T. -0.21 min  
 Lab File: BG019402.D  
 Acq: 29 Oct 2015 4:42

Tgt Ion	Resp	Lower	Upper
163	100		
194	7.9	4.3	6.5#
164	238.5	7.5	11.3#

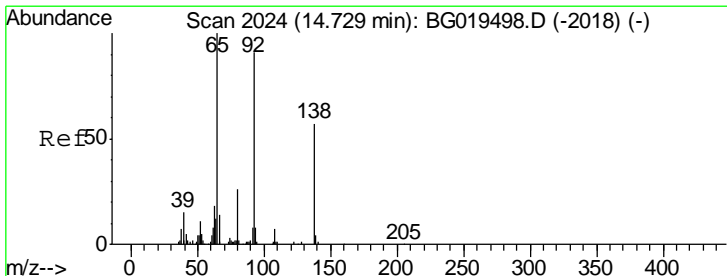
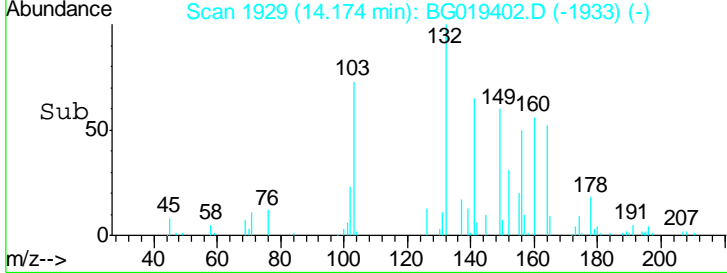
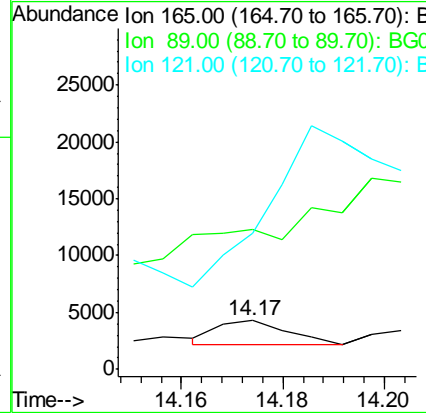
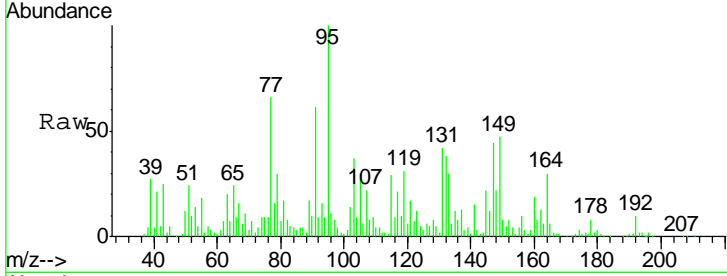




#46  
 2,6-Dinitrotoluene  
 Concen: 3.31 ng/ul  
 RT: 14.17 min Scan# 1929  
 Delta R.T. -0.23 min  
 Lab File: BG019402.D  
 Acq: 29 Oct 2015 4:42

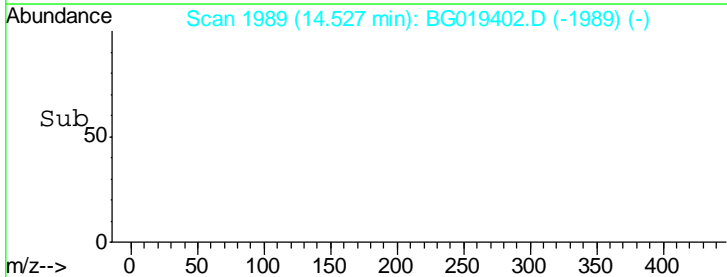
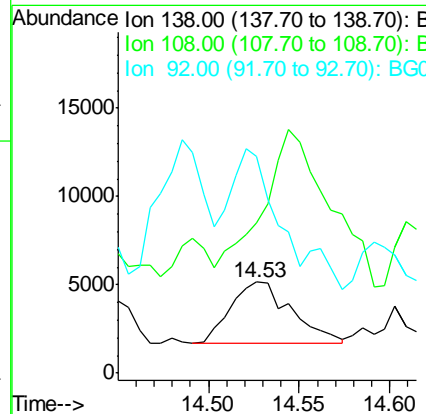
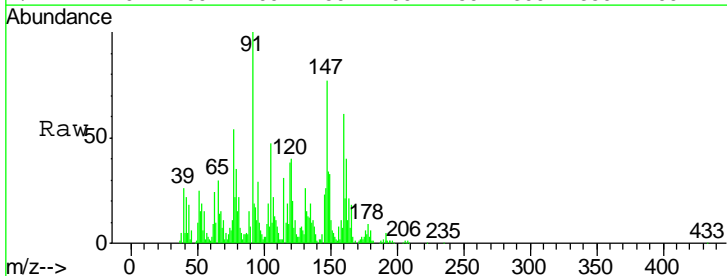
Instrument :  
 BNA\_G  
 ClientSampled :  
 E5LS6

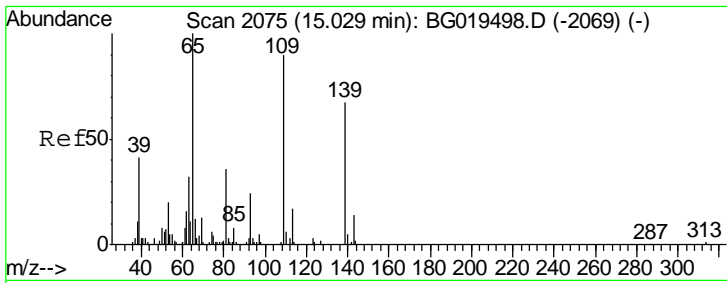
Tgt Ion	Resp	Lower	Upper
165	100		
89	286.2	66.7	100.1#
121	277.8	17.0	25.4#



#49  
 3-Nitroaniline  
 Concen: 14.34 ng/ul  
 RT: 14.53 min Scan# 1989  
 Delta R.T. -0.20 min  
 Lab File: BG019402.D  
 Acq: 29 Oct 2015 4:42

Tgt Ion	Resp	Lower	Upper
138	100		
108	165.4	11.7	17.5#
92	238.1	115.9	173.9#

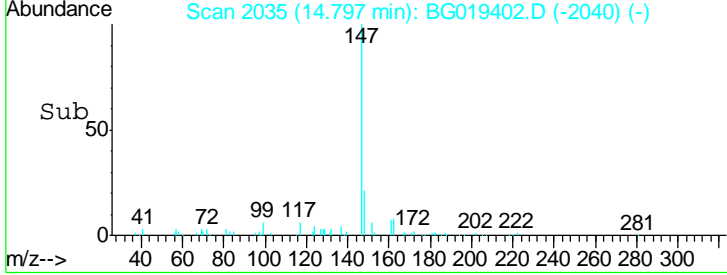
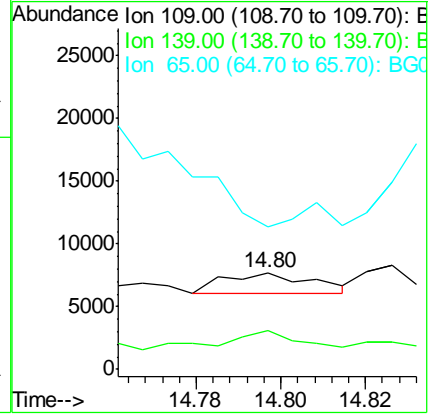
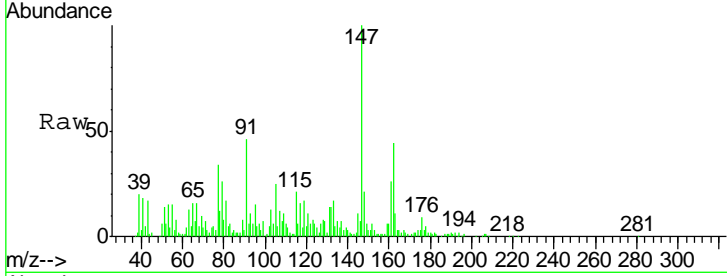




#53  
 4-Nitrophenol  
 Concen: 3.06 ng/ul  
 RT: 14.80 min Scan# 2035  
 Delta R.T. -0.23 min  
 Lab File: BG019402.D  
 Acq: 29 Oct 2015 4:42

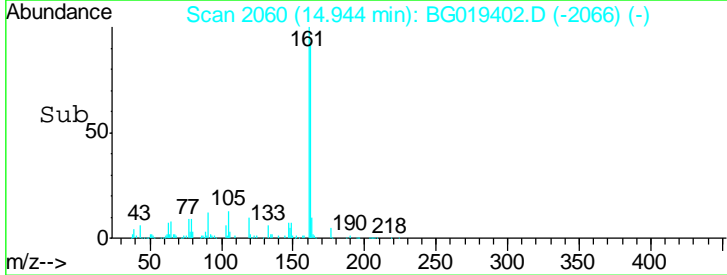
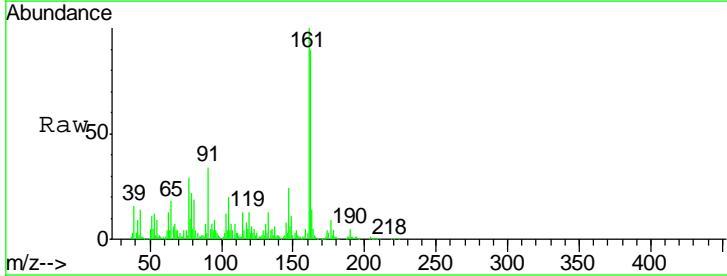
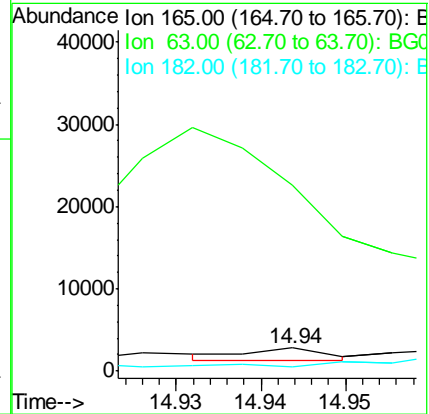
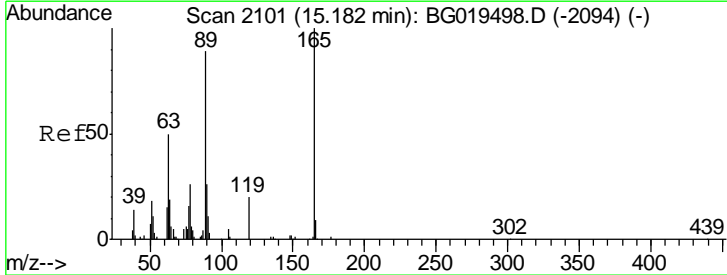
Instrument :  
 BNA\_G  
 ClientSampled :  
 E5LS6

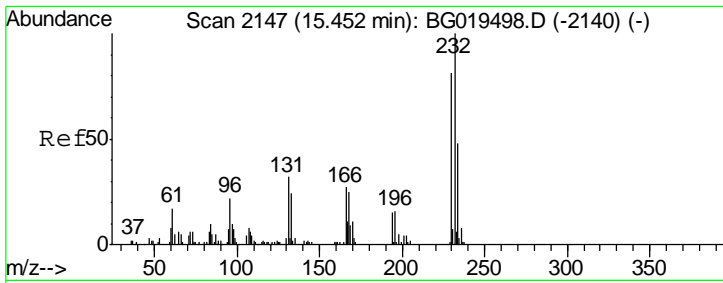
Tgt Ion	Resp	Lower	Upper
109	100		
139	39.5	41.5	62.3#
65	146.5	73.7	110.5#



#55  
 2,4-Dinitrotoluene  
 Concen: 1.04 ng/ul  
 RT: 14.94 min Scan# 2060  
 Delta R.T. -0.24 min  
 Lab File: BG019402.D  
 Acq: 29 Oct 2015 4:42

Tgt Ion	Resp	Lower	Upper
165	100		
63	796.6	51.1	76.7#
182	16.3	3.3	4.9#

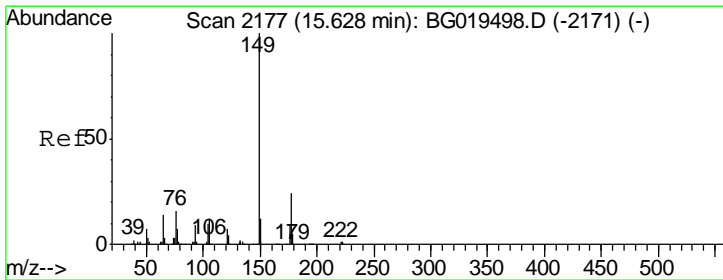
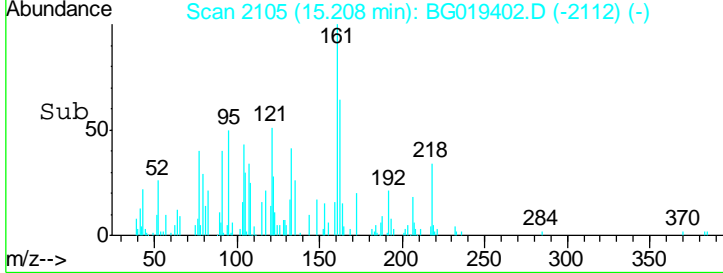
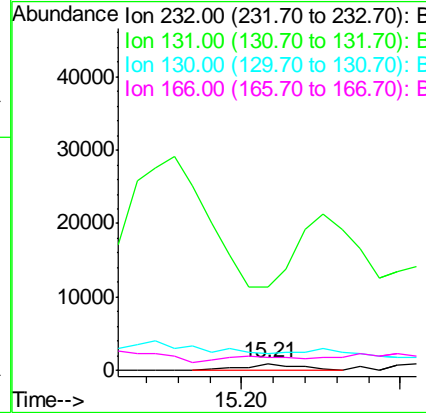
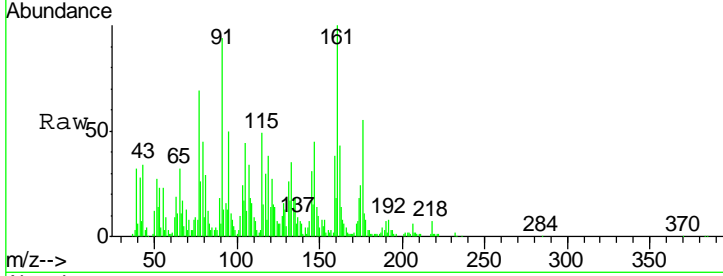




#56  
 2,3,4,6-Tetrachlorophenol  
 Concen: 1.06 ng/ul  
 RT: 15.21 min Scan# 2105  
 Delta R.T. -0.24 min  
 Lab File: BG019402.D  
 Acq: 29 Oct 2015 4:42

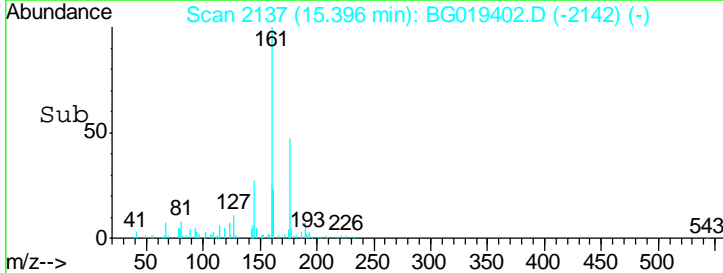
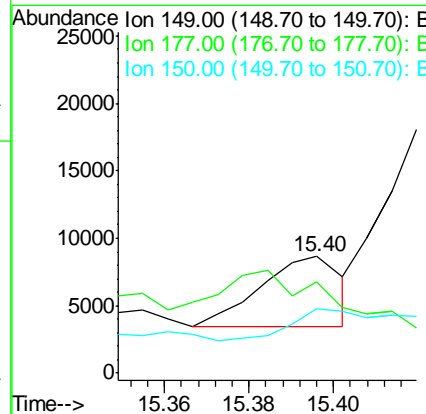
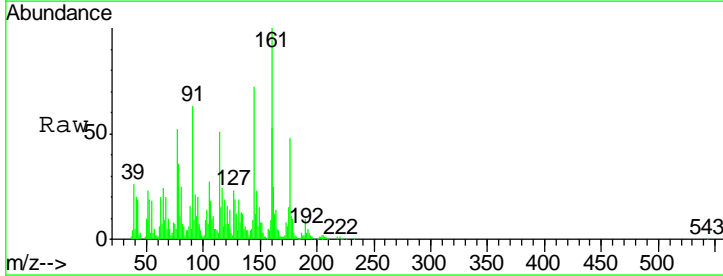
Instrument :  
 BNA\_G  
 ClientSampled :  
 E5LS6

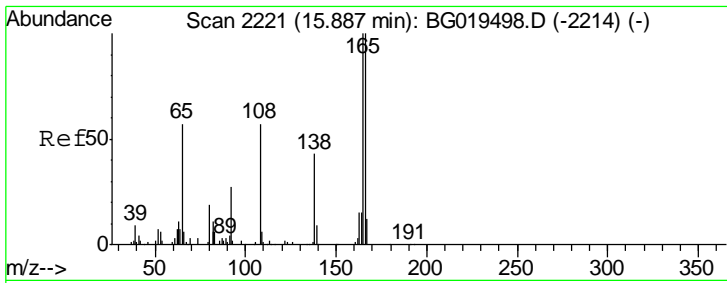
Tgt Ion	Resp	Lower	Upper
232	1128		
131	1198.5	28.1	42.1#
130	241.3	2.2	3.2#
166	184.5	19.0	28.6#



#57  
 Diethylphthalate  
 Concen: 2.19 ng/ul  
 RT: 15.40 min Scan# 2137  
 Delta R.T. -0.23 min  
 Lab File: BG019402.D  
 Acq: 29 Oct 2015 4:42

Tgt Ion	Resp	Lower	Upper
149	6919		
177	78.4	20.6	30.8#
150	54.9	11.2	16.8#

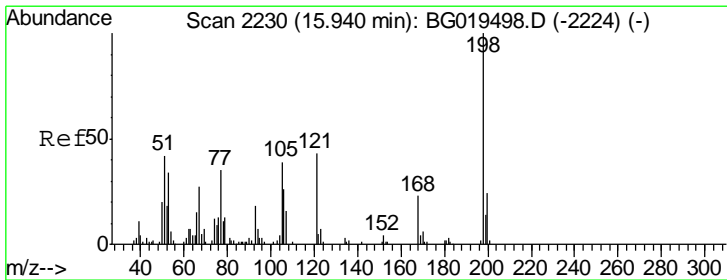
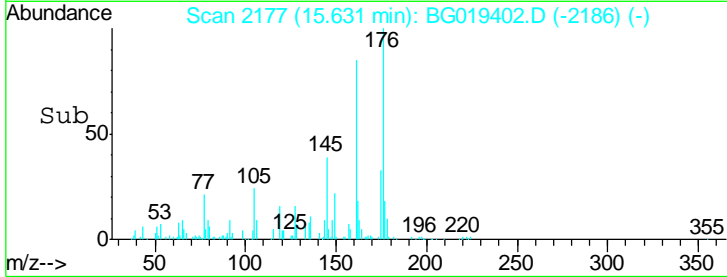
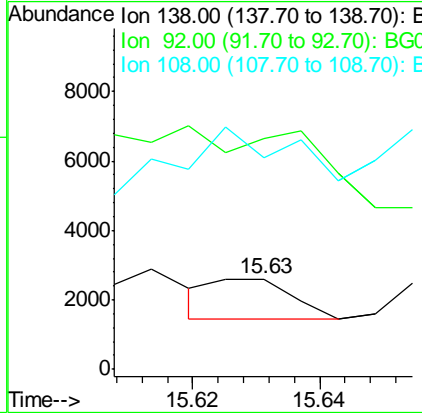
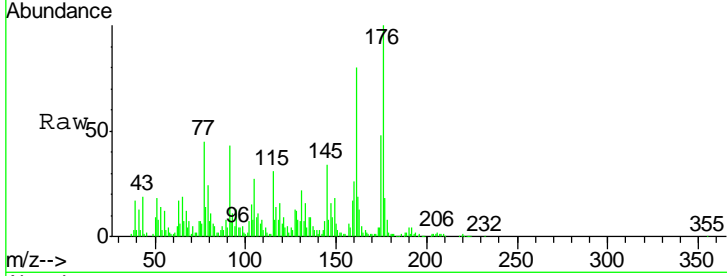




#61  
 4-Nitroaniline  
 Concen: 1.50 ng/ul  
 RT: 15.63 min Scan# 2177  
 Delta R.T. -0.26 min  
 Lab File: BG019402.D  
 Acq: 29 Oct 2015 4:42

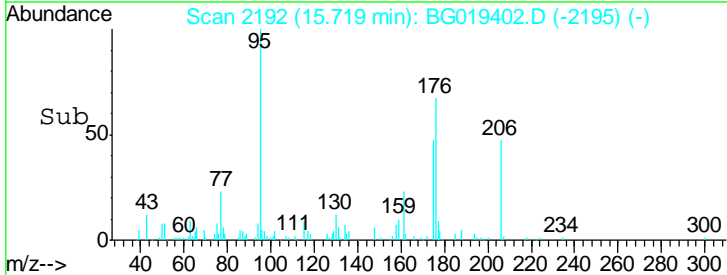
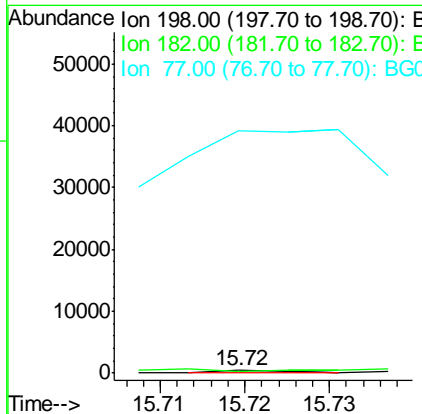
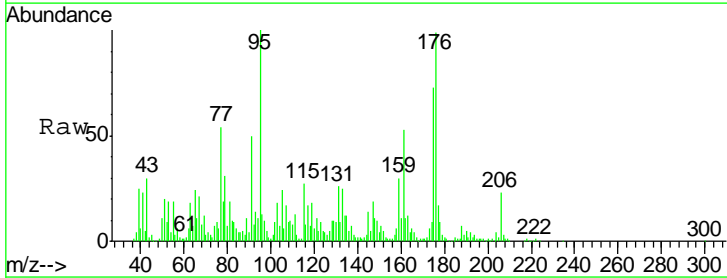
Instrument :  
 BNA\_G  
 ClientSampled :  
 E5LS6

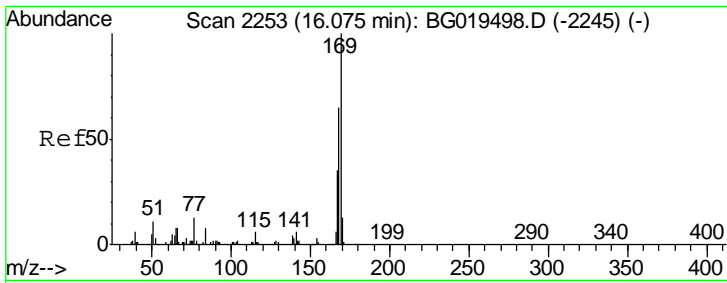
Tgt Ion	Resp	Lower	Upper
138	100		
92	255.5	53.9	80.9#
108	234.8	122.5	183.7#



#64  
 4,6-Dinitro-2-methylphenol  
 Concen: 32.50 ng/ul  
 RT: 15.72 min Scan# 2192  
 Delta R.T. -0.22 min  
 Lab File: BG019402.D  
 Acq: 29 Oct 2015 4:42

Tgt Ion	Resp	Lower	Upper
198	100		
182	69.5	2.0	3.0#
77	8676.4	23.2	34.8#

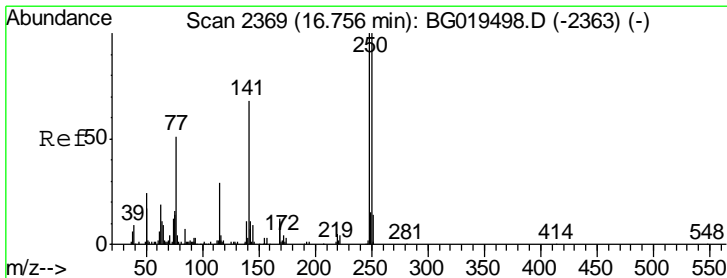
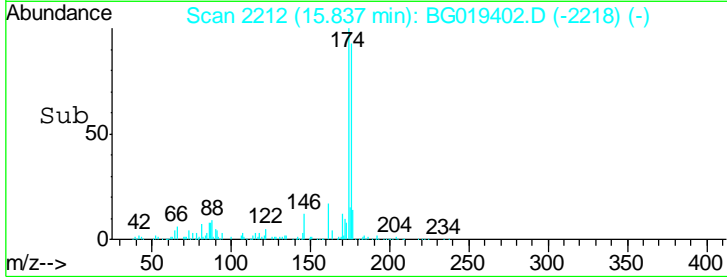
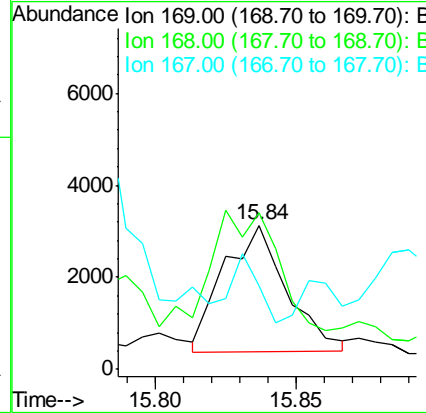
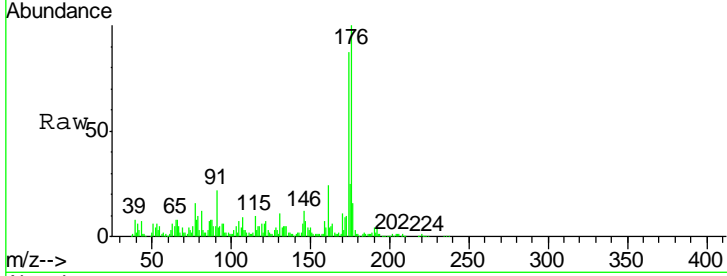




#65  
 N-Nitrosodiphenylamine  
 Concen: 133.17 ng/ul  
 RT: 15.84 min Scan# 2212  
 Delta R.T. -0.24 min  
 Lab File: BG019402.D  
 Acq: 29 Oct 2015 4:42

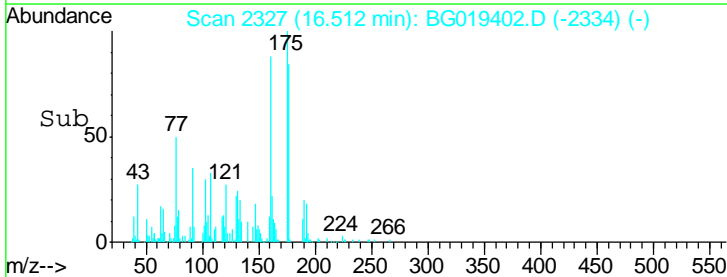
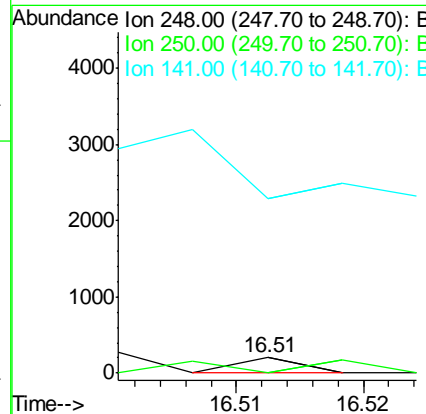
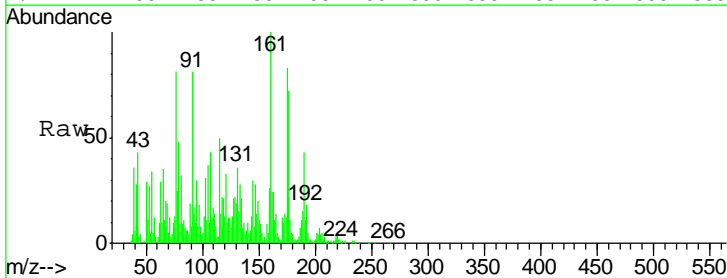
Instrument :  
 BNA\_G  
 ClientSampled :  
 E5LS6

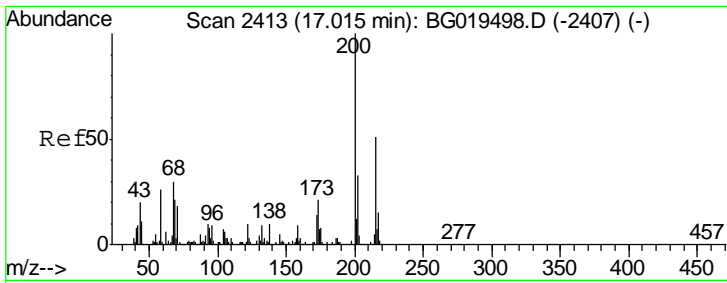
Tgt Ion	Resp	Lower	Upper
169	100		
168	108.6	51.1	76.7#
167	58.1	26.9	40.3#



#66  
 4-Bromophenyl-phenylether  
 Concen: 4.80 ng/ul  
 RT: 16.51 min Scan# 2327  
 Delta R.T. -0.24 min  
 Lab File: BG019402.D  
 Acq: 29 Oct 2015 4:42

Tgt Ion	Resp	Lower	Upper
248	100		
250	0.0	77.4	116.0#
141	1141.5	52.3	78.5#

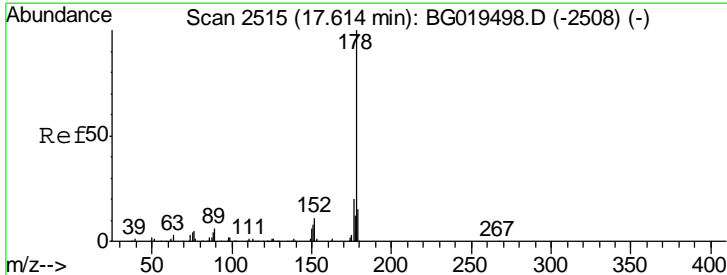
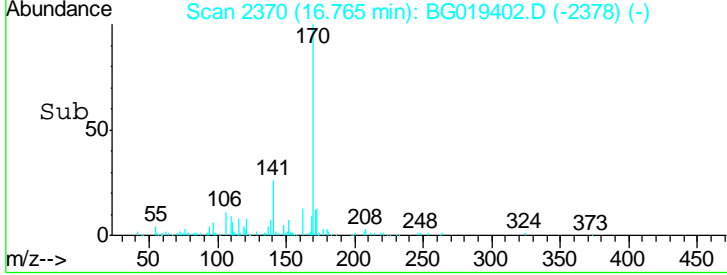
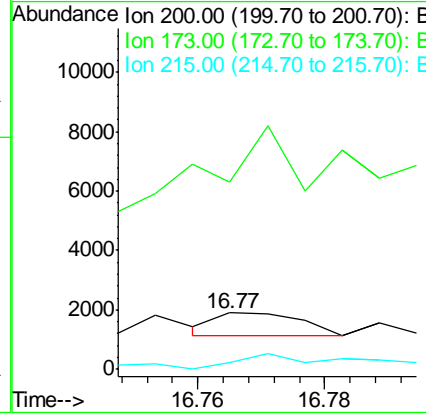
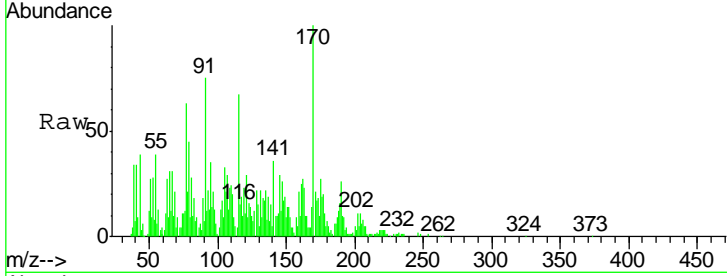




#68  
 Atrazine  
 Concen: 43.83 ng/ul  
 RT: 16.77 min Scan# 2370  
 Delta R.T. -0.25 min  
 Lab File: BG019402.D  
 Acq: 29 Oct 2015 4:42

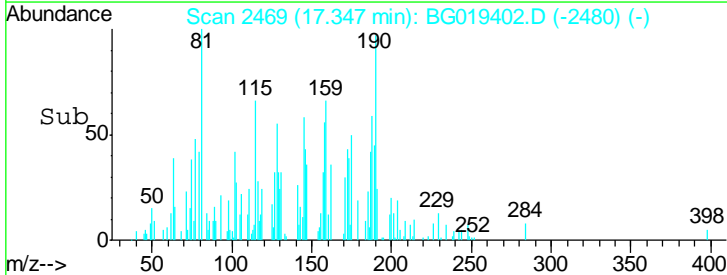
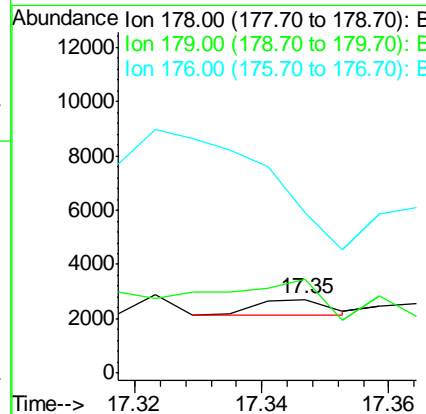
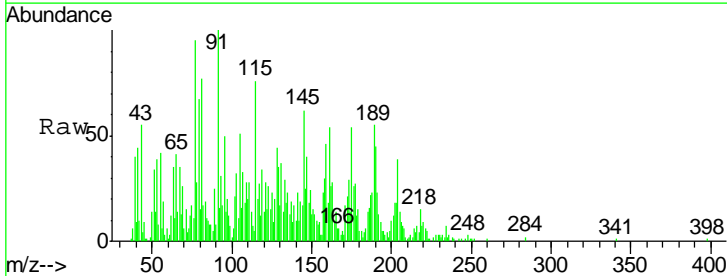
Instrument :  
 BNA\_G  
 ClientSampled :  
 E5LS6

Tgt Ion	Resp	Lower	Upper
200	100		
173	330.9	16.9	25.3#
215	12.4	41.0	61.6#

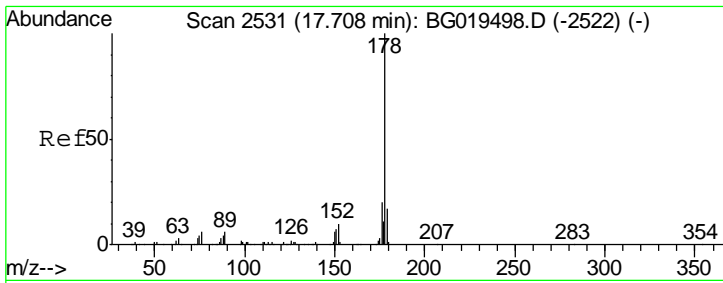


#70  
 Phenanthrene  
 Concen: 6.75 ng/ul  
 RT: 17.35 min Scan# 2469  
 Delta R.T. -0.27 min  
 Lab File: BG019402.D  
 Acq: 29 Oct 2015 4:42

Tgt Ion	Resp	Lower	Upper
178	100		
179	126.6	12.6	18.8#
176	216.6	14.3	21.5#



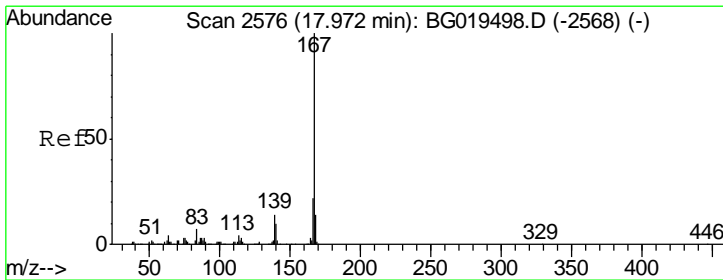
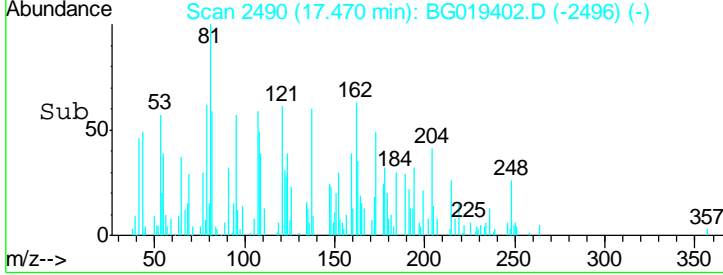
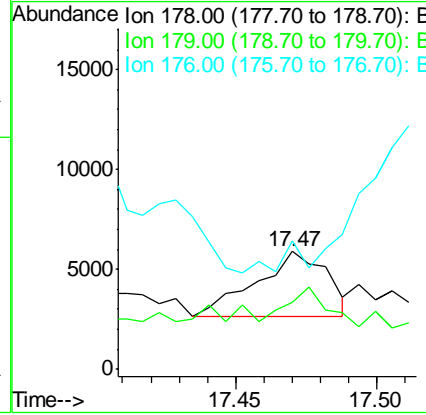
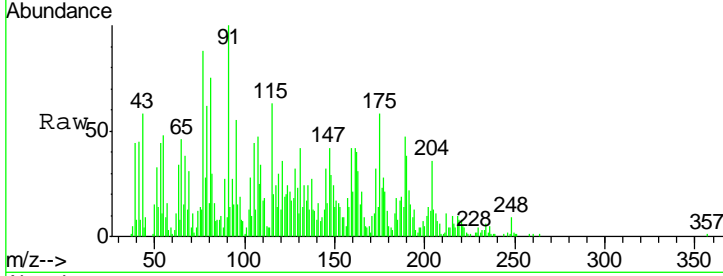




#72  
 Anthracene  
 Concen: 89.27 ng/ul  
 RT: 17.47 min Scan# 2490  
 Delta R.T. -0.24 min  
 Lab File: BG019402.D  
 Acq: 29 Oct 2015 4:42

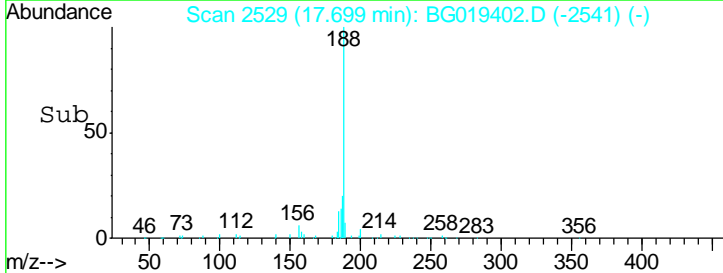
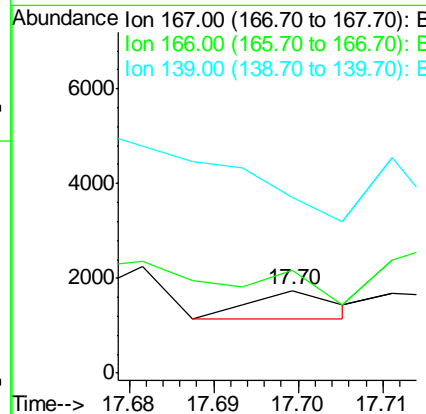
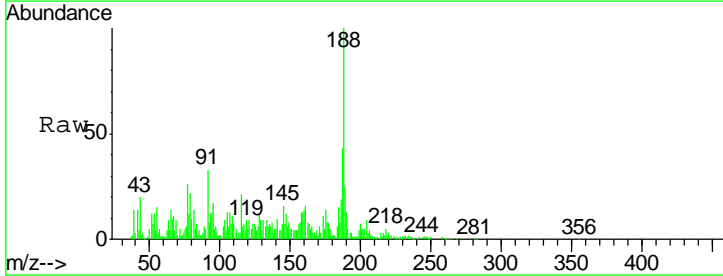
Instrument :  
 BNA\_G  
 ClientSampled :  
 E5LS6

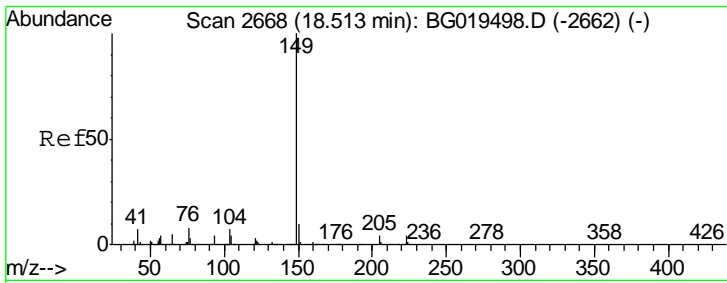
Tgt Ion	Resp	Lower	Upper
178	5713		
179	56.4	11.6	17.4#
176	109.4	14.2	21.4#



#75  
 Carbazole  
 Concen: 8.24 ng/ul  
 RT: 17.70 min Scan# 2529  
 Delta R.T. -0.27 min  
 Lab File: BG019402.D  
 Acq: 29 Oct 2015 4:42

Tgt Ion	Resp	Lower	Upper
167	421		
166	124.8	16.8	25.2#
139	212.3	9.8	14.6#

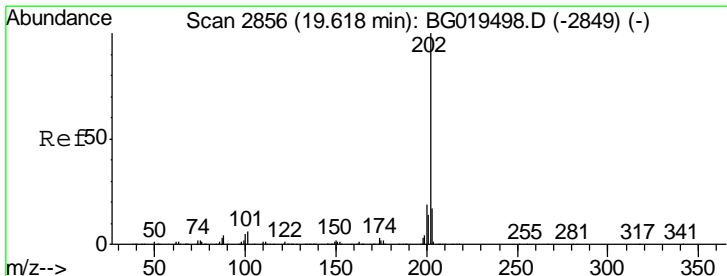
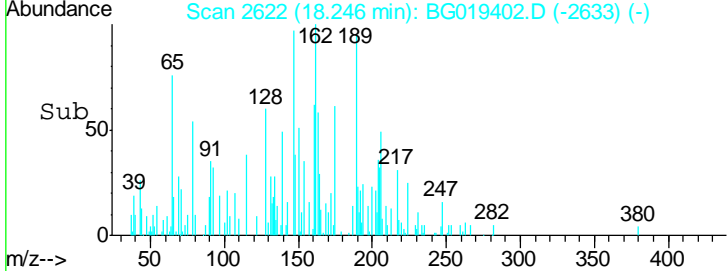
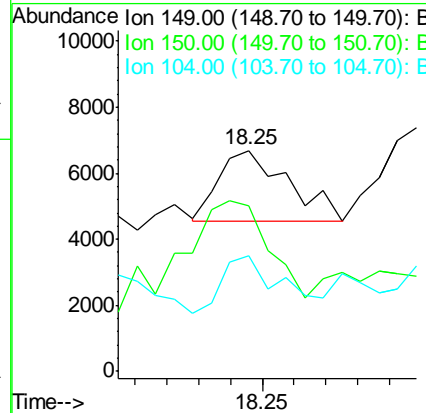
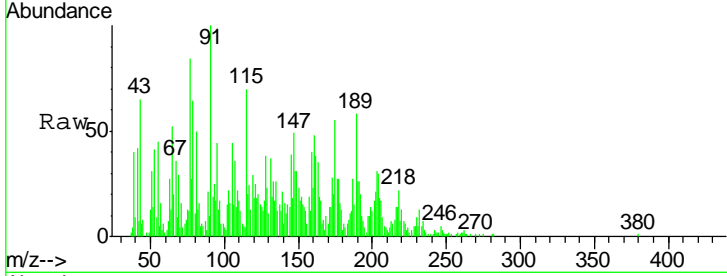




#76  
 Di-n-butylphthalate  
 Concen: 51.06 ng/ul  
 RT: 18.25 min Scan# 2622  
 Delta R.T. -0.27 min  
 Lab File: BG019402.D  
 Acq: 29 Oct 2015 4:42

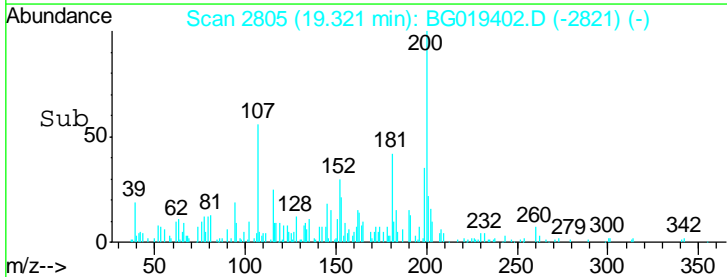
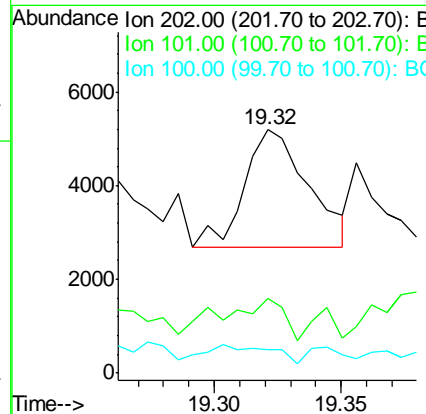
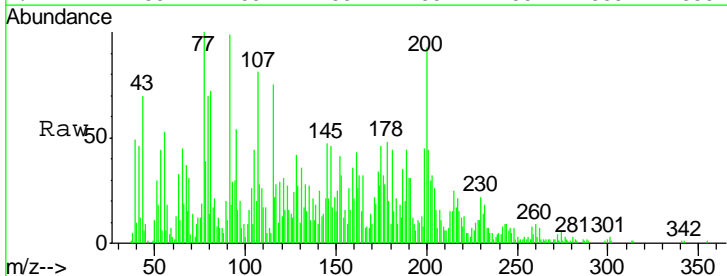
Instrument :  
 BNA\_G  
 ClientSampled :  
 E5LS6

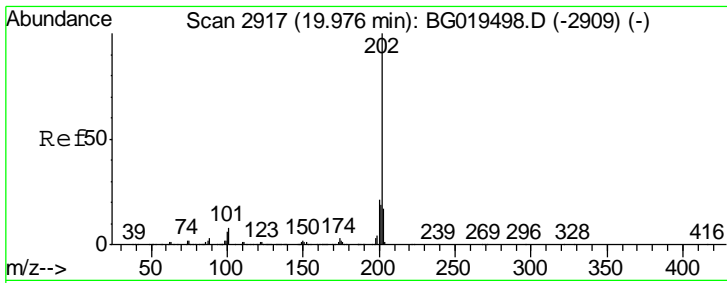
Tgt Ion	Resp	Lower	Upper
149	100		
150	75.3	7.5	11.3#
104	52.7	6.9	10.3#



#77  
 Fluoranthene  
 Concen: 54.38 ng/ul  
 RT: 19.32 min Scan# 2805  
 Delta R.T. -0.30 min  
 Lab File: BG019402.D  
 Acq: 29 Oct 2015 4:42

Tgt Ion	Resp	Lower	Upper
202	100		
101	30.8	4.0	6.0#
100	9.8	3.6	5.4#

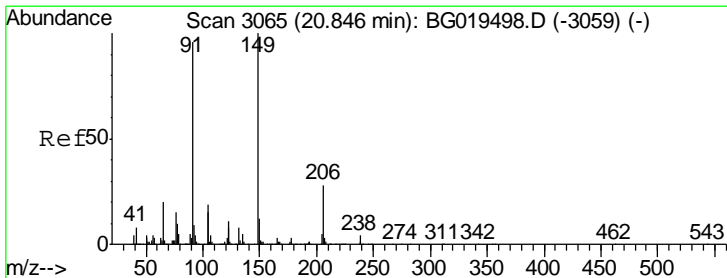
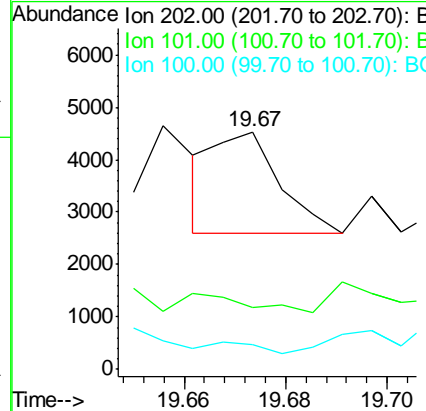
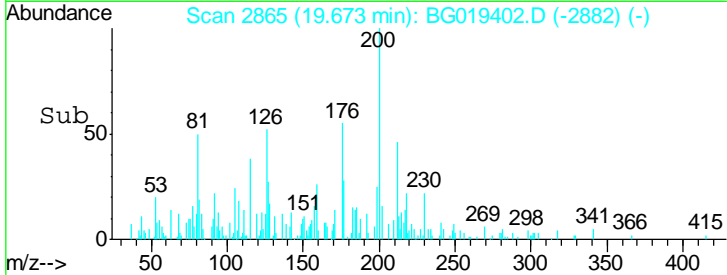
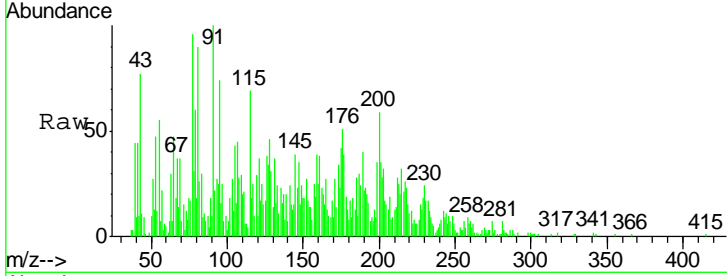




#80  
 Pyrene  
 Concen: 35.62 ng/ul  
 RT: 19.67 min Scan# 2865  
 Delta R.T. -0.30 min  
 Lab File: BG019402.D  
 Acq: 29 Oct 2015 4:42

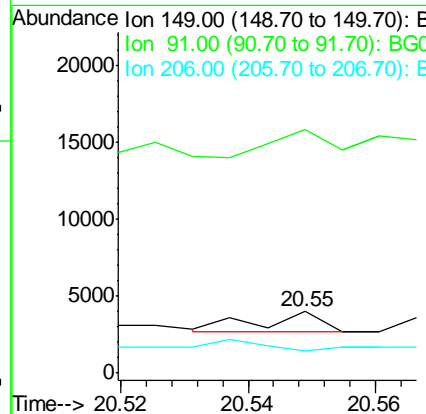
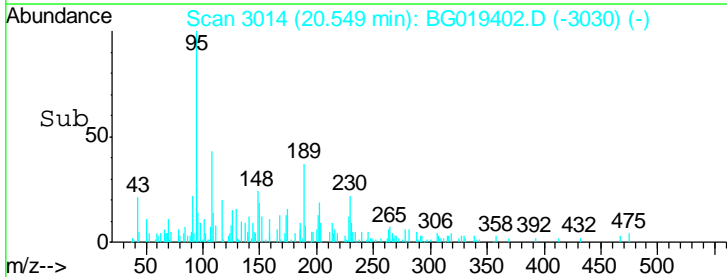
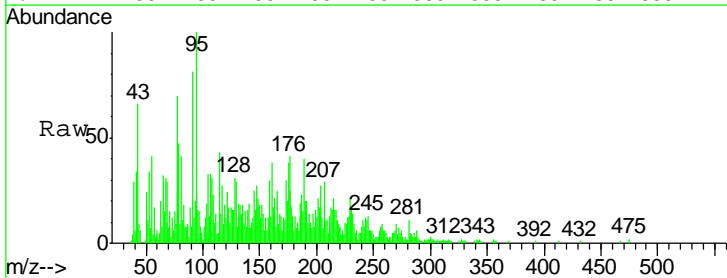
Instrument :  
 BNA\_G  
 ClientSampled :  
 E5LS6

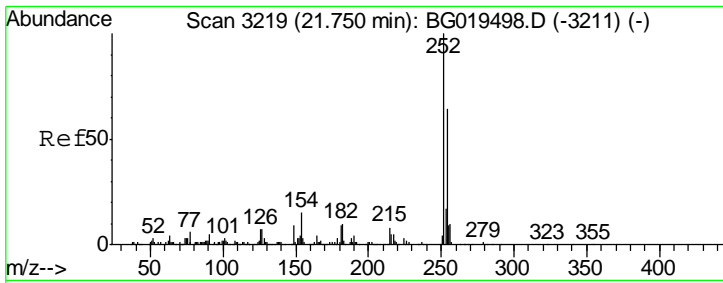
Tgt Ion	Ratio	Lower	Upper
202	100		
101	26.2	4.3	6.5#
100	10.6	3.6	5.4#



#81  
 Butylbenzylphthalate  
 Concen: 57.39 ng/ul  
 RT: 20.55 min Scan# 3014  
 Delta R.T. -0.30 min  
 Lab File: BG019402.D  
 Acq: 29 Oct 2015 4:42

Tgt Ion	Ratio	Lower	Upper
149	100		
91	394.1	76.5	114.7#
206	35.5	22.1	33.1#

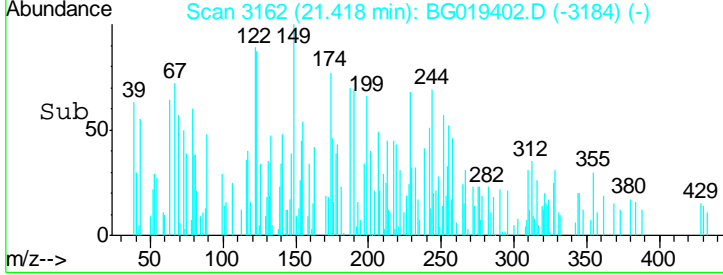
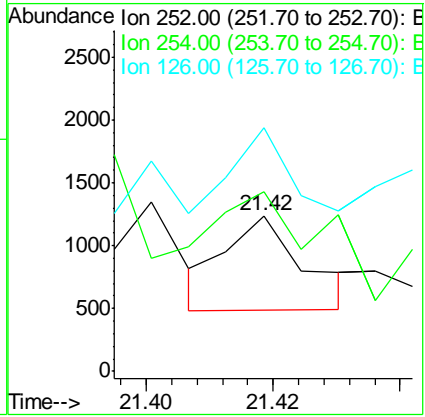
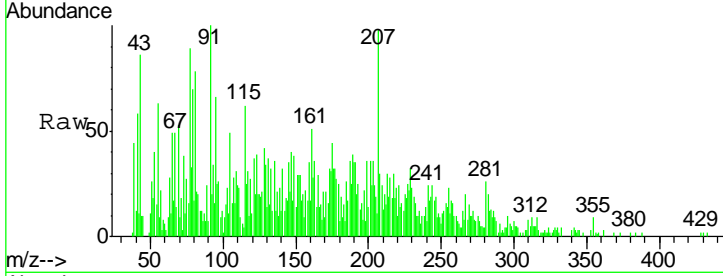




#82  
 3,3'-Dichlorobenzidine  
 Concen: 38.22 ng/ul  
 RT: 21.42 min Scan# 3162  
 Delta R.T. -0.33 min  
 Lab File: BG019402.D  
 Acq: 29 Oct 2015 4:42

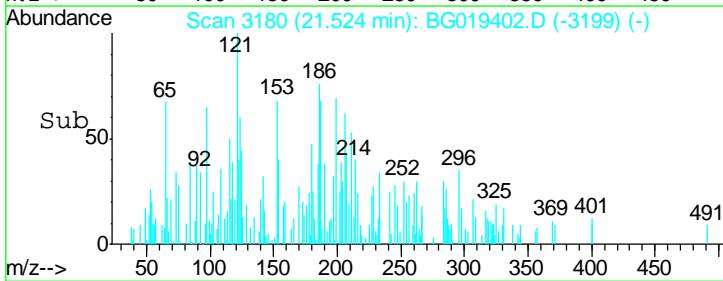
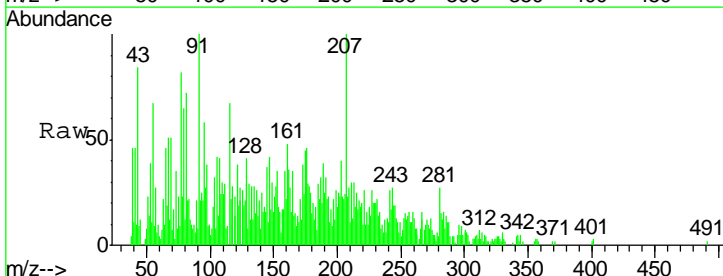
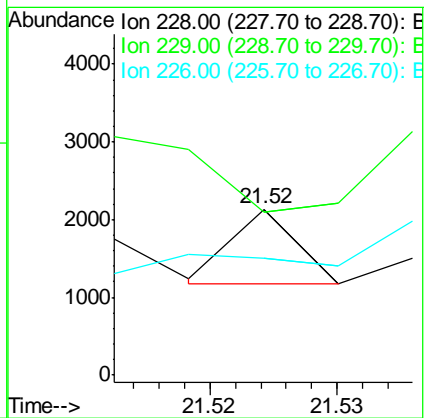
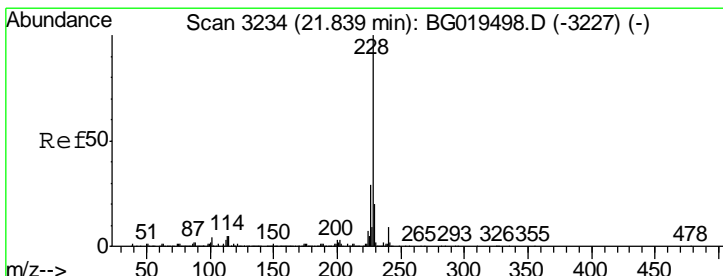
Instrument :  
 BNA\_G  
 ClientSampled :  
 E5LS6

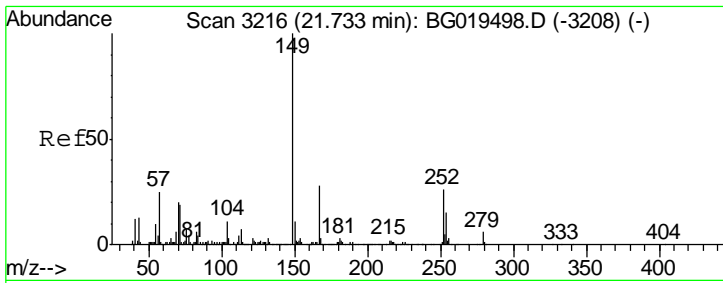
Tgt Ion	Resp	Lower	Upper
252	100		
254	115.1	49.2	73.8#
126	156.2	4.3	6.5#



#83  
 Benzo(a)anthracene  
 Concen: 6.76 ng/ul  
 RT: 21.52 min Scan# 3180  
 Delta R.T. -0.31 min  
 Lab File: BG019402.D  
 Acq: 29 Oct 2015 4:42

Tgt Ion	Resp	Lower	Upper
228	100		
229	98.1	15.8	23.8#
226	70.9	21.8	32.6#

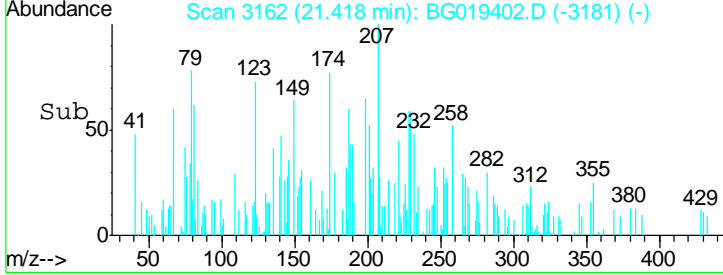
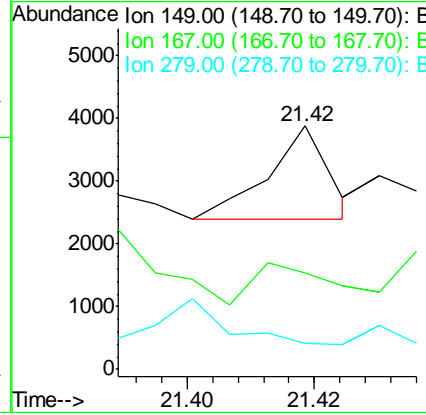
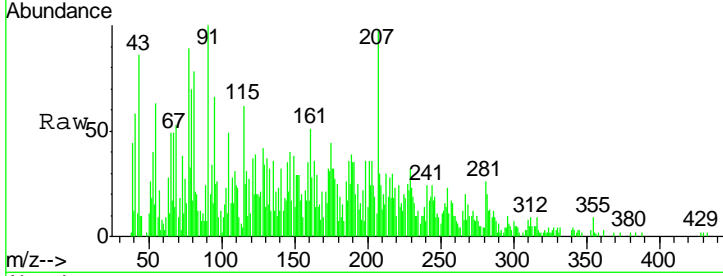




#84  
 Bis(2-ethylhexyl)phthalate  
 Concen: 44.63 ng/ul  
 RT: 21.42 min Scan# 3162  
 Delta R.T. -0.31 min  
 Lab File: BG019402.D  
 Acq: 29 Oct 2015 4:42

Instrument :  
 BNA\_G  
 Client Sampled :  
 E5LS6

Tgt Ion	Resp	Lower	Upper
149	100		
167	39.4	23.2	34.8#
279	10.7	5.0	7.4#



#85  
 Chrysene  
 Concen: 9.41 ng/ul  
 RT: 21.59 min Scan# 3191  
 Delta R.T. -0.32 min  
 Lab File: BG019402.D  
 Acq: 29 Oct 2015 4:42

Tgt Ion	Resp	Lower	Upper
228	100		
226	46.1	24.6	36.8#
229	118.9	17.3	25.9#

