

Data Path : Z:\HPCHEM1\BNA G\DATA\BG102815\
 Data File : BG019401.D
 Acq On : 29 Oct 2015 4:03
 Operator : UM/NP
 Sample : G4120-16
 Misc :
 ALS Vial : 22 Sample Multiplier: 1

Instrument :
 BNA_G
 ClientSampled :
 E5LS4

Manual Integrations
 APPROVED

Mmdadoda
 10/30/2015 6:32:11 PM

Quant Time: Nov 02 03:50:34 2015
 Quant Method : Z:\HPCHEM1\BNA G\METHODS\SOM02.2-EPA-BG102815.M
 Quant Title : SVOA CALIBRATION
 QLast Update : Thu Oct 29 04:26:00 2015
 Response via : Initial Calibration

Internal Standards	R.T.	QIon	Response	Conc	Units	Dev(Min)
1) 1,4-Dichlorobenzene-d4	8.21	152	44032	20.00	ng/ul	0.00
18) Naphthalene-d8	11.05	136	186728m	20.00	ng/ul	0.01
36) Acenaphthene-d10	14.84	164	174750m	20.00	ng/ul	0.00
62) Phenanthrene-d10	17.58	188	366232m	20.00	ng/ul	0.00
78) Chrysene-d12	21.87	240	446017m	20.00	ng/ul	0.00
86) Perylene-d12	25.24	264	419556m	20.00	ng/ul	0.00

System Monitoring Compounds

3) 1,4-Dioxane-d8	3.51	96	8791	9.56	ng/uL	0.00
5) Phenol-d5	7.36	99	32878	8.13	ng/ul	0.01
7) Bis-(2-Chloroethyl)ether-d	7.52	67	83189	32.46	ng/ul	0.00
9) 2-Chlorophenol-d4	7.74	132	71176	28.21	ng/ul	0.00
13) 4-Methylphenol-d8	8.94	113	59783	18.57	ng/ul	0.03
19) Nitrobenzene-d5	9.39	128	46976	34.23	ng/ul	0.00
22) 2-Nitrophenol-d4	10.11	143	55030m	33.78	ng/ul	0.00
26) 2,4-Dichlorophenol-d3	10.67	165	108412m	30.68	ng/ul	0.02
29) 4-Chloroaniline-d4	11.20	131	20818m	5.82	ng/ul	0.03
44) Dimethylphthalate-d6	14.25	166	371749m	25.80	ng/ul	0.02
47) Acenaphthylene-d8	14.54	160	430805m	27.00	ng/ul	0.00
52) 4-Nitrophenol-d4	15.07	143	12718m	5.56	ng/ul	0.06
58) Fluorene-d10	15.83	176	406010m	30.46	ng/ul	0.00
63) 4,6-Dinitro-2-methylphenol	15.94	200	81044m	34.19	ng/ul	0.01
71) Anthracene-d10	17.68	188	545608m	32.68	ng/ul	0.00
79) Pyrene-d10	19.95	212	623760m	31.96	ng/ul	0.00
90) Benzo(a)pyrene-d12	25.01	264	685954m	32.58	ng/ul	0.00

Target Compounds

Target Compounds	R.T.	QIon	Response	Conc	Units	Ovalue
6) Phenol	7.39	94	240438	55.84	ng/ul	98
11) 2-Methylphenol	8.67	108	681525	214.01	ng/ul	97
16) 4-Methylphenol	9.04	108	2850938	819.82	ng/ul	95
24) 2,4-Dimethylphenol	10.26	107	3095823m	640.55	ng/ul	
28) Naphthalene	11.10	128	865787m	92.67	ng/ul	
34) 2-Methylnaphthalene	12.69	142	110011m	14.65	ng/ul	
41) 1,1'-Biphenyl	13.68	154	30656m	2.48	ng/ul	
48) Acenaphthylene	14.57	152	22510m	1.38	ng/ul	
54) Dibenzofuran	15.24	168	22008m	1.35	ng/ul	

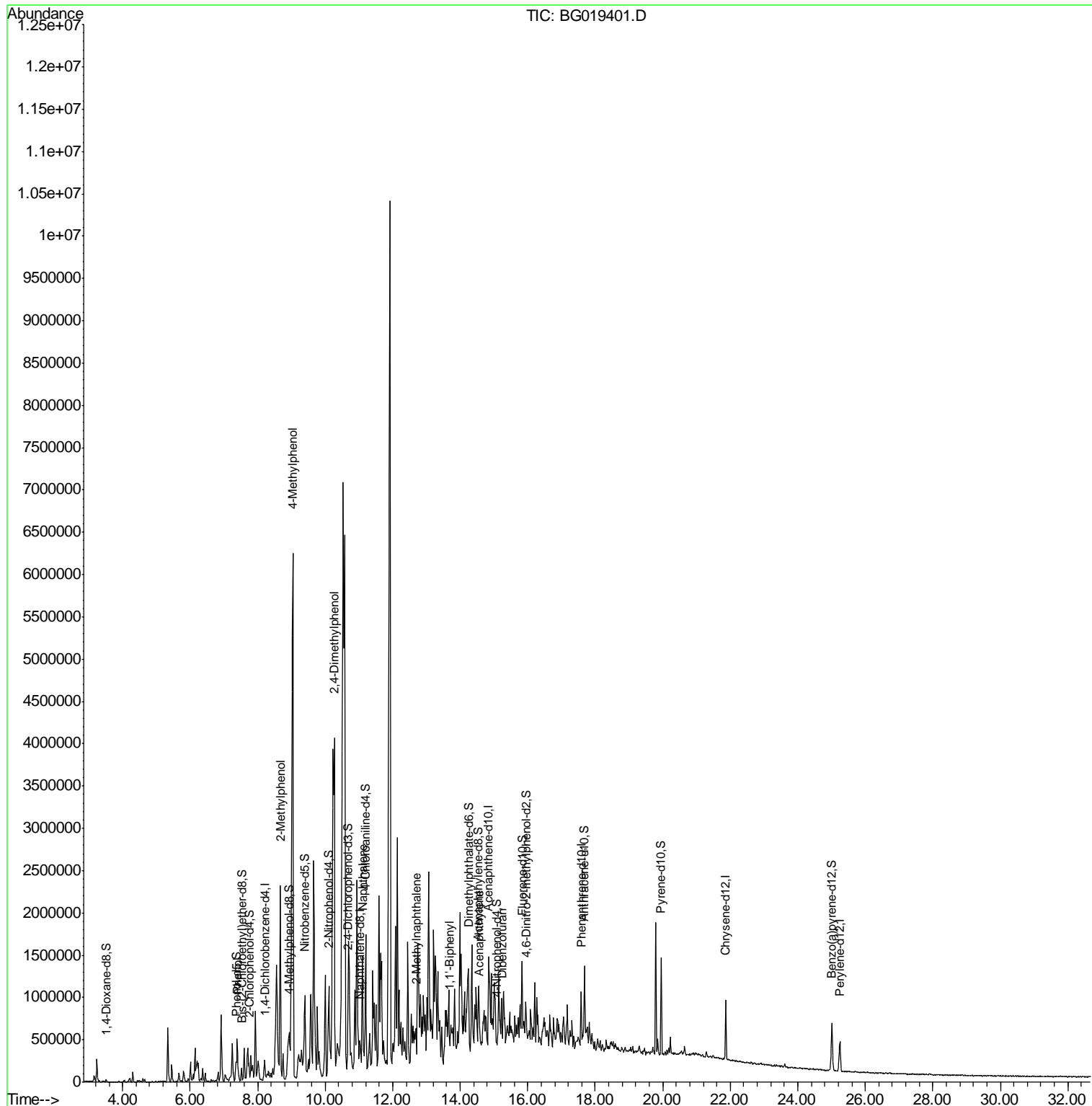
(#) = qualifier out of range (m) = manual integration (+) = signals summed

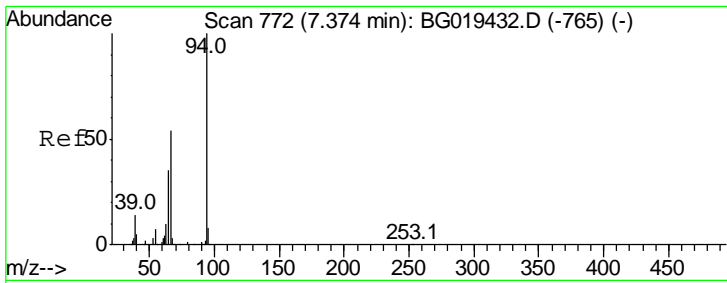
Data Path : Z:\HPCHEM1\BNA G\DATA\BG102815\
 Data File : BG019401.D
 Acq On : 29 Oct 2015 4:03
 Operator : UM/NP
 Sample : G4120-16
 Misc :
 ALS Vial : 22 Sample Multiplier: 1

Instrument :
 BNA_G
 Client Sampled :
 E5LS4

Manual Integrations
 APPROVED
 Mmdadoda
 10/30/2015 6:32:11 PM

Quant Time: Nov 02 03:50:34 2015
 Quant Method : Z:\HPCHEM1\BNA G\METHODS\SOM02.2-EPA-BG102815.M
 Quant Title : SVOA CALIBRATION
 QLast Update : Thu Oct 29 04:26:00 2015
 Response via : Initial Calibration



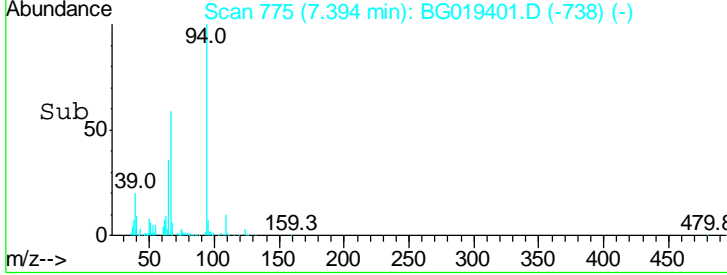
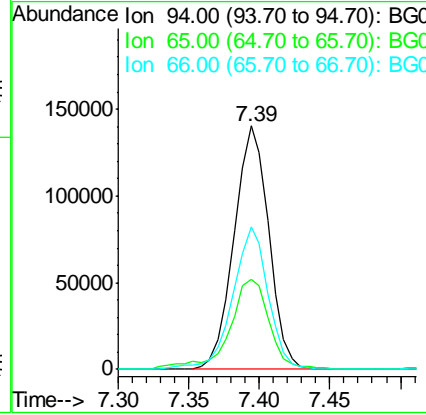
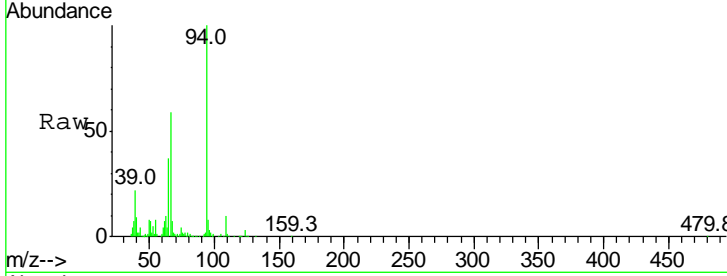


#6
 Phenol
 Concen: 55.84 ng/ul
 RT: 7.39 min Scan# 775
 Delta R.T. 0.01 min
 Lab File: BG019401.D
 Acq: 29 Oct 2015 4:03

Instrument :
 BNA_G
ClientSampled :
 E5LS4

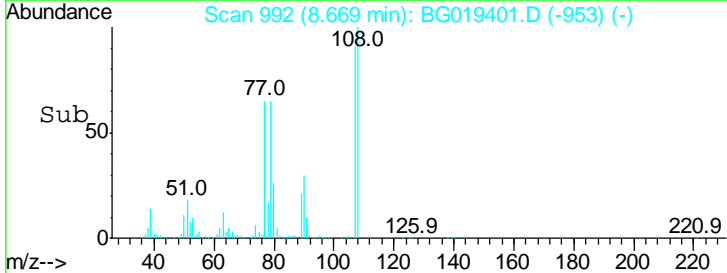
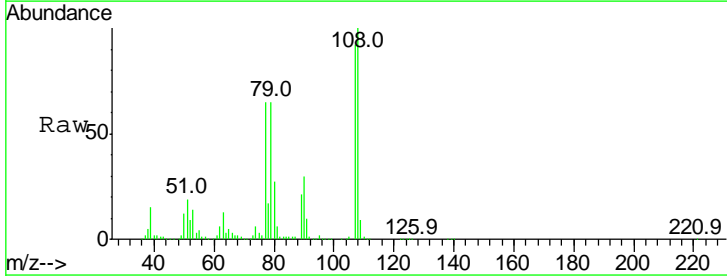
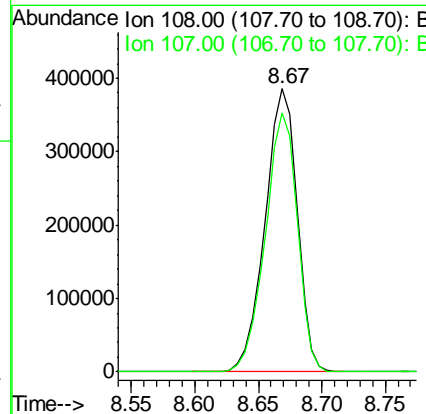
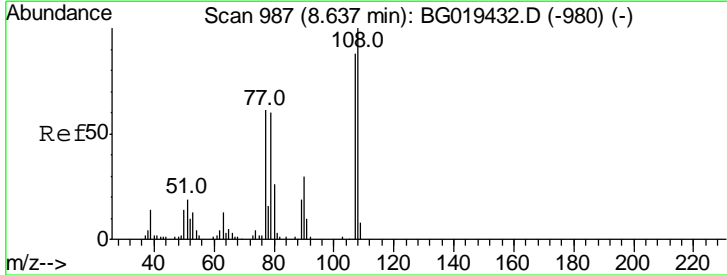
Tgt Ion	Resp	Lower	Upper
94	100		
65	37.1	29.3	43.9
66	58.7	45.0	67.6

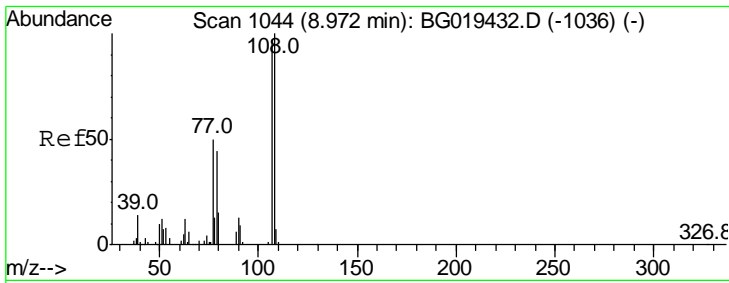
Manual Integrations
APPROVED
 Mmddadoda
 10/30/2015 6:32:11 PM



#11
 2-Methylphenol
 Concen: 214.01 ng/ul
 RT: 8.67 min Scan# 992
 Delta R.T. 0.03 min
 Lab File: BG019401.D
 Acq: 29 Oct 2015 4:03

Tgt Ion	Resp	Lower	Upper
108	100		
107	91.5	71.2	106.8



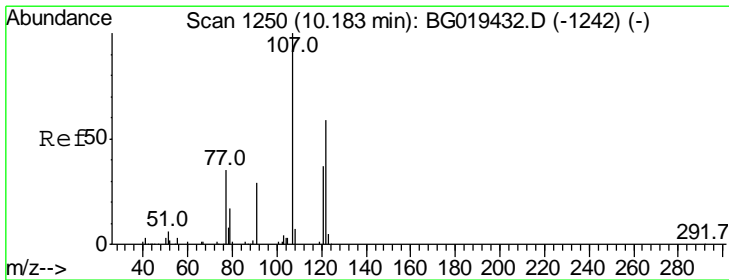
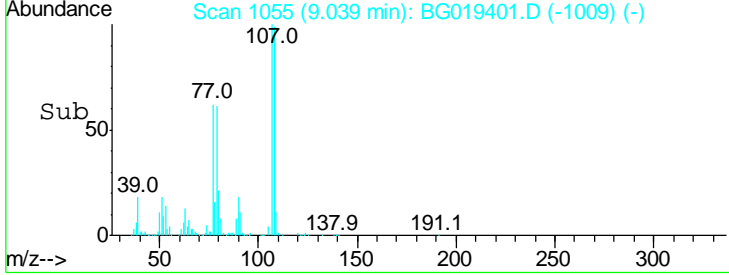
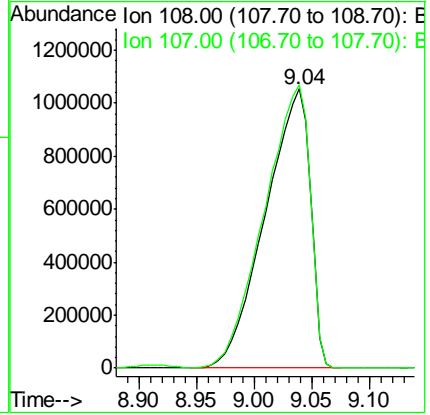
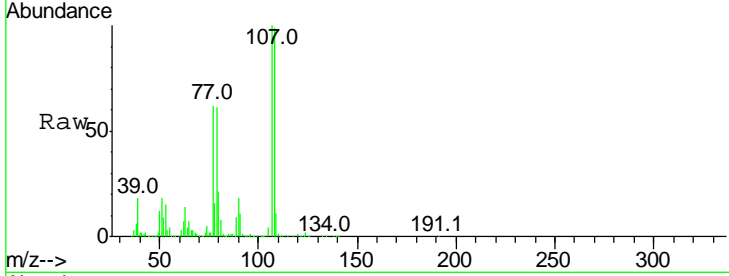


#16
 4-Methylphenol
 Concen: 819.82 ng/ul
 RT: 9.04 min Scan# 1055
 Delta R.T. 0.07 min
 Lab File: BG019401.D
 Acq: 29 Oct 2015 4:03

Instrument :
 BNA_G
ClientSampled :
 E5LS4

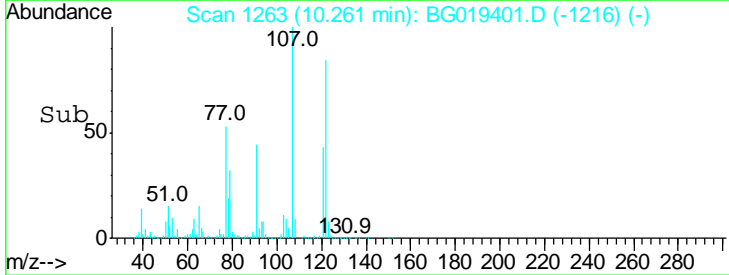
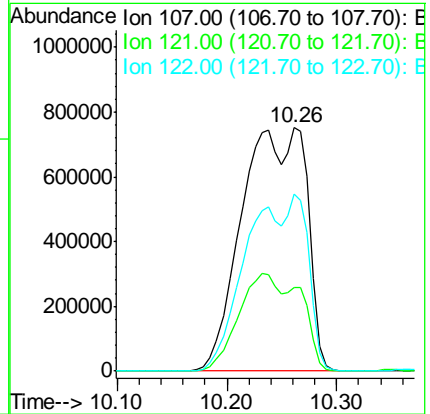
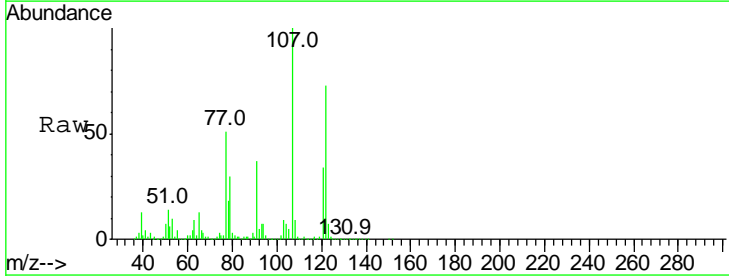
Tgt Ion	Resp	Lower	Upper
108	100		
107	101.4	85.4	128.2

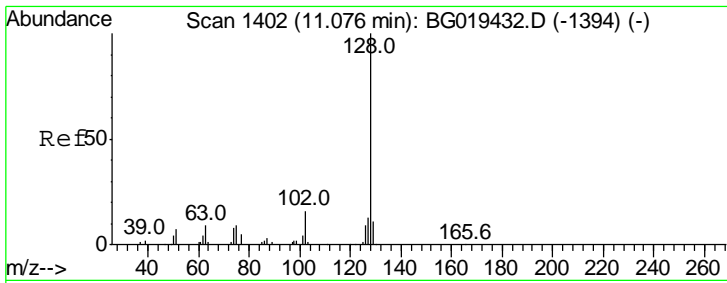
Manual Integrations
APPROVED
 Mmddadoda
 10/30/2015 6:32:11 PM



#24
 2,4-Dimethylphenol
 Concen: 640.55 ng/ul m
 RT: 10.26 min Scan# 1263
 Delta R.T. 0.07 min
 Lab File: BG019401.D
 Acq: 29 Oct 2015 4:03

Tgt Ion	Resp	Lower	Upper
107	100		
121	34.3	33.0	49.4
122	72.8	54.2	81.2



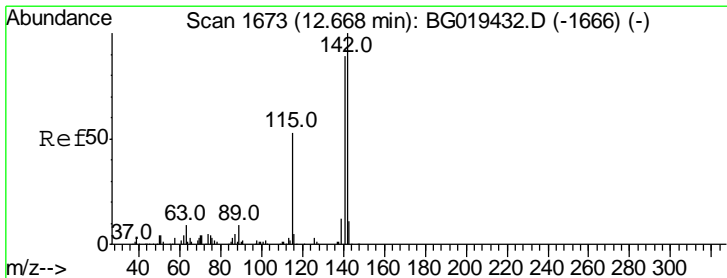
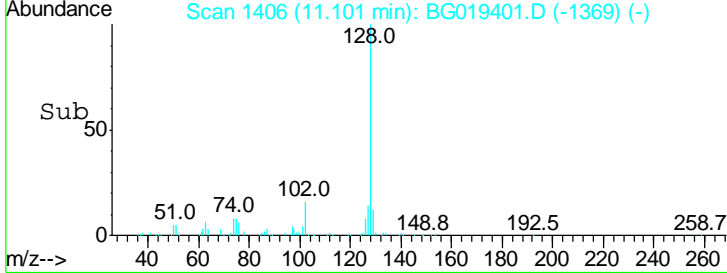
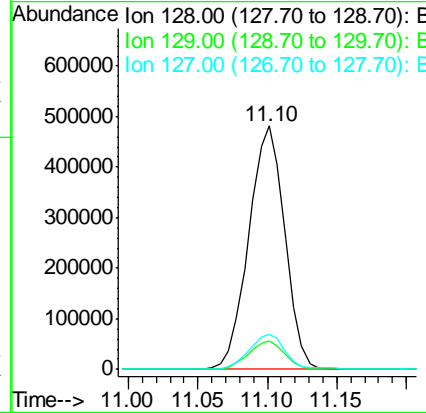
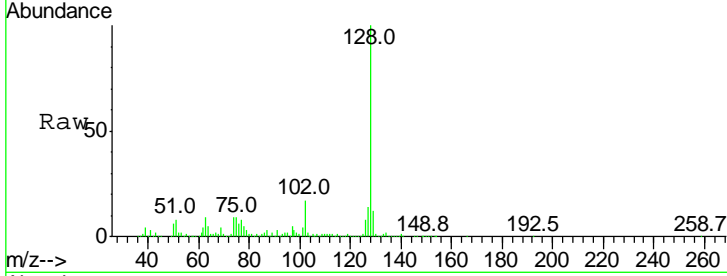


#28
 Naphthalene
 Concen: 92.67 ng/ul m
 RT: 11.10 min Scan# 1406
 Delta R.T. 0.01 min
 Lab File: BG019401.D
 Acq: 29 Oct 2015 4:03

Instrument :
 BNA_G
 ClientSampled :
 E5LS4

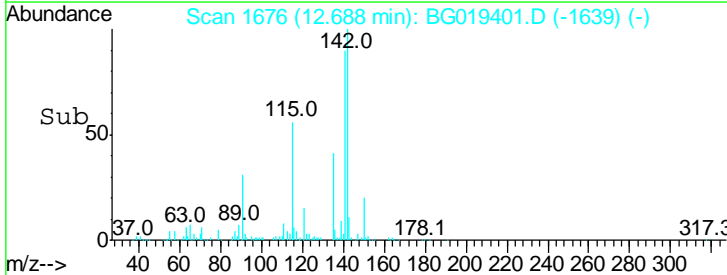
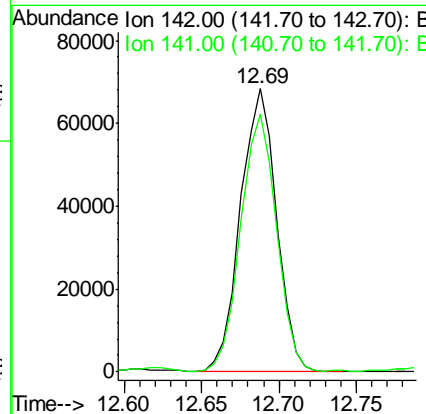
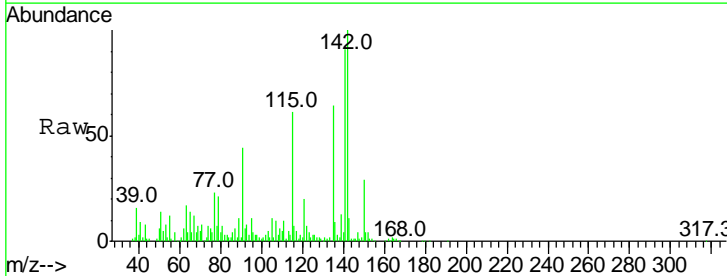
Tgt Ion	Resp	Lower	Upper
128	100		
129	12.0	8.9	13.3
127	14.2	13.1	19.7

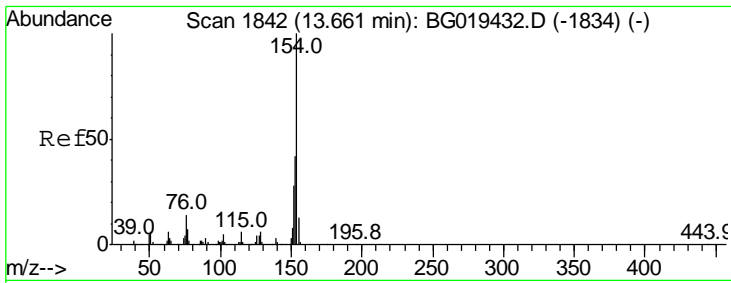
Manual Integrations
 APPROVED
 Mmdadoda
 10/30/2015 6:32:11 PM



#34
 2-Methylnaphthalene
 Concen: 14.65 ng/ul m
 RT: 12.69 min Scan# 1676
 Delta R.T. 0.01 min
 Lab File: BG019401.D
 Acq: 29 Oct 2015 4:03

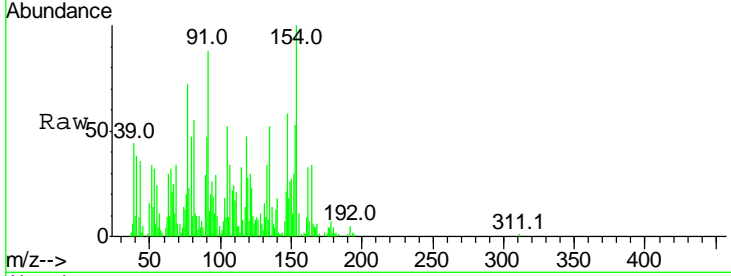
Tgt Ion	Resp	Lower	Upper
142	100		
141	90.9	73.4	110.2





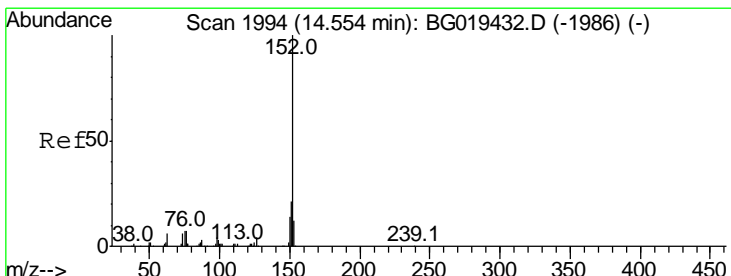
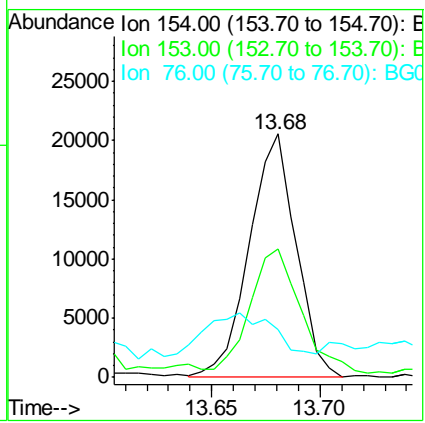
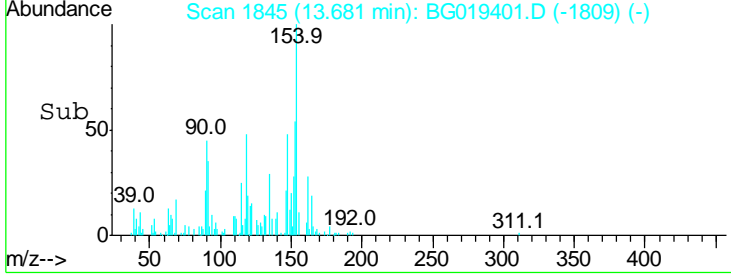
#41
 1,1'-Biphenyl
 Concen: 2.48 ng/ul m
 RT: 13.68 min Scan# 1845
 Delta R.T. 0.01 min
 Lab File: BG019401.D
 Acq: 29 Oct 2015 4:03

Instrument :
 BNA_G
ClientSampled :
 E5LS4

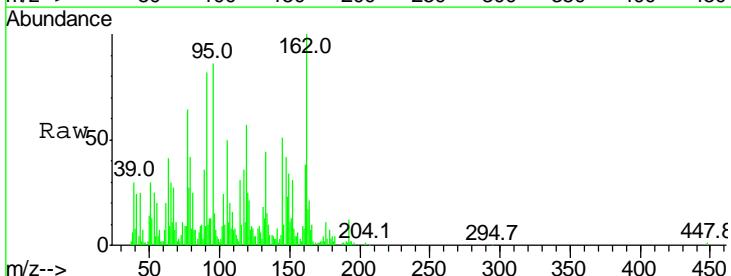


Tgt Ion	Resp	Lower	Upper
154	100		
153	52.6	32.8	49.2#
76	19.9	7.7	11.5#

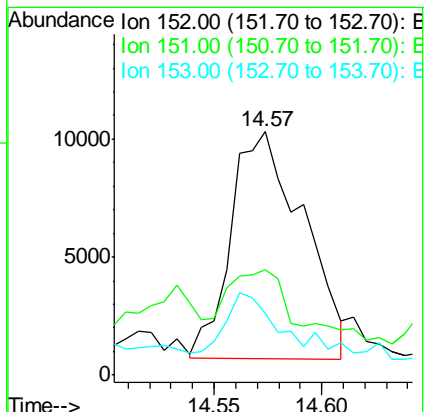
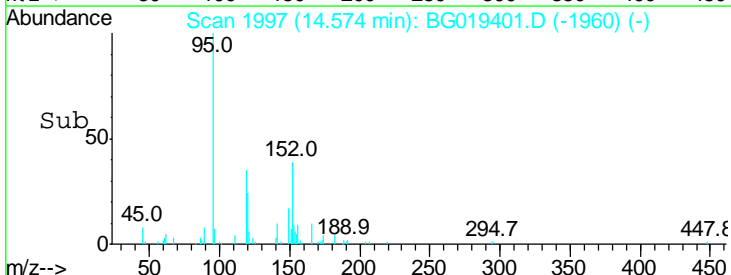
Manual Integrations
APPROVED
 Mmdadoda
 10/30/2015 6:32:11 PM

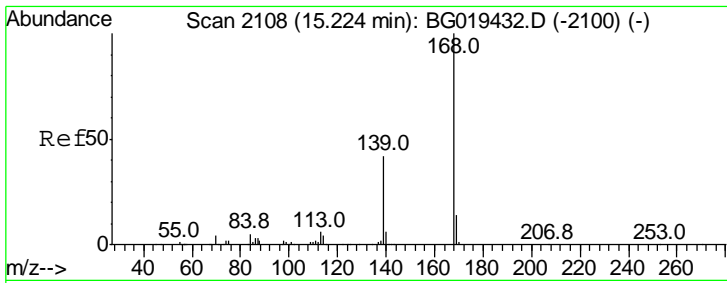


#48
 Acenaphthylene
 Concen: 1.38 ng/ul m
 RT: 14.57 min Scan# 1997
 Delta R.T. 0.01 min
 Lab File: BG019401.D
 Acq: 29 Oct 2015 4:03



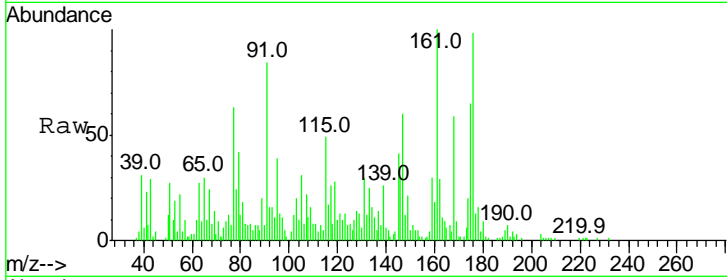
Tgt Ion	Resp	Lower	Upper
152	100		
151	43.1	16.9	25.3#
153	25.3	10.8	16.2#





#54
 Dibenzofuran
 Concen: 1.35 ng/ul m
 RT: 15.24 min Scan# 2110
 Delta R.T. 0.01 min
 Lab File: BG019401.D
 Acq: 29 Oct 2015 4:03

Instrument :
 BNA_G
 ClientSampled :
 E5LS4



Tot Ion: 168 Resp: 22008
 Ion Ratio Lower Upper
 168 100
 139 43.5 32.4 48.6

Manual Integrations
 APPROVED

Mmdadoda
 10/30/2015 6:32:11 PM

