

Data Path : Z:\HPCHEM1\BNA G\DATA\BG102817\
 Data File : BG030537.D
 Acq On : 28 Oct 2017 21:21
 Operator : SJ/JU
 Sample : I6071-08
 Misc :
 ALS Vial : 15 Sample Multiplier: 1

Instrument :
 BNA_G
 ClientSampleId :

Quant Time: Oct 30 06:48:32 2017
 Quant Method : Z:\HPCHEM1\BNA G\METHODS\8270-BG101617.M
 Quant Title : ASP BNA STANDARDS FOR 5 POINT CALIBRATION
 QLast Update : Mon Oct 16 17:32:15 2017
 Response via : Initial Calibration

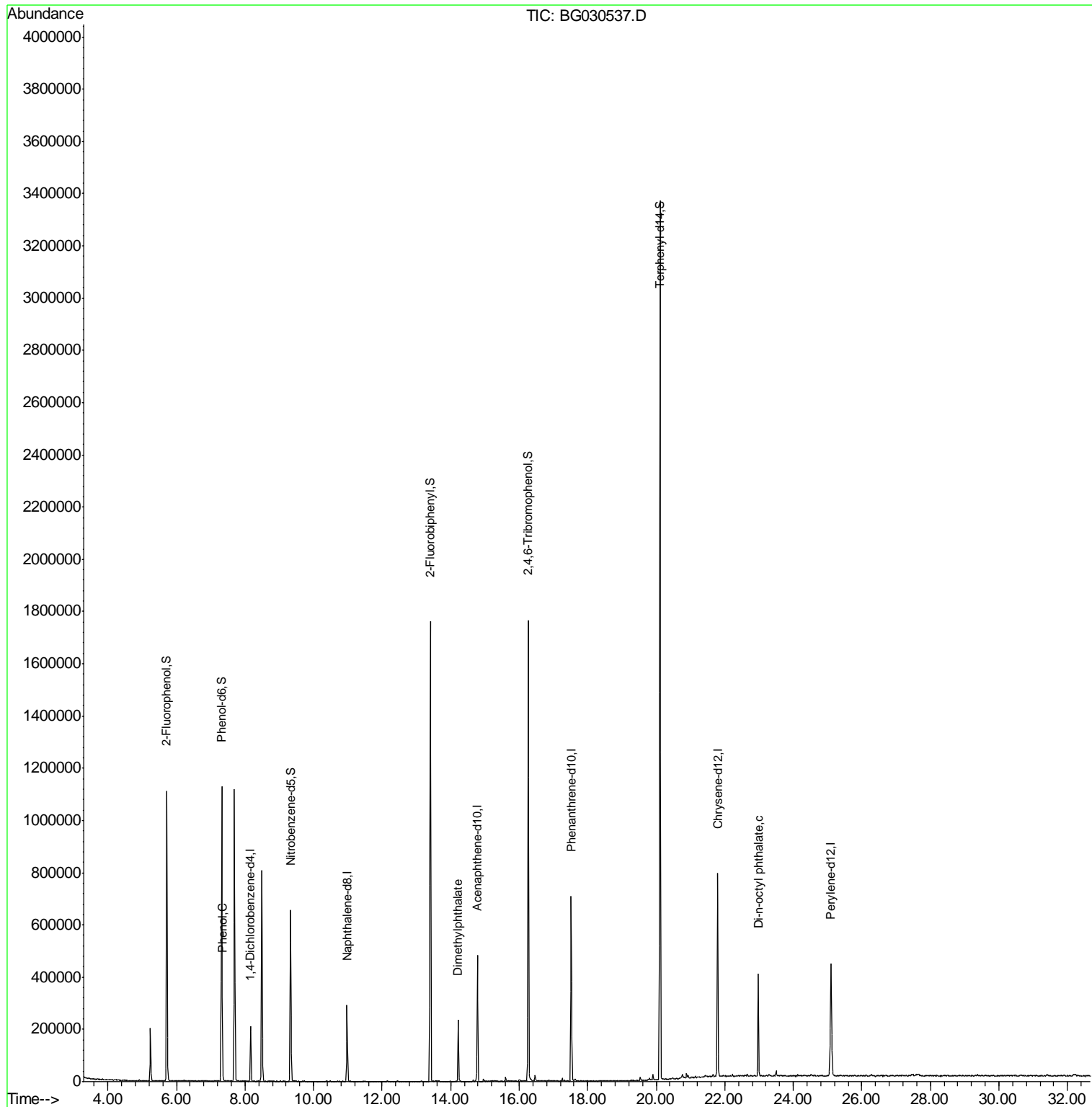
Internal Standards	R.T.	QIon	Response	Conc	Units	Dev(Min)
1) 1,4-Dichlorobenzene-d4	8.16	152	61251	20.00	ng	0.00
21) Naphthalene-d8	10.98	136	262175	20.00	ng	-0.01
38) Acenaphthene-d10	14.78	164	175247	20.00	ng	-0.01
63) Phenanthrene-d10	17.52	188	444370	20.00	ng	-0.01
75) Chrysene-d12	21.79	240	482549	20.00	ng	-0.01
86) Perylene-d12	25.10	264	477536	20.00	ng	-0.02
System Monitoring Compounds						
5) 2-Fluorophenol	5.71	112	522503	142.51	ng	0.00
7) Phenol-d6	7.32	99	686181	133.33	ng	0.00
23) Nitrobenzene-d5	9.33	82	394318	95.58	ng	-0.01
41) 2,4,6-Tribromophenol	16.27	330	360219	159.20	ng	0.00
44) 2-Fluorobiphenyl	13.41	172	999276	83.63	ng	0.00
78) Terphenyl-d14	20.11	244	1560364	73.56	ng	-0.01
Target Compounds						
10) Phenol	7.34	94	16723	3.014	ng	86
49) Dimethylphthalate	14.22	163	163007	11.922	ng	99
84) Di-n-octyl phthalate	22.98	149	70526	2.261	ng	# 54

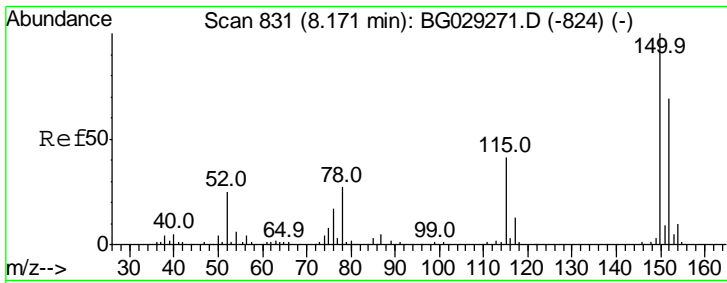
(#) = qualifier out of range (m) = manual integration (+) = signals summed

Data Path : Z:\HPCHEM1\BNA G\DATA\BG102817\
 Data File : BG030537.D
 Acq On : 28 Oct 2017 21:21
 Operator : SJ/JU
 Sample : I6071-08
 Misc :
 ALS Vial : 15 Sample Multiplier: 1

Instrument :
 BNA_G
 ClientSampleId :

Quant Time: Oct 30 06:48:32 2017
 Quant Method : Z:\HPCHEM1\BNA G\METHODS\8270-BG101617.M
 Quant Title : ASP BNA STANDARDS FOR 5 POINT CALIBRATION
 QLast Update : Mon Oct 16 17:32:15 2017
 Response via : Initial Calibration

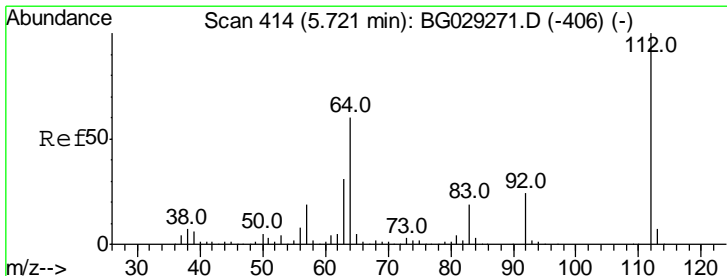
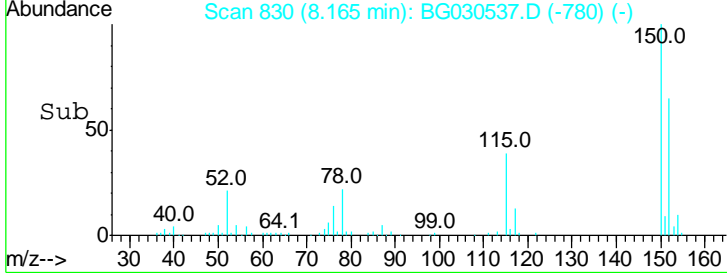
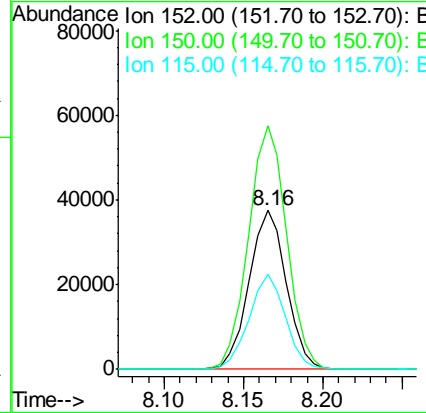
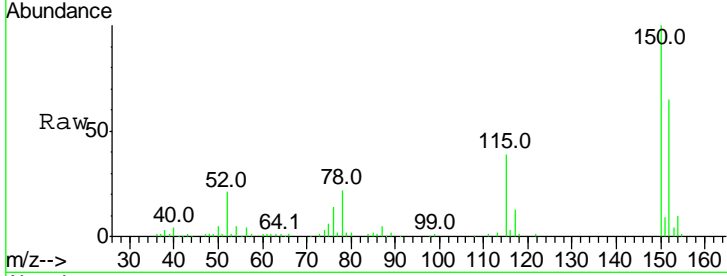




#1
 1,4-Dichlorobenzene-d4
 Concen: 20.000 ng
 RT: 8.16 min Scan# 830
 Delta R.T. -0.01 min
 Lab File: BG030537.D
 Acq: 28 Oct 2017 21:21

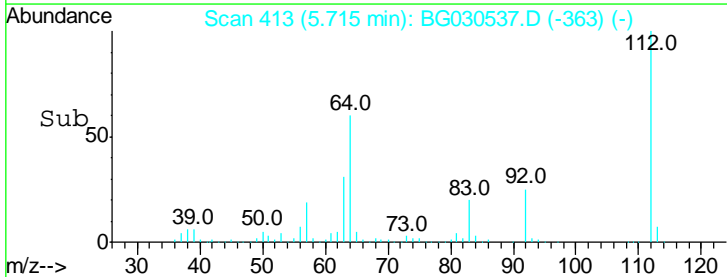
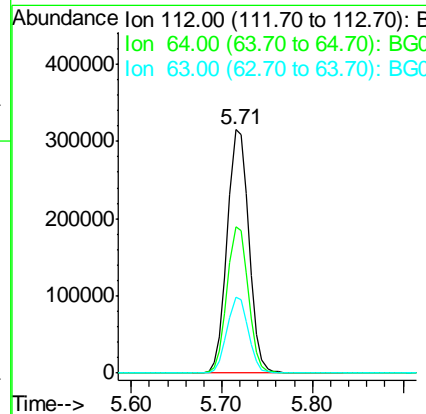
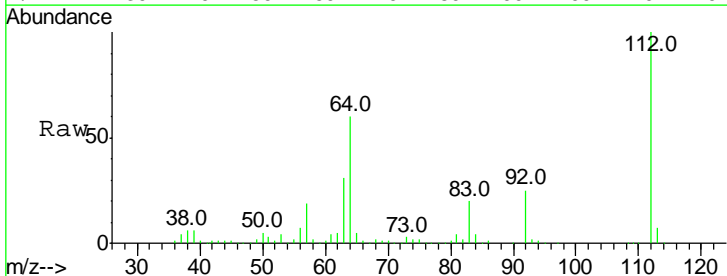
Instrument :
 BNA_G
 ClientSampled :

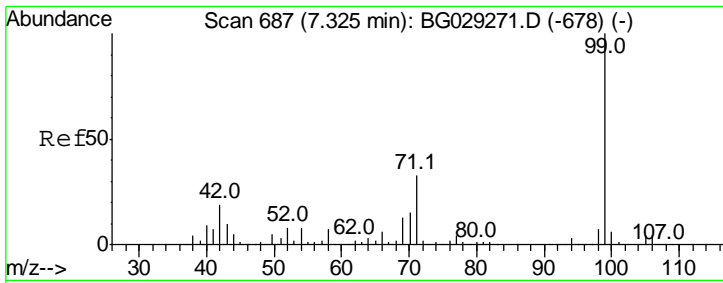
Tgt Ion	Resp	Lower	Upper
152	61251		
152	100		
150	153.4	126.6	189.8
115	59.7	53.0	79.4



#5
 2-Fluorophenol
 Concen: 142.507 ng
 RT: 5.71 min Scan# 413
 Delta R.T. -0.01 min
 Lab File: BG030537.D
 Acq: 28 Oct 2017 21:21

Tgt Ion	Resp	Lower	Upper
112	522503		
112	100		
64	60.1	56.3	84.5
63	31.1	30.1	45.1

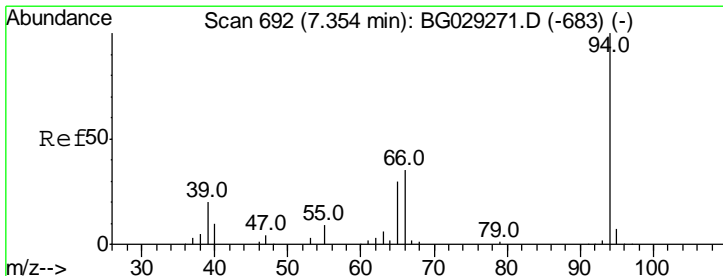
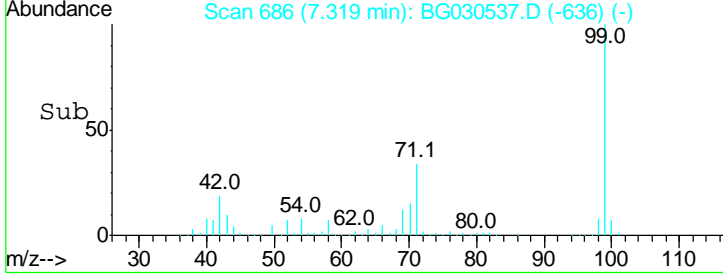
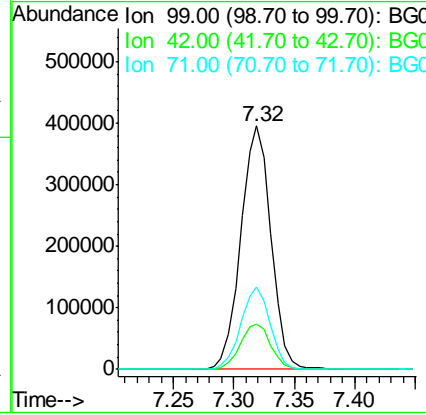
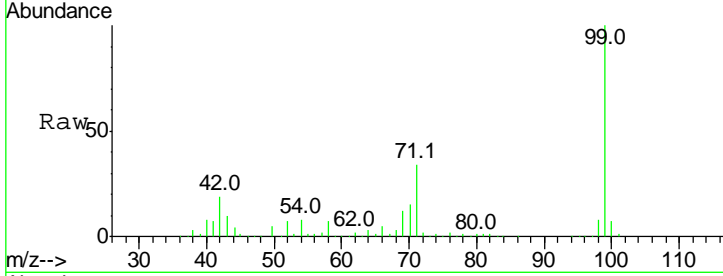




#7
 Phenol-d6
 Concen: 133.329 ng
 RT: 7.32 min Scan# 686
 Delta R.T. -0.01 min
 Lab File: BG030537.D
 Acq: 28 Oct 2017 21:21

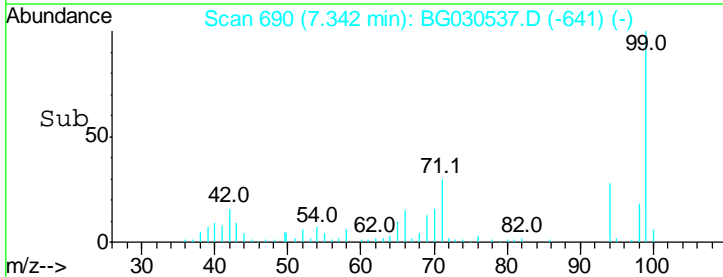
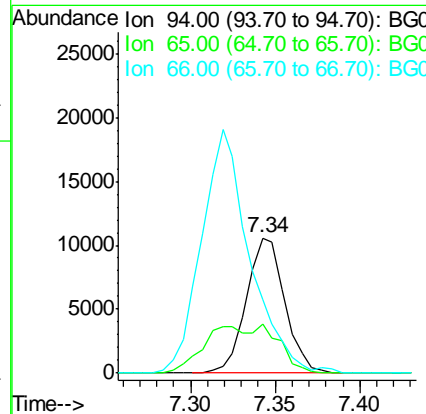
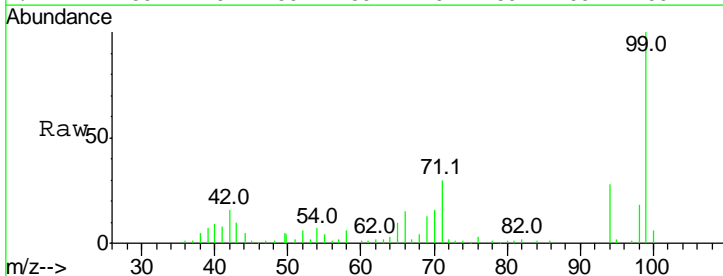
Instrument :
 BNA_G
 ClientSampled :

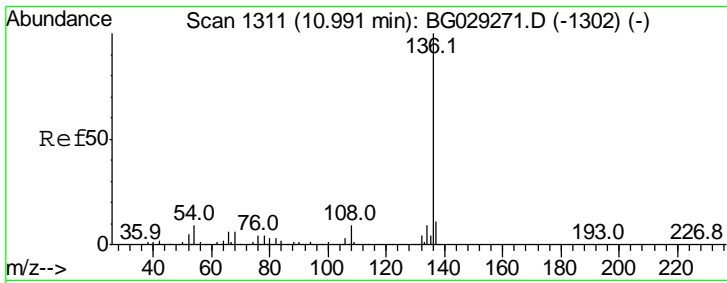
Tgt Ion	Resp	Lower	Upper
99	100		
42	18.7	14.1	21.1
71	33.7	26.1	39.1



#10
 Phenol
 Concen: 3.014 ng
 RT: 7.34 min Scan# 690
 Delta R.T. -0.01 min
 Lab File: BG030537.D
 Acq: 28 Oct 2017 21:21

Tgt Ion	Resp	Lower	Upper
94	100		
65	36.1	11.9	51.9
66	54.5	22.2	62.2

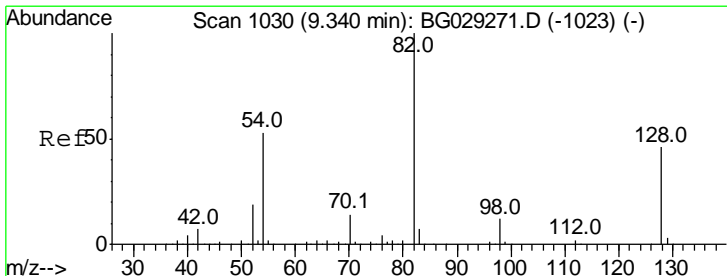
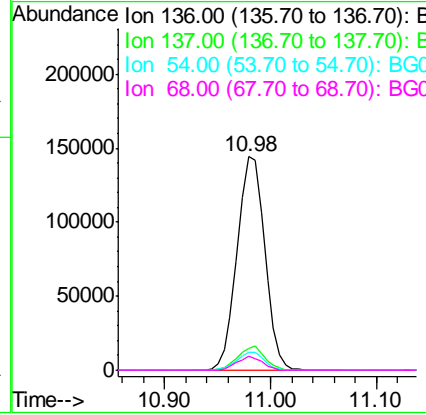
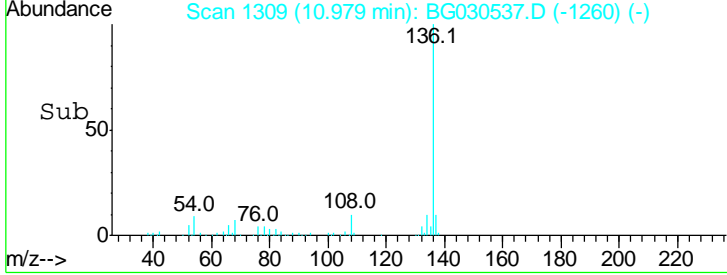
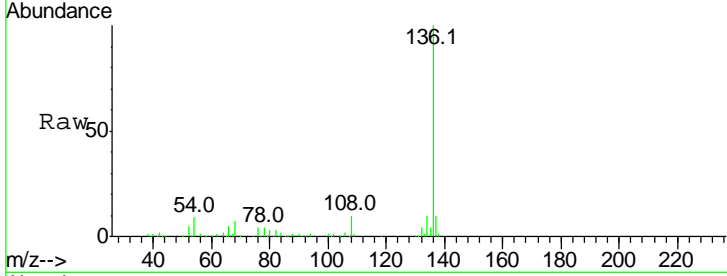




#21
 Naphthalene-d8
 Concen: 20.000 ng
 RT: 10.98 min Scan# 1309
 Delta R.T. -0.01 min
 Lab File: BG030537.D
 Acq: 28 Oct 2017 21:21

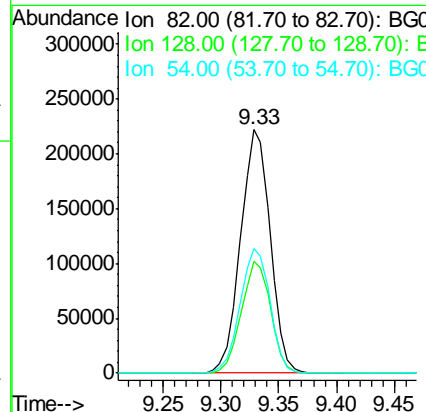
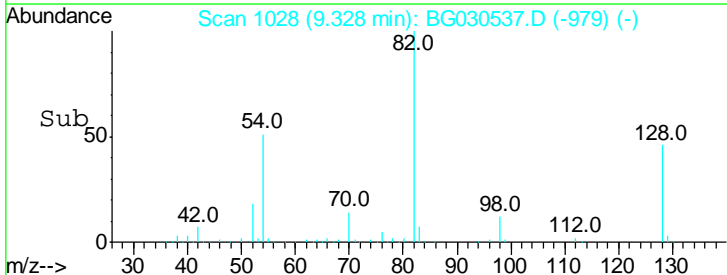
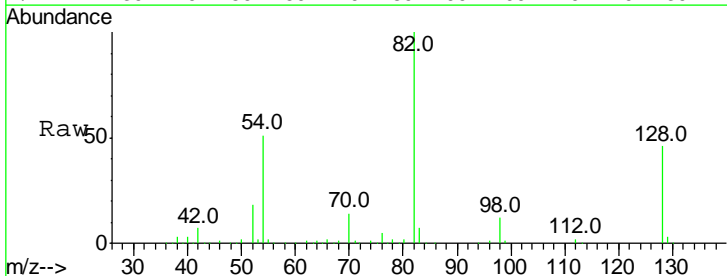
Instrument :
 BNA_G
 ClientSampled :

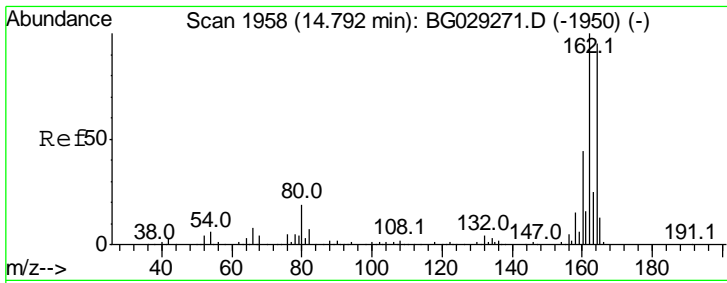
Tgt Ion	Resp	Lower	Upper
136	100		
137	10.3	9.2	13.8
54	8.6	10.3	15.5#
68	6.6	4.5	6.7



#23
 Nitrobenzene-d5
 Concen: 95.577 ng
 RT: 9.33 min Scan# 1028
 Delta R.T. -0.01 min
 Lab File: BG030537.D
 Acq: 28 Oct 2017 21:21

Tgt Ion	Resp	Lower	Upper
82	100		
128	46.1	29.7	44.5#
54	51.4	43.1	64.7

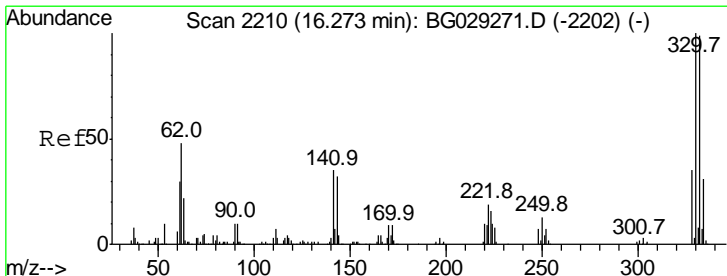
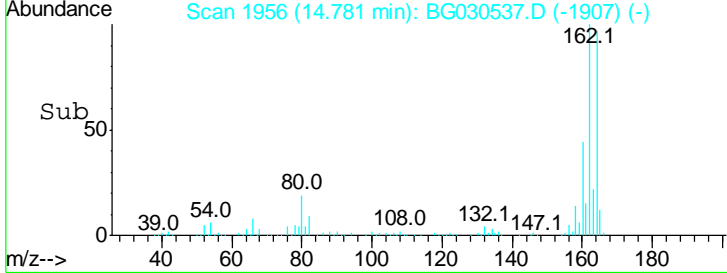
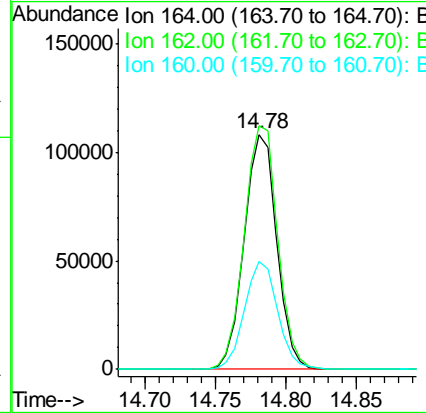
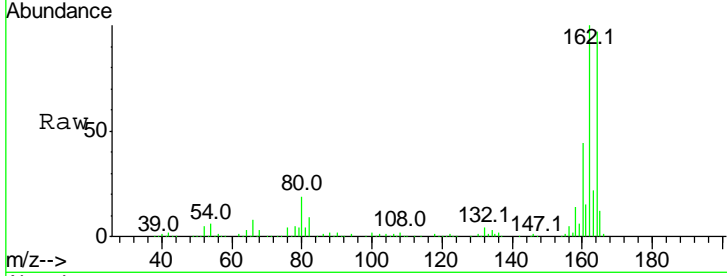




#38
 Acenaphthene-d10
 Concen: 20.000 ng
 RT: 14.78 min Scan# 1956
 Delta R.T. -0.01 min
 Lab File: BG030537.D
 Acq: 28 Oct 2017 21:21

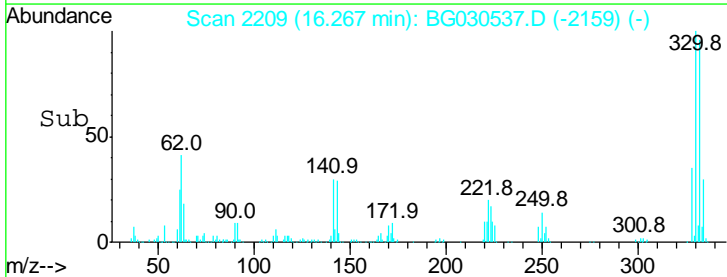
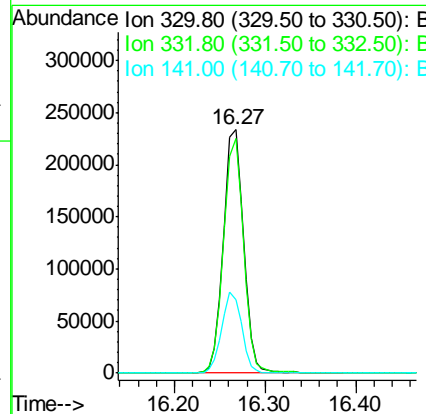
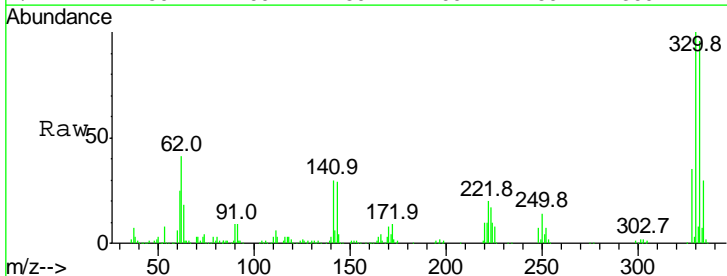
Instrument :
 BNA_G
 ClientSampled :

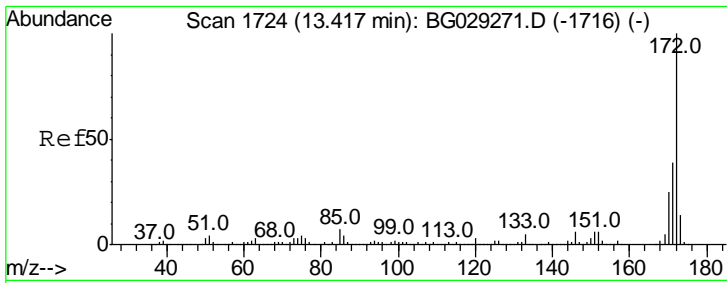
Tgt Ion	Resp	Lower	Upper
164	100		
162	103.5	78.8	118.2
160	46.0	35.4	53.0



#41
 2,4,6-Tribromophenol
 Concen: 159.205 ng
 RT: 16.27 min Scan# 2209
 Delta R.T. -0.01 min
 Lab File: BG030537.D
 Acq: 28 Oct 2017 21:21

Tgt Ion	Resp	Lower	Upper
330	100		
332	95.8	77.0	115.6
141	33.0	25.2	37.8

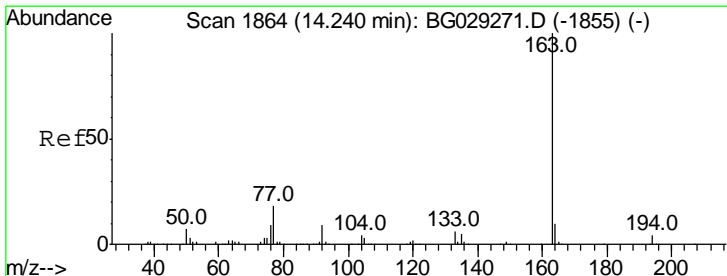
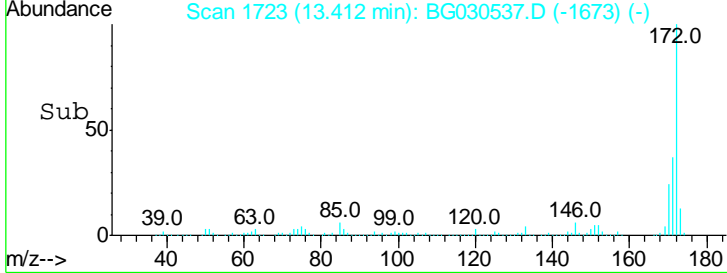
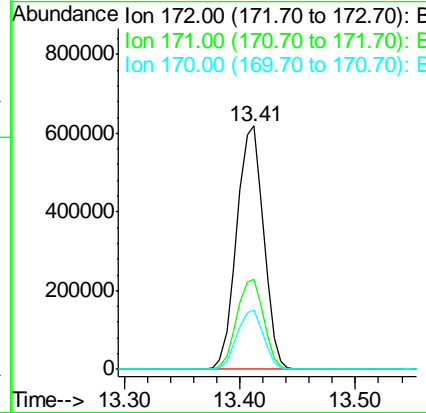
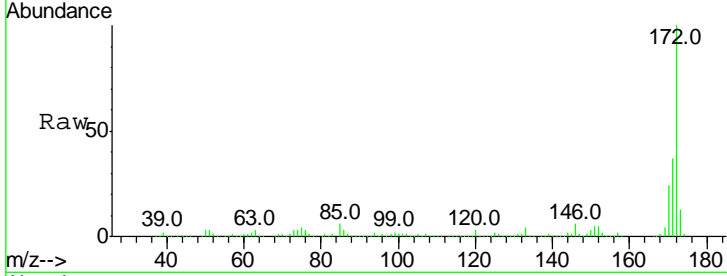




#44
 2-Fluorobiphenyl
 Concen: 83.630 ng
 RT: 13.41 min Scan# 1723
 Delta R.T. -0.01 min
 Lab File: BG030537.D
 Acq: 28 Oct 2017 21:21

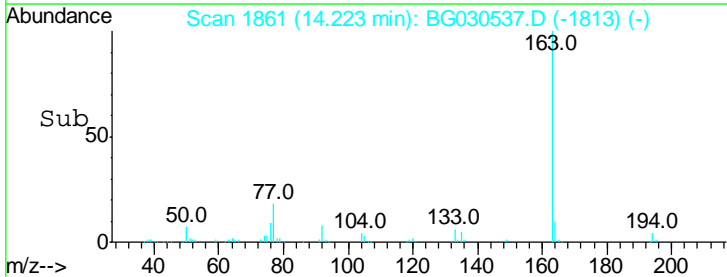
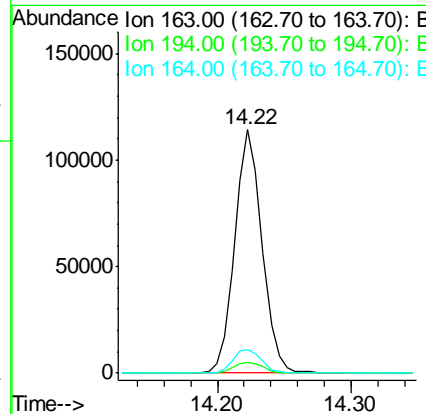
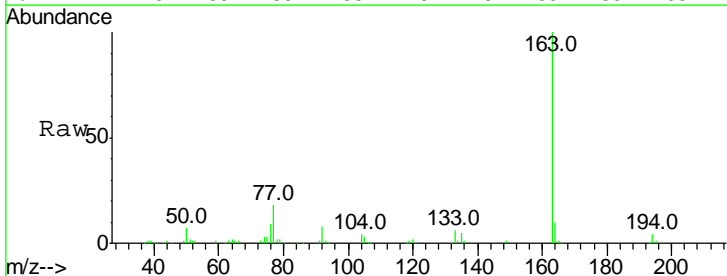
Instrument :
 BNA_G
 ClientSampled :

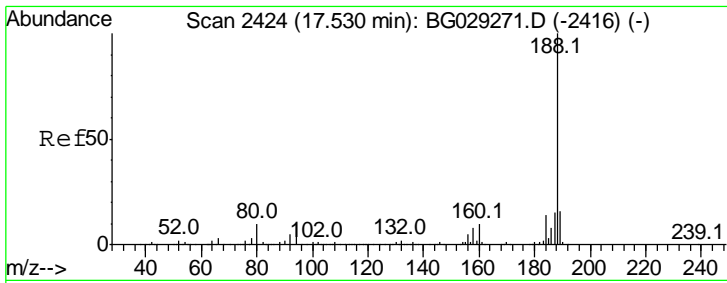
Tgt Ion	Resp	Lower	Upper
172	100		
171	37.1	30.0	45.0
170	24.2	19.5	29.3



#49
 Dimethylphthalate
 Concen: 11.922 ng
 RT: 14.22 min Scan# 1861
 Delta R.T. -0.02 min
 Lab File: BG030537.D
 Acq: 28 Oct 2017 21:21

Tgt Ion	Resp	Lower	Upper
163	100		
194	4.2	3.4	5.2
164	9.7	8.2	12.4

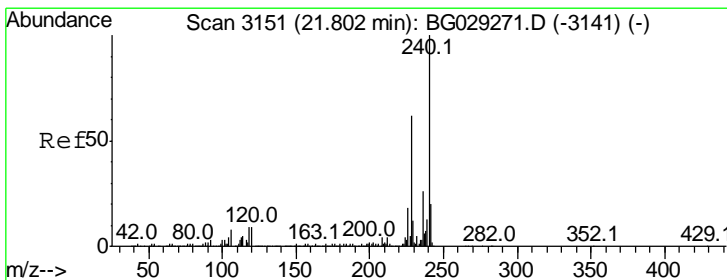
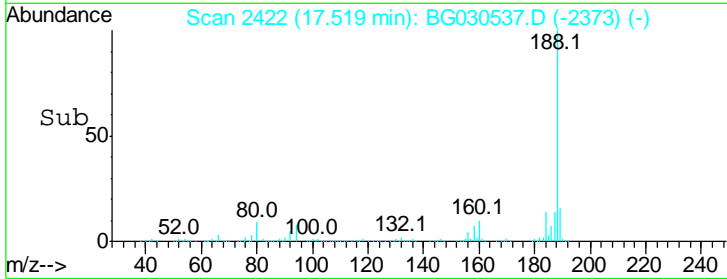
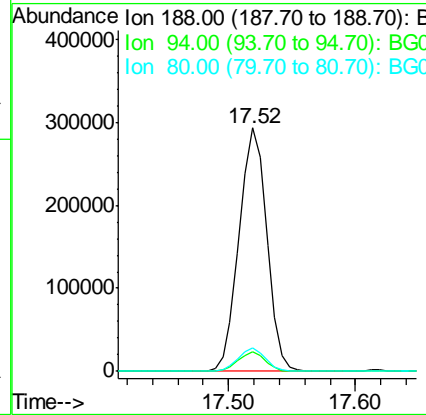
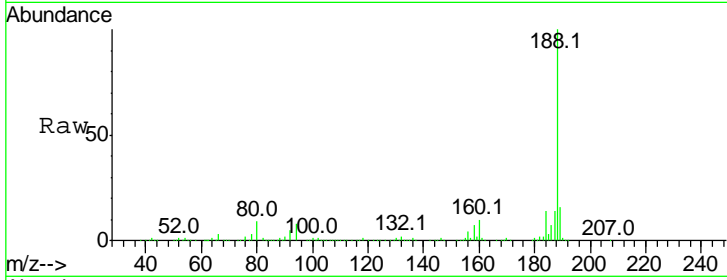




#63
 Phenanthrene-d10
 Concen: 20.000 ng
 RT: 17.52 min Scan# 2422
 Delta R.T. -0.01 min
 Lab File: BG030537.D
 Acq: 28 Oct 2017 21:21

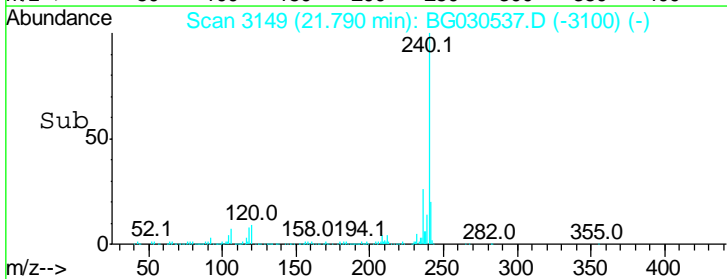
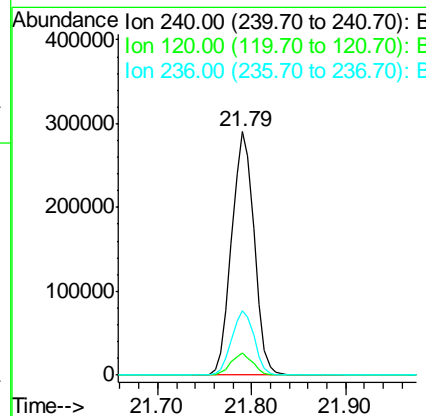
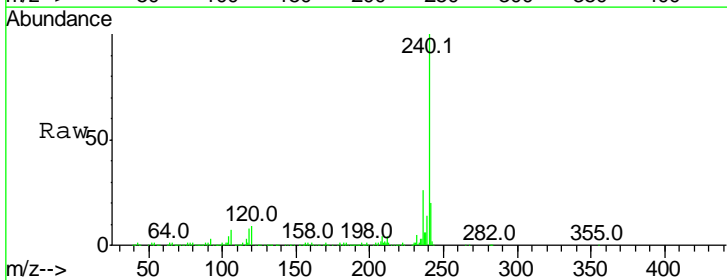
Instrument :
 BNA_G
 ClientSampled :

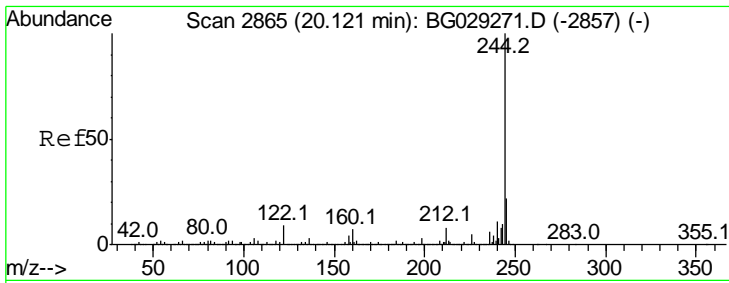
Tgt Ion	Resp	Lower	Upper
188	100		
94	7.9	6.9	10.3
80	9.5	7.7	11.5



#75
 Chrysene-d12
 Concen: 20.000 ng
 RT: 21.79 min Scan# 3149
 Delta R.T. -0.01 min
 Lab File: BG030537.D
 Acq: 28 Oct 2017 21:21

Tgt Ion	Resp	Lower	Upper
240	100		
120	9.2	6.8	10.2
236	26.4	20.9	31.3



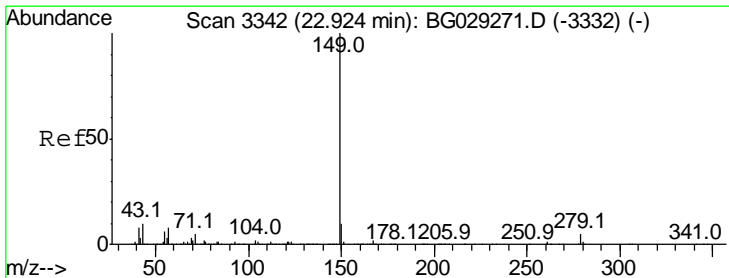
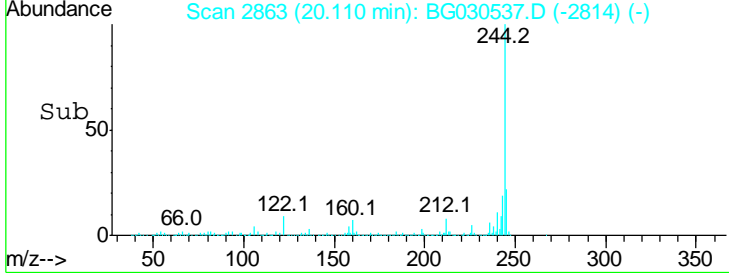
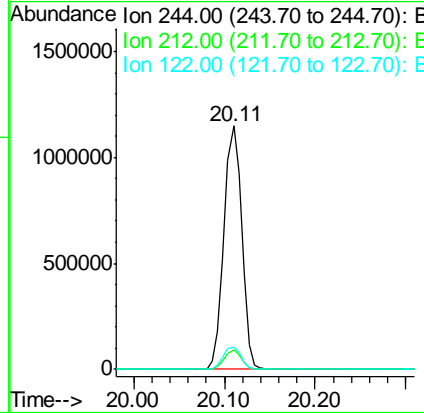
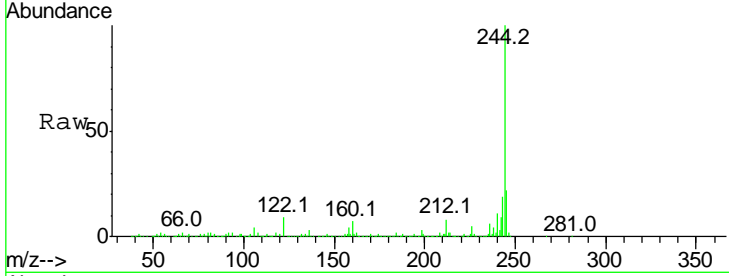


#78
 Terphenyl-d14
 Concen: 73.562 ng
 RT: 20.11 min Scan# 2863
 Delta R.T. -0.01 min
 Lab File: BG030537.D
 Acq: 28 Oct 2017 21:21

Instrument :
 BNA_G
 ClientSampled :

Tgt Ion: 244 Resp: 1560364

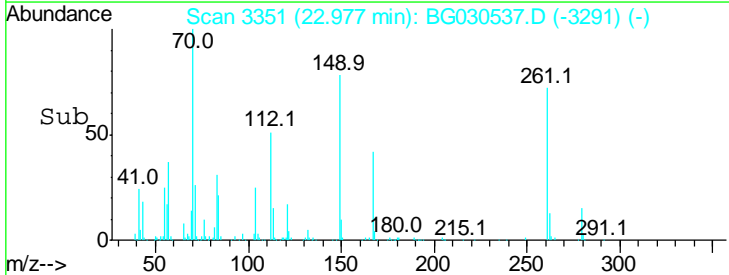
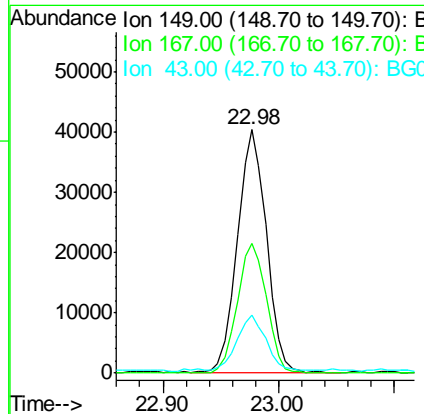
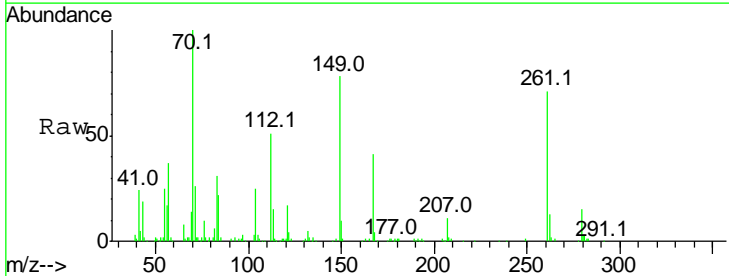
Ion	Ratio	Lower	Upper
244	100		
212	7.9	5.8	8.8
122	9.3	7.0	10.4

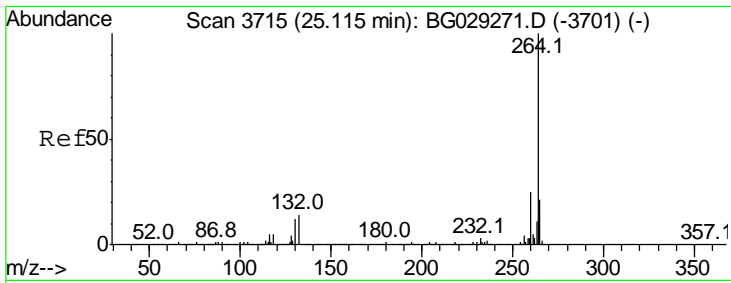


#84
 Di-n-octyl phthalate
 Concen: 2.261 ng
 RT: 22.98 min Scan# 3351
 Delta R.T. 0.05 min
 Lab File: BG030537.D
 Acq: 28 Oct 2017 21:21

Tgt Ion: 149 Resp: 70526

Ion	Ratio	Lower	Upper
149	100		
167	53.4	1.4	2.0#
43	23.3	8.9	13.3#





#86
 Perylene-d12
 Concen: 20.000 ng
 RT: 25.10 min Scan# 3712
 Delta R.T. -0.02 min
 Lab File: BG030537.D
 Acq: 28 Oct 2017 21:21

Instrument :
 BNA_G
 ClientSampled :

Tot Ion: 264 Resp: 477536

Ion	Ratio	Lower	Upper
264	100		
260	22.8	17.4	26.0
265	21.8	17.7	26.5

