

Data Path : Z:\SVOASRV\HPCHEM1\BNA G\DATA\BG103019\
 Data File : BG043423.D
 Acq On : 31 Oct 2019 5:46
 Operator : JU
 Sample : K5587-06
 Misc :
 ALS Vial : 22 Sample Multiplier: 1

Instrument :
 BNA_G
 ClientSampleId :
 CSA-2-1-10

Quant Time: Oct 31 08:35:56 2019
 Quant Method : Z:\SVOASRV\HPCHEM1\BNA G\METHODS\8270-BG102119.M
 Quant Title : ASP BNA STANDARDS FOR 5 POINT CALIBRATION
 QLast Update : Mon Oct 21 16:37:43 2019
 Response via : Initial Calibration

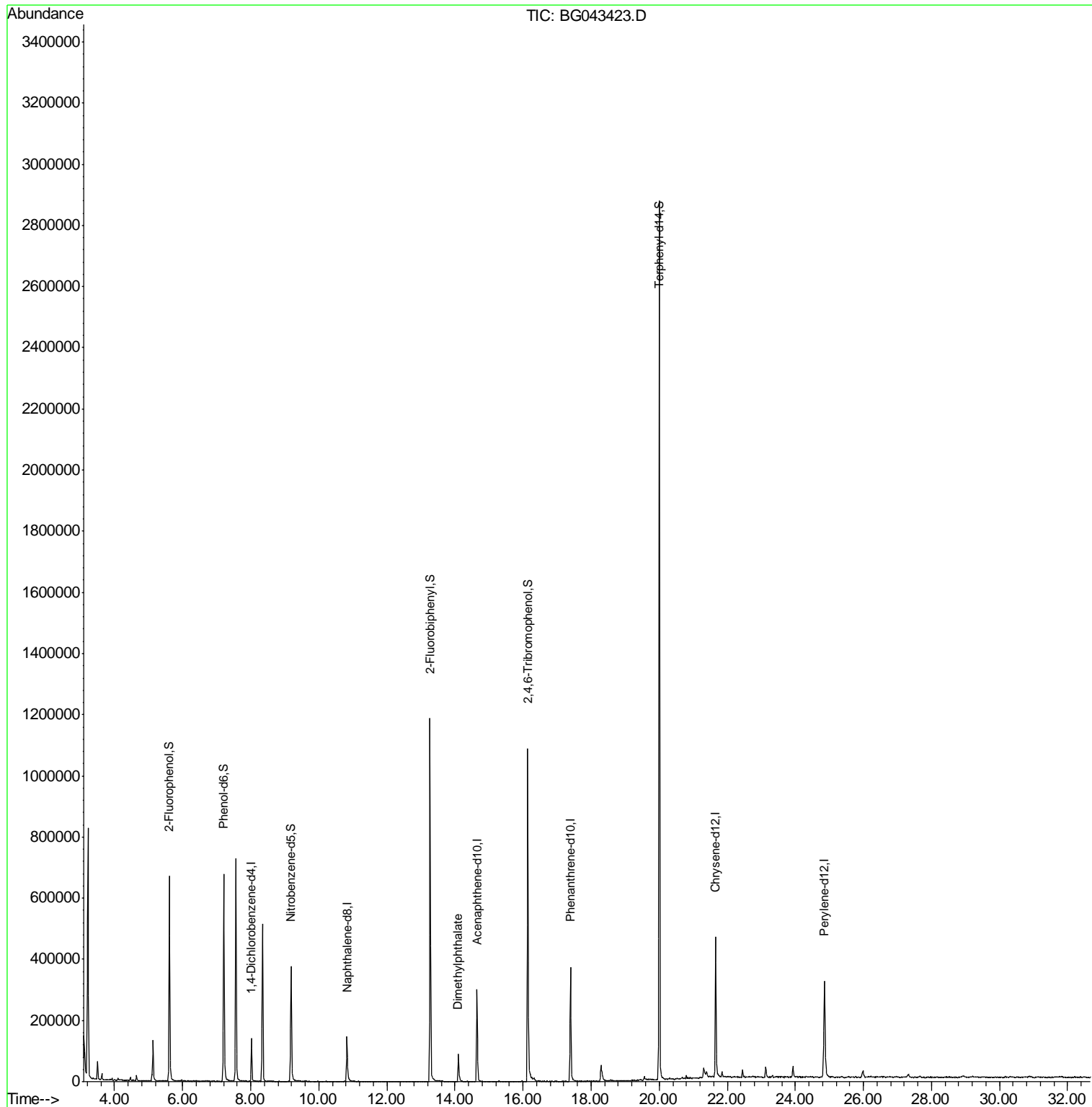
Internal Standards	R.T.	QIon	Response	Conc	Units	Dev(Min)
1) 1,4-Dichlorobenzene-d4	8.02	152	43290	20.00	ng	0.00
21) Naphthalene-d8	10.83	136	147774	20.00	ng	0.00
39) Acenaphthene-d10	14.65	164	116858	20.00	ng	0.00
64) Phenanthrene-d10	17.39	188	273652	20.00	ng	0.00
76) Chrysene-d12	21.66	240	311620	20.00	ng	0.00
87) Perylene-d12	24.86	264	359368	20.00	ng	-0.01
System Monitoring Compounds						
5) 2-Fluorophenol	5.61	112	312832	132.42	ng	0.00
7) Phenol-d6	7.21	99	428037	125.93	ng	0.00
23) Nitrobenzene-d5	9.19	82	258121	90.05	ng	0.00
42) 2,4,6-Tribromophenol	16.14	330	284273	127.83	ng	0.00
45) 2-Fluorobiphenyl	13.27	172	718609	84.97	ng	0.00
79) Terphenyl-d14	20.00	244	1519507	91.48	ng	0.00
Target Compounds						Qvalue
50) Dimethylphthalate	14.10	163	80668	8.912	ng	99

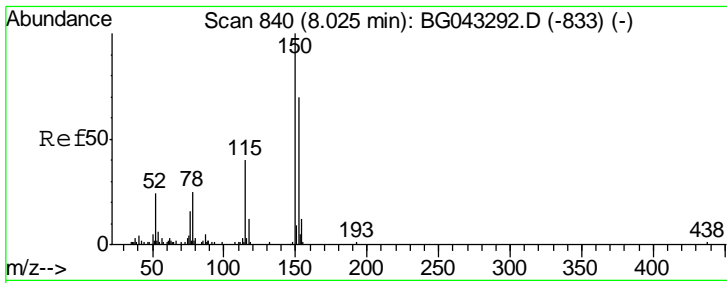
(#) = qualifier out of range (m) = manual integration (+) = signals summed

Data Path : Z:\SVOASRV\HPCHEM1\BNA G\DATA\BG103019\
 Data File : BG043423.D
 Acq On : 31 Oct 2019 5:46
 Operator : JU
 Sample : K5587-06
 Misc :
 ALS Vial : 22 Sample Multiplier: 1

Instrument :
 BNA_G
 ClientSampleId :
 CSA-2-1-10

Quant Time: Oct 31 08:35:56 2019
 Quant Method : Z:\SVOASRV\HPCHEM1\BNA G\METHODS\8270-BG102119.M
 Quant Title : ASP BNA STANDARDS FOR 5 POINT CALIBRATION
 QLast Update : Mon Oct 21 16:37:43 2019
 Response via : Initial Calibration

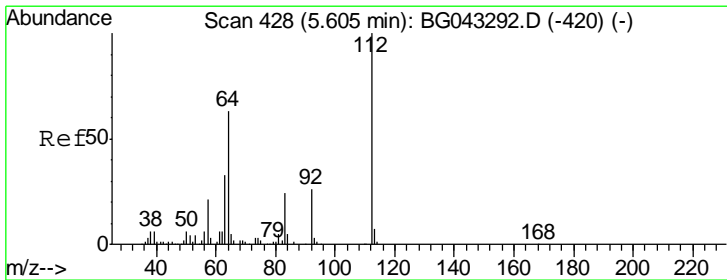
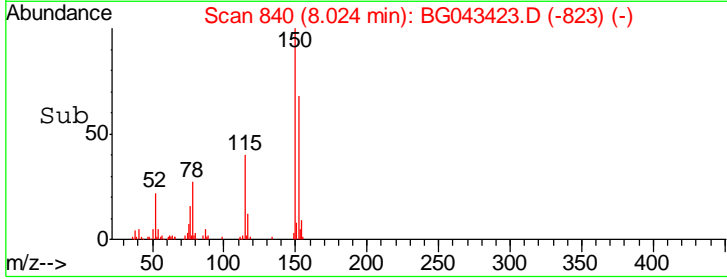
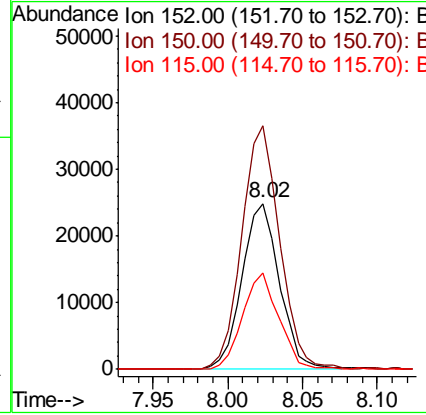
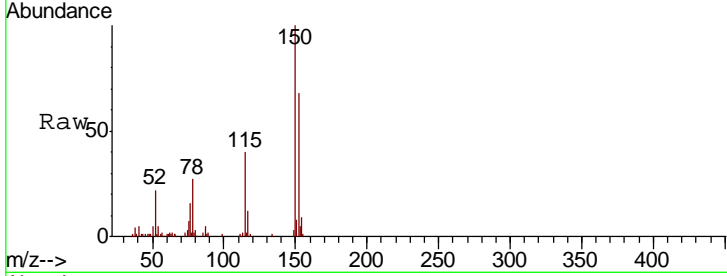




#1
 1,4-Dichlorobenzene-d4
 Concen: 20.000 ng
 RT: 8.02 min Scan# 840
 Delta R.T. -0.00 min
 Lab File: BG043423.D
 Acq: 31 Oct 2019 5:46

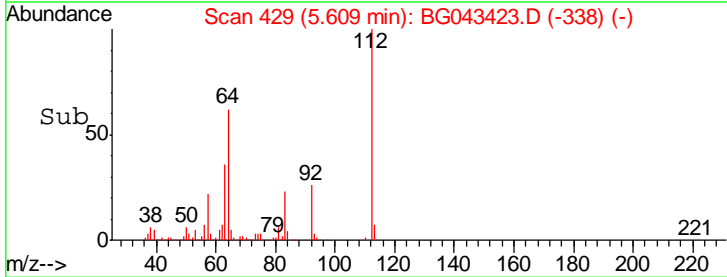
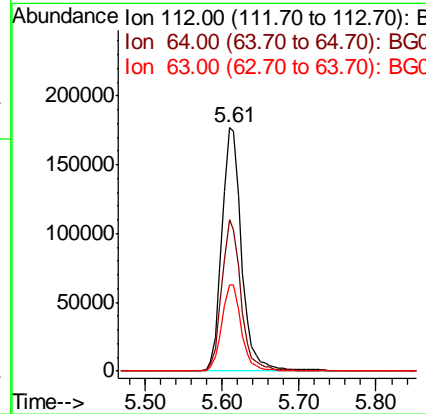
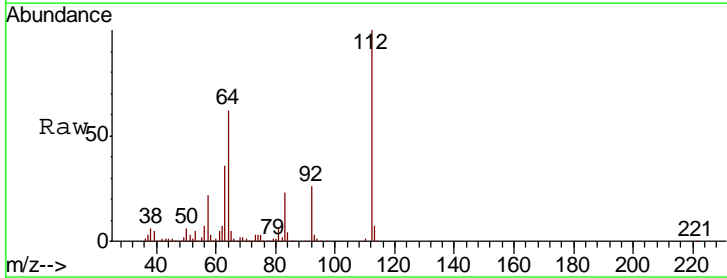
Instrument :
 BNA_G
ClientSampled :
 CSA-2-1-10

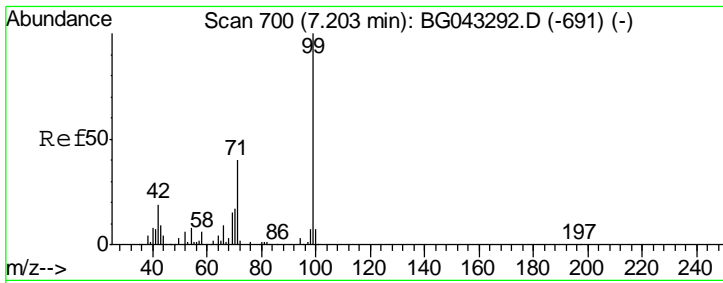
Tgt Ion	Resp	Lower	Upper
152	43290		
150	146.9	113.6	170.4
115	58.5	45.9	68.9



#5
 2-Fluorophenol
 Concen: 132.420 ng
 RT: 5.61 min Scan# 429
 Delta R.T. 0.00 min
 Lab File: BG043423.D
 Acq: 31 Oct 2019 5:46

Tgt Ion	Resp	Lower	Upper
112	312832		
64	62.2	50.2	75.2
63	35.6	26.7	40.1

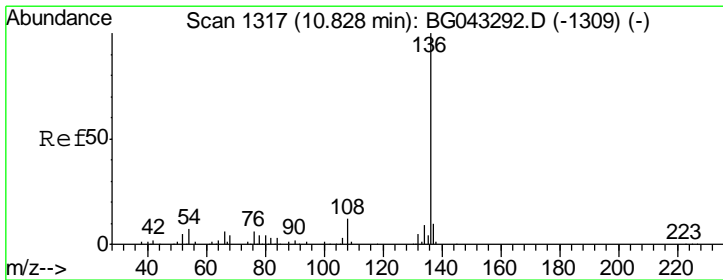
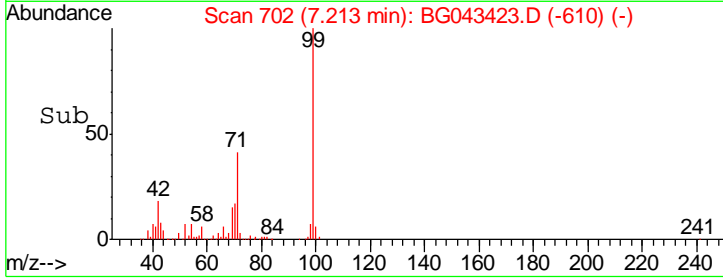
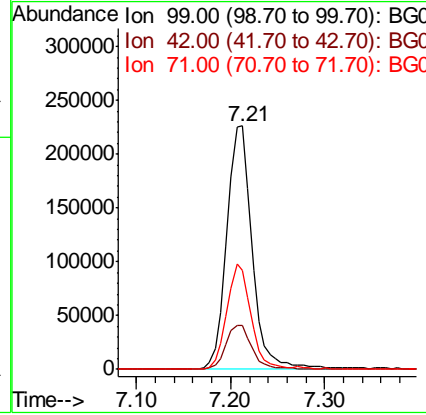
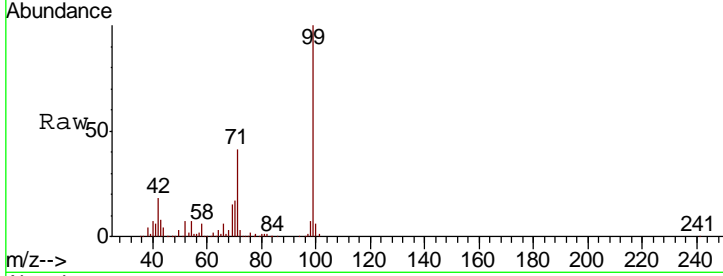




#7
 Phenol-d6
 Concen: 125.932 ng
 RT: 7.21 min Scan# 702
 Delta R.T. 0.01 min
 Lab File: BG043423.D
 Acq: 31 Oct 2019 5:46

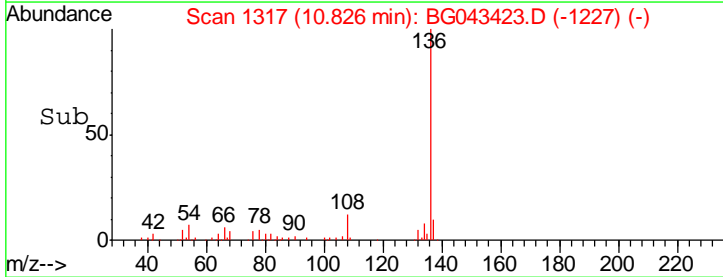
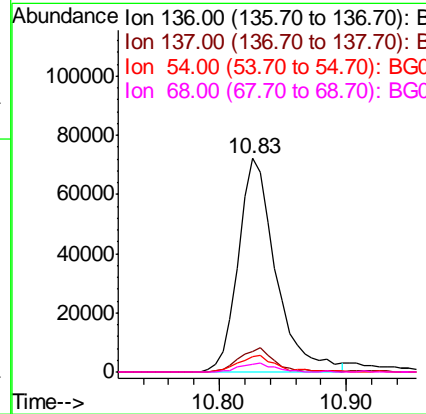
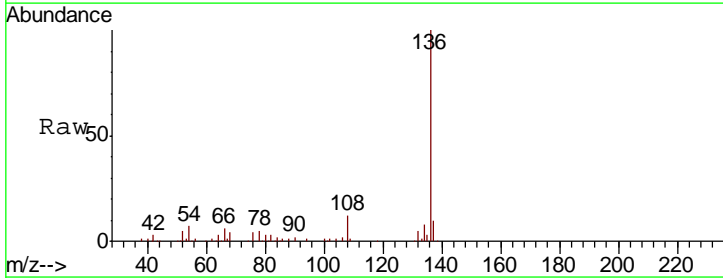
Instrument :
 BNA_G
 ClientSampled :
 CSA-2-1-10

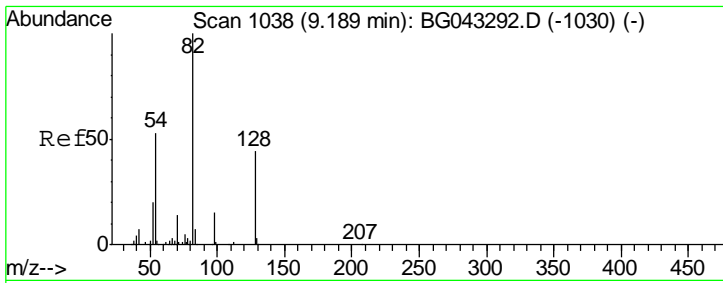
Tgt Ion	Resp	Lower	Upper
99	428037		
42	17.9	14.9	22.3
71	40.9	32.2	48.2



#21
 Naphthalene-d8
 Concen: 20.000 ng
 RT: 10.83 min Scan# 1317
 Delta R.T. -0.00 min
 Lab File: BG043423.D
 Acq: 31 Oct 2019 5:46

Tgt Ion	Resp	Lower	Upper
136	147774		
137	9.7	8.2	12.2
54	7.2	5.4	8.2
68	3.6	3.3	4.9

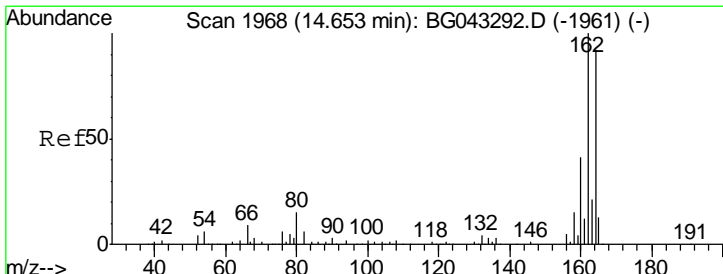
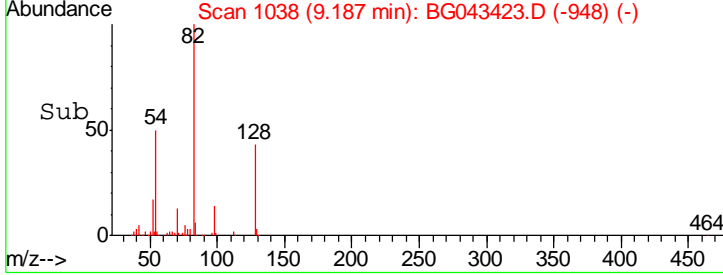
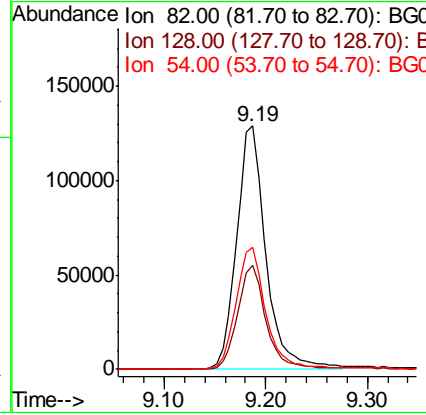
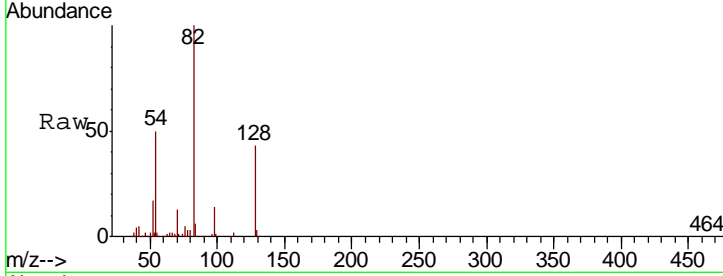




#23
 Nitrobenzene-d5
 Concen: 90.052 ng
 RT: 9.19 min Scan# 1038
 Delta R.T. -0.00 min
 Lab File: BG043423.D
 Acq: 31 Oct 2019 5:46

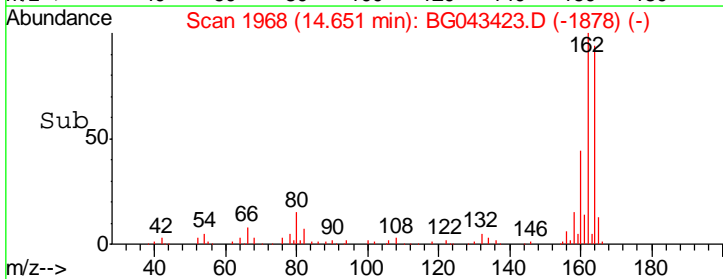
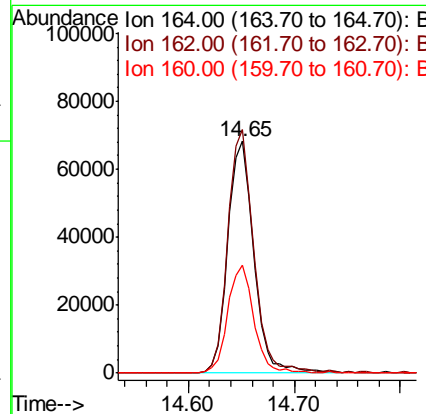
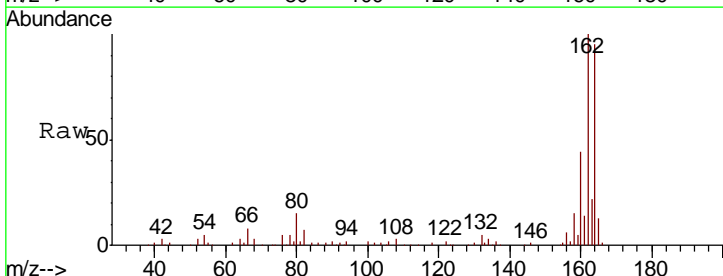
Instrument :
 BNA_G
 ClientSampled :
 CSA-2-1-10

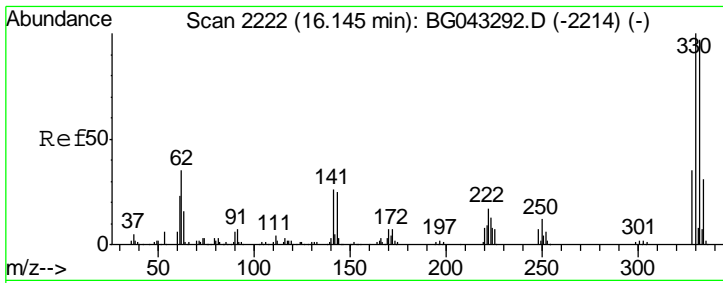
Tgt Ion	Resp	Lower	Upper
82	258121		
128	42.9	35.3	52.9
54	50.3	42.3	63.5



#39
 Acenaphthene-d10
 Concen: 20.000 ng
 RT: 14.65 min Scan# 1968
 Delta R.T. -0.00 min
 Lab File: BG043423.D
 Acq: 31 Oct 2019 5:46

Tgt Ion	Resp	Lower	Upper
164	116858		
162	105.0	87.0	130.4
160	46.3	35.5	53.3

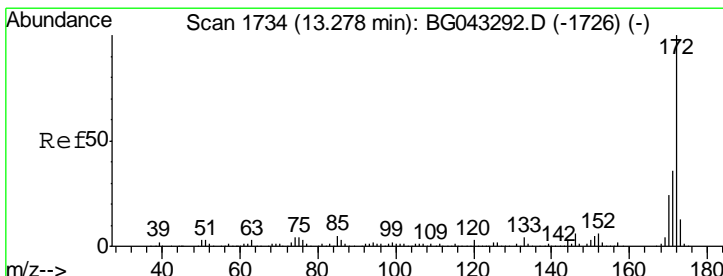
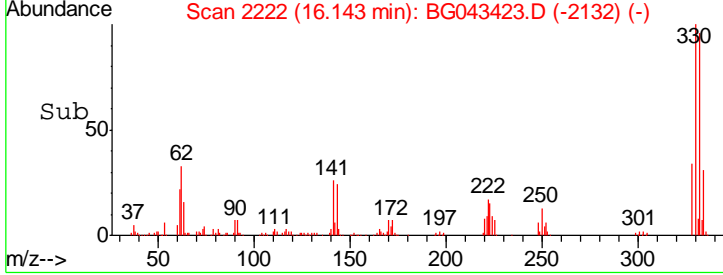
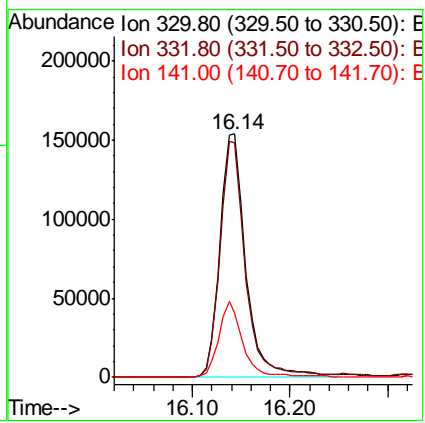
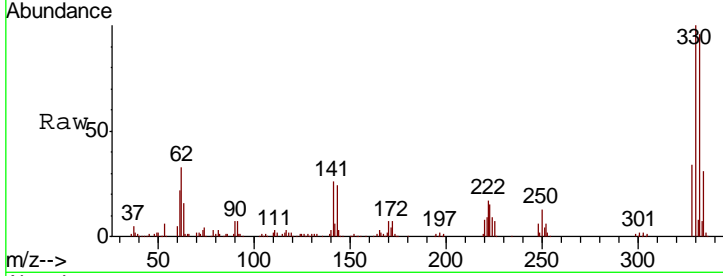




#42
 2,4,6-Tribromophenol
 Concen: 127.831 ng
 RT: 16.14 min Scan# 2222
 Delta R.T. -0.00 min
 Lab File: BG043423.D
 Acq: 31 Oct 2019 5:46

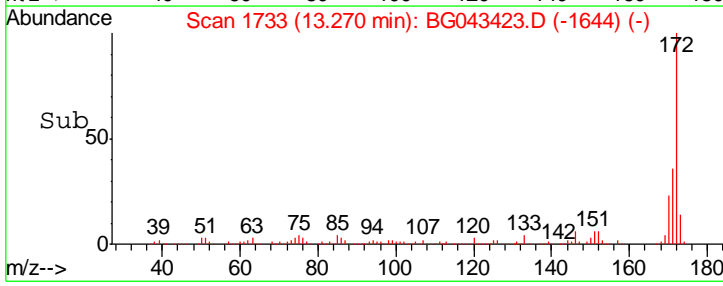
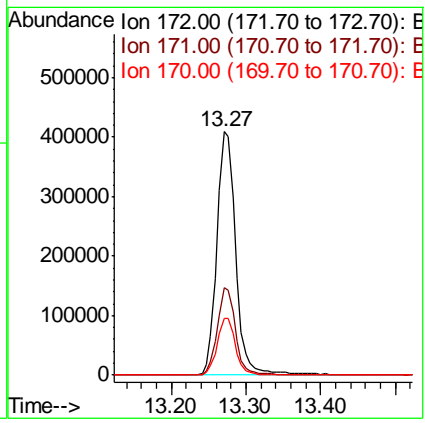
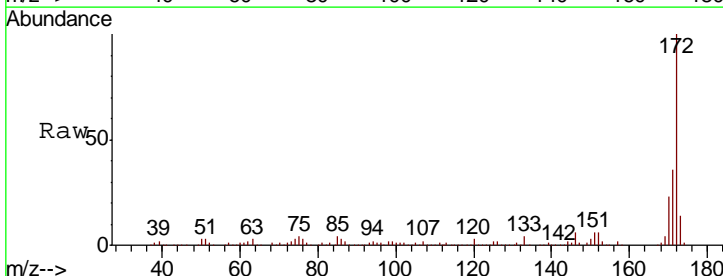
Instrument :
 BNA_G
 ClientSampleId :
 CSA-2-1-10

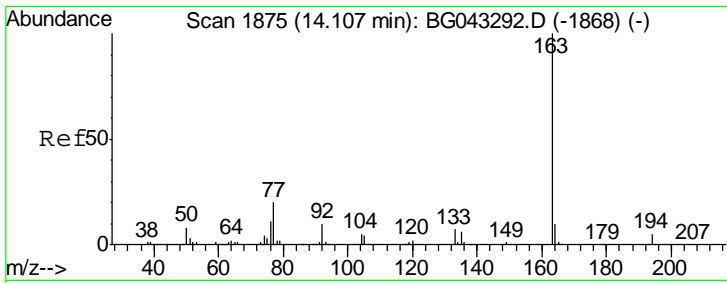
Tgt Ion	Resp	Lower	Upper
330	100		
332	95.3	76.4	114.6
141	28.6	21.4	32.0



#45
 2-Fluorobiphenyl
 Concen: 84.973 ng
 RT: 13.27 min Scan# 1733
 Delta R.T. -0.01 min
 Lab File: BG043423.D
 Acq: 31 Oct 2019 5:46

Tgt Ion	Resp	Lower	Upper
172	100		
171	36.0	28.5	42.7
170	23.4	18.8	28.2

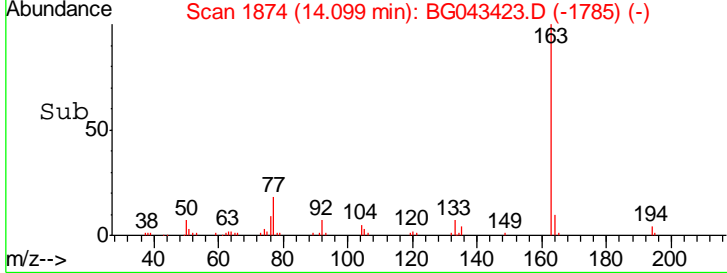
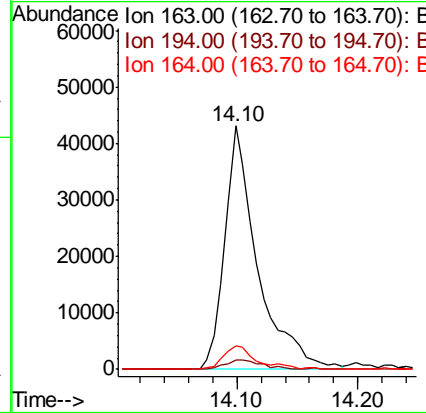
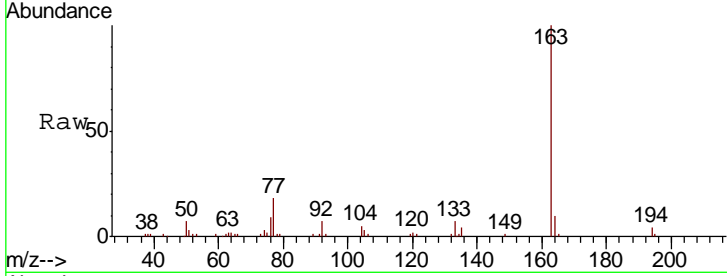




#50
 Dimethylphthalate
 Concen: 8.912 ng
 RT: 14.10 min Scan# 1874
 Delta R.T. -0.01 min
 Lab File: BG043423.D
 Acq: 31 Oct 2019 5:46

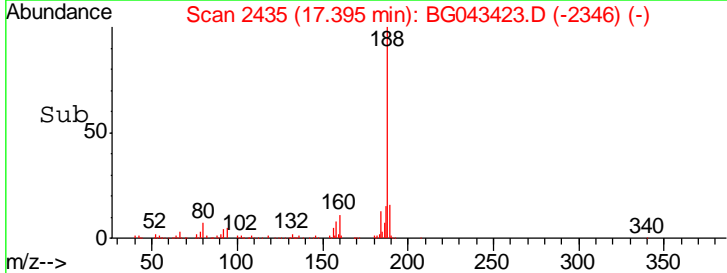
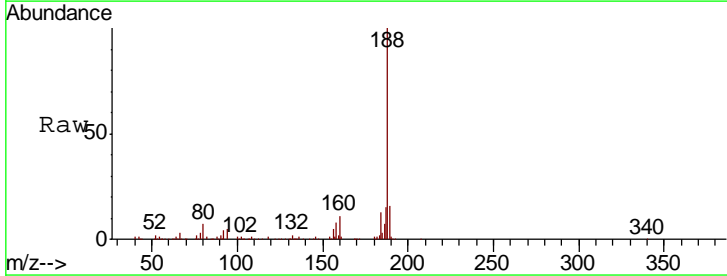
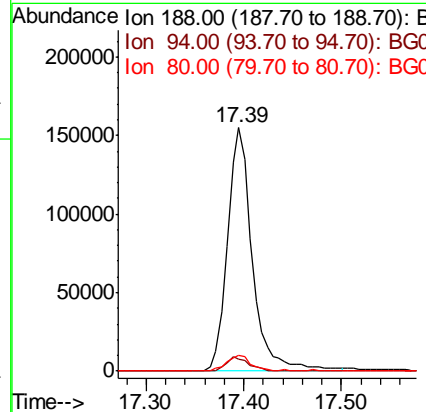
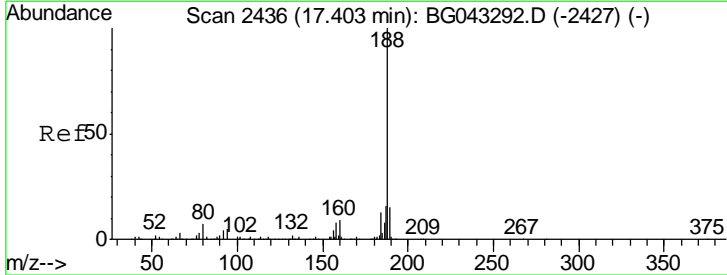
Instrument :
 BNA_G
 ClientSampled :
 CSA-2-1-10

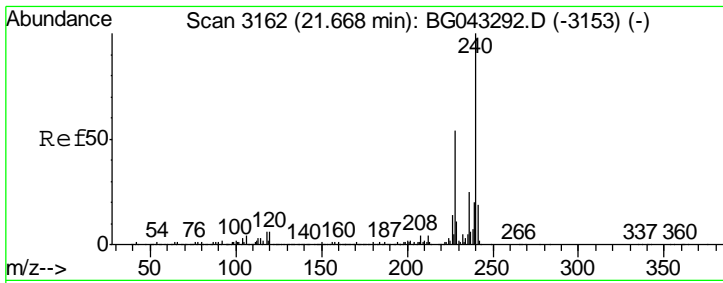
Tgt Ion	Resp	Lower	Upper
163	100		
194	3.9	3.7	5.5
164	9.9	8.1	12.1



#64
 Phenanthrene-d10
 Concen: 20.000 ng
 RT: 17.39 min Scan# 2435
 Delta R.T. -0.01 min
 Lab File: BG043423.D
 Acq: 31 Oct 2019 5:46

Tgt Ion	Resp	Lower	Upper
188	100		
94	5.1	4.2	6.2
80	6.7	5.2	7.8

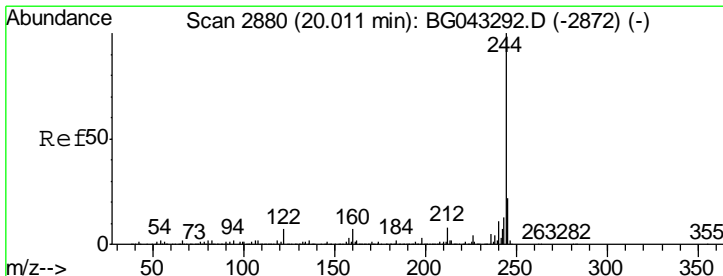
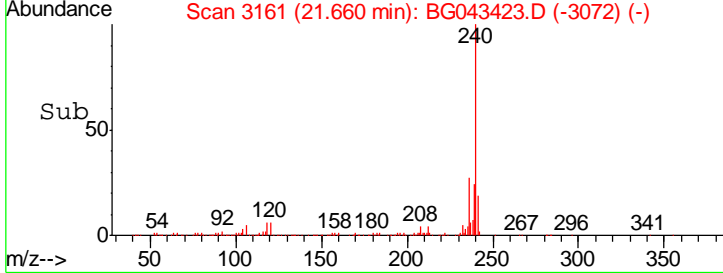
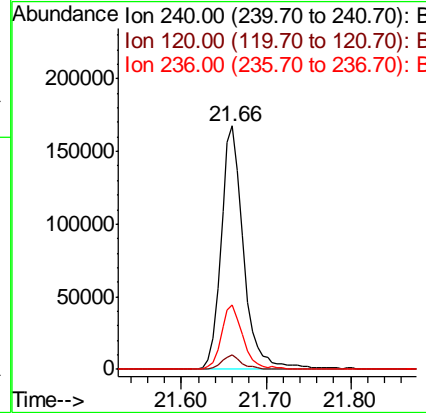
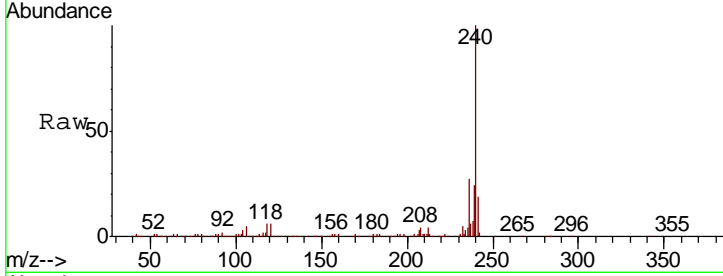




#76
 Chrysene-d12
 Concen: 20.000 ng
 RT: 21.66 min Scan# 3161
 Delta R.T. -0.01 min
 Lab File: BG043423.D
 Acq: 31 Oct 2019 5:46

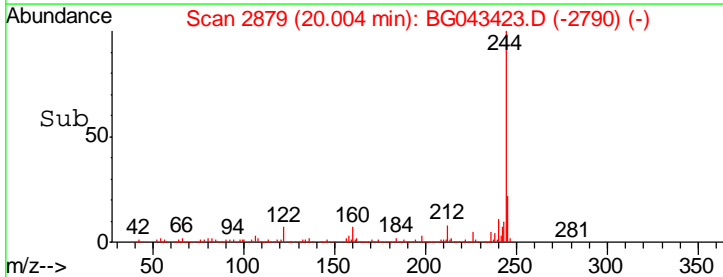
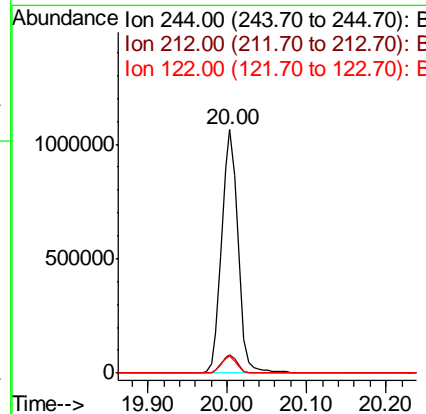
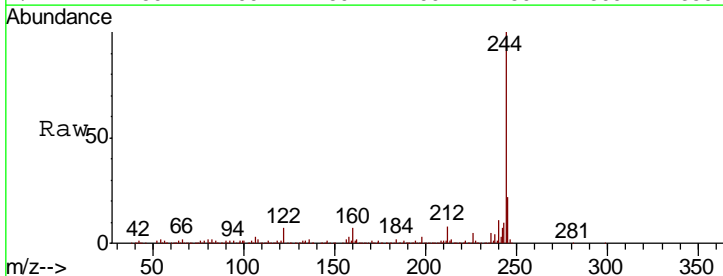
Instrument :
 BNA_G
ClientSampled :
 CSA-2-1-10

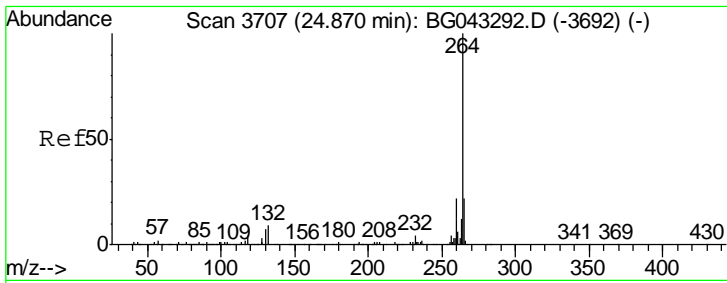
Tgt Ion	Resp	Lower	Upper
240	311620		
120	5.7	4.6	7.0
236	26.6	20.2	30.4



#79
 Terphenyl-d14
 Concen: 91.479 ng
 RT: 20.00 min Scan# 2879
 Delta R.T. -0.01 min
 Lab File: BG043423.D
 Acq: 31 Oct 2019 5:46

Tgt Ion	Resp	Lower	Upper
244	1519507		
212	7.6	6.4	9.6
122	7.2	5.3	7.9





#87
 Perylene-d12
 Concen: 20.000 ng
 RT: 24.86 min Scan# 3705
 Delta R.T. -0.01 min
 Lab File: BG043423.D
 Acq: 31 Oct 2019 5:46

Instrument :
 BNA_G
ClientSampled :
 CSA-2-1-10

Tot Ion: 264 Resp: 359368

Ion	Ratio	Lower	Upper
264	100		
260	22.2	17.9	26.9
265	21.8	17.4	26.2

