

Data Path : Z:\svoasrv\HPCHEM1\BNA\_G\Data\BG103122\  
 Data File : BG055387.D  
 Acq On : 31 Oct 2022 20:36  
 Operator : CG/JU  
 Sample : N5332-02  
 Misc :  
 ALS Vial : 13 Sample Multiplier: 1

Instrument :  
 BNA\_G  
 ClientSampleId :  
 MH-4-WC

Quant Time: Nov 01 06:50:37 2022  
 Quant Method : Z:\svoasrv\HPCHEM1\BNA\_G\Methods\8270-BG102422.M  
 Quant Title : ASP BNA STANDARDS FOR 5 POINT CALIBRATION  
 QLast Update : Sat Oct 29 04:52:38 2022  
 Response via : Initial Calibration

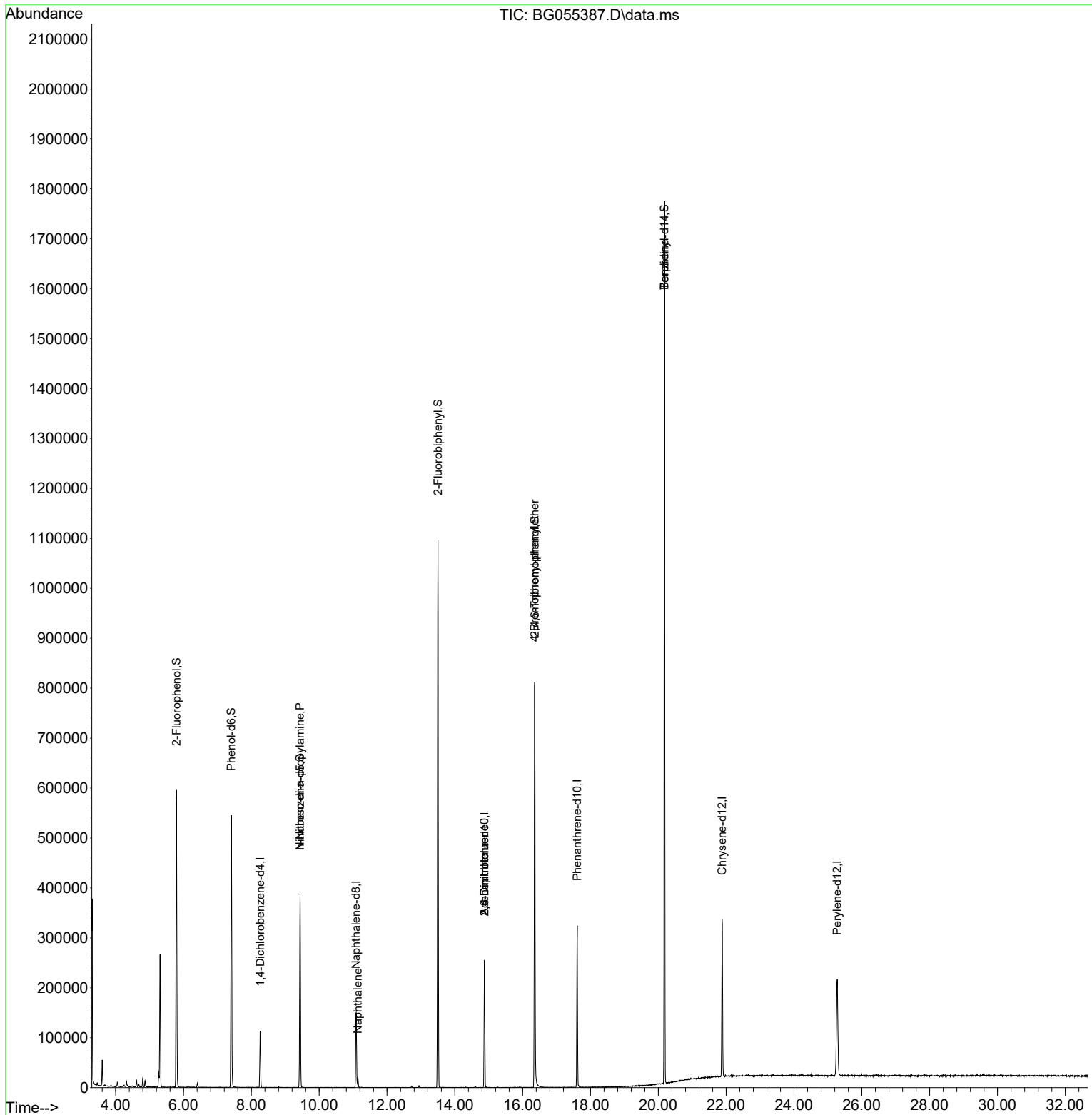
Compound	R.T.	QIon	Response	Conc	Units	Dev(Min)
Internal Standards						
1) 1,4-Dichlorobenzene-d4	8.259	152	33403	20.000	ng	0.00
21) Naphthalene-d8	11.085	136	139187	20.000	ng	#-0.01
39) Acenaphthene-d10	14.869	164	94487	20.000	ng	-0.01
64) Phenanthrene-d10	17.607	188	208473	20.000	ng	# 0.00
76) Chrysene-d12	21.878	240	205087	20.000	ng	-0.01
86) Perylene-d12	25.274	264	219673	20.000	ng	-0.01
System Monitoring Compounds						
5) 2-Fluorophenol	5.791	112	279599	146.565	ng	0.00
7) Phenol-d6	7.407	99	339544	122.854	ng	0.00
23) Nitrobenzene-d5	9.434	82	244135	89.565	ng	0.00
42) 2,4,6-Tribromophenol	16.356	330	194567	189.423	ng	0.00
45) 2-Fluorobiphenyl	13.500	172	584953	101.329	ng	-0.01
79) Terphenyl-d14	20.180	244	879076	89.057	ng	0.00
Target Compounds						
19) n-Nitroso-di-n-propyla...	9.434	70	32838	14.308	ng	# 77
31) Naphthalene	11.138	128	17944	2.417	ng	99
51) 2,6-Dinitrotoluene	14.869	165	12328	8.166	ng	# 19
57) 2,4-Dinitrotoluene	14.869	165	12328	5.628	ng	# 18
67) 4-Bromophenyl-phenylether	16.350	248	12024	5.937	ng	# 1
77) Benzidine	20.180	184	12549	2.527	ng	# 89

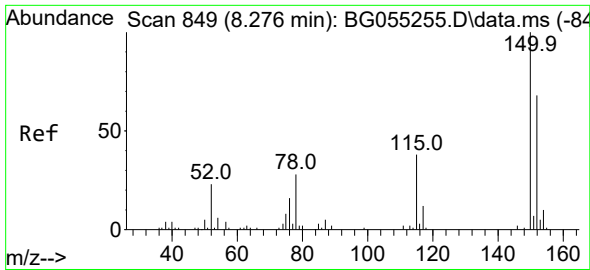
(#) = qualifier out of range (m) = manual integration (+) = signals summed

Data Path : Z:\svoasrv\HPCHEM1\BNA\_G\Data\BG103122\  
 Data File : BG055387.D  
 Acq On : 31 Oct 2022 20:36  
 Operator : CG/JU  
 Sample : N5332-02  
 Misc :  
 ALS Vial : 13 Sample Multiplier: 1

Instrument :  
 BNA\_G  
 ClientSampleId :  
 MH-4-WC

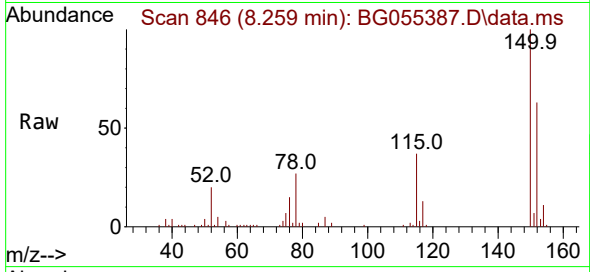
Quant Time: Nov 01 06:50:37 2022  
 Quant Method : Z:\svoasrv\HPCHEM1\BNA\_G\Methods\8270-BG102422.M  
 Quant Title : ASP BNA STANDARDS FOR 5 POINT CALIBRATION  
 QLast Update : Sat Oct 29 04:52:38 2022  
 Response via : Initial Calibration



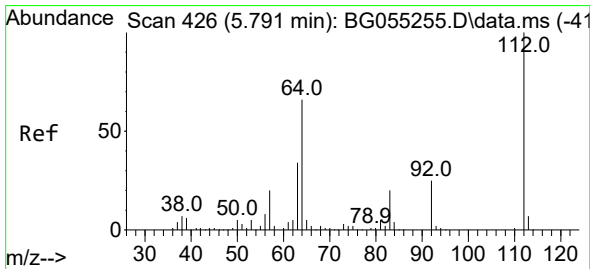
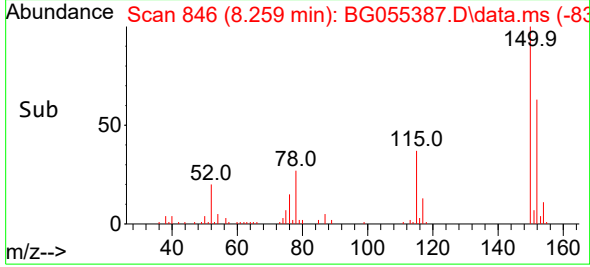
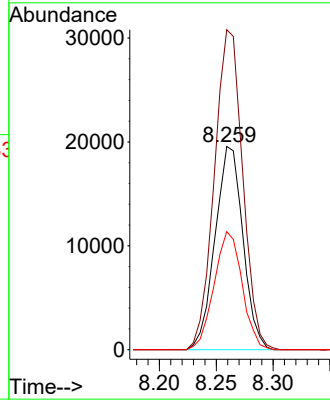


#1  
 1,4-Dichlorobenzene-d4  
 Concen: 20.000 ng  
 RT: 8.259 min Scan# 84  
 Delta R.T. -0.006 min  
 Lab File: BG055387.D  
 Acq: 31 Oct 2022 20:36

Instrument :  
 BNA\_G  
 ClientSampleId :  
 MH-4-WC

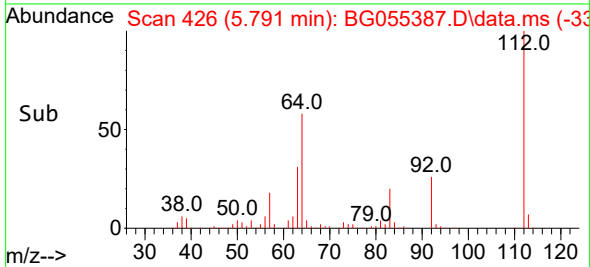
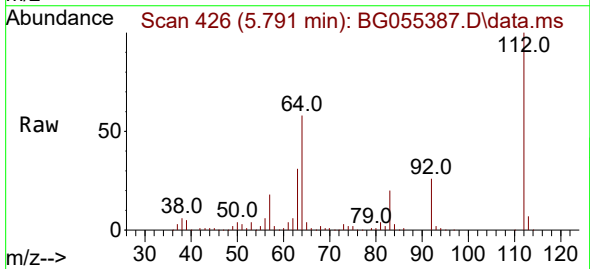
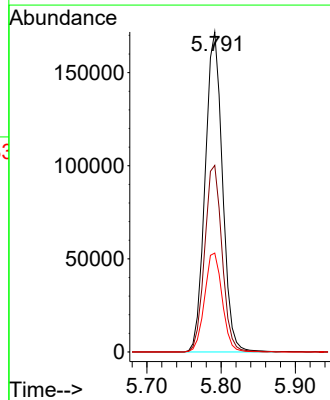


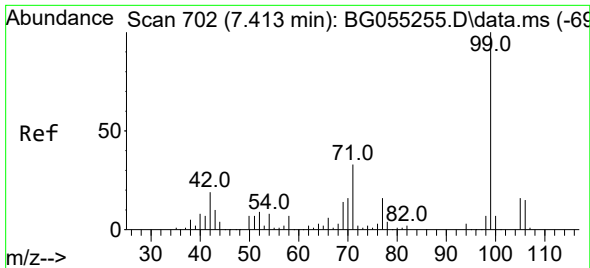
Tgt Ion:152 Resp: 33403  
 Ion Ratio Lower Upper  
 152 100  
 150 157.5 118.2 177.4  
 115 58.1 44.5 66.7



#5  
 2-Fluorophenol  
 Concen: 146.565 ng  
 RT: 5.791 min Scan# 426  
 Delta R.T. 0.006 min  
 Lab File: BG055387.D  
 Acq: 31 Oct 2022 20:36

Tgt Ion:112 Resp: 279599  
 Ion Ratio Lower Upper  
 112 100  
 64 58.3 52.6 78.8  
 63 30.9 27.1 40.7

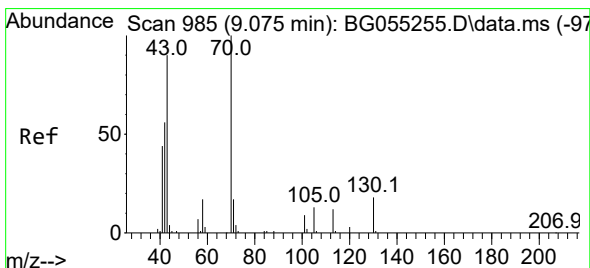
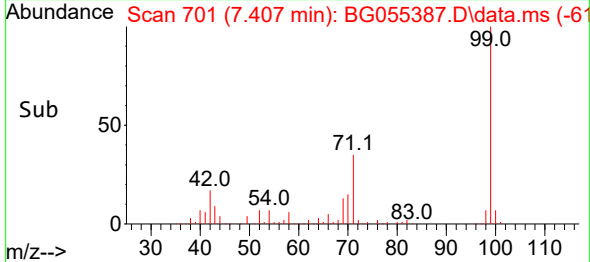
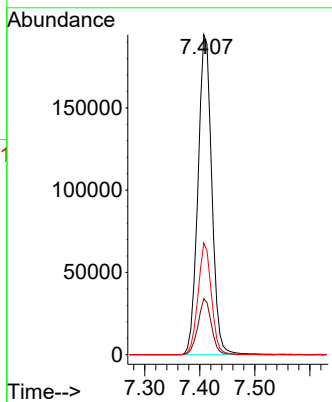
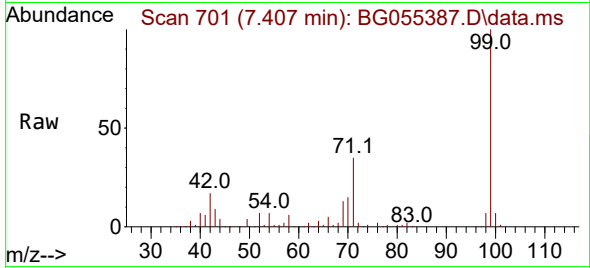




#7  
Phenol-d6  
Concen: 122.854 ng  
RT: 7.407 min Scan# 701  
Delta R.T. -0.006 min  
Lab File: BG055387.D  
Acq: 31 Oct 2022 20:36

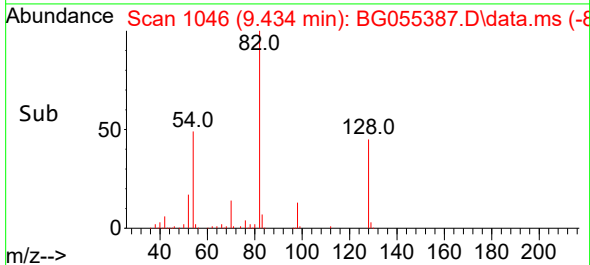
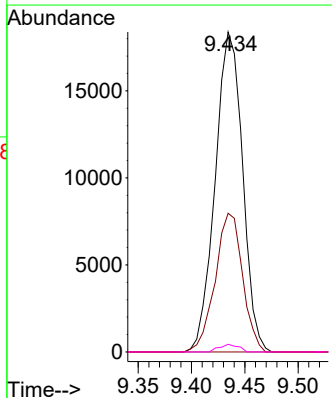
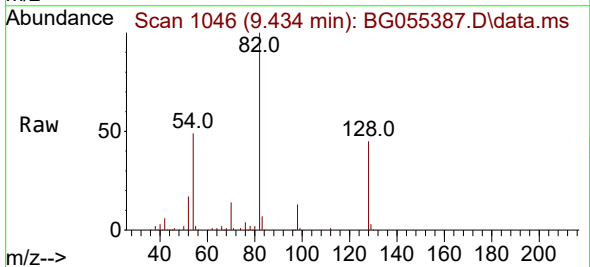
Instrument :  
BNA\_G  
ClientSampleId :  
MH-4-WC

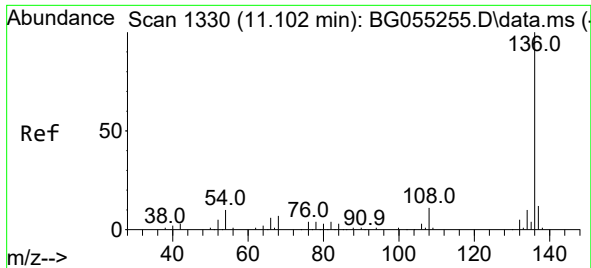
Tgt Ion: 99 Resp: 339544  
Ion Ratio Lower Upper  
99 100  
42 17.5 15.2 22.8  
71 34.9 26.2 39.4



#19  
n-Nitroso-di-n-propylamine  
Concen: 14.308 ng  
RT: 9.434 min Scan# 1046  
Delta R.T. 0.364 min  
Lab File: BG055387.D  
Acq: 31 Oct 2022 20:36

Tgt Ion: 70 Resp: 32838  
Ion Ratio Lower Upper  
70 100  
42 43.4 45.8 68.6#  
101 0.0 7.4 11.0#  
130 2.4 14.1 21.1#



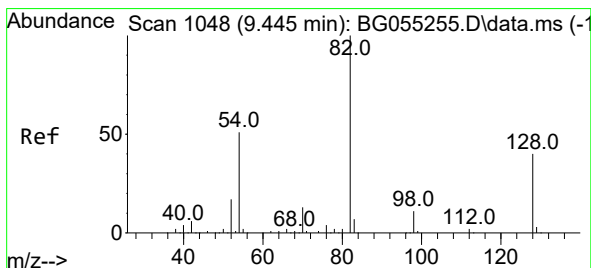
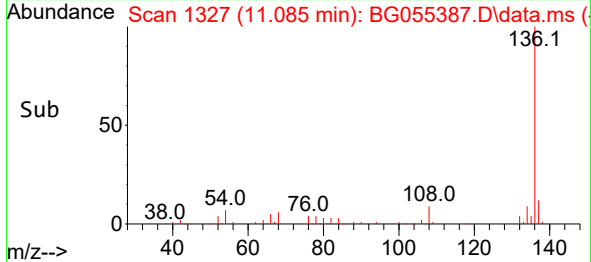
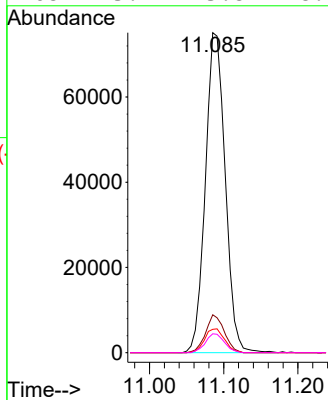
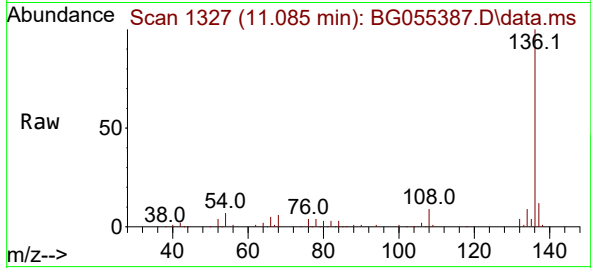


#21  
 Naphthalene-d8  
 Concen: 20.000 ng  
 RT: 11.085 min Scan# 11  
 Delta R.T. -0.012 min  
 Lab File: BG055387.D  
 Acq: 31 Oct 2022 20:36

Instrument :  
 BNA\_G  
 ClientSampleId :  
 MH-4-WC

Tgt Ion:136 Resp: 139187

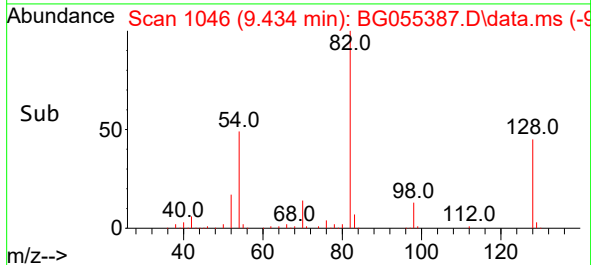
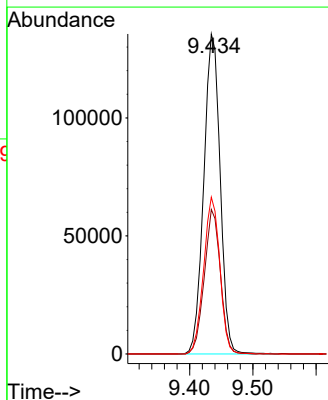
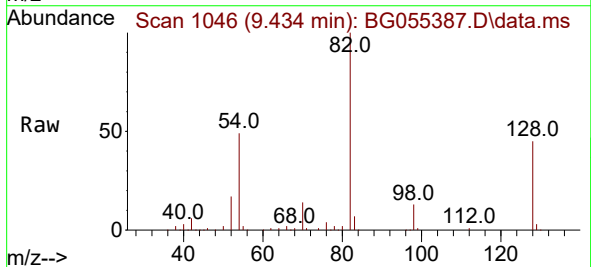
Ion	Ratio	Lower	Upper
136	100		
137	11.8	9.2	13.8
54	7.3	7.8	11.8#
68	5.9	5.8	8.6

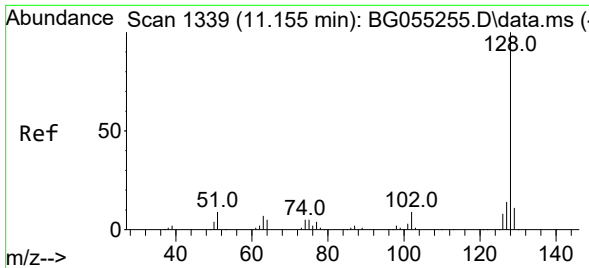


#23  
 Nitrobenzene-d5  
 Concen: 89.565 ng  
 RT: 9.434 min Scan# 1046  
 Delta R.T. -0.006 min  
 Lab File: BG055387.D  
 Acq: 31 Oct 2022 20:36

Tgt Ion: 82 Resp: 244135

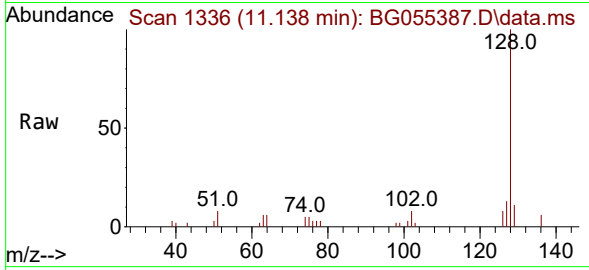
Ion	Ratio	Lower	Upper
82	100		
128	45.2	32.0	48.0
54	49.0	40.9	61.3



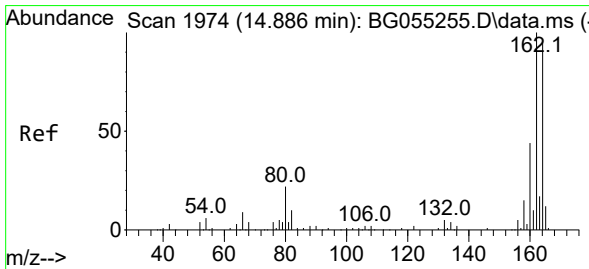
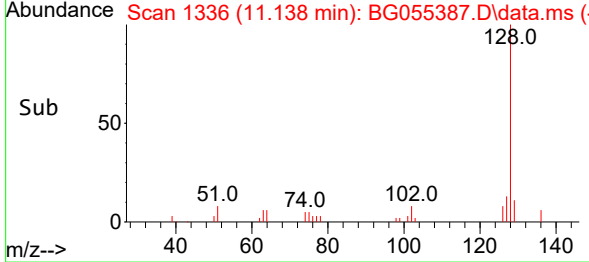
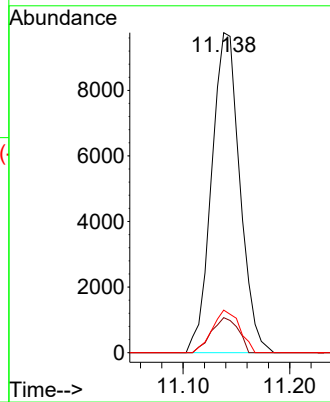


#31  
 Naphthalene  
 Concen: 2.417 ng  
 RT: 11.138 min Scan# 11  
 Delta R.T. -0.012 min  
 Lab File: BG055387.D  
 Acq: 31 Oct 2022 20:36

Instrument :  
 BNA\_G  
 ClientSampleId :  
 MH-4-WC

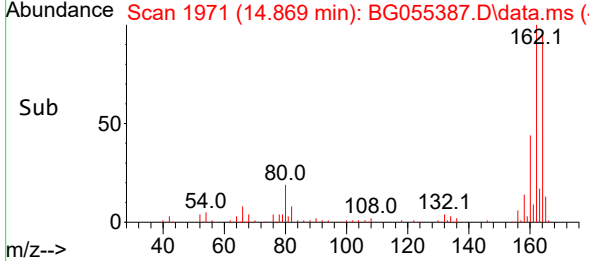
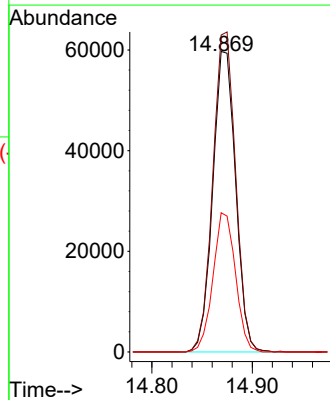
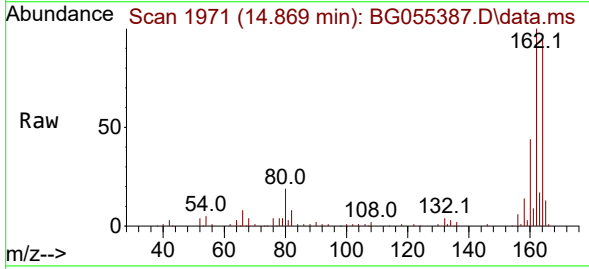


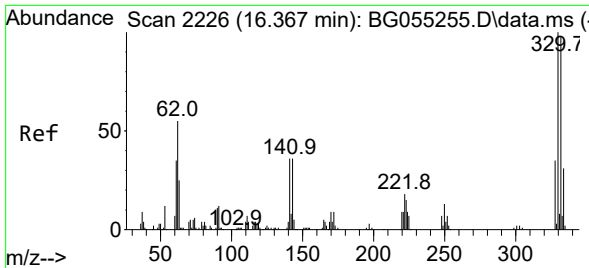
Tgt Ion:128 Resp: 17944  
 Ion Ratio Lower Upper  
 128 100  
 129 10.9 9.0 13.6  
 127 13.3 11.1 16.7



#39  
 Acenaphthene-d10  
 Concen: 20.000 ng  
 RT: 14.869 min Scan# 1971  
 Delta R.T. -0.012 min  
 Lab File: BG055387.D  
 Acq: 31 Oct 2022 20:36

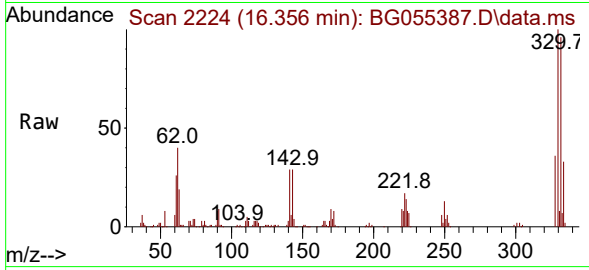
Tgt Ion:164 Resp: 94487  
 Ion Ratio Lower Upper  
 164 100  
 162 105.5 84.0 126.0  
 160 46.3 36.7 55.1



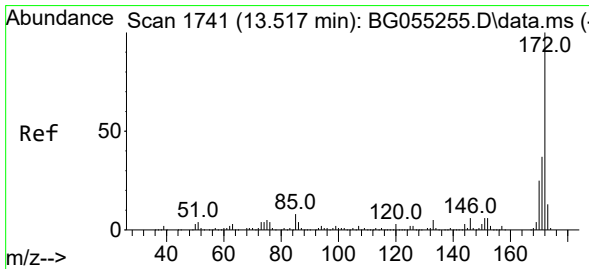
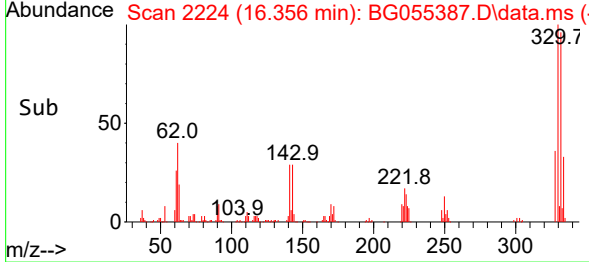
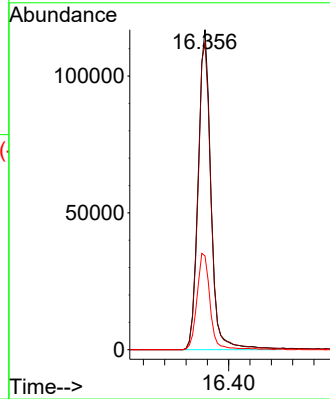


#42  
 2,4,6-Tribromophenol  
 Concen: 189.423 ng  
 RT: 16.356 min Scan# 21  
 Delta R.T. -0.006 min  
 Lab File: BG055387.D  
 Acq: 31 Oct 2022 20:36

Instrument :  
 BNA\_G  
 ClientSampleId :  
 MH-4-WC

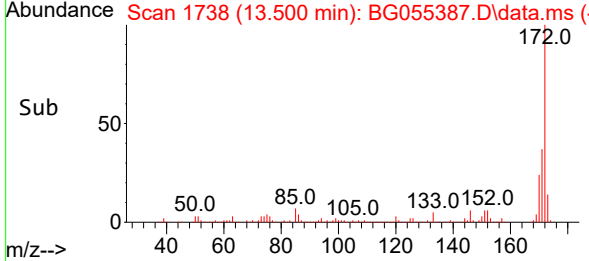
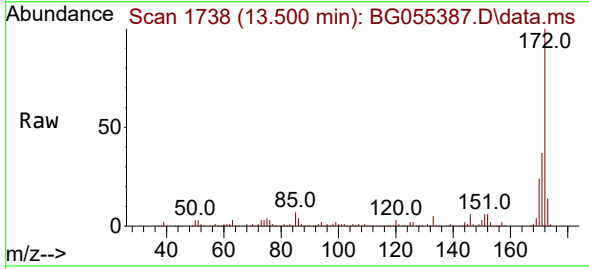
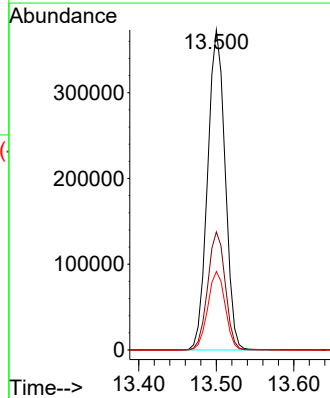


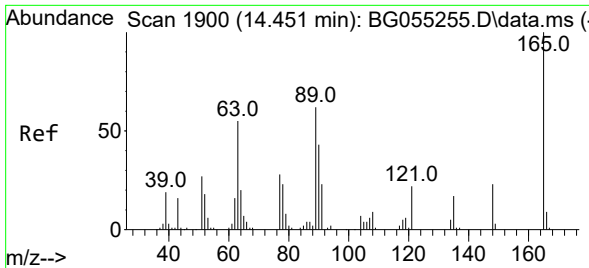
Tgt Ion:330 Resp: 194567  
 Ion Ratio Lower Upper  
 330 100  
 332 97.8 77.4 116.0  
 141 30.7 29.8 44.8



#45  
 2-Fluorobiphenyl  
 Concen: 101.329 ng  
 RT: 13.500 min Scan# 1738  
 Delta R.T. -0.012 min  
 Lab File: BG055387.D  
 Acq: 31 Oct 2022 20:36

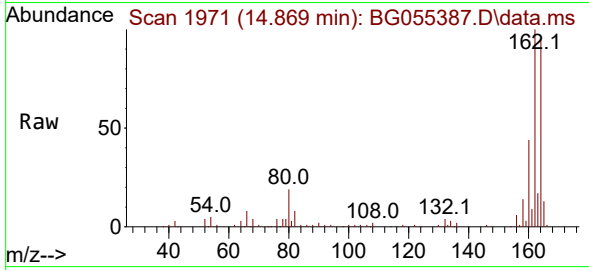
Tgt Ion:172 Resp: 584953  
 Ion Ratio Lower Upper  
 172 100  
 171 36.9 29.7 44.5  
 170 24.5 20.2 30.2





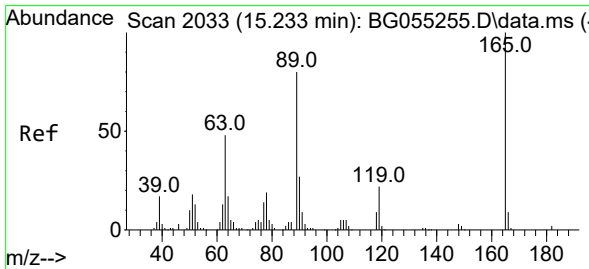
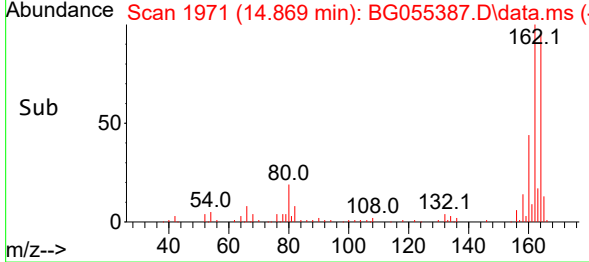
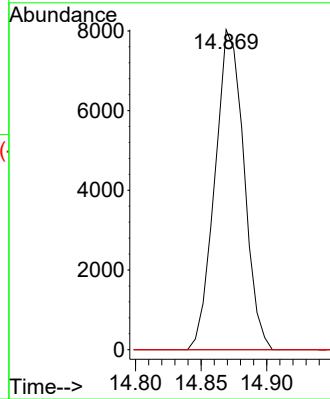
#51  
 2,6-Dinitrotoluene  
 Concen: 8.166 ng  
 RT: 14.869 min Scan# 1971  
 Delta R.T. 0.417 min  
 Lab File: BG055387.D  
 Acq: 31 Oct 2022 20:36

Instrument :  
 BNA\_G  
 ClientSampleId :  
 MH-4-WC



Tgt Ion:165 Resp: 12328

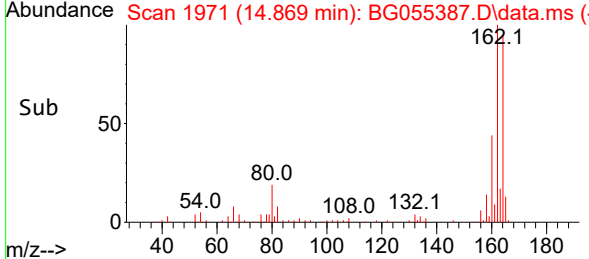
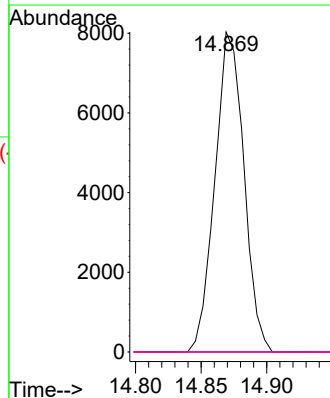
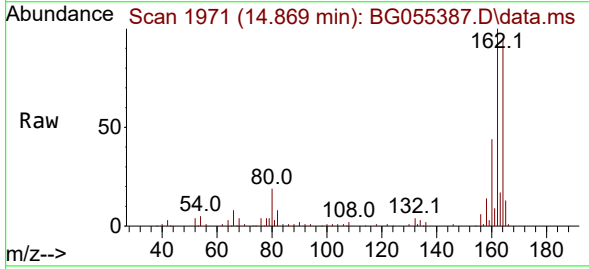
Ion	Ratio	Lower	Upper
165	100		
63	0.0	49.2	73.8#
89	0.0	49.9	74.9#



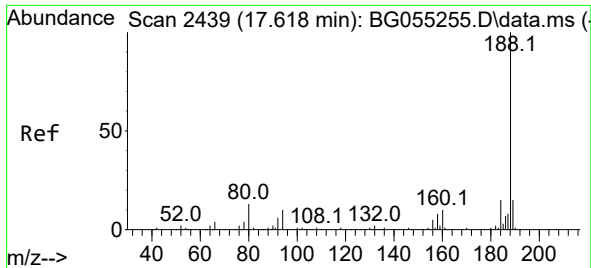
#57  
 2,4-Dinitrotoluene  
 Concen: 5.628 ng  
 RT: 14.869 min Scan# 1971  
 Delta R.T. -0.364 min  
 Lab File: BG055387.D  
 Acq: 31 Oct 2022 20:36

Tgt Ion:165 Resp: 12328

Ion	Ratio	Lower	Upper
165	100		
63	0.0	38.9	58.3#
89	0.0	64.2	96.4#
182	0.0	1.8	2.6#





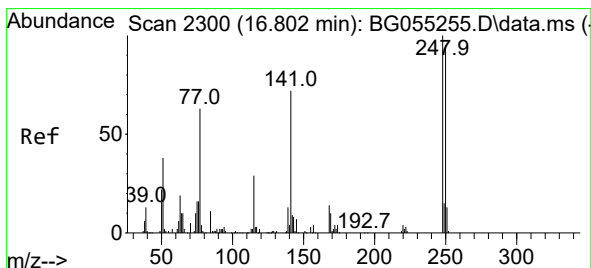
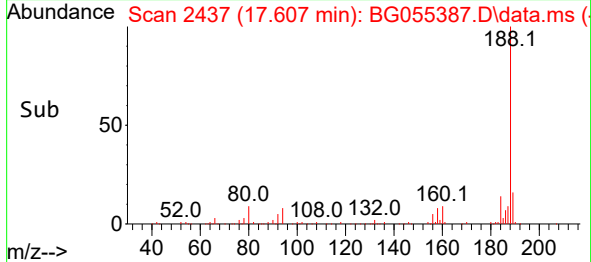
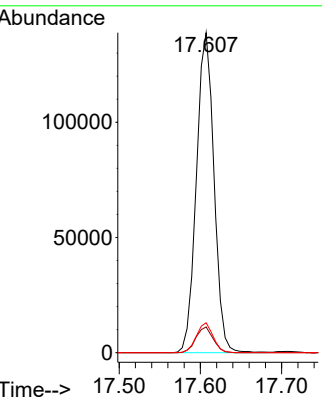
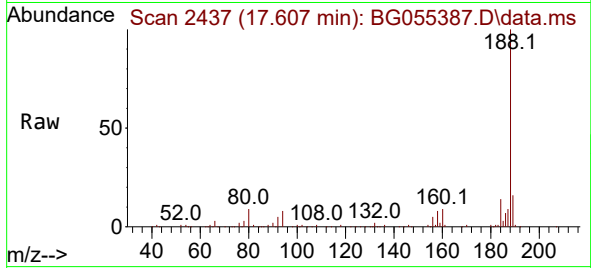


#64  
 Phenanthrene-d10  
 Concen: 20.000 ng  
 RT: 17.607 min Scan# 24  
 Delta R.T. -0.006 min  
 Lab File: BG055387.D  
 Acq: 31 Oct 2022 20:36

Instrument :  
 BNA\_G  
 ClientSampleId :  
 MH-4-WC

Tgt Ion:188 Resp: 208473

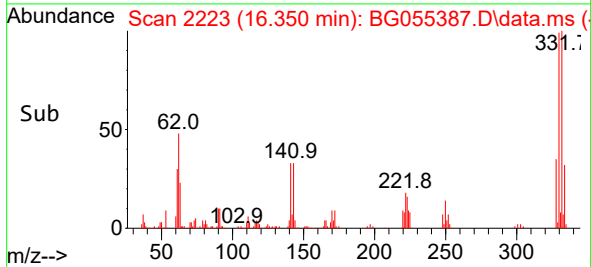
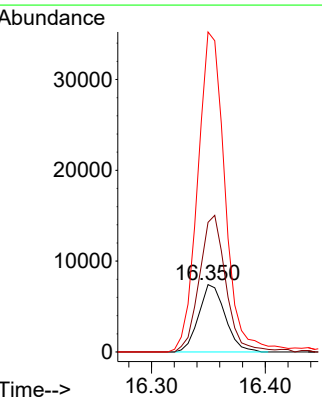
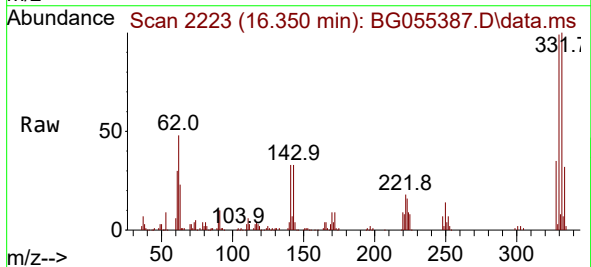
Ion	Ratio	Lower	Upper
188	100		
94	8.1	8.2	12.4#
80	9.3	10.1	15.1#

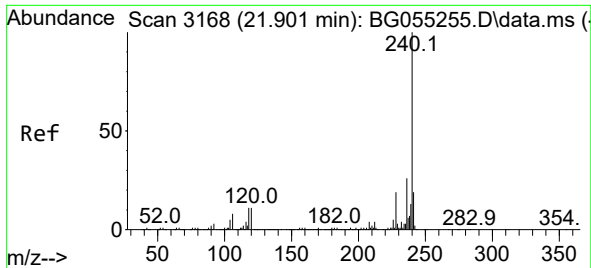


#67  
 4-Bromophenyl-phenylether  
 Concen: 5.937 ng  
 RT: 16.350 min Scan# 2223  
 Delta R.T. -0.446 min  
 Lab File: BG055387.D  
 Acq: 31 Oct 2022 20:36

Tgt Ion:248 Resp: 12024

Ion	Ratio	Lower	Upper
248	100		
250	192.6	76.0	114.0#
141	475.3	58.0	87.0#

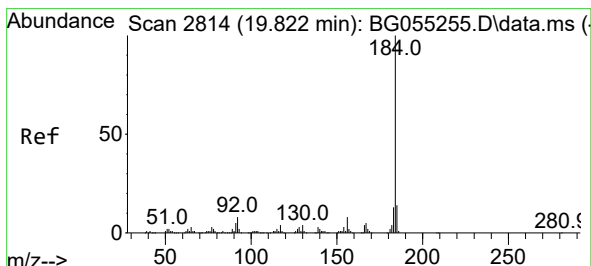
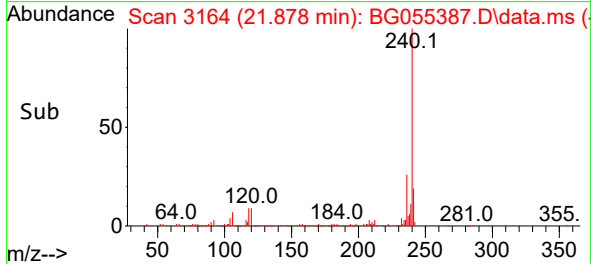
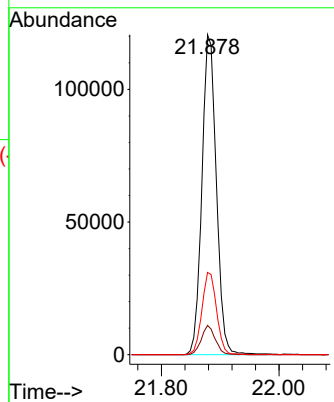
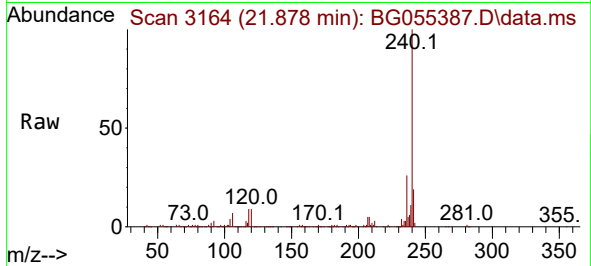




#76  
 Chrysene-d12  
 Concen: 20.000 ng  
 RT: 21.878 min Scan# 31  
 Delta R.T. -0.012 min  
 Lab File: BG055387.D  
 Acq: 31 Oct 2022 20:36

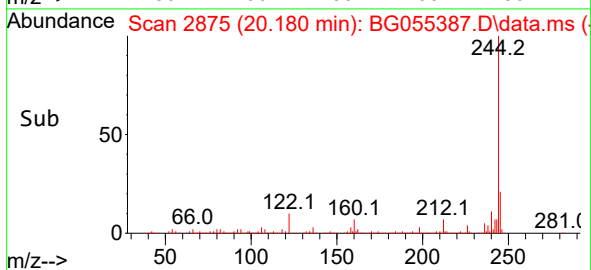
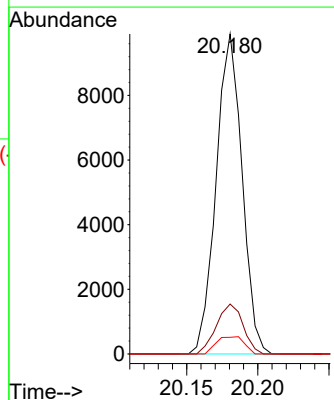
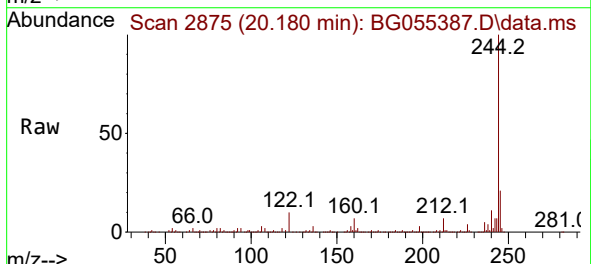
Instrument :  
 BNA\_G  
 ClientSampleId :  
 MH-4-WC

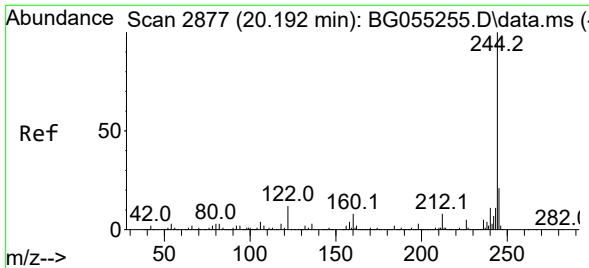
Tgt Ion:240 Resp: 205087  
 Ion Ratio Lower Upper  
 240 100  
 120 9.1 8.9 13.3  
 236 25.7 21.0 31.4



#77  
 Benzdine  
 Concen: 2.527 ng  
 RT: 20.180 min Scan# 2875  
 Delta R.T. 0.364 min  
 Lab File: BG055387.D  
 Acq: 31 Oct 2022 20:36

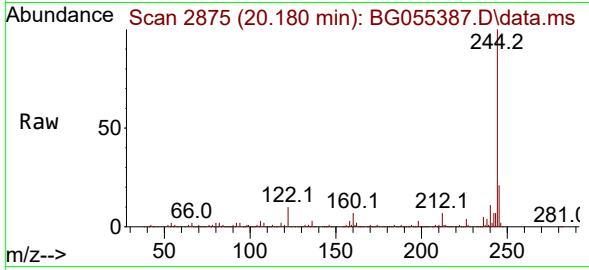
Tgt Ion:184 Resp: 12549  
 Ion Ratio Lower Upper  
 184 100  
 185 15.6 11.0 16.6  
 183 5.2 10.0 15.0#



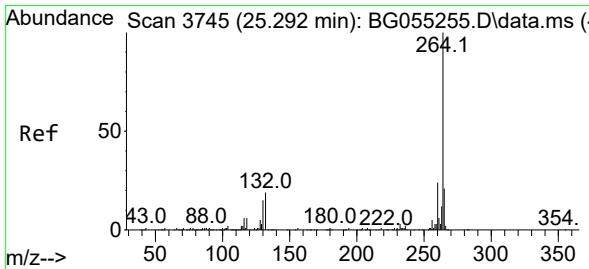
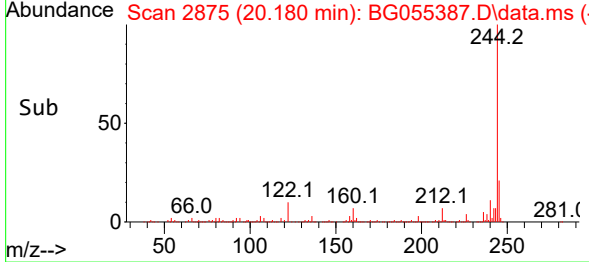
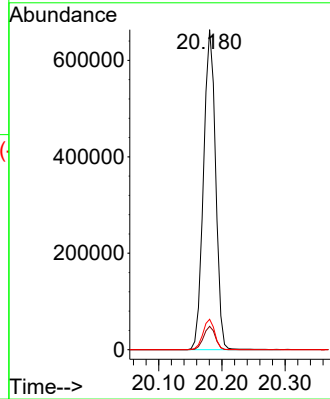


#79  
 Terphenyl-d14  
 Concen: 89.057 ng  
 RT: 20.180 min Scan# 21  
 Delta R.T. -0.006 min  
 Lab File: BG055387.D  
 Acq: 31 Oct 2022 20:36

Instrument :  
 BNA\_G  
 ClientSampleId :  
 MH-4-WC



Tgt Ion:244 Resp: 879076  
 Ion Ratio Lower Upper  
 244 100  
 212 7.3 6.0 9.0  
 122 9.5 9.6 14.4#



#86  
 Perylene-d12  
 Concen: 20.000 ng  
 RT: 25.274 min Scan# 3742  
 Delta R.T. -0.012 min  
 Lab File: BG055387.D  
 Acq: 31 Oct 2022 20:36

Tgt Ion:264 Resp: 219673  
 Ion Ratio Lower Upper  
 264 100  
 260 24.7 19.5 29.3  
 265 21.2 17.4 26.2

