

Data Path : Z:\HPCHEM1\BNA G\DATA\BG110117\  
 Data File : BG030631.D  
 Acq On : 1 Nov 2017 12:25  
 Operator : SJ/JU  
 Sample : PB103849TB  
 Misc :  
 ALS Vial : 20 Sample Multiplier: 1

Instrument :  
 BNA\_G  
 ClientSampleId :

Quant Time: Nov 01 17:36:38 2017  
 Quant Method : Z:\HPCHEM1\BNA G\METHODS\8270-BG101617.M  
 Quant Title : ASP BNA STANDARDS FOR 5 POINT CALIBRATION  
 QLast Update : Mon Oct 16 17:32:15 2017  
 Response via : Initial Calibration

Internal Standards	R.T.	QIon	Response	Conc	Units	Dev(Min)
1) 1,4-Dichlorobenzene-d4	8.16	152	67820	20.00	ng	-0.01
21) Naphthalene-d8	10.98	136	320425	20.00	ng	-0.01
38) Acenaphthene-d10	14.78	164	219358	20.00	ng	-0.01
63) Phenanthrene-d10	17.52	188	508827	20.00	ng	-0.01
75) Chrysene-d12	21.79	240	548547	20.00	ng	-0.01
86) Perylene-d12	25.09	264	548118	20.00	ng	-0.02
System Monitoring Compounds						
5) 2-Fluorophenol	5.72	112	483098	119.00	ng	0.00
7) Phenol-d6	7.32	99	646131	113.39	ng	0.00
23) Nitrobenzene-d5	9.32	82	371558	73.69	ng	-0.01
41) 2,4,6-Tribromophenol	16.26	330	322851	114.00	ng	-0.01
44) 2-Fluorobiphenyl	13.40	172	1137161	76.03	ng	-0.01
78) Terphenyl-d14	20.11	244	1709352	70.89	ng	-0.01

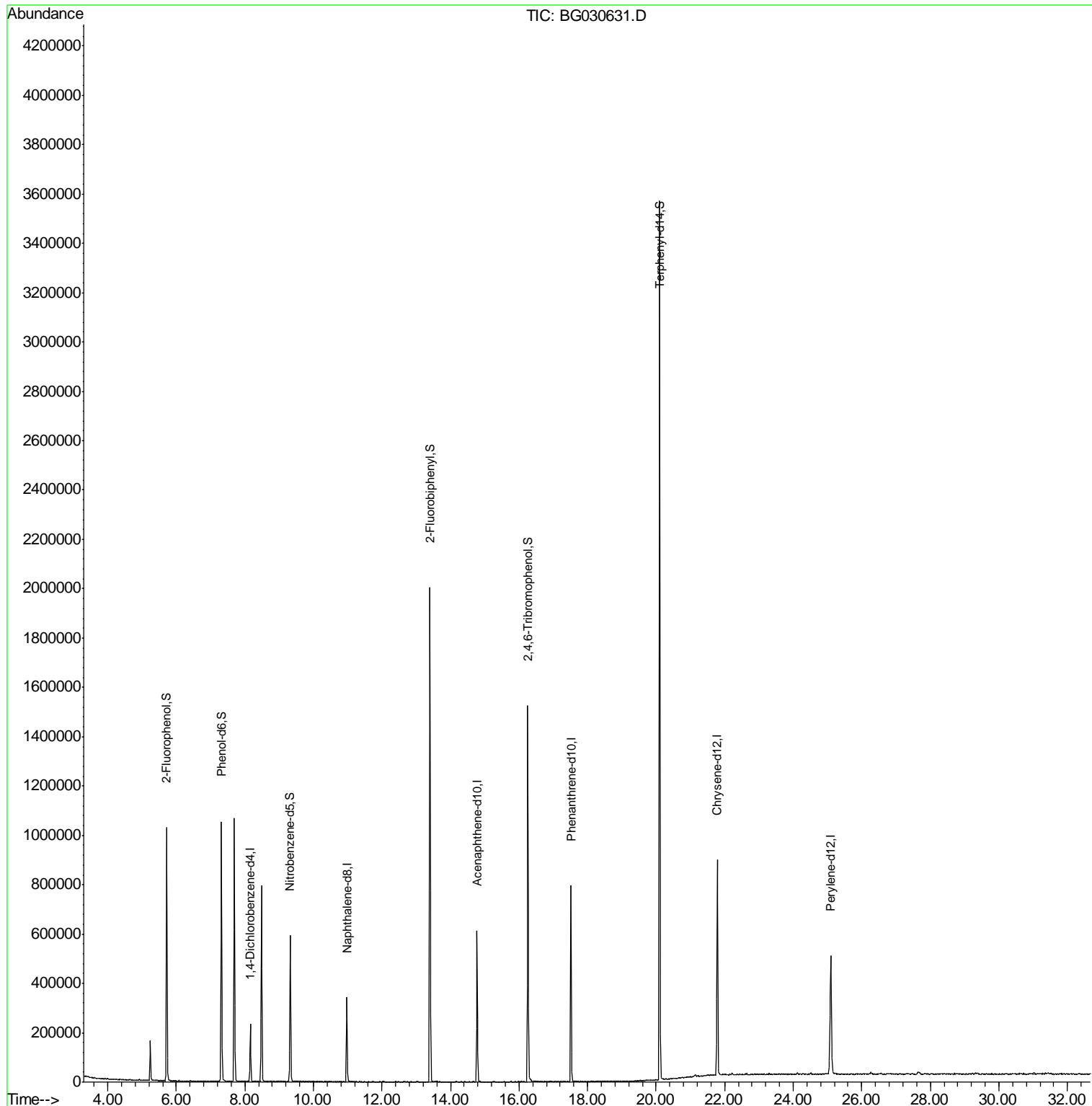
Target Compounds Qvalue

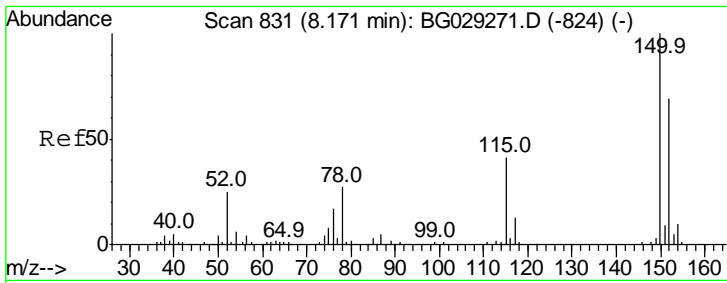
(#) = qualifier out of range (m) = manual integration (+) = signals summed

Data Path : Z:\HPCHEM1\BNA G\DATA\BG110117\  
 Data File : BG030631.D  
 Acq On : 1 Nov 2017 12:25  
 Operator : SJ/JU  
 Sample : PB103849TB  
 Misc :  
 ALS Vial : 20 Sample Multiplier: 1

Instrument :  
 BNA\_G  
 ClientSampled :

Quant Time: Nov 01 17:36:38 2017  
 Quant Method : Z:\HPCHEM1\BNA G\METHODS\8270-BG101617.M  
 Quant Title : ASP BNA STANDARDS FOR 5 POINT CALIBRATION  
 QLast Update : Mon Oct 16 17:32:15 2017  
 Response via : Initial Calibration

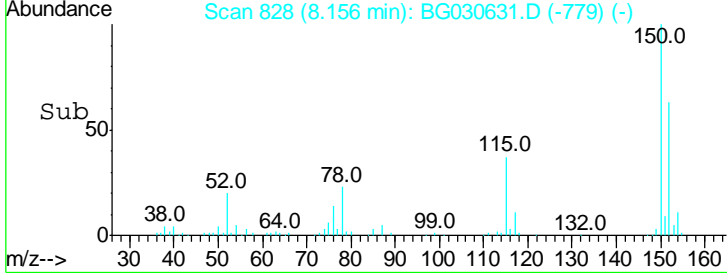
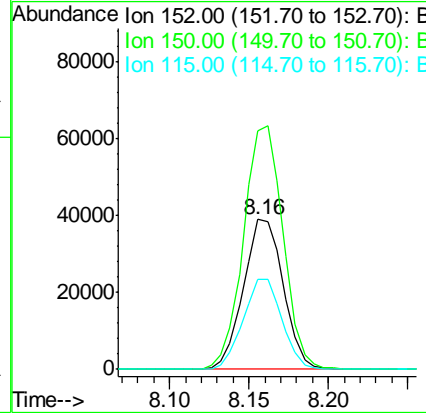
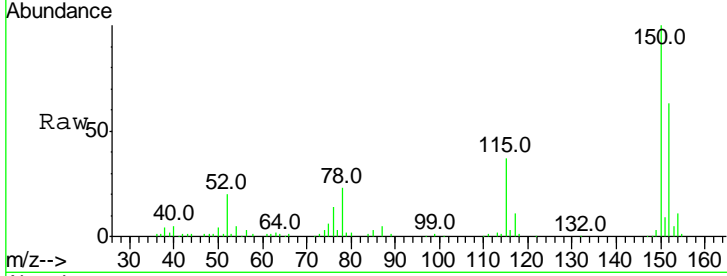




#1  
 1,4-Dichlorobenzene-d4  
 Concen: 20.000 ng  
 RT: 8.16 min Scan# 828  
 Delta R.T. -0.01 min  
 Lab File: BG030631.D  
 Acq: 1 Nov 2017 12:25

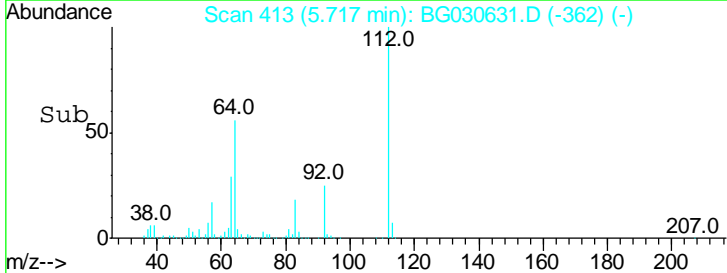
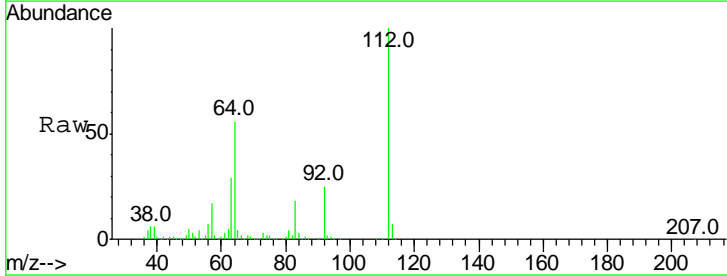
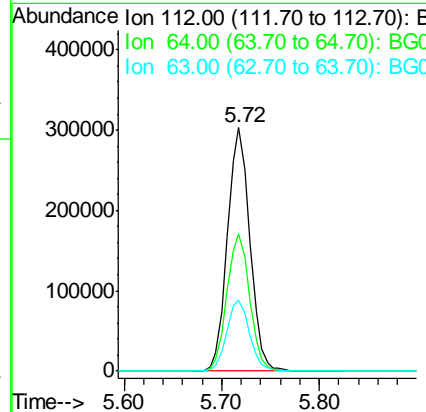
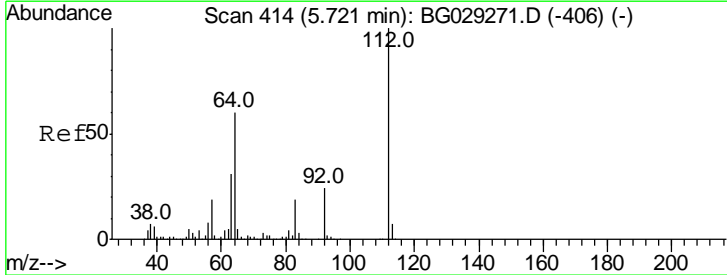
Instrument :  
 BNA\_G  
 ClientSampled :

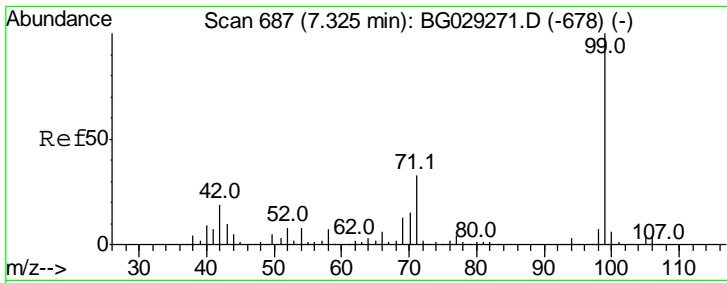
Tgt Ion	Resp	Lower	Upper
152	100		
150	159.2	126.6	189.8
115	59.6	53.0	79.4



#5  
 2-Fluorophenol  
 Concen: 118.997 ng  
 RT: 5.72 min Scan# 413  
 Delta R.T. -0.00 min  
 Lab File: BG030631.D  
 Acq: 1 Nov 2017 12:25

Tgt Ion	Resp	Lower	Upper
112	100		
64	56.4	56.3	84.5
63	29.2	30.1	45.1#

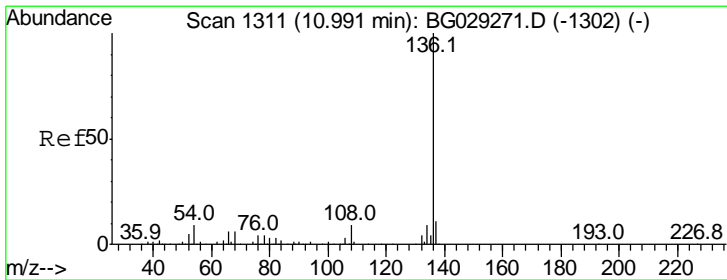
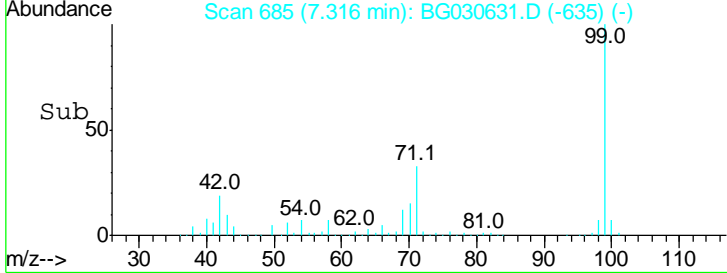
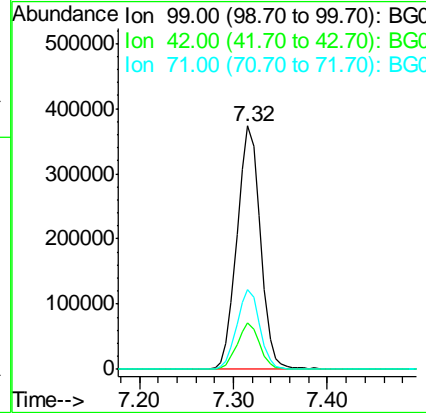
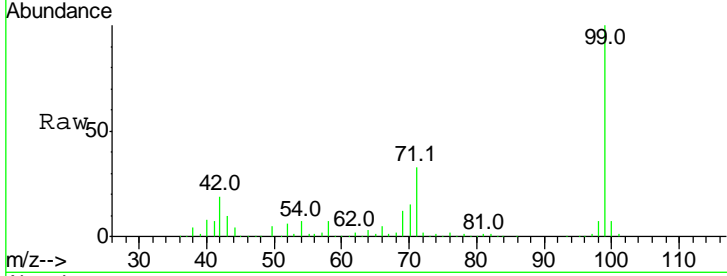




#7  
 Phenol-d6  
 Concen: 113.387 ng  
 RT: 7.32 min Scan# 685  
 Delta R.T. -0.01 min  
 Lab File: BG030631.D  
 Acq: 1 Nov 2017 12:25

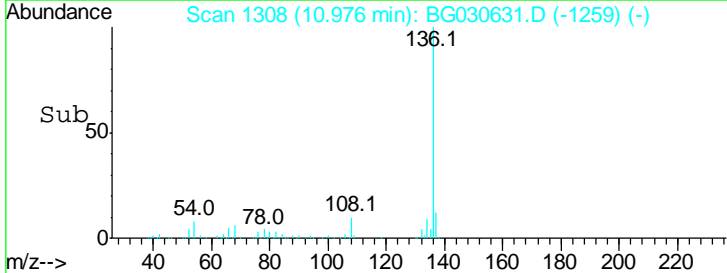
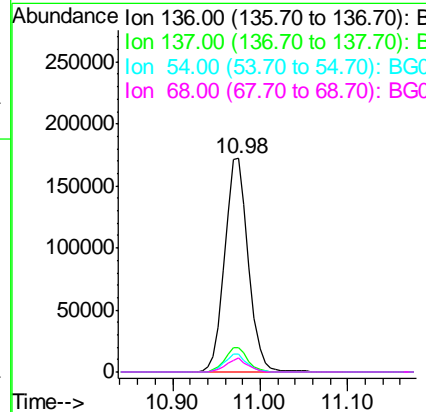
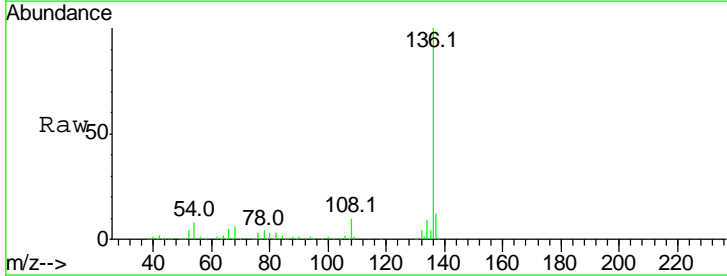
Instrument :  
 BNA\_G  
 ClientSampled :

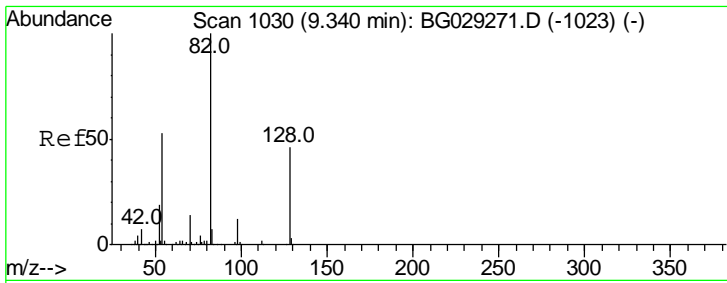
Tgt Ion	Resp	Lower	Upper
99	100		
42	19.1	14.1	21.1
71	32.7	26.1	39.1



#21  
 Naphthalene-d8  
 Concen: 20.000 ng  
 RT: 10.98 min Scan# 1308  
 Delta R.T. -0.01 min  
 Lab File: BG030631.D  
 Acq: 1 Nov 2017 12:25

Tgt Ion	Resp	Lower	Upper
136	100		
137	11.5	9.2	13.8
54	8.3	10.3	15.5#
68	6.3	4.5	6.7

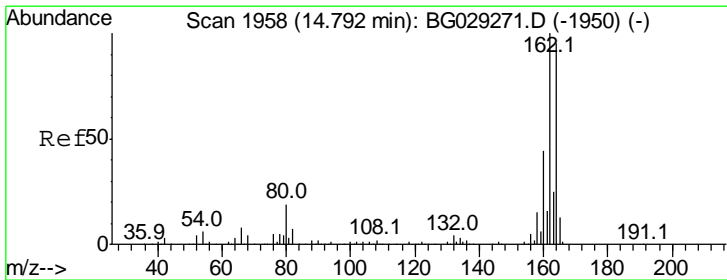
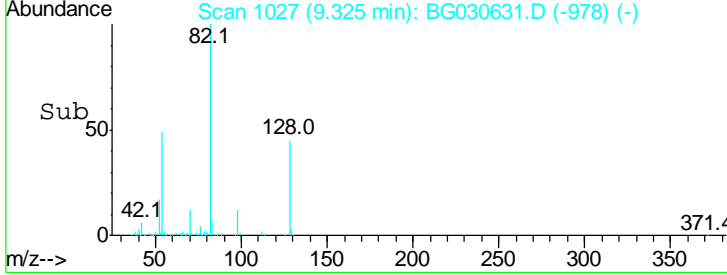
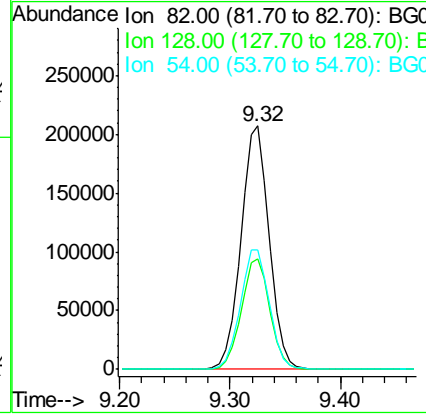
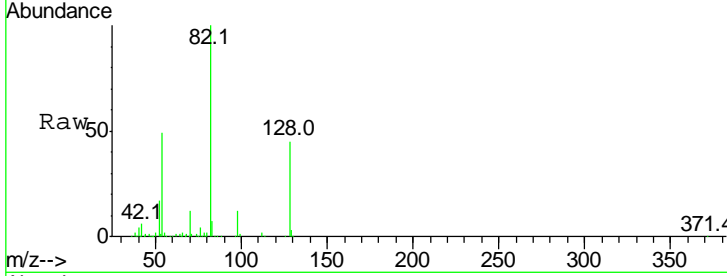




#23  
 Nitrobenzene-d5  
 Concen: 73.688 ng  
 RT: 9.32 min Scan# 1027  
 Delta R.T. -0.01 min  
 Lab File: BG030631.D  
 Acq: 1 Nov 2017 12:25

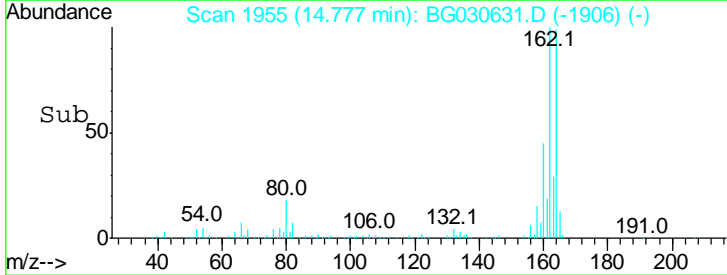
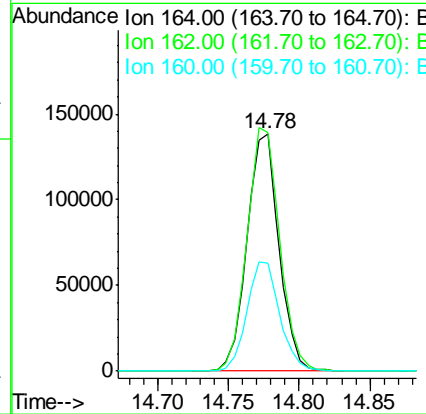
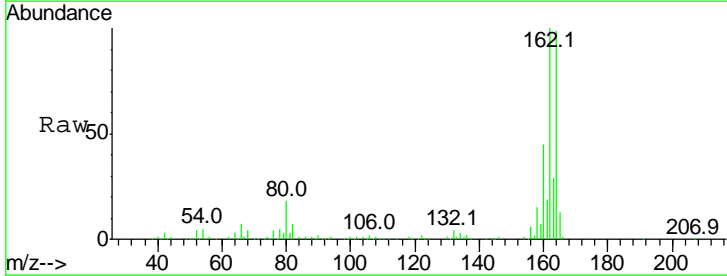
Instrument :  
 BNA\_G  
 ClientSampled :

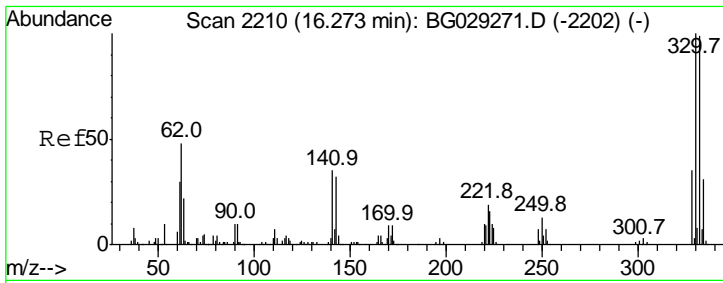
Tgt Ion	Resp	Lower	Upper
82	100		
128	45.4	29.7	44.5#
54	49.1	43.1	64.7



#38  
 Acenaphthene-d10  
 Concen: 20.000 ng  
 RT: 14.78 min Scan# 1955  
 Delta R.T. -0.01 min  
 Lab File: BG030631.D  
 Acq: 1 Nov 2017 12:25

Tgt Ion	Resp	Lower	Upper
164	100		
162	100.7	78.8	118.2
160	45.3	35.4	53.0

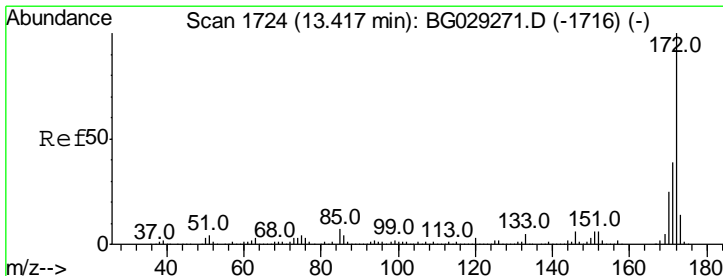
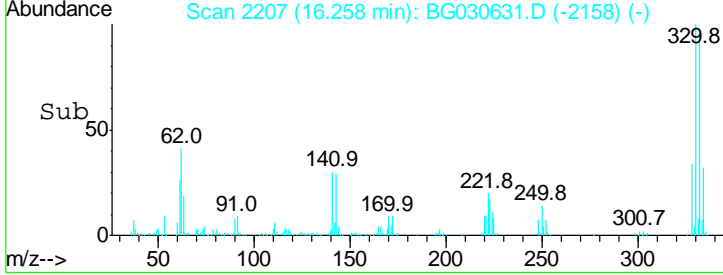
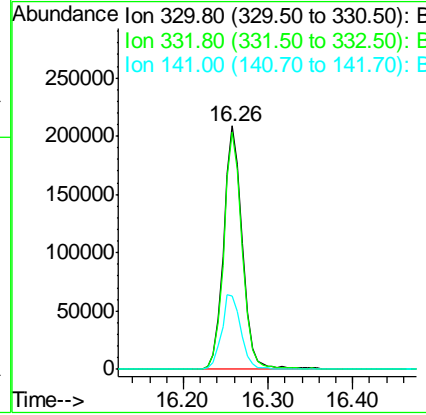
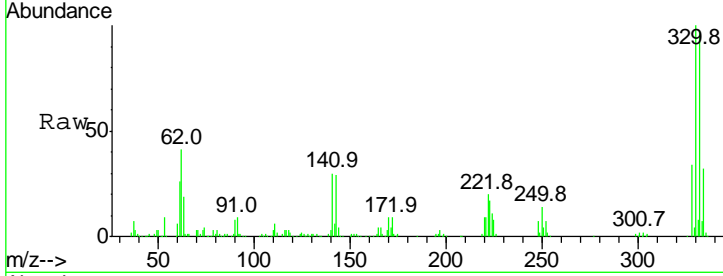




#41  
 2,4,6-Tribromophenol  
 Concen: 113.996 ng  
 RT: 16.26 min Scan# 2207  
 Delta R.T. -0.01 min  
 Lab File: BG030631.D  
 Acq: 1 Nov 2017 12:25

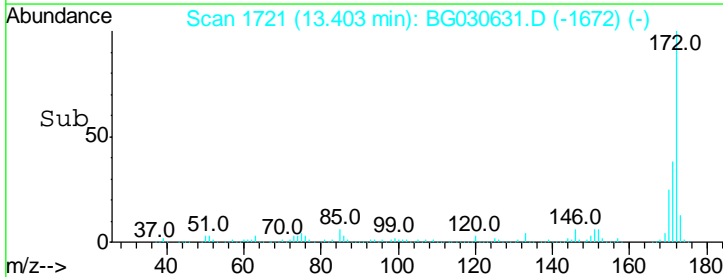
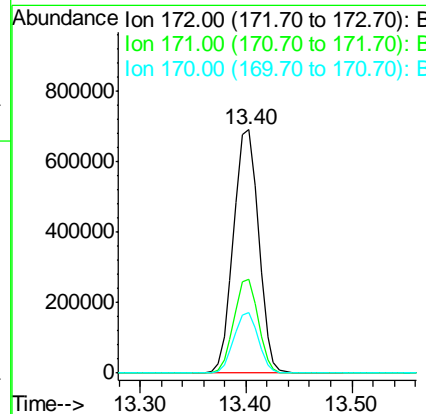
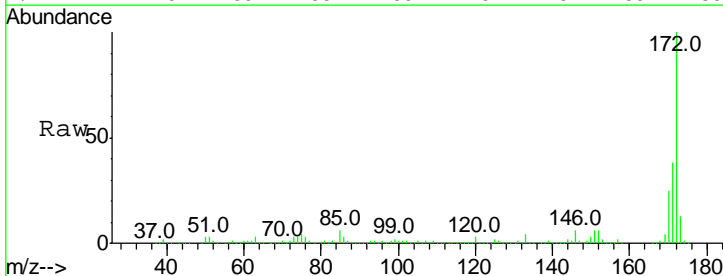
Instrument :  
 BNA\_G  
 ClientSampled :

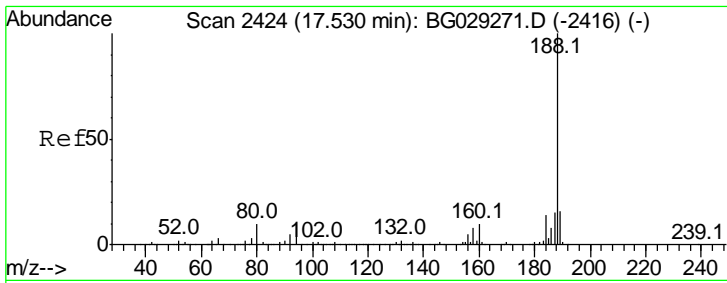
Tgt Ion	Resp	Lower	Upper
330	100		
332	95.8	77.0	115.6
141	31.9	25.2	37.8



#44  
 2-Fluorobiphenyl  
 Concen: 76.032 ng  
 RT: 13.40 min Scan# 1721  
 Delta R.T. -0.01 min  
 Lab File: BG030631.D  
 Acq: 1 Nov 2017 12:25

Tgt Ion	Resp	Lower	Upper
172	100		
171	38.3	30.0	45.0
170	25.0	19.5	29.3

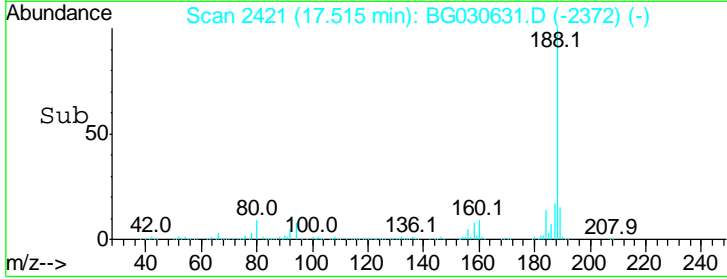
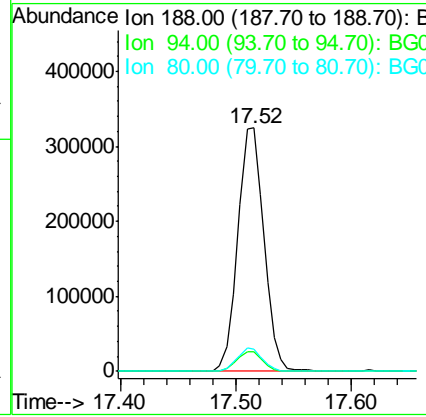
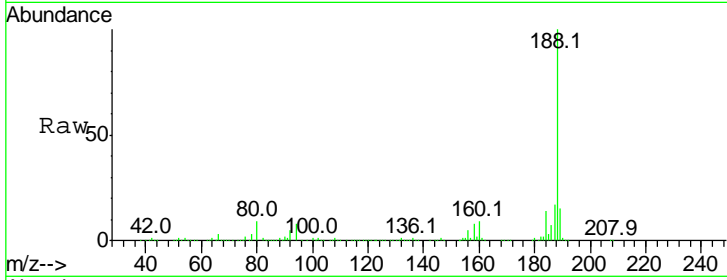




#63  
 Phenanthrene-d10  
 Concen: 20.000 ng  
 RT: 17.52 min Scan# 2421  
 Delta R.T. -0.01 min  
 Lab File: BG030631.D  
 Acq: 1 Nov 2017 12:25

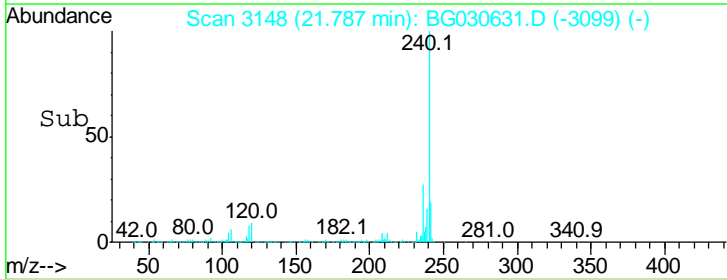
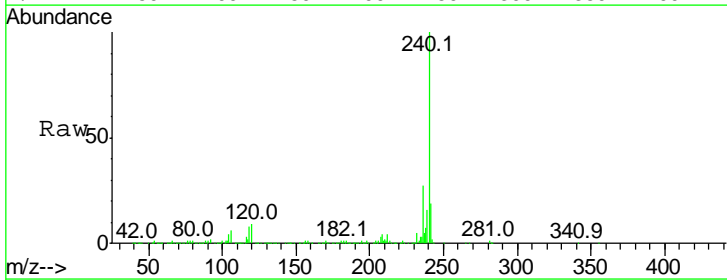
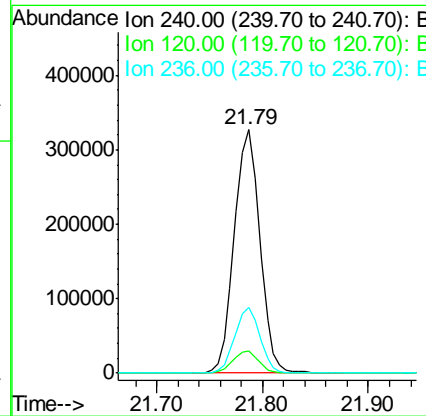
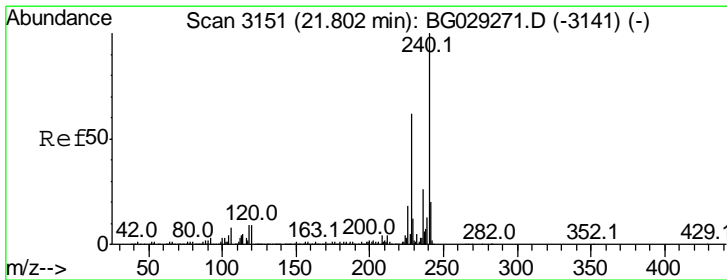
Instrument :  
 BNA\_G  
 ClientSampled :

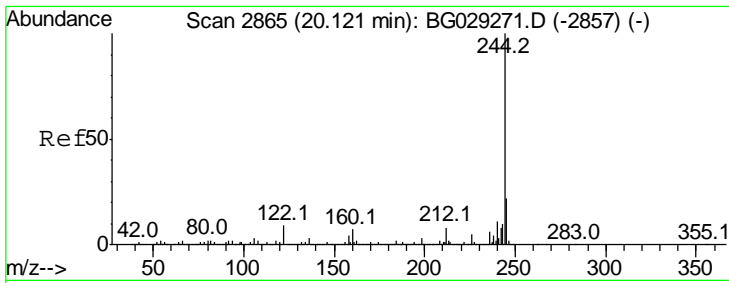
Tgt Ion	Resp	Lower	Upper
188	100		
94	8.3	6.9	10.3
80	9.0	7.7	11.5



#75  
 Chrysene-d12  
 Concen: 20.000 ng  
 RT: 21.79 min Scan# 3148  
 Delta R.T. -0.01 min  
 Lab File: BG030631.D  
 Acq: 1 Nov 2017 12:25

Tgt Ion	Resp	Lower	Upper
240	100		
120	9.0	6.8	10.2
236	27.0	20.9	31.3



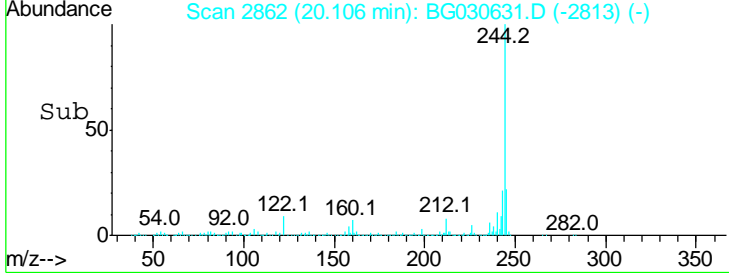
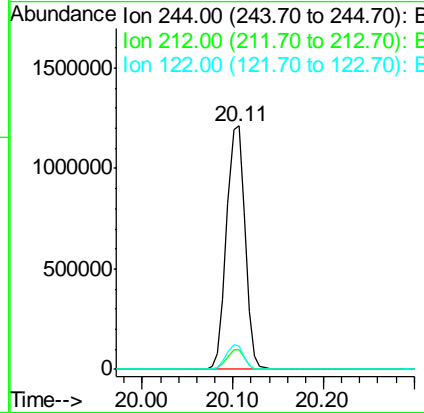
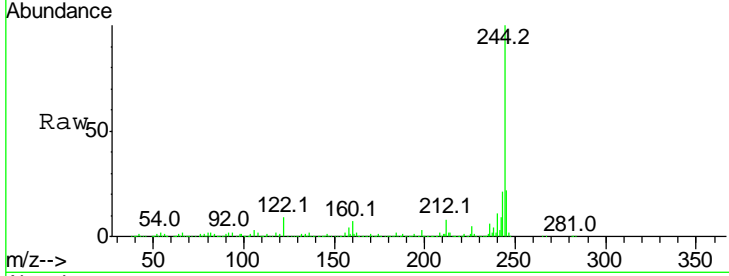


#78  
 Terphenyl-d14  
 Concen: 70.890 ng  
 RT: 20.11 min Scan# 2862  
 Delta R.T. -0.01 min  
 Lab File: BG030631.D  
 Acq: 1 Nov 2017 12:25

Instrument :  
 BNA\_G  
 ClientSampled :

Tgt Ion: 244 Resp: 1709352

Ion	Ratio	Lower	Upper
244	100		
212	8.2	5.8	8.8
122	9.4	7.0	10.4



#86  
 Perylene-d12  
 Concen: 20.000 ng  
 RT: 25.09 min Scan# 3711  
 Delta R.T. -0.02 min  
 Lab File: BG030631.D  
 Acq: 1 Nov 2017 12:25

Tgt Ion: 264 Resp: 548118

Ion	Ratio	Lower	Upper
264	100		
260	24.2	17.4	26.0
265	22.0	17.7	26.5

