

Data Path : Z:\svoasrv\HPCHEM1\BNA_G\Data\BG110124\
 Data File : BG063146.D
 Acq On : 1 Nov 2024 13:37
 Operator : RC/JU
 Sample : PB164382BL
 Misc :
 ALS Vial : 8 Sample Multiplier: 1

Instrument :
 BNA_G
 ClientSampleId :
 PB164382BL

Quant Time: Nov 01 14:31:33 2024
 Quant Method : Z:\svoasrv\HPCHEM1\BNA_G\Methods\8270-BG103124.M
 Quant Title : ASP BNA STANDARDS FOR 5 POINT CALIBRATION
 QLast Update : Fri Nov 01 05:13:40 2024
 Response via : Initial Calibration

Compound	R.T.	QIon	Response	Conc	Units	Dev(Min)
Internal Standards						
1) 1,4-Dichlorobenzene-d4	7.843	152	97652	20.000	ng	0.00
21) Naphthalene-d8	10.634	136	385106	20.000	ng	# 0.00
39) Acenaphthene-d10	14.477	164	302732	20.000	ng	0.00
64) Phenanthrene-d10	17.227	188	757559	20.000	ng	0.00
76) Chrysene-d12	21.480	240	928440	20.000	ng	0.00
86) Perylene-d12	24.512	264	1037693	20.000	ng	0.00
System Monitoring Compounds						
5) 2-Fluorophenol	5.440	112	877724	139.375	ng	0.00
7) Phenol-d6	7.021	99	1166575	141.360	ng	0.00
23) Nitrobenzene-d5	8.995	82	840439	94.917	ng	0.00
42) 2,4,6-Tribromophenol	15.969	330	669309	130.157	ng	0.00
45) 2-Fluorobiphenyl	13.102	172	1886365	92.290	ng	0.00
79) Terphenyl-d14	19.859	244	4216446	93.456	ng	0.00

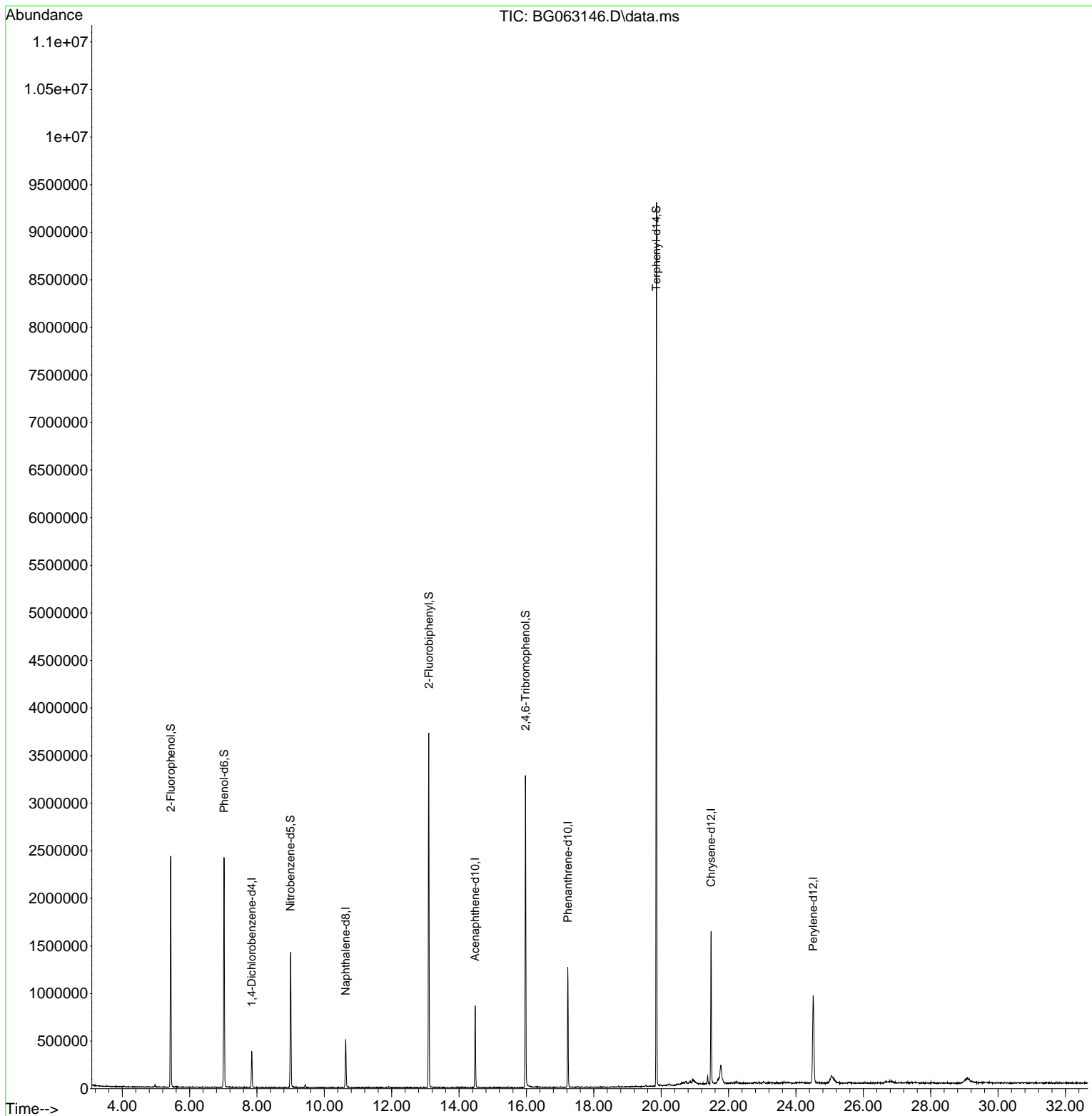
Target Compounds Qvalue

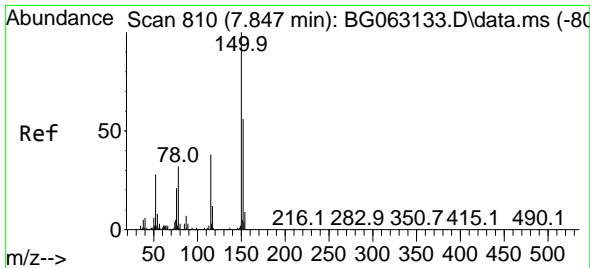
(#) = qualifier out of range (m) = manual integration (+) = signals summed

Data Path : Z:\svoasrv\HPCHEM1\BNA_G\Data\BG110124\
 Data File : BG063146.D
 Acq On : 1 Nov 2024 13:37
 Operator : RC/JU
 Sample : PB164382BL
 Misc :
 ALS Vial : 8 Sample Multiplier: 1

Instrument :
 BNA_G
 ClientSampleId :
 PB164382BL

Quant Time: Nov 01 14:31:33 2024
 Quant Method : Z:\svoasrv\HPCHEM1\BNA_G\Methods\8270-BG103124.M
 Quant Title : ASP BNA STANDARDS FOR 5 POINT CALIBRATION
 QLast Update : Fri Nov 01 05:13:40 2024
 Response via : Initial Calibration

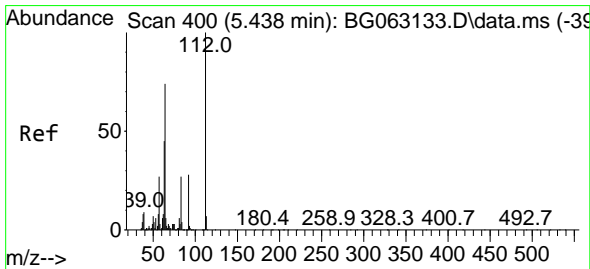
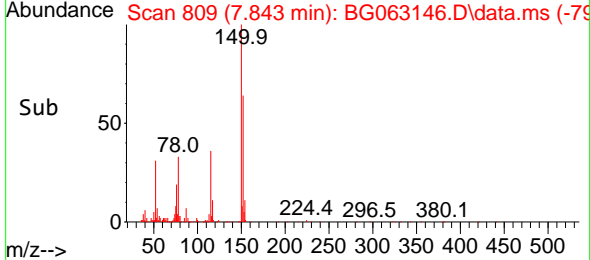
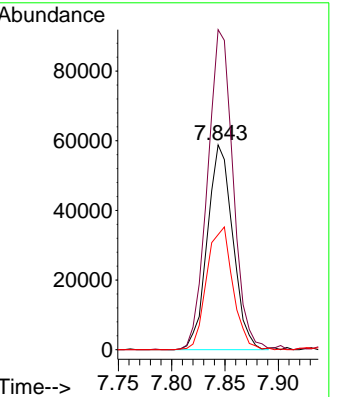
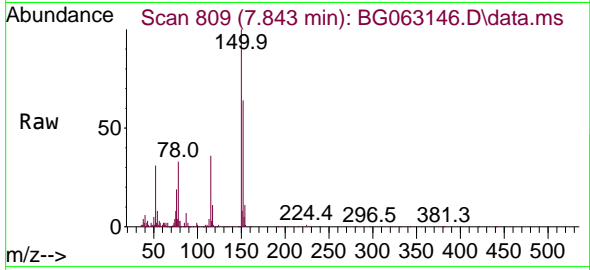




#1
 1,4-Dichlorobenzene-d4
 Concen: 20.000 ng
 RT: 7.843 min Scan# 809
 Delta R.T. -0.004 min
 Lab File: BG063146.D
 Acq: 1 Nov 2024 13:37

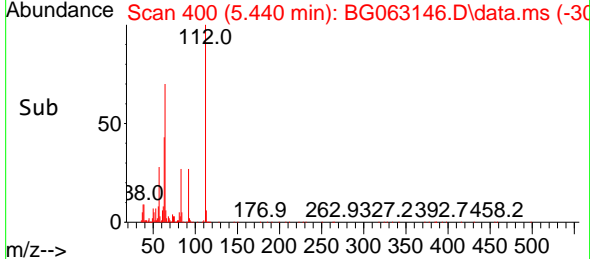
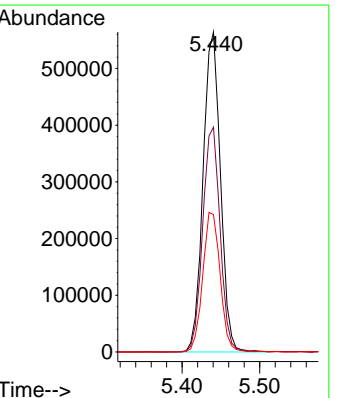
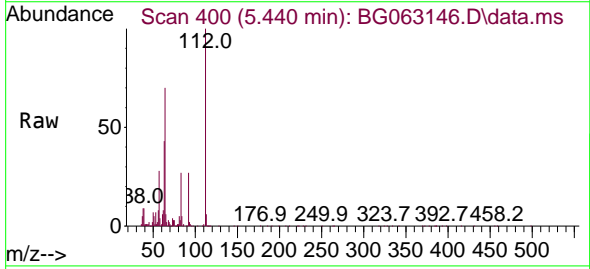
Instrument :
 BNA_G
 ClientSampleId :
 PB164382BL

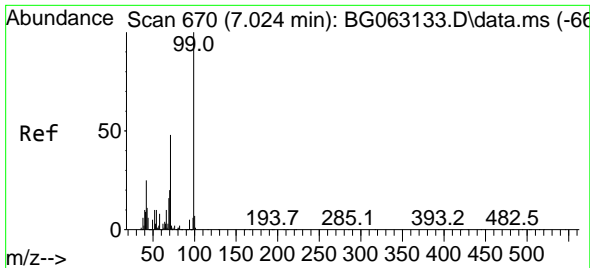
Tgt Ion:152 Resp: 97652
 Ion Ratio Lower Upper
 152 100
 150 156.2 143.1 214.7
 115 56.2 55.0 82.4



#5
 2-Fluorophenol
 Concen: 139.375 ng
 RT: 5.440 min Scan# 400
 Delta R.T. 0.003 min
 Lab File: BG063146.D
 Acq: 1 Nov 2024 13:37

Tgt Ion:112 Resp: 877724
 Ion Ratio Lower Upper
 112 100
 64 70.3 59.4 89.0
 63 43.0 35.8 53.6

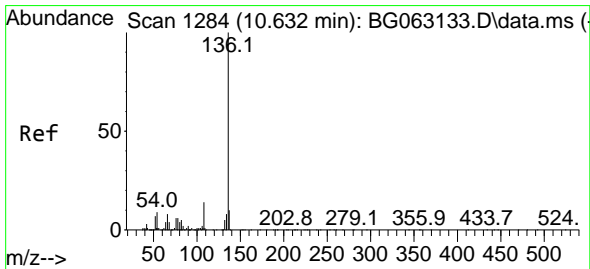
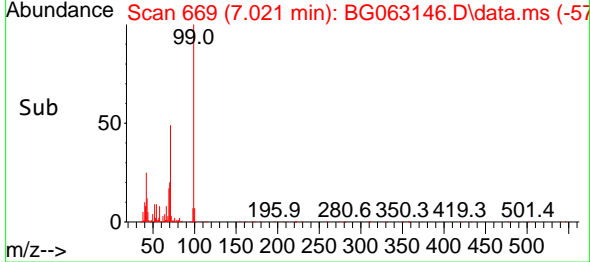
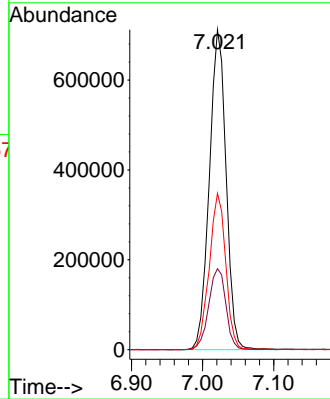
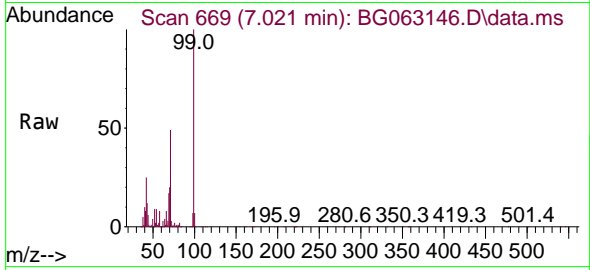




#7
 Phenol-d6
 Concen: 141.360 ng
 RT: 7.021 min Scan# 60
 Delta R.T. -0.003 min
 Lab File: BG063146.D
 Acq: 1 Nov 2024 13:37

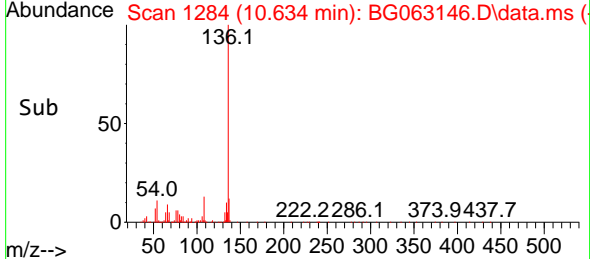
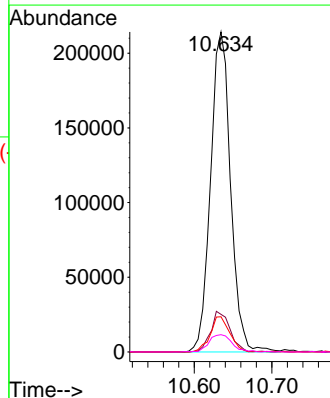
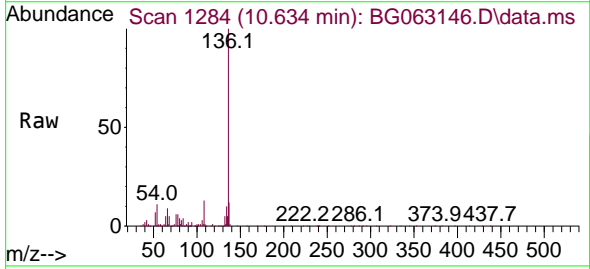
Instrument :
 BNA_G
 ClientSampleId :
 PB164382BL

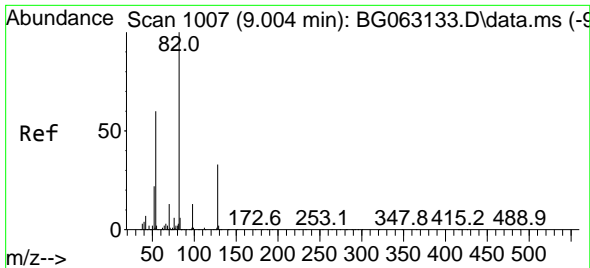
Tgt Ion: 99 Resp: 1166575
 Ion Ratio Lower Upper
 99 100
 42 25.3 20.0 30.0
 71 48.9 38.2 57.4



#21
 Naphthalene-d8
 Concen: 20.000 ng
 RT: 10.634 min Scan# 1284
 Delta R.T. 0.003 min
 Lab File: BG063146.D
 Acq: 1 Nov 2024 13:37

Tgt Ion:136 Resp: 385106
 Ion Ratio Lower Upper
 136 100
 137 11.7 7.8 11.6#
 54 11.0 7.3 10.9#
 68 5.4 3.5 5.3#



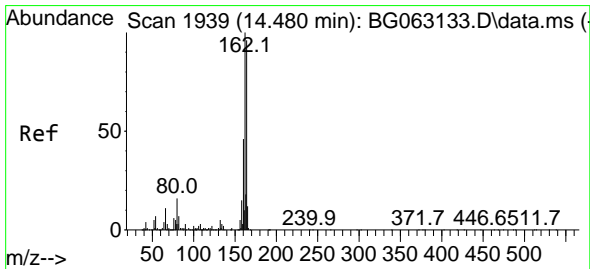
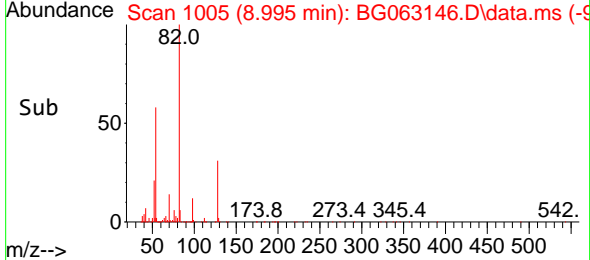
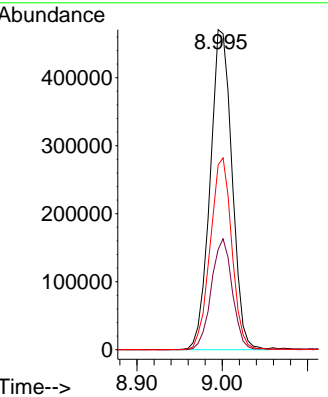
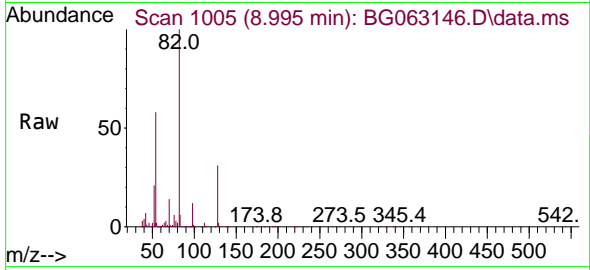


#23
 Nitrobenzene-d5
 Concen: 94.917 ng
 RT: 8.995 min Scan# 1005
 Delta R.T. -0.009 min
 Lab File: BG063146.D
 Acq: 1 Nov 2024 13:37

Instrument : BNA_G
 ClientSampleId : PB164382BL

Tgt Ion: 82 Resp: 840439

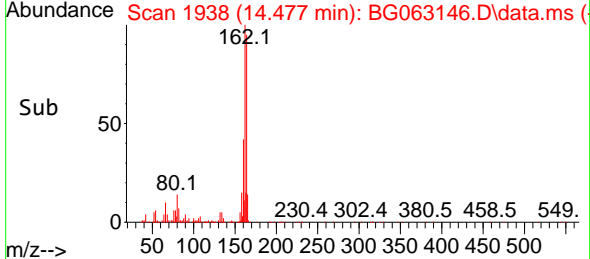
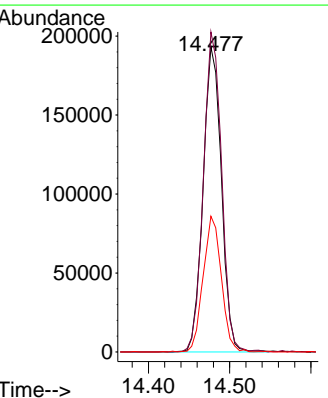
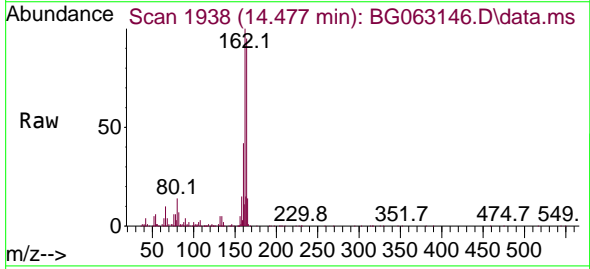
Ion	Ratio	Lower	Upper
82	100		
128	31.3	26.6	39.8
54	57.7	47.8	71.8

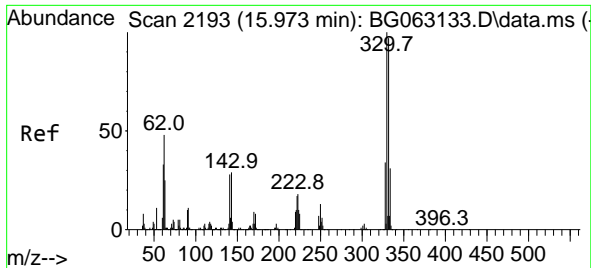


#39
 Acenaphthene-d10
 Concen: 20.000 ng
 RT: 14.477 min Scan# 1938
 Delta R.T. -0.003 min
 Lab File: BG063146.D
 Acq: 1 Nov 2024 13:37

Tgt Ion: 164 Resp: 302732

Ion	Ratio	Lower	Upper
164	100		
162	104.9	83.4	125.0
160	44.5	38.0	57.0

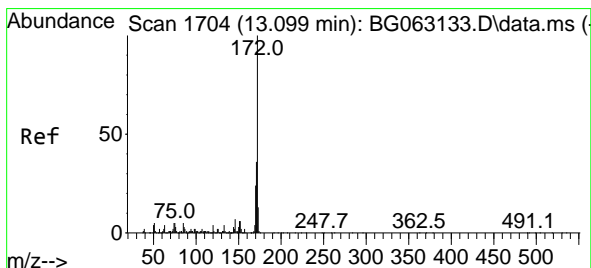
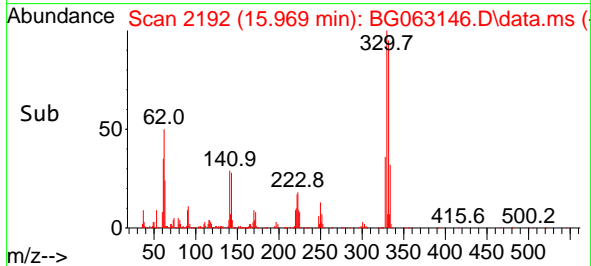
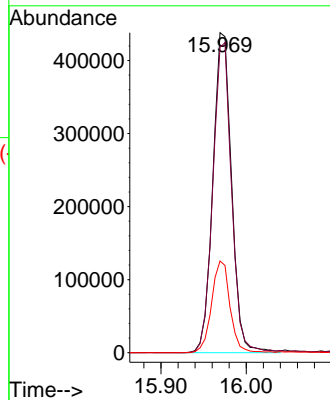
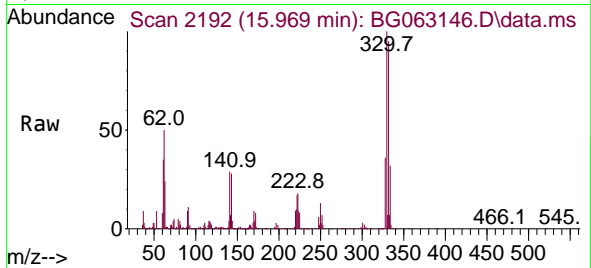




#42
 2,4,6-Tribromophenol
 Concen: 130.157 ng
 RT: 15.969 min Scan# 21
 Delta R.T. -0.003 min
 Lab File: BG063146.D
 Acq: 1 Nov 2024 13:37

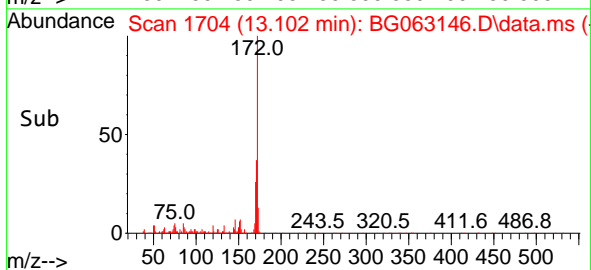
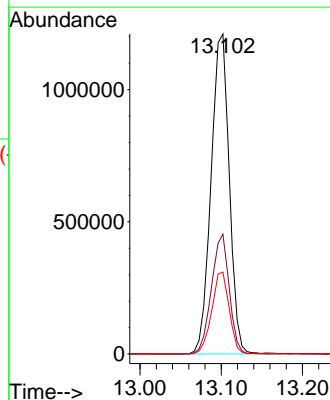
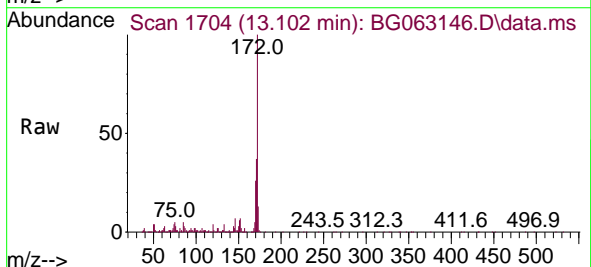
Instrument :
 BNA_G
 ClientSampleId :
 PB164382BL

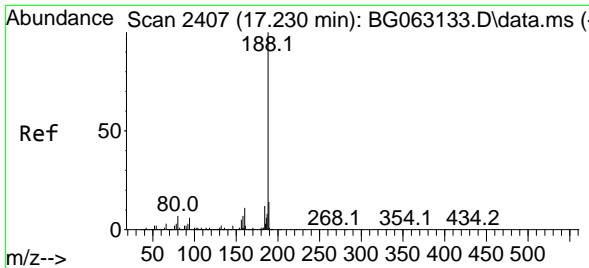
Tgt Ion:330 Resp: 669309
 Ion Ratio Lower Upper
 330 100
 332 97.6 78.6 117.8
 141 28.3 22.6 34.0



#45
 2-Fluorobiphenyl
 Concen: 92.290 ng
 RT: 13.102 min Scan# 1704
 Delta R.T. 0.003 min
 Lab File: BG063146.D
 Acq: 1 Nov 2024 13:37

Tgt Ion:172 Resp: 1886365
 Ion Ratio Lower Upper
 172 100
 171 37.4 28.6 42.8
 170 25.6 19.4 29.2

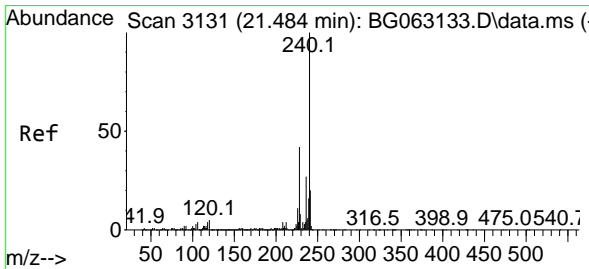
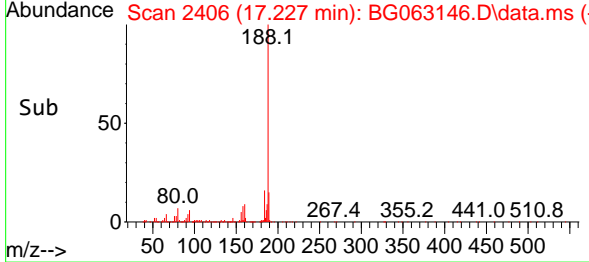
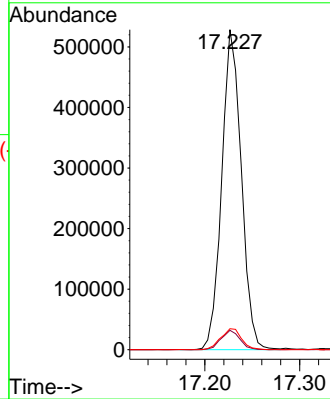
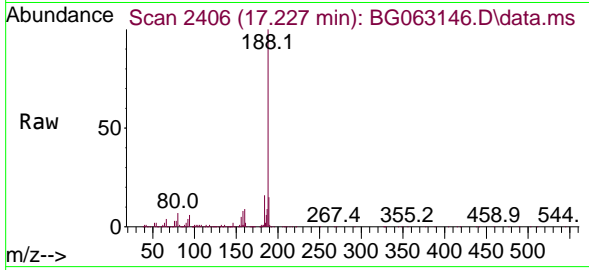




#64
 Phenanthrene-d10
 Concen: 20.000 ng
 RT: 17.227 min Scan# 24
 Delta R.T. -0.003 min
 Lab File: BG063146.D
 Acq: 1 Nov 2024 13:37

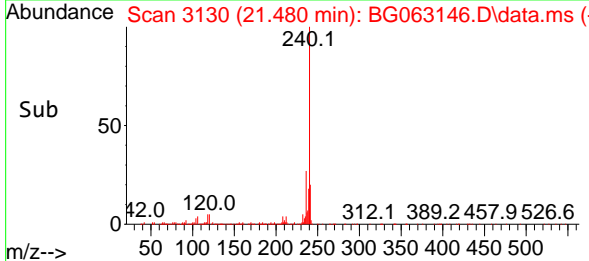
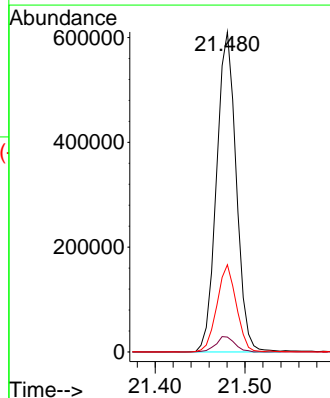
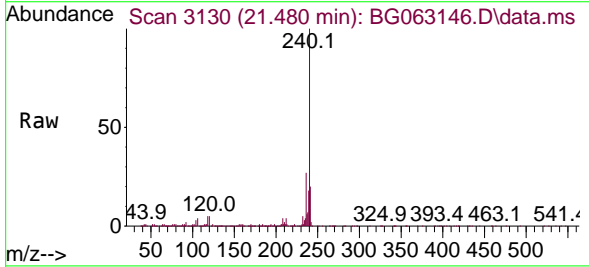
Instrument :
 BNA_G
 ClientSampleId :
 PB164382BL

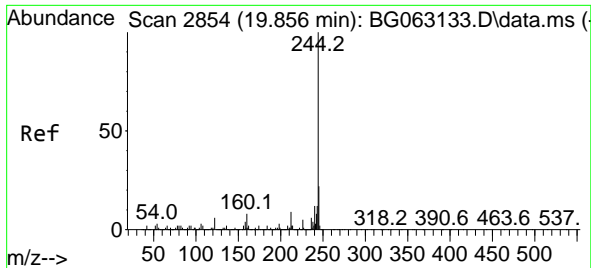
Tgt Ion	Resp	Lower	Upper
188	100		
94	6.0	4.8	7.2
80	6.5	5.9	8.9



#76
 Chrysene-d12
 Concen: 20.000 ng
 RT: 21.480 min Scan# 3130
 Delta R.T. -0.003 min
 Lab File: BG063146.D
 Acq: 1 Nov 2024 13:37

Tgt Ion	Resp	Lower	Upper
240	100		
120	4.6	3.9	5.9
236	27.3	21.4	32.2



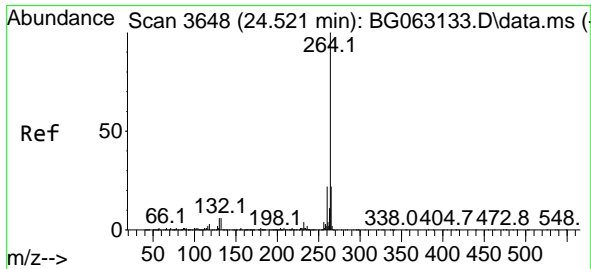
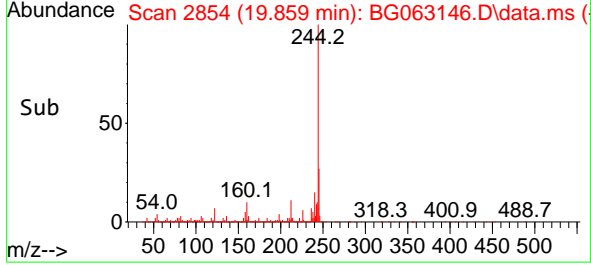
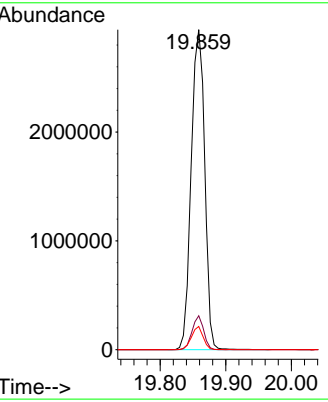
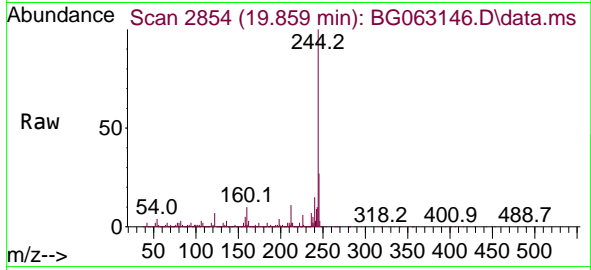


#79
 Terphenyl-d14
 Concen: 93.456 ng
 RT: 19.859 min Scan# 21
 Delta R.T. 0.003 min
 Lab File: BG063146.D
 Acq: 1 Nov 2024 13:37

Instrument :
 BNA_G
 ClientSampleId :
 PB164382BL

Tgt Ion:244 Resp: 4216446

Ion	Ratio	Lower	Upper
244	100		
212	10.6	7.3	10.9
122	7.3	4.8	7.2#



#86
 Perylene-d12
 Concen: 20.000 ng
 RT: 24.512 min Scan# 3646
 Delta R.T. -0.009 min
 Lab File: BG063146.D
 Acq: 1 Nov 2024 13:37

Tgt Ion:264 Resp: 1037693

Ion	Ratio	Lower	Upper
264	100		
260	24.4	17.4	26.2
265	19.7	17.4	26.0

