

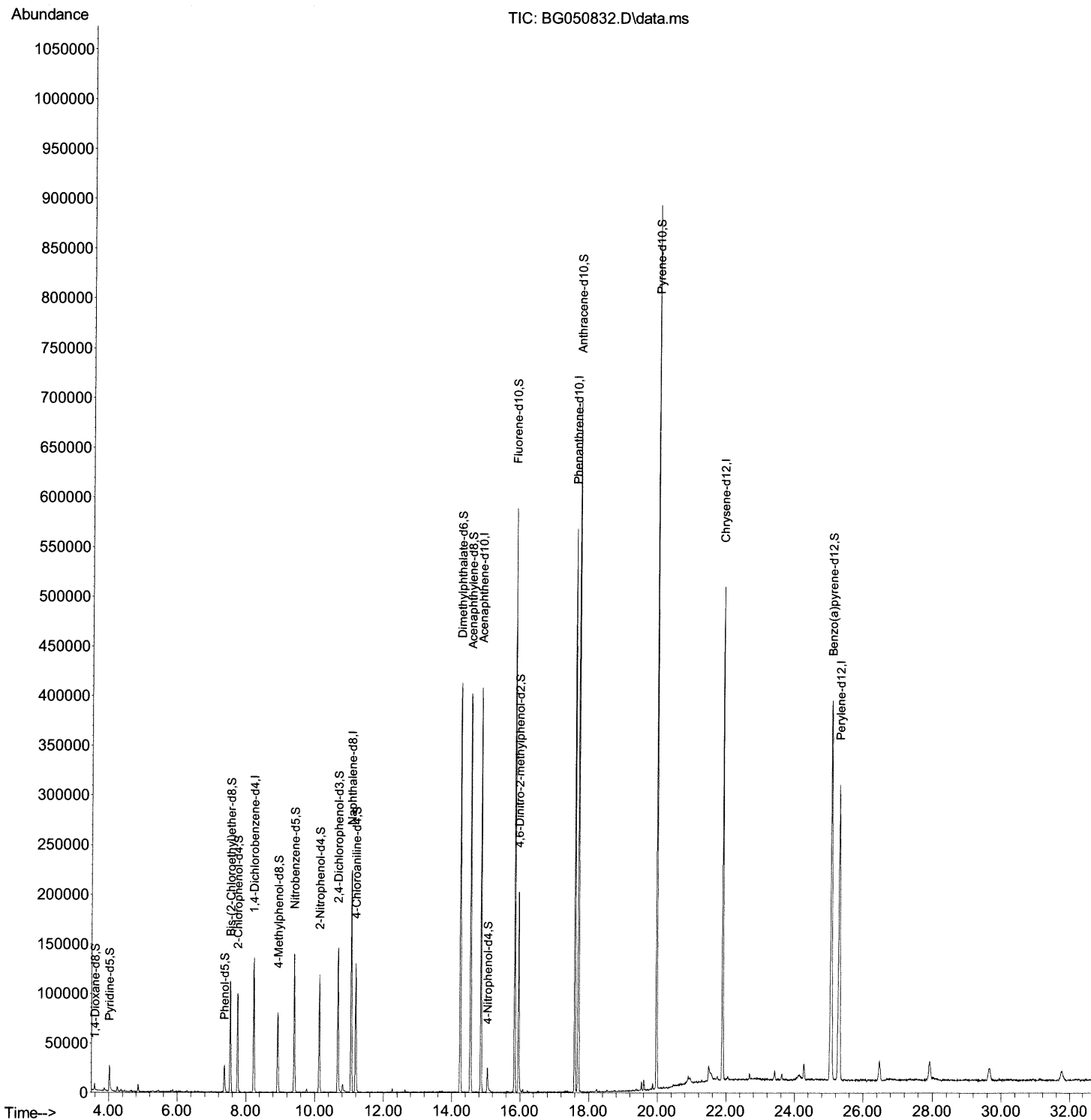
Data Path : Z:\svoasrv\HPCHEM1\BNA_G\Data\BG110321\
Data File : BG050832.D
Acq On : 3 Nov 2021 1:55
Operator : CG/JU
Sample : M4364-02
Misc :
ALS Vial : 17 Sample Multiplier: 1

Instrument :
BNA_G
ClientSampleId :
BG324

Manual IntegrationsAPPROVED

Quant Time: Nov 03 02:35:44 2021
Quant Method : Z:\svoasrv\HPCHEM1\BNA_G\Methods\SFAM-EPA-BG110321.M
Quant Title : SVOA CALIBRATION
QLast Update : Tue Nov 02 14:49:05 2021
Response via : Initial Calibration

Reviewed By :Jagrut Upadhyay 11/03/2021
Supervised By :mohammad ahmed 11/08/2021



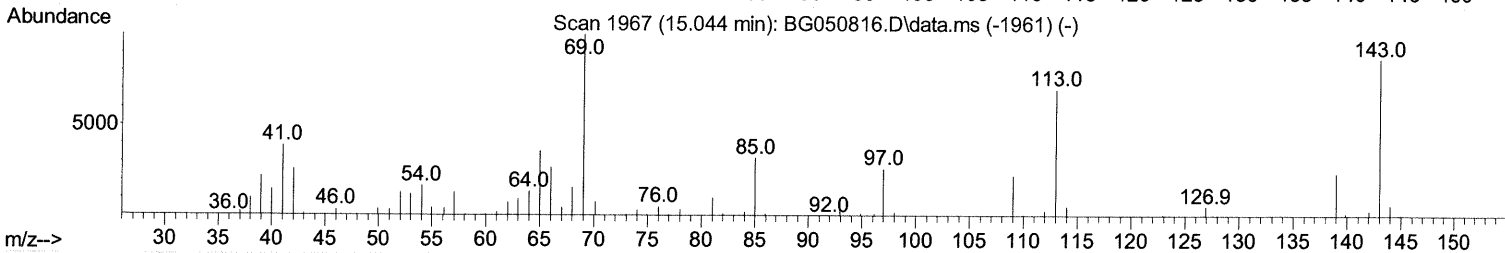
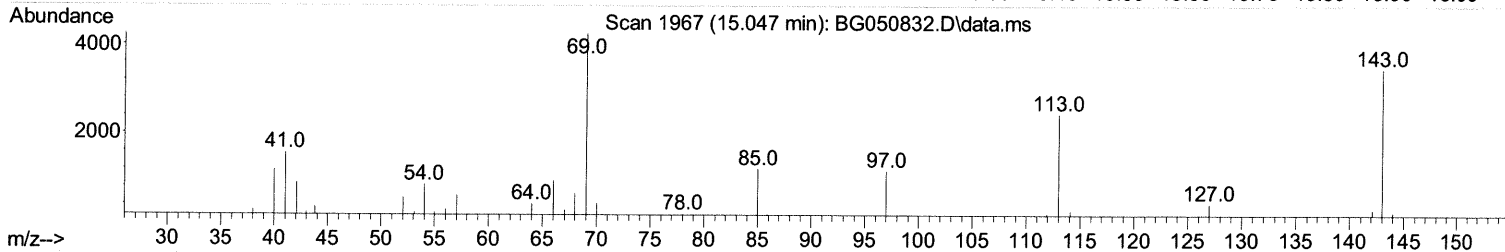
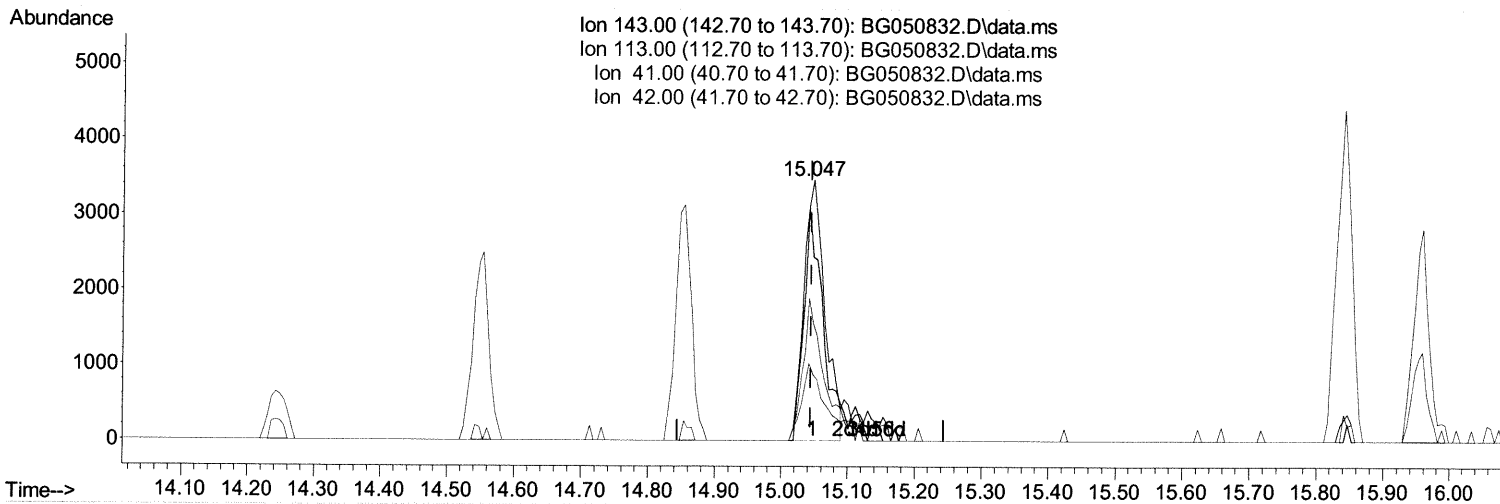
Data Path : Z:\svoasrv\HPCHEM1\BNA_G\Data\BG110321\
Data File : BG050832.D
Acq On : 3 Nov 2021 1:55
Operator : CG/JU
Sample : M4364-02
Misc :
ALS Vial : 17 Sample Multiplier: 1

Instrument :
BNA_G
ClientSampleId :
BG324

Manual IntegrationsAPPROVED

Quant Time: Nov 03 02:35:44 2021
Quant Method : Z:\svoasrv\HPCHEM1\BNA_G\Methods\SFAM-EPA-BG110321.M
Quant Title : SVOA CALIBRATION
QLast Update : Tue Nov 02 14:49:05 2021
Response via : Initial Calibration

Reviewed By :Jagrut Upadhyay 11/03/2021
Supervised By :mohammad ahmed 11/08/2021



TIC: BG050832.D\data.ms

(54) 4-Nitrophenol-d4 (S)

15.047min (+ 0.003) 3.89 ng/ul

response 7614

Ion	Exp%	Act%
143.00	100.00	100.00
113.00	80.30	70.45
41.00	44.40	44.92
42.00	29.70	25.22

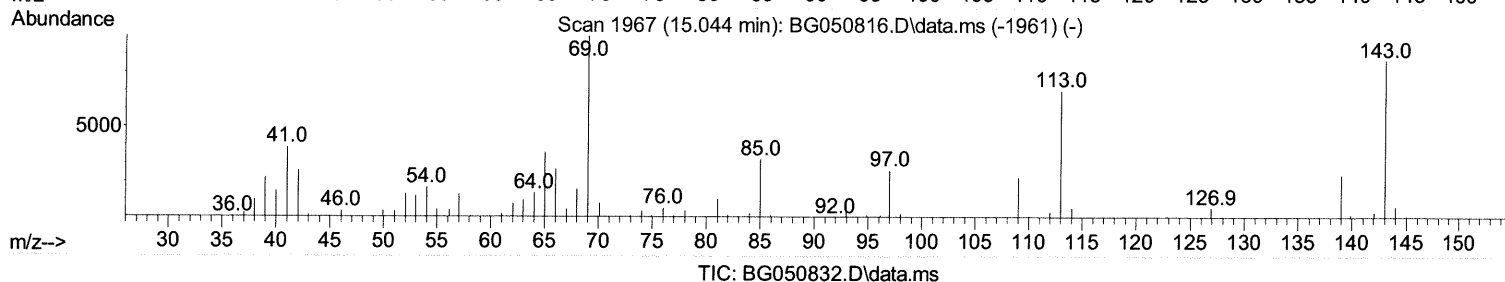
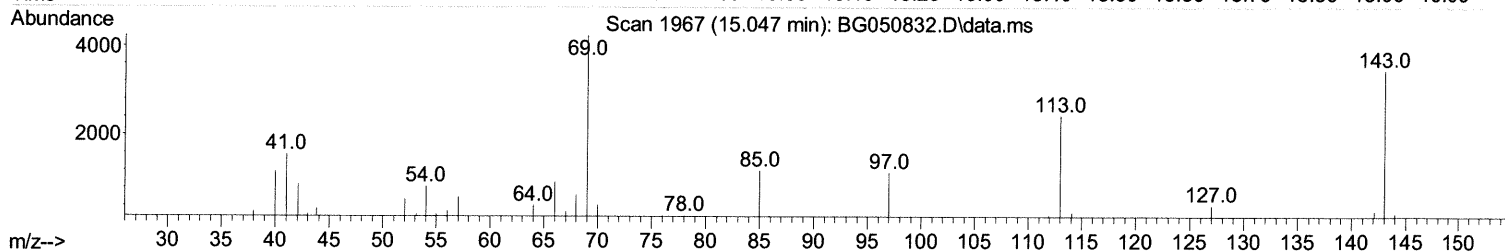
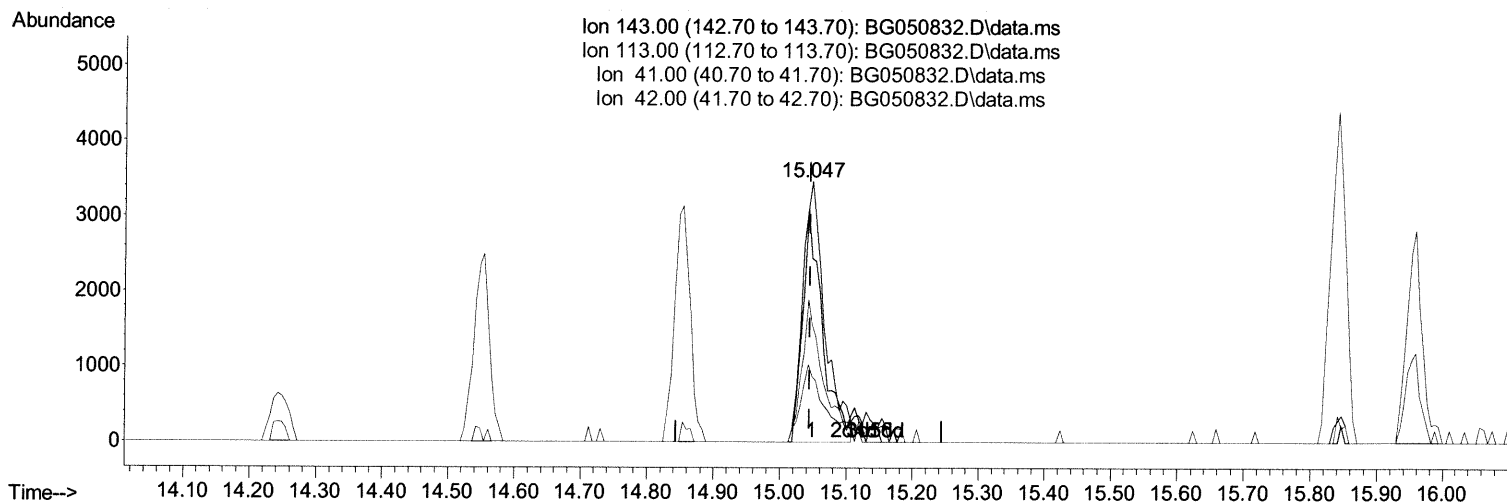
Data Path : Z:\svoasrv\HPCHEM1\BNA_G\Data\BG110321\
Data File : BG050832.D
Acq On : 3 Nov 2021 1:55
Operator : CG/JU
Sample : M4364-02
Misc :
ALS Vial : 17 Sample Multiplier: 1

Instrument :
BNA_G
ClientSampleId :
BG324

Manual IntegrationsAPPROVED

Quant Time: Nov 03 02:35:44 2021
Quant Method : Z:\svoasrv\HPCHEM1\BNA_G\Methods\SFAM-EPA-BG110321.M
Quant Title : SVOA CALIBRATION
QLast Update : Tue Nov 02 14:49:05 2021
Response via : Initial Calibration

Reviewed By :Jagrut Upadhyay 11/03/2021
Supervised By :mohammad ahmed 11/08/2021



(54) 4-Nitrophenol-d4 (S)

15.047min (+ 0.003) 4.12 ng/ul m

11/04/2021

response 8068

Ion	Exp%	Act%
143.00	100.00	100.00
113.00	80.30	70.45
41.00	44.40	44.92
42.00	29.70	25.22

Data Path : Z:\svoasrv\HPCHEM1\BNA_G\Data\BG110321\
 Data File : BG050832.D
 Acq On : 3 Nov 2021 1:55
 Operator : CG/JU
 Sample : M4364-02
 Misc :
 ALS Vial : 17 Sample Multiplier: 1

Instrument :
 BNA_G
 ClientSampleId :
 BG324

Manual IntegrationsAPPROVED

Reviewed By :Jagrut Upadhyay 11/03/2021
 Supervised By :mohammad ahmed 11/08/2021

Quant Time: Nov 03 02:35:44 2021
 Quant Method : Z:\svoasrv\HPCHEM1\BNA_G\Methods\SFAM-EPA-BG110321.M
 Quant Title : SVOA CALIBRATION
 QLast Update : Tue Nov 02 14:49:05 2021
 Response via : Initial Calibration

Compound	R.T.	QIon	Response	Conc	Units	Dev(Min)

Internal Standards						
1) 1,4-Dichlorobenzene-d4	8.232	152	37317	20.000	ng/ul	0.00
20) Naphthalene-d8	11.058	136	188705	20.000	ng/ul	0.00
38) Acenaphthene-d10	14.854	164	141220	20.000	ng/ul	0.00
64) Phenanthrene-d10	17.597	188	338549	20.000	ng/ul	0.00
79) Chrysene-d12	21.892	240	298092	20.000	ng/ul	-0.01
88) Perylene-d12	25.294	264	292689	20.000	ng/ul	-0.01
System Monitoring Compounds						
3) 1,4-Dioxane-d8	3.590	96	3780	3.269	ng/uL	0.00
4) Pyridine-d5	4.019	84	17704	5.118	ng/ul	0.00
7) Phenol-d5	7.374	99	17362	4.361	ng/ul	0.00
9) Bis-(2-Chloroethyl)eth...	7.544	67	57123	22.213	ng/ul	0.00
11) 2-Chlorophenol-d4	7.756	132	47396	17.179	ng/ul	0.00
15) 4-Methylphenol-d8	8.931	113	33700	10.753	ng/ul	0.00
21) Nitrobenzene-d5	9.401	128	34322	21.403	ng/ul	0.00
24) 2-Nitrophenol-d4	10.130	143	36844	20.663	ng/ul	0.00
28) 2,4-Dichlorophenol-d3	10.670	165	54413	18.116	ng/ul	0.00
31) 4-Chloroaniline-d4	11.187	131	70619	15.525	ng/ul	0.00
46) Dimethylphthalate-d6	14.248	166	268627	24.863	ng/ul	0.00
49) Acenaphthylene-d8	14.548	160	294316	21.865	ng/ul	0.00
54) 4-Nitrophenol-d4	15.047	143	8068m>	4.118	ng/ul>	0.00
60) Fluorene-d10	15.841	176	231623	24.200	ng/ul	0.00
65) 4,6-Dinitro-2-methylph...	15.958	200	44281	21.574	ng/ul	0.00
73) Anthracene-d10	17.697	188	406871	25.420	ng/ul	0.00
81) Pyrene-d10	19.971	212	484183	25.148	ng/ul	0.00
92) Benzo(a)pyrene-d12	25.059	264	393326	24.309	ng/ul	-0.01

Target Compounds Qvalue

(#) = qualifier out of range (m) = manual integration (+) = signals summed