

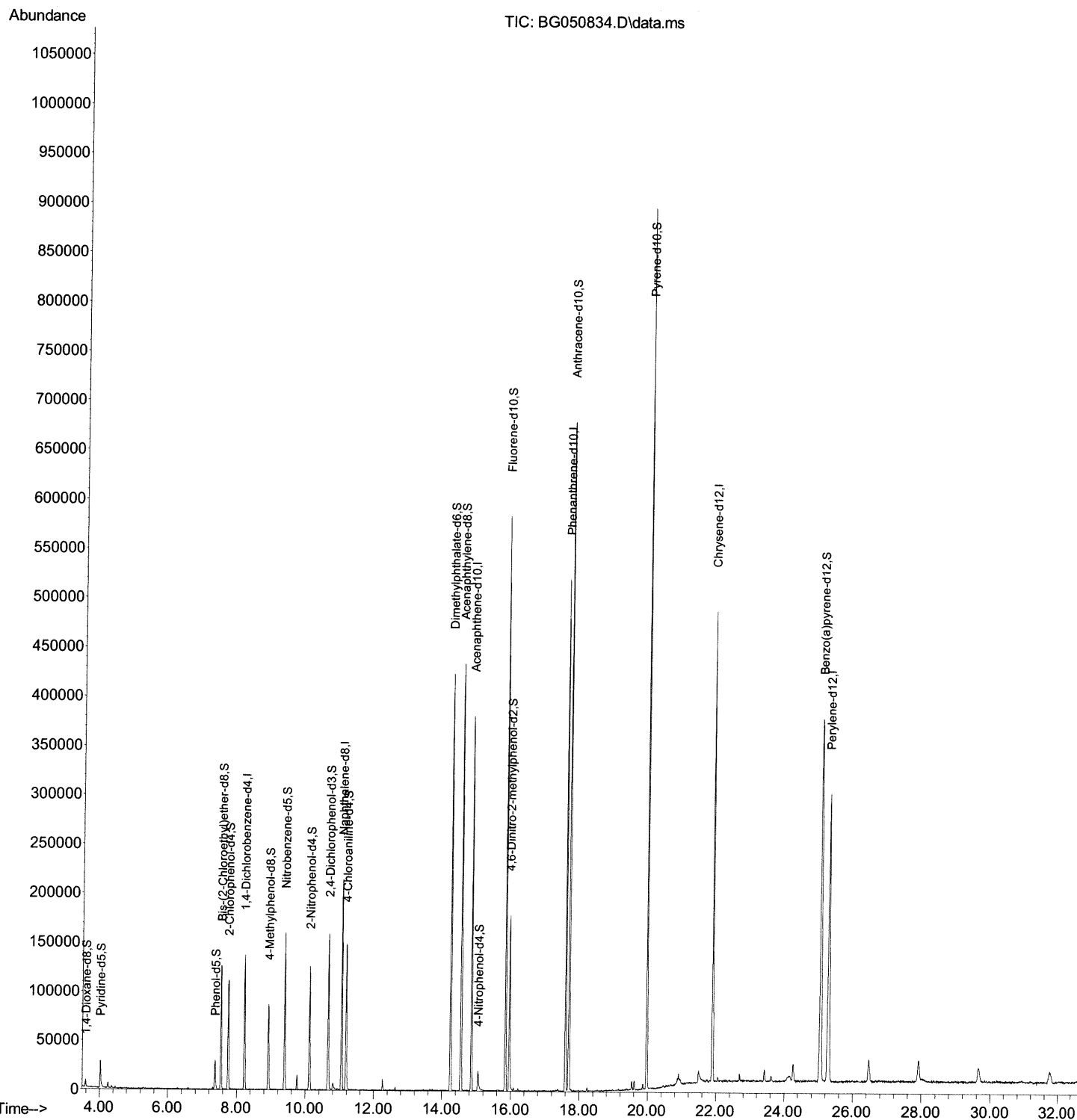
Data Path : Z:\svoasrv\HPCHEM1\BNA_G\Data\BG110321\
Data File : BG050834.D
Acq On : 3 Nov 2021 3:17
Operator : CG/JU
Sample : M4364-03
Misc :
ALS Vial : 19 Sample Multiplier: 1

Instrument :
BNA_G
ClientSampleId :
BG328

Manual IntegrationsAPPROVED

Quant Time: Nov 03 04:05:00 2021
Quant Method : Z:\svoasrv\HPCHEM1\BNA_G\Methods\SFAM-EPA-BG110321.M
Quant Title : SVOA CALIBRATION
QLast Update : Tue Nov 02 14:49:05 2021
Response via : Initial Calibration

Reviewed By :Jagrut Upadhyay 11/03/2021
Supervised By :mohammad ahmed 11/08/2021



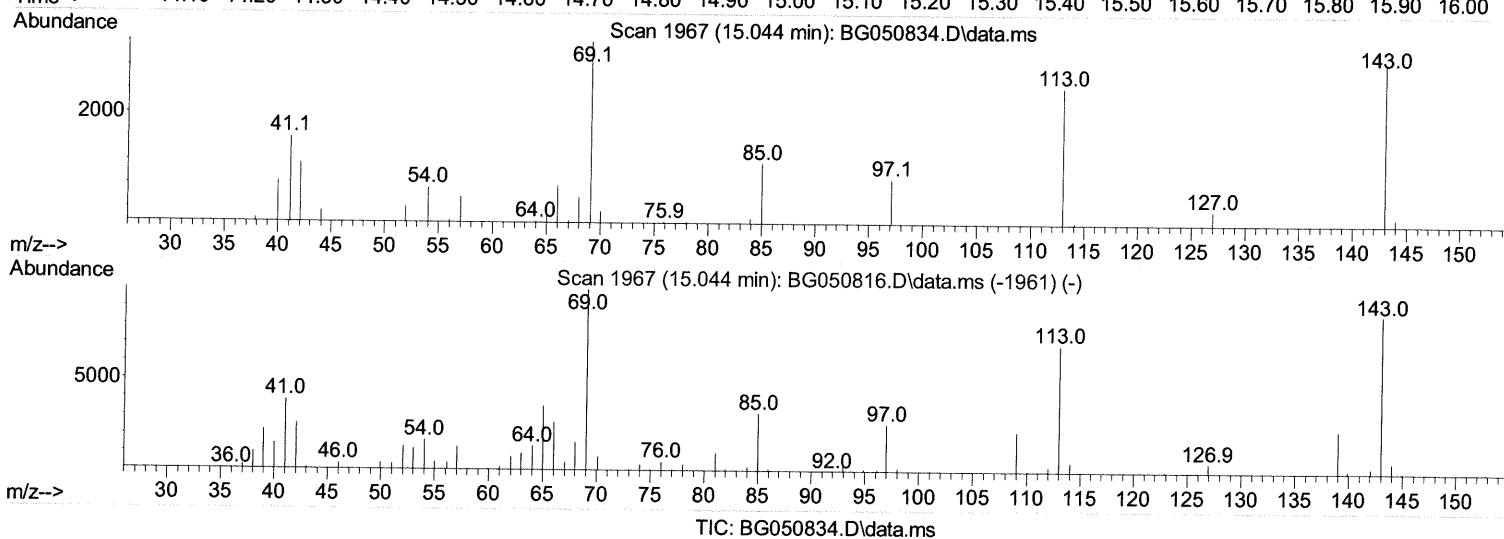
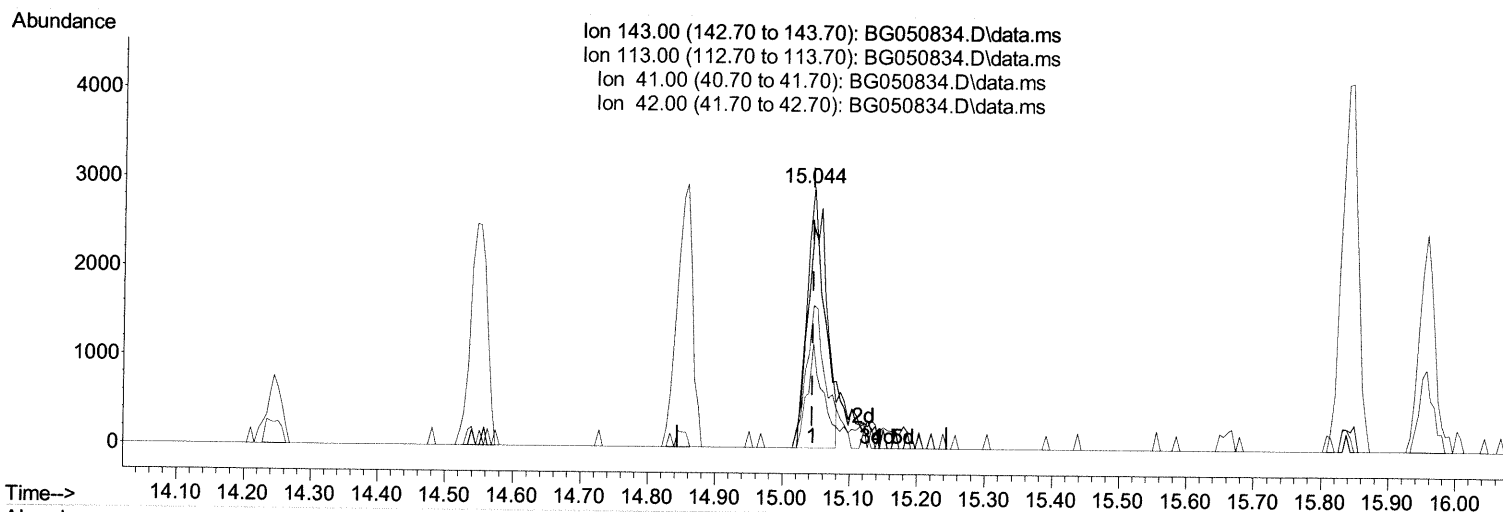
Data Path : Z:\svoasrv\HPCHEM1\BNA_G\Data\BG110321\
Data File : BG050834.D
Acq On : 3 Nov 2021 3:17
Operator : CG/JU
Sample : M4364-03
Misc :
ALS Vial : 19 Sample Multiplier: 1

Instrument :
BNA_G
ClientSampleId :
BG328

Manual IntegrationsAPPROVED

Quant Time: Nov 03 04:05:00 2021
Quant Method : Z:\svoasrv\HPCHEM1\BNA_G\Methods\SFAM-EPA-BG110321.M
Quant Title : SVOA CALIBRATION
QLast Update : Tue Nov 02 14:49:05 2021
Response via : Initial Calibration

Reviewed By :Jagrut Upadhyay 11/03/2021
Supervised By :mohammad ahmed 11/08/2021



(54) 4-Nitrophenol-d4 (S)

15.044min (+ 0.000) 3.12 ng/u1

response 5829

Ion	Exp%	Act%
143.00	100.00	100.00
113.00	80.30	84.62
41.00	44.40	54.61#
42.00	29.70	39.99#

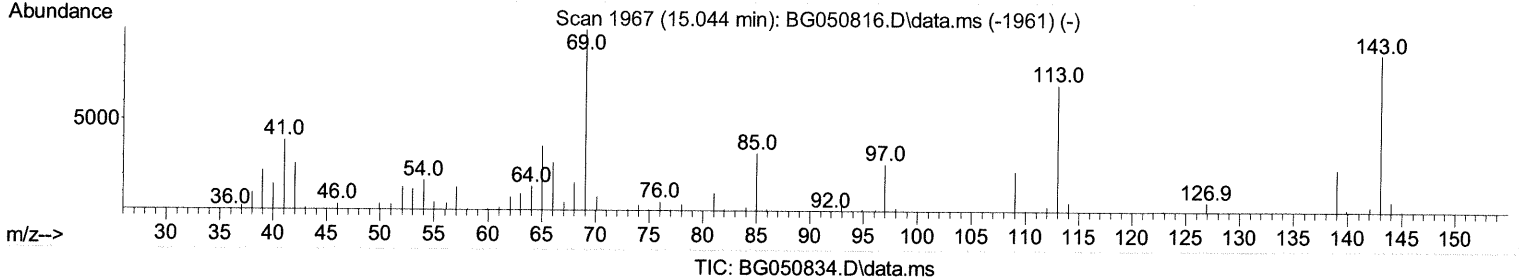
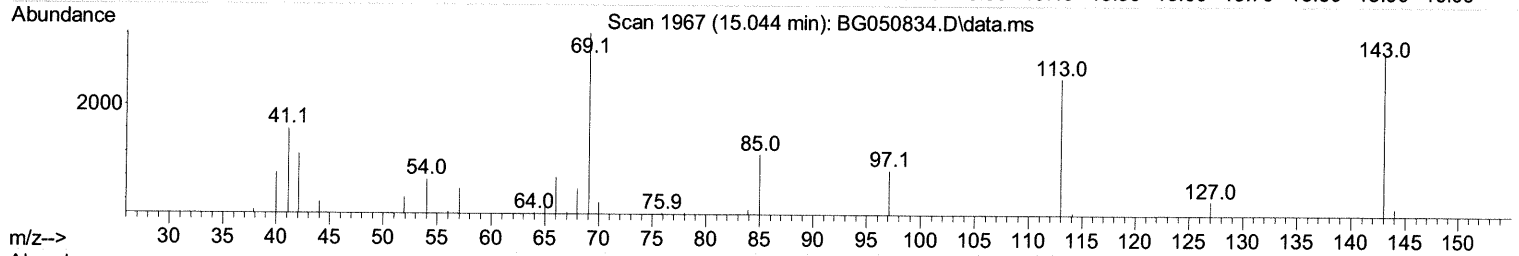
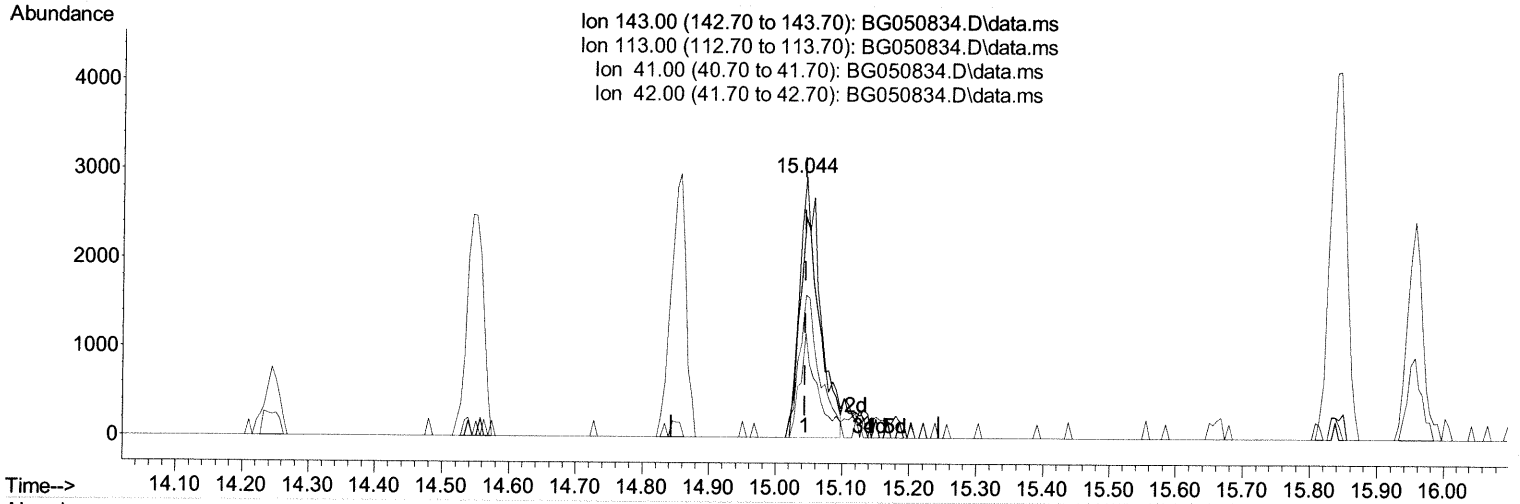
Data Path : Z:\svoasrv\HPCHEM1\BNA_G\Data\BG110321\
Data File : BG050834.D
Acq On : 3 Nov 2021 3:17
Operator : CG/JU
Sample : M4364-03
Misc :
ALS Vial : 19 Sample Multiplier: 1

Instrument :
BNA_G
ClientSampleId :
BG328

Manual IntegrationsAPPROVED

Quant Time: Nov 03 04:05:00 2021
Quant Method : Z:\svoasrv\HPCHEM1\BNA_G\Methods\SFAM-EPA-BG110321.M
Quant Title : SVOA CALIBRATION
QLast Update : Tue Nov 02 14:49:05 2021
Response via : Initial Calibration

Reviewed By :Jagrut Upadhyay 11/03/2021
Supervised By :mohammad ahmed 11/08/2021



(54) 4-Nitrophenol-d4 (S)

15.044min (+ 0.000) 3.40 ng/ul m 11/04/21JU

response 6351

Ion	Exp%	Act%
143.00	100.00	100.00
113.00	80.30	84.62
41.00	44.40	54.61#
42.00	29.70	39.99#

Data Path : Z:\svoasrv\HPCHEM1\BNA_G\Data\BG110321\
 Data File : BG050834.D
 Acq On : 3 Nov 2021 3:17
 Operator : CG/JU
 Sample : M4364-03
 Misc :
 ALS Vial : 19 Sample Multiplier: 1

Instrument :
 BNA_G
 ClientSampleId :
 BG328

Manual IntegrationsAPPROVED

Quant Time: Nov 03 04:05:00 2021
 Quant Method : Z:\svoasrv\HPCHEM1\BNA_G\Methods\SFAM-EPA-BG110321.M
 Quant Title : SVOA CALIBRATION
 QLast Update : Tue Nov 02 14:49:05 2021
 Response via : Initial Calibration

Reviewed By :Jagrut Upadhyay 11/03/2021
 Supervised By :mohammad ahmed 11/08/2021

Compound	R.T.	QIon	Response	Conc	Units	Dev(Min)

Internal Standards						
1) 1,4-Dichlorobenzene-d4	8.229	152	36096	20.000	ng/ul	0.00
20) Naphthalene-d8	11.055	136	180610	20.000	ng/ul	0.00
38) Acenaphthene-d10	14.856	164	134639	20.000	ng/ul	0.00
64) Phenanthrene-d10	17.600	188	320632	20.000	ng/ul	0.00
79) Chrysene-d12	21.895	240	285105	20.000	ng/ul	-0.01
88) Perylene-d12	25.297	264	281837	20.000	ng/ul	-0.01
System Monitoring Compounds						
3) 1,4-Dioxane-d8	3.587	96	4104	3.670	ng/uL	0.00
4) Pyridine-d5	4.016	84	17891	5.347	ng/ul	0.00
7) Phenol-d5	7.371	99	18264	4.743	ng/ul	0.00
9) Bis-(2-Chloroethyl)eth...	7.541	67	66250	26.633	ng/ul	0.00
11) 2-Chlorophenol-d4	7.759	132	52063	19.509	ng/ul	0.00
15) 4-Methylphenol-d8	8.928	113	35060	11.565	ng/ul	0.00
21) Nitrobenzene-d5	9.404	128	39086	25.466	ng/ul	0.00
24) 2-Nitrophenol-d4	10.132	143	39978	23.425	ng/ul	0.00
28) 2,4-Dichlorophenol-d3	10.673	165	58090	20.207	ng/ul	0.00
31) 4-Chloroaniline-d4	11.190	131	83082	19.084	ng/ul	0.00
46) Dimethylphthalate-d6	14.245	166	266008	25.824	ng/ul	0.00
49) Acenaphthylene-d8	14.551	160	312411	24.343	ng/ul	0.00
54) 4-Nitrophenol-d4	15.044	143	6351m>	3.400	ng/ul >	0.00 11/04/21JU
60) Fluorene-d10	15.843	176	231304	25.348	ng/ul	0.00
65) 4,6-Dinitro-2-methylph...	15.955	200	40506	20.837	ng/ul	0.00
73) Anthracene-d10	17.700	188	396207	26.137	ng/ul	0.00
81) Pyrene-d10	19.974	212	477518	25.932	ng/ul	0.00
92) Benzo(a)pyrene-d12	25.062	264	388587	24.941	ng/ul	-0.01

Target Compounds Qvalue

(#) = qualifier out of range (m) = manual integration (+) = signals summed