

Data Path : Z:\HPCHEM1\BNA_G\DATA\BG110416\
 Data File : BG024717.D
 Acq On : 5 Nov 2016 17:51
 Operator : UM/SJ
 Sample : H5527-08
 Misc :
 ALS Vial : 31 Sample Multiplier: 1

Instrument :
 BNA_G
 ClientSampleId :
 DUP-110216

Quant Time: Nov 06 23:49:53 2016
 Quant Method : Z:\HPCHEM1\BNA_G\METHODS\8270-BG102516.M
 Quant Title : ASP BNA STANDARDS FOR 5 POINT CALIBRATION
 QLast Update : Wed Oct 26 11:14:13 2016
 Response via : Initial Calibration

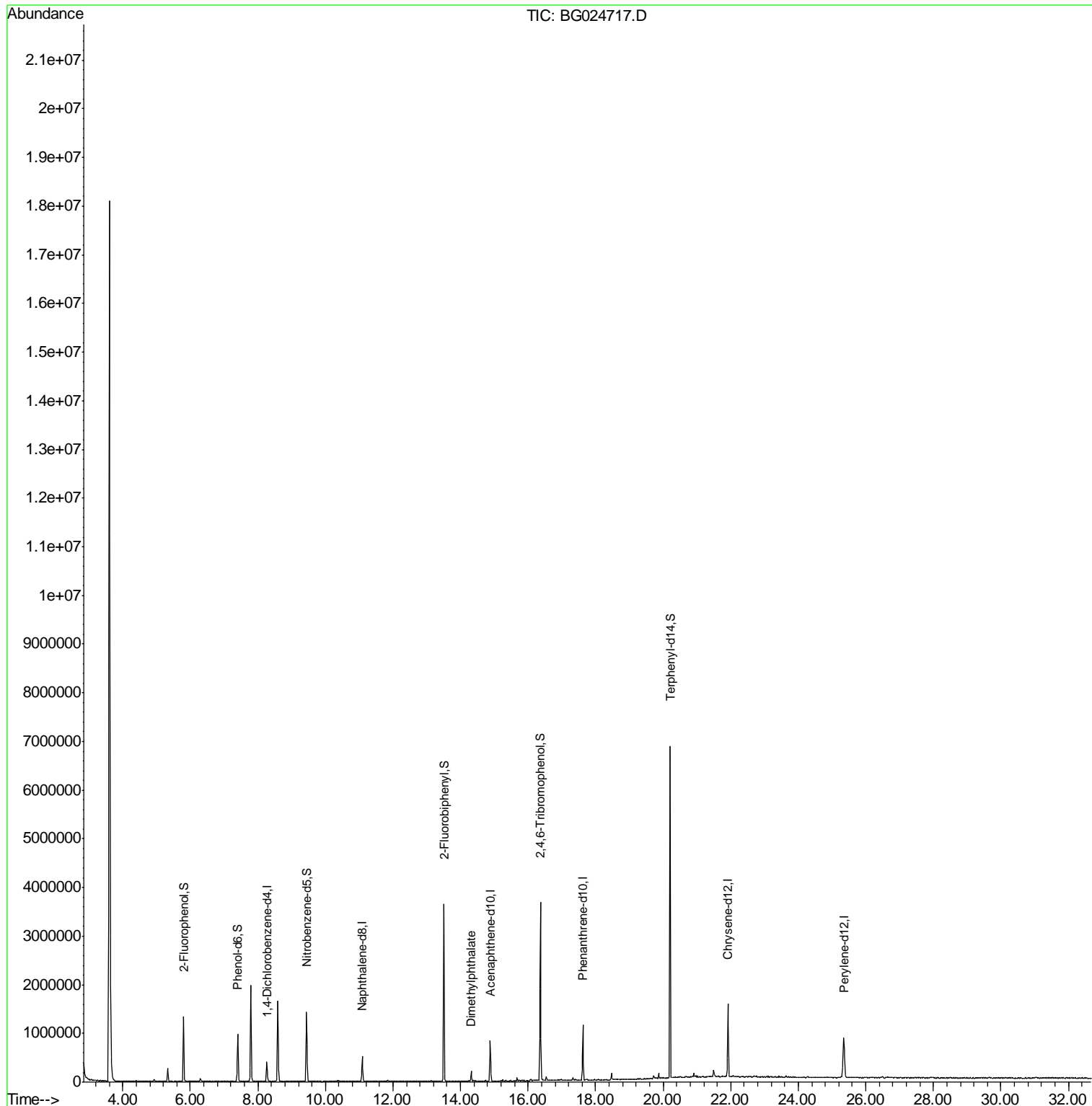
Internal Standards	R.T.	QIon	Response	Conc	Units	Dev(Min)
1) 1,4-Dichlorobenzene-d4	8.27	152	108828	20.00	ng	0.00
21) Naphthalene-d8	11.09	136	409610	20.00	ng	0.00
38) Acenaphthene-d10	14.88	164	315194	20.00	ng	0.00
63) Phenanthrene-d10	17.62	188	741917	20.00	ng	0.00
75) Chrysene-d12	21.92	240	1016545	20.00	ng	-0.01
86) Perylene-d12	25.35	264	1063161	20.00	ng	-0.01
System Monitoring Compounds						
5) 2-Fluorophenol	5.80	112	535604	80.66	ng	0.00
7) Phenol-d6	7.40	99	530130	58.20	ng	0.00
23) Nitrobenzene-d5	9.44	82	893659	99.33	ng	0.00
41) 2,4,6-Tribromophenol	16.36	330	728127	154.63	ng	0.00
44) 2-Fluorobiphenyl	13.51	172	1820191	95.98	ng	0.00
78) Terphenyl-d14	20.21	244	2840912	83.51	ng	0.00
Target Compounds						Qvalue
49) Dimethylphthalate	14.32	163	130347	5.83	ng	# 94

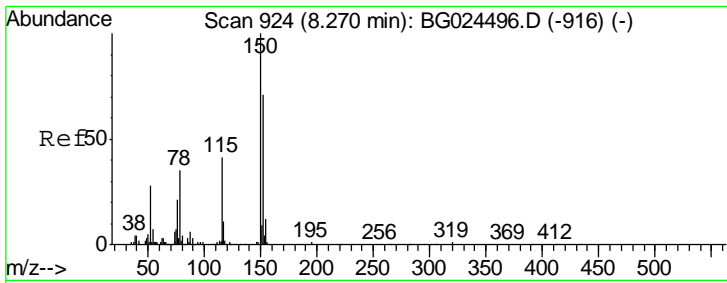
(#) = qualifier out of range (m) = manual integration (+) = signals summed

Data Path : Z:\HPCHEM1\BNA_G\DATA\BG110416\
Data File : BG024717.D
Acq On : 5 Nov 2016 17:51
Operator : UM/SJ
Sample : H5527-08
Misc :
ALS Vial : 31 Sample Multiplier: 1

Instrument :
BNA_G
ClientSampled :
DUP-110216

Quant Time: Nov 06 23:49:53 2016
Quant Method : Z:\HPCHEM1\BNA_G\METHODS\8270-BG102516.M
Quant Title : ASP BNA STANDARDS FOR 5 POINT CALIBRATION
QLast Update : Wed Oct 26 11:14:13 2016
Response via : Initial Calibration

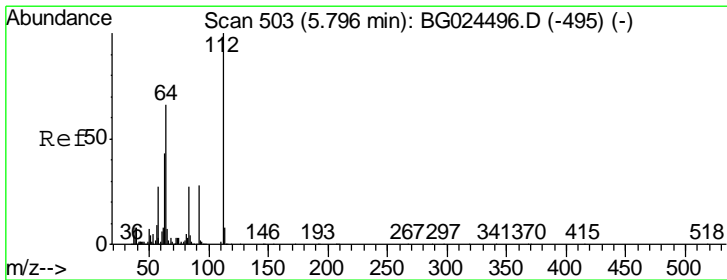
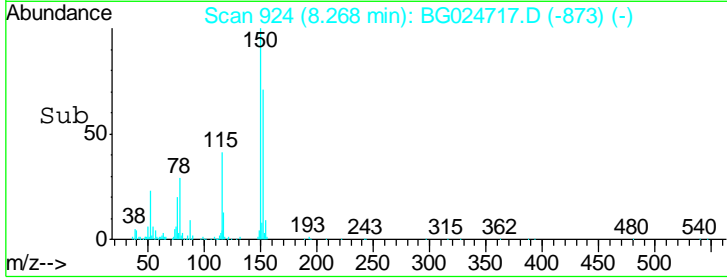
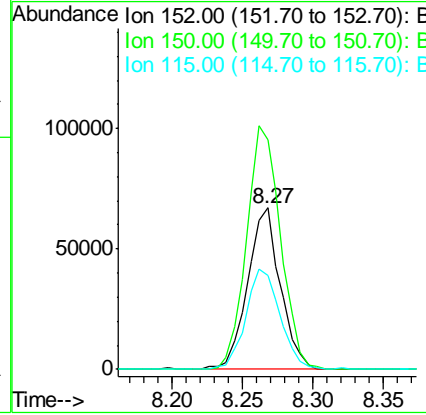
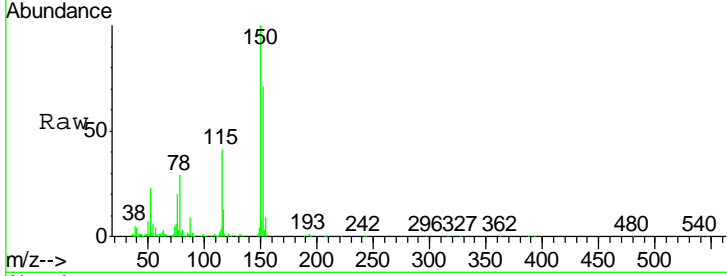




#1
 1,4-Dichlorobenzene-d4
 Concen: 20.00 ng
 RT: 8.27 min Scan# 924
 Delta R.T. -0.00 min
 Lab File: BG024717.D
 Acq: 5 Nov 2016 17:51

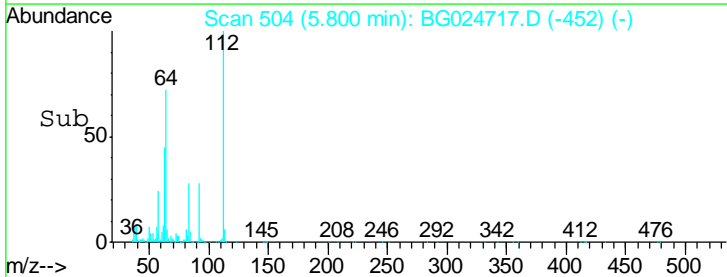
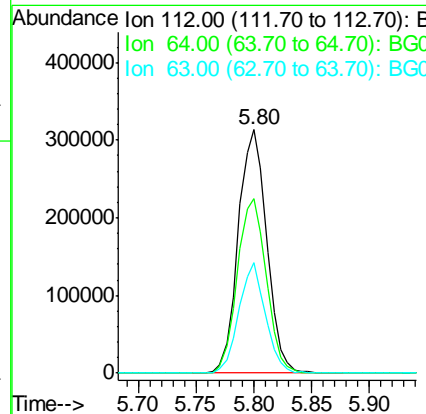
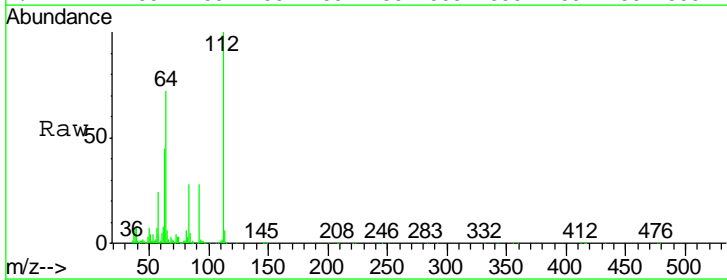
Instrument :
 BNA_G
 ClientSampled :
 DUP-110216

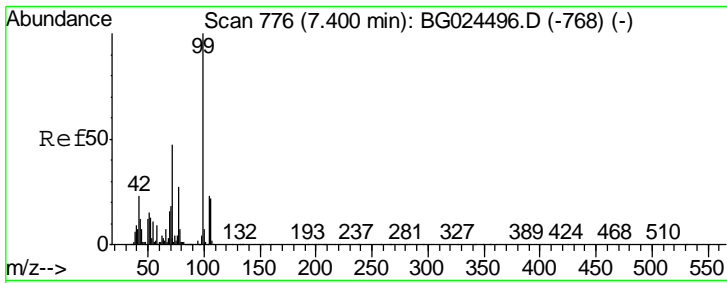
Tgt Ion	Resp	Lower	Upper
152	108828		
152	100		
150	141.8	114.0	171.0
115	58.2	48.1	72.1



#5
 2-Fluorophenol
 Concen: 80.66 ng
 RT: 5.80 min Scan# 504
 Delta R.T. 0.00 min
 Lab File: BG024717.D
 Acq: 5 Nov 2016 17:51

Tgt Ion	Resp	Lower	Upper
112	535604		
112	100		
64	71.5	61.8	92.6
63	45.2	37.2	55.8

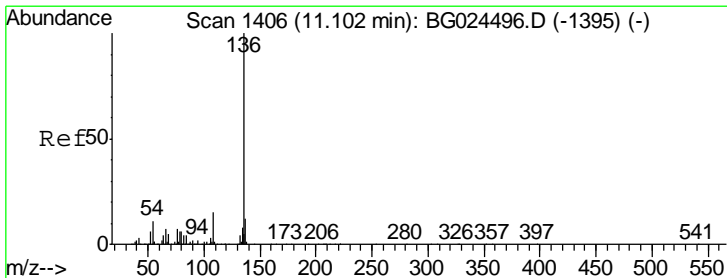
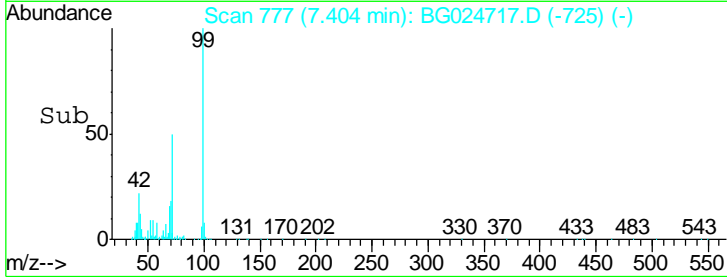
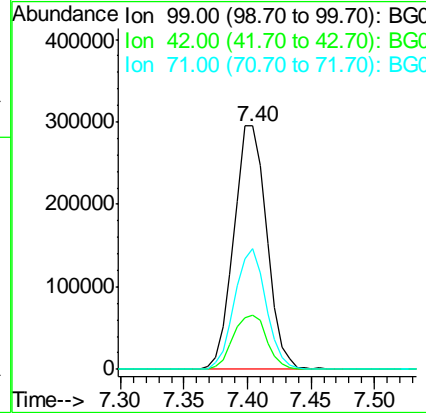
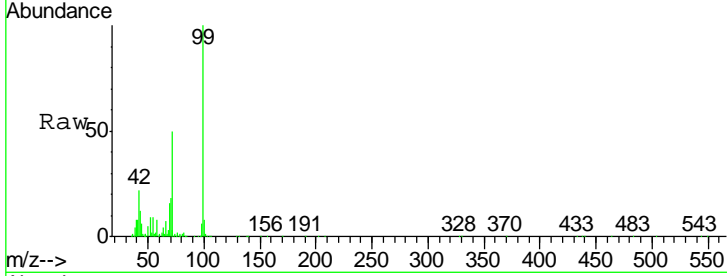




#7
 Phenol-d6
 Concen: 58.20 ng
 RT: 7.40 min Scan# 777
 Delta R.T. 0.00 min
 Lab File: BG024717.D
 Acq: 5 Nov 2016 17:51

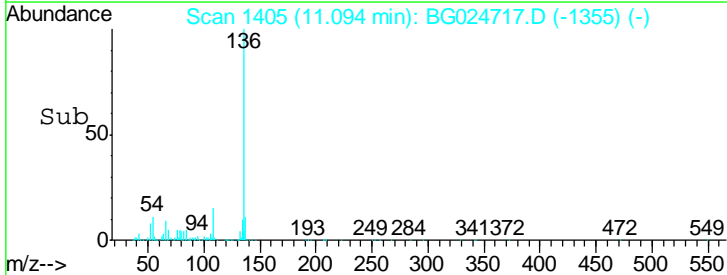
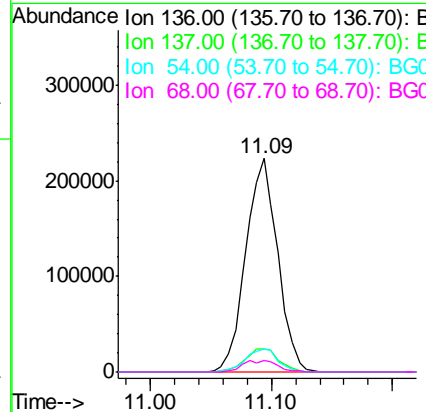
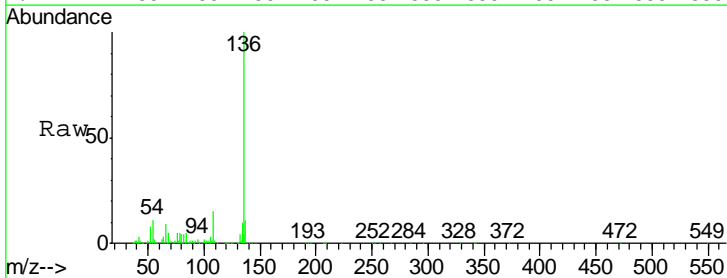
Instrument :
 BNA_G
 ClientSampleId :
 DUP-110216

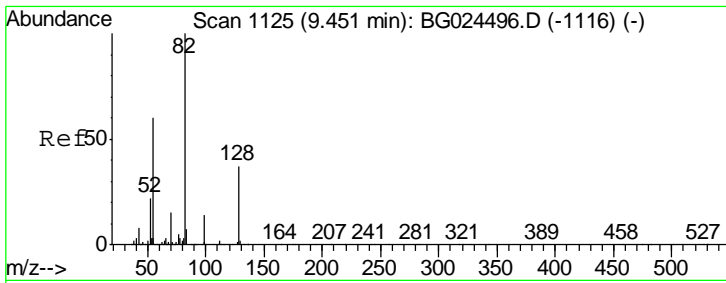
Tgt Ion	Resp	Lower	Upper
99	530130		
42	22.3	20.5	30.7
71	49.6	37.6	56.4



#21
 Naphthalene-d8
 Concen: 20.00 ng
 RT: 11.09 min Scan# 1405
 Delta R.T. -0.01 min
 Lab File: BG024717.D
 Acq: 5 Nov 2016 17:51

Tgt Ion	Resp	Lower	Upper
136	409610		
137	10.7	8.9	13.3
54	10.8	9.3	13.9
68	5.4	5.1	7.7

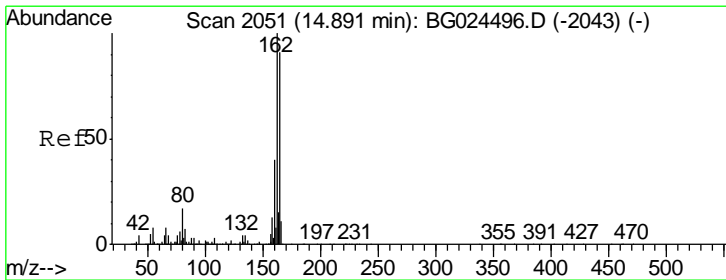
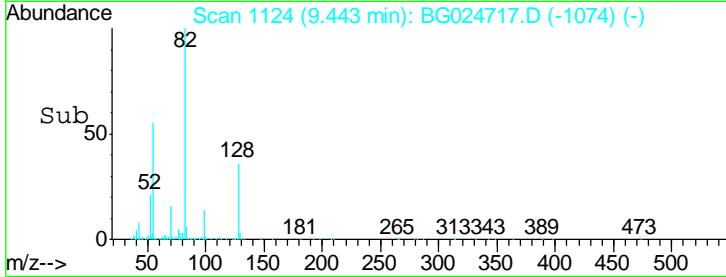
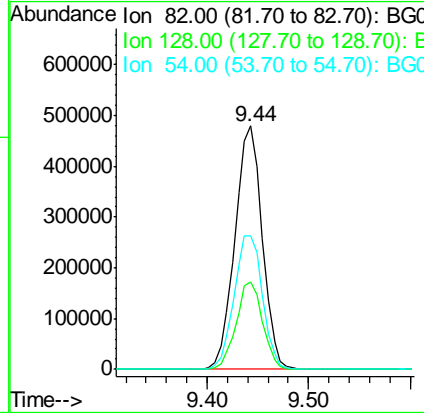
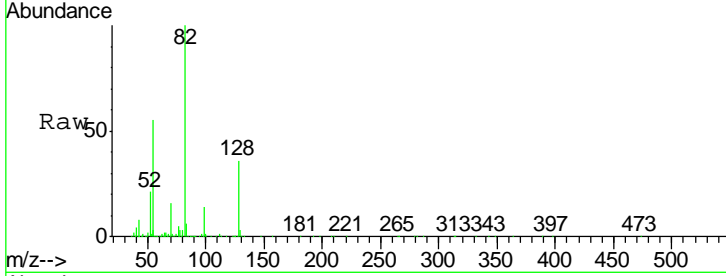




#23
 Nitrobenzene-d5
 Concen: 99.33 ng
 RT: 9.44 min Scan# 1124
 Delta R.T. -0.01 min
 Lab File: BG024717.D
 Acq: 5 Nov 2016 17:51

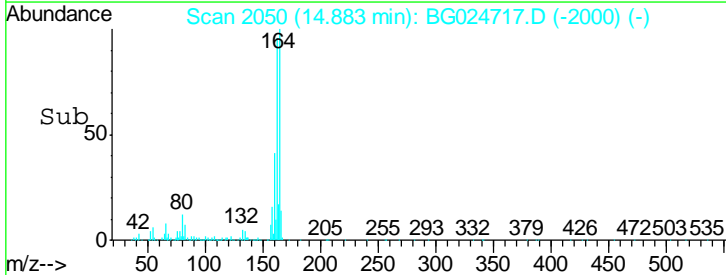
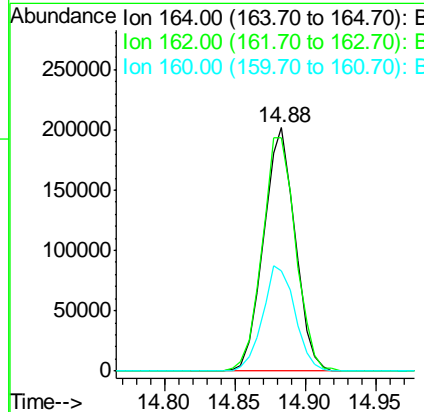
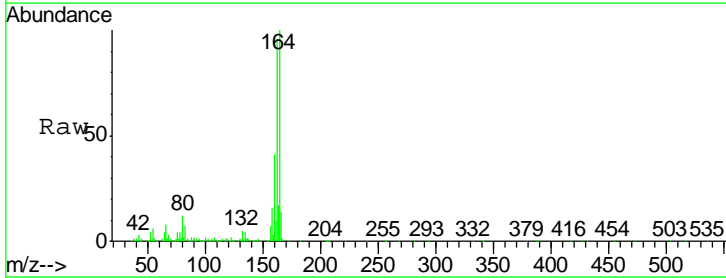
Instrument :
 BNA_G
 ClientSampled :
 DUP-110216

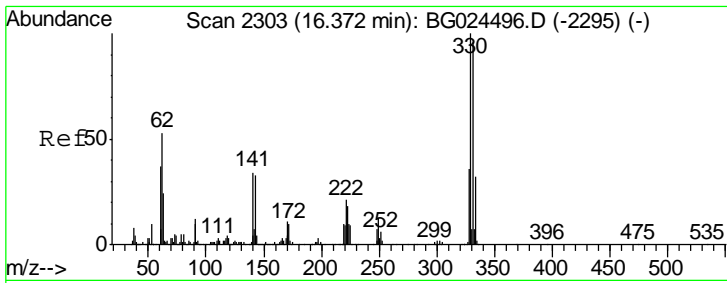
Tgt Ion	Resp	Lower	Upper
82	100		
128	36.1	26.4	39.6
54	54.9	49.4	74.2



#38
 Acenaphthene-d10
 Concen: 20.00 ng
 RT: 14.88 min Scan# 2050
 Delta R.T. -0.01 min
 Lab File: BG024717.D
 Acq: 5 Nov 2016 17:51

Tgt Ion	Resp	Lower	Upper
164	100		
162	96.1	85.1	127.7
160	41.1	34.7	52.1

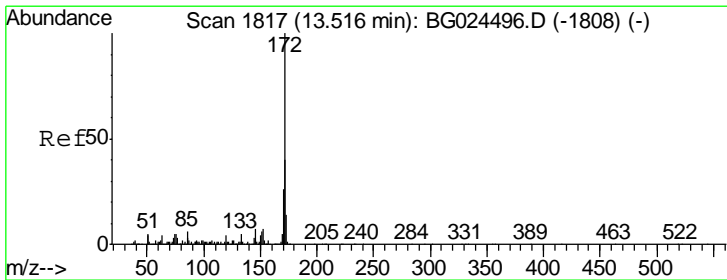
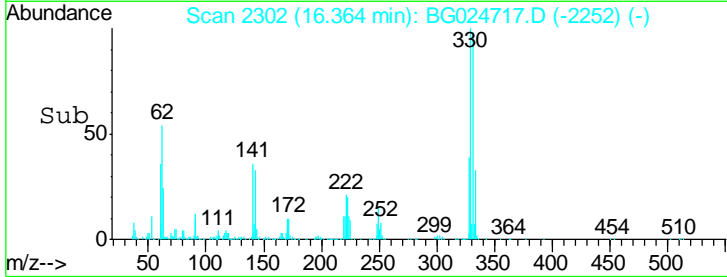
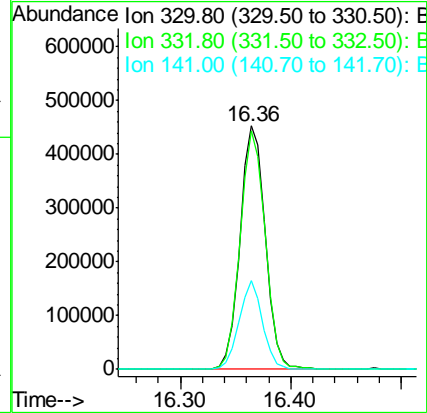
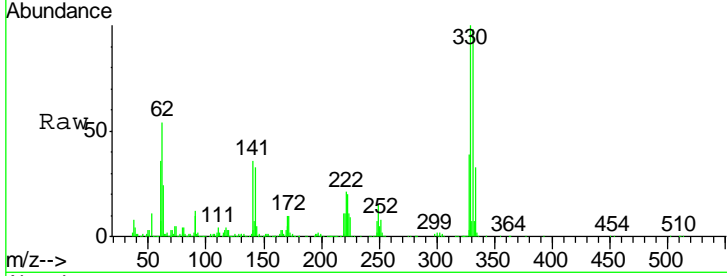




#41
 2,4,6-Tribromophenol
 Concen: 154.63 ng
 RT: 16.36 min Scan# 2302
 Delta R.T. -0.01 min
 Lab File: BG024717.D
 Acq: 5 Nov 2016 17:51

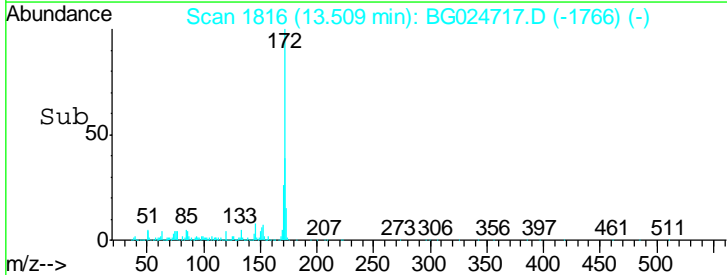
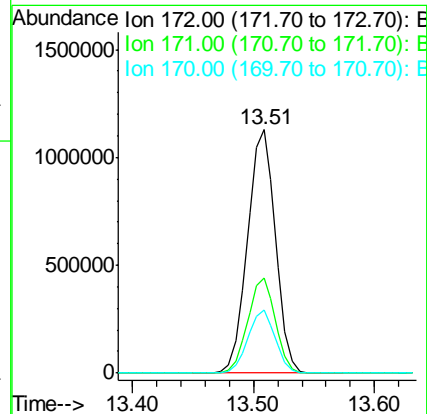
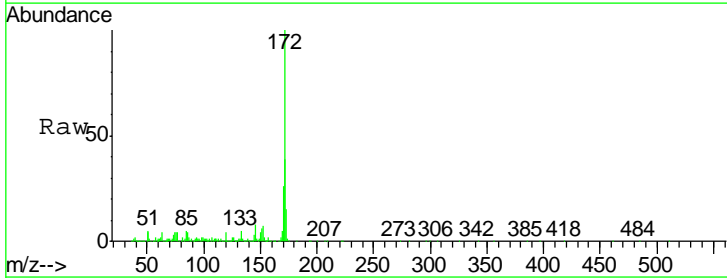
Instrument :
 BNA_G
 ClientSampleId :
 DUP-110216

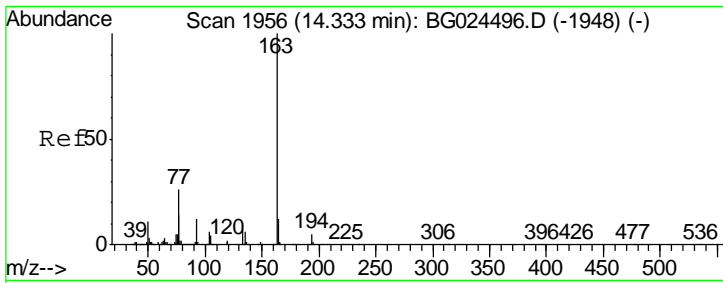
Tgt Ion	Resp	Lower	Upper
330	100		
332	97.8	77.3	115.9
141	33.8	32.1	48.1



#44
 2-Fluorobiphenyl
 Concen: 95.98 ng
 RT: 13.51 min Scan# 1816
 Delta R.T. -0.01 min
 Lab File: BG024717.D
 Acq: 5 Nov 2016 17:51

Tgt Ion	Resp	Lower	Upper
172	100		
171	39.0	32.2	48.2
170	25.9	21.8	32.6

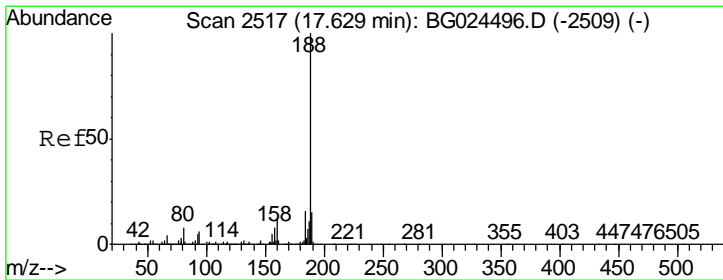
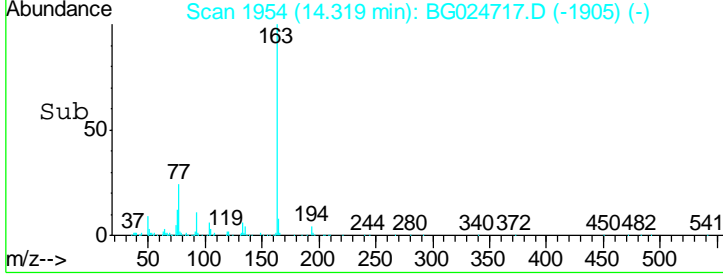
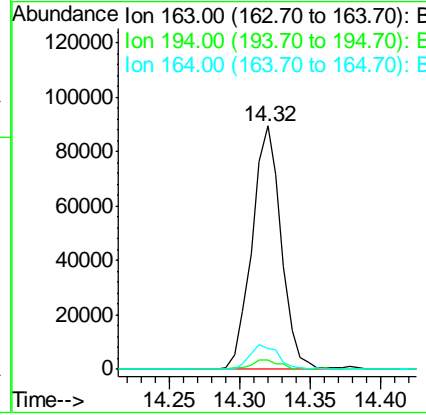
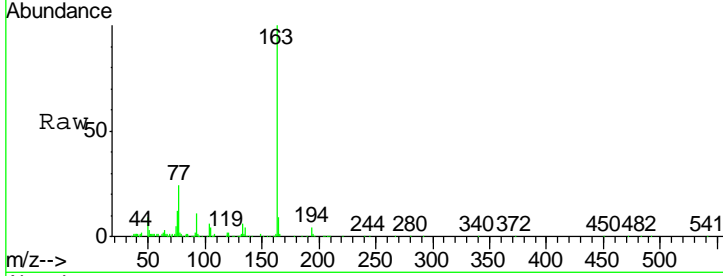




#49
 Dimethylphthalate
 Concen: 5.83 ng
 RT: 14.32 min Scan# 1954
 Delta R.T. -0.01 min
 Lab File: BG024717.D
 Acq: 5 Nov 2016 17:51

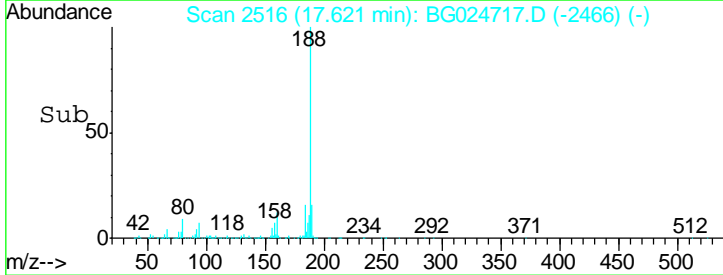
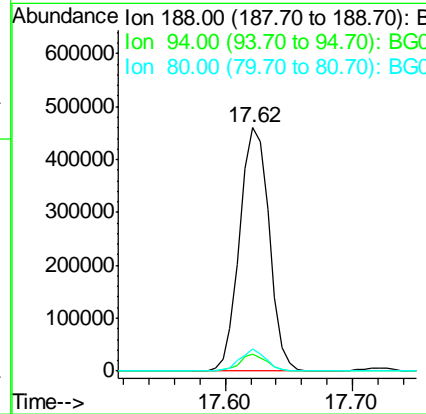
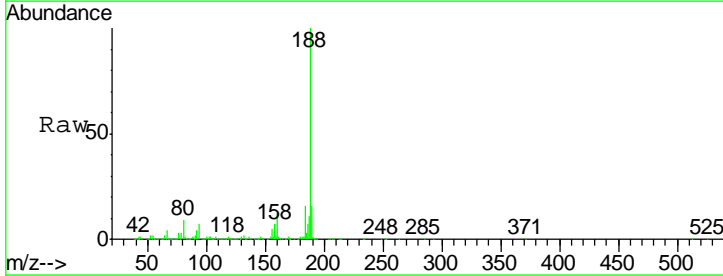
Instrument :
 BNA_G
 ClientSampleId :
 DUP-110216

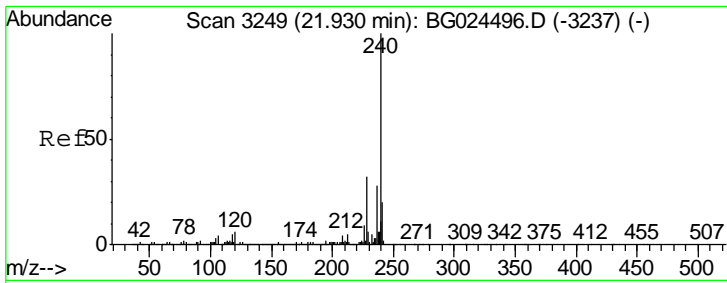
Tgt Ion	Resp	Lower	Upper
163	130347		
194	4.0	3.8	5.6
164	8.5	9.3	13.9#



#63
 Phenanthrene-d10
 Concen: 20.00 ng
 RT: 17.62 min Scan# 2516
 Delta R.T. -0.01 min
 Lab File: BG024717.D
 Acq: 5 Nov 2016 17:51

Tgt Ion	Resp	Lower	Upper
188	741917		
94	7.2	5.8	8.8
80	9.0	7.5	11.3



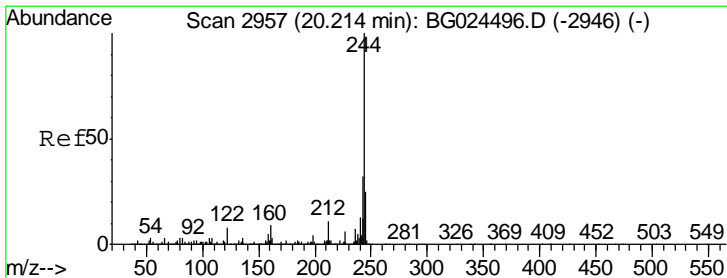
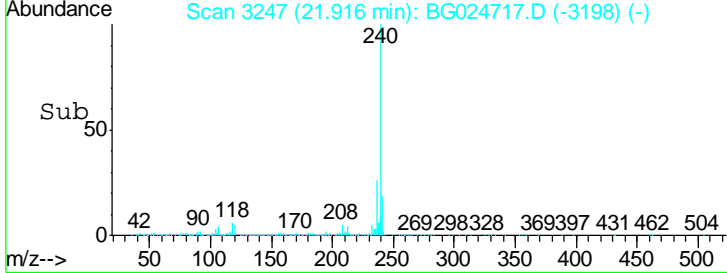
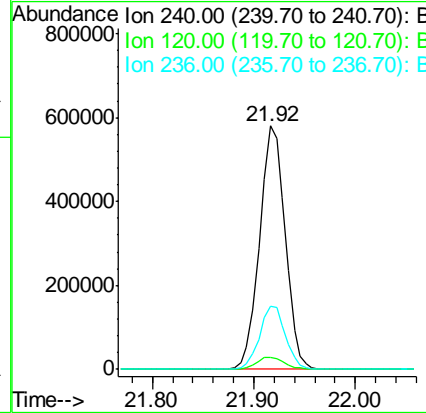
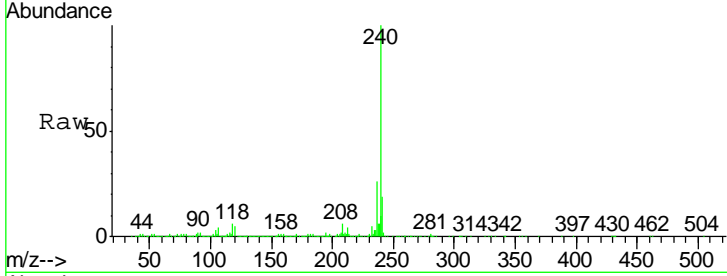


#75
 Chrysene-d12
 Concen: 20.00 ng
 RT: 21.92 min Scan# 3247
 Delta R.T. -0.01 min
 Lab File: BG024717.D
 Acq: 5 Nov 2016 17:51

Instrument :
 BNA_G
 ClientSampled :
 DUP-110216

Tgt Ion: 240 Resp: 1016545

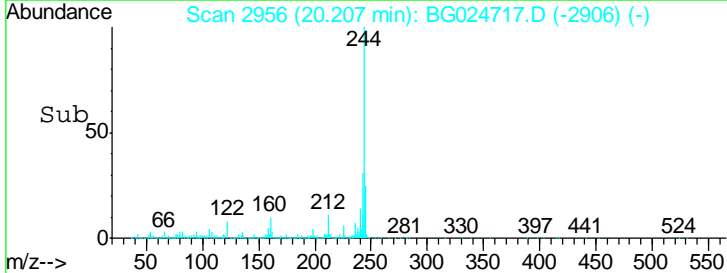
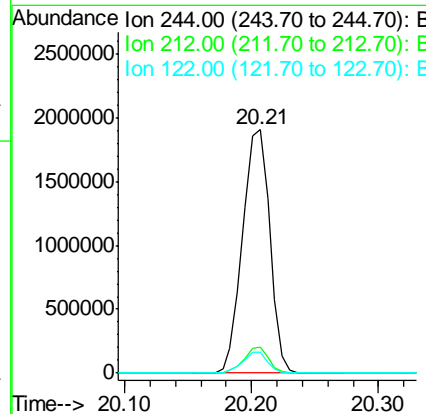
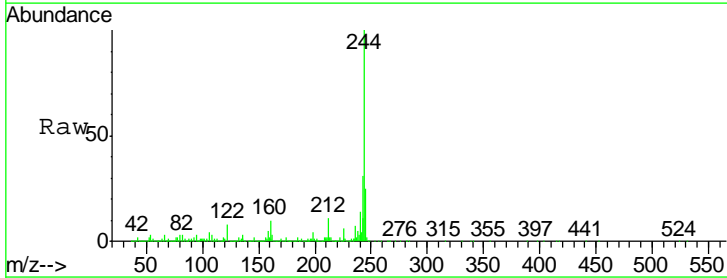
Ion	Ratio	Lower	Upper
240	100		
120	4.8	5.7	8.5#
236	26.1	22.2	33.4

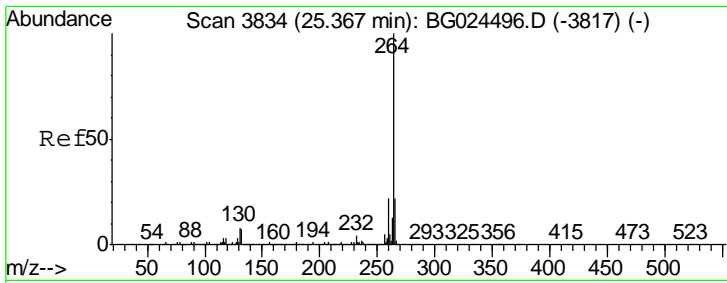


#78
 Terphenyl-d14
 Concen: 83.51 ng
 RT: 20.21 min Scan# 2956
 Delta R.T. -0.01 min
 Lab File: BG024717.D
 Acq: 5 Nov 2016 17:51

Tgt Ion: 244 Resp: 2840912

Ion	Ratio	Lower	Upper
244	100		
212	10.7	10.0	15.0
122	8.4	8.6	12.8#





#86
 Perylene-d12
 Concen: 20.00 ng
 RT: 25.35 min Scan# 3832
 Delta R.T. -0.01 min
 Lab File: BG024717.D
 Acq: 5 Nov 2016 17:51

Instrument :
 BNA_G
ClientSampled :
 DUP-110216

Tgt Ion: 264 Resp: 1063161

Ion	Ratio	Lower	Upper
264	100		
260	21.8	21.8	32.8#
265	21.4	18.2	27.4

