

Data Path : Z:\SVOASRV\HPCHEM1\BNA G\DATA\BG110419\
 Data File : BG043484.D
 Acq On : 4 Nov 2019 17:12
 Operator : JU
 Sample : K5612-01
 Misc :
 ALS Vial : 6 Sample Multiplier: 1

Instrument :
 BNA_G
 ClientSampleId :
 DRUM-COMP

Quant Time: Nov 05 00:56:07 2019
 Quant Method : Z:\SVOASRV\HPCHEM1\BNA G\METHODS\8270-BG102119.M
 Quant Title : ASP BNA STANDARDS FOR 5 POINT CALIBRATION
 QLast Update : Mon Nov 04 15:22:15 2019
 Response via : Initial Calibration

Internal Standards	R.T.	QIon	Response	Conc	Units	Dev(Min)
1) 1,4-Dichlorobenzene-d4	8.01	152	42713	20.00	ng	0.00
21) Naphthalene-d8	10.82	136	167461	20.00	ng	0.00
39) Acenaphthene-d10	14.64	164	567975	20.00	ng	0.00
64) Phenanthrene-d10	17.39	188	274508	20.00	ng	0.00
76) Chrysene-d12	21.65	240	312638	20.00	ng	0.00
87) Perylene-d12	24.85	264	372691	20.00	ng	0.00

System Monitoring Compounds

5) 2-Fluorophenol	5.60	112	171659	73.64	ng	0.00
7) Phenol-d6	7.19	99	168788	50.33	ng	0.00
23) Nitrobenzene-d5	9.17	82	216095	66.53	ng	0.00
42) 2,4,6-Tribromophenol	16.13	330	228417	21.13	ng	0.00
45) 2-Fluorobiphenyl	13.26	172	569771	13.86	ng	0.00
79) Terphenyl-d14	20.00	244	1154852	69.30	ng	0.00

Target Compounds

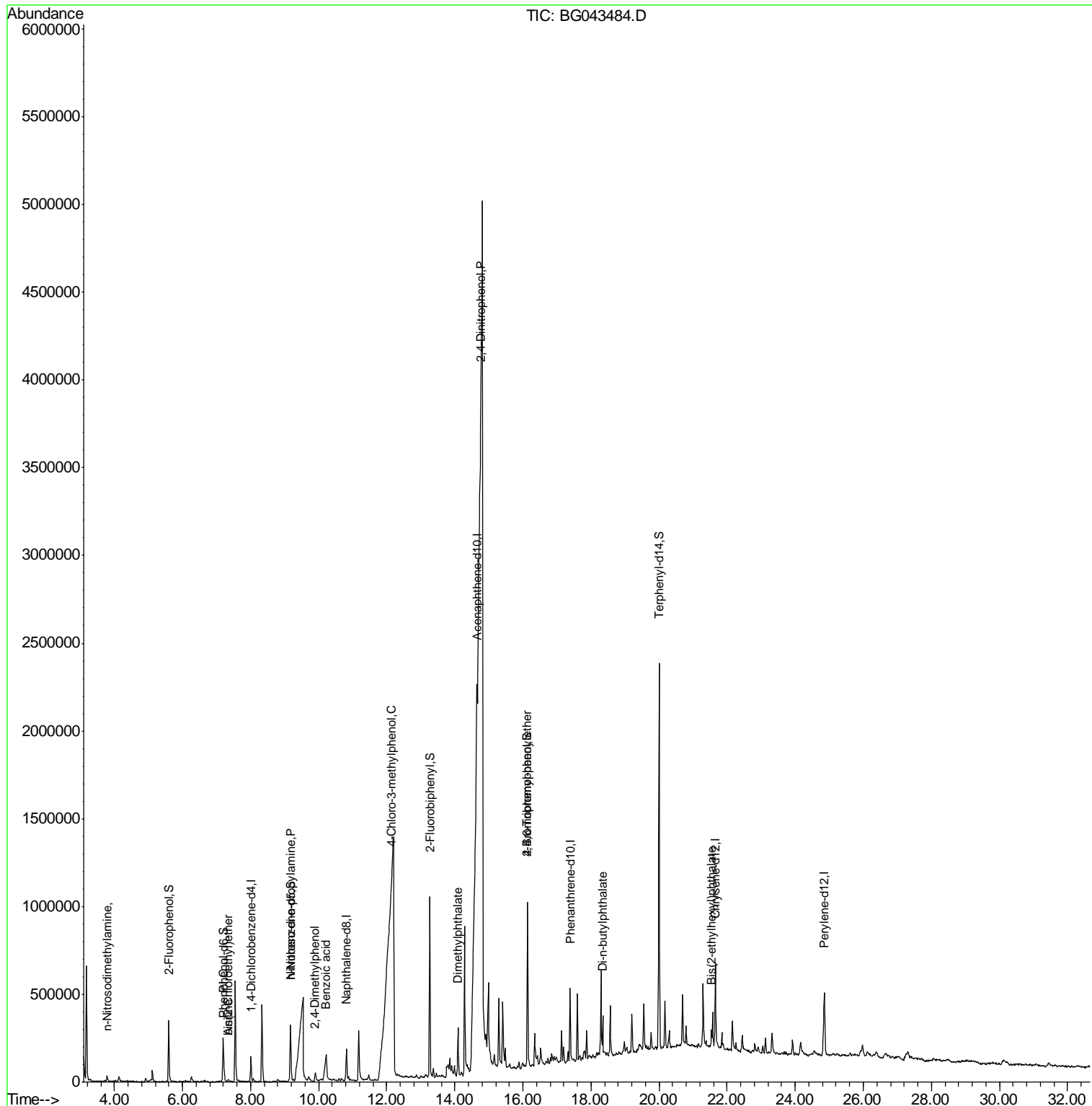
Target Compounds	R.T.	QIon	Response	Conc	Units	Qvalue
4) n-Nitrosodimethylamine	3.79	42	2401	2.077	ng	# 1
6) Aniline	7.34	93	10481	2.713	ng	94
10) Phenol	7.22	94	29141	9.509	ng	95
11) bis(2-Chloroethyl)ether	7.34	93	10481	4.424	ng	# 26
19) n-Nitroso-di-n-propylamine	9.17	70	29336	13.537	ng	# 78
27) 2,4-Dimethylphenol	9.89	122	11341	5.297	ng	# 81
32) Benzoic acid	10.22	122	106918	62.118	ng	94
36) 4-Chloro-3-methylphenol	12.13	107	62407	20.855	ng	# 22
50) Dimethylphthalate	14.09	163	175055	3.979	ng	98
54) 2,4-Dinitrophenol	14.75	184	138	7.304	ng	# 1
67) 4-Bromophenyl-phenylether	16.13	248	14362	3.888	ng	# 1
74) Di-n-butylphthalate	18.34	149	145518	9.417	ng	100
84) Bis(2-ethylhexyl)phthalate	21.54	149	42370	4.068	ng	99

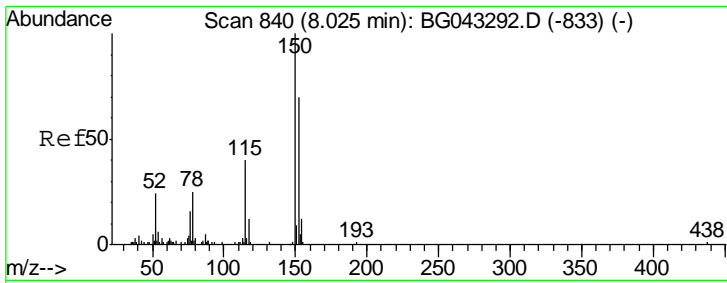
(#) = qualifier out of range (m) = manual integration (+) = signals summed

Data Path : Z:\SVOASRV\HPCHEM1\BNA G\DATA\BG110419\
 Data File : BG043484.D
 Acq On : 4 Nov 2019 17:12
 Operator : JU
 Sample : K5612-01
 Misc :
 ALS Vial : 6 Sample Multiplier: 1

Instrument :
 BNA_G
 ClientSampleId :
 DRUM-COMP

Quant Time: Nov 05 00:56:07 2019
 Quant Method : Z:\SVOASRV\HPCHEM1\BNA G\METHODS\8270-BG102119.M
 Quant Title : ASP BNA STANDARDS FOR 5 POINT CALIBRATION
 QLast Update : Mon Nov 04 15:22:15 2019
 Response via : Initial Calibration

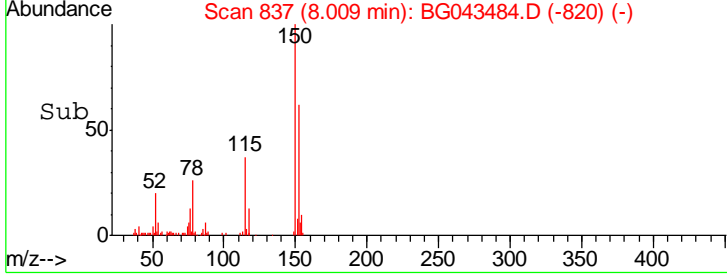
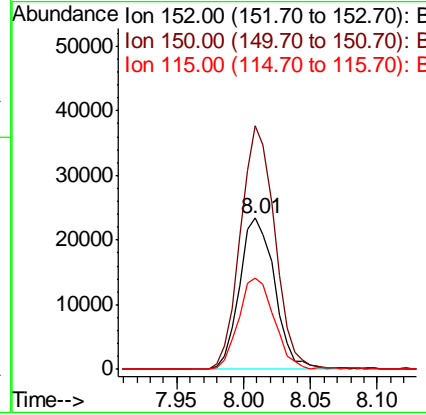
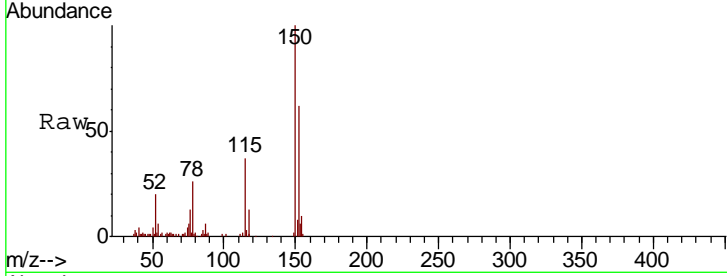




#1
 1,4-Dichlorobenzene-d4
 Concen: 20.000 ng
 RT: 8.01 min Scan# 837
 Delta R.T. 0.00 min
 Lab File: BG043484.D
 Acq: 4 Nov 2019 17:12

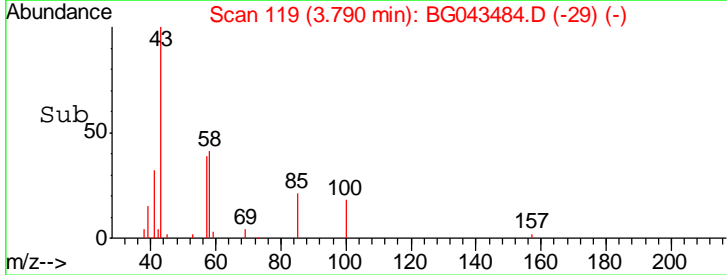
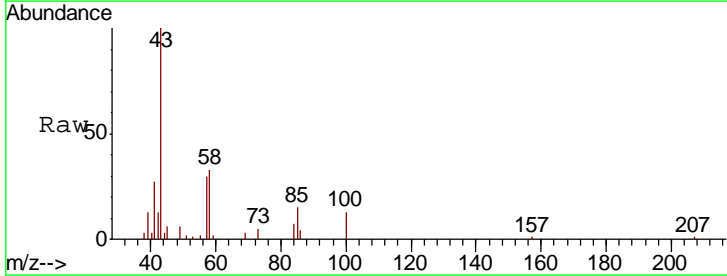
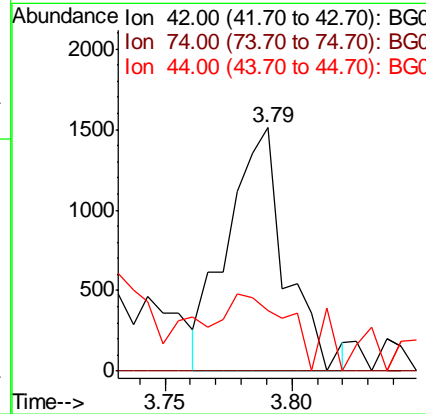
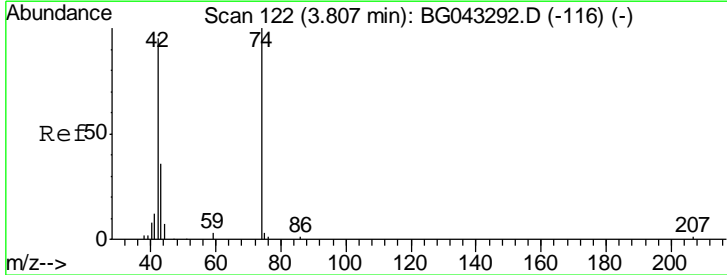
Instrument :
 BNA_G
ClientSampled :
 DRUM-COMP

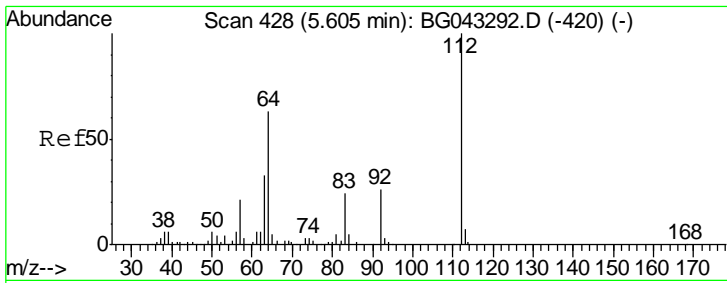
Tgt Ion	Resp	Lower	Upper
152	42713		
150	161.1	129.4	194.0
115	60.2	48.8	73.2



#4
 n-Nitrosodimethylamine
 Concen: 2.077 ng
 RT: 3.79 min Scan# 119
 Delta R.T. 0.00 min
 Lab File: BG043484.D
 Acq: 4 Nov 2019 17:12

Tgt Ion	Resp	Lower	Upper
42	2401		
74	0.0	97.3	145.9#
44	24.7	4.4	6.6#

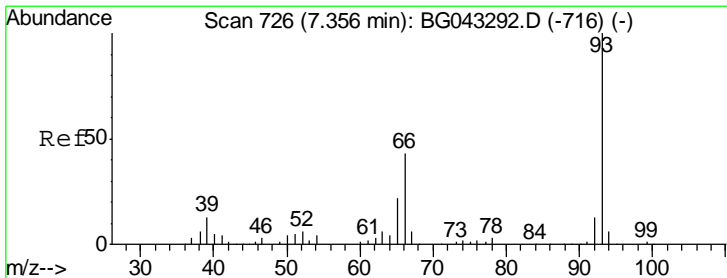
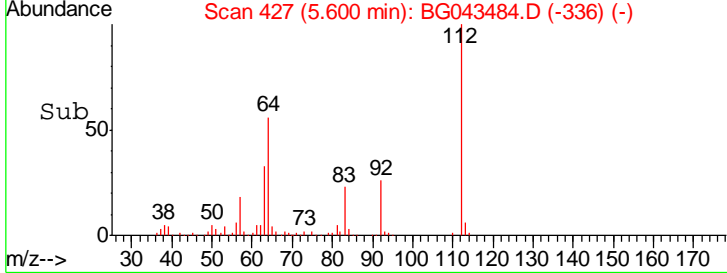
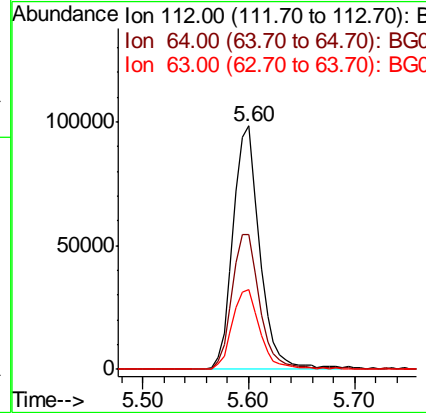
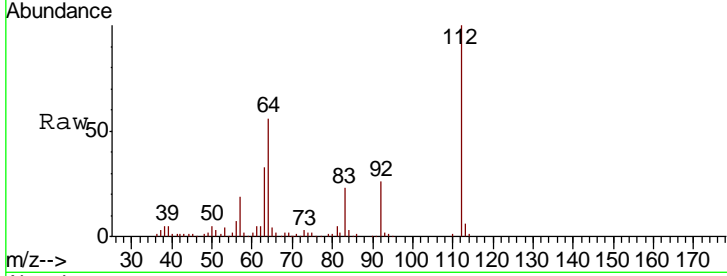




#5
 2-Fluorophenol
 Concen: 73.644 ng
 RT: 5.60 min Scan# 427
 Delta R.T. 0.01 min
 Lab File: BG043484.D
 Acq: 4 Nov 2019 17:12

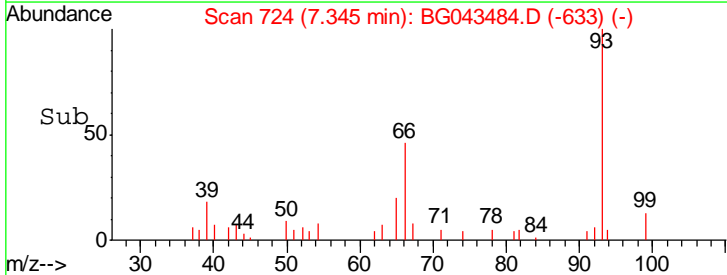
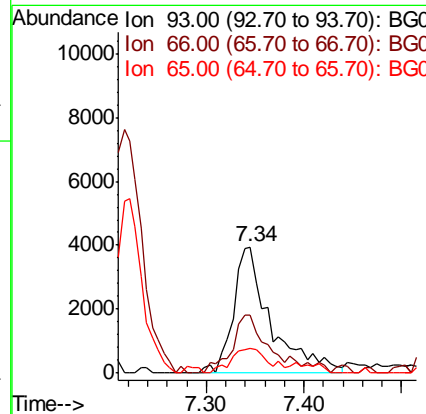
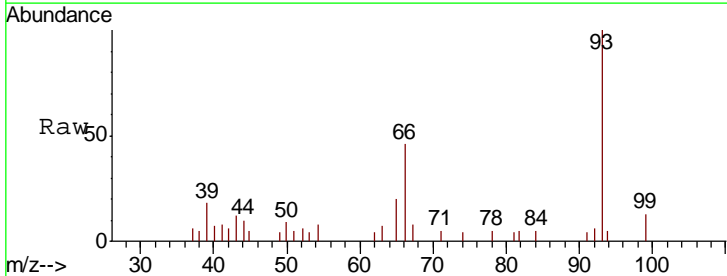
Instrument :
 BNA_G
 ClientSampleID :
 DRUM-COMP

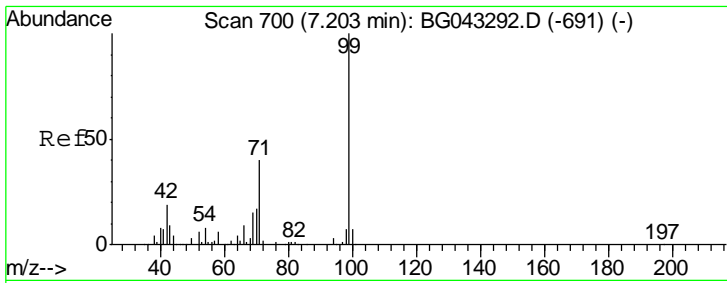
Tgt Ion	Resp	Lower	Upper
112	171659		
64	55.6	50.0	75.0
63	32.6	26.6	40.0



#6
 Aniline
 Concen: 2.713 ng
 RT: 7.34 min Scan# 724
 Delta R.T. 0.01 min
 Lab File: BG043484.D
 Acq: 4 Nov 2019 17:12

Tgt Ion	Resp	Lower	Upper
93	10481		
66	45.8	32.3	48.5
65	19.6	16.1	24.1

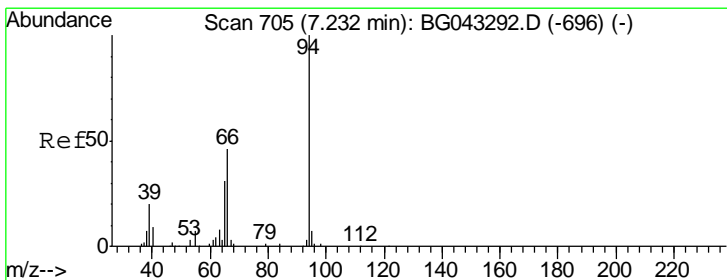
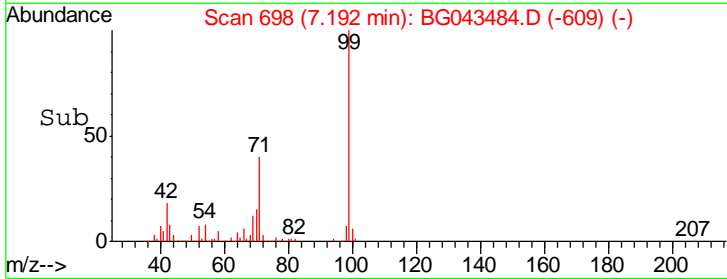
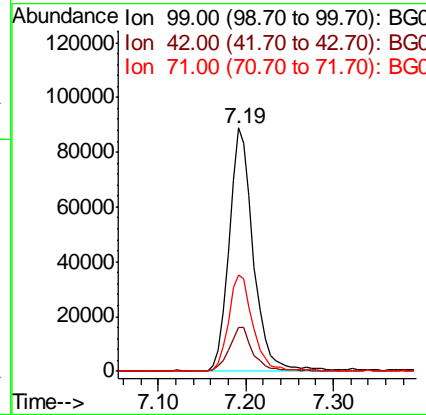
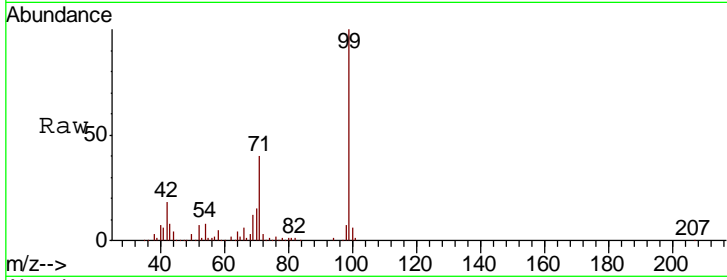




#7
 Phenol-d6
 Concen: 50.330 ng
 RT: 7.19 min Scan# 698
 Delta R.T. -0.00 min
 Lab File: BG043484.D
 Acq: 4 Nov 2019 17:12

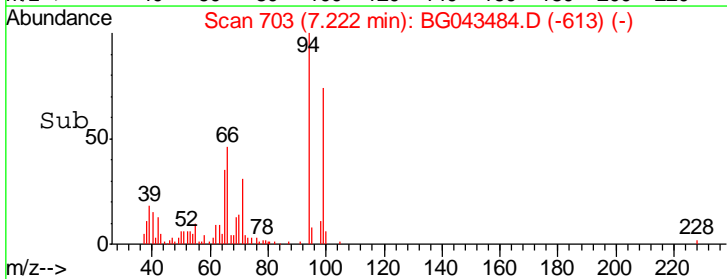
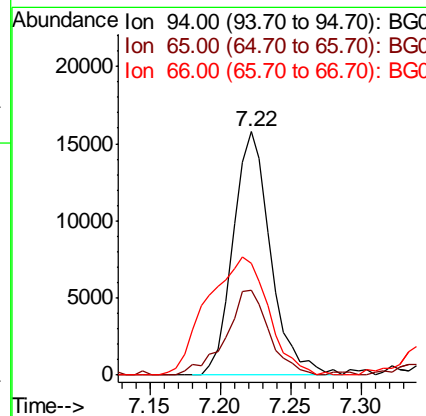
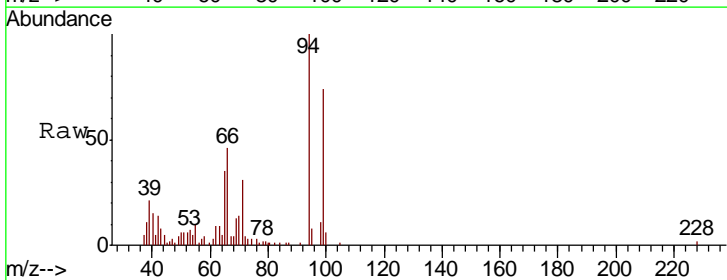
Instrument :
 BNA_G
 ClientSampleId :
 DRUM-COMP

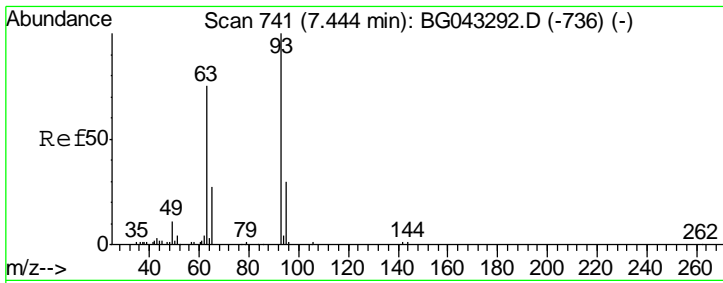
Tgt Ion	Resp	Lower	Upper
99	168788		
42	17.9	14.6	21.8
71	39.5	32.5	48.7



#10
 Phenol
 Concen: 9.509 ng
 RT: 7.22 min Scan# 703
 Delta R.T. 0.00 min
 Lab File: BG043484.D
 Acq: 4 Nov 2019 17:12

Tgt Ion	Resp	Lower	Upper
94	29141		
65	34.6	12.6	52.6
66	46.1	30.7	70.7

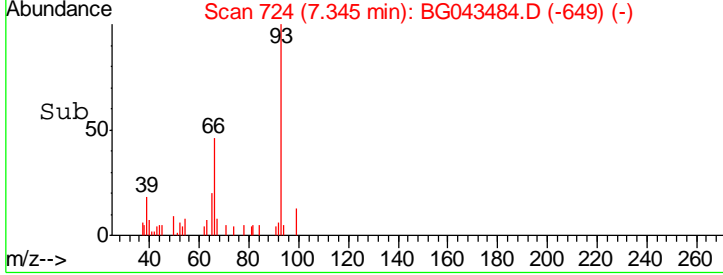
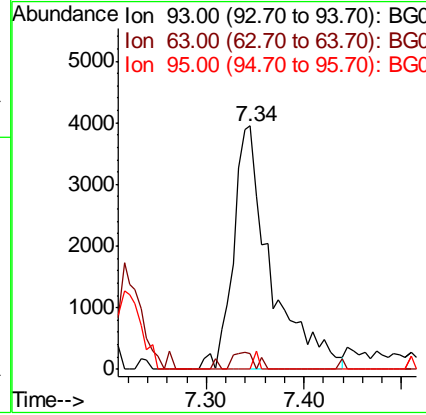
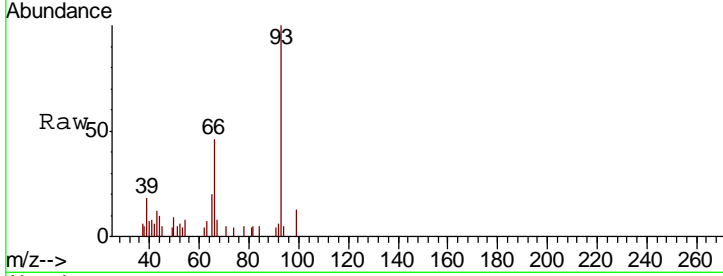




#11
 bis(2-Chloroethyl)ether
 Concen: 4.424 ng
 RT: 7.34 min Scan# 724
 Delta R.T. -0.09 min
 Lab File: BG043484.D
 Acq: 4 Nov 2019 17:12

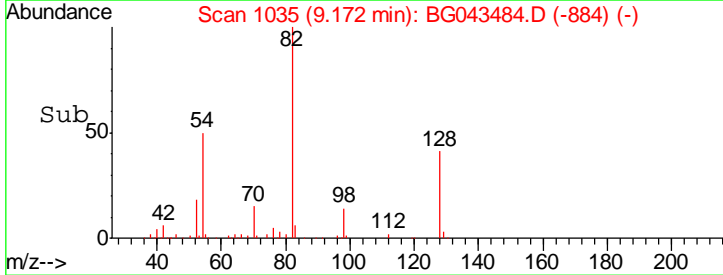
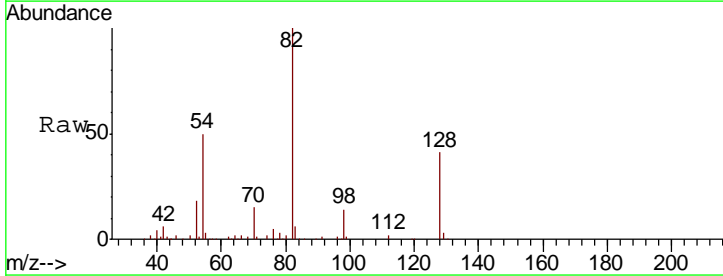
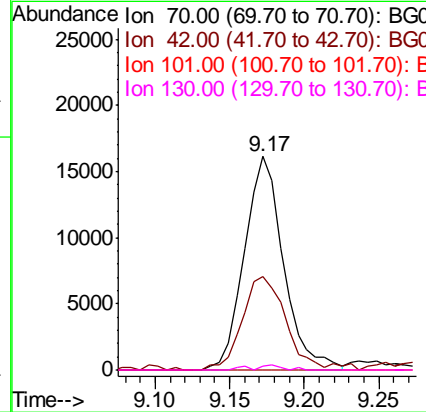
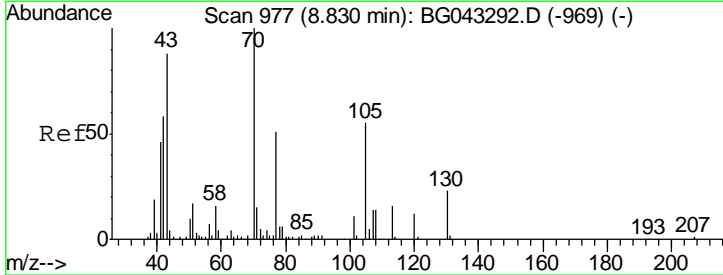
Instrument :
 BNA_G
 ClientSampled :
 DRUM-COMP

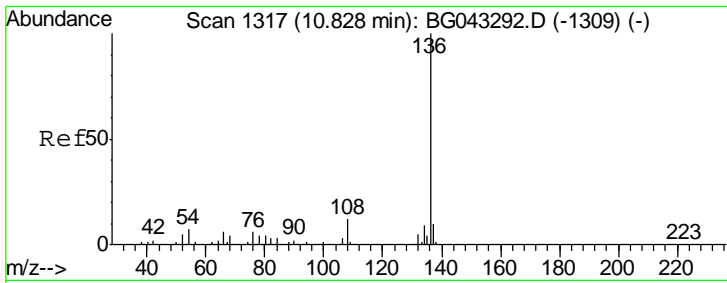
Tgt Ion	Resp	Lower	Upper
93	10481		
63	6.7	56.3	96.3#
95	0.0	12.2	52.2#



#19
 n-Nitroso-di-n-propylamine
 Concen: 13.537 ng
 RT: 9.17 min Scan# 1035
 Delta R.T. 0.36 min
 Lab File: BG043484.D
 Acq: 4 Nov 2019 17:12

Tgt Ion	Resp	Lower	Upper
70	29336		
42	44.0	41.4	62.2
101	0.0	7.9	11.9#
130	2.1	19.0	28.4#

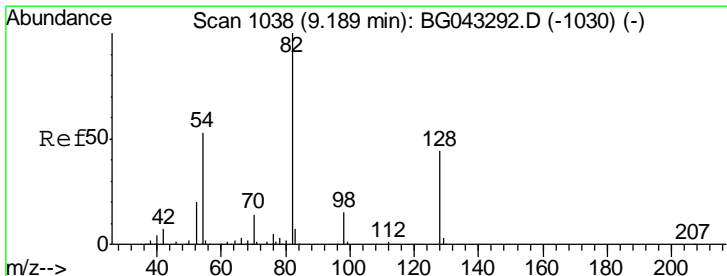
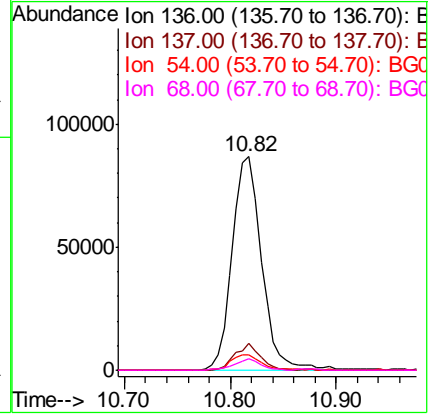
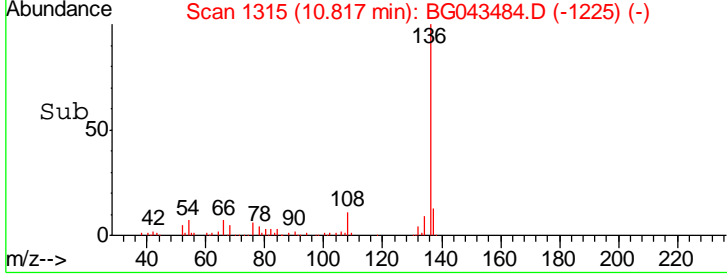
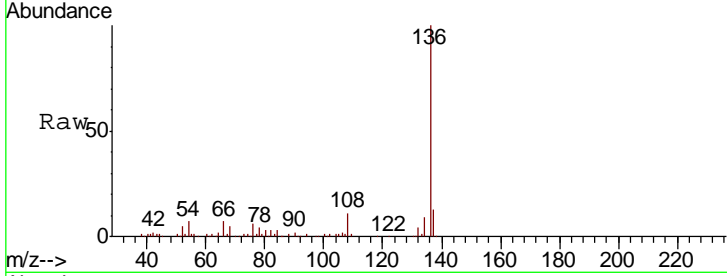




#21
 Naphthalene-d8
 Concen: 20.000 ng
 RT: 10.82 min Scan# 1315
 Delta R.T. 0.00 min
 Lab File: BG043484.D
 Acq: 4 Nov 2019 17:12

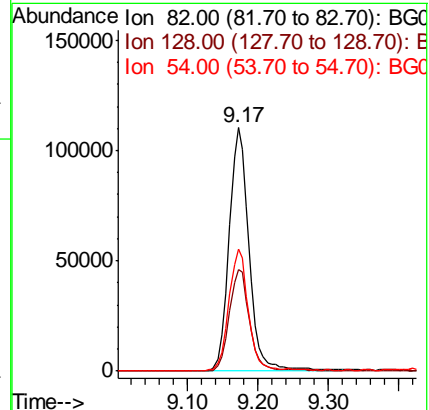
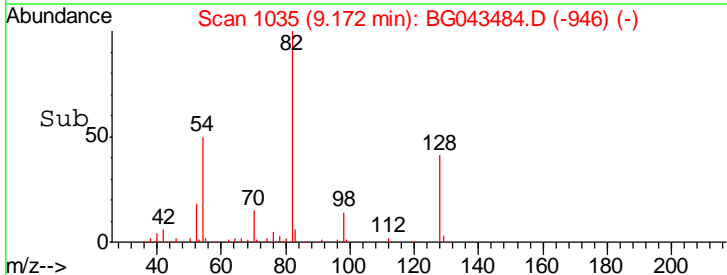
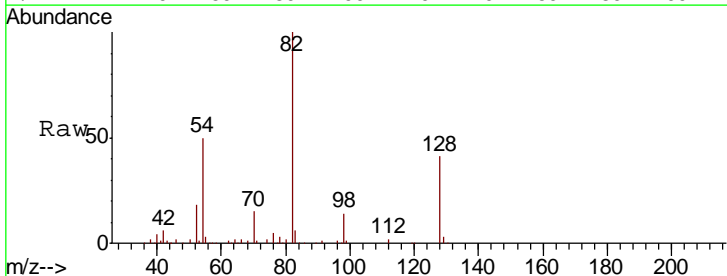
Instrument :
 BNA_G
 ClientSampled :
 DRUM-COMP

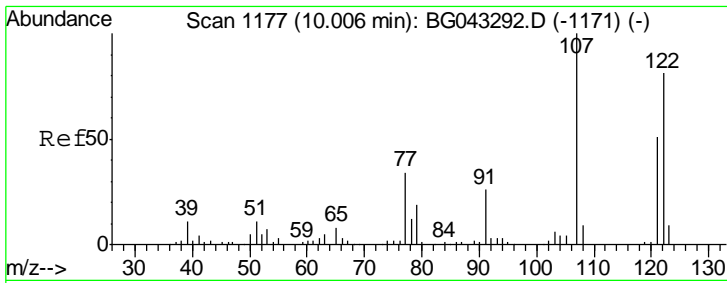
Tgt Ion	Resp	Lower	Upper
136	167461		
137	12.8	8.7	13.1
54	7.4	5.4	8.2
68	5.3	3.0	4.4#



#23
 Nitrobenzene-d5
 Concen: 66.527 ng
 RT: 9.17 min Scan# 1035
 Delta R.T. -0.00 min
 Lab File: BG043484.D
 Acq: 4 Nov 2019 17:12

Tgt Ion	Resp	Lower	Upper
82	216095		
128	41.5	35.0	52.6
54	50.3	40.2	60.2

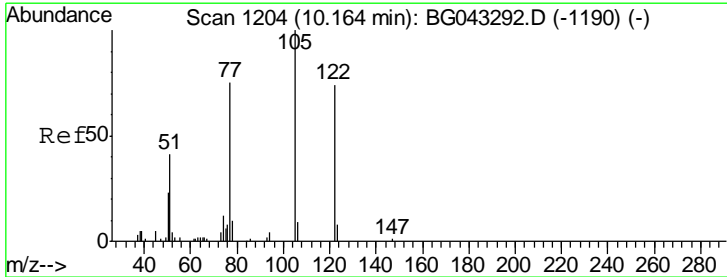
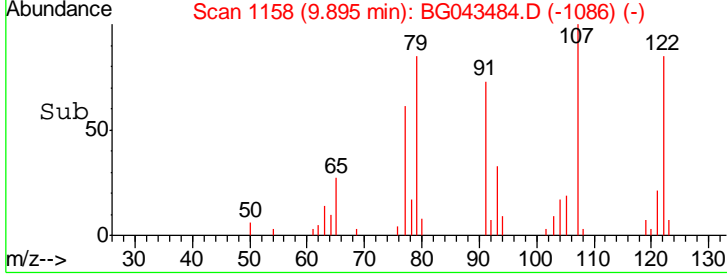
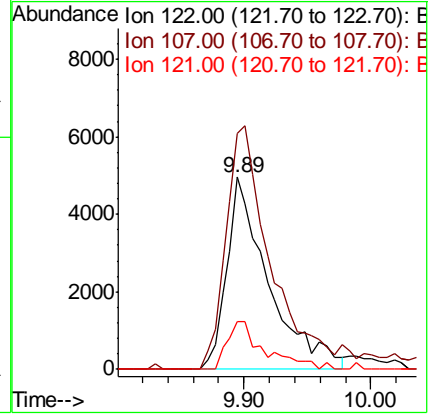
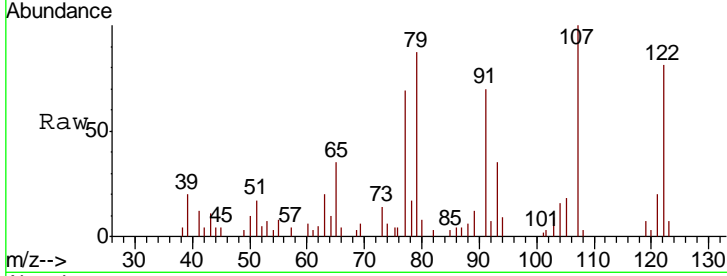




#27
 2,4-Dimethylphenol
 Concen: 5.297 ng
 RT: 9.89 min Scan# 1158
 Delta R.T. -0.10 min
 Lab File: BG043484.D
 Acq: 4 Nov 2019 17:12

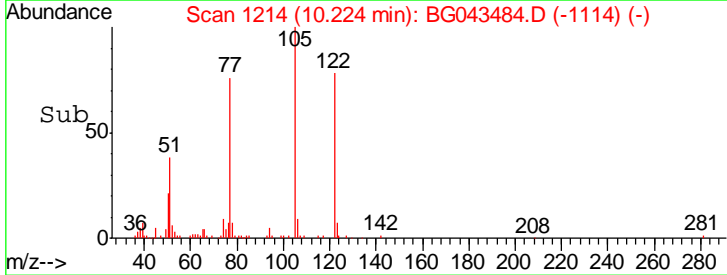
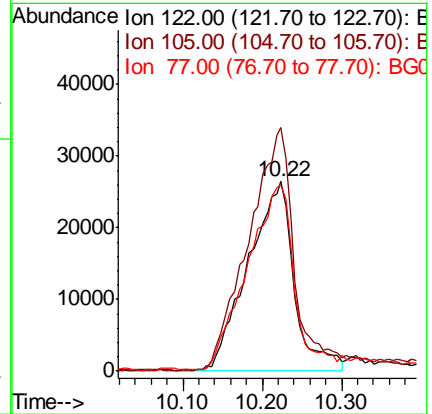
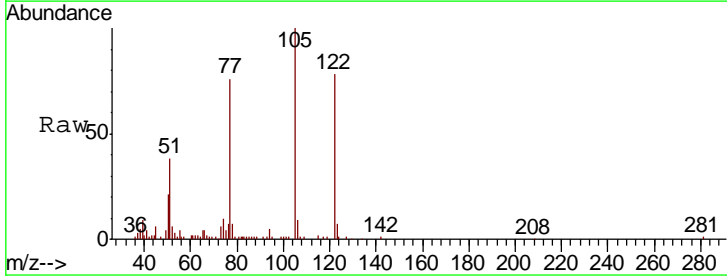
Instrument :
 BNA_G
 ClientSampleId :
 DRUM-COMP

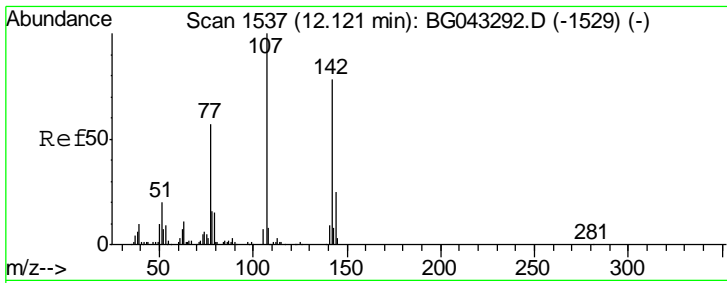
Tgt Ion	Resp	Lower	Upper
122	11341		
107	123.1	104.4	156.6
121	24.7	47.2	70.8#



#32
 Benzoic acid
 Concen: 62.118 ng
 RT: 10.22 min Scan# 1214
 Delta R.T. 0.06 min
 Lab File: BG043484.D
 Acq: 4 Nov 2019 17:12

Tgt Ion	Resp	Lower	Upper
122	106918		
105	128.6	103.3	143.3
77	98.2	84.9	124.9

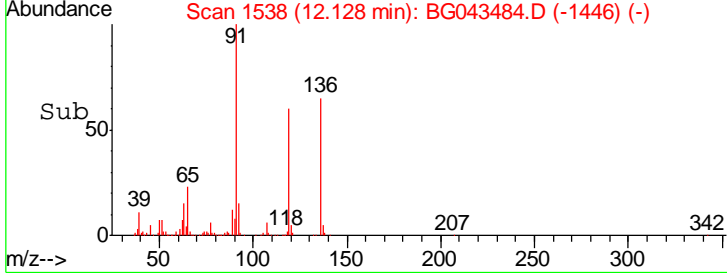
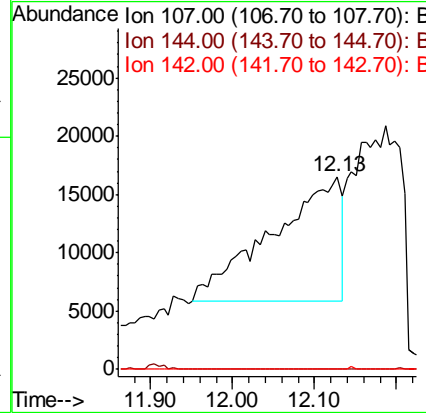
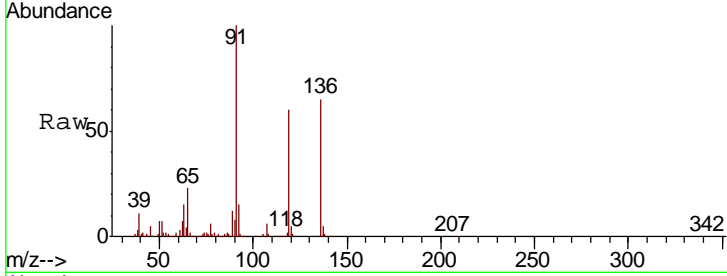




#36
 4-Chloro-3-methylphenol
 Concen: 20.855 ng
 RT: 12.13 min Scan# 1538
 Delta R.T. 0.01 min
 Lab File: BG043484.D
 Acq: 4 Nov 2019 17:12

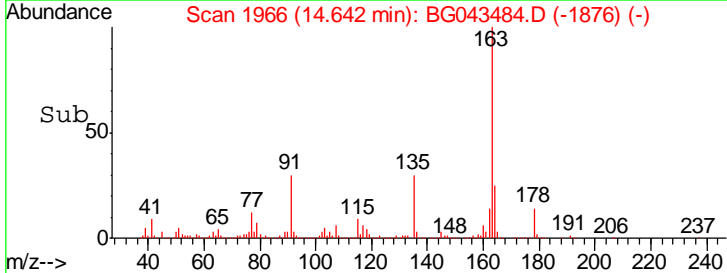
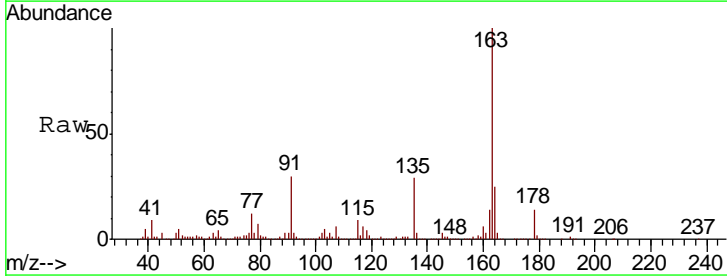
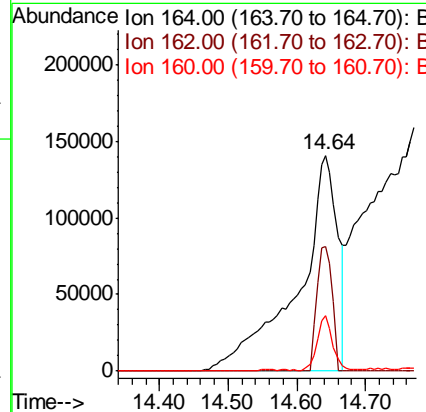
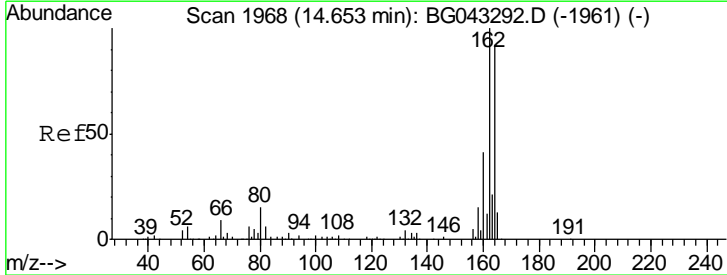
Instrument :
 BNA_G
 ClientSampled :
 DRUM-COMP

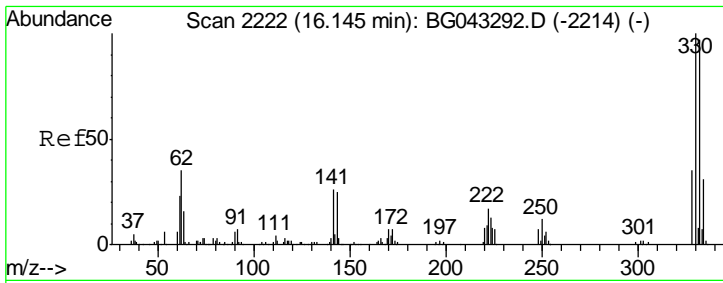
Tgt Ion	Resp	Lower	Upper
107	100		
144	0.0	20.9	31.3#
142	0.0	59.6	89.4#



#39
 Acenaphthene-d10
 Concen: 20.000 ng
 RT: 14.64 min Scan# 1966
 Delta R.T. 0.00 min
 Lab File: BG043484.D
 Acq: 4 Nov 2019 17:12

Tgt Ion	Resp	Lower	Upper
164	100		
162	57.4	83.5	125.3#
160	25.5	36.5	54.7#

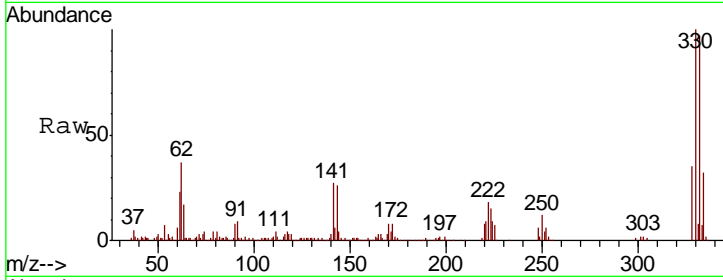




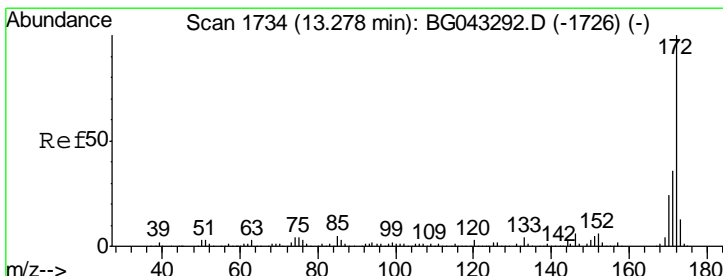
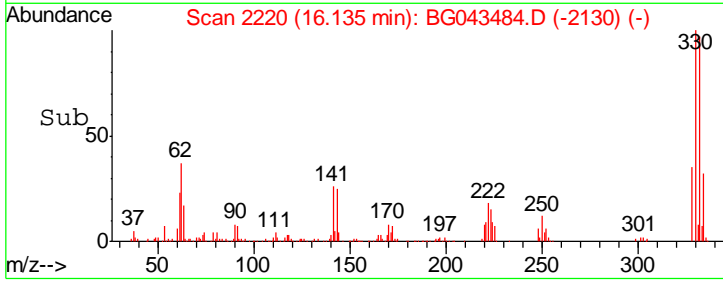
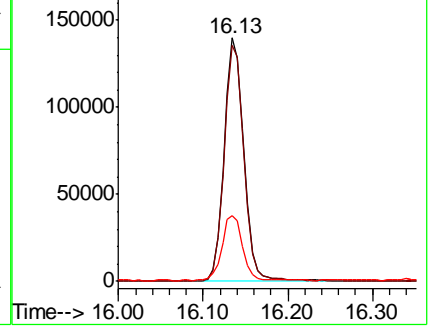
#42
 2,4,6-Tribromophenol
 Concen: 21.133 ng
 RT: 16.13 min Scan# 2220
 Delta R.T. 0.00 min
 Lab File: BG043484.D
 Acq: 4 Nov 2019 17:12

Instrument :
 BNA_G
 ClientSampleId :
 DRUM-COMP

Tgt Ion	Resp	Lower	Upper
330	100		
332	97.5	77.4	116.0
141	27.6	22.8	34.2

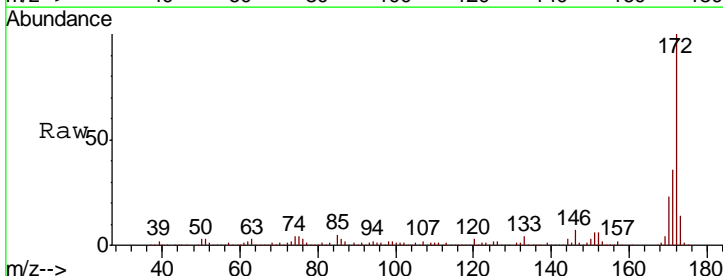


Abundance Ion 329.80 (329.50 to 330.50): E
 Ion 331.80 (331.50 to 332.50): E
 Ion 141.00 (140.70 to 141.70): E

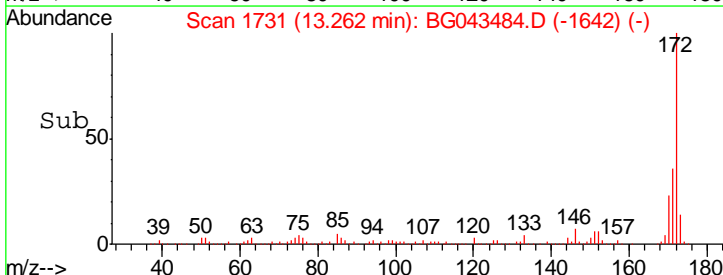
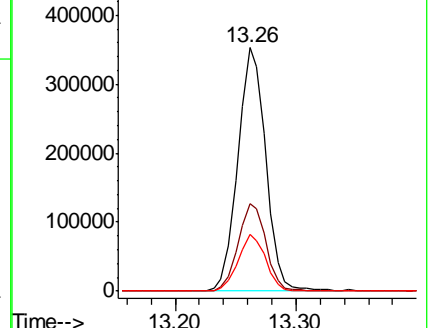


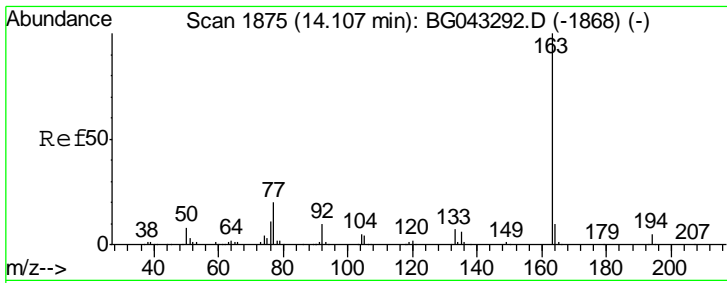
#45
 2-Fluorobiphenyl
 Concen: 13.862 ng
 RT: 13.26 min Scan# 1731
 Delta R.T. -0.00 min
 Lab File: BG043484.D
 Acq: 4 Nov 2019 17:12

Tgt Ion	Resp	Lower	Upper
172	100		
171	36.0	28.9	43.3
170	23.1	18.5	27.7



Abundance Ion 172.00 (171.70 to 172.70): E
 Ion 171.00 (170.70 to 171.70): E
 Ion 170.00 (169.70 to 170.70): E

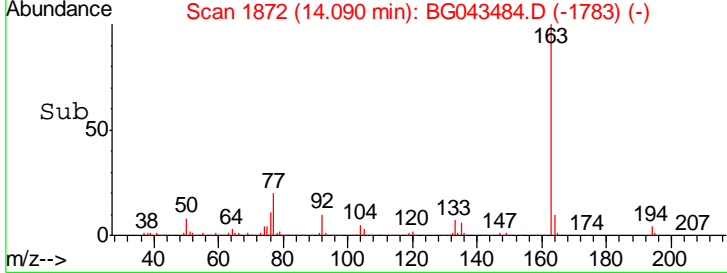
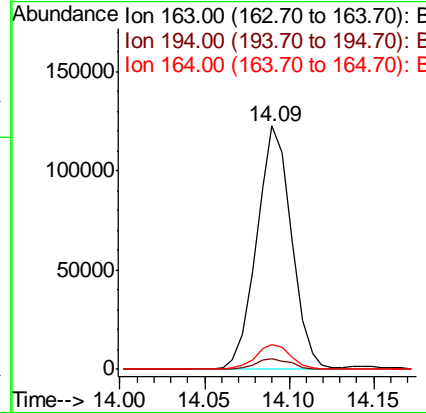
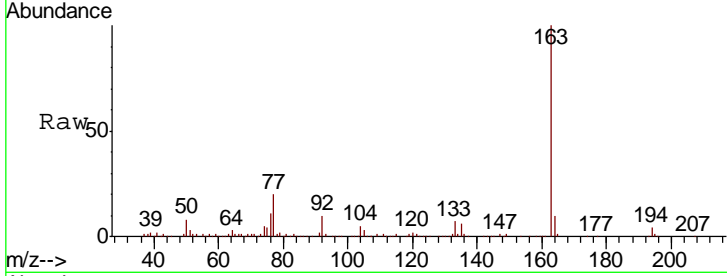




#50
 Dimethylphthalate
 Concen: 3.979 ng
 RT: 14.09 min Scan# 1872
 Delta R.T. -0.00 min
 Lab File: BG043484.D
 Acq: 4 Nov 2019 17:12

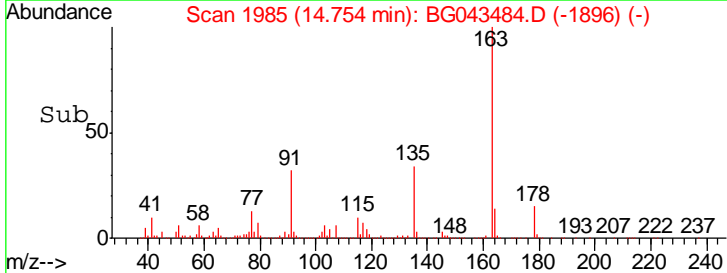
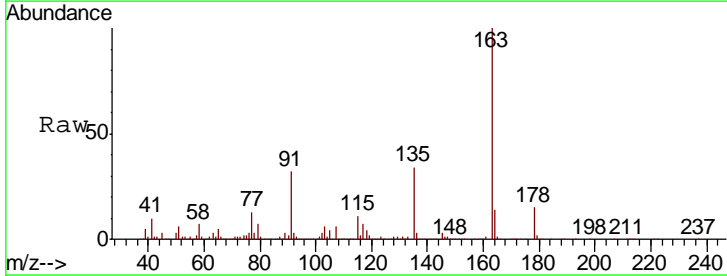
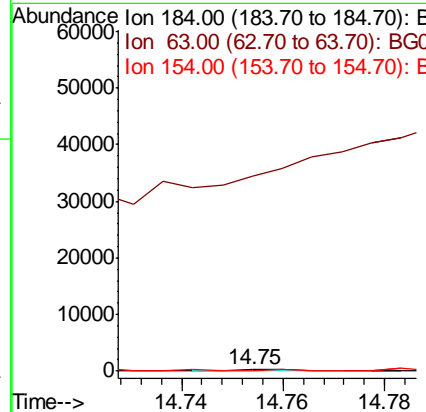
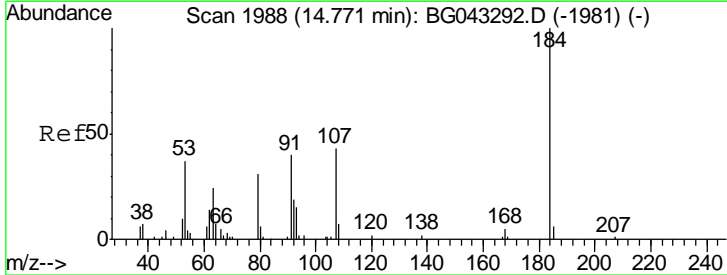
Instrument :
 BNA_G
ClientSampled :
 DRUM-COMP

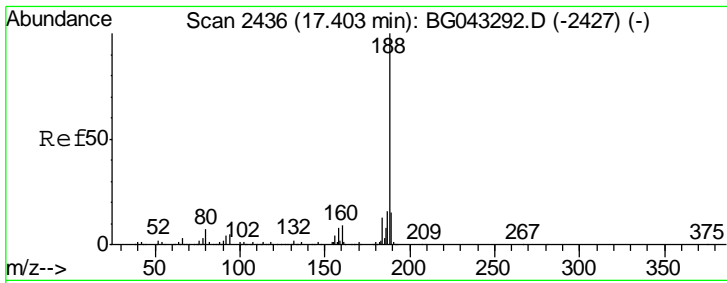
Tgt Ion	Resp	Lower	Upper
163	175055		
194	4.5	3.8	5.6
164	10.1	8.9	13.3



#54
 2,4-Dinitrophenol
 Concen: 7.304 ng
 RT: 14.75 min Scan# 1985
 Delta R.T. -0.00 min
 Lab File: BG043484.D
 Acq: 4 Nov 2019 17:12

Tgt Ion	Resp	Lower	Upper
184	138		
184	100		
63	17575.5	51.3	76.9#
154	0.0	55.4	83.0#

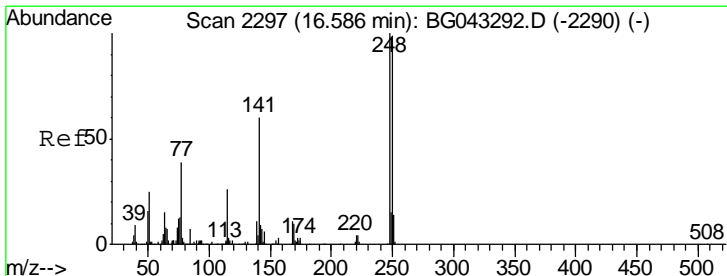
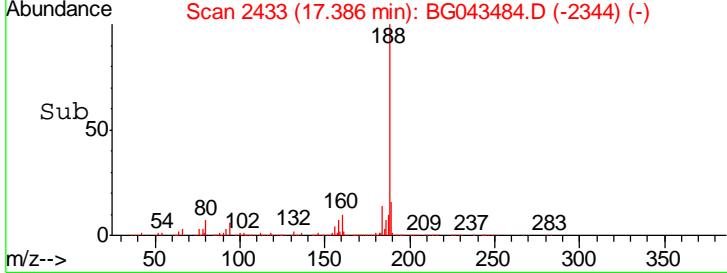
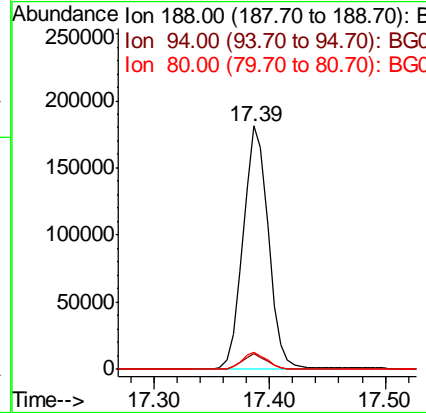
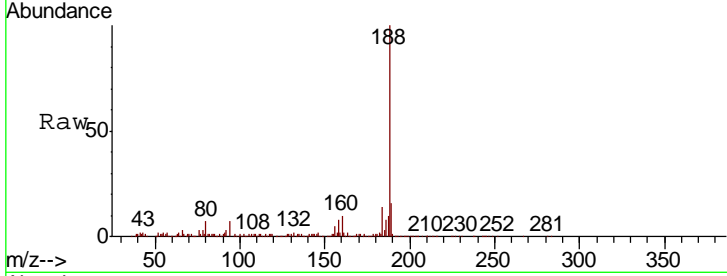




#64
 Phenanthrene-d10
 Concen: 20.000 ng
 RT: 17.39 min Scan# 2433
 Delta R.T. -0.00 min
 Lab File: BG043484.D
 Acq: 4 Nov 2019 17:12

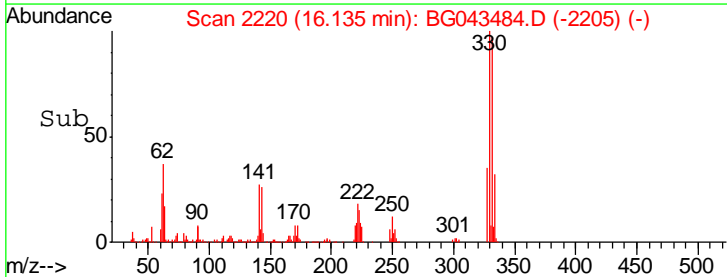
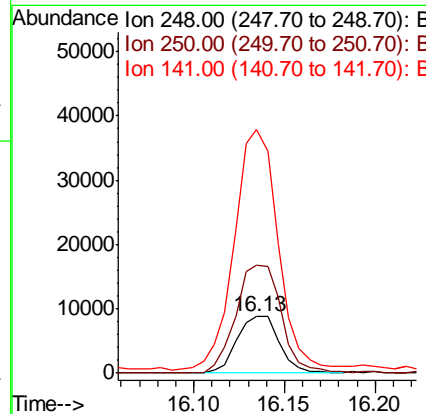
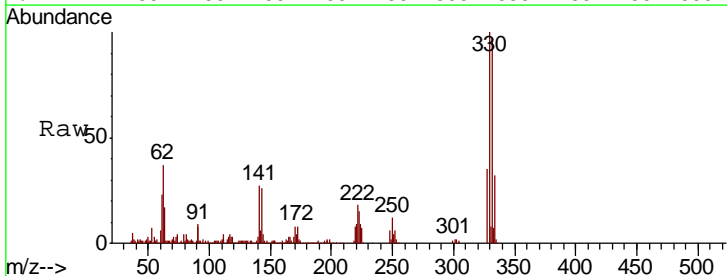
Instrument :
 BNA_G
 ClientSampled :
 DRUM-COMP

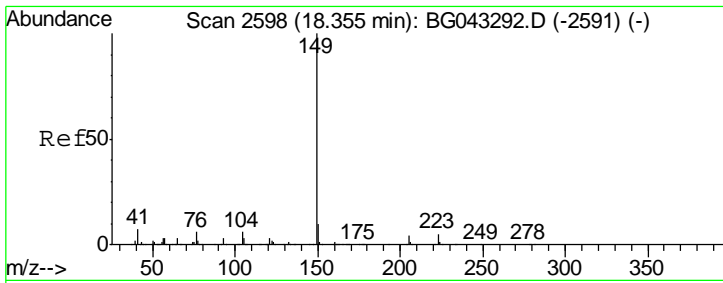
Tgt Ion	Resp	Lower	Upper
188	100		
94	6.6	4.2	6.4#
80	6.8	4.5	6.7#



#67
 4-Bromophenyl-phenylether
 Concen: 3.888 ng
 RT: 16.13 min Scan# 2220
 Delta R.T. -0.44 min
 Lab File: BG043484.D
 Acq: 4 Nov 2019 17:12

Tgt Ion	Resp	Lower	Upper
248	100		
250	192.1	77.0	115.4#
141	430.9	47.5	71.3#

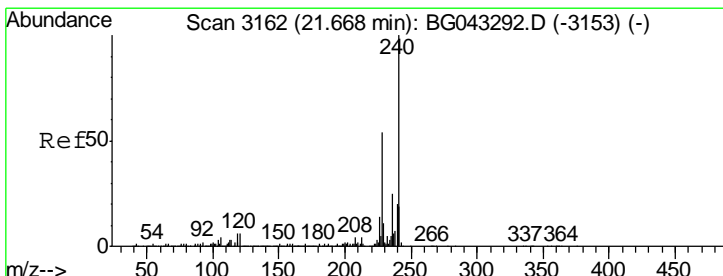
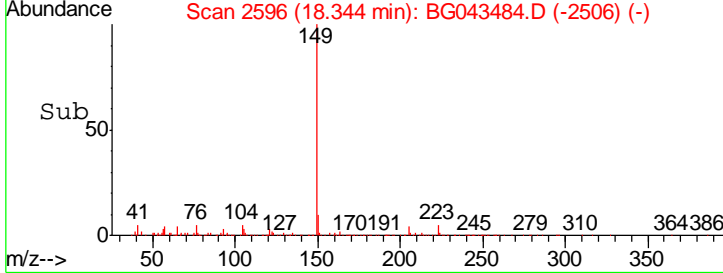
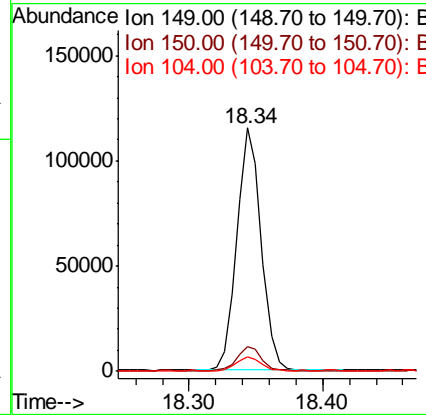
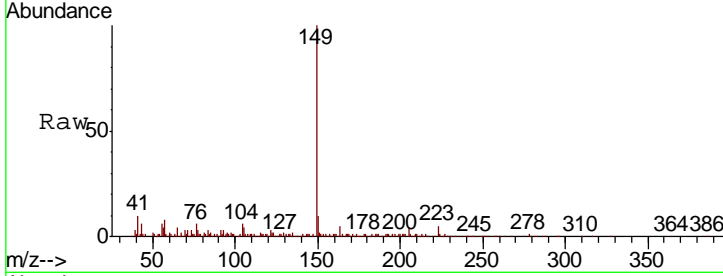




#74
 Di-n-butylphthalate
 Concen: 9.417 ng
 RT: 18.34 min Scan# 2596
 Delta R.T. 0.00 min
 Lab File: BG043484.D
 Acq: 4 Nov 2019 17:12

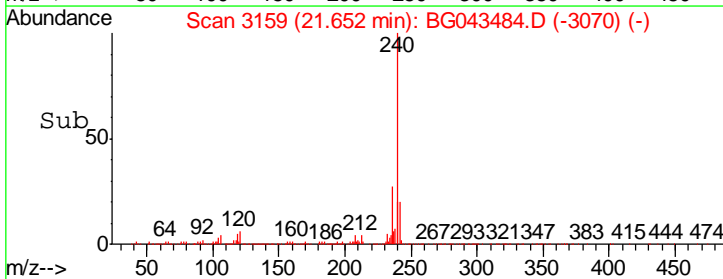
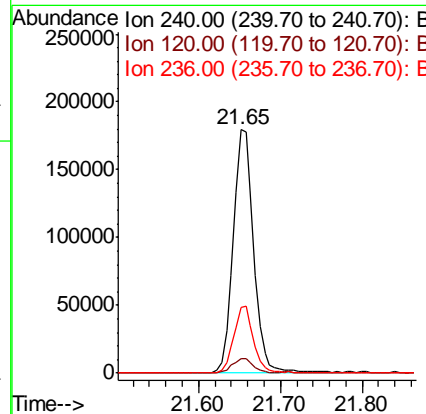
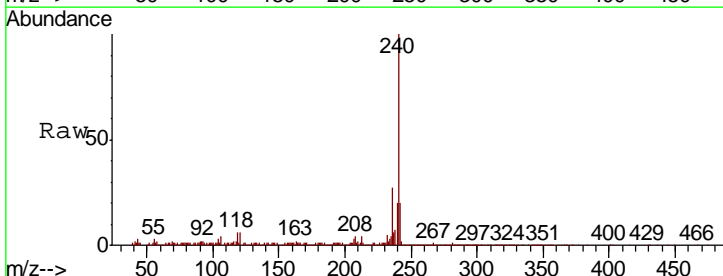
Instrument :
 BNA_G
 ClientSampleId :
 DRUM-COMP

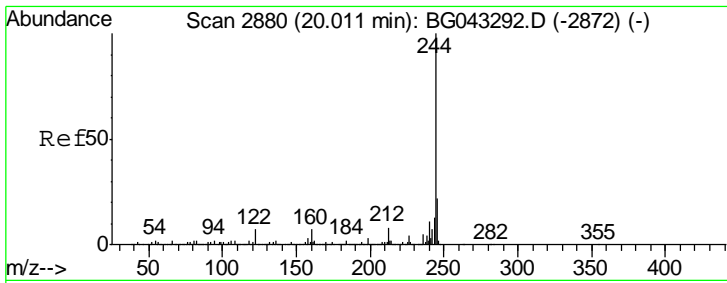
Tgt Ion	Resp	Lower	Upper
149	145518		
150	10.0	8.0	12.0
104	5.9	4.4	6.6



#76
 Chrysene-d12
 Concen: 20.000 ng
 RT: 21.65 min Scan# 3159
 Delta R.T. -0.00 min
 Lab File: BG043484.D
 Acq: 4 Nov 2019 17:12

Tgt Ion	Resp	Lower	Upper
240	312638		
120	5.8	4.6	6.8
236	26.9	19.8	29.8



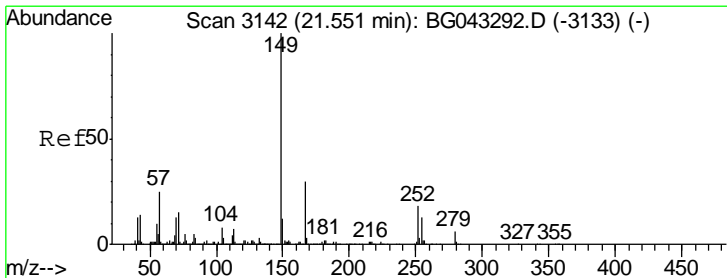
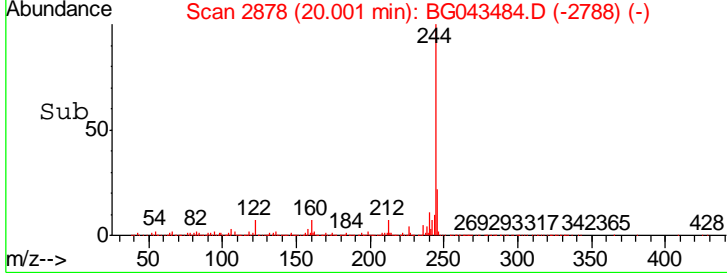
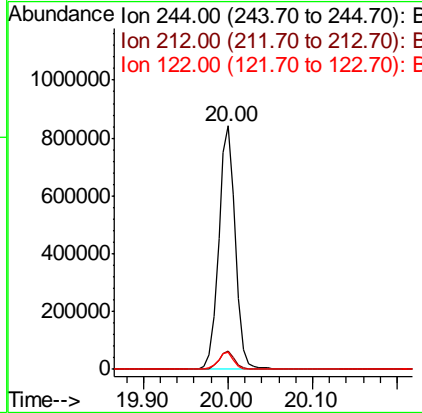
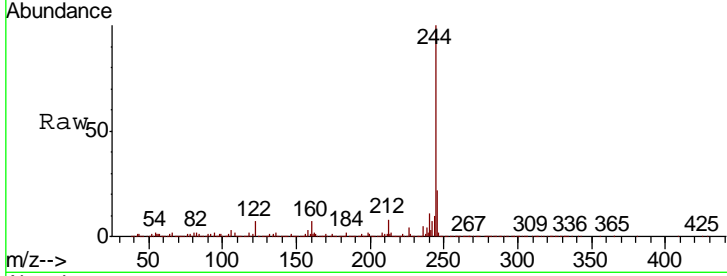


#79
 Terphenyl-d14
 Concen: 69.300 ng
 RT: 20.00 min Scan# 2878
 Delta R.T. 0.00 min
 Lab File: BG043484.D
 Acq: 4 Nov 2019 17:12

Instrument :
 BNA_G
 ClientSampleID :
 DRUM-COMP

Tgt Ion: 244 Resp: 1154852

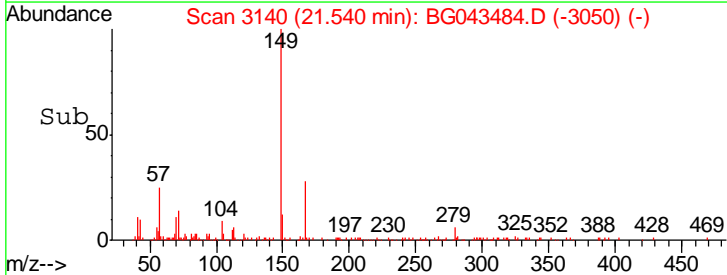
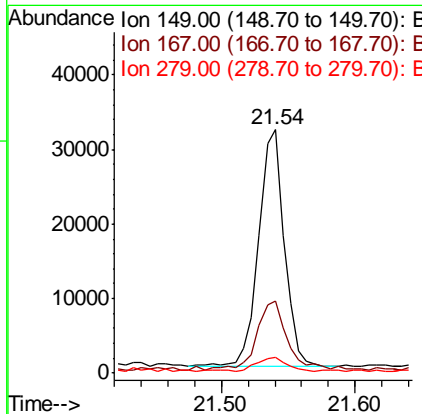
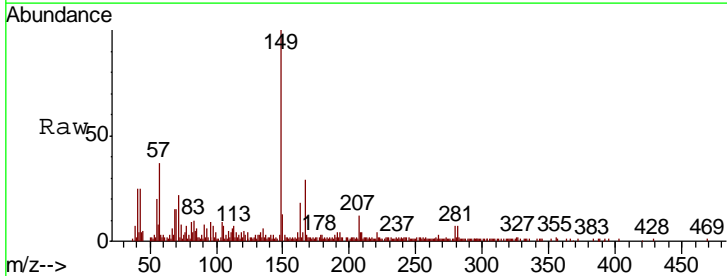
Ion	Ratio	Lower	Upper
244	100		
212	7.6	5.8	8.6
122	6.8	5.4	8.2

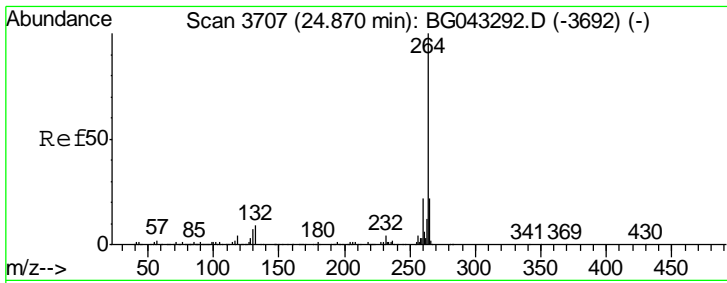


#84
 Bis(2-ethylhexyl)phthalate
 Concen: 4.068 ng
 RT: 21.54 min Scan# 3140
 Delta R.T. 0.00 min
 Lab File: BG043484.D
 Acq: 4 Nov 2019 17:12

Tgt Ion: 149 Resp: 42370

Ion	Ratio	Lower	Upper
149	100		
167	29.4	24.0	36.0
279	6.7	5.4	8.2





#87
 Perylene-d12
 Concen: 20.000 ng
 RT: 24.85 min Scan# 3703
 Delta R.T. -0.00 min
 Lab File: BG043484.D
 Acq: 4 Nov 2019 17:12

Instrument :
 BNA_G
 ClientSampleId :
 DRUM-COMP

Tot Ion: 264 Resp: 372691

Ion	Ratio	Lower	Upper
264	100		
260	22.9	17.5	26.3
265	23.4	17.4	26.0

