

Data Path : Z:\svoasrv\HPCHEM1\BNA\_G\Data\BG110423\  
 Data File : BG059661.D  
 Acq On : 5 Nov 2023 19:04  
 Operator : MA/JU  
 Sample : 05013-18  
 Misc :  
 ALS Vial : 52 Sample Multiplier: 1

Instrument :  
 BNA\_G  
 ClientSampleId :  
 A4915

Integration Parameters: LSCINT.P

Integrator: RTE  
 Smoothing : OFF  
 Sampling : 1  
 Start Thrs : 0.2  
 Stop Thrs : 0

Filtering: 5  
 Min Area: 0.1 % of largest Peak  
 Max Peaks: 100  
 Peak Location: TOP

If leading or trailing edge < 100 prefer < Baseline drop else tangent >  
 Peak separation: 5

Method : Z:\svoasrv\HPCHEM1\BNA\_G\Methods\SFAM-EPA-BG110323.MA.M  
 Title : SVOA CALIBRATION

Signal : TIC: BG059661.D\data.ms

peak #	R.T. min	first scan	max scan	last scan	PK TY	peak height	corr. area	corr. % max.	% of total
1	3.541	25	26	29	rBV	5275	4262	0.31%	0.048%
2	3.612	35	38	40	rBV	3305	3914	0.28%	0.044%
3	3.941	92	94	99	rBV3	3342	4013	0.29%	0.045%
4	3.994	102	103	106	rBV2	6236	5313	0.38%	0.060%
5	4.082	115	118	123	rBV3	11664	15049	1.08%	0.170%
6	4.387	167	170	172	rBV2	3513	4311	0.31%	0.049%
7	4.622	207	210	213	rBV	6060	6629	0.48%	0.075%
8	4.987	271	272	274	rBV	4659	3771	0.27%	0.043%
9	5.369	336	337	341	rBV	4850	4210	0.30%	0.048%
10	5.521	362	363	366	rBV	4786	3969	0.29%	0.045%
11	5.615	377	379	384	rVB	3760	5796	0.42%	0.066%
12	6.027	447	449	453	rBV	3605	5491	0.40%	0.062%
13	6.127	465	466	469	rBV	3414	3928	0.28%	0.044%
14	6.338	500	502	503	rBV	5531	4329	0.31%	0.049%
15	6.520	531	533	536	rVB	5256	5193	0.37%	0.059%
16	6.661	553	557	561	rBV	11642	20585	1.48%	0.233%
17	7.225	651	653	658	rVB	4660	3876	0.28%	0.044%
18	7.384	678	680	681	rBV	5952	4413	0.32%	0.050%
19	7.454	688	692	701	rVB2	31073	63909	4.60%	0.723%
20	7.666	723	728	734	rVB2	73849	120684	8.68%	1.365%
21	7.860	753	761	768	rBV2	107610	190702	13.72%	2.156%
22	7.942	774	775	778	rBV2	3906	4247	0.31%	0.048%
23	8.054	791	794	796	rBV2	4570	4814	0.35%	0.054%
24	8.236	822	825	827	rBV2	3906	4753	0.34%	0.054%
25	8.353	838	845	853	rVB2	97662	180438	12.98%	2.040%
26	8.947	943	946	951	rVB2	4979	7847	0.56%	0.089%
27	9.029	954	960	967	rVV3	86676	153337	11.03%	1.734%
28	9.282	1001	1003	1006	rVB	4827	5947	0.43%	0.067%
29	9.311	1006	1008	1010	rBV	4009	4319	0.31%	0.049%
30	9.399	1022	1023	1027	rBV	3178	3826	0.28%	0.043%
31	9.546	1041	1048	1054	rBV	137083	243969	17.55%	2.758%
32	9.758	1079	1084	1089	rBV2	8038	12526	0.90%	0.142%
33	10.098	1140	1142	1145	rBV	4171	3739	0.27%	0.042%
34	10.169	1150	1154	1155	rBV	3672	4431	0.32%	0.050%
35	10.269	1164	1171	1179	rVB2	123150	226088	16.27%	2.556%
36	10.709	1244	1246	1250	rVB2	3195	3727	0.27%	0.042%

Data Path : Z:\svoasrv\HPCHEM1\BNA\_G\Data\BG110423\  
 Data File : BG059661.D  
 Acq On : 5 Nov 2023 19:04  
 Operator : MA/JU  
 Sample : 05013-18  
 Misc :  
 ALS Vial : 52 Sample Multiplier: 1

Instrument :  
 BNA\_G  
 ClientSampleId :  
 A4915

Integration Parameters: LSCINT.P

Integrator: RTE  
 Smoothing : OFF Filtering: 5  
 Sampling : 1 Min Area: 0.1 % of largest Peak  
 Start Thrs: 0.2 Max Peaks: 100  
 Stop Thrs : 0 Peak Location: TOP

If leading or trailing edge < 100 prefer < Baseline drop else tangent >  
 Peak separation: 5

Method : Z:\svoasrv\HPCHEM1\BNA\_G\Methods\SFAM-EPA-BG110323.MA.M  
 Title : SVOA CALIBRATION

37	10.792	1254	1260	1266	rBV3	166327	308859	22.22%	3.492%
38	10.903	1277	1279	1283	rBV3	6114	6915	0.50%	0.078%
39	11.197	1323	1329	1335	rVB2	142969	268537	19.32%	3.036%
40	11.338	1347	1353	1361	rVB2	107896	202980	14.60%	2.295%
41	11.761	1422	1425	1427	rVB2	4272	4195	0.30%	0.047%
42	11.837	1435	1438	1439	rBV	3945	4009	0.29%	0.045%
43	11.931	1453	1454	1457	rBV	4198	4767	0.34%	0.054%
44	12.072	1476	1478	1480	rBV	4370	4429	0.32%	0.050%
45	12.149	1490	1491	1496	rVB	4244	4305	0.31%	0.049%
46	12.249	1506	1508	1510	rVB3	5836	4307	0.31%	0.049%
47	12.731	1587	1590	1591	rBV	4710	5391	0.39%	0.061%
48	12.860	1611	1612	1615	rVB	7012	4748	0.34%	0.054%
49	12.895	1615	1618	1620	rBV	4935	5425	0.39%	0.061%
50	12.960	1627	1629	1632	rVB	4673	3896	0.28%	0.044%
51	13.371	1693	1699	1705	rBV	5634	11624	0.84%	0.131%
52	13.488	1717	1719	1720	rBV	5547	4258	0.31%	0.048%
53	13.735	1758	1761	1763	rBV3	5188	6197	0.45%	0.070%
54	13.800	1770	1772	1777	rBV4	8886	11652	0.84%	0.132%
55	13.935	1794	1795	1797	rBV4	4299	3775	0.27%	0.043%
56	14.370	1863	1869	1876	rBV	428236	599699	43.15%	6.781%
57	14.564	1900	1902	1905	rBV	4257	4903	0.35%	0.055%
58	14.681	1915	1922	1932	rBV	403805	632081	45.48%	7.147%
59	14.852	1948	1951	1954	rBV	6220	7383	0.53%	0.083%
60	14.981	1966	1973	1979	rVV	243109	378163	27.21%	4.276%
61	15.045	1982	1984	1986	rBV	4800	3684	0.27%	0.042%
62	15.145	1996	2001	2008	rVB3	46932	78693	5.66%	0.890%
63	15.404	2044	2045	2050	rVB3	4892	3983	0.29%	0.045%
64	15.686	2091	2093	2096	rVB3	5948	6159	0.44%	0.070%
65	15.715	2096	2098	2101	rBV3	3820	4481	0.32%	0.051%
66	15.968	2135	2141	2147	rVB	503721	791689	56.96%	8.951%
67	16.068	2153	2158	2163	rVB2	197095	281557	20.26%	3.183%
68	16.191	2177	2179	2180	rBV	5684	4119	0.30%	0.047%
69	16.279	2191	2194	2196	rBV	3705	3914	0.28%	0.044%
70	16.984	2312	2314	2316	rBV	7263	5161	0.37%	0.058%
71	17.026	2319	2321	2322	rVV2	7649	6240	0.45%	0.071%
72	17.043	2322	2324	2328	rVB3	10216	10552	0.76%	0.119%
73	17.208	2348	2352	2355	rBV2	6542	7856	0.57%	0.089%
74	17.431	2388	2390	2392	rVB2	6099	4238	0.30%	0.048%
75	17.731	2435	2441	2447	rBV	337833	498118	35.84%	5.632%
76	17.830	2452	2458	2468	rVB	608759	942980	67.85%	10.662%

Data Path : Z:\svoasrv\HPCHEM1\BNA\_G\Data\BG110423\  
Data File : BG059661.D  
Acq On : 5 Nov 2023 19:04  
Operator : MA/JU  
Sample : 05013-18  
Misc :  
ALS Vial : 52 Sample Multiplier: 1

Instrument :  
BNA\_G  
ClientSampleId :  
A4915

Integration Parameters: LSCINT.P

Integrator: RTE  
Smoothing : OFF Filtering: 5  
Sampling : 1 Min Area: 0.1 % of largest Peak  
Start Thrs: 0.2 Max Peaks: 100  
Stop Thrs : 0 Peak Location: TOP

If leading or trailing edge < 100 prefer < Baseline drop else tangent >  
Peak separation: 5

Method : Z:\svoasrv\HPCHEM1\BNA\_G\Methods\SFAM-EPA-BG110323.MA.M  
Title : SVOA CALIBRATION

77	18.547	2576	2580	2587	rBV2	119754	164976	11.87%	1.865%
78	18.729	2609	2611	2612	rBV	7226	4313	0.31%	0.049%
79	19.669	2767	2771	2772	rBV4	18362	17283	1.24%	0.195%
80	19.805	2791	2794	2800	rVB4	67102	85627	6.16%	0.968%
81	20.104	2839	2845	2851	rVB	941678	1389856	100.00%	15.715%
82	22.061	3173	3178	3185	rVB	388896	688008	49.50%	7.779%

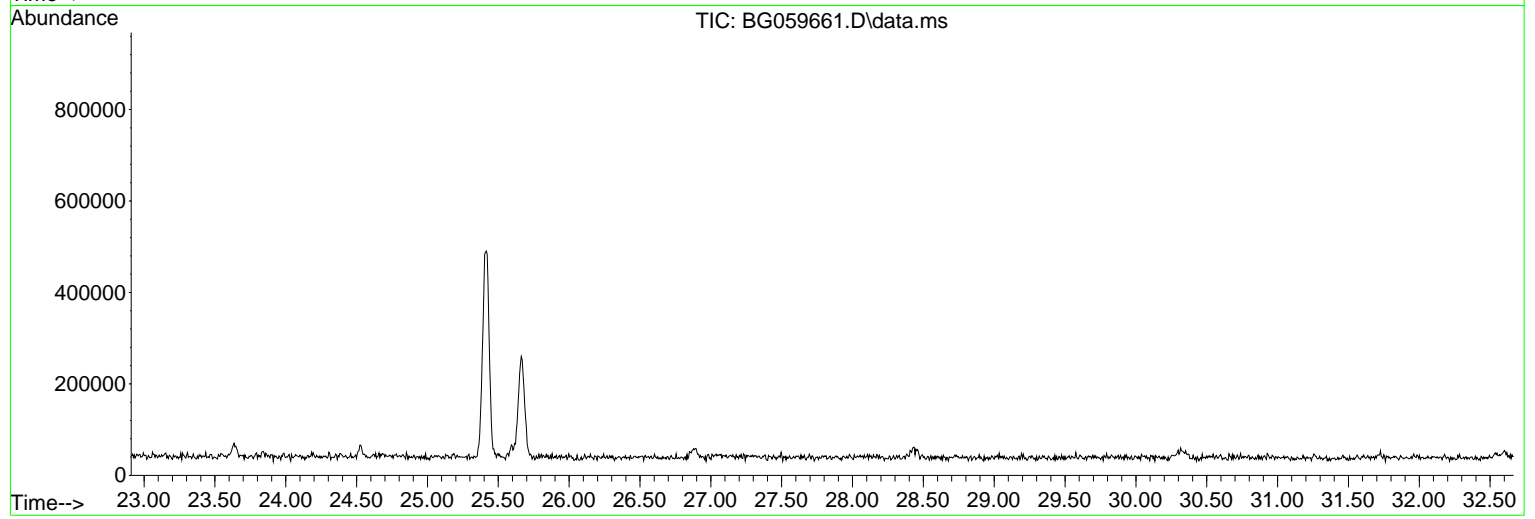
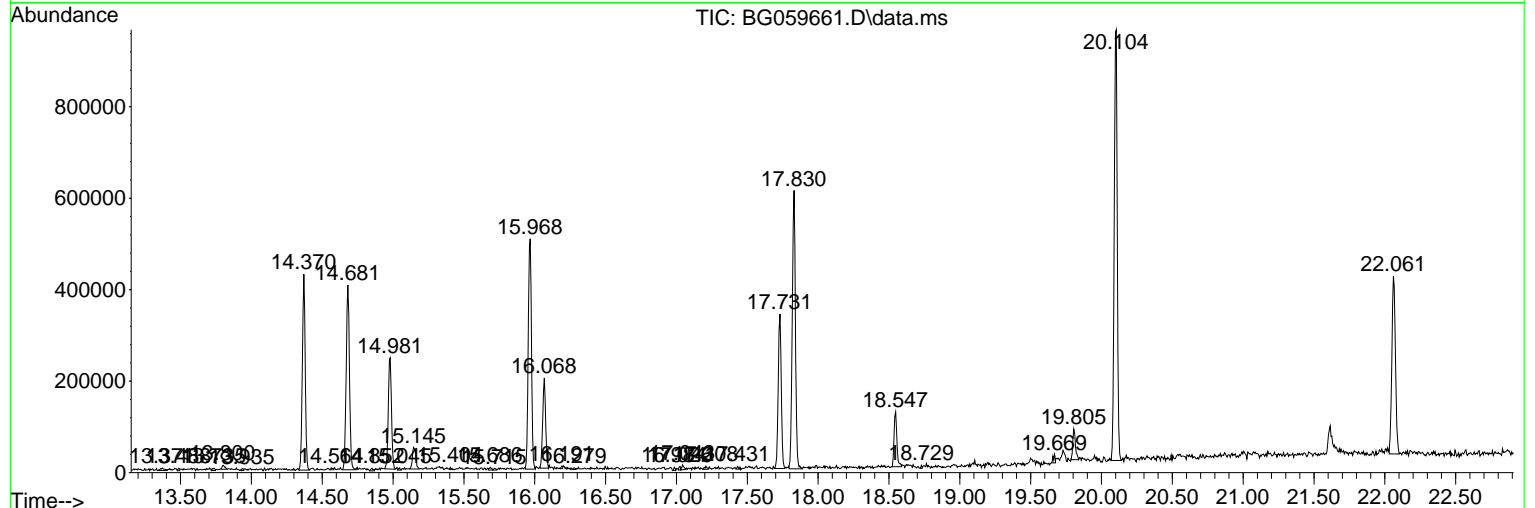
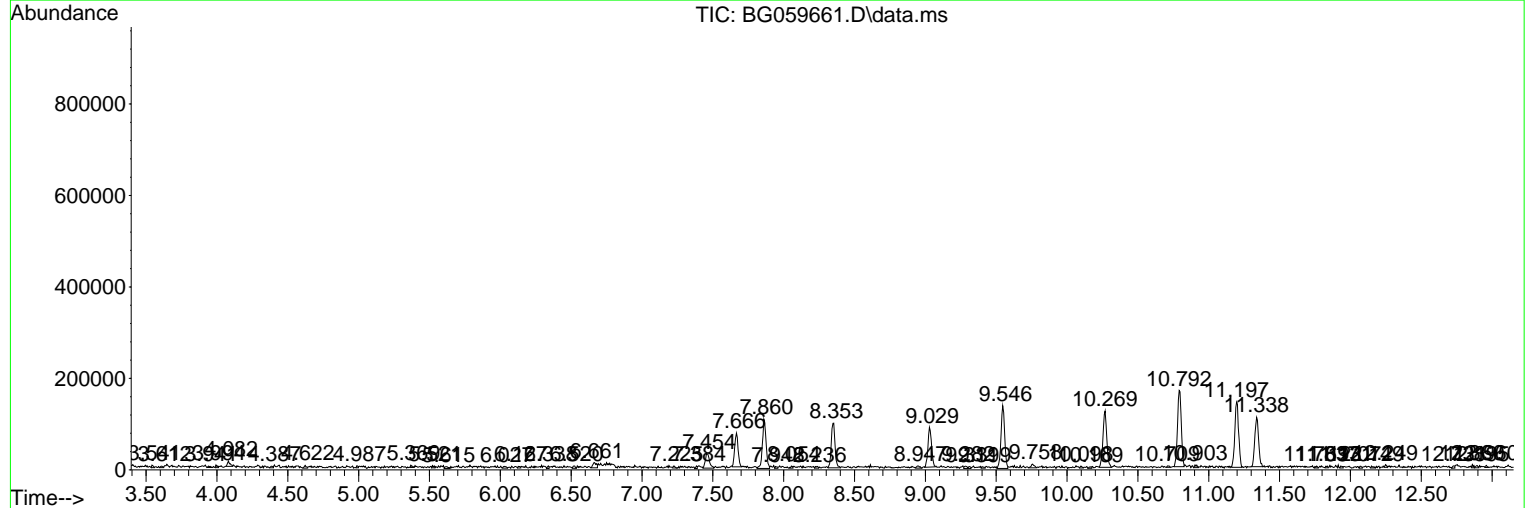
Sum of corrected areas: 8844340

Data Path : Z:\svoasrv\HPCHEM1\BNA\_G\Data\BG110423\  
 Data File : BG059661.D  
 Acq On : 5 Nov 2023 19:04  
 Operator : MA/JU  
 Sample : 05013-18  
 Misc :  
 ALS Vial : 52 Sample Multiplier: 1

**Instrument :**  
 BNA\_G  
**ClientSampleId :**  
 A4915

Quant Method : Z:\svoasrv\HPCHEM1\BNA\_G\Methods\SFAM-EPA-BG110323.MA.M  
 Quant Title : SVOA CALIBRATION

TIC Library : C:\DATABASE\NIST20.L  
 TIC Integration Parameters: LSCINT.P



Data Path : Z:\svoasrv\HPCHEM1\BNA\_G\Data\BG110423\  
 Data File : BG059661.D  
 Acq On : 5 Nov 2023 19:04  
 Operator : MA/JU  
 Sample : 05013-18  
 Misc :  
 ALS Vial : 52 Sample Multiplier: 1

Instrument :  
 BNA\_G  
 ClientSampleId :  
 A4915

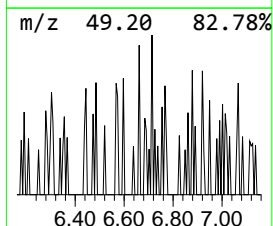
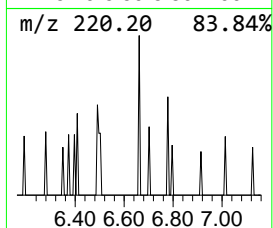
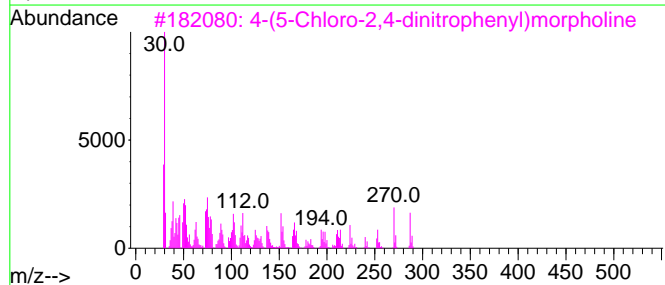
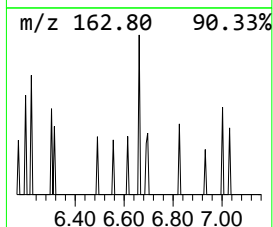
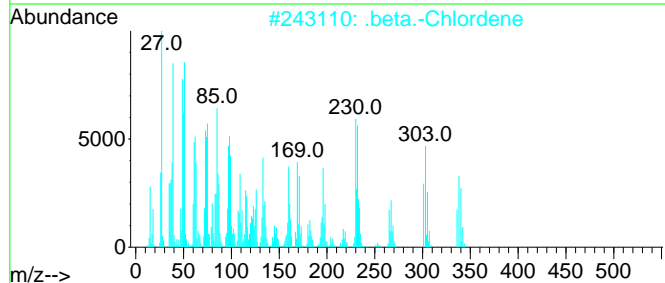
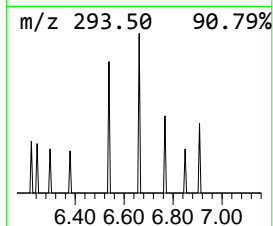
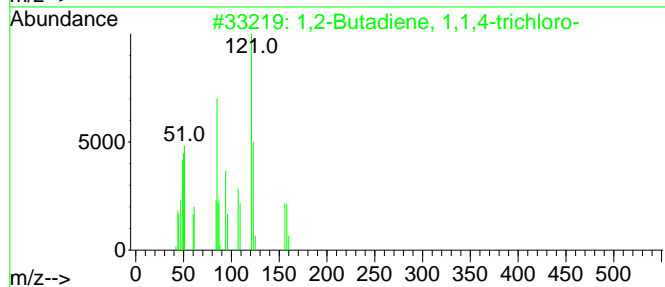
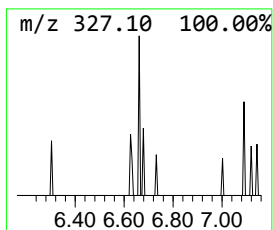
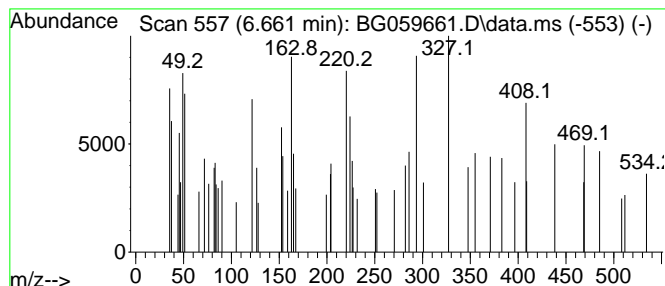
Quant Method : Z:\svoasrv\HPCHEM1\BNA\_G\Methods\SFAM-EPA-BG110323.MA.M  
 Quant Title : SVOA CALIBRATION

TIC Library : C:\DATABASE\NIST20.L  
 TIC Integration Parameters: LSCINT.P

\*\*\*\*\*  
 Peak Number 1 unknown-01 Concentration Rank 3

R.T.	EstConc	Area	Relative to ISTD	R.T.
6.661	2.28 ng/ul	20585	1,4-Dichlorobenzene-d4	8.347

Hit#	of	5	Tentative ID	MW	MolForm	CAS#	Qual
1			1,2-Butadiene, 1,1,4-trichloro-	156	C4H3Cl3	058679-08-6	23
2			.beta.-Chlordene	336	C10H6Cl6	056534-03-3	12
3			4-(5-Chloro-2,4-dinitrophenyl)mo...	287	C10H10ClN3O5	1000444-49-3	10
4			3-endo,5-endo-dichloro-7,7-bis-c...	340	C10H10Cl6	1000365-99-8	10
5			4H-Thiazolo[4,5-E]benz[b]1,4-dia...	251	C10H6ClN3OS	313534-18-8	10



Data Path : Z:\svoasrv\HPCHEM1\BNA\_G\Data\BG110423\  
 Data File : BG059661.D  
 Acq On : 5 Nov 2023 19:04  
 Operator : MA/JU  
 Sample : 05013-18  
 Misc :  
 ALS Vial : 52 Sample Multiplier: 1

Instrument :  
 BNA\_G  
 ClientSampleId :  
 A4915

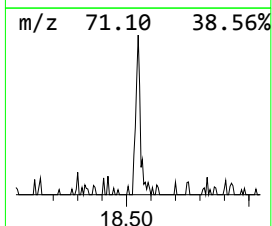
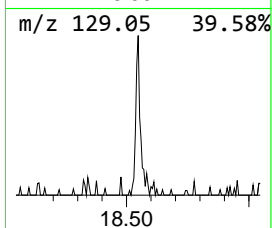
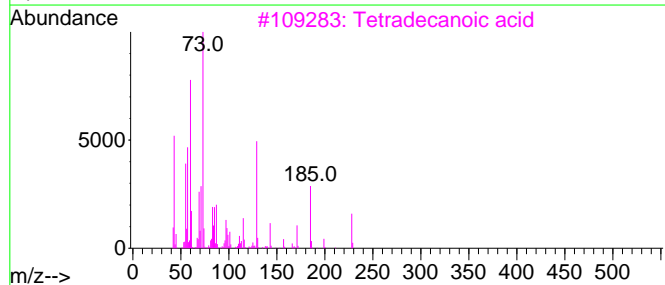
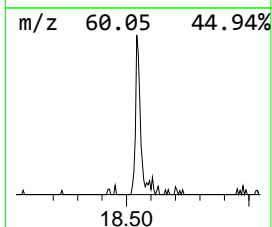
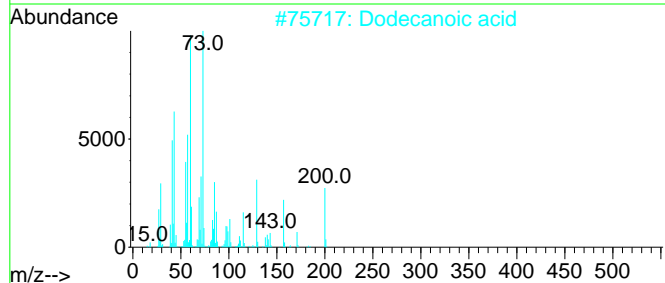
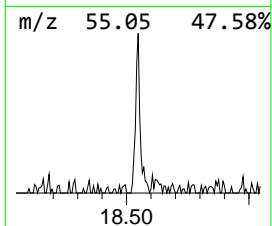
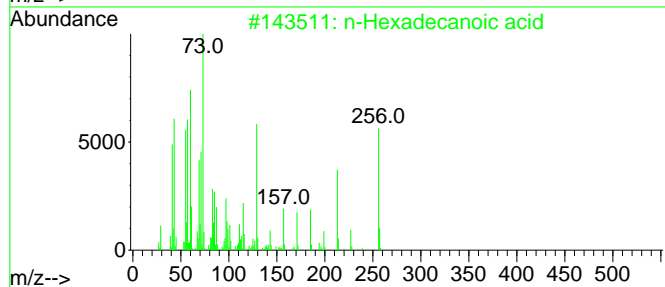
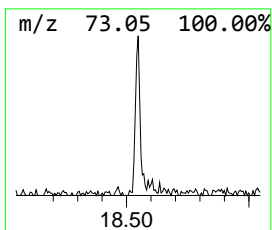
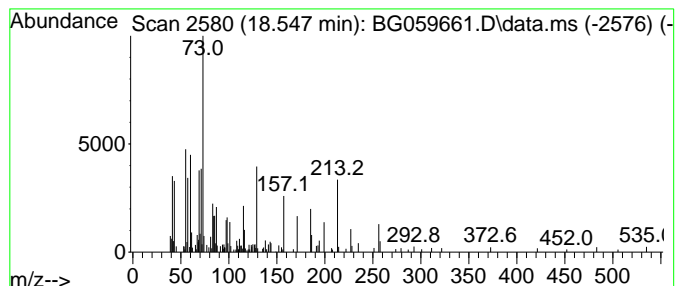
Quant Method : Z:\svoasrv\HPCHEM1\BNA\_G\Methods\SFAM-EPA-BG110323.MA.M  
 Quant Title : SVOA CALIBRATION

TIC Library : C:\DATABASE\NIST20.L  
 TIC Integration Parameters: LSCINT.P

\*\*\*\*\*  
 Peak Number 2 n-Hexadecanoic acid Concentration Rank 1

R.T.	EstConc	Area	Relative to ISTD	R.T.
18.547	6.62 ng/ul	164976	Phenanthrene-d10	17.731

Hit#	of	5	Tentative ID	MW	MolForm	CAS#	Qual
1			n-Hexadecanoic acid	256	C16H32O2	000057-10-3	58
2			Dodecanoic acid	200	C12H24O2	000143-07-7	47
3			Tetradecanoic acid	228	C14H28O2	000544-63-8	43
4			n-Decanoic acid	172	C10H20O2	000334-48-5	38
5			Tetradecanoic acid	228	C14H28O2	000544-63-8	37



Data Path : Z:\svoasrv\HPCHEM1\BNA\_G\Data\BG110423\  
 Data File : BG059661.D  
 Acq On : 5 Nov 2023 19:04  
 Operator : MA/JU  
 Sample : 05013-18  
 Misc :  
 ALS Vial : 52 Sample Multiplier: 1

Instrument :  
 BNA\_G  
 ClientSampleId :  
 A4915

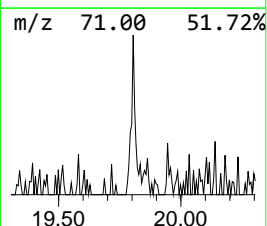
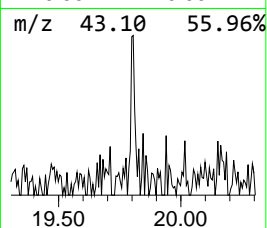
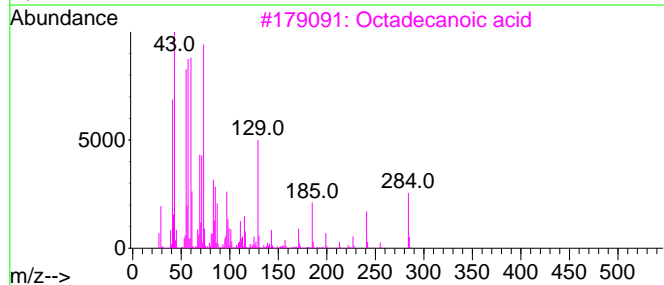
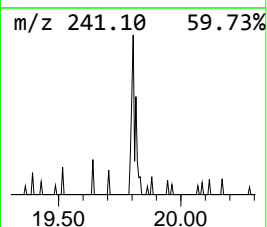
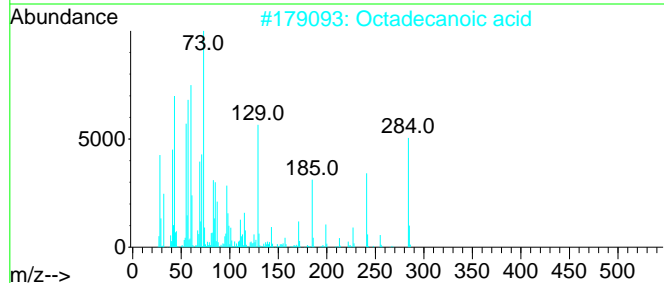
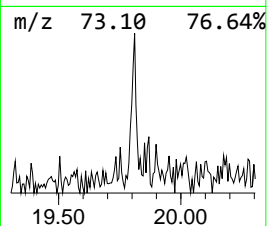
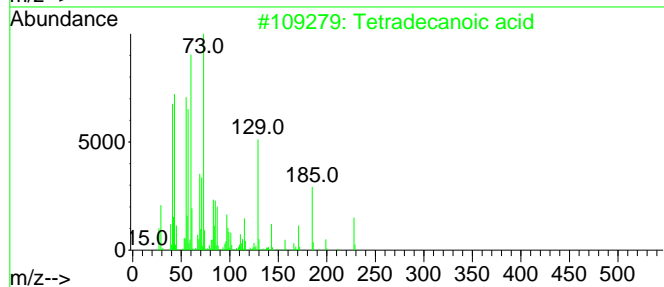
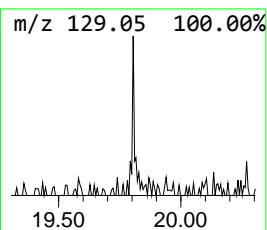
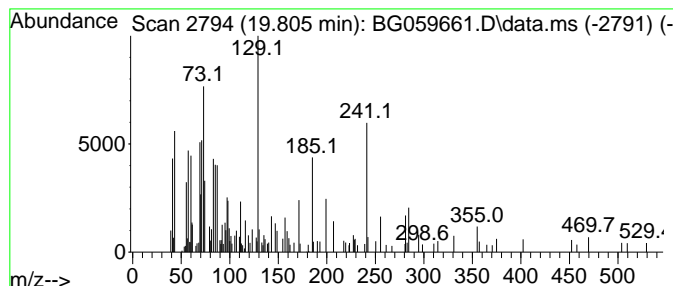
Quant Method : Z:\svoasrv\HPCHEM1\BNA\_G\Methods\SFAM-EPA-BG110323.MA.M  
 Quant Title : SVOA CALIBRATION

TIC Library : C:\DATABASE\NIST20.L  
 TIC Integration Parameters: LSCINT.P

\*\*\*\*\*  
 Peak Number 3 Tetradecanoic acid Concentration Rank 2

R.T.	EstConc	Area	Relative to ISTD	R.T.
19.805	3.44 ng/ul	85627	Phenanthrene-d10	17.731

Hit#	of	5	Tentative ID	MW	MolForm	CAS#	Qual
1			Tetradecanoic acid	228	C14H28O2	000544-63-8	60
2			Octadecanoic acid	284	C18H36O2	000057-11-4	59
3			Octadecanoic acid	284	C18H36O2	000057-11-4	53
4			Pentadecanoic acid	242	C15H30O2	001002-84-2	53
5			Tetradecanoic acid	228	C14H28O2	000544-63-8	49



Data Path : Z:\svoasrv\HPCHEM1\BNA\_G\Data\BG110423\  
Data File : BG059661.D  
Acq On : 5 Nov 2023 19:04  
Operator : MA/JU  
Sample : 05013-18  
Misc :  
ALS Vial : 52 Sample Multiplier: 1

Instrument :  
BNA\_G  
ClientSampleId :  
A4915

Quant Method : Z:\svoasrv\HPCHEM1\BNA\_G\Methods\SFAM-EPA-BG110323.MA.M  
Quant Title : SVOA CALIBRATION

TIC Library : C:\DATABASE\NIST20.L  
TIC Integration Parameters: LSCINT.P

TIC Top Hit name	RT	EstConc	Units	Response	--Internal Standard--			
					#	RT	Resp	Conc
unknown-01	6.661	2.3	ng/u1	20585	1	8.347	180438	20.0
n-Hexadecanoic ...	18.547	6.6	ng/u1	164976	4	17.731	498118	20.0
Tetradecanoic acid	19.805	3.4	ng/u1	85627	4	17.731	498118	20.0