

Data Path : \\74.0.250.170\SVOASRV\HPCHEM1\BNA G\DATA\BG110517\
 Data File : BG030741.D
 Acq On : 5 Nov 2017 16:51
 Operator : SJ/JU
 Sample : I6107-12
 Misc :
 ALS Vial : 9 Sample Multiplier: 1

Instrument :
 BNA_G
 ClientSampleId :
 B0EA5

Quant Time: Nov 06 00:54:08 2017
 Quant Method : Z:\HPCHEM1\BNA G\METHODS\SOM-EPA-BG101417.M
 Quant Title : SVOA CALIBRATION
 QLast Update : Mon Nov 06 00:53:03 2017
 Response via : Initial Calibration

Internal Standards	R.T.	QIon	Response	Conc	Units	Dev(Min)
1) 1,4-Dichlorobenzene-d4	8.15	152	67547	20.00	ng/ul	0.00
18) Naphthalene-d8	10.97	136	296773	20.00	ng/ul	0.00
35) Acenaphthene-d10	14.77	164	196713	20.00	ng/ul	0.00
61) Phenanthrene-d10	17.51	188	517875	20.00	ng/ul	0.00
75) Chrysene-d12	21.78	240	679168	20.00	ng/ul	-0.01
83) Perylene-d12	25.08	264	678517	20.00	ng/ul	-0.03

System Monitoring Compounds

3) 1,4-Dioxane-d8	3.53	96	6820	4.10	ng/uL	0.00
5) Phenol-d5	7.31	99	107603	16.60	ng/ul	0.00
7) Bis-(2-Chloroethyl)ether-d	7.47	67	66842	16.48	ng/ul	0.00
9) 2-Chlorophenol-d4	7.68	132	89122	19.49	ng/ul	0.00
13) 4-Methylphenol-d8	8.86	113	91524	17.48	ng/ul	0.00
19) Nitrobenzene-d5	9.32	128	43494	20.42	ng/ul	0.00
22) 2-Nitrophenol-d4	10.04	143	50120	22.96	ng/ul	0.00
26) 2,4-Dichlorophenol-d3	10.59	165	91313	18.36	ng/ul	0.00
29) 4-Chloroaniline-d4	11.10	131	106551	18.44	ng/ul	0.00
43) Dimethylphthalate-d6	14.16	166	384324	22.85	ng/ul	0.00
46) Acenaphthylene-d8	14.46	160	430216	21.04	ng/ul	0.00
51) 4-Nitrophenol-d4	14.97	143	57564	18.54	ng/ul	0.00
57) Fluorene-d10	15.75	176	344069	24.98	ng/ul	0.00
62) 4,6-Dinitro-2-methylphenol	15.87	200	59580	23.57	ng/ul	0.00
70) Anthracene-d10	17.61	188	598185	24.42	ng/ul	0.00
76) Pyrene-d10	19.88	212	796771	22.66	ng/ul	0.00
87) Benzo(a)pyrene-d12	24.85	264	835351	25.99	ng/ul	-0.03

Target Compounds

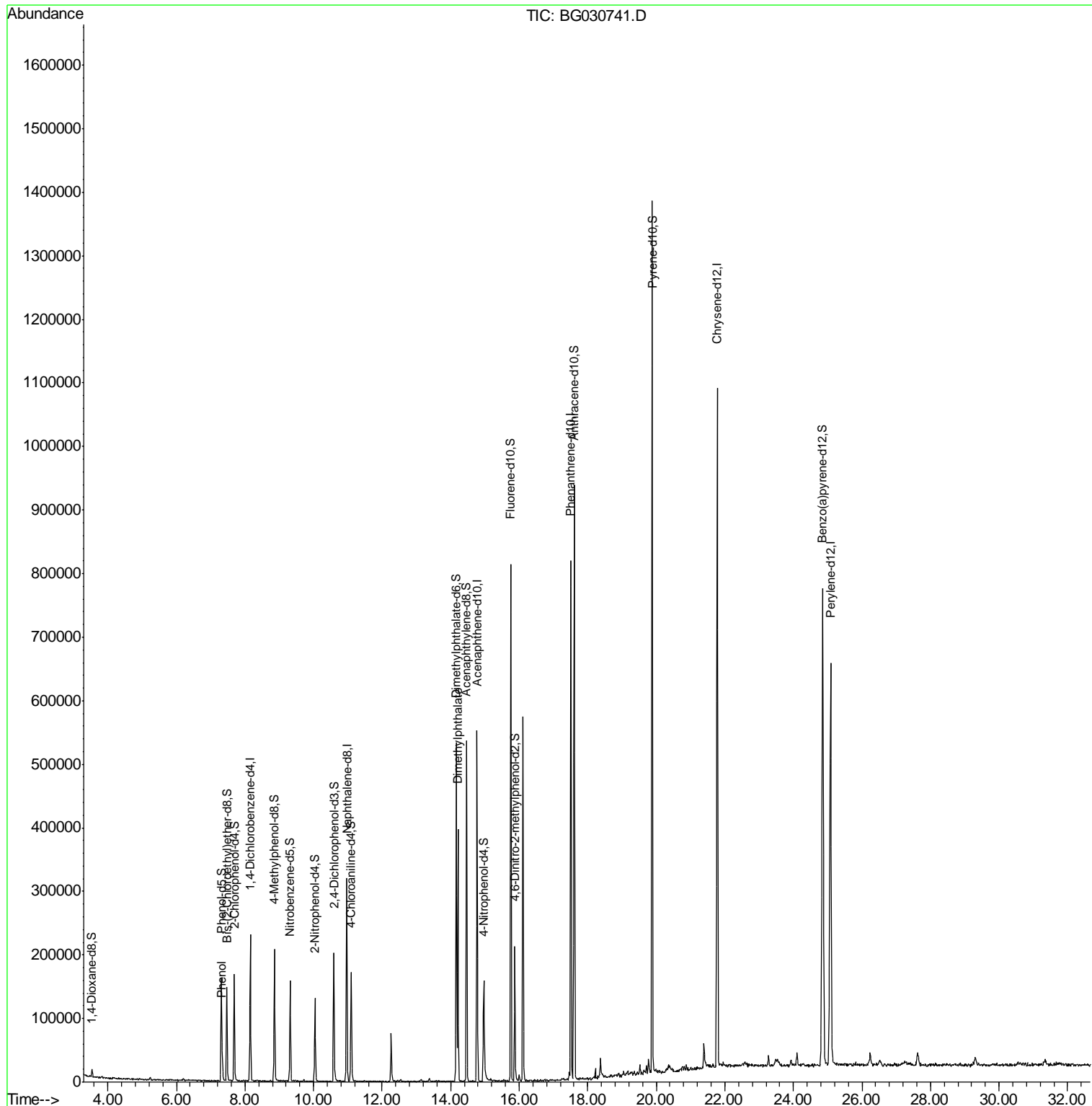
Target Compounds	R.T.	QIon	Response	Conc	Units	Ovalue
6) Phenol	7.34	94	18635	2.778	ng/ul#	85
44) Dimethylphthalate	14.21	163	282678	17.233	ng/ul	98

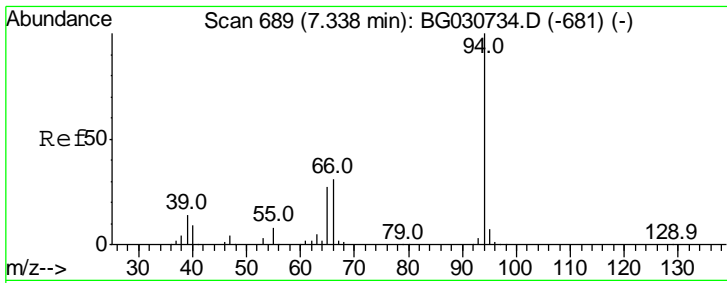
(#) = qualifier out of range (m) = manual integration (+) = signals summed

Data Path : \\74.0.250.170\SVOASRV\HPCHEM1\BNA G\DATA\BG110517\
 Data File : BG030741.D
 Acq On : 5 Nov 2017 16:51
 Operator : SJ/JU
 Sample : I6107-12
 Misc :
 ALS Vial : 9 Sample Multiplier: 1

Instrument :
 BNA_G
 ClientSampleId :
 B0EA5

Quant Time: Nov 06 00:54:08 2017
 Quant Method : Z:\HPCHEM1\BNA G\METHODS\SOM-EPA-BG101417.M
 Quant Title : SVOA CALIBRATION
 QLast Update : Mon Nov 06 00:53:03 2017
 Response via : Initial Calibration

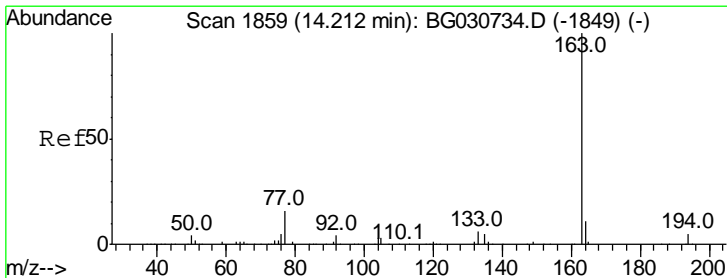
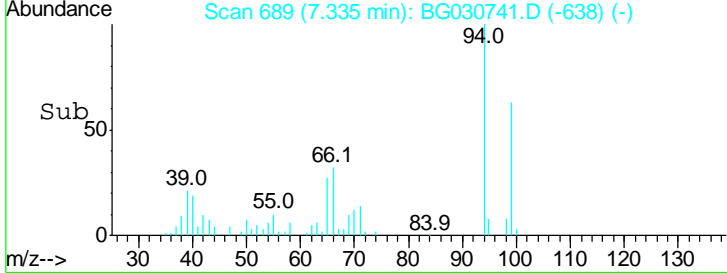
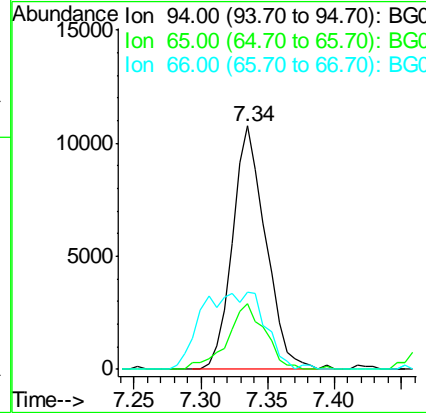
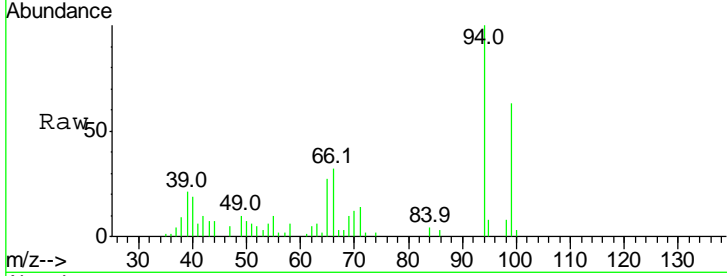




#6
 Phenol
 Concen: 2.778 ng/ul
 RT: 7.34 min Scan# 689
 Delta R.T. -0.00 min
 Lab File: BG030741.D
 Acq: 5 Nov 2017 16:51

Instrument :
 BNA_G
 ClientSampled :
 B0EA5

Tgt Ion	Resp	Lower	Upper
94	18635		
65	27.1	27.1	40.7#
66	31.7	34.6	52.0#



#44
 Dimethylphthalate
 Concen: 17.233 ng/ul
 RT: 14.21 min Scan# 1859
 Delta R.T. -0.00 min
 Lab File: BG030741.D
 Acq: 5 Nov 2017 16:51

Tgt Ion	Resp	Lower	Upper
163	282678		
194	4.6	3.5	5.3
164	10.4	7.6	11.4

