

Data Path : Z:\HPCHEM1\BNA G\DATA\BG110615\  
 Data File : BG019525.D  
 Acq On : 6 Nov 2015 23:21  
 Operator : UM/NP  
 Sample : G4291-05  
 Misc :  
 ALS Vial : 24 Sample Multiplier: 1

**Instrument :**  
 BNA\_G  
**ClientSampleId :**  
 BCY62

**Manual Integrations**  
**APPROVED**  
 Mmdadoda  
 11/9/2015 6:57:35 PM

Quant Time: Nov 07 01:25:36 2015  
 Quant Method : Z:\HPCHEM1\BNA G\METHODS\SOM02.2-EPA-BG102815.M  
 Quant Title : SVOA CALIBRATION  
 QLast Update : Fri Nov 06 23:58:14 2015  
 Response via : Initial Calibration

Internal Standards	R.T.	QIon	Response	Conc	Units	Dev(Min)
1) 1,4-Dichlorobenzene-d4	8.18	152	37924	20.00	ng/ul	0.00
18) Naphthalene-d8	11.01	136	147228	20.00	ng/ul	0.00
36) Acenaphthene-d10	14.81	164	124401	20.00	ng/ul	0.00
62) Phenanthrene-d10	17.55	188	354754	20.00	ng/ul	0.00
78) Chrysene-d12	21.83	240	459103	20.00	ng/ul	0.00
86) Perylene-d12	25.18	264	437146	20.00	ng/ul	0.00

System Monitoring Compounds

3) 1,4-Dioxane-d8	3.48	96	969	1.22	ng/uL	0.00
5) Phenol-d5	7.32	99	24295	6.98	ng/ul	0.00
7) Bis-(2-Chloroethyl)ether-d	7.49	67	78773	35.69	ng/ul	0.00
9) 2-Chlorophenol-d4	7.70	132	56752	26.11	ng/ul	0.00
13) 4-Methylphenol-d8	8.88	113	47157	17.01	ng/ul	0.00
19) Nitrobenzene-d5	9.35	128	40264	37.21	ng/ul	0.00
22) 2-Nitrophenol-d4	10.08	143	46047	35.85	ng/ul	0.00
26) 2,4-Dichlorophenol-d3	10.62	165	92665	33.25	ng/ul	0.00
29) 4-Chloroaniline-d4	11.15	131	2287	0.81	ng/ul	0.00
44) Dimethylphthalate-d6	14.20	166	364816	35.57	ng/ul	0.00
47) Acenaphthylene-d8	14.51	160	421118	37.07	ng/ul	0.00
52) 4-Nitrophenol-d4	14.99	143	11622m	7.13	ng/ul	0.00
58) Fluorene-d10	15.79	176	338310	35.65	ng/ul	0.00
63) 4,6-Dinitro-2-methylphenol	15.90	200	70756	30.81	ng/ul	0.00
71) Anthracene-d10	17.65	188	585305	36.19	ng/ul	0.00
79) Pyrene-d10	19.92	212	692697	34.48	ng/ul	0.00
90) Benzo(a)pyrene-d12	24.95	264	777164	35.43	ng/ul	0.00

Target Compounds

					Ovalue
4) Benzaldehyde	7.30	77	3526	1.56	ng/ul 91
33) 4-Chloro-3-methylphenol	12.27	107	8307	2.32	ng/ul# 90

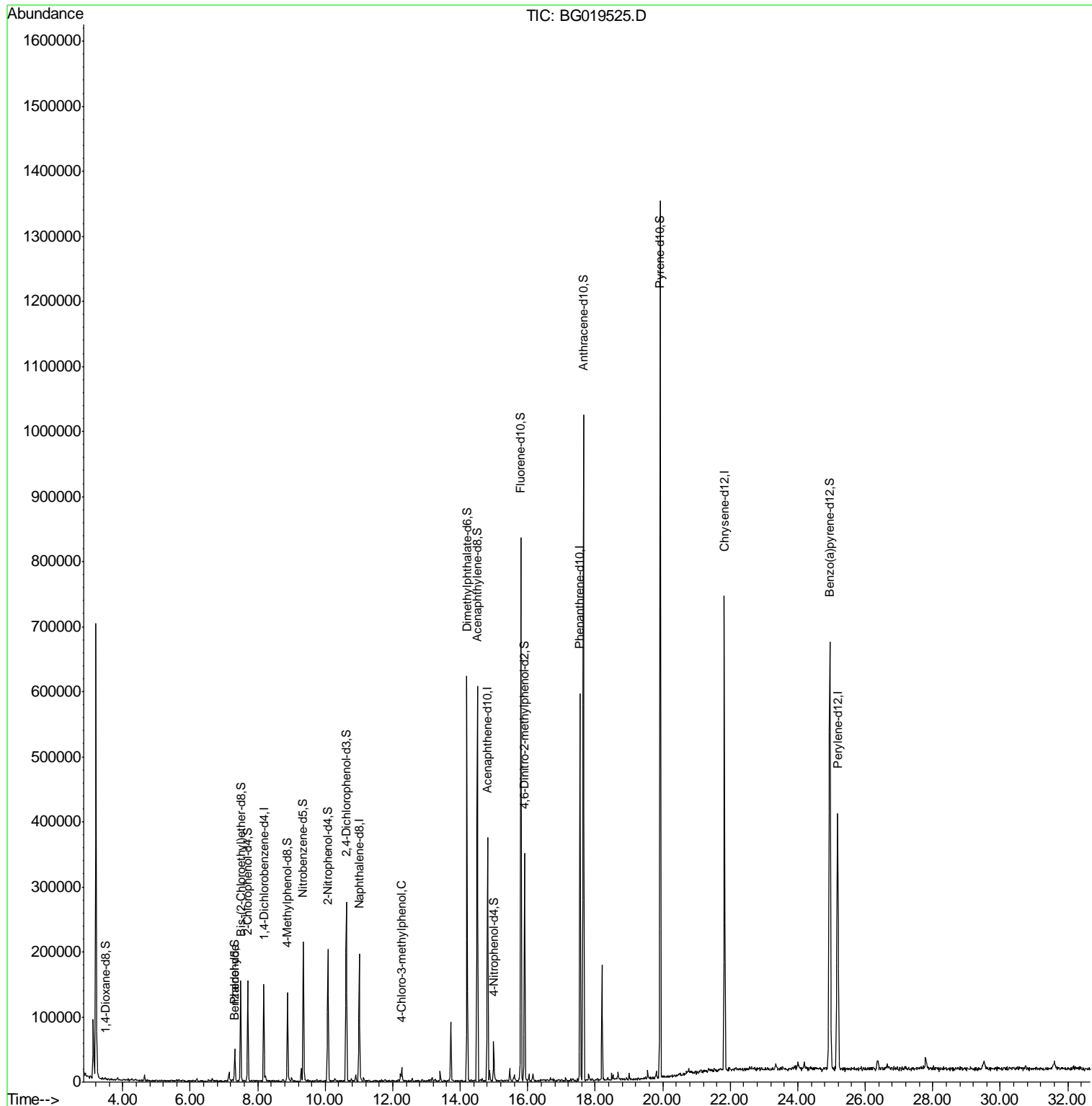
(#) = qualifier out of range (m) = manual integration (+) = signals summed

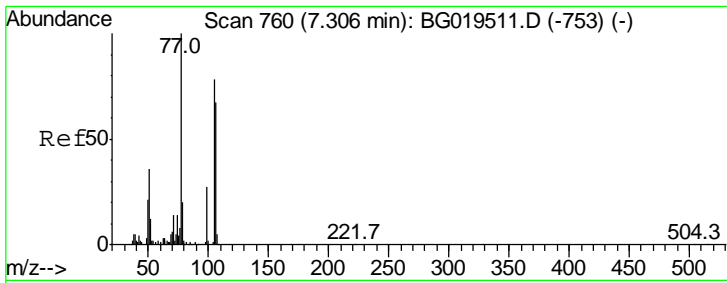
Data Path : Z:\HPCHEM1\BNA G\DATA\BG110615\  
 Data File : BG019525.D  
 Acq On : 6 Nov 2015 23:21  
 Operator : UM/NP  
 Sample : G4291-05  
 Misc :  
 ALS Vial : 24 Sample Multiplier: 1

Instrument :  
 BNA\_G  
 ClientSampleId :  
 BCY62

Manual Integrations  
 APPROVED  
 Mmdadoda  
 11/9/2015 6:57:35 PM

Quant Time: Nov 07 01:25:36 2015  
 Quant Method : Z:\HPCHEM1\BNA G\METHODS\SOM02.2-EPA-BG102815.M  
 Quant Title : SVOA CALIBRATION  
 QLast Update : Fri Nov 06 23:58:14 2015  
 Response via : Initial Calibration



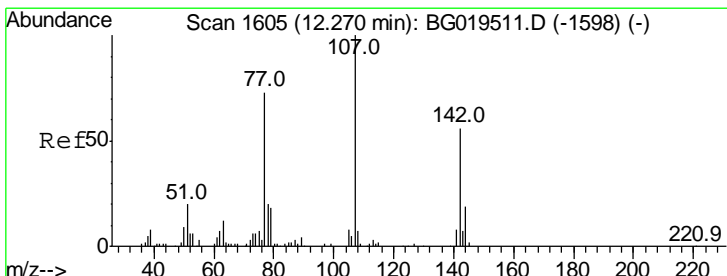
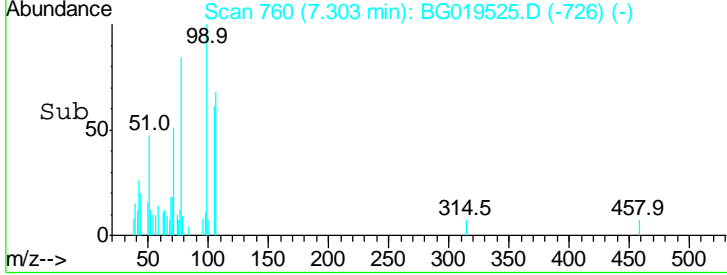
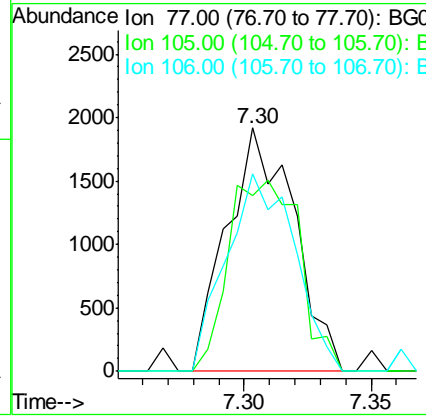
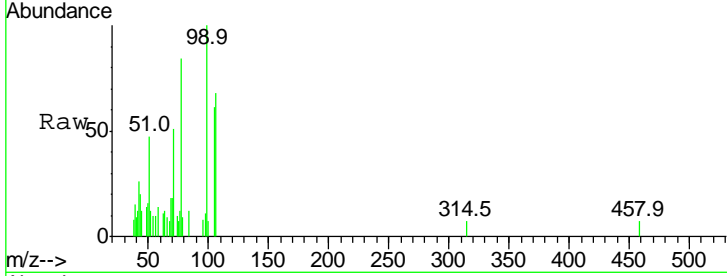


#4  
Benzaldehyde  
Concen: 1.56 ng/ul  
RT: 7.30 min Scan# 760  
Delta R.T. -0.00 min  
Lab File: BG019525.D  
Acq: 6 Nov 2015 23:21

**Instrument :**  
BNA\_G  
**ClientSampled :**  
BCY62

Tgt Ion	Resp	Lower	Upper
77	100		
105	72.3	61.6	92.4
106	81.2	56.4	84.6

**Manual Integrations**  
**APPROVED**  
Mmddadoda  
11/9/2015 6:57:35 PM



#33  
4-Chloro-3-methylphenol  
Concen: 2.32 ng/ul  
RT: 12.27 min Scan# 1605  
Delta R.T. -0.00 min  
Lab File: BG019525.D  
Acq: 6 Nov 2015 23:21

Tgt Ion	Resp	Lower	Upper
107	100		
144	21.3	13.0	19.6#
142	51.6	47.0	70.6

