

Data Path : Z:\SVOASRV\HPCHEM1\BNA G\DATA\BG110620\
 Data File : BG047244.D
 Acq On : 6 Nov 2020 15:09
 Operator : CG/JU
 Sample : L4534-03
 Misc :
 ALS Vial : 7 Sample Multiplier: 1

Instrument :
 BNA_G
 ClientSampleId :
 C0BP0

Integration Parameters: LSCINT.P

Integrator: RTE
 Smoothing : OFF Filtering: 5
 Sampling : 1 Min Area: 0.1 % of largest Peak
 Start Thrs: 0.2 Max Peaks: 100
 Stop Thrs : 0 Peak Location: TOP

If leading or trailing edge < 100 prefer < Baseline drop else tangent >
 Peak separation: 5

Method : Z:\SVOASRV\HPCHEM1\BNA_G\METHODS\SOM-EPA-BG102220MA.M
 Title : SVOA CALIBRATION

Signal : TIC

peak #	R.T. min	first scan	max scan	last scan	PK TY	peak height	corr. area	corr. % max.	% of total
1	3.474	21	23	28	rVB2	1358	1573	0.14%	0.029%
2	3.639	44	51	52	rBV2	3234	4933	0.45%	0.090%
3	3.668	53	56	62	rVB	15143	18080	1.66%	0.330%
4	3.762	70	72	74	rBV2	2337	2309	0.21%	0.042%
5	3.903	95	96	99	rBV	2025	1516	0.14%	0.028%
6	4.138	134	136	137	rBV	1938	1612	0.15%	0.029%
7	4.156	137	139	144	rVB2	4376	5141	0.47%	0.094%
8	4.279	156	160	161	rVB	1449	1516	0.14%	0.028%
9	4.344	166	171	173	rVB2	970	1692	0.16%	0.031%
10	4.379	173	177	180	rBV	2051	2282	0.21%	0.042%
11	4.602	213	215	219	rVB	3424	3723	0.34%	0.068%
12	4.673	224	227	231	rBV	1726	2449	0.22%	0.045%
13	4.814	248	251	256	rBV3	1533	2508	0.23%	0.046%
14	4.896	261	265	267	rBV	1549	1685	0.15%	0.031%
15	5.019	282	286	287	rBV	2207	1718	0.16%	0.031%
16	5.160	306	310	311	rBV	1303	1779	0.16%	0.032%
17	5.337	338	340	342	rBV	2164	1630	0.15%	0.030%
18	5.395	347	350	353	rBV2	1391	1712	0.16%	0.031%
19	5.454	355	360	363	rBV	1353	2079	0.19%	0.038%
20	5.630	388	390	393	rVB	1563	1590	0.15%	0.029%
21	6.253	491	496	500	rBV2	1097	1941	0.18%	0.035%
22	6.476	531	534	535	rBV	2212	1789	0.16%	0.033%
23	6.870	596	601	606	rBV2	1289	3043	0.28%	0.055%
24	6.982	617	620	623	rBV	1394	2181	0.20%	0.040%
25	7.140	645	647	649	rBV2	3397	3545	0.33%	0.065%
26	7.223	657	661	664	rVB	1649	1687	0.15%	0.031%
27	7.475	702	704	705	rBV	1730	1649	0.15%	0.030%
28	7.563	714	719	720	rBV2	1478	1766	0.16%	0.032%
29	7.616	725	728	730	rBV	3491	3315	0.30%	0.060%
30	8.004	784	794	804	rBV	249777	417560	38.31%	7.611%
31	8.127	812	815	816	rBV2	2900	1973	0.18%	0.036%
32	8.145	816	818	820	rVB2	2950	1943	0.18%	0.035%
33	8.380	854	858	864	rVB3	4203	6641	0.61%	0.121%
34	8.780	923	926	929	rVB2	2250	2357	0.22%	0.043%

Data Path : Z:\SVOASRV\HPCHEM1\BNA_G\DATA\BG110620\
 Data File : BG047244.D
 Acq On : 6 Nov 2020 15:09
 Operator : CG/JU
 Sample : L4534-03
 Misc :
 ALS Vial : 7 Sample Multiplier: 1

Instrument :
 BNA_G
 ClientSampleId :
 C0BP0

Integration Parameters: LSCINT.P

Integrator: RTE
 Smoothing : OFF
 Sampling : 1
 Start Thrs: 0.2
 Stop Thrs : 0

Filtering: 5
 Min Area: 0.1 % of largest Peak
 Max Peaks: 100
 Peak Location: TOP

If leading or trailing edge < 100 prefer < Baseline drop else tangent >
 Peak separation: 5

Method : Z:\SVOASRV\HPCHEM1\BNA_G\METHODS\SOM-EPA-BG102220MA.M
 Title : SVOA CALIBRATION

35	8.885	941	944	947	rVB2	1690	1972	0.18%	0.036%
36	9.238	999	1004	1010	rVB4	4944	9929	0.91%	0.181%
37	9.320	1016	1018	1021	rVB	1297	1562	0.14%	0.028%
38	9.491	1043	1047	1052	rVB3	1194	2095	0.19%	0.038%
39	9.637	1068	1072	1075	rBV2	1421	1684	0.15%	0.031%
40	9.996	1130	1133	1138	rBV2	1396	1931	0.18%	0.035%
41	10.507	1216	1220	1224	rVB3	1576	1972	0.18%	0.036%
42	10.813	1263	1272	1283	rBV	302424	552226	50.66%	10.066%
43	11.576	1400	1402	1407	rVB	1293	1893	0.17%	0.035%
44	11.976	1467	1470	1475	rBV2	1324	2125	0.19%	0.039%
45	12.652	1582	1585	1586	rBV	1779	1660	0.15%	0.030%
46	13.045	1651	1652	1658	rVB3	2653	2624	0.24%	0.048%
47	13.157	1667	1671	1672	rVV3	1444	1838	0.17%	0.034%
48	13.257	1682	1688	1692	rBV7	4892	9189	0.84%	0.167%
49	13.409	1712	1714	1717	rVB	1822	1630	0.15%	0.030%
50	13.462	1719	1723	1726	rBV3	2503	3870	0.36%	0.071%
51	13.556	1736	1739	1741	rVB2	2848	3286	0.30%	0.060%
52	13.592	1741	1745	1747	rVB3	4355	3878	0.36%	0.071%
53	13.662	1755	1757	1761	rVB3	3339	3147	0.29%	0.057%
54	13.715	1763	1766	1770	rBV4	4545	5001	0.46%	0.091%
55	13.762	1770	1774	1777	rVB3	1954	2585	0.24%	0.047%
56	13.862	1789	1791	1793	rVV2	2205	1950	0.18%	0.036%
57	13.891	1794	1796	1803	rVB4	3227	4287	0.39%	0.078%
58	13.968	1803	1809	1814	rBV5	10711	18052	1.66%	0.329%
59	14.056	1820	1824	1830	rVB3	3793	6568	0.60%	0.120%
60	14.115	1832	1834	1839	rBV3	2587	3316	0.30%	0.060%
61	14.220	1851	1852	1855	rBV2	1997	1663	0.15%	0.030%
62	14.643	1917	1924	1932	rBV	499693	769128	70.56%	14.020%
63	14.890	1962	1966	1969	rBV2	2039	2648	0.24%	0.048%
64	14.955	1973	1977	1982	rVB	2959	4702	0.43%	0.086%
65	15.096	1997	2001	2007	rVB4	4638	5807	0.53%	0.106%
66	15.983	2150	2152	2156	rVB2	1587	2163	0.20%	0.039%
67	16.012	2156	2157	2160	rBV2	1389	1586	0.15%	0.029%
68	16.347	2211	2214	2215	rBV	2093	1841	0.17%	0.034%
69	17.134	2345	2348	2353	rBV4	2613	4246	0.39%	0.077%
70	17.176	2353	2355	2356	rVV	3249	2383	0.22%	0.043%
71	17.211	2359	2361	2363	rVB	2562	2166	0.20%	0.039%

Data Path : Z:\SVOASRV\HPCHEM1\BNA G\DATA\BG110620\
 Data File : BG047244.D
 Acq On : 6 Nov 2020 15:09
 Operator : CG/JU
 Sample : L4534-03
 Misc :
 ALS Vial : 7 Sample Multiplier: 1

Instrument :
 BNA_G
 ClientSampleId :
 COBPO

Integration Parameters: LSCINT.P

Integrator: RTE
 Smoothing : OFF
 Sampling : 1
 Start Thrs: 0.2
 Stop Thrs : 0

Filtering: 5
 Min Area: 0.1 % of largest Peak
 Max Peaks: 100
 Peak Location: TOP

If leading or trailing edge < 100 prefer < Baseline drop else tangent >
 Peak separation: 5

Method : Z:\SVOASRV\HPCHEM1\BNA_G\METHODS\SOM-EPA-BG102220MA.M
 Title : SVOA CALIBRATION

72	17.293	2374	2375	2378	rBV	1445	1553	0.14%	0.028%
73	17.387	2383	2391	2396	rBV	605331	929343	85.26%	16.940%
74	17.875	2471	2474	2477	rBV4	1681	1978	0.18%	0.036%
75	17.986	2487	2493	2498	rBV6	11940	23353	2.14%	0.426%
76	18.051	2502	2504	2507	rBV2	1621	1687	0.15%	0.031%
77	18.098	2509	2512	2514	rBV	2480	2307	0.21%	0.042%
78	18.263	2538	2540	2543	rVV4	3453	3495	0.32%	0.064%
79	18.310	2545	2548	2554	rVB4	7356	11015	1.01%	0.201%
80	18.398	2561	2563	2564	rBV2	2125	2002	0.18%	0.036%
81	18.451	2568	2572	2576	rVV5	18687	26269	2.41%	0.479%
82	18.650	2604	2606	2609	rBV4	3599	5010	0.46%	0.091%
83	18.697	2611	2614	2615	rBV3	4562	4176	0.38%	0.076%
84	18.733	2618	2620	2623	rVB4	5228	4803	0.44%	0.088%
85	18.809	2631	2633	2635	rBV3	2086	1958	0.18%	0.036%
86	18.968	2658	2660	2662	rBV2	2935	2842	0.26%	0.052%
87	19.103	2680	2683	2684	rBV3	3339	3634	0.33%	0.066%
88	19.220	2700	2703	2708	rBV5	8621	15678	1.44%	0.286%
89	19.267	2708	2711	2713	rVV4	14994	18528	1.70%	0.338%
90	19.297	2713	2716	2722	rVB5	19155	30571	2.80%	0.557%
91	19.438	2735	2740	2745	rBV	65395	97583	8.95%	1.779%
92	19.573	2759	2763	2767	rBV5	22965	29933	2.75%	0.546%
93	19.767	2793	2796	2798	rBV3	9343	14390	1.32%	0.262%
94	19.796	2798	2801	2807	rVB	23784	37869	3.47%	0.690%
95	20.013	2836	2838	2843	rVB5	21499	24539	2.25%	0.447%
96	20.207	2868	2871	2876	rVB6	12088	15337	1.41%	0.280%
97	20.331	2889	2892	2896	rVB5	20756	26408	2.42%	0.481%
98	20.842	2976	2979	2982	rBV2	30418	35027	3.21%	0.638%
99	21.647	3109	3116	3122	rBV2	643831	1063233	97.55%	19.381%
100	24.837	3650	3659	3671	rVB	380553	1089985	100.00%	19.868%

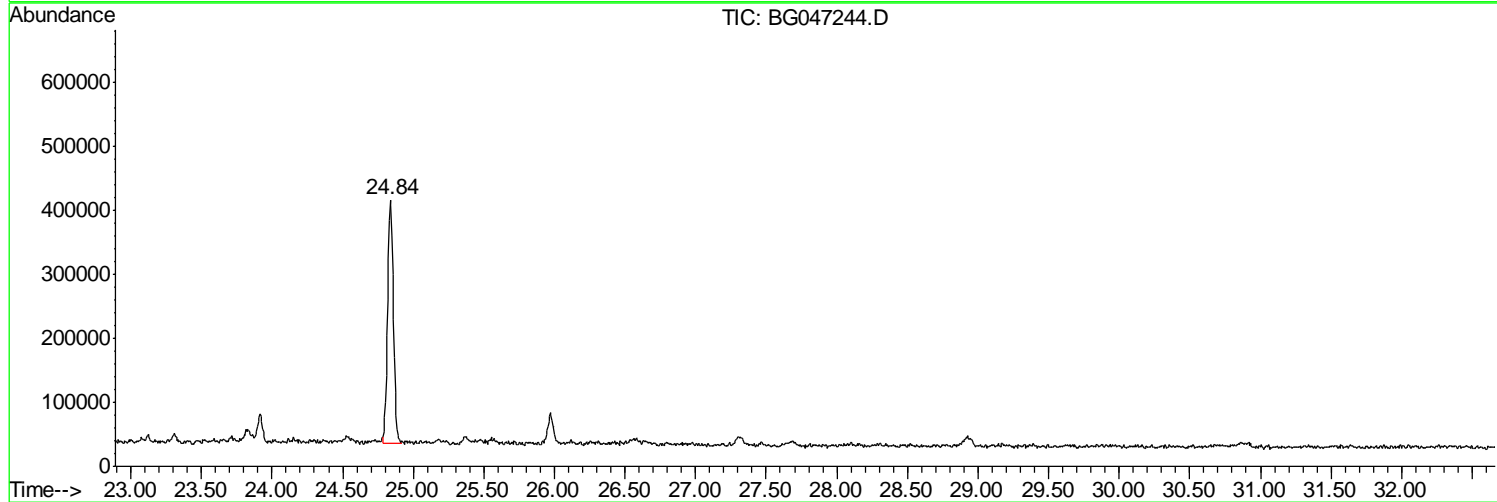
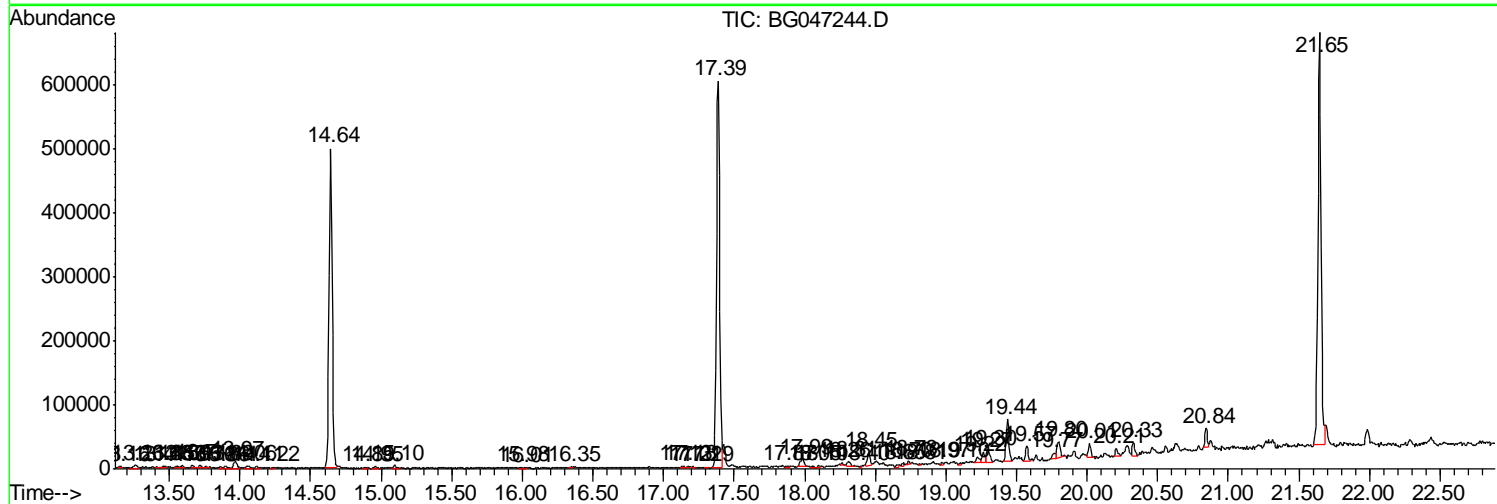
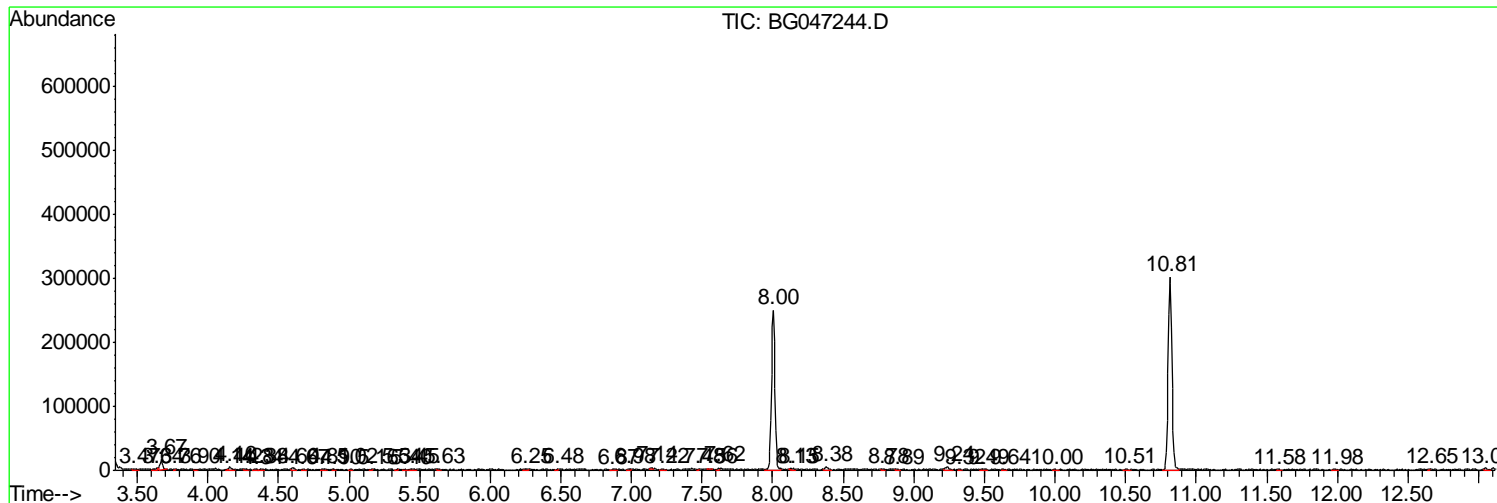
Sum of corrected areas: 5486026

Data Path : Z:\SVOASRV\HPCHEM1\BNA G\DATA\BG110620\
 Data File : BG047244.D
 Acq On : 6 Nov 2020 15:09
 Operator : CG/JU
 Sample : L4534-03
 Misc :
 ALS Vial : 7 Sample Multiplier: 1

Instrument :
 BNA_G
 ClientSampled :
 COBPO

Quant Method : Z:\SVOASRV\HPCHEM1\BNA_G\METHODS\SOM-EPA-BG102220MA.M
 Quant Title : SVOA CALIBRATION

TIC Library : C:\DATABASE\NIST11.L
 TIC Integration Parameters: LSCINT.P



Data_Path_ : Z:\SVOASRV\HPCHEM1\BNA_G\DATA\BG110620\
Data_File_ : BG047244.D
Acq_On_ : 6.Nov.2020 15:099
Operator_ : CG/JJU
Sample_ : L4534-033
Misc_ :
ALS_Vial_ : 7 Sample_Multiplier: 11

Instrument :
BNA_G
ClientSampleId :
C0BPO

Quant_Method_ : Z:\SVOASRV\HPCHEM1\BNA_G\METHODS\SOM-EPA-BG102220MA_MM
Quant_Title_ : SVOA_CALIBRATIONN

TIC_Library_ : C:\DATABASE\NIST11.LL
TIC_Integration Parameters: LSCINT.PP

TIC Top Hit name	RT	EstConc	Units	Response	--Internal Standard--			
					#	RT	Resp	Conc

No Library Search Compounds Detected
