

Data Path : Z:\svoasrv\HPCHEM1\BNA_G\Data\BG110624\
 Data File : BG063173.D
 Acq On : 6 Nov 2024 18:13
 Operator : RC/JU
 Sample : P4634-05
 Misc :
 ALS Vial : 10 Sample Multiplier: 1

Instrument :
 BNA_G
 ClientSampleId :
 COPI9

Integration Parameters: LSCINT.P

Integrator: RTE
 Smoothing : OFF Filtering: 5
 Sampling : 1 Min Area: 0.1 % of largest Peak
 Start Thrs: 0.2 Max Peaks: 100
 Stop Thrs : 0 Peak Location: TOP

If leading or trailing edge < 100 prefer < Baseline drop else tangent >
 Peak separation: 5

Method : Z:\svoasrv\HPCHEM1\BNA_G\Methods\SFAM-EPA-BG110624.MA.M
 Title : SVOA CALIBRATION

Signal : TIC: BG063173.D\data.ms

peak #	R.T. min	first scan	max scan	last scan	PK TY	peak height	corr. area	corr. % max.	% of total
1	3.306	33	37	44	rVB4	15140	23488	0.58%	0.070%
2	3.711	102	106	115	rBV2	110652	182531	4.54%	0.542%
3	4.052	162	164	167	rVB3	6031	6655	0.17%	0.020%
4	4.228	191	194	198	rBV4	5171	7919	0.20%	0.023%
5	4.481	234	237	239	rBV4	4149	5930	0.15%	0.018%
6	4.546	243	248	254	rBV	30997	49402	1.23%	0.147%
7	4.640	261	264	268	rBV4	4856	8199	0.20%	0.024%
8	4.945	314	316	318	rBV3	5892	5960	0.15%	0.018%
9	5.145	346	350	352	rVB3	4859	6830	0.17%	0.020%
10	5.345	380	384	389	rBV5	5260	8002	0.20%	0.024%
11	5.450	400	402	405	rBV3	4088	5781	0.14%	0.017%
12	7.007	660	667	676	rBV	333294	585604	14.55%	1.737%
13	7.172	688	695	704	rBV	230810	382971	9.52%	1.136%
14	7.301	713	717	720	rBV5	5423	6095	0.15%	0.018%
15	7.372	723	729	739	rBV	303306	523340	13.01%	1.553%
16	7.836	802	808	815	rBV	216015	371823	9.24%	1.103%
17	8.547	921	929	937	rBV	447010	763828	18.98%	2.266%
18	8.711	952	957	961	rBV3	3698	5782	0.14%	0.017%
19	8.993	997	1005	1012	rBV	321786	573575	14.25%	1.702%
20	9.164	1033	1034	1039	rVB2	6000	7907	0.20%	0.023%
21	9.275	1048	1053	1056	rVB3	3809	6174	0.15%	0.018%
22	9.557	1095	1101	1106	rBV3	26599	45323	1.13%	0.134%
23	9.710	1121	1127	1135	rBV2	305898	546704	13.59%	1.622%
24	10.121	1194	1197	1198	rBV2	6661	5631	0.14%	0.017%
25	10.251	1210	1219	1231	rBV	455396	818130	20.33%	2.427%
26	10.627	1275	1283	1291	rBV	346568	604919	15.03%	1.795%
27	10.762	1298	1306	1320	rBV	436042	821963	20.43%	2.439%
28	10.973	1339	1342	1345	rBV2	5089	5644	0.14%	0.017%
29	11.179	1371	1377	1381	rBV7	12663	31282	0.78%	0.093%
30	11.461	1422	1425	1429	rVB3	5446	7172	0.18%	0.021%
31	12.225	1550	1555	1559	rVB2	10483	16493	0.41%	0.049%
32	12.930	1673	1675	1677	rBV3	6102	6194	0.15%	0.018%
33	13.429	1755	1760	1761	rBV3	4198	6145	0.15%	0.018%
34	13.882	1828	1837	1845	rBV	1253785	1814301	45.09%	5.383%
35	13.976	1851	1853	1855	rVB2	7249	6594	0.16%	0.020%
36	14.005	1855	1858	1861	rBV3	8026	9455	0.23%	0.028%

Data Path : Z:\svoasrv\HPCHEM1\BNA_G\Data\BG110624\
 Data File : BG063173.D
 Acq On : 6 Nov 2024 18:13
 Operator : RC/JU
 Sample : P4634-05
 Misc :
 ALS Vial : 10 Sample Multiplier: 1

Instrument :
 BNA_G
 ClientSampleId :
 COPI9

Integration Parameters: LSCINT.P

Integrator: RTE
 Smoothing : OFF Filtering: 5
 Sampling : 1 Min Area: 0.1 % of largest Peak
 Start Thrs: 0.2 Max Peaks: 100
 Stop Thrs : 0 Peak Location: TOP

If leading or trailing edge < 100 prefer < Baseline drop else tangent >
 Peak separation: 5

Method : Z:\svoasrv\HPCHEM1\BNA_G\Methods\SFAM-EPA-BG110624.MA.M
 Title : SVOA CALIBRATION

37	14.170	1875	1886	1893	rBV2	1114685	1770645	44.01%	5.254%
38	14.475	1932	1938	1946	rBV	701702	1070100	26.59%	3.175%
39	14.681	1966	1973	1988	rBV	470067	800303	19.89%	2.375%
40	14.898	2006	2010	2015	rVB6	9193	11520	0.29%	0.034%
41	15.063	2034	2038	2039	rBV2	5679	6278	0.16%	0.019%
42	15.274	2070	2074	2075	rBV2	5168	5821	0.14%	0.017%
43	15.468	2101	2107	2114	rBV	1625865	2462457	61.20%	7.306%
44	15.591	2122	2128	2139	rVB	591946	862414	21.43%	2.559%
45	15.709	2144	2148	2149	rBV3	10547	10574	0.26%	0.031%
46	15.832	2164	2169	2176	rBV2	249175	364050	9.05%	1.080%
47	16.026	2201	2202	2204	rBV2	6711	5918	0.15%	0.018%
48	16.255	2237	2241	2246	rBV4	5624	9607	0.24%	0.029%
49	16.391	2262	2264	2265	rBV2	8212	6007	0.15%	0.018%
50	16.720	2318	2320	2325	rVB3	5947	5826	0.14%	0.017%
51	17.225	2397	2406	2414	rBV	1106784	1622781	40.33%	4.815%
52	17.325	2416	2423	2431	rBV	2031454	2973523	73.90%	8.822%
53	17.425	2436	2440	2445	rBV6	19001	29055	0.72%	0.086%
54	17.619	2469	2473	2477	rBV5	7825	14009	0.35%	0.042%
55	17.795	2498	2503	2508	rVB6	7499	12883	0.32%	0.038%
56	18.077	2548	2551	2555	rBV4	5394	10156	0.25%	0.030%
57	18.130	2555	2560	2568	rBV2	164593	273672	6.80%	0.812%
58	18.418	2606	2609	2610	rBV2	6035	6717	0.17%	0.020%
59	18.553	2628	2632	2637	rBV5	24774	33642	0.84%	0.100%
60	18.647	2646	2648	2651	rVB4	8990	9326	0.23%	0.028%
61	19.187	2735	2740	2745	rBV3	34866	53324	1.33%	0.158%
62	19.258	2748	2752	2757	rVV3	27309	44324	1.10%	0.132%
63	19.405	2774	2777	2782	rBV6	28945	41896	1.04%	0.124%
64	19.622	2808	2814	2820	rBV	2909082	4023700	100.00%	11.938%
65	19.669	2820	2822	2829	rVB7	27702	44368	1.10%	0.132%
66	19.863	2853	2855	2857	rVB2	10768	7179	0.18%	0.021%
67	20.168	2904	2907	2913	rVB2	33501	43133	1.07%	0.128%
68	20.668	2988	2992	2994	rVB2	39389	39842	0.99%	0.118%
69	20.862	3022	3025	3030	rBV4	20197	26131	0.65%	0.078%
70	21.144	3068	3073	3083	rBV2	171662	300831	7.48%	0.893%
71	21.479	3123	3130	3139	rBV	1314851	2097946	52.14%	6.225%
72	21.673	3159	3163	3166	rBV3	89020	160864	4.00%	0.477%
73	23.641	3495	3498	3505	rVB4	53999	99492	2.47%	0.295%
74	24.305	3601	3611	3625	rVB	1554876	3930403	97.68%	11.662%
75	24.510	3636	3646	3658	rBV	772472	2129584	52.93%	6.318%

Data Path : Z:\svoasrv\HPCHEM1\BNA_G\Data\BG110624\
Data File : BG063173.D
Acq On : 6 Nov 2024 18:13
Operator : RC/JU
Sample : P4634-05
Misc :
ALS Vial : 10 Sample Multiplier: 1

Instrument :
BNA_G
ClientSampleId :
C0PI9

Integration Parameters: LSCINT.P
Integrator: RTE
Smoothing : OFF Filtering: 5
Sampling : 1 Min Area: 0.1 % of largest Peak
Start Thrs: 0.2 Max Peaks: 100
Stop Thrs : 0 Peak Location: TOP

If leading or trailing edge < 100 prefer < Baseline drop else tangent >
Peak separation: 5

Method : Z:\svoasrv\HPCHEM1\BNA_G\Methods\SFAM-EPA-BG110624.MA.M
Title : SVOA CALIBRATION

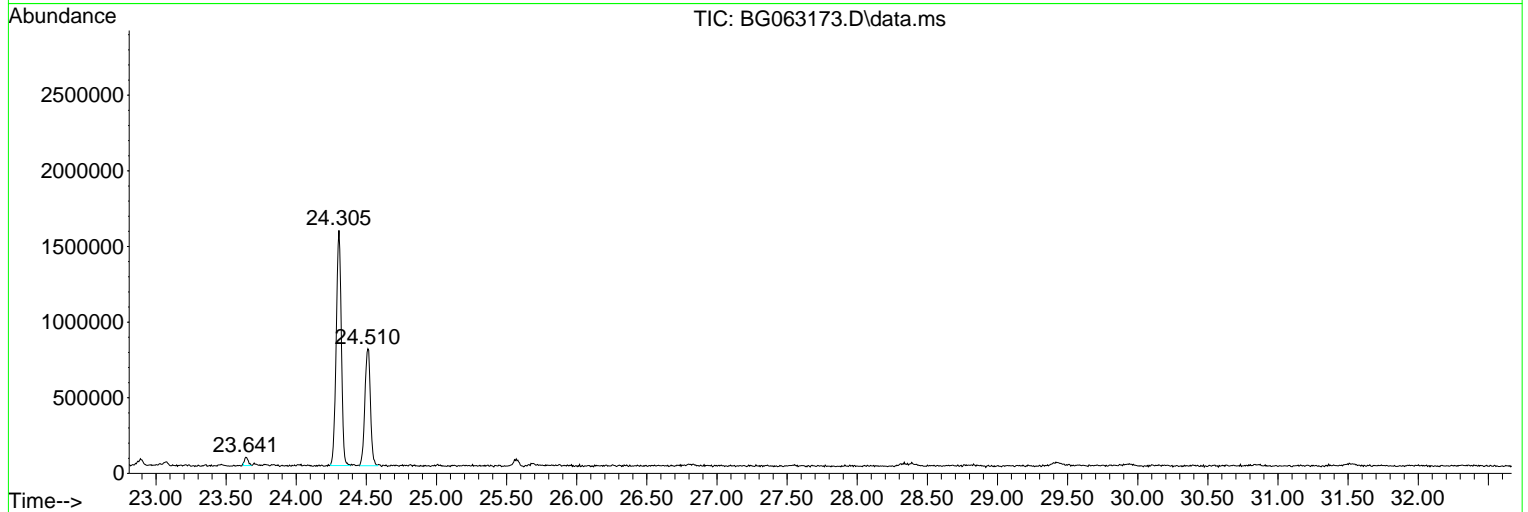
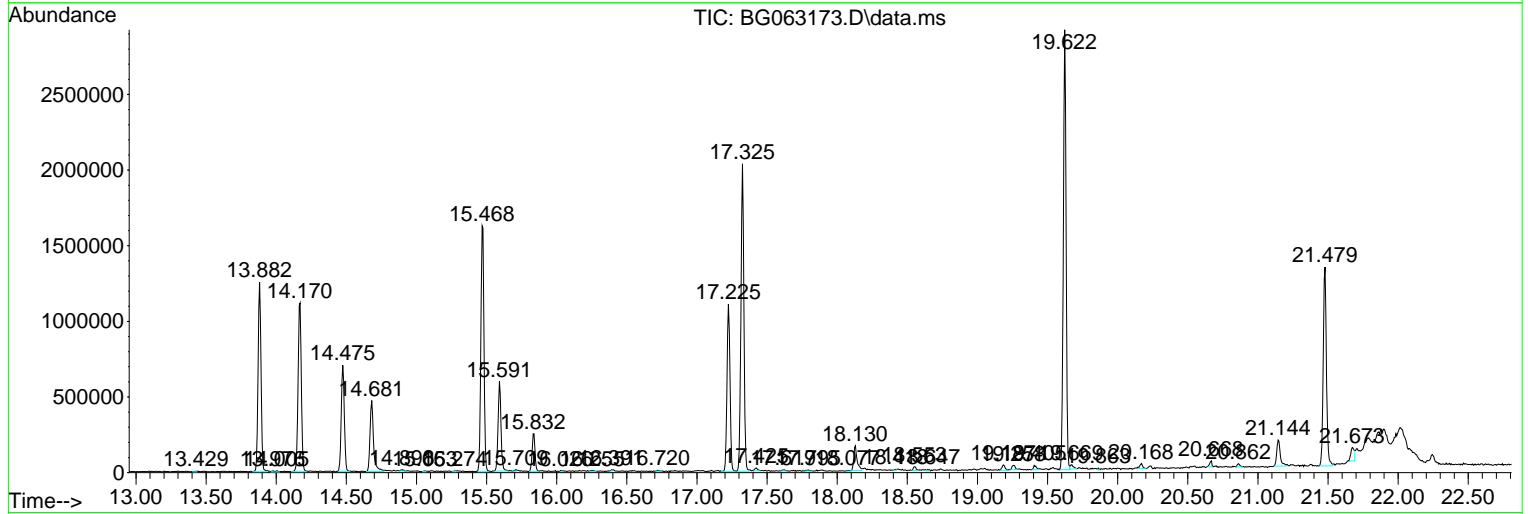
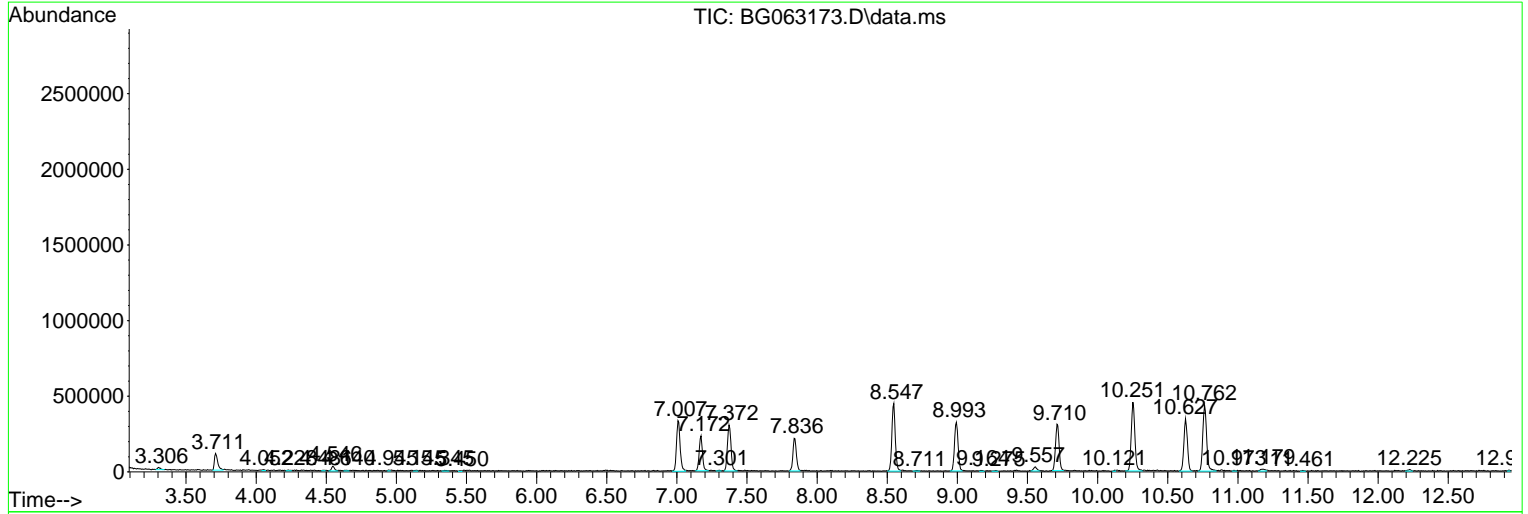
Sum of corrected areas: 33704047

Data Path : Z:\svoasrv\HPCHEM1\BNA_G\Data\BG110624\
 Data File : BG063173.D
 Acq On : 6 Nov 2024 18:13
 Operator : RC/JU
 Sample : P4634-05
 Misc :
 ALS Vial : 10 Sample Multiplier: 1

Instrument :
 BNA_G
ClientSampleId :
 COPI9

Quant Method : Z:\svoasrv\HPCHEM1\BNA_G\Methods\SFAM-EPA-BG110624.MA.M
 Quant Title : SVOA CALIBRATION

TIC Library : C:\DATABASE\NIST20.L
 TIC Integration Parameters: LSCINT.P



Data Path : Z:\svoasrv\HPCHEM1\BNA_G\Data\BG110624\
 Data File : BG063173.D
 Acq On : 6 Nov 2024 18:13
 Operator : RC/JU
 Sample : P4634-05
 Misc :
 ALS Vial : 10 Sample Multiplier: 1

Instrument :
 BNA_G
 ClientSampleId :
 C0PI9

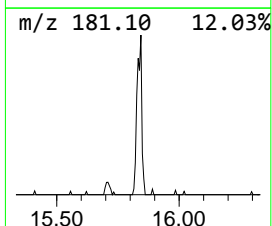
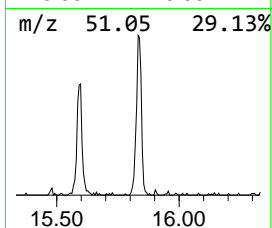
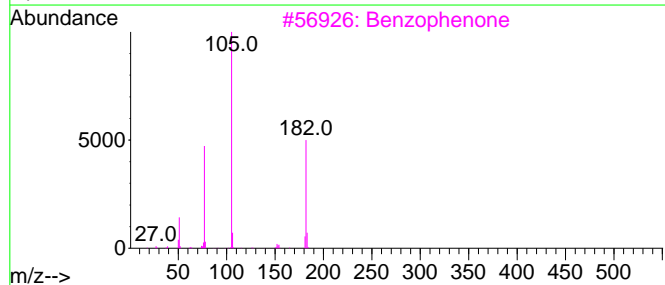
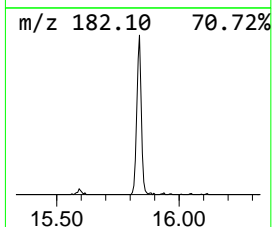
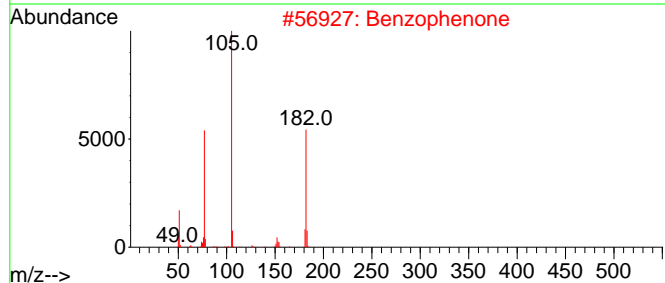
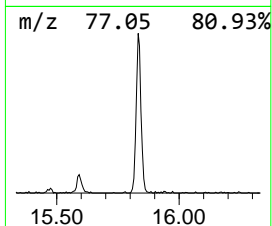
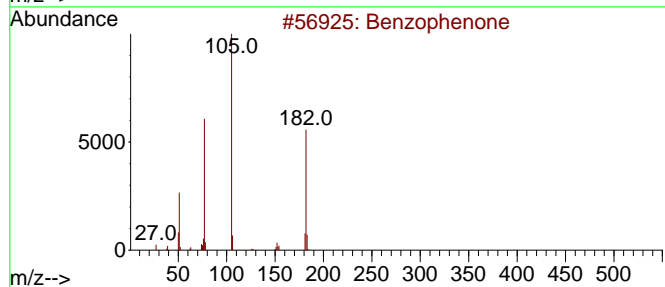
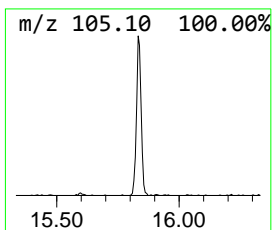
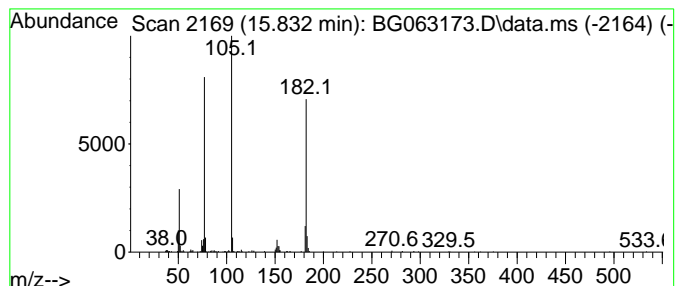
Quant Method : Z:\svoasrv\HPCHEM1\BNA_G\Methods\SFAM-EPA-BG110624.MA.M
 Quant Title : SVOA CALIBRATION

TIC Library : C:\DATABASE\NIST20.L
 TIC Integration Parameters: LSCINT.P

 Peak Number 2 Benzophenone Concentration Rank 1

R.T.	EstConc	Area	Relative to ISTD	R.T.
15.832	6.80 ng/ul	364050	Acenaphthene-d10	14.475

Hit#	of	5	Tentative ID	MW	MolForm	CAS#	Qual
1			Benzophenone	182	C13H10O	000119-61-9	96
2			Benzophenone	182	C13H10O	000119-61-9	95
3			Benzophenone	182	C13H10O	000119-61-9	86
4			Benzophenone	182	C13H10O	000119-61-9	70
5			Benzoylformic acid	150	C8H6O3	000611-73-4	53



Data Path : Z:\svoasrv\HPCHEM1\BNA_G\Data\BG110624\
 Data File : BG063173.D
 Acq On : 6 Nov 2024 18:13
 Operator : RC/JU
 Sample : P4634-05
 Misc :
 ALS Vial : 10 Sample Multiplier: 1

Instrument :
 BNA_G
 ClientSampleId :
 C0PI9

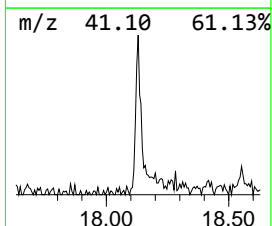
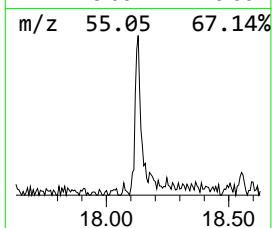
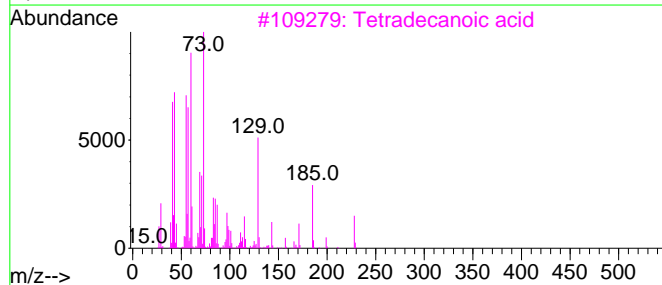
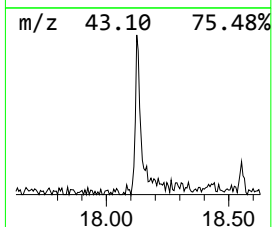
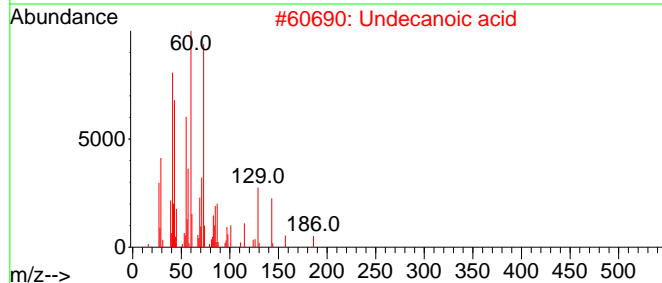
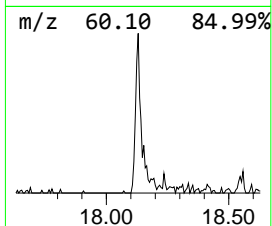
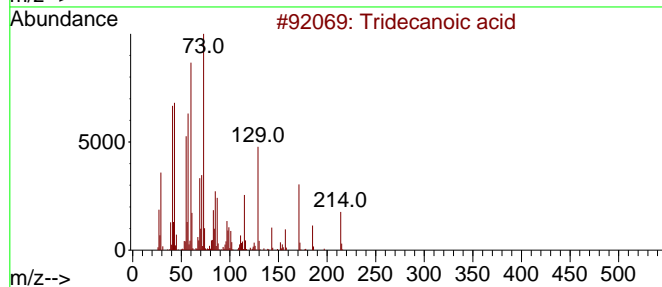
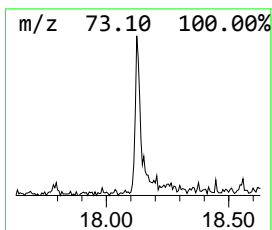
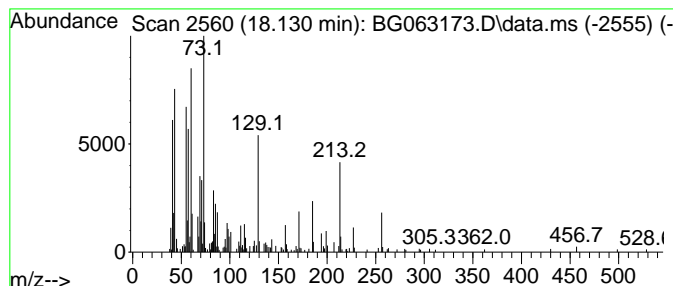
Quant Method : Z:\svoasrv\HPCHEM1\BNA_G\Methods\SFAM-EPA-BG110624.MA.M
 Quant Title : SVOA CALIBRATION

TIC Library : C:\DATABASE\NIST20.L
 TIC Integration Parameters: LSCINT.P

 Peak Number 3 Tridecanoic acid Concentration Rank 2

R.T.	EstConc	Area	Relative to ISTD	R.T.
18.130	3.37 ng/ul	273672	Phenanthrene-d10	17.225

Hit#	of	5	Tentative ID	MW	MolForm	CAS#	Qual
1			Tridecanoic acid	214	C13H26O2	000638-53-9	89
2			Undecanoic acid	186	C11H22O2	000112-37-8	78
3			Tetradecanoic acid	228	C14H28O2	000544-63-8	68
4			Tetradecanoic acid	228	C14H28O2	000544-63-8	68
5			Tetradecanoic acid	228	C14H28O2	000544-63-8	64



Data Path : Z:\svoasrv\HPCHEM1\BNA_G\Data\BG110624\
 Data File : BG063173.D
 Acq On : 6 Nov 2024 18:13
 Operator : RC/JU
 Sample : P4634-05
 Misc :
 ALS Vial : 10 Sample Multiplier: 1

Instrument :
 BNA_G
 ClientSampleId :
 C0PI9

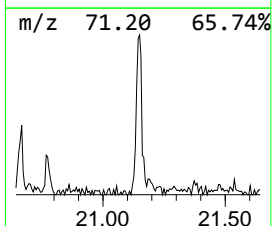
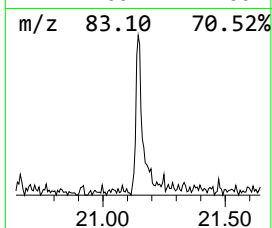
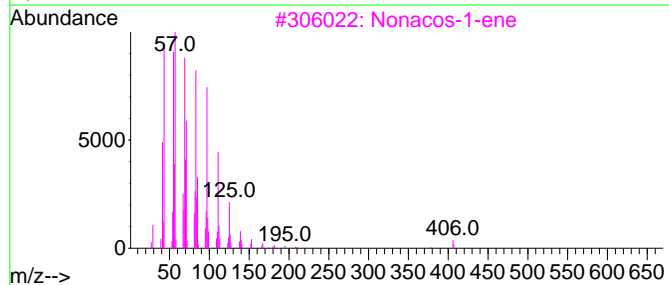
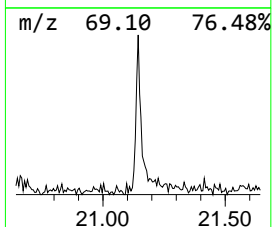
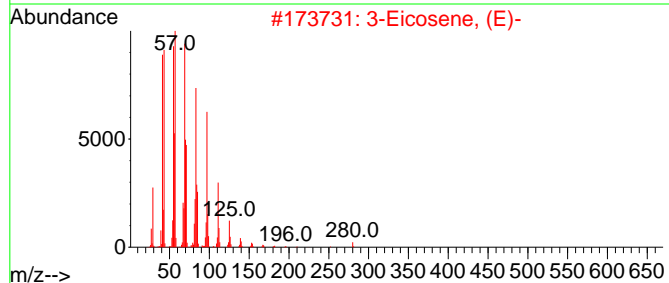
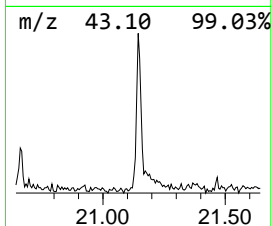
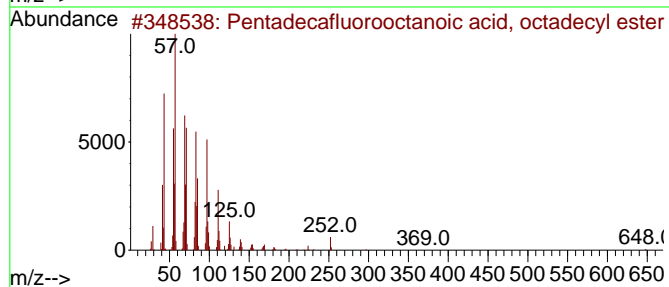
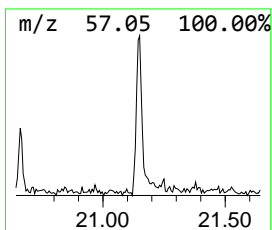
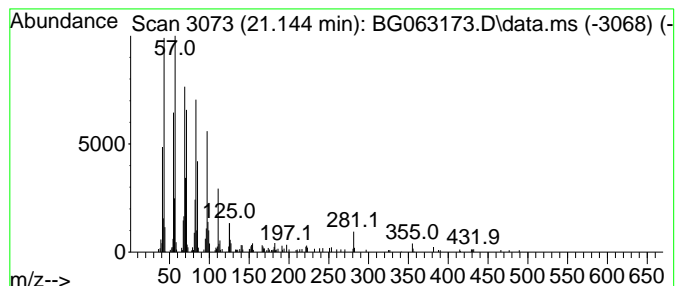
Quant Method : Z:\svoasrv\HPCHEM1\BNA_G\Methods\SFAM-EPA-BG110624.MA.M
 Quant Title : SVOA CALIBRATION

TIC Library : C:\DATABASE\NIST20.L
 TIC Integration Parameters: LSCINT.P

 Peak Number 4 Pentadecafluorooctanoic aci... Concentration Rank 3

R.T.	EstConc	Area	Relative to ISTD	R.T.
21.144	2.87 ng/ul	300831	Chrysene-d12	21.479

Hit#	of	5	Tentative ID	MW	MolForm	CAS#	Qual
1			Pentadecafluorooctanoic acid, oc...	666	C26H37F15O2	1000406-04-8	90
2			3-Eicosene, (E)-	280	C20H40	074685-33-9	86
3			Nonacos-1-ene	406	C29H58	018835-35-3	64
4			9-Eicosene, (E)-	280	C20H40	074685-29-3	62
5			1-Eicosene	280	C20H40	003452-07-1	60



Data Path : Z:\svoasrv\HPCHEM1\BNA_G\Data\BG110624\
Data File : BG063173.D
Acq On : 6 Nov 2024 18:13
Operator : RC/JU
Sample : P4634-05
Misc :
ALS Vial : 10 Sample Multiplier: 1

Instrument :
BNA_G
ClientSampleId :
C0PI9

Quant Method : Z:\svoasrv\HPCHEM1\BNA_G\Methods\SFAM-EPA-BG110624.MA.M
Quant Title : SVOA CALIBRATION

TIC Library : C:\DATABASE\NIST20.L
TIC Integration Parameters: LSCINT.P

TIC Top Hit name	RT	EstConc	Units	Response	--Internal Standard--			
					#	RT	Resp	Conc
Benzophenone	15.832	6.8	ng/u1	364050	3	14.475	1070100	20.0
Tridecanoic acid	18.130	3.4	ng/u1	273672	4	17.225	1622780	20.0
Pentadecafluoro...	21.144	2.9	ng/u1	300831	5	21.479	2097950	20.0